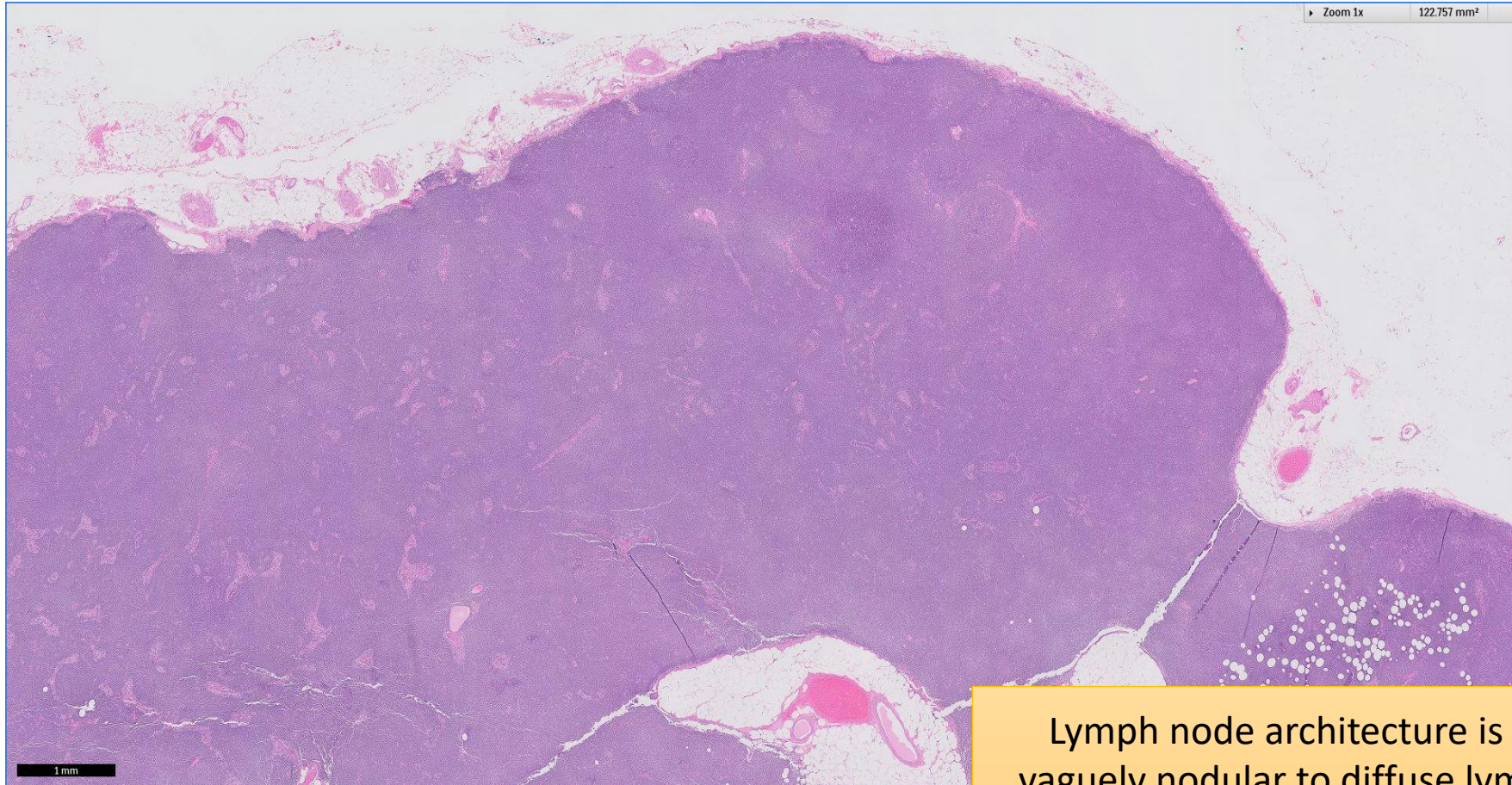


SGH CASE 37: 17RE161

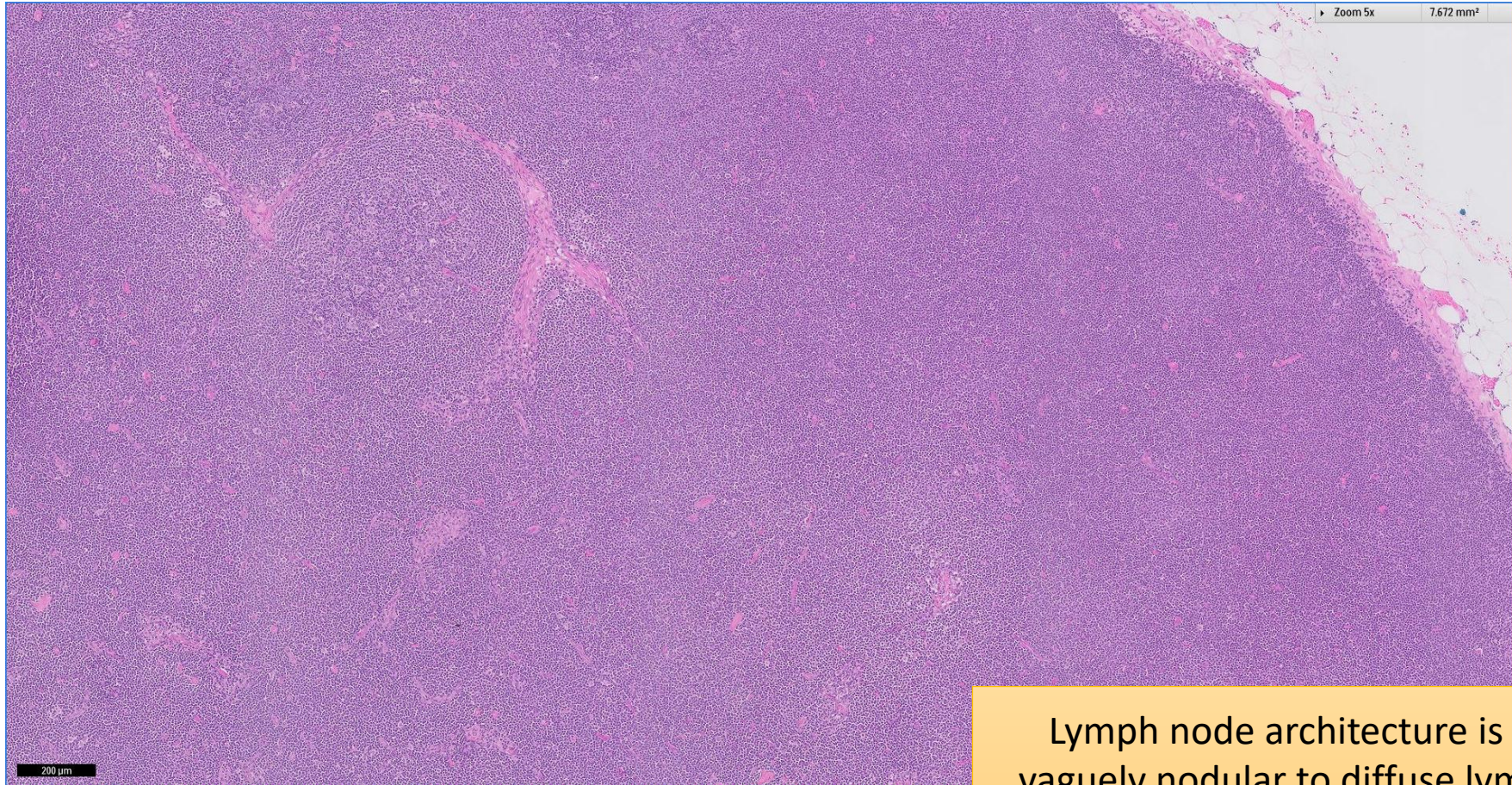
- Clinical History:
 - 60+ years old, Male. Radical prostatectomy for prostate adenocarcinoma. Pelvic lymph node dissection performed.
- Specimen:
 - Left and right pelvic lymph nodes specimen.

SGH CASE 37: 17RE161 H&E



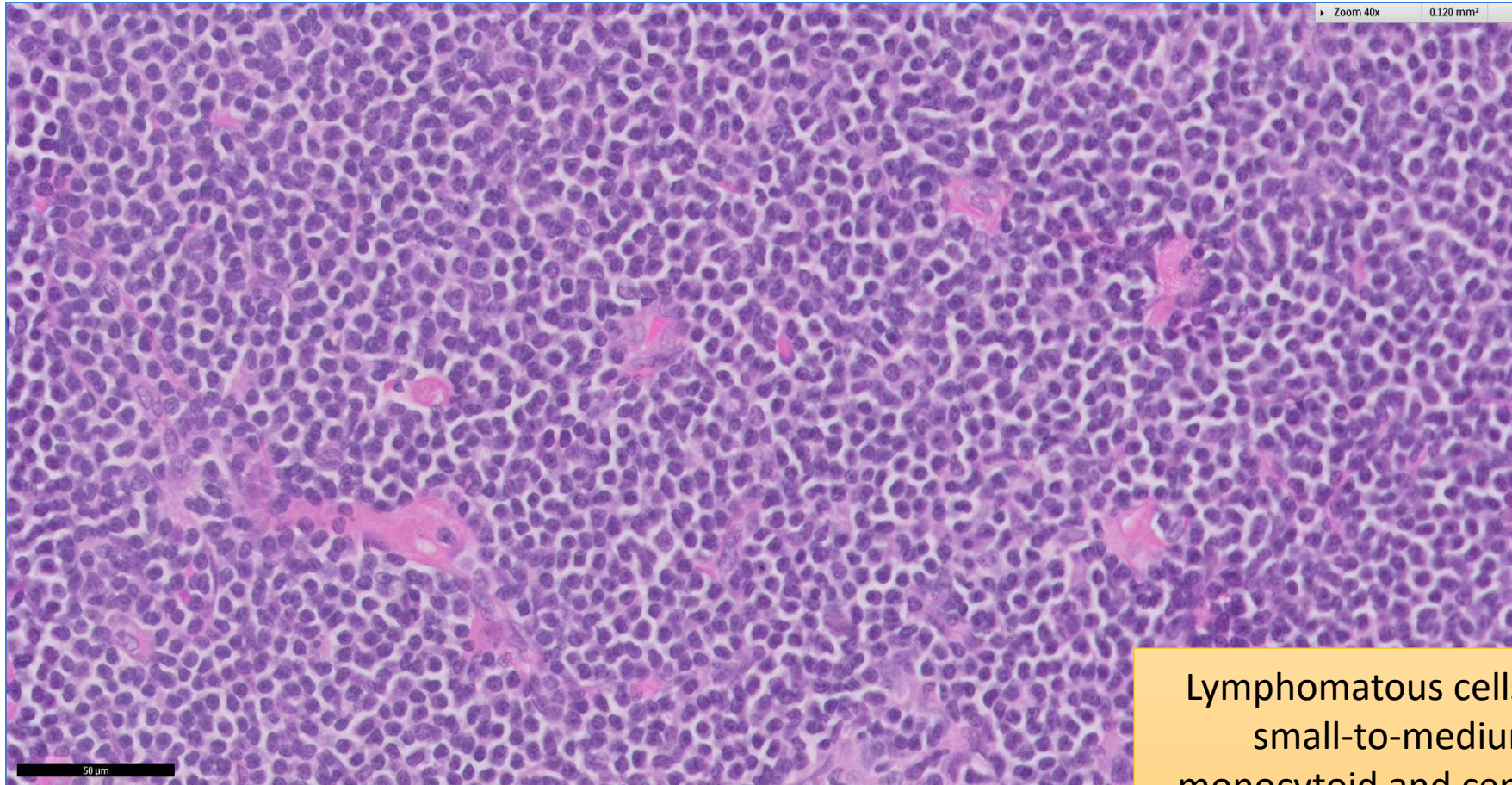
Lymph node architecture is effaced by vaguely nodular to diffuse lymphomatous infiltrate

SGH CASE 37: 17RE161 H&E



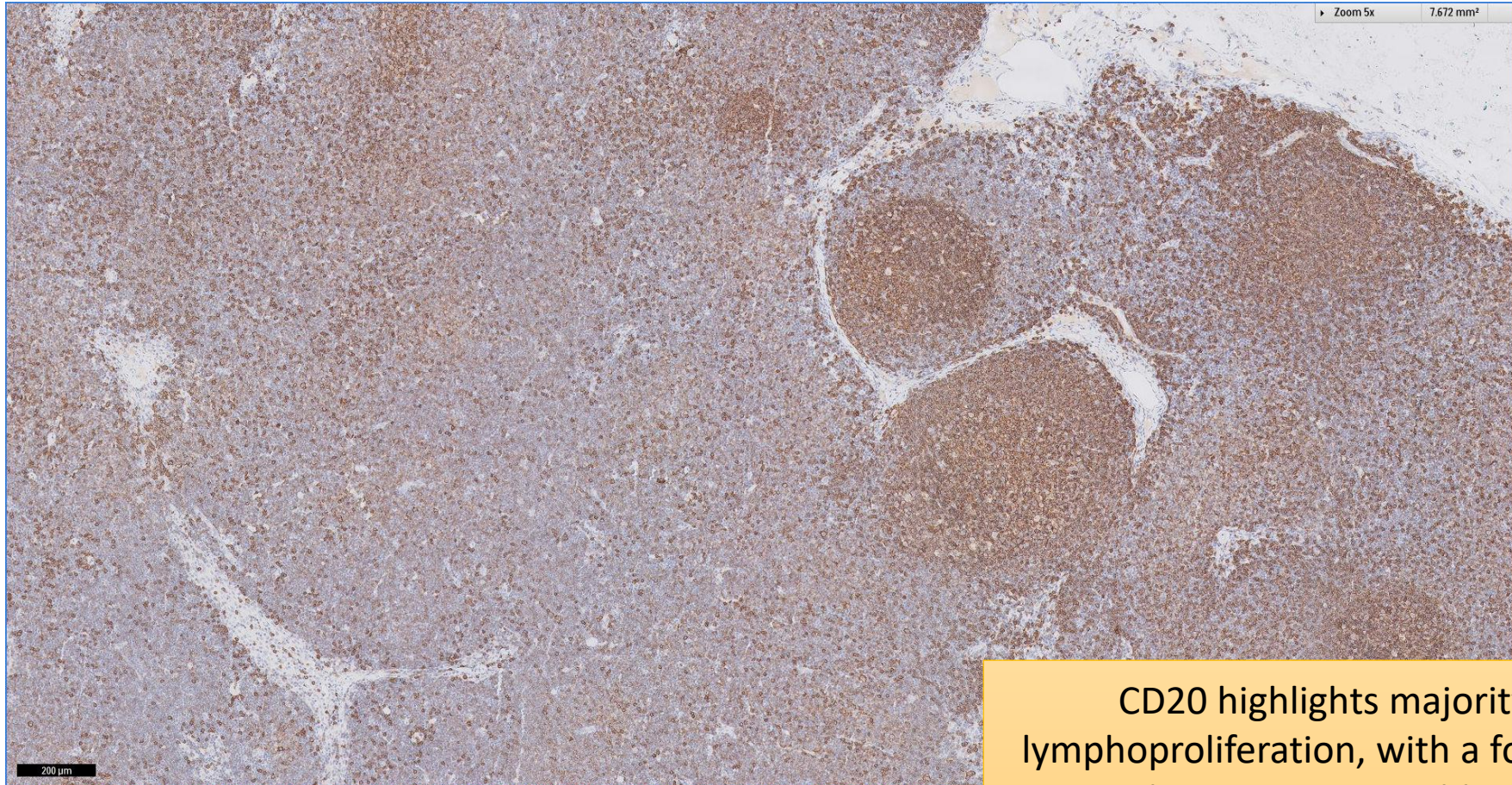
Lymph node architecture is effaced by vaguely nodular to diffuse lymphomatous infiltrate

SGH CASE 37: 17RE161 H&E



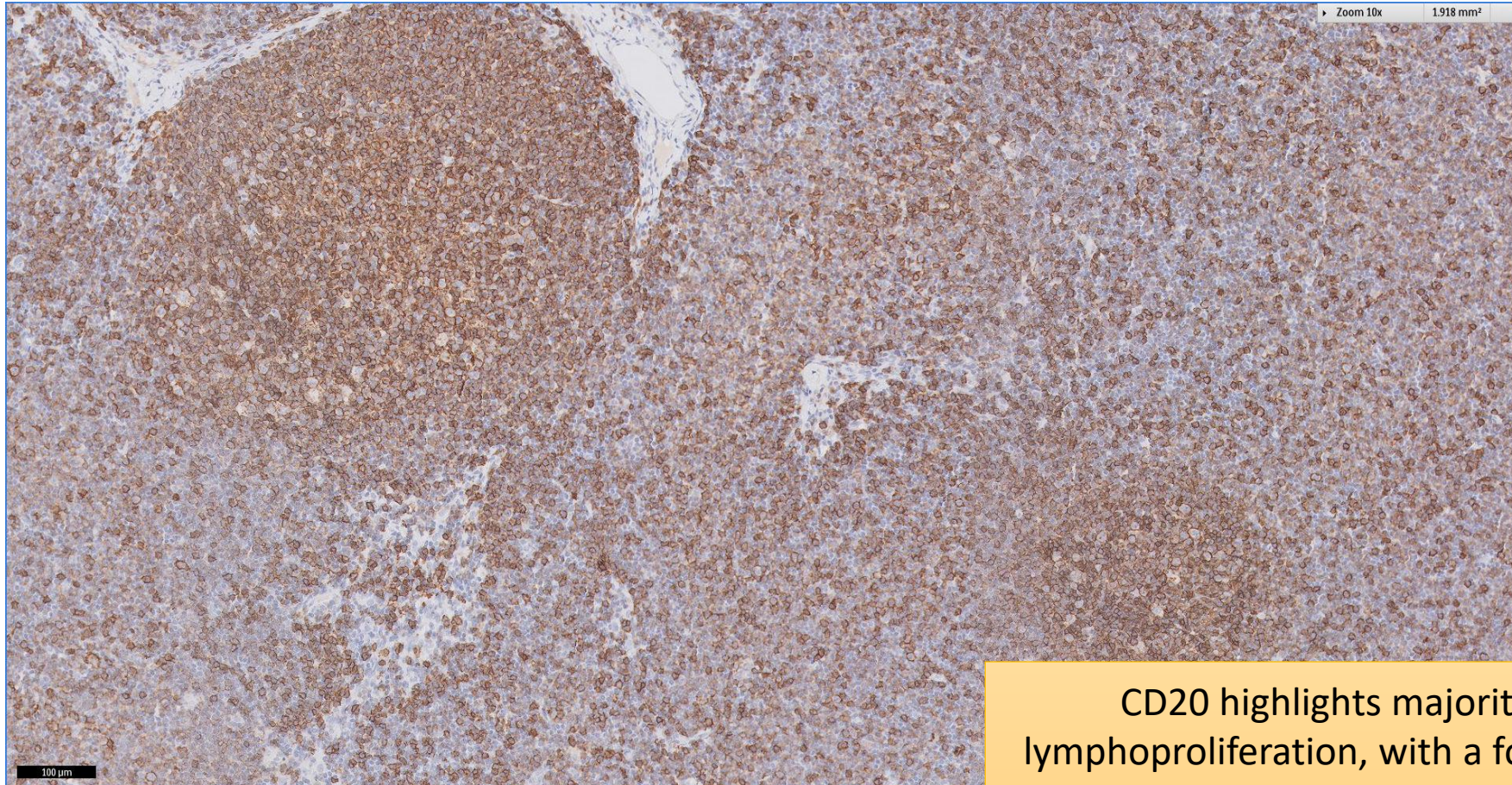
Lymphomatous cells are mostly small-to-medium sized, monocytyd and centrocyte-like, with some appearing plasmacytoid

SGH CASE 37: 17RE161 CD20



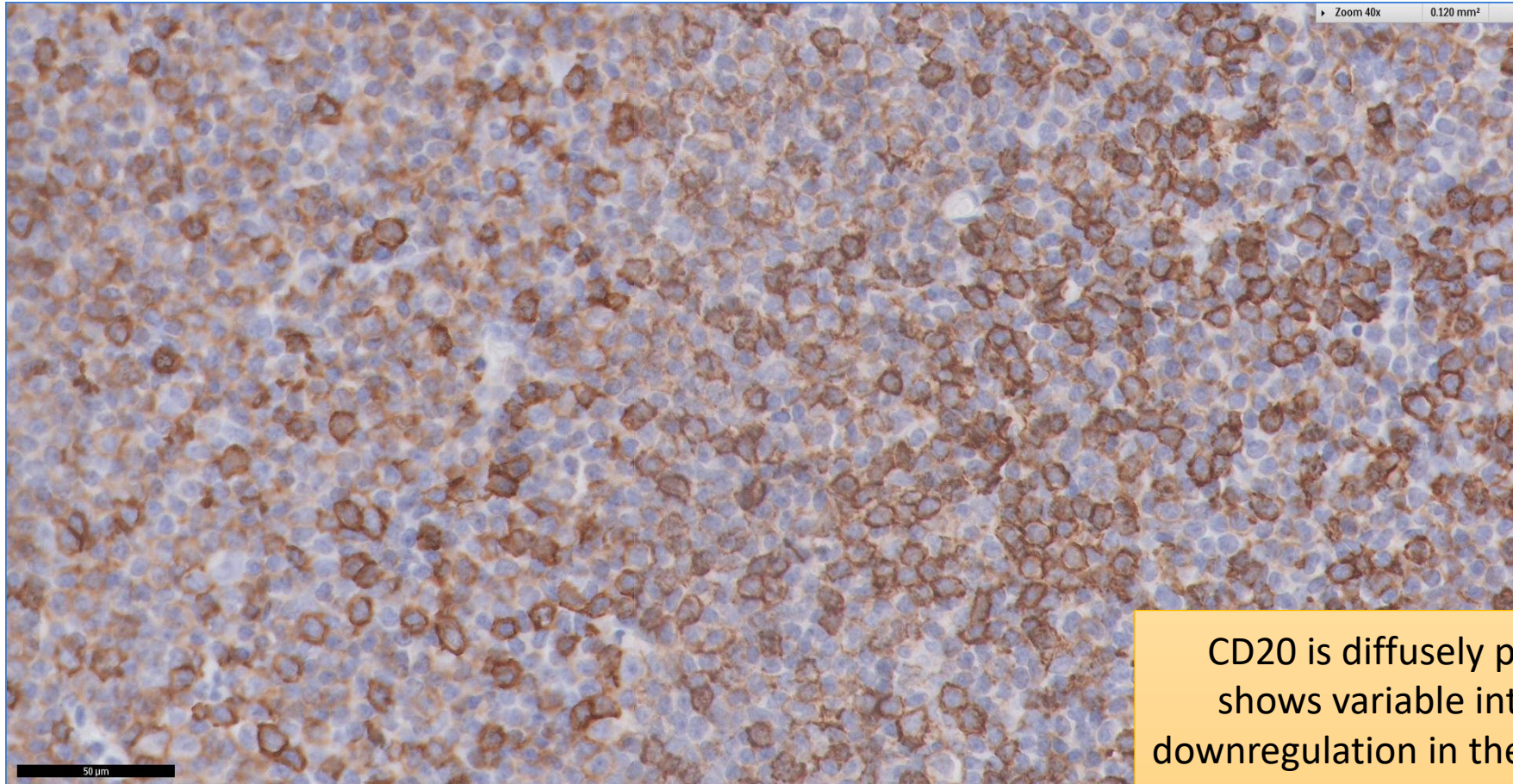
CD20 highlights majority of the lymphoproliferation, with a folliculocentric pattern, but appears variably downregulated in the interfollicular zones

SGH CASE 37: 17RE161 CD20



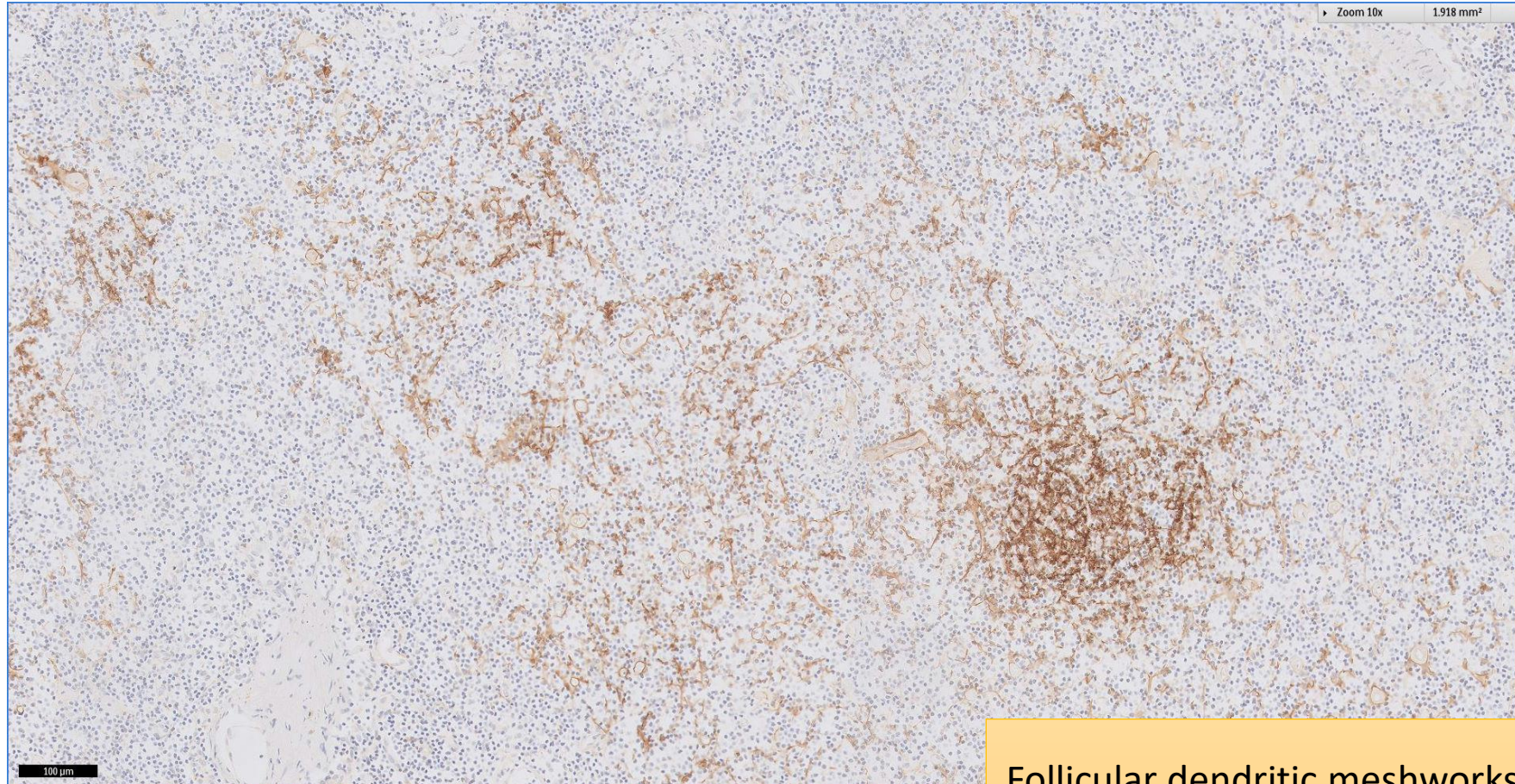
CD20 highlights majority of the lymphoproliferation, with a folliculocentric pattern, but appears variably downregulated in the interfollicular zones

SGH CASE 37: 17RE161 CD20



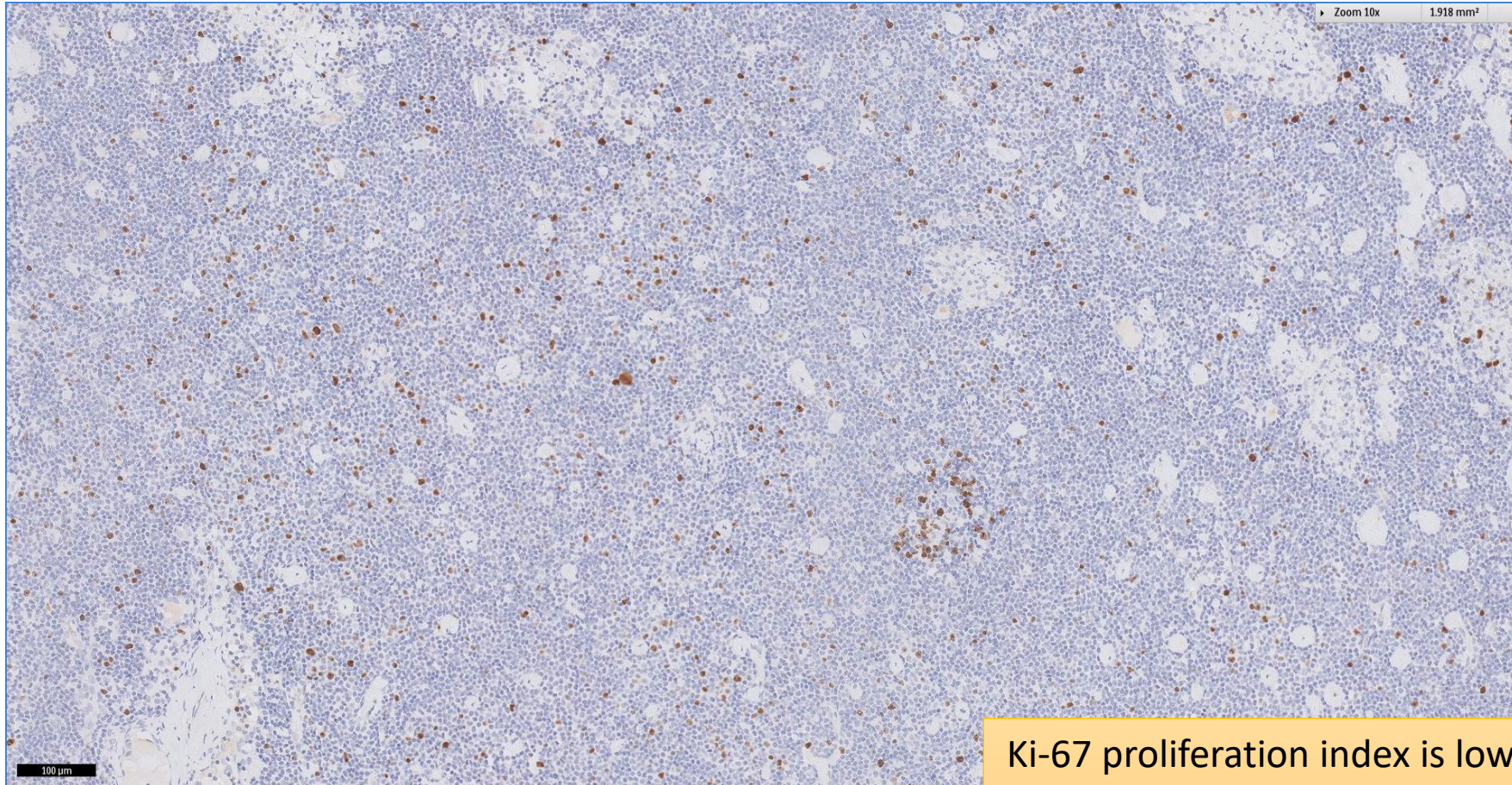
CD20 is diffusely positive, but shows variable intensity and downregulation in the interfollicular zones, likely related to attempted plasmacytic differentiation

SGH CASE 37: 17RE161 CD21



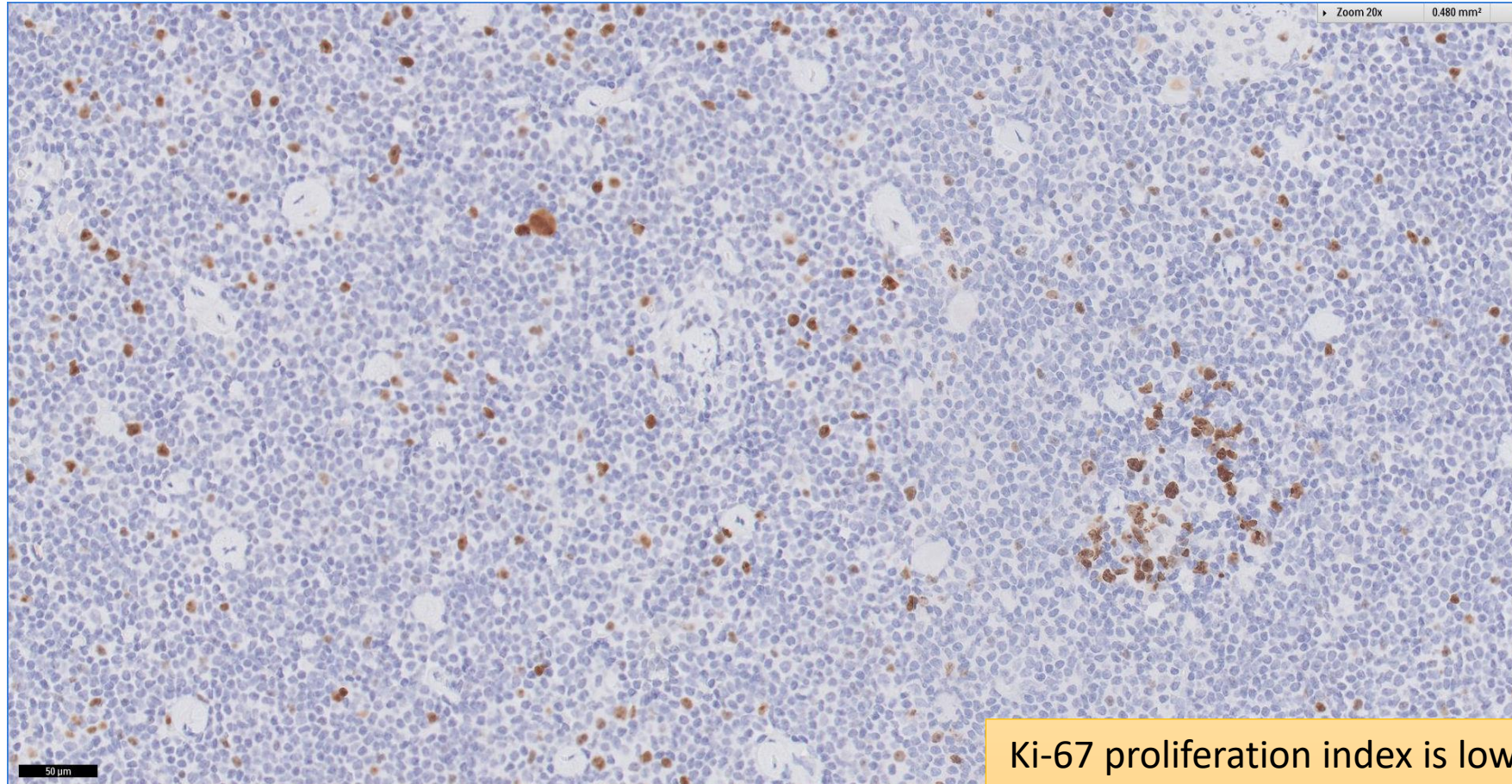
Follicular dendritic meshworks are expanded but attenuated

SGH CASE 37: 17RE161 KI67



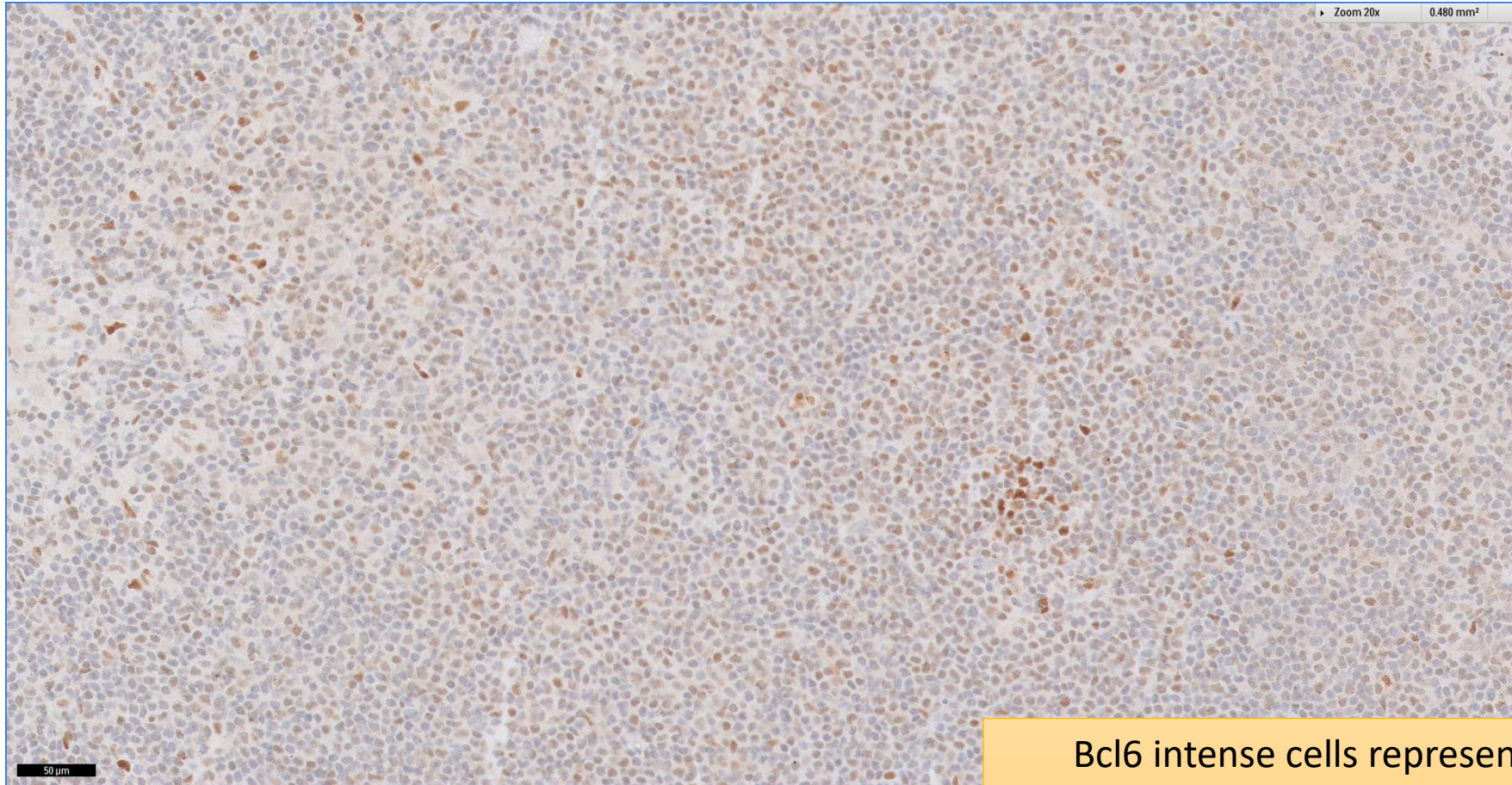
Ki-67 proliferation index is low, and highlight remnant germinal centre cells of colonised follicles

SGH CASE 37: 17RE161 KI67



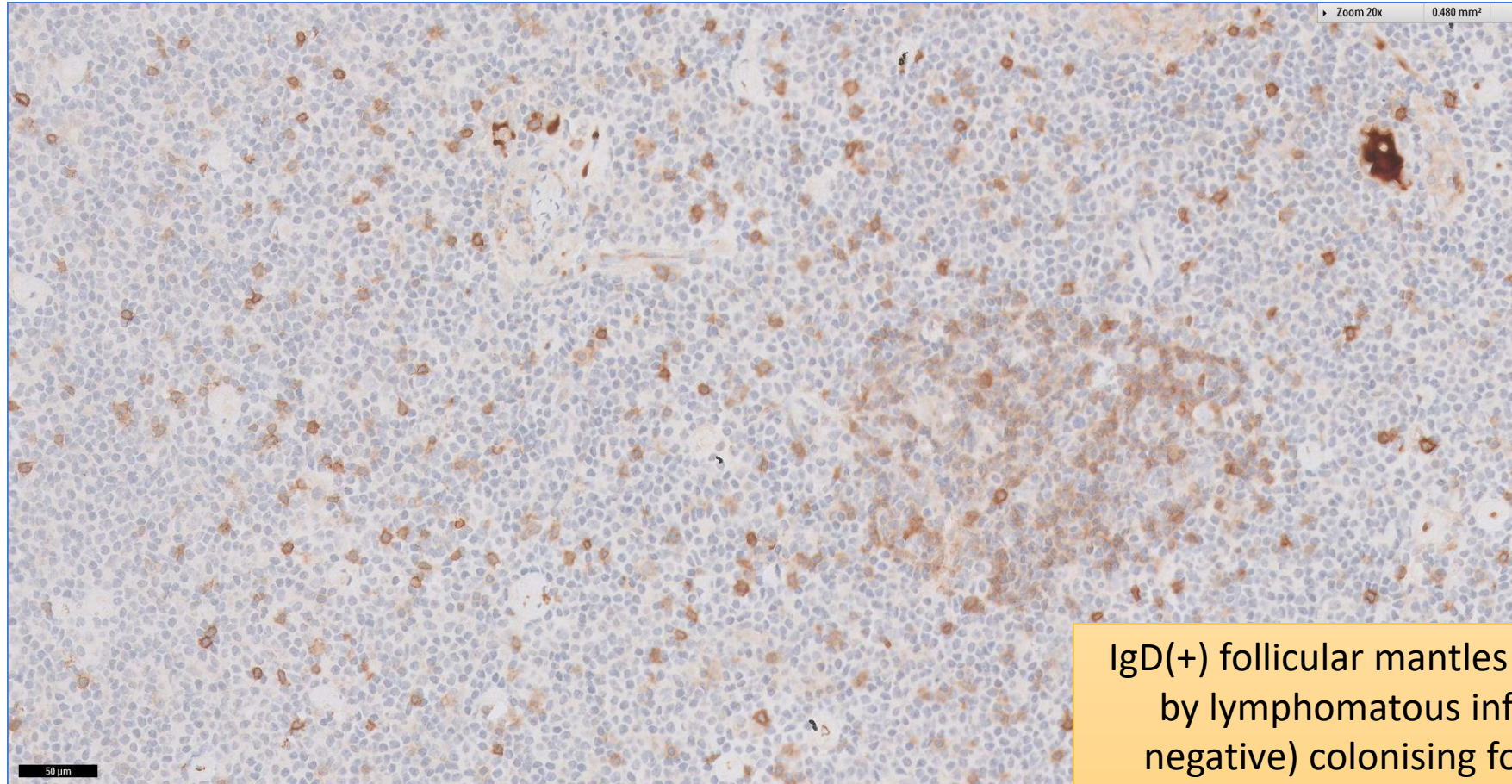
Ki-67 proliferation index is low, and highlight remnant germinal centre cells of colonised follicles (lower right)

SGH CASE 37: 17RE161 BCL6



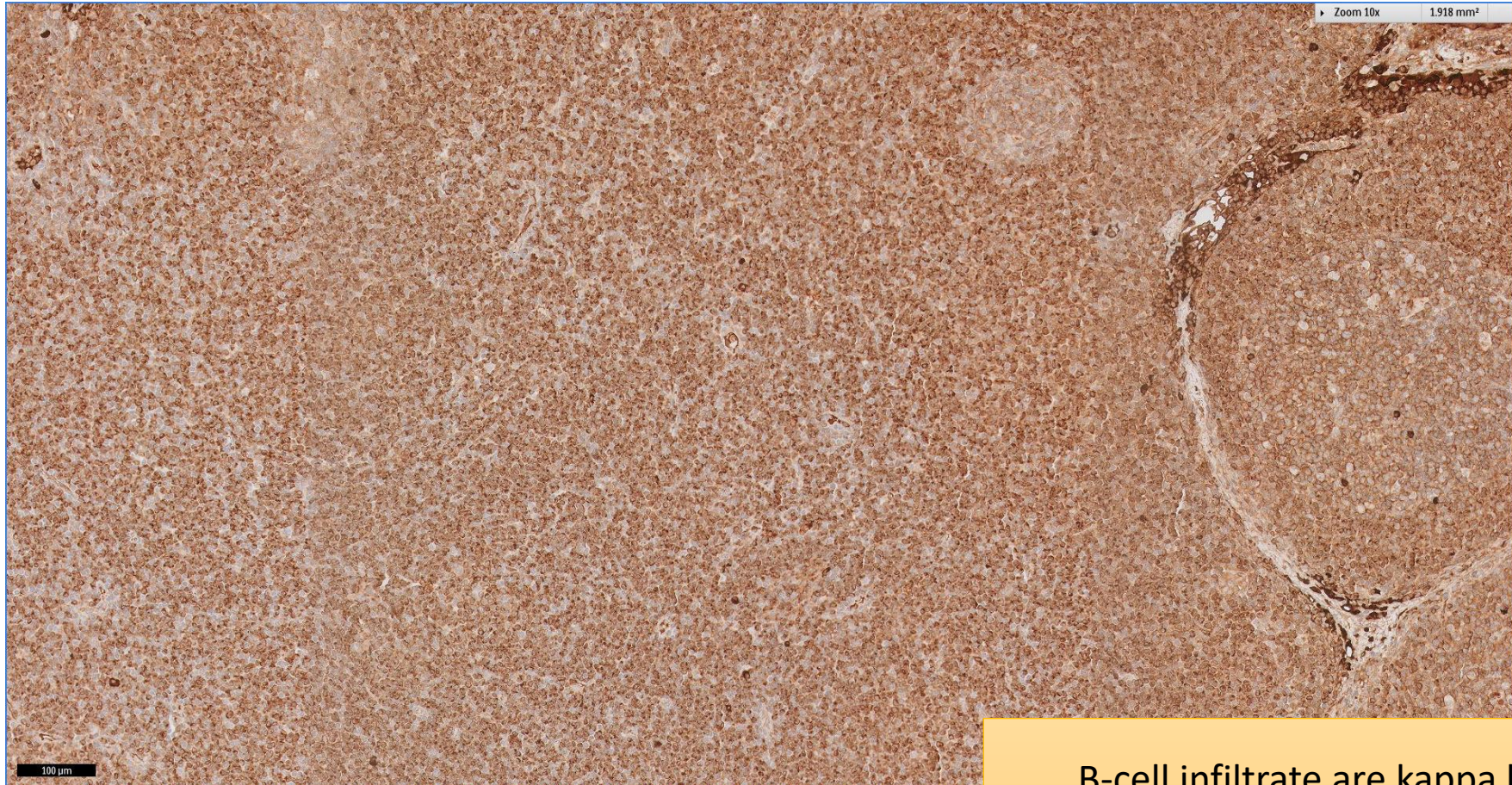
**Bcl6 intense cells represent remnant
germinal centre cells of colonised follicles
(lower right)**

SGH CASE 37: 17RE161 IgD



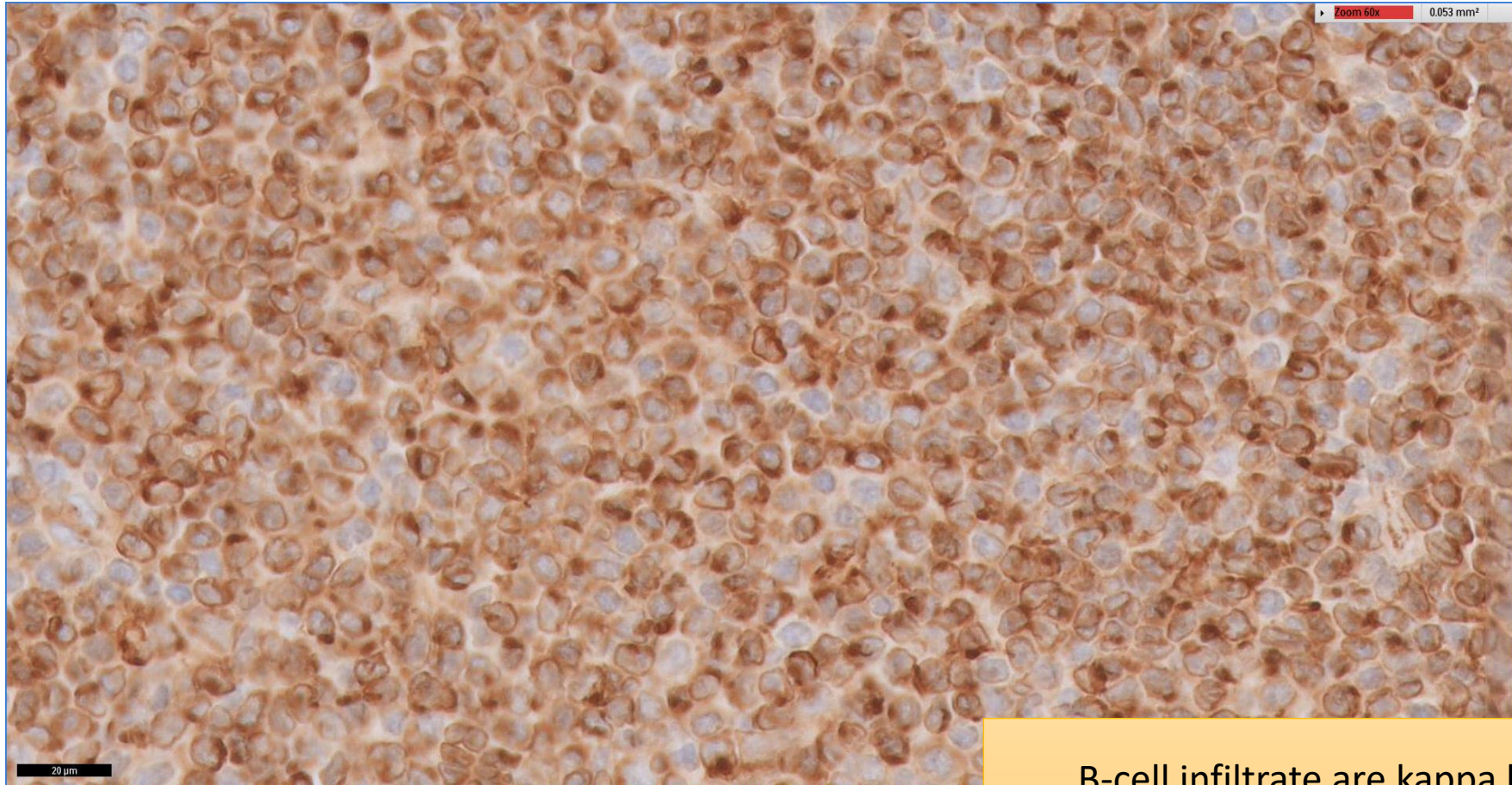
IgD(+) follicular mantles are disrupted by lymphomatous infiltrate (IgD negative) colonising follicles, with remnant mantle zone lymphocytes being widely scattered

SGH CASE 37: 17RE161 KAPPA-IHC



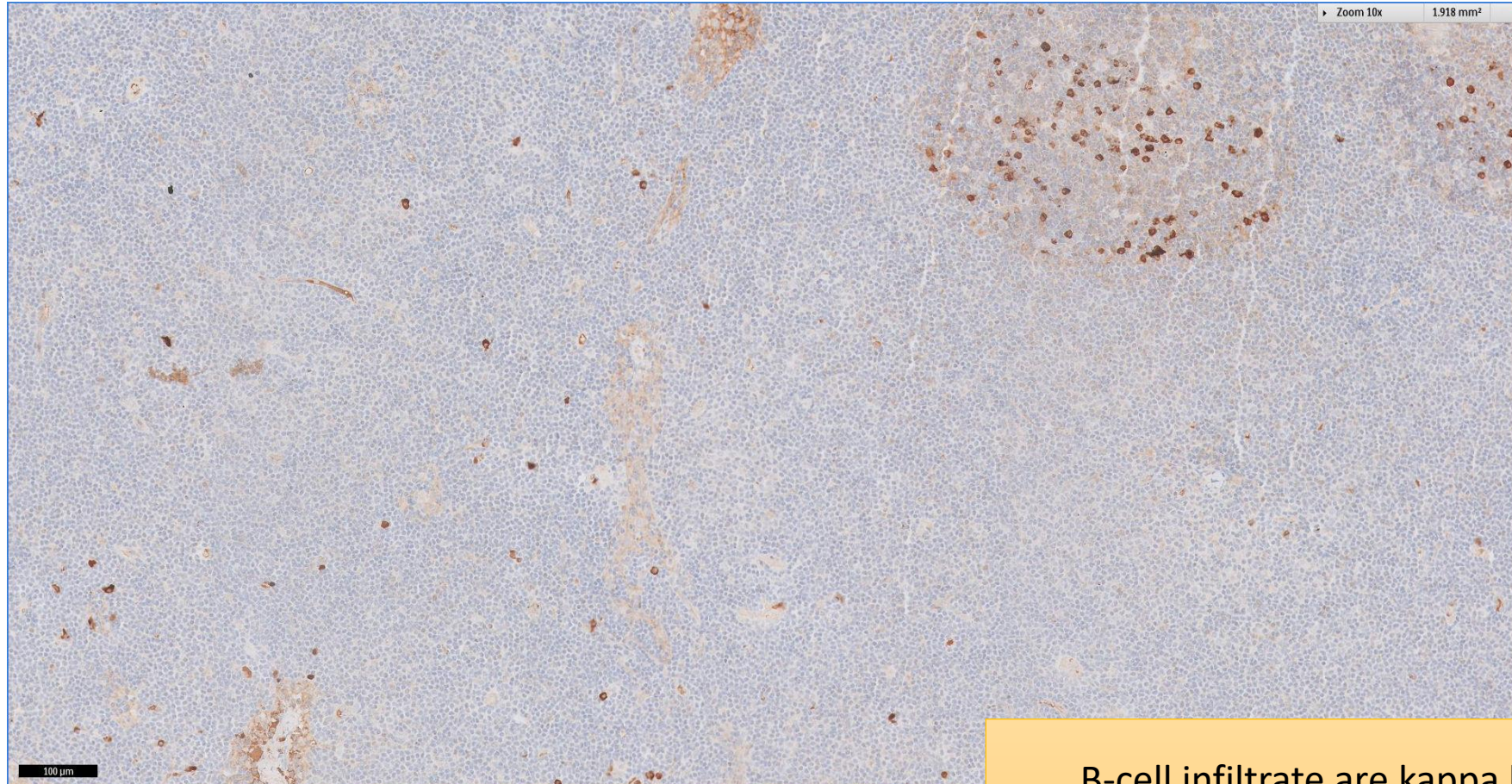
B-cell infiltrate are kappa light chain
restricted on immunohistochemistry

SGH CASE 37: 17RE161 KAPPA-IHC



B-cell infiltrate are kappa light chain
restricted on immunohistochemistry

SGH CASE 37: 17RE161 LAMBDA-IHC



B-cell infiltrate are kappa light chain
restricted on immunohistochemistry

SGH CASE 37: 17RE161

- Diagnosis
 - Nodal Marginal Zone Lymphoma
- Lymphomatous cells are negative for IgD, CD10, CD5 and cyclin D1.