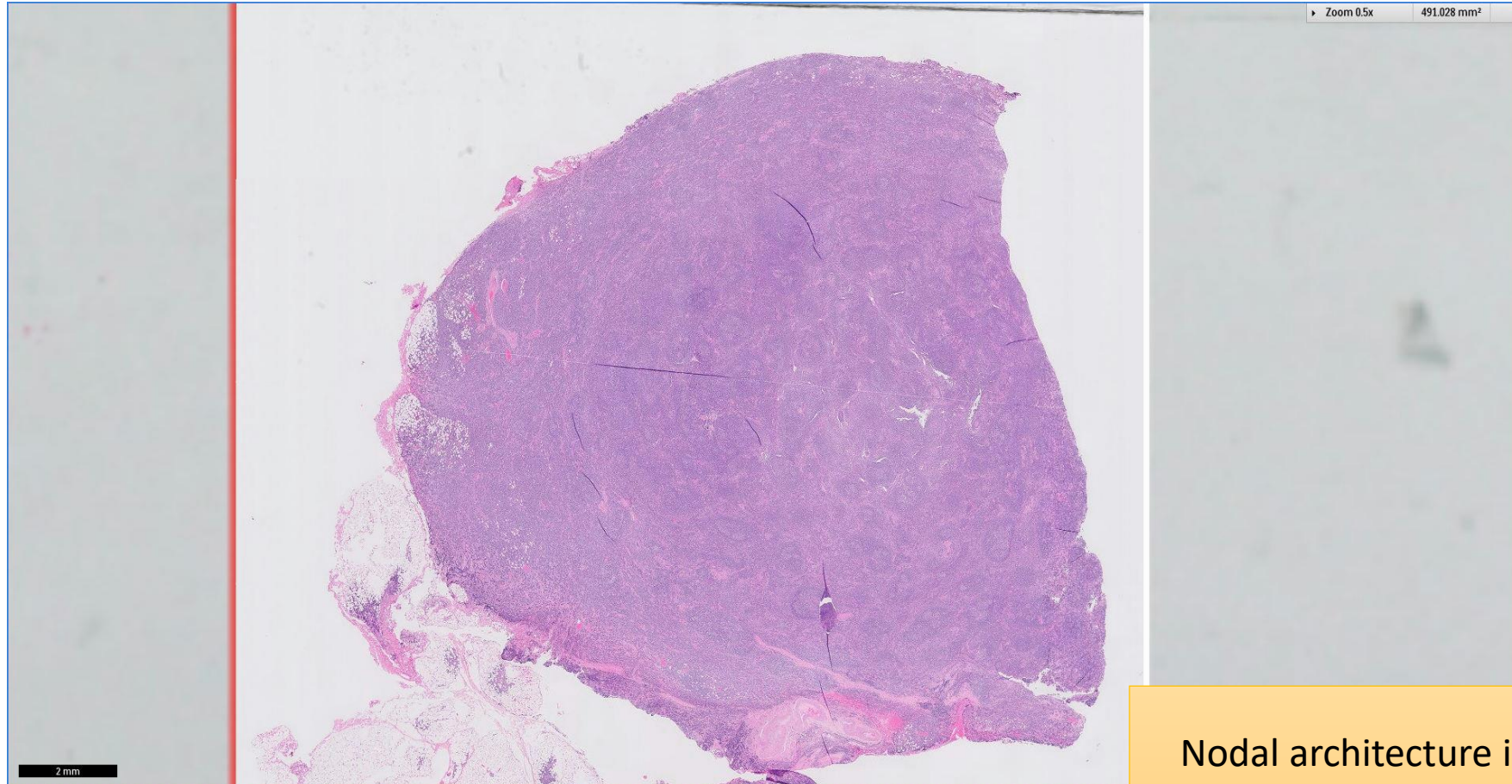


SGH CASE 36: 17RE160

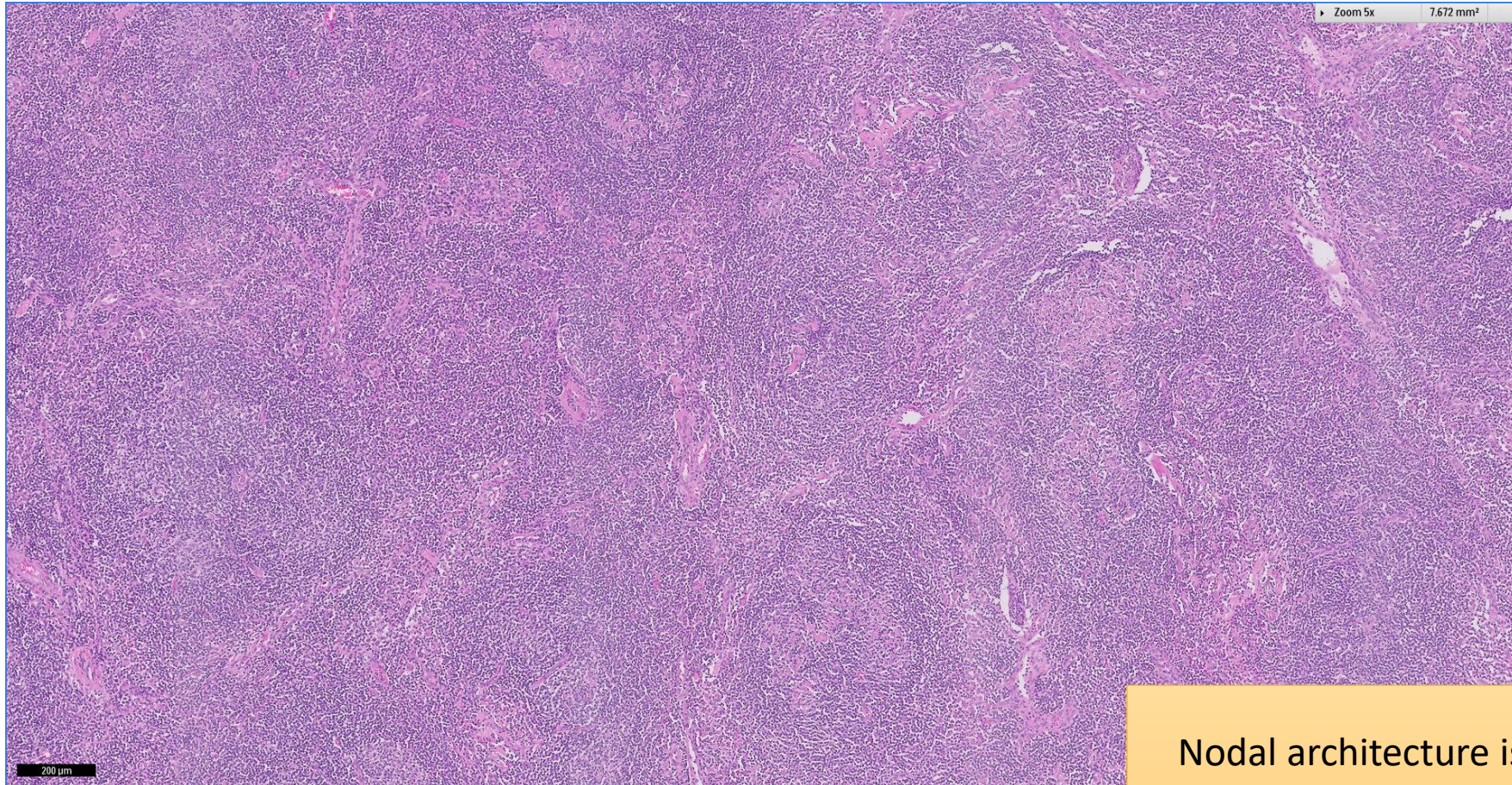
- Clinical History:
 - 40+ years old (late 40s), Male. Cervical lymphadenopathy.
- Specimen:
 - Right cervical lymph node excision biopsy

SGH CASE 36: 17RE160 H&E



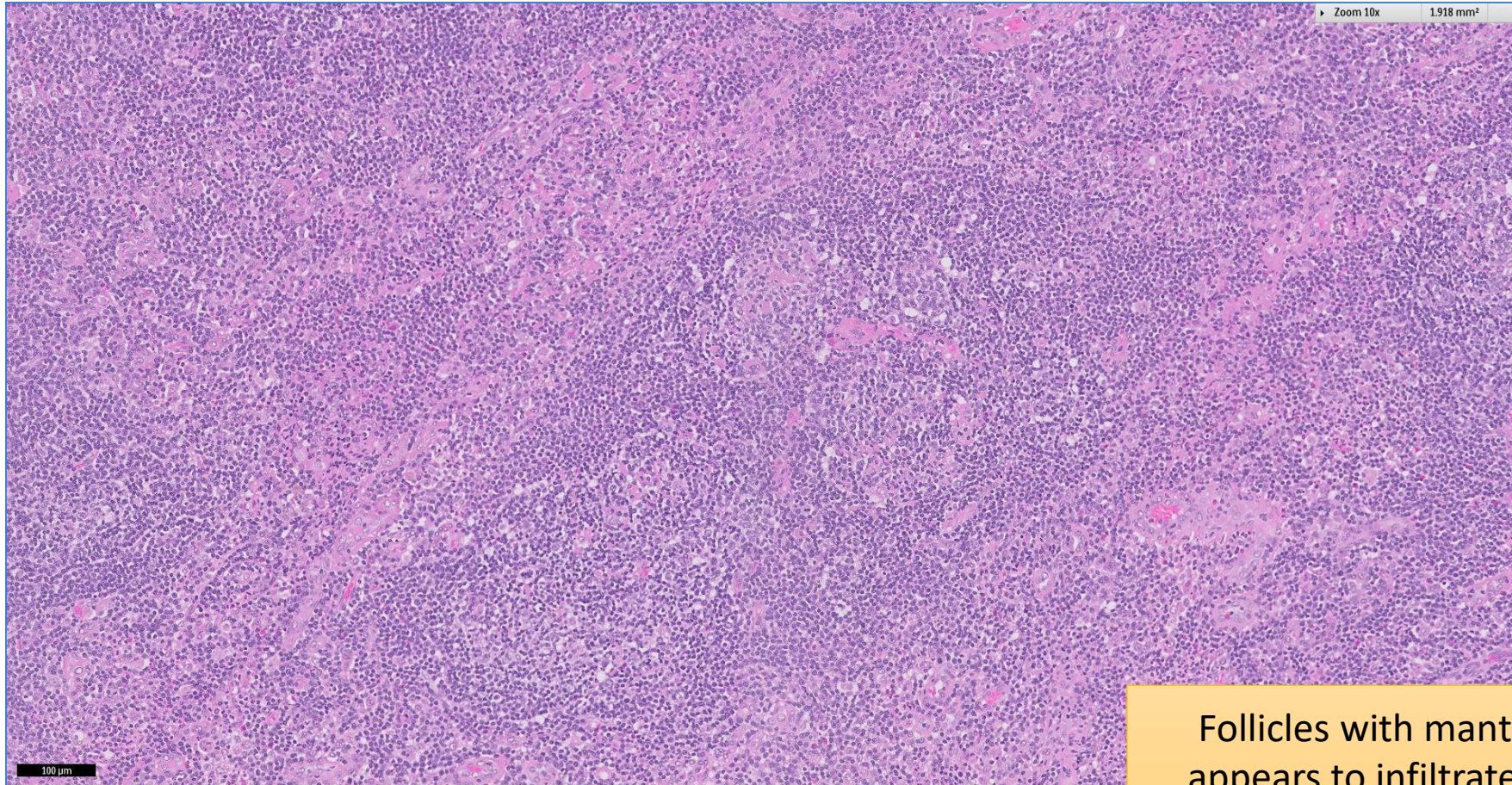
Nodal architecture is replaced by nodular lymphoproliferation

SGH CASE 36: 17RE160 H&E



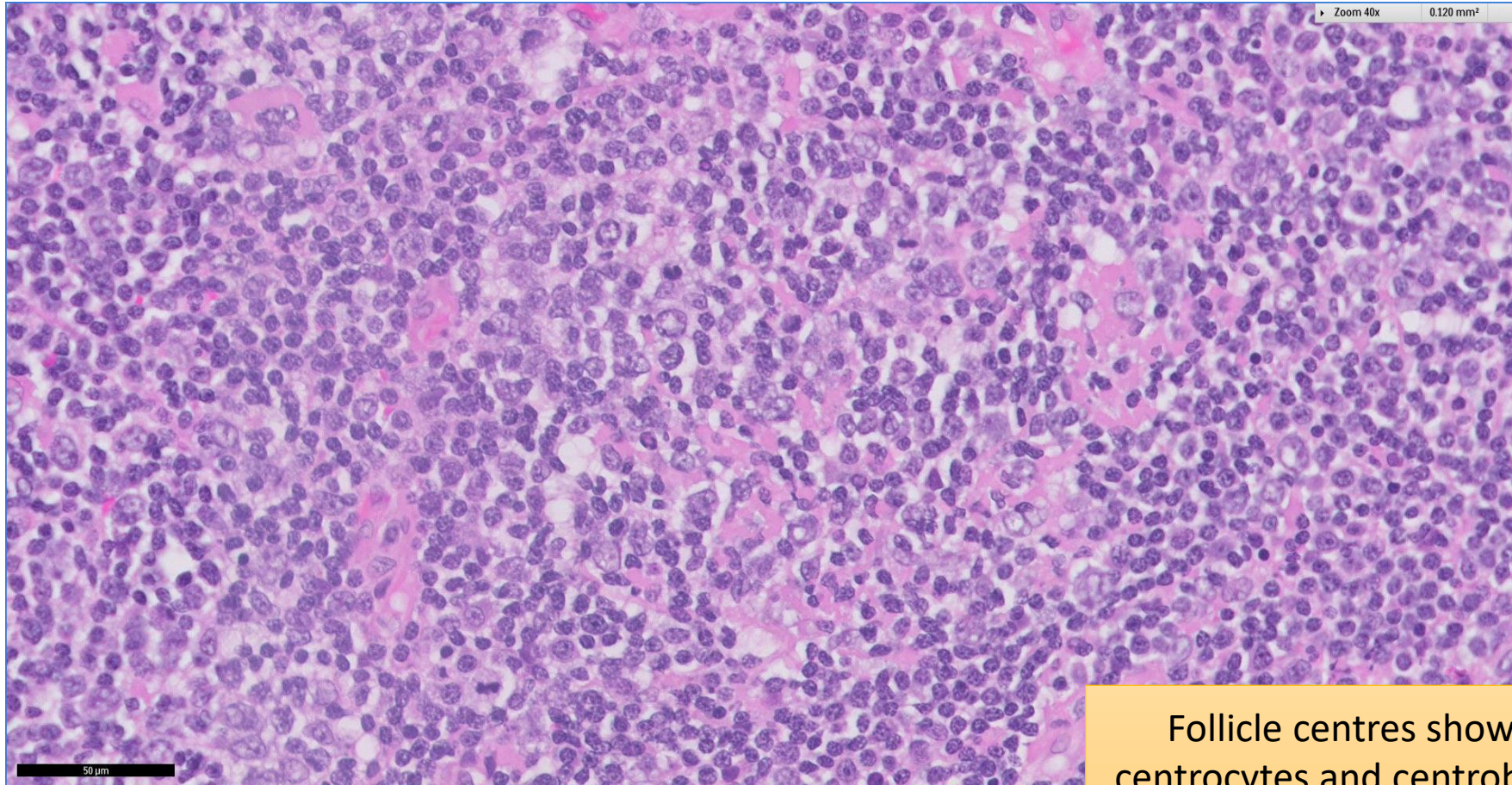
Nodal architecture is replaced by nodular lymphoproliferation

SGH CASE 36: 17RE160 H&E



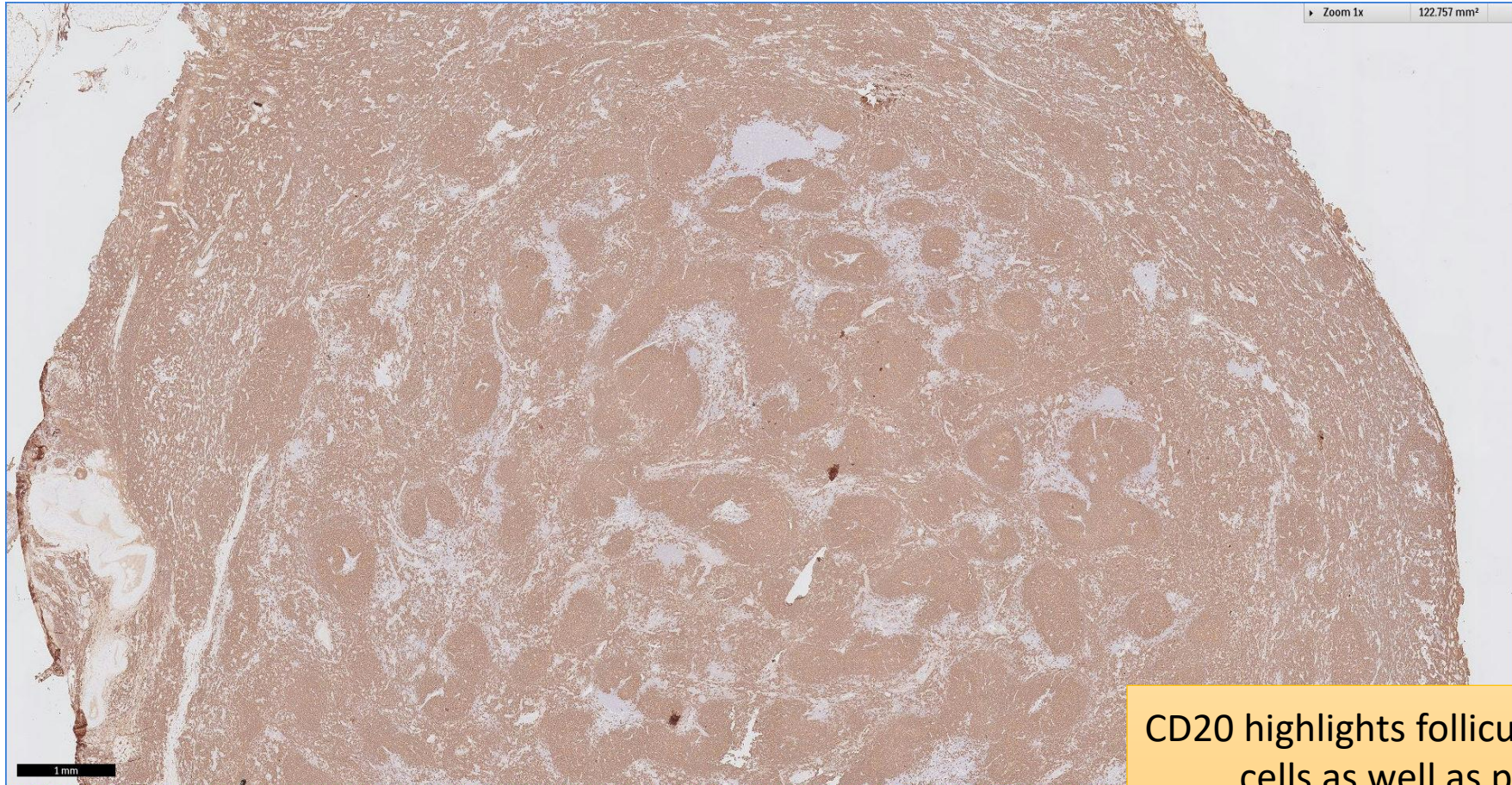
Follicles with mantle zone that appears to infiltrate and disrupt follicle centres

SGH CASE 36: 17RE160 H&E



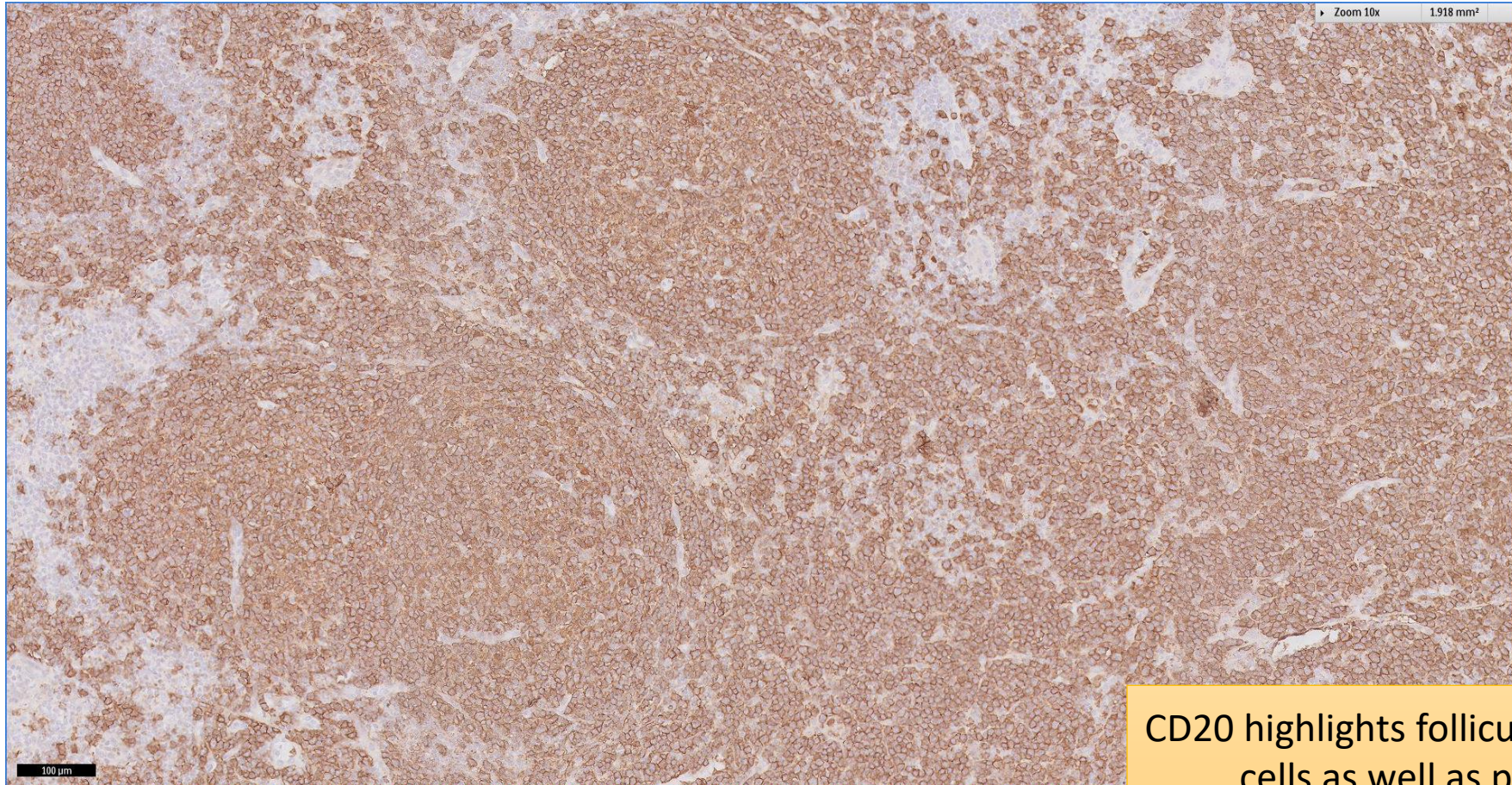
Follicle centres show mixture of centrocytes and centroblasts, but also disrupted by small mantle zone cells

SGH CASE 36: 17RE160 CD20



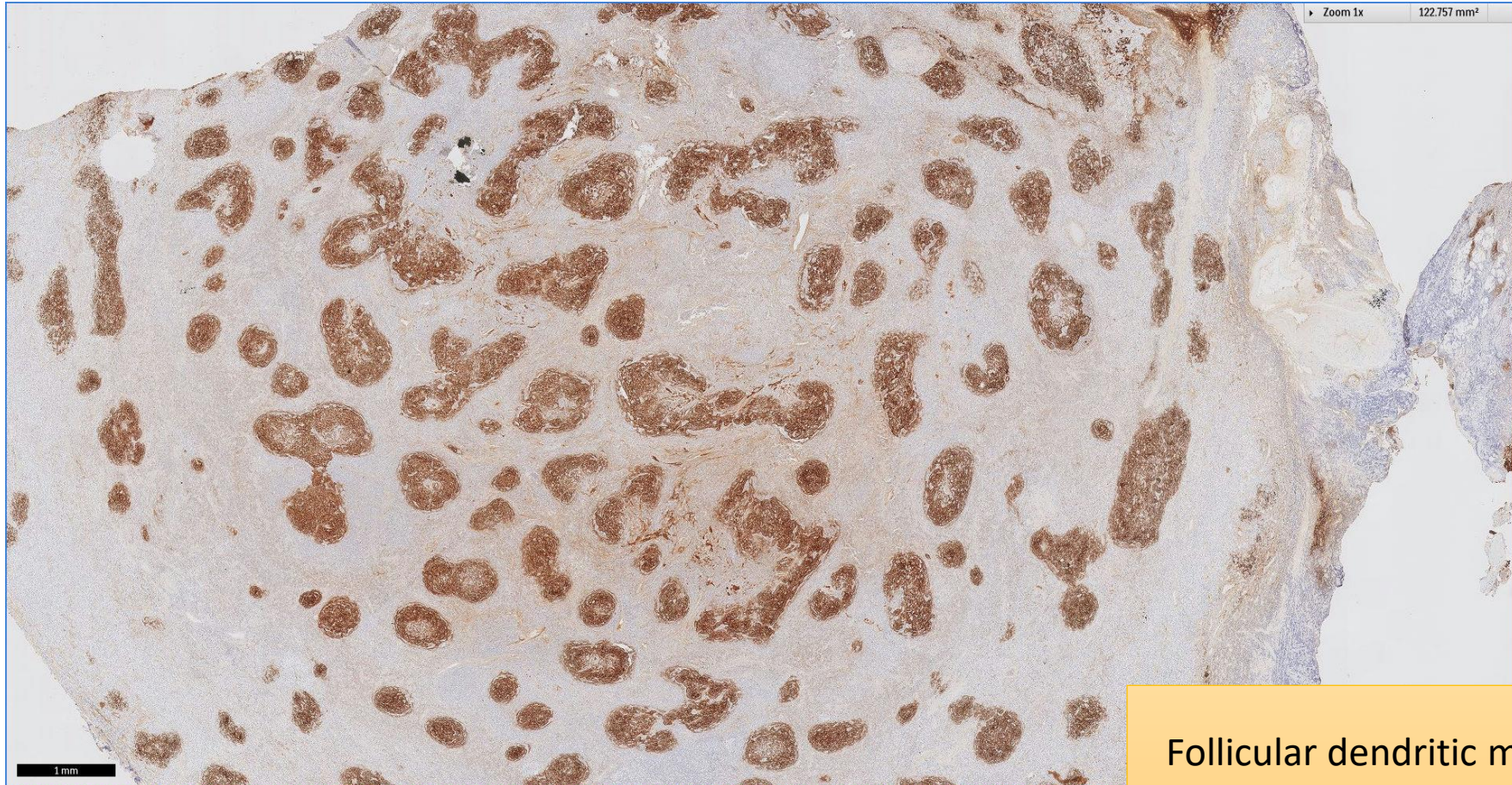
CD20 highlights follicular B-lymphoid cells as well as prominent interfollicular B-lymphoid population

SGH CASE 36: 17RE160 CD20



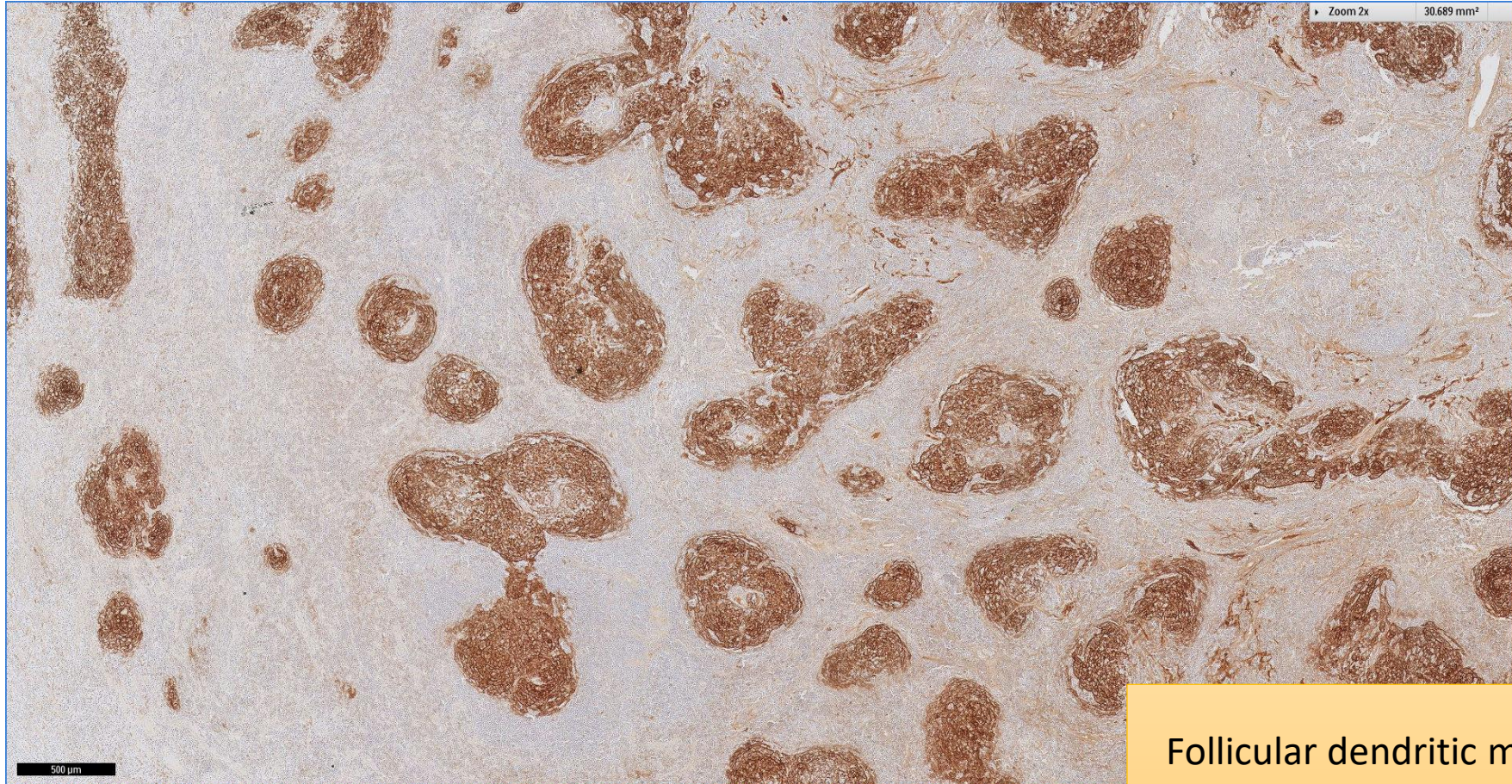
CD20 highlights follicular B-lymphoid cells as well as prominent interfollicular B-lymphoid population

SGH CASE 36: 17RE160 CD21



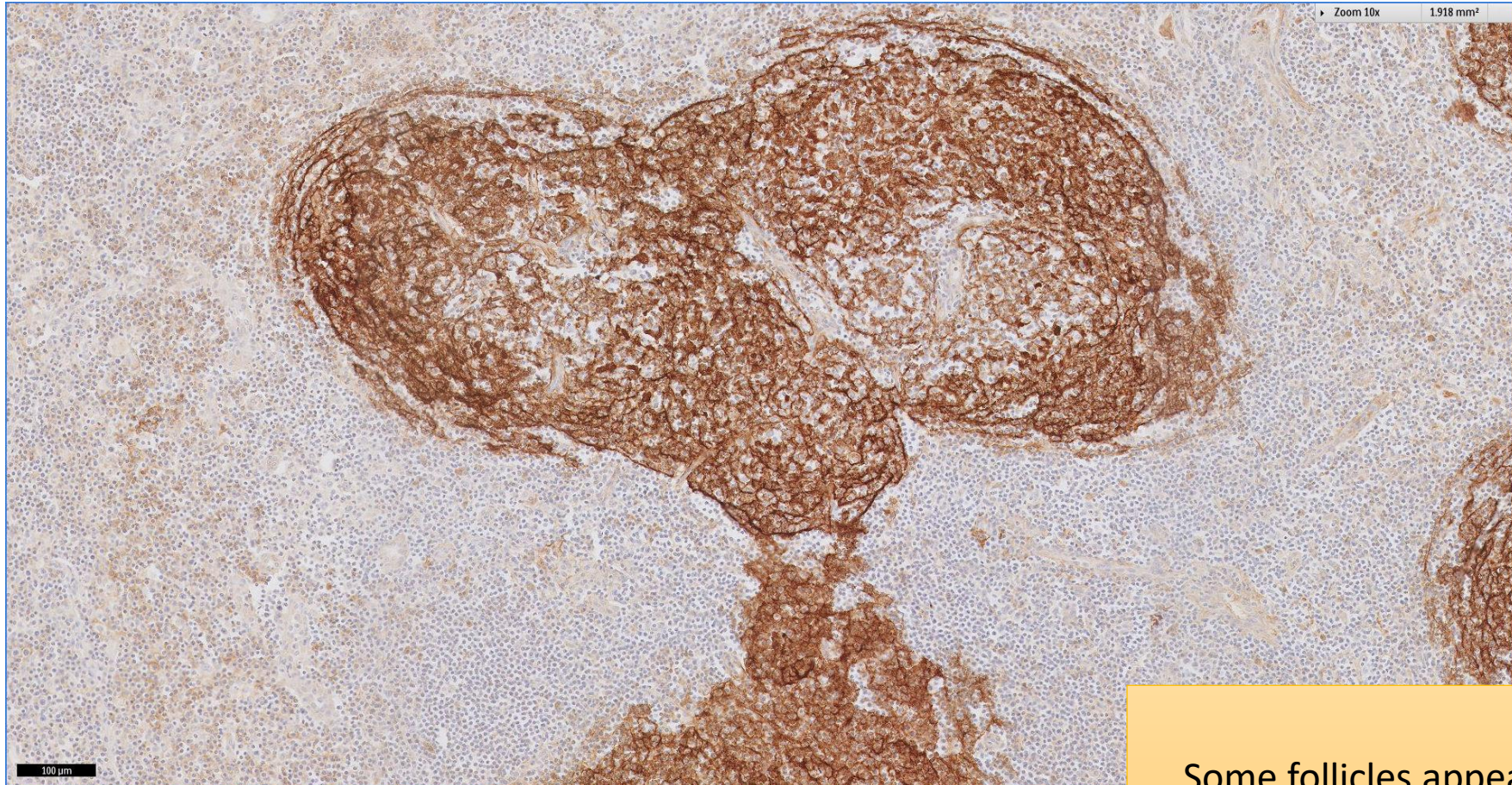
Follicular dendritic meshworks are mostly well circumscribed

SGH CASE 36: 17RE160 CD21



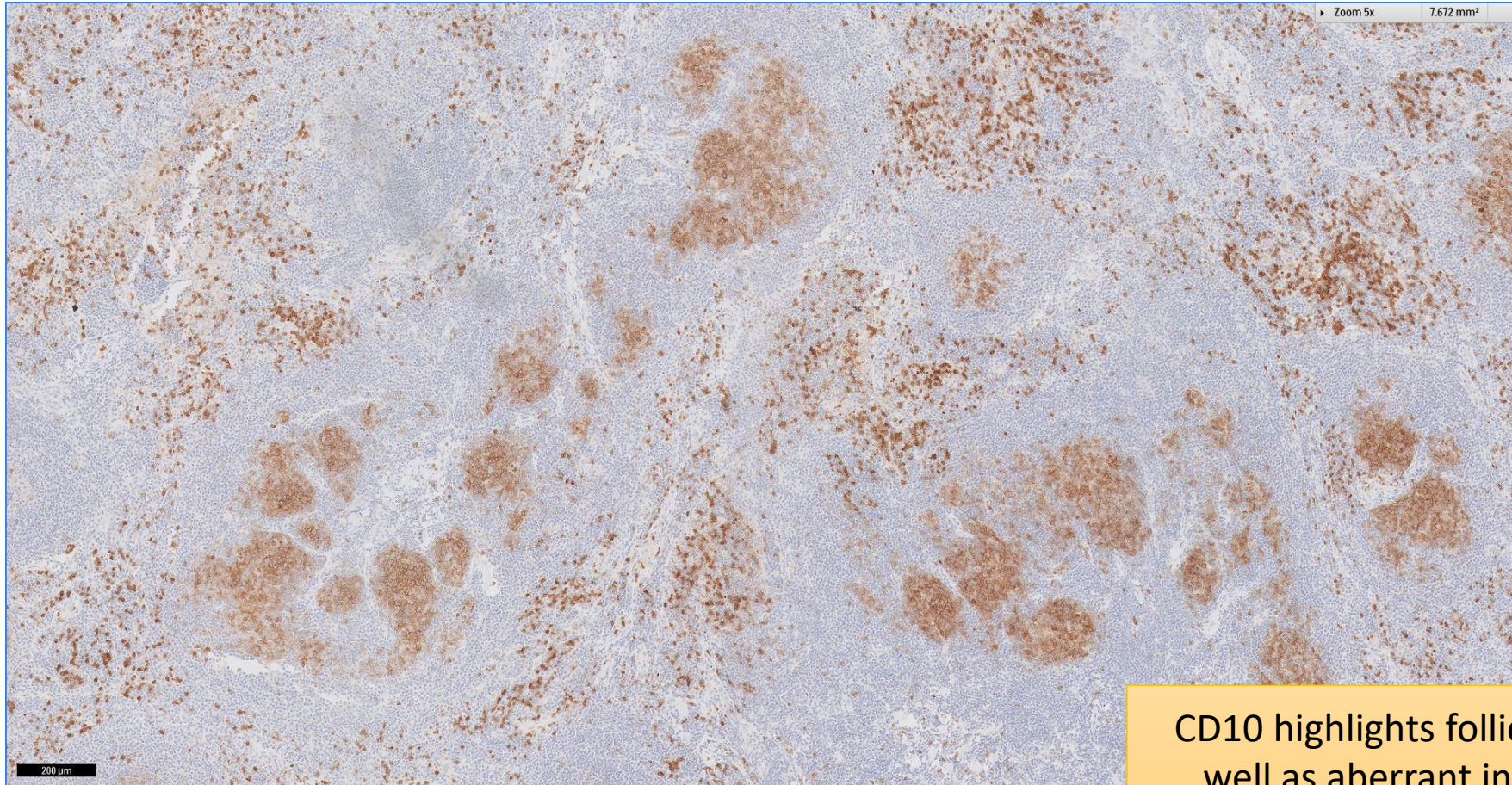
Follicular dendritic meshworks are mostly well circumscribed

SGH CASE 36: 17RE160 CD21



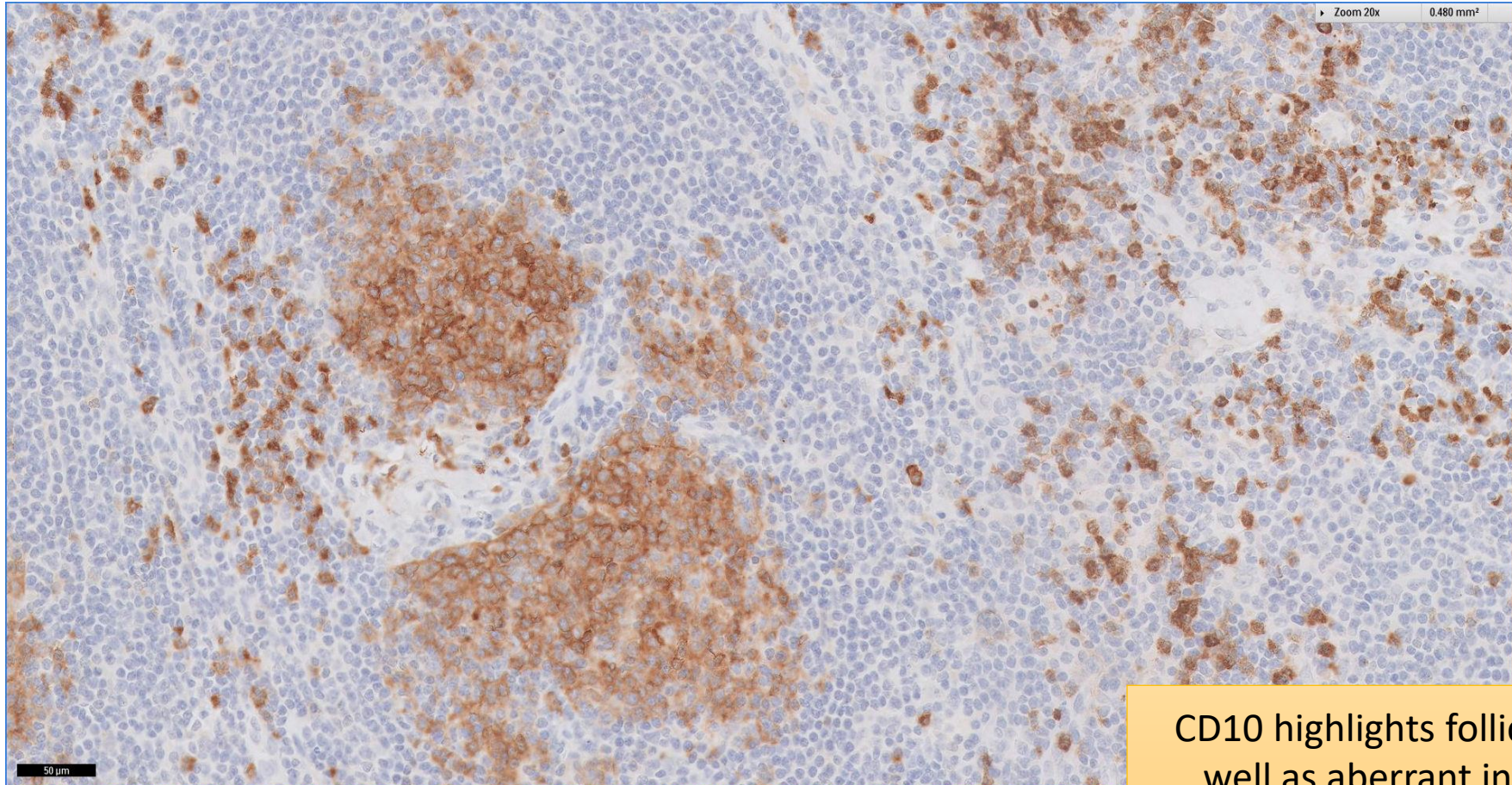
Some follicles appears lobulated

SGH CASE 36: 17RE160 CD10



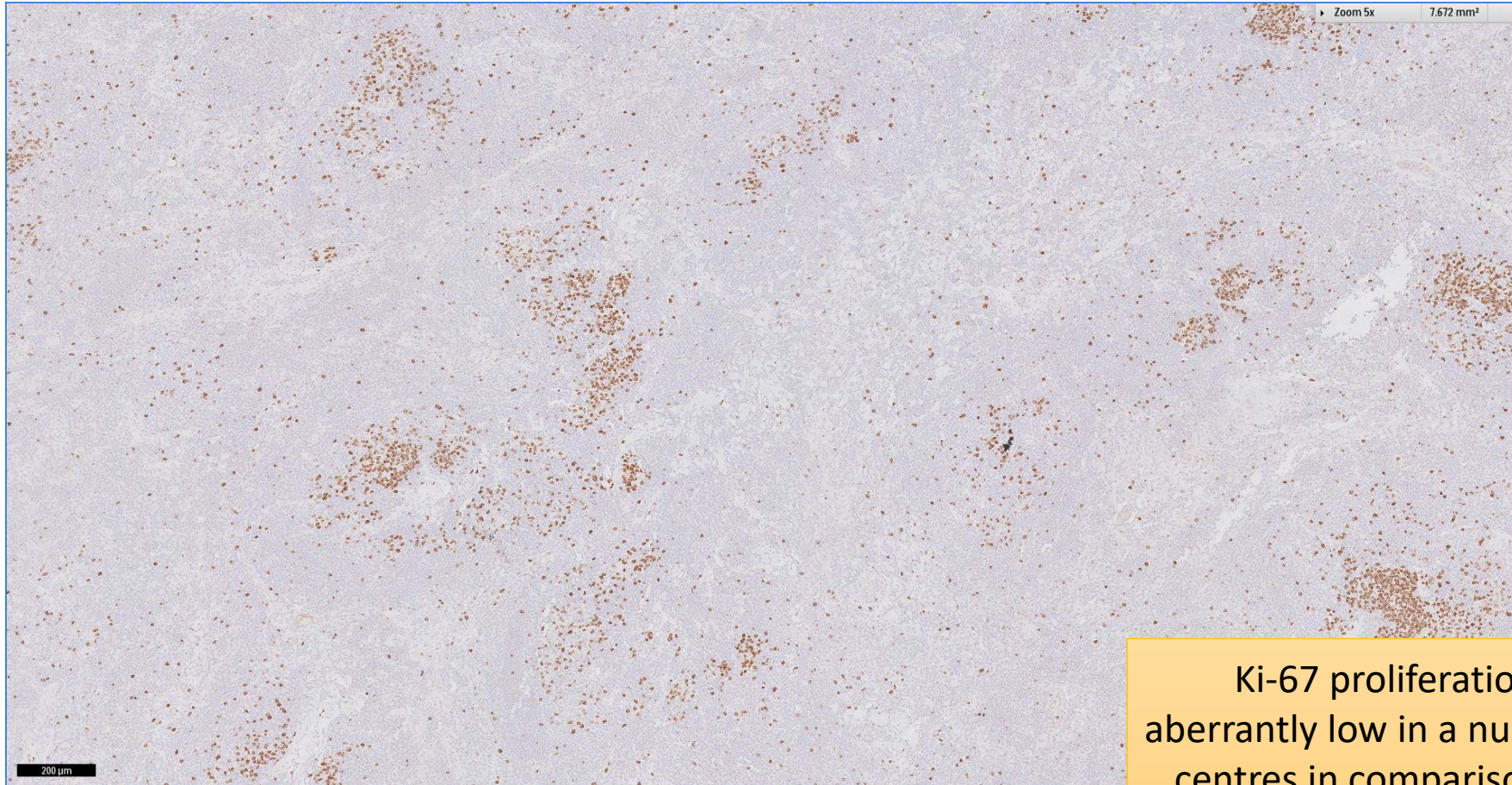
CD10 highlights follicle centres as well as aberrant interfollicular infiltration by CD10(+) lymphocytes

SGH CASE 36: 17RE160 CD10



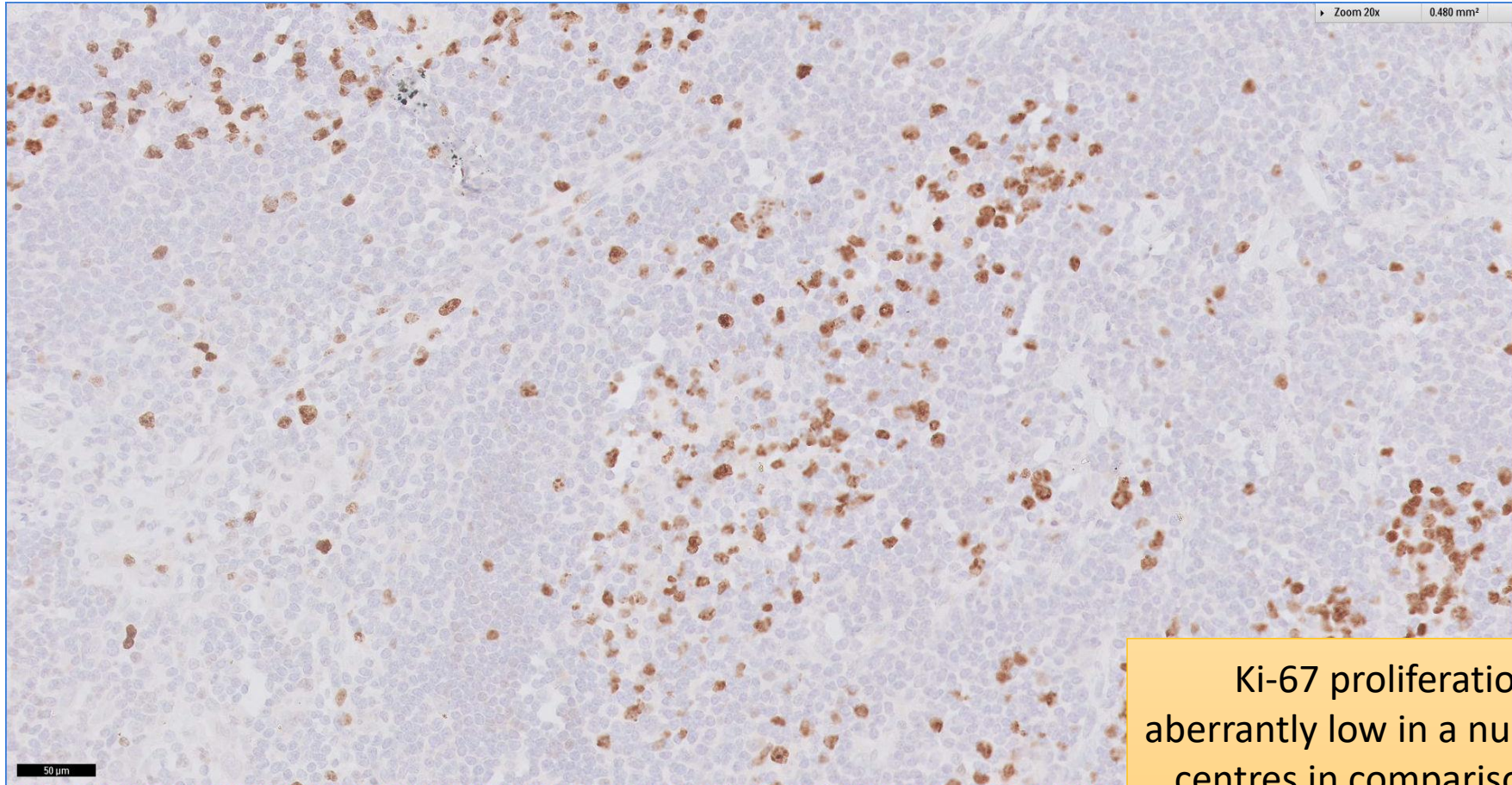
CD10 highlights follicle centres as well as aberrant interfollicular infiltration by CD10(+) lymphocytes

SGH CASE 36: 17RE160 KI67



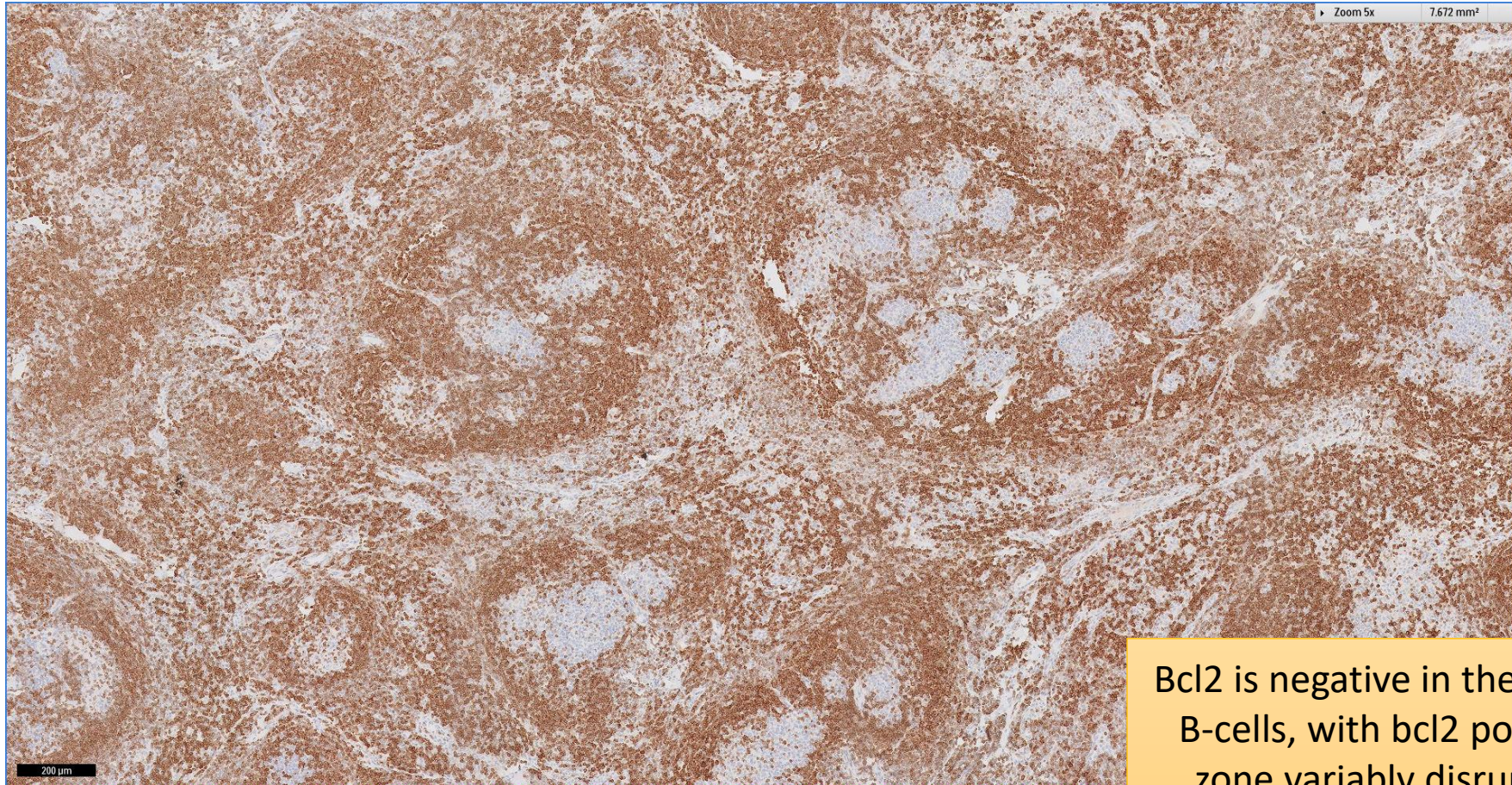
Ki-67 proliferation index is aberrantly low in a number of follicle centres in comparison to reactive germinal centres

SGH CASE 36: 17RE160 KI67



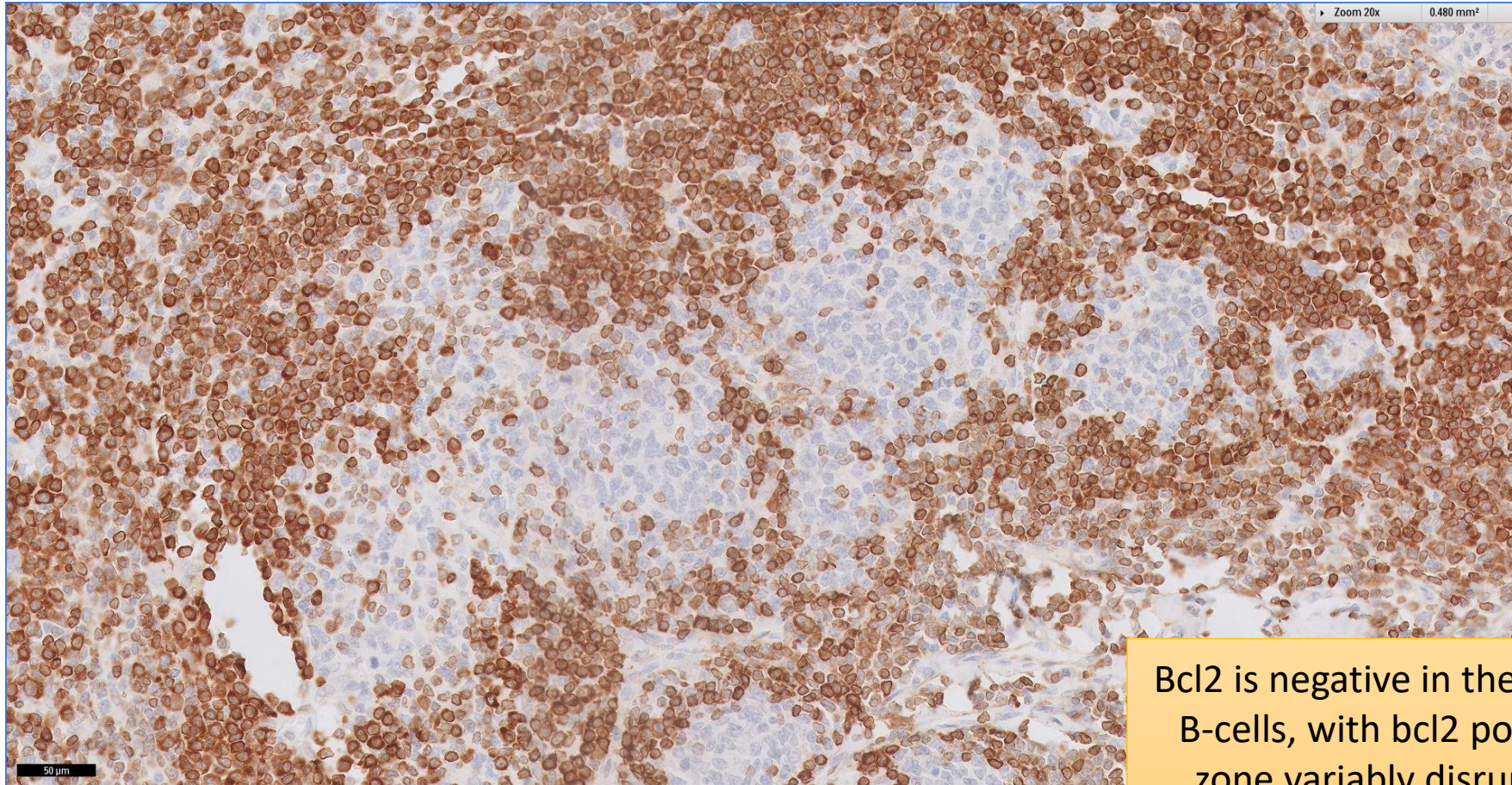
Ki-67 proliferation index is aberrantly low in a number of follicle centres in comparison to reactive germinal centres

SGH CASE 36: 17RE160 BCL2



Bcl2 is negative in the follicle centre B-cells, with bcl2 positive mantle zone variably disrupting follicle centres

SGH CASE 36: 17RE160 BCL2



Bcl2 is negative in the follicle centre B-cells, with bcl2 positive mantle zone variably disrupting follicle centres

SGH CASE 36: 17RE160

- Diagnosis
 - Follicular lymphoma, Grades 2 and 3A (Floral variant, bcl-2 negative)