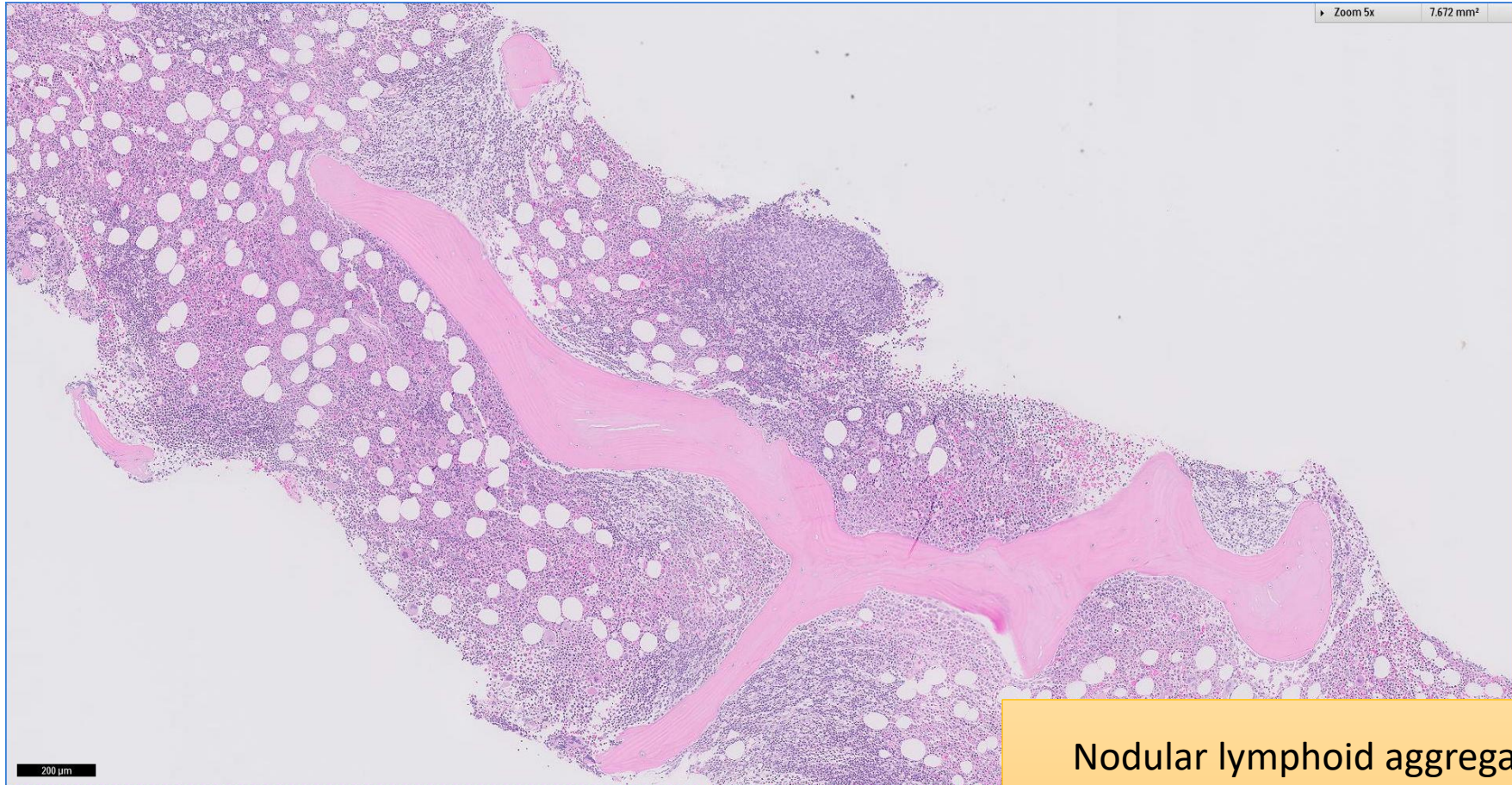


SGH CASE 35: 17RE159

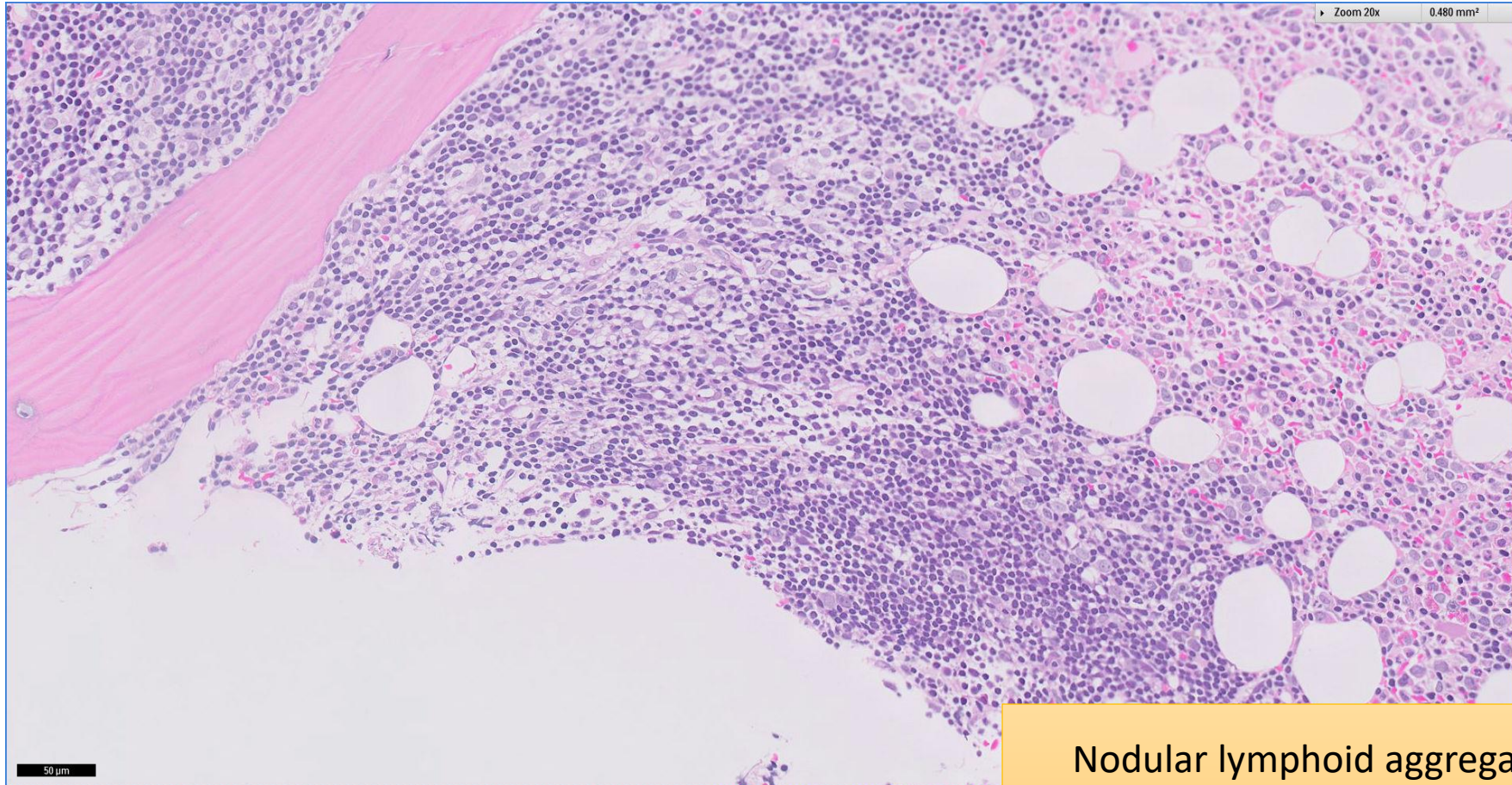
- Clinical History:
 - 60+ years old (late 60s), Female. Peripheral blood lymphocytosis ($42.49 \times 10^9/L$). Marked splenomegaly (19.7cm) on CT.
- Specimen:
 - Bone marrow trephine biopsy.

SGH CASE 35: 17RE159 H&E



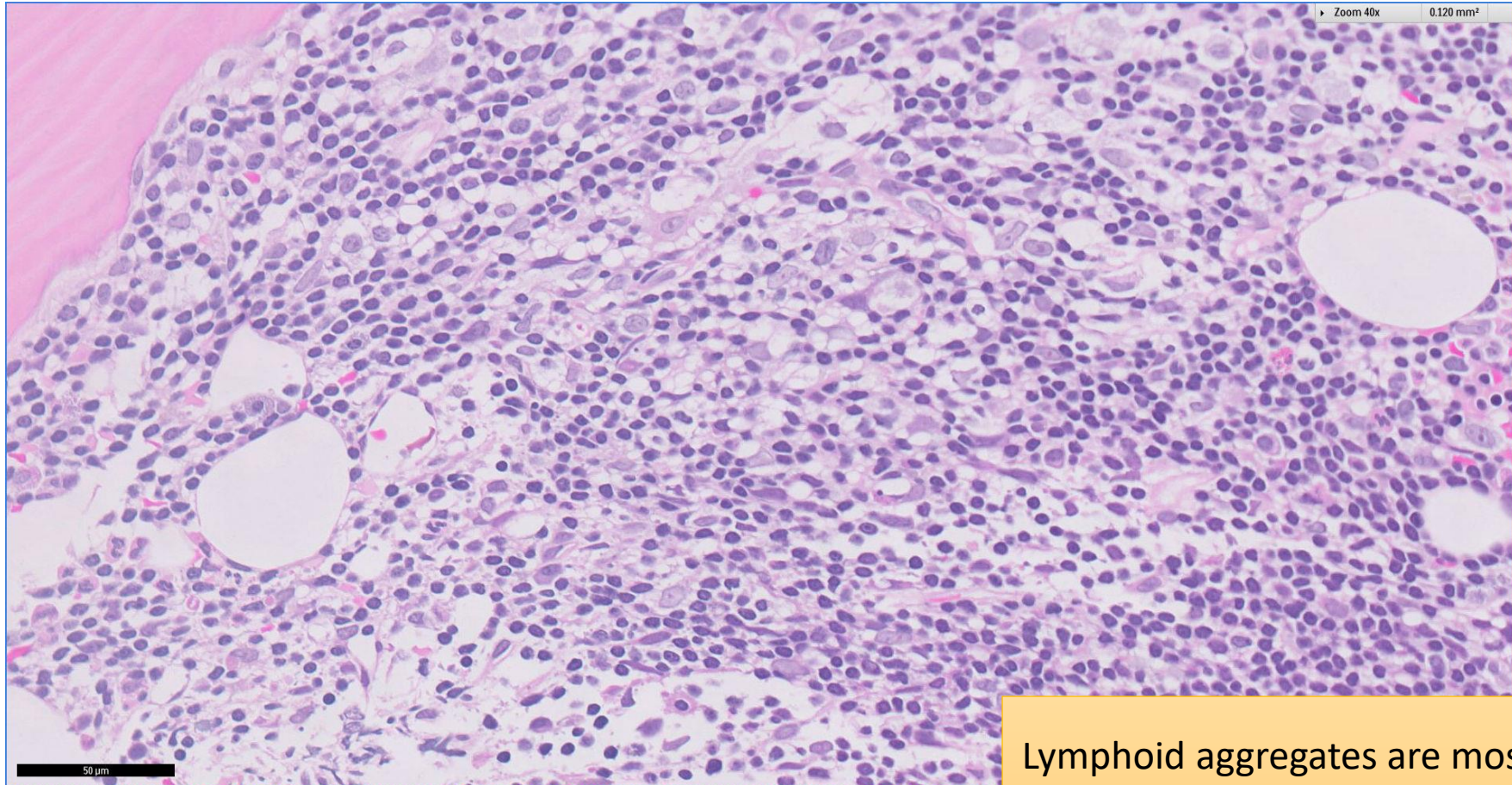
Nodular lymphoid aggregates both in interstitium and paratrabeacular location

SGH CASE 35: 17RE159 H&E



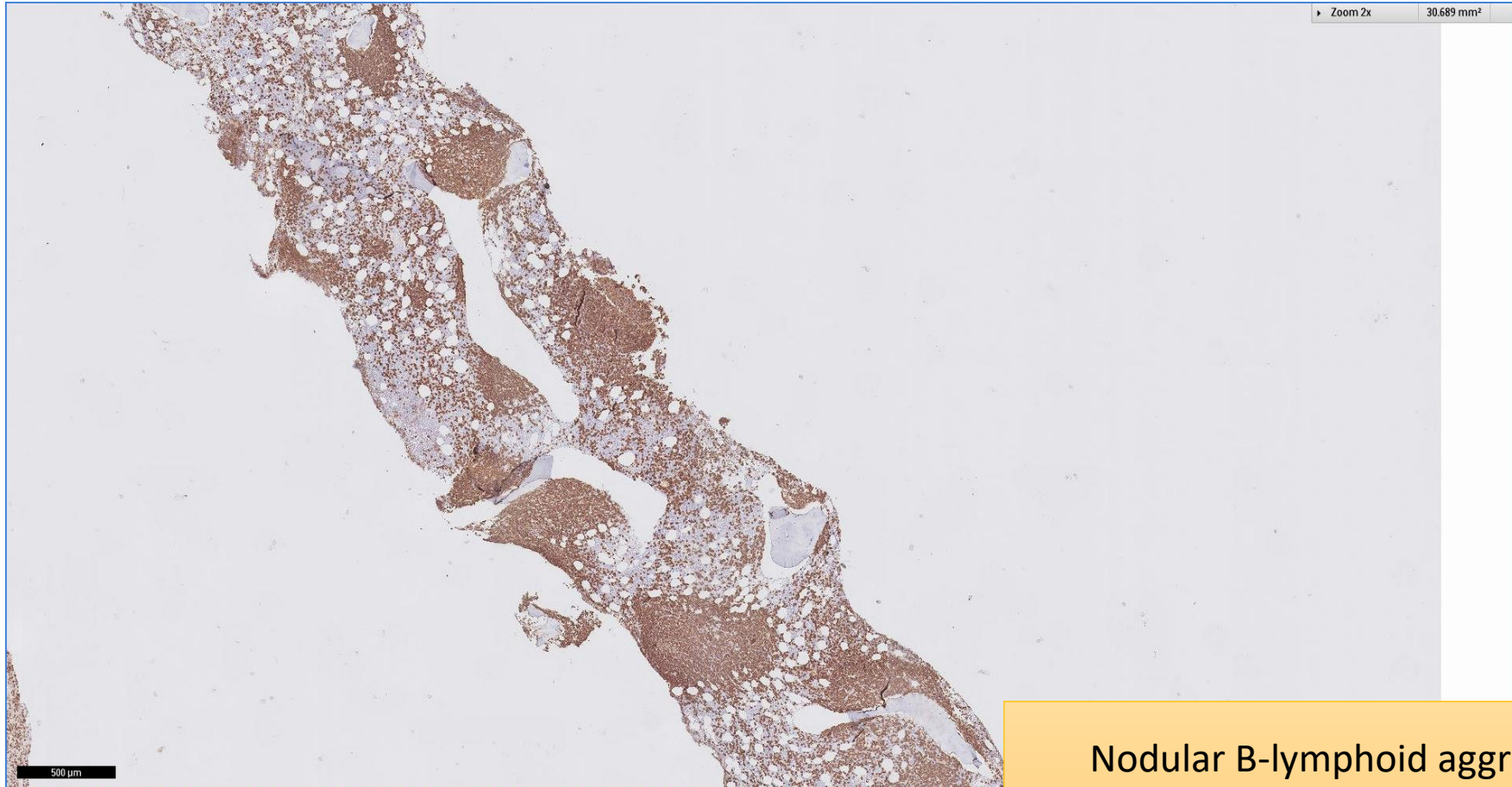
Nodular lymphoid aggregates both in interstitium and paratrabeacular location

SGH CASE 35: 17RE159 H&E



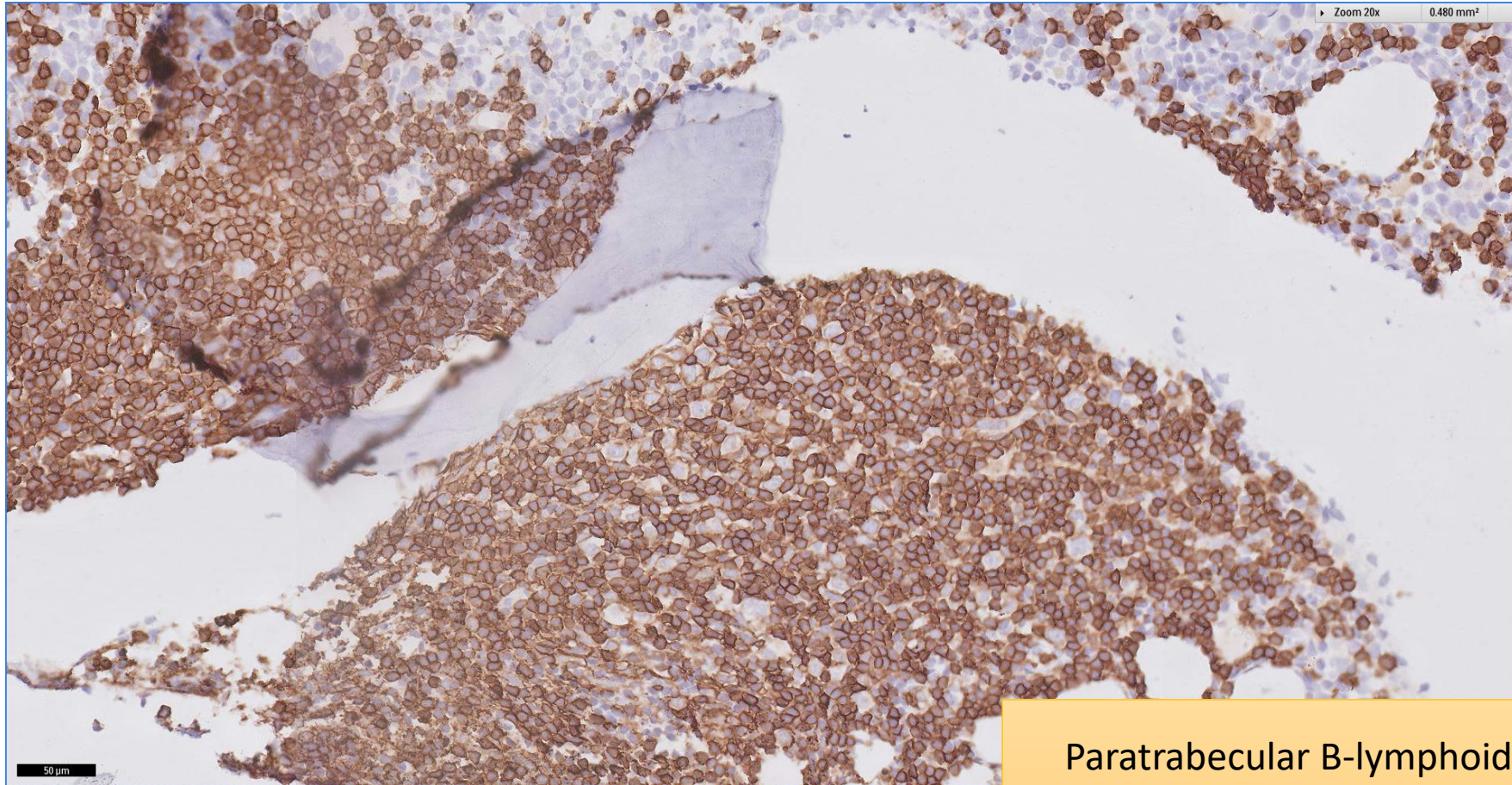
Lymphoid aggregates are mostly composed of small-to-medium sized lymphocytes

SGH CASE 35: 17RE159 CD20



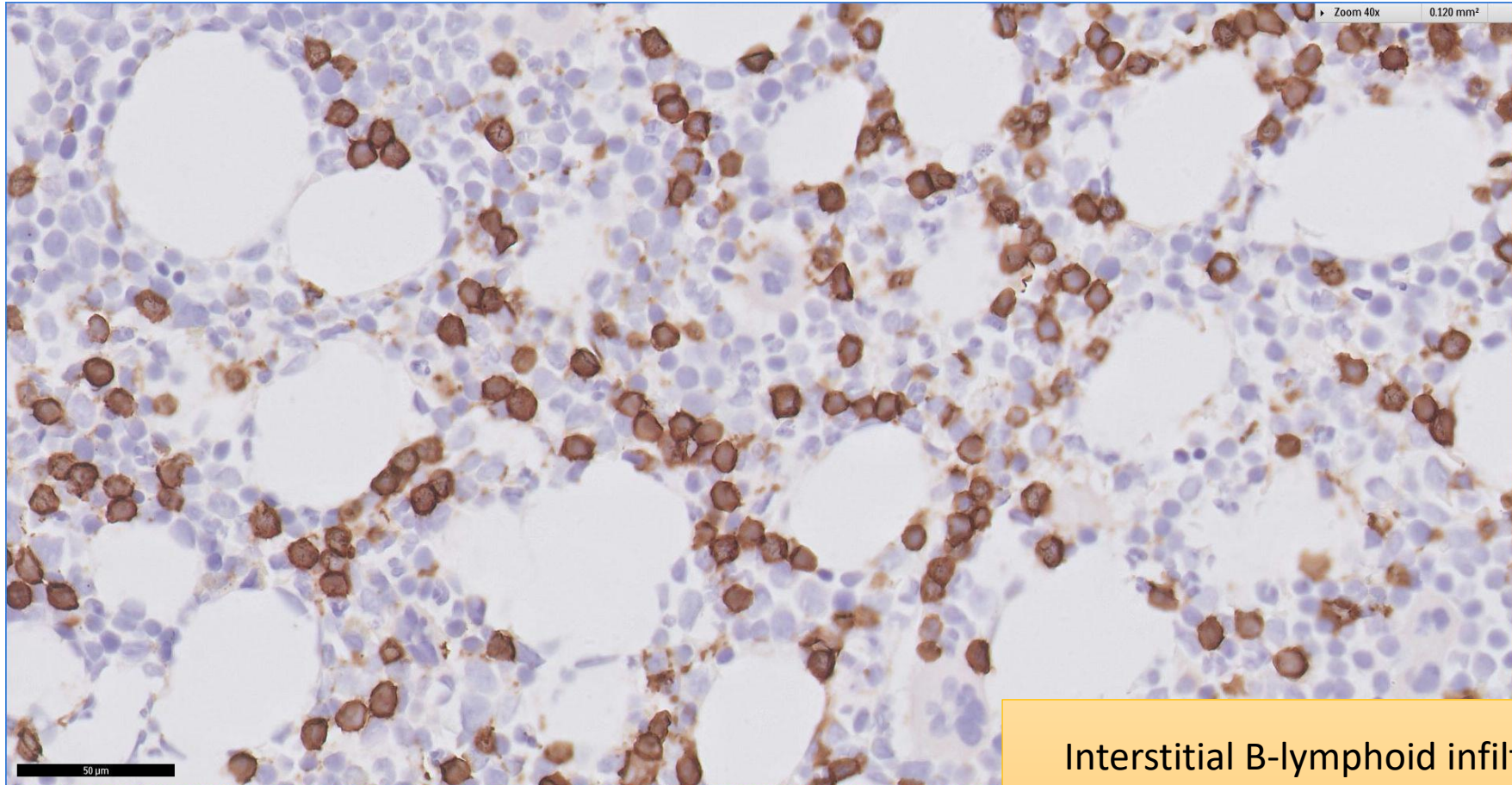
Nodular B-lymphoid aggregates are highlighted by CD20

SGH CASE 35: 17RE159 CD20



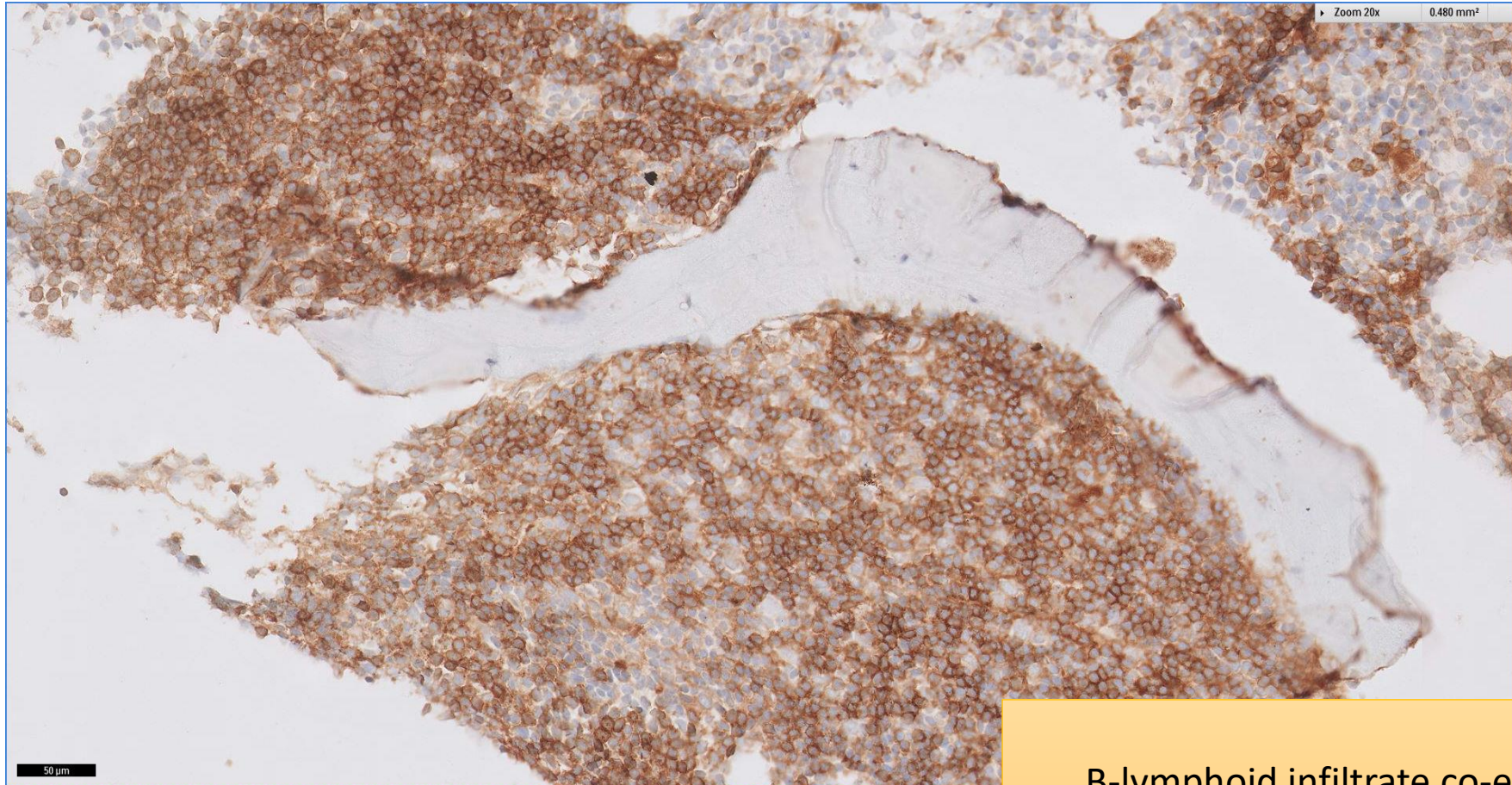
Paratrabeular B-lymphoid aggregates
highlighted by CD20

SGH CASE 35: 17RE159 CD20



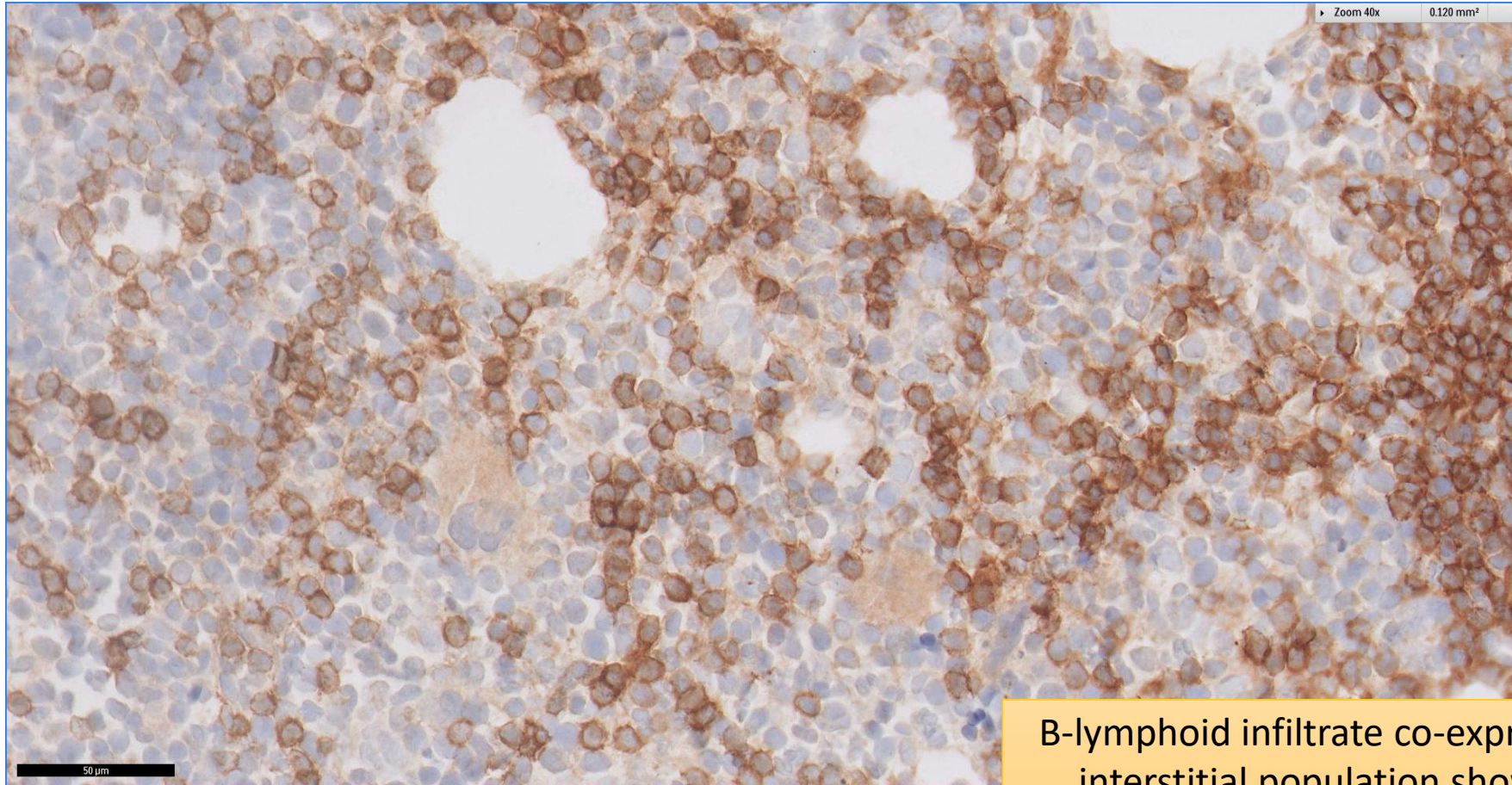
Interstitial B-lymphoid infiltrate shows
intra-sinusoidal infiltration

SGH CASE 35: 17RE159 IgD



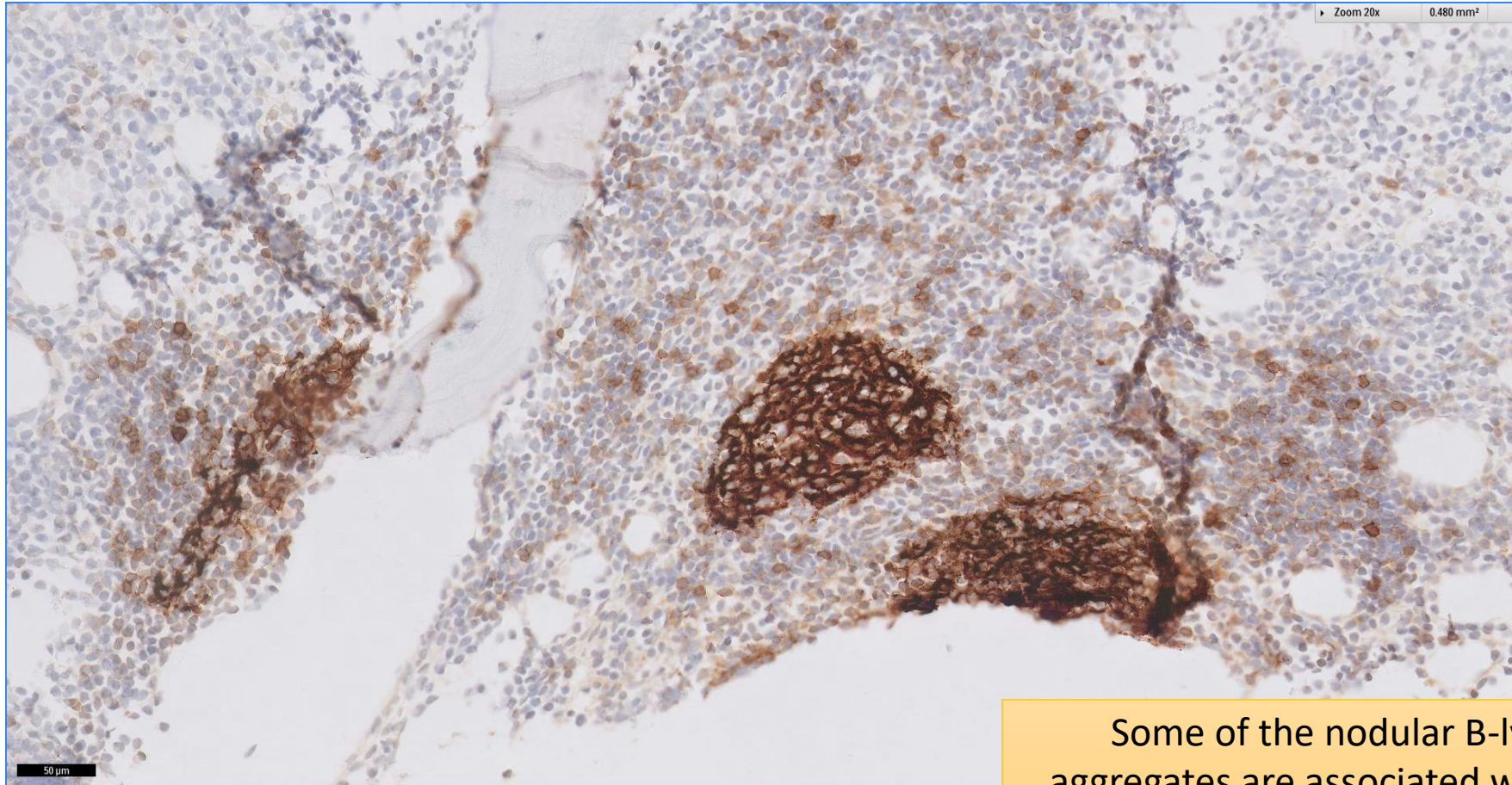
B-lymphoid infiltrate co-express IgD

SGH CASE 35: 17RE159 IgD



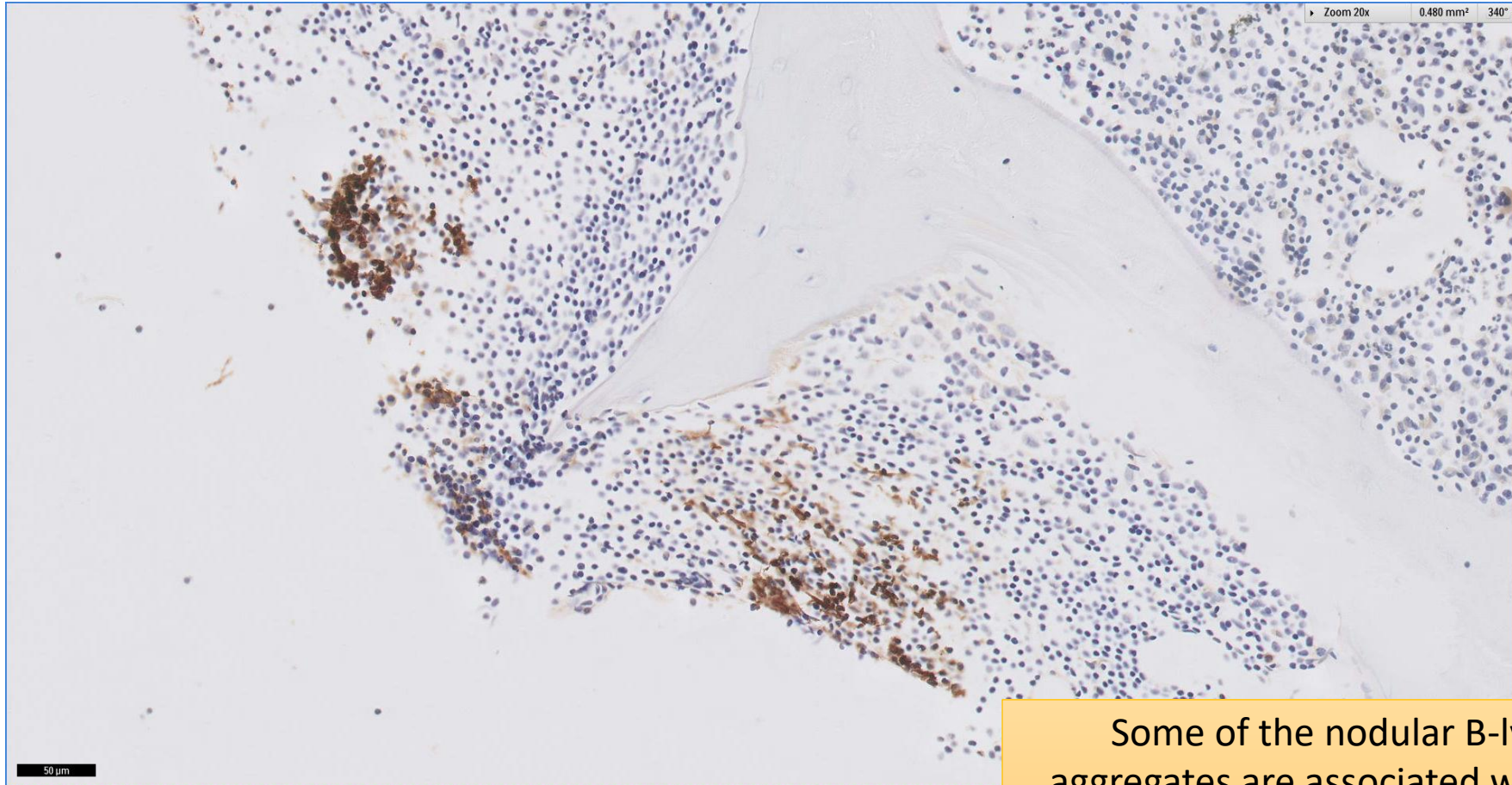
B-lymphoid infiltrate co-express IgD, with interstitial population showing intra-sinusoidal infiltration

SGH CASE 35: 17RE159 CD23



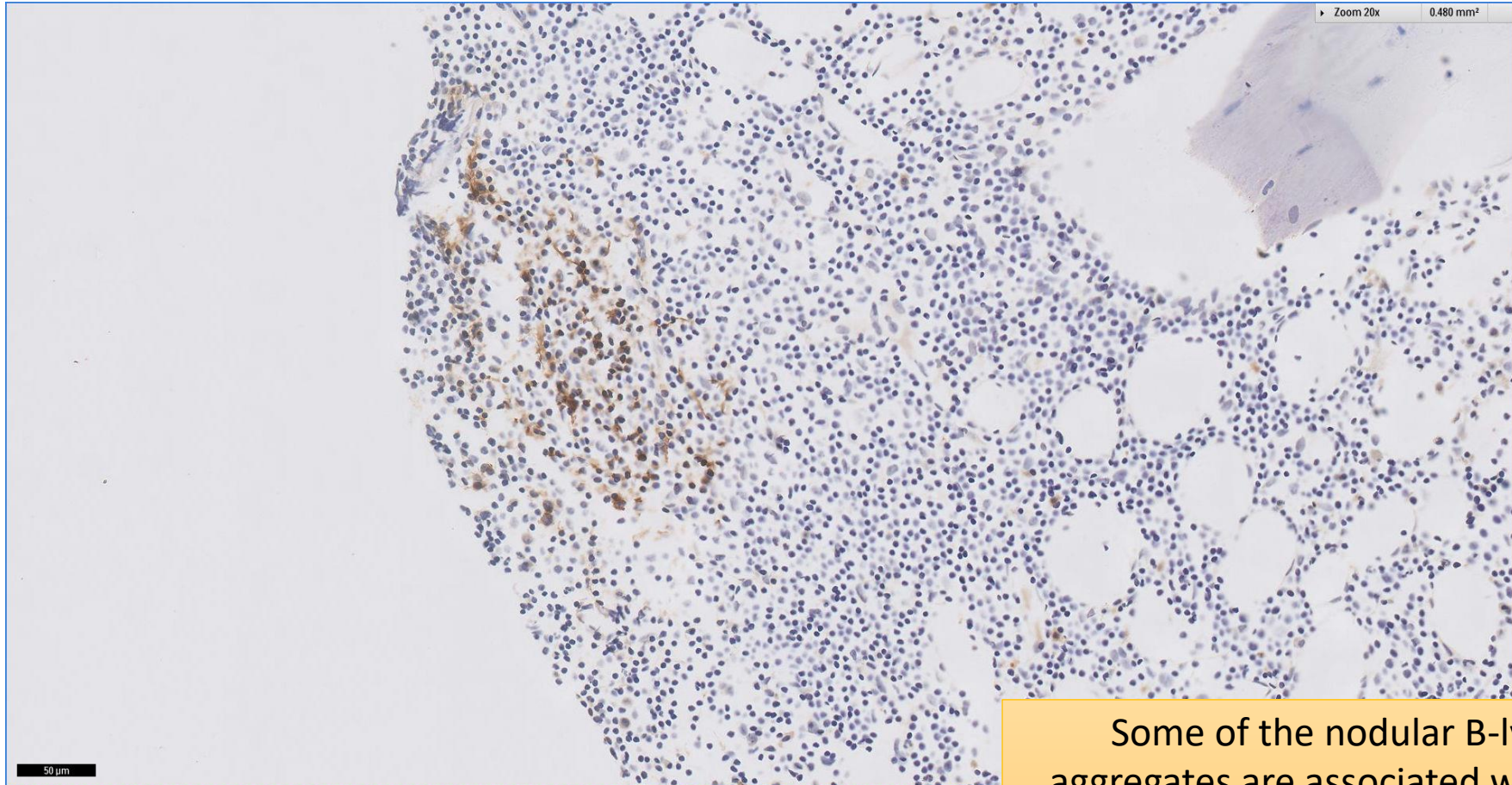
Some of the nodular B-lymphoid aggregates are associated with follicular dendritic meshworks

SGH CASE 35: 17RE159 CD21



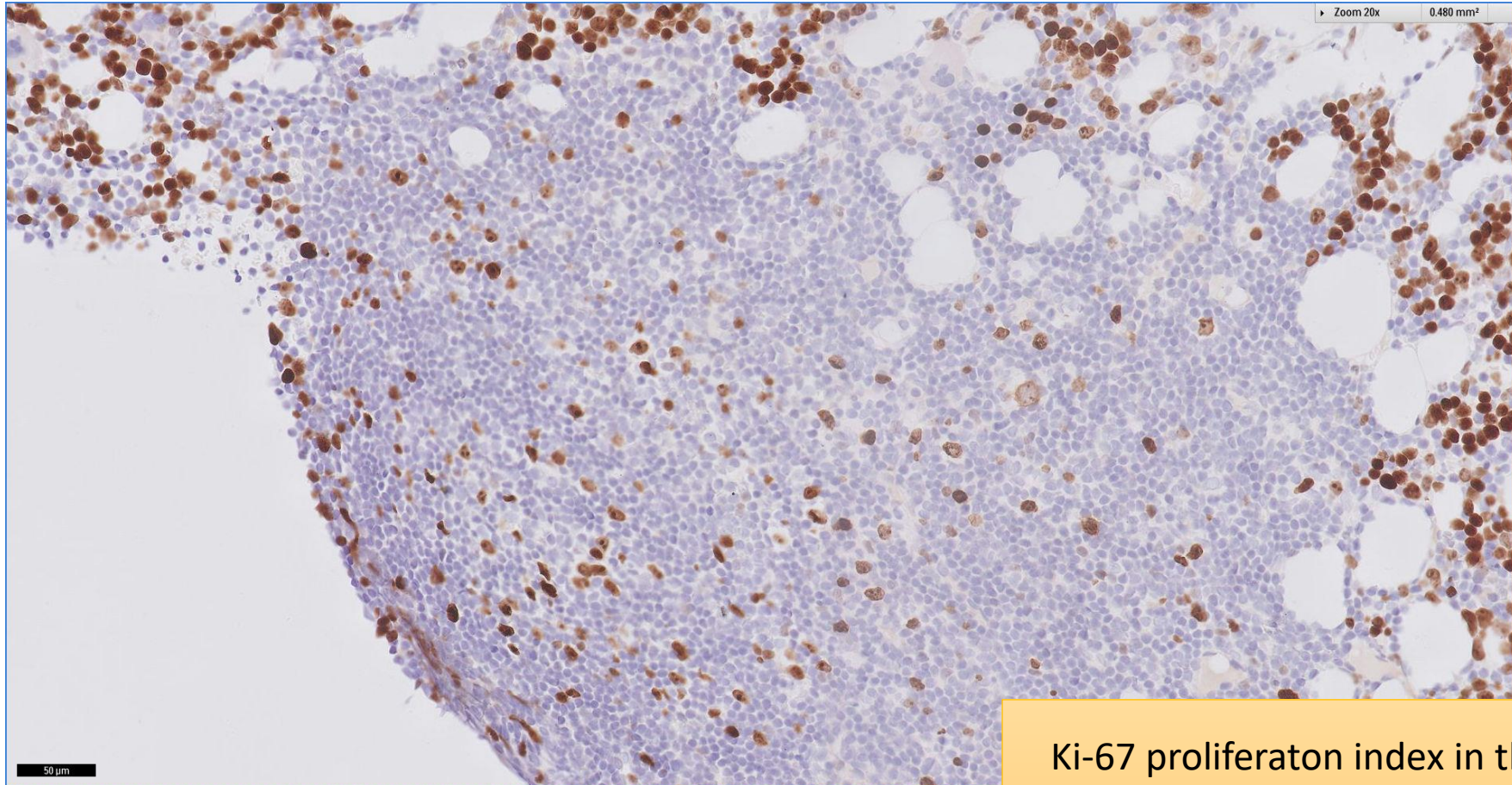
Some of the nodular B-lymphoid aggregates are associated with follicular dendritic meshworks

SGH CASE 35: 17RE159 CD21



Some of the nodular B-lymphoid aggregates are associated with follicular dendritic meshworks

SGH CASE 35: 17RE159 KI67



Ki-67 proliferaton index in the lymphoid infiltrate is generally low

SGH CASE 35: 17RE159

- Diagnosis
 - Involved by Marginal Zone Lymphoma (Likely Splenic Origin)
- B-lymphomatous cells are negative for cyclin D1, CD5 and CD123.