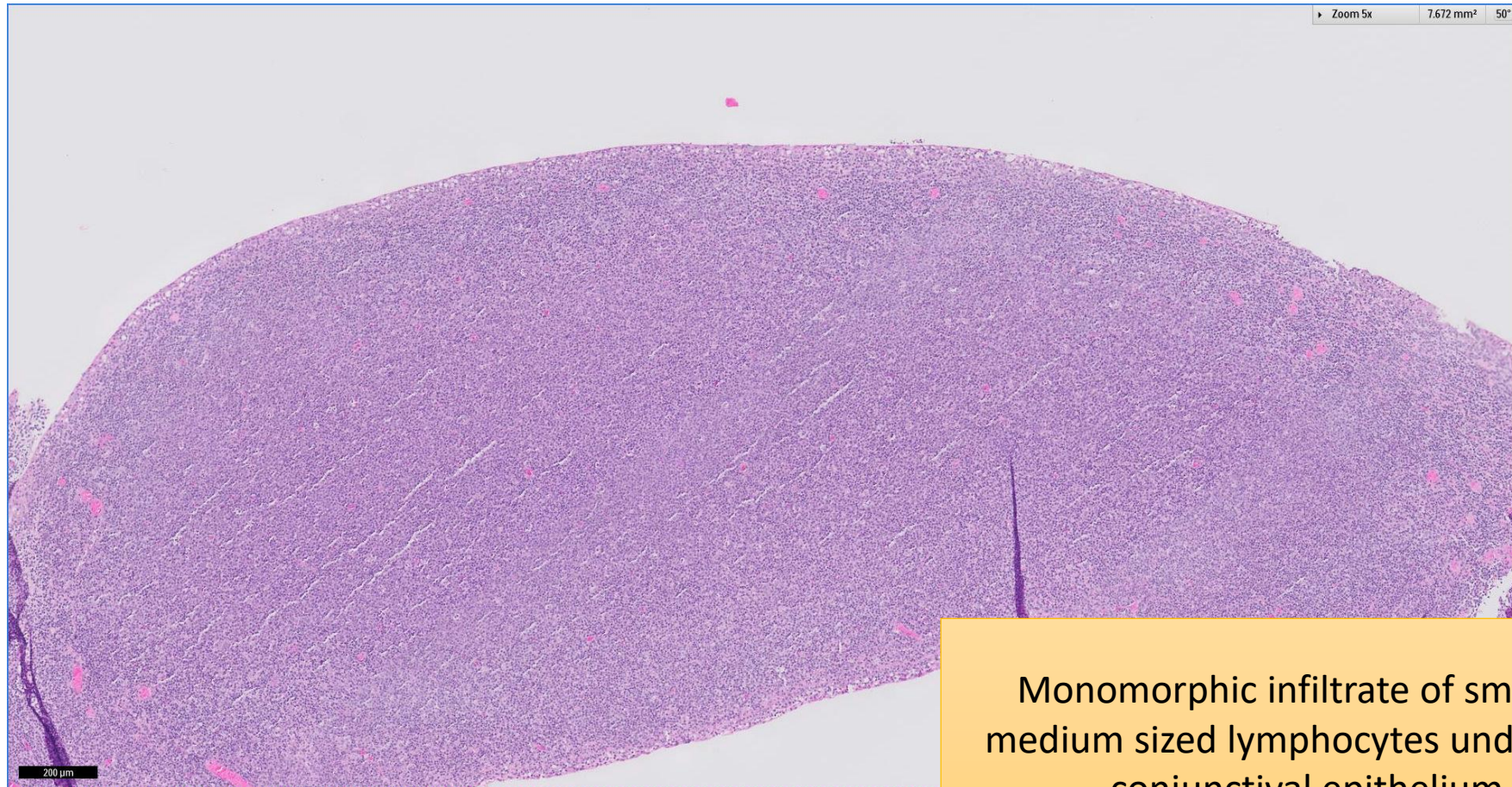


SGH CASE 33: 17RE156 & RE157

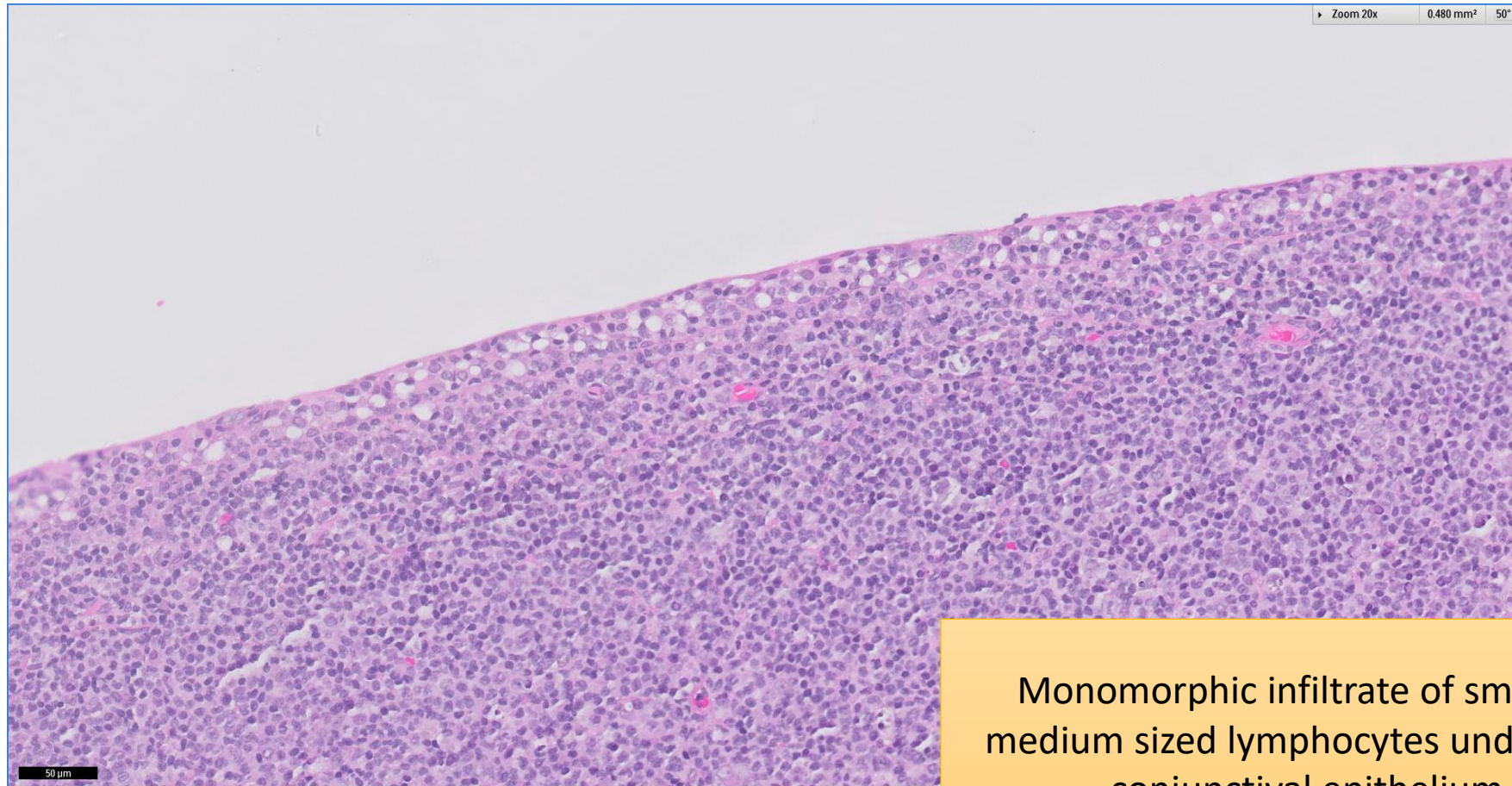
- Clinical History:
 - 70+ years old, Male. Had conjunctival growth right eye 1 year ago. Now with left nasopharyngeal mass.
- Specimen:
 - Right conjunctival biopsy (17RE156) one year ago and left post nasal space biopsy (17RE157)

SGH CASE 33: 17RE156 CONJUNCTIVA H&E



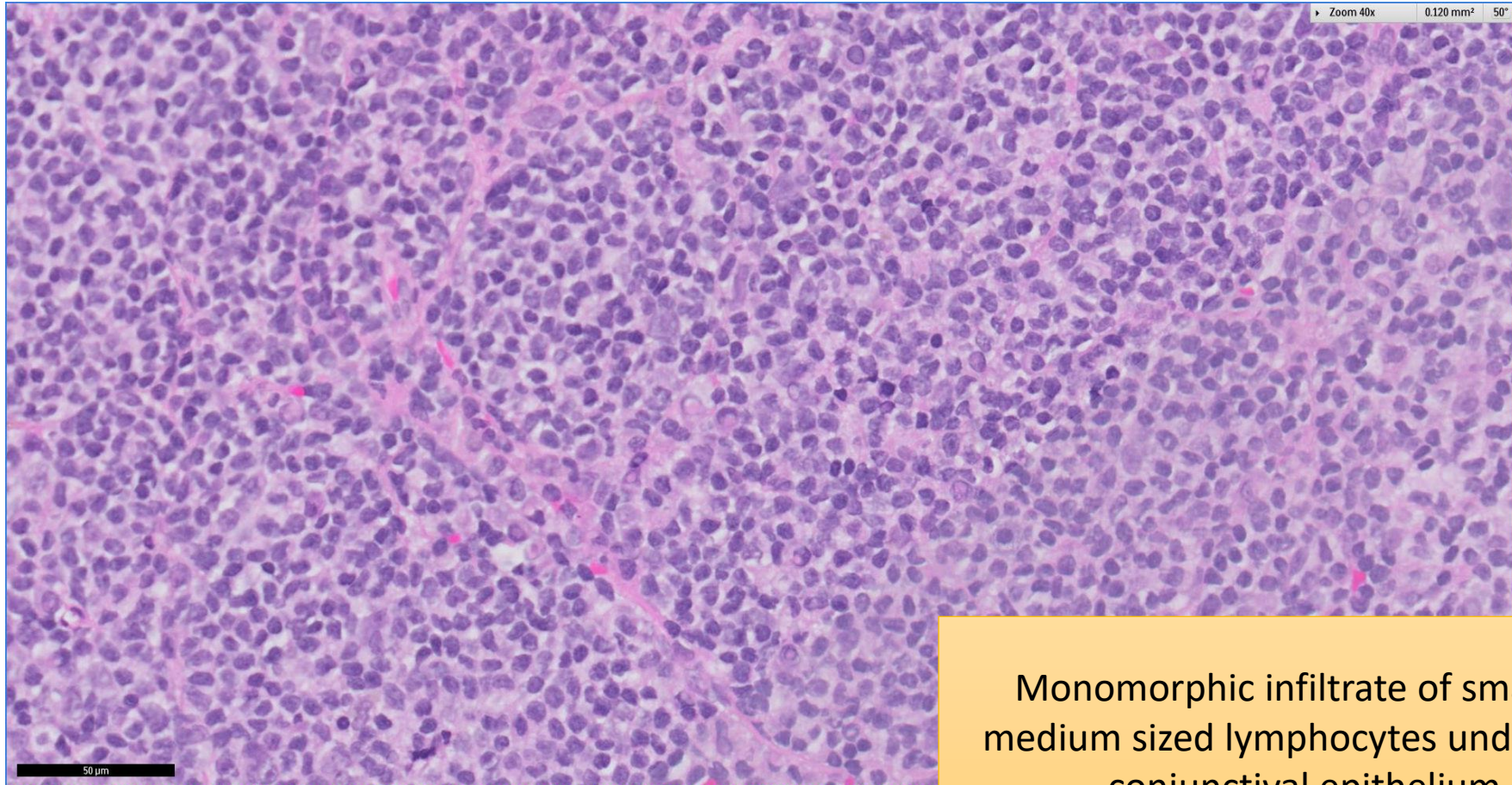
Monomorphic infiltrate of small to medium sized lymphocytes underlying conjunctival epithelium

SGH CASE 33: 17RE156 CONJUNCTIVA H&E



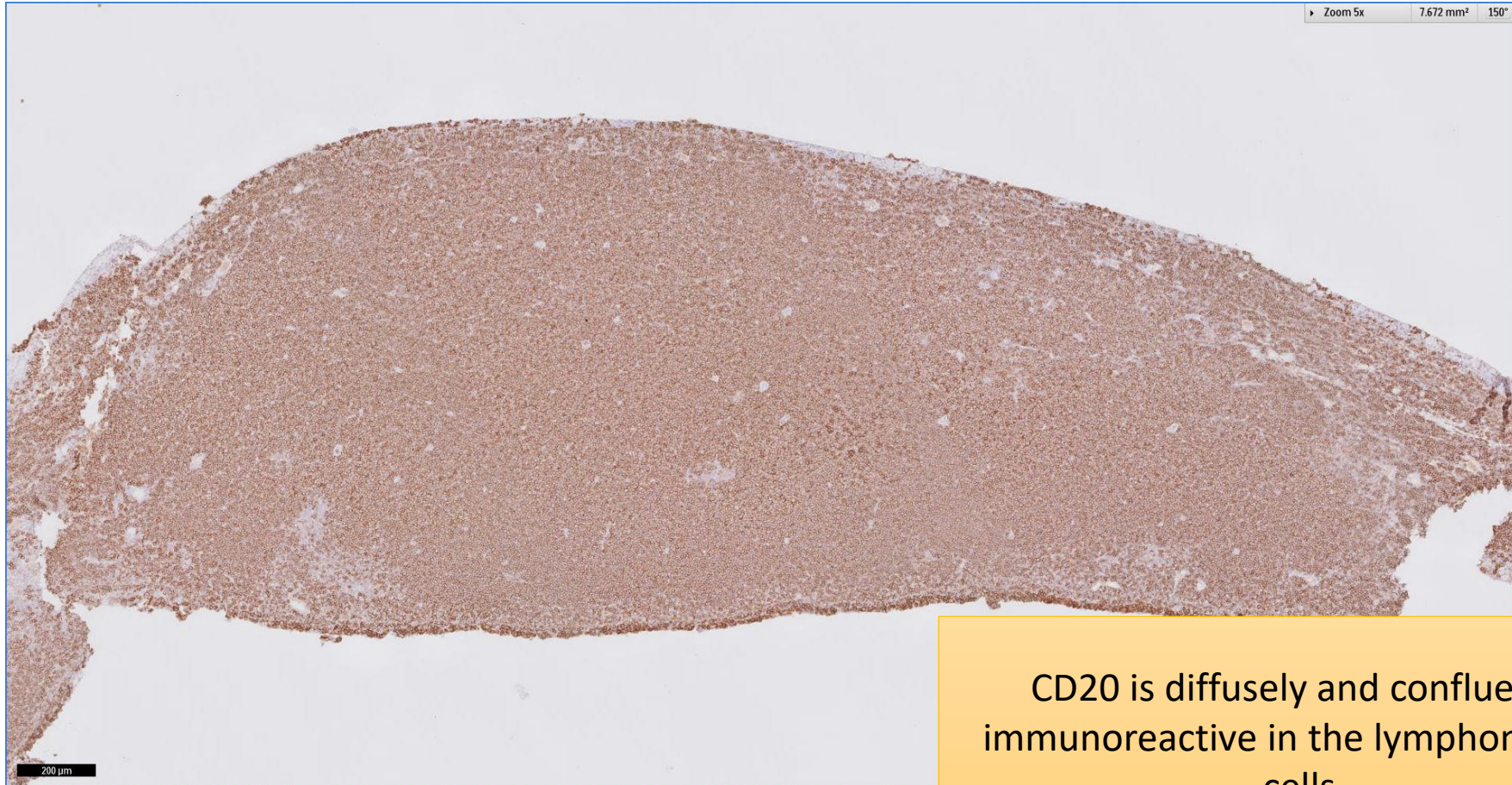
Monomorphic infiltrate of small to medium sized lymphocytes underlying conjunctival epithelium

SGH CASE 33: 17RE156 CONJUNCTIVA H&E



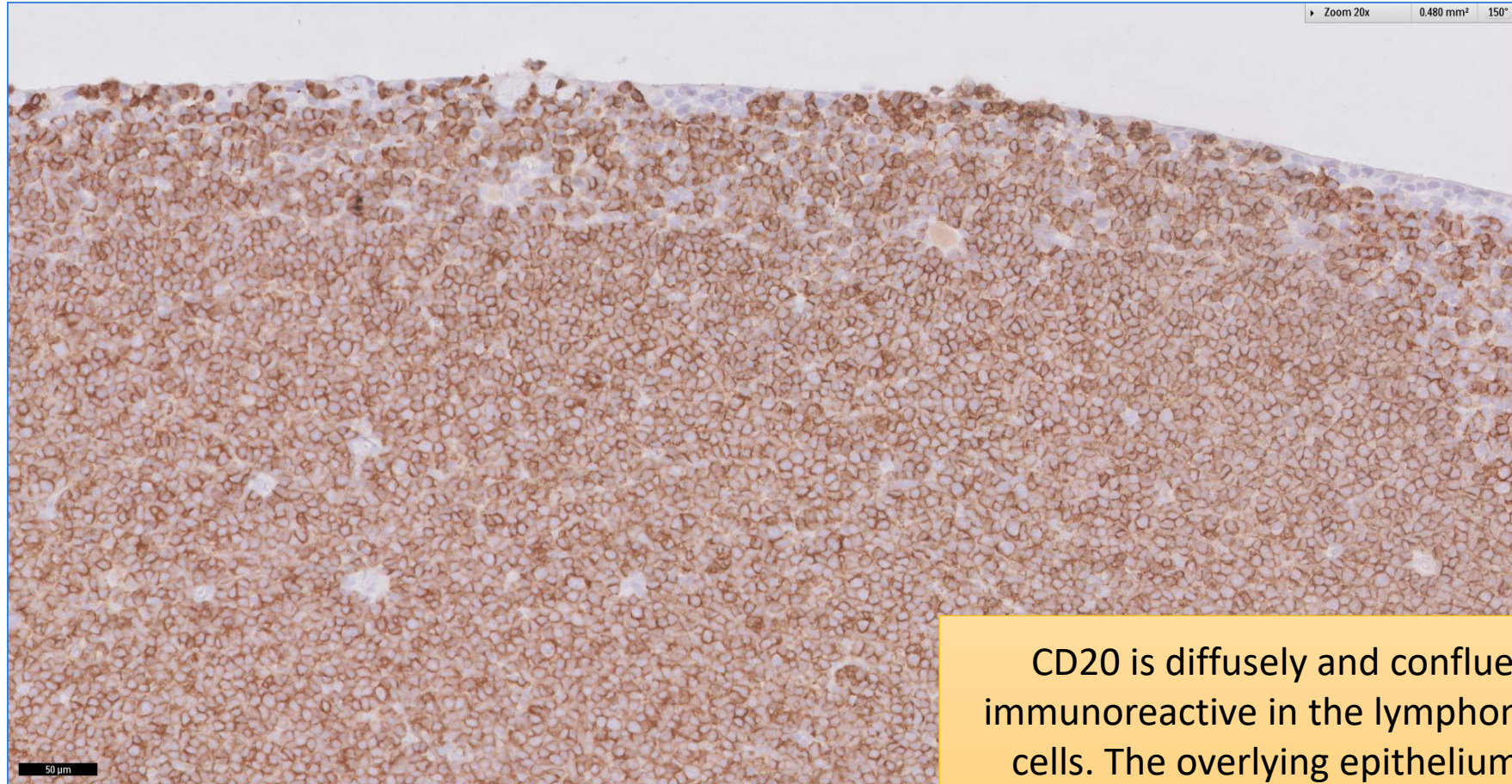
Monomorphic infiltrate of small to medium sized lymphocytes underlying conjunctival epithelium

SGH CASE 33: 17RE156 CONJUNCTIVA CD20



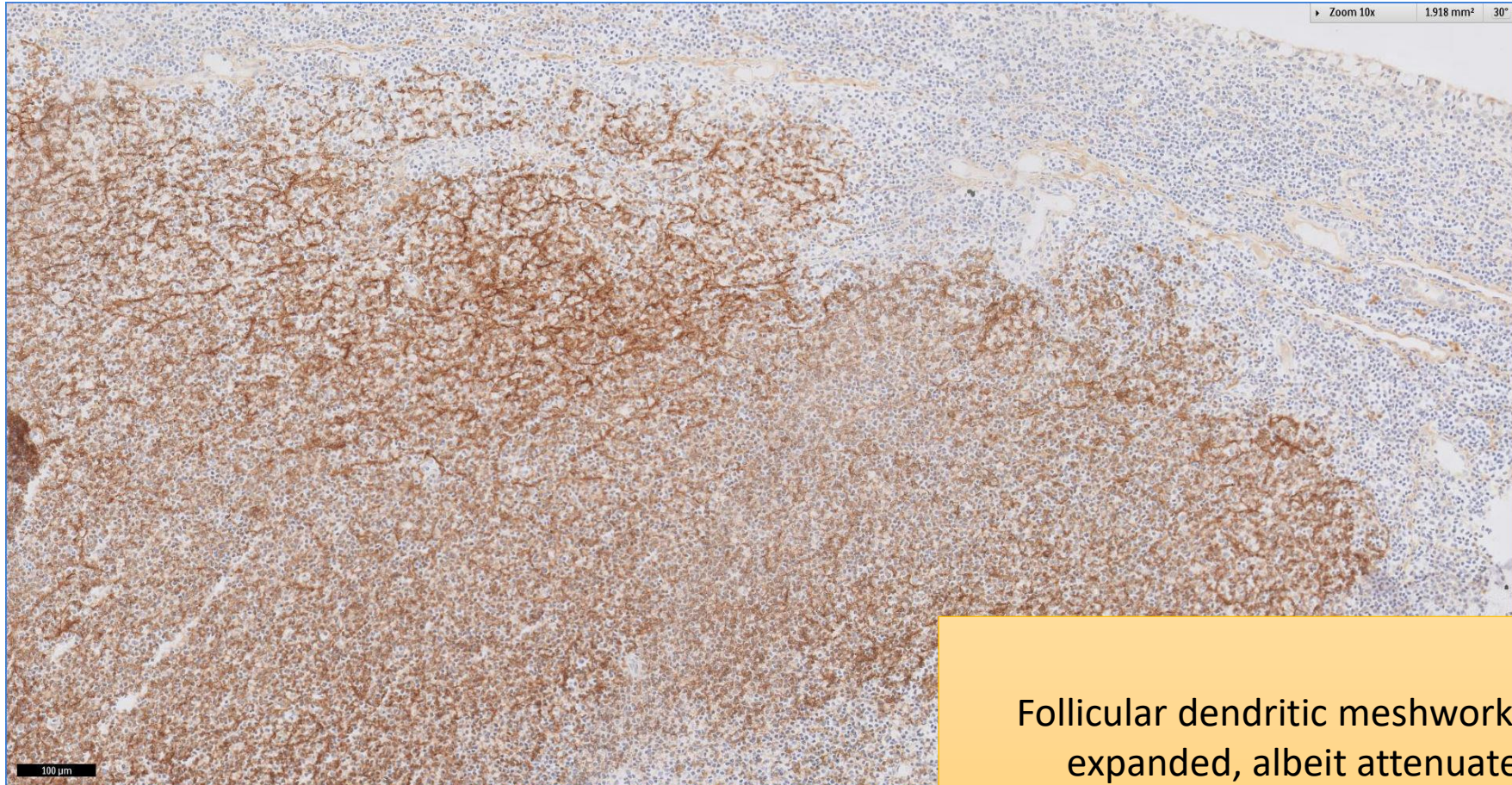
CD20 is diffusely and confluent immunoreactive in the lymphomatous cells.

SGH CASE 33: 17RE156 CONJUNCTIVA CD20



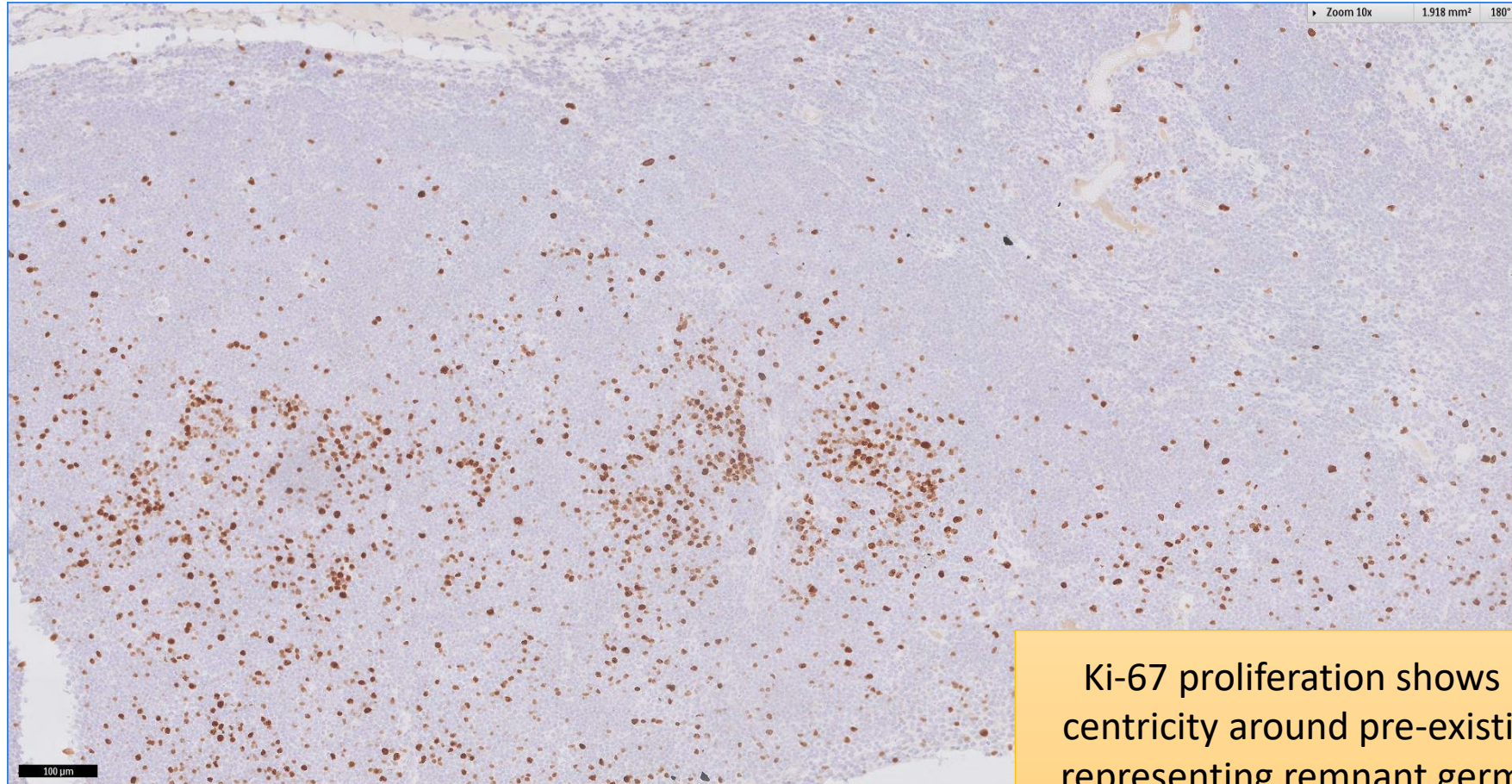
CD20 is diffusely and confluent immunoreactive in the lymphomatous cells. The overlying epithelium also shows B-lymphocytic infiltration.

SGH CASE 33: 17RE156 CONJUNCTIVA CD21



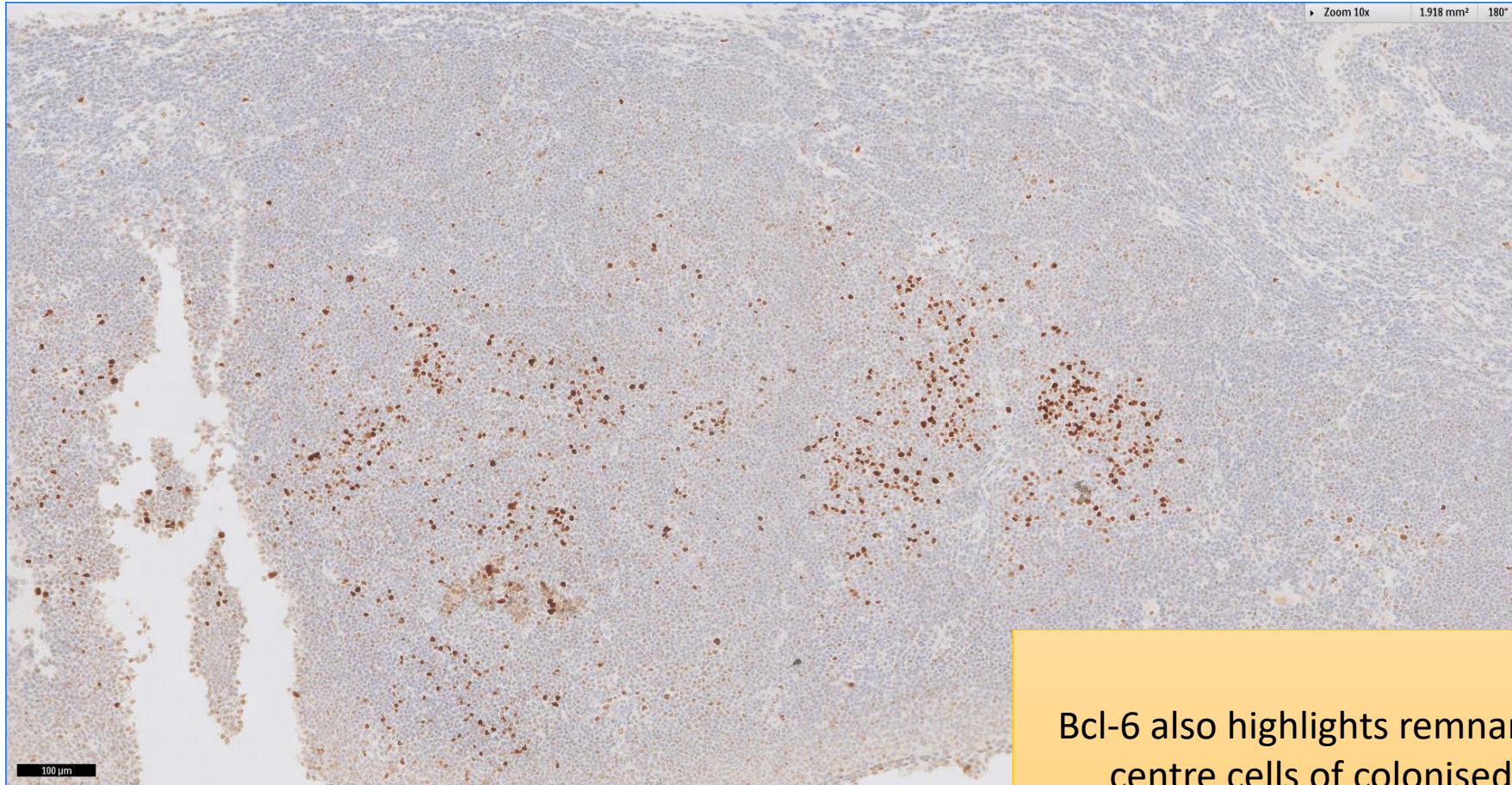
Follicular dendritic meshworks are expanded, albeit attenuated

SGH CASE 33: 17RE156 CONJUNCTIVA KI67



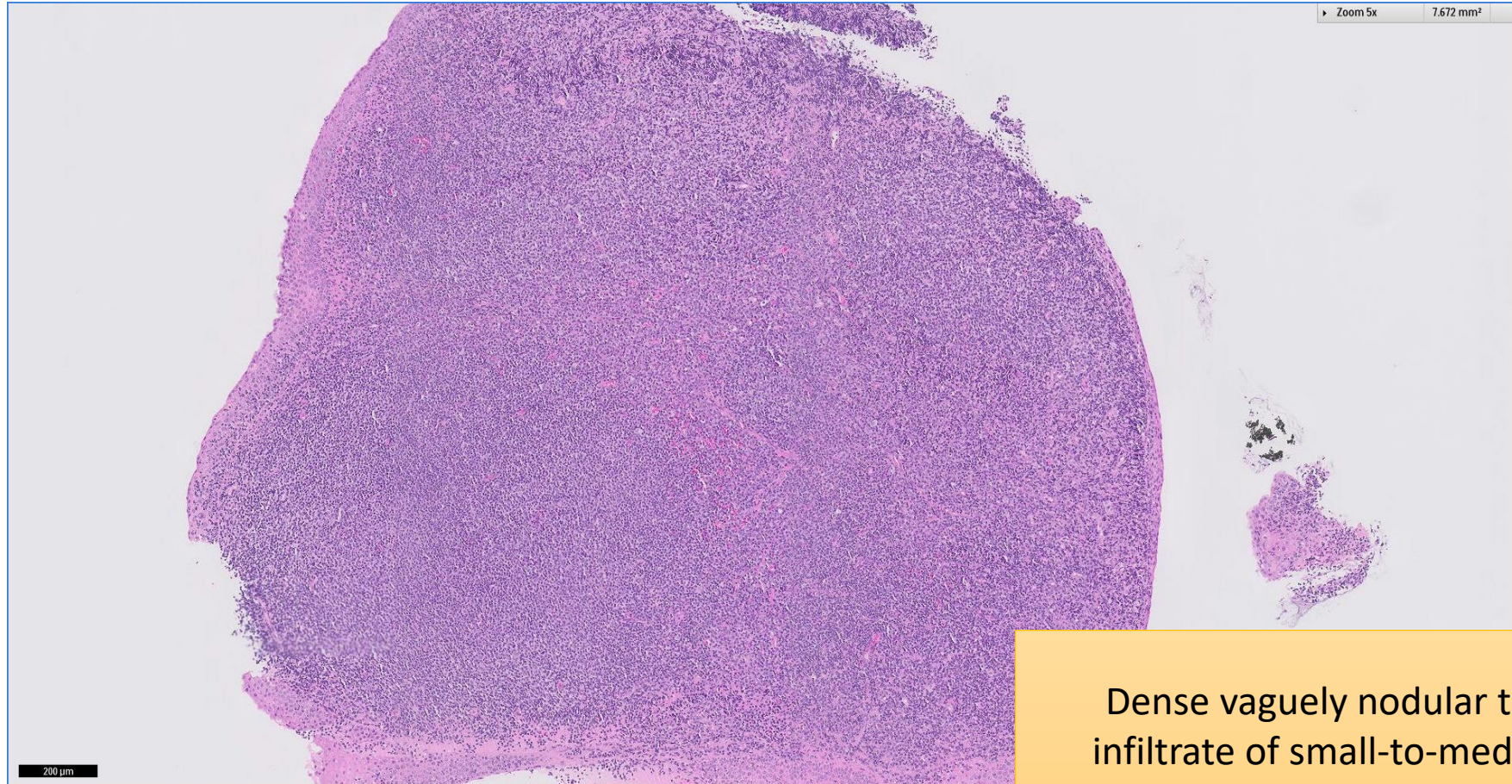
Ki-67 proliferation shows ill-defined centricity around pre-existing follicles, representing remnant germinal centre cells of colonised follicles

SGH CASE 33: 17RE156 CONJUNCTIVA BCL6



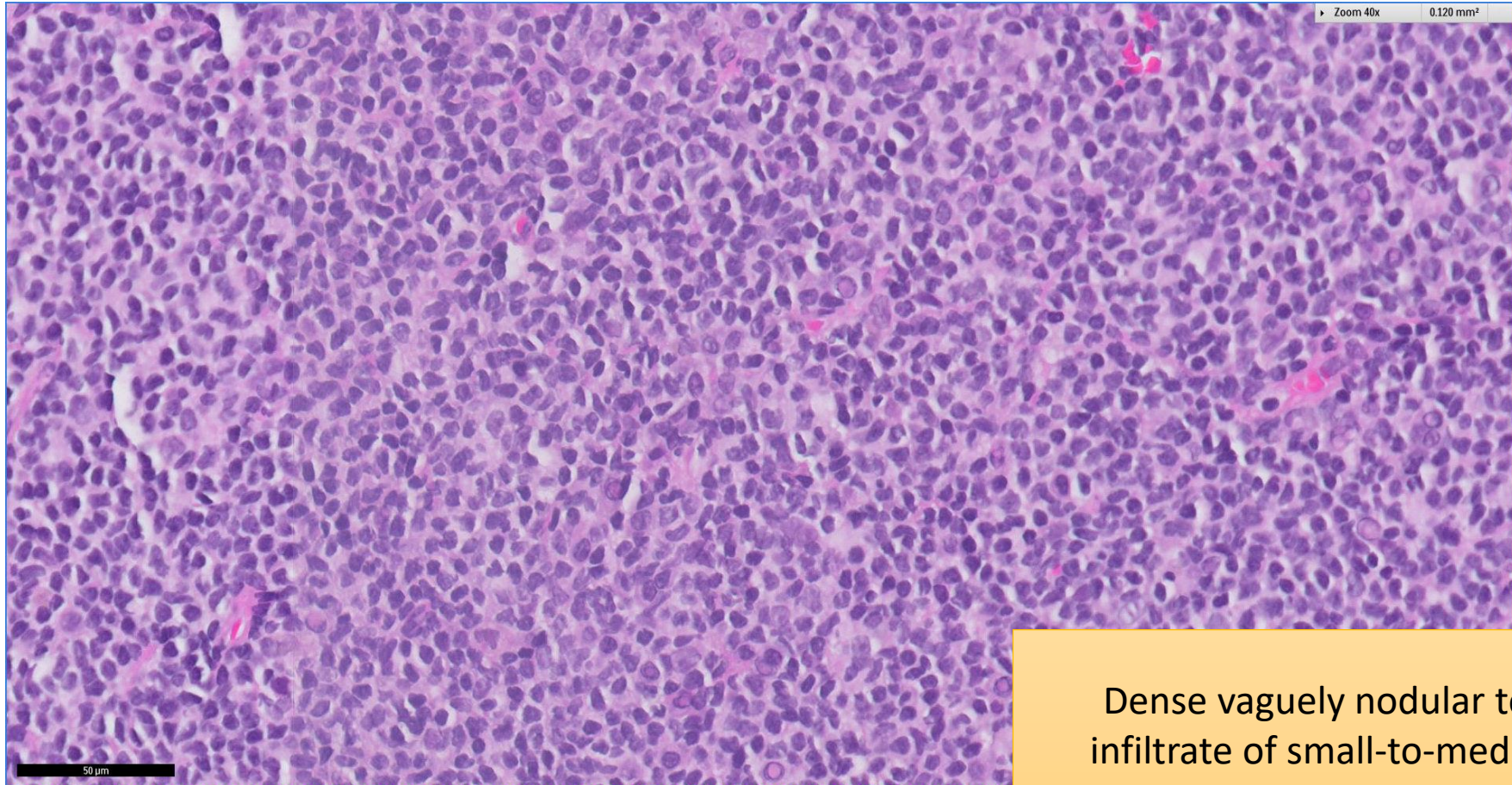
Bcl-6 also highlights remnant germinal
centre cells of colonised follicles

SGH CASE 33: 17RE157 POST-NASAL SPACE H&E



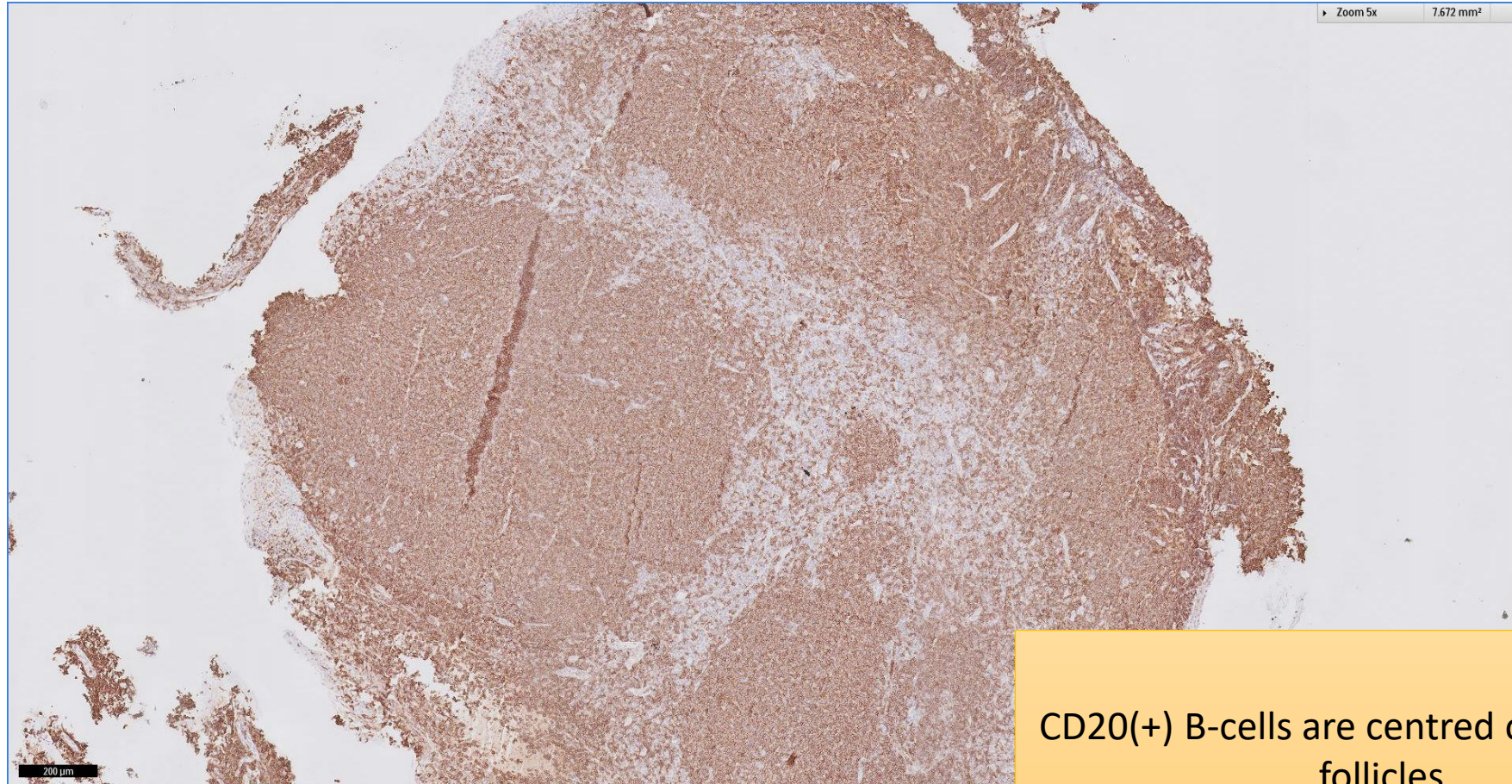
Dense vaguely nodular to diffuse infiltrate of small-to-medium sized lymphocytes underlying nasal epithelium

SGH CASE 33: 17RE157 POST-NASAL SPACE H&E

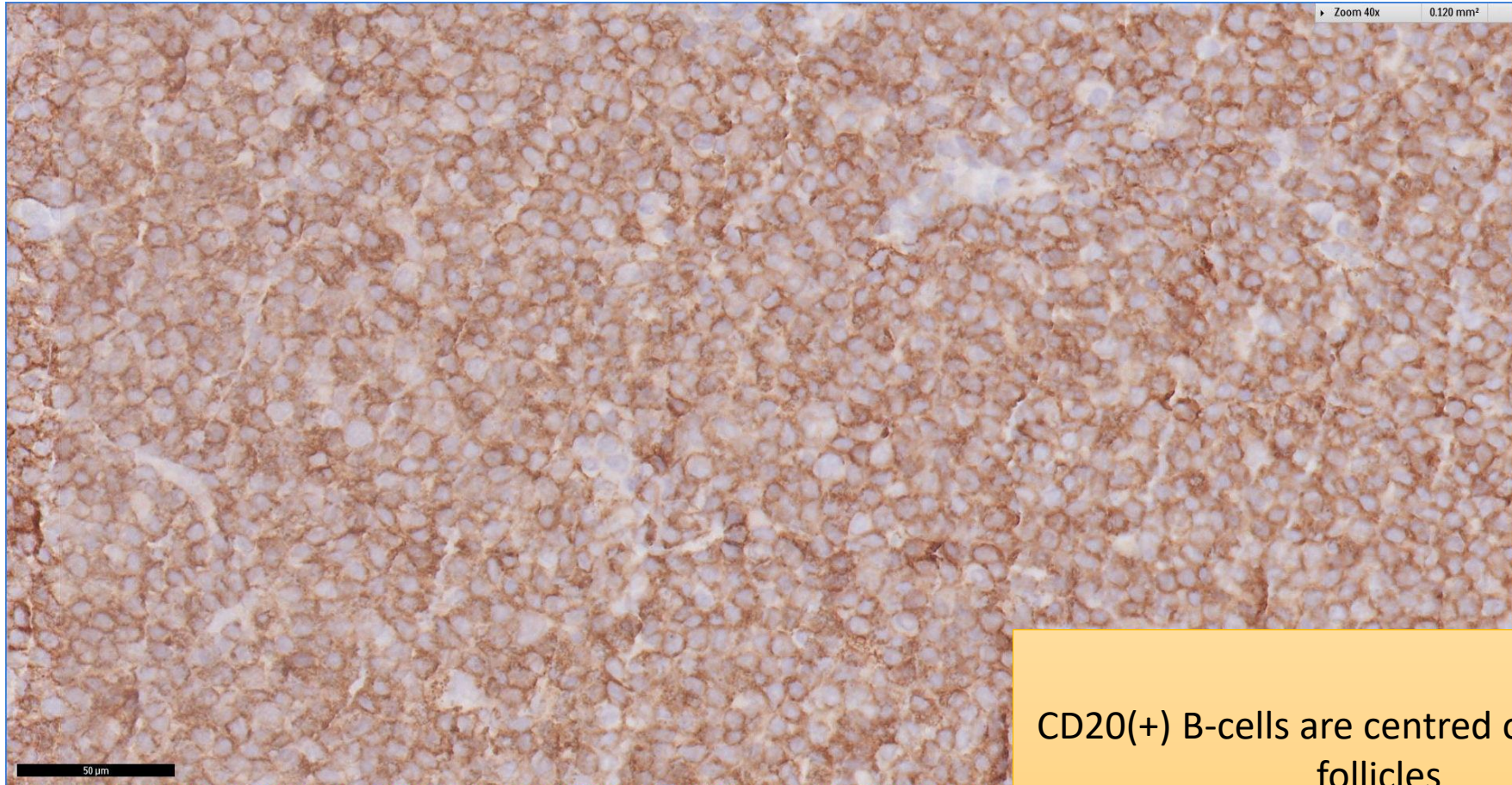


Dense vaguely nodular to diffuse infiltrate of small-to-medium sized lymphocytes underlying nasal epithelium

SGH CASE 33: 17RE157 POST-NASAL SPACE CD20



SGH CASE 33: 17RE157 POST-NASAL SPACE CD20



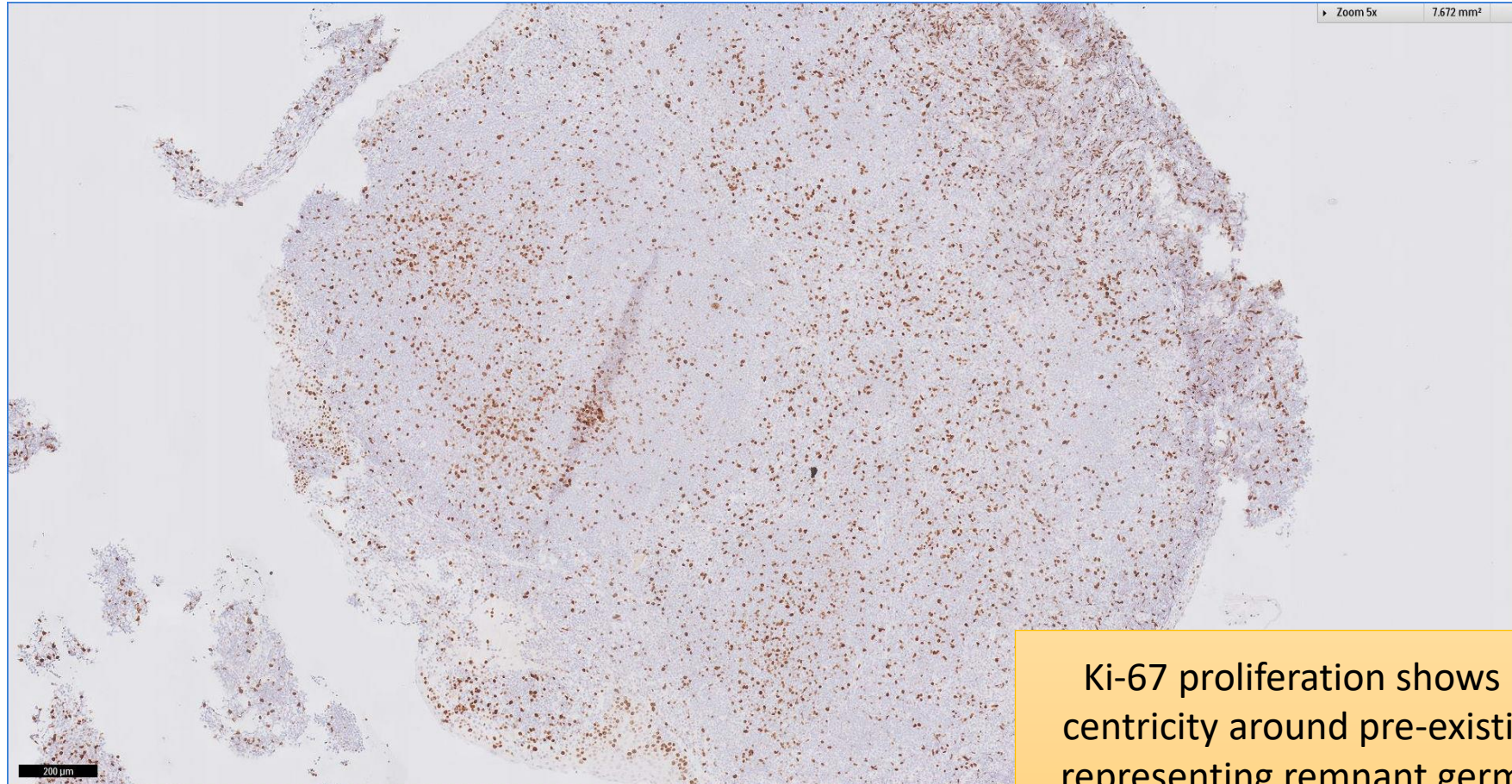
CD20(+) B-cells are centred on expanded follicles

SGH CASE 33: 17RE157 POST-NASAL SPACE CD21



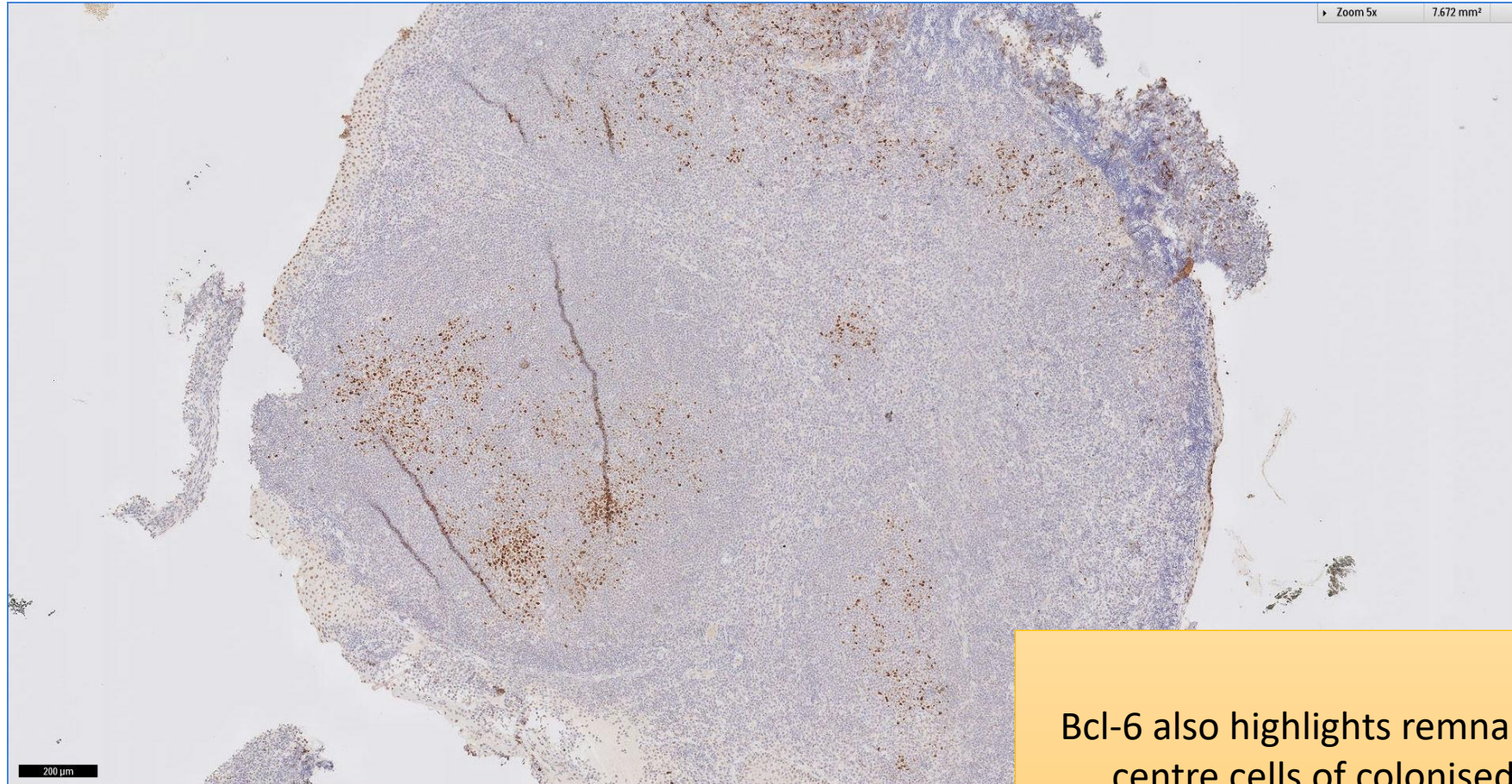
Follicular dendritic meshworks are expanded and frayed

SGH CASE 33: 17RE157 POST-NASAL SPACE KI67



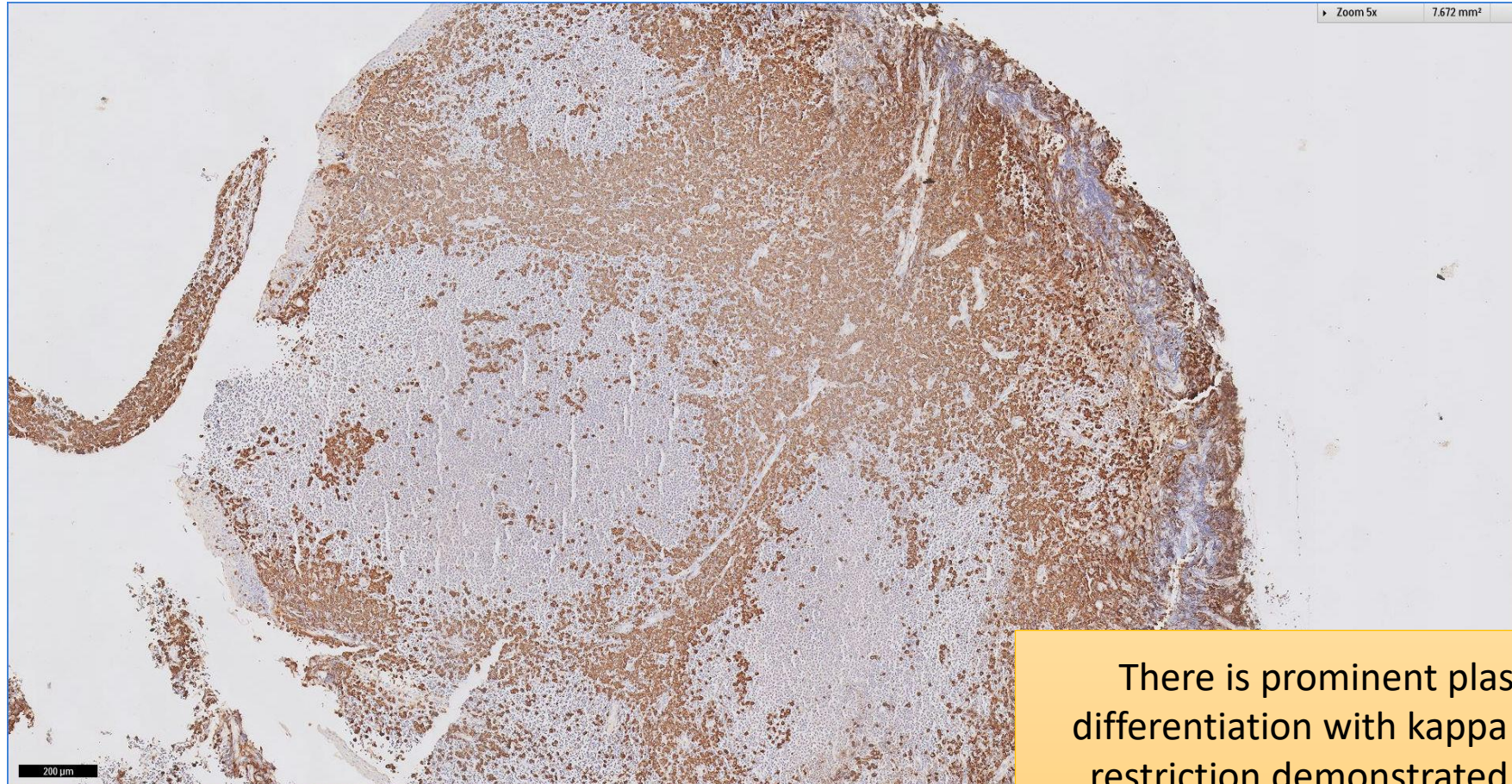
Ki-67 proliferation shows ill-defined centricity around pre-existing follicles, representing remnant germinal centre cells of colonised follicles

SGH CASE 33: 17RE157 POST-NASAL SPACE BCL6



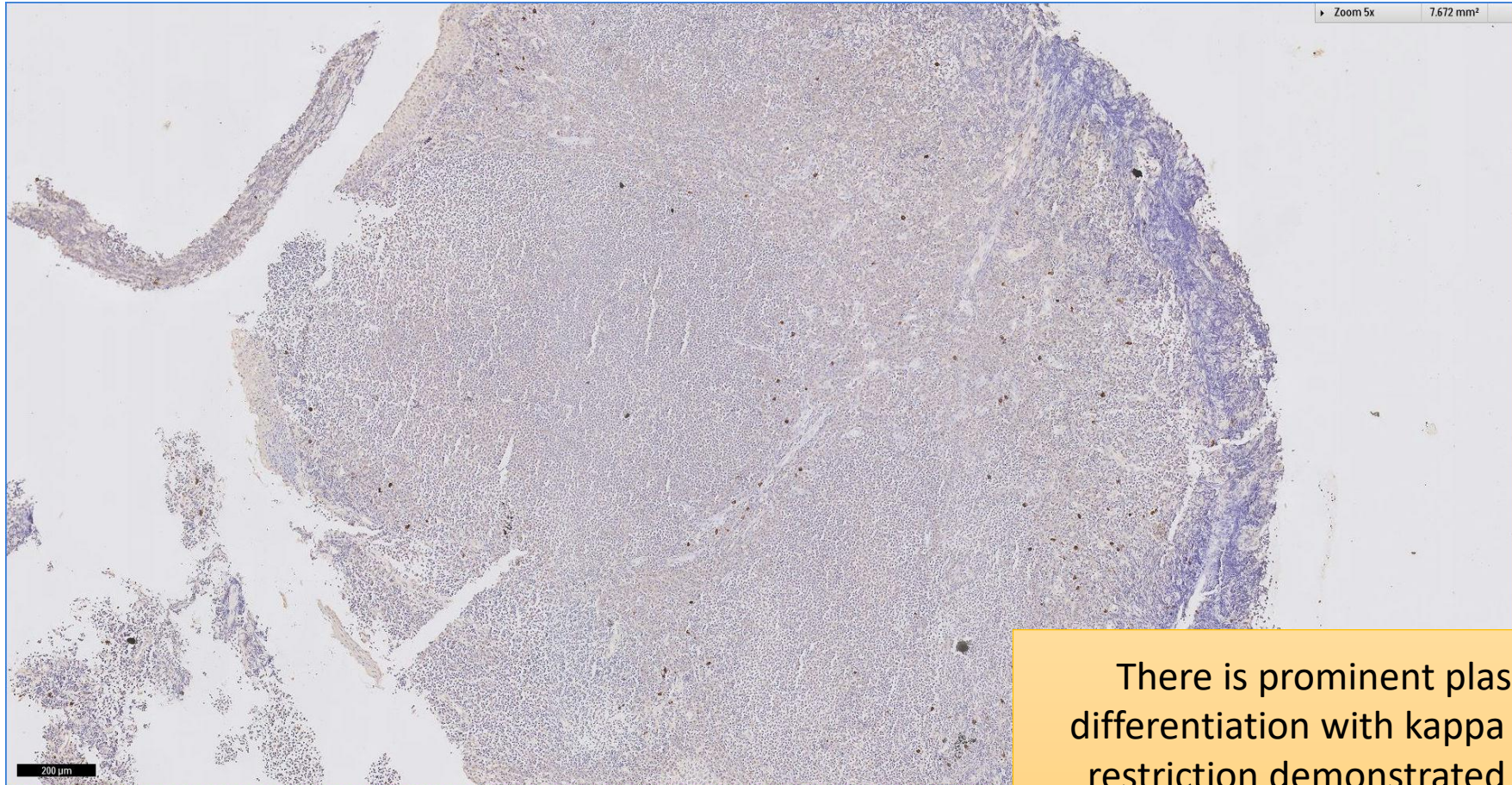
**Bcl-6 also highlights remnant germinal
centre cells of colonised follicles**

SGH CASE 33: 17RE157 POST-NASAL SPACE KAPPA-ISH



There is prominent plasmacytic differentiation with kappa light chain restriction demonstrated by in-situ hybridization

SGH CASE 33: 17RE157 POST-NASAL SPACE LAMBDA-ISH



There is prominent plasmacytic differentiation with kappa light chain restriction demonstrated by in-situ hybridization

SGH CASE 33: 17RE156 & RE157

- Diagnosis
 - Extranodal Marginal Zone Lymphoma of Mucosa-associated Lymphoid Tissue (EMZL-MALT) in conjunctiva and post-nasal space (one year apart)