

# SGH CASE 31: 17RE151

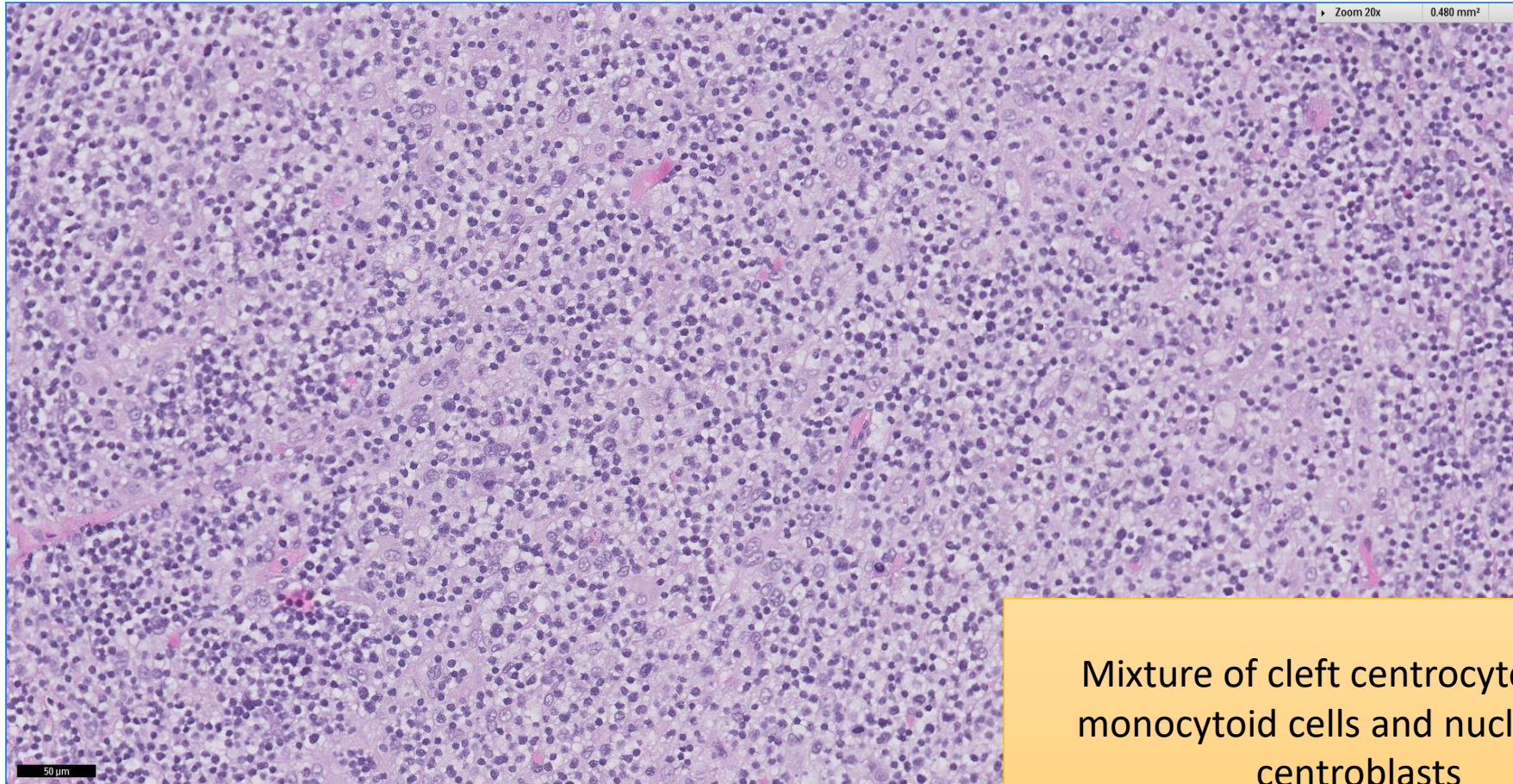
- Clinical History:
  - 60+ years old (late 60s), Male. Axillary lymphadenopathy.
- Specimen:
  - Left axillary lymph node excision biopsy

# SGH CASE 31: 17RE151 H&E



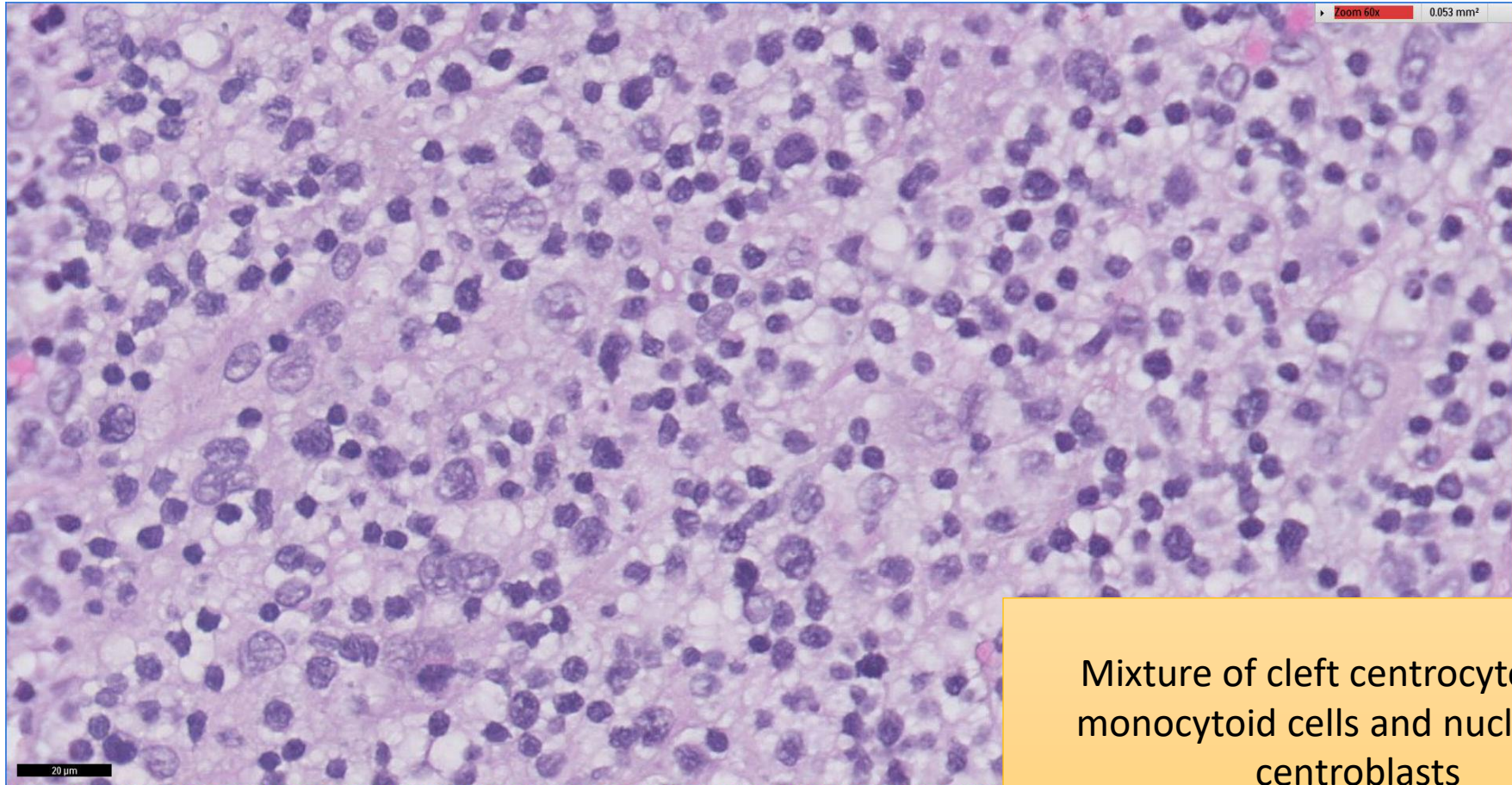
Crowded expansile follicles with  
attenuated mantle zone

# SGH CASE 31: 17RE151 H&E



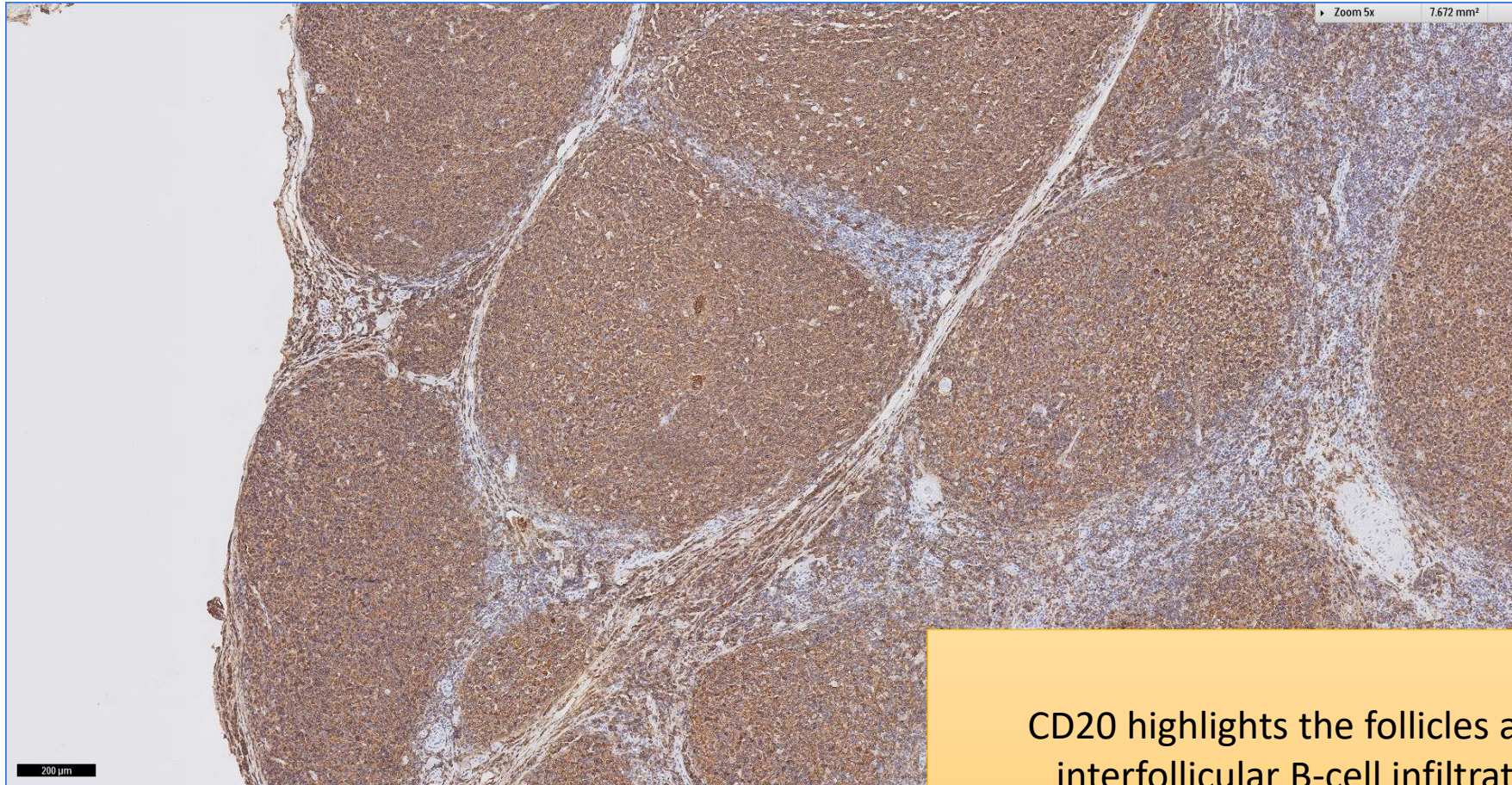
Mixture of cleft centrocytes, pale monocytoïd cells and nucleolated centroblasts

# SGH CASE 31: 17RE151 H&E



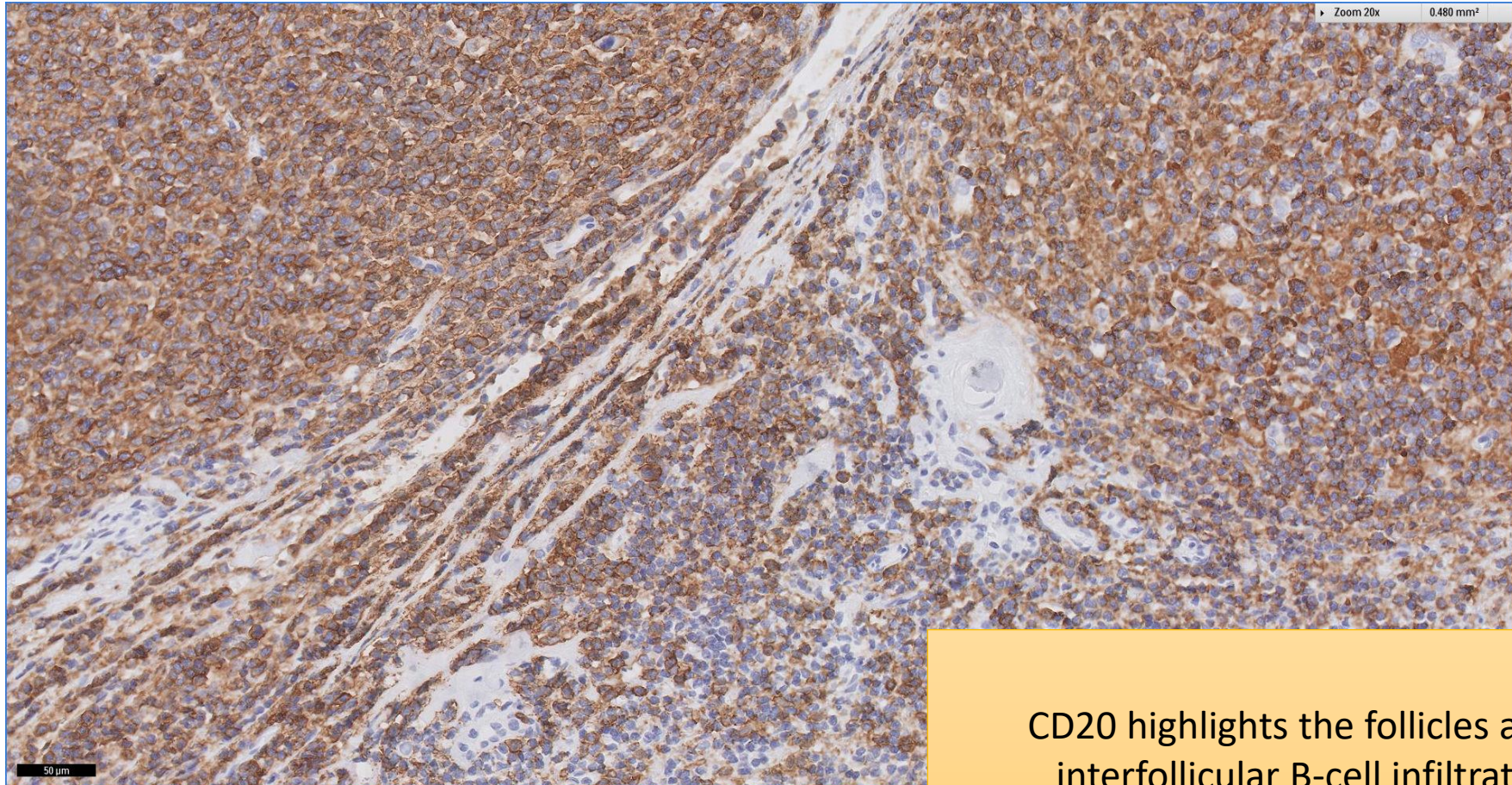
Mixture of cleft centrocytes, pale monocytonoid cells and nucleolated centroblasts

# SGH CASE 31: 17RE151 CD20



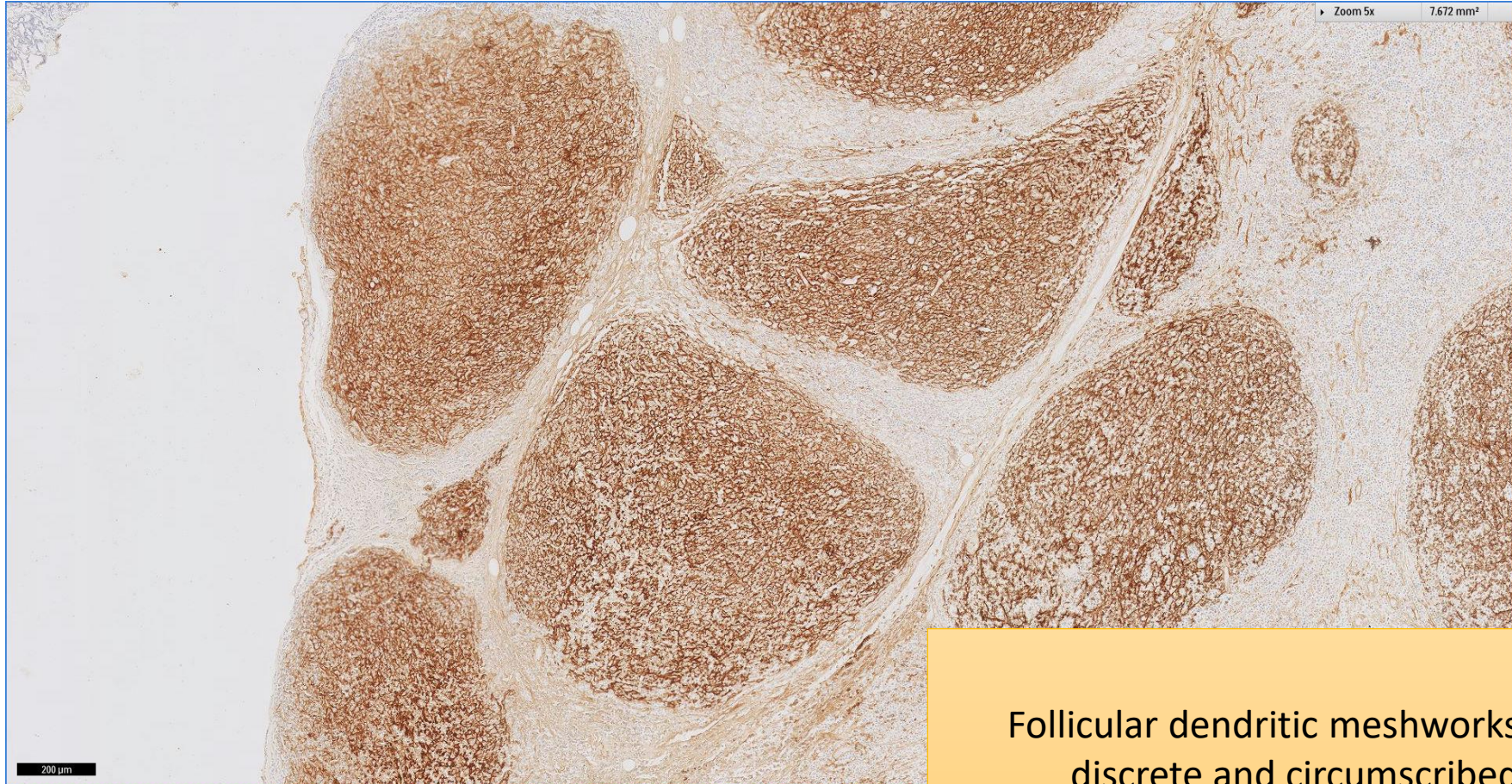
CD20 highlights the follicles and  
interfollicular B-cell infiltrate

# SGH CASE 31: 17RE151 CD20



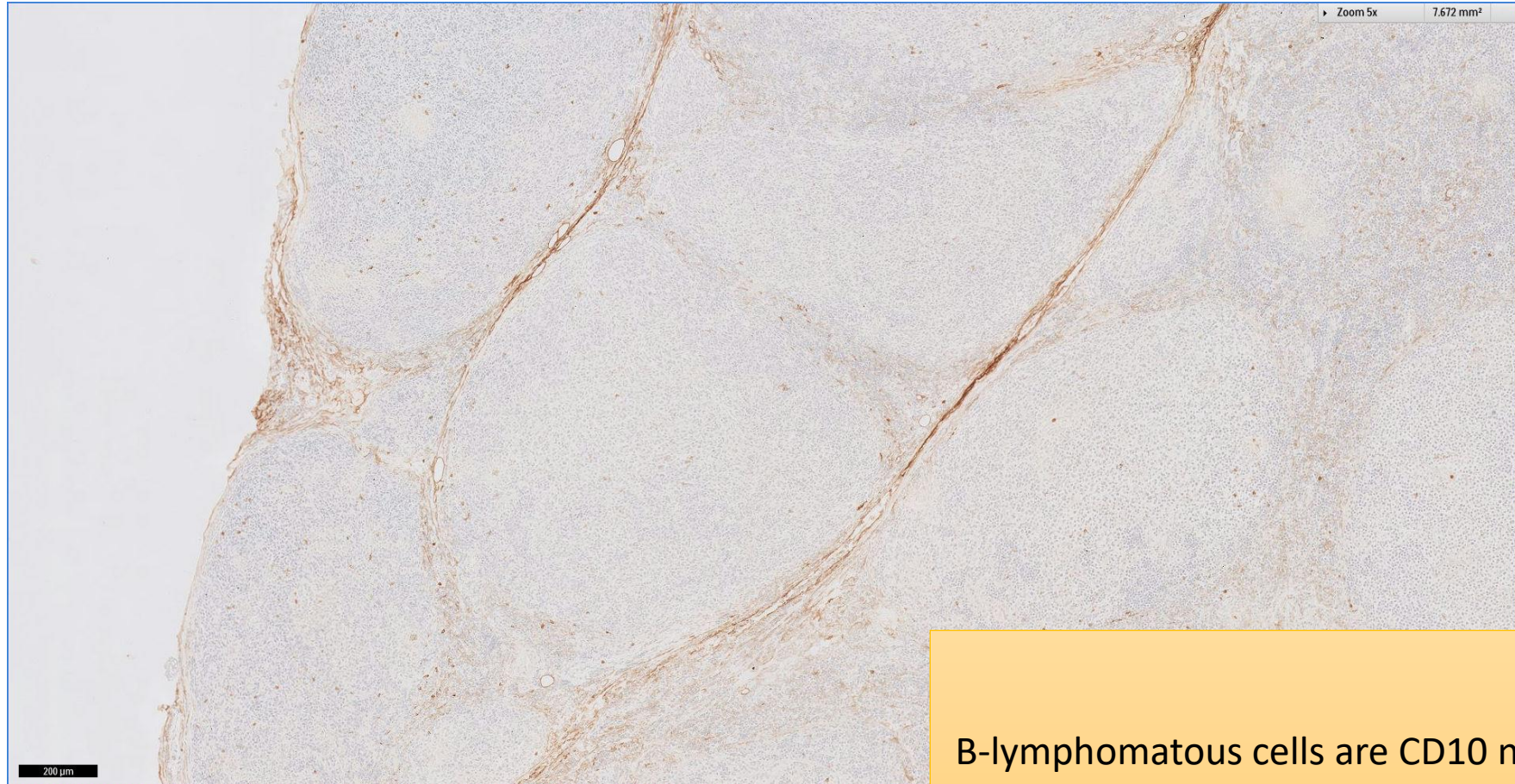
CD20 highlights the follicles and interfollicular B-cell infiltrate

# SGH CASE 31: 17RE151 CD21



Follicular dendritic meshworks are discrete and circumscribed

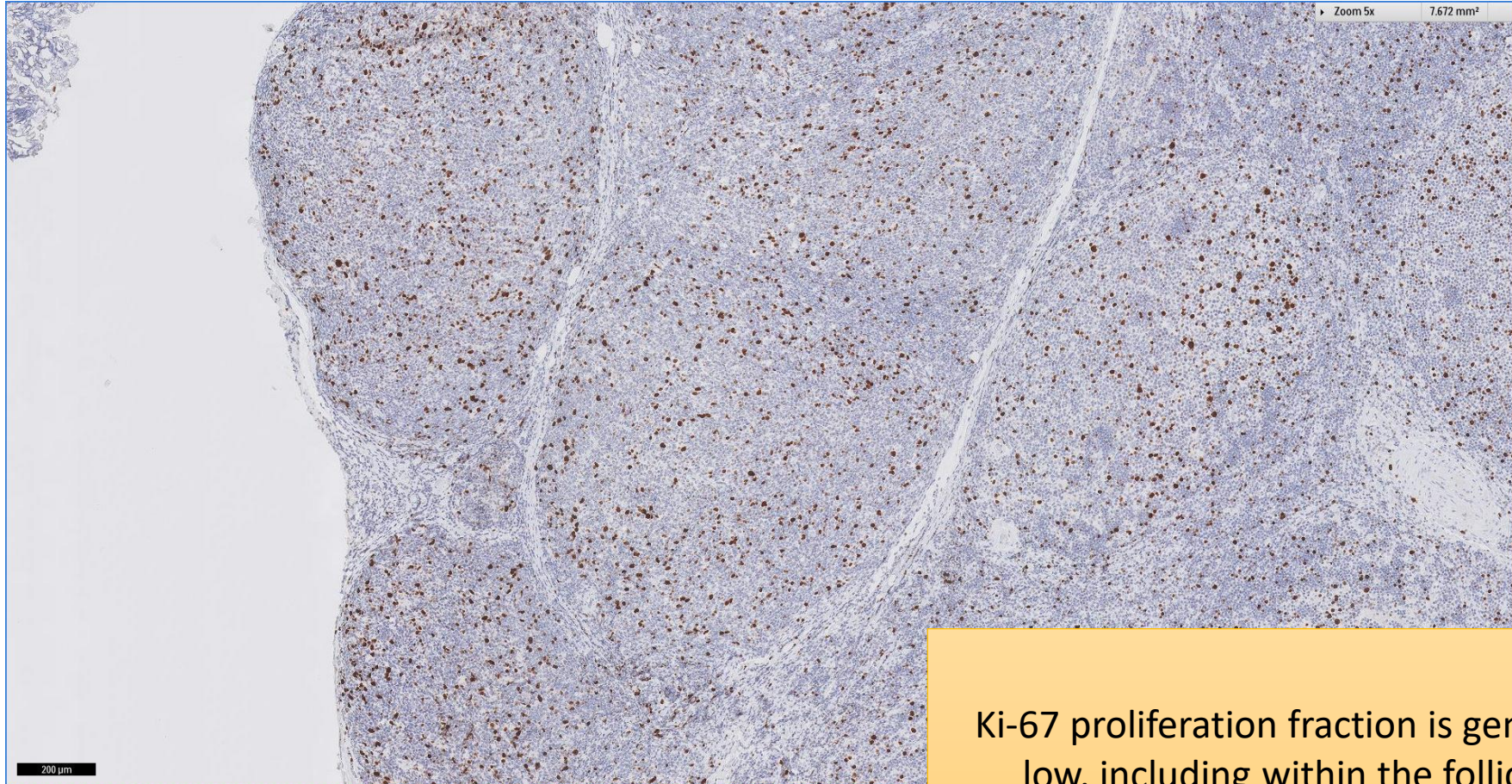
# SGH CASE 31: 17RE151 CD10



**B-lymphomatous cells are CD10 negative**

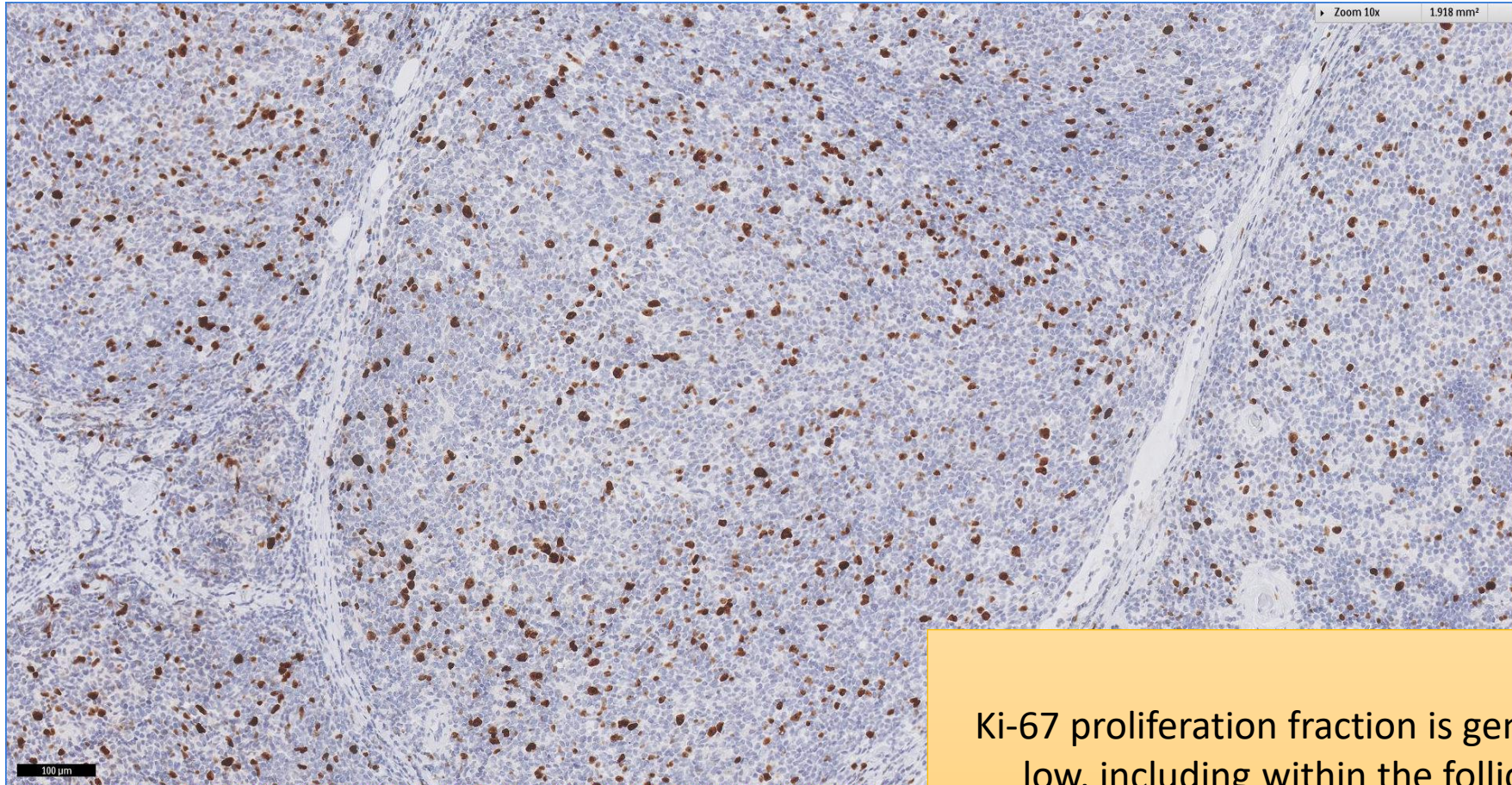


# SGH CASE 31: 17RE151 KI67



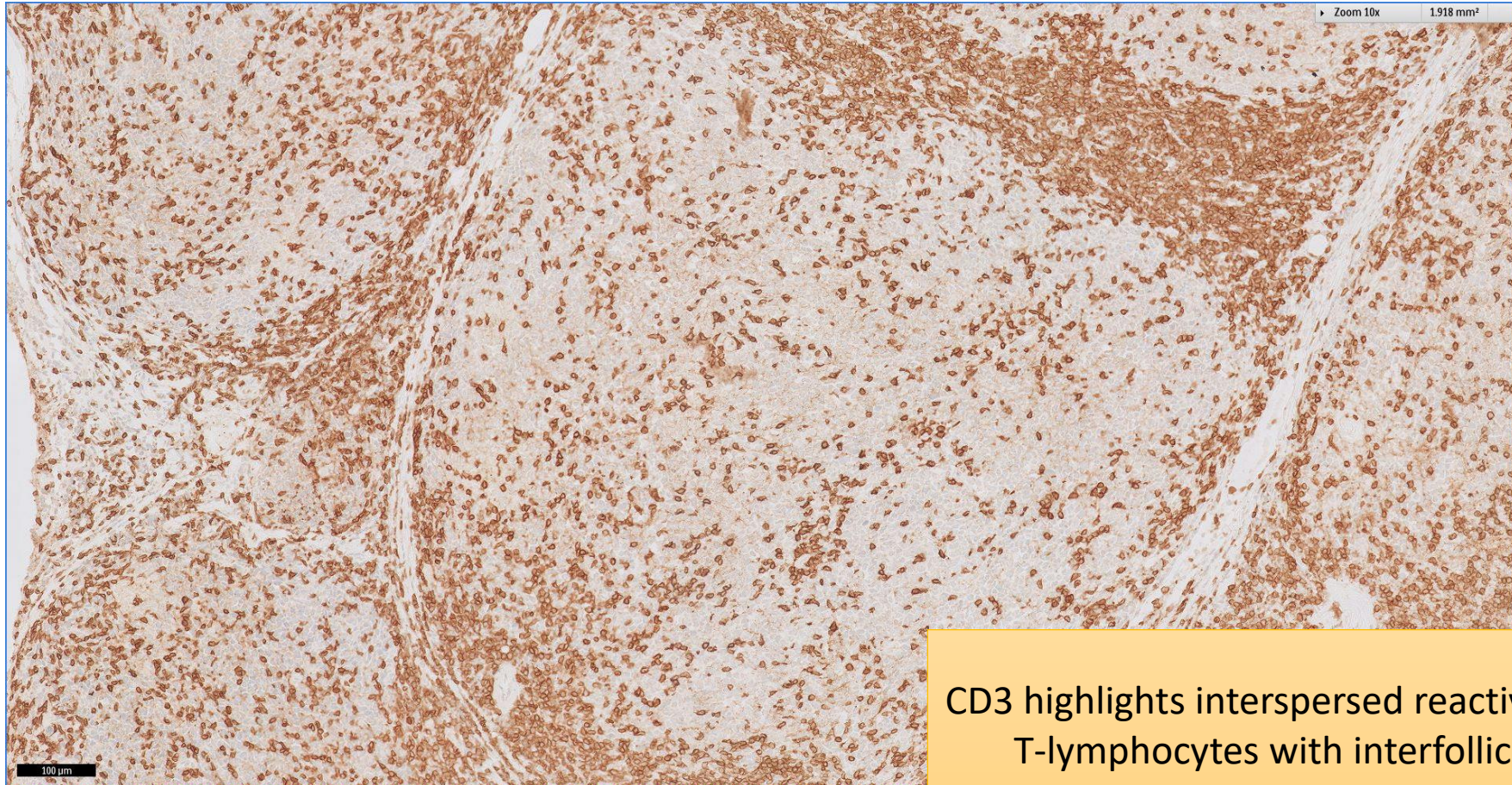
Ki-67 proliferation fraction is generally low, including within the follicles

# SGH CASE 31: 17RE151 KI67



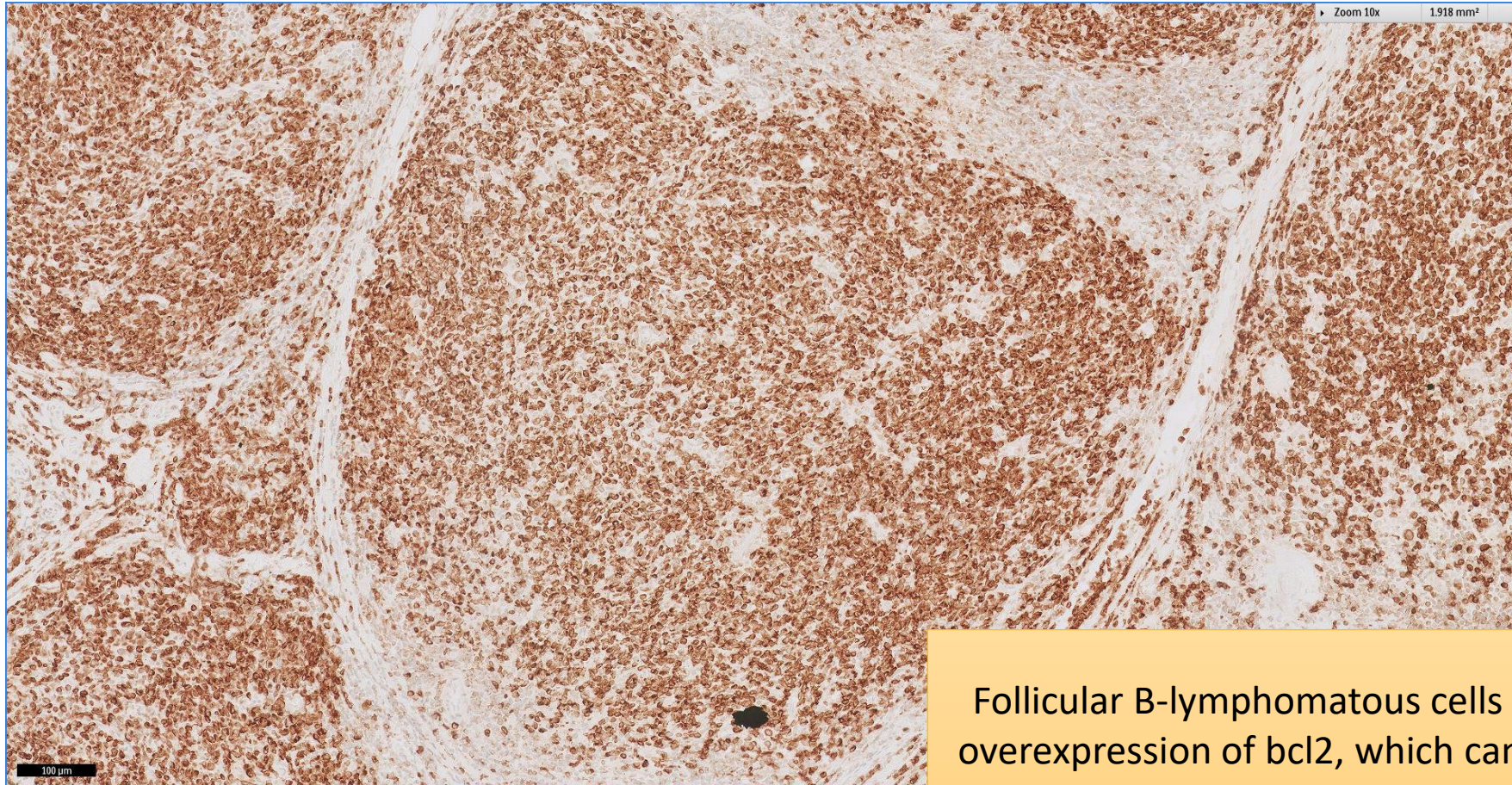
Ki-67 proliferation fraction is generally low, including within the follicles

# SGH CASE 31: 17RE151 CD3



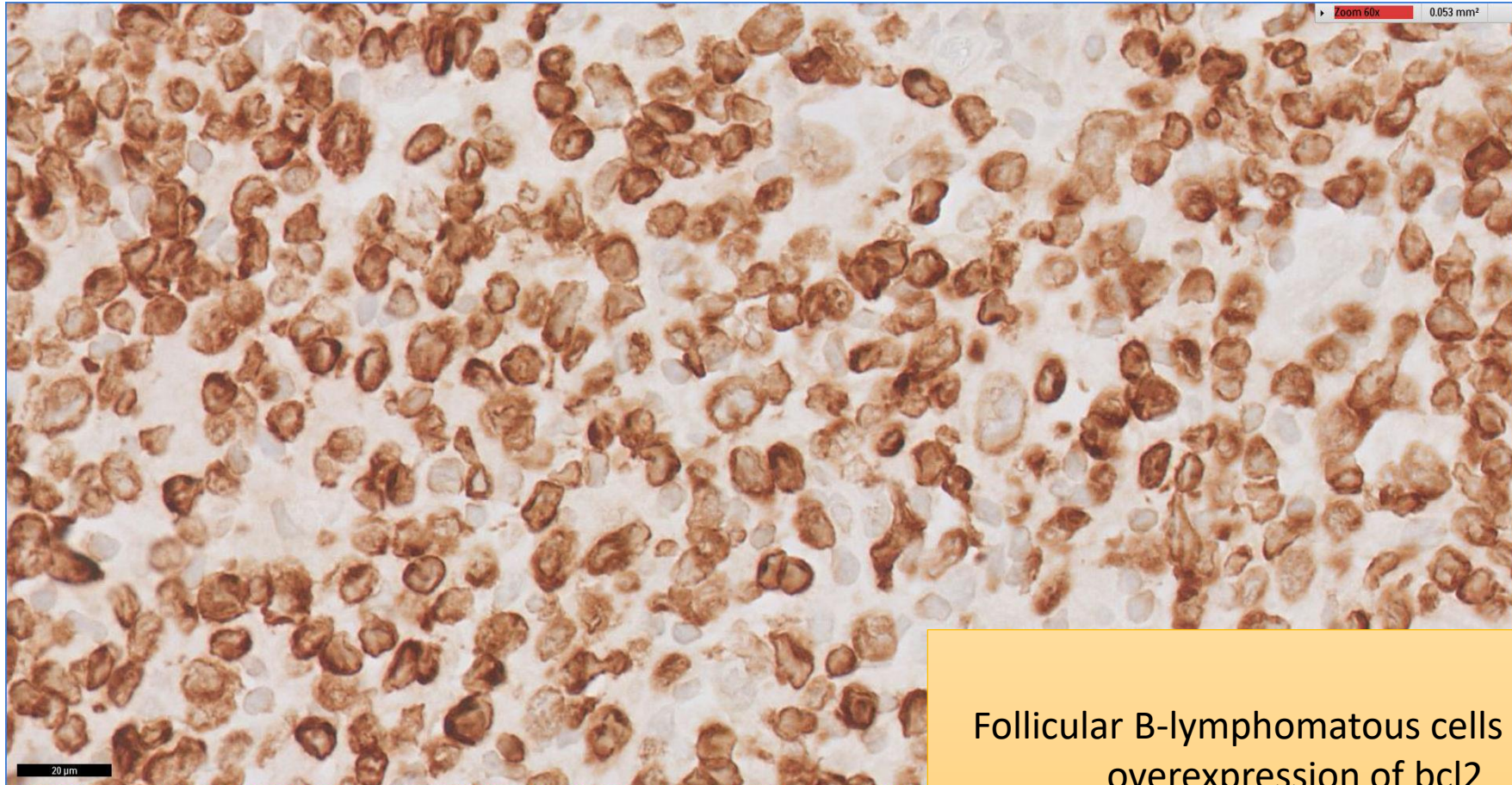
CD3 highlights interspersed reactive small T-lymphocytes with interfollicular accentuation

# SGH CASE 31: 17RE151 BCL2



Follicular B-lymphomatous cells shows overexpression of bcl2, which cannot be accounted for by T-lymphocytes

# SGH CASE 31: 17RE151 BCL2



Follicular B-lymphomatous cells shows overexpression of bcl2

# SGH CASE 31: 17RE151

- Diagnosis
  - Follicular Lymphoma, CD10-negative