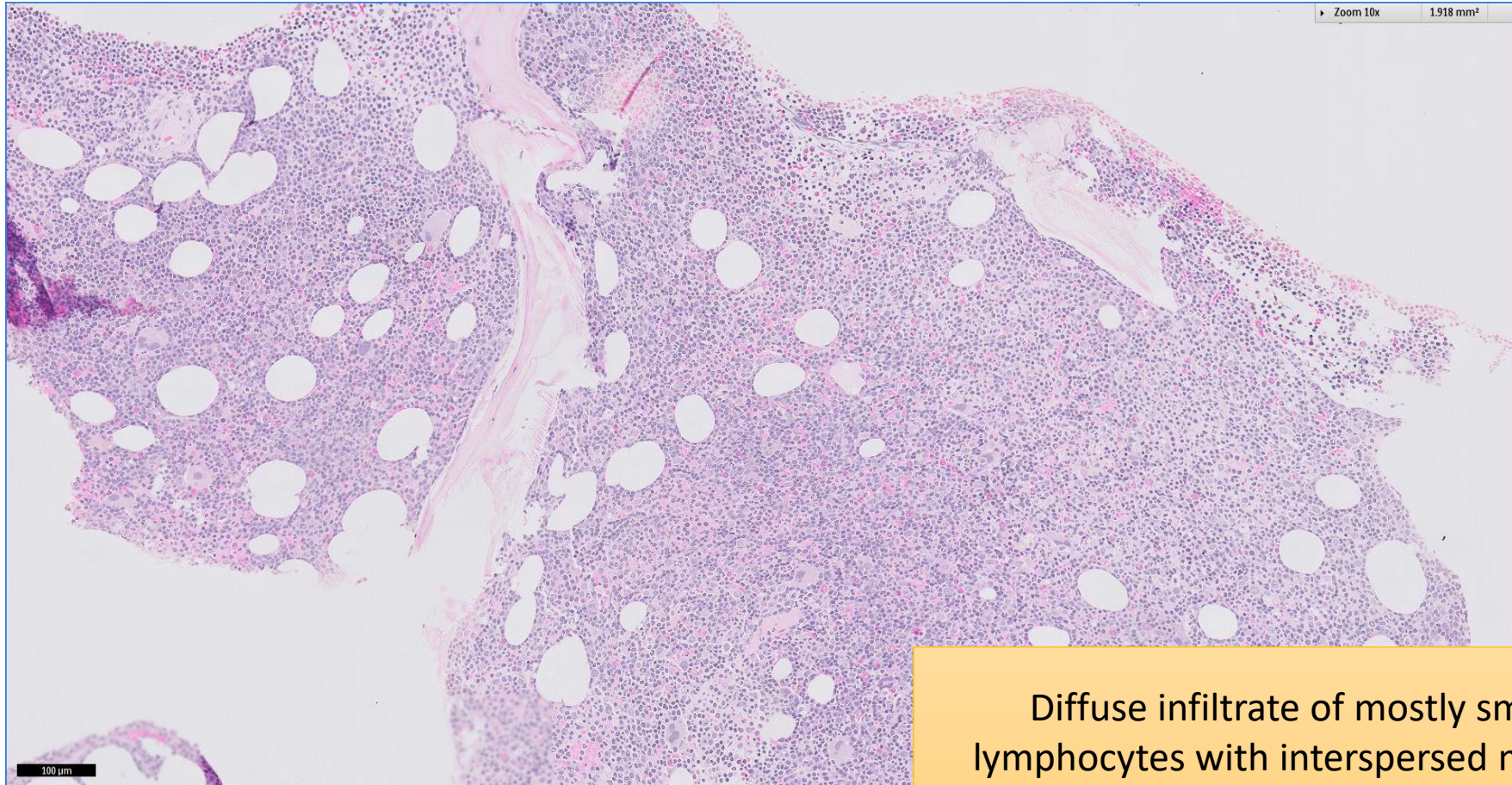


SGH CASE 29: 17RE148

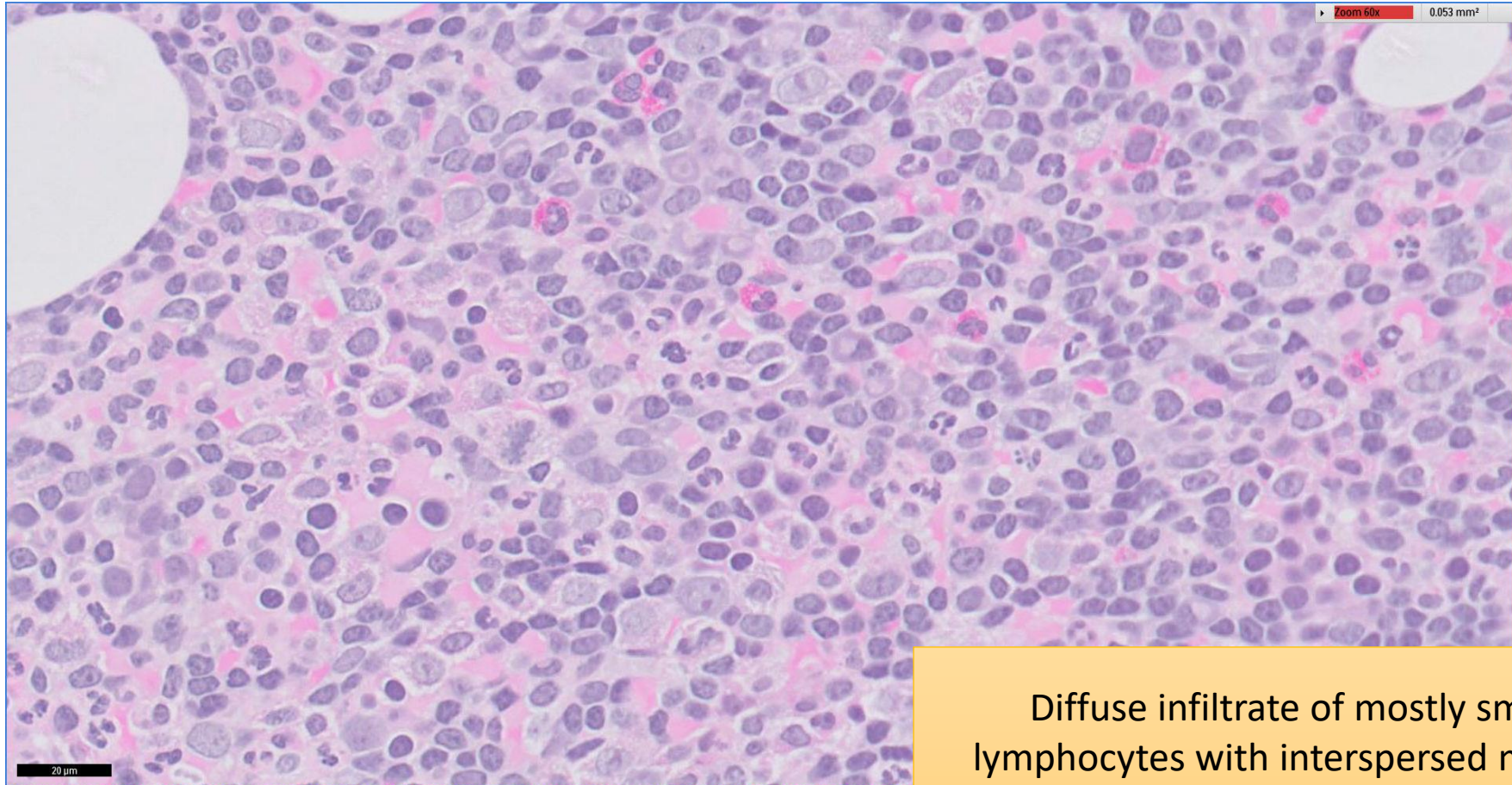
- Clinical History:
 - 60 years old, Female. Raised serum paraprotein (IgM, IgG, Kappa)
- Specimen:
 - Bone marrow trephine biopsy

SGH CASE 29: 17RE148 H&E



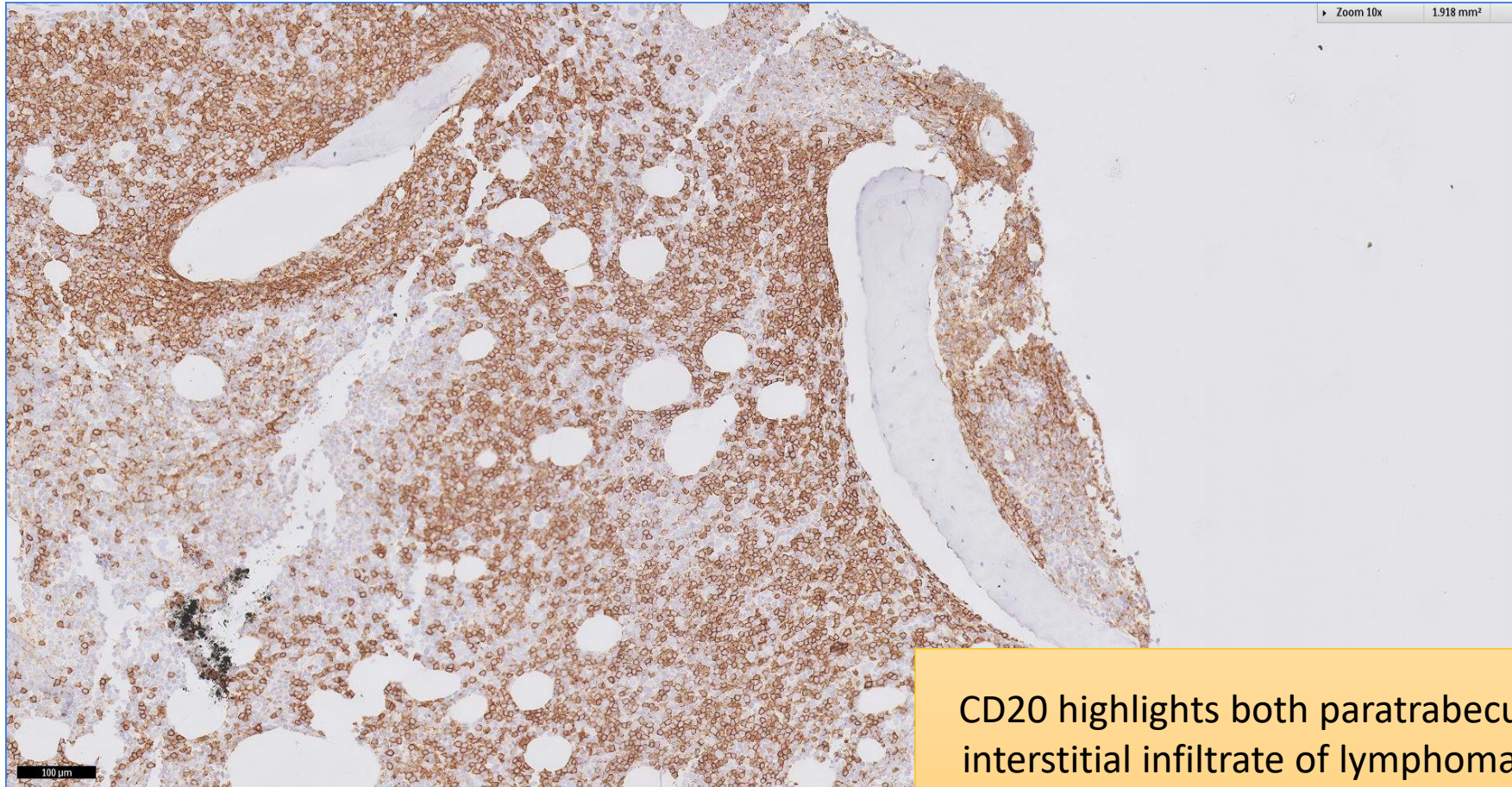
Diffuse infiltrate of mostly small lymphocytes with interspersed mature plasma cells

SGH CASE 29: 17RE148 H&E



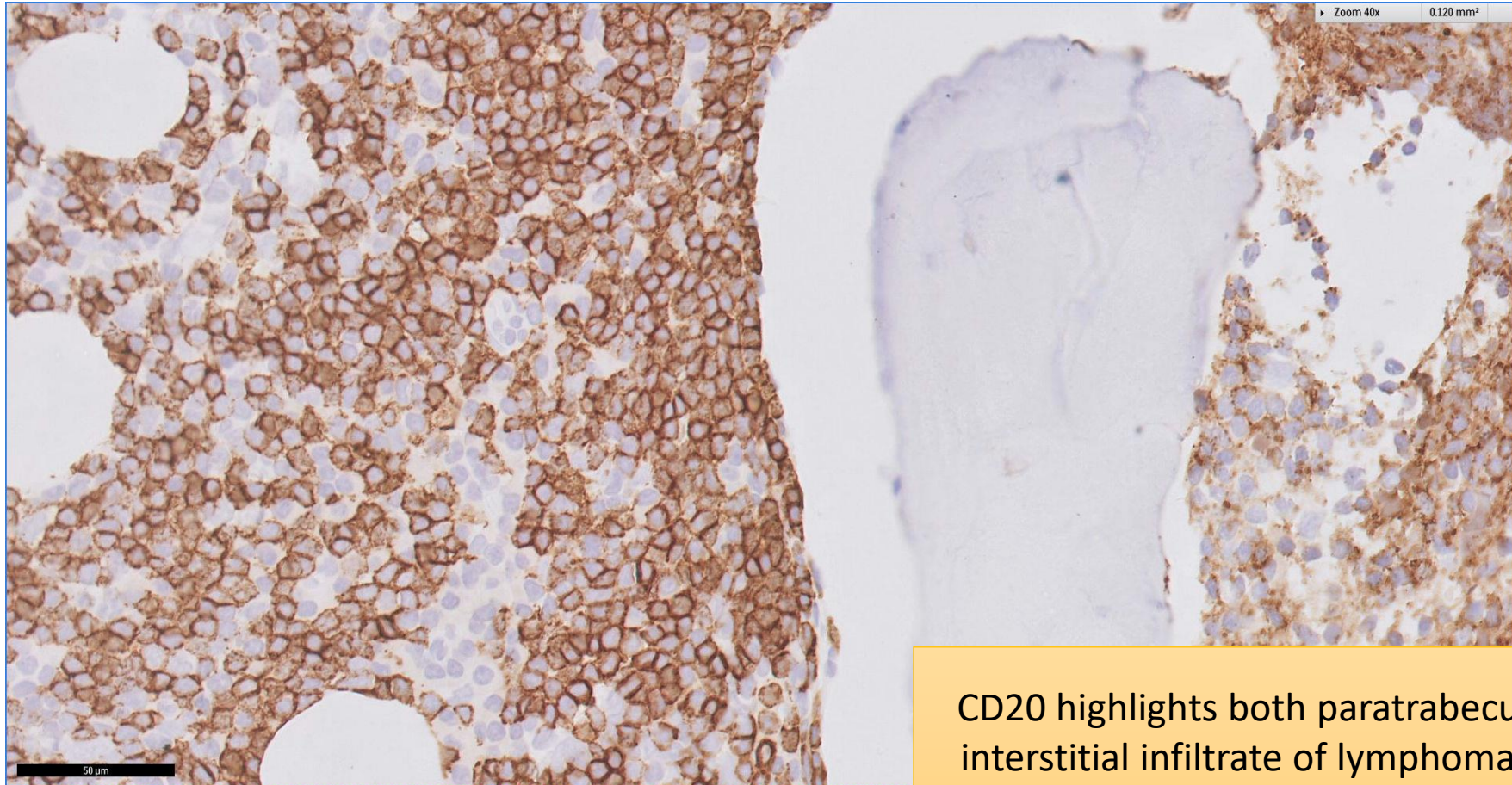
Diffuse infiltrate of mostly small lymphocytes with interspersed mature plasma cells

SGH CASE 29: 17RE148 CD20



CD20 highlights both paratrabeular and interstitial infiltrate of lymphomatous B-cells

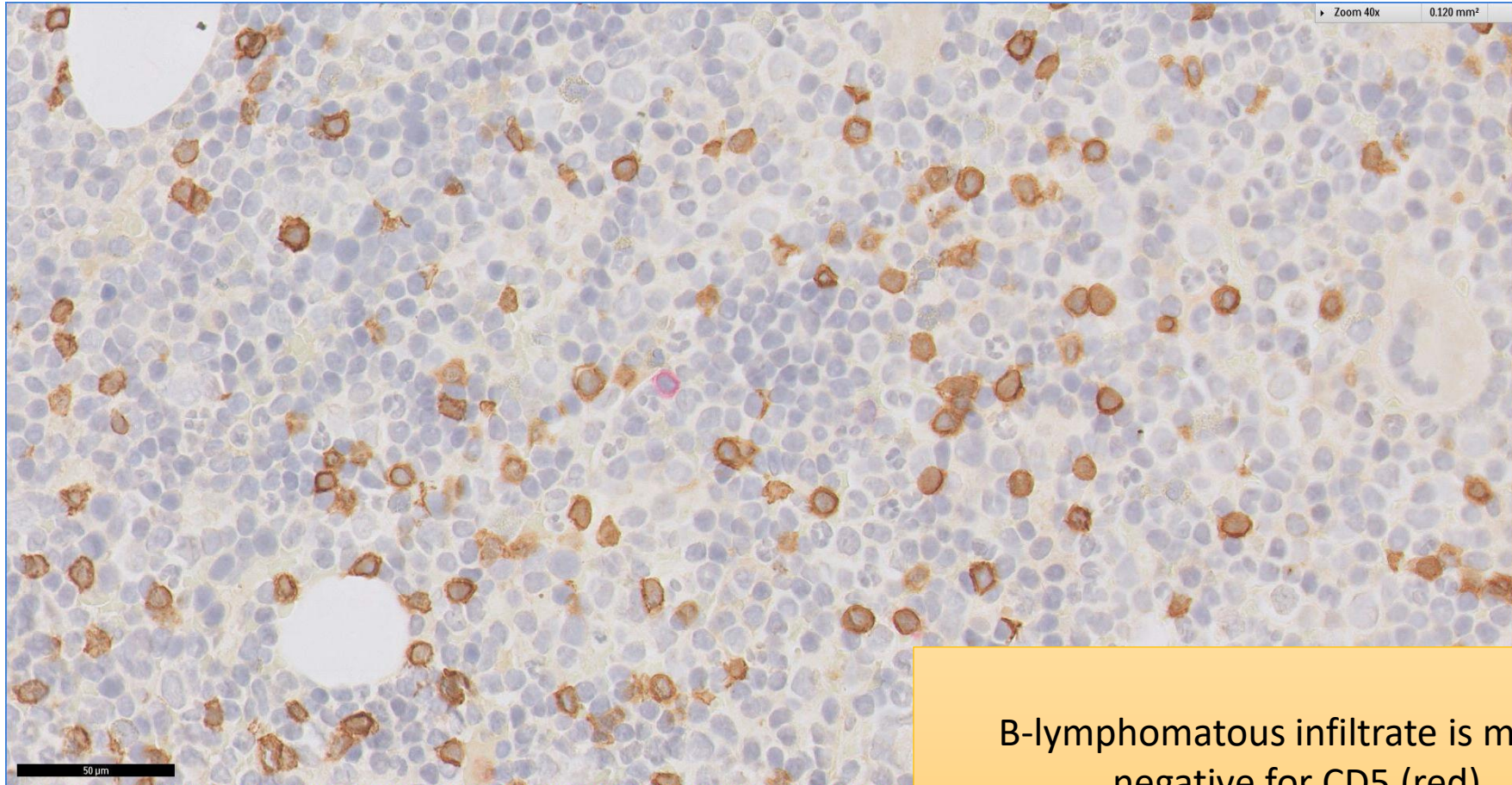
SGH CASE 29: 17RE148 CD20



CD20 highlights both paratrabeular and interstitial infiltrate of lymphomatous B-cells

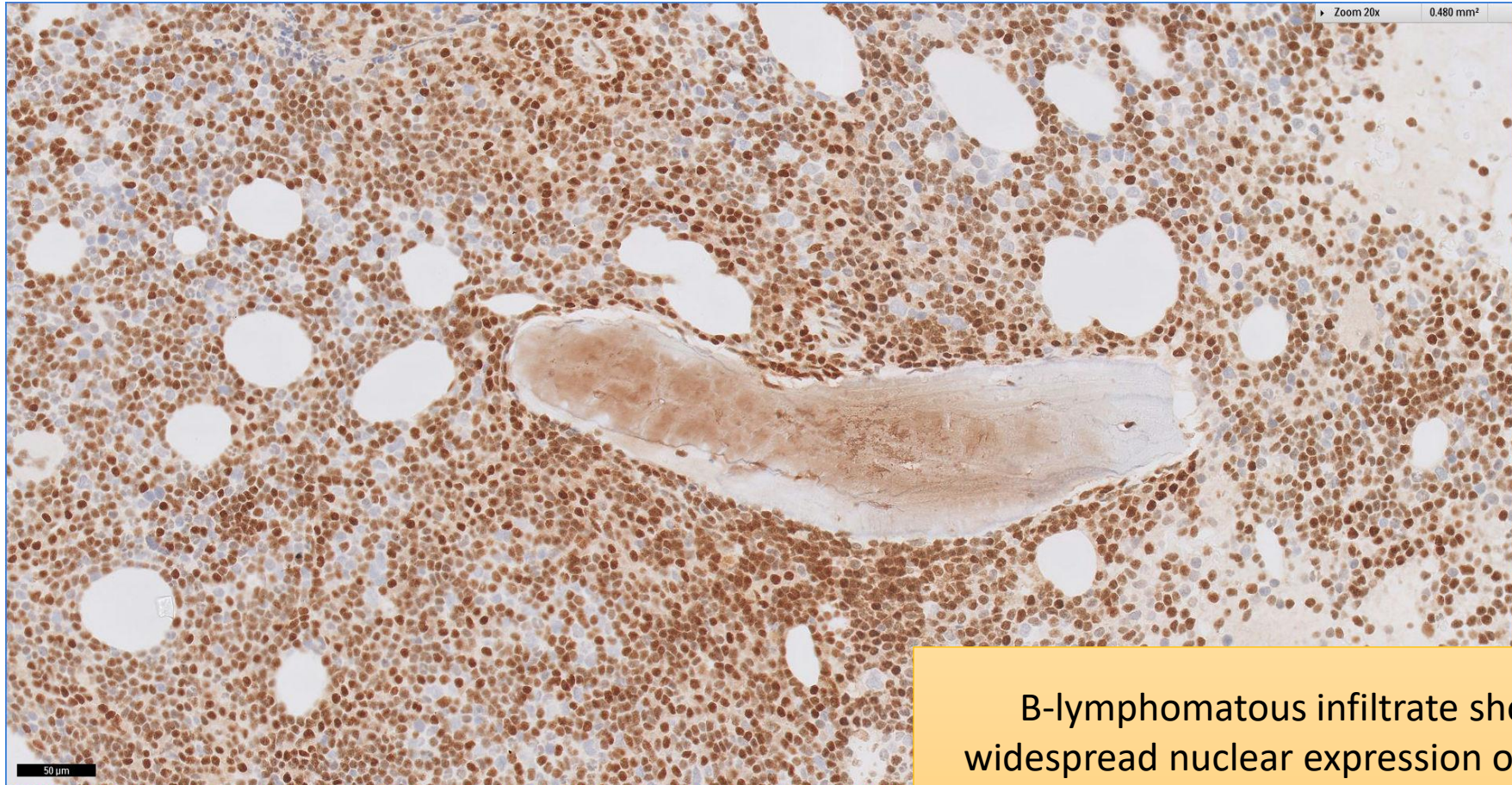
SGH CASE 29: 17RE148

CD5(RED) CD3(BROWN)



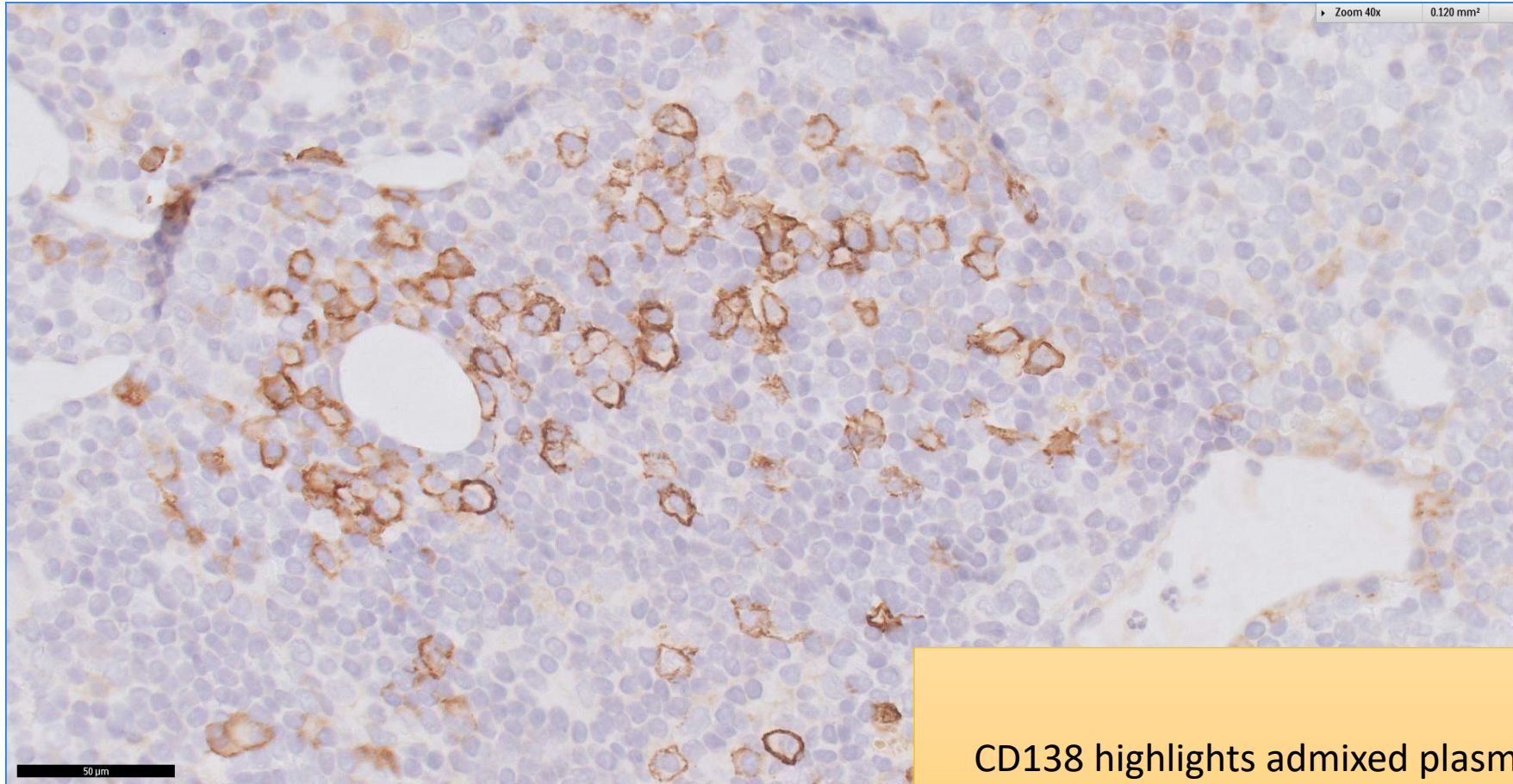
B-lymphomatous infiltrate is mostly negative for CD5 (red)

SGH CASE 29: 17RE148 P27



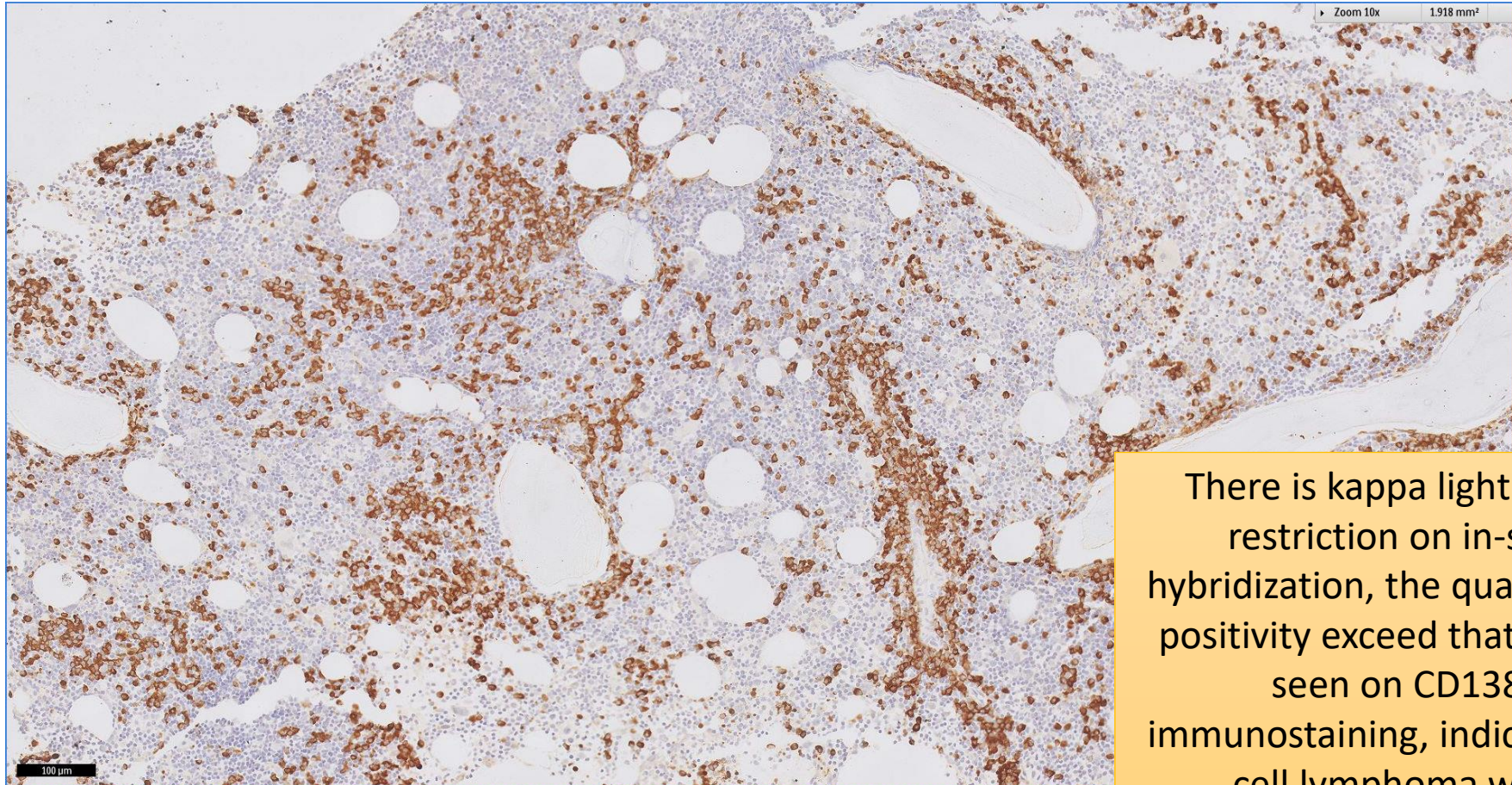
B-lymphomatous infiltrate shows widespread nuclear expression of cyclin dependent kinase inhibitor p27

SGH CASE 29: 17RE148 CD138



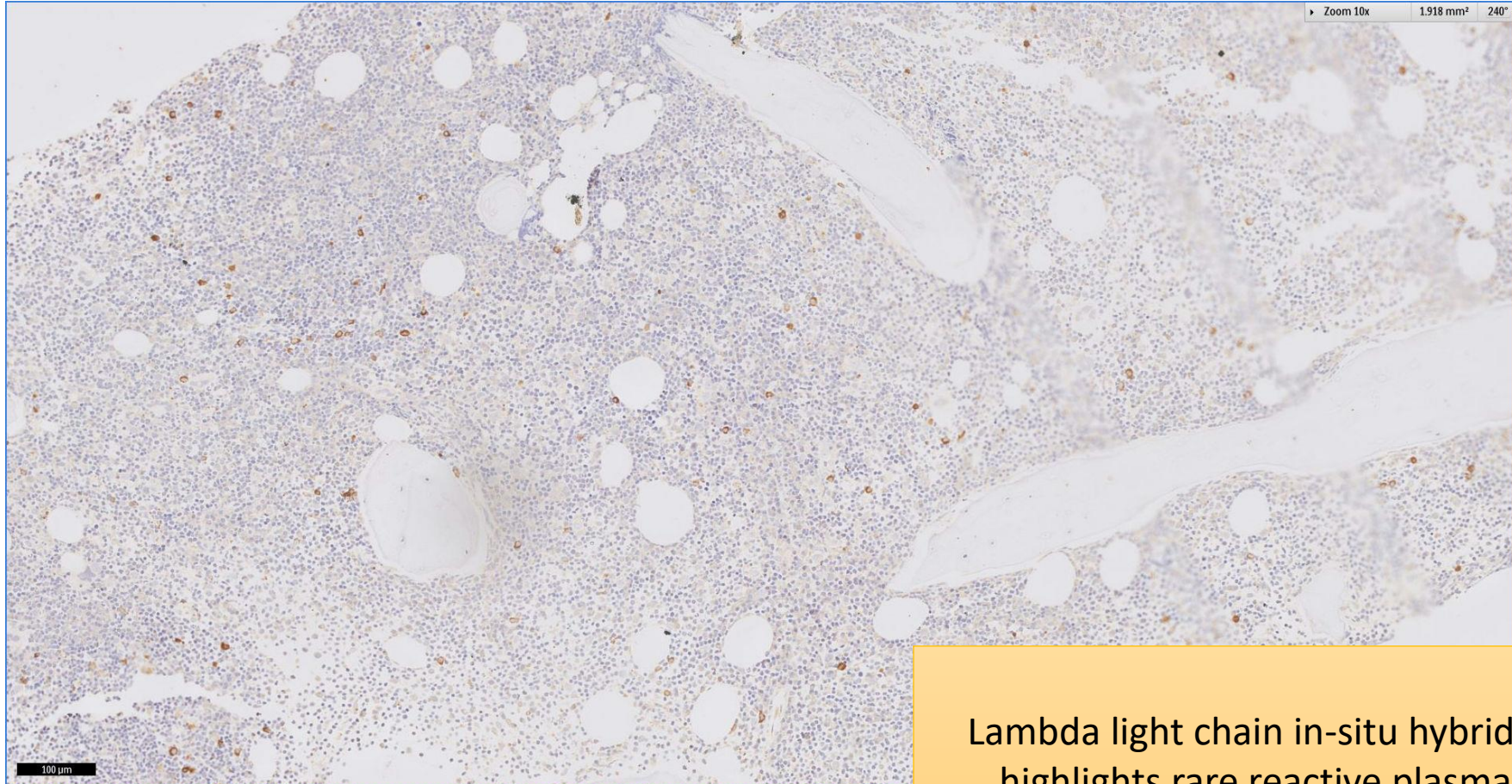
CD138 highlights admixed plasma cells

SGH CASE 29: 17RE148 KAPPA-ISH



There is kappa light chain restriction on in-situ hybridization, the quantum of positivity exceed that can be seen on CD138 immunostaining, indicating B-cell lymphoma with plasmacytic differentiation

SGH CASE 29: 17RE148 LAMBDA-ISH



Lambda light chain in-situ hybridization
highlights rare reactive plasma cells

SGH CASE 29: 17RE148

- Diagnosis
 - Lymphoplasmacytic Lymphoma
- Lymphomatous infiltrate shows low cell proliferation fraction (Ki-67 immunostaining) and is negative for cyclin D1, CD10 and CD123.