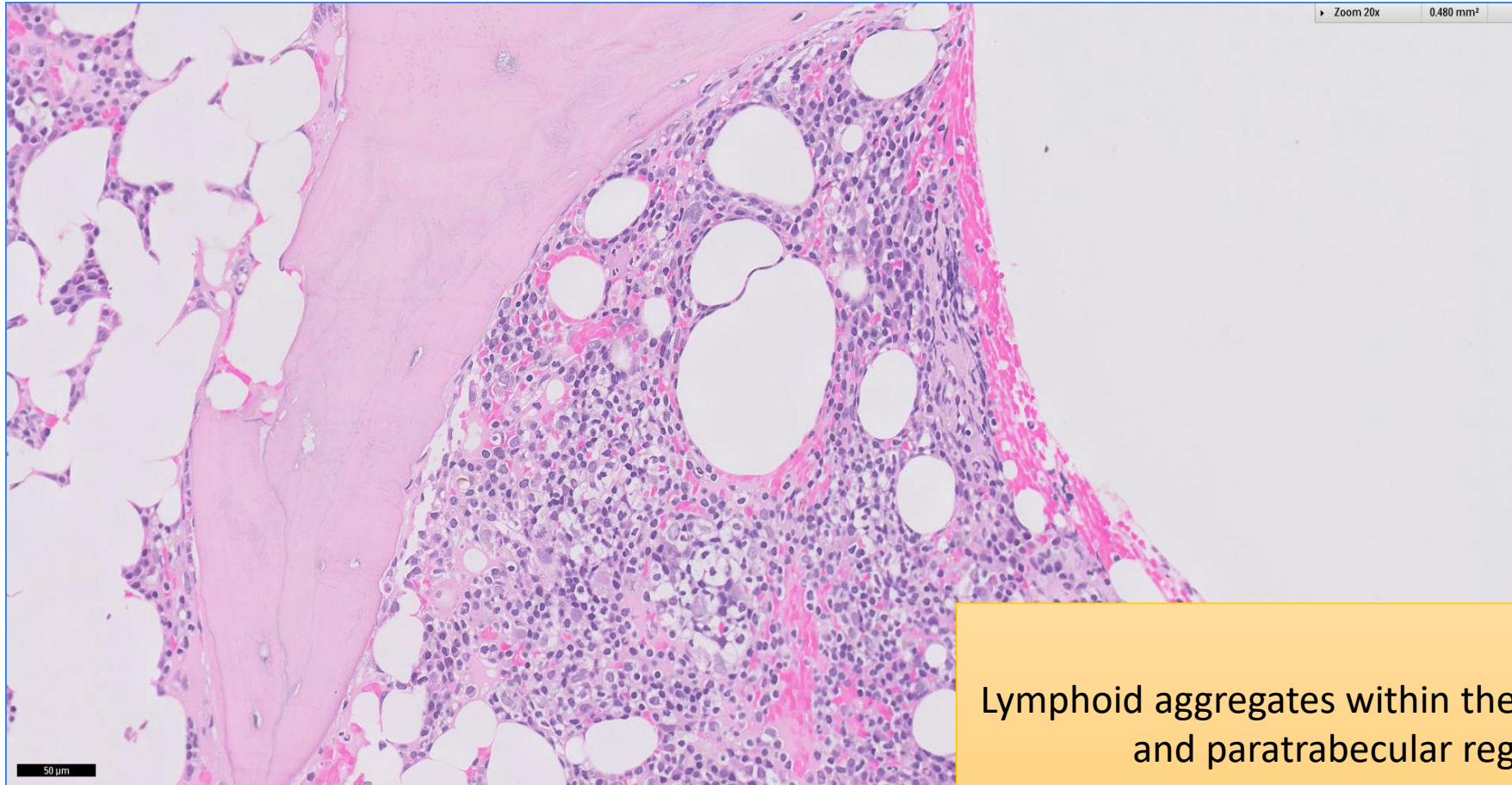


SGH CASE 28: 17RE147

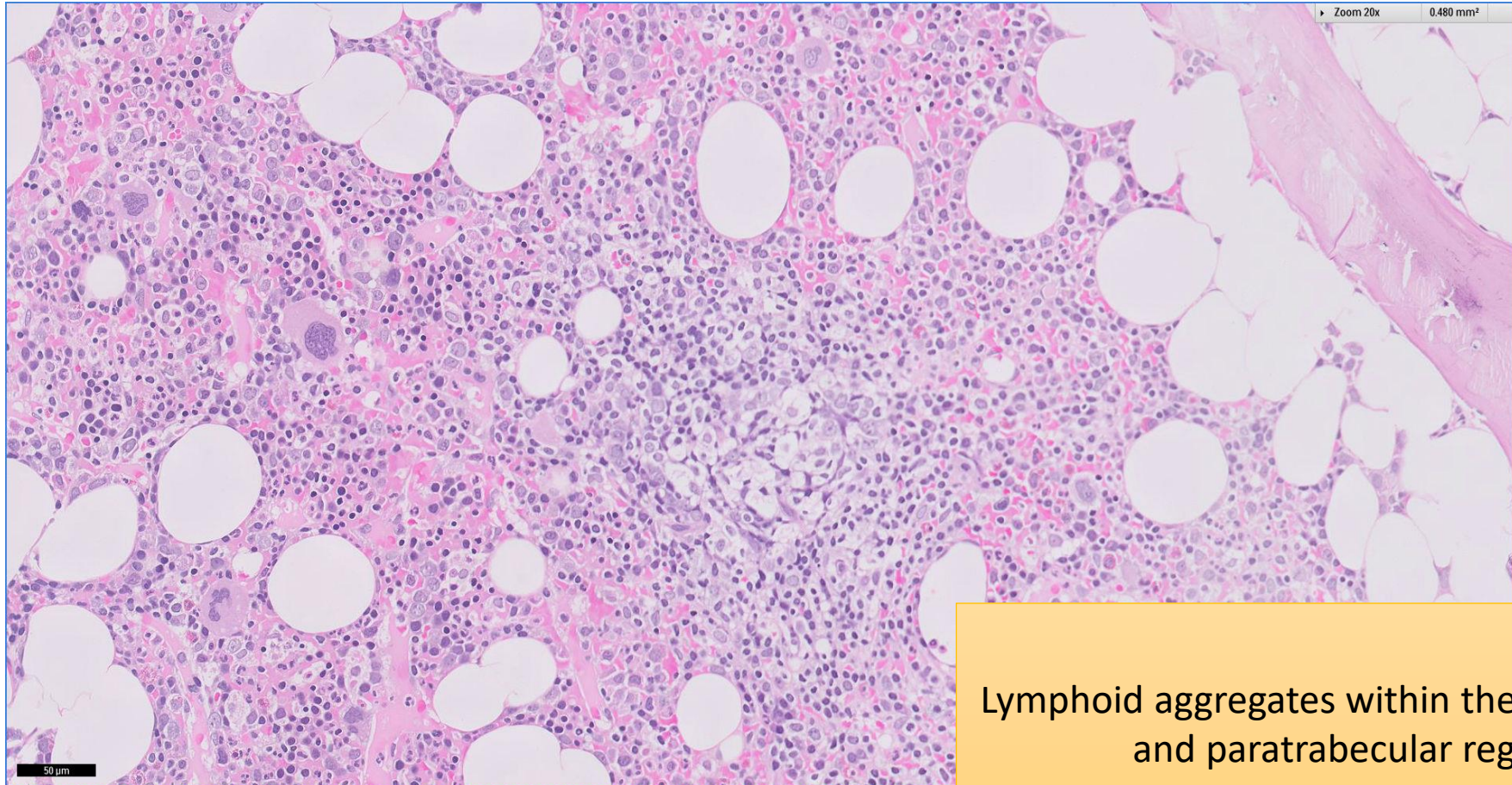
- Clinical History:
 - 50+ years old (late 50s), Male. Raised serum paraprotein (IgM Kappa).
Absence of splenic and nodal involvement on imaging.
- Specimen:
 - Bone marrow trephine biopsy

SGH CASE 28: 17RE147 H&E



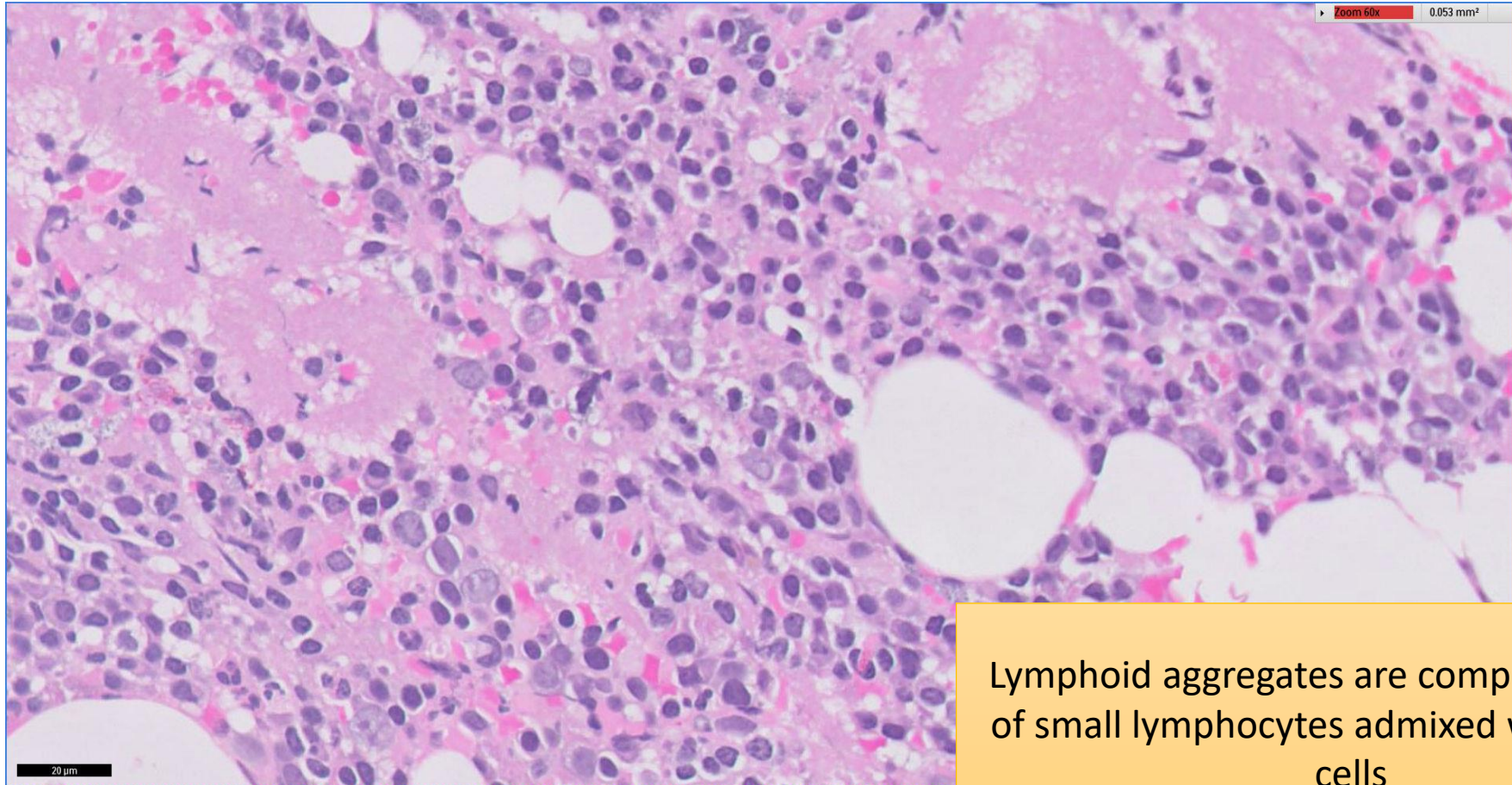
Lymphoid aggregates within the interstitium and paratrabeular region

SGH CASE 28: 17RE147 H&E



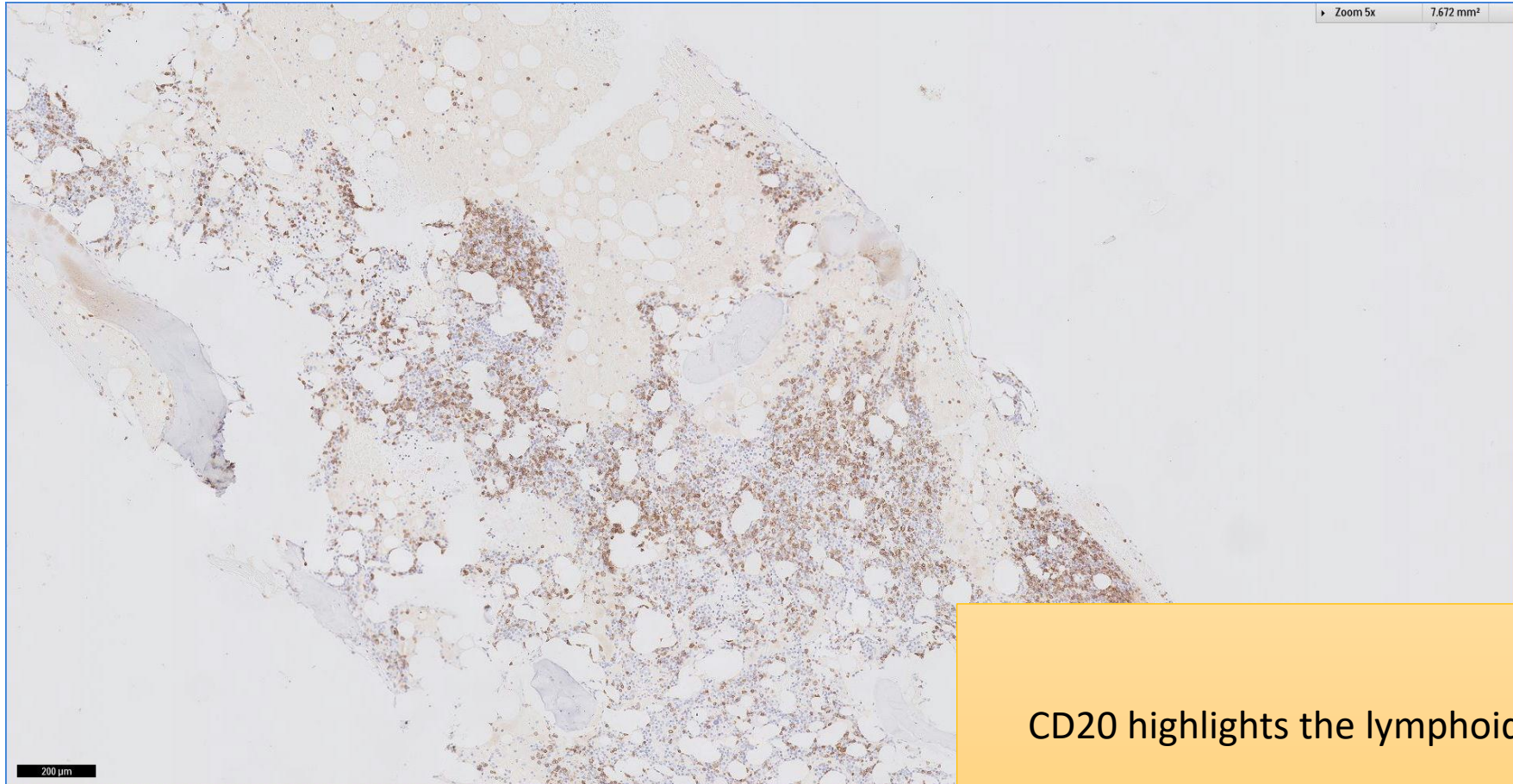
Lymphoid aggregates within the interstitium
and paratrabeular region

SGH CASE 28: 17RE147 H&E



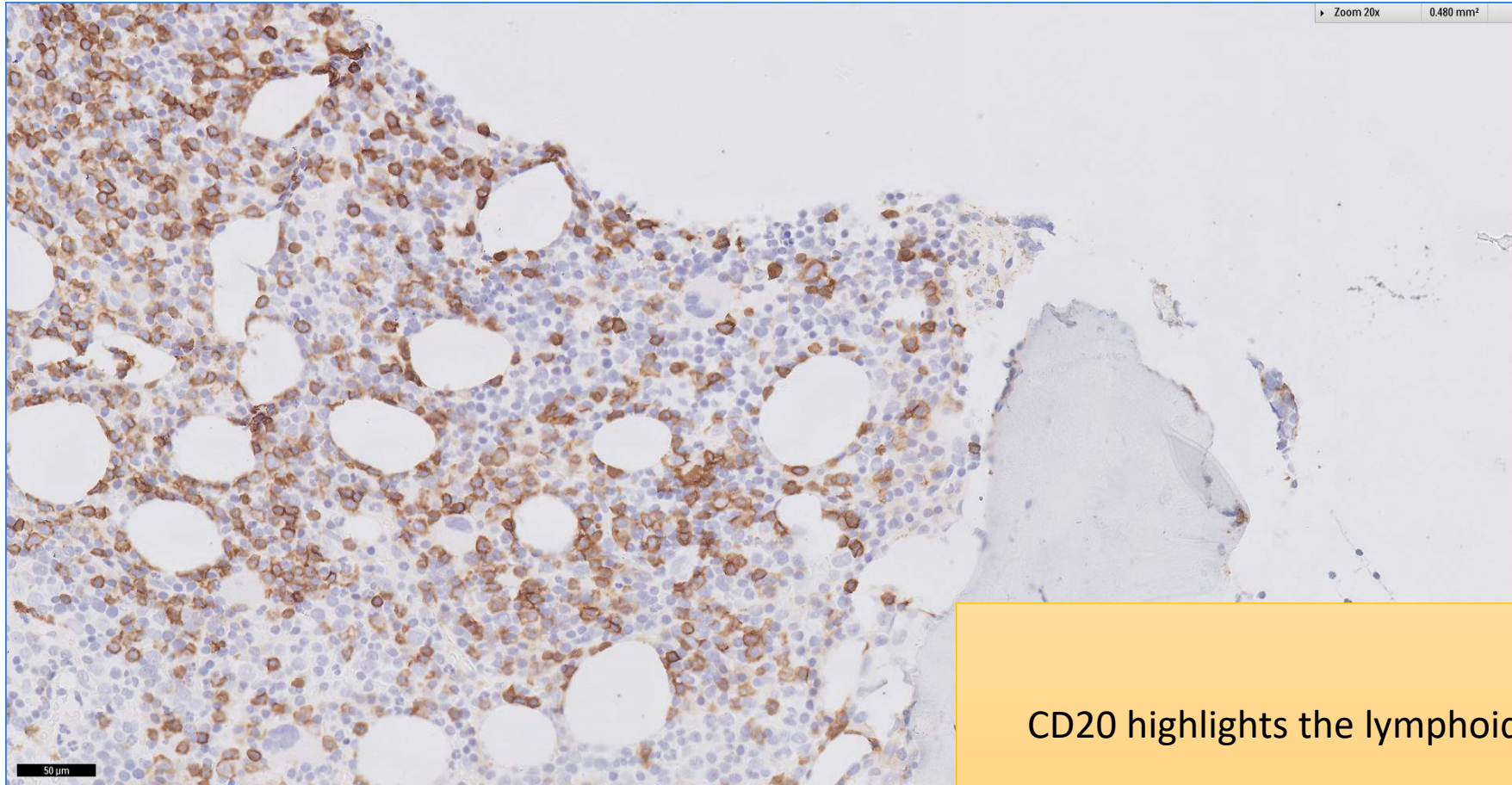
Lymphoid aggregates are composed mostly of small lymphocytes admixed with plasma cells

SGH CASE 28: 17RE147 CD20



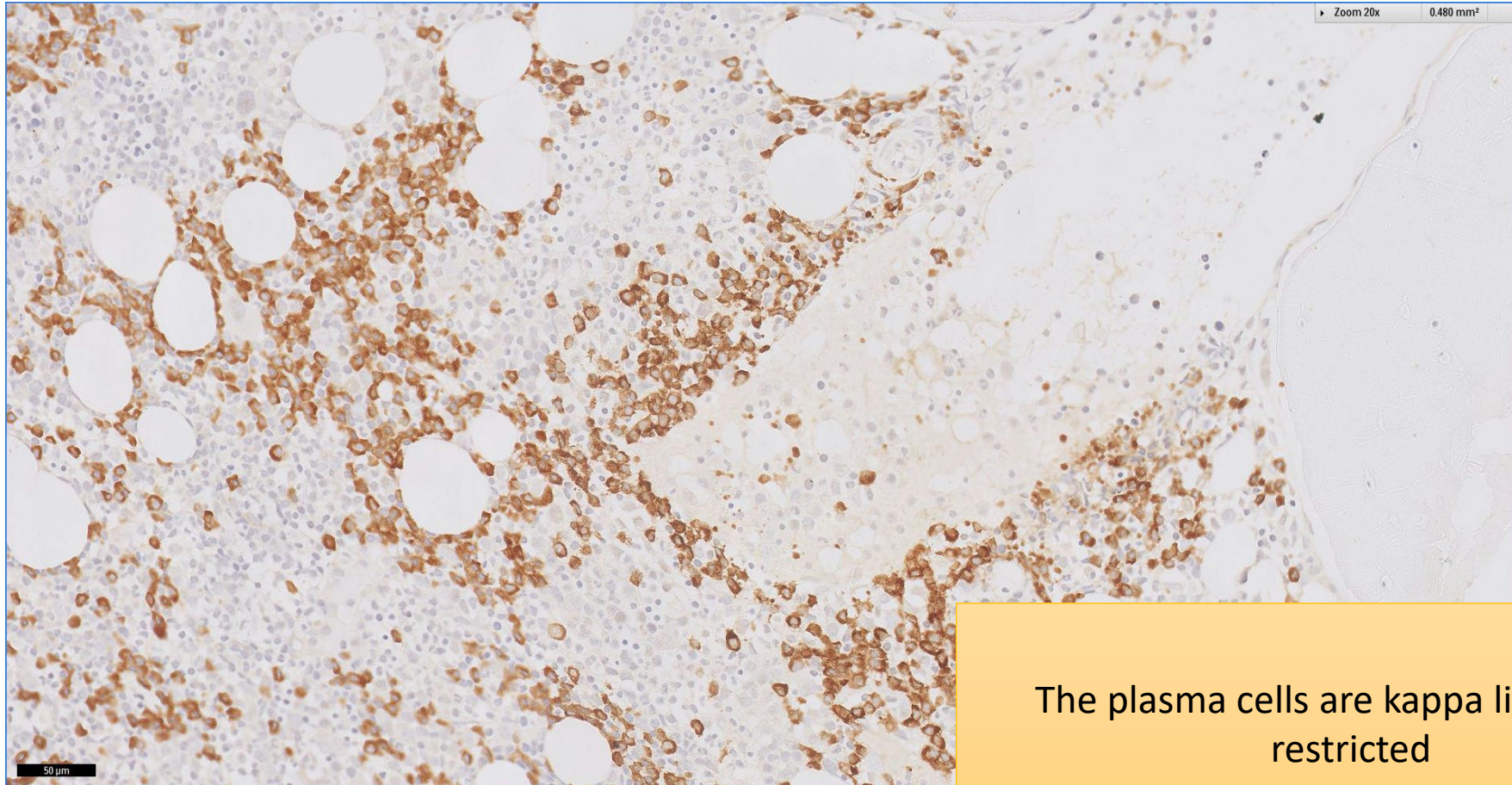
CD20 highlights the lymphoid infiltrate

SGH CASE 28: 17RE147 CD20



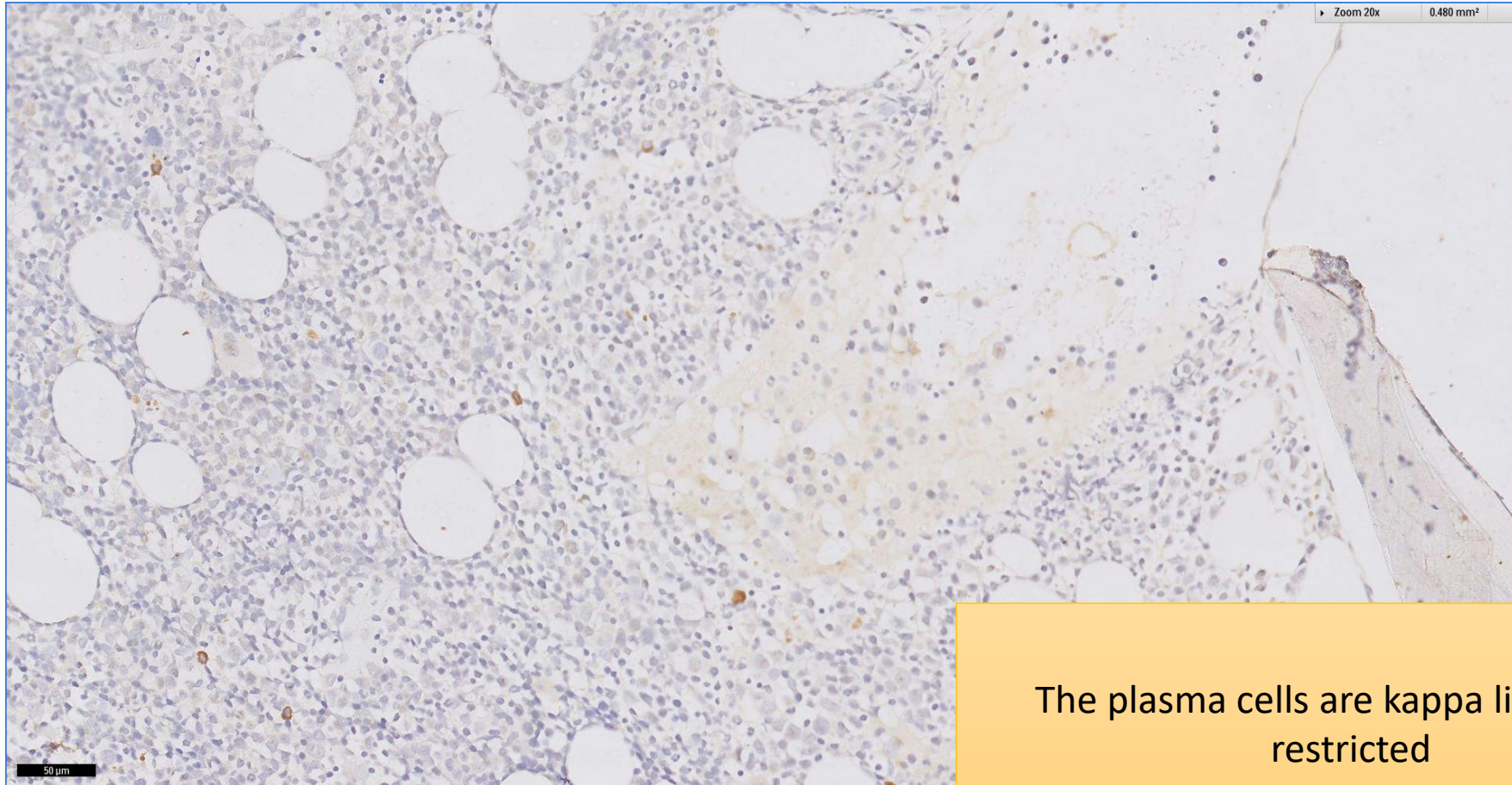
CD20 highlights the lymphoid infiltrate

SGH CASE 28: 17RE147 KAPPA-ISH



The plasma cells are kappa light chain restricted

SGH CASE 28: 17RE147 LAMBDA-ISH



The plasma cells are kappa light chain restricted

SGH CASE 28: 17RE147

- Diagnosis
 - Lymphoplasmacytic Lymphoma
- Lymphomatous infiltrate is negative for CD10, bcl6, cyclin D1, CD5, CD23 and CD123.