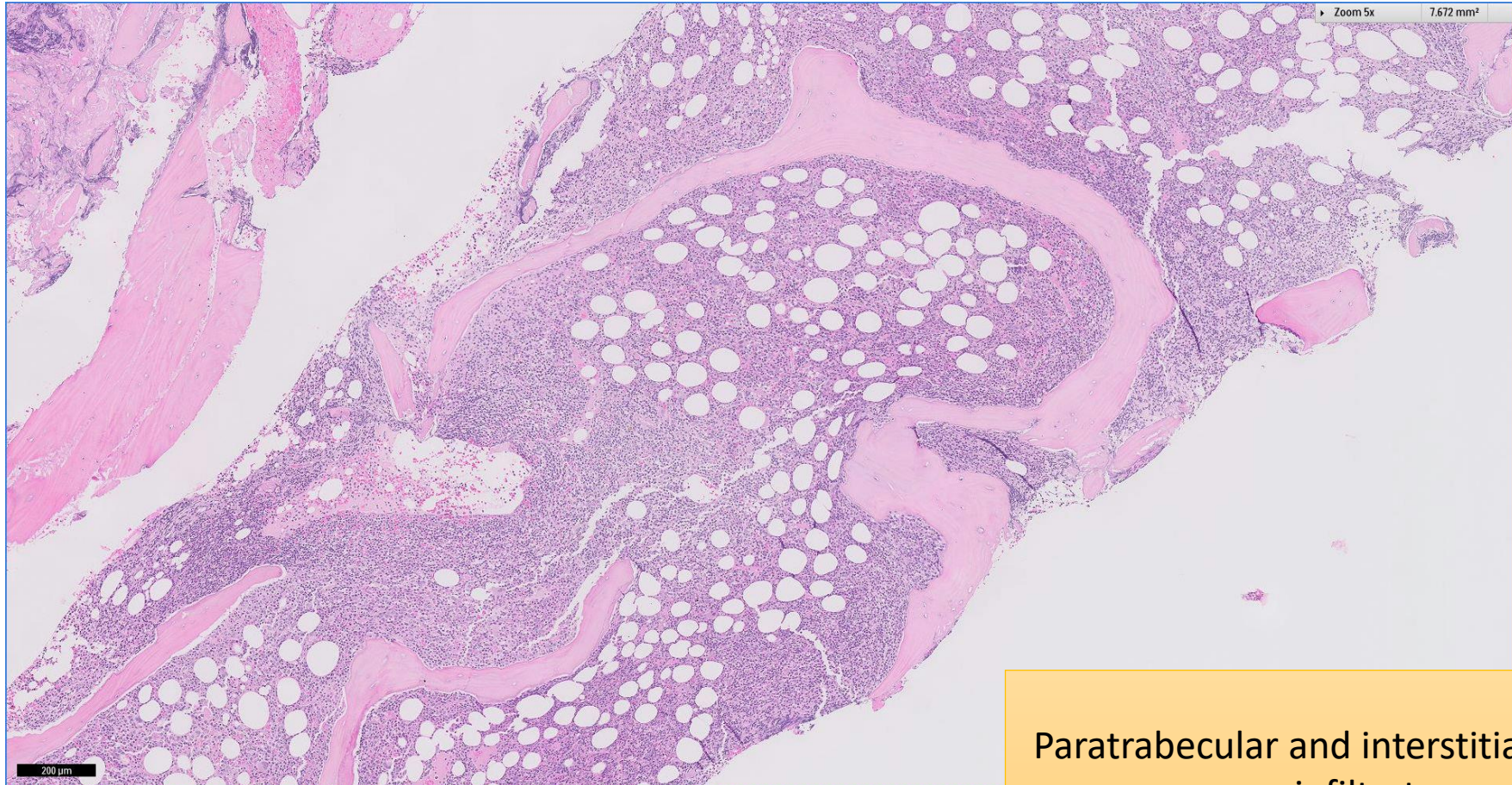


# SGH CASE 27: 17RE146

- Clinical History:
  - 70+ years old, Male. Raised serum paraprotein (IgM lambda) with raised ESR (>140). No splenomegaly.
- Specimen:
  - Bone marrow trephine biopsy

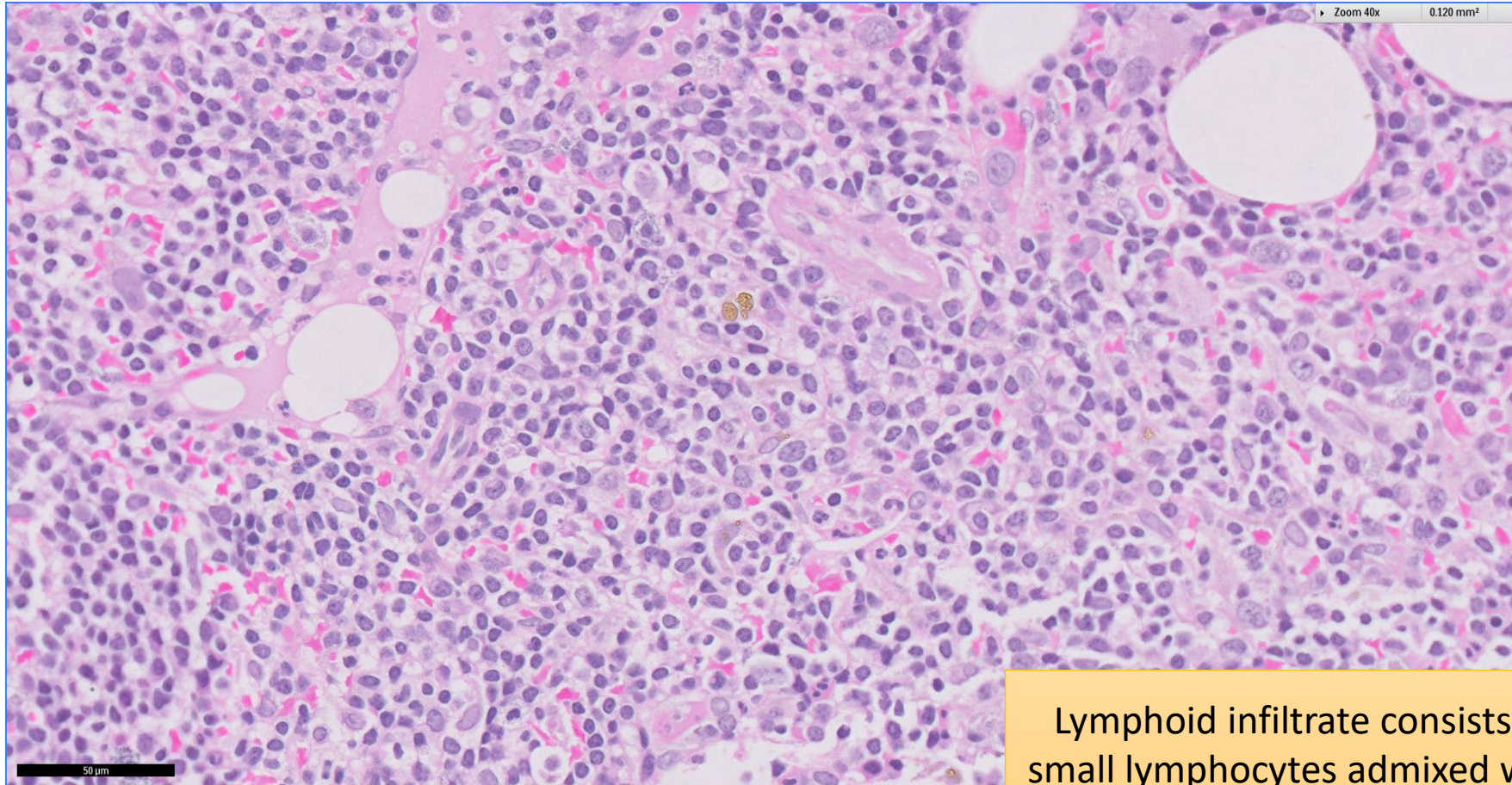
# SGH CASE 27: 17RE146 H&E



Paratrabeccular and interstitial lymphoid infiltrate



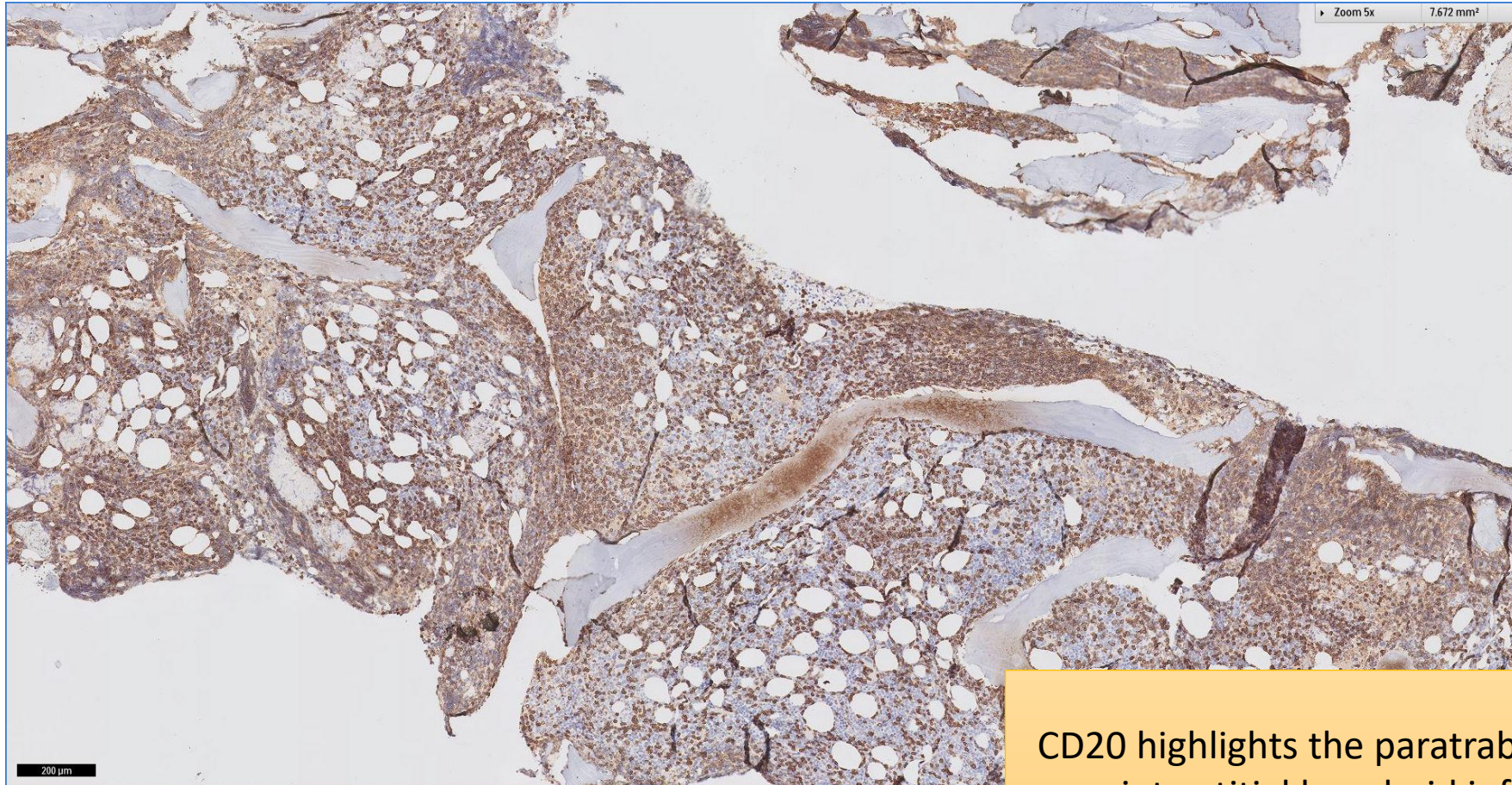
# SGH CASE 27: 17RE146 H&E



Lymphoid infiltrate consists mostly of small lymphocytes admixed with plasma cells



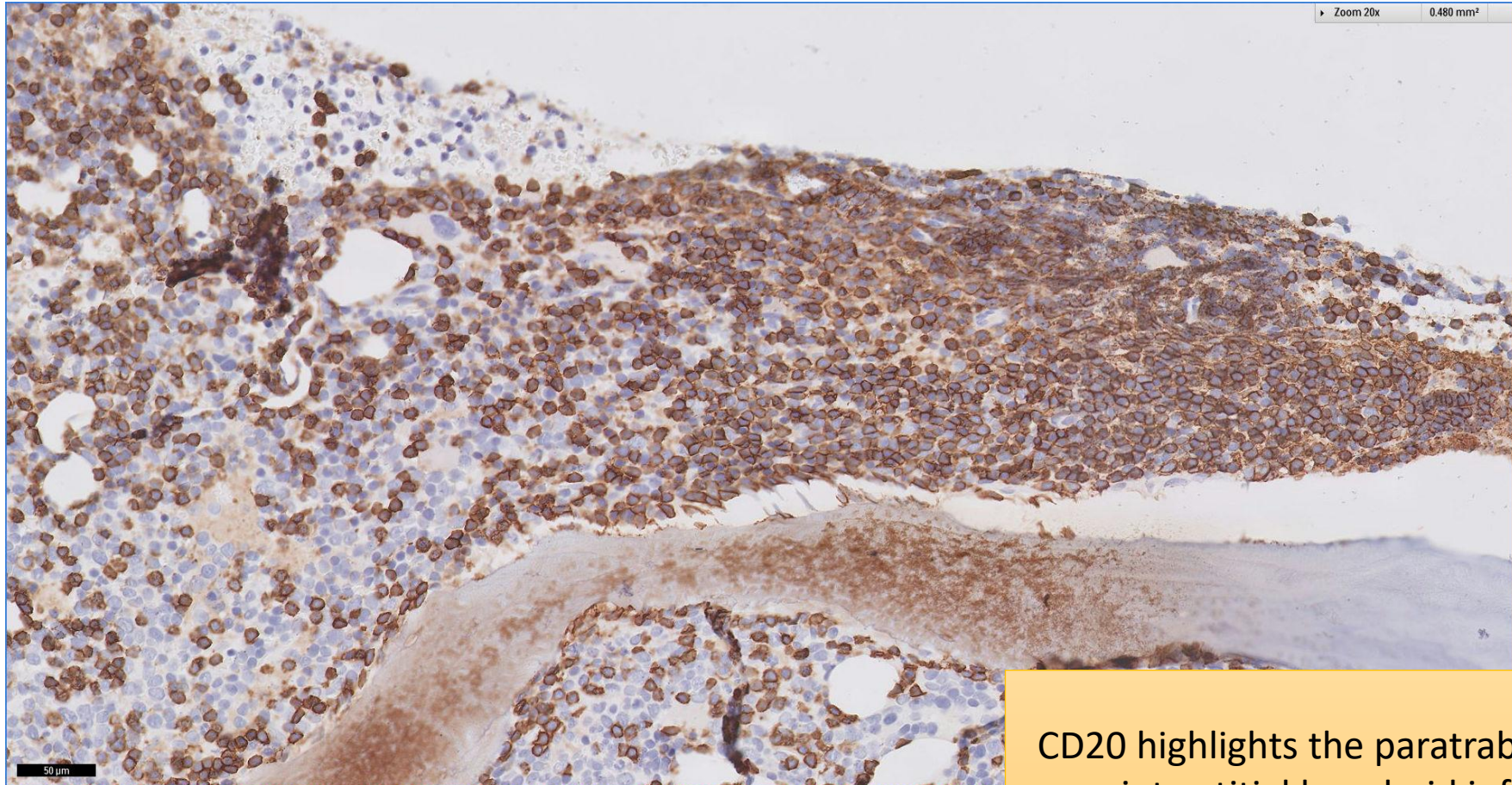
# SGH CASE 27: 17RE146 CD20



CD20 highlights the paratrabeular and interstitial lymphoid infiltrate



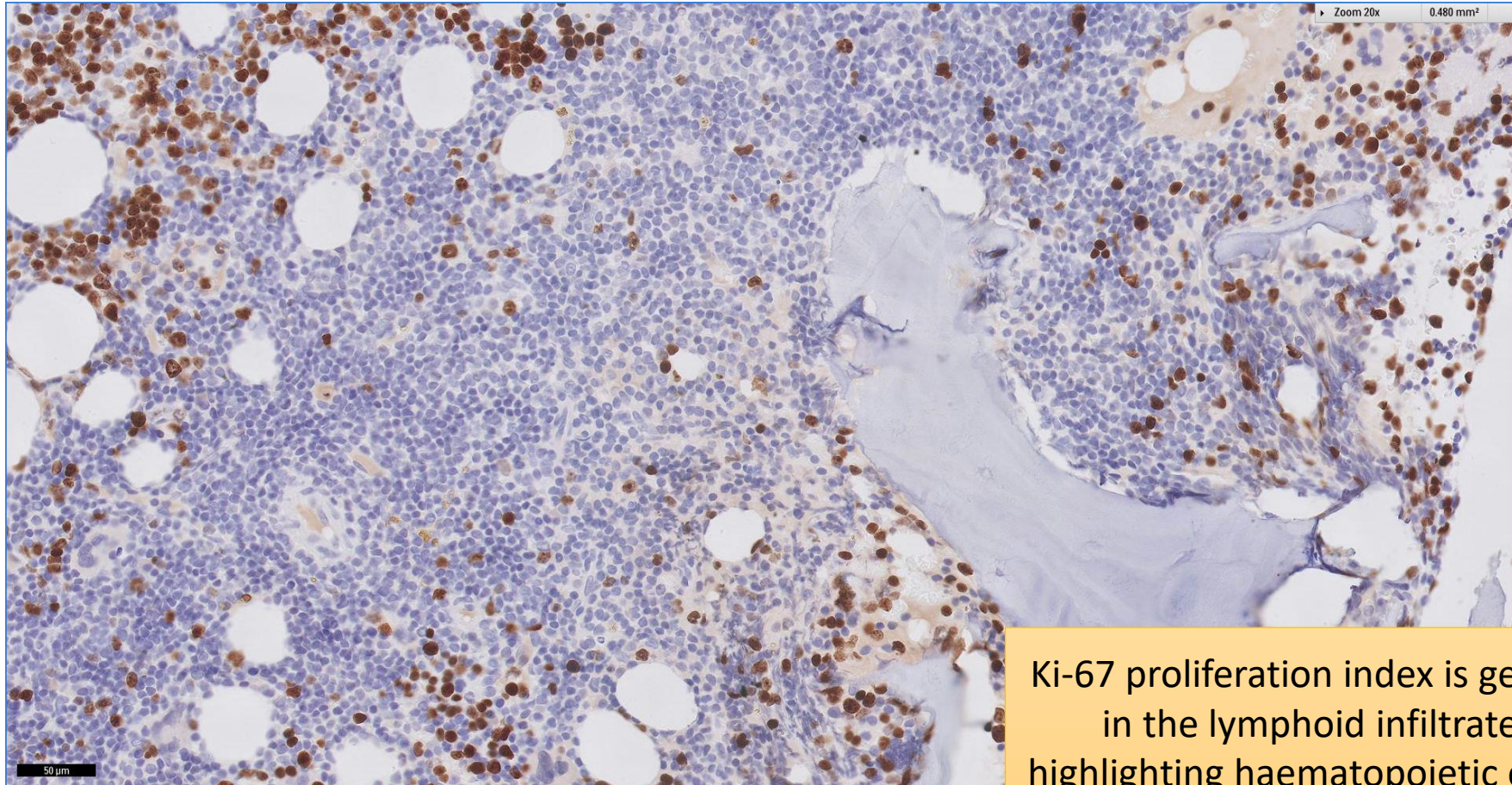
# SGH CASE 27: 17RE146 CD20



CD20 highlights the paratrabeular and interstitial lymphoid infiltrate



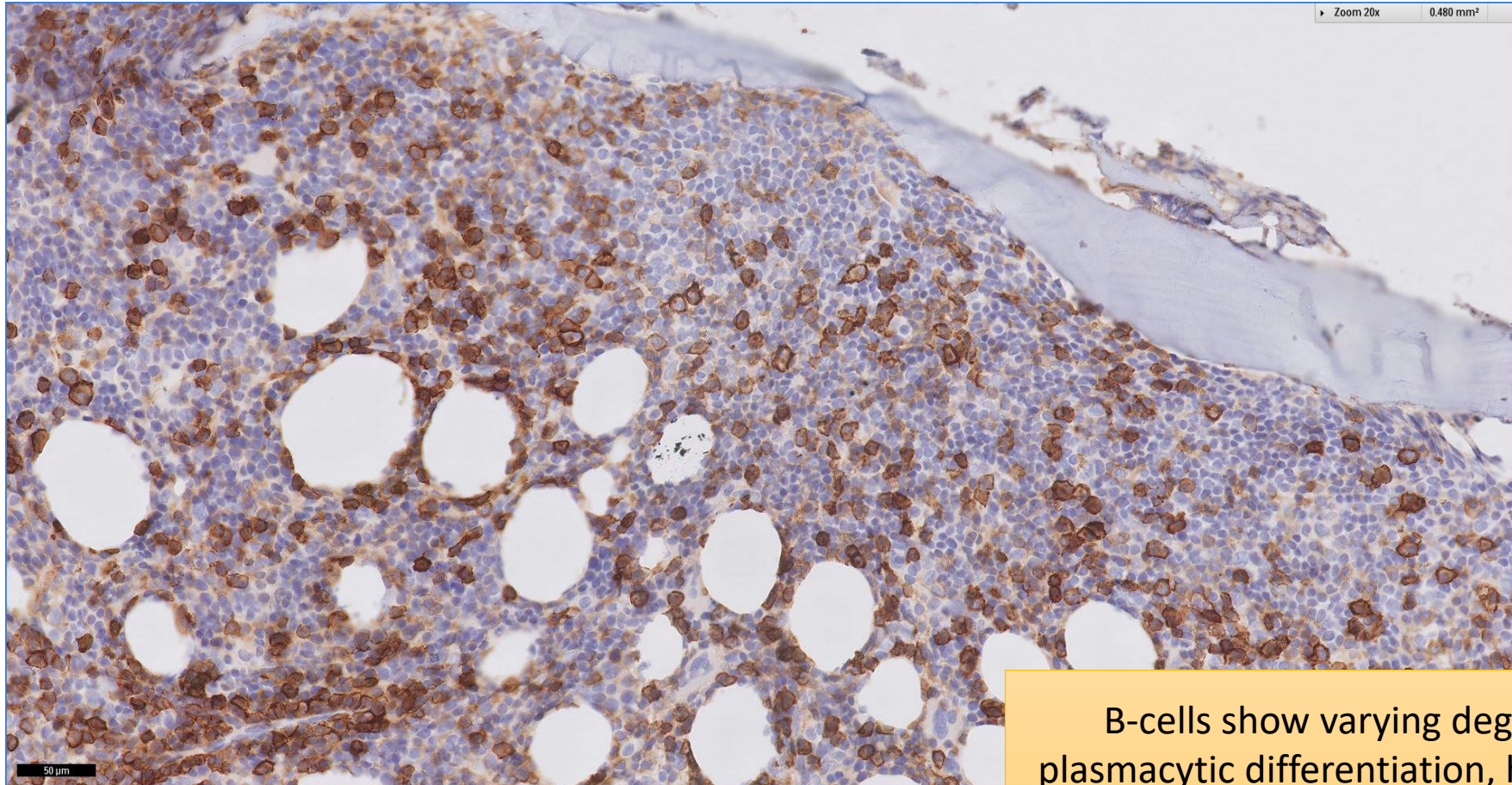
# SGH CASE 27: 17RE146 KI67



Ki-67 proliferation index is generally low in the lymphoid infiltrate, while highlighting haematopoietic elements in the periphery



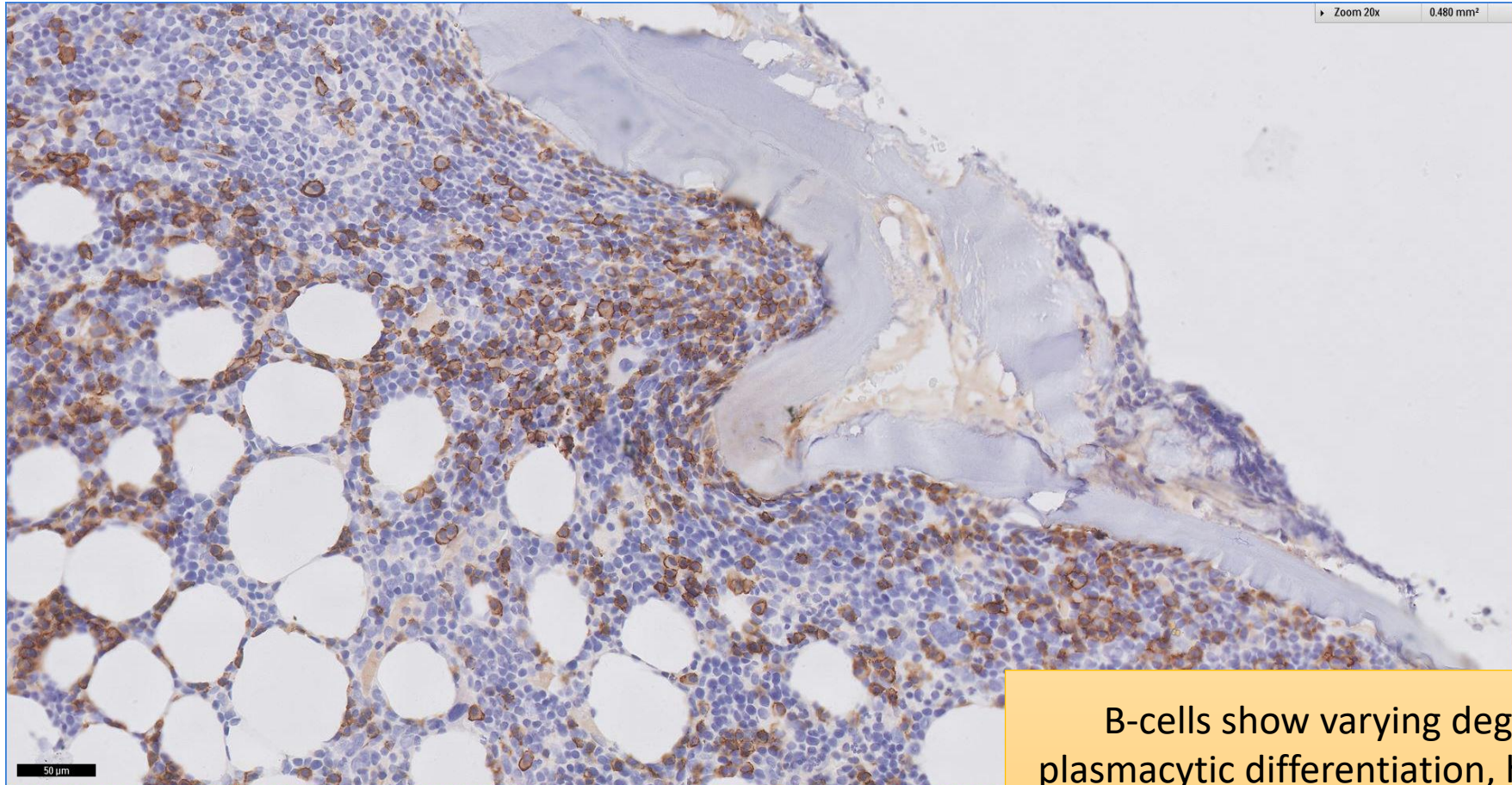
# SGH CASE 27: 17RE146 CD38



B-cells show varying degrees of plasmacytic differentiation, highlighted by CD38 and CD138



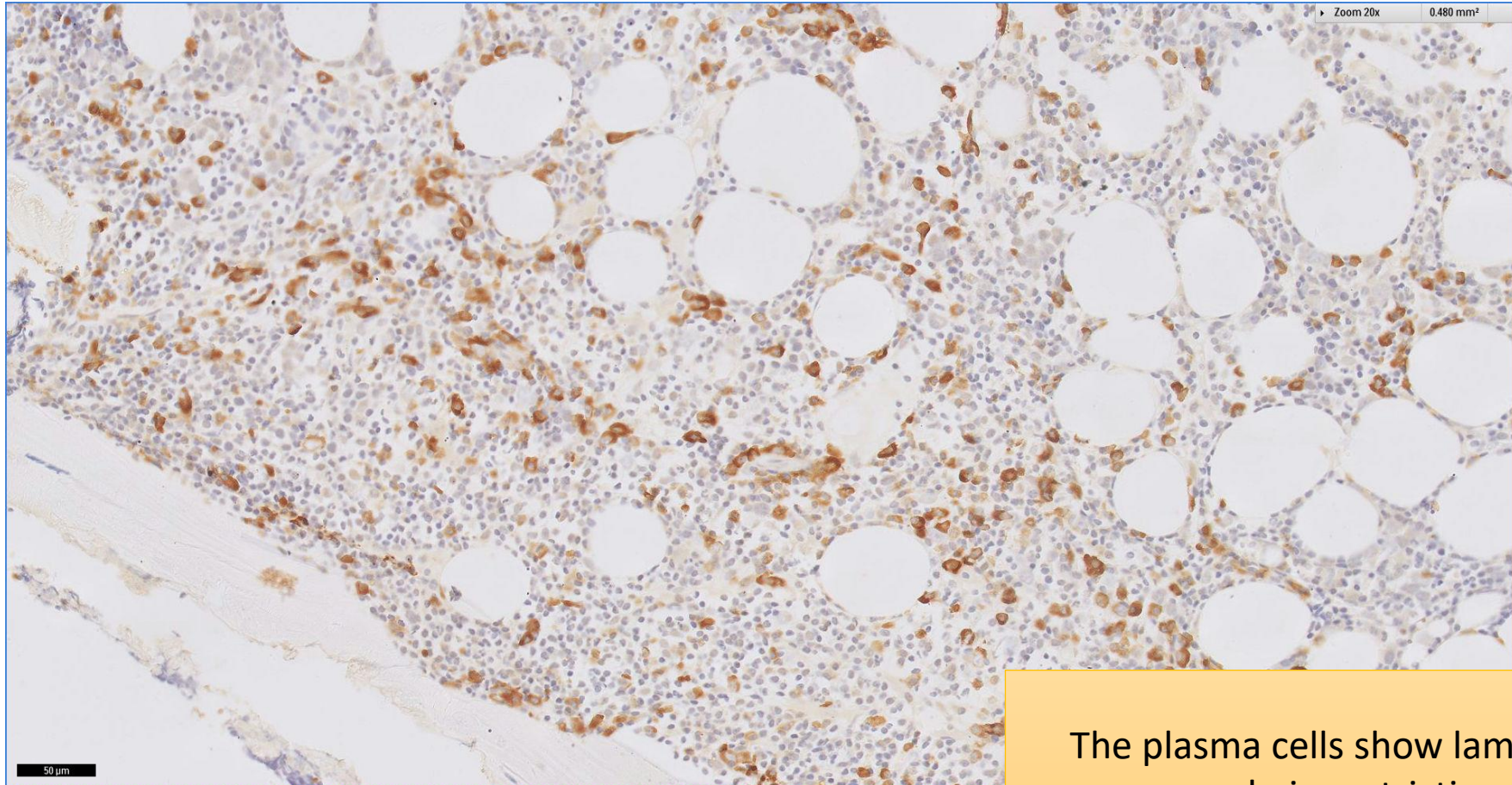
# SGH CASE 27: 17RE146 CD138



B-cells show varying degrees of plasmacytic differentiation, highlighted by CD38 and CD138



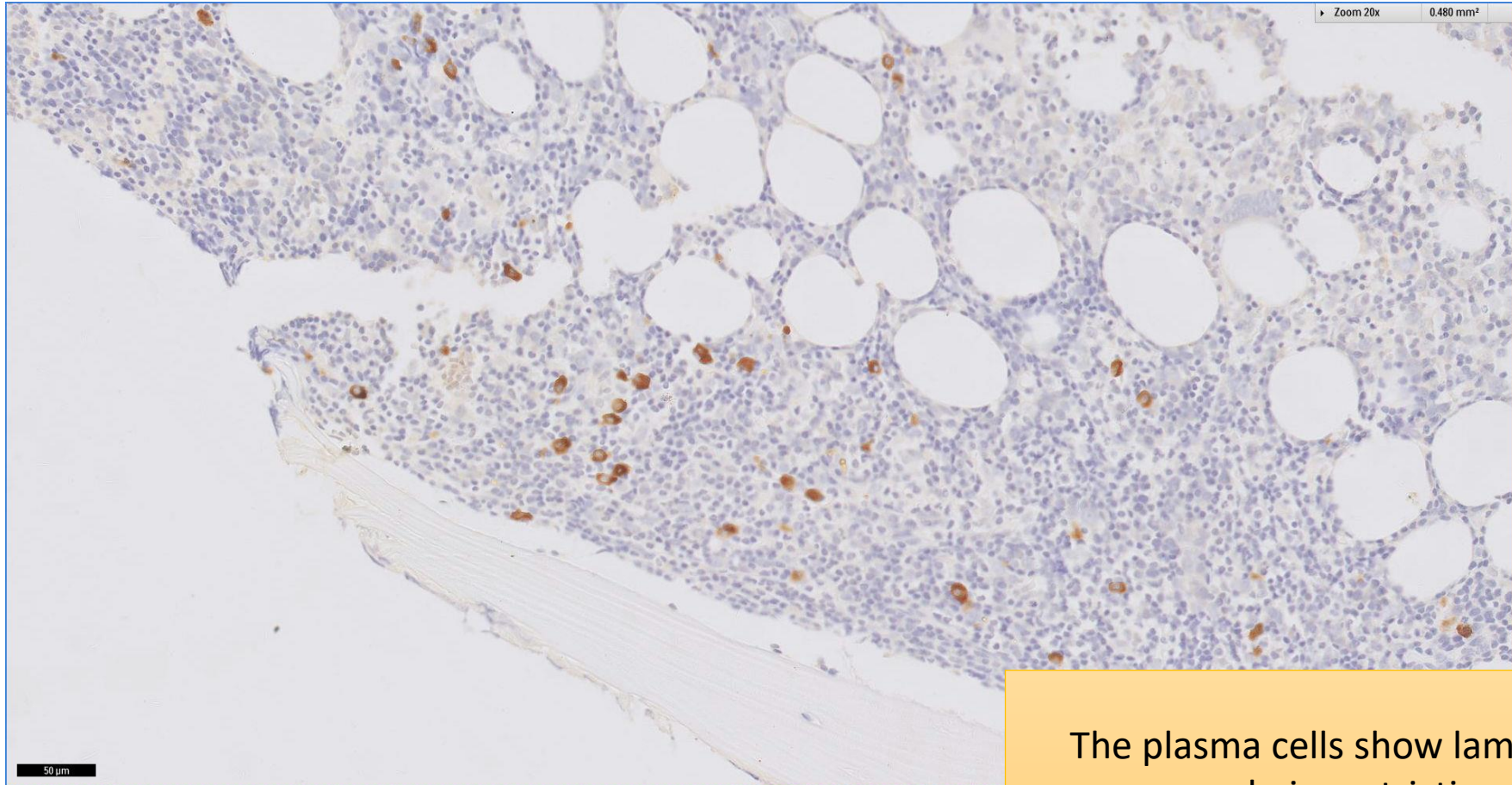
# SGH CASE 27: 17RE146 LAMBDA-ISH



The plasma cells show lambda light chain restriction



# SGH CASE 27: 17RE146 KAPPA-ISH



The plasma cells show lambda light chain restriction



# SGH CASE 27: 17RE146

- Diagnosis
  - Lymphoplasmacytic lymphoma with partial haematopoietic effacement
- Lymphomatous cells are negative for CD5 and cyclin D1 with reciprocal immunoreactivity for p27.