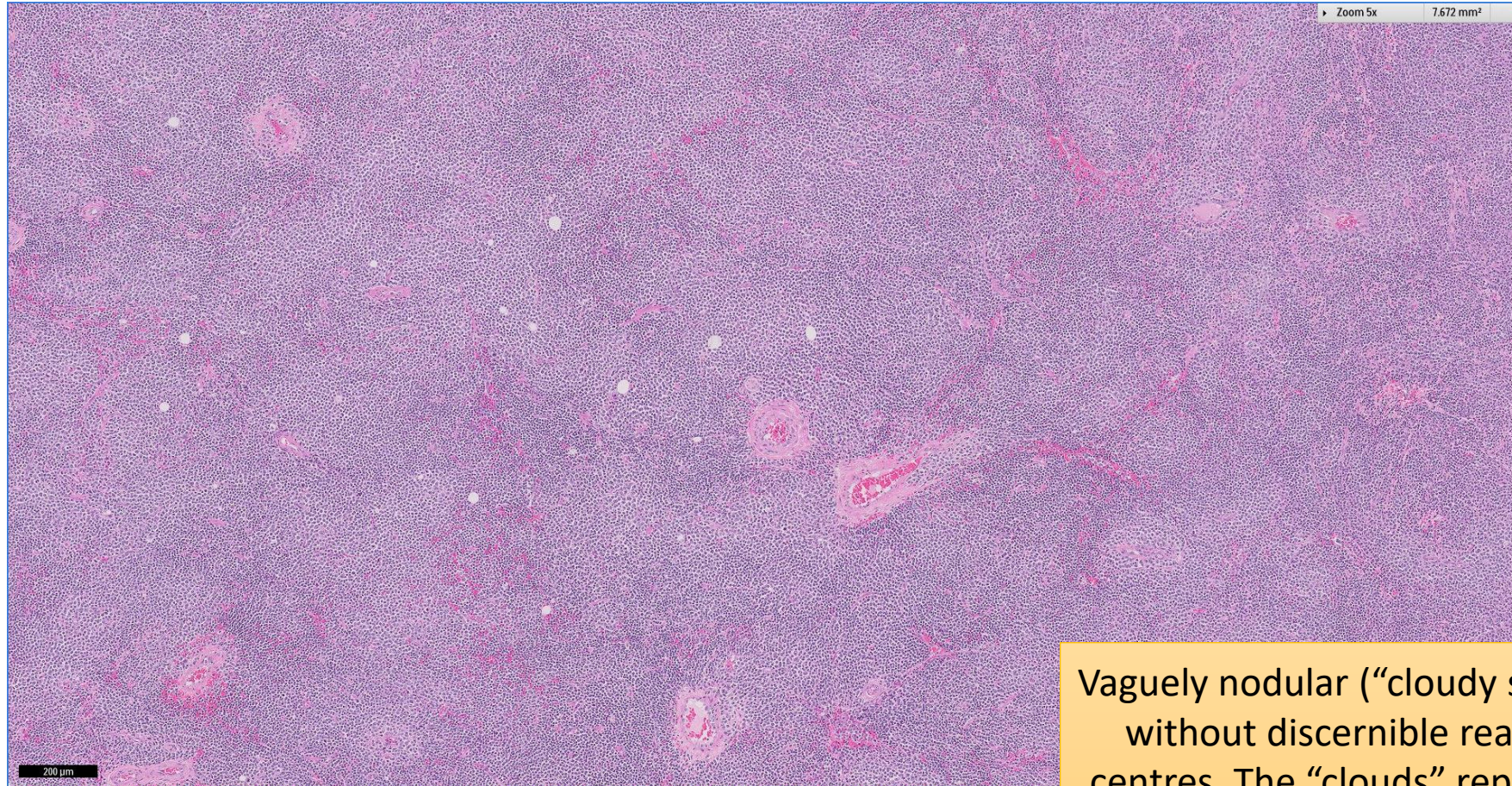


SGH CASE 26: 17RE144 & 17RE143

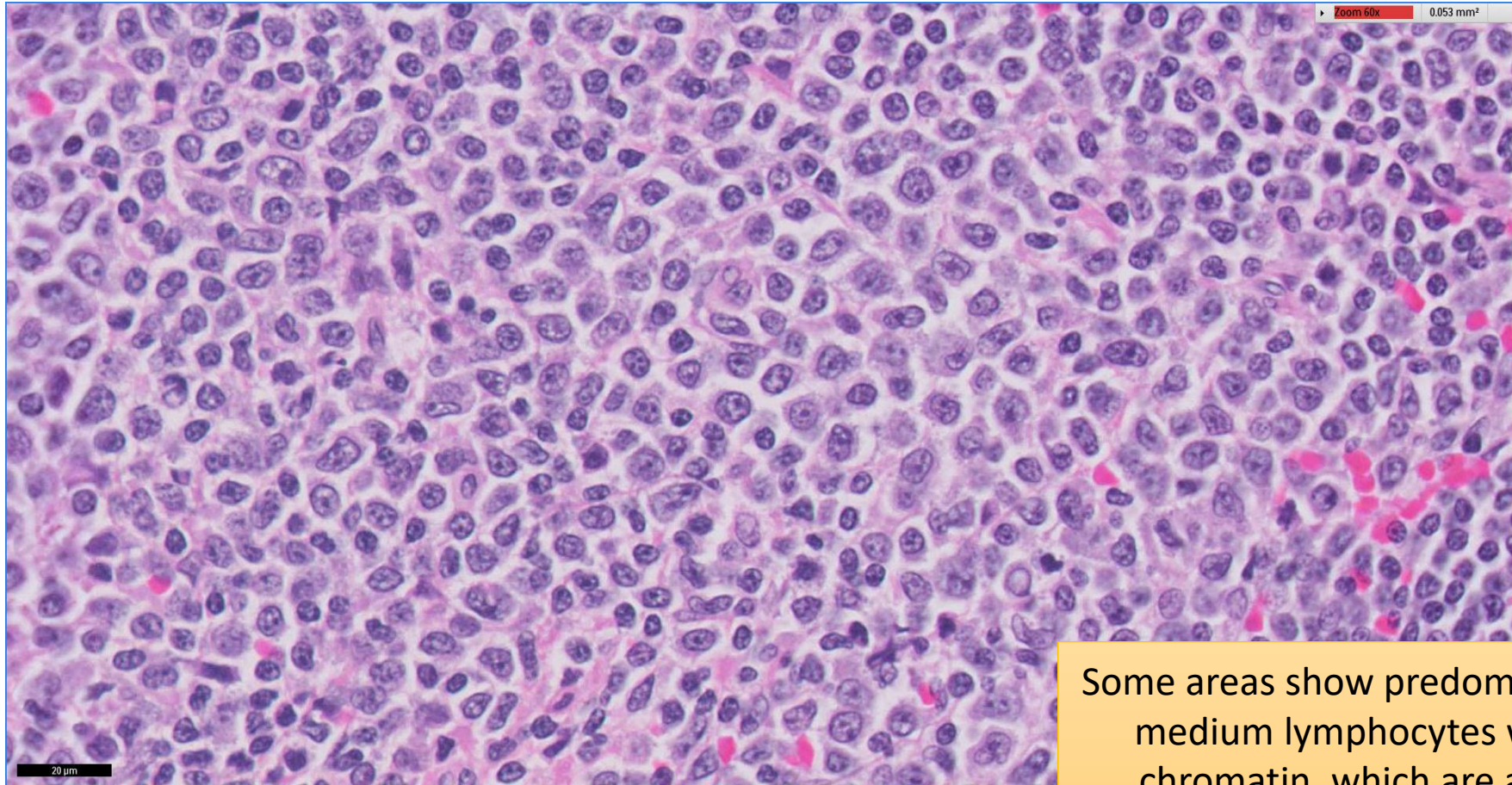
- Clinical History:
 - 60+ years old, Female. Hepatosplenomegaly and lymphadenopathy. Peripheral blood lymphocytosis ($49.11 \times 10^9/L$) with prolymphocytes ($5.78 \times 10^9/L$).
- Specimen:
 - Bone marrow trephine biopsy (17RE143) and lymph node biopsy (17RE144)

SGH CASE 26: 17RE144 LYMPH NODE H&E



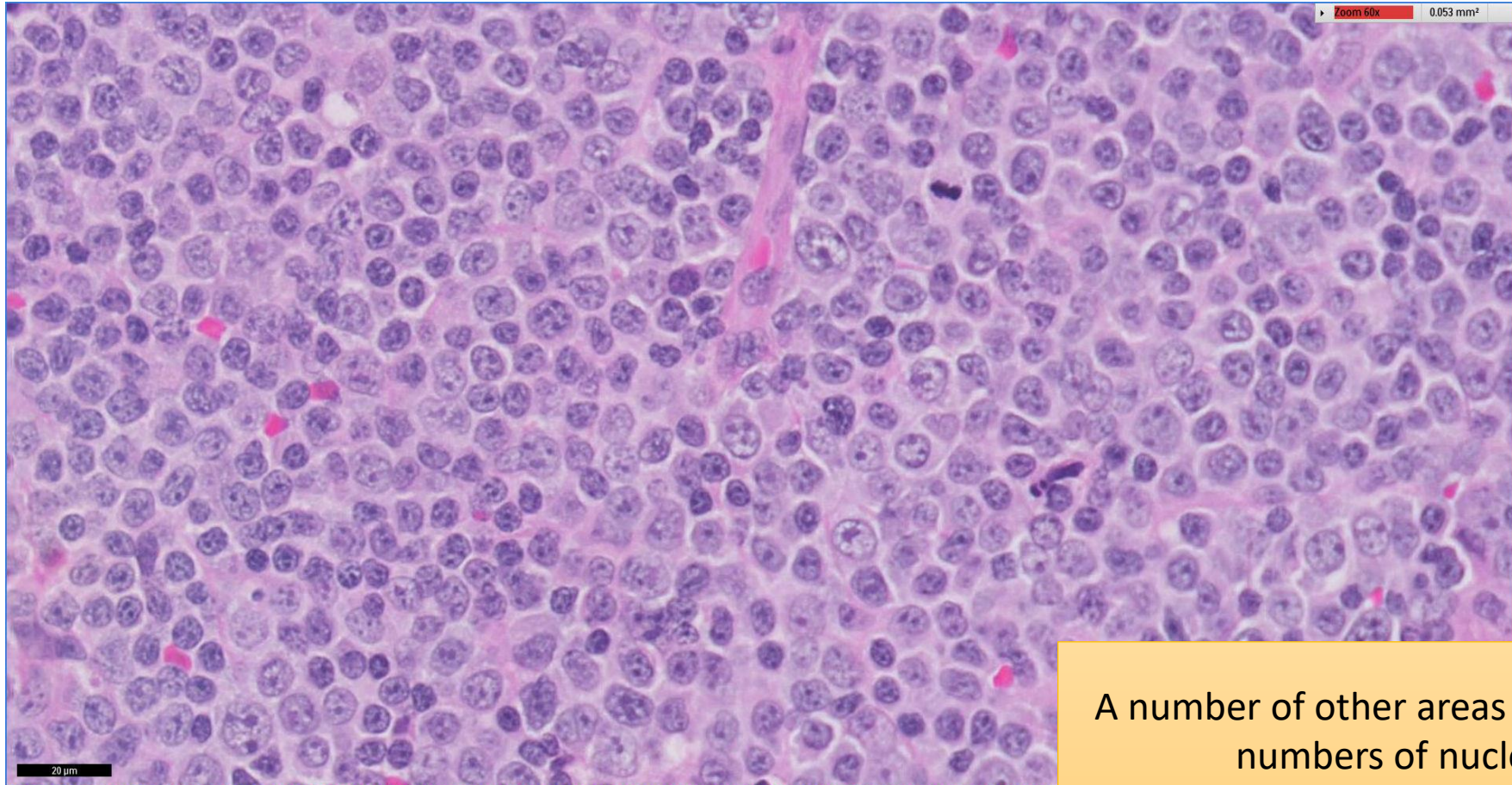
Vaguely nodular (“cloudy sky” appearance) without discernible reactive germinal centres. The “clouds” represent enlarged, coalescent proliferation centres.

SGH CASE 26: 17RE144 LYMPH NODE H&E



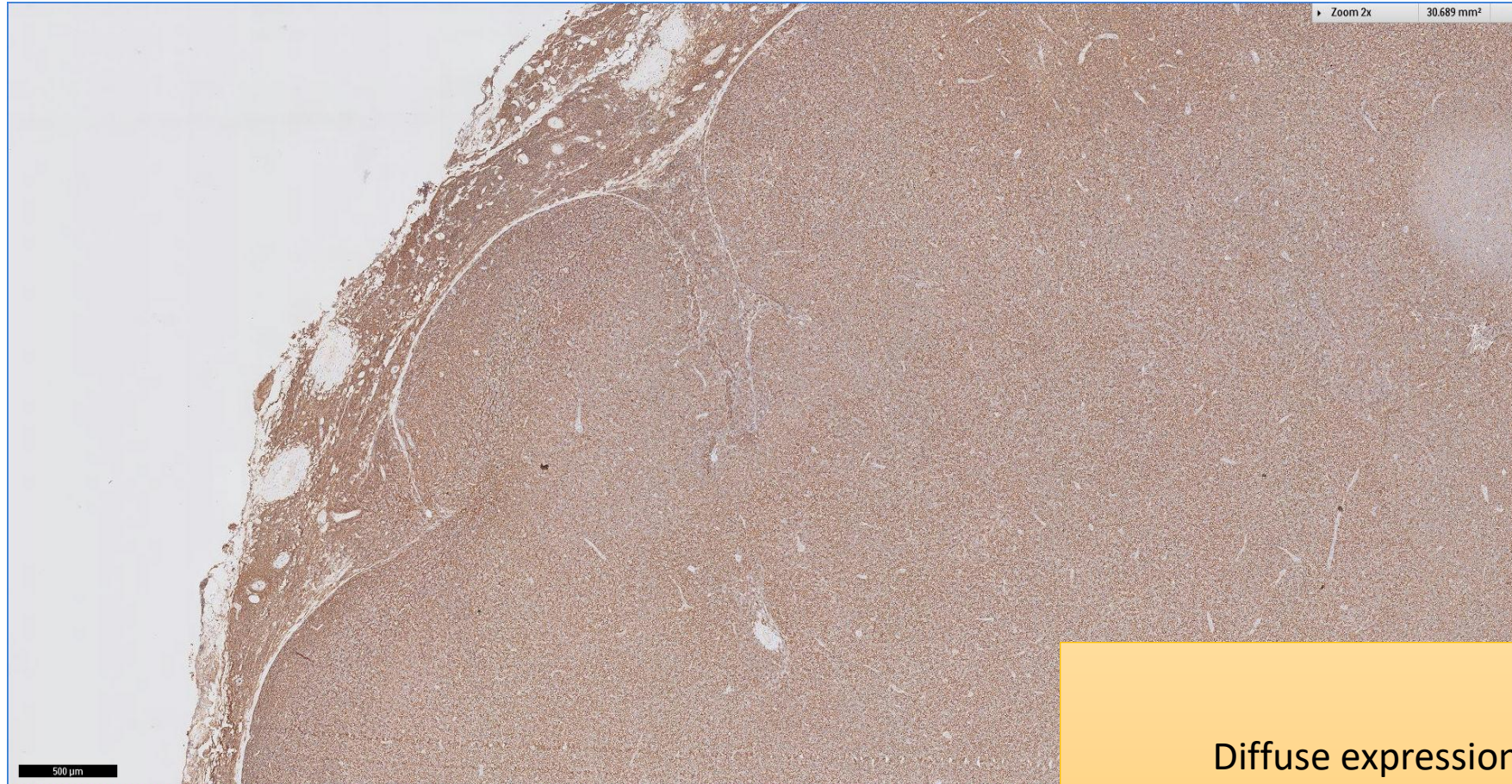
Some areas show predominantly small-to-medium lymphocytes with clumped chromatin, which are admixed with nucleolated cells

SGH CASE 26: 17RE144 LYMPH NODE H&E



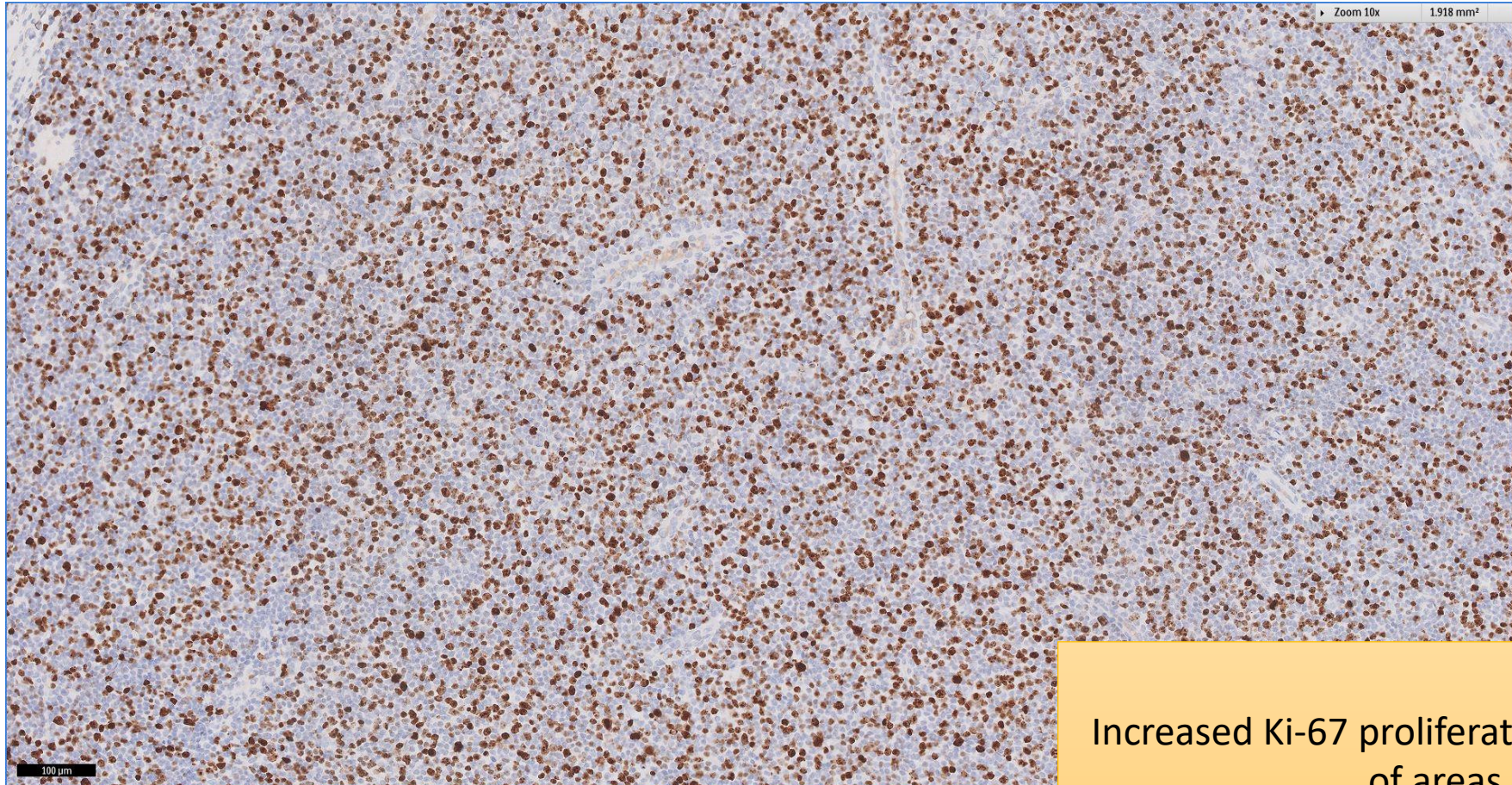
A number of other areas show increased numbers of nucleolated paraimmunoblasts

SGH CASE 26: 17RE144 LYMPH NODE CD20



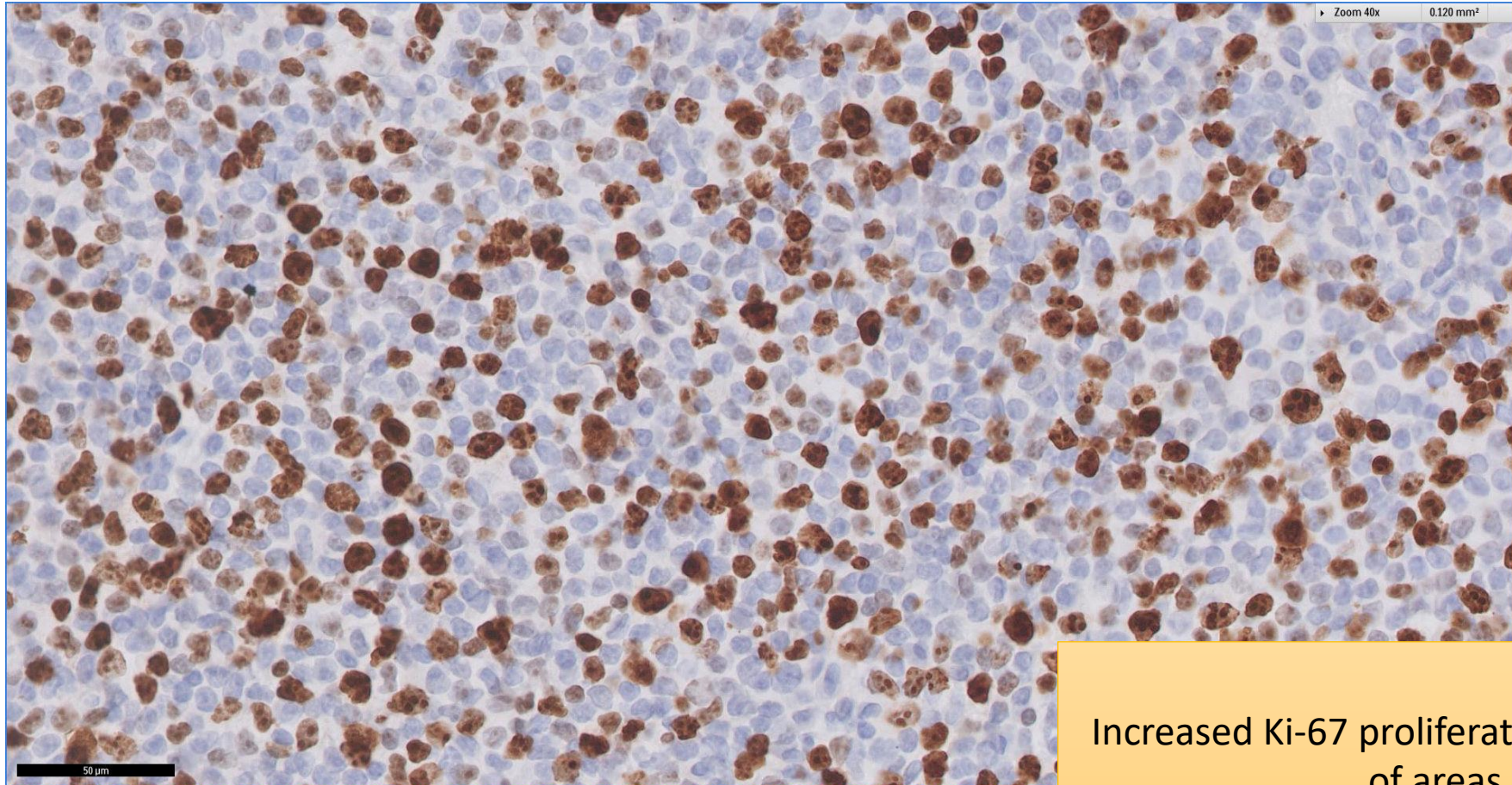
Diffuse expression of CD20

SGH CASE 26: 17RE144 LYMPH NODE KI67



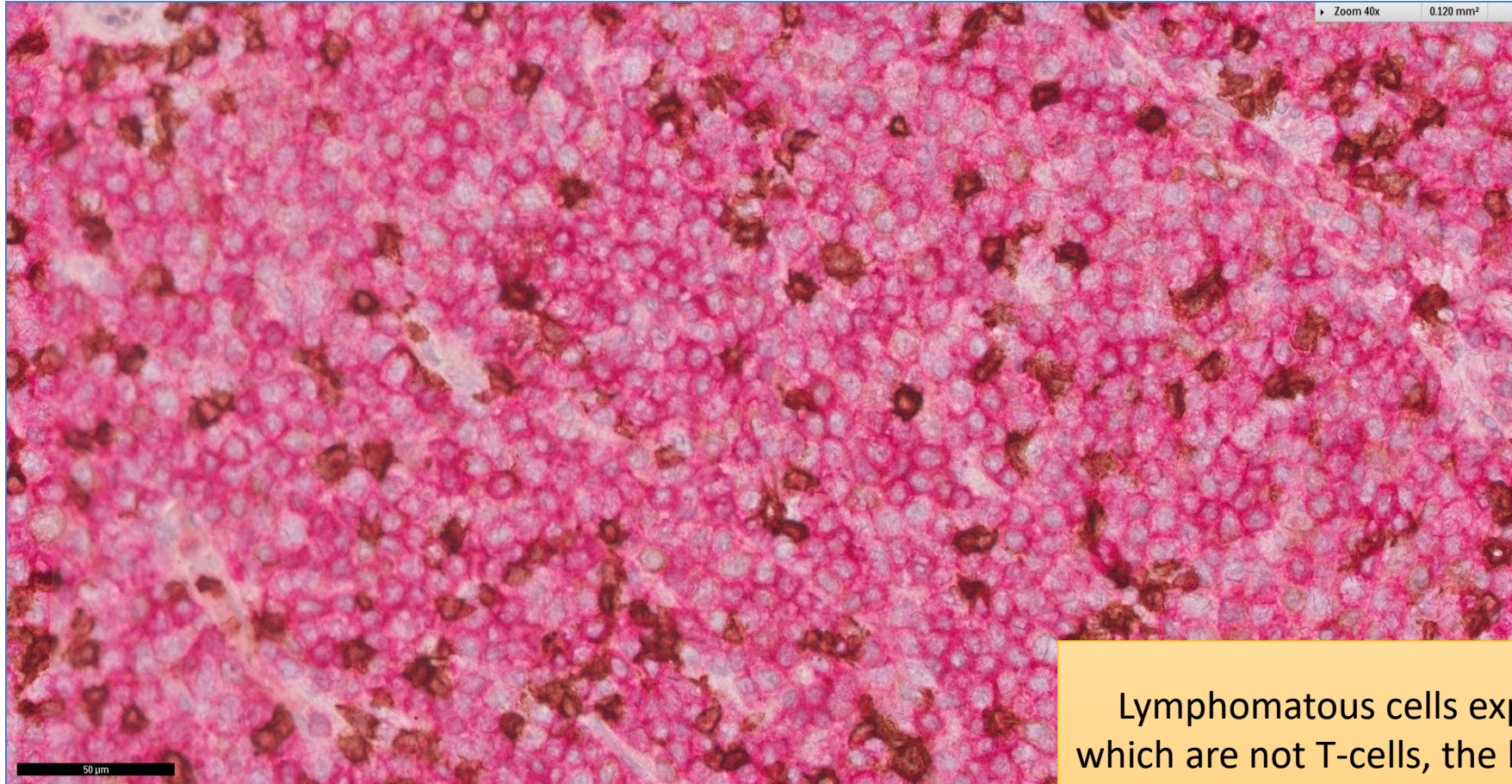
Increased Ki-67 proliferation in a number of areas

SGH CASE 26: 17RE144 LYMPH NODE KI67



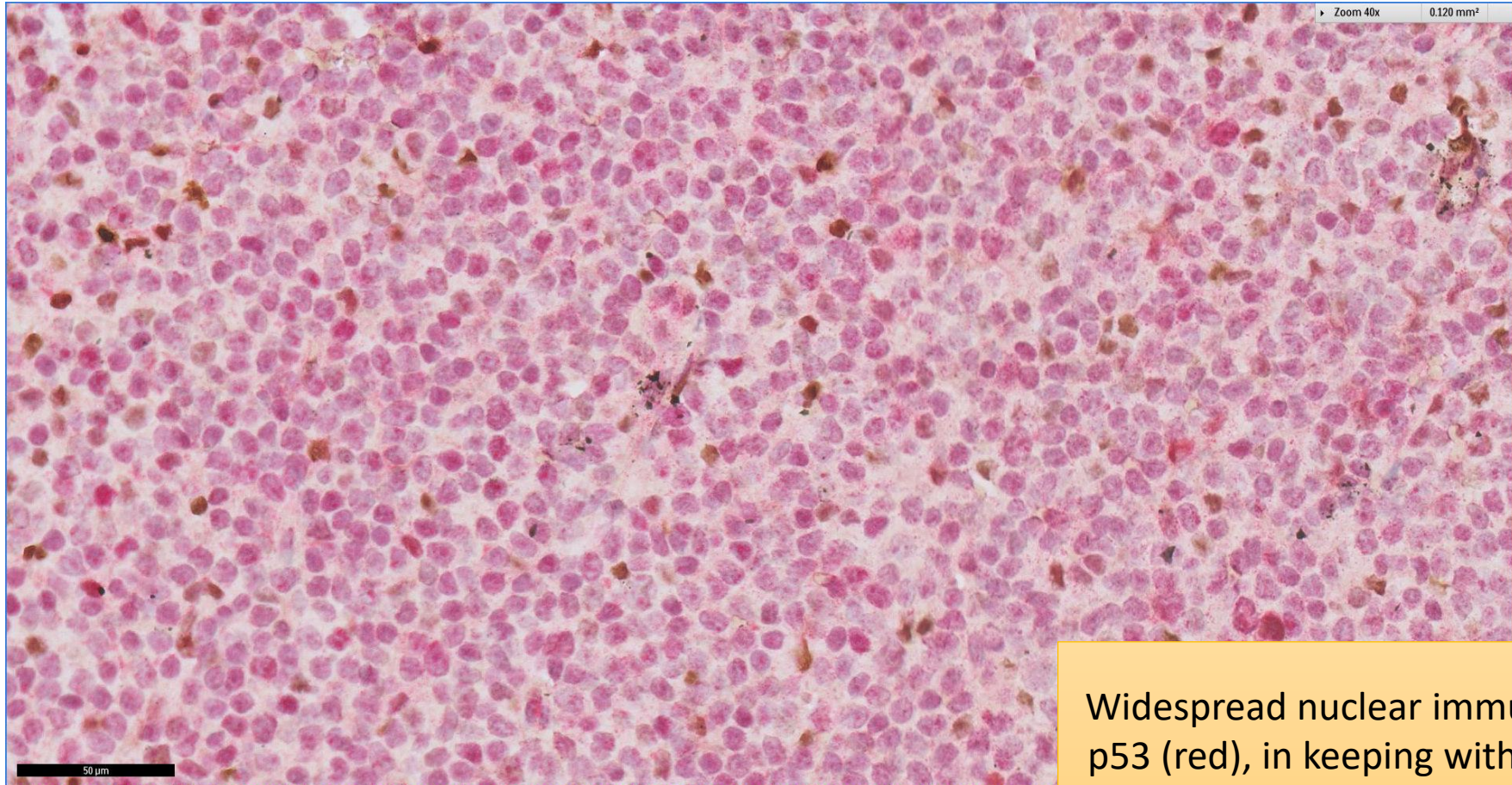
Increased Ki-67 proliferation in a number of areas

SGH CASE 26: 17RE144 LYMPH NODE CD5(RED) CD3(BROWN)



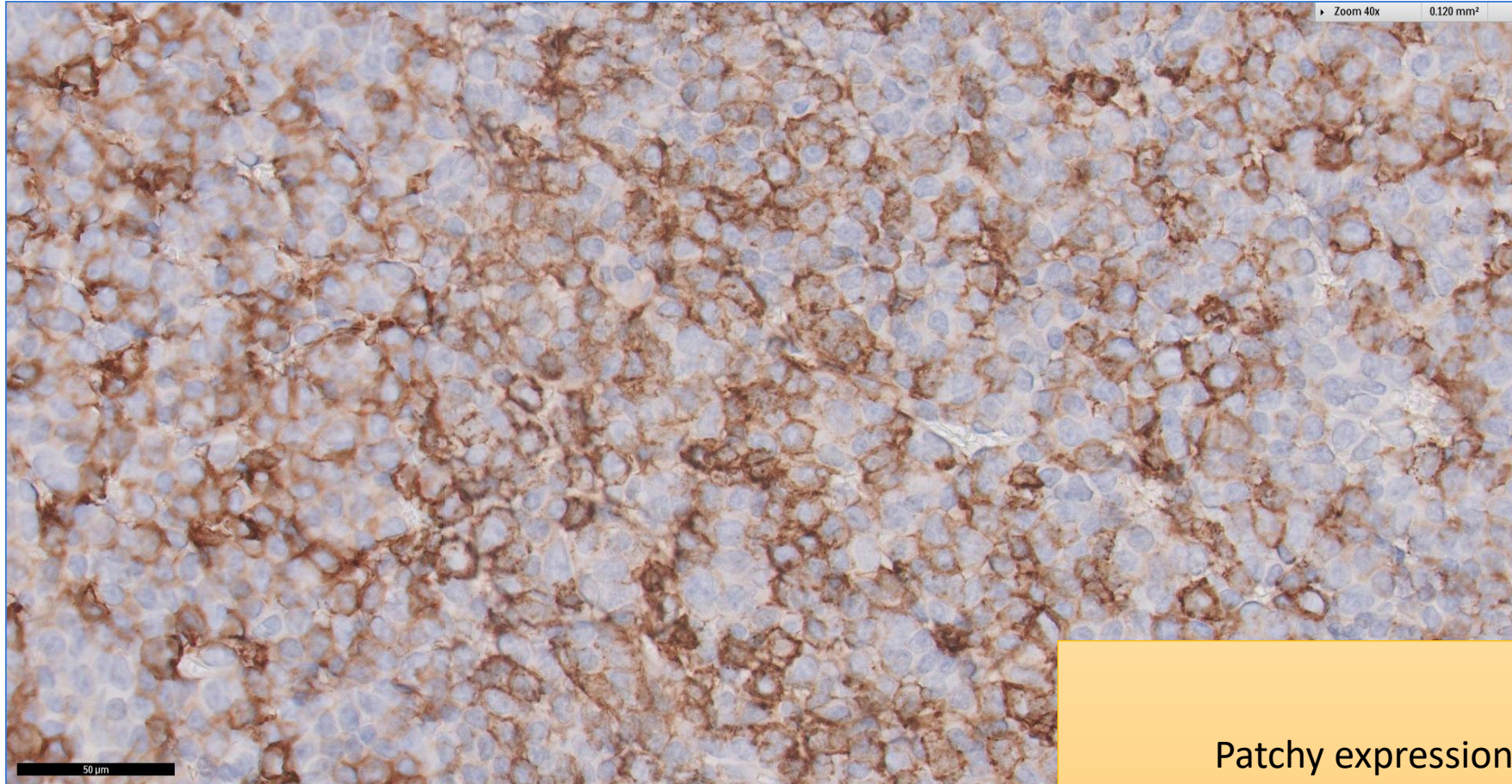
Lymphomatous cells express CD5(red)
which are not T-cells, the latter highlighted
by CD3

SGH CASE 26: 17RE144 LYMPH NODE P53(RED) P21(BROWN)



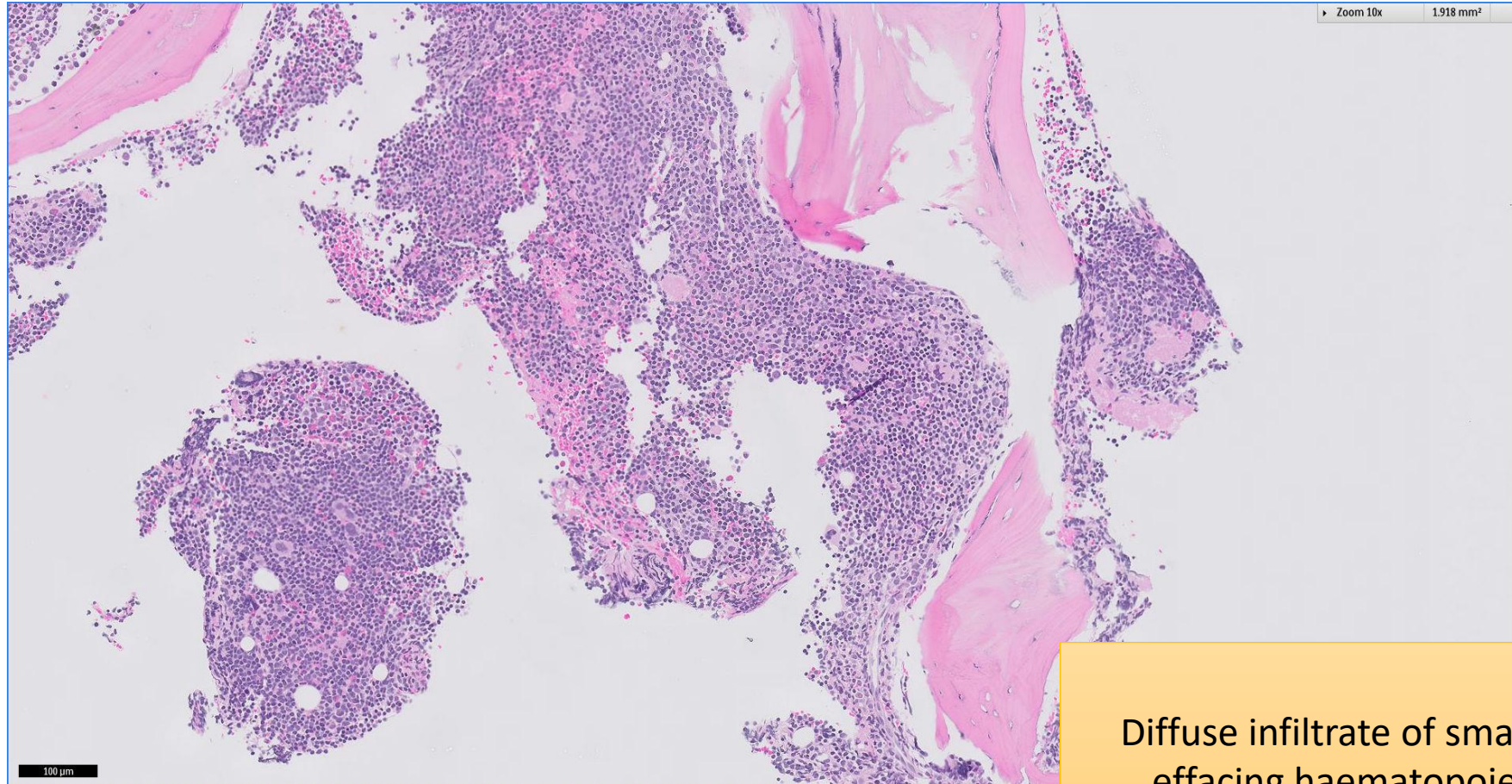
Widespread nuclear immunoreactivity for p53 (red), in keeping with mutant protein expression

SGH CASE 26: 17RE144 LYMPH NODE CD23



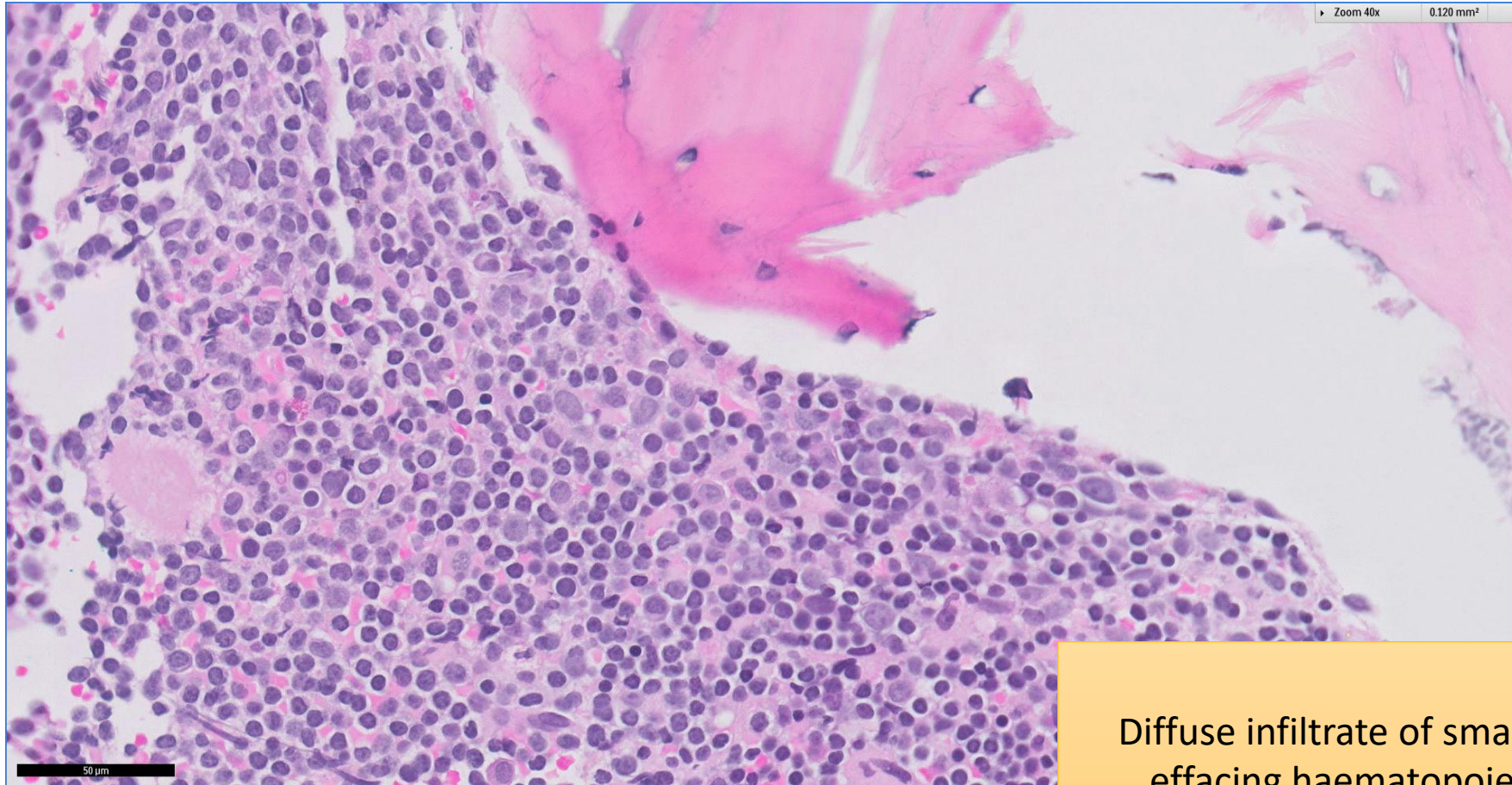
Patchy expression of CD23

SGH CASE 26: 17RE143 BONE MARROW H&E



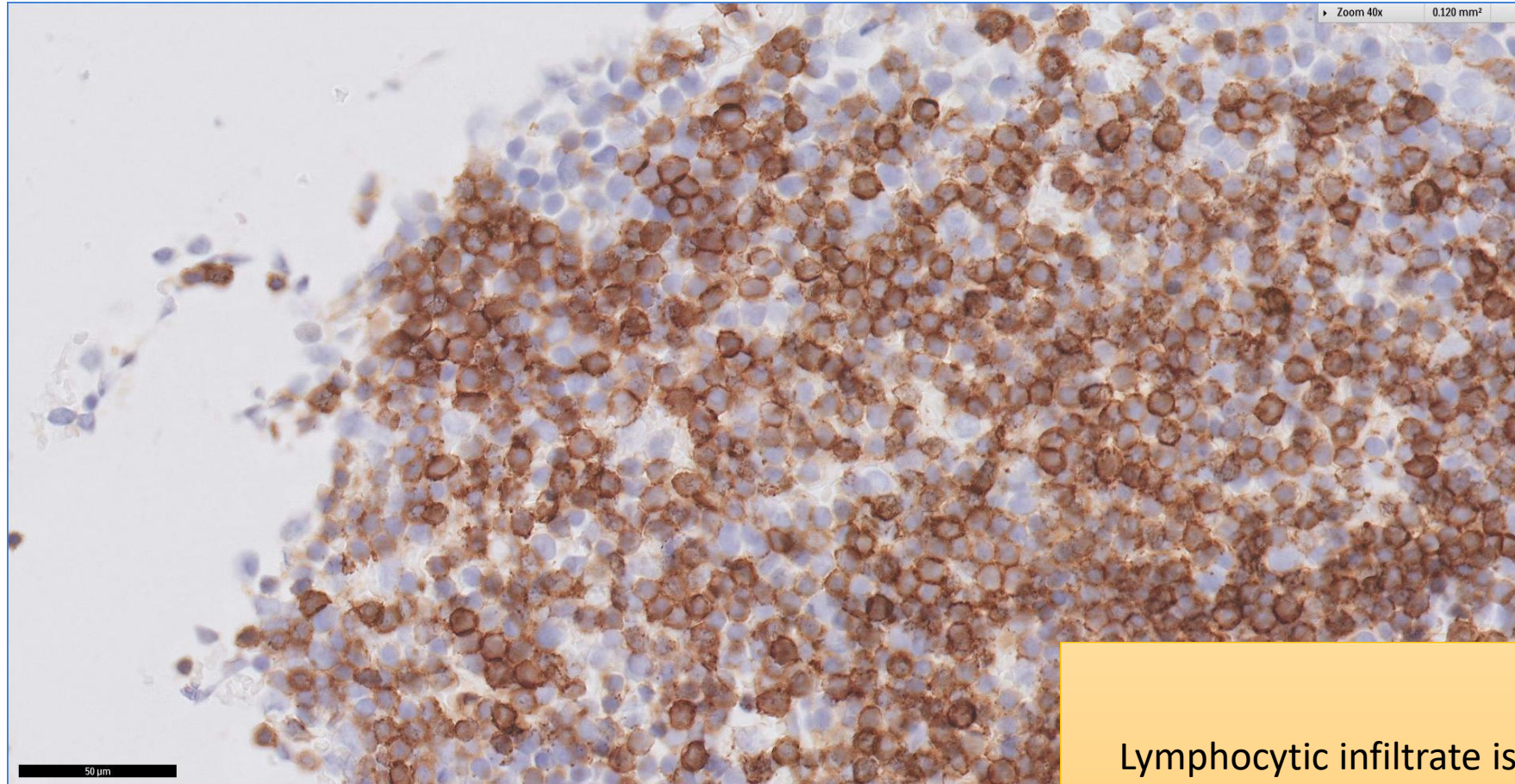
Diffuse infiltrate of small lymphocytes
effacing haematopoietic elements

SGH CASE 26: 17RE143 BONE MARROW H&E



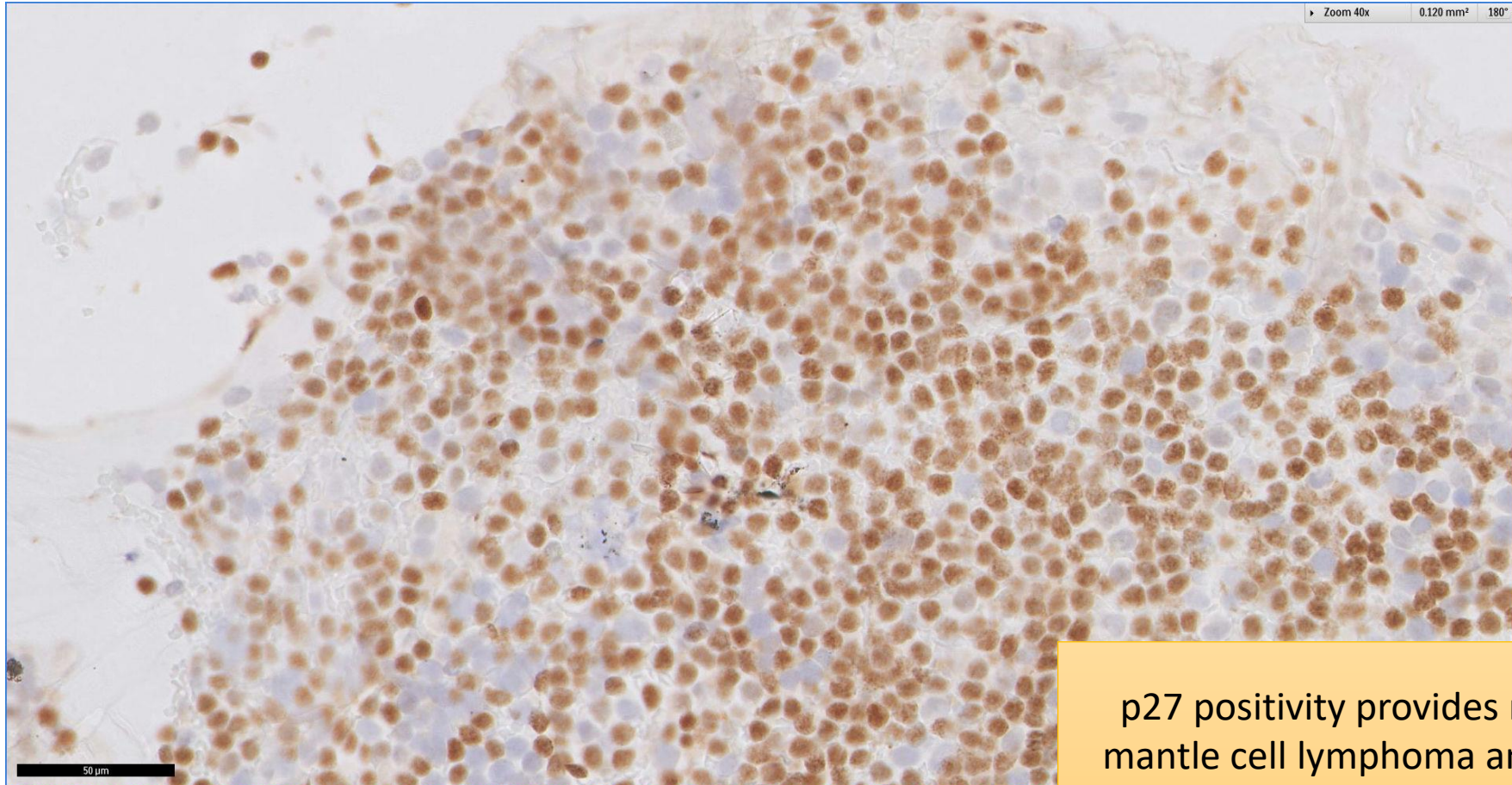
Diffuse infiltrate of small lymphocytes
effacing haematopoietic elements

SGH CASE 26: 17RE143 BONE MARROW CD20



Lymphocytic infiltrate is CD20 positive

SGH CASE 26: 17RE143 BONE MARROW P27



p27 positivity provides no support for mantle cell lymphoma and also indicate quiescence

SGH CASE 26: 17RE144 & 17RE143

- 17RE144 (Lymph node)
 - Chronic Lymphocytic Leukaemia In-transformation to Large B-cell Lymphoma (Richter Syndrome)
- 17RE143 (Bone marrow)
 - Involved by Chronic Lymphocytic Leukaemia