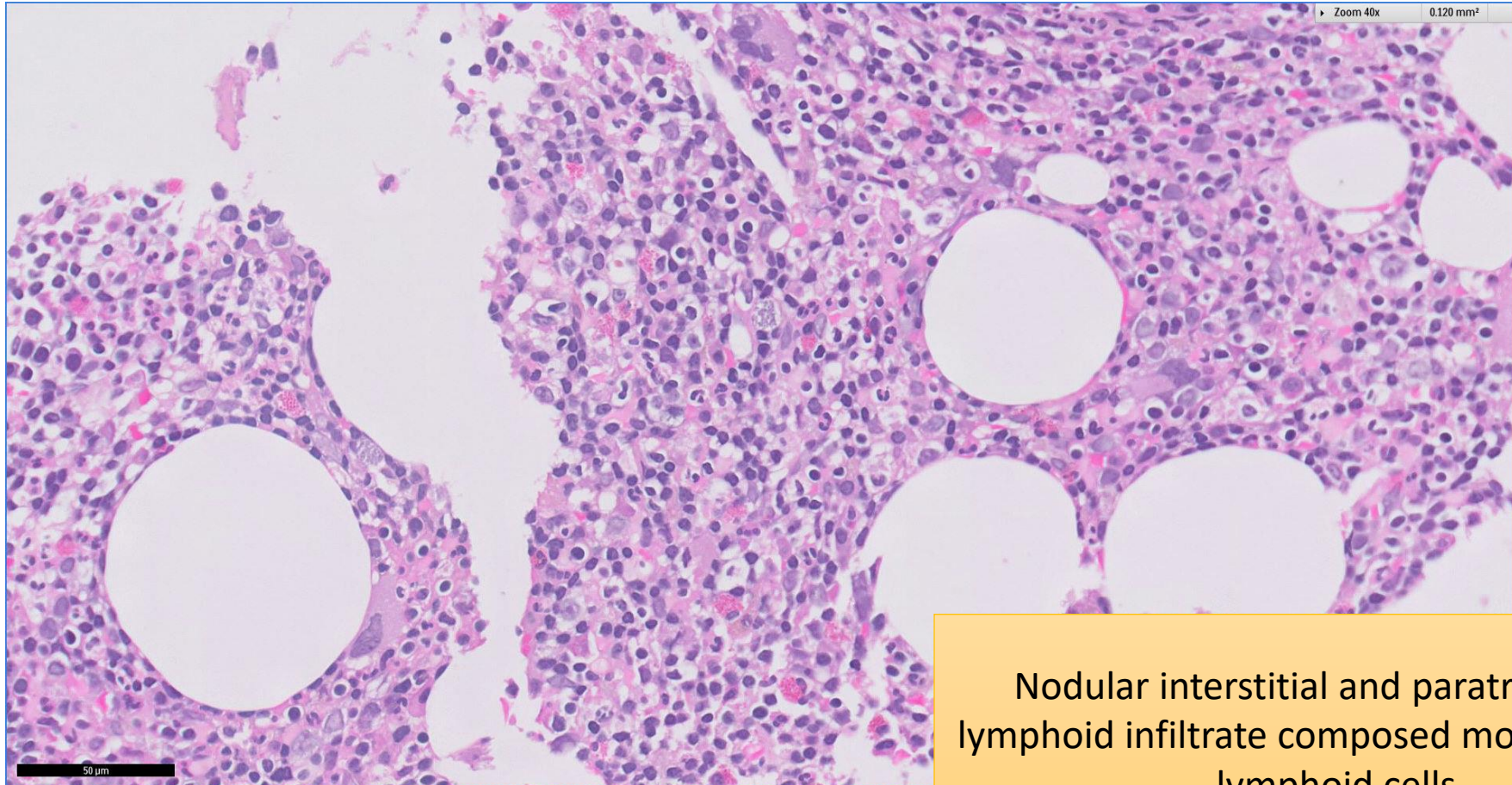


# SGH CASE 25: 17RE142

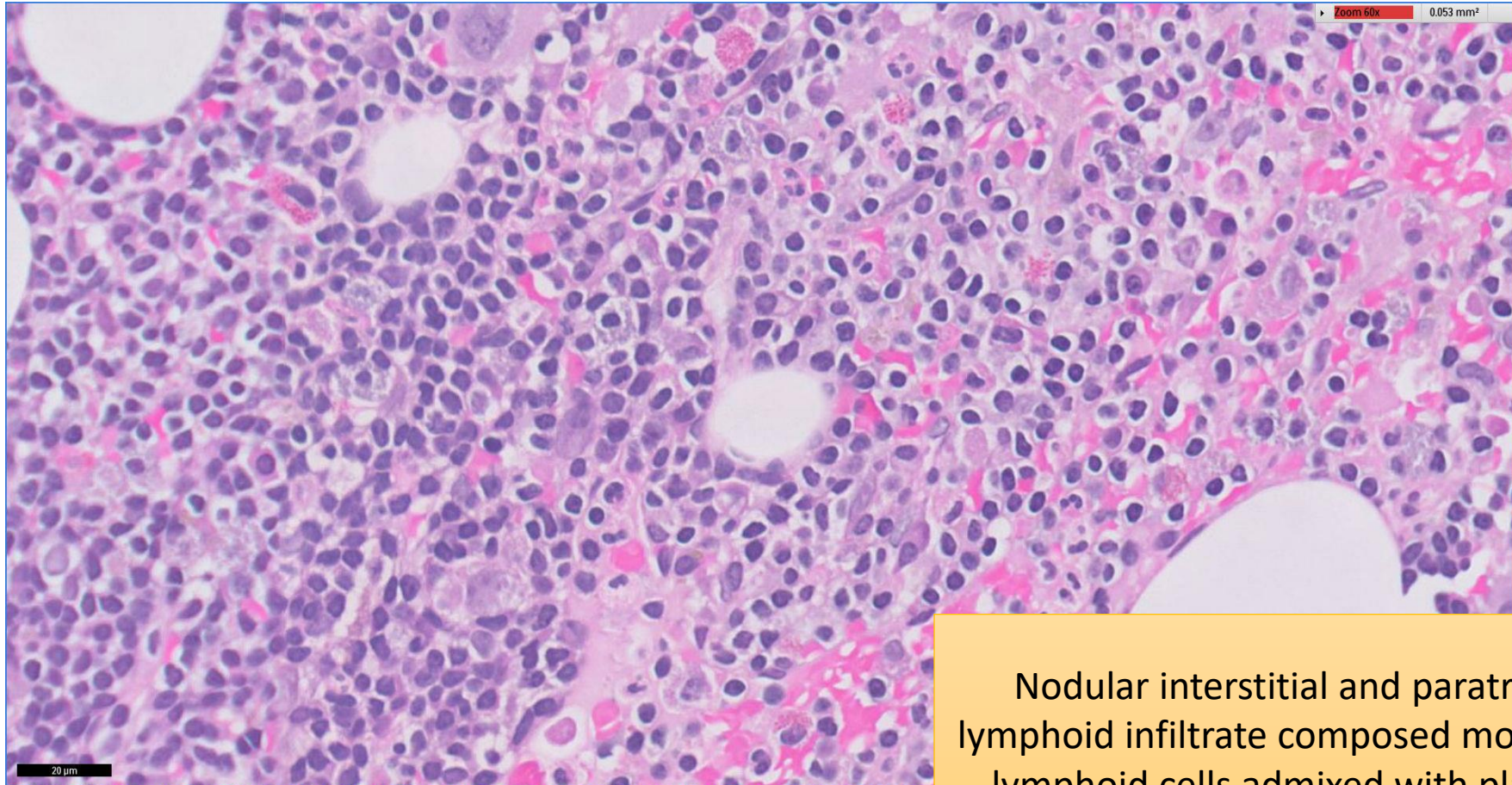
- Clinical History:
  - 70+ years old, Male. Anaemia (haemoglobin 8.7g/dL). Monoclonal kappa band on urine electrophoresis. Suspect myeloma.
- Specimen:
  - Bone marrow trephine biopsy.

# SGH CASE 25: 17RE142 H&E



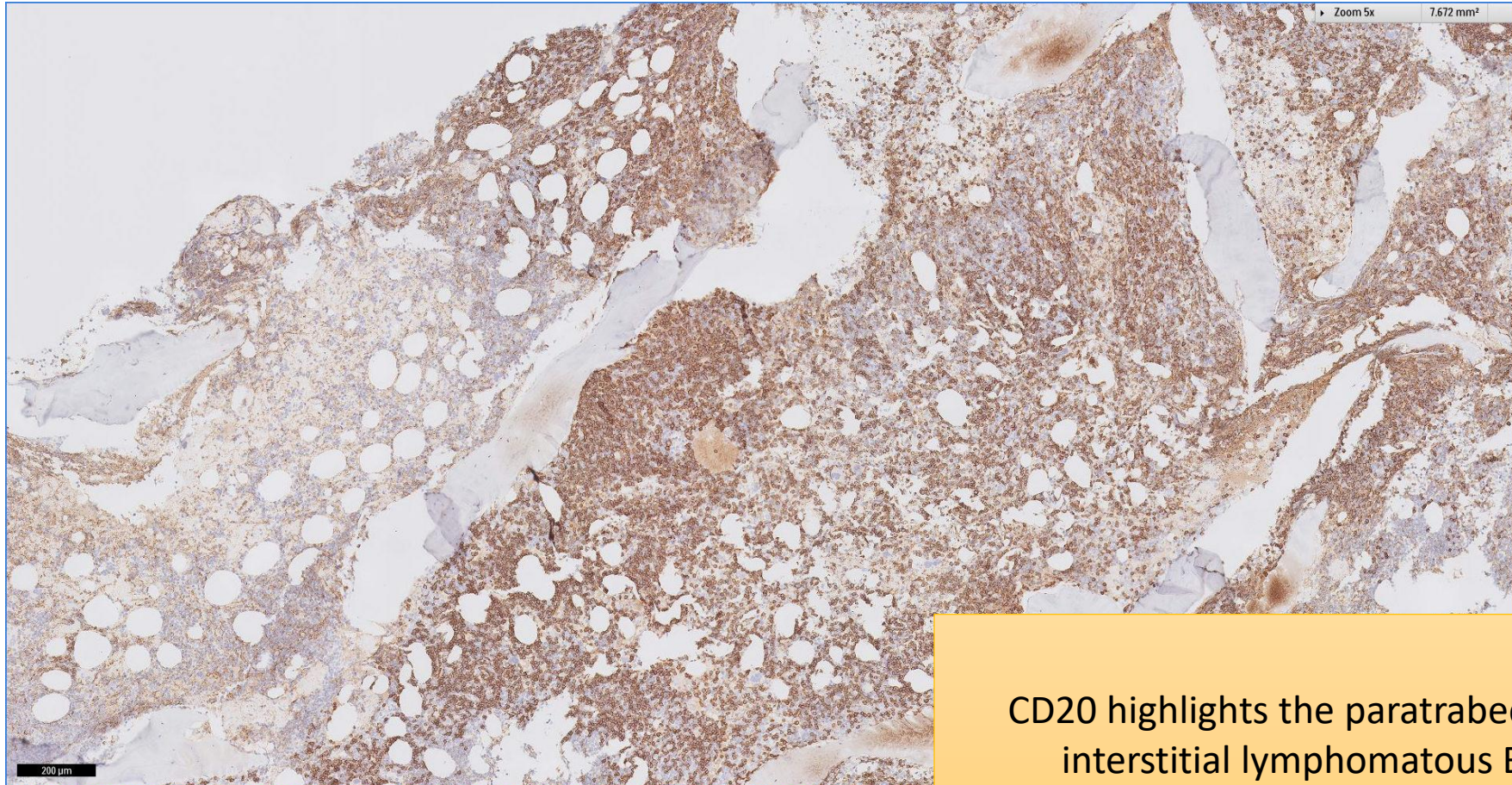
Nodular interstitial and paratrabeular lymphoid infiltrate composed mostly of small lymphoid cells

# SGH CASE 25: 17RE142 H&E



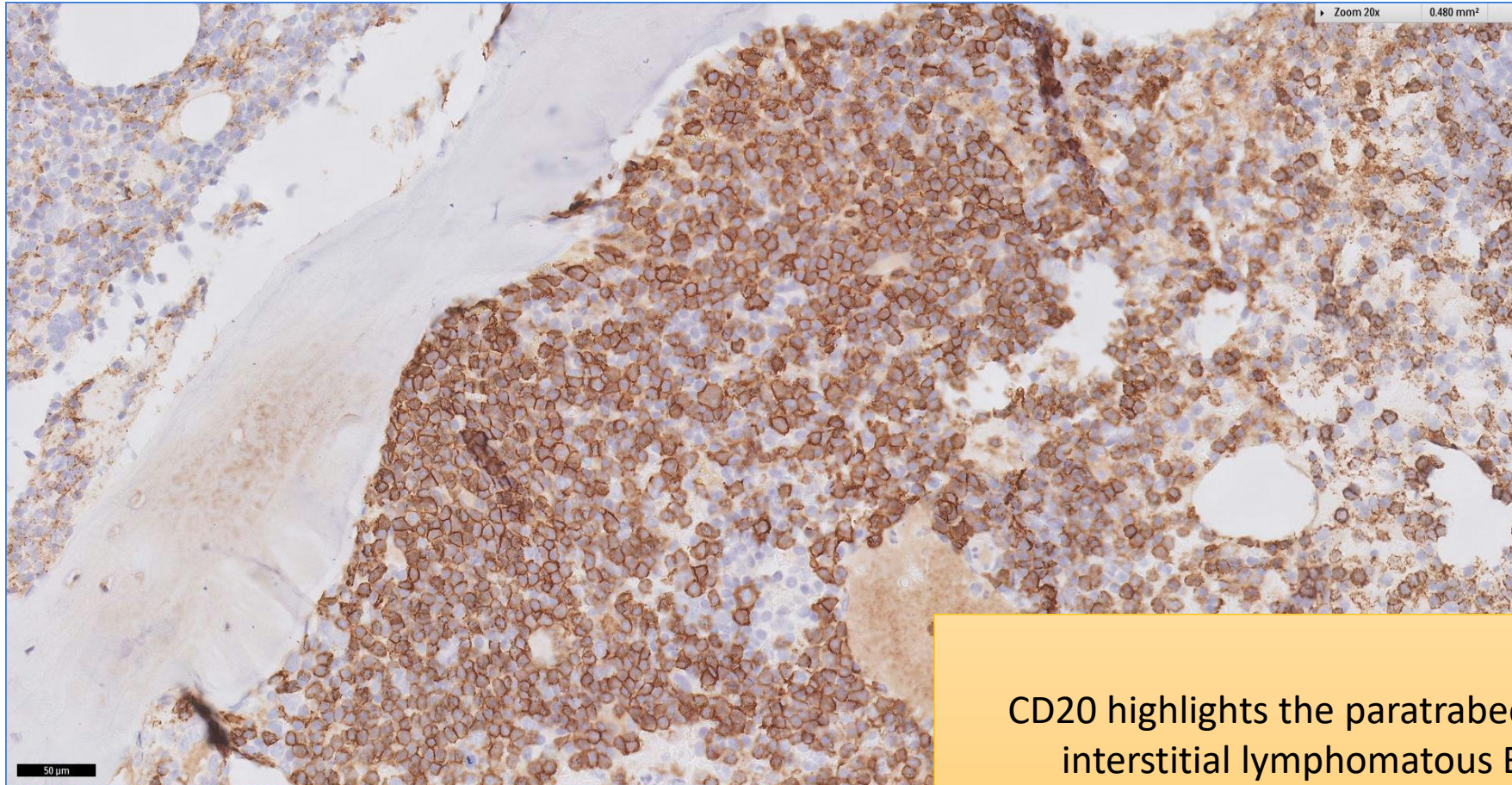
Nodular interstitial and paratrabecular lymphoid infiltrate composed mostly of small lymphoid cells admixed with plasma cells

# SGH CASE 25: 17RE142 CD20



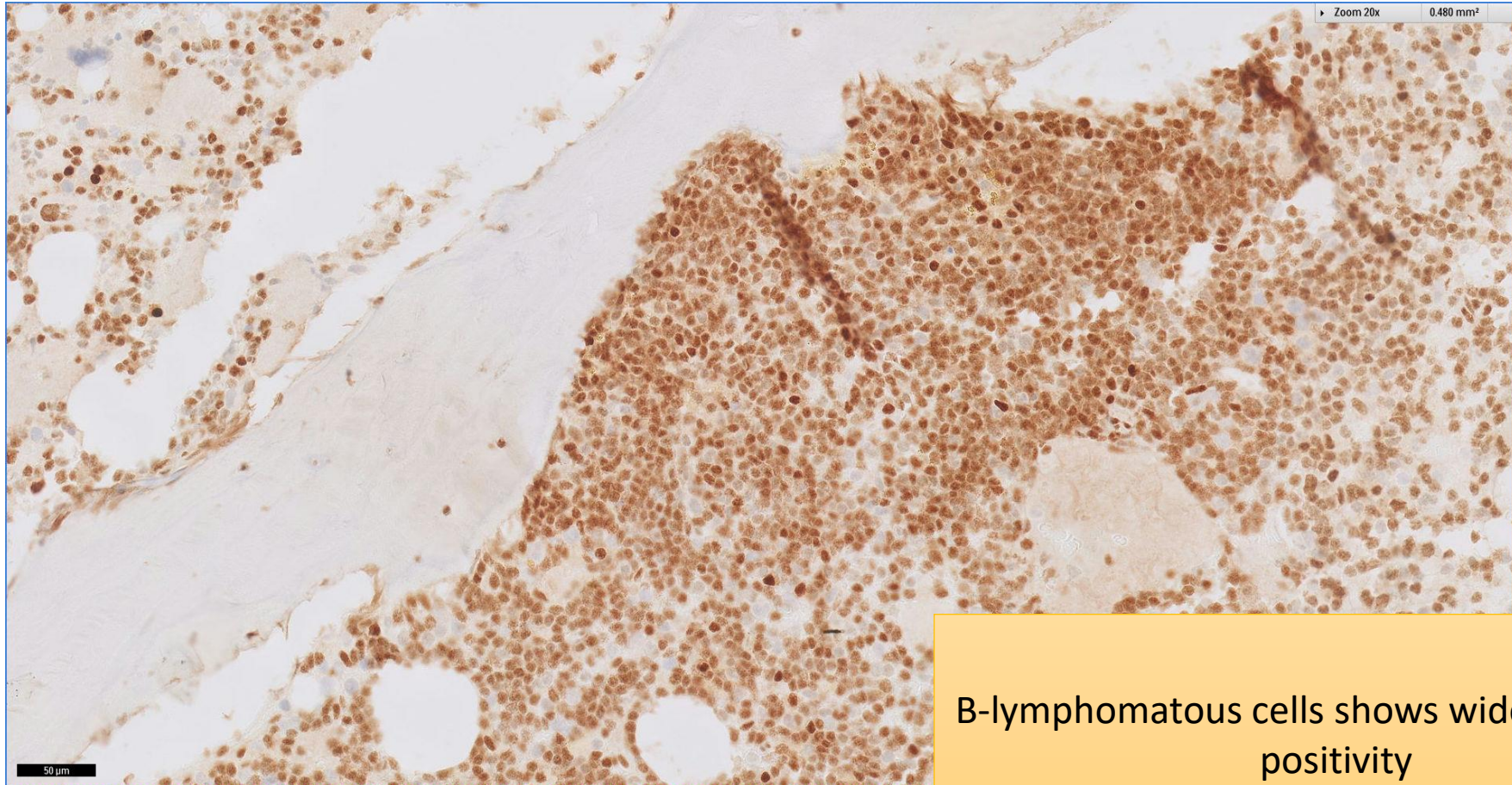
CD20 highlights the paratrabecular and interstitial lymphomatous B-cells

# SGH CASE 25: 17RE142 CD20



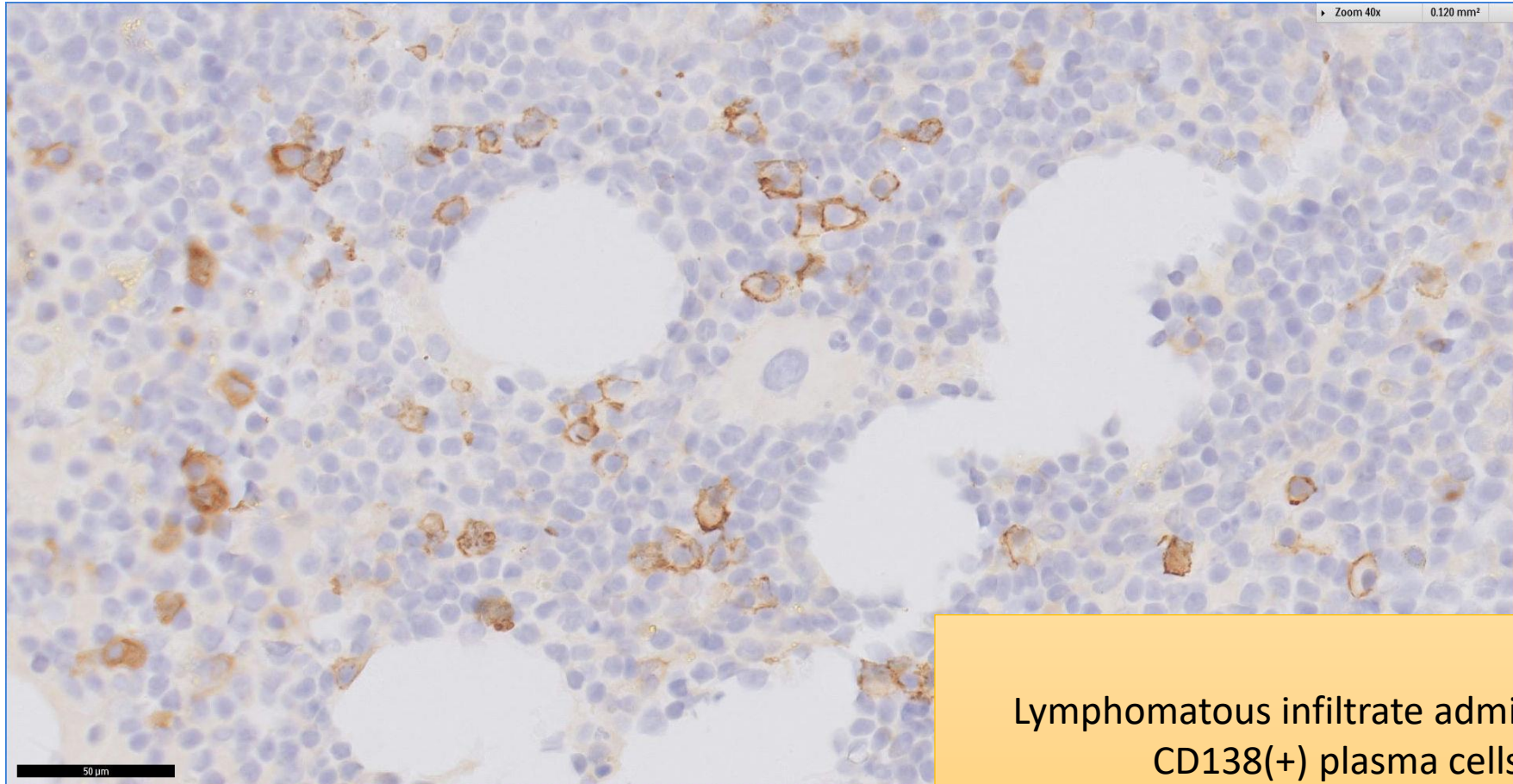
CD20 highlights the paratrabecular and interstitial lymphomatous B-cells

# SGH CASE 25: 17RE142 P27



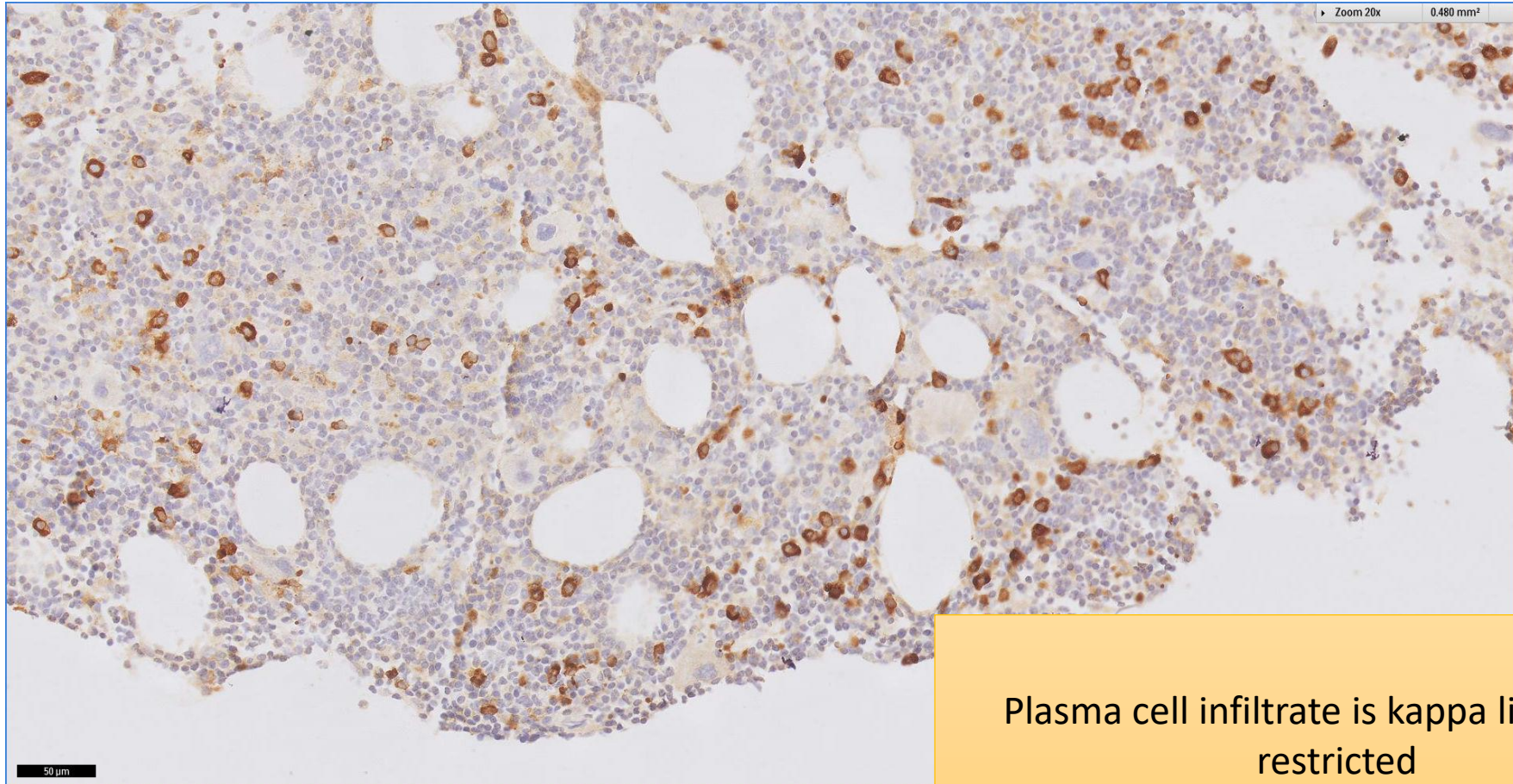
B-lymphomatous cells shows widespread p27 positivity

# SGH CASE 25: 17RE142 CD138



Lymphomatous infiltrate admixed with  
CD138(+) plasma cells

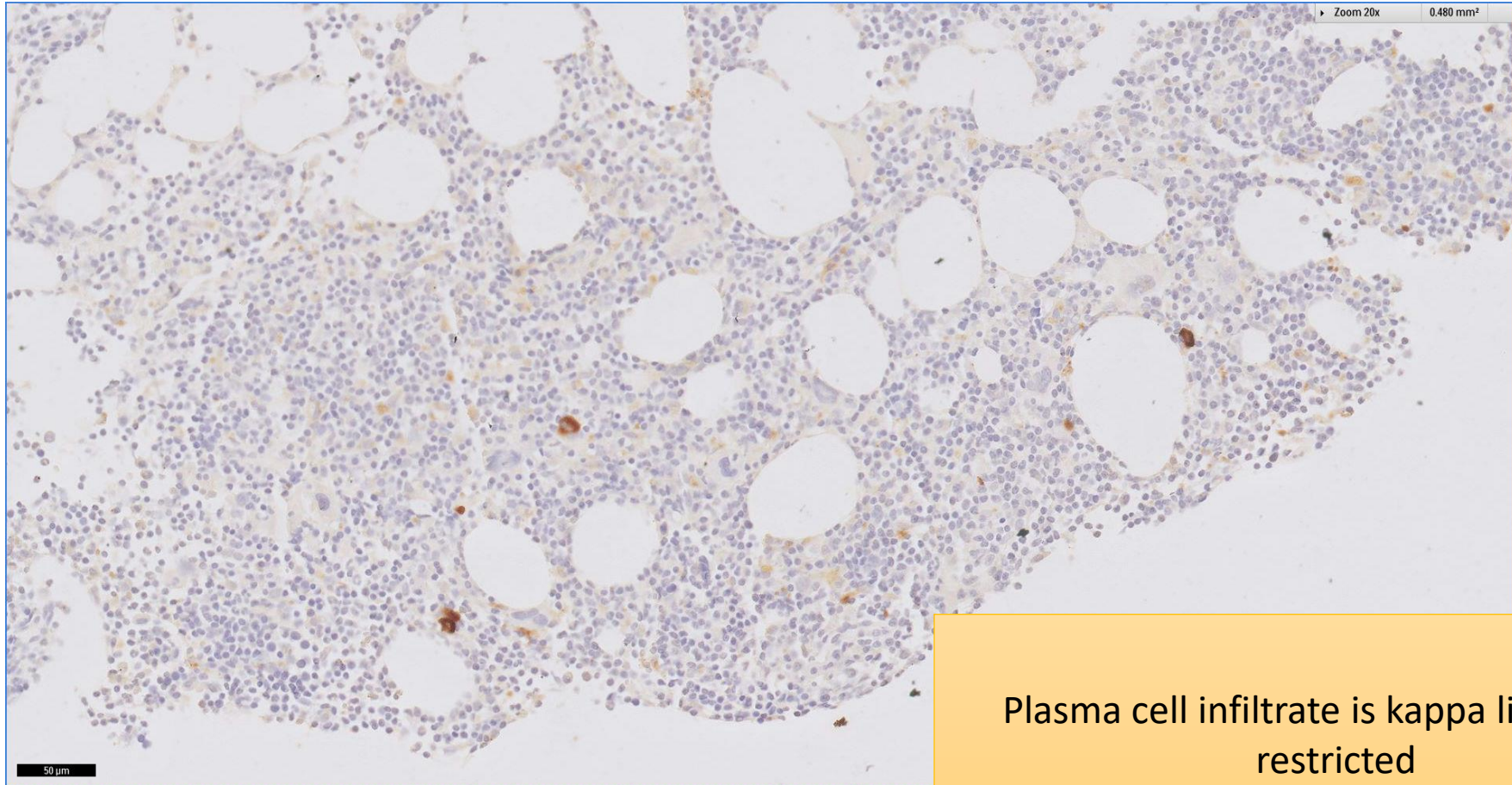
# SGH CASE 25: 17RE142 KAPPA-ISH



Plasma cell infiltrate is kappa light chain restricted

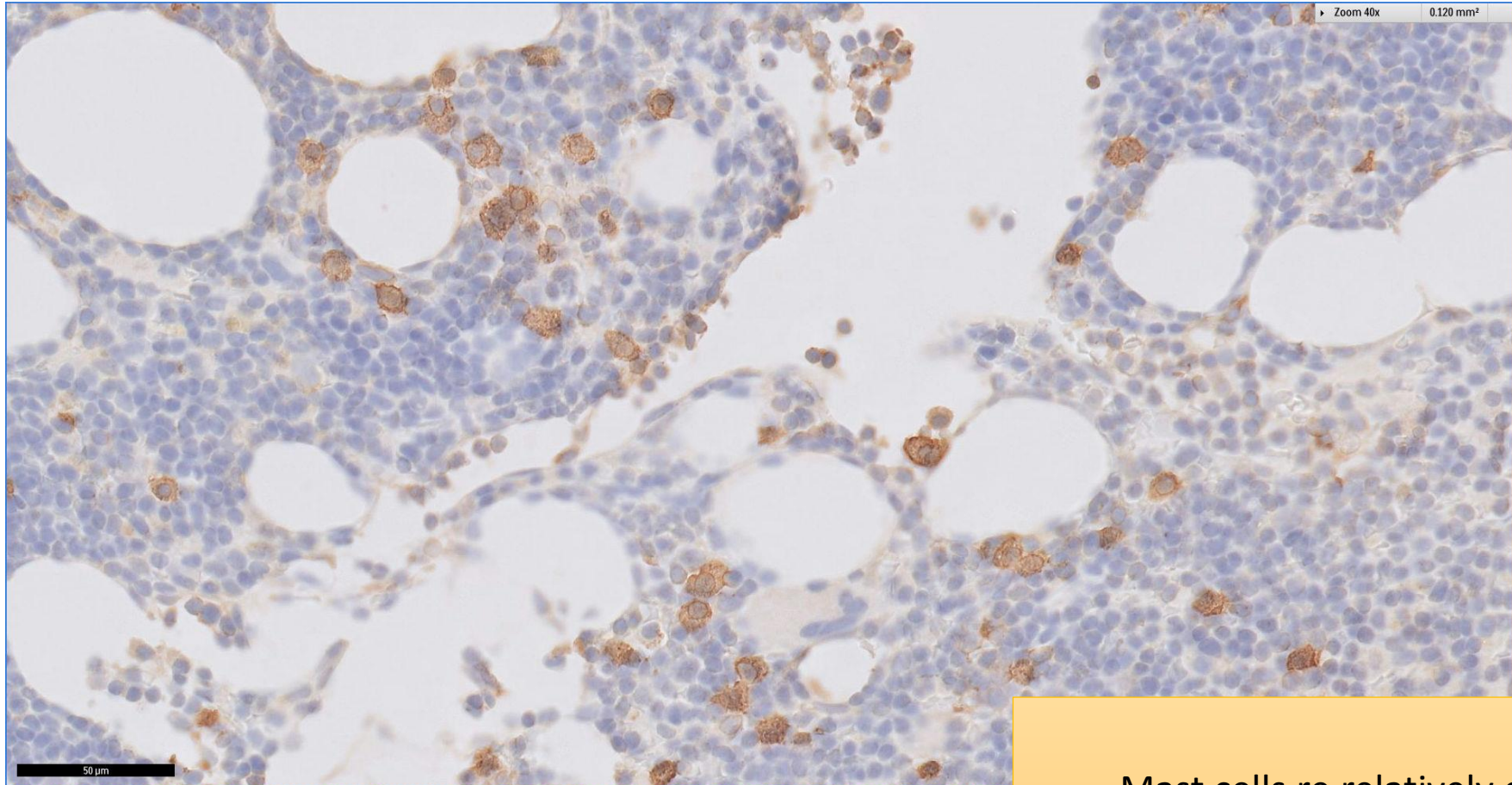


# SGH CASE 25: 17RE142 LAMBDA-ISH



Plasma cell infiltrate is kappa light chain restricted

# SGH CASE 25: 17RE142 MAST CELL TRYPTASE



Mast cells re relatively conspicuous

# SGH CASE 25: 17RE142

- Diagnosis
  - Lymphoplasmacytic Lymphoma