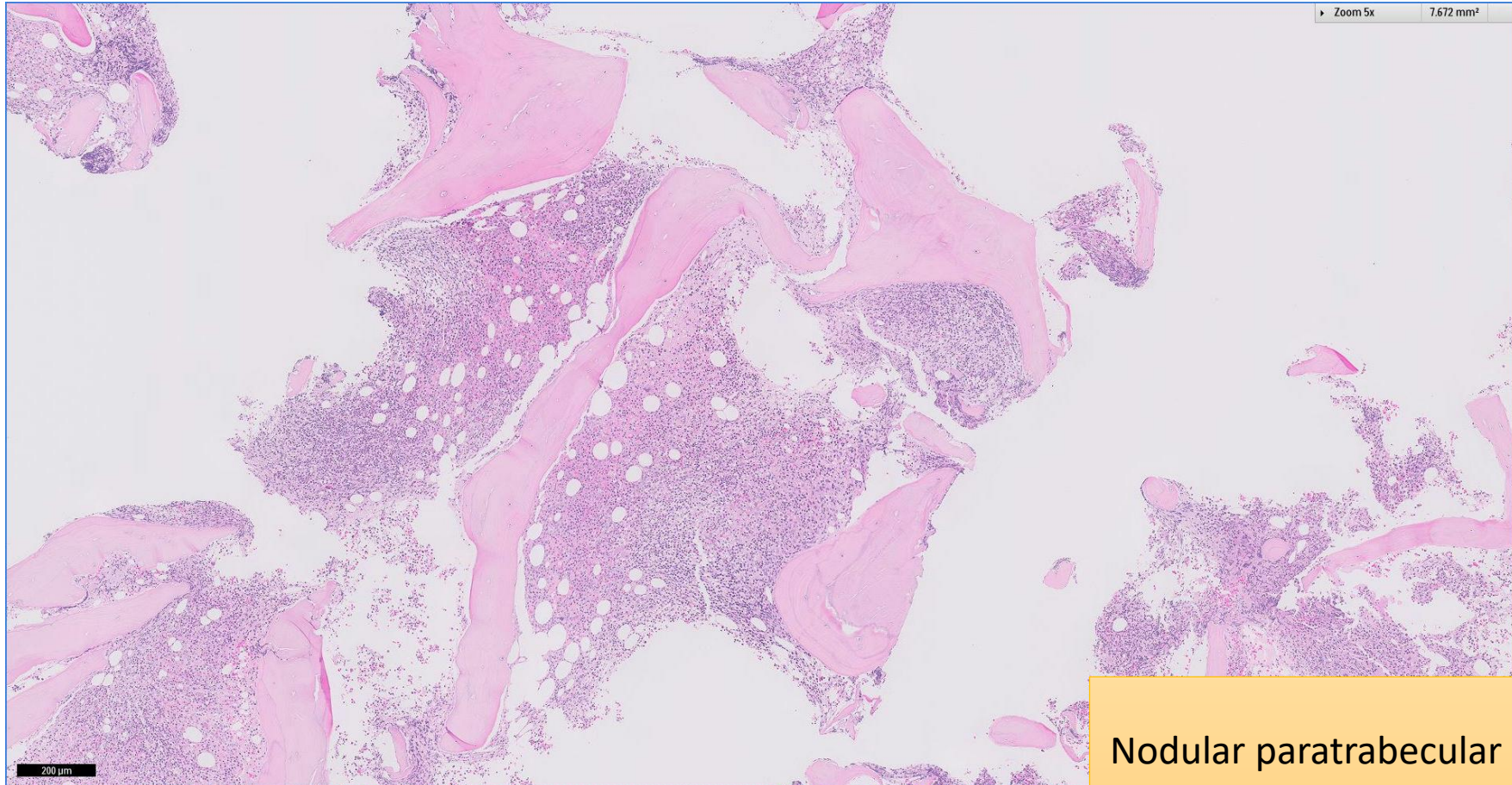


SGH CASE 24: 17RE141

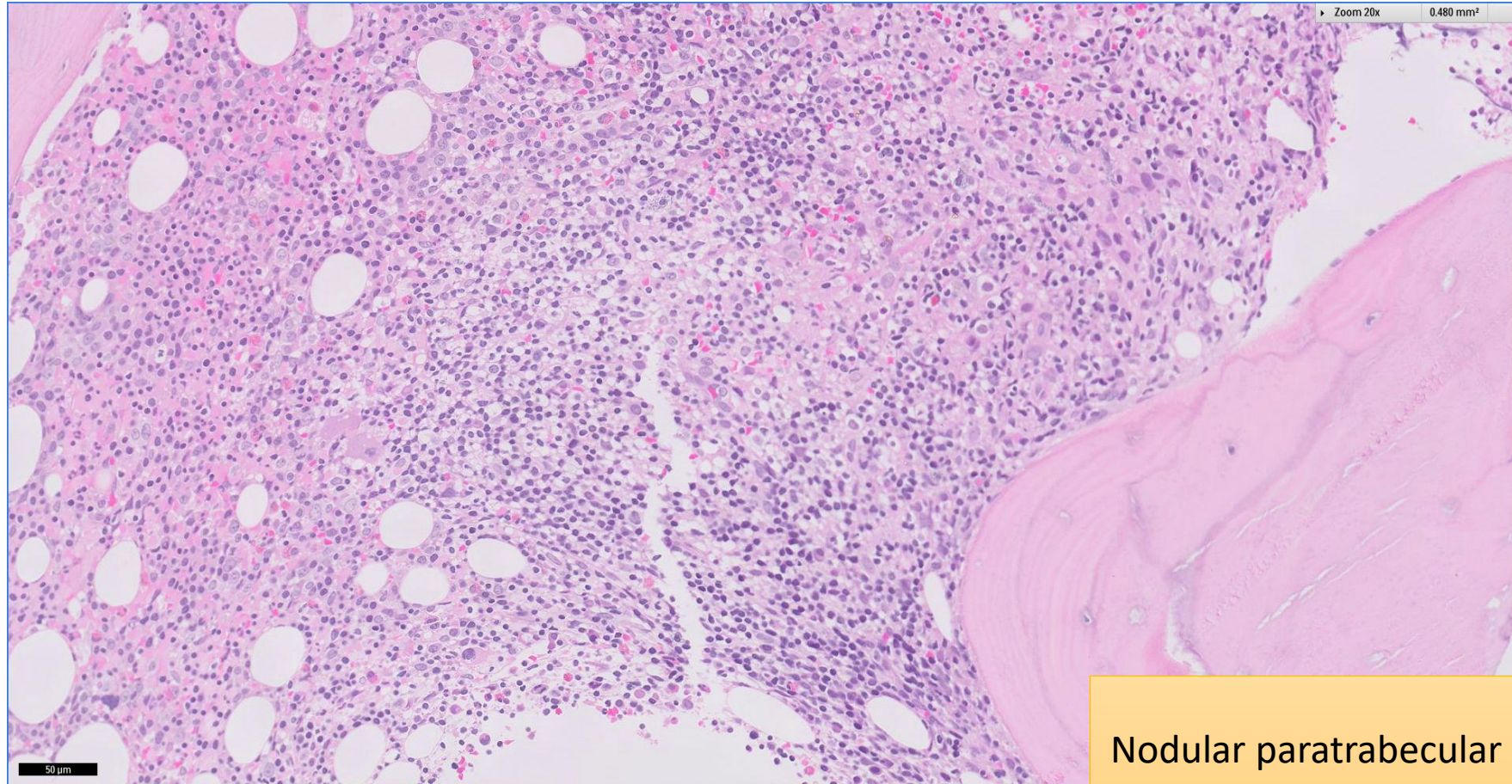
- Clinical History:
 - 60+ (late 60s) years old, Male. Mild lymphocytosis ($2.28 \times 10^9/L$). IgM Kappa serum paraprotein.
- Specimen:
 - Bone marrow trephine biopsy.

SGH CASE 24: 17RE141 H&E



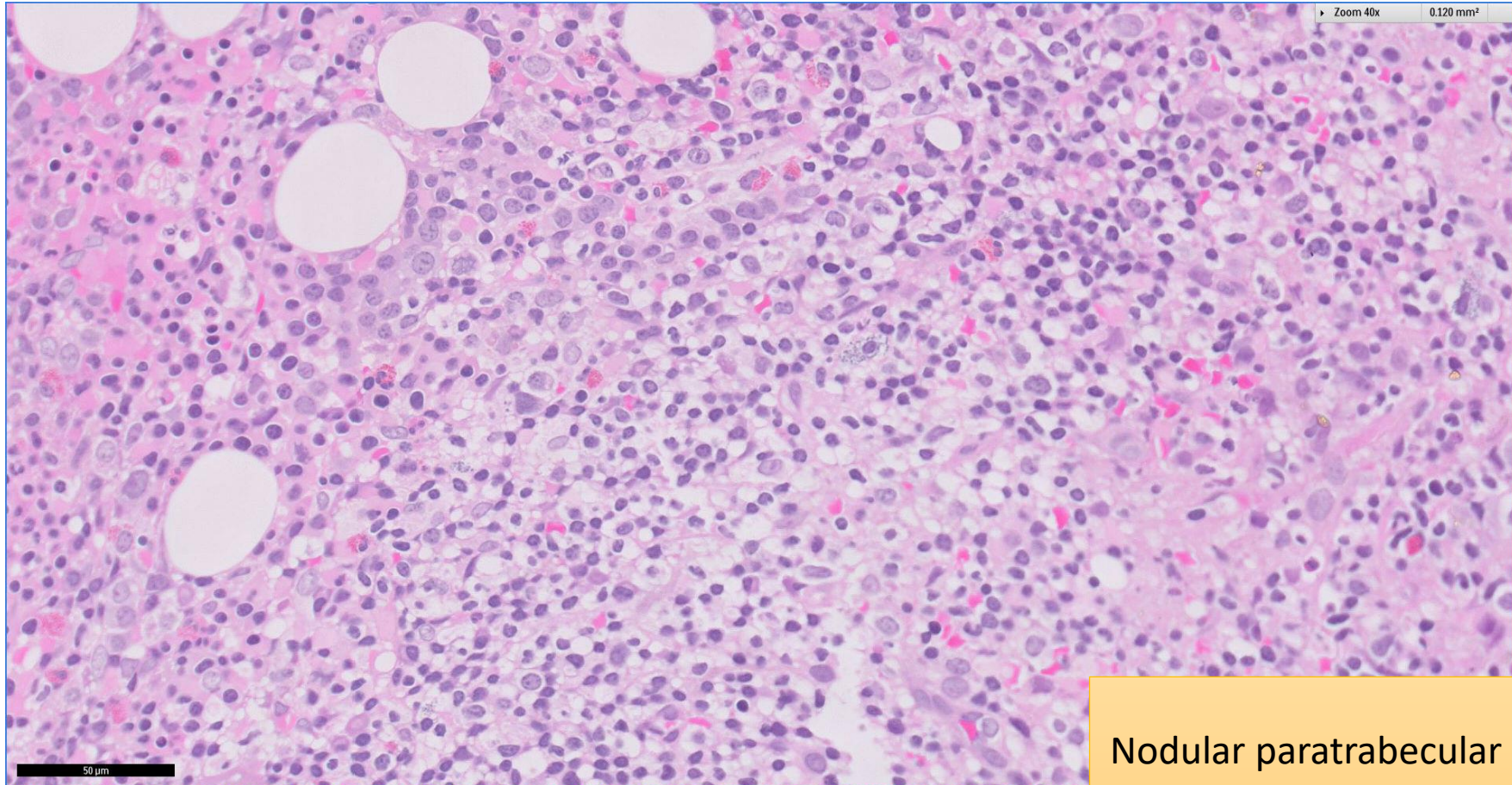
**Nodular paratrabeular and interstitial
small lymphocytic infiltrate**

SGH CASE 24: 17RE141 H&E



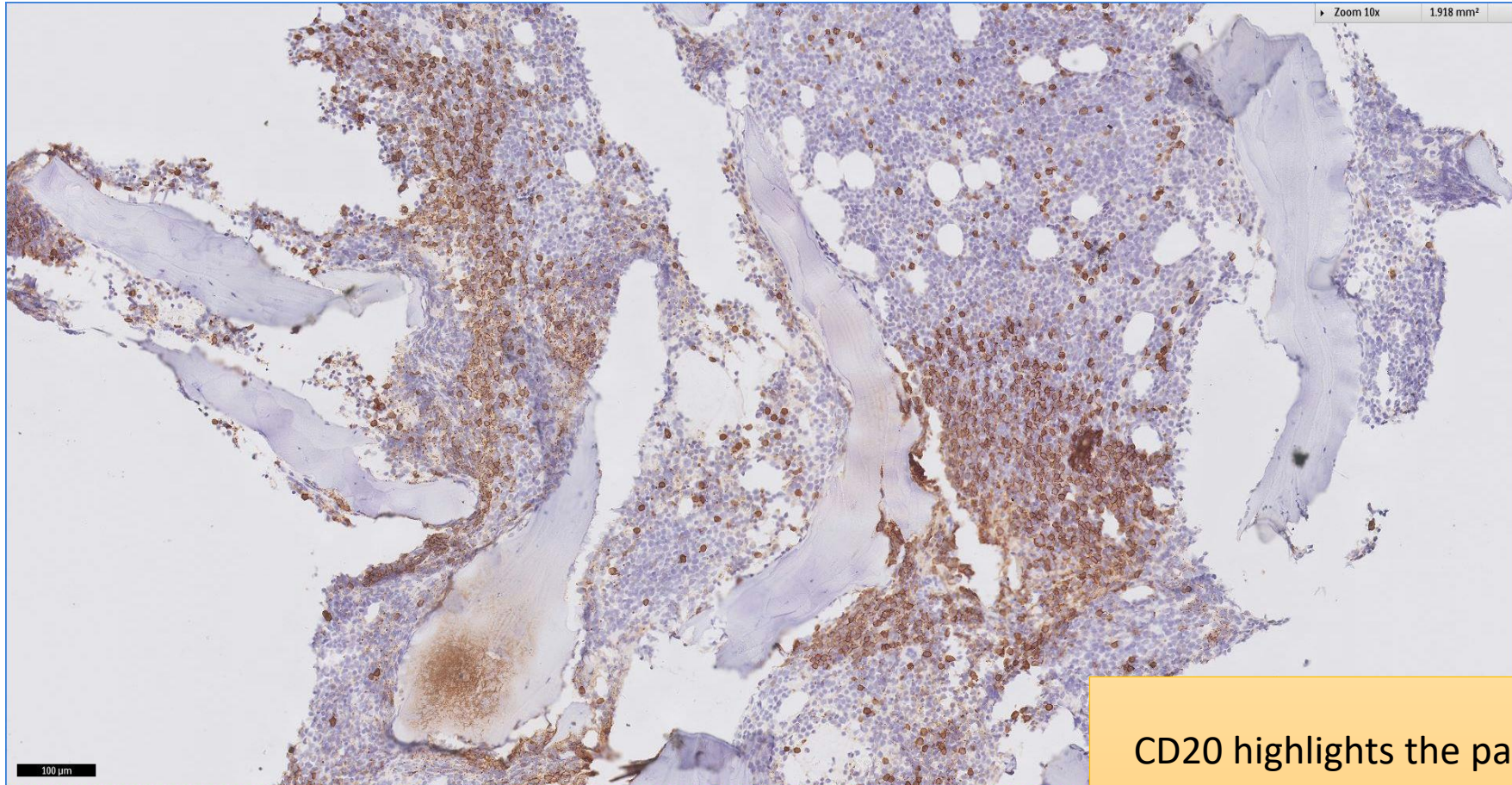
**Nodular paratrabeular and interstitial
small lymphocytic infiltrate**

SGH CASE 24: 17RE141 H&E



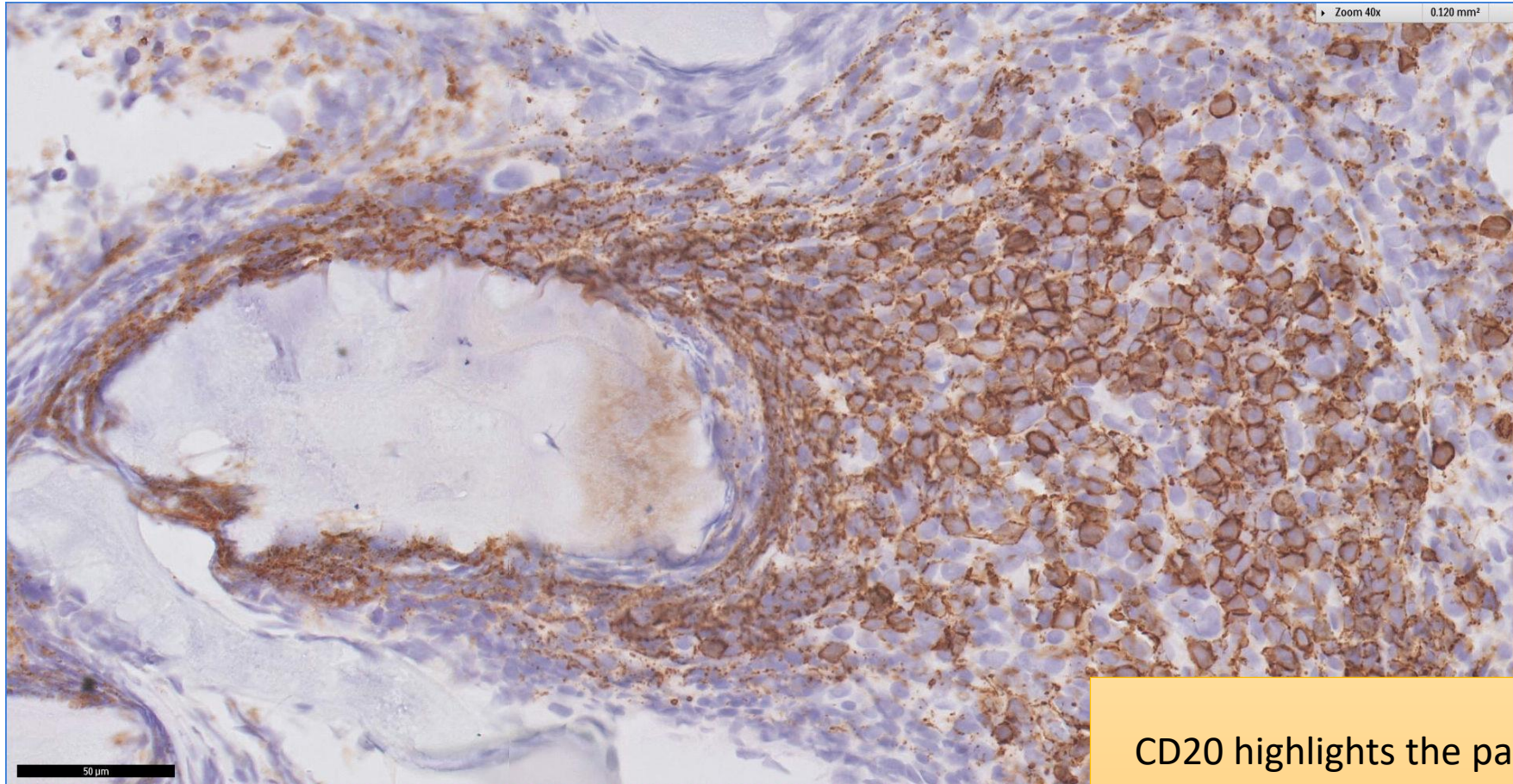
**Nodular paratrabeular and interstitial
small lymphocytic infiltrate**

SGH CASE 24: 17RE141 CD20



CD20 highlights the paratrabecular and interstitial lymphoid infiltrate

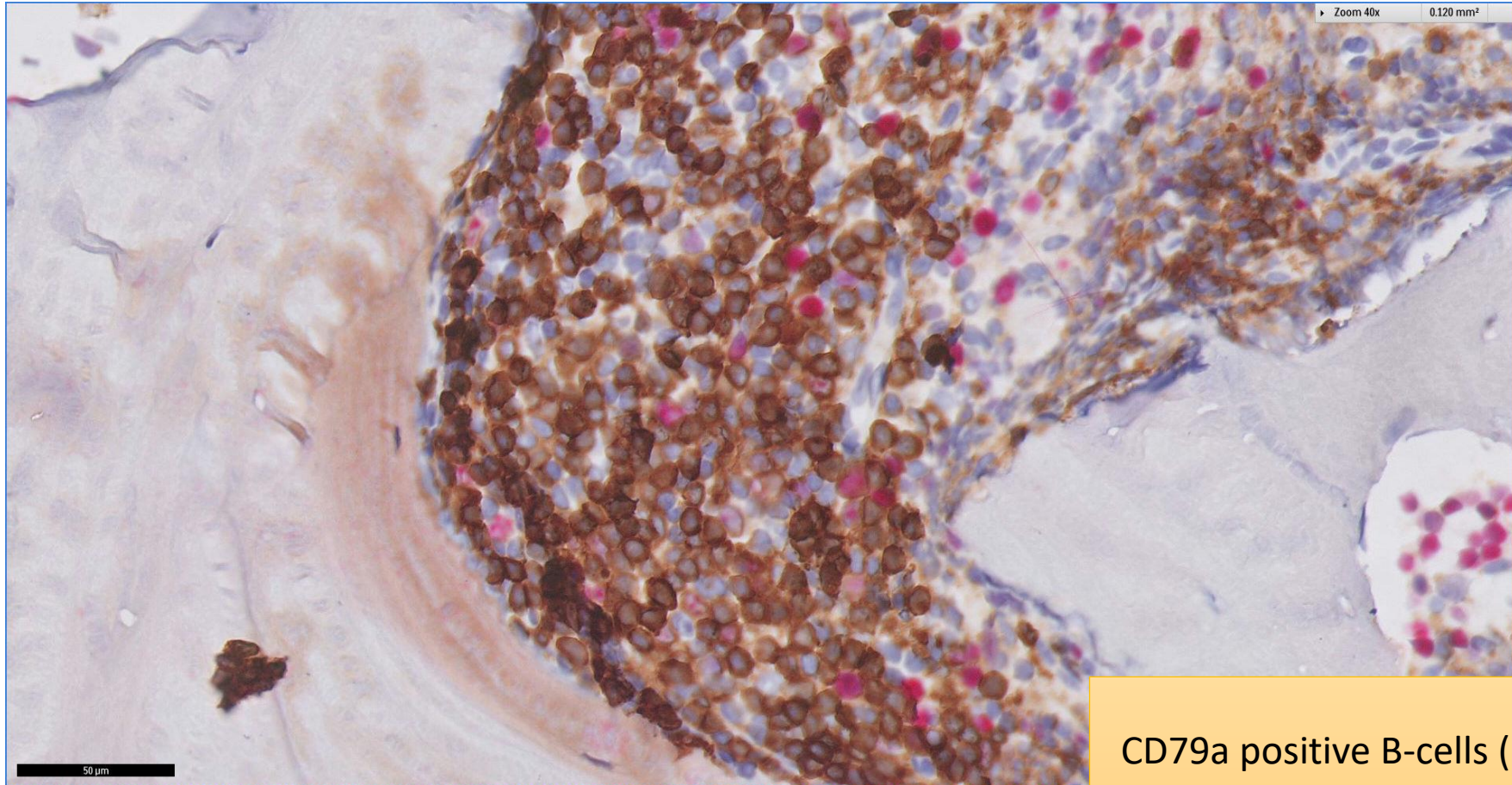
SGH CASE 24: 17RE141 CD20



CD20 highlights the paratrabeular
and interstitial lymphoid infiltrate

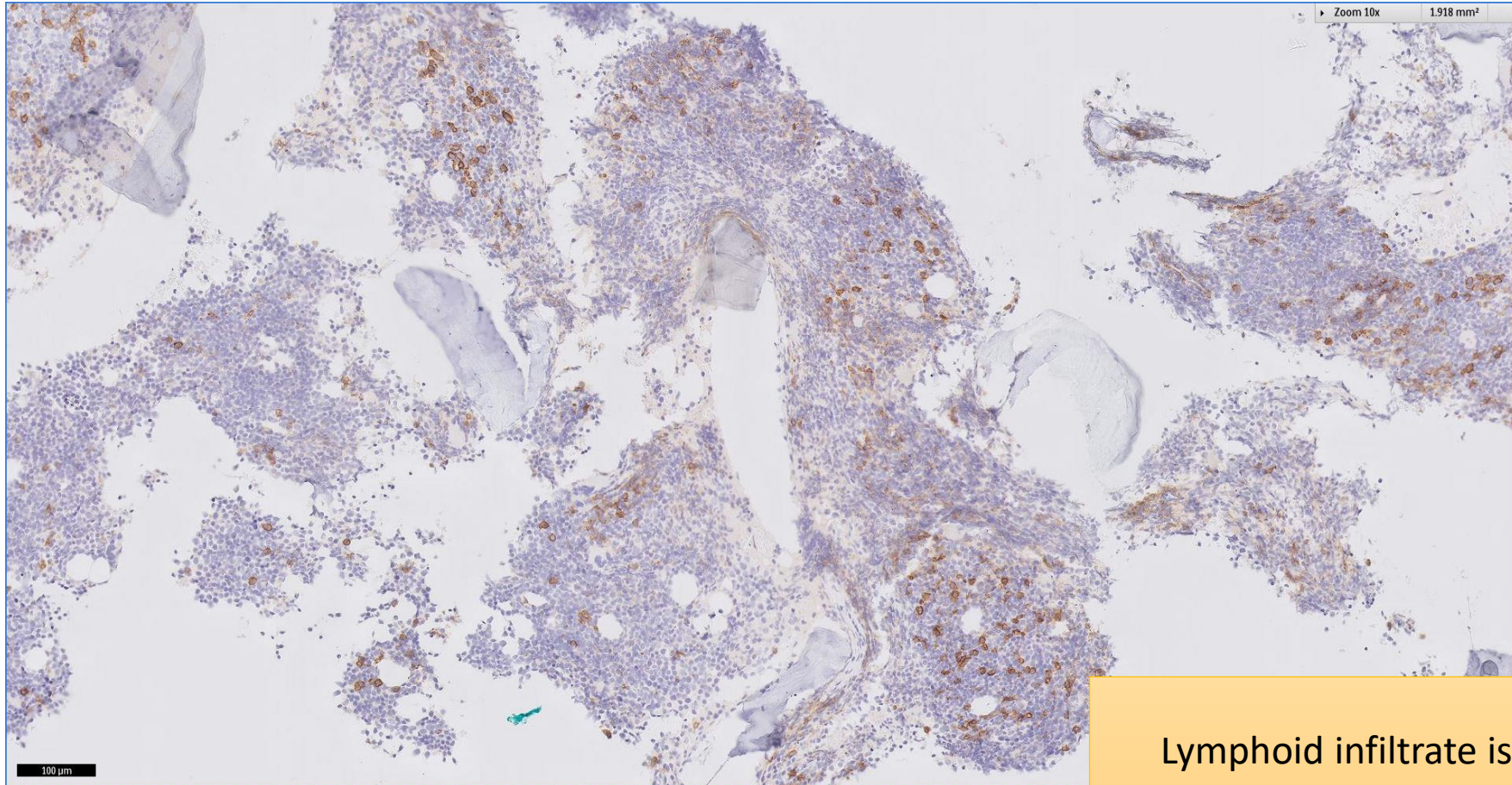
SGH CASE 24: 17RE141

CD79A(BROWN) KI67(RED)



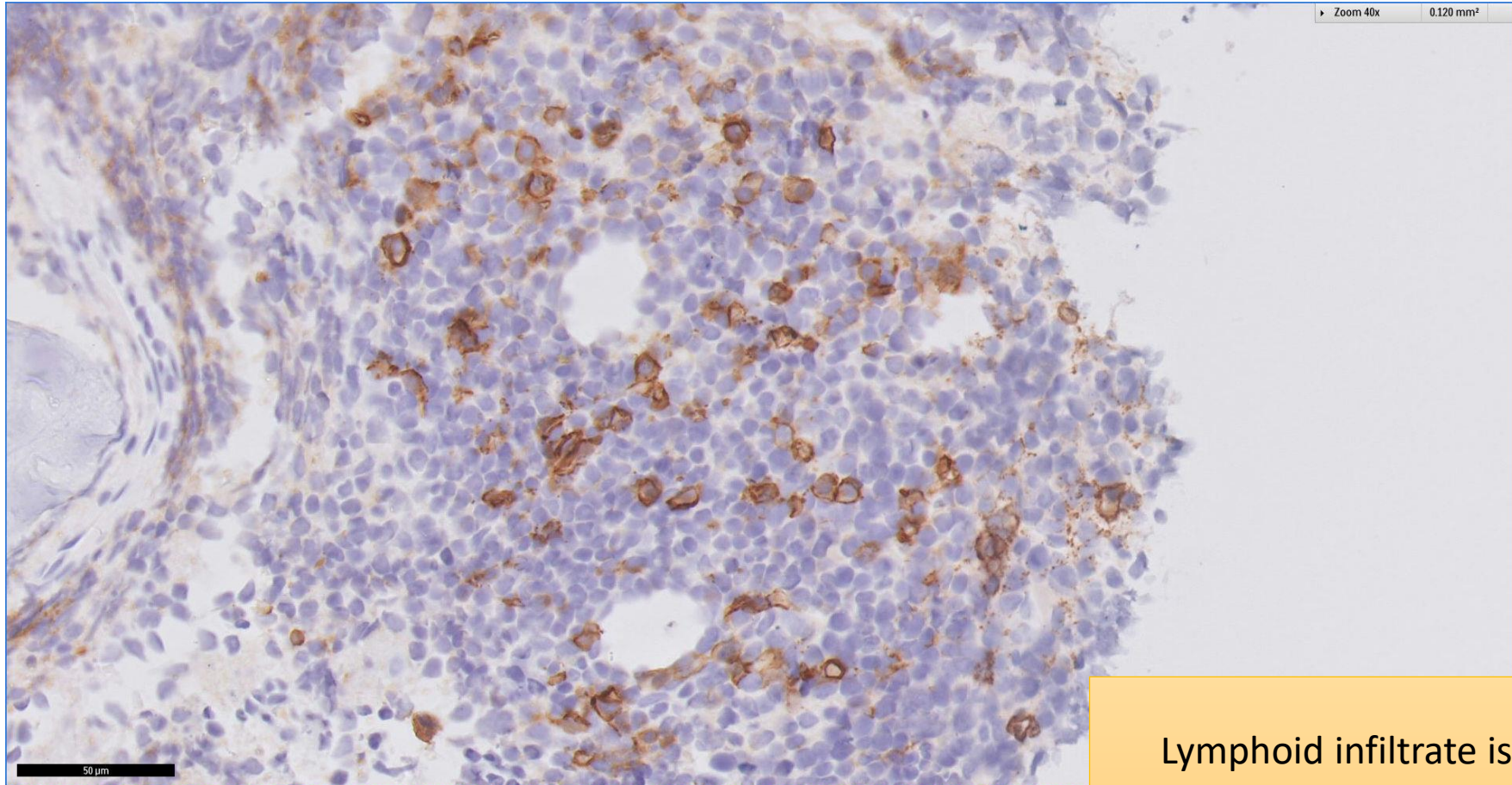
CD79a positive B-cells (brown) show low proliferation fraction (Ki67 red)

SGH CASE 24: 17RE141 CD138



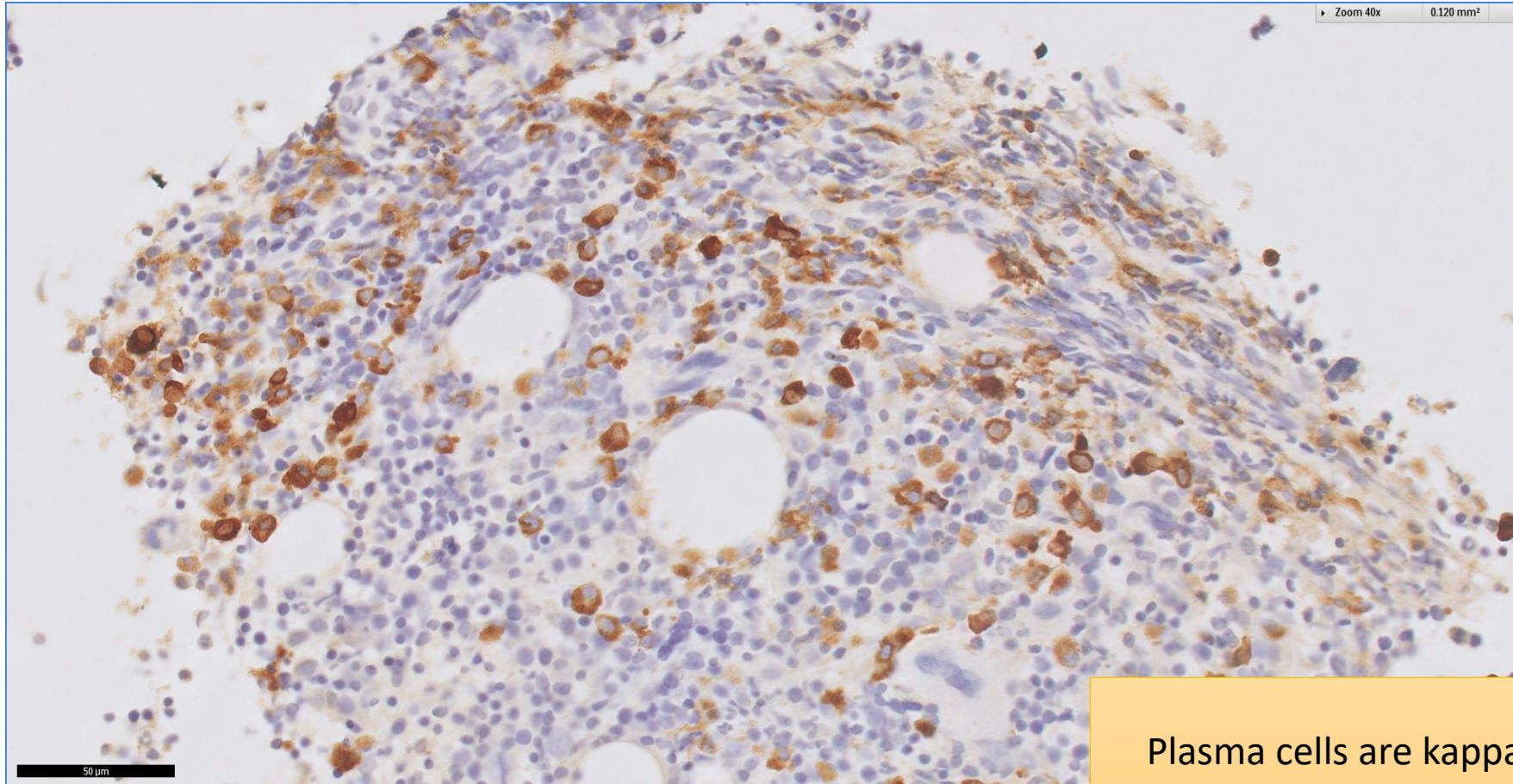
Lymphoid infiltrate is intimately admixed with CD138(+) plasma cells

SGH CASE 24: 17RE141 CD138



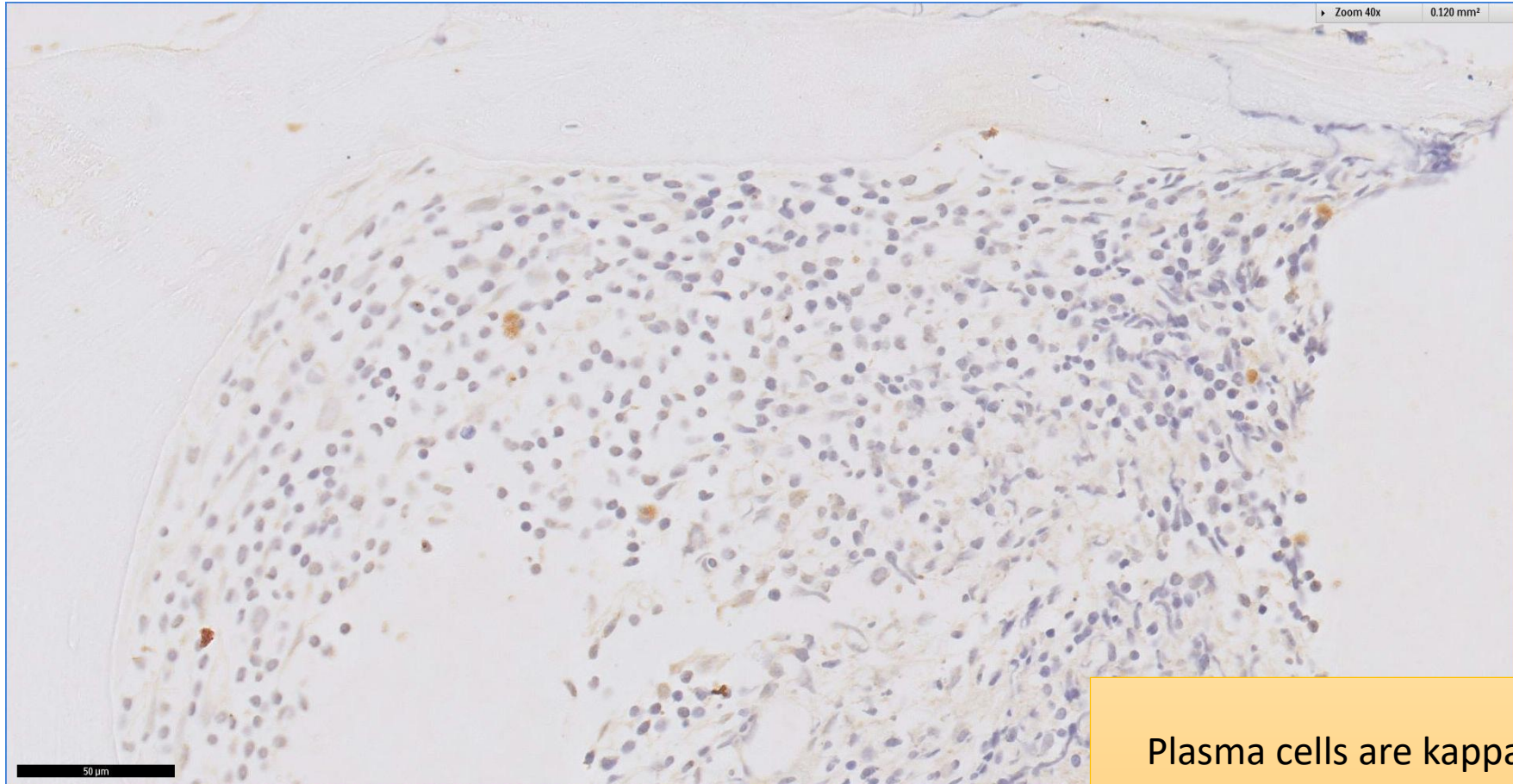
Lymphoid infiltrate is intimately admixed with CD138(+) plasma cells

SGH CASE 24: 17RE141 KAPPA-ISH



Plasma cells are kappa light chain restricted

SGH CASE 24: 17RE141 LAMBDA-ISH



Plasma cells are kappa light chain restricted

SGH CASE 24: 17RE141

- Diagnosis
 - Lymphoplasmacytic Lymphoma
- Lymphoid infiltrate is also negative for CD5 and cyclin D1. Plasma cells are also negative for CD56.