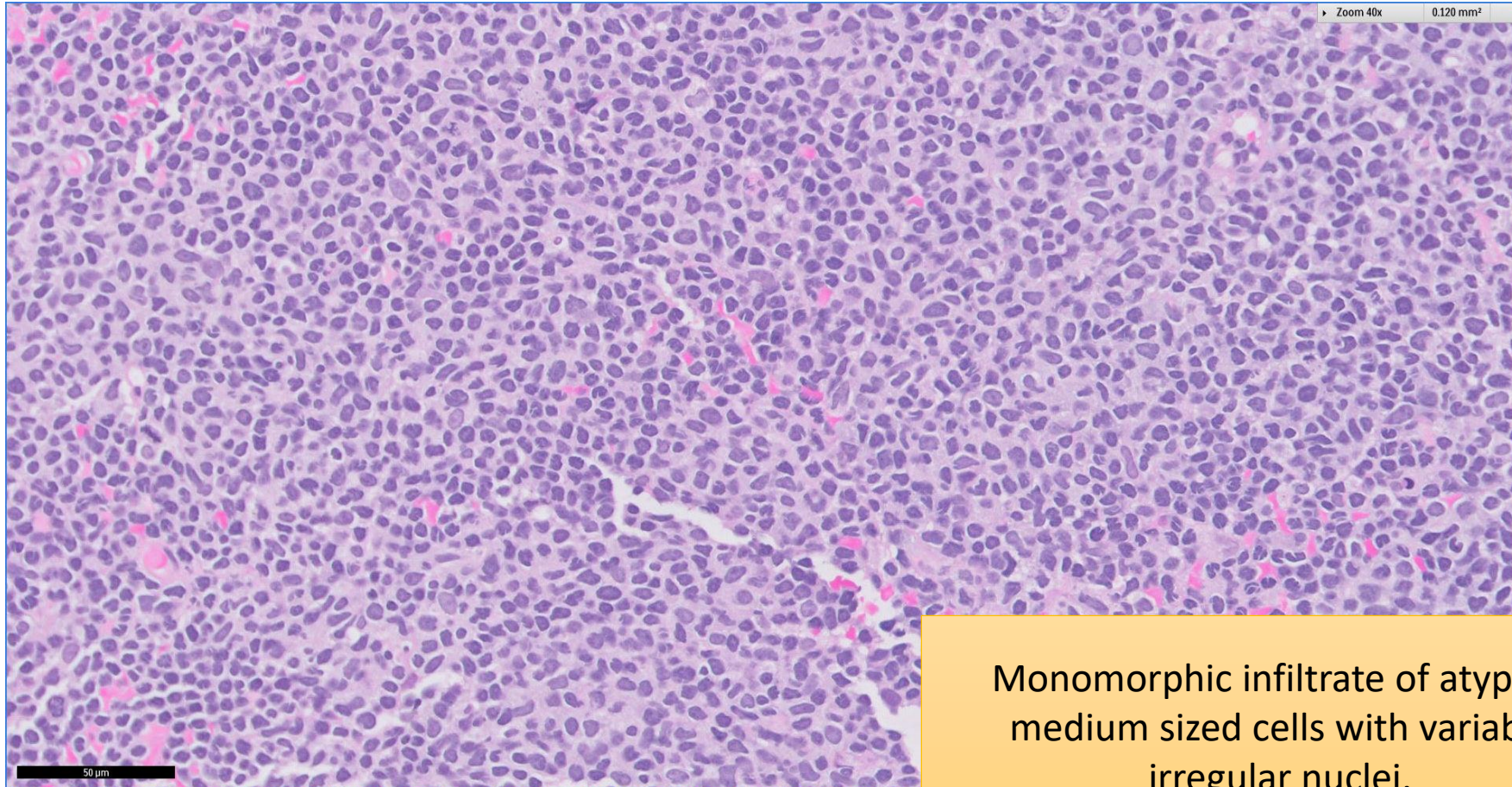


# SGH CASE 21: 17RE130

- Clinical History:
  - 50+ years old. Male. Nodules in arm and thigh. Previously treated with chemotherapy for lymphoma.
- Specimen:
  - Right arm nodule core biopsy.

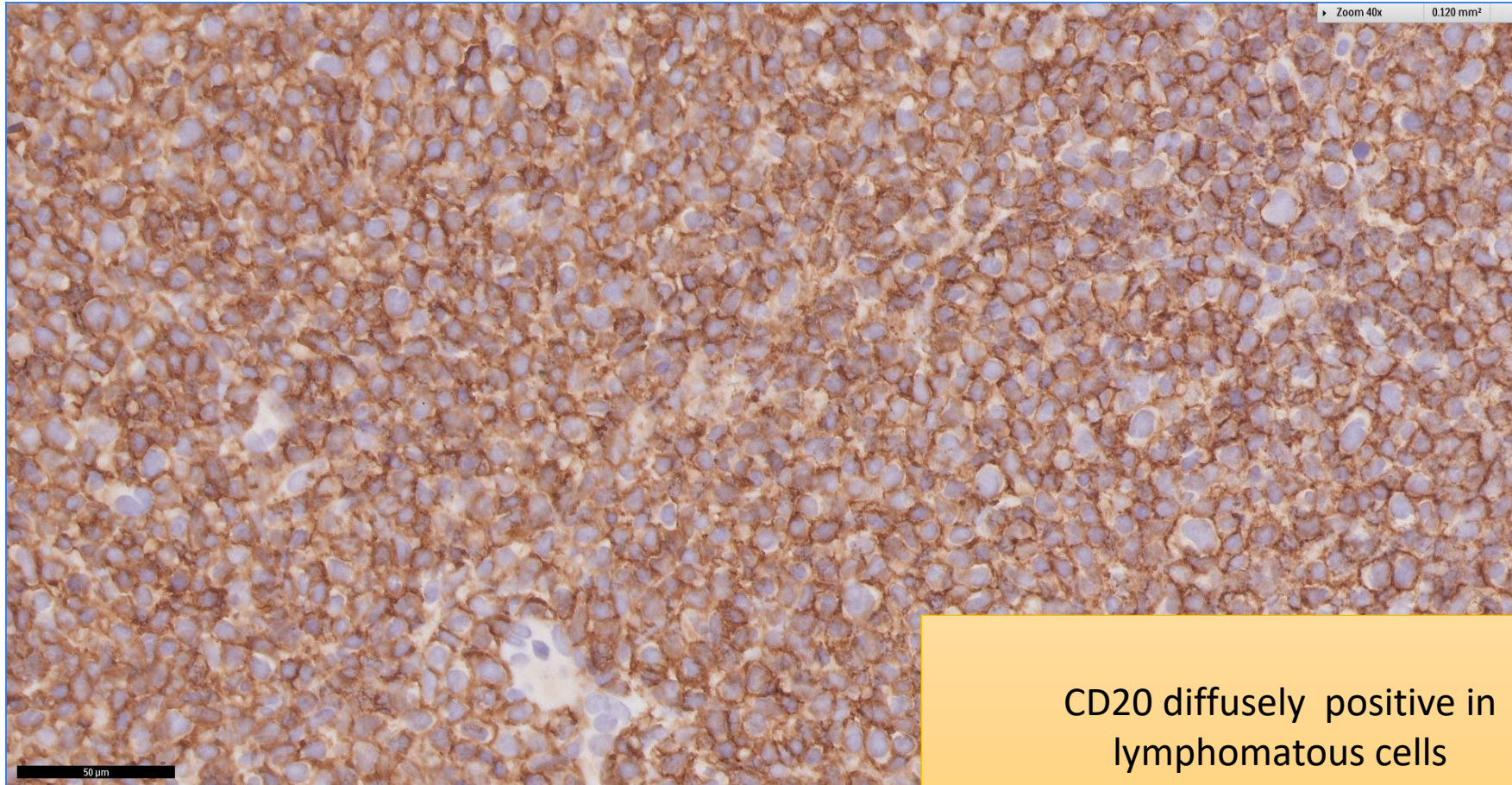
# SGH CASE 21: 17RE130 H&E



Monomorphic infiltrate of atypical medium sized cells with variably irregular nuclei.



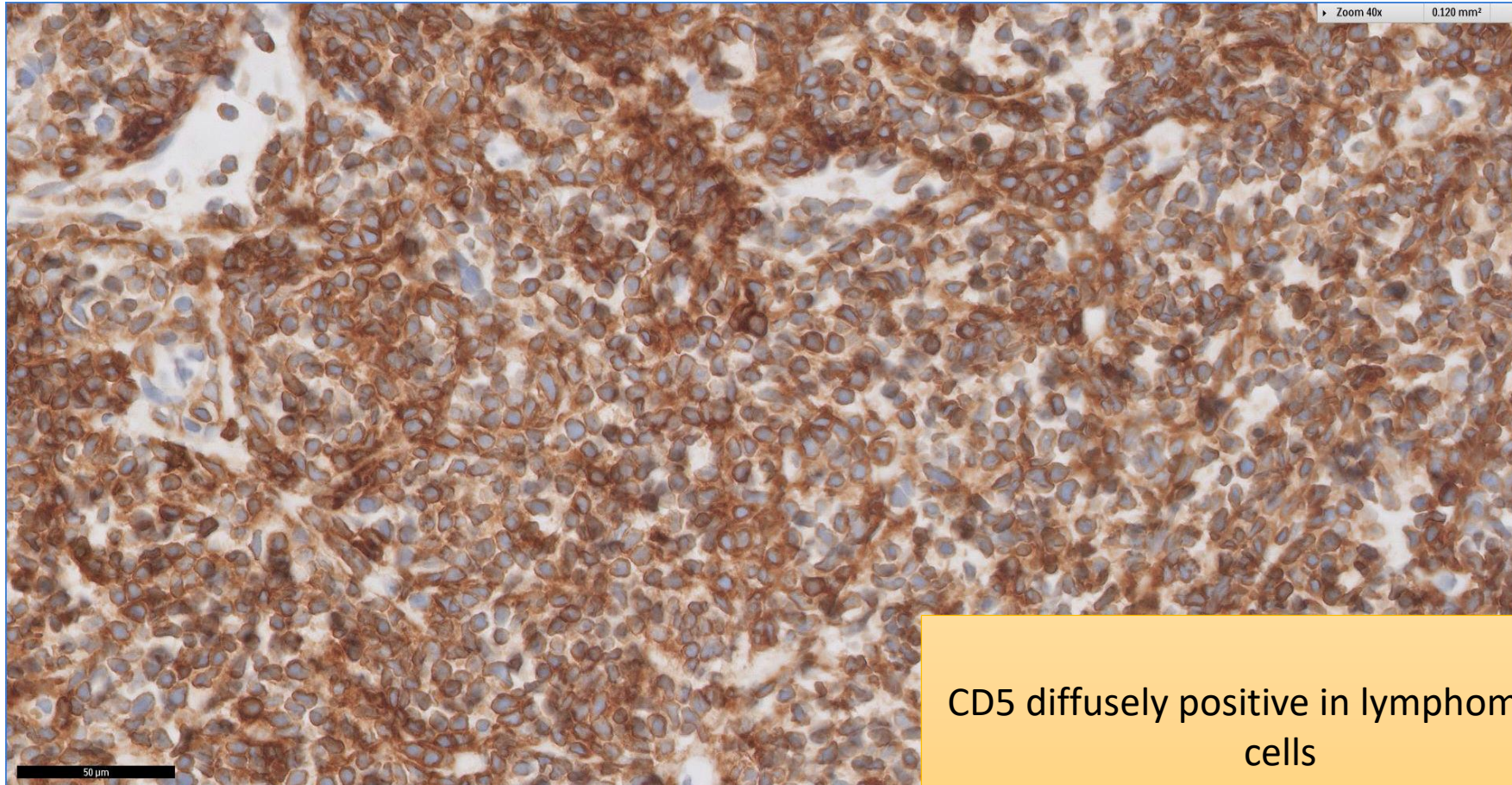
# SGH CASE 21: 17RE130 CD20



CD20 diffusely positive in  
lymphomatous cells



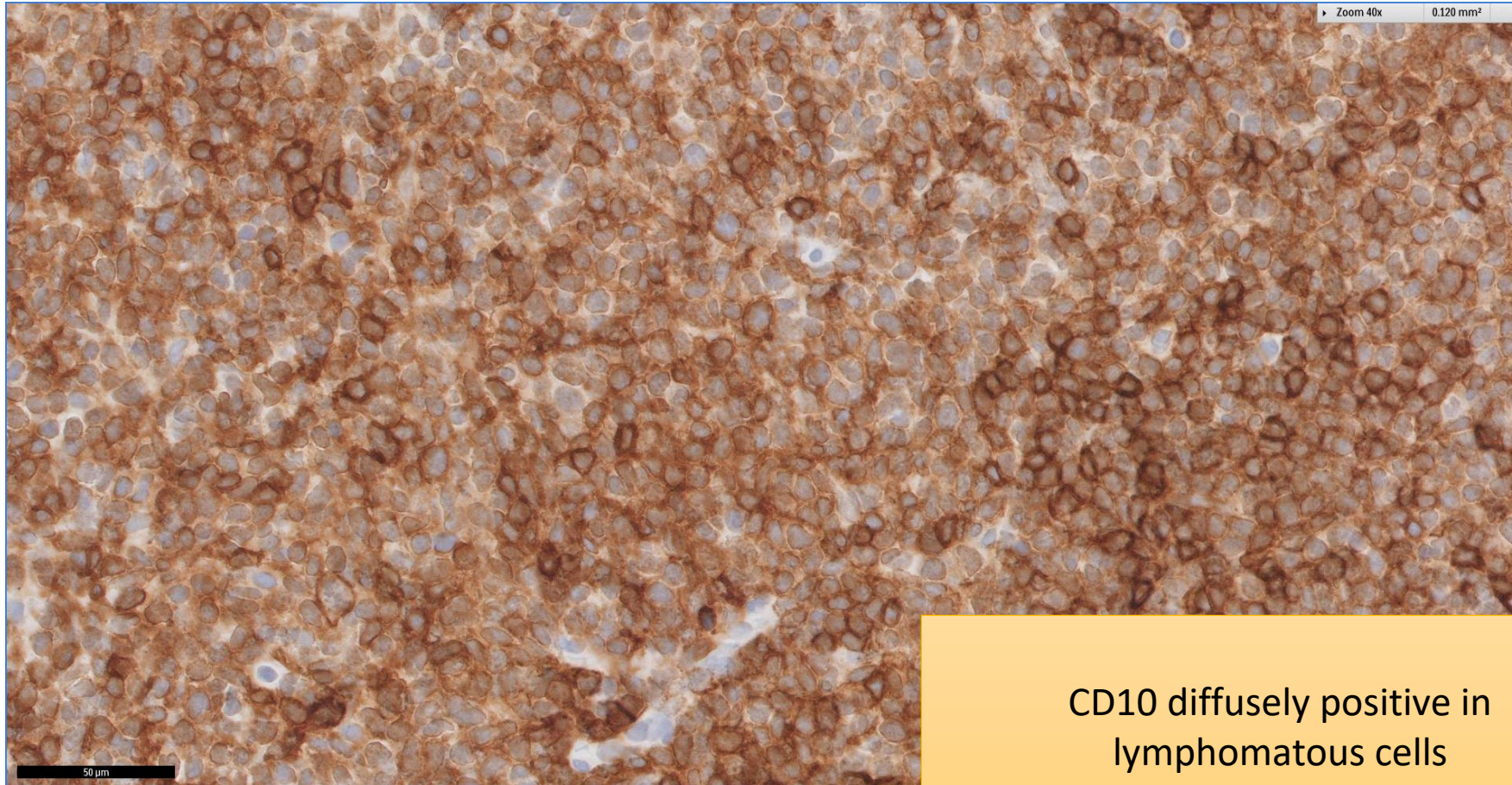
# SGH CASE 21: 17RE130 CD5



CD5 diffusely positive in lymphomatous cells



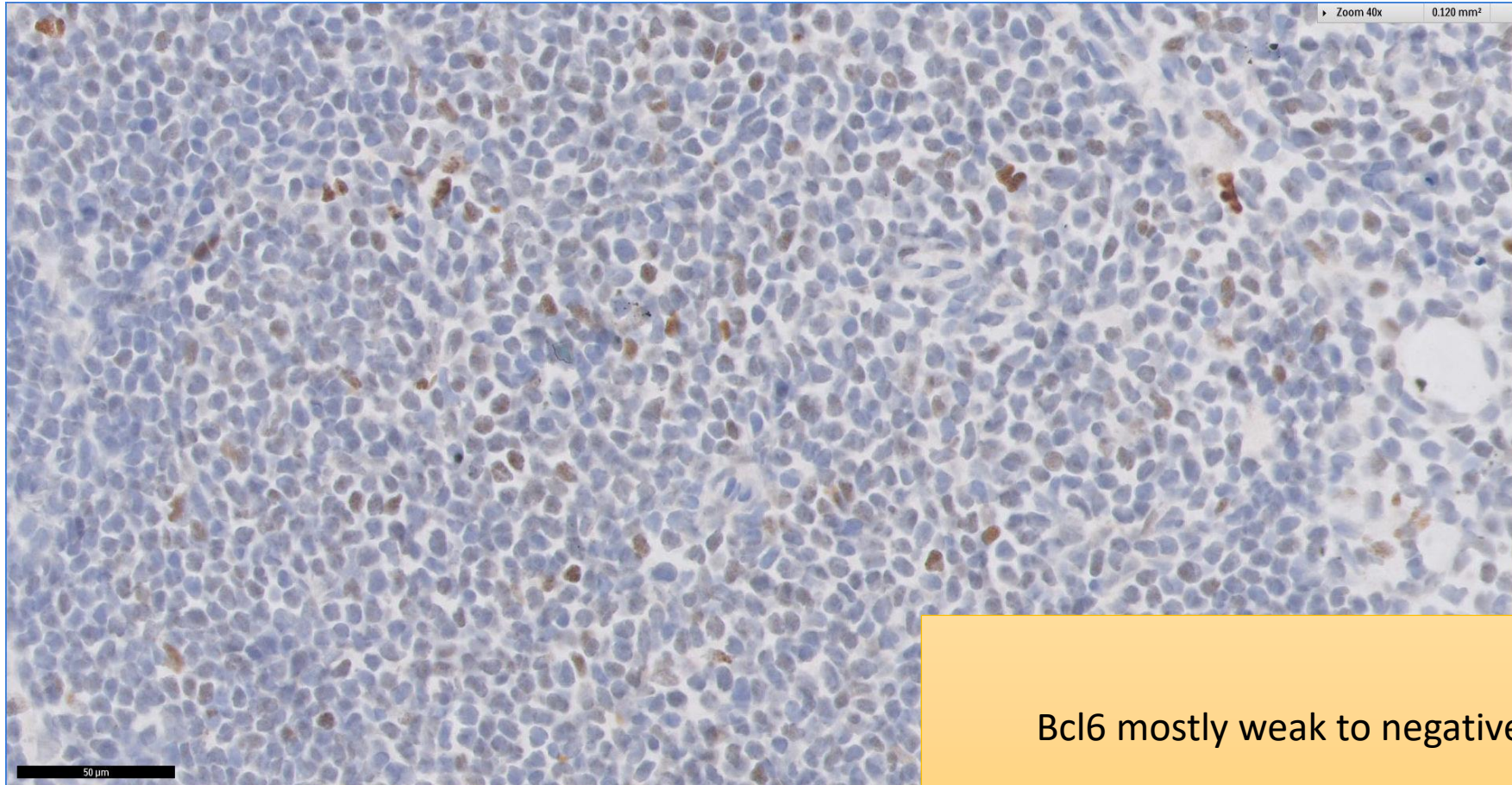
# SGH CASE 21: 17RE130 CD10



CD10 diffusely positive in  
lymphomatous cells



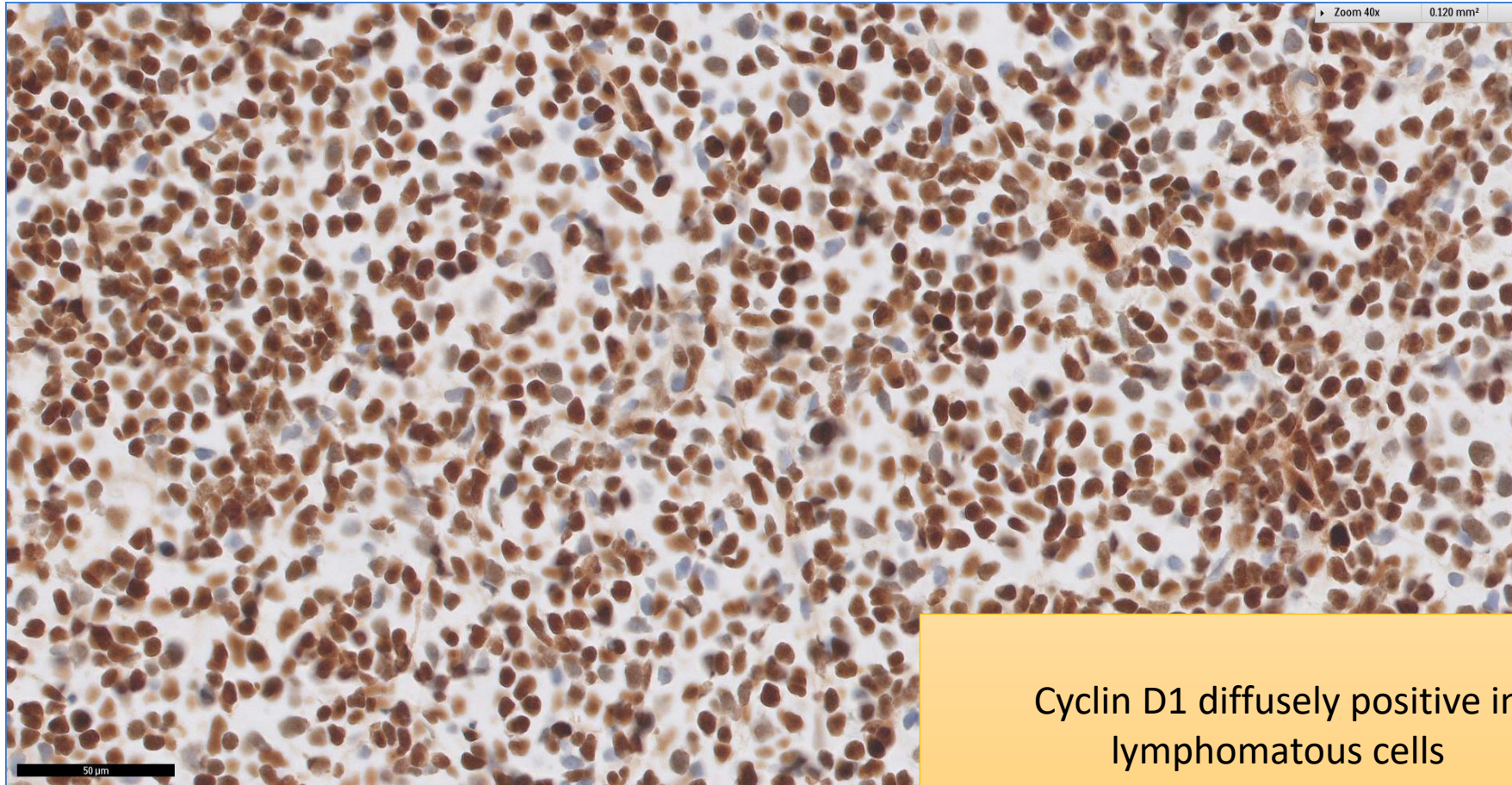
# SGH CASE 21: 17RE130 BCL6



Bcl6 mostly weak to negative



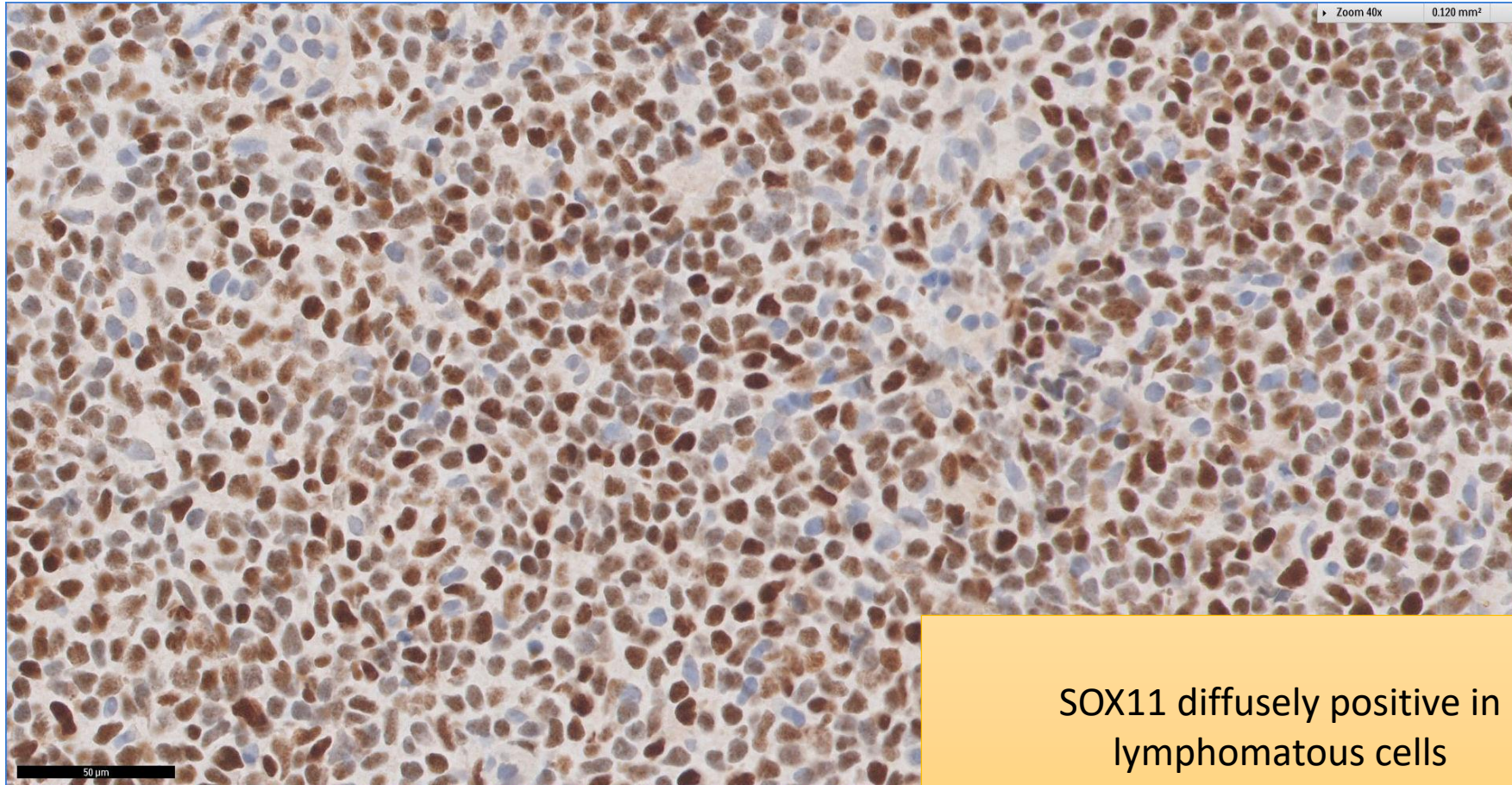
# SGH CASE 21: 17RE130 CYCLIN D1



Cyclin D1 diffusely positive in lymphomatous cells



# SGH CASE 21: 17RE130 SOX11



SOX11 diffusely positive in  
lymphomatous cells



# SGH CASE 21: 17RE130 Discussion (1)

- Patient has a known history of mantle cell lymphoma (MCL) post-treatment outside our institution.
- Summary of findings
  - Monomorphic medium sized B-lymphomatous cells in the soft tissue.
  - Immunophenotype of lymphomatous B-cells
    - CD20, CD79a, PAX5, cyclin D1, CD5 and SOX11 positive
    - CD10 positive, bcl2 positive, bcl6 mostly weak to negative; follicular dendritic meshworks diminutive (CD21 and CD23).
    - CD23 negative, TdT negative; downregulation of p27
    - Ki67 proliferation moderate.
- CCND1(11q13)/IGH(14q23) fusion probes is positive for CCND1/IGH fusion



# SGH CASE 21: 17RE130 Discussion (2)

- CD10 expression can rarely occur in MCL.
  - Approximately 7%. Usually SOX11 positive, bcl6 negative.
  - Gene expression profiling in 9 CD10+ MCL showed germinal centre B-cell signature in these CD10+ MCL. (Akhter et al, 2015)
    - Not consistently associated with somatic hypermutation.
    - No difference in other clinicopathological features or clinical outcome.
- Final diagnosis:
  - Mantle Cell Lymphoma



# Reference

- Akhter A, Mahe E, Street L, Pournazari P, Perizzolo M, Shabani-Rad MT, Stewart DA, Mansoor A. CD10-positive mantle cell lymphoma: biologically distinct entity or an aberrant immunophenotype? Insight, through gene expression profile in a unique case series. J Clin Pathol. 2015 Oct;68(10):844-8.