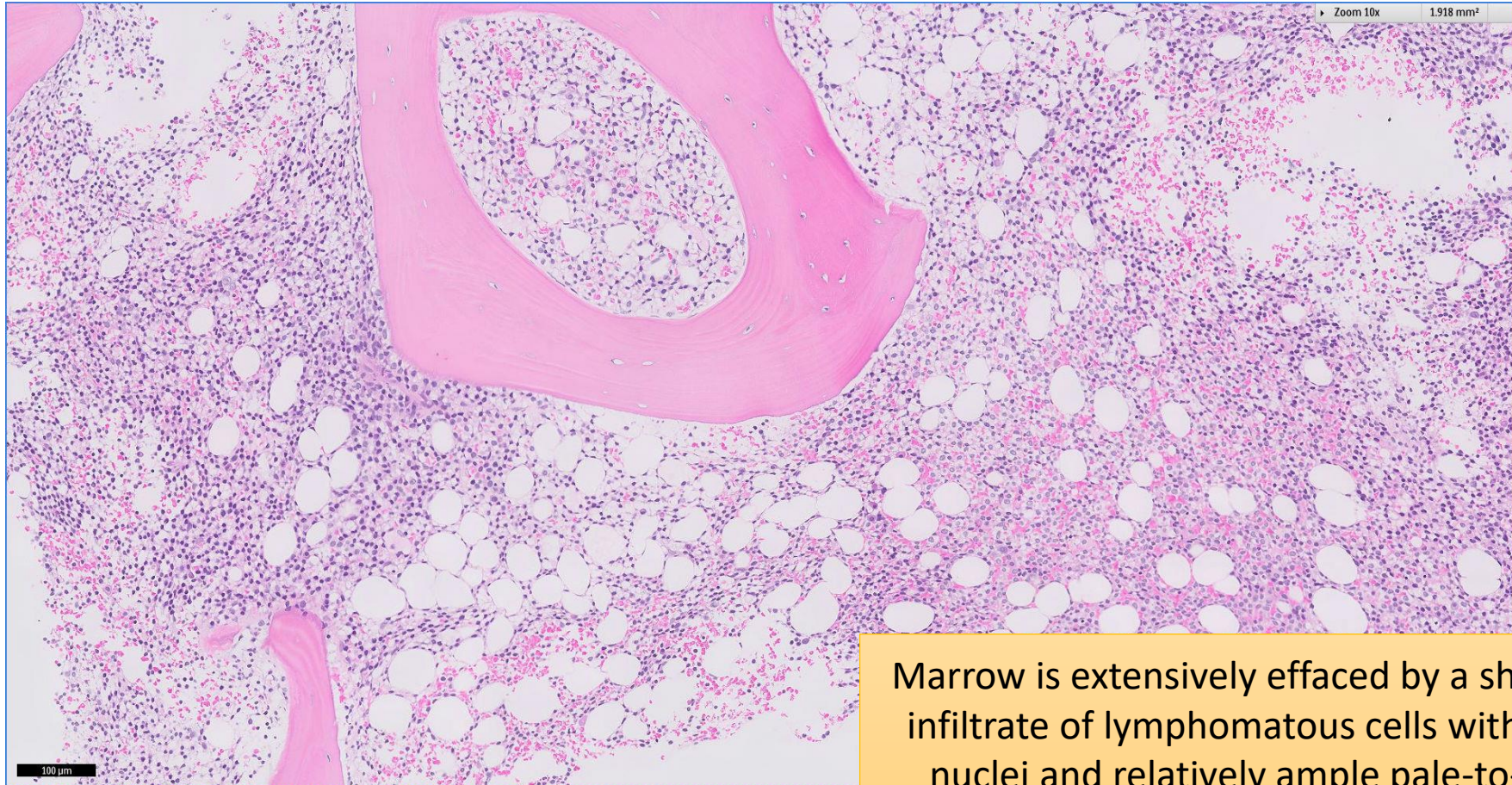


SGH CASE 20: 17RE129

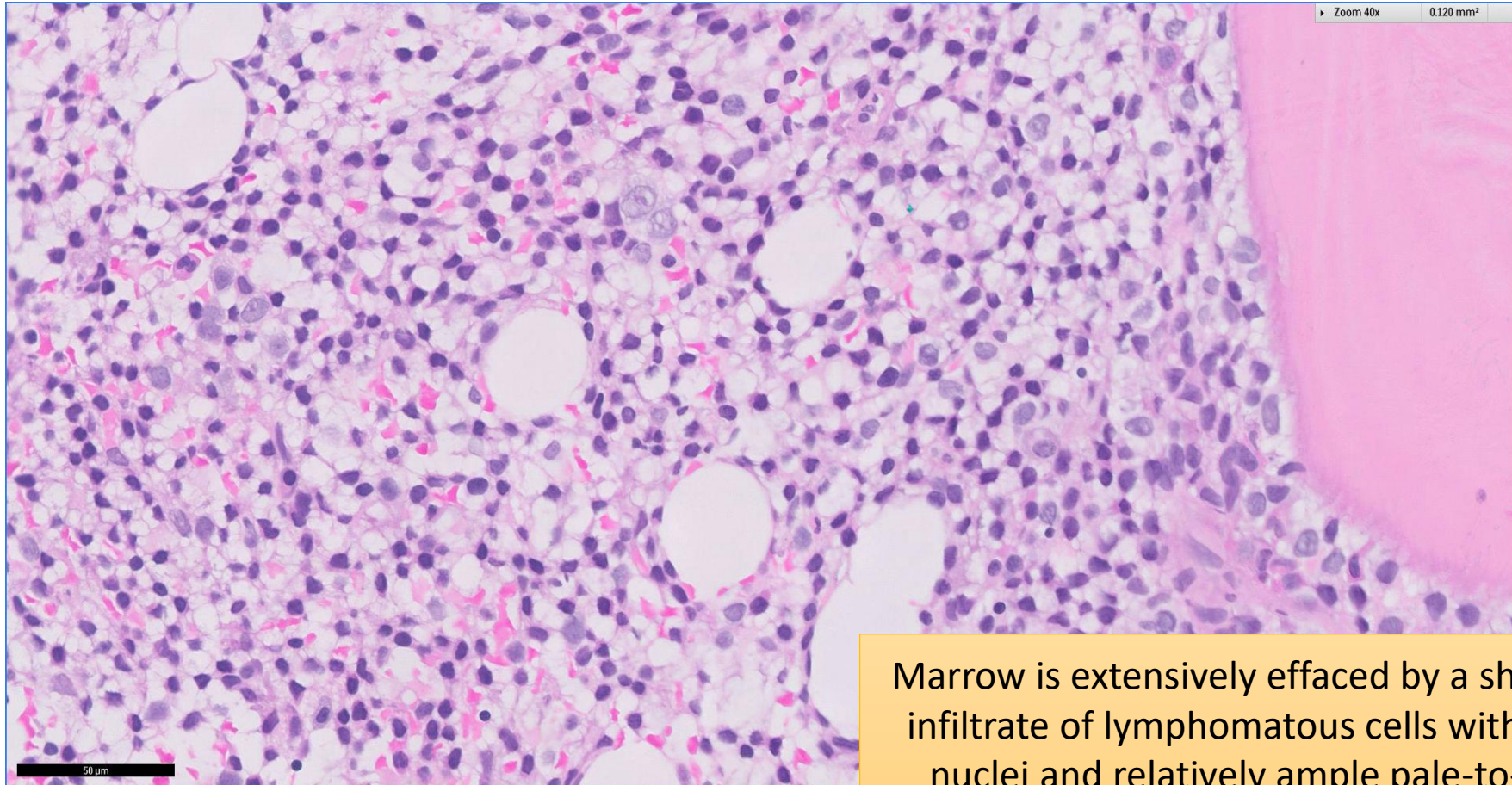
- Clinical History:
 - 70+ years old. Male. Anemia and thrombocytopaenia with mild lymphocytosis ($7.23 \times 10^9/L$).
- Specimen:
 - Bone marrow trephine biopsy

SGH CASE 20: 17RE129 H&E



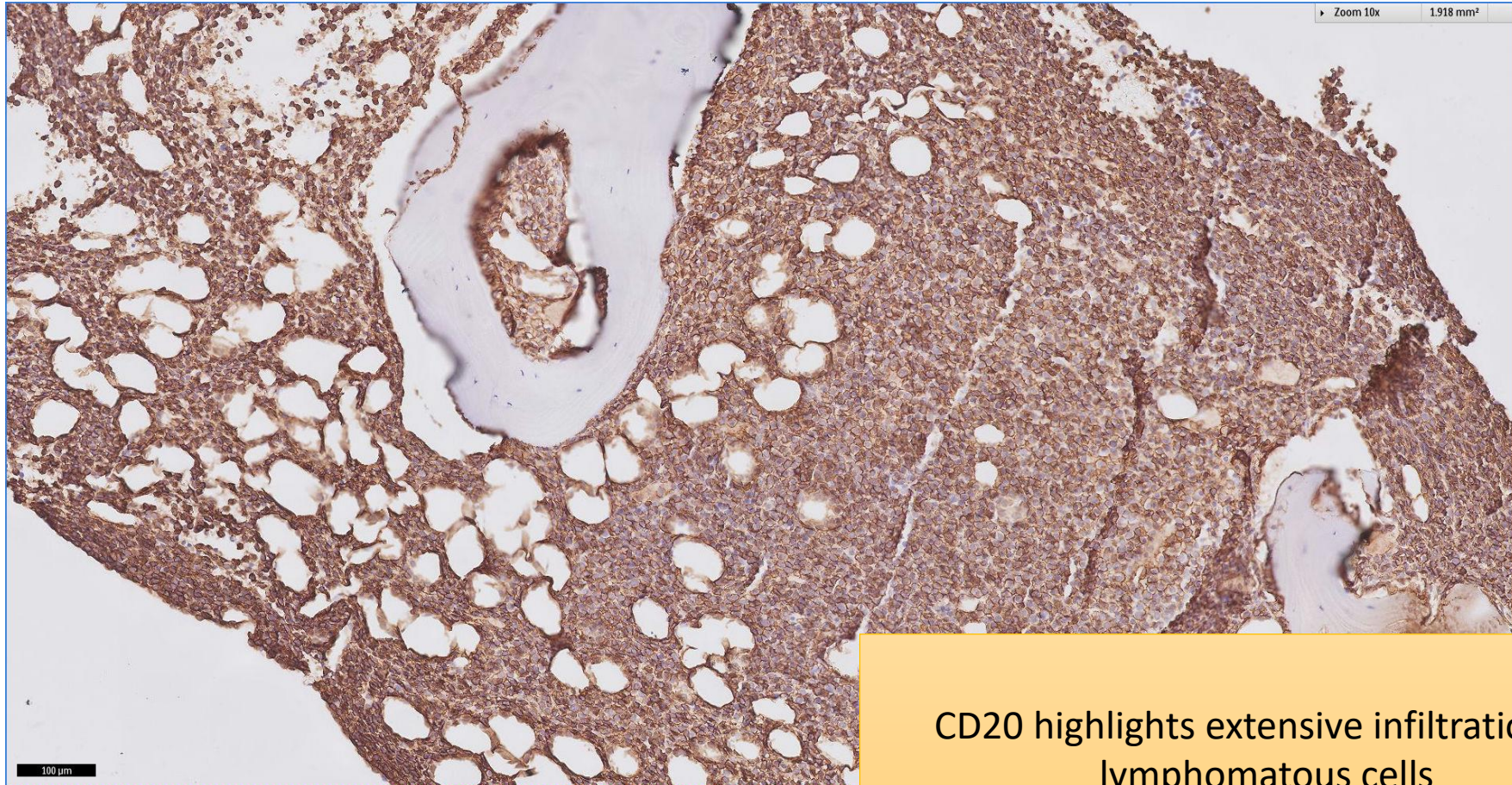
Marrow is extensively effaced by a sheet-like infiltrate of lymphomatous cells with bland nuclei and relatively ample pale-to-clear cytoplasm

SGH CASE 20: 17RE129 H&E



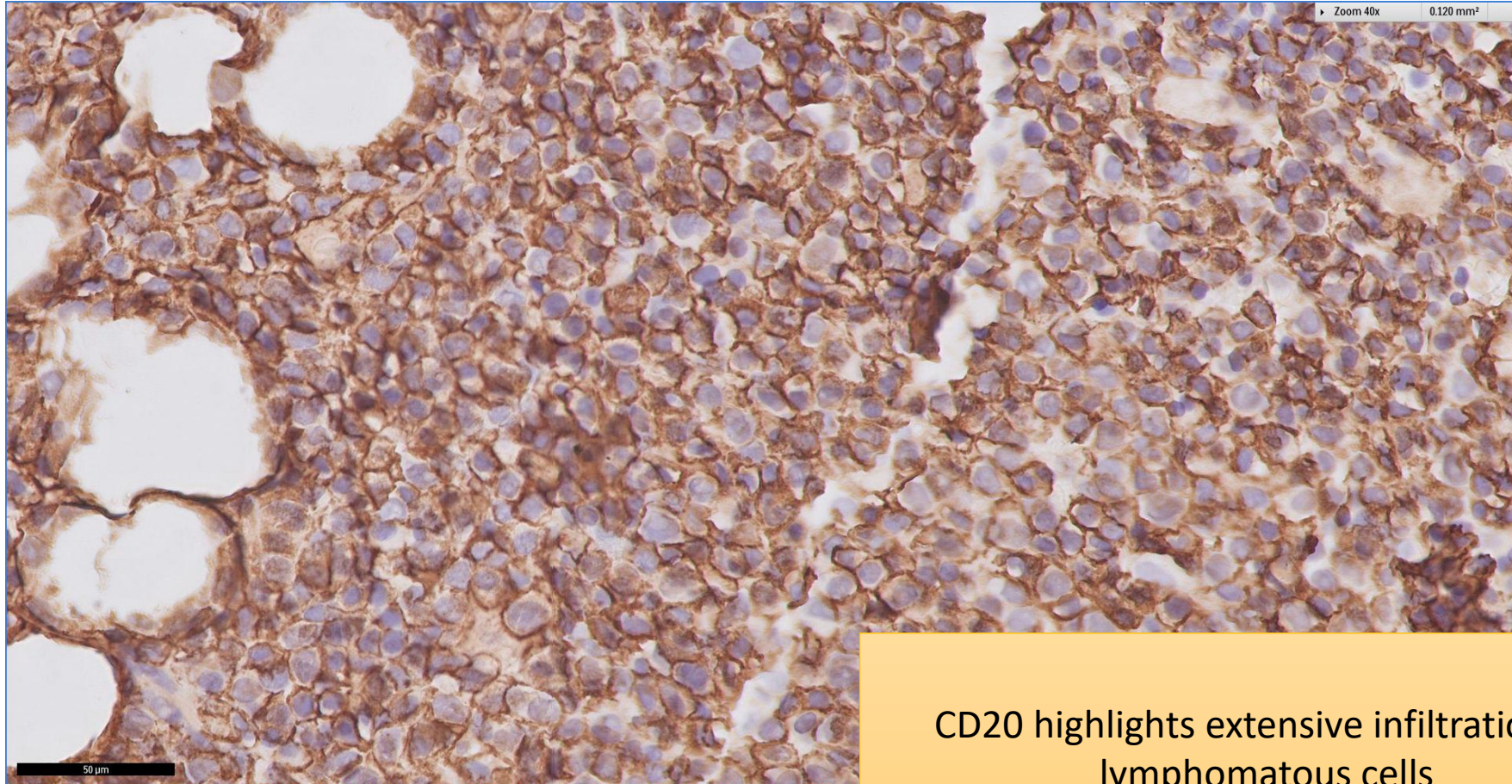
Marrow is extensively effaced by a sheet-like infiltrate of lymphomatous cells with bland nuclei and relatively ample pale-to-clear cytoplasm

SGH CASE 20: 17RE129 CD20



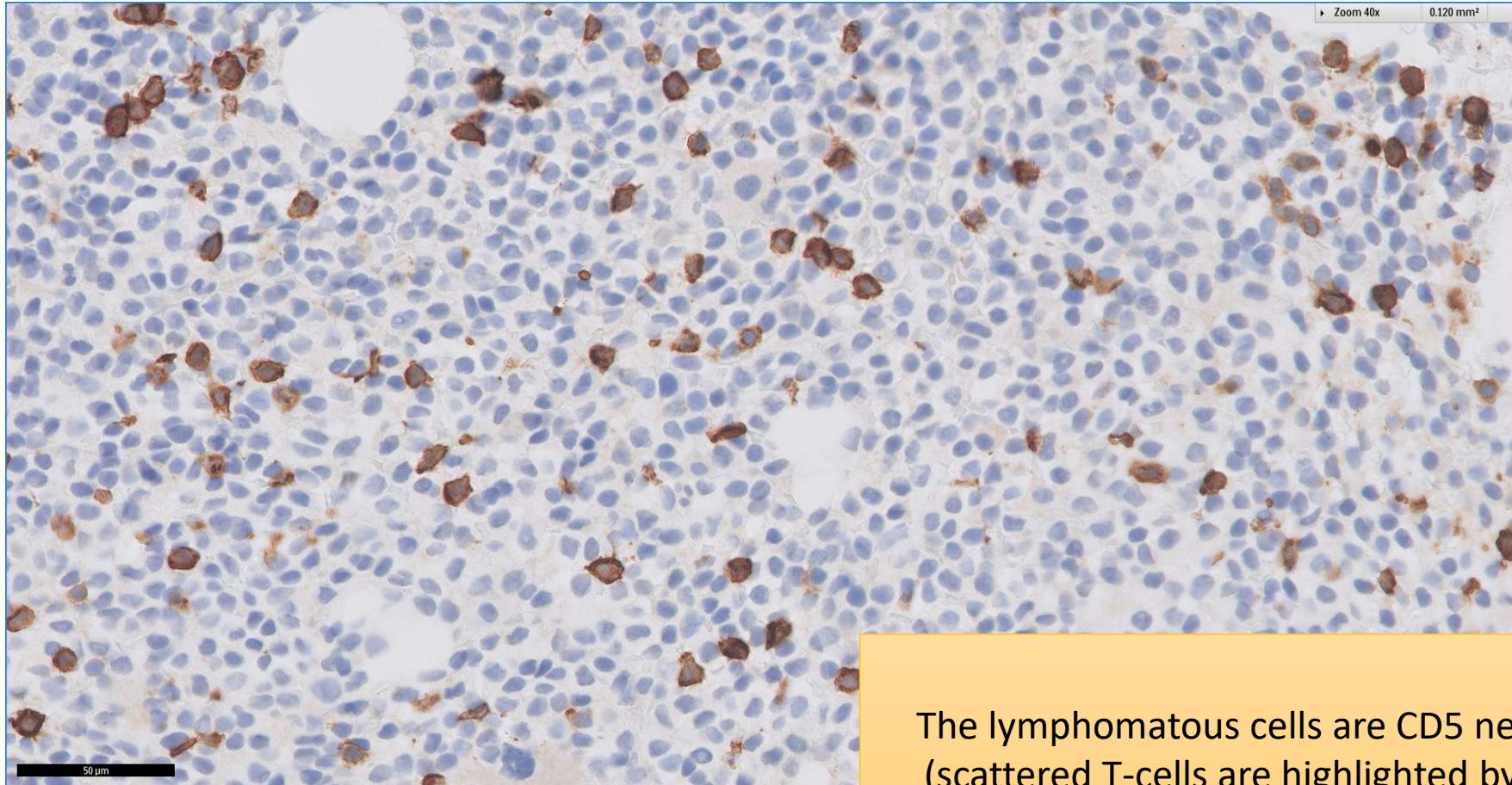
CD20 highlights extensive infiltration by lymphomatous cells

SGH CASE 20: 17RE129 CD20



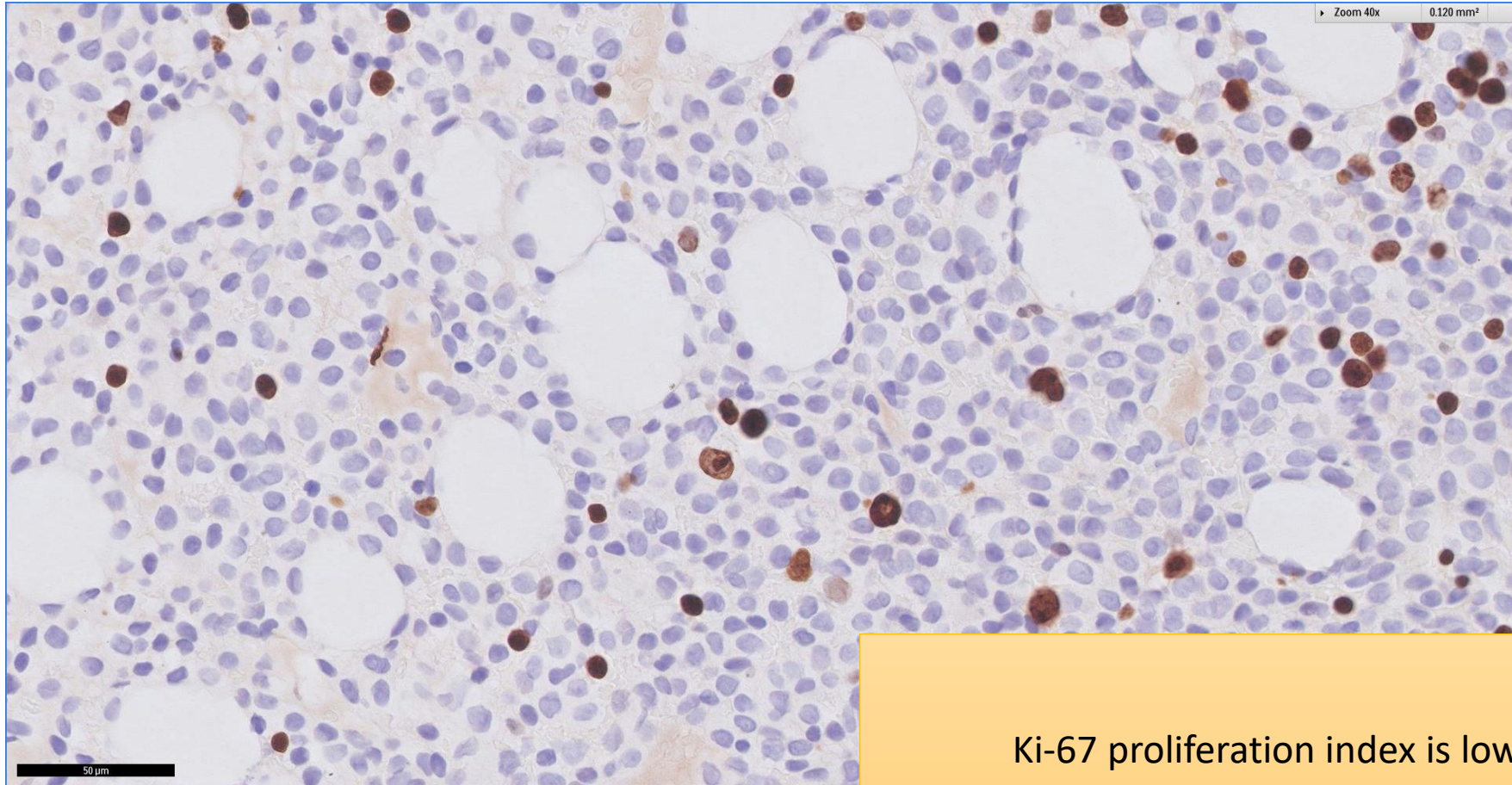
CD20 highlights extensive infiltration by lymphomatous cells

SGH CASE 20: 17RE129 CD5



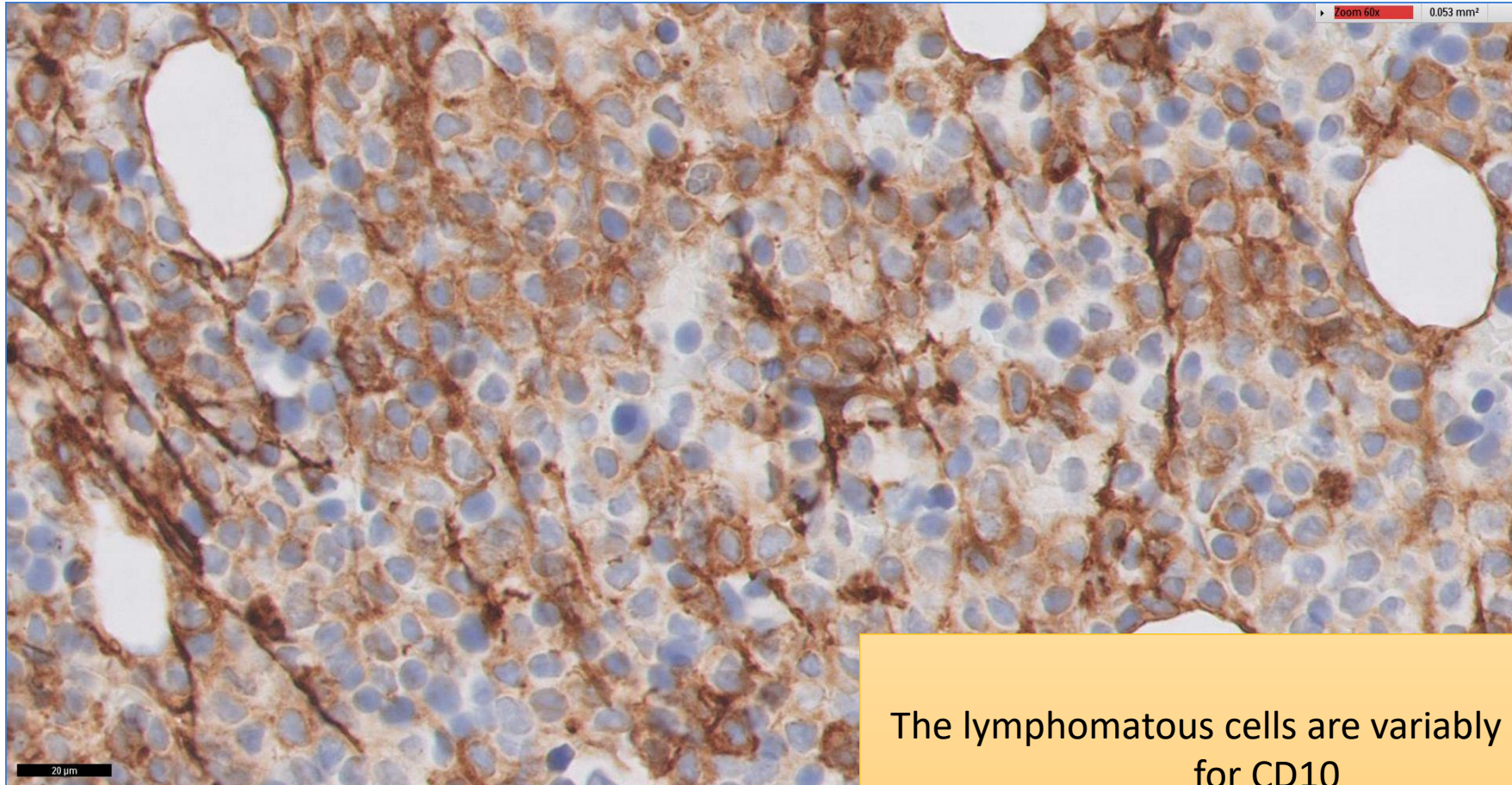
The lymphomatous cells are CD5 negative
(scattered T-cells are highlighted by CD5)

SGH CASE 20: 17RE129 KI67



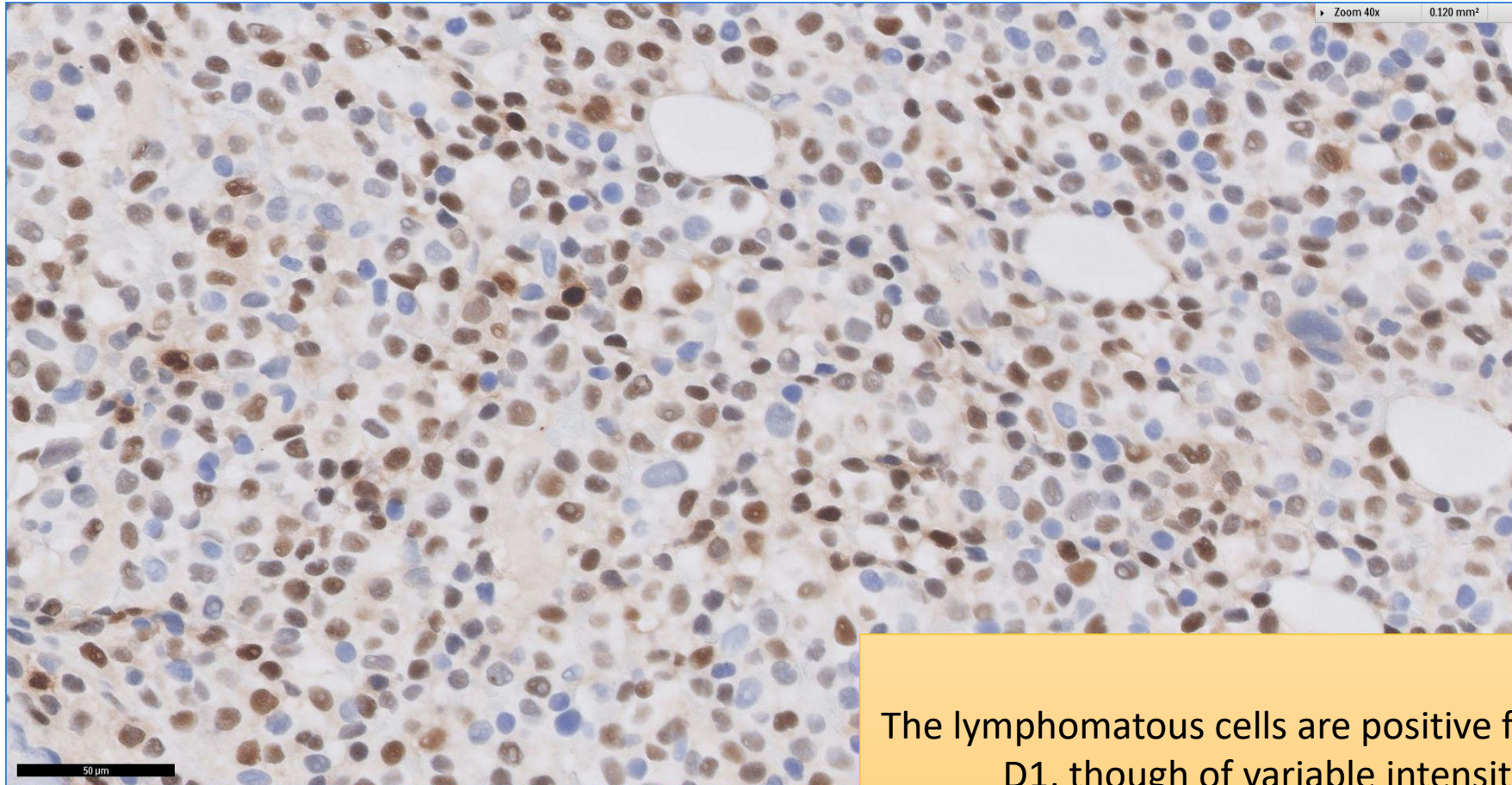
Ki-67 proliferation index is low

SGH CASE 20: 17RE129 CD10



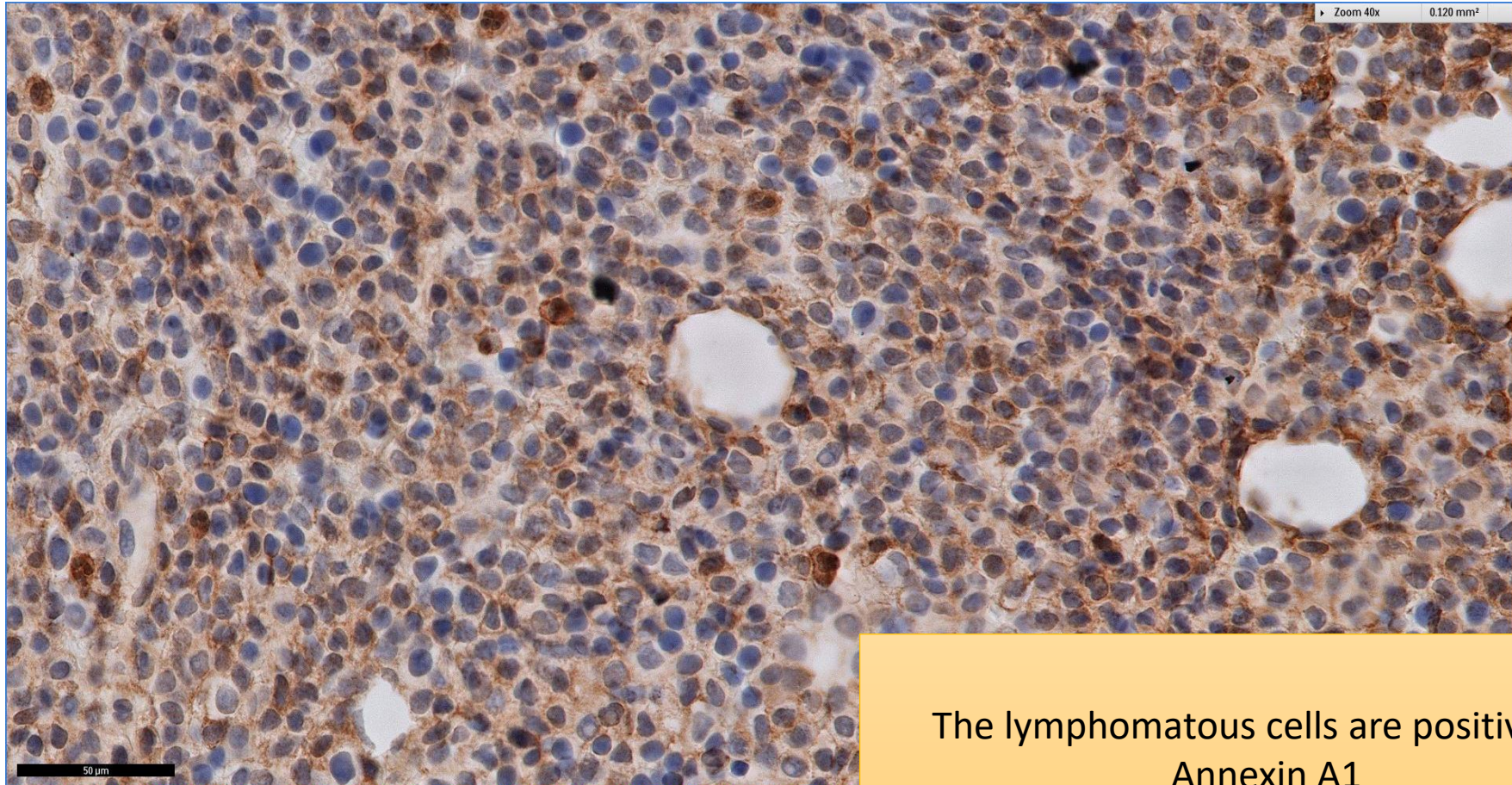
The lymphomatous cells are variably positive for CD10

SGH CASE 20: 17RE129 CYCLIN D1



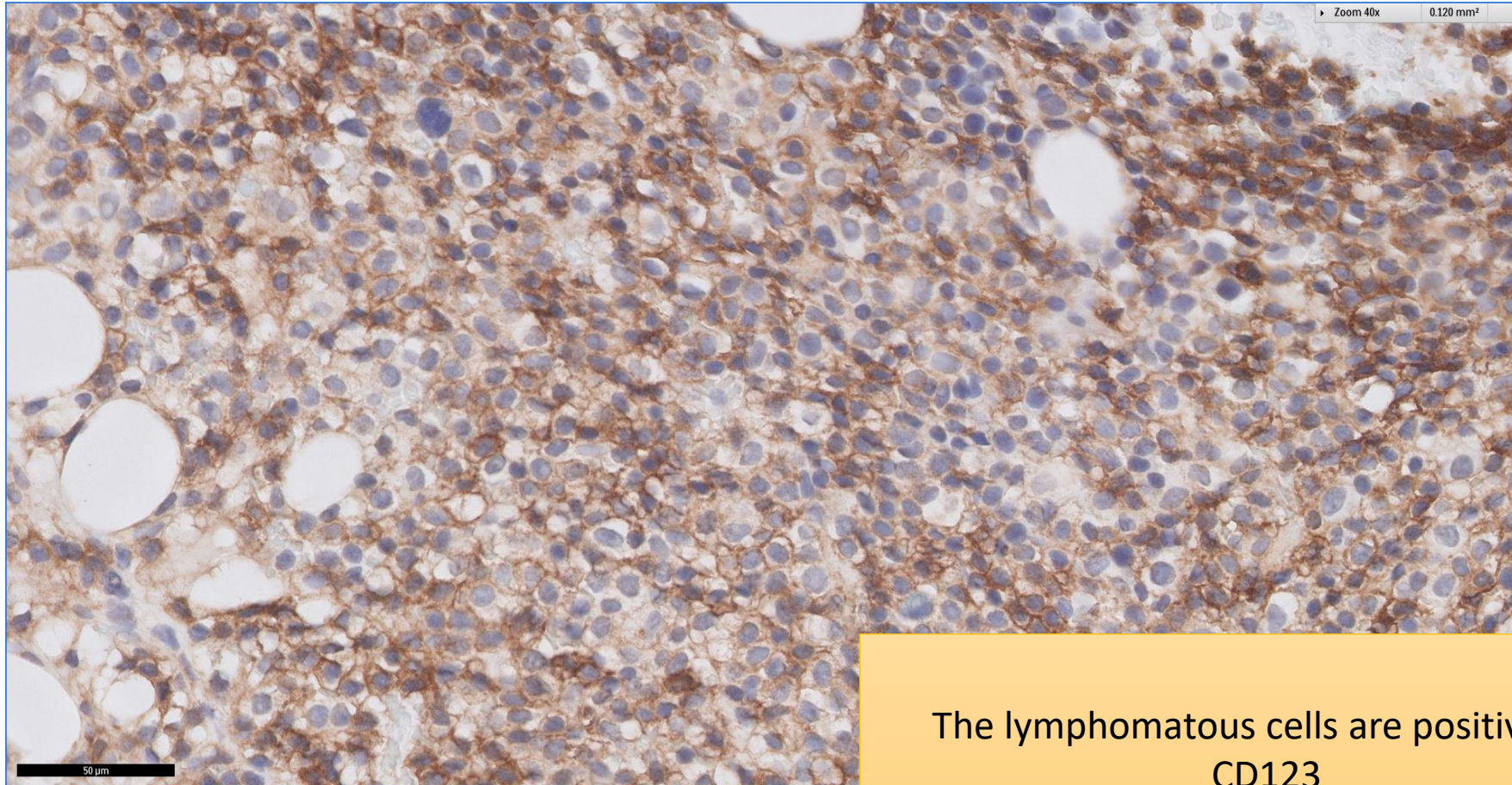
The lymphomatous cells are positive for cyclin D1, though of variable intensity

SGH CASE 20: 17RE129 ANNEXIN A1



The lymphomatous cells are positive for
Annexin A1

SGH CASE 20: 17RE129 CD123



The lymphomatous cells are positive for
CD123

SGH CASE 20: 17RE129

- Diagnosis
 - Hairy Cell Leukaemia
 - CD10 positive in a subset of lymphomatous cells
- Bone marrow aspiration and flow cytometry findings are corroborative
- BRAF V600E mutation detected (c.1799T>A) in bone marrow aspirate