

SGH CASE 18: 17RE124

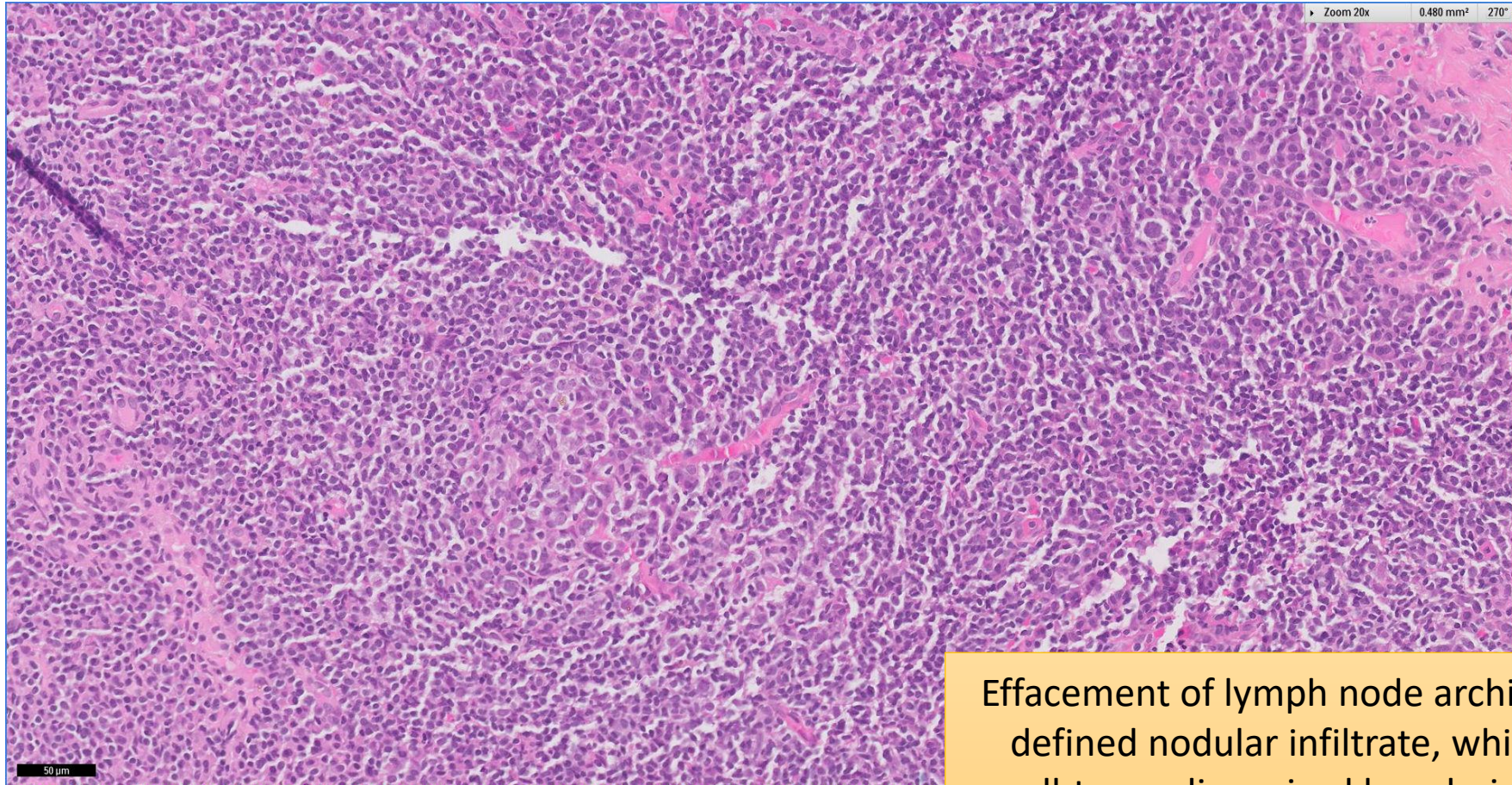
- Clinical History:
 - 50+ years old (late 50s). Female. Enlarged right axillary lymph node
- Specimen:
 - Right axillary lymph node core biopsy

SGH CASE 18: 17RE124 H&E



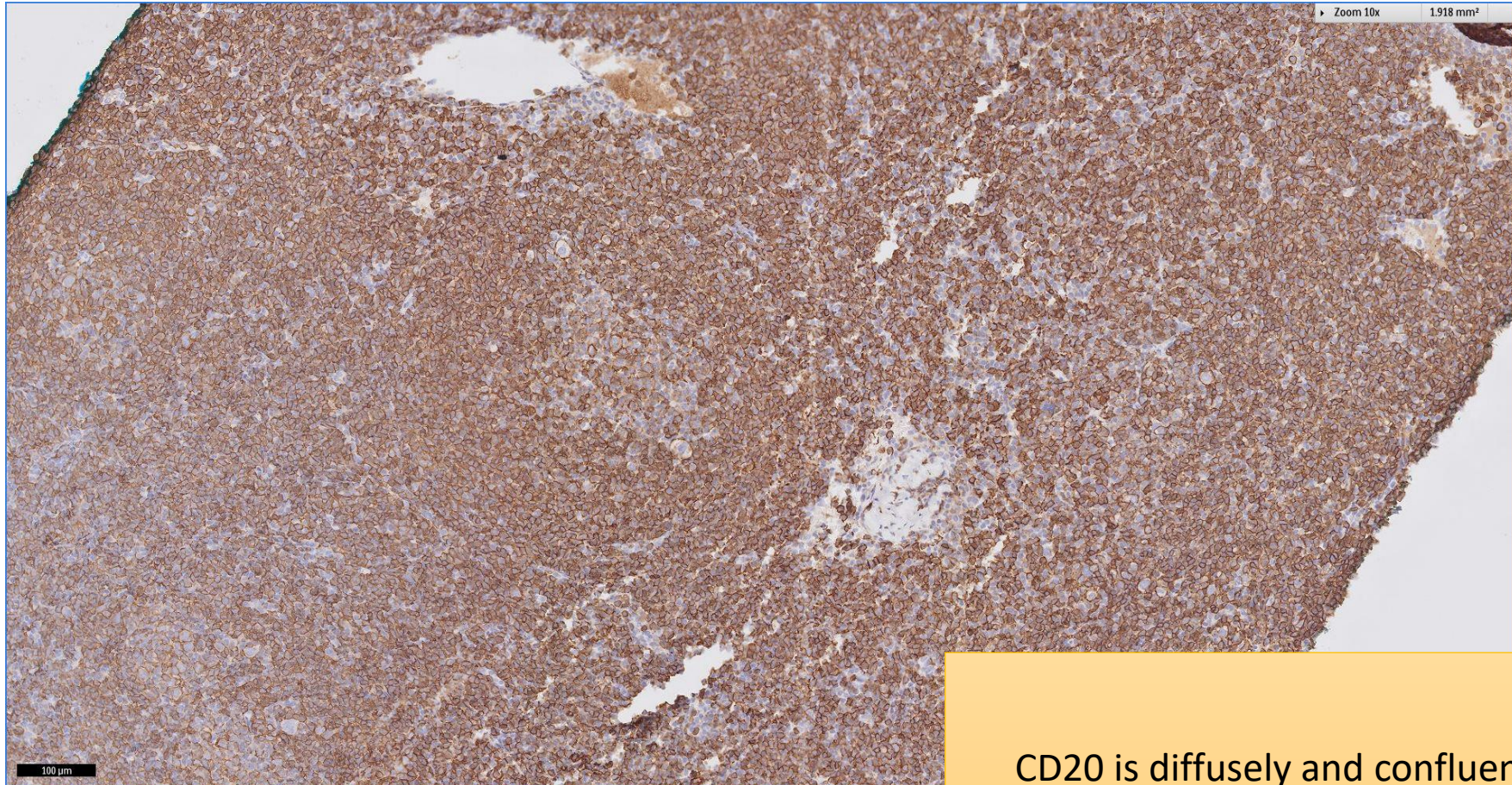
Effacement of lymph node architecture by ill-defined nodular infiltrate

SGH CASE 18: 17RE124 H&E



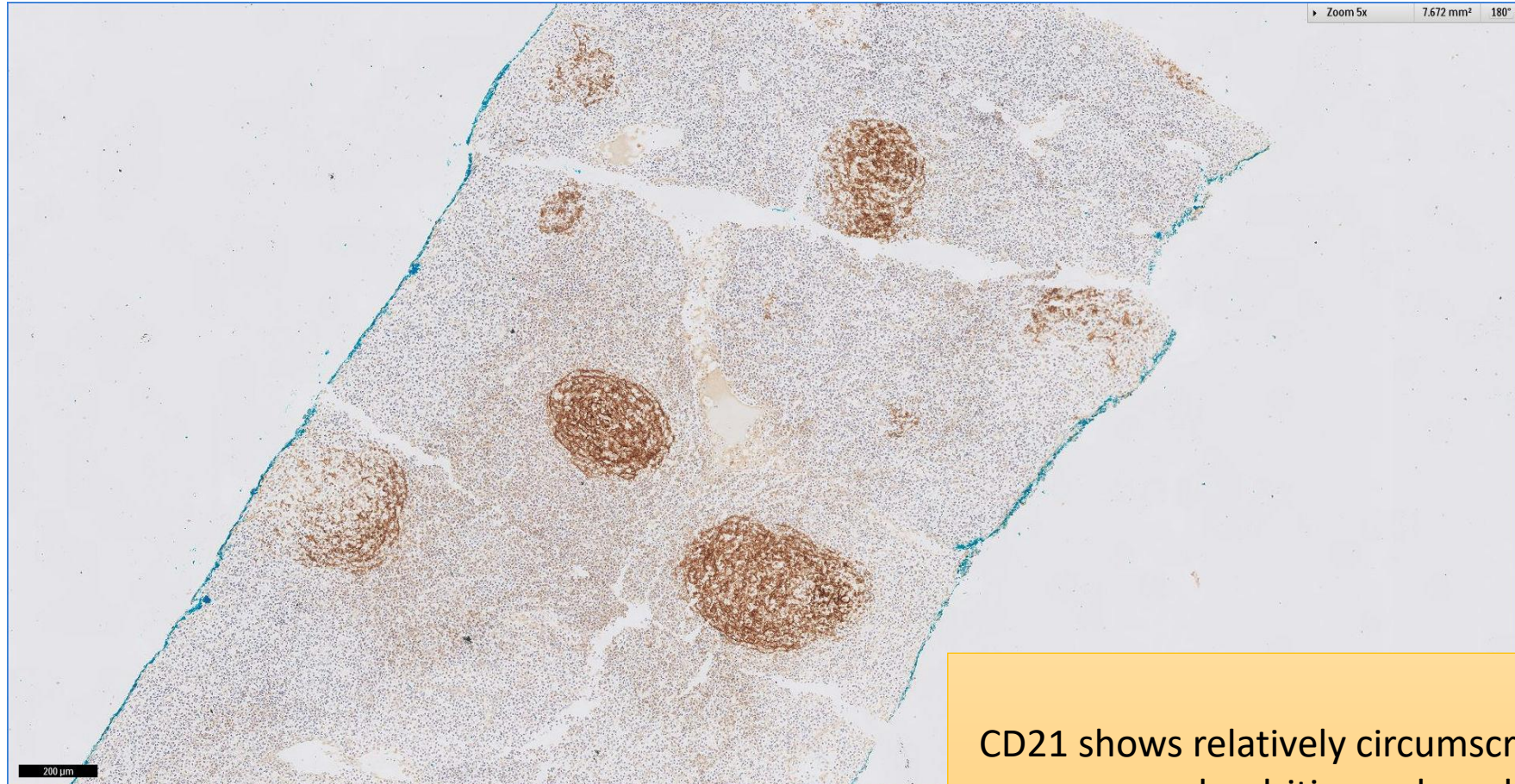
Effacement of lymph node architecture by ill-defined nodular infiltrate, which is mostly small-to-medium sized lymphoid cells that are centrocyte in appearance

SGH CASE 18: 17RE124 CD20



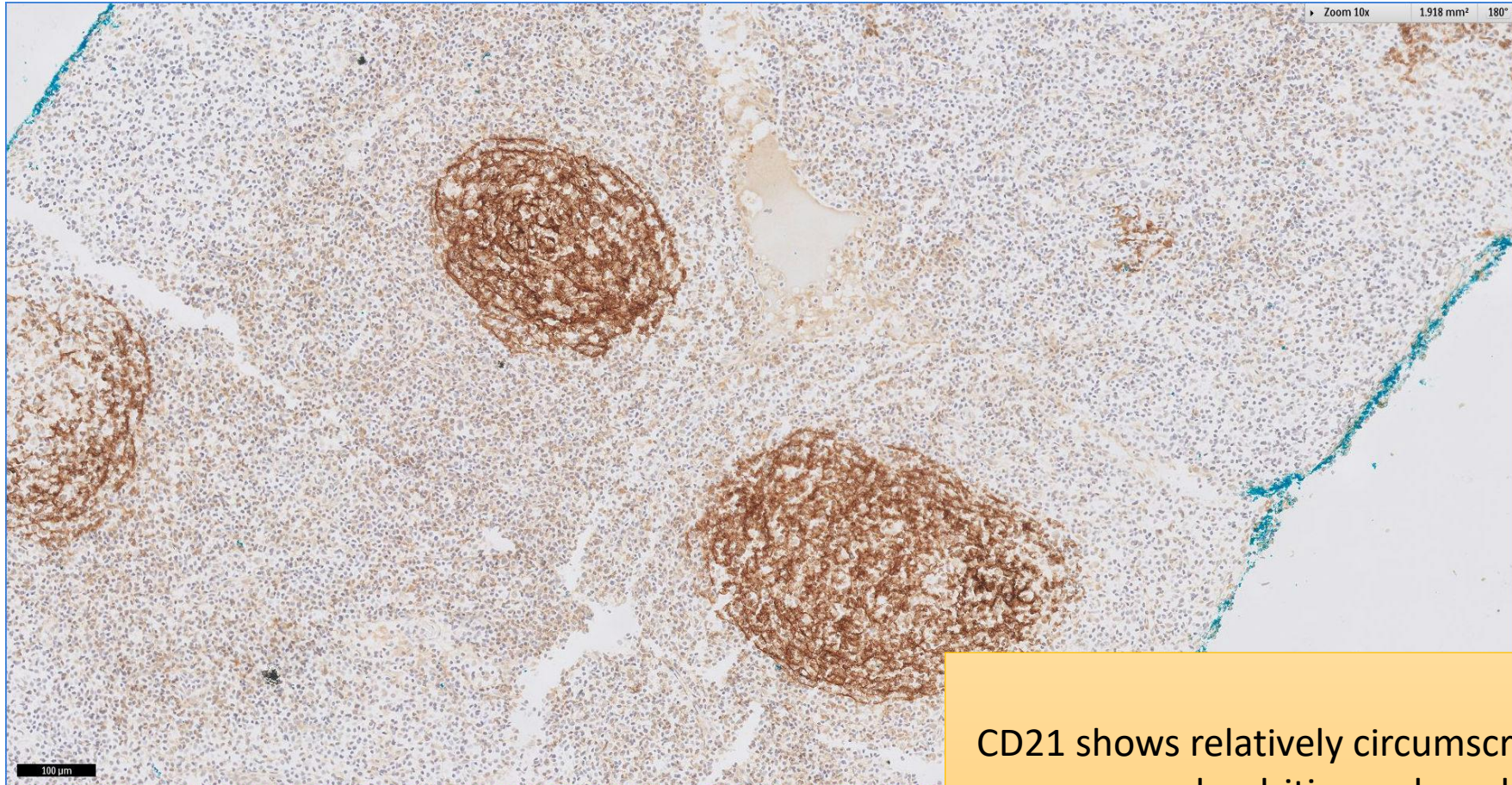
CD20 is diffusely and confluent positive

SGH CASE 18: 17RE124 CD21



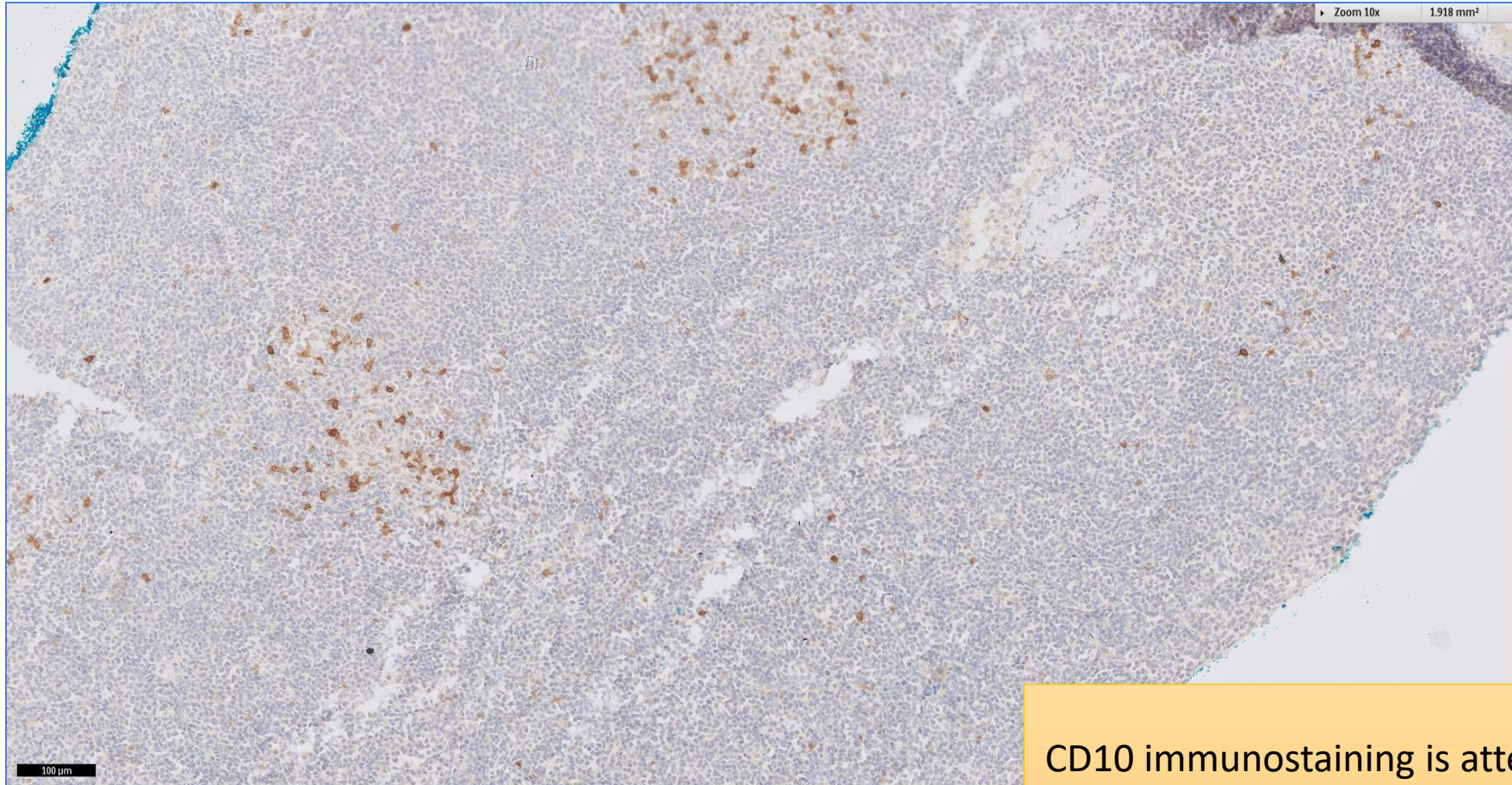
CD21 shows relatively circumscribed follicular dendritic meshworks

SGH CASE 18: 17RE124 CD21



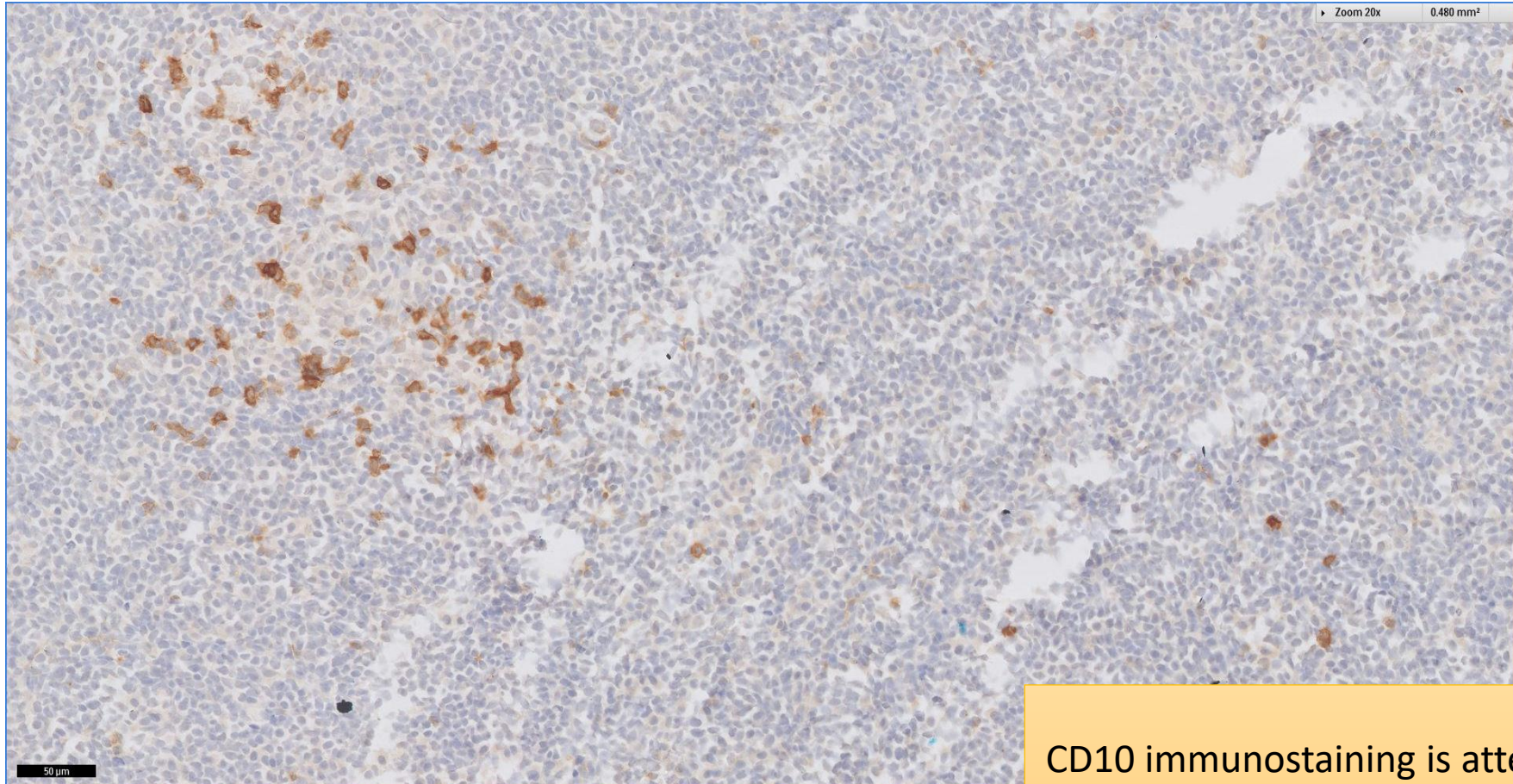
CD21 shows relatively circumscribed follicular dendritic meshworks

SGH CASE 18: 17RE124 CD10



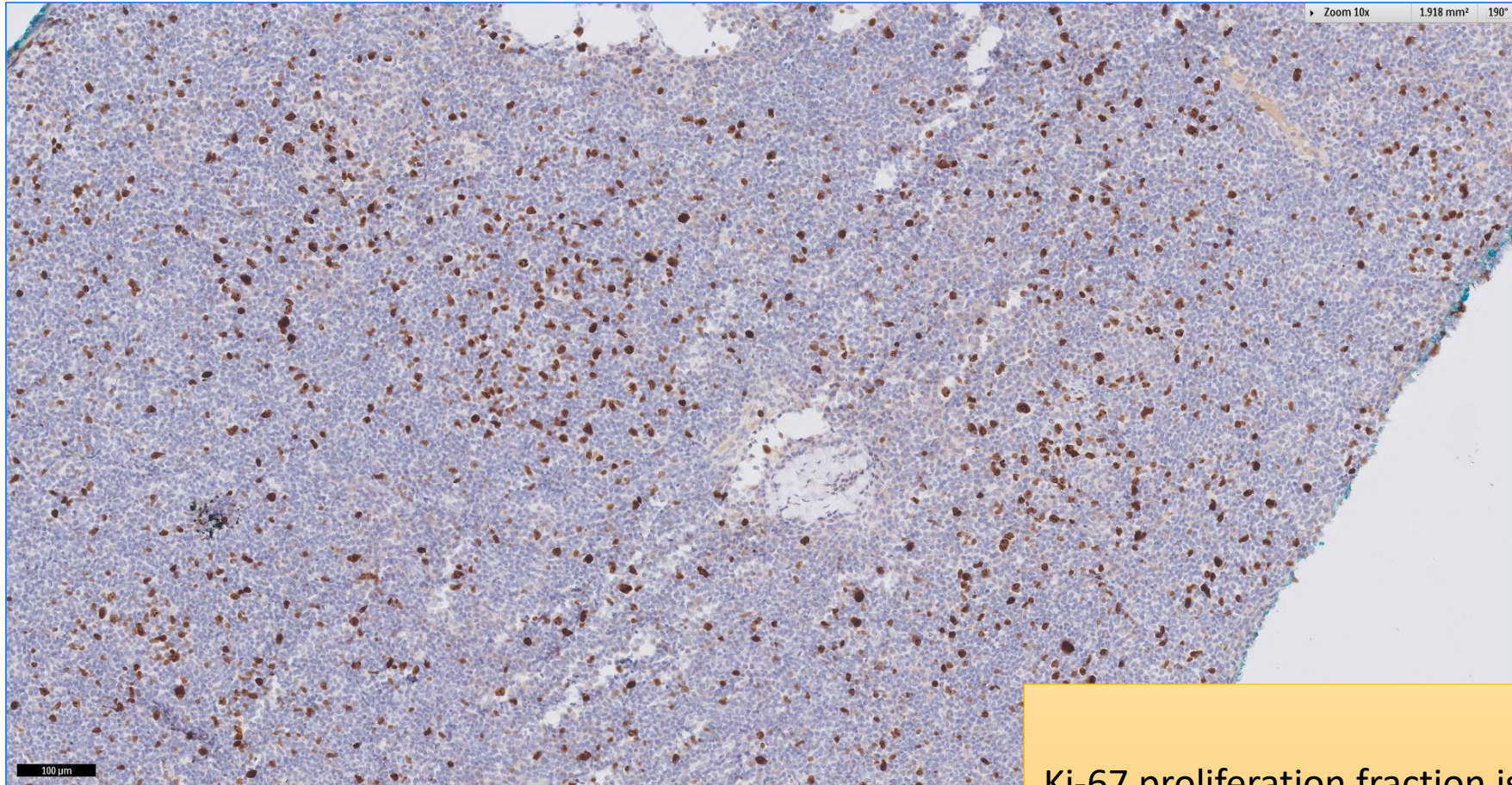
CD10 immunostaining is attenuated in the follicles

SGH CASE 18: 17RE124 CD10



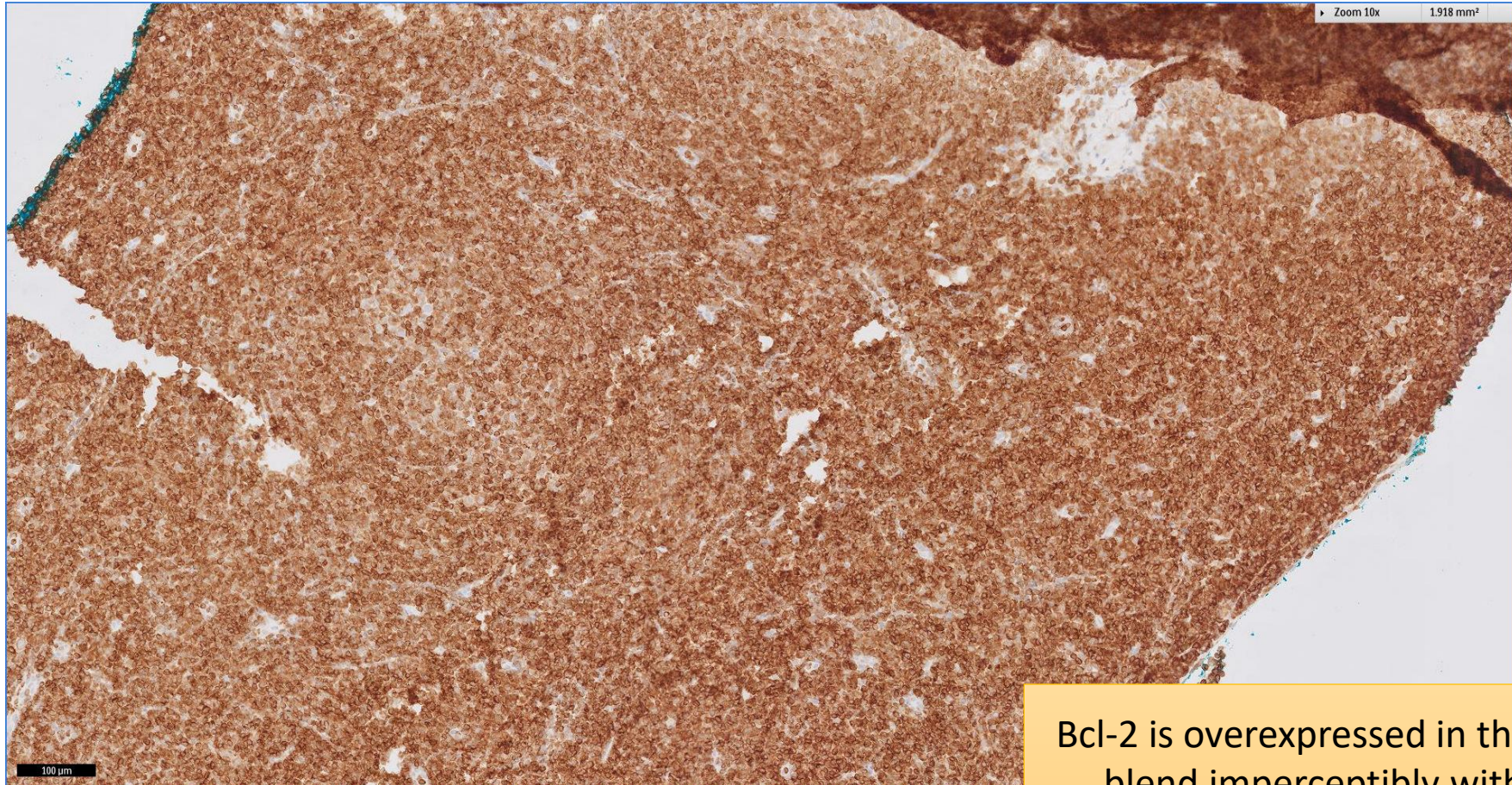
CD10 immunostaining is attenuated in the follicles

SGH CASE 18: 17RE124 KI67



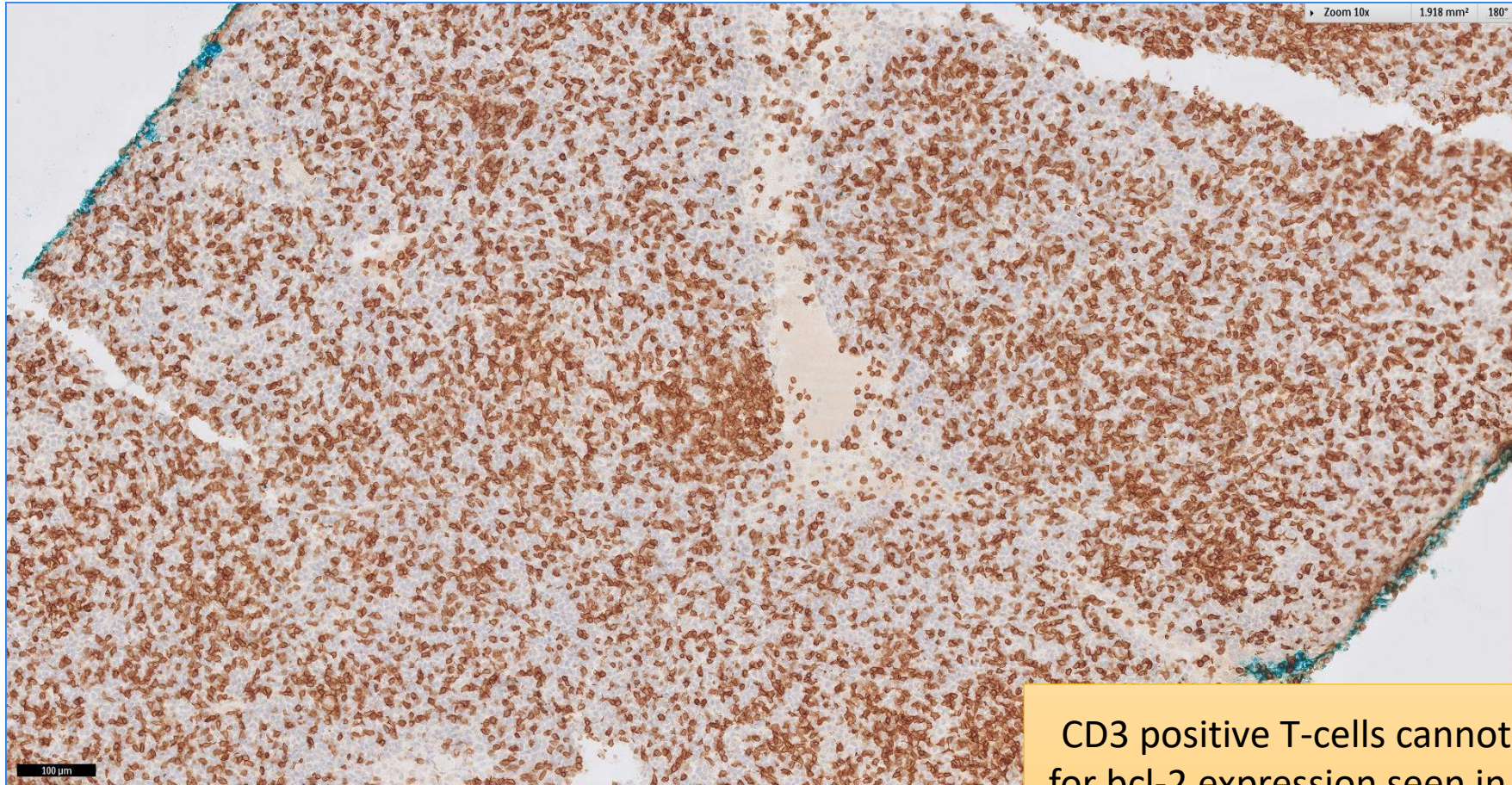
Ki-67 proliferation fraction is generally low

SGH CASE 18: 17RE124 BCL2



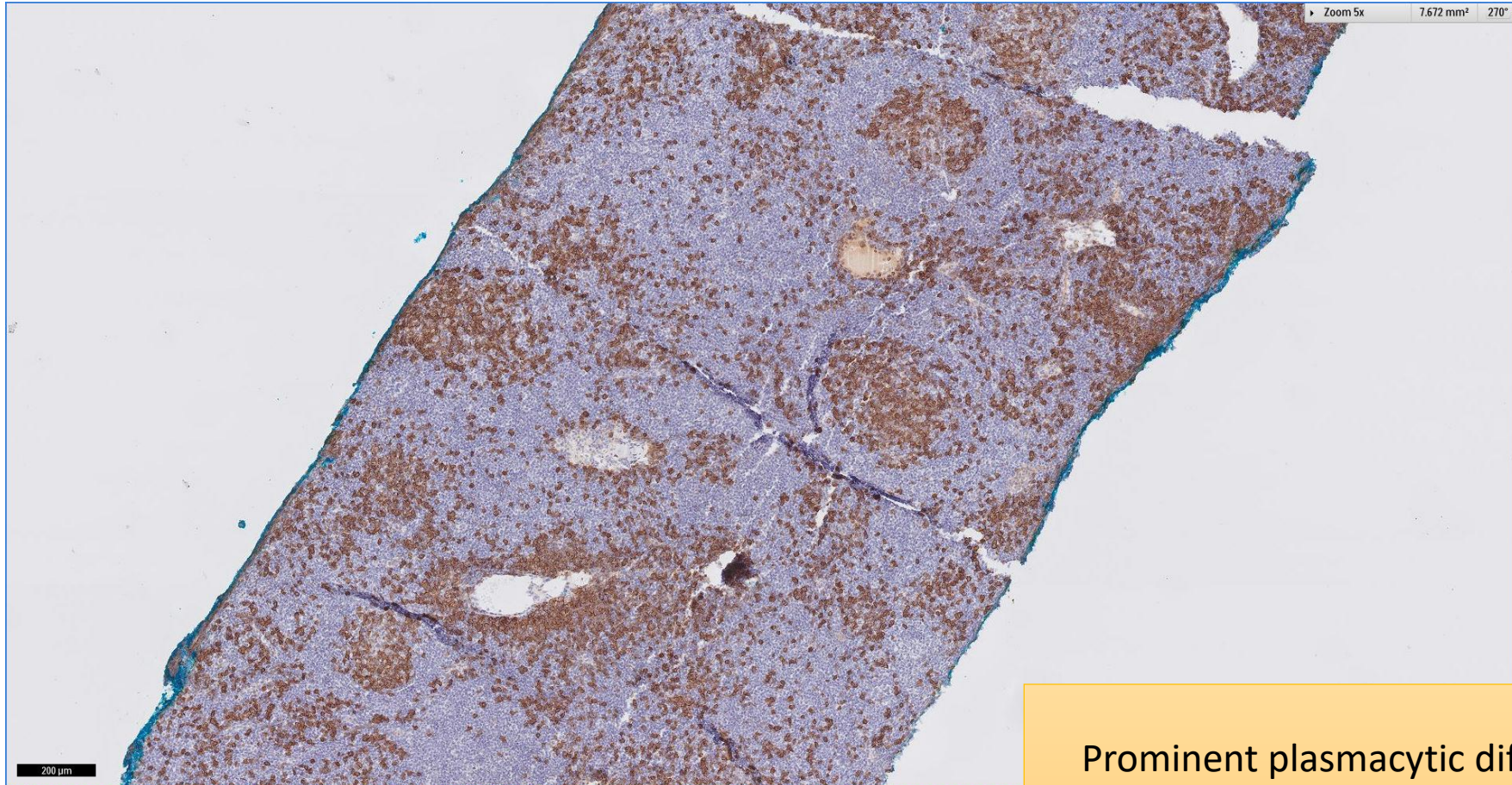
Bcl-2 is overexpressed in the follicles and blend imperceptibly with positively staining cells outside the follicles

SGH CASE 18: 17RE124 CD3



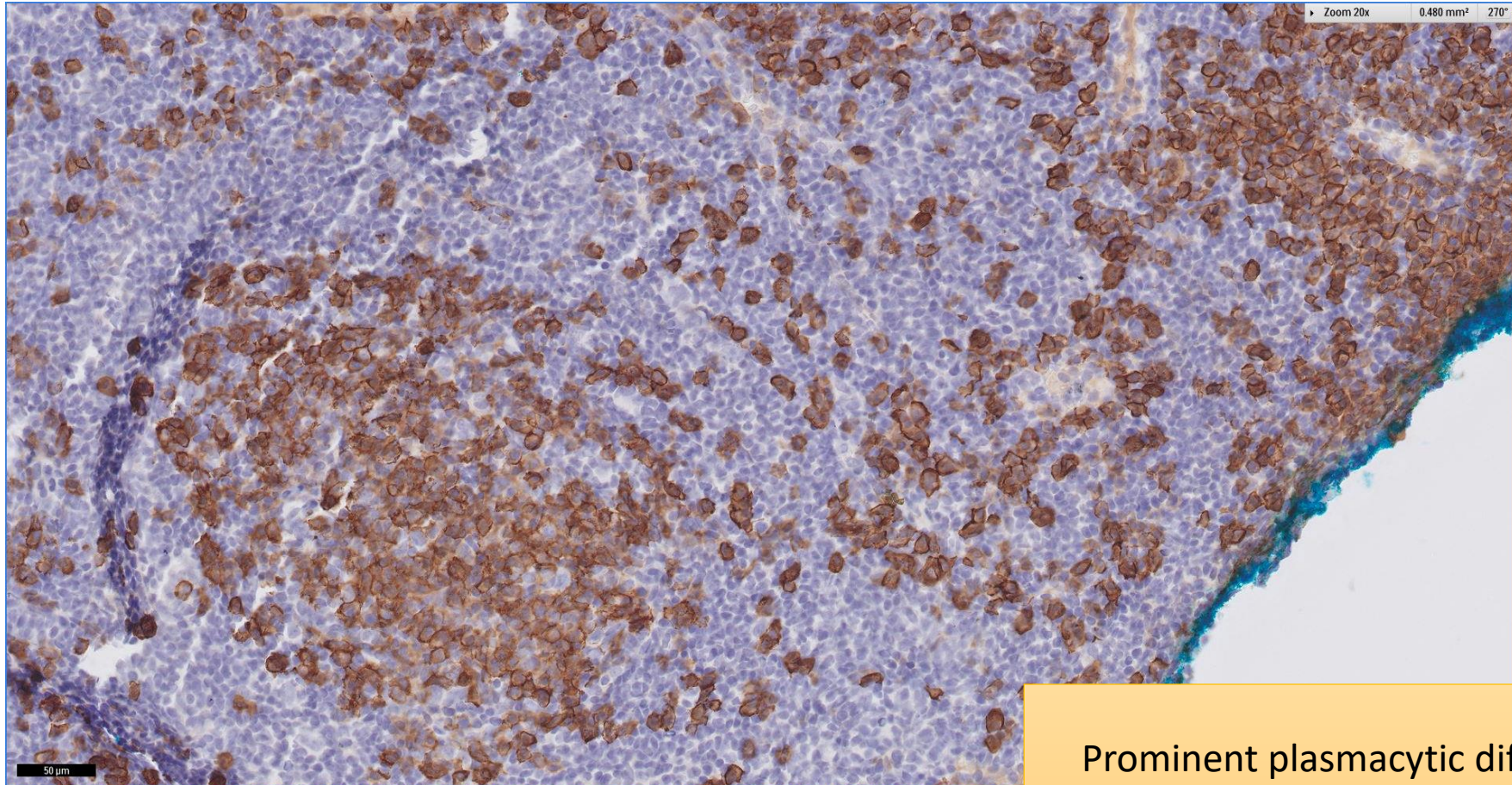
CD3 positive T-cells cannot fully account for bcl-2 expression seen in the preceding slide

SGH CASE 18: 17RE124 CD138



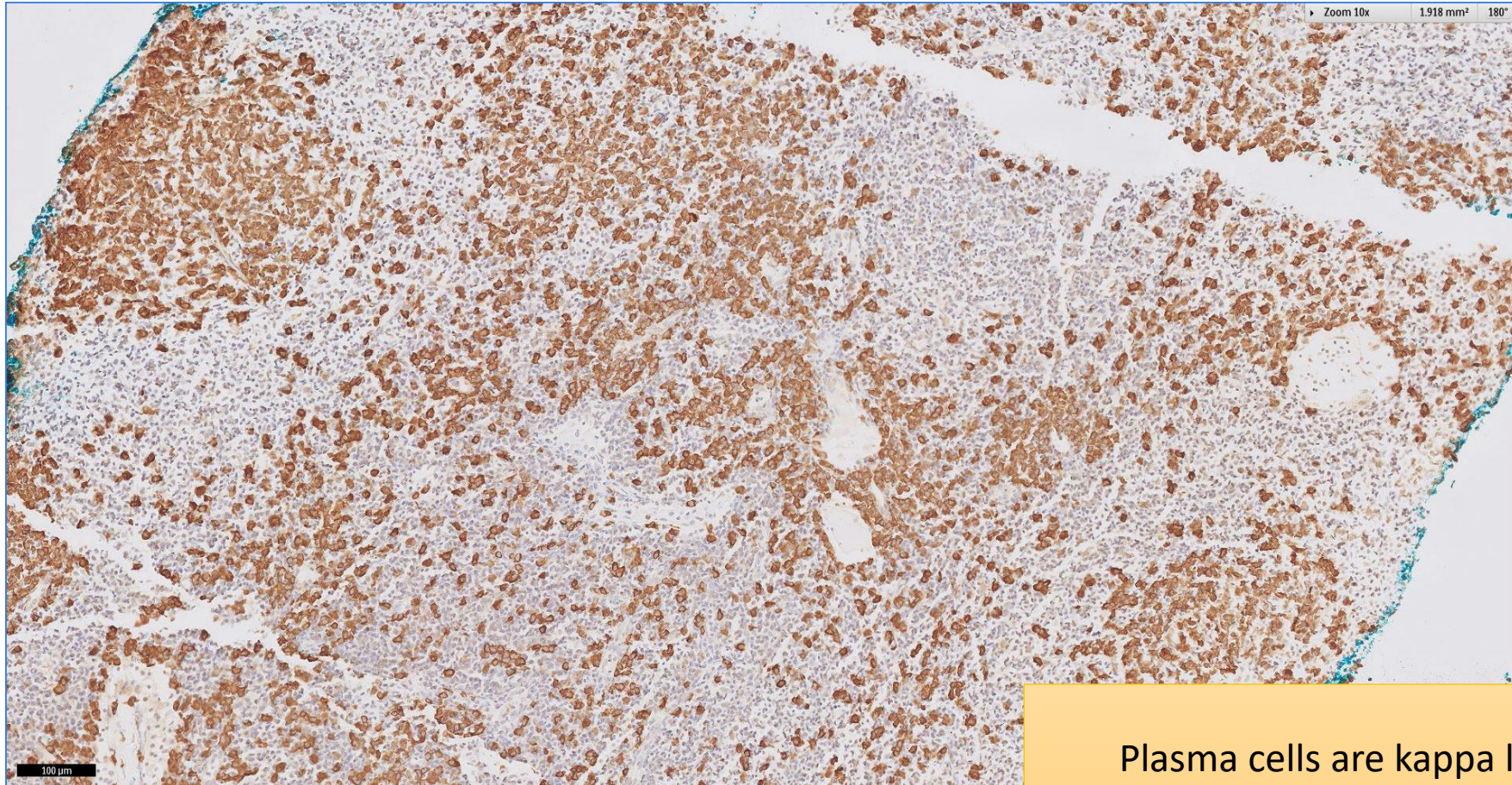
Prominent plasmacytic differentiation
highlighted by CD138

SGH CASE 18: 17RE124 CD138



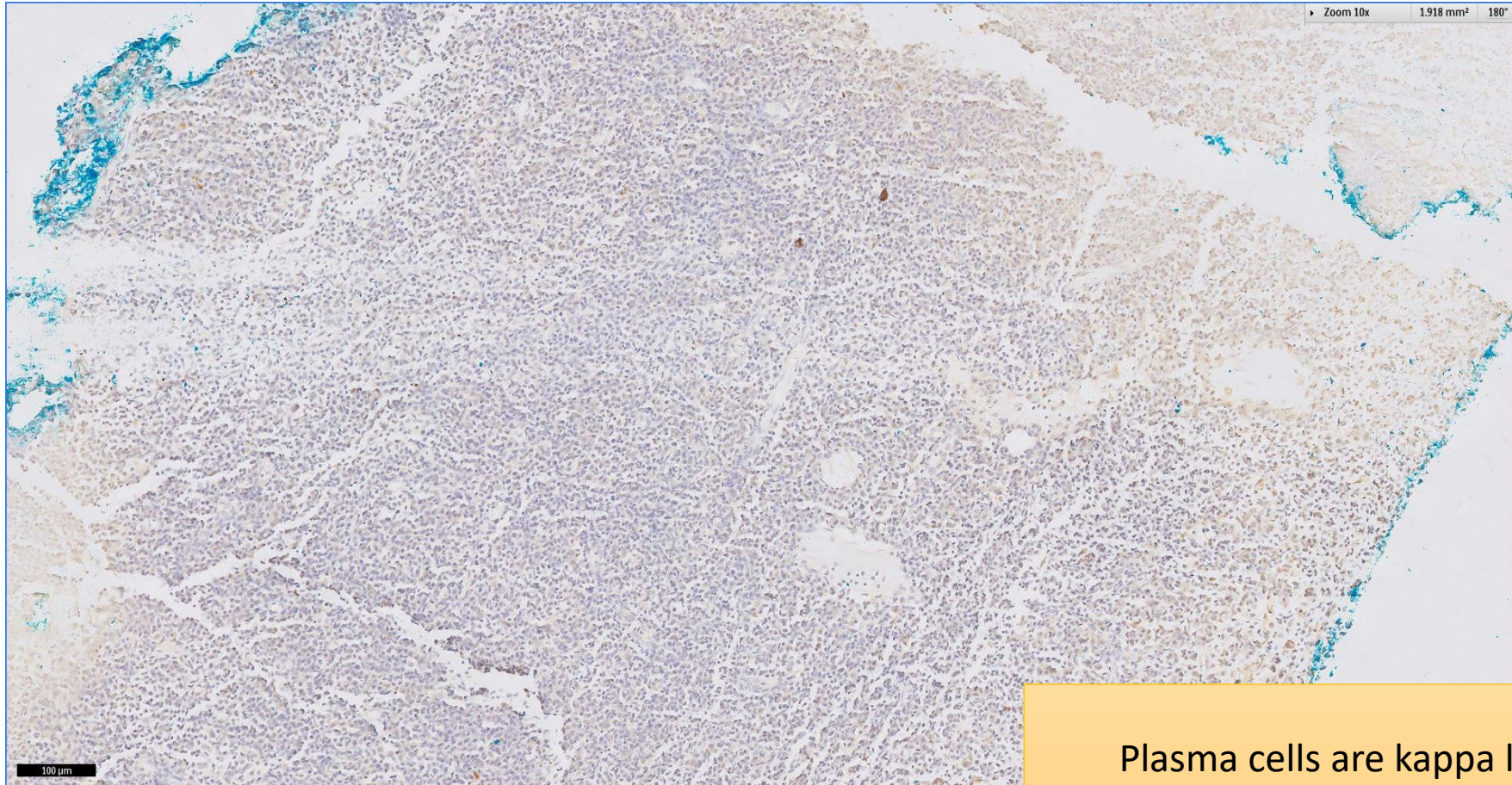
Prominent plasmacytic differentiation
highlighted by CD138

SGH CASE 18: 17RE124 KAPPA-ISH



Plasma cells are kappa light chain restricted

SGH CASE 18: 17RE124 LAMBDA-ISH



Plasma cells are kappa light chain restricted

SGH CASE 18: 17RE124

- Diagnosis
 - Low grade follicular lymphoma with plasmacytic differentiation, CD10 negative