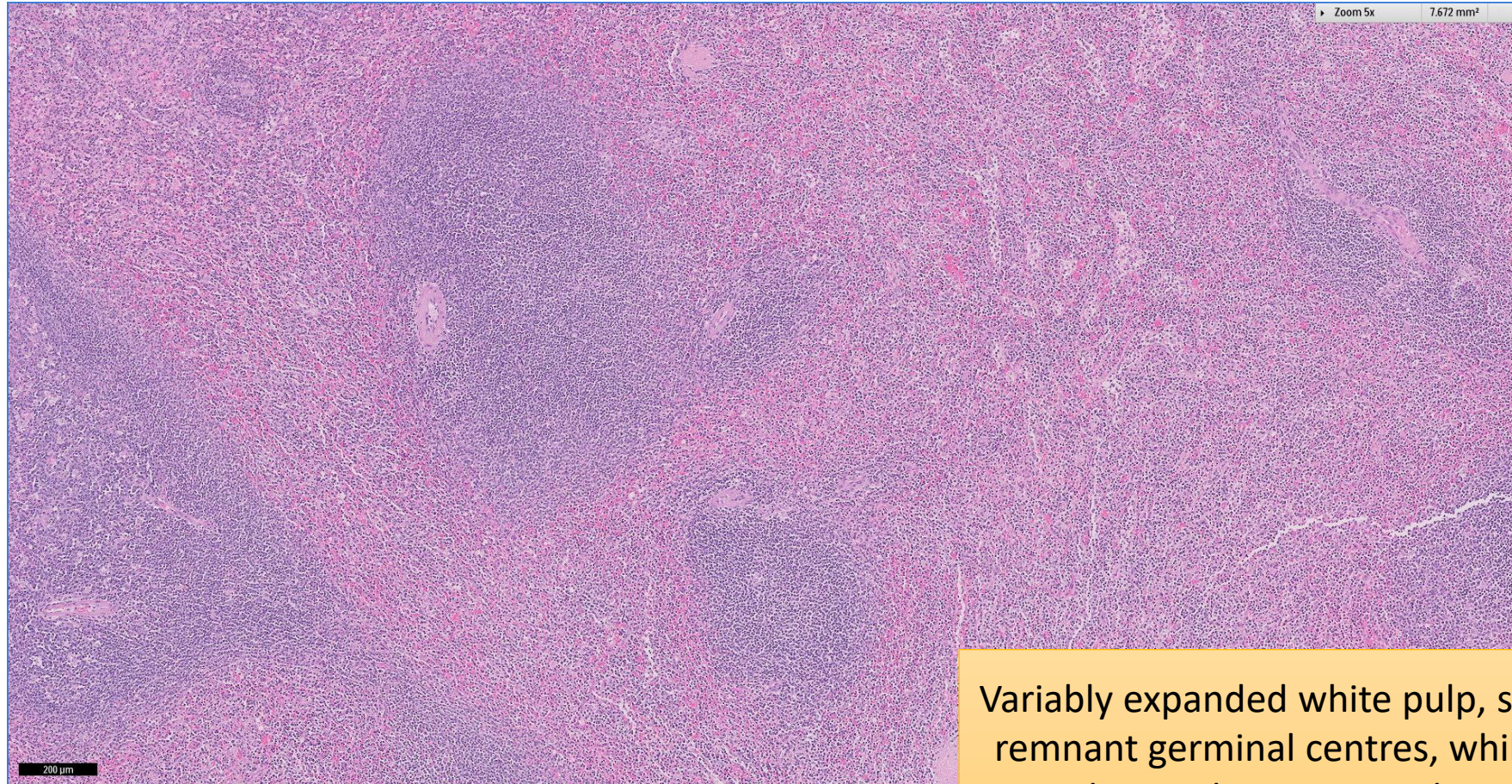


# SGH CASE 16: 17RE122

- Clinical History:
  - 40 years old . Male. Splenomegaly.
- Specimen:
  - Splenectomy.



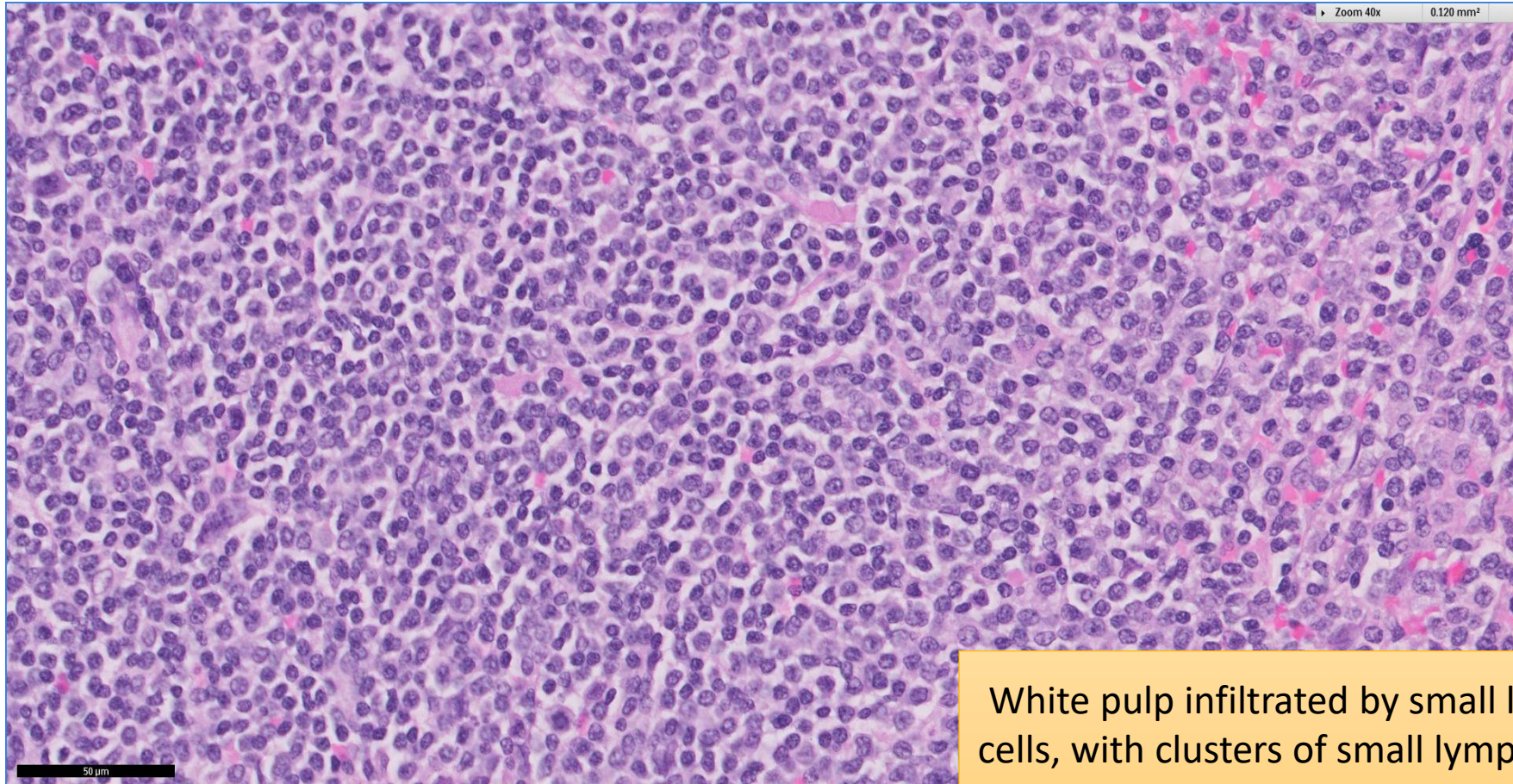
# SGH CASE 16: 17RE122 SPLEEN H&E



Variably expanded white pulp, some with remnant germinal centres, while others do not show germinal centres



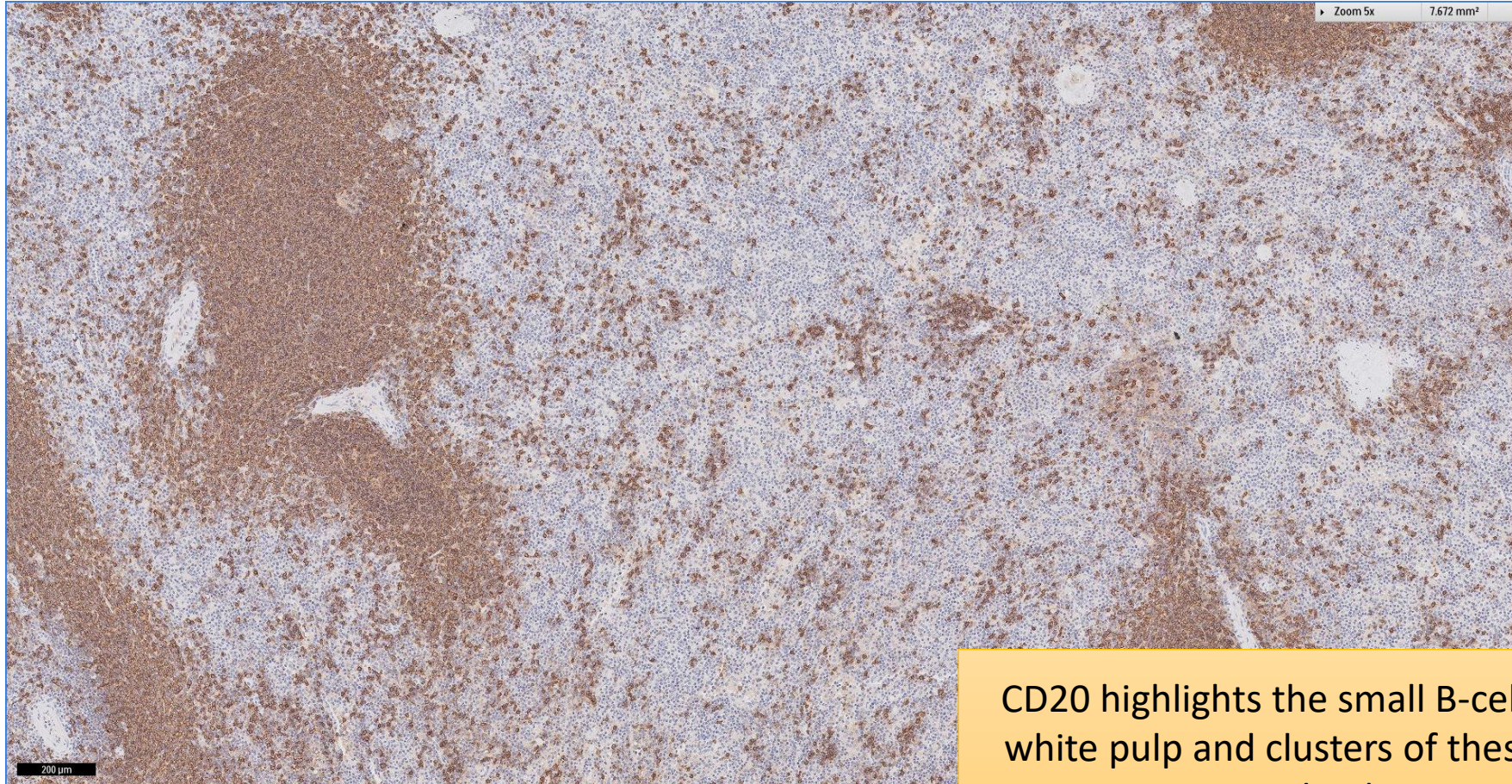
# SGH CASE 16: 17RE122 SPLEEN H&E



White pulp infiltrated by small lymphoid cells, with clusters of small lymphoid cells present in the red pulp



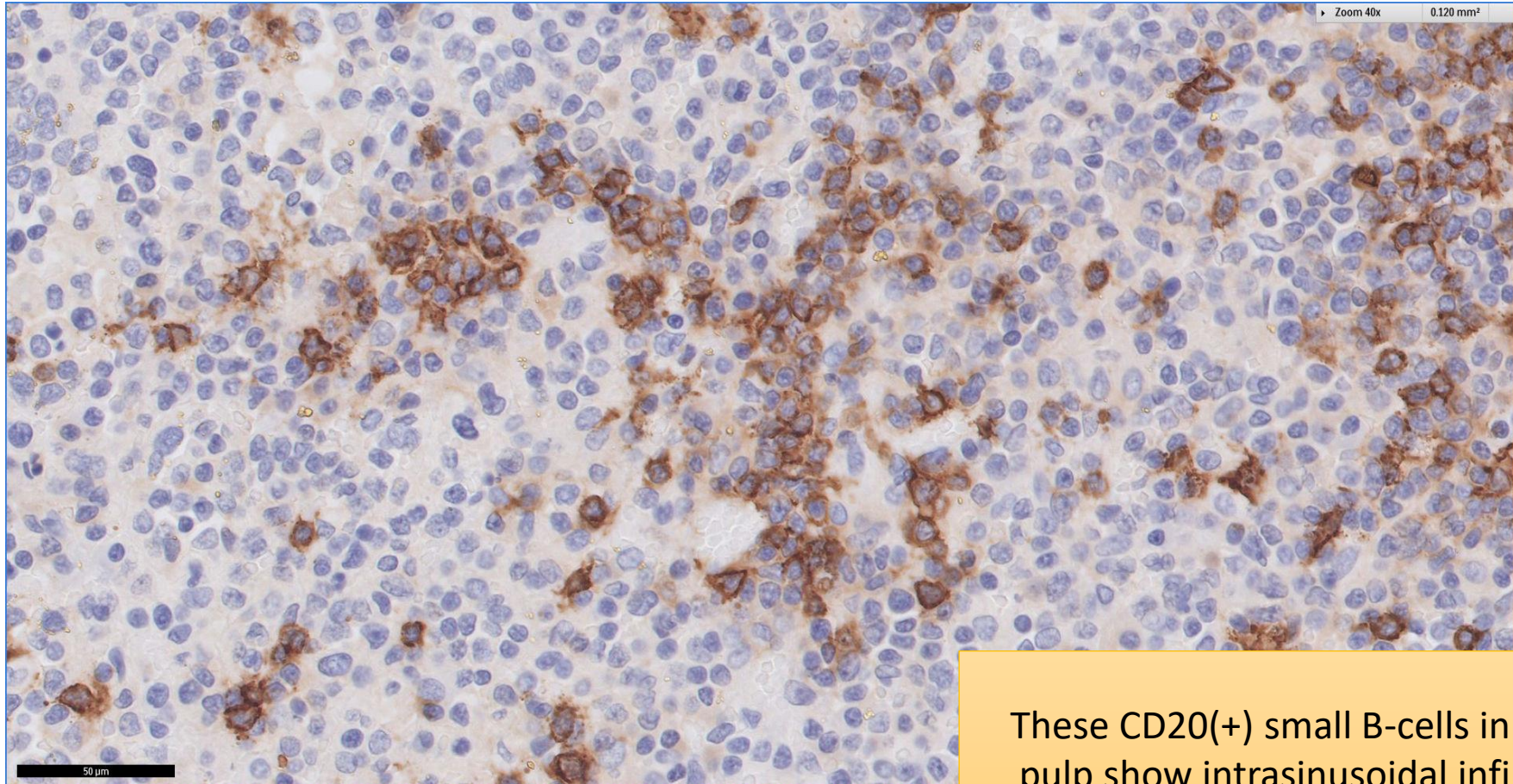
# SGH CASE 16: 17RE122 SPLEEN CD20



CD20 highlights the small B-cells in the white pulp and clusters of these in the red pulp



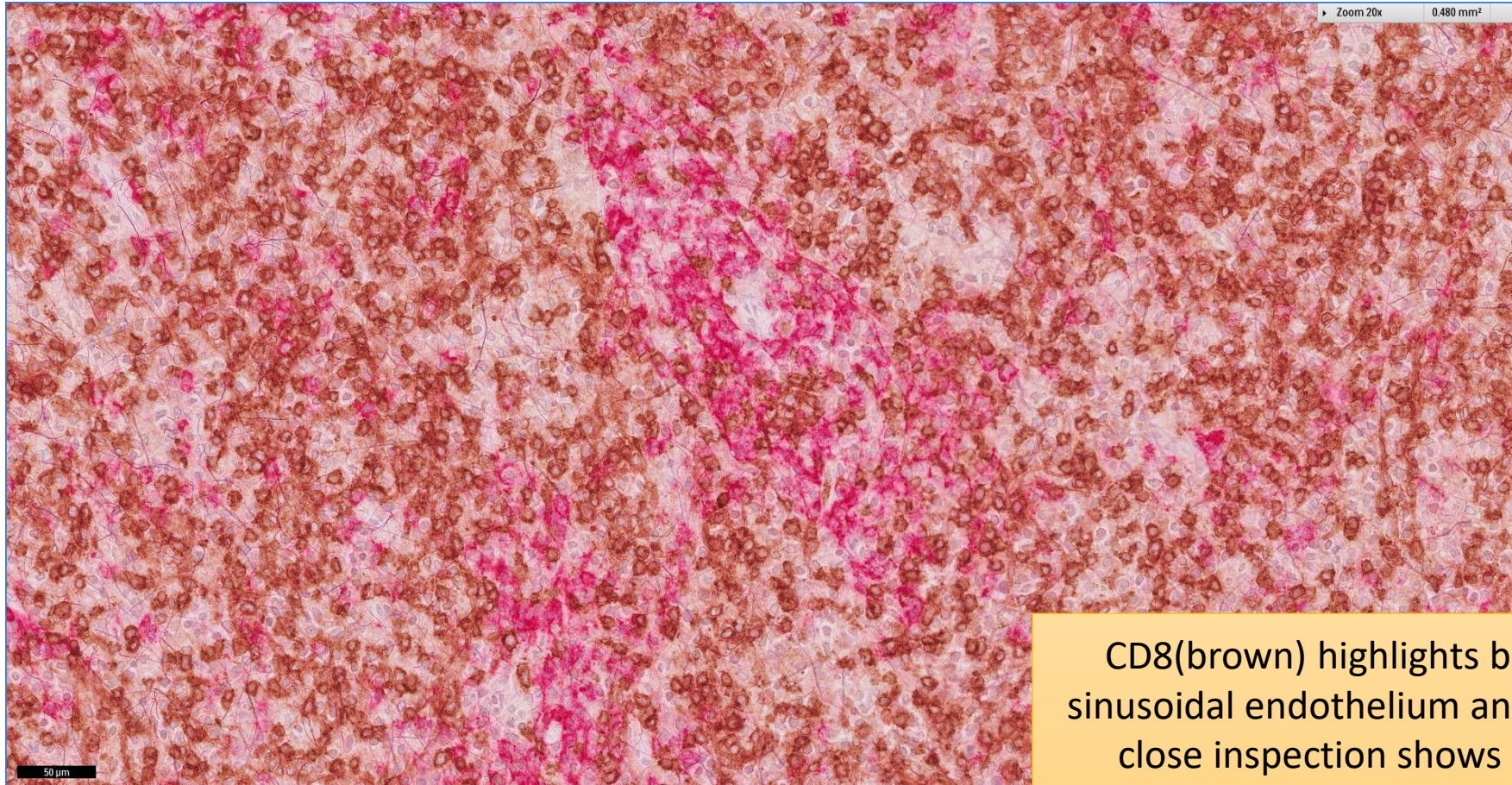
# SGH CASE 16: 17RE122 SPLEEN CD20



These CD20(+) small B-cells in the red pulp show intrasinusoidal infiltration



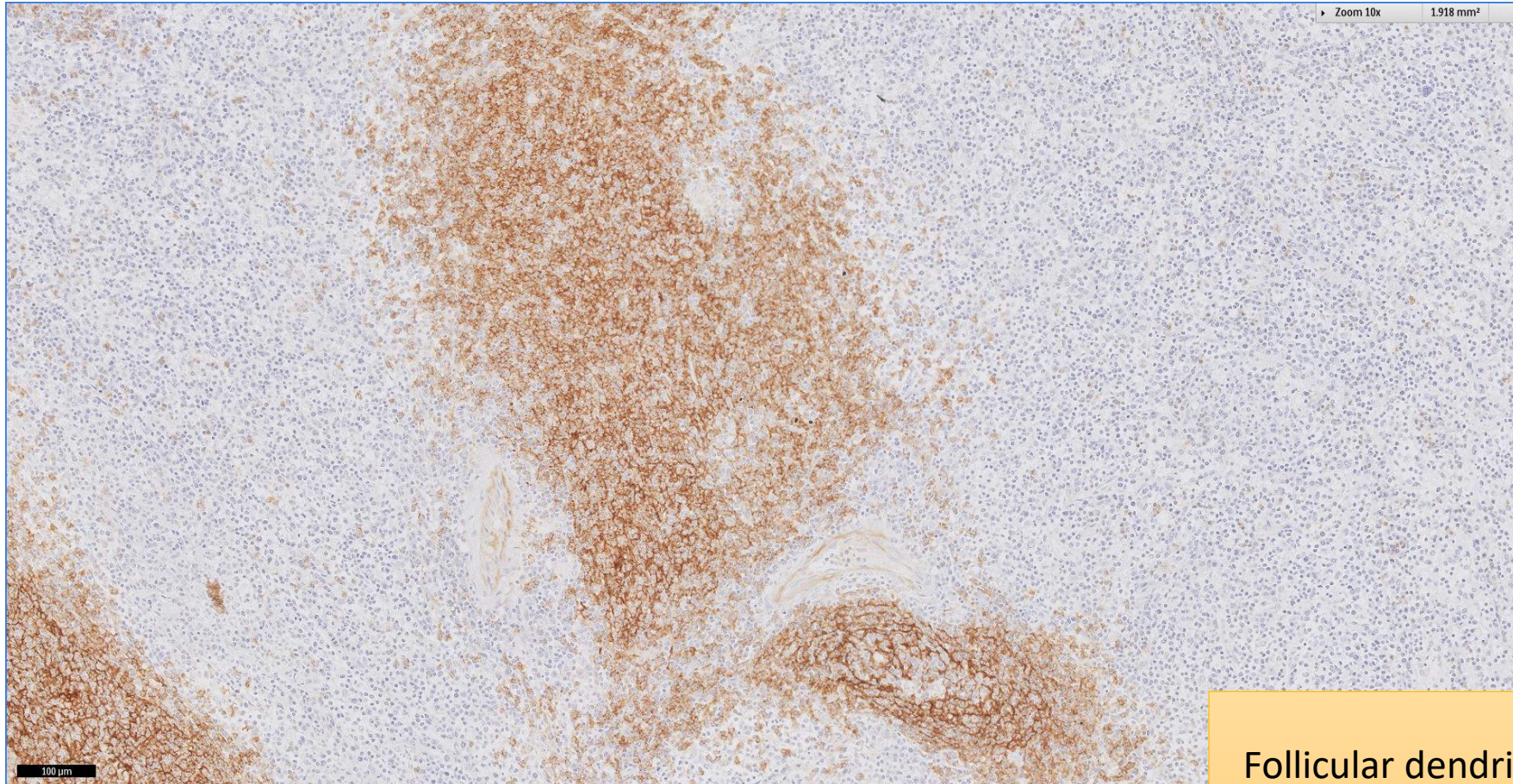
# SGH CASE 16: 17RE122 SPLEEN CD20(RED) CD8(BROWN)



CD8(brown) highlights both splenic sinusoidal endothelium and T-cells, and close inspection shows CD20(red) positive B-cells with intrasinusoidal association



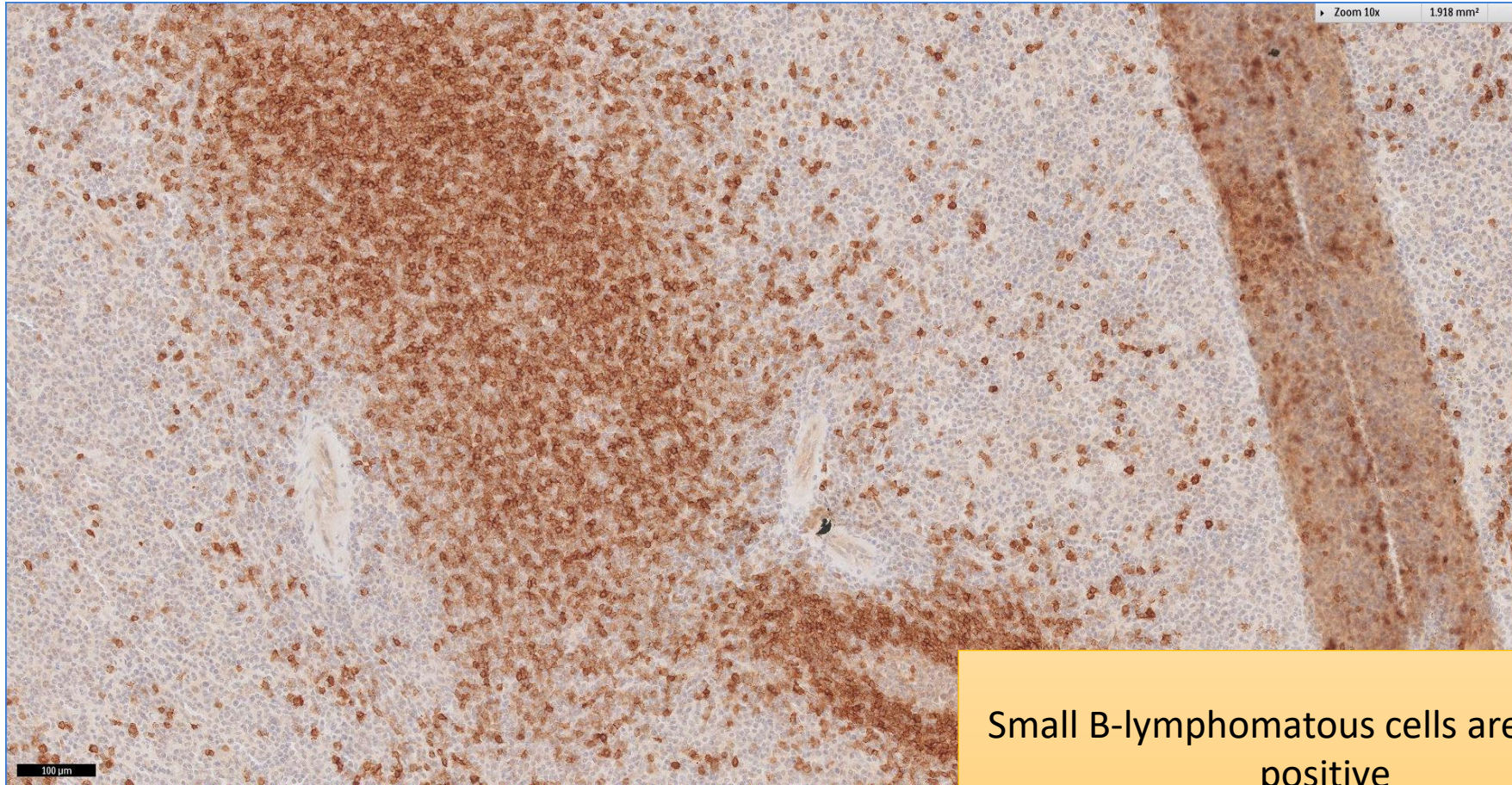
# SGH CASE 16: 17RE122 SPLEEN CD21



Follicular dendritic meshworks  
are mildly expanded



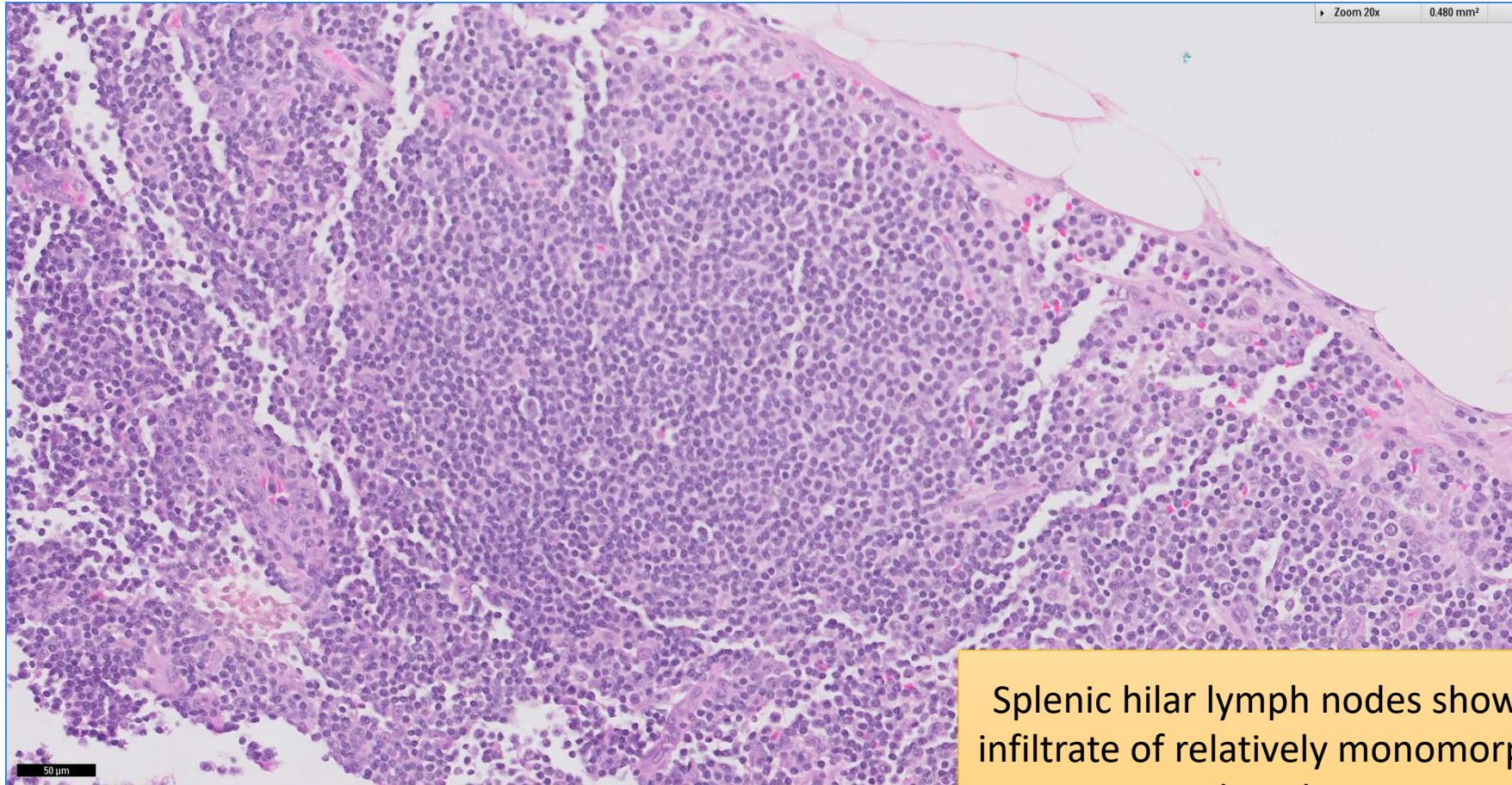
# SGH CASE 16: 17RE122 SPLEEN IGD



Small B-lymphomatous cells are also IgD positive



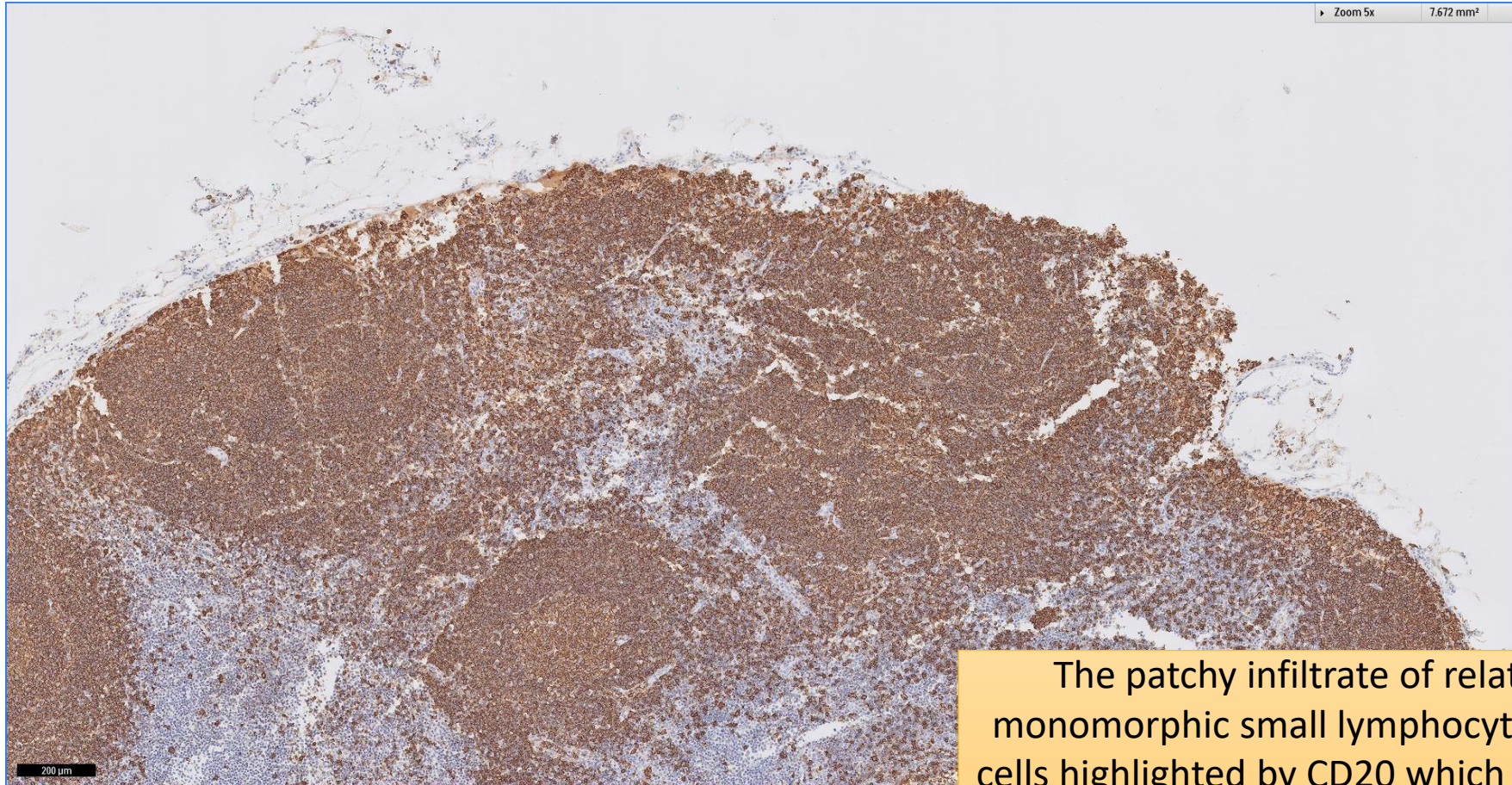
# SGH CASE 16: 17RE122 LYMPH NODE H&E



Splenic hilar lymph nodes shows patchy infiltrate of relatively monomorphic small lymphocytes



# SGH CASE 16: 17RE122 LYMPH NODE CD20



The patchy infiltrate of relatively monomorphic small lymphocytes are B-cells highlighted by CD20 which coalesces follicles



# SGH CASE 16: 17RE122 LYMPH NODE CD21



The B-lymphocytic infiltrate is associated with variably expanded and disrupted follicular dendritic meshworks



# SGH CASE 16: 17RE122 LYMPH NODE IGD





# SGH CASE 16: 17RE122

- Diagnosis
  - Splenic Marginal Zone Lymphoma