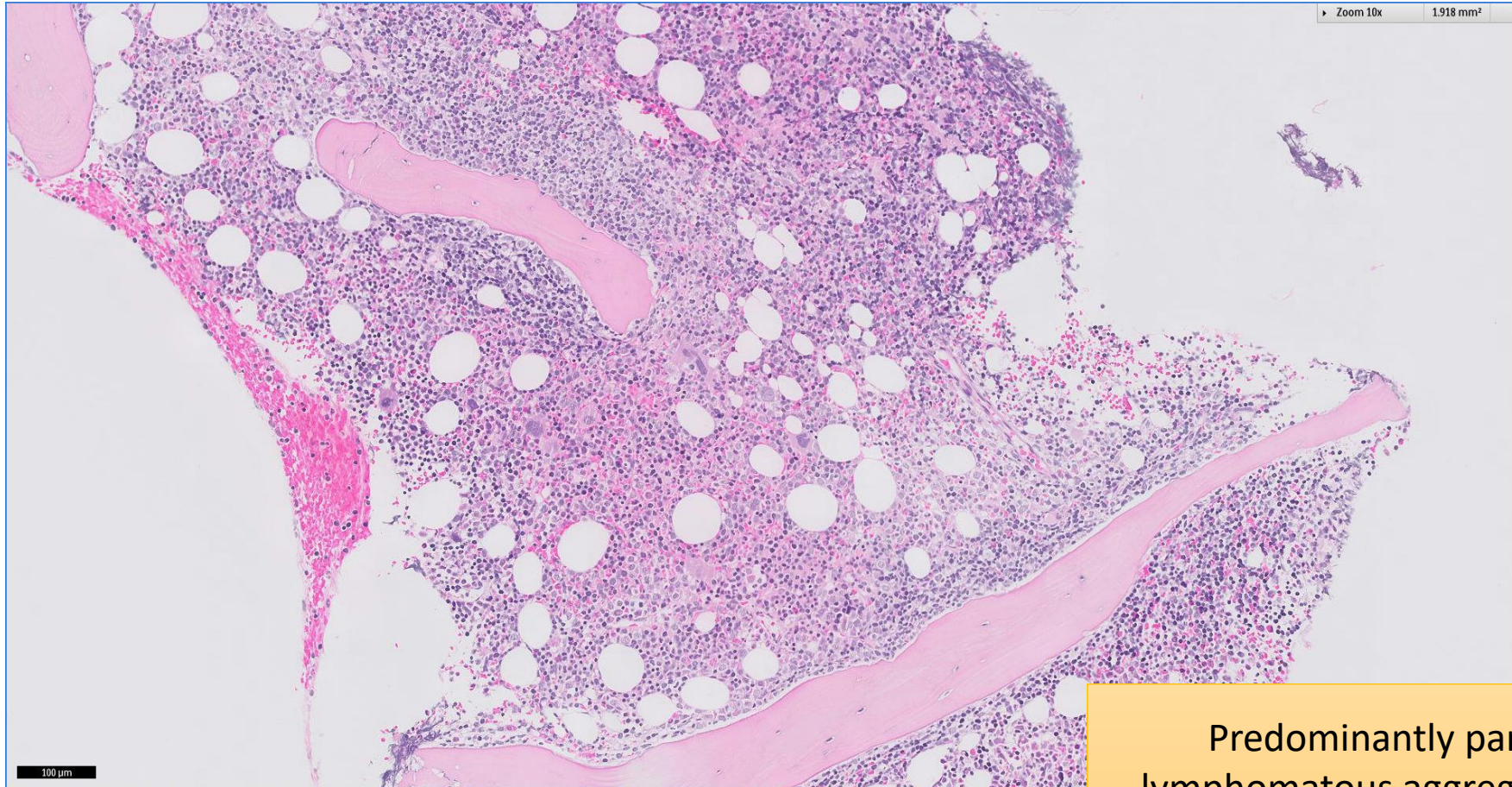


# SGH CASE 15: 17RE121

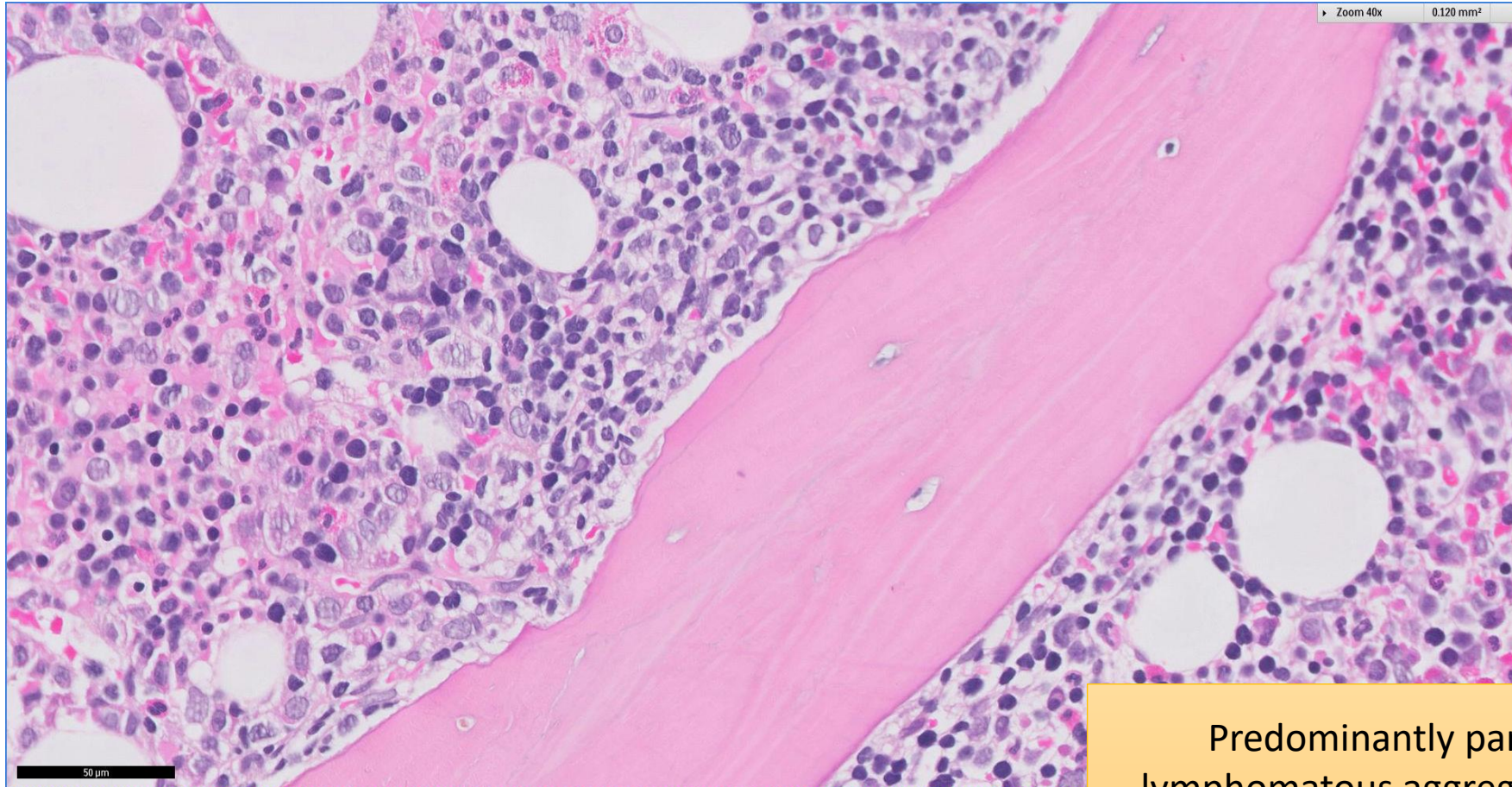
- Clinical History:
  - 40+ years old (late 40s). Female. Axillary lymphadenopathy.
- Specimen:
  - Bone marrow trephine biopsy.

# SGH CASE 15: 17RE121 H&E



Predominantly paratrabecular  
lymphomatous aggregates comprising  
mostly small dark lymphocytes

# SGH CASE 15: 17RE121 H&E



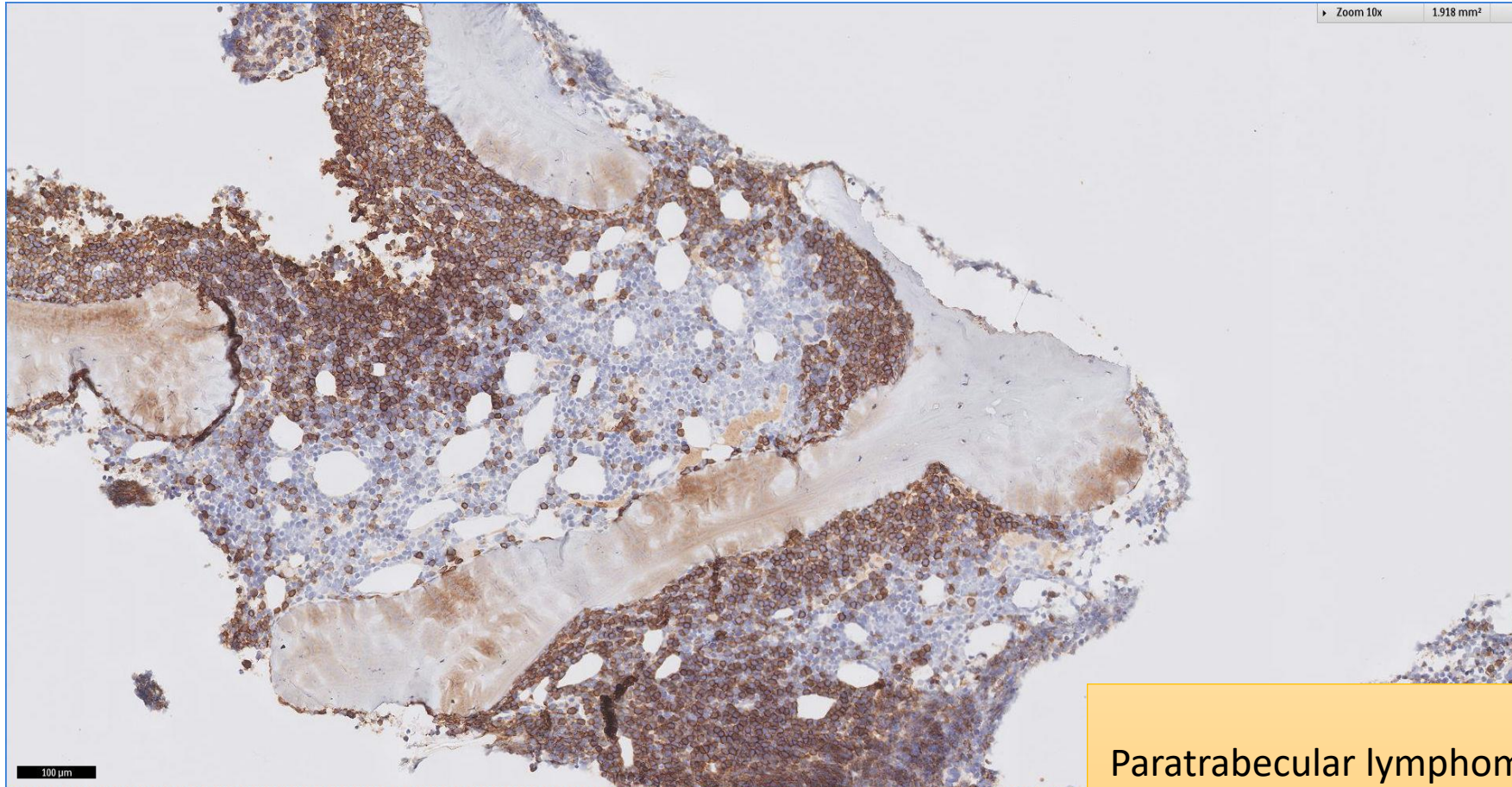
Predominantly paratrabecular  
lymphomatous aggregates comprising  
mostly small dark lymphocytes

# SGH CASE 15: 17RE121 RETIC



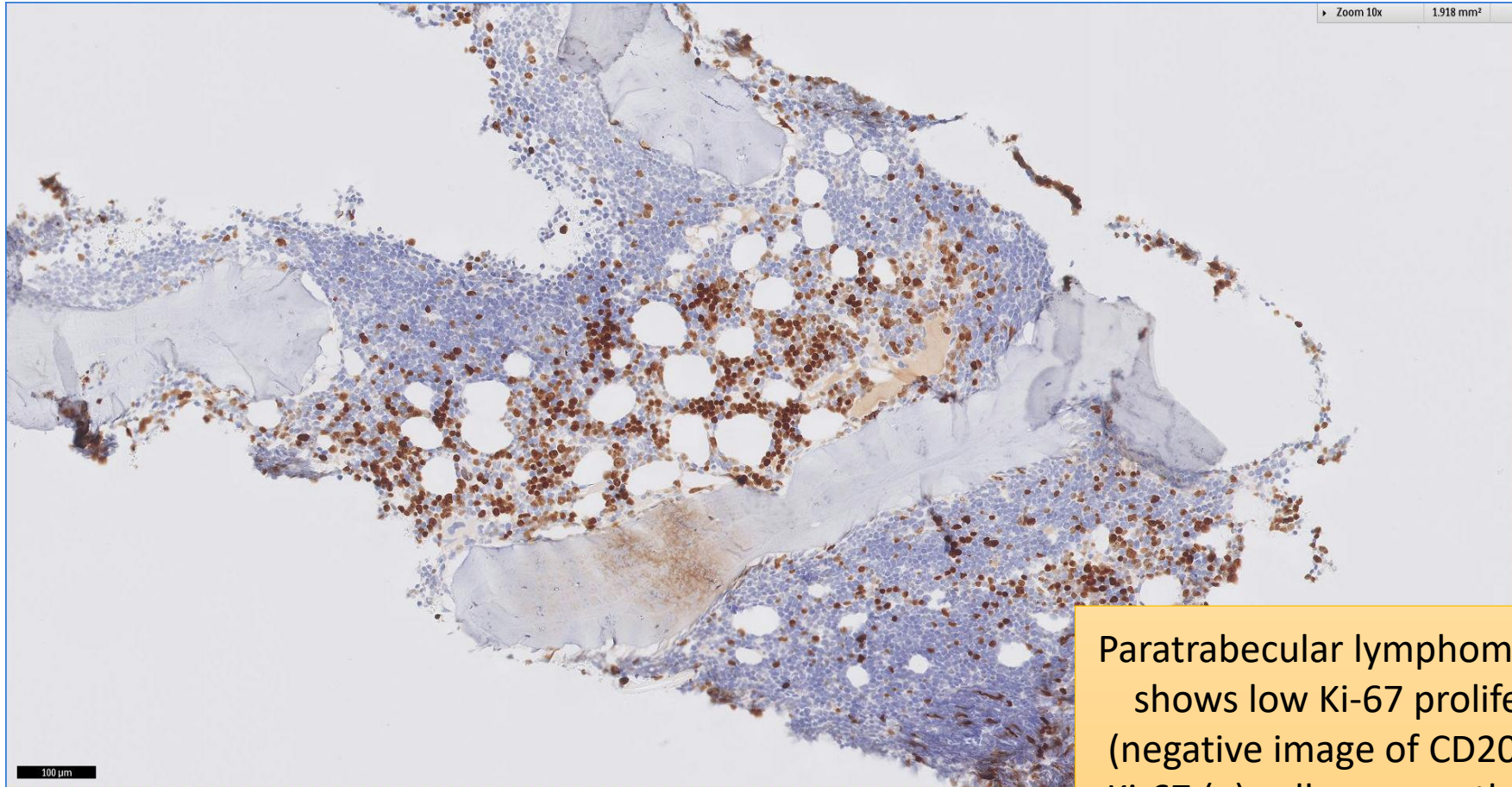
Paratrabecular lymphomatous aggregates  
accompanied by reticulin fibres

# SGH CASE 15: 17RE121 CD20



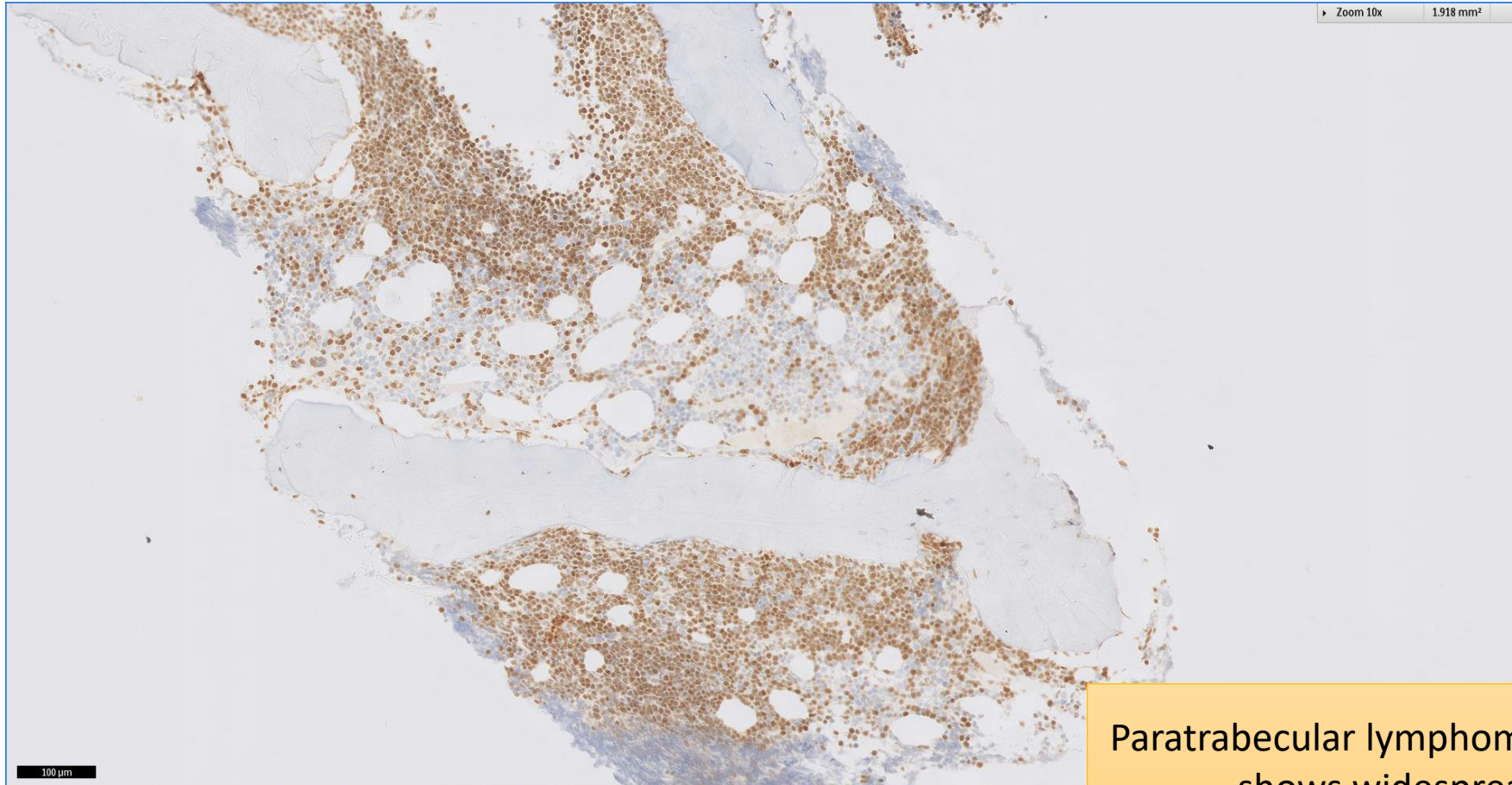
Paratrabecular lymphomatous aggregates  
are strongly positive for CD20

# SGH CASE 15: 17RE121 KI67



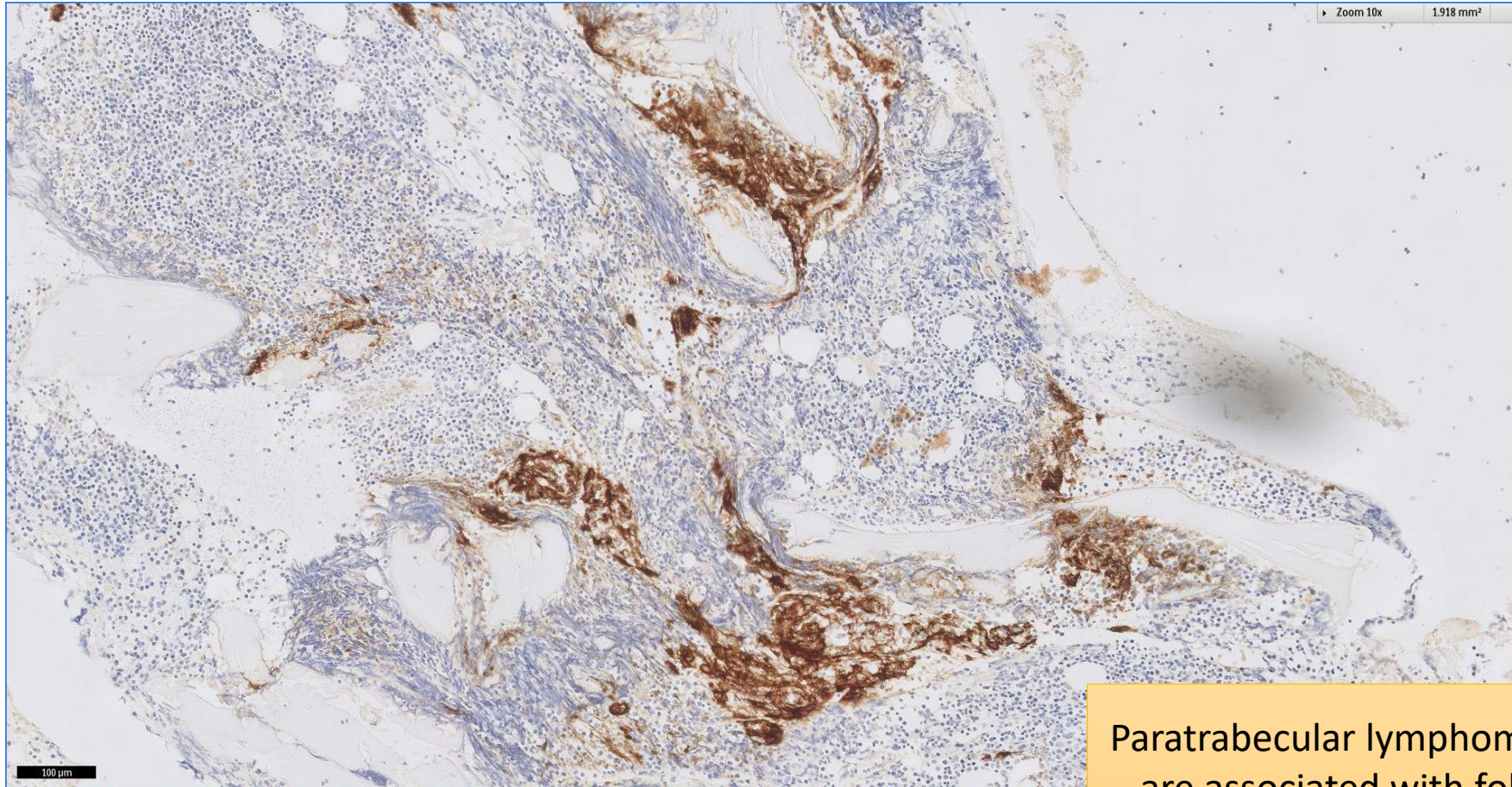
Paratrabecular lymphomatous aggregates shows low Ki-67 proliferation fraction (negative image of CD20 picture earlier). Ki-67 (+) cells are mostly haematopoietic elements

# SGH CASE 15: 17RE121 P27



Paratrabecular lymphomatous aggregates shows widespread nuclear immunoreactivity for p27

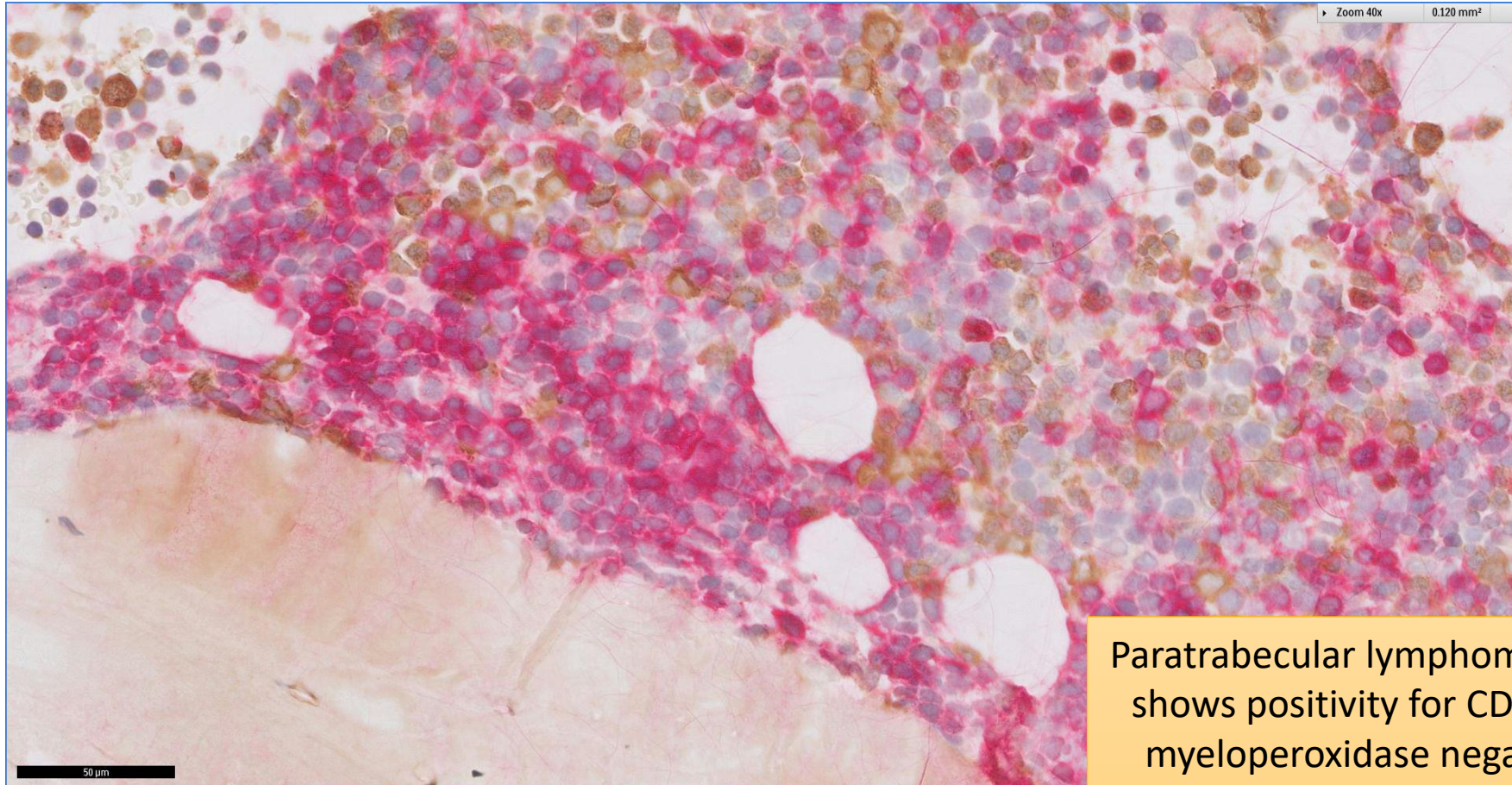
# SGH CASE 15: 17RE121 CD21



Paratrabecular lymphomatous aggregates  
are associated with follicular dendritic  
meshworks

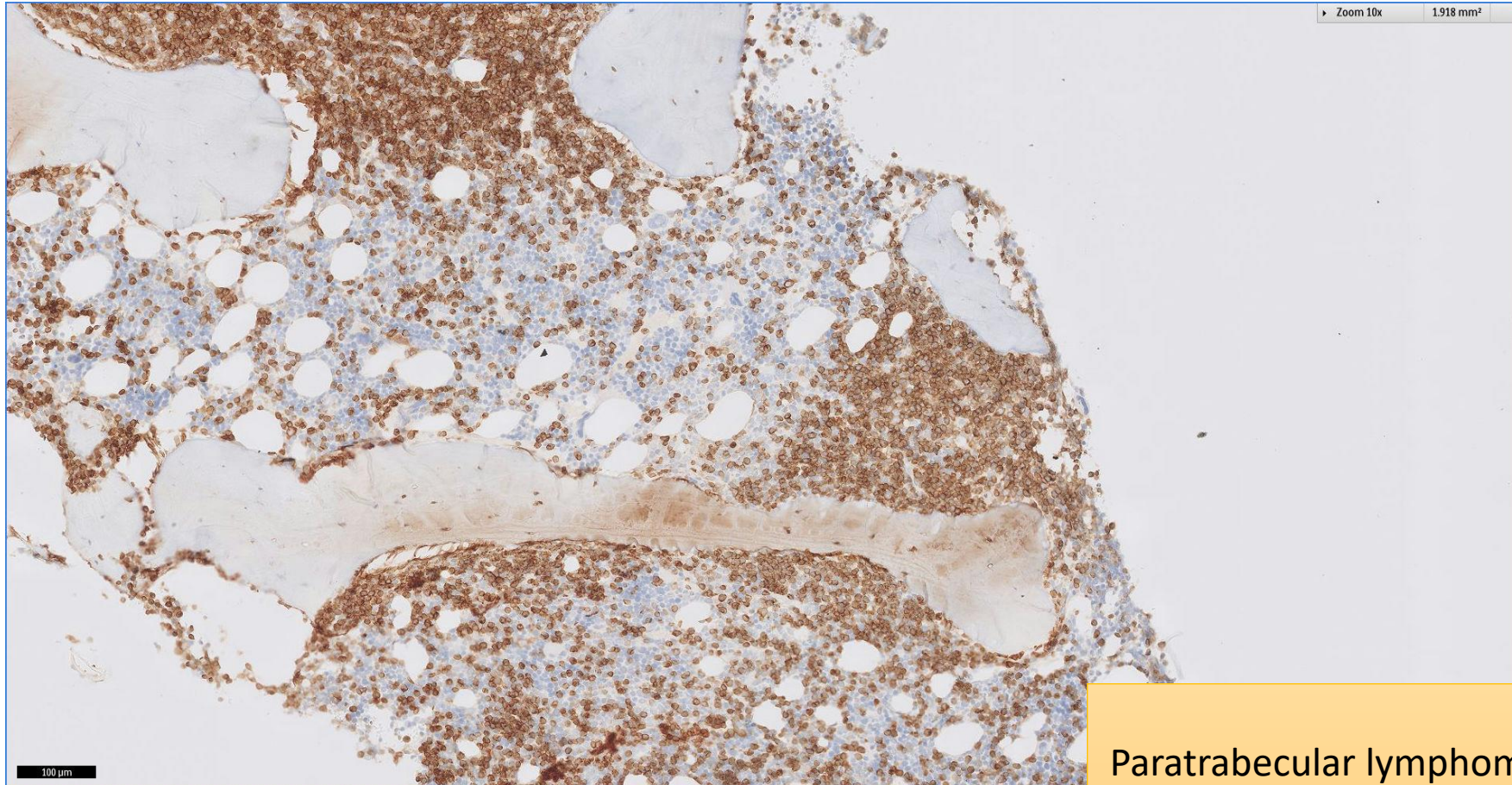
# SGH CASE 15: 17RE121

## CD10(RED) MYELOPEROXIDASE(BROWN)



Paratrabecular lymphomatous aggregates shows positivity for CD10 (red), but are myeloperoxidase negative (hence not myeloid/granulocytic cells which may be CD10 positive)

# SGH CASE 15: 17RE121 BCL2



Paratrabecular lymphomatous aggregates  
are bcl2 positive

# SGH CASE 15: 17RE121

- Diagnosis
  - Follicular Lymphoma involving the bone marrow, with partial haematopoietic effacement
- Patient has left axillary lymph node biopsy showing follicular lymphoma.