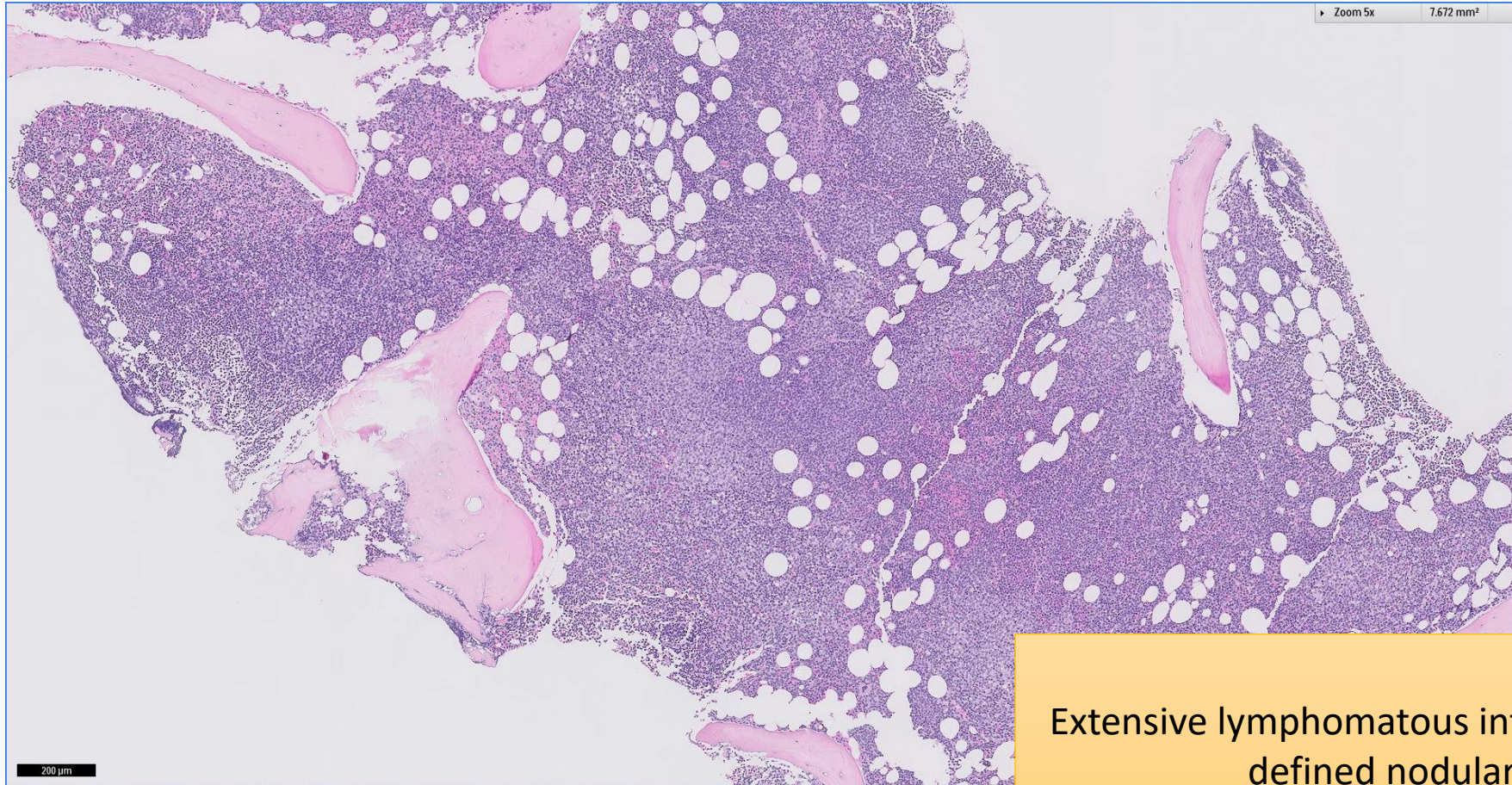


# SGH CASE 9: 17RE119

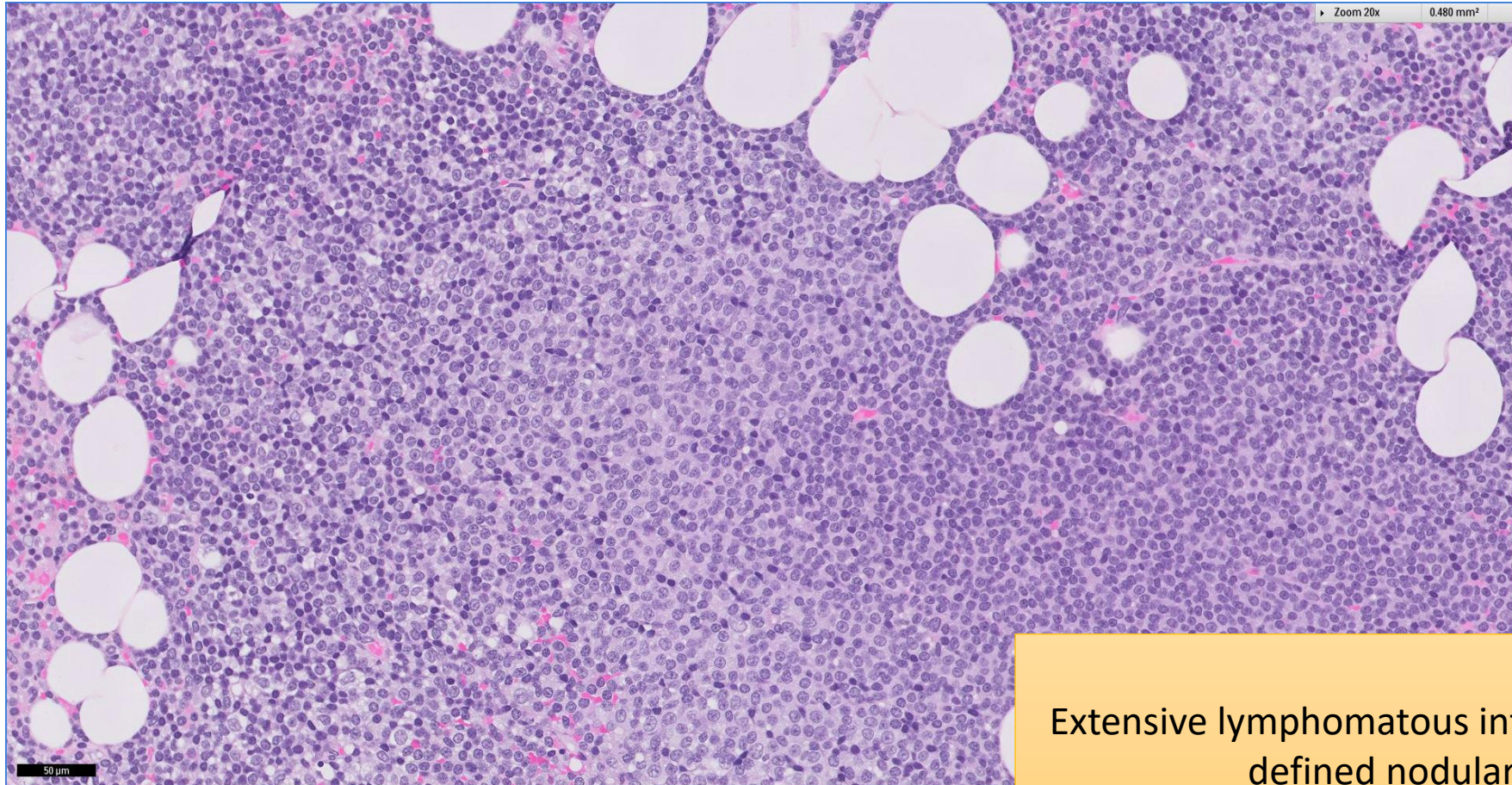
- Clinical History:
  - 50+ years old. Male. Peripheral lymphocytosis.
- Specimen:
  - Bone marrow trephine biopsy

# SGH CASE 9: 17RE119 H&E



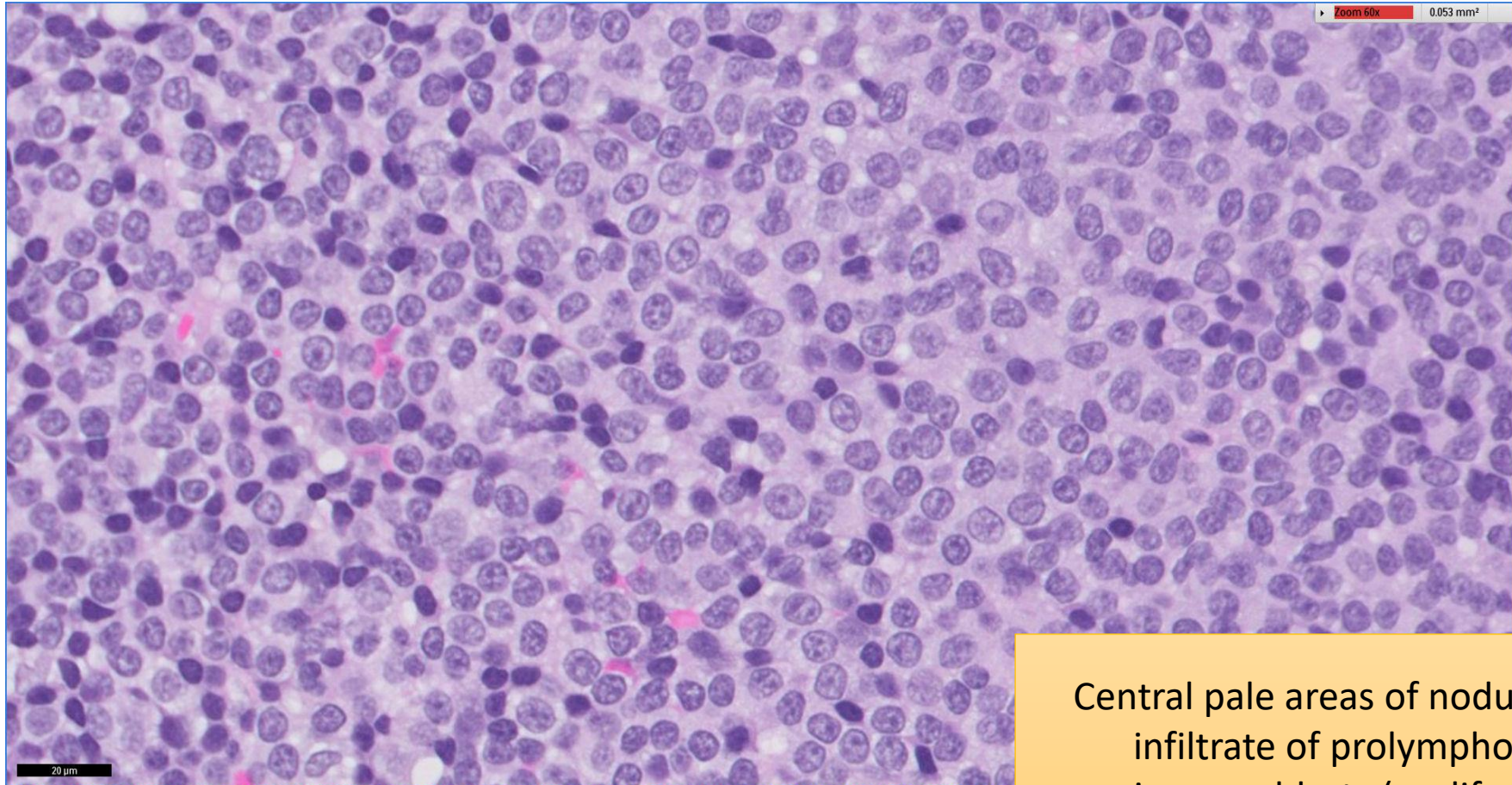
Extensive lymphomatous infiltrate with ill-defined nodularity

# SGH CASE 9: 17RE119 H&E



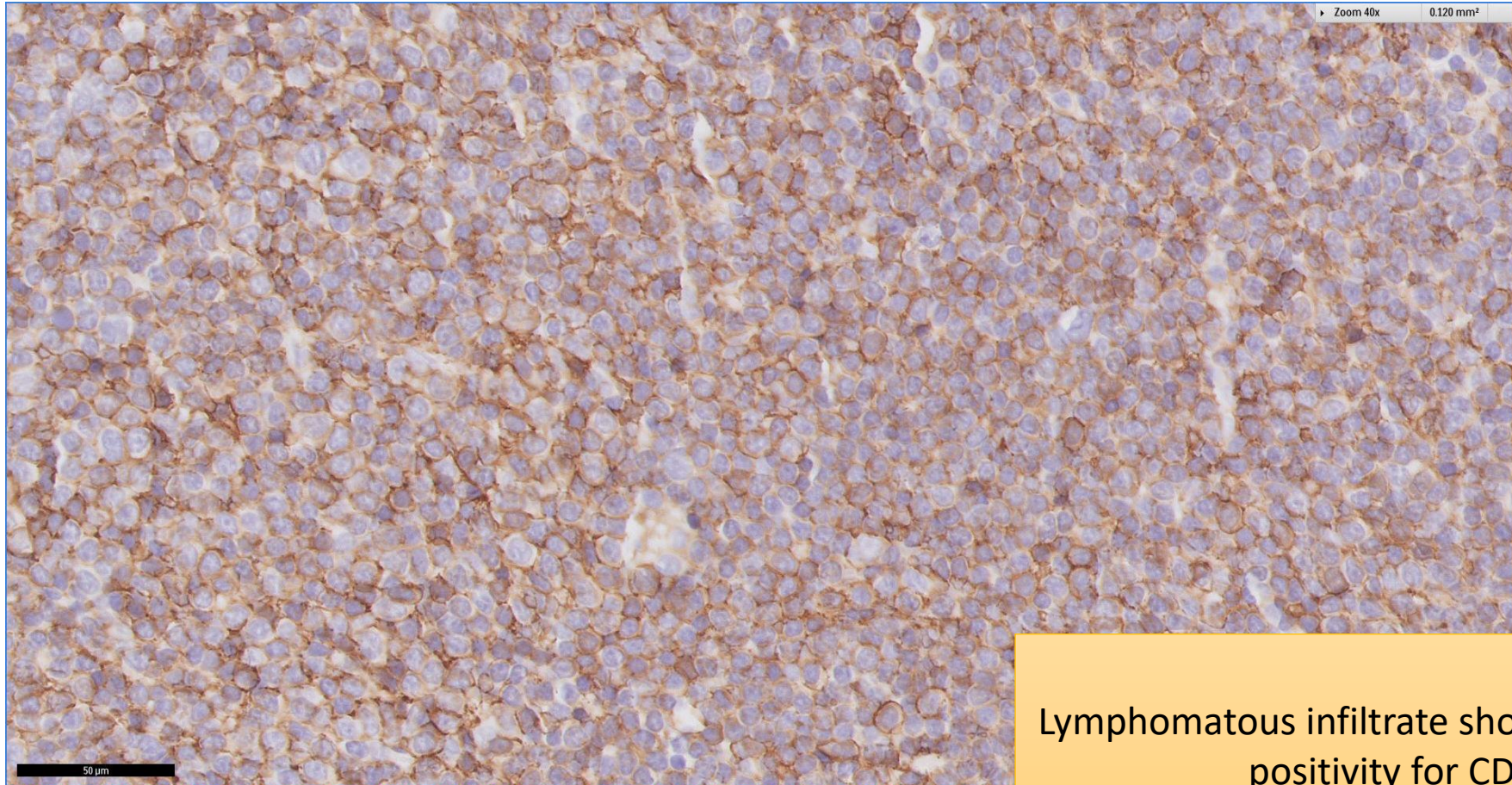
Extensive lymphomatous infiltrate with ill-defined nodularity

# SGH CASE 9: 17RE119 H&E



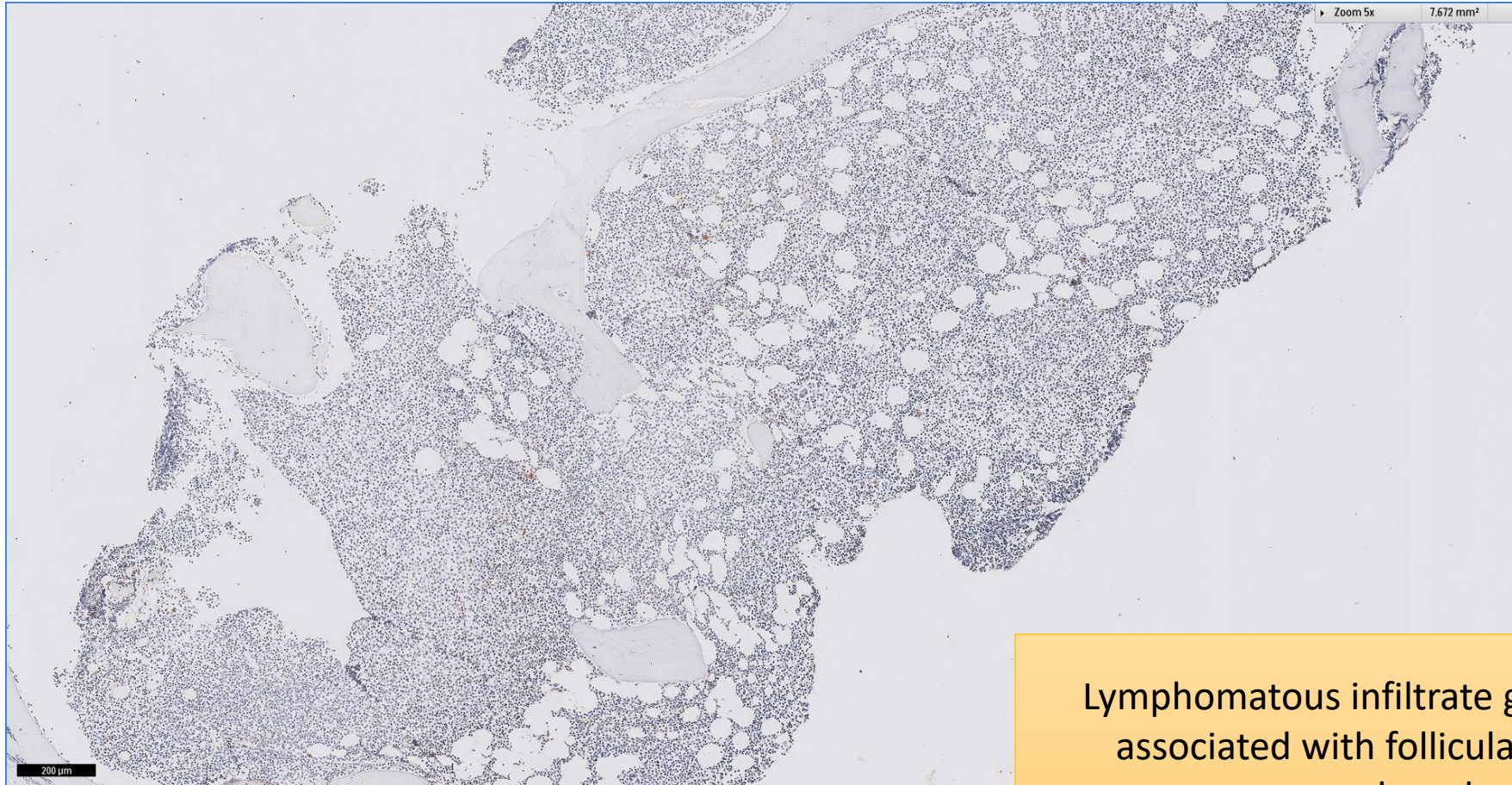
Central pale areas of nodularity include infiltrate of prolymphocytes and paraimmunoblasts (proliferation centres)

# SGH CASE 9: 17RE119 CD20



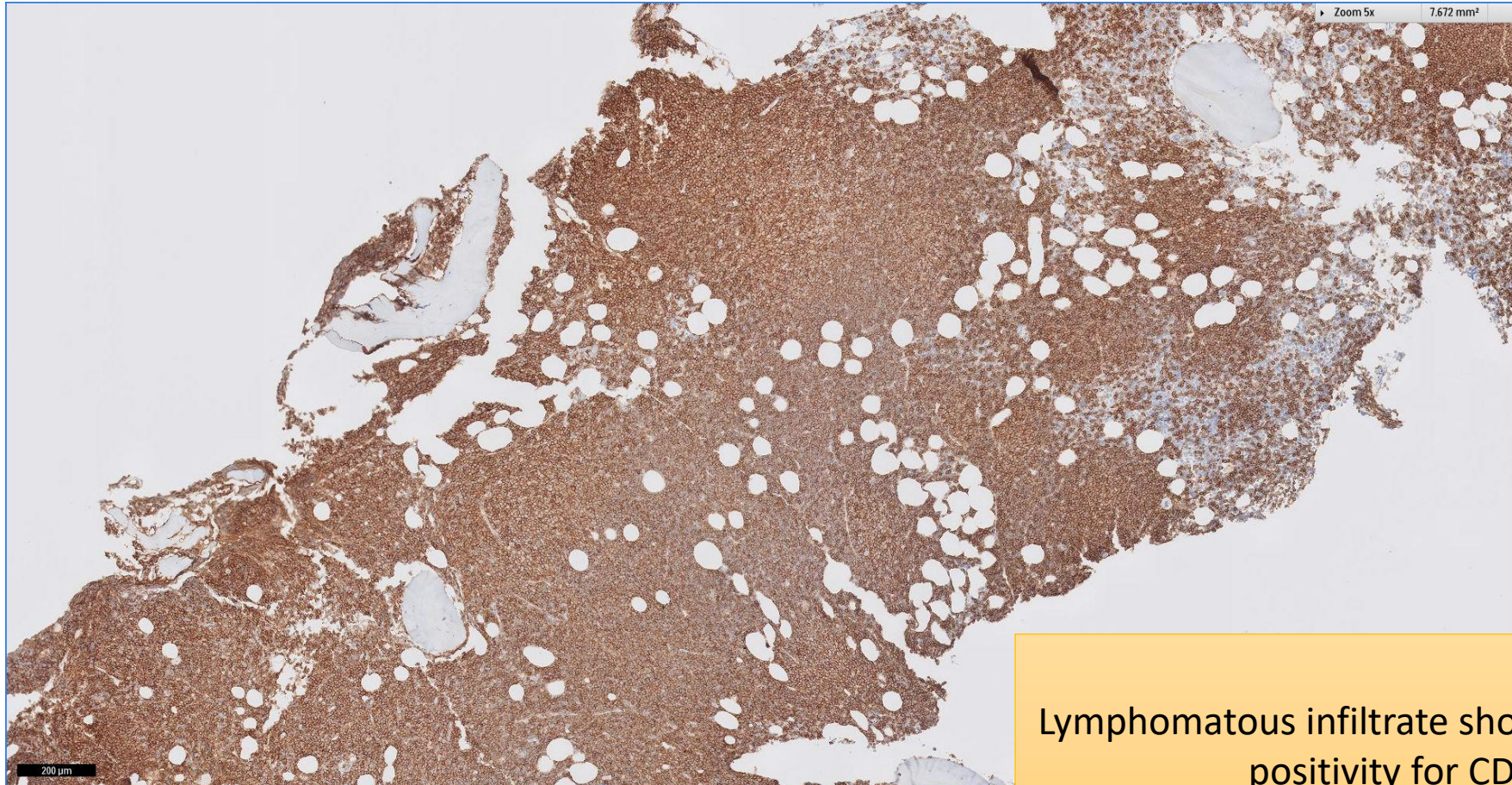
Lymphomatous infiltrate shows widespread positivity for CD20

# SGH CASE 9: 17RE119 CD21



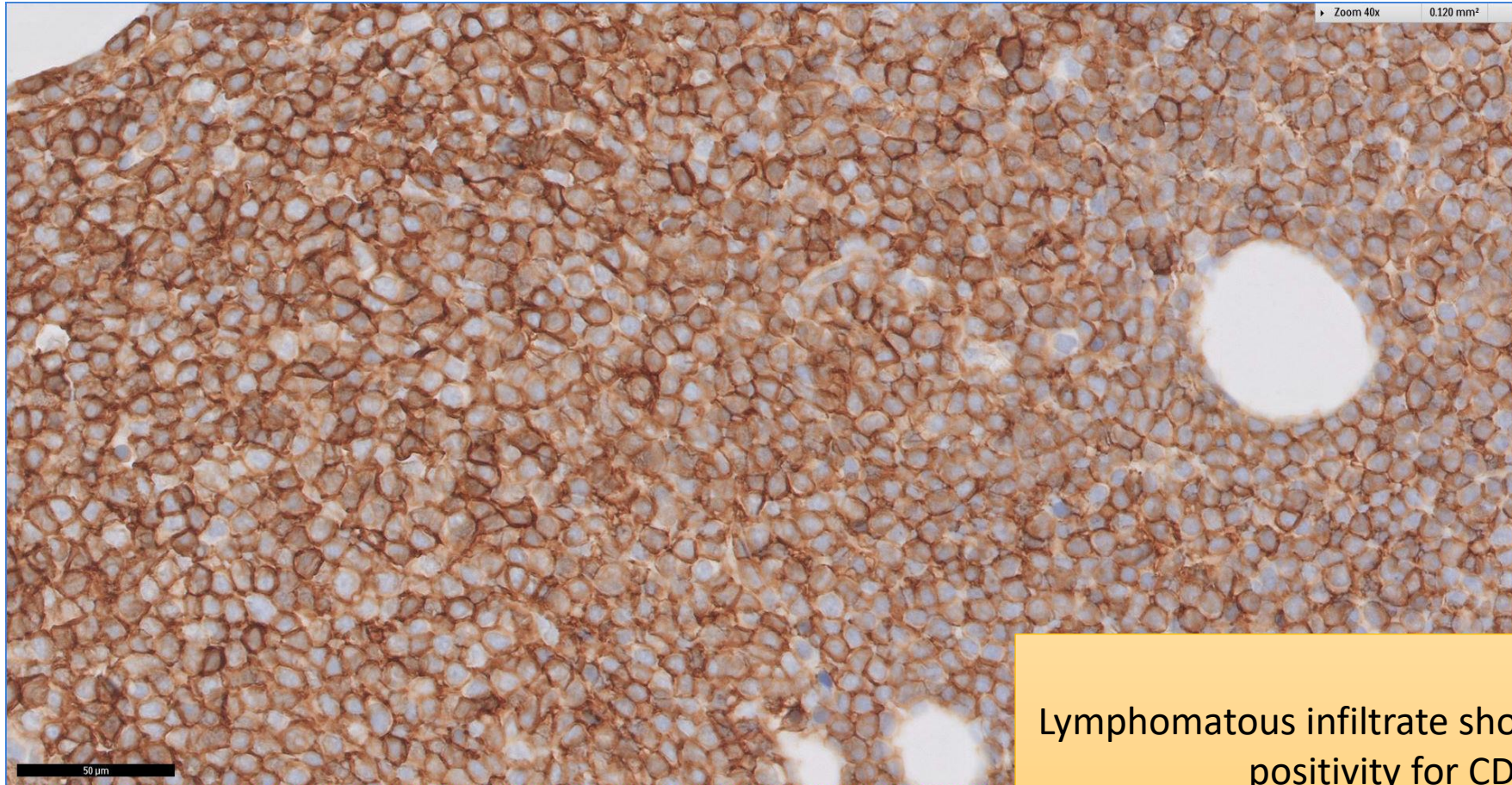
Lymphomatous infiltrate generally not associated with follicular dendritic meshworks

# SGH CASE 9: 17RE119 CD23



Lymphomatous infiltrate shows widespread positivity for CD23

# SGH CASE 9: 17RE119 CD23

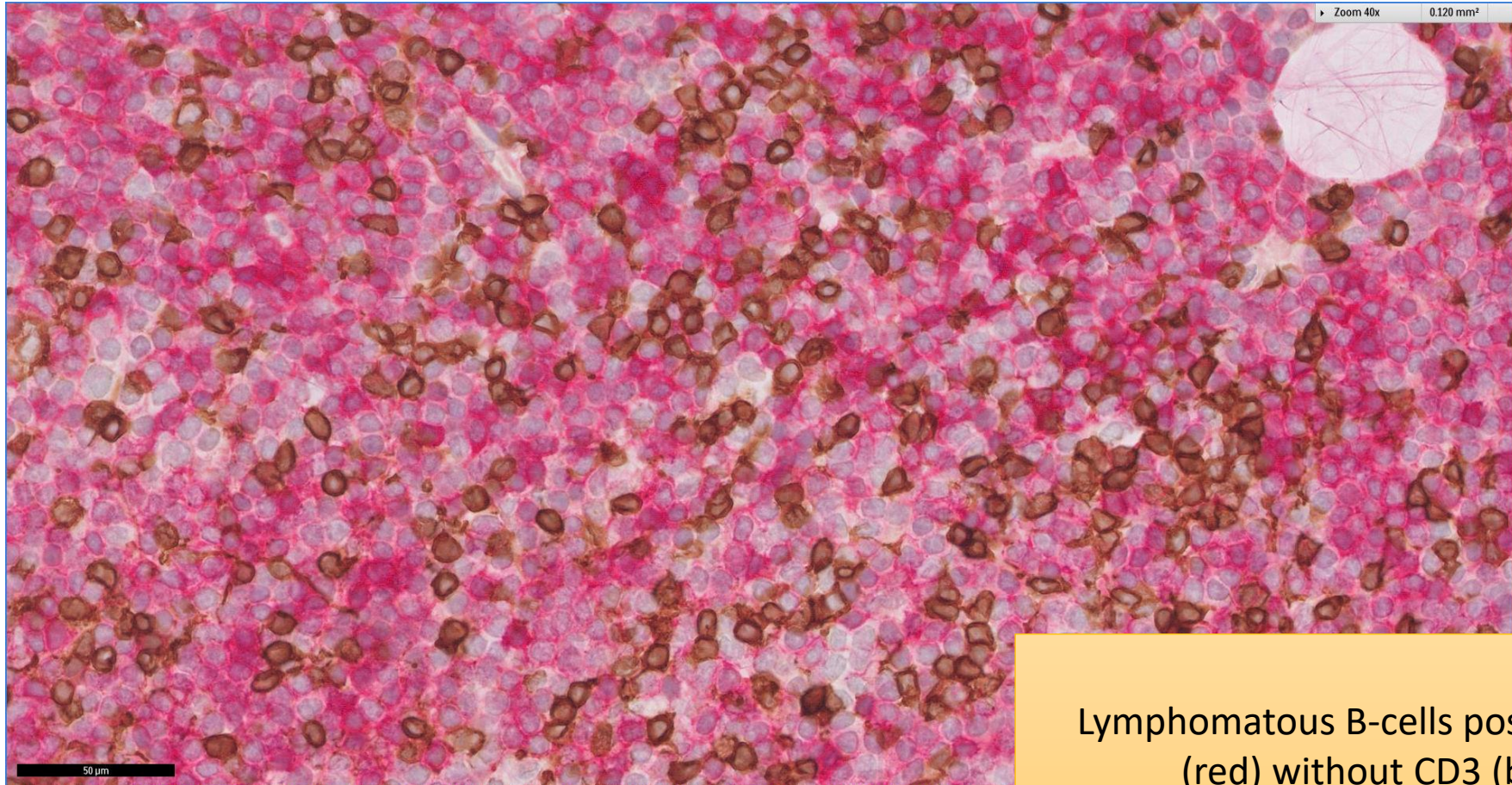


Lymphomatous infiltrate shows widespread positivity for CD23



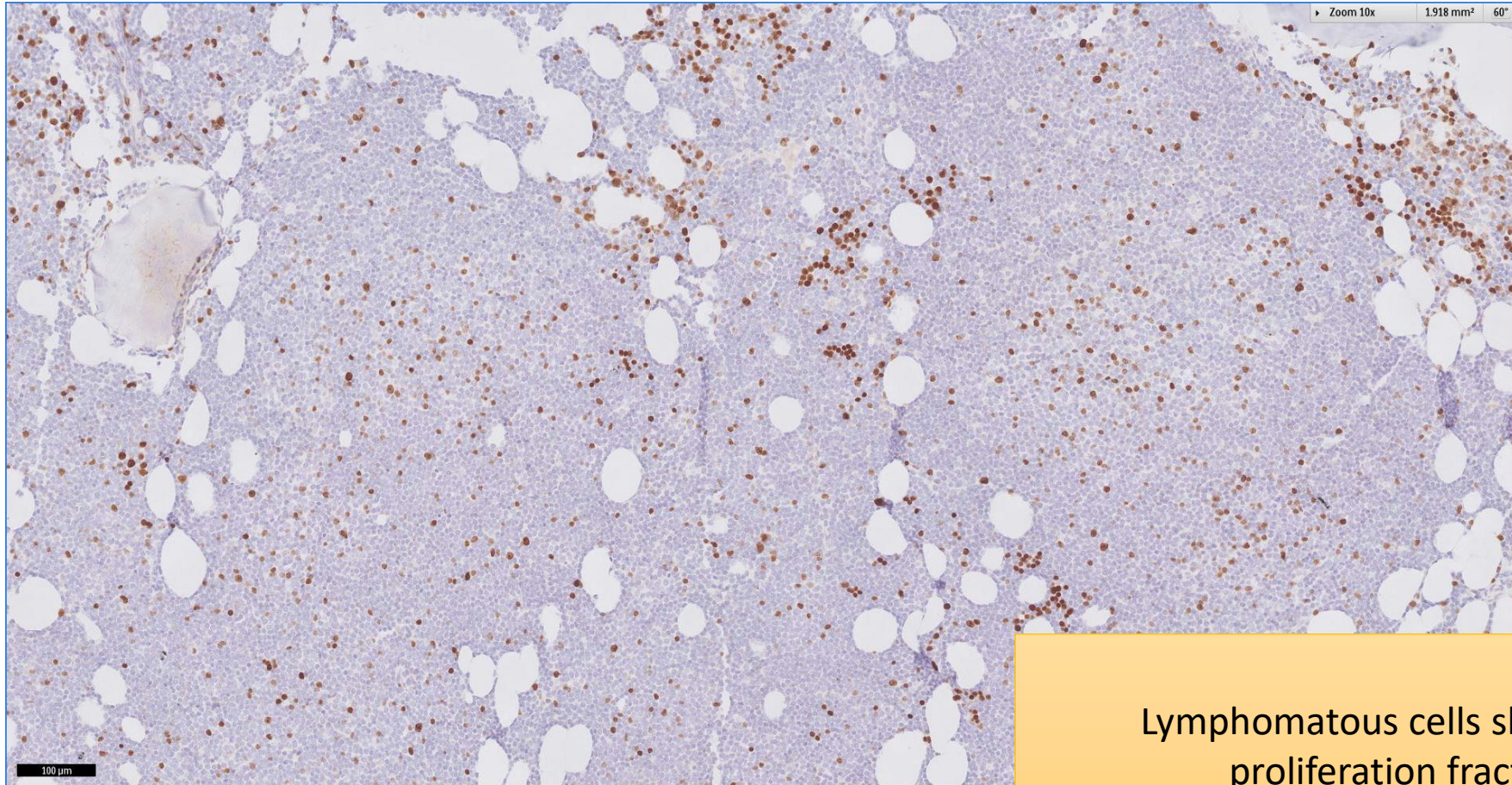
# SGH CASE 9: 17RE119

## CD5(RED) CD3(BROWN)



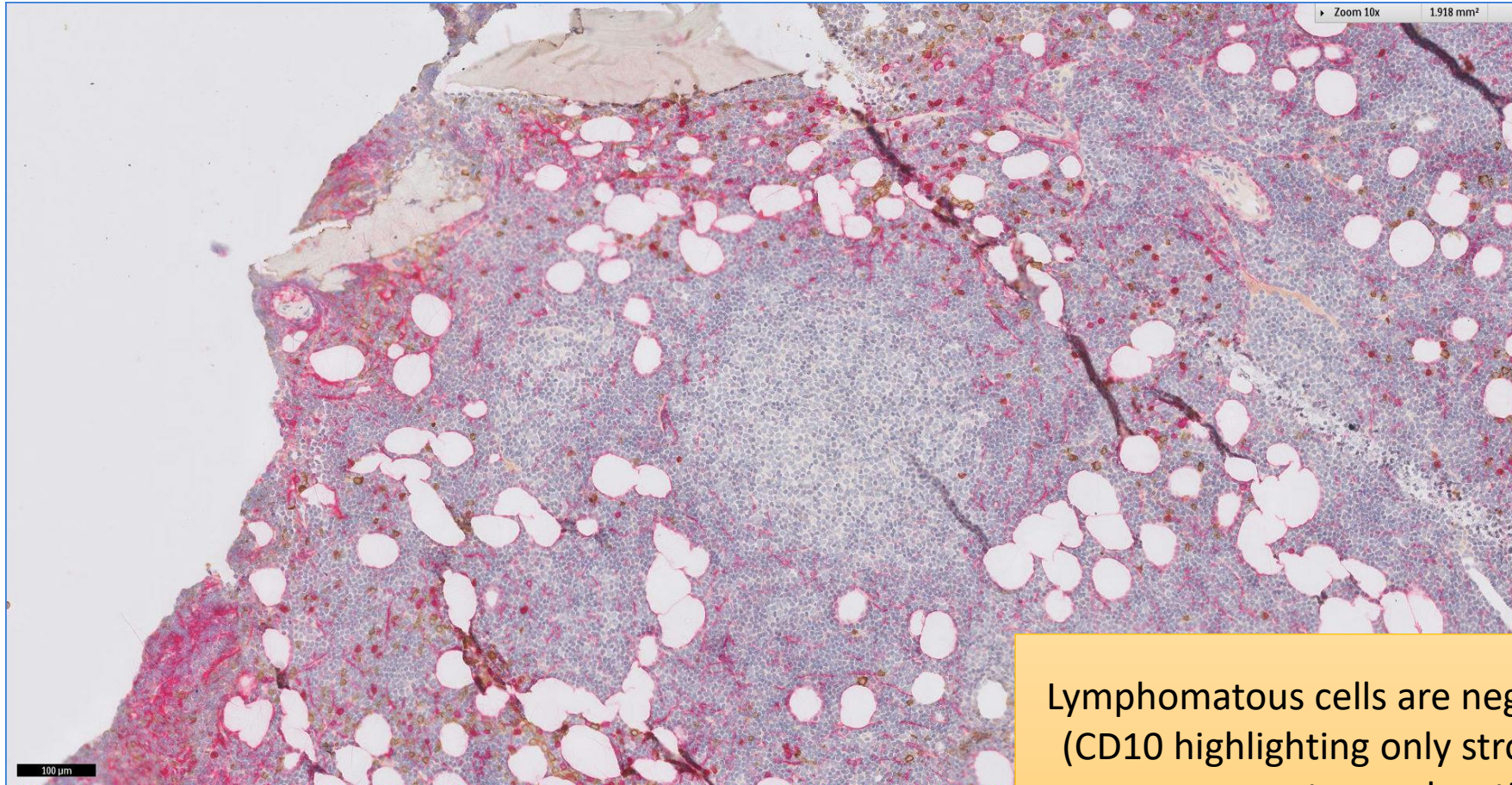
Lymphomatous B-cells positive for CD5  
(red) without CD3 (brown)

# SGH CASE 9: 17RE119 KI67



Lymphomatous cells shows low proliferation fraction

# SGH CASE 9: 17RE119 CD10(RED)



Lymphomatous cells are negative for CD10  
(CD10 highlighting only stromal cells and  
remnant granulocytic cells)

# SGH CASE 9: 17RE119

- Diagnosis
  - Chronic Lymphocytic Leukaemia