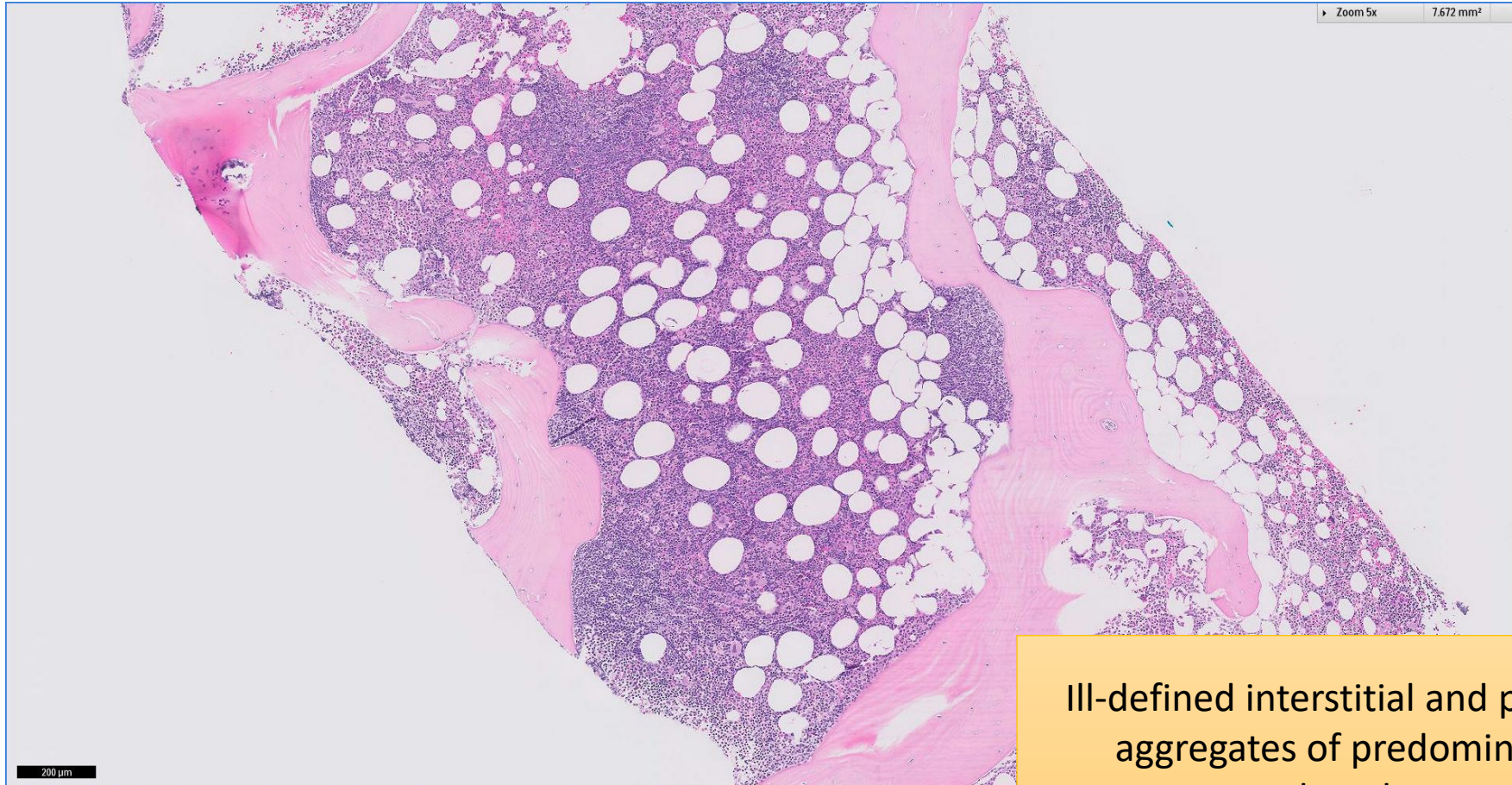


# SGH CASE 8: 17RE114

- Clinical History:
  - 60+ years old. Male. Absolute peripheral lymphocytosis  $42 \times 10^9/L$ .
- Specimen:
  - Bone marrow trephine biopsy

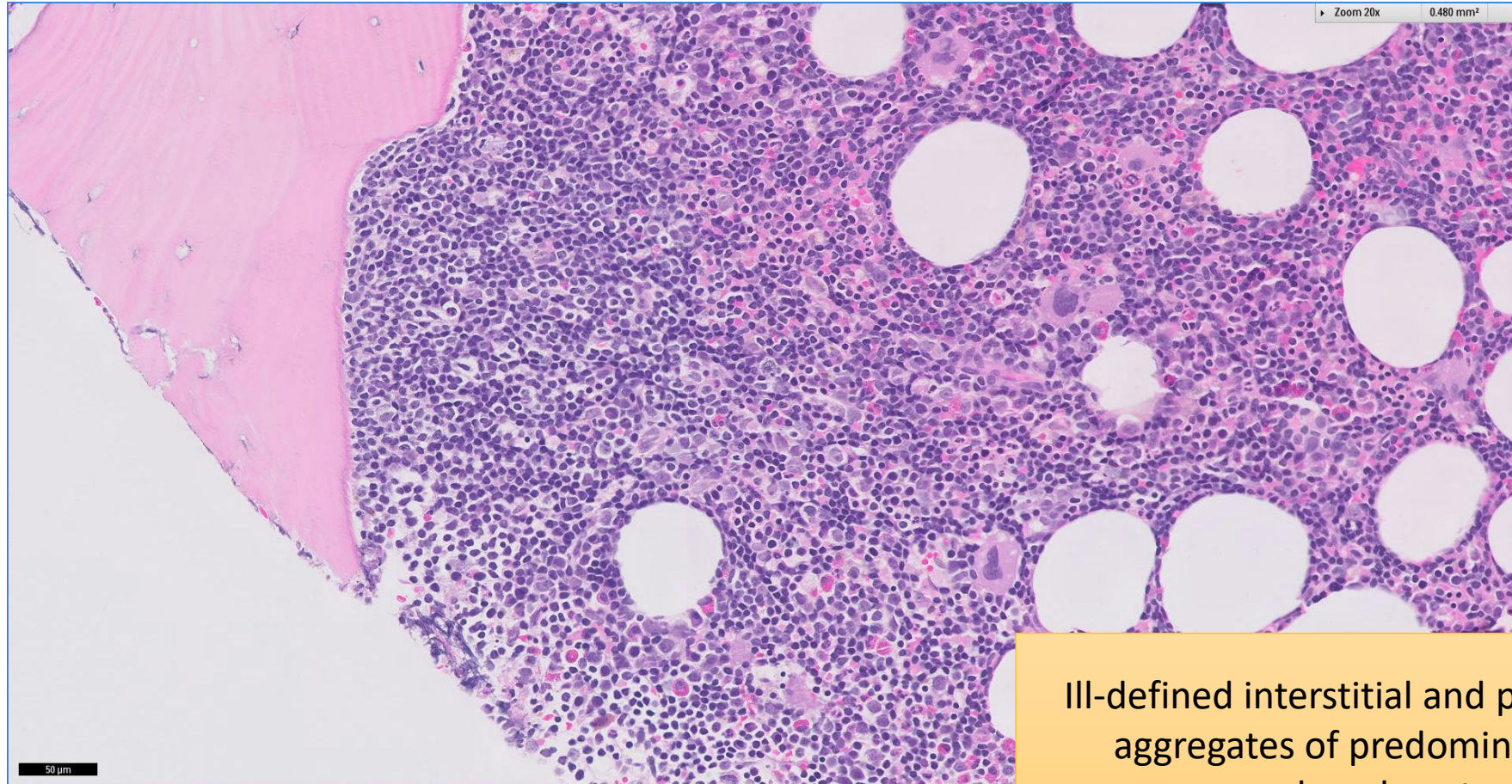
# SGH CASE 8: 17RE114 H&E



Ill-defined interstitial and paratrabecular aggregates of predominantly small lymphocytes



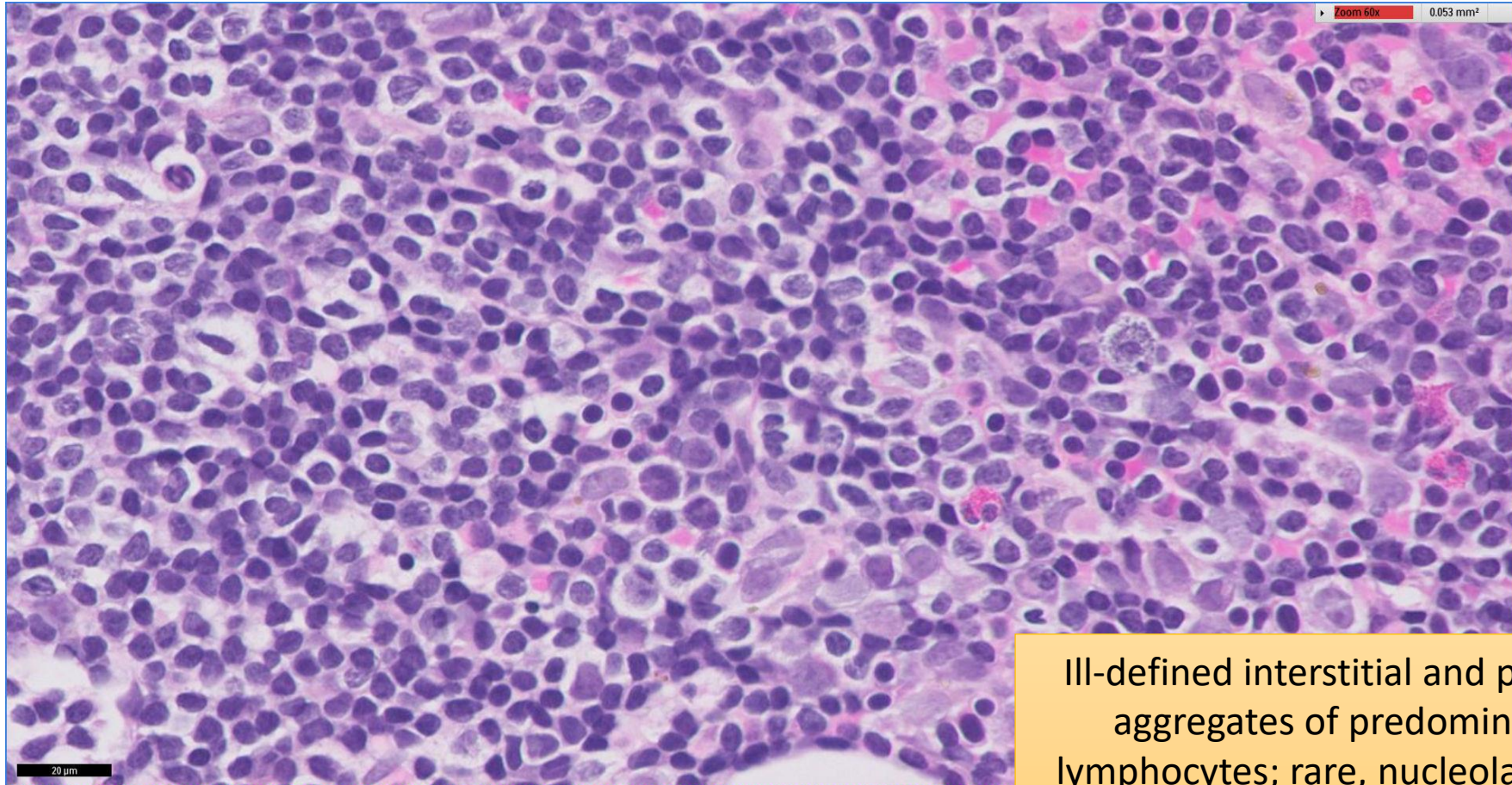
# SGH CASE 8: 17RE114 H&E



Ill-defined interstitial and paratrabecular aggregates of predominantly small lymphocytes



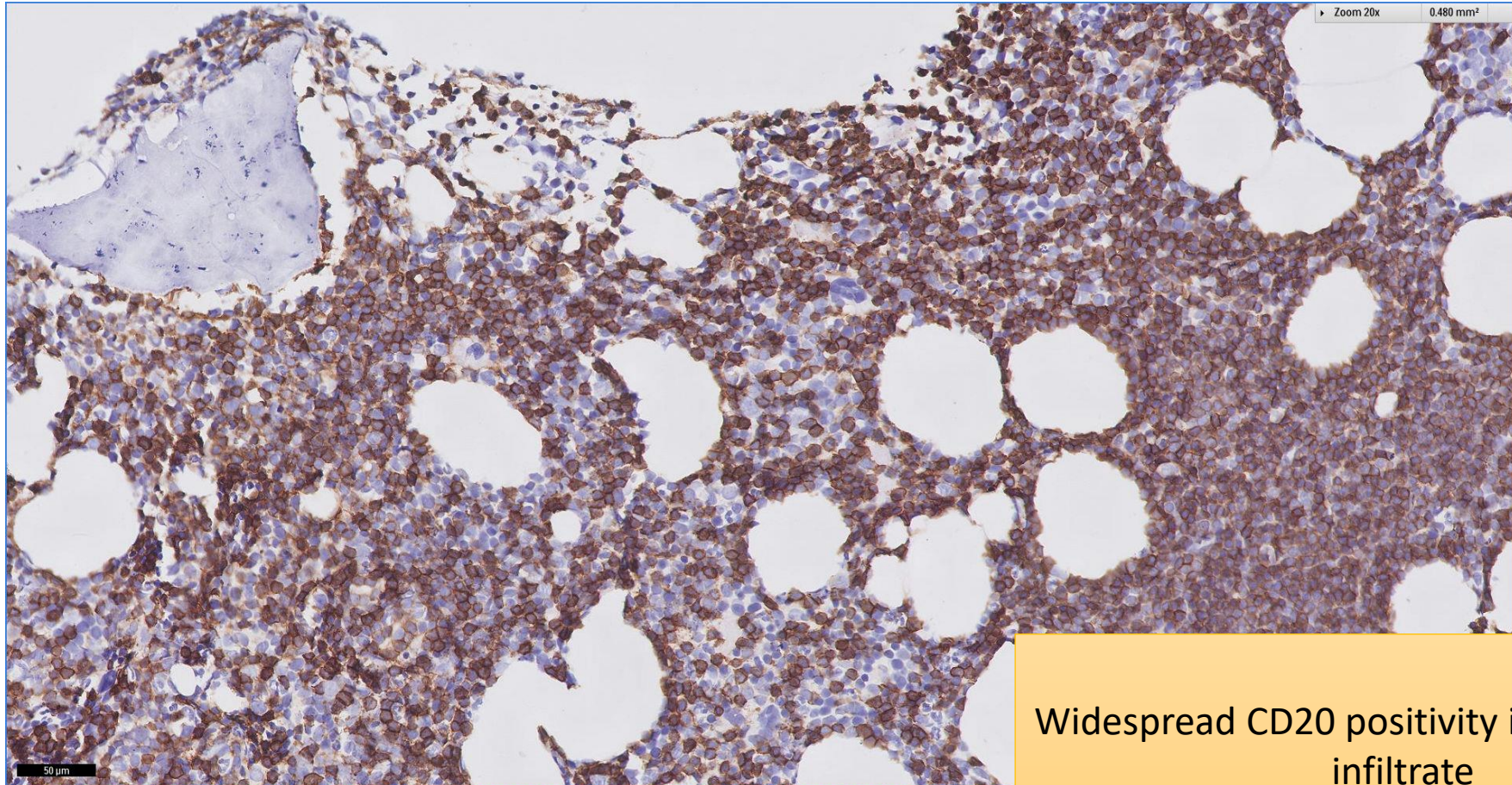
# SGH CASE 8: 17RE114 H&E



Ill-defined interstitial and paratrabecular aggregates of predominantly small lymphocytes; rare, nucleolated large cells interspersed



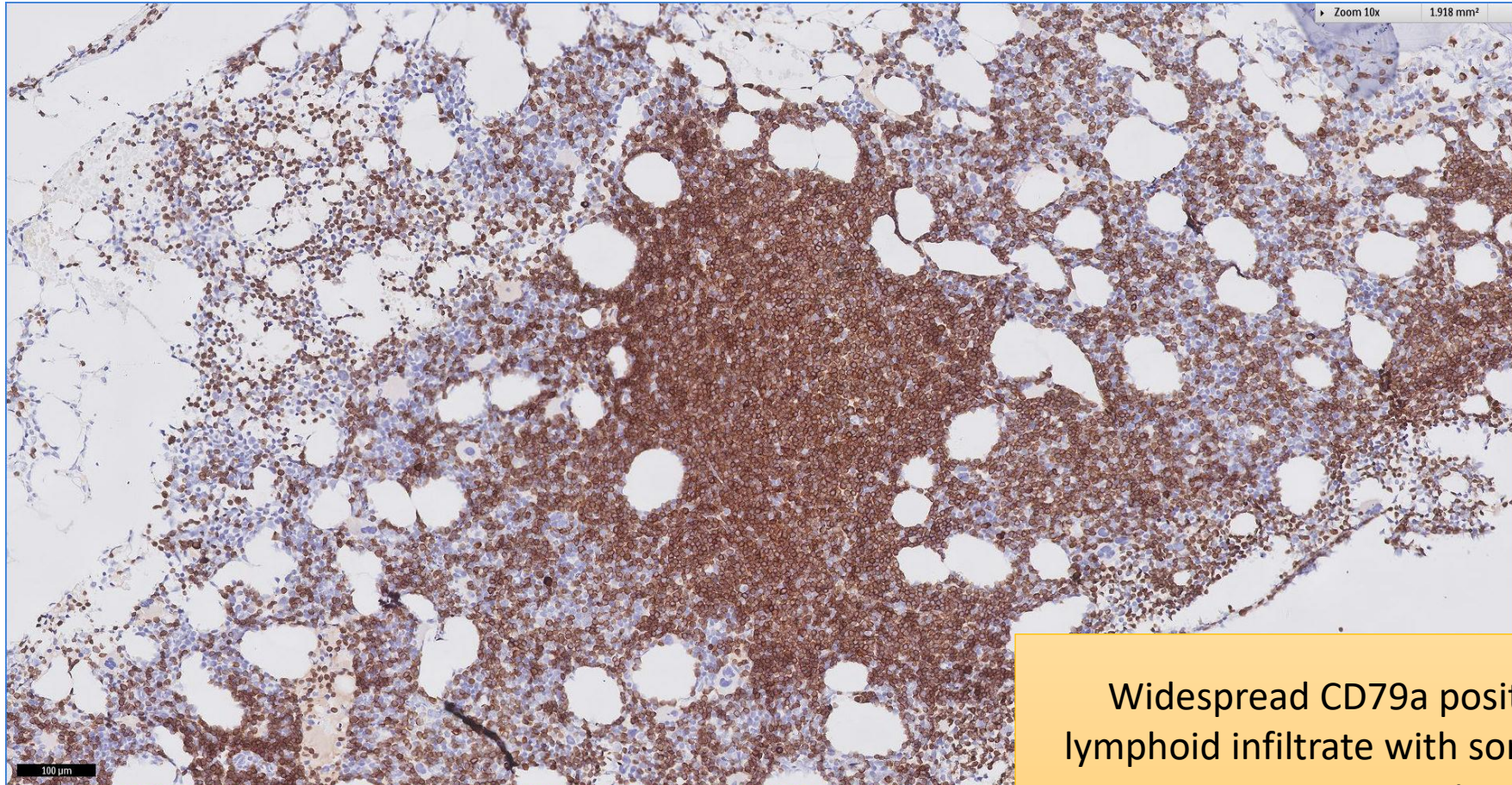
# SGH CASE 8: 17RE114 CD20



Widespread CD20 positivity in the lymphoid infiltrate



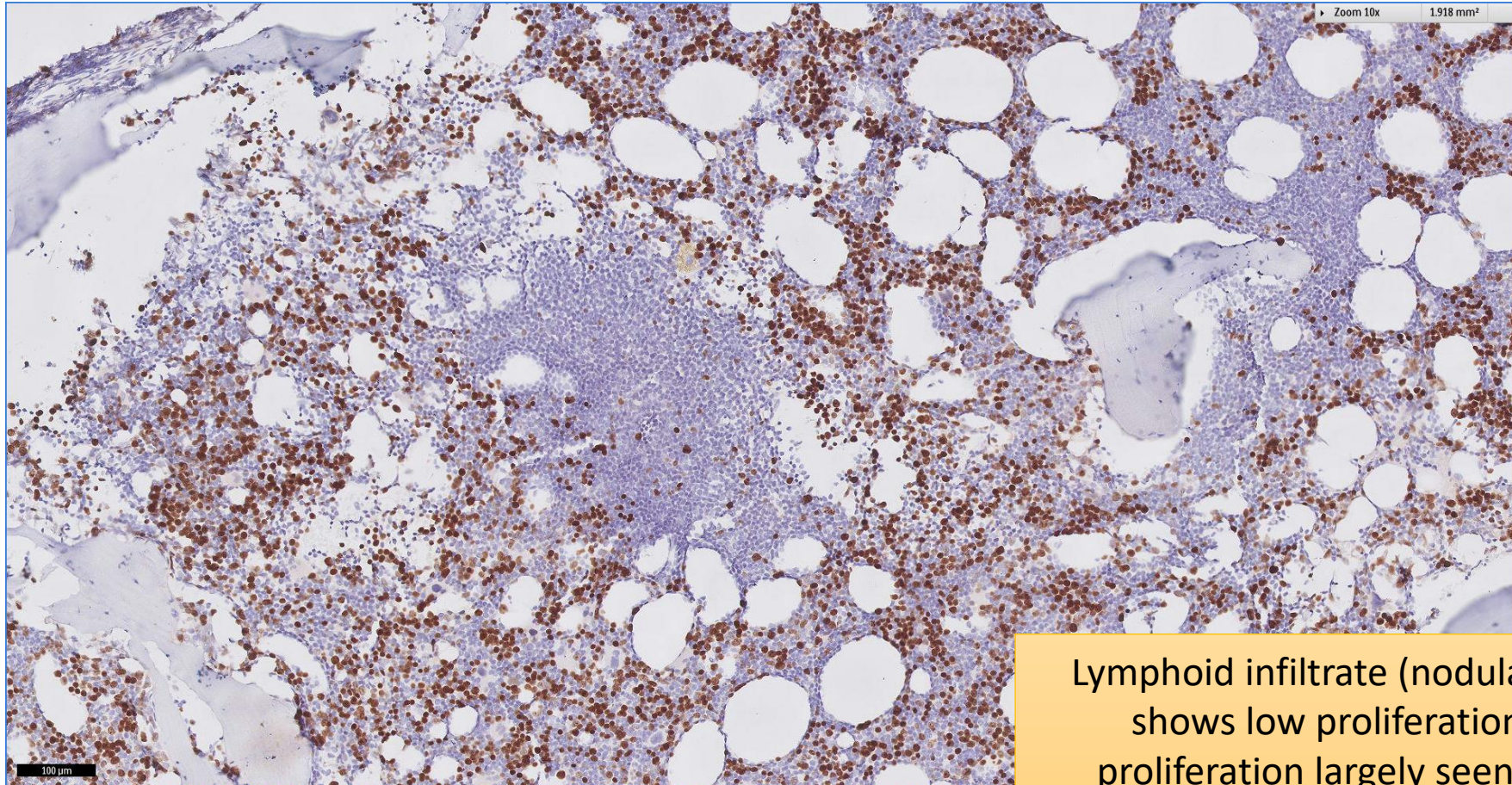
# SGH CASE 8: 17RE114 CD79A



Widespread CD79a positivity in the lymphoid infiltrate with some nodularity present



# SGH CASE 8: 17RE114 KI67

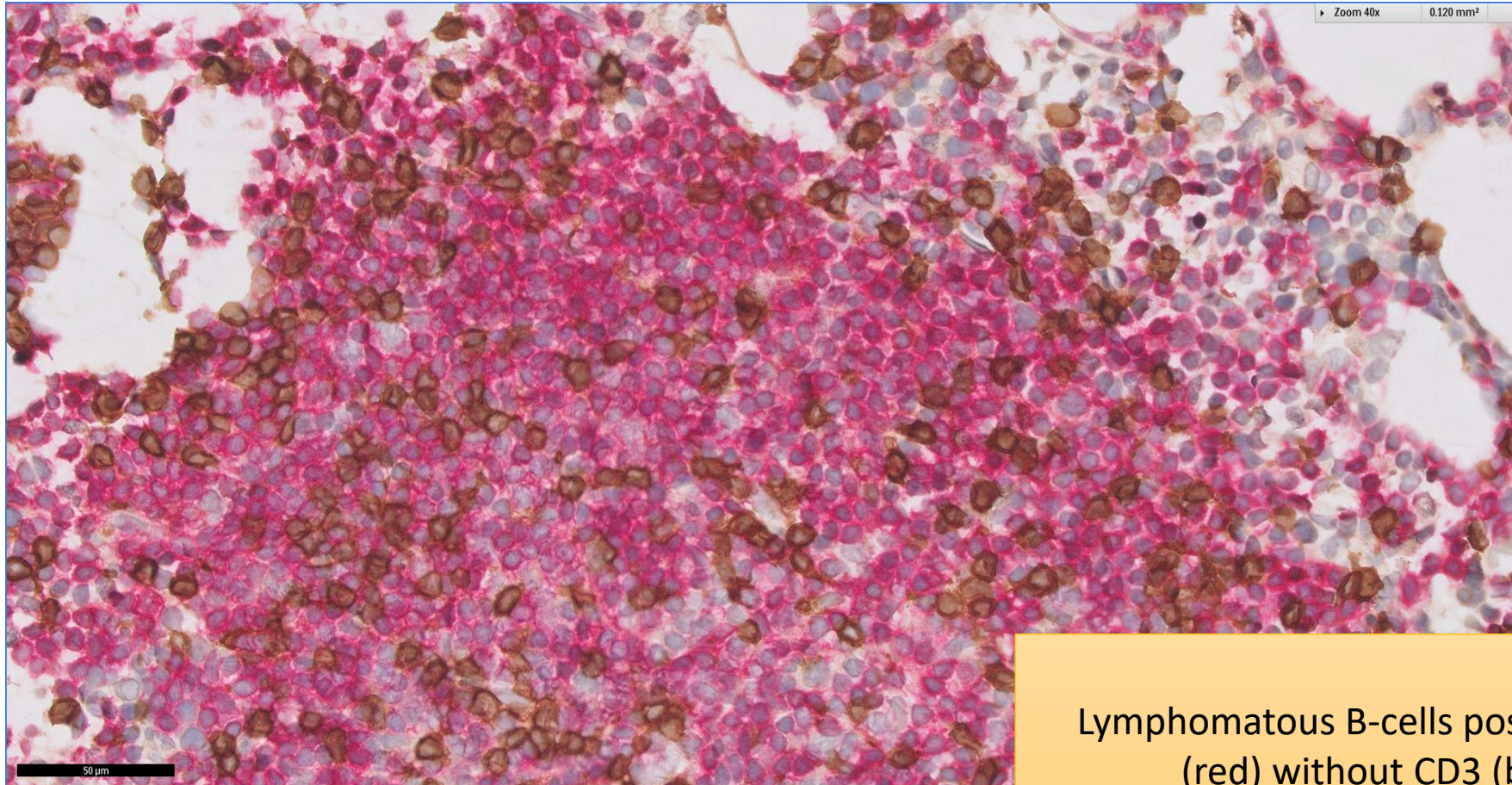


Lymphoid infiltrate (nodular pale areas) shows low proliferation fraction; proliferation largely seen in remnant haematopoietic elements



# SGH CASE 8: 17RE114

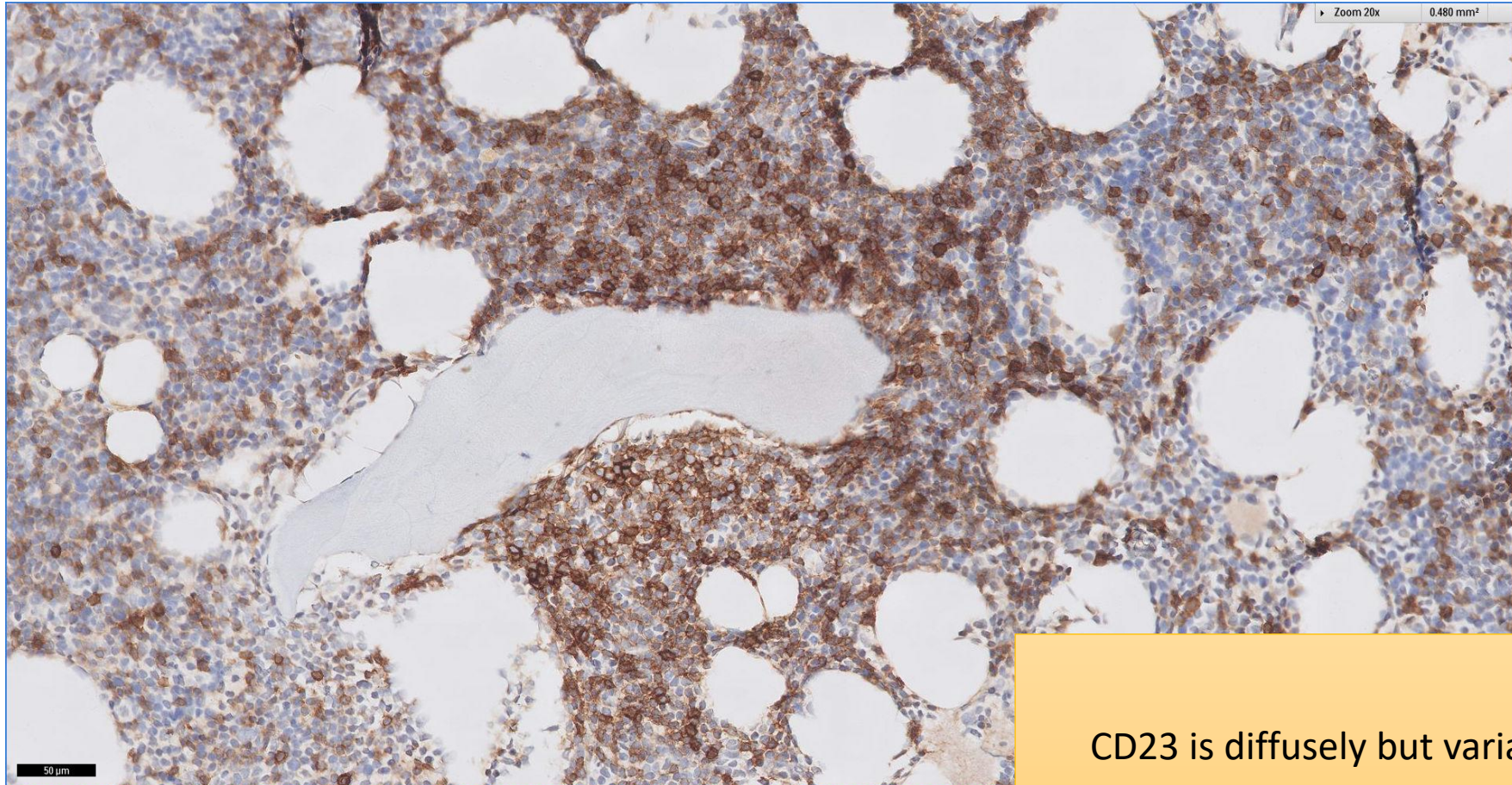
## CD5(RED) CD3(BROWN)



Lymphomatous B-cells positive for CD5  
(red) without CD3 (brown)



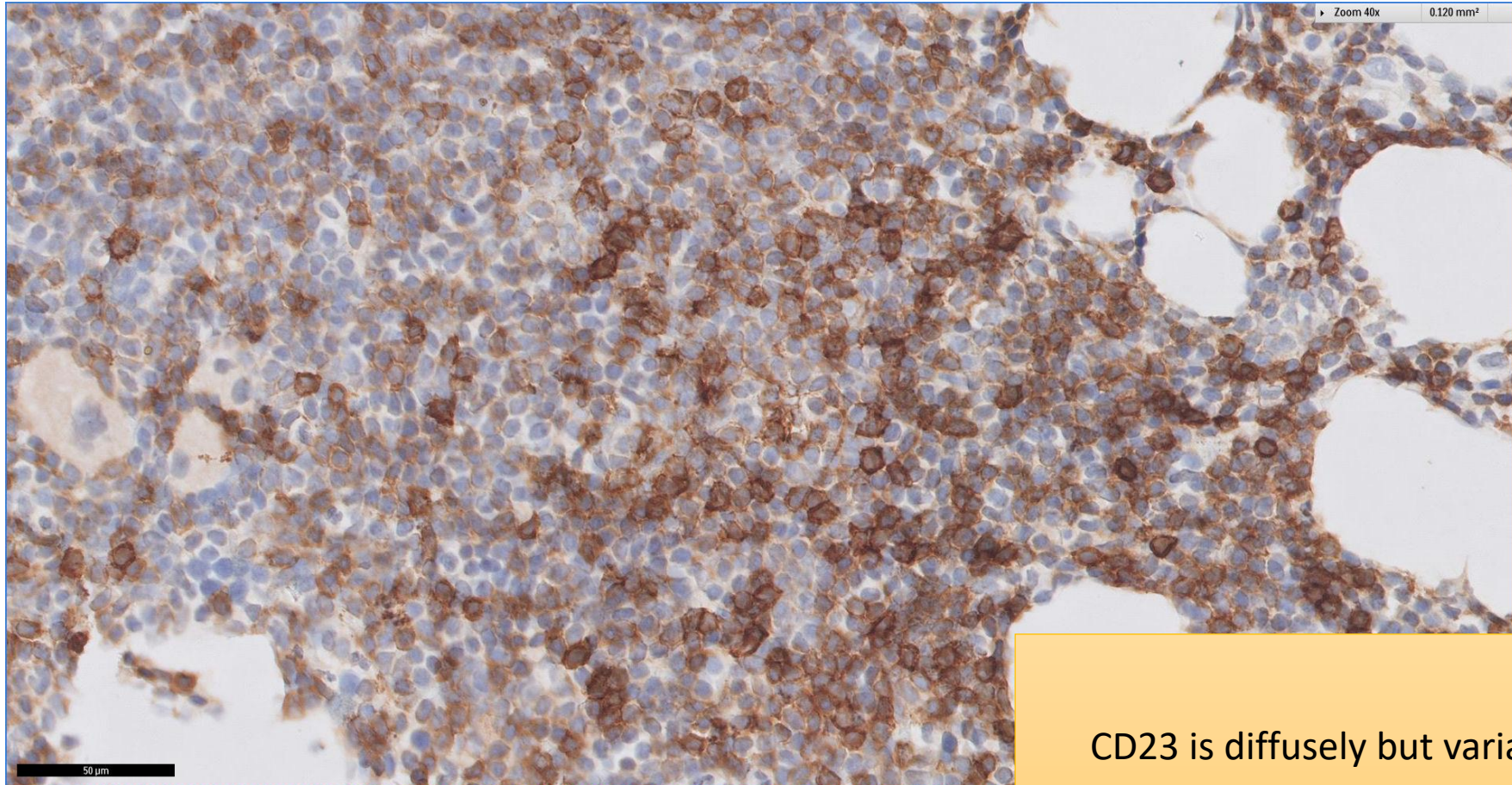
# SGH CASE 8: 17RE114 CD23



CD23 is diffusely but variably positive



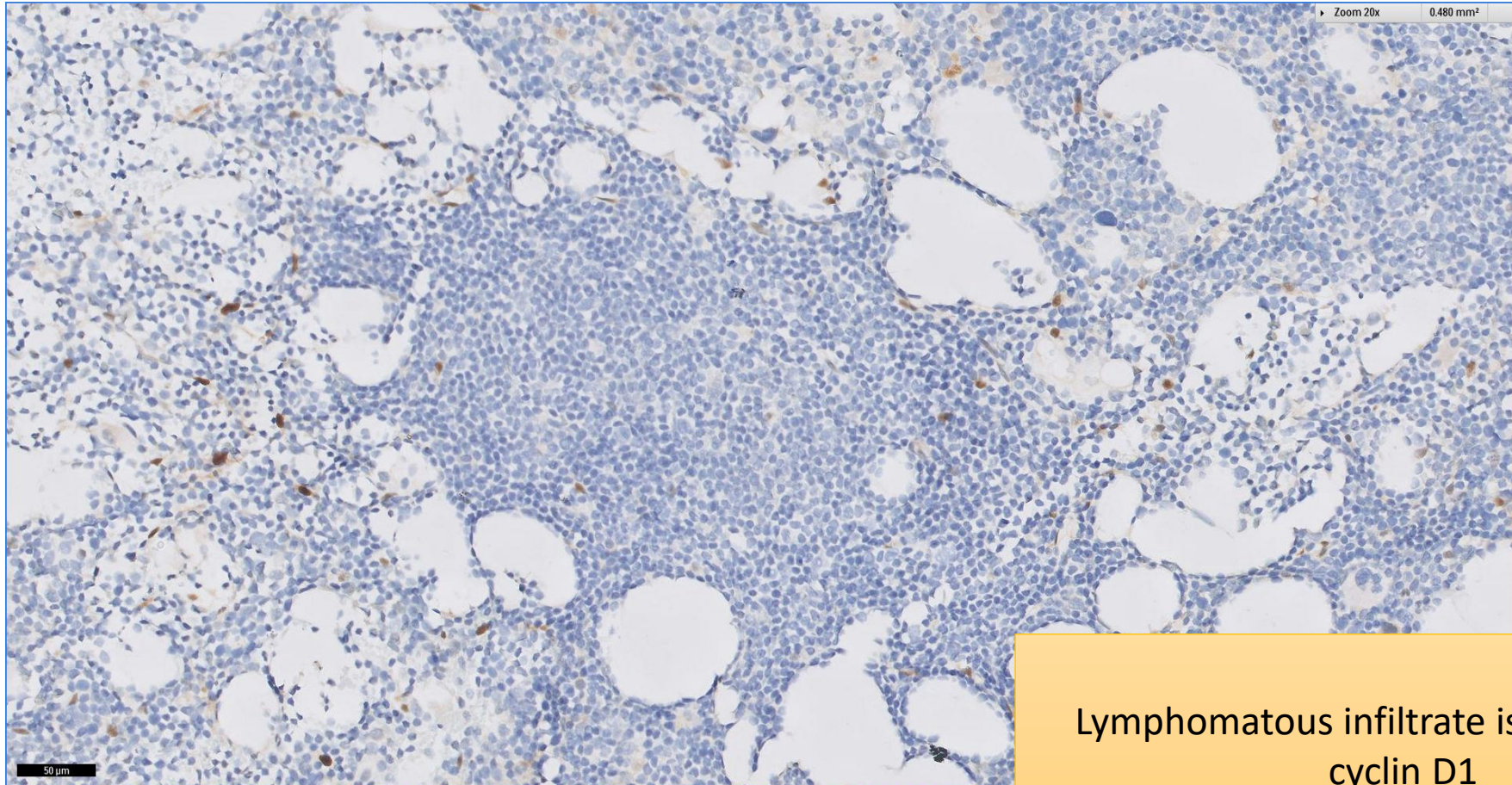
# SGH CASE 8: 17RE114 CD23



CD23 is diffusely but variably positive



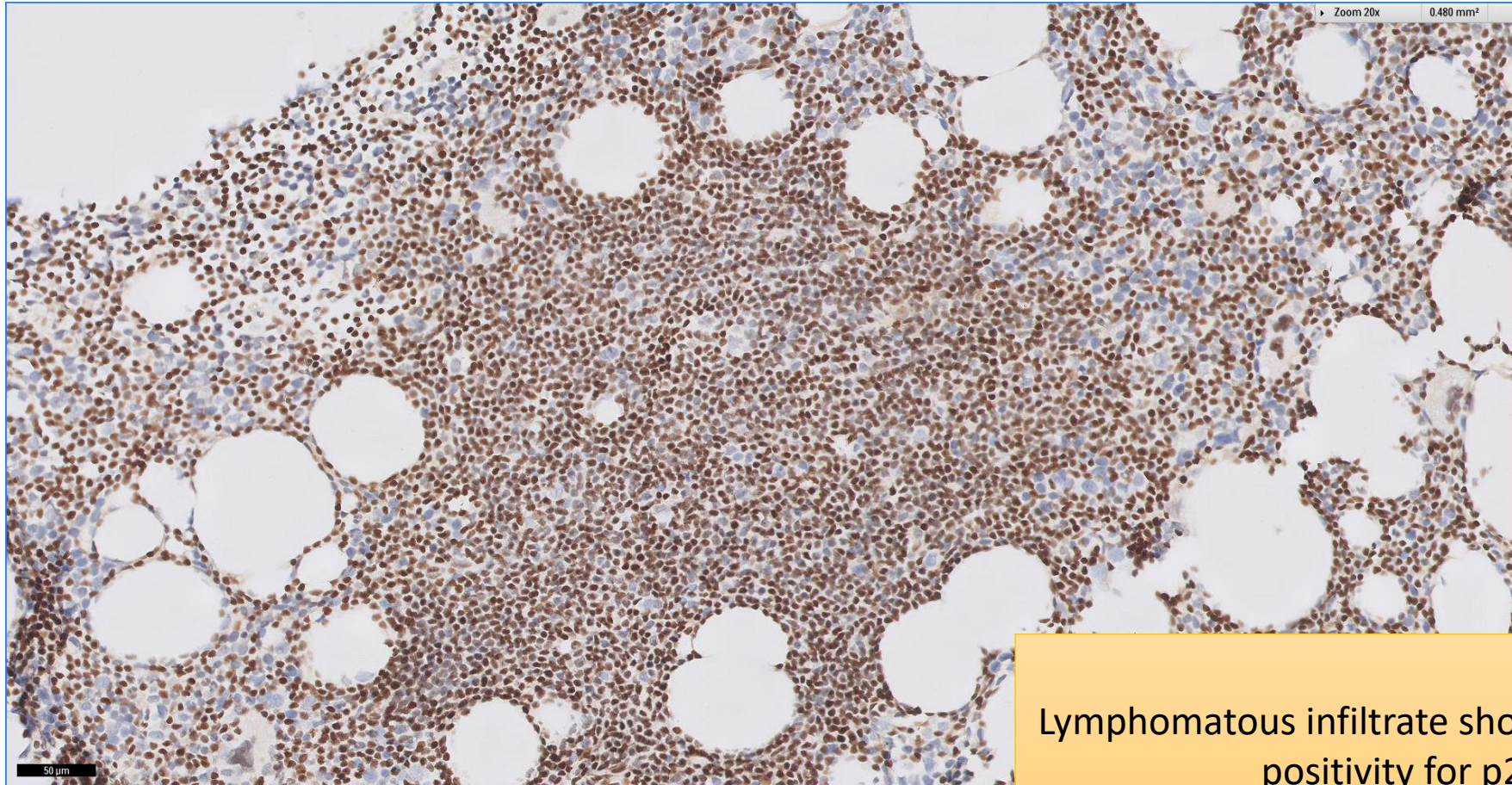
# SGH CASE 8: 17RE114 CYCLIN D1



Lymphomatous infiltrate is negative for cyclin D1



# SGH CASE 8: 17RE114 P27



Lymphomatous infiltrate shows widespread positivity for p27



# SGH CASE 8: 17RE114

- Chronic Lymphocytic Leukaemia