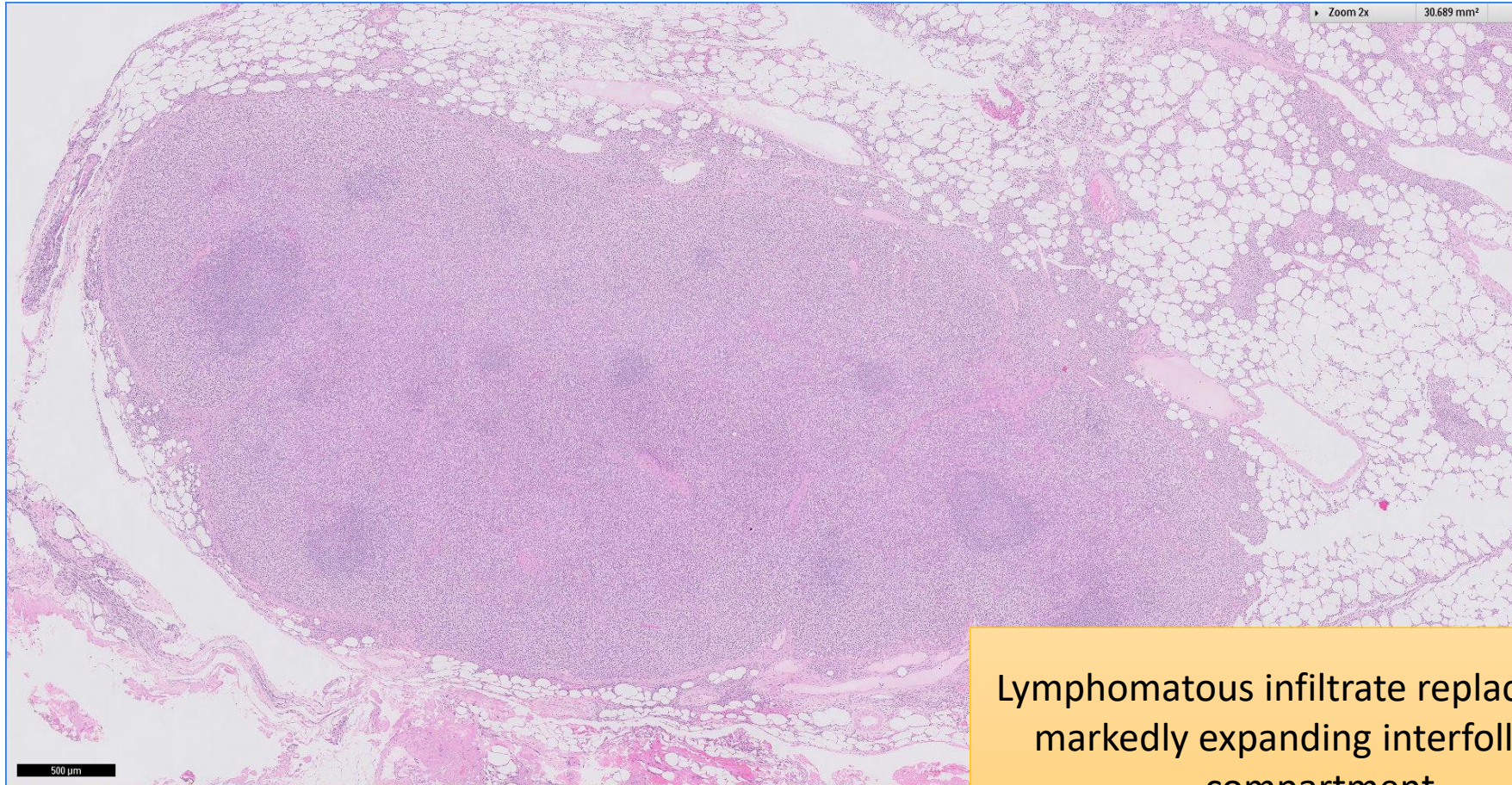


SGH CASE 5: 17RE105

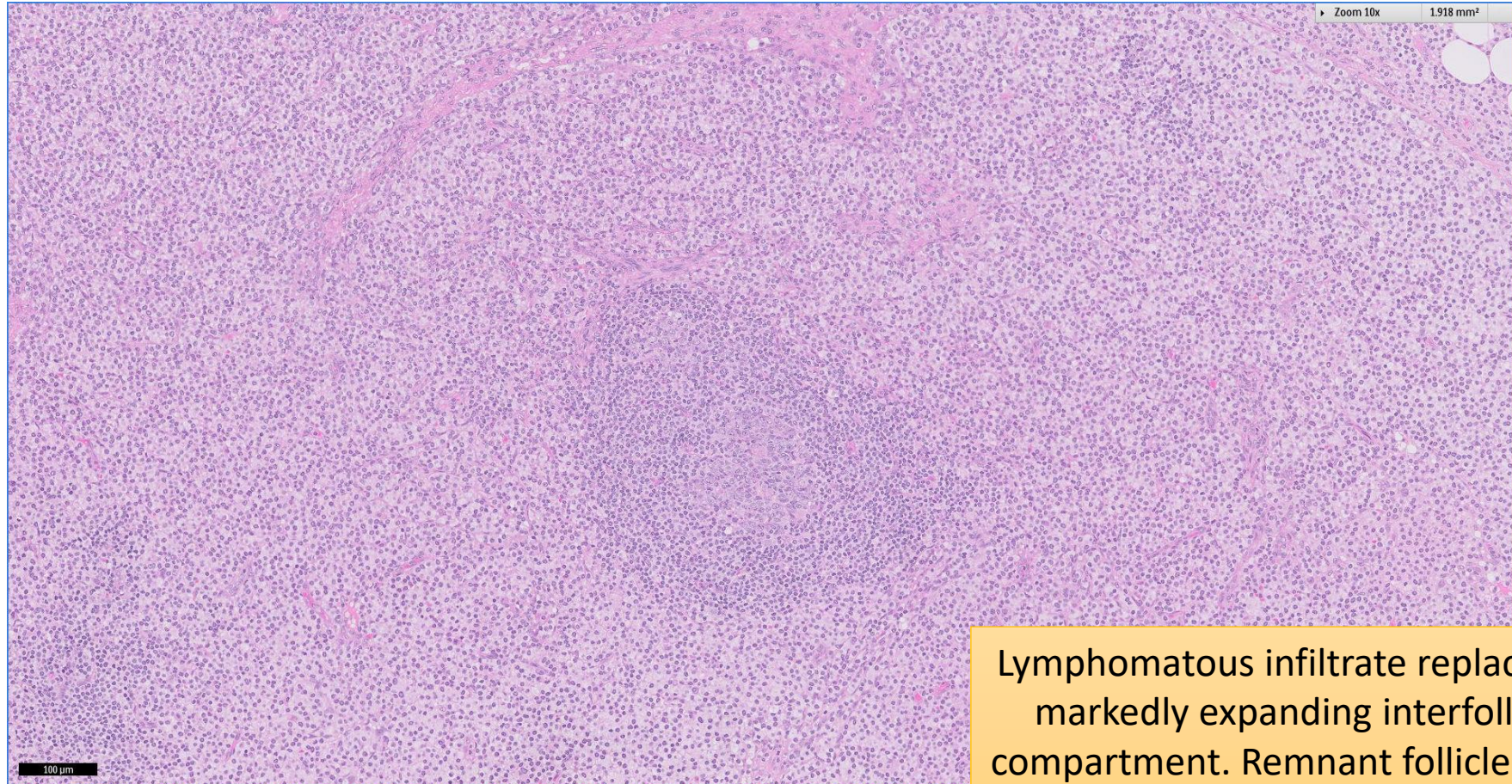
- Clinical History:
 - 30+ years old (late 30s). Male.
- Specimen:
 - Left supraclavicular lymph node excision biopsy and bilateral bone marrow trephine biopsies.

SGH CASE 5: 17RE105 LYMPH NODE H&E



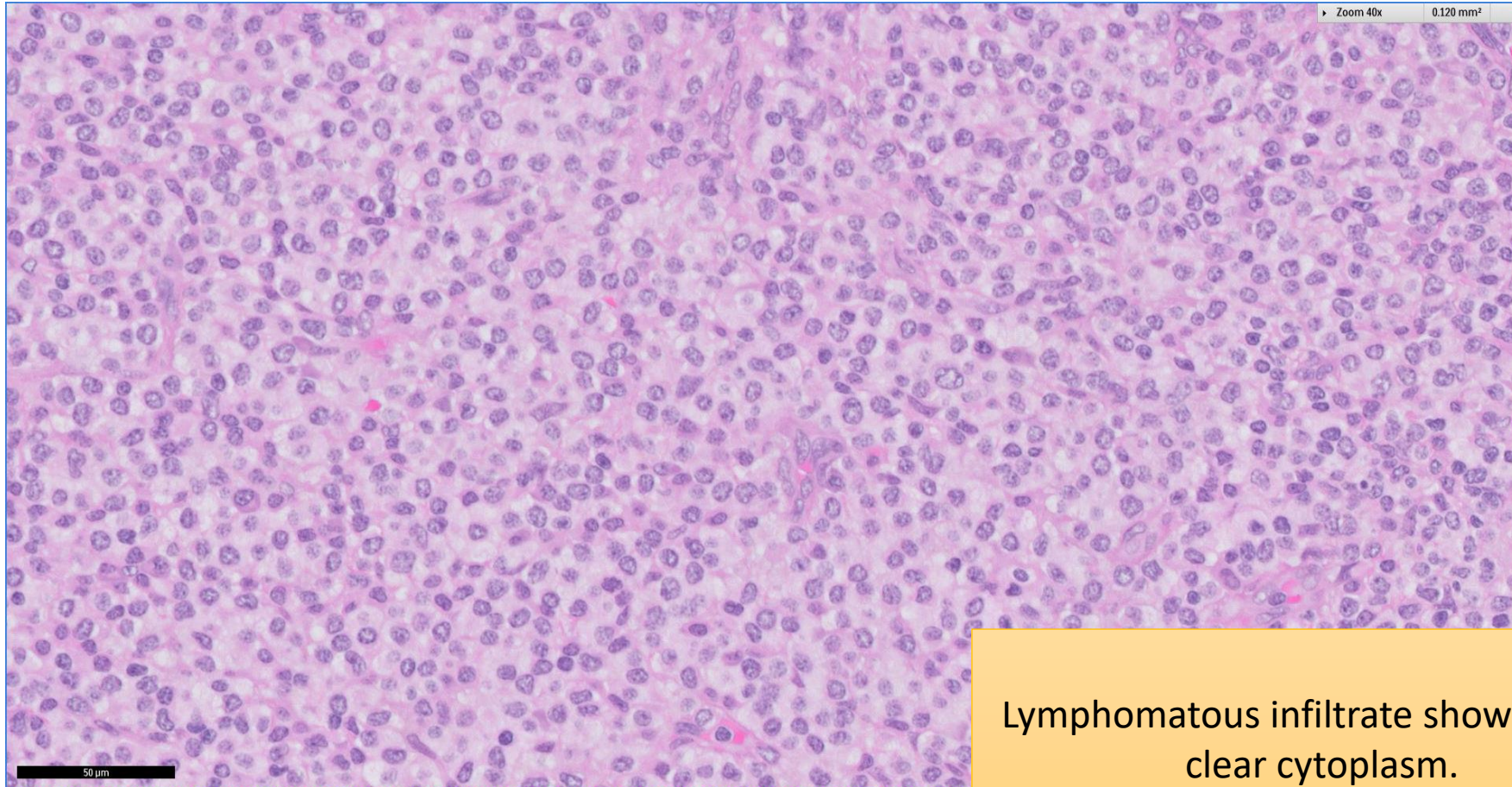
Lymphomatous infiltrate replacing and markedly expanding interfollicular compartment

SGH CASE 5: 17RE105 LYMPH NODE H&E



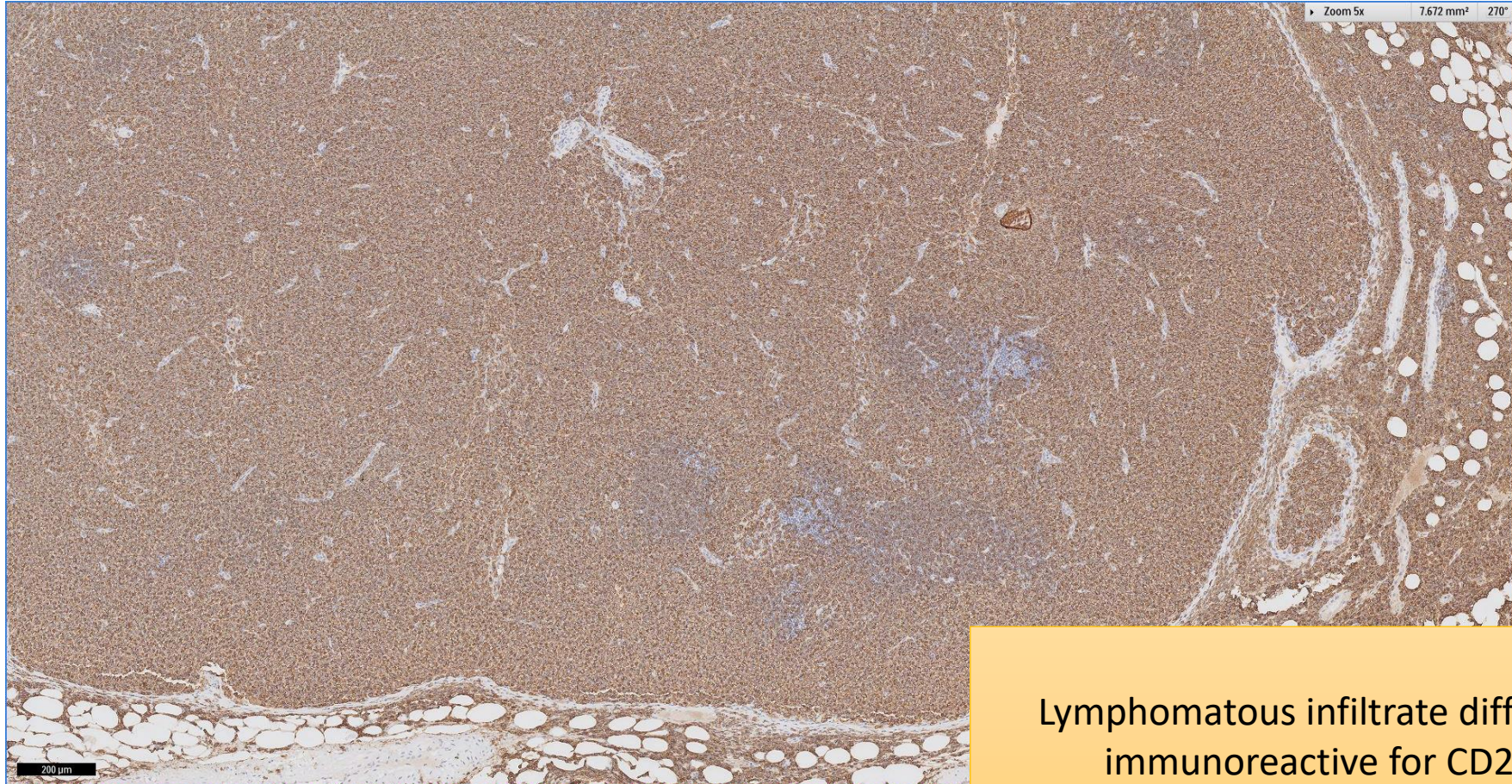
Lymphomatous infiltrate replacing and markedly expanding interfollicular compartment. Remnant follicle present in the centre.

SGH CASE 5: 17RE105 LYMPH NODE H&E



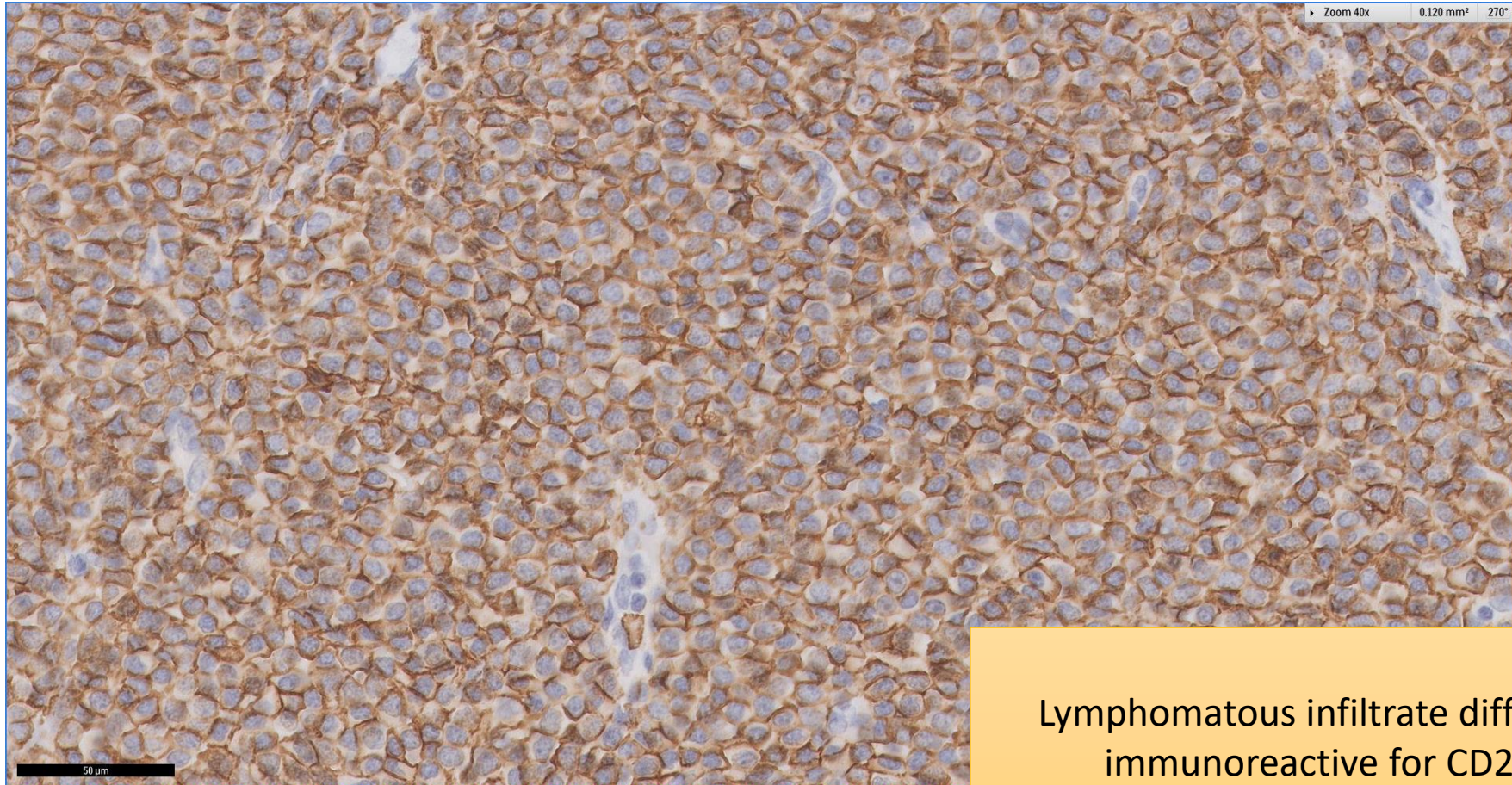
Lymphomatous infiltrate shows ample clear cytoplasm.

SGH CASE 5: 17RE105 LYMPH NODE CD20



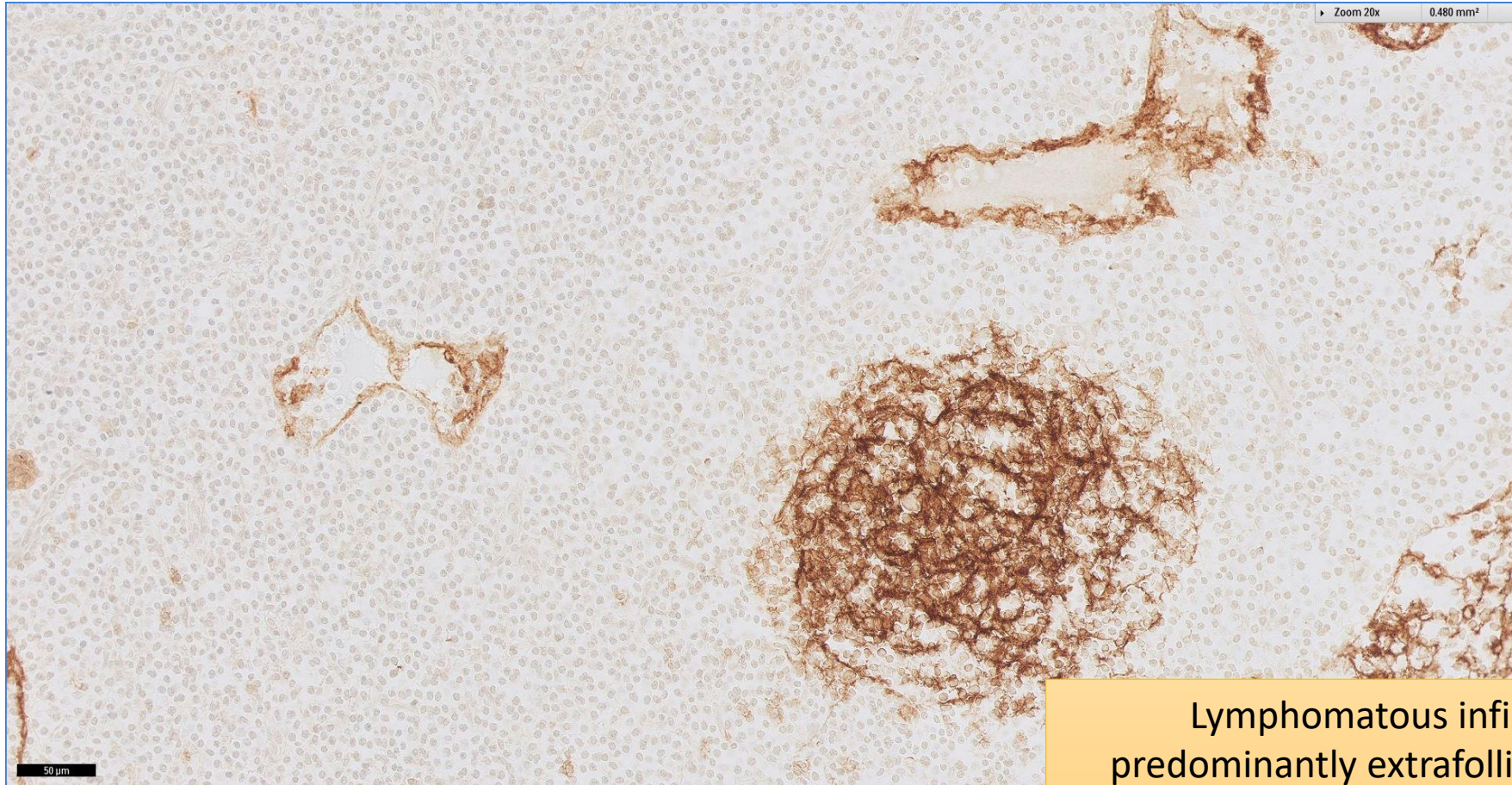
Lymphomatous infiltrate diffusely
immunoreactive for CD20

SGH CASE 5: 17RE105 LYMPH NODE CD20



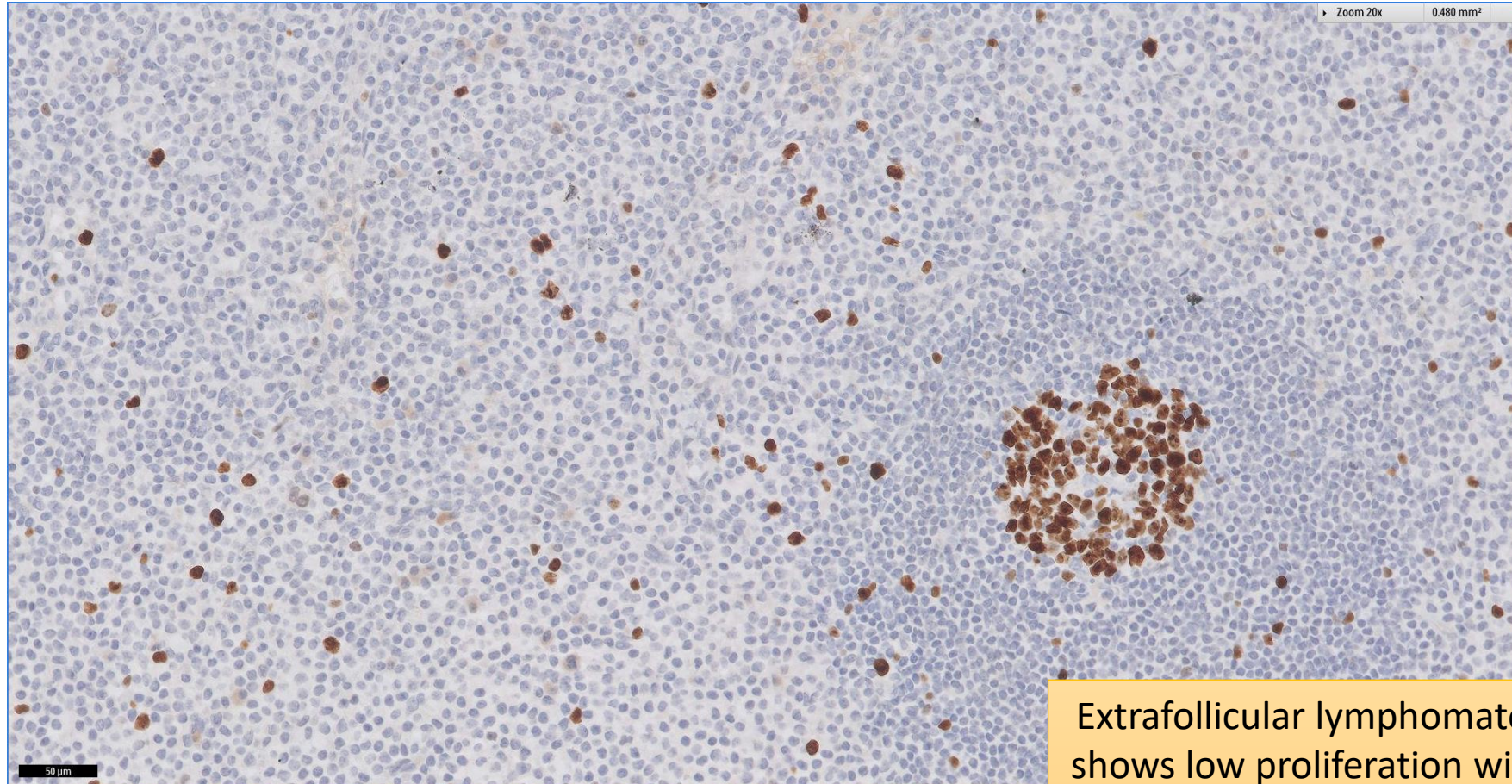
Lymphomatous infiltrate diffusely immunoreactive for CD20

SGH CASE 5: 17RE105 LYMPH NODE CD21



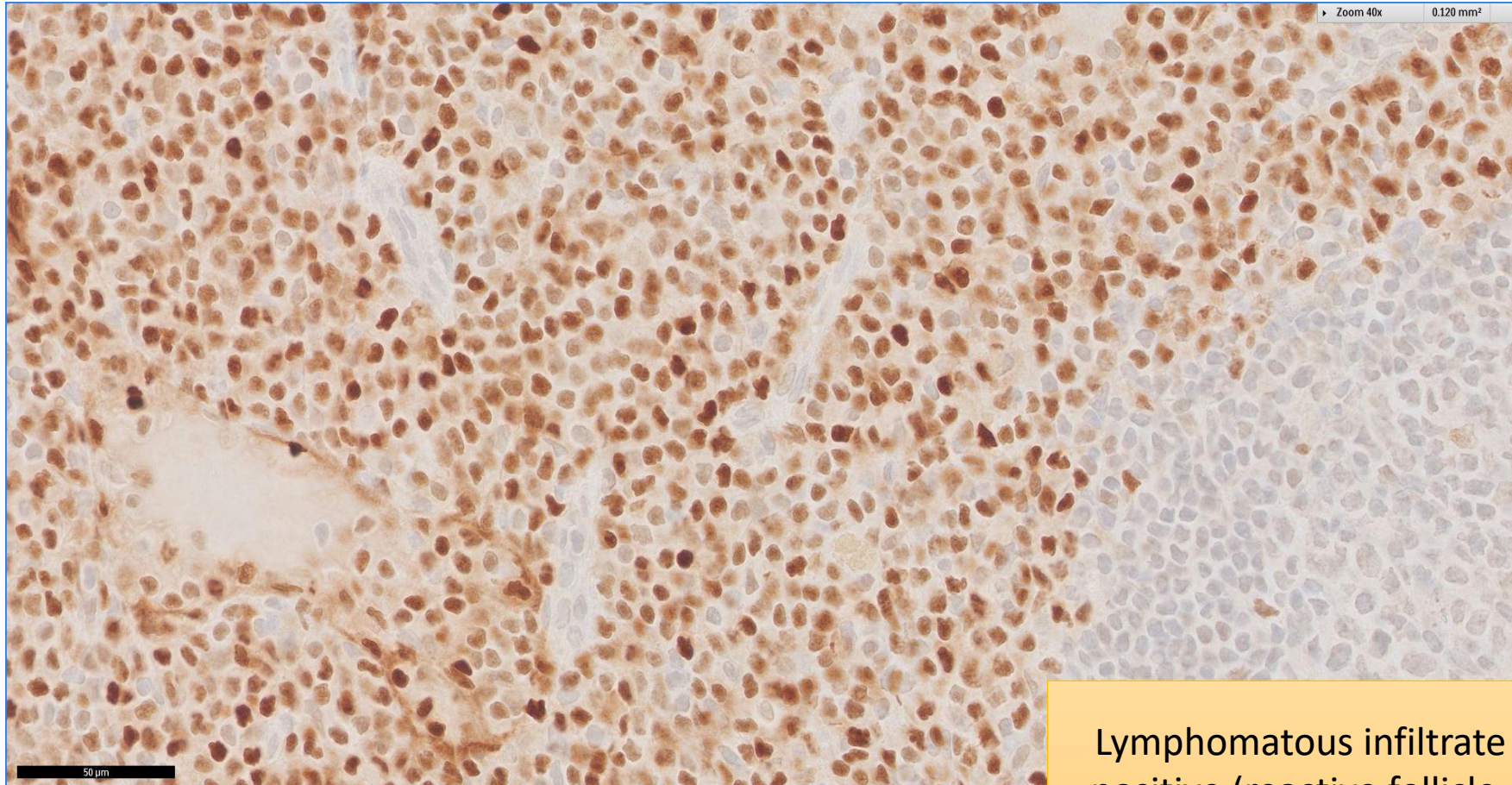
Lymphomatous infiltrate
predominantly extrafollicular with
remnant follicle with meshworks
present.

SGH CASE 5: 17RE105 LYMPH NODE KI67



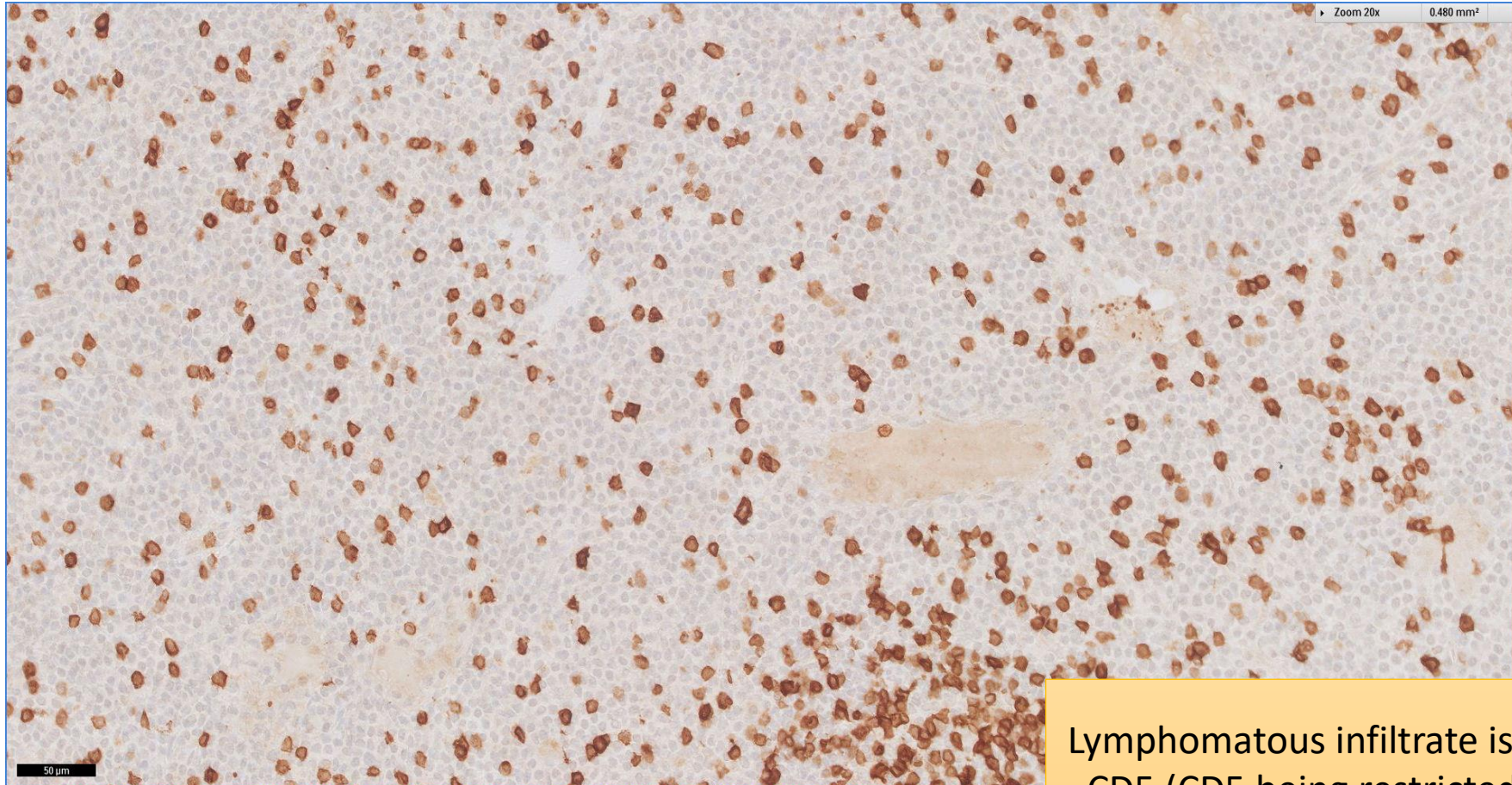
Extrafollicular lymphomatous infiltrate shows low proliferation with Ki-67 high reactive germinal centre present in remnant follicle

SGH CASE 5: 17RE105 LYMPH NODE CYCLIN D1



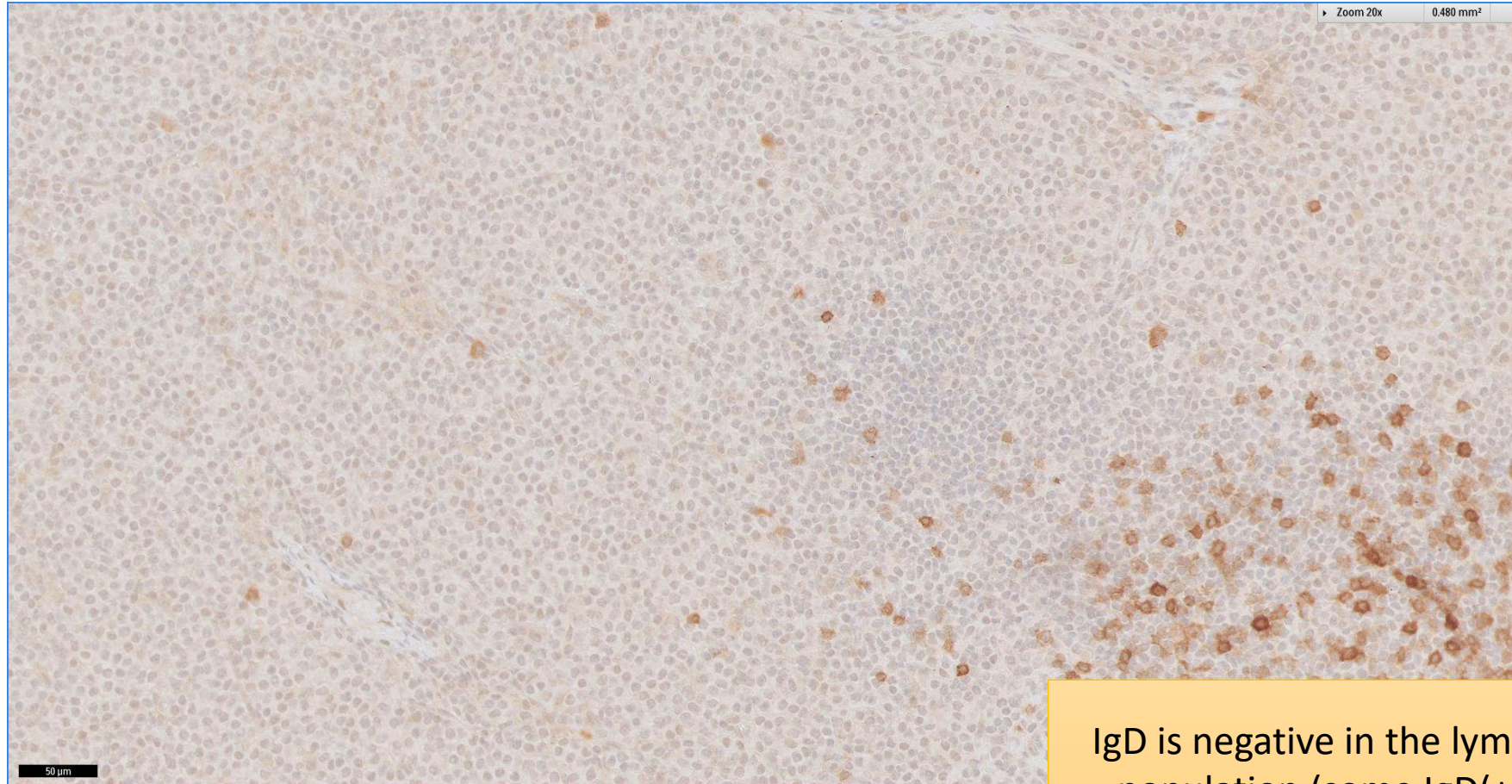
Lymphomatous infiltrate is cyclin D1 positive (reactive follicle on the right hand side is negative for cyclin D1)

SGH CASE 5: 17RE105 LYMPH NODE CD5



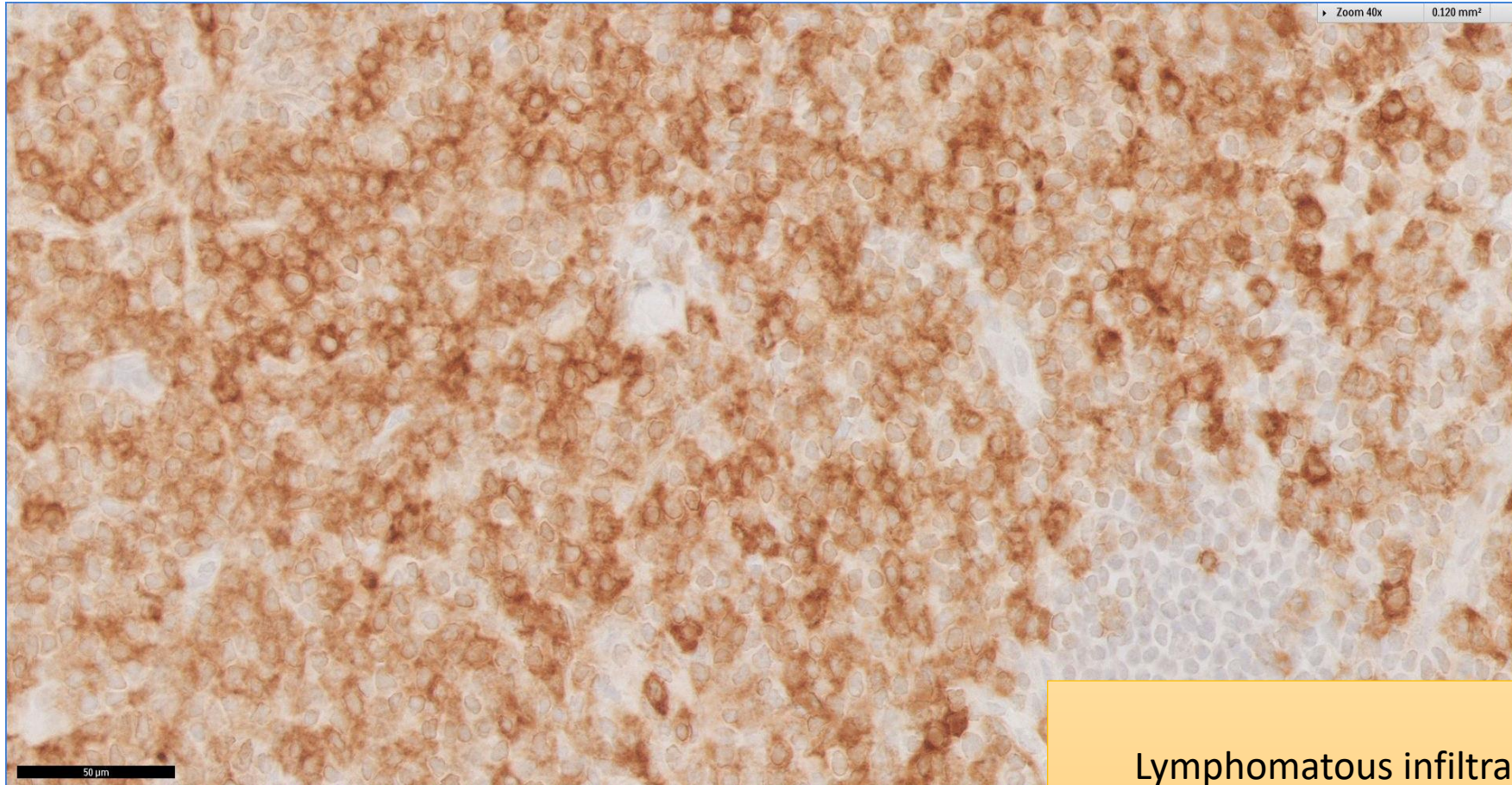
Lymphomatous infiltrate is negative for CD5 (CD5 being restricted to small T-cells)

SGH CASE 5: 17RE105 LYMPH NODE IGD



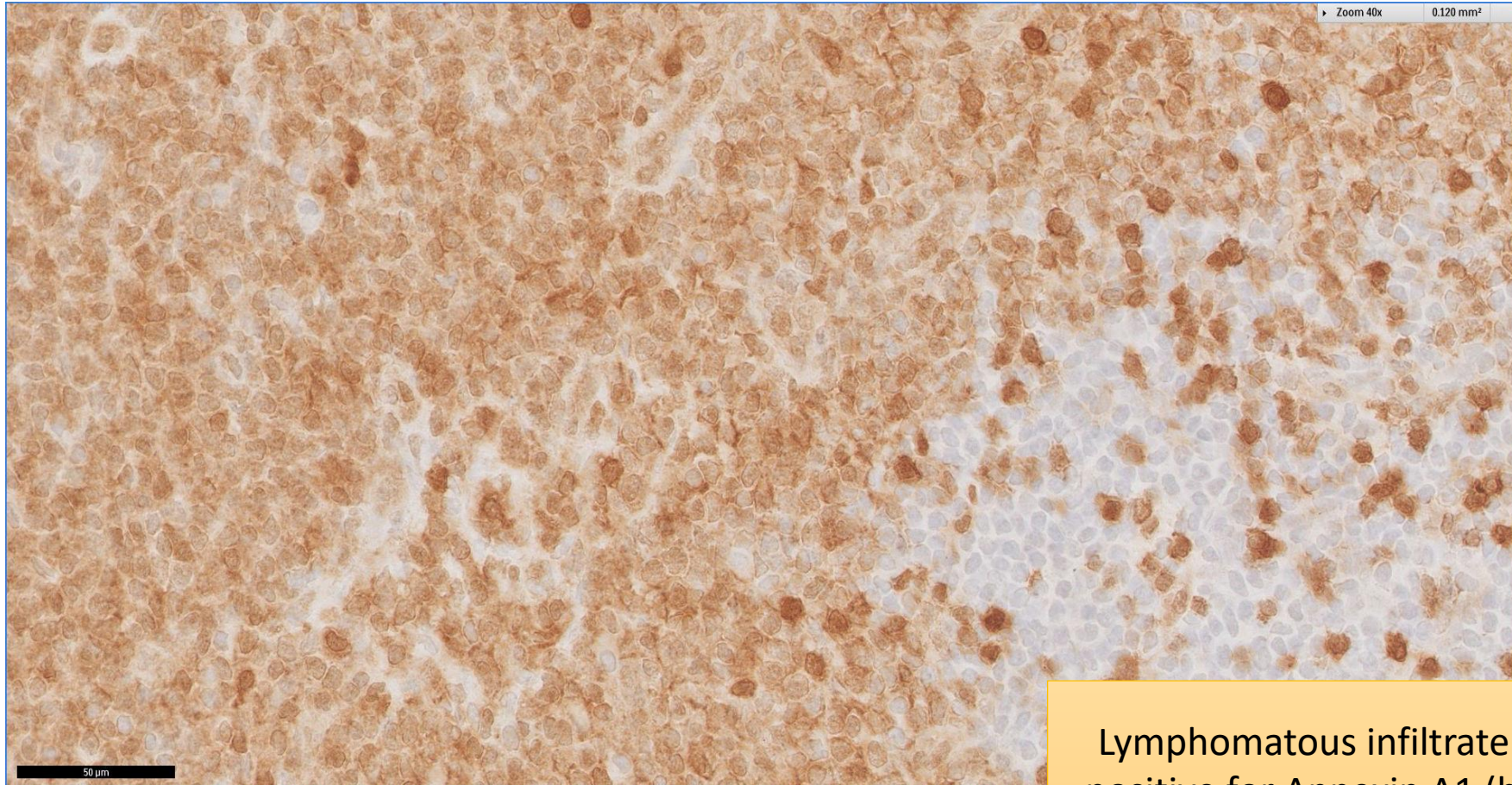
IgD is negative in the lymphomatous population (some IgD(+) remnant mantle zone cells in bottom right)

SGH CASE 5: 17RE105 LYMPH NODE CD10



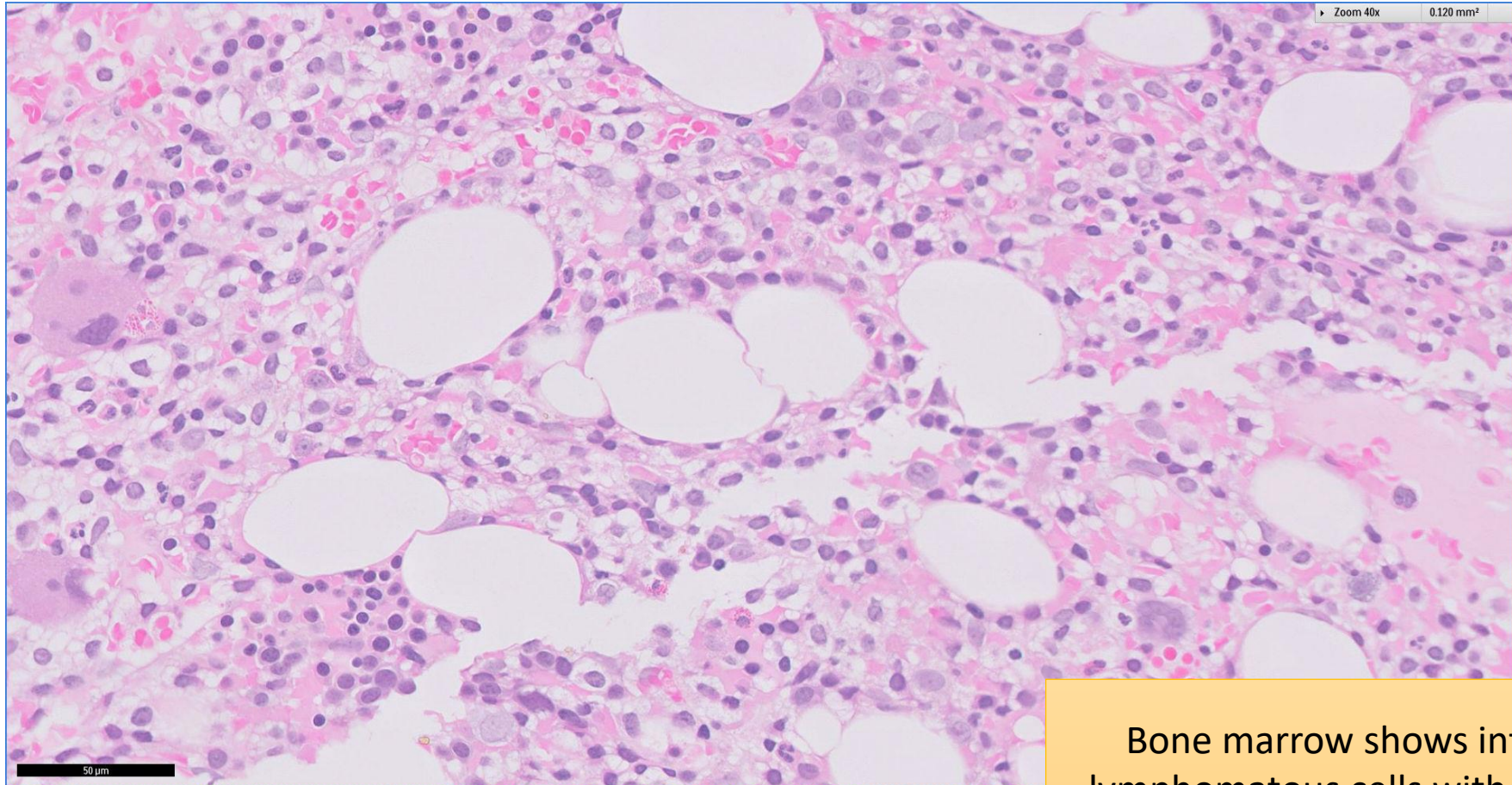
Lymphomatous infiltrate shows
widespread aberrant CD10 positivity

SGH CASE 5: 17RE105 LYMPH NODE ANNEXIN A1



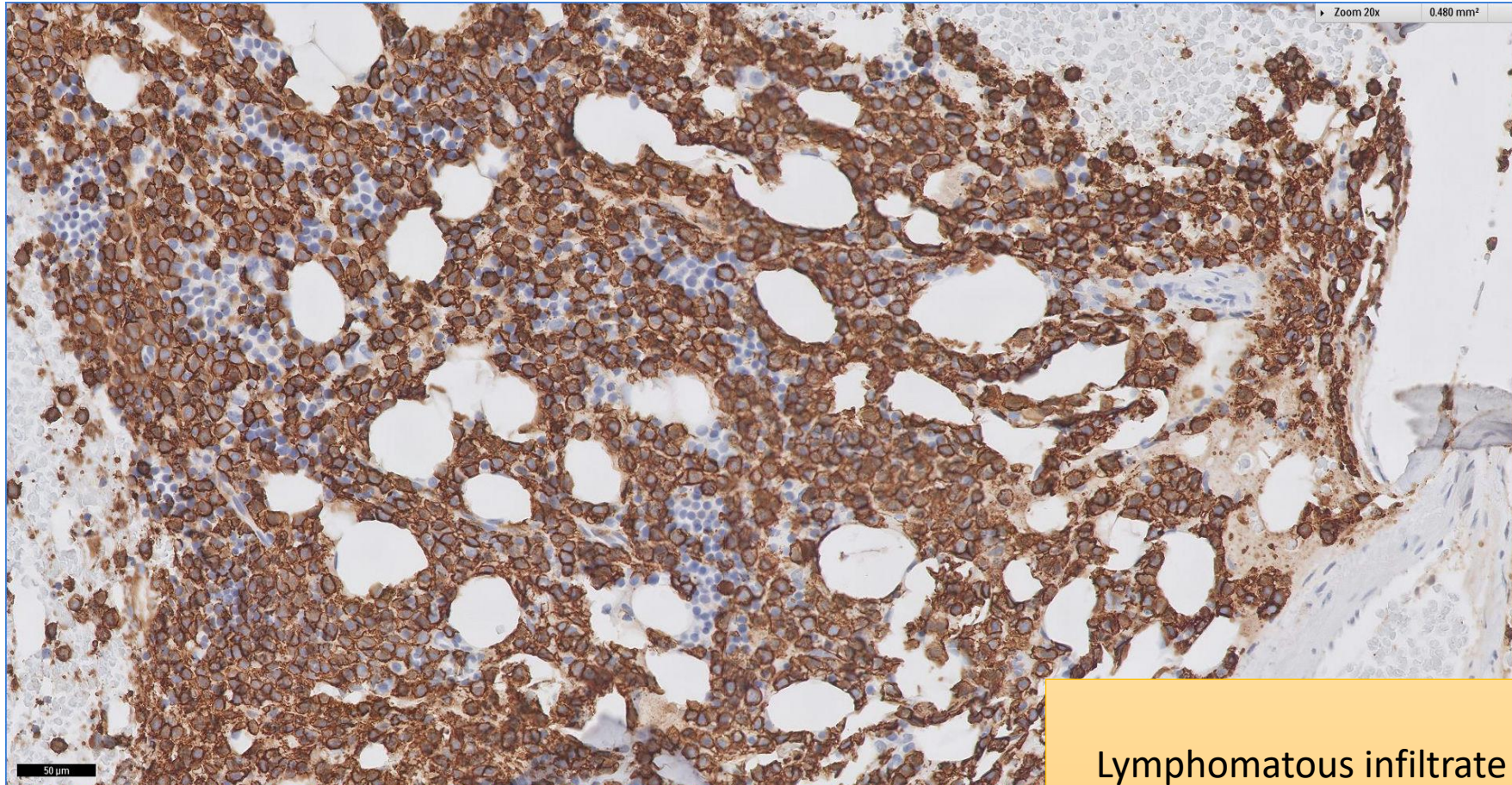
Lymphomatous infiltrate is diffusely positive for Annexin A1 (bottom right reactive follicle is negative)

SGH CASE 5: 17RE105 BONE MARROW H&E



Bone marrow shows infiltrate of lymphomatous cells with ample pale cytoplasm

SGH CASE 5: 17RE105 BONE MARROW CD20



Lymphomatous infiltrate is diffusely
CD20 positive

SGH CASE 5: 17RE105

- Diagnosis
 - Hairy Cell Leukaemia (CD10 positive) involving lymph node and bone marrow