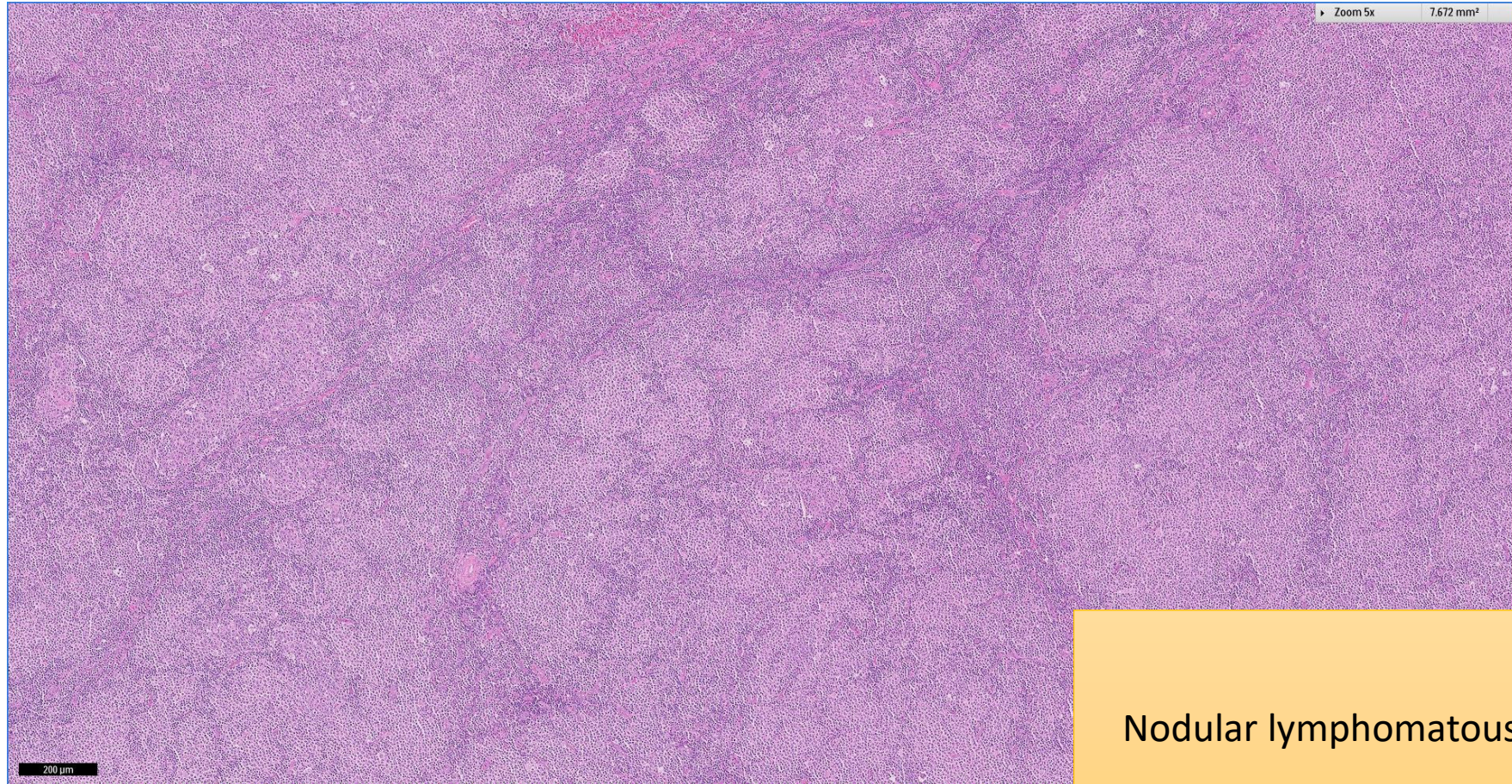


SGH CASE 2: 17RE91

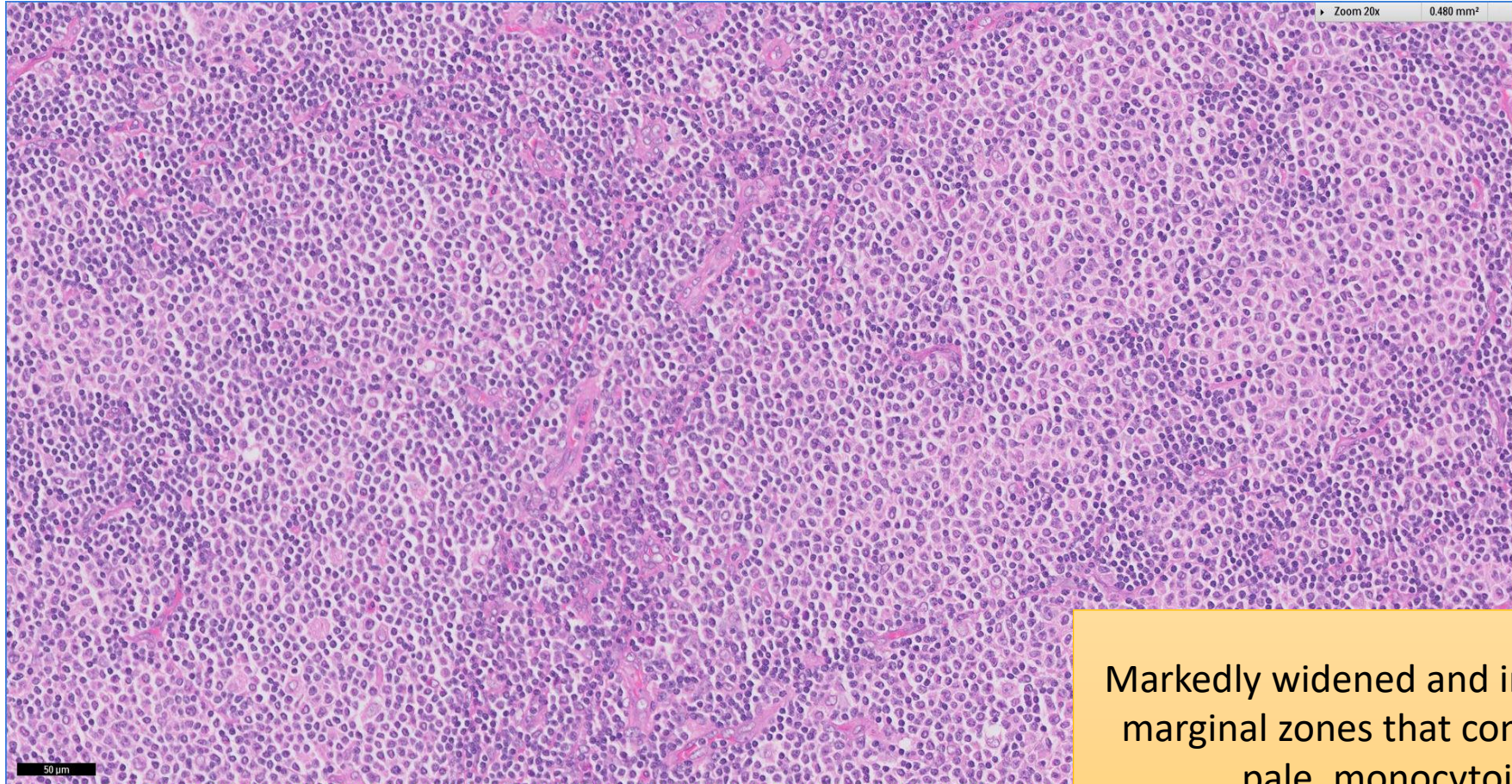
- Clinical History:
 - 50+years old (late 50s), Male
- Specimen:
 - Left submandibular lymph node

SGH CASE 2: 17RE91 H&E



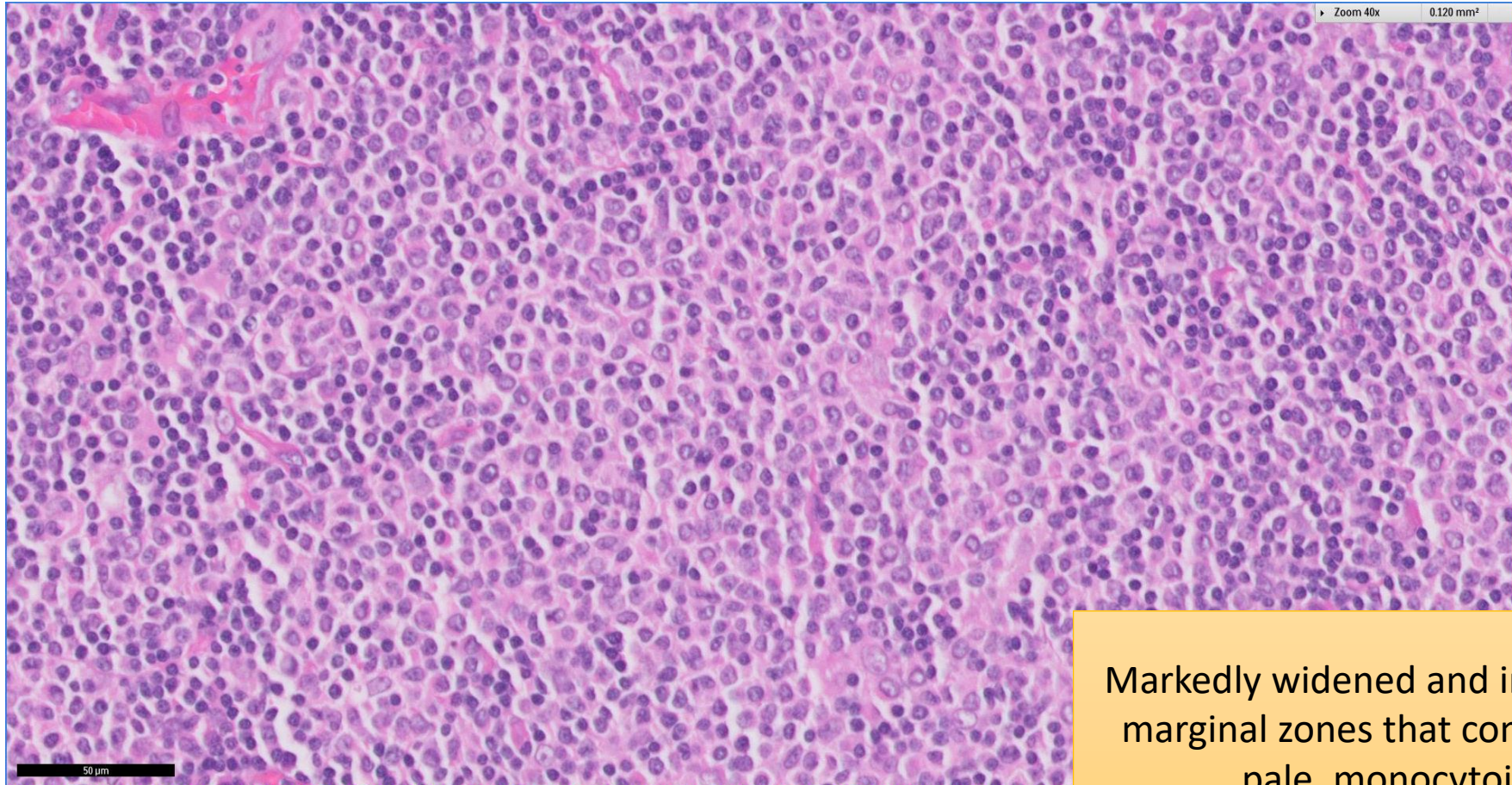
Nodular lymphomatous proliferation

SGH CASE 2: 17RE91 H&E



Markedly widened and interconnected marginal zones that comprise mainly pale, monocytonoid cells

SGH CASE 2: 17RE91 H&E



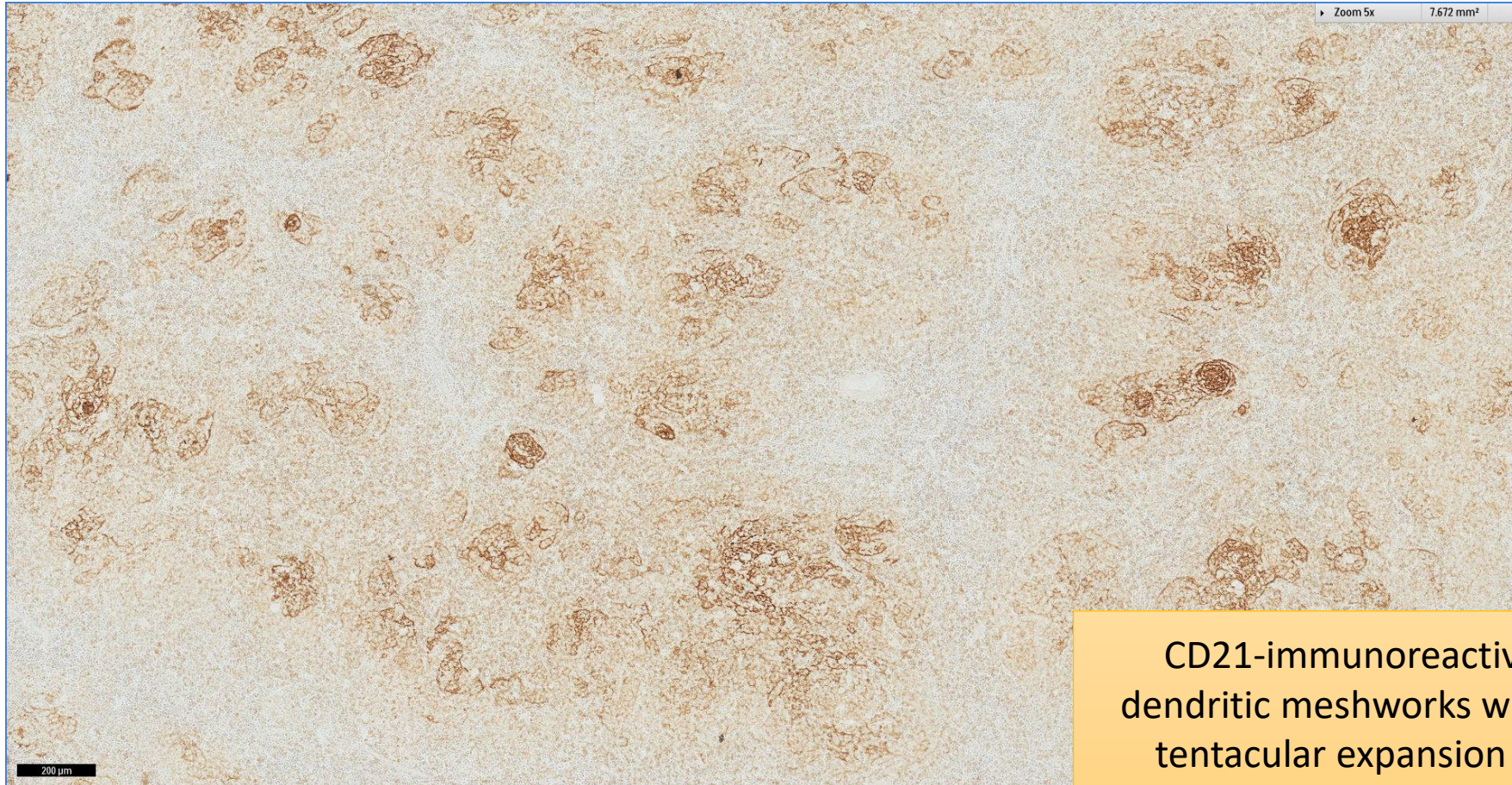
Markedly widened and interconnected marginal zones that comprise mainly pale, monocytonoid cells

SGH CASE 2: 17RE91 CD20



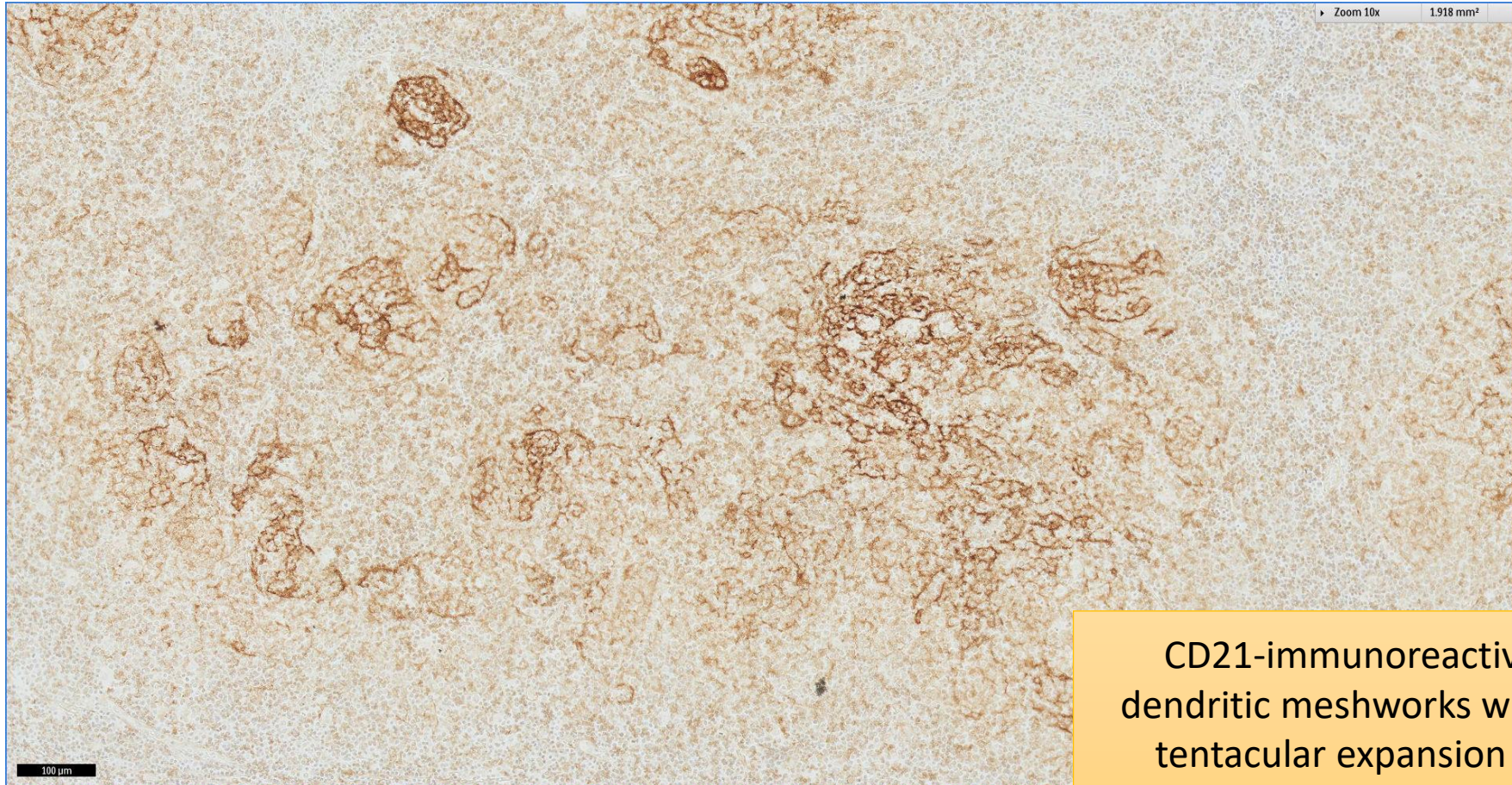
Diffusely and confluent positive for
CD20

SGH CASE 2: 17RE91 CD21



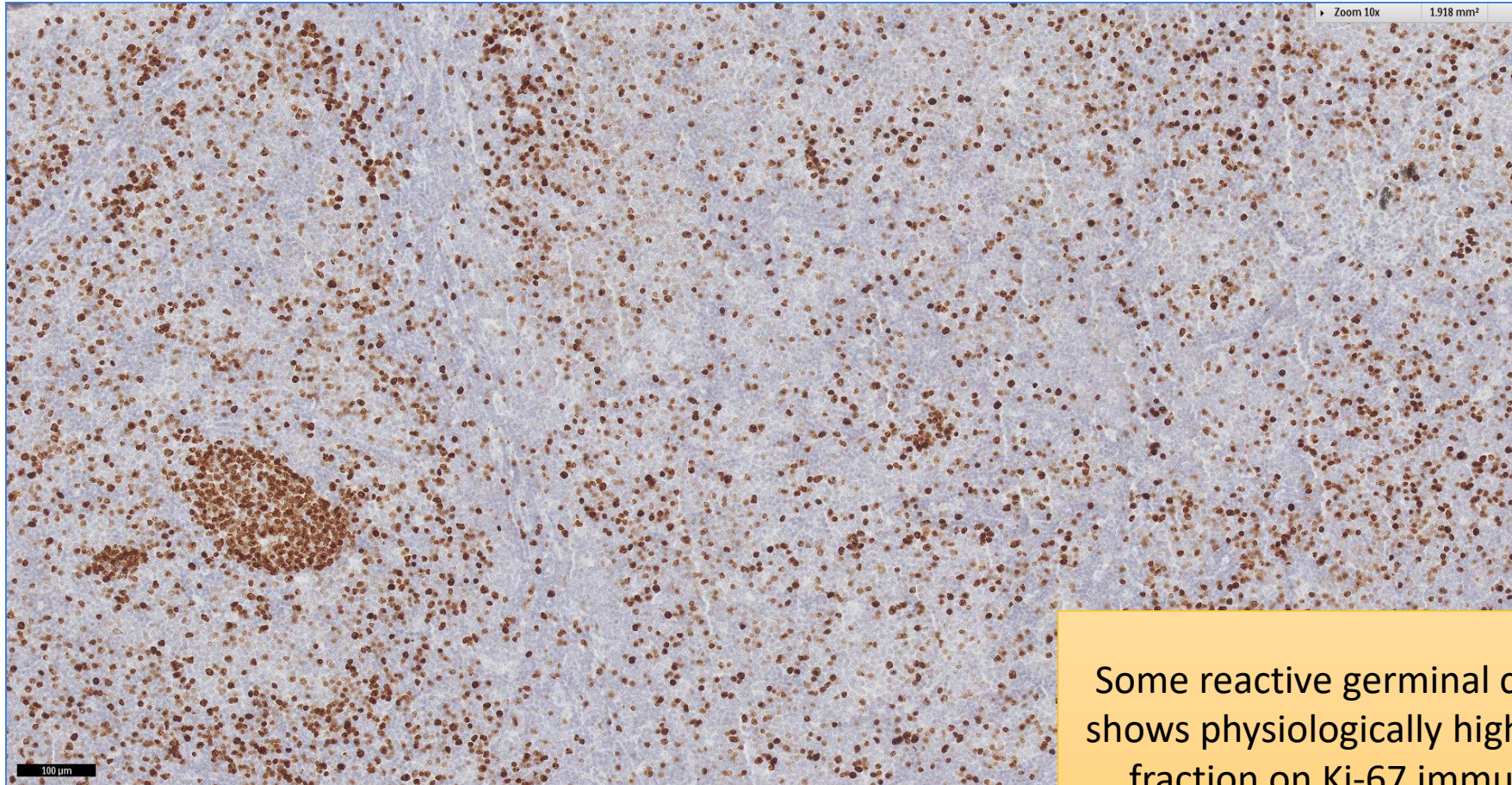
CD21-immunoreactive follicular dendritic meshworks with peripheral tentacular expansion and fraying reflecting follicular colonisation

SGH CASE 2: 17RE91 CD21



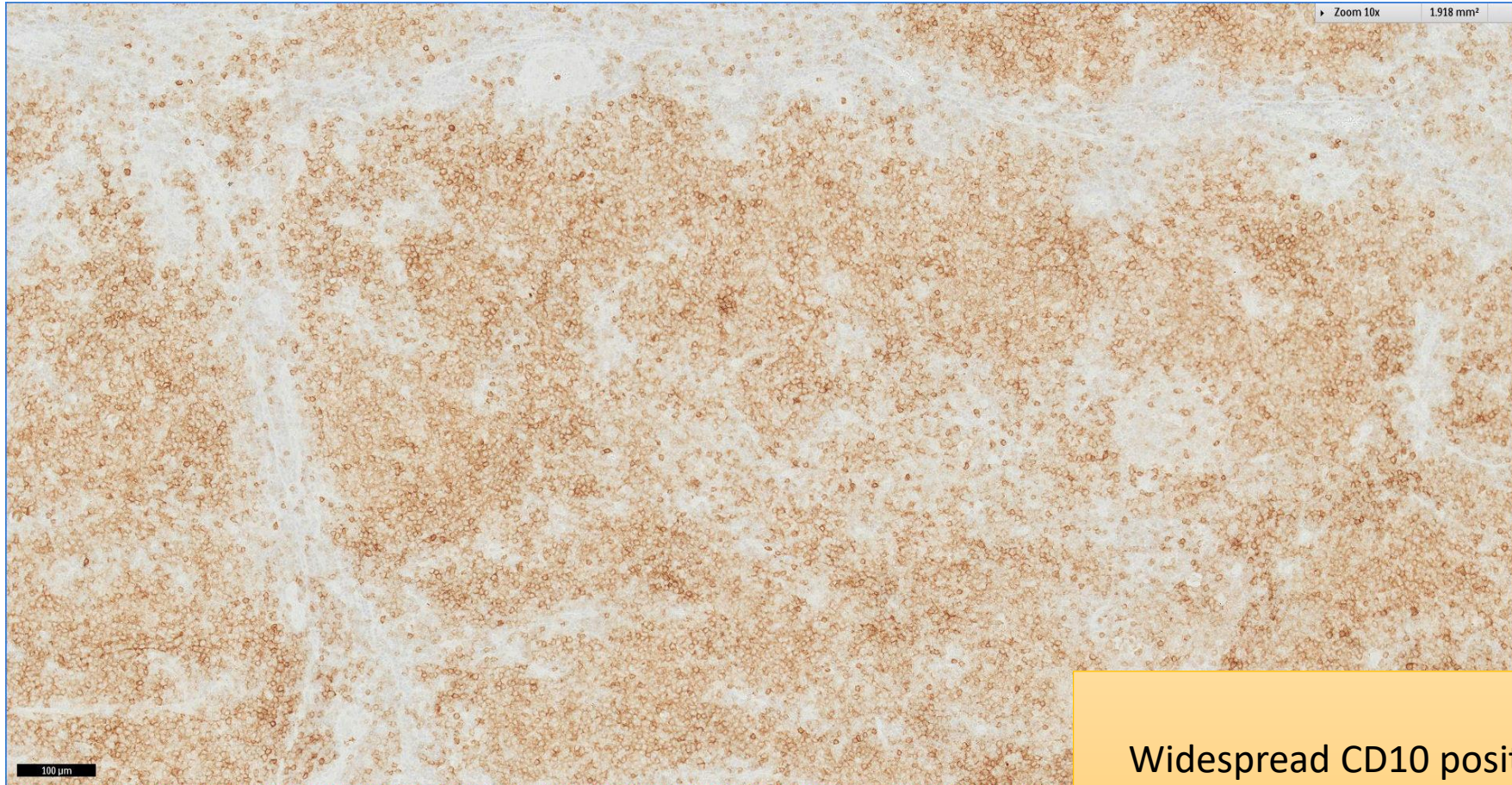
CD21-immunoreactive follicular dendritic meshworks with peripheral tentacular expansion and fraying reflecting follicular colonisation

SGH CASE 2: 17RE91 KI67



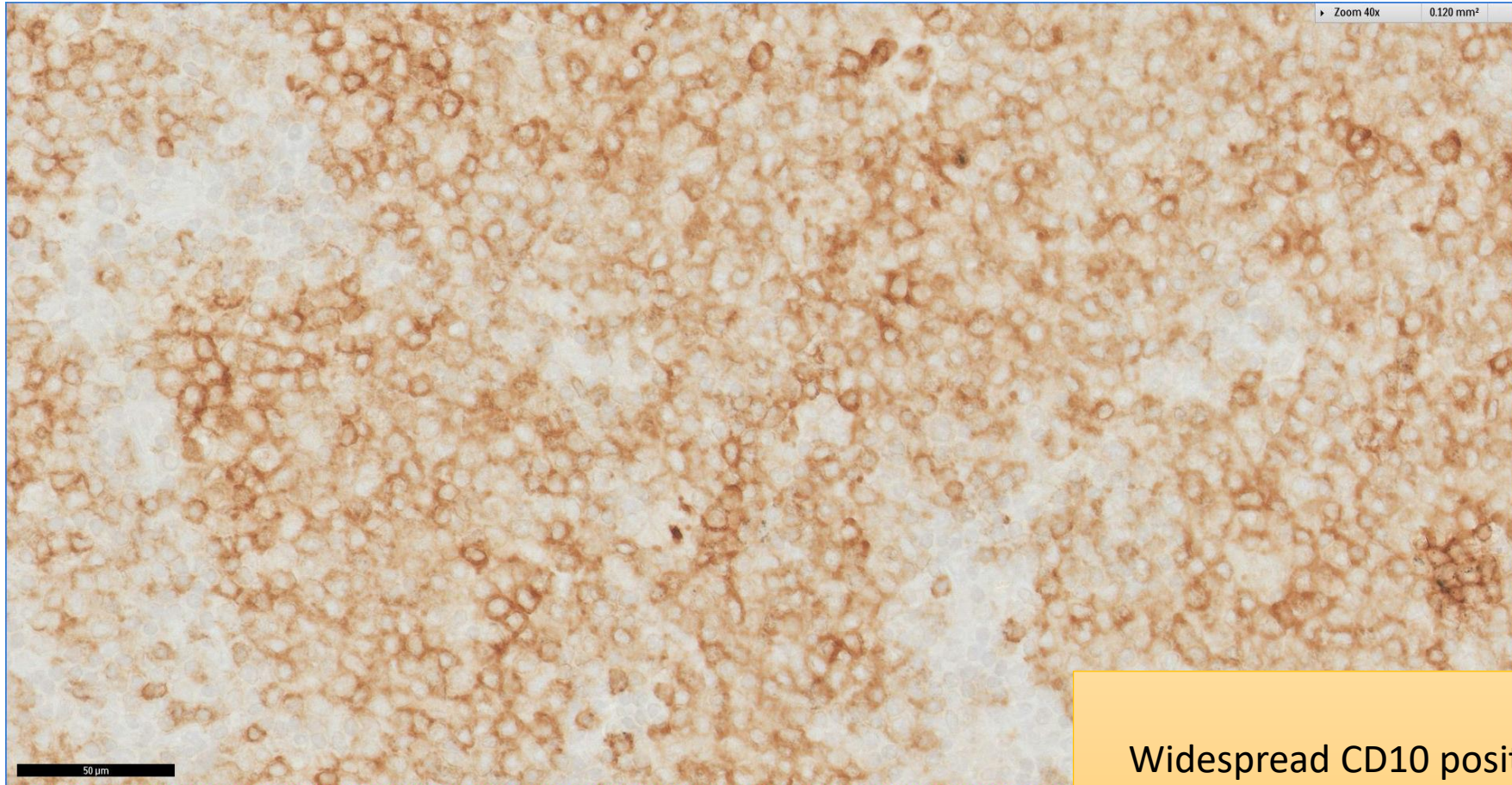
Some reactive germinal centres which shows physiologically high proliferation fraction on Ki-67 immunolabelling

SGH CASE 2: 17RE91 CD10



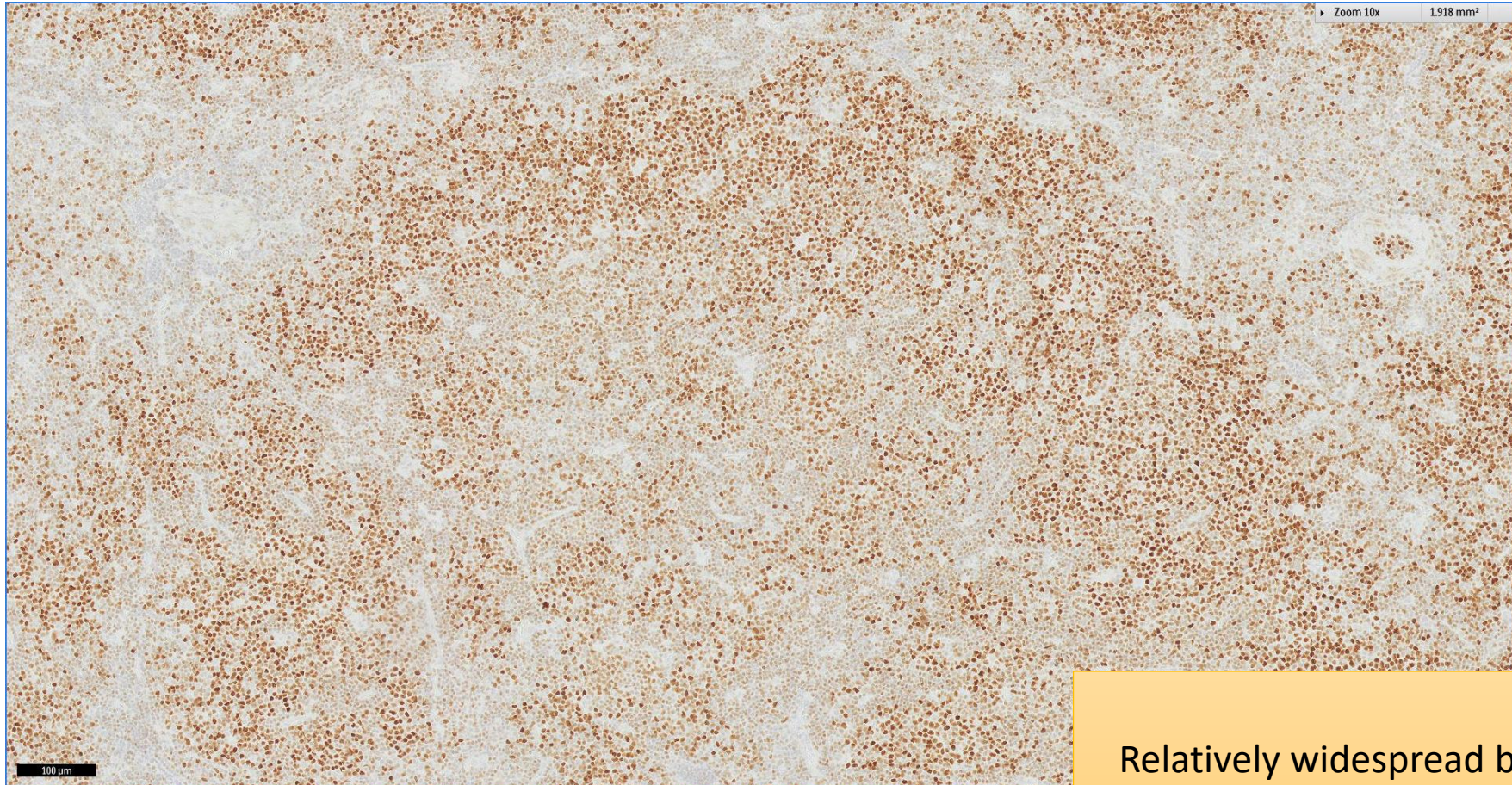
Widespread CD10 positivity present

SGH CASE 2: 17RE91 CD10



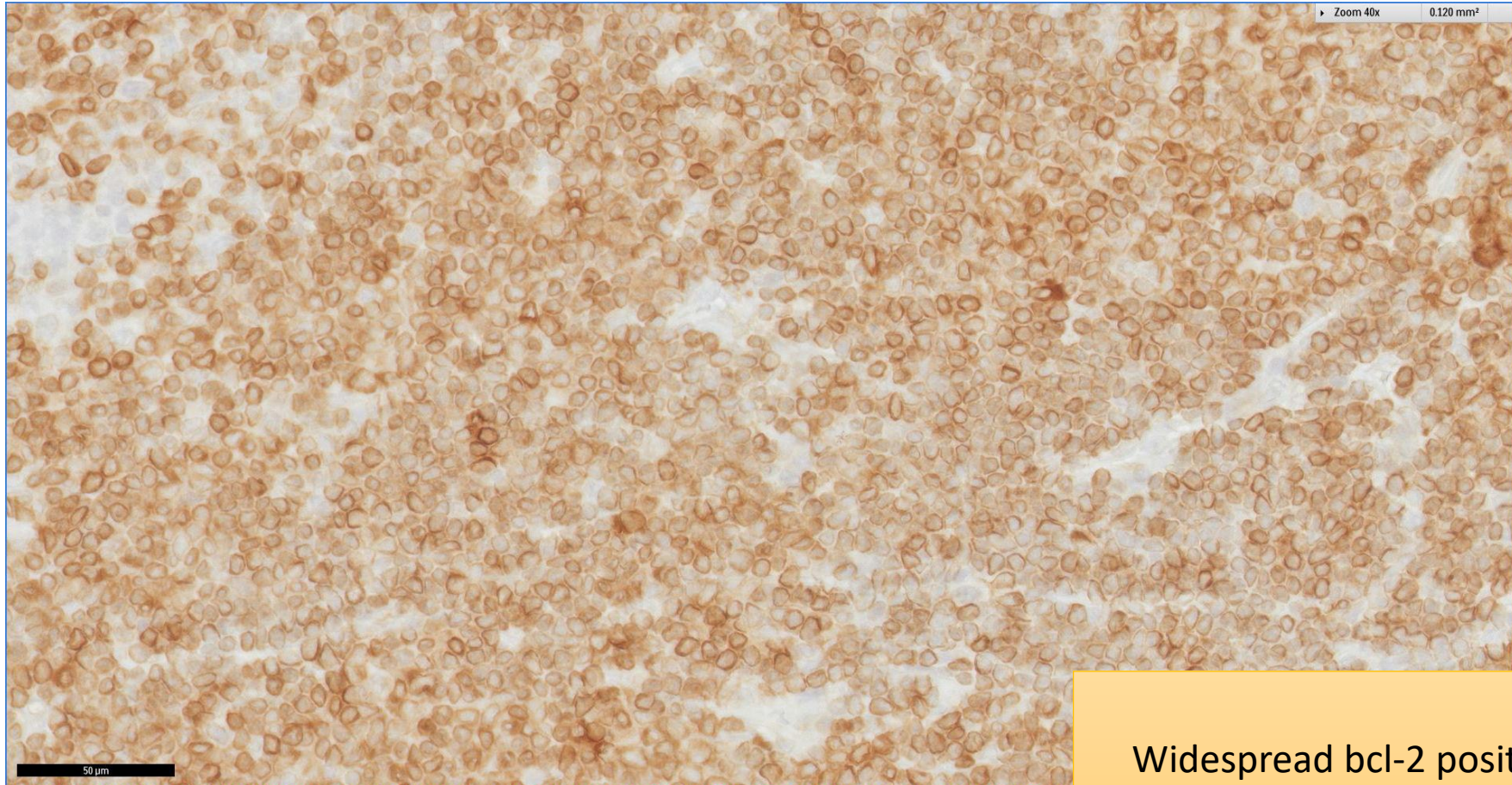
Widespread CD10 positivity present

SGH CASE 2: 17RE91 BCL6



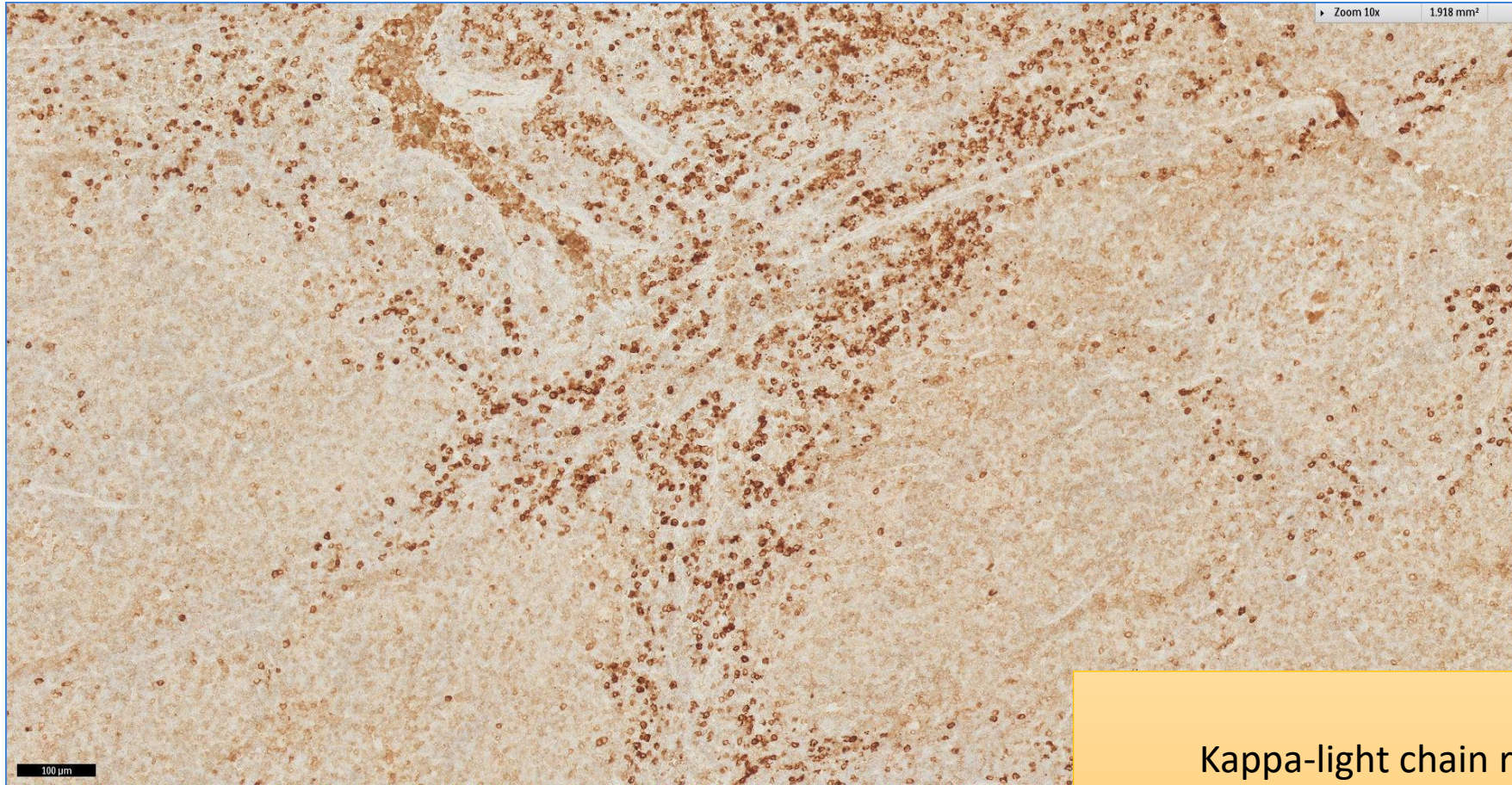
Relatively widespread bcl-6 positivity

SGH CASE 2: 17RE91 BCL2



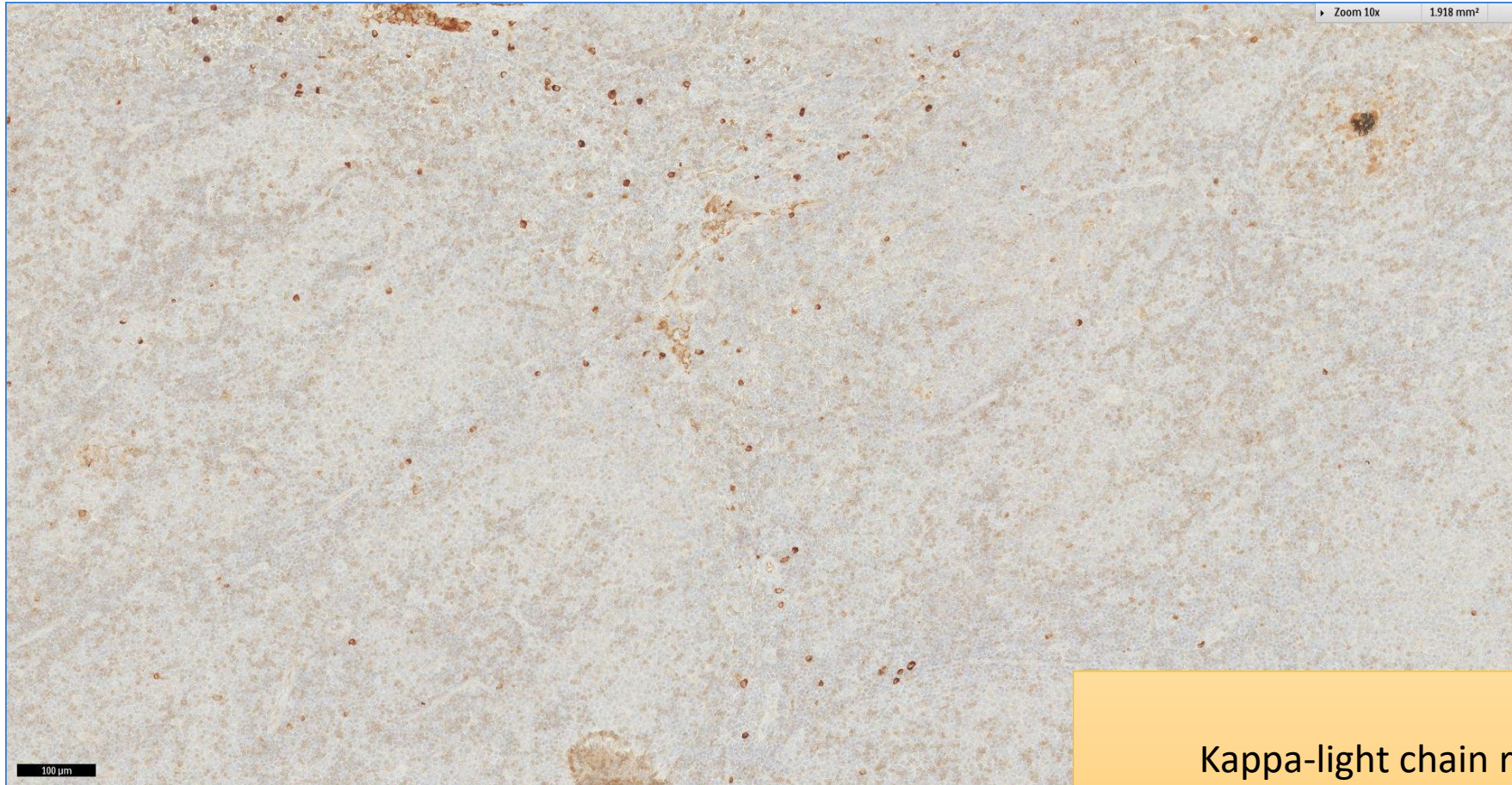
Widespread bcl-2 positivity present

SGH CASE 2: 17RE91 KAPPA IHC



Kappa-light chain restricted

SGH CASE 2: 17RE91 LAMBDA IHC



Kappa-light chain restricted

SGH CASE 2: 17RE91

- Diagnosis
 - Nodal Marginal Zone Lymphoma
- Molecular cytogenetic studies:
 - Absence of BCL-2, BCL-6 and IGH translocations by breakapart fluorescence in-situ hybridisation (FISH).
 - Three copies each of BCL-2 and MALT-1, in keeping with a trisomy of (at least the long arm of) Chromosome 18, more in keeping with marginal zone lymphoma