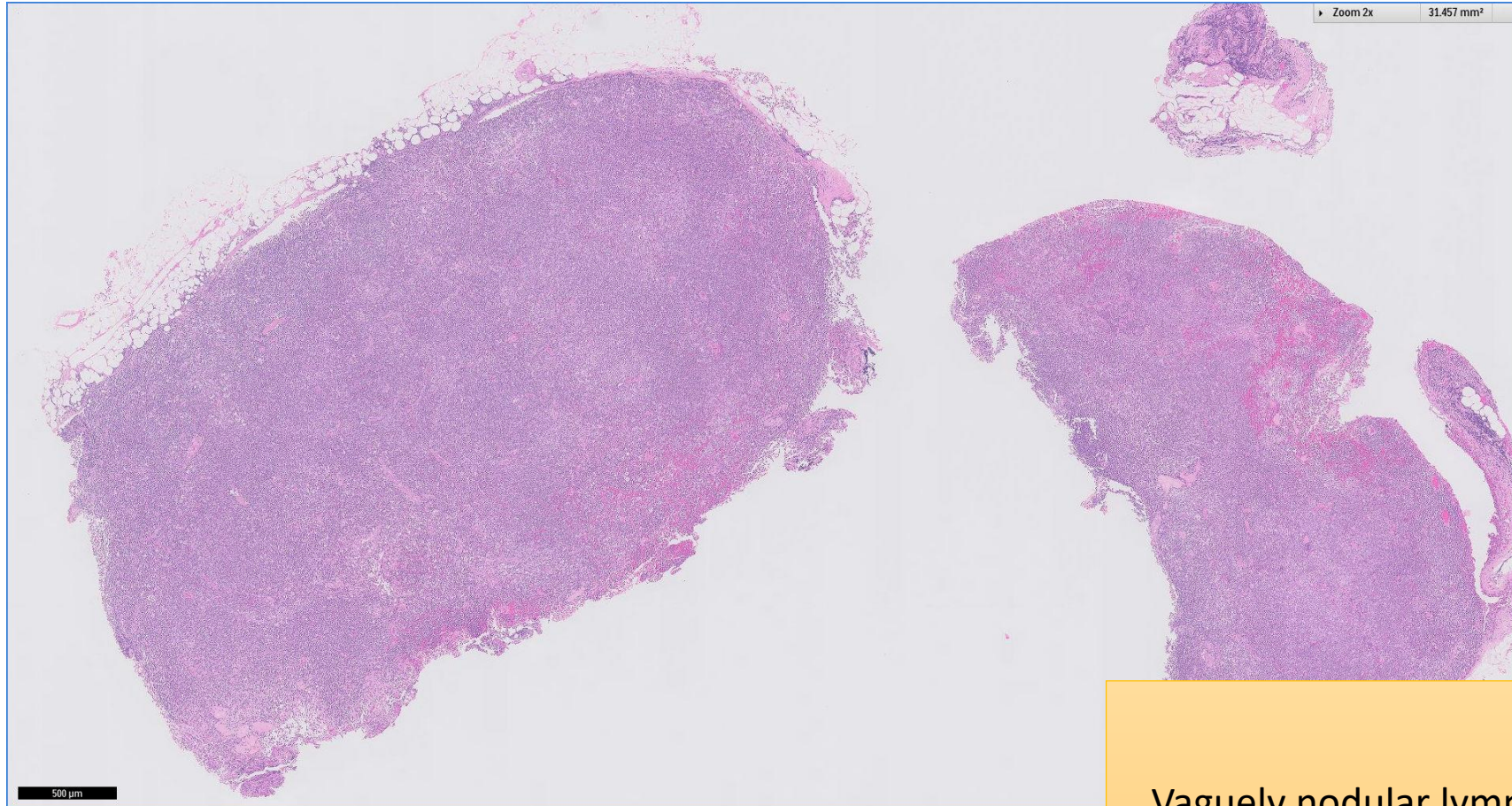


SGH CASE 1: 17RE90

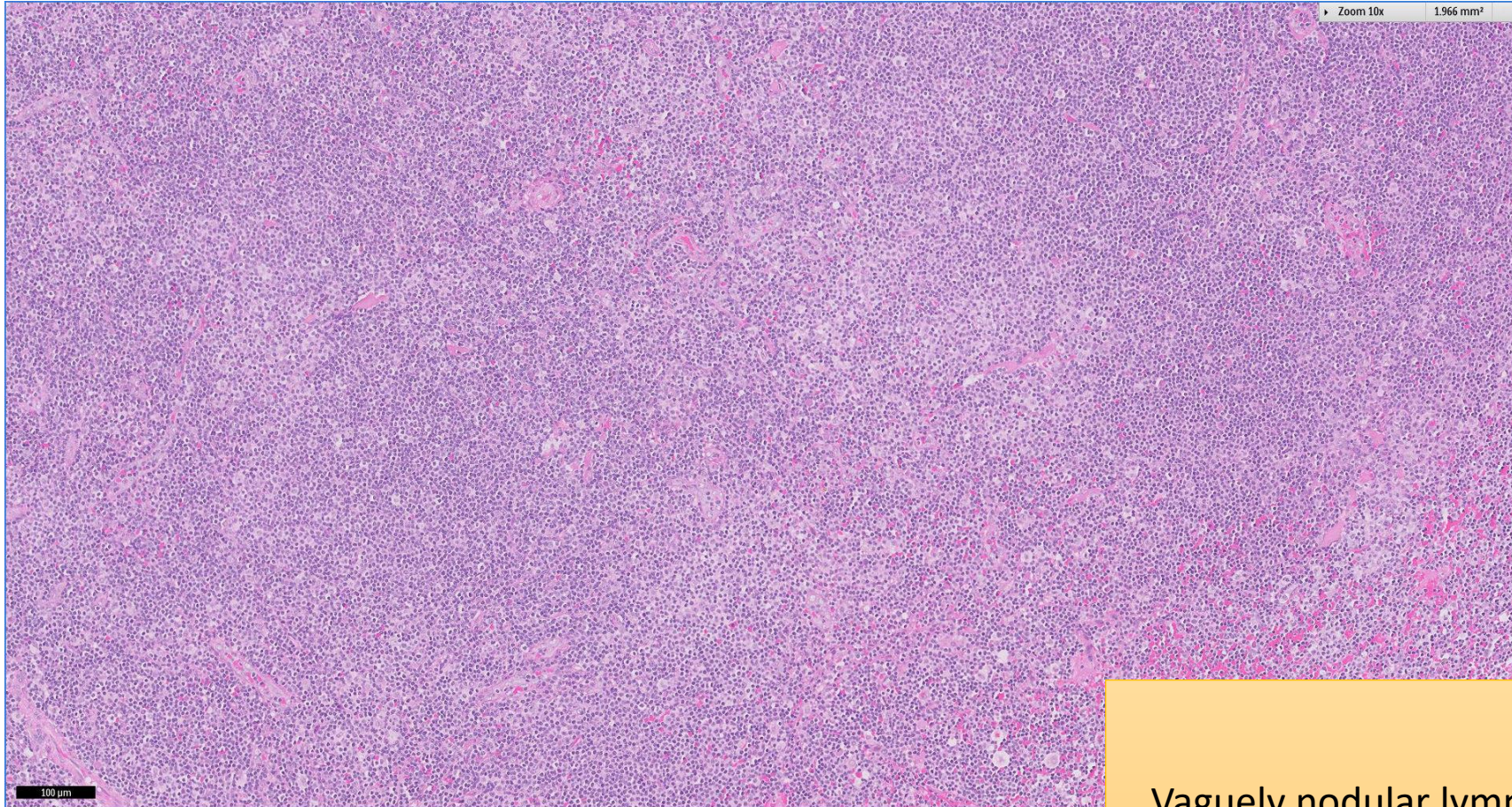
- Clinical History:
 - 60+ years old (late 60s). Male. CT scan shows splenomegaly with prominent lymph nodes in the abdomen, pelvis, axilla and mediastinum.
- Specimen:
 - Right level 5 cervical lymph node

SGH CASE 1: 17RE90 H&E



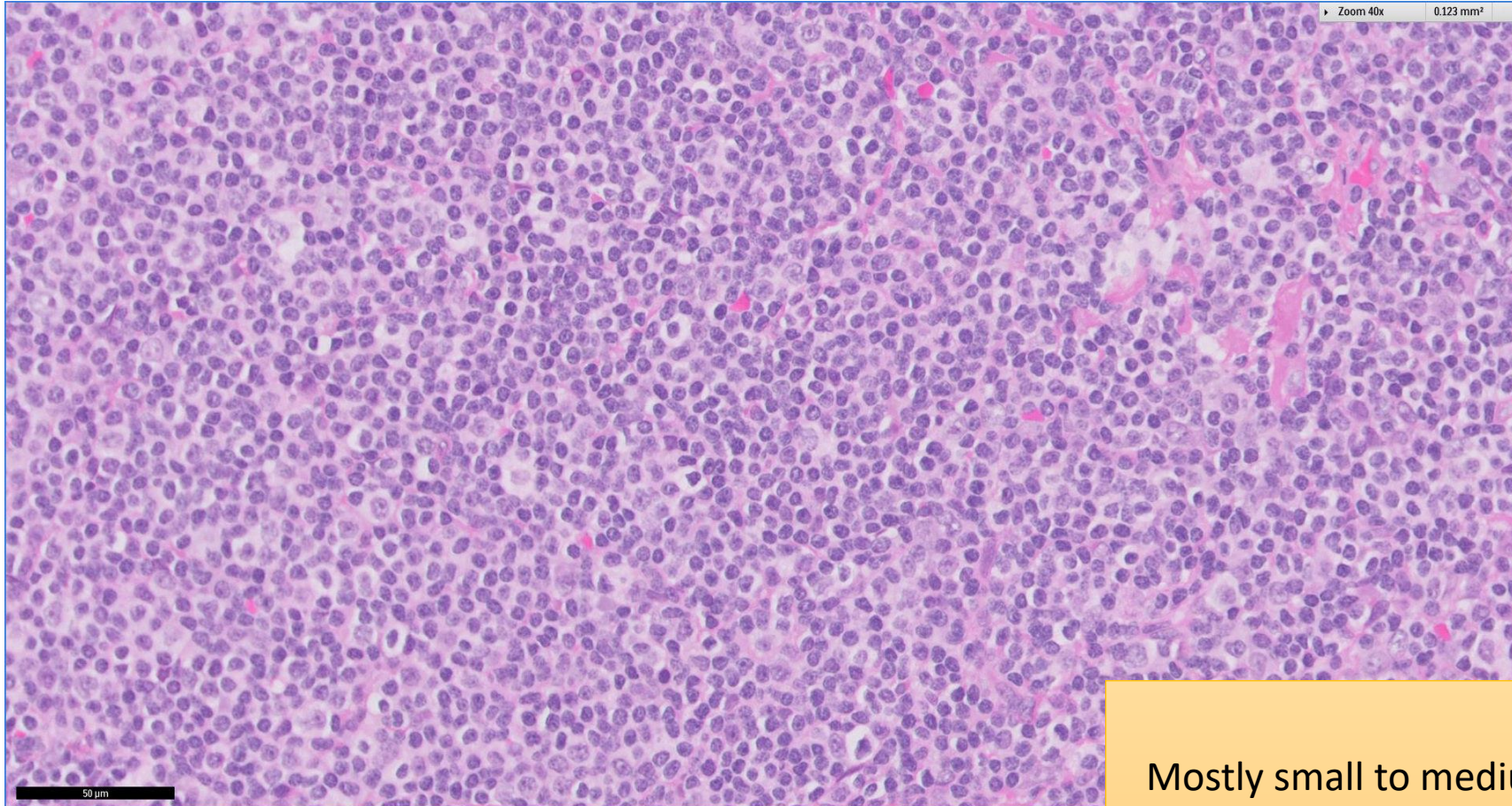
Vaguely nodular lymphoid proliferation

SGH CASE 1: 17RE90 H&E



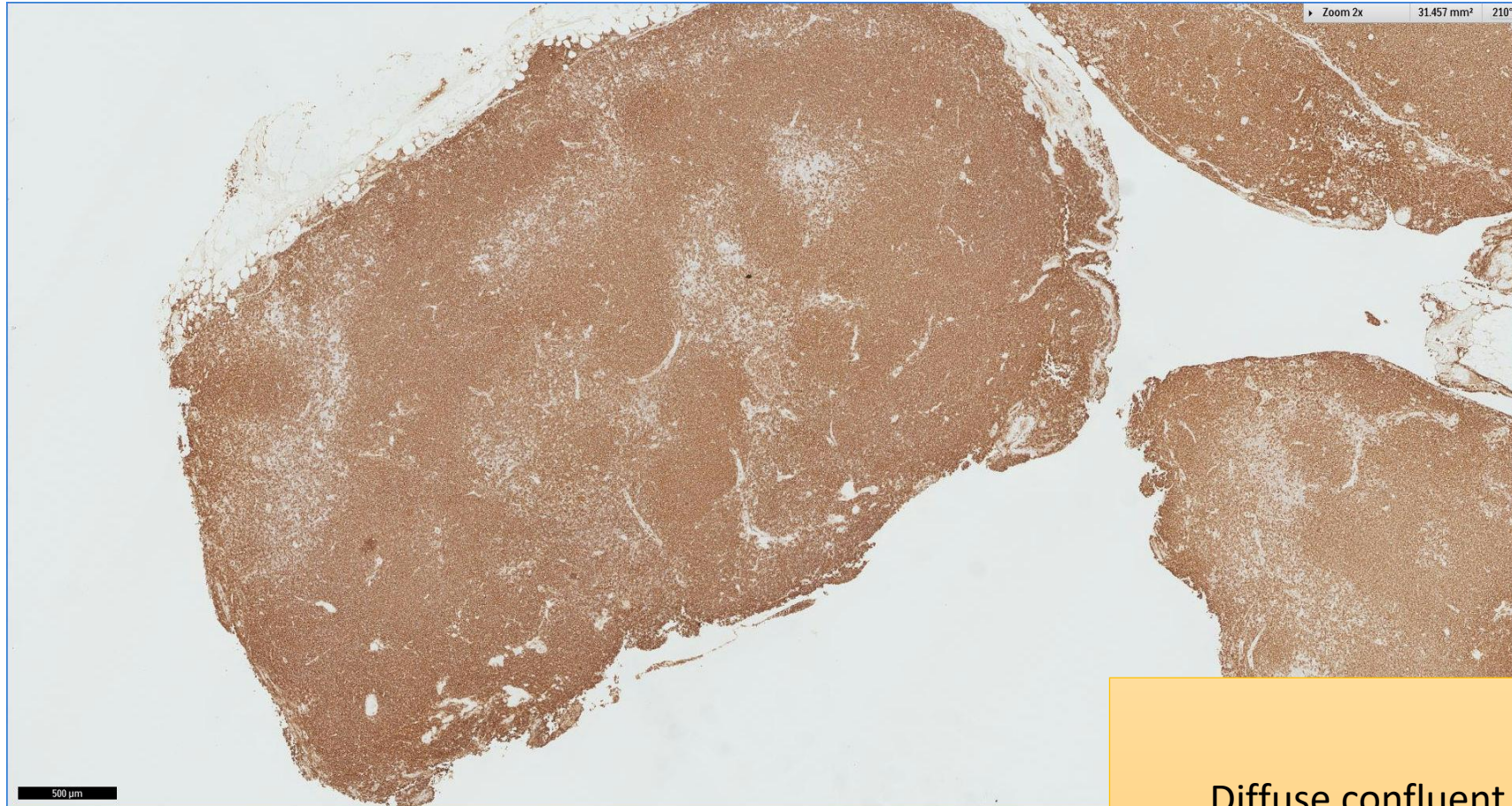
Vaguely nodular lymphoid proliferation

SGH CASE 1: 17RE90 H&E



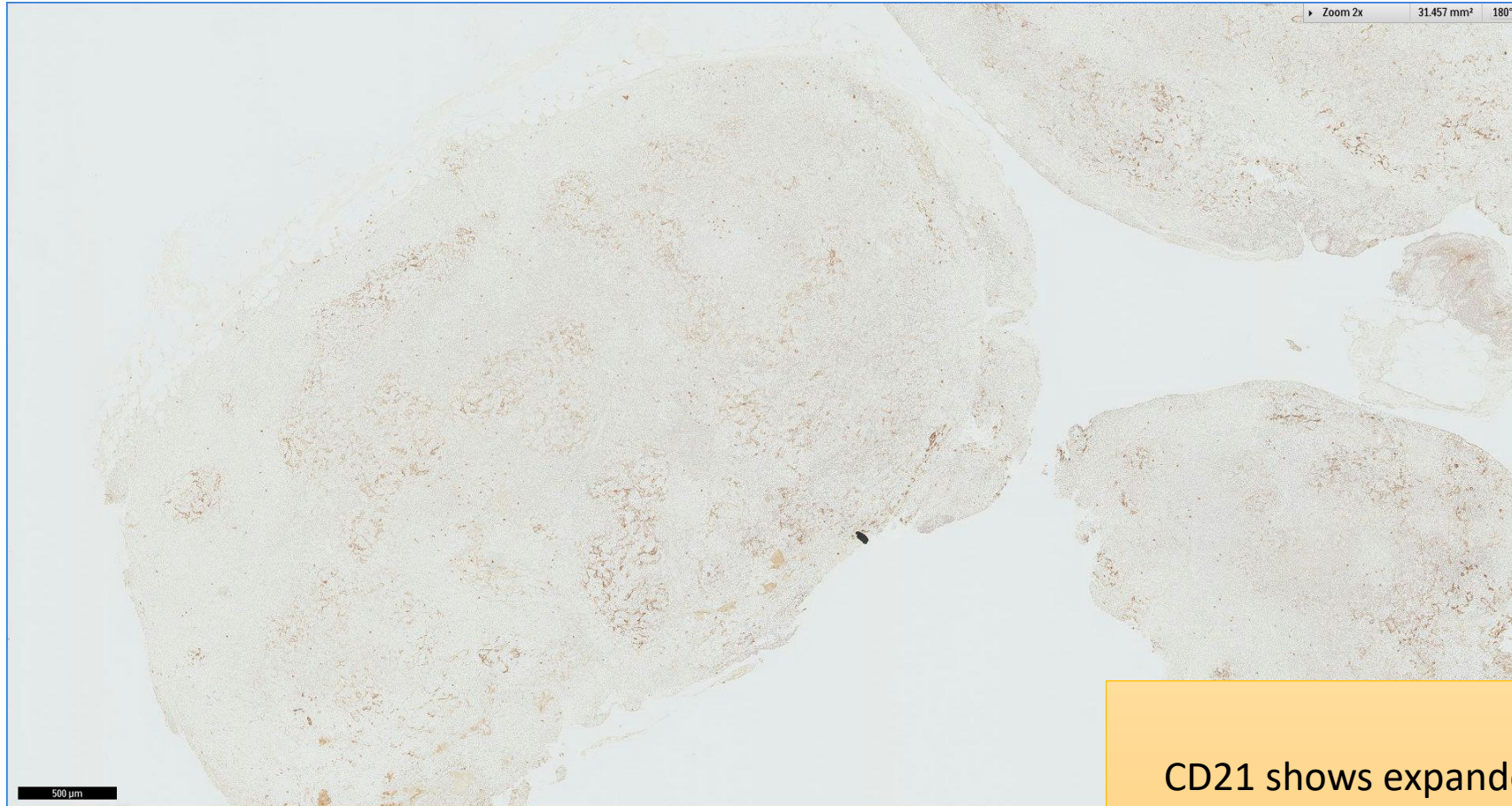
Mostly small to medium sized lymphoid cells with scattered nucleolated cells

SGH CASE 1: 17RE90 CD20



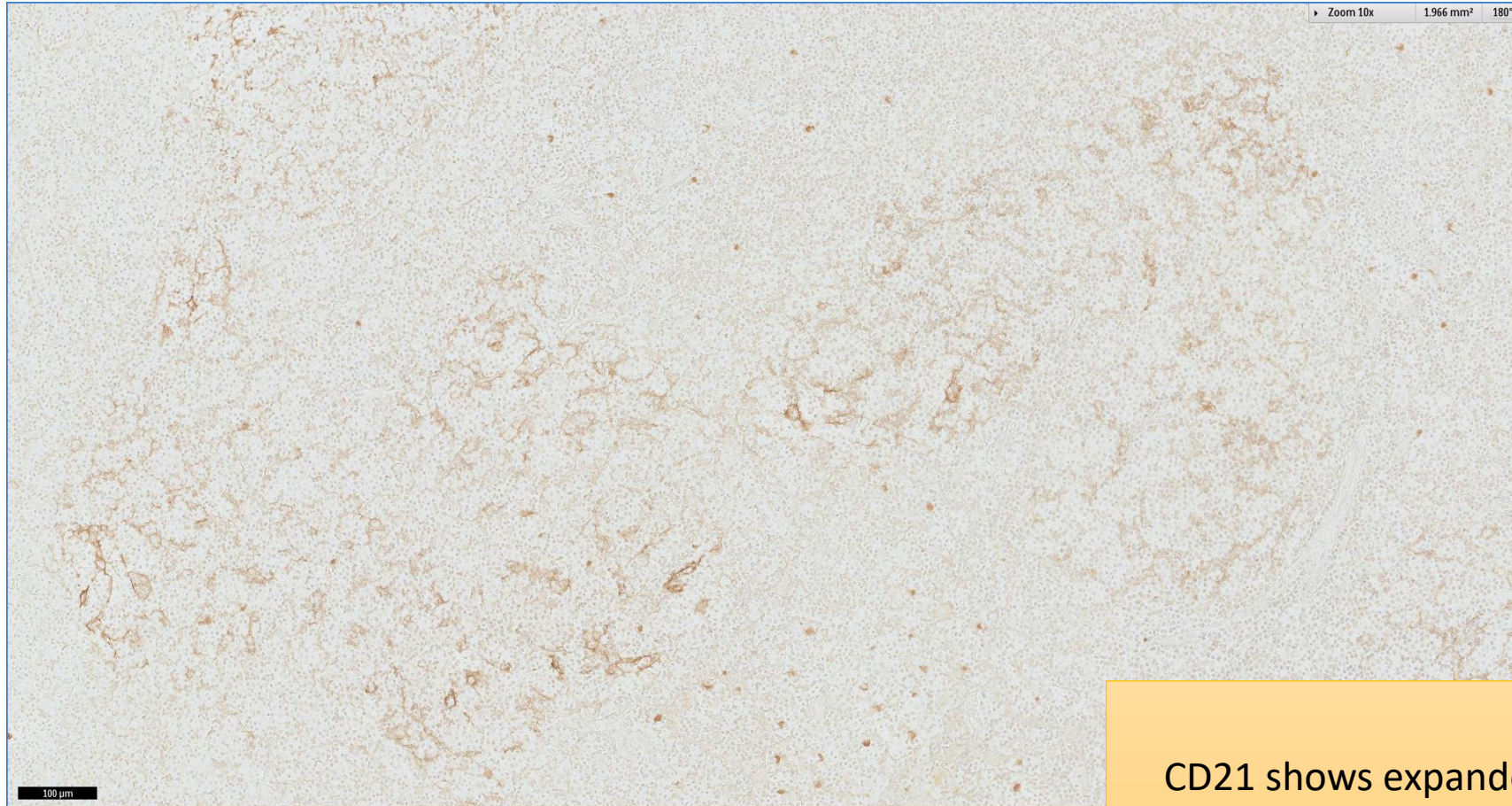
Diffuse confluent CD20 positivity

SGH CASE 1: 17RE90 CD21



CD21 shows expanded, disrupted and peripherally frayed meshworks

SGH CASE 1: 17RE90 CD21



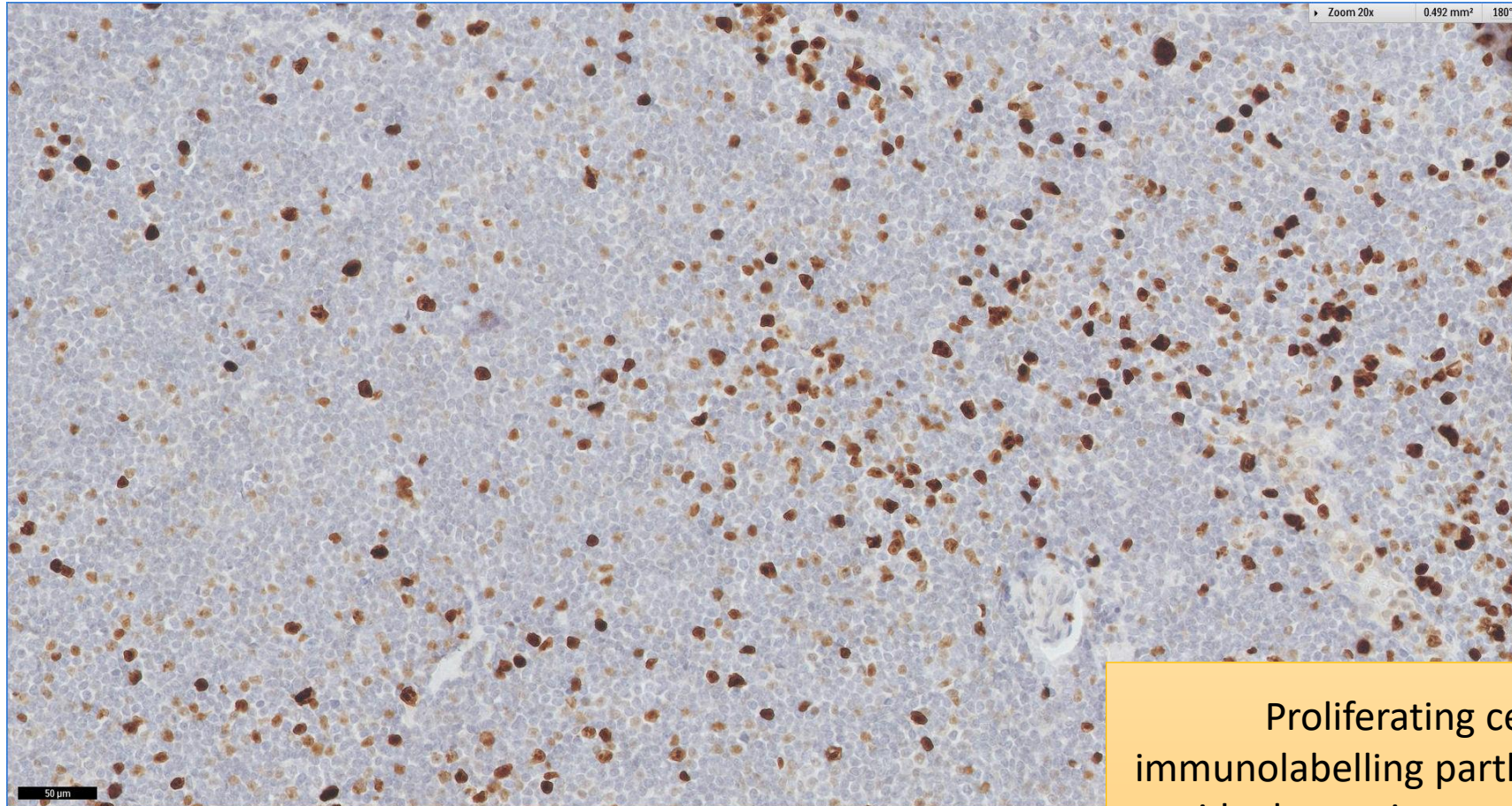
CD21 shows expanded, disrupted and peripherally frayed meshworks

SGH CASE 1: 17RE90 KI67



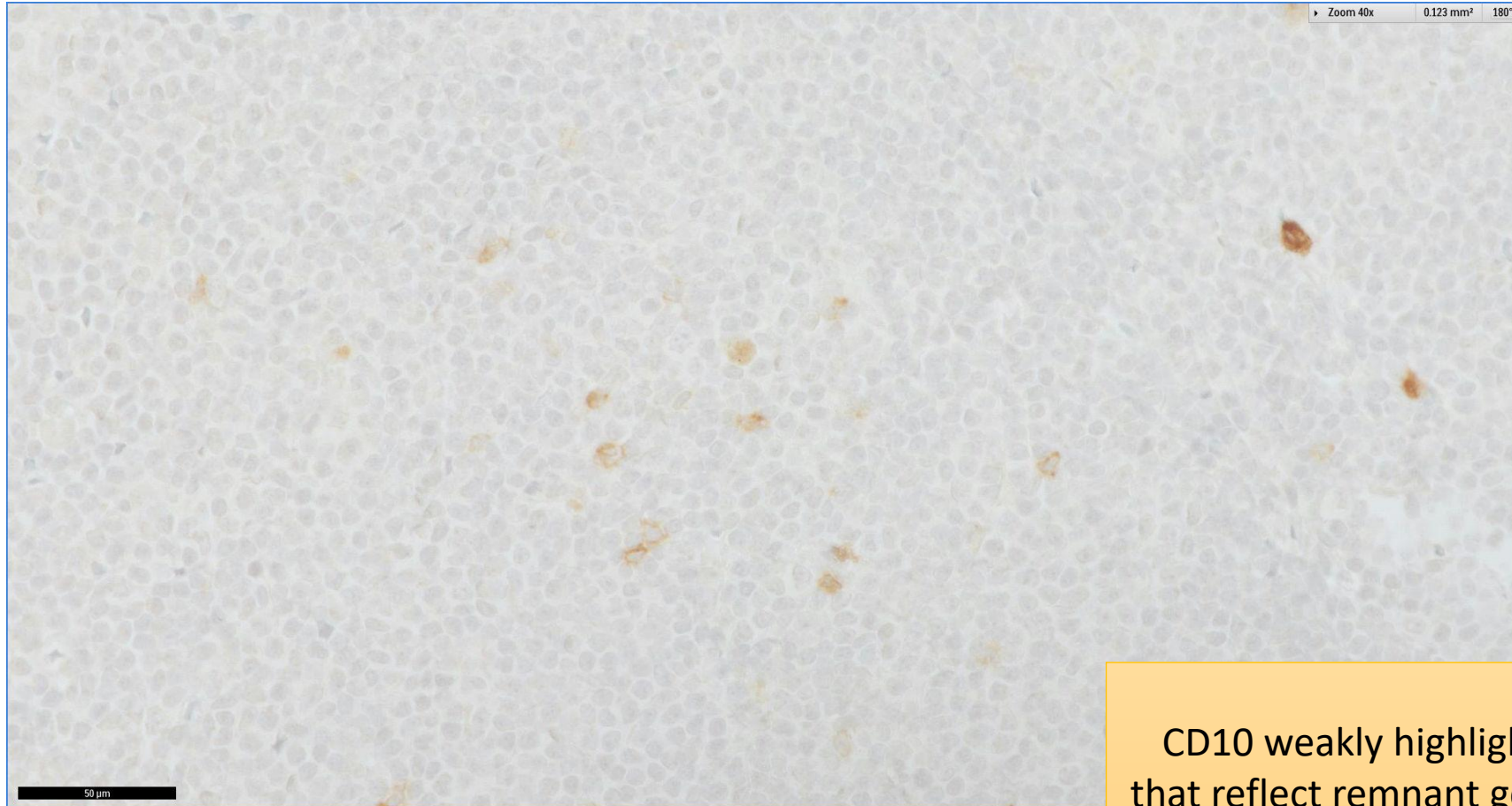
Proliferating cells on Ki-67 immunolabelling partly reflect dispersed, residual, reactive germinal centre blasts within colonised follicles

SGH CASE 1: 17RE90 KI67



Proliferating cells on Ki-67 immunolabelling partly reflect dispersed, residual, reactive germinal centre blasts within colonised follicles

SGH CASE 1: 17RE90 CD10



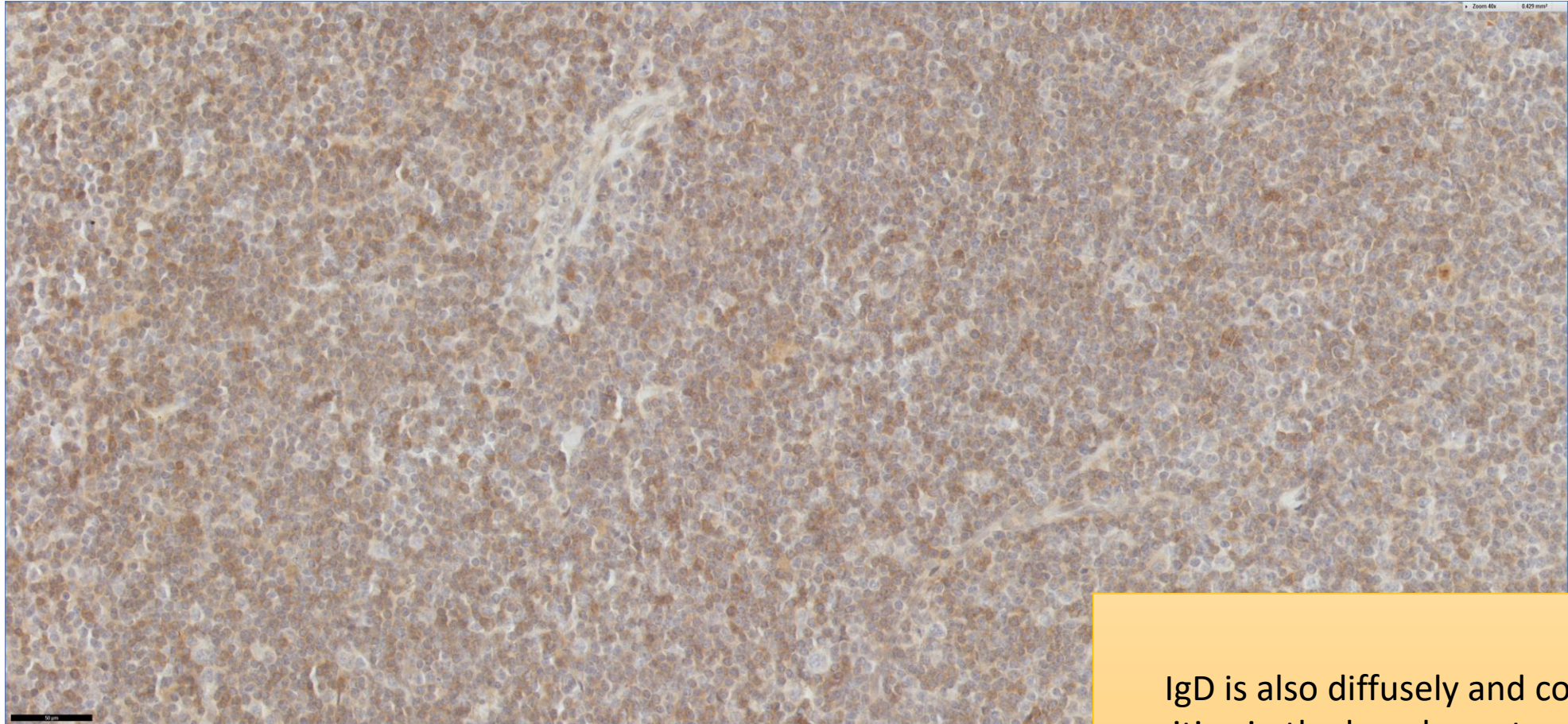
CD10 weakly highlights scattered cells that reflect remnant germinal centre cells from colonised follicles

SGH CASE 1: 17RE90 IgD



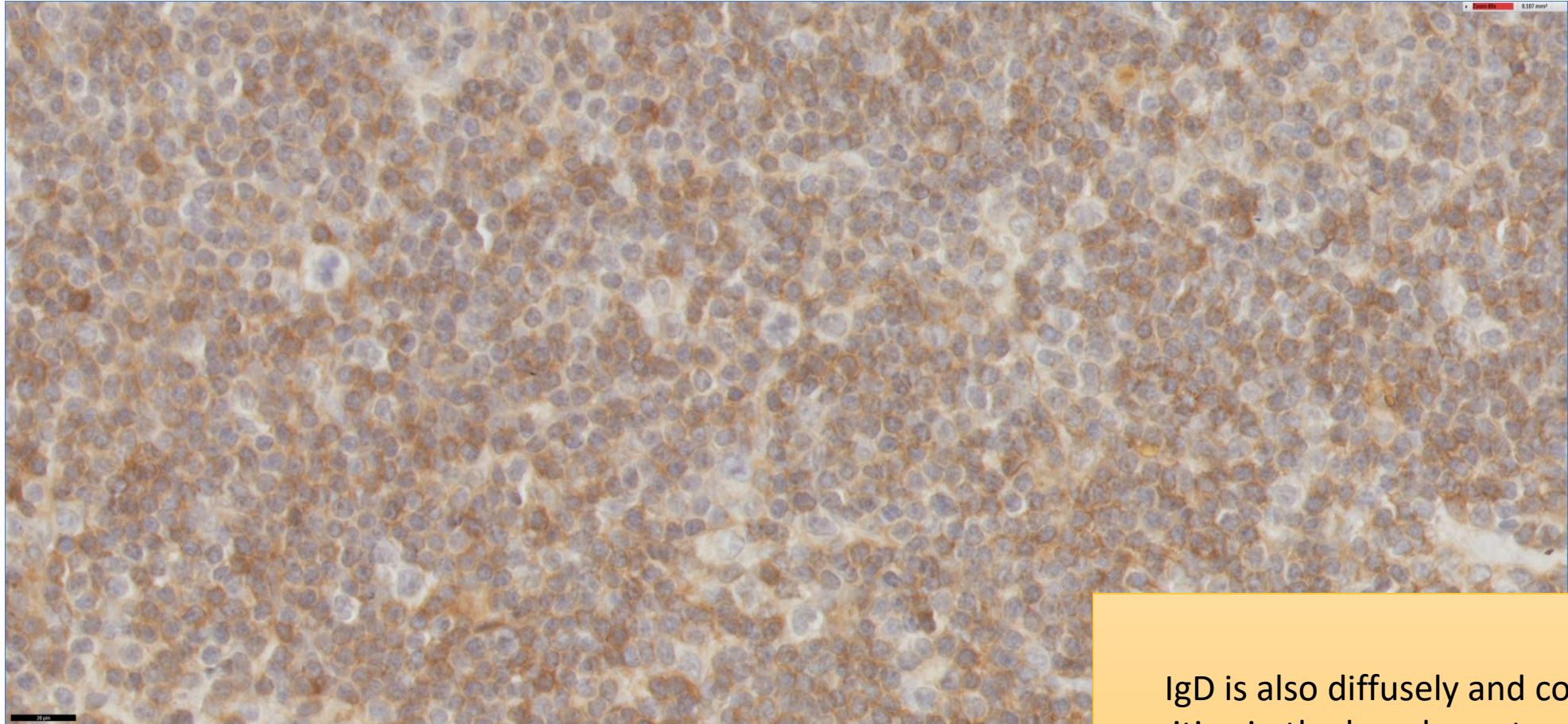
IgD is also diffusely and confluenty positive in the lymphomatous population

SGH CASE 1: 17RE90 IgD



IgD is also diffusely and confluenty positive in the lymphomatous population

SGH CASE 1: 17RE90 IgD



IgD is also diffusely and confluent positive in the lymphomatous population

SGH CASE 1: 17RE90

- Diagnosis
 - Involved by Marginal Zone Lymphoma (Likely Splenic Origin)