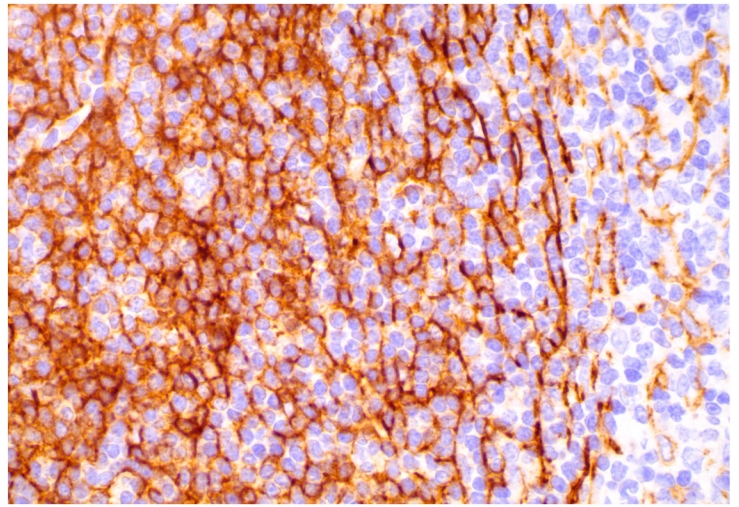
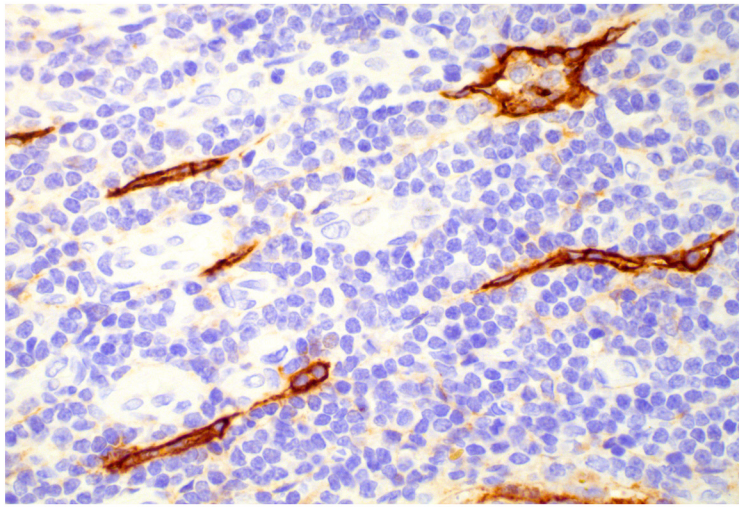
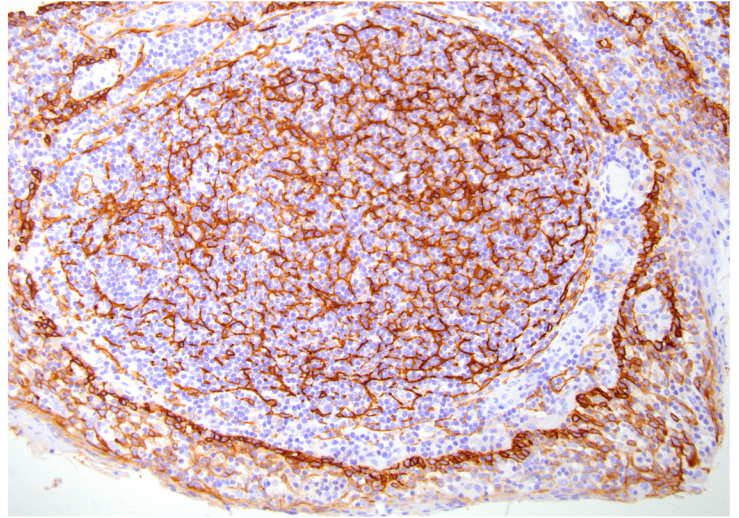
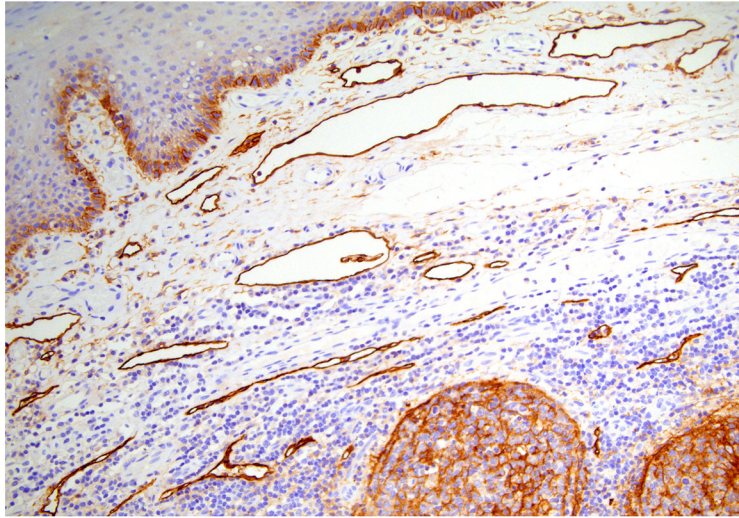


D2-40 Podoplanin

This antibody recognizes an O-linked sialoglycoprotein found on lymphatic endothelium but not in capillaries. It is also expressed on foetal testis and on the surface of testicular germ cell tumours.

Positive control tissues: Tonsil

Vendor, Catalogue	Instrument	Detection	Antibody Concentration	Pre-treatment
COVANCE, SIG-3730	Bondmax	Polymer Refine kit, Vision Biosystem DS9800	1:25 for 20 mins	ER1 for 20 mins



Applications:

The membrane protein Podoplanin is a mucin-type sialoglycoprotein known to be a useful marker for lymphatic endothelium. The monoclonal antibody D2-40 recognizes podoplanin, which is also an established marker for germ cell tumors, mesotheliomas, and other tumor types. It is also expressed in a variety of normal cells including follicular dendritic cells. Lymphatic vascular invasion as highlighted by immunostaining with D2-40 has been shown to be a strong predictor of nodal metastasis in various cancers such as breast, oesophagus, uterus and cervix.

References:

- Marsee DK, Pinkus GS, Hornick JL. Podoplanin (D2-40) is a Highly Effective Marker of Follicular Dendritic Cells. *Appl Immunohistochem Mol Morphol*. 2008 Oct 3. [Epub ahead of print]
- de Mascarel I, Macgrogan G, Debled M, Sierankowski G, Brouste V, Mathoulin-Pélissier S, Mauriac L. D2-40 in breast cancer: should we detect more vascular emboli? *Mod Pathol*. 2008 Sep 26. [Epub ahead of print]
- Miyakuni Y, Matsumoto T, Arakawa A, Sonoue H, Suzuki C, Takeda S. Lymphatic invasion according to D2-40 immunostaining is a predictor of nodal metastasis in endometrioid adenocarcinoma of the uterine corpus. *Pathol Int*. 2008 Aug;58(8):471-6.
- Tomita N, Matsumoto T, Hayashi T, Arakawa A, Sonoue H, Kajiyama Y, Tsurumaru M. Lymphatic invasion according to D2-40 immunostaining is a strong predictor of nodal metastasis in superficial squamous cell carcinoma of the esophagus: algorithm for risk of nodal metastasis based on lymphatic invasion. *Pathol Int* 2008 May;58(5):282-7
- Urabe A, Matsumoto T, Kimura M, Sonoue H, Kinoshita K. Grading system of lymphatic invasion according to D2-40 immunostaining is useful for the prediction of nodal metastasis in squamous cell carcinoma of the uterine cervix. *Histopathology* 2006 Nov;49(5):493-7.