

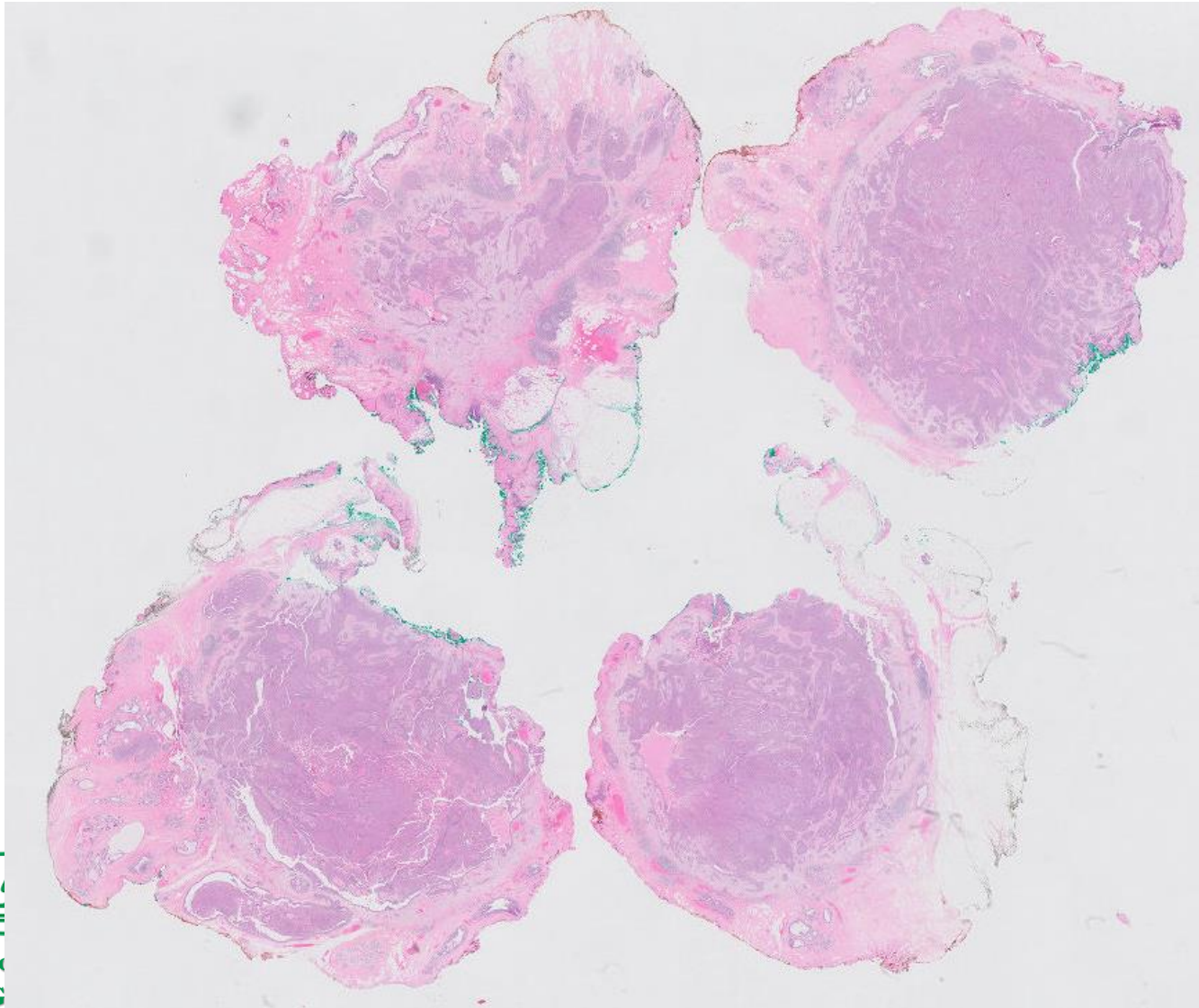
## Case 25

48 year old Chinese female.  
Excision biopsy of a left breast  
retroareolar nodule.

*Presented by Puay Hoon Tan*

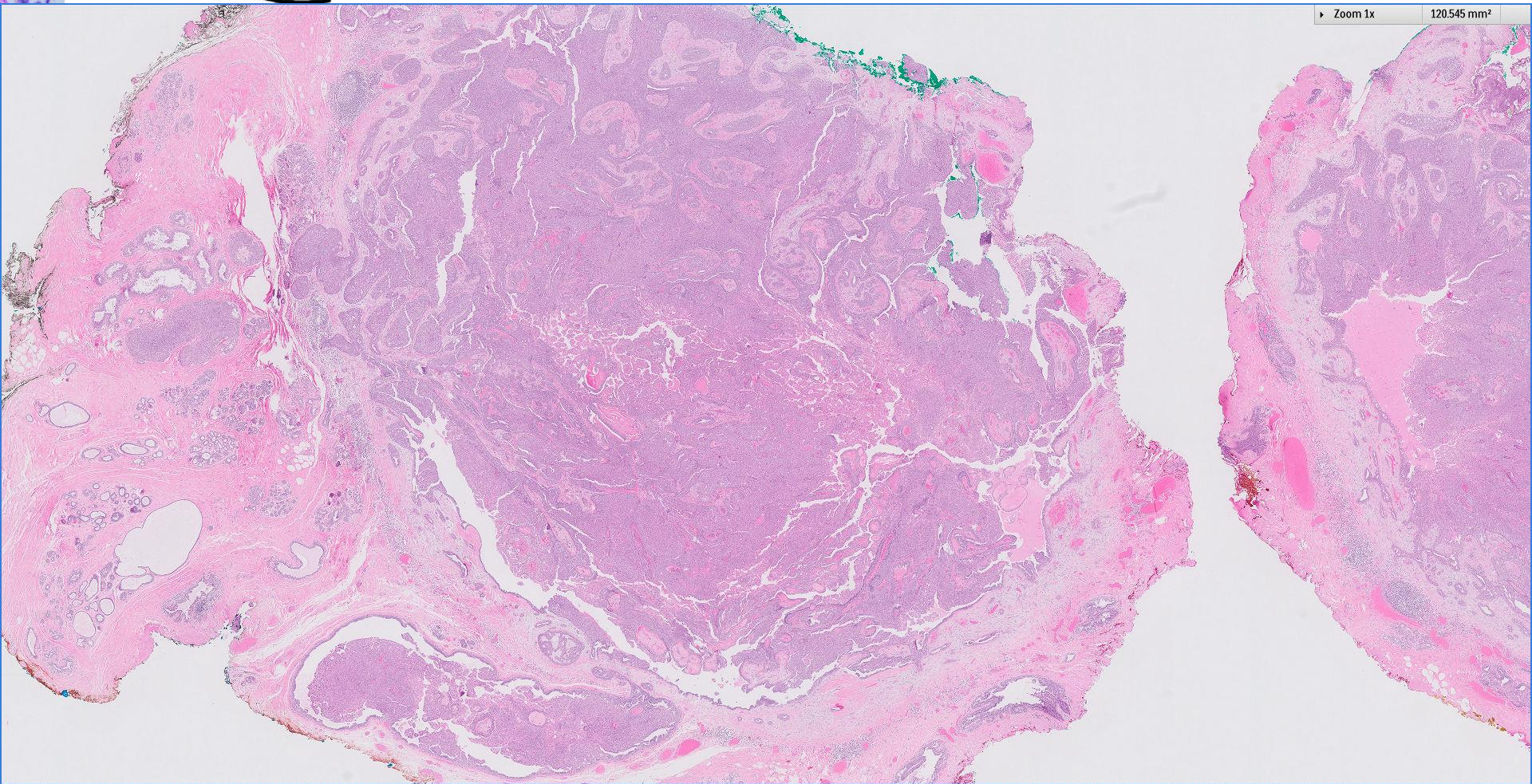


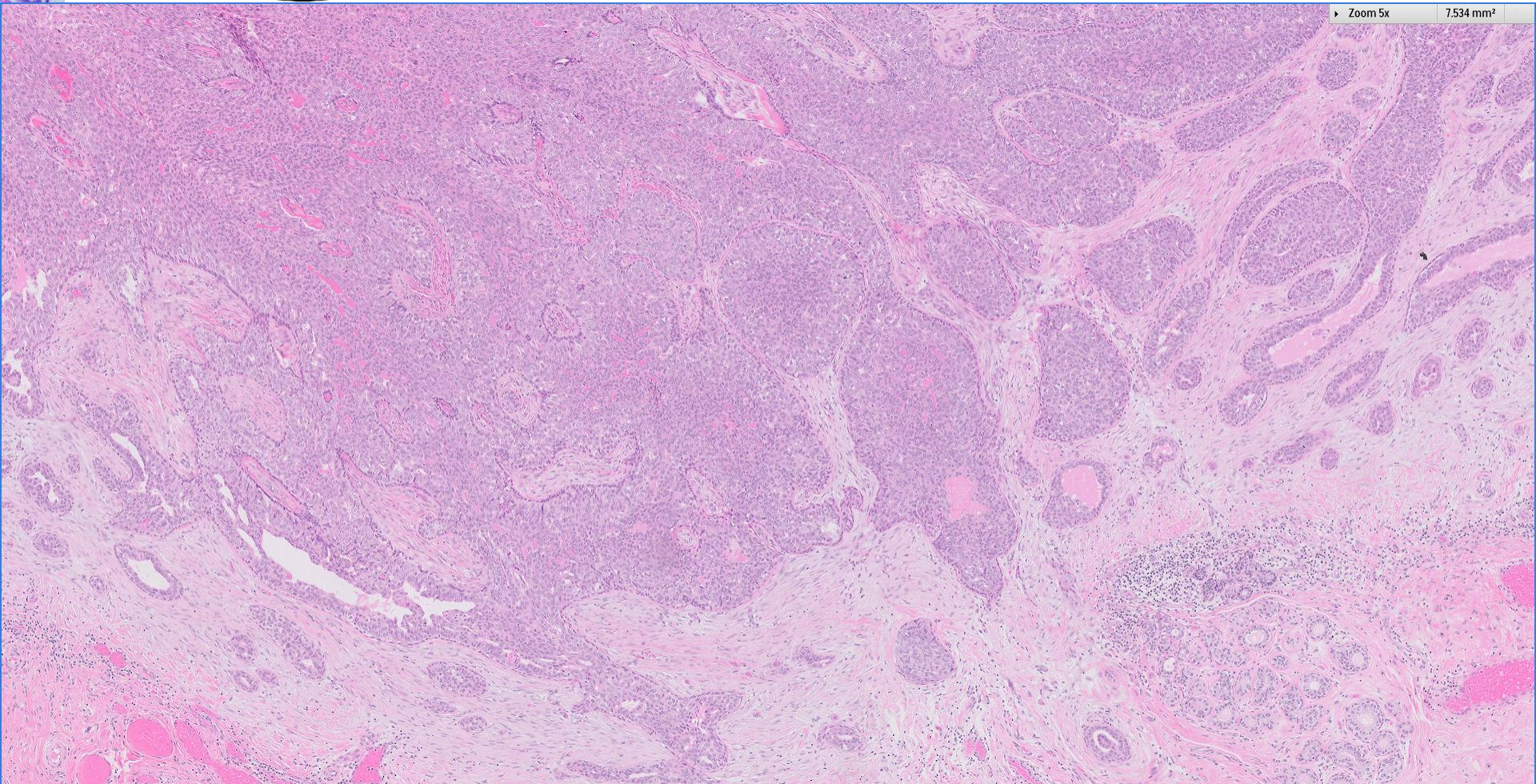






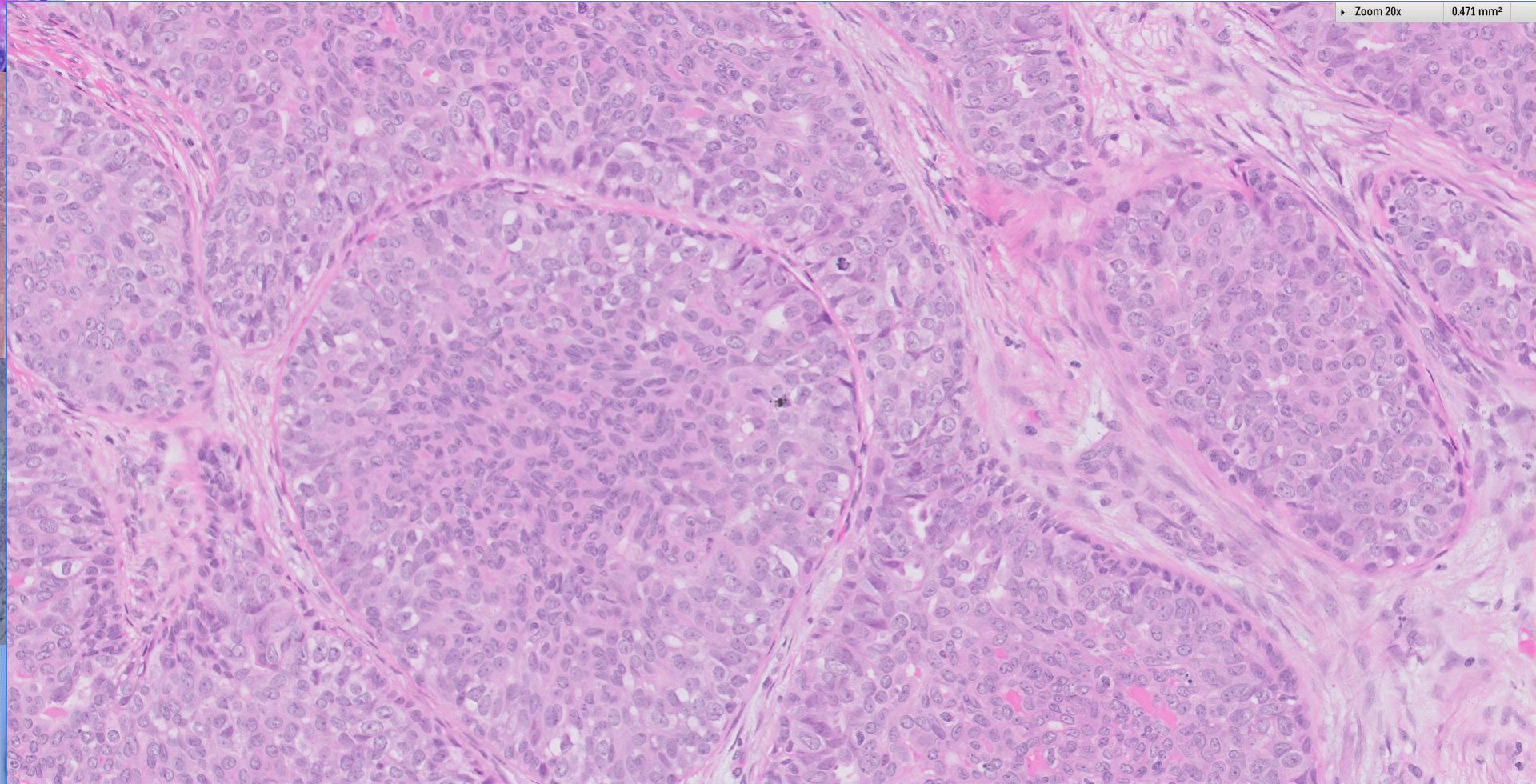
Zoom 1x 120.545 mm<sup>2</sup>





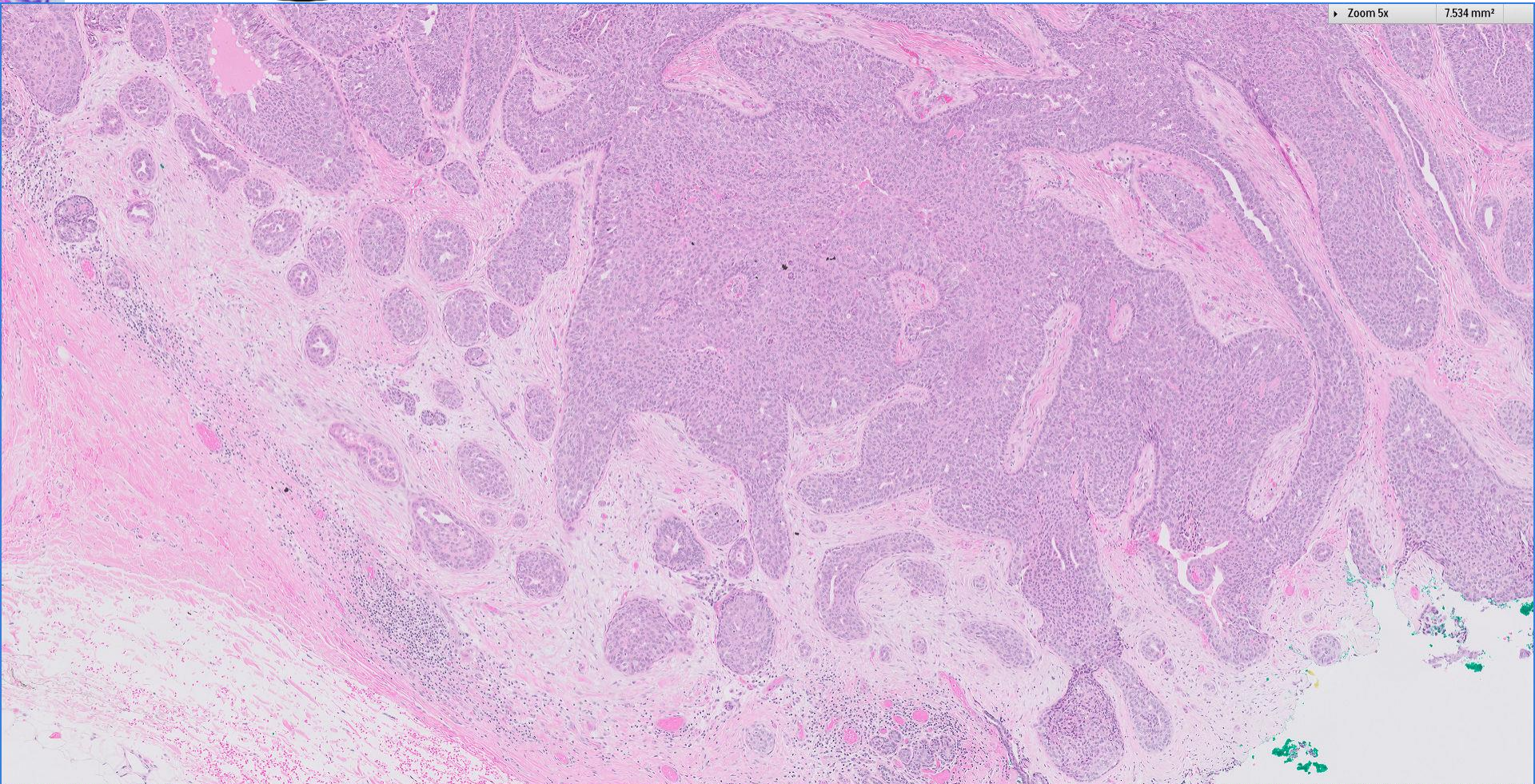


Zoom 20x 0.471 mm<sup>2</sup>



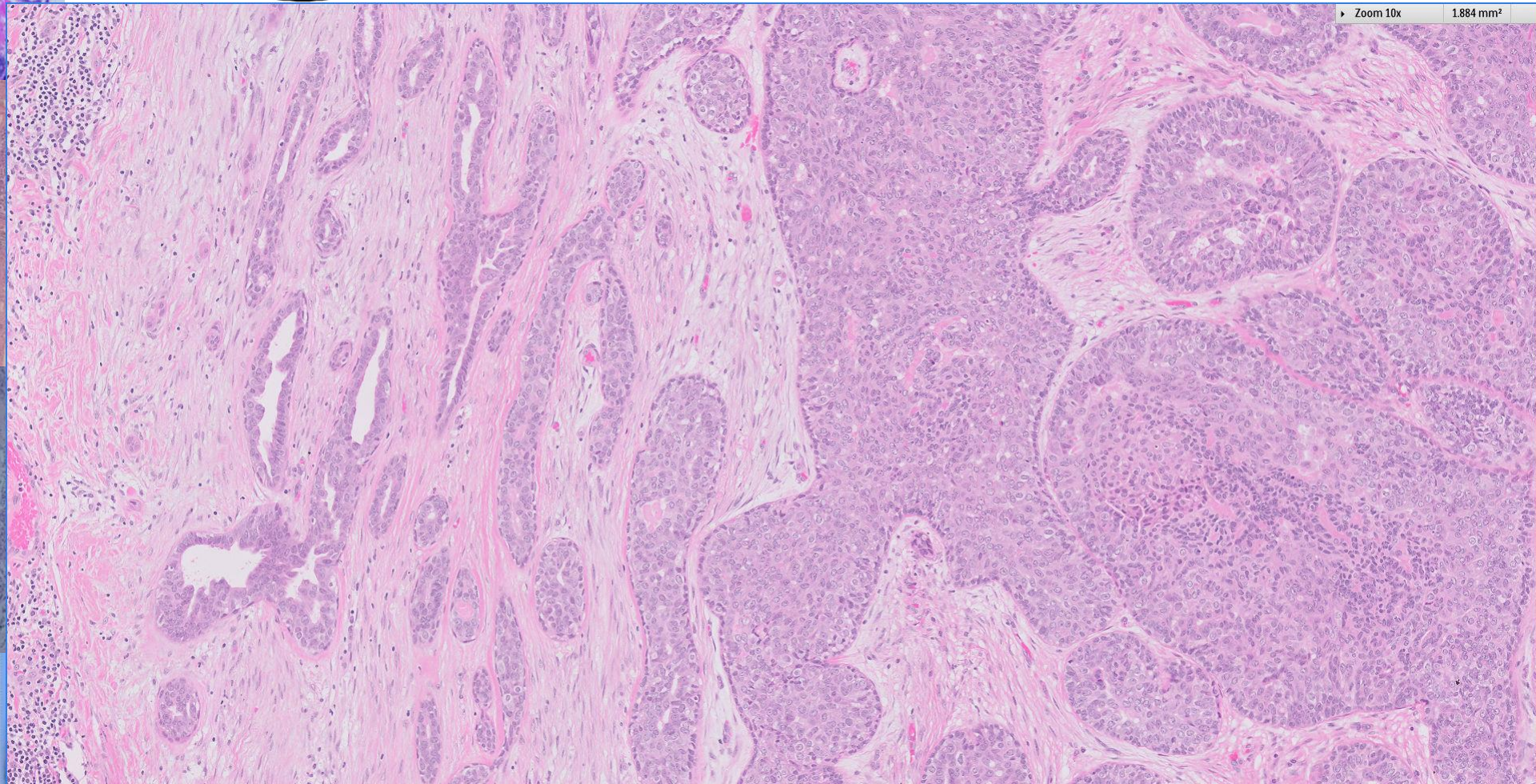


Zoom 5x 7.534 mm<sup>2</sup>

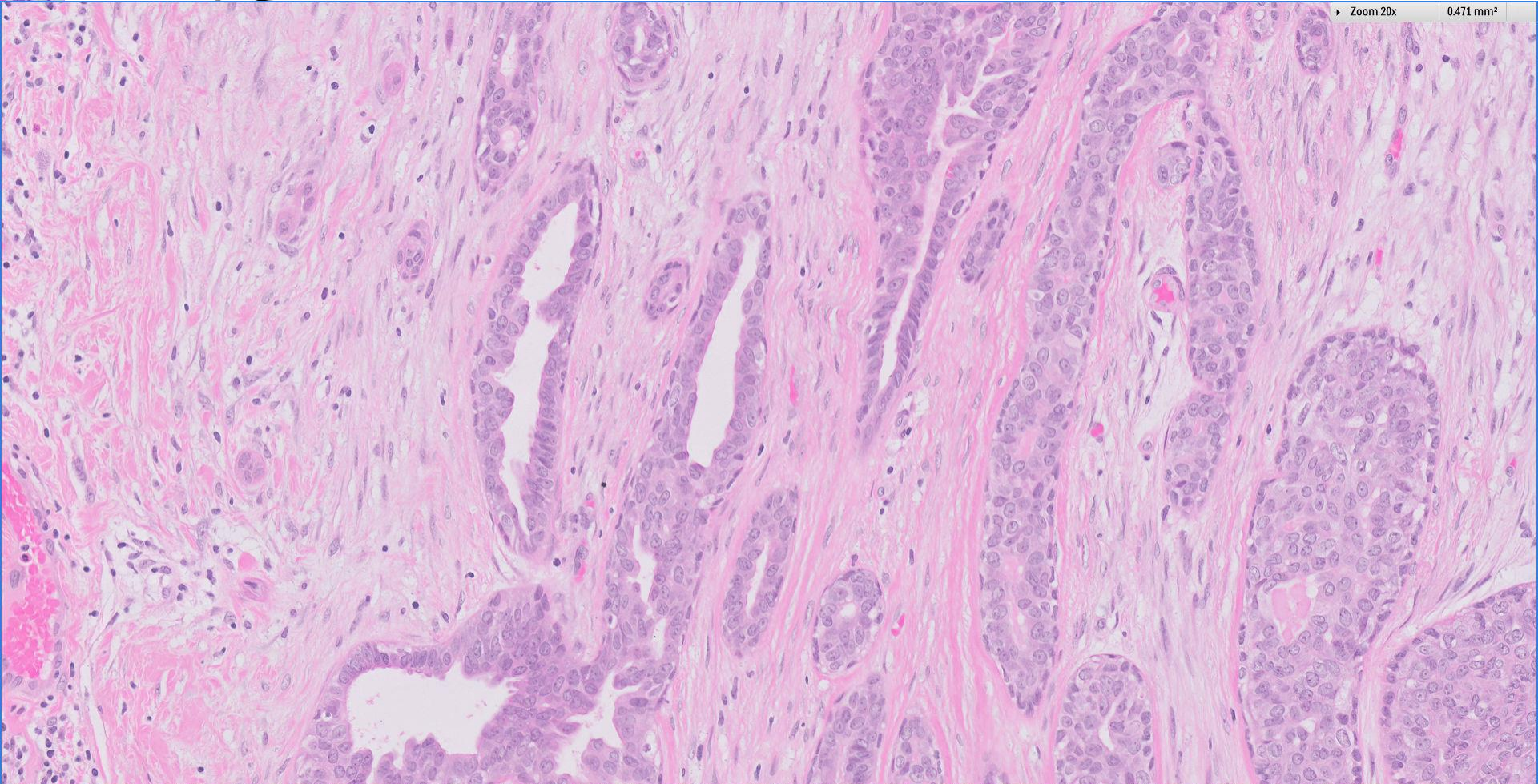


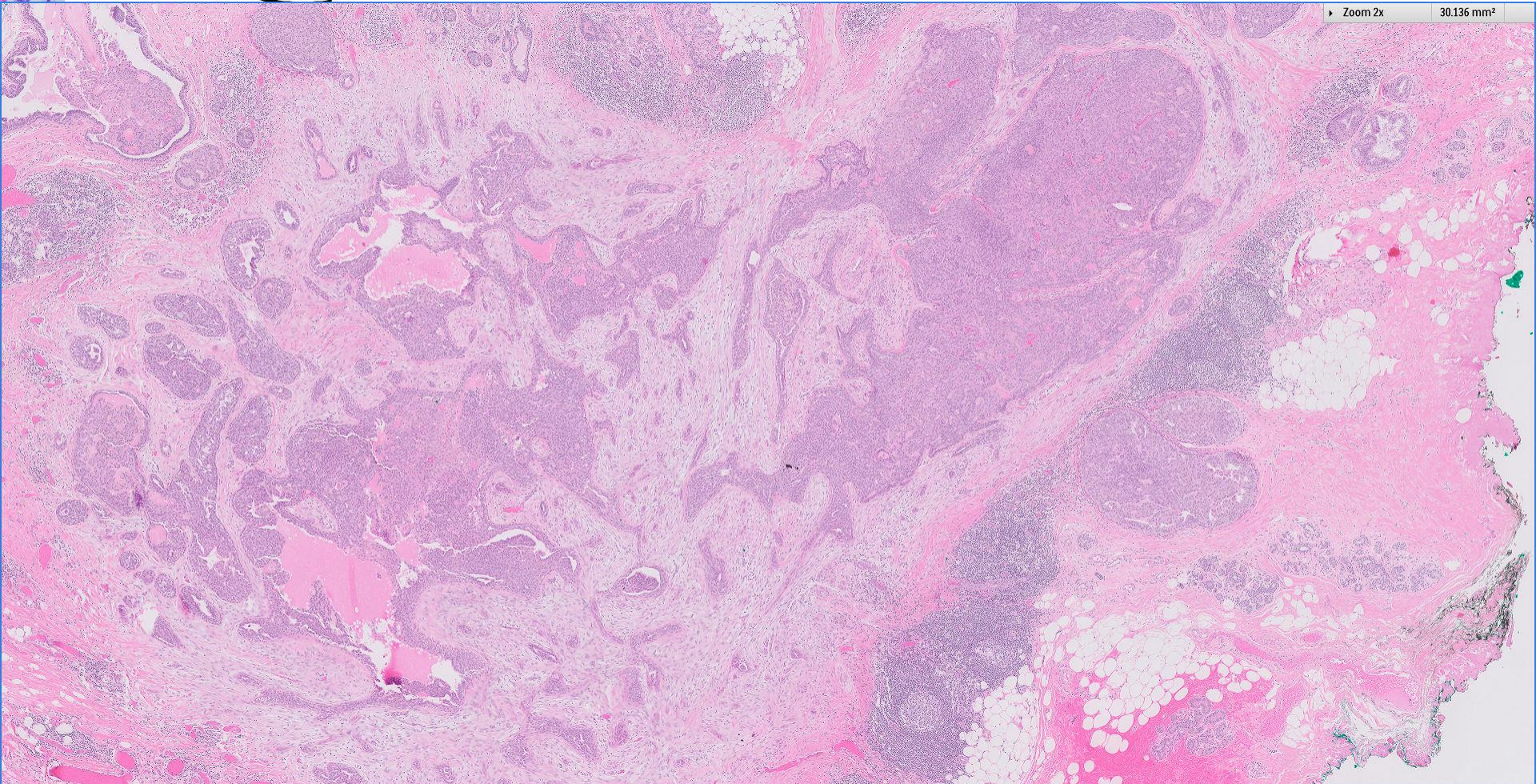


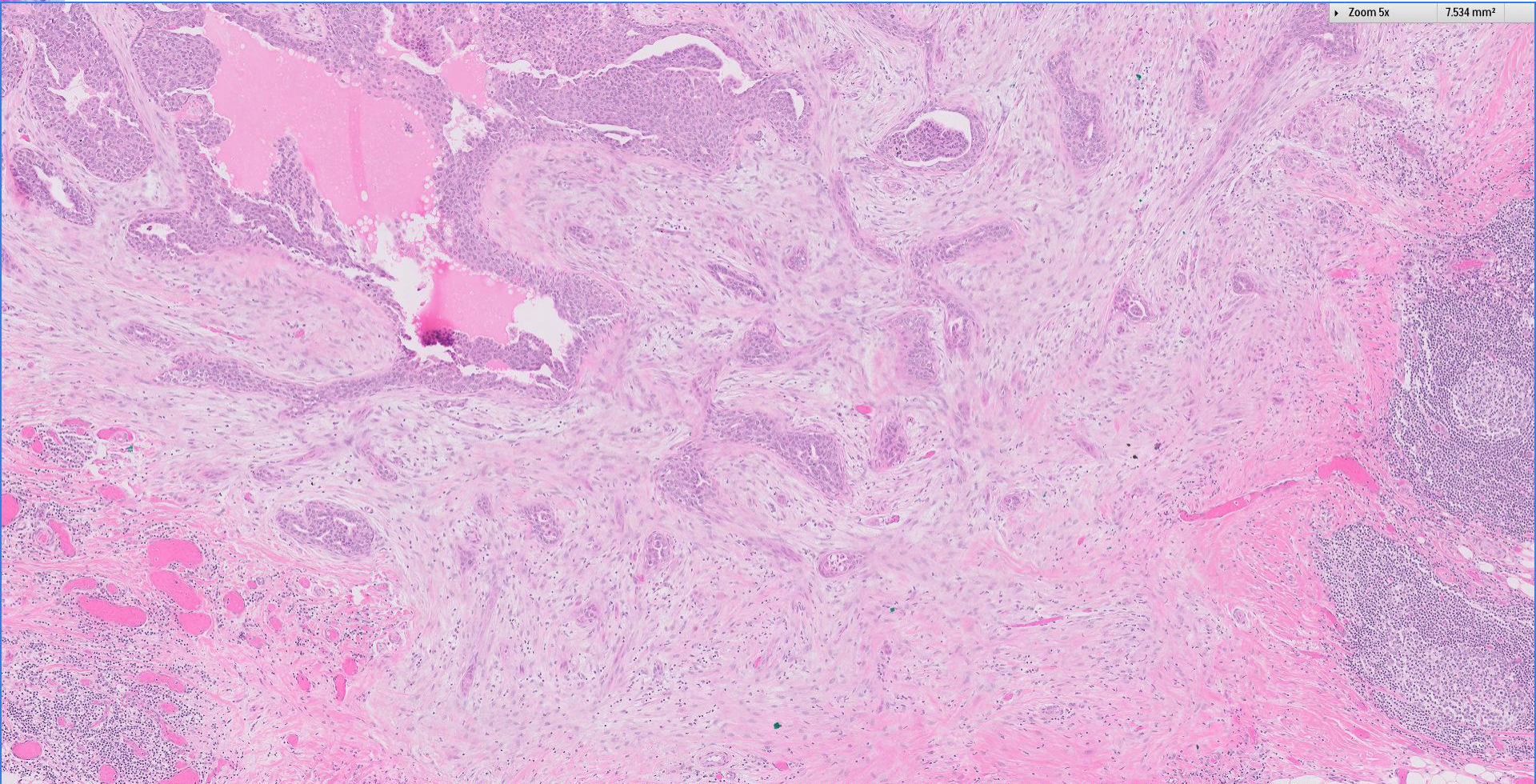
Zoom 10x 1.884 mm<sup>2</sup>

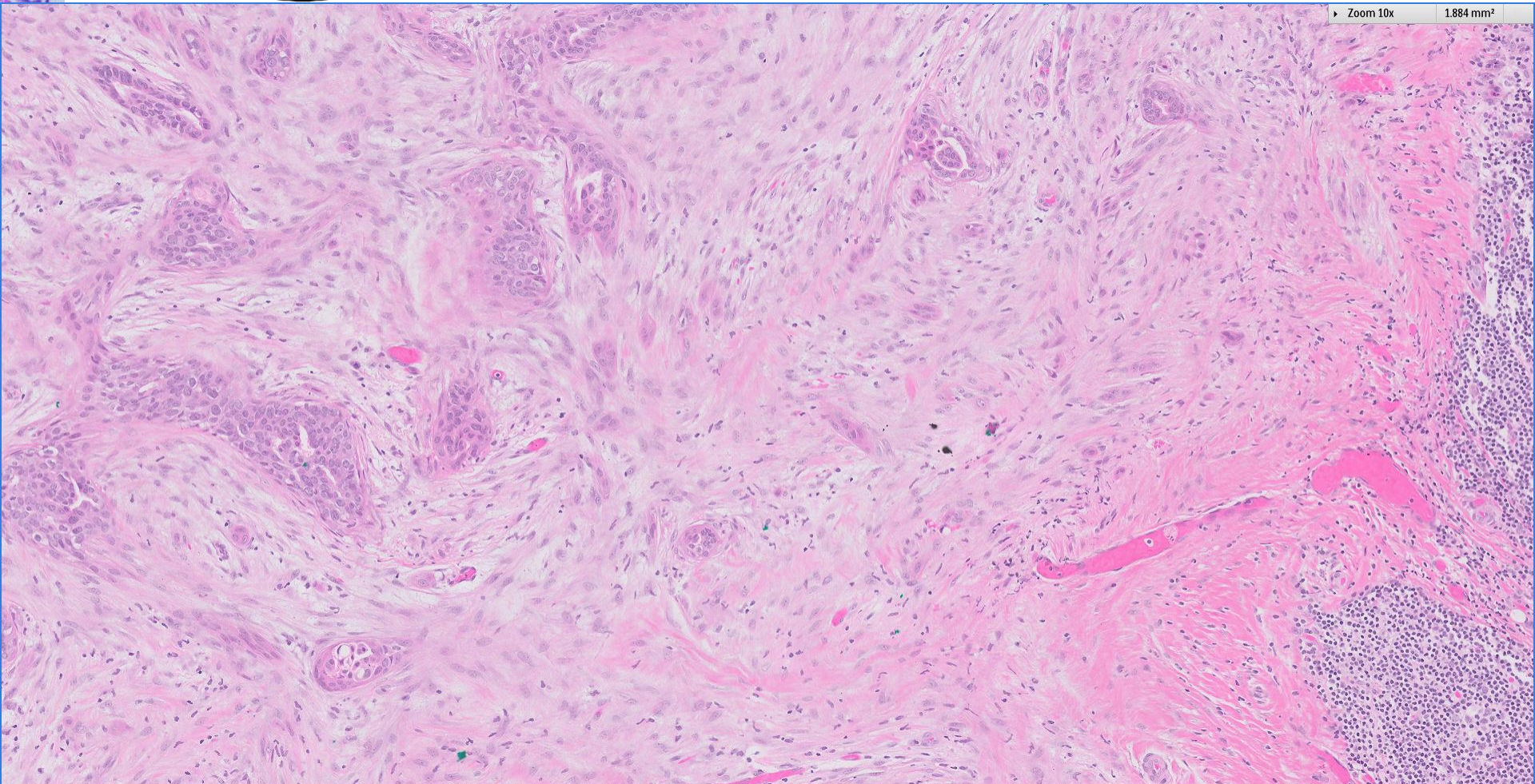


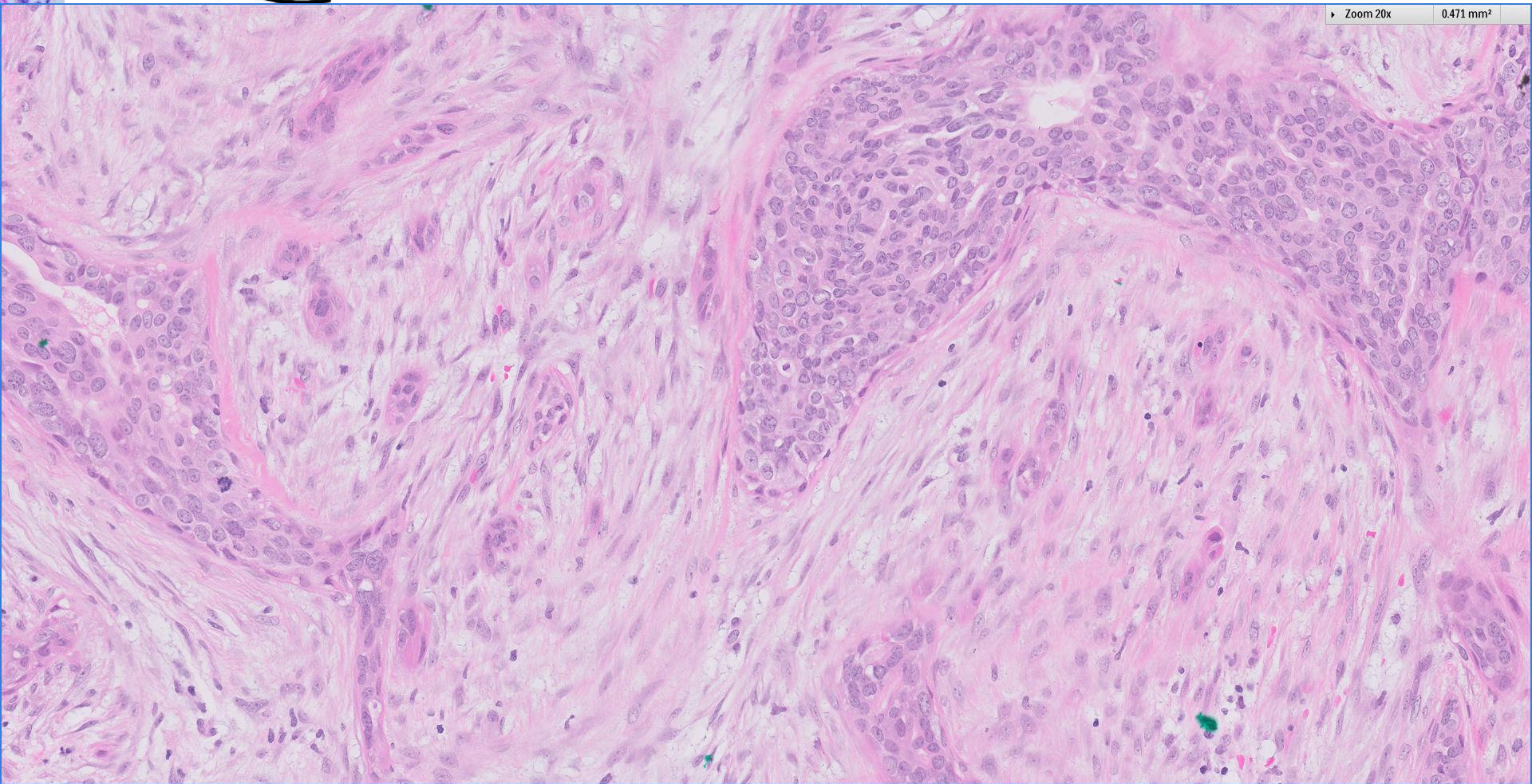












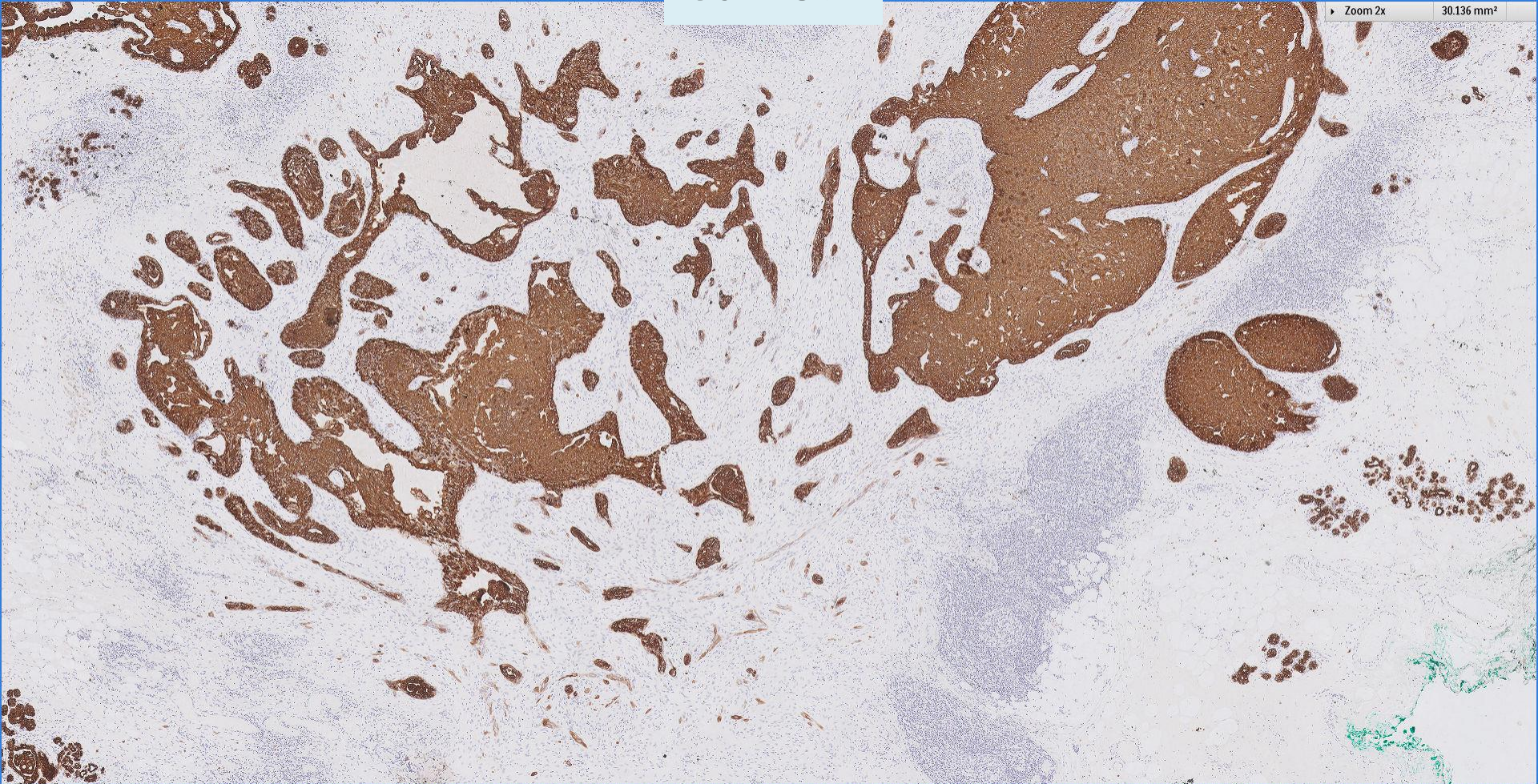


Breast  
Pathology  
Course 2020 @21

# PATHOLOGY

## 118

Cam5.2



Division of Pathology  
Singapore General Hospital

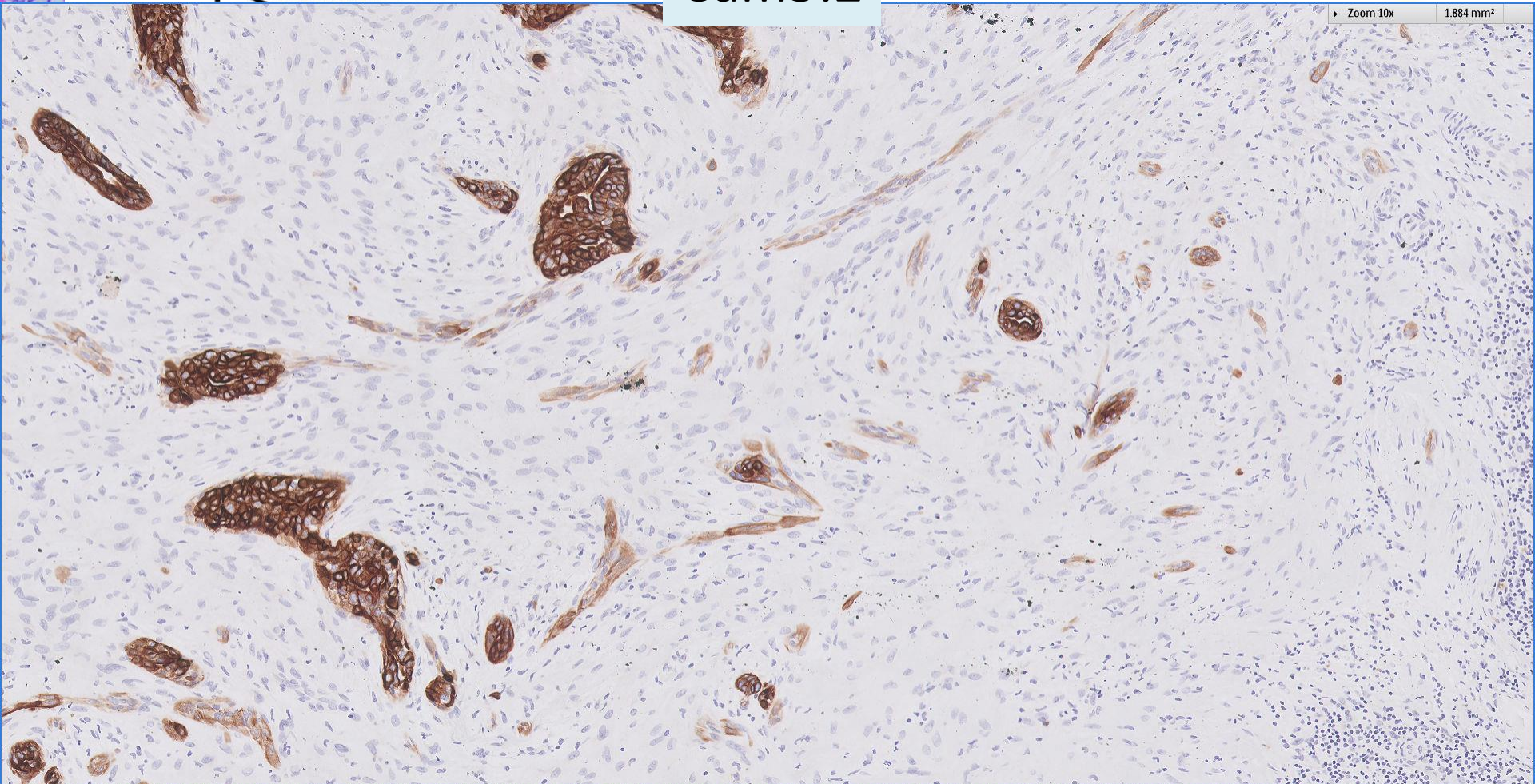
SingHealth DukeNUS  
ACADEMIC MEDICAL CENTRE  
**PATHOLOGY**





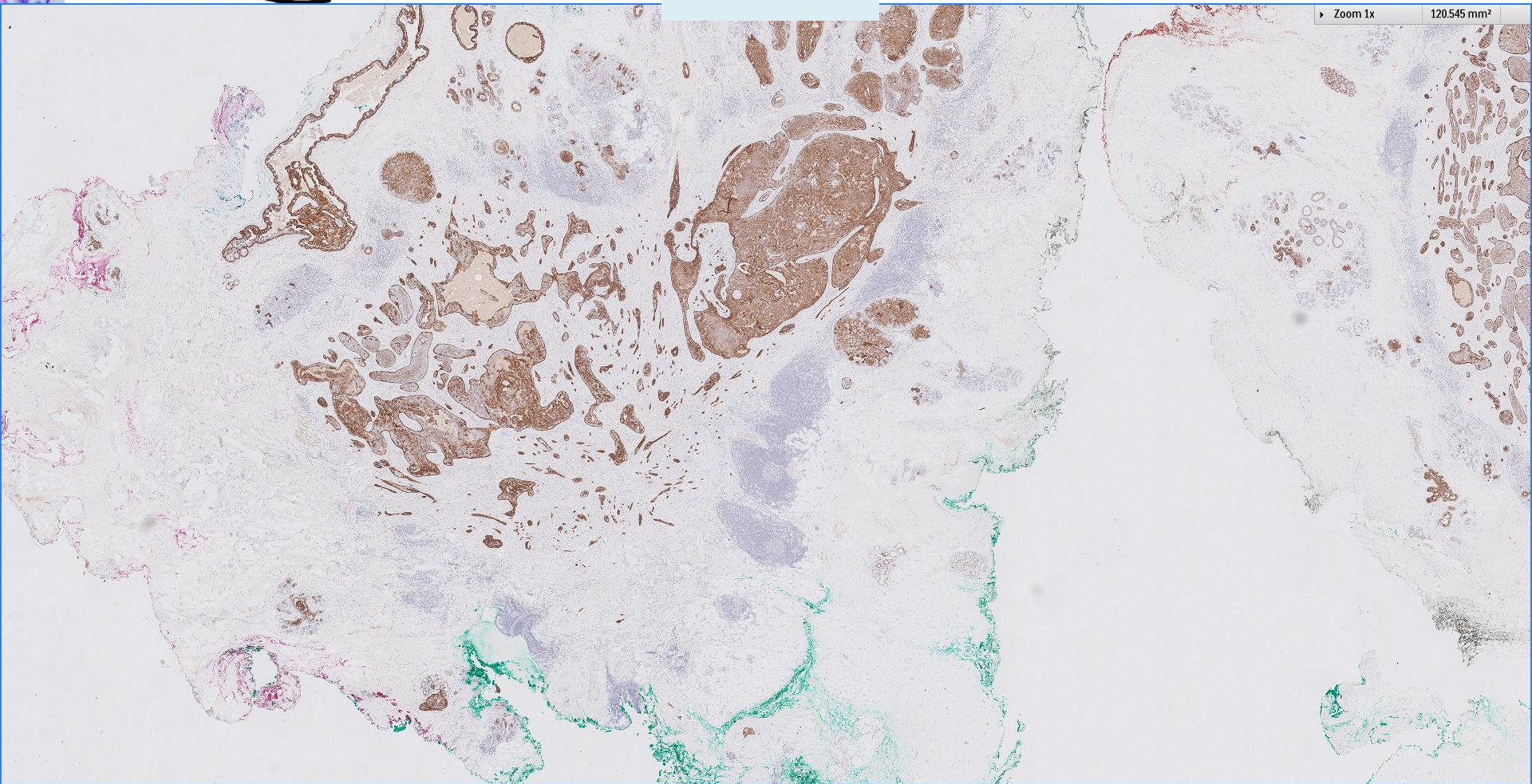
Cam5.2

Zoom 10x 1.884 mm<sup>2</sup>





## CK14



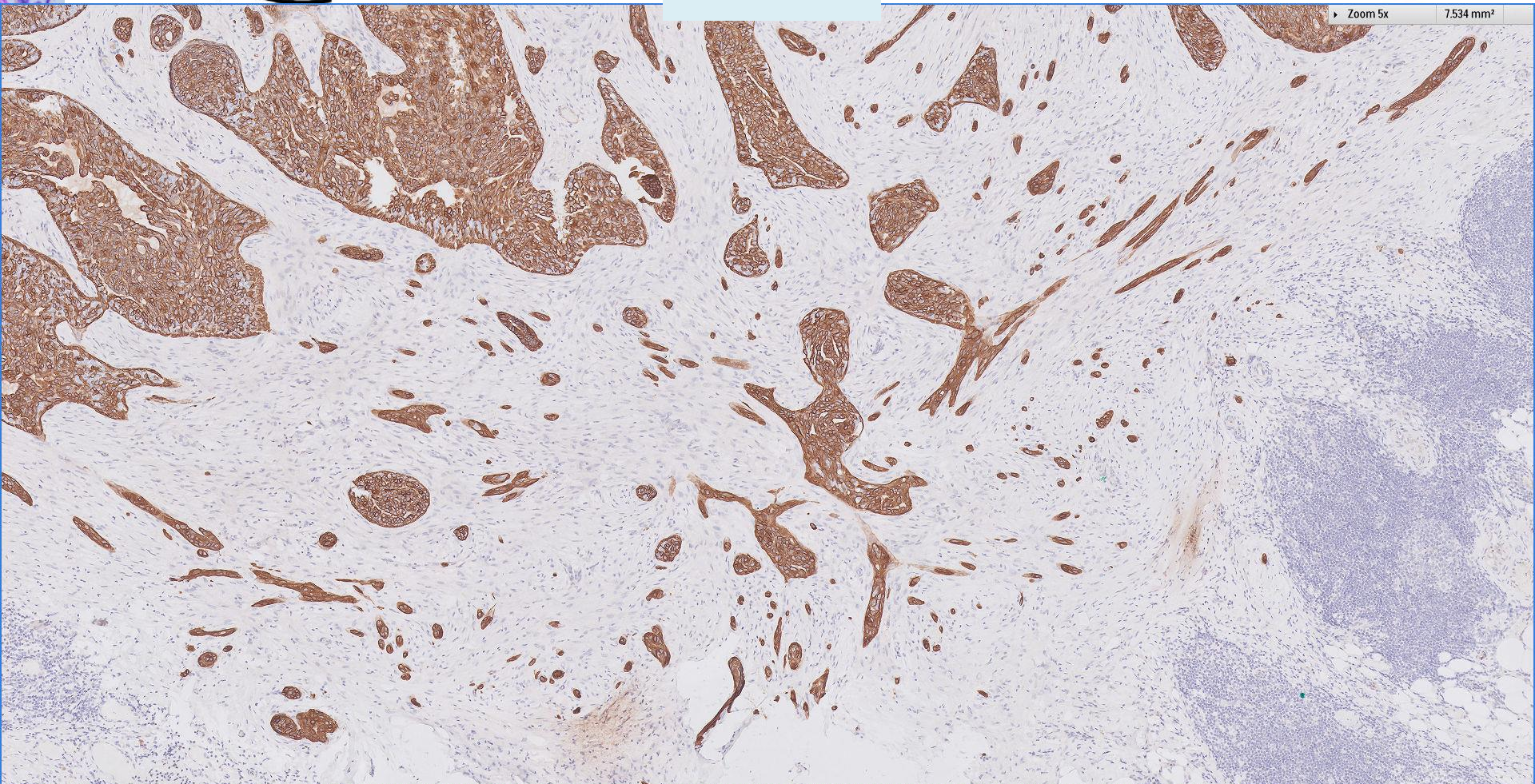
Zoom 1x 120.545 mm<sup>2</sup>







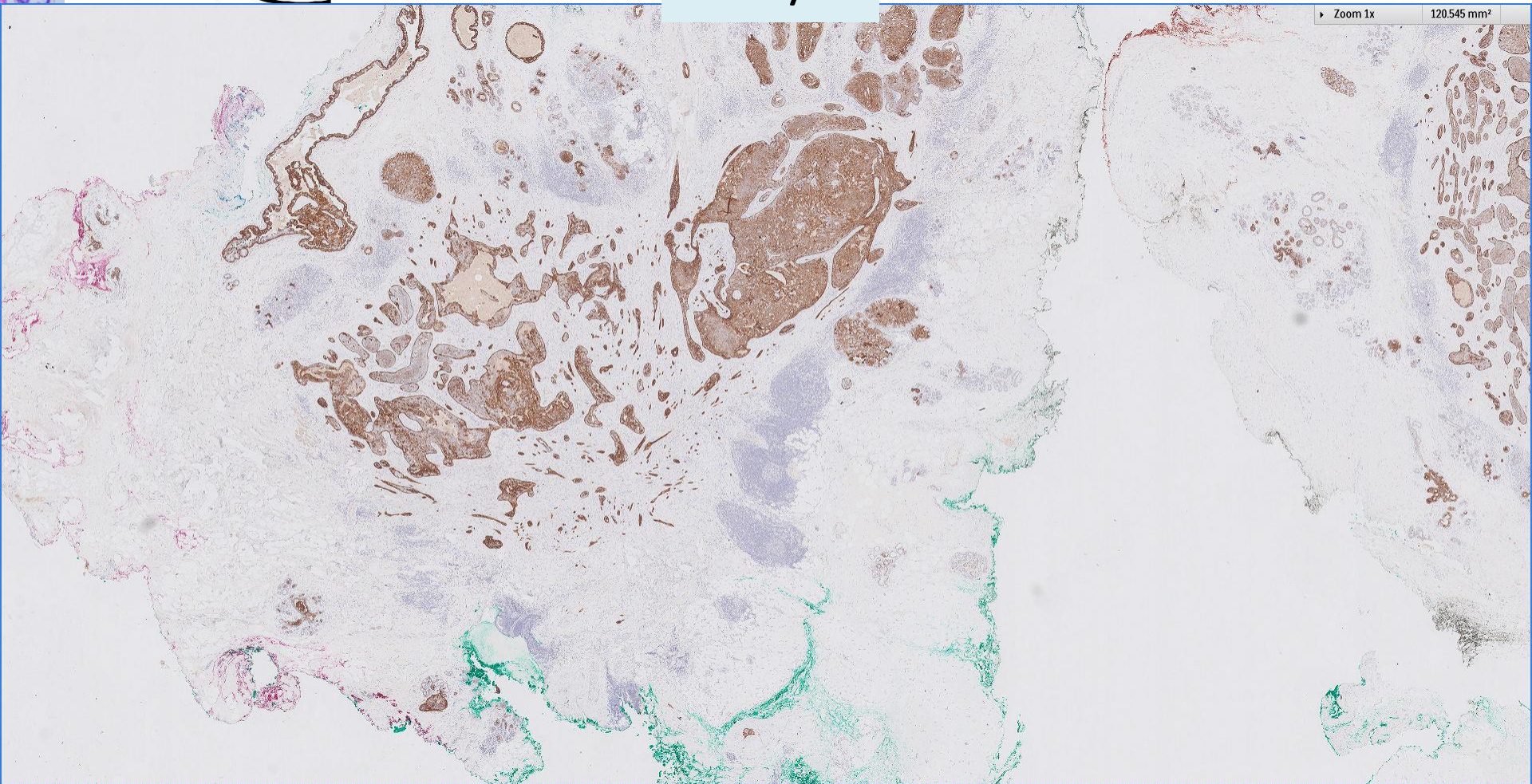
### CK14





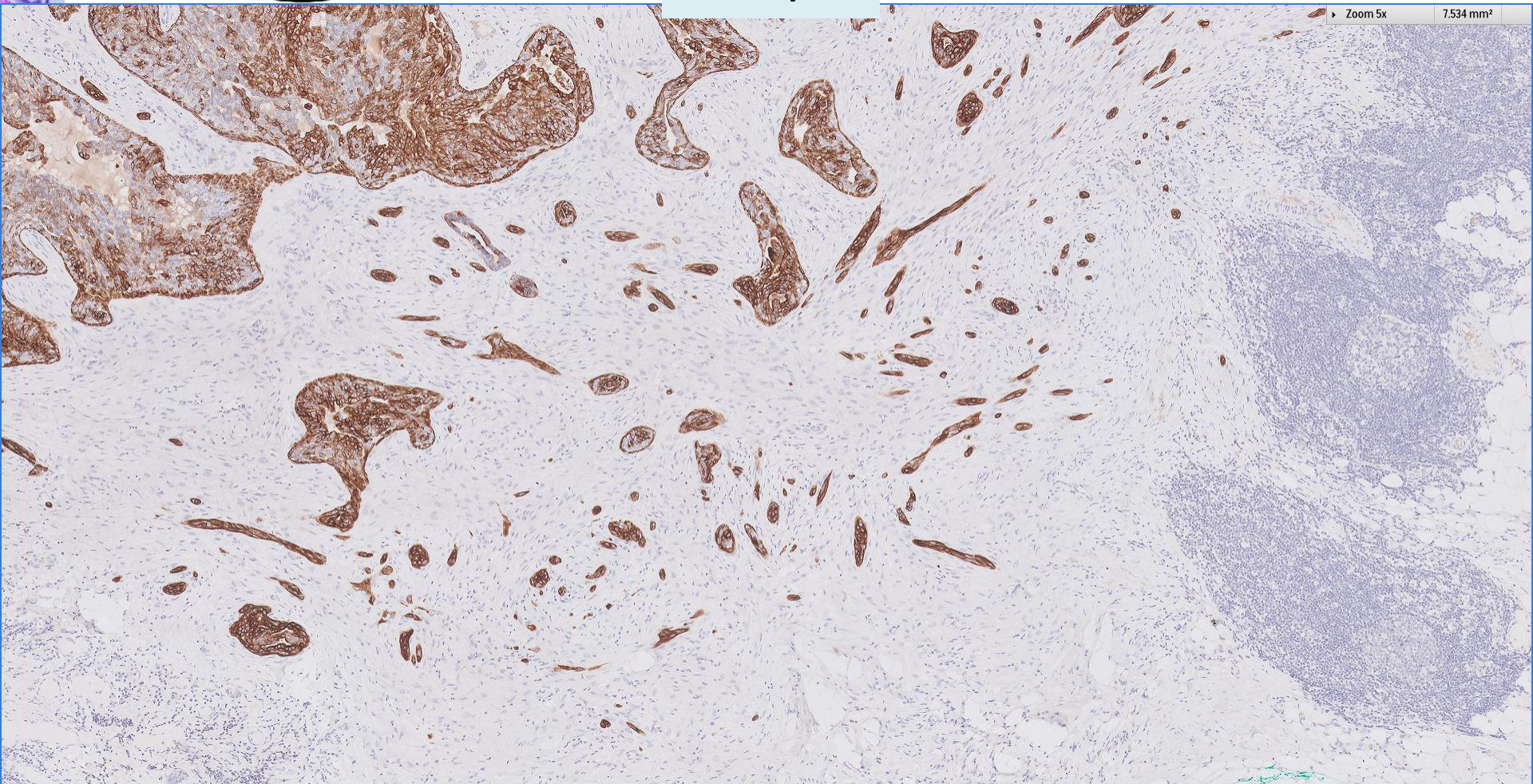
CK5/6

Zoom 1x 120.545 mm<sup>2</sup>





CK5/6





p63

Zoom 2x 30.136 mm<sup>2</sup>





p63

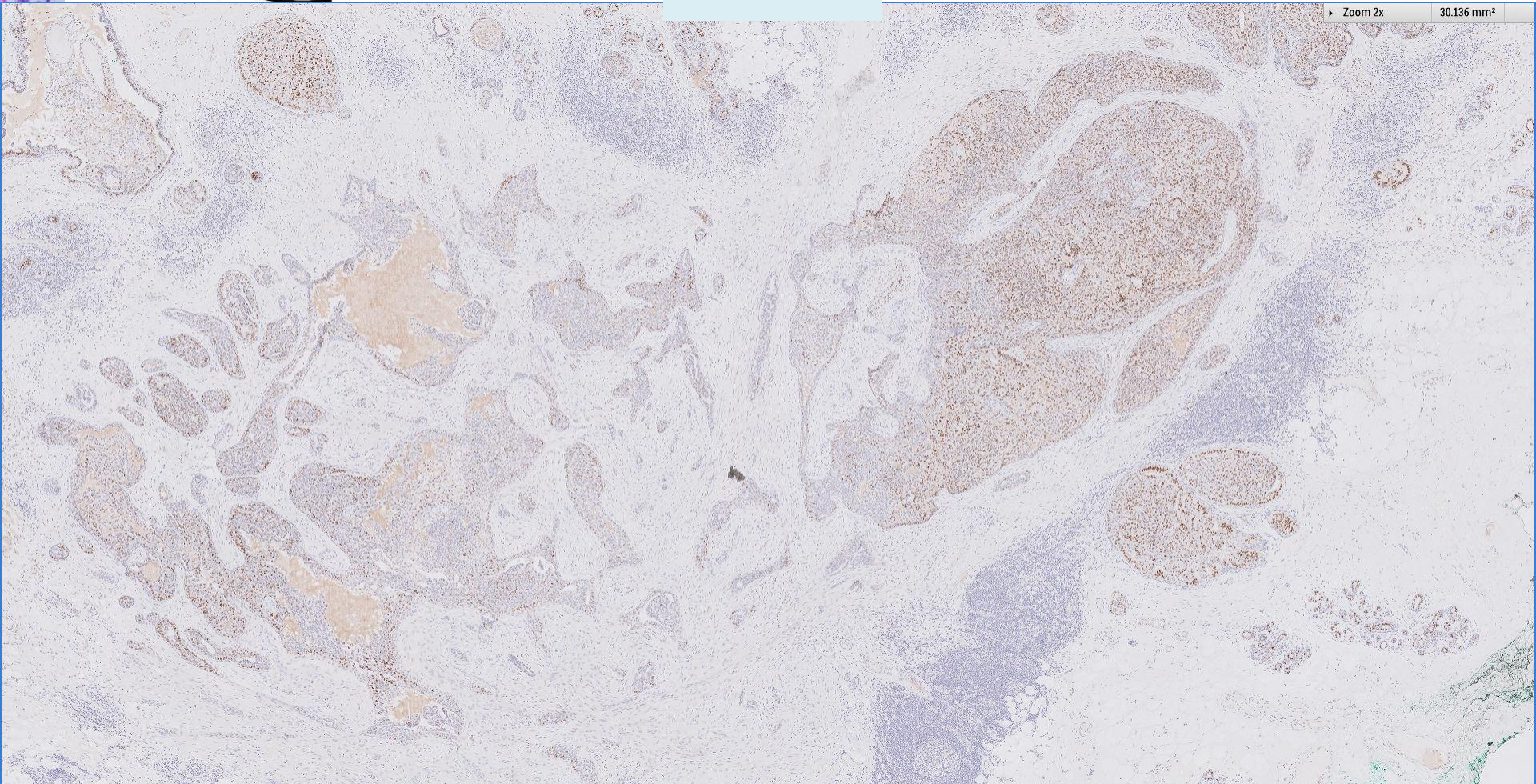
Zoom 5x 7.534 mm<sup>2</sup>





ER

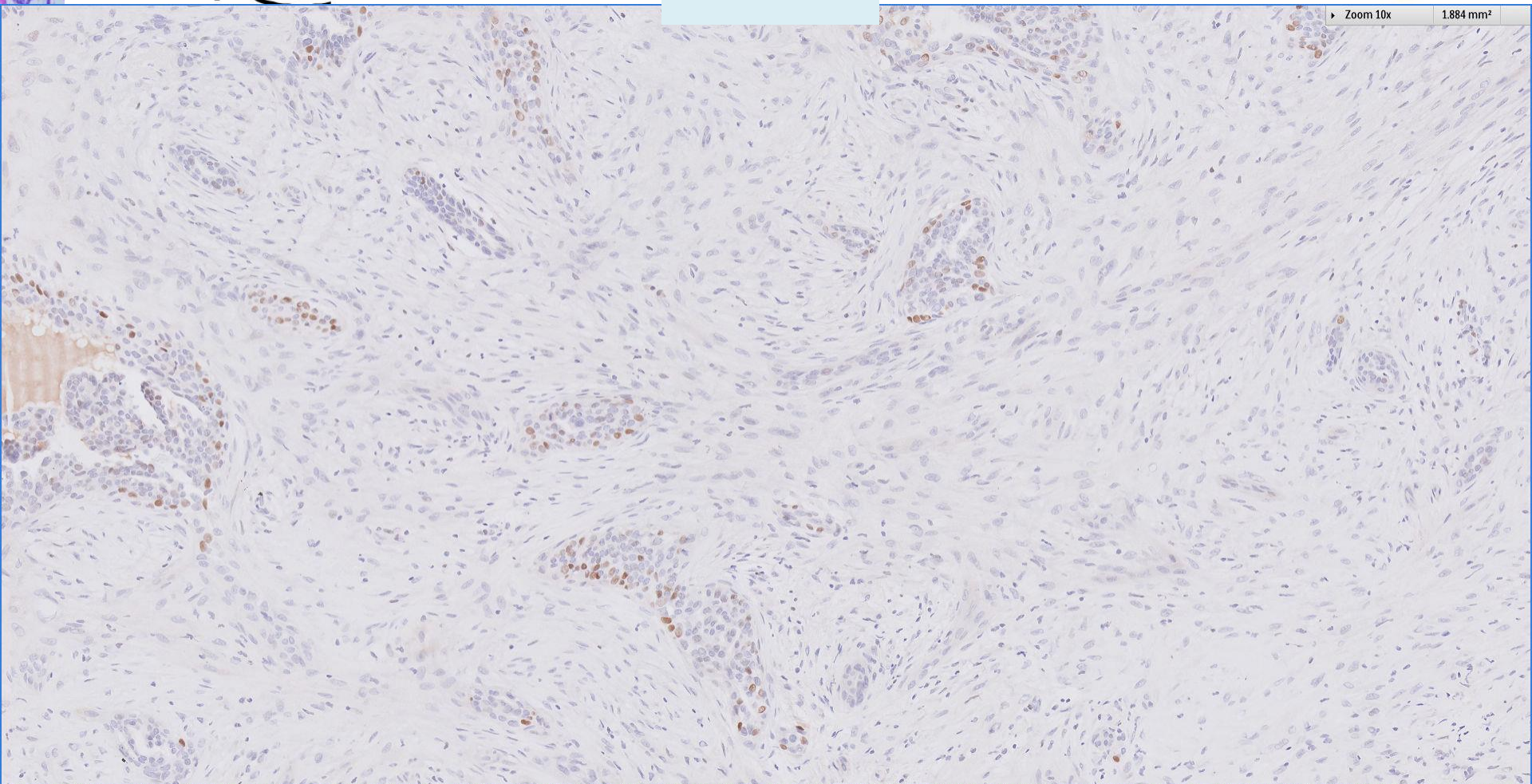
Zoom 2x 30.136 mm<sup>2</sup>





ER

Zoom 10x 1.884 mm<sup>2</sup>



## Diagnosis

*Left breast retroareolar nodule, excision:*  
**Intraductal papilloma with florid UDH**

*(An associated adenosquamoid proliferation limited to within and the immediate periphery of the IP is present, appearances unusual though benignity is favoured, suggest continued follow-up.)*





## Squamoid nests in the breast

### Benign:

- Radial sclerosing lesions
- Fibrocystic changes
- Fibroepithelial lesions
- Intraductal papillomas
- Fibrous scars & epithelial displacement

### Locally infiltrative:

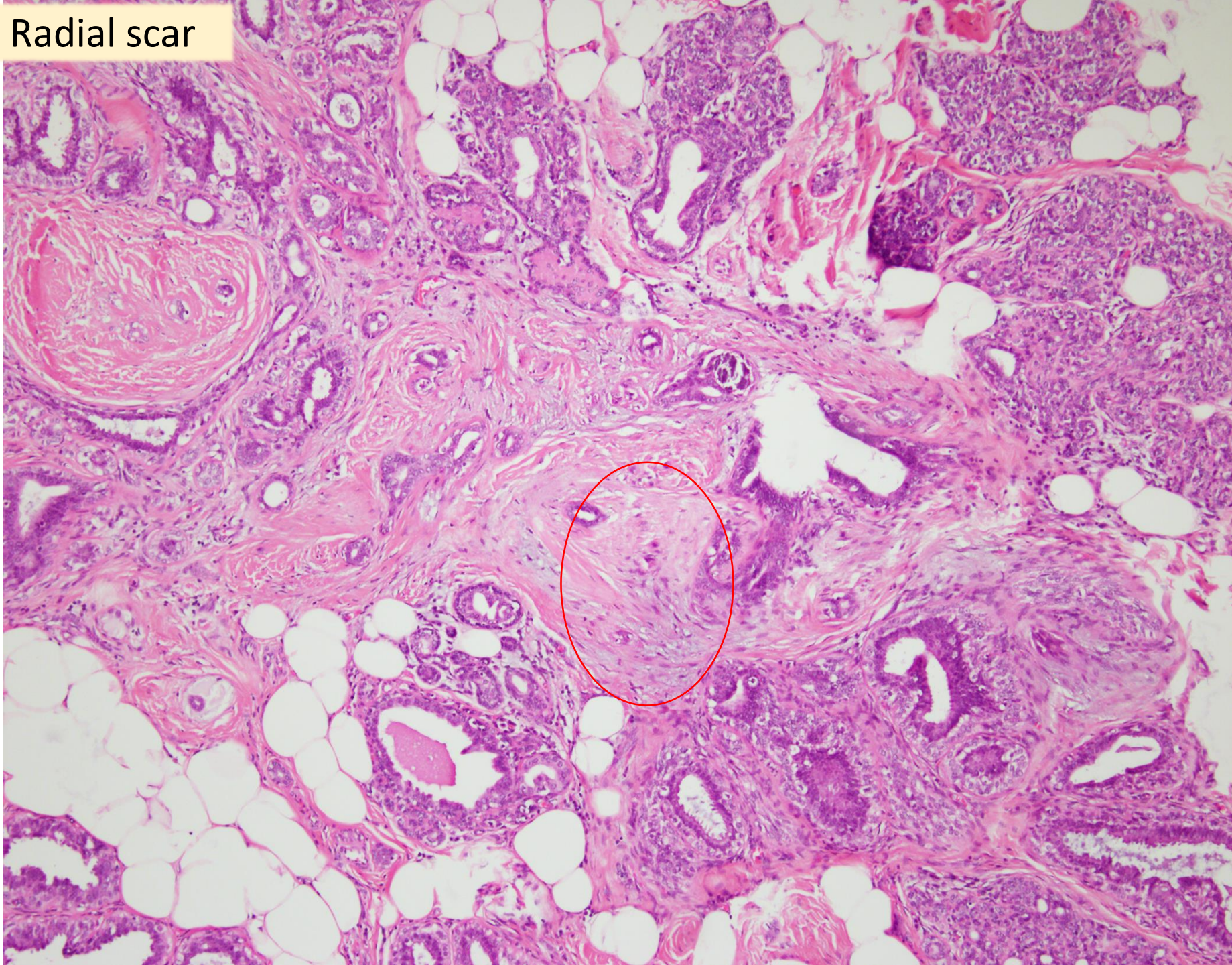
- Syringomatous tumour

### Malignant:

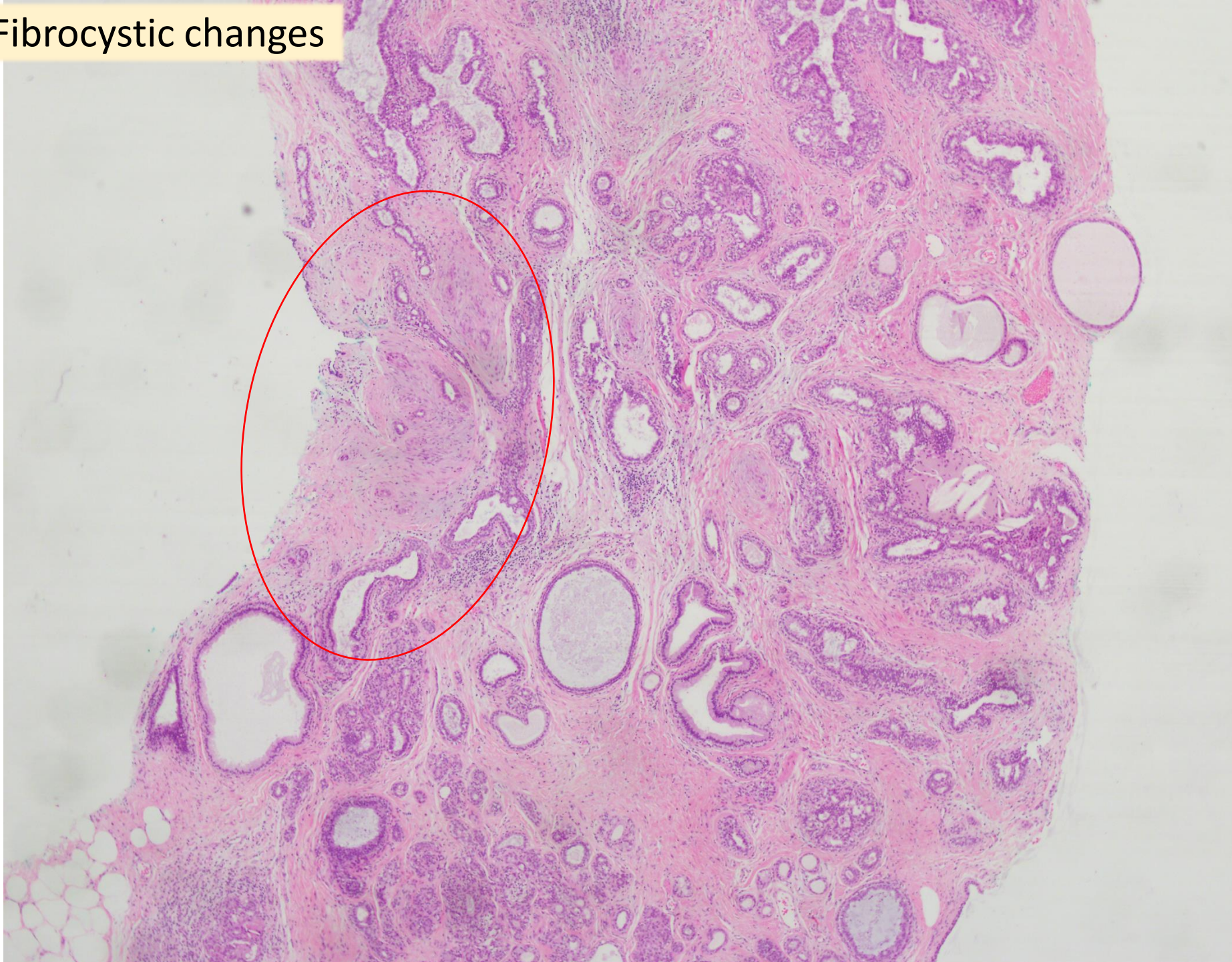
- Low grade adenosquamous cancer



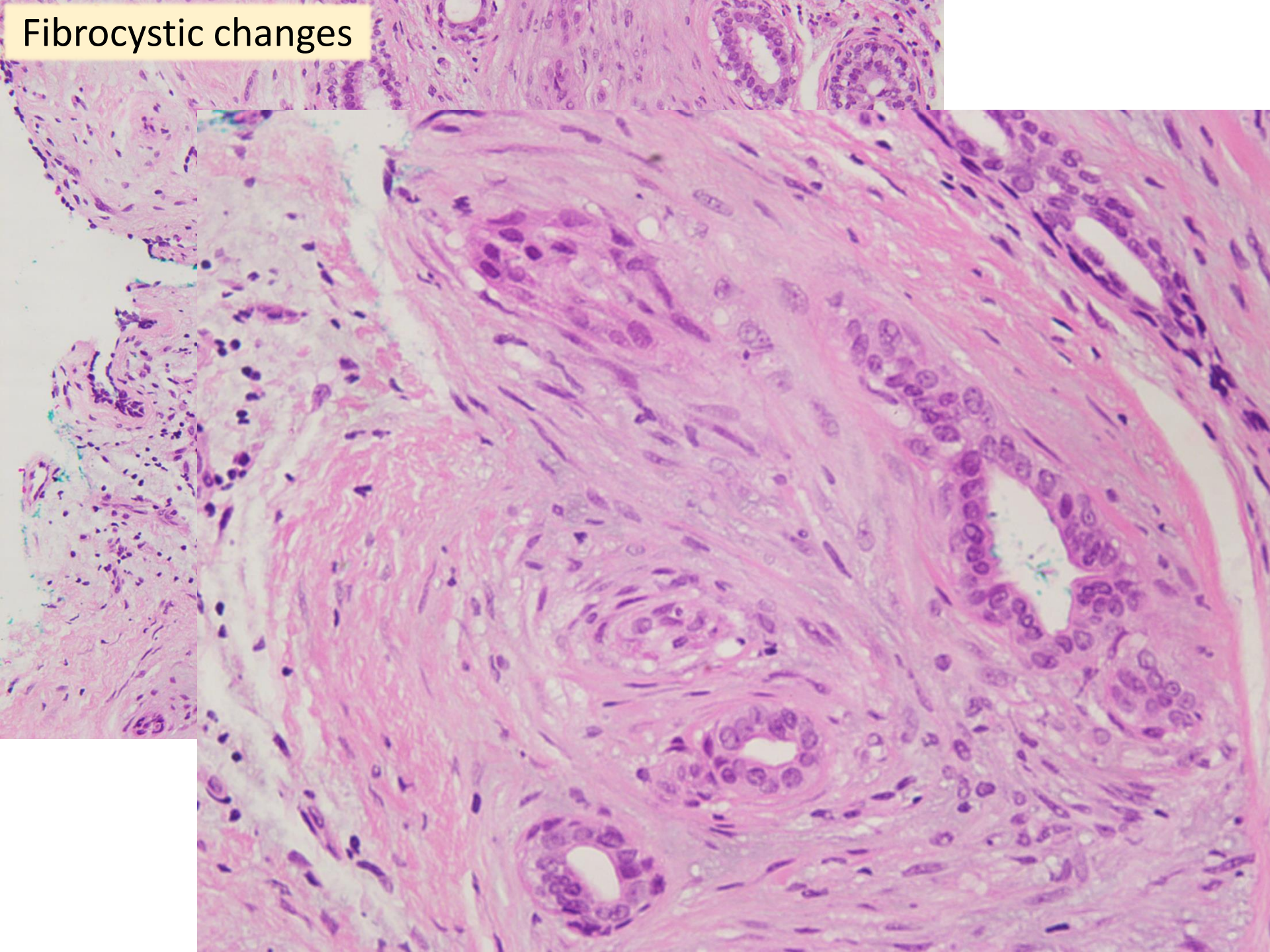
Radial scar



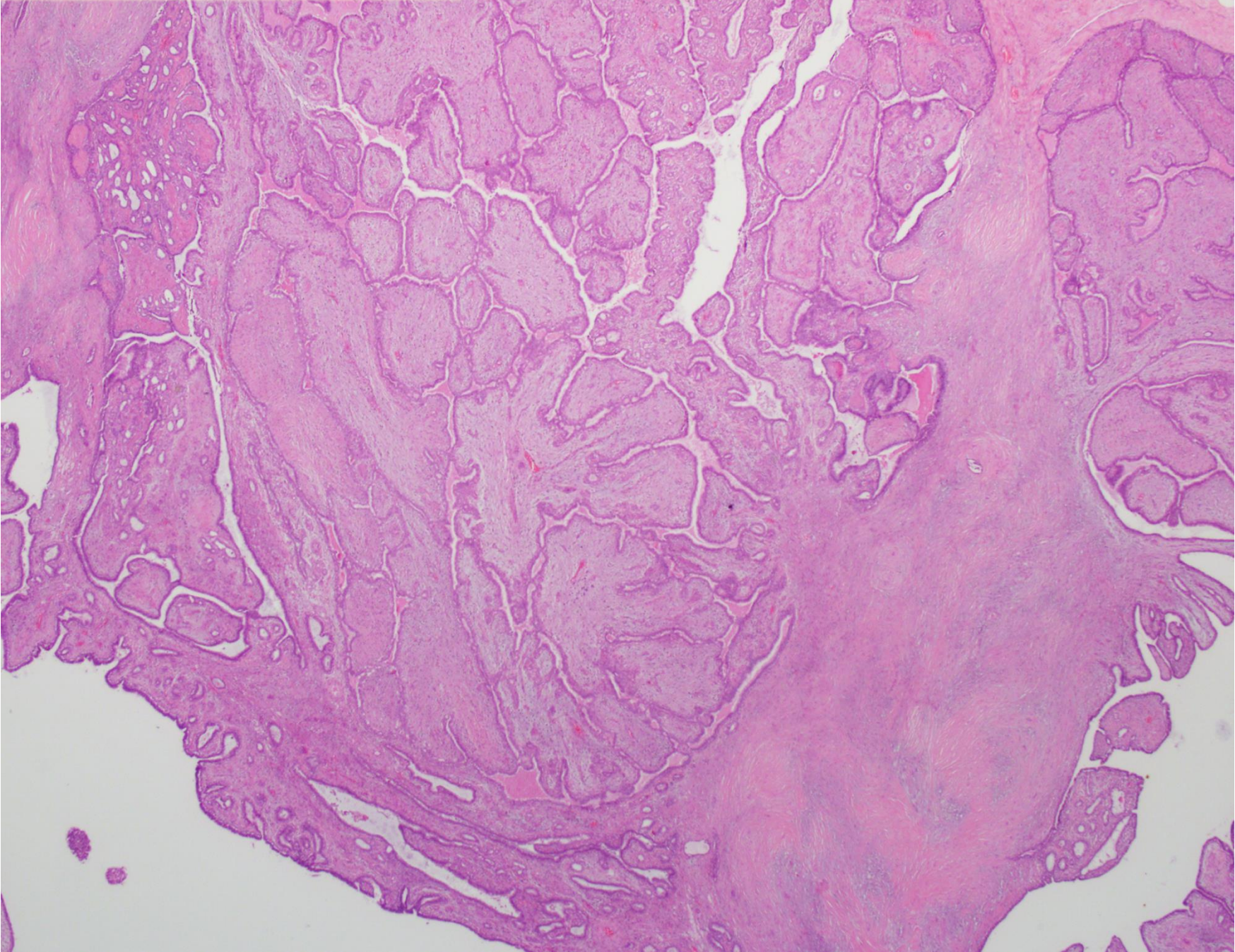
Fibrocystic changes



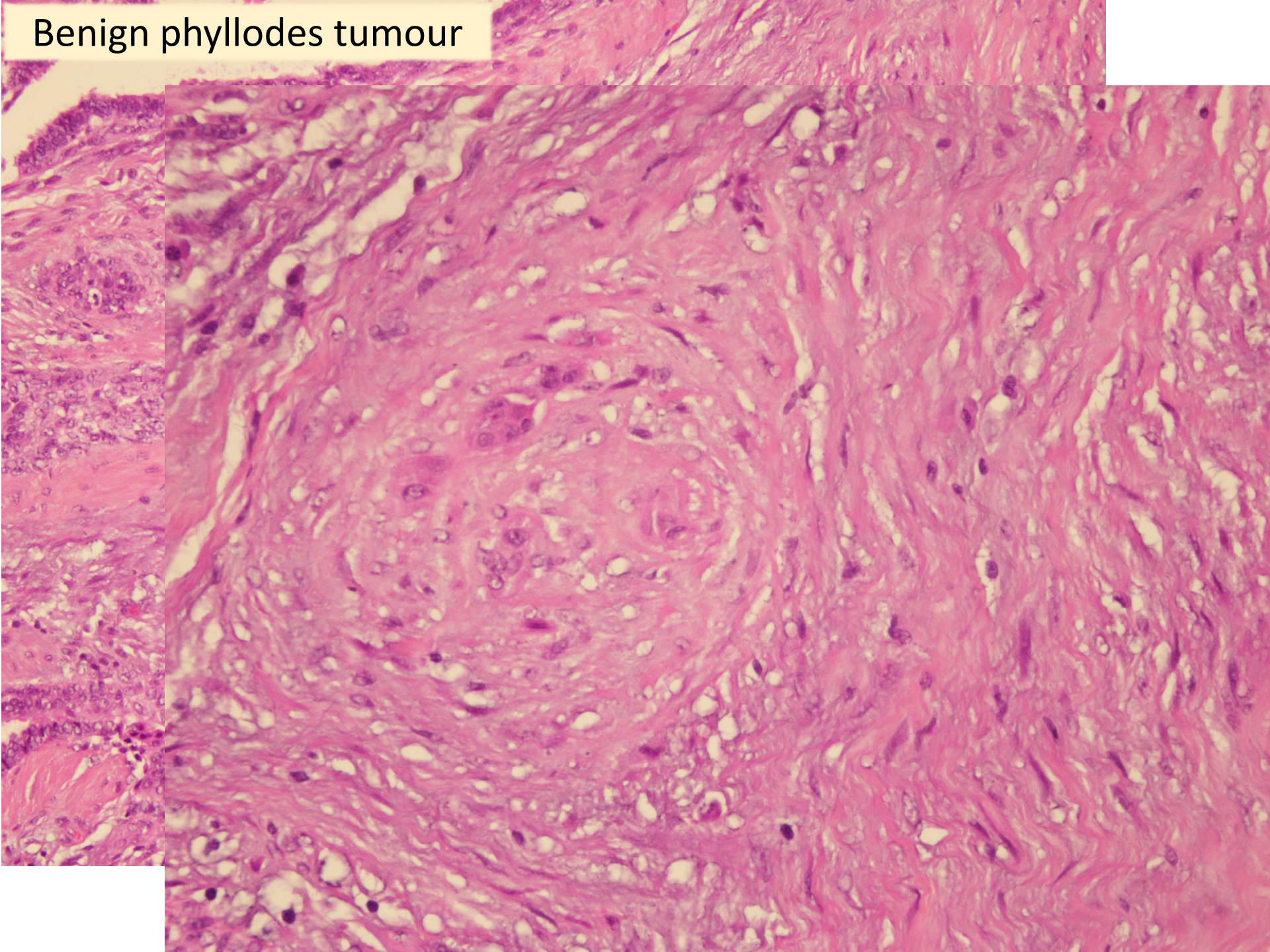
# Fibrocystic changes



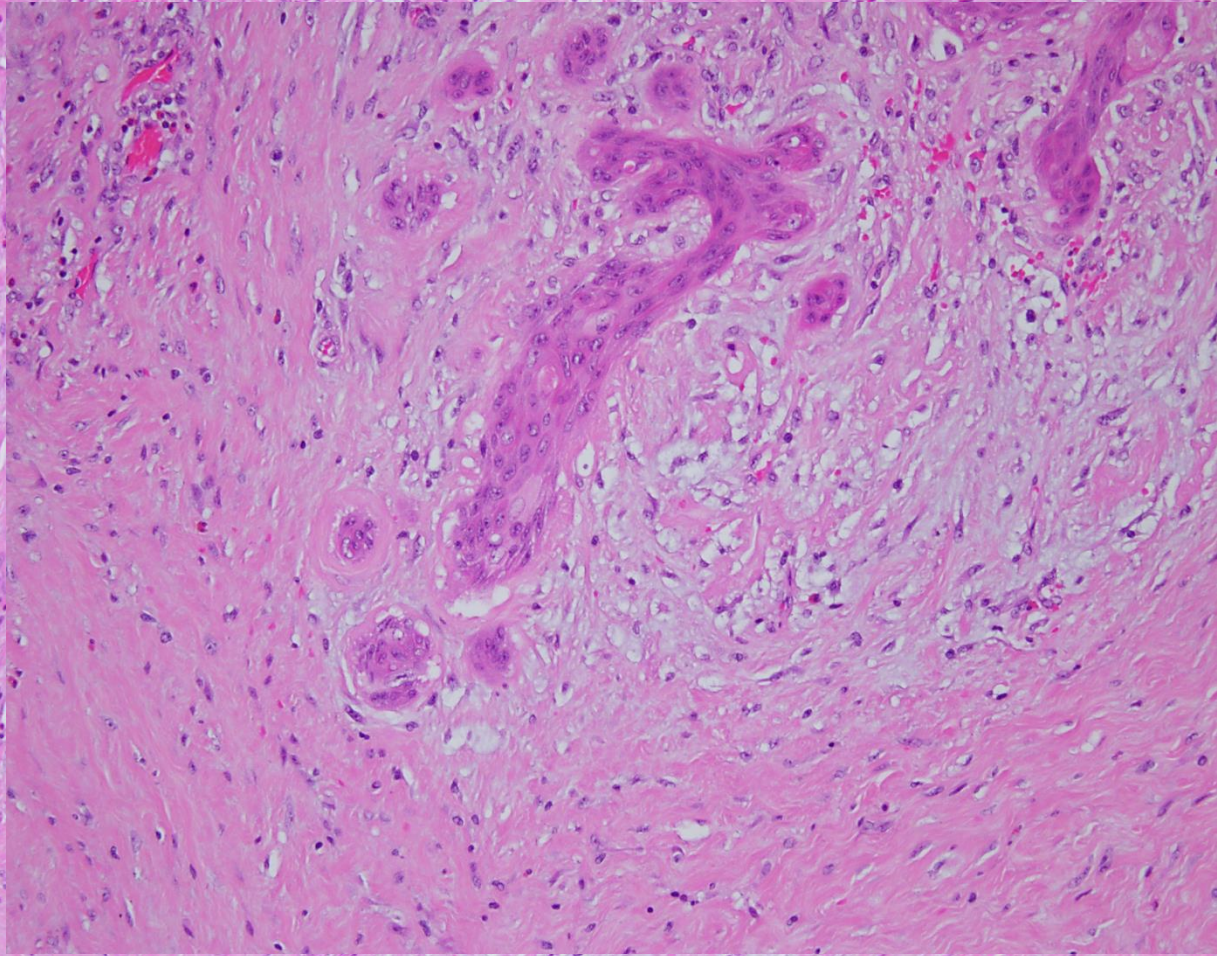
Benign phyllodes tumour



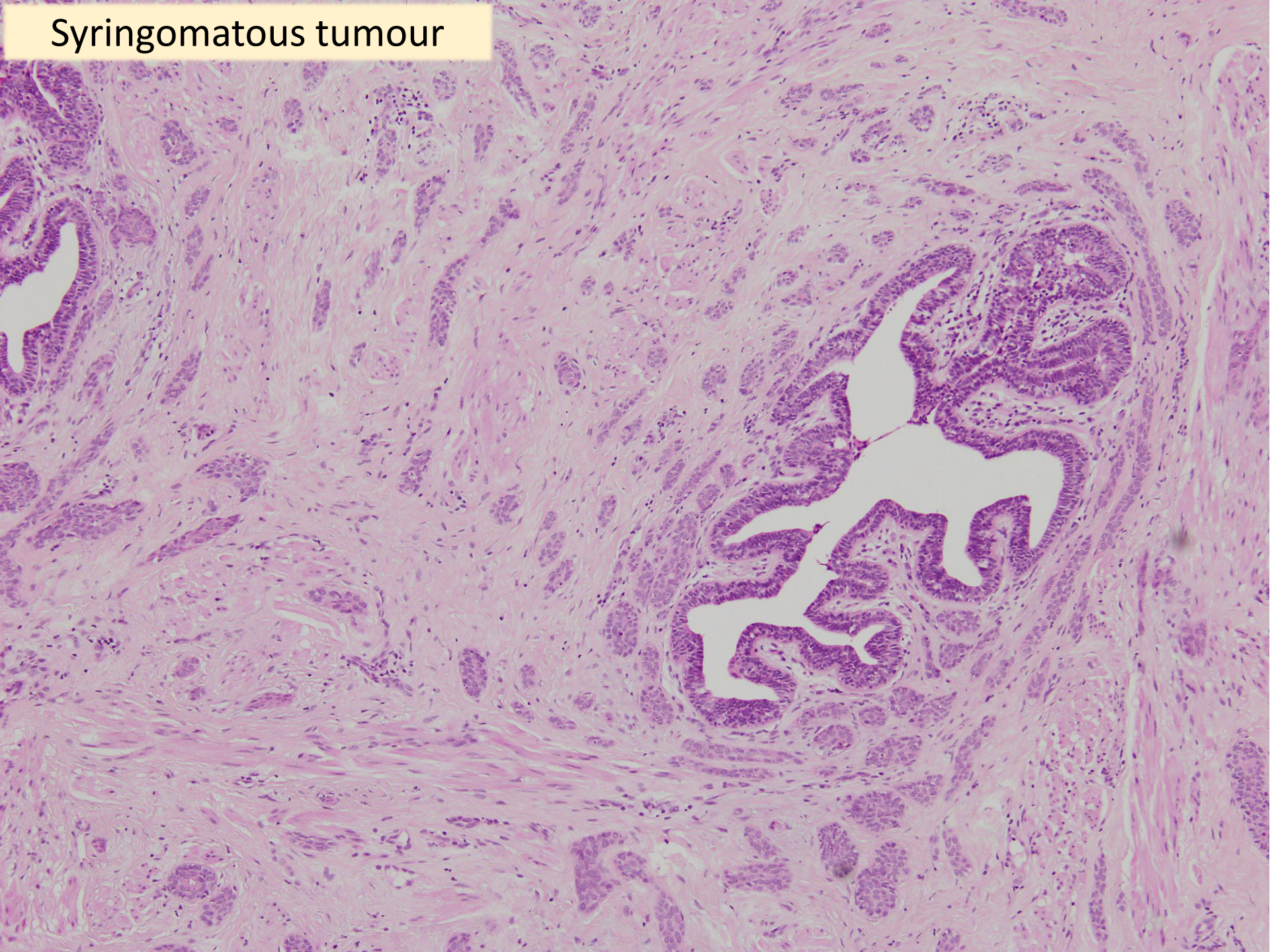
Benign phyllodes tumour



Surgical biopsy cavity wall

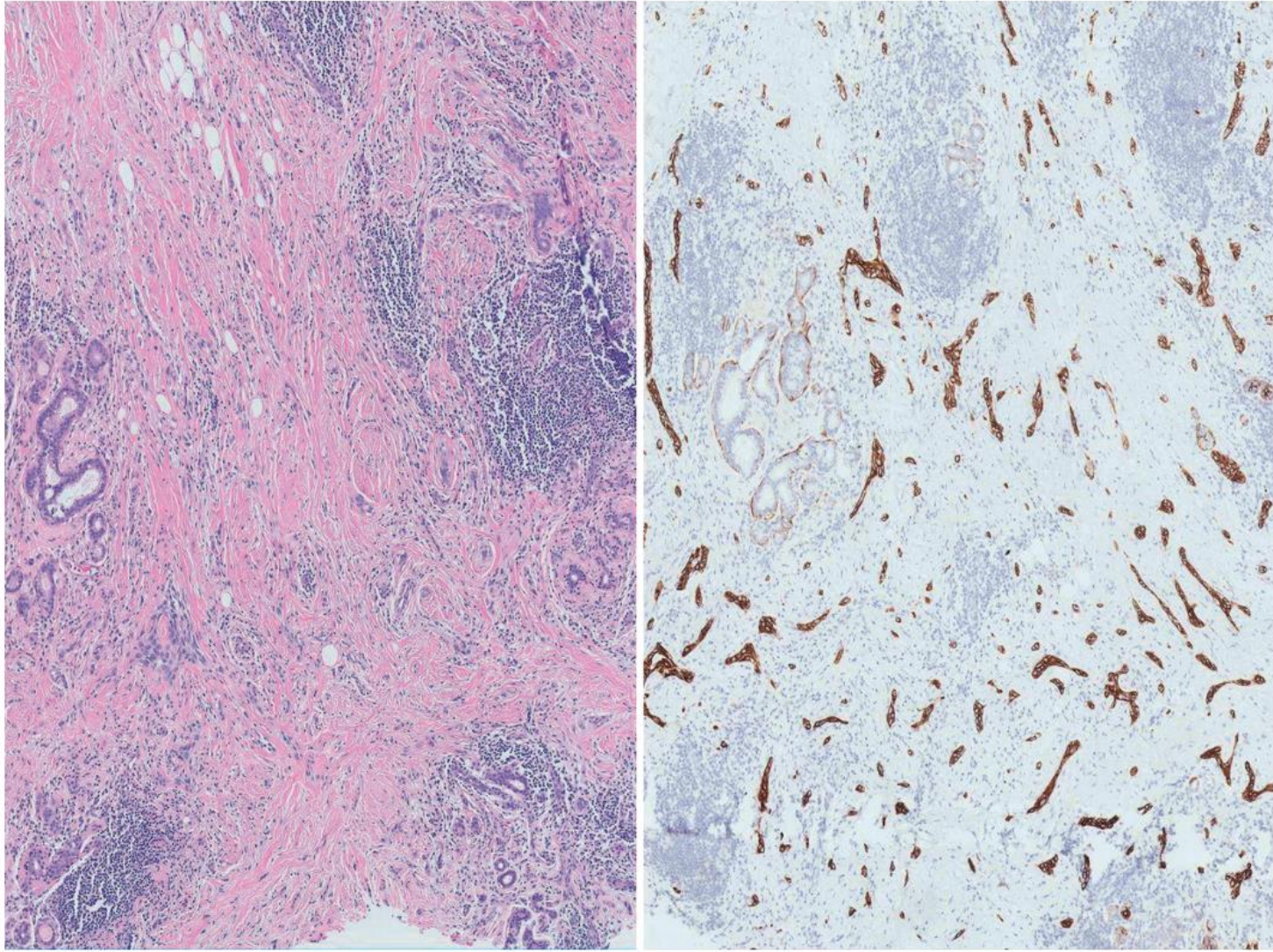


Syringomatous tumour





## Low-grade adenosquamous cancer



**Fig. 12.87** Low-grade adenosquamous carcinoma. Immunohistochemistry with CK5/6 reveals many more epithelial strands and angulated nests than are seen on H&E microscopy, invading the stroma between benign breast lobules

## Squamoid nests

- Seen in a variety of benign breast conditions:
  - Focal alteration
  - Usually confined within the lesion
- Malignant lesions with squamoid nests:
  - Permeative process
  - Extension of the squamoid nests beyond the associated lesion into adjacent breast tissue



2011

Thank you!

Thank you!

*Thank you!*