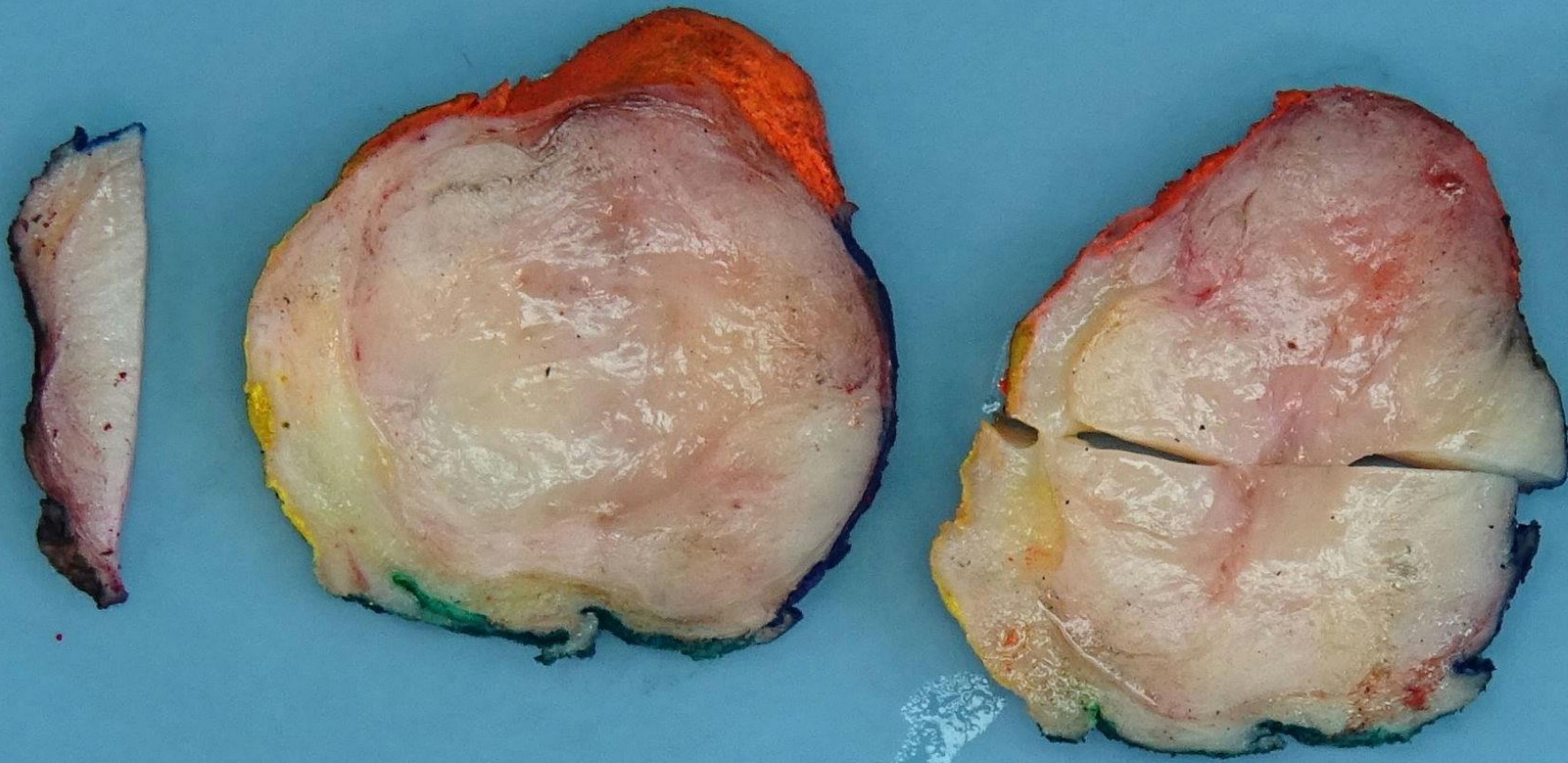


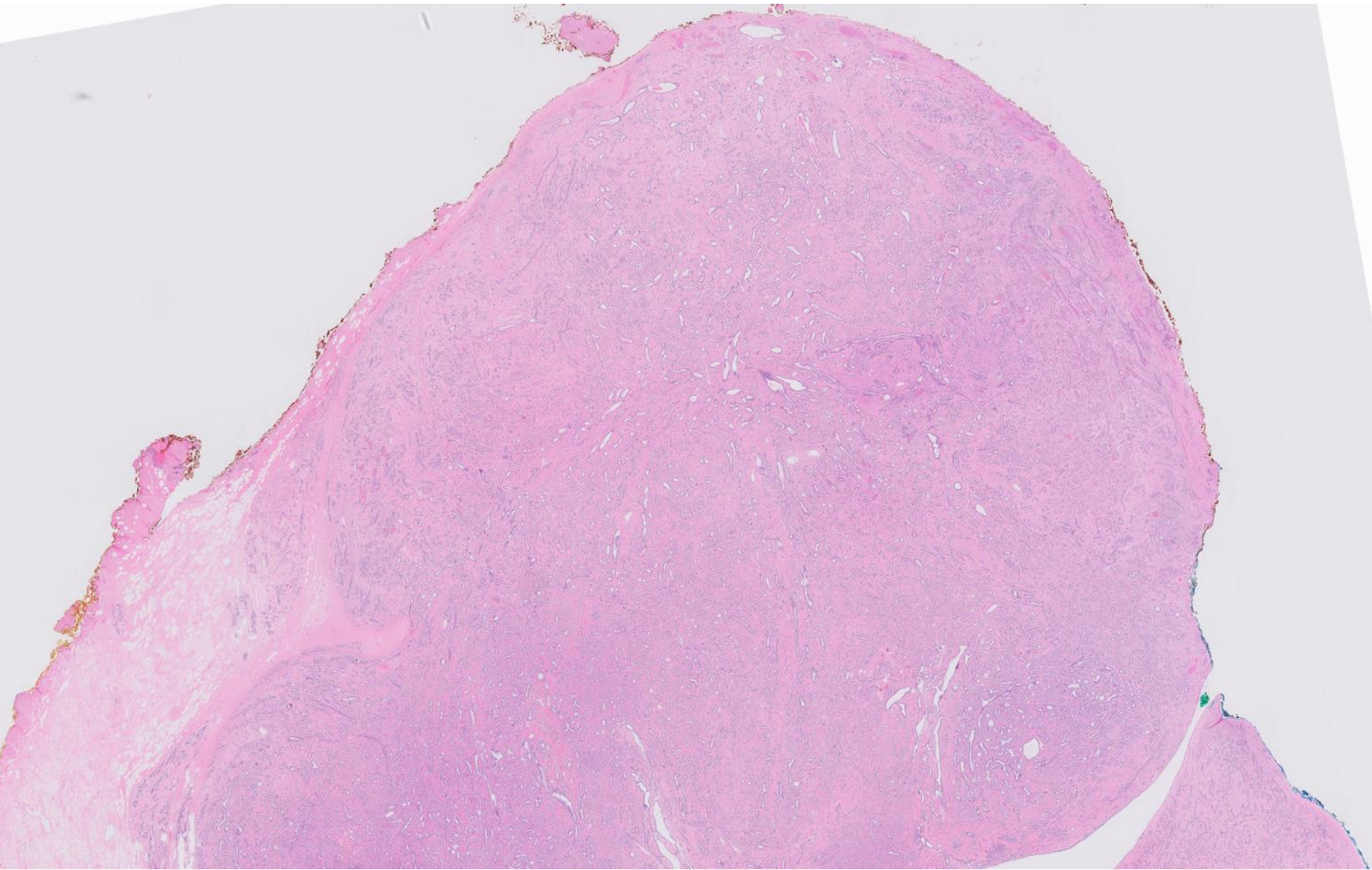
Case 19

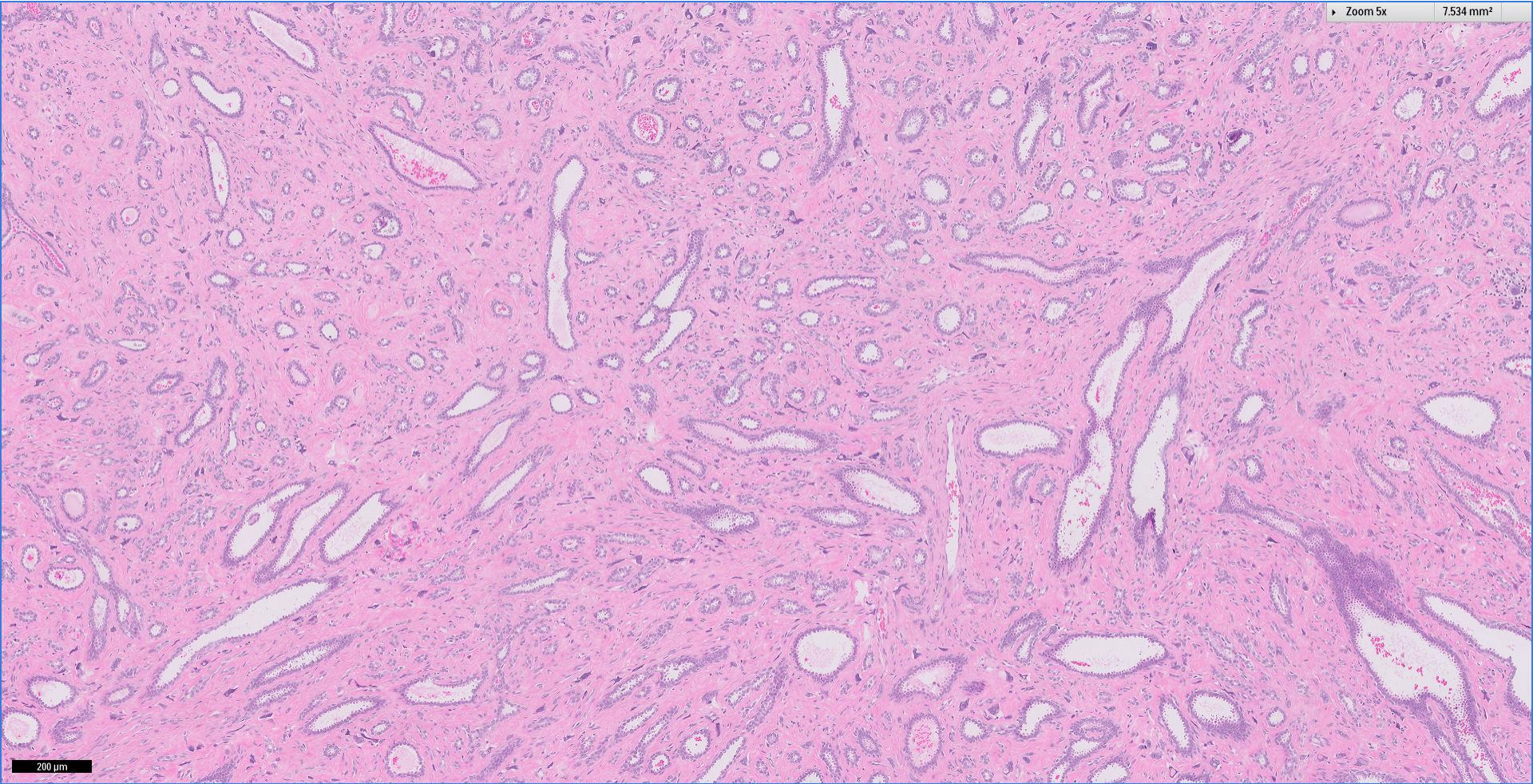
30 year old Malay female.
Left breast lump, excision biopsy.

Presented by Dr Puay Hoon Tan



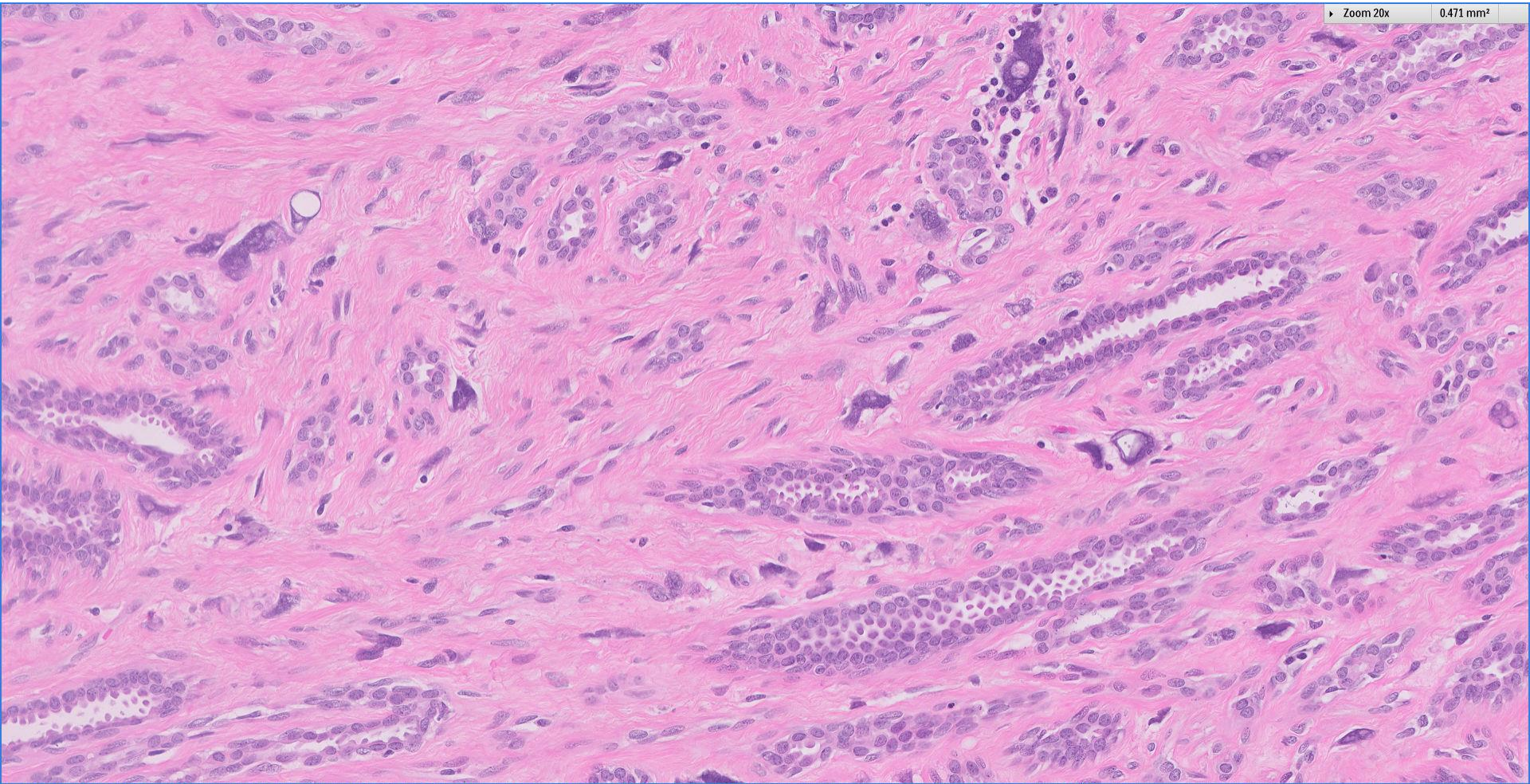






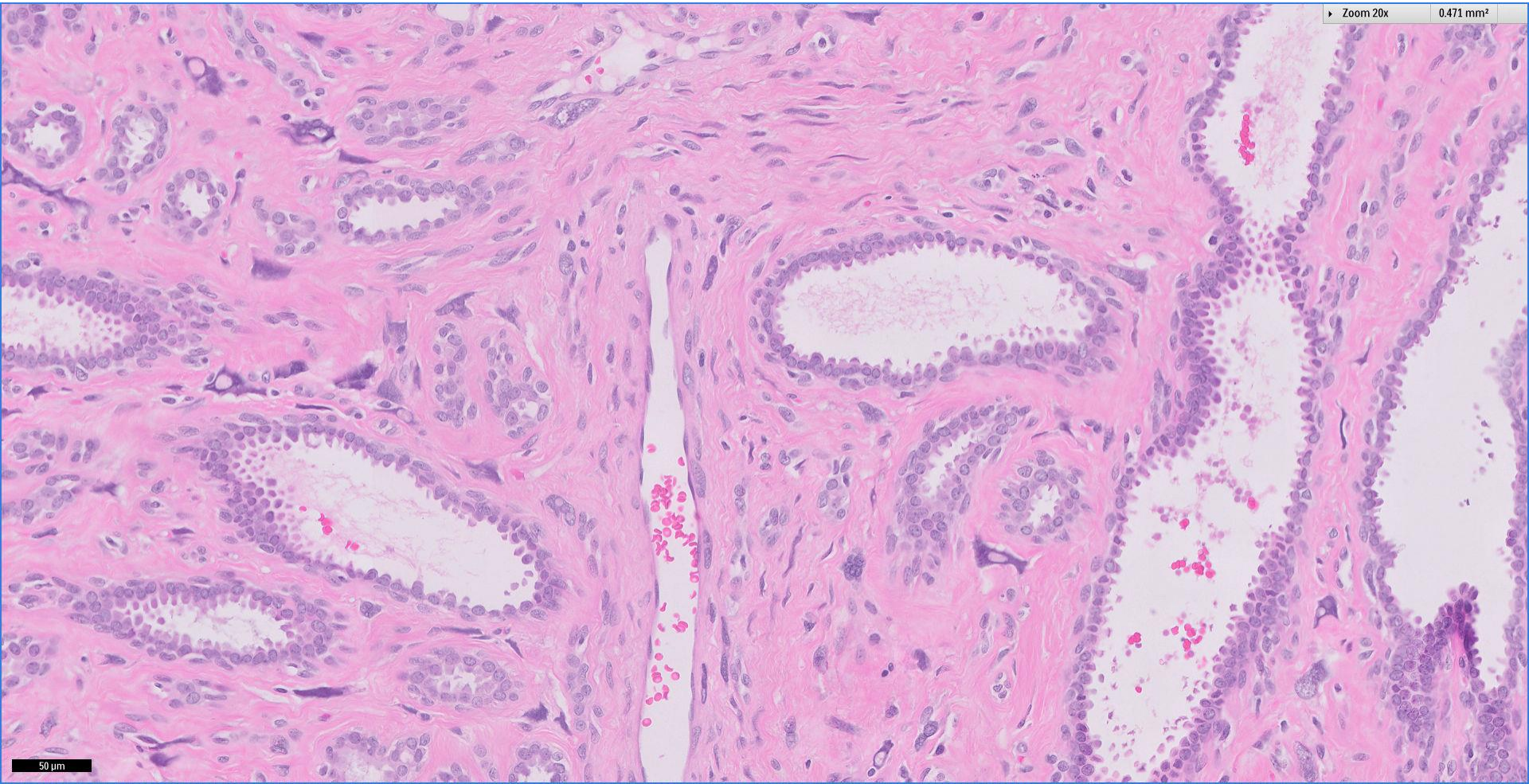
Zoom 20x

0.471 mm²



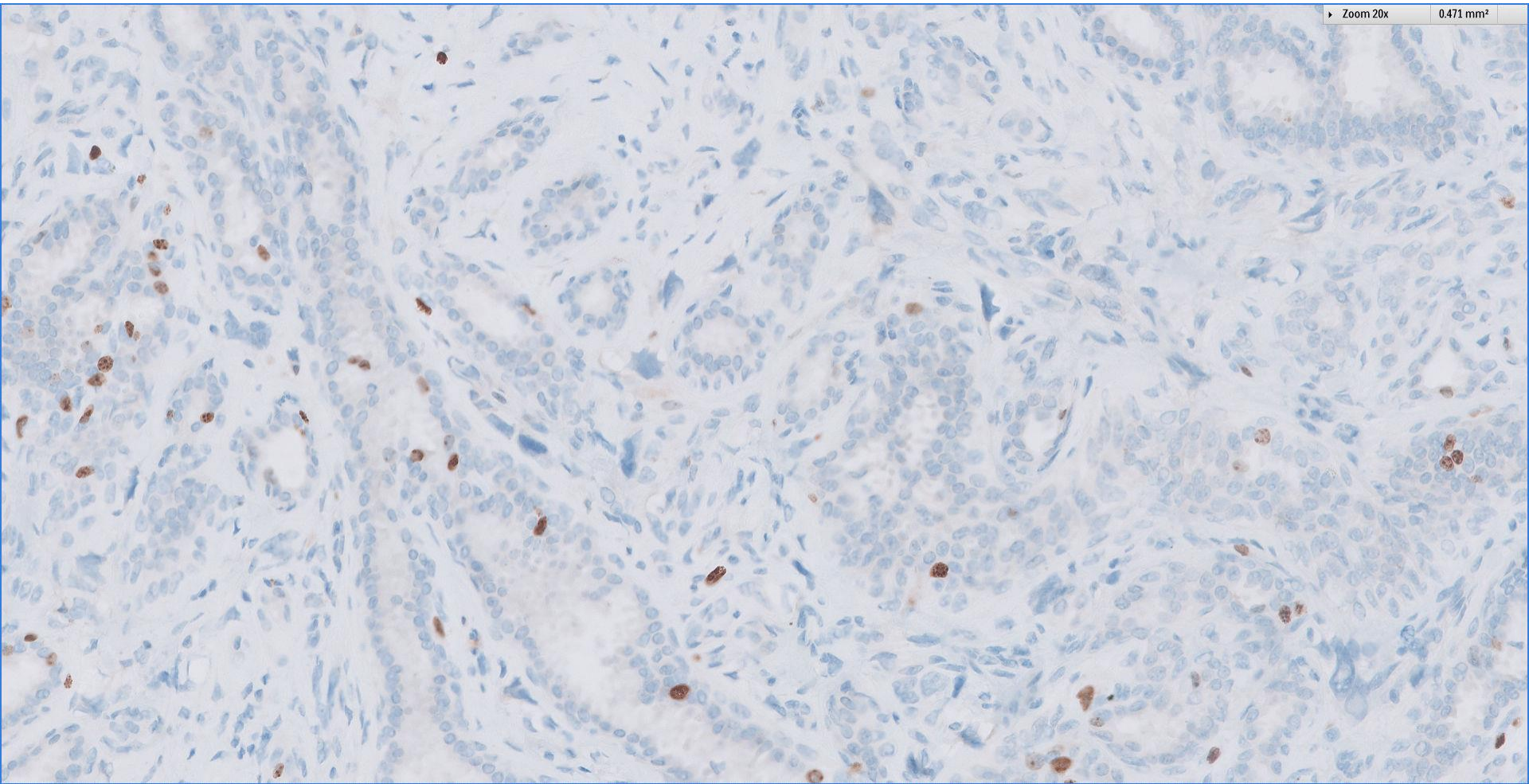
Zoom 20x

0.471 mm²

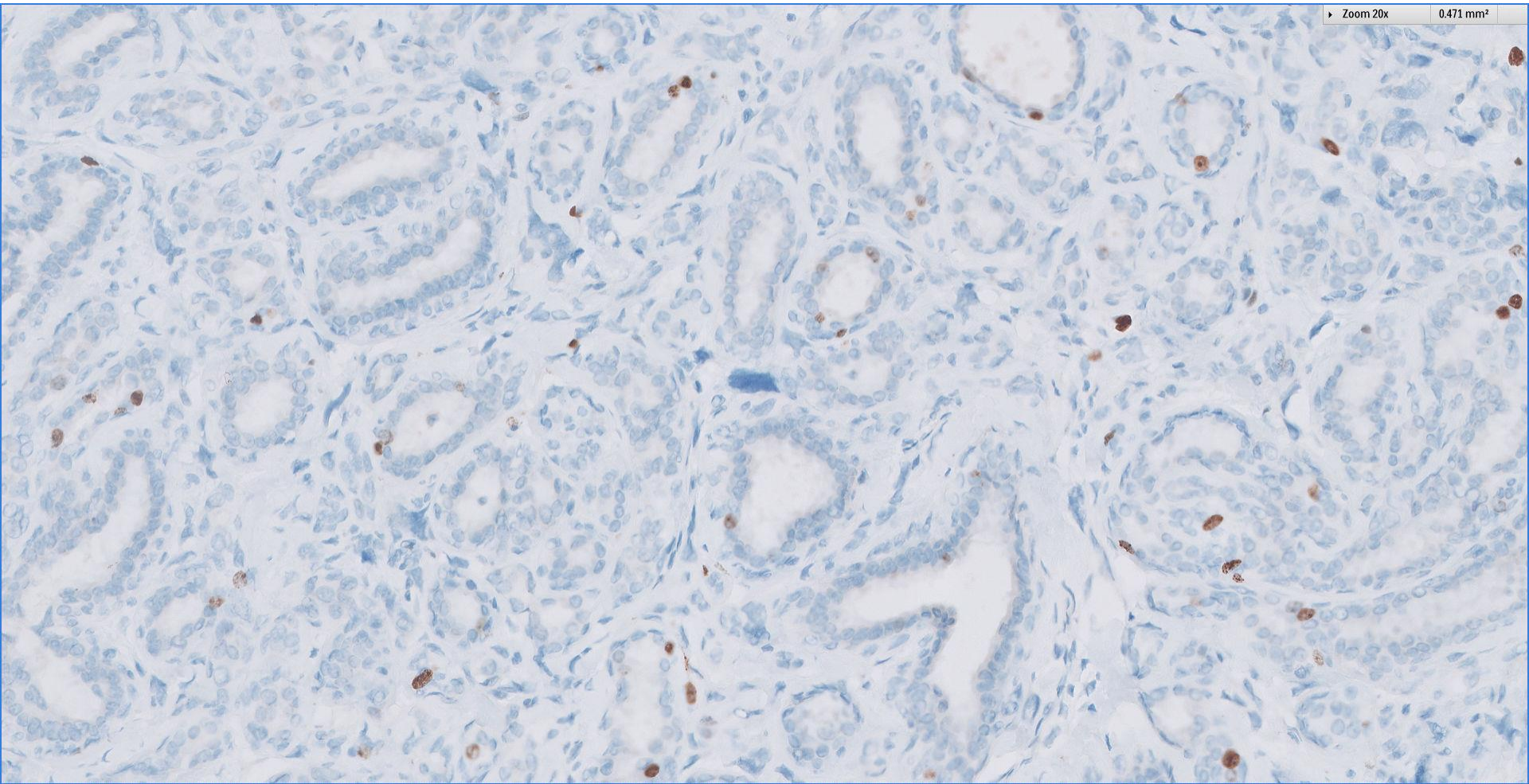


50 μm

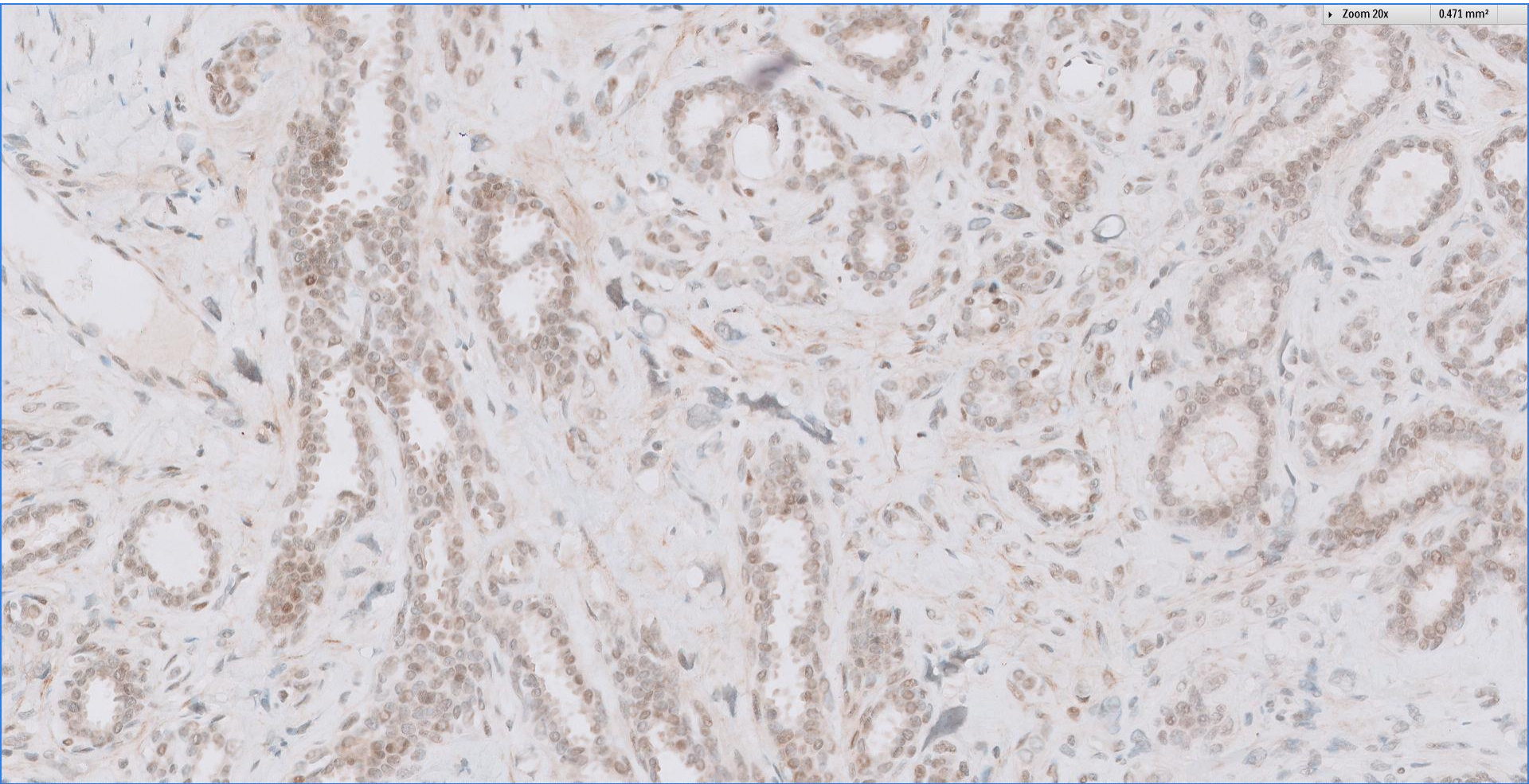
Ki67



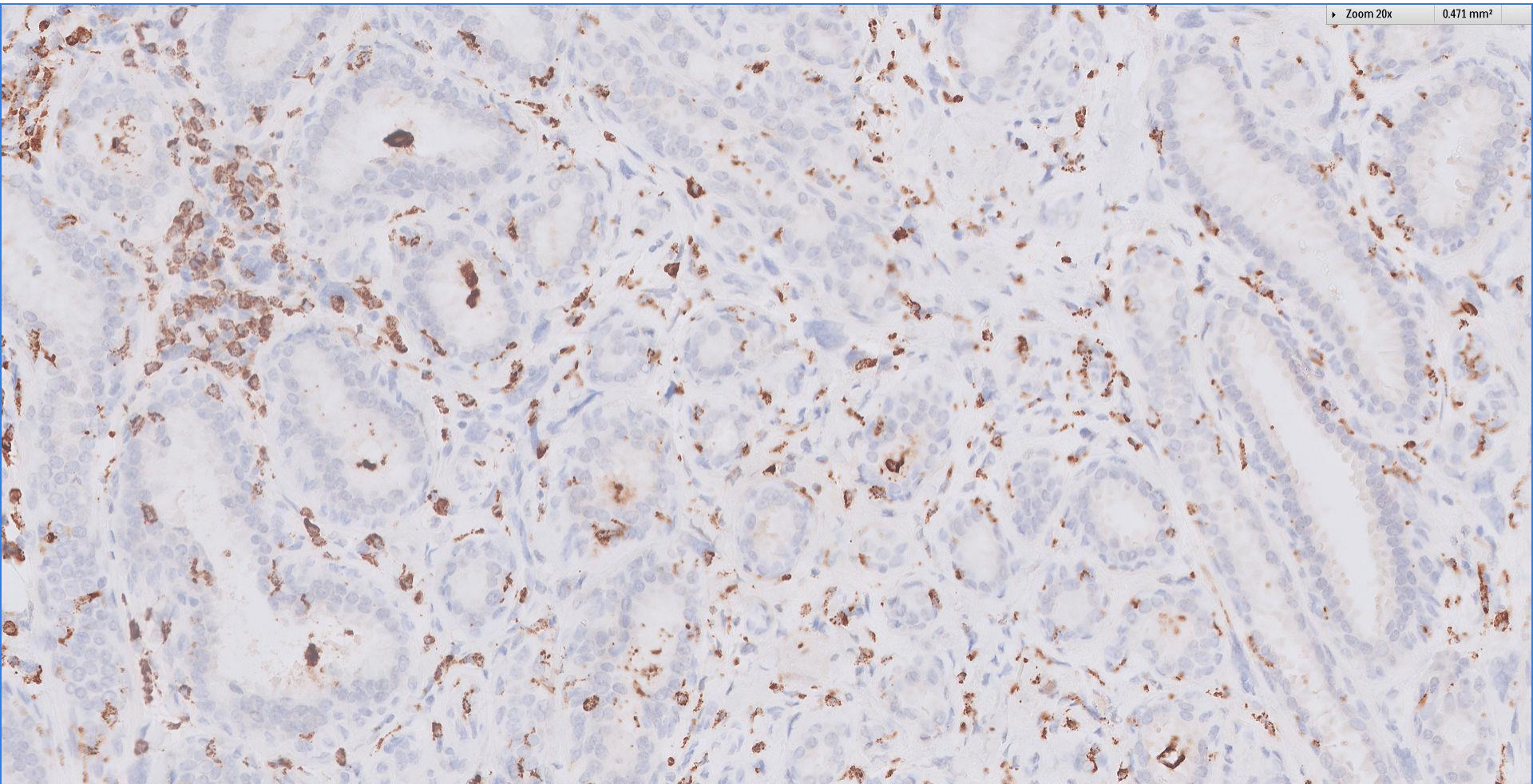
Ki67



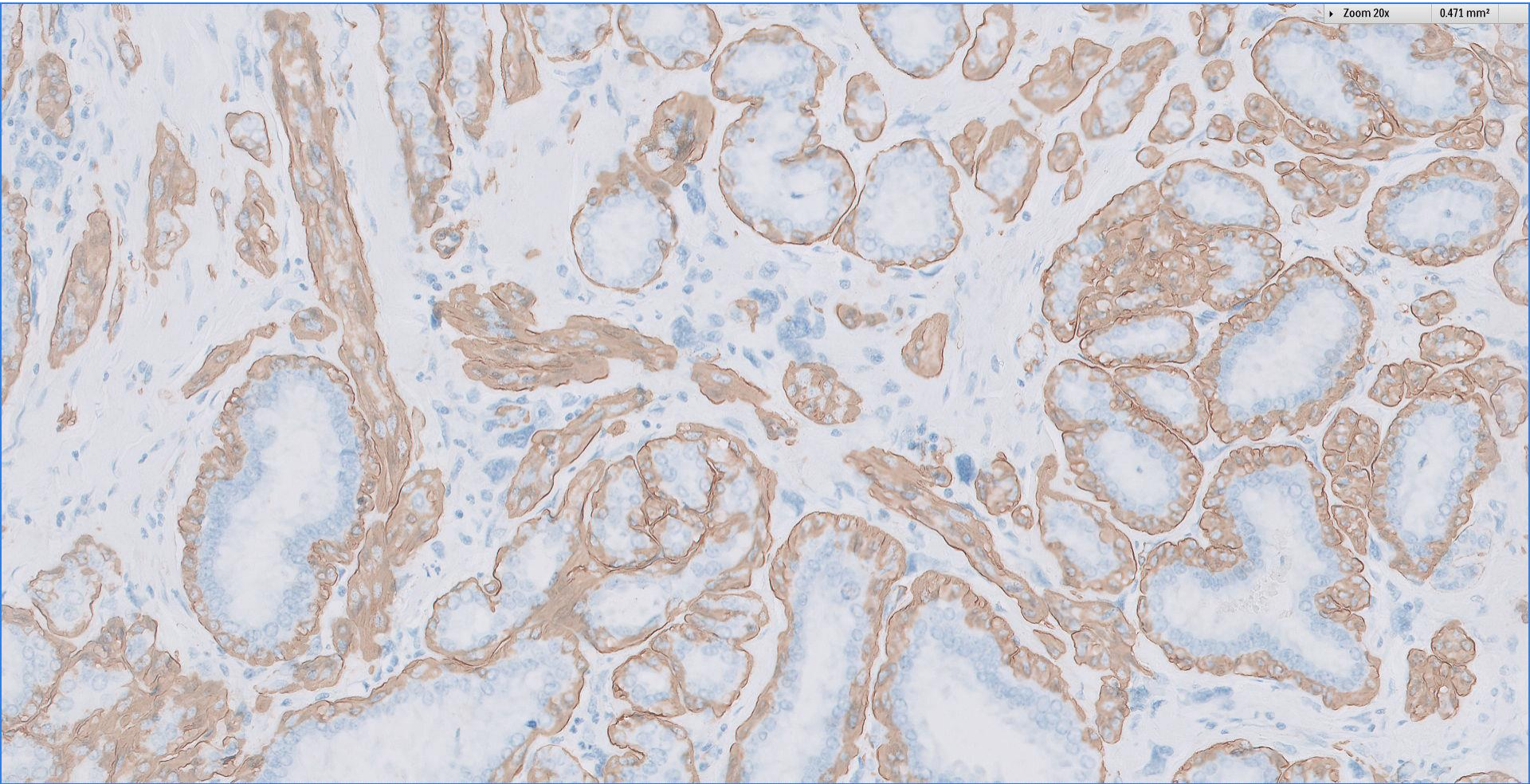
p53



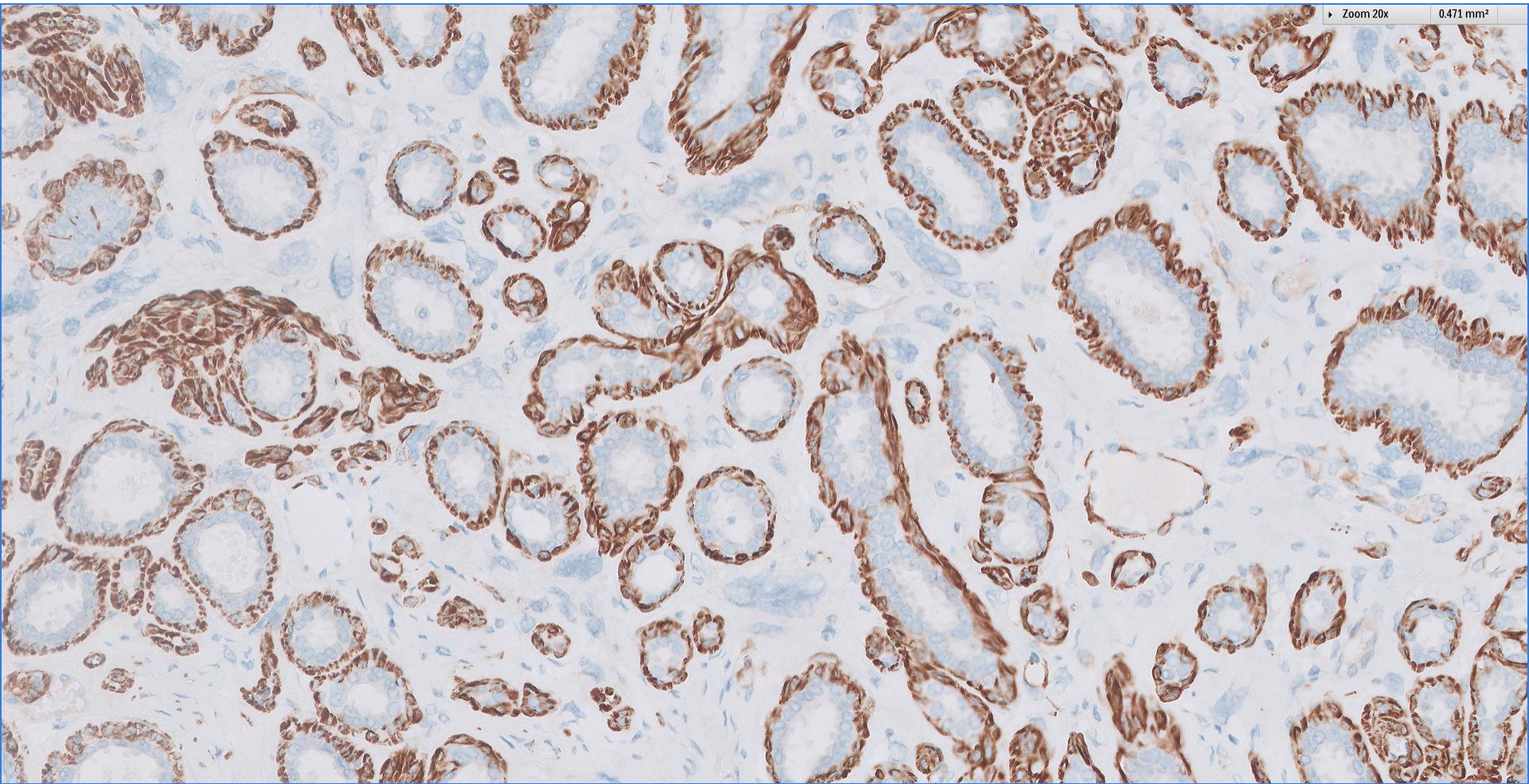
CD68



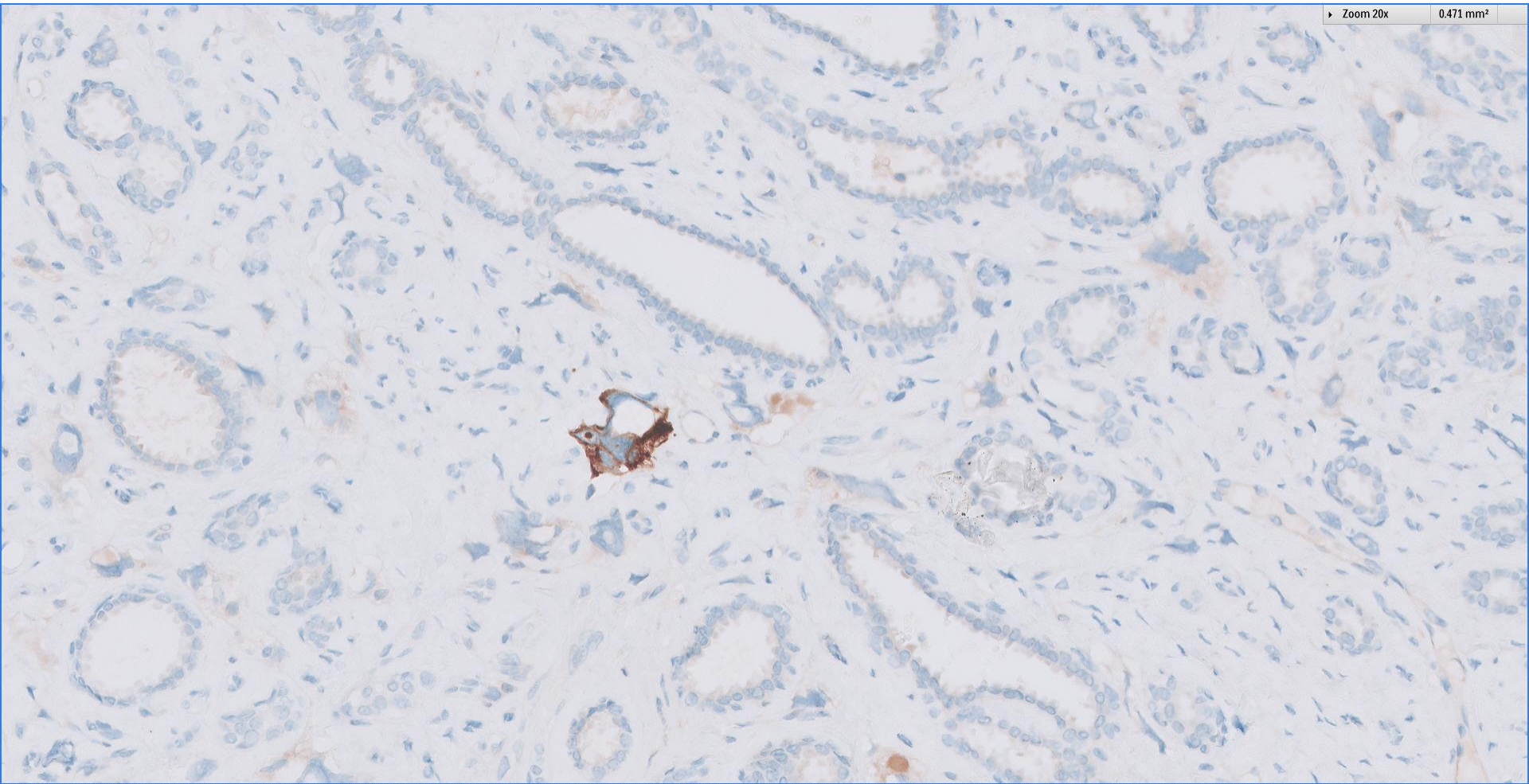
SMA



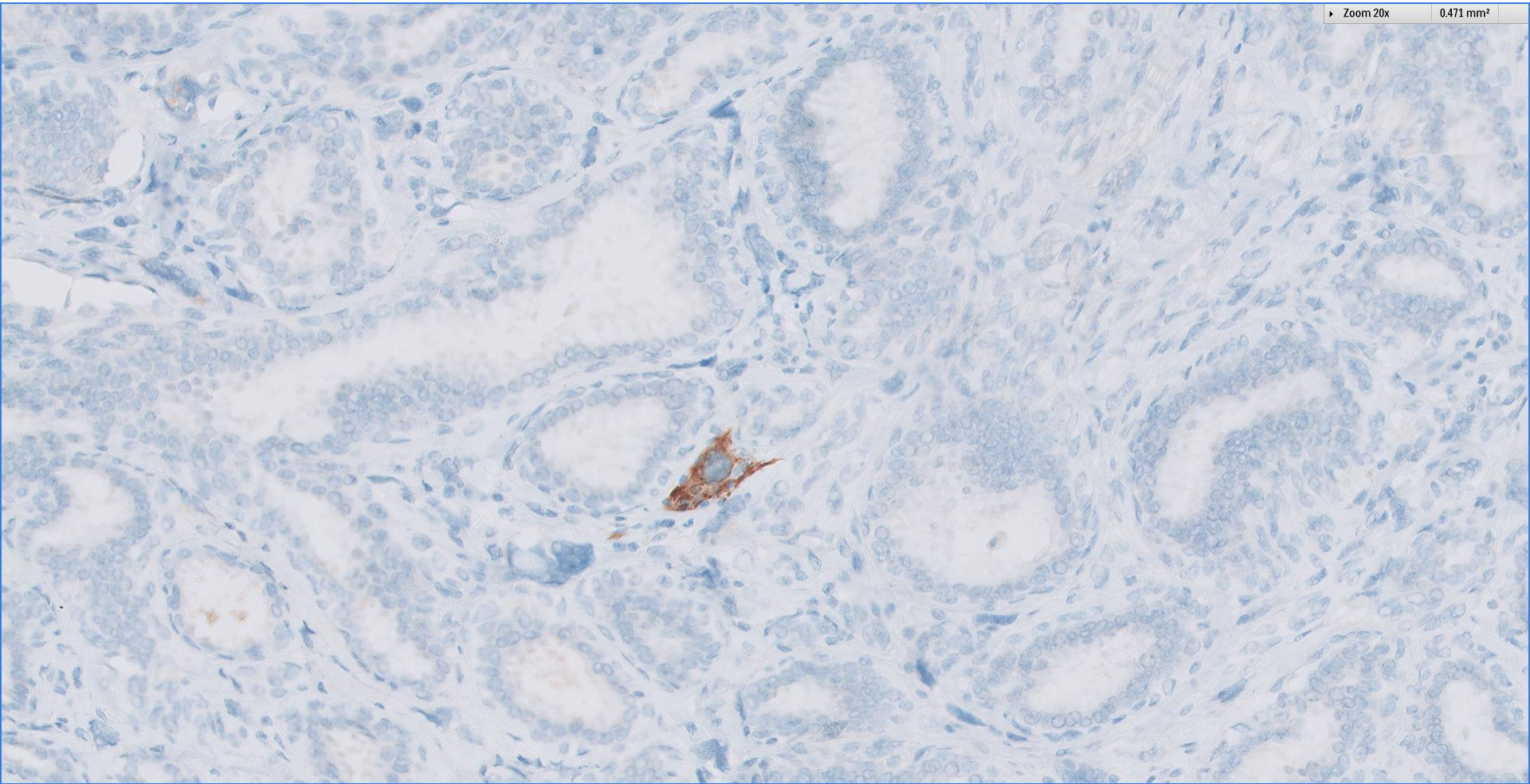
SMMS



desmin



desmin



Diagnosis

Hybrid tubular adenoma-fibroadenoma
with bizarre multinucleated stromal cells



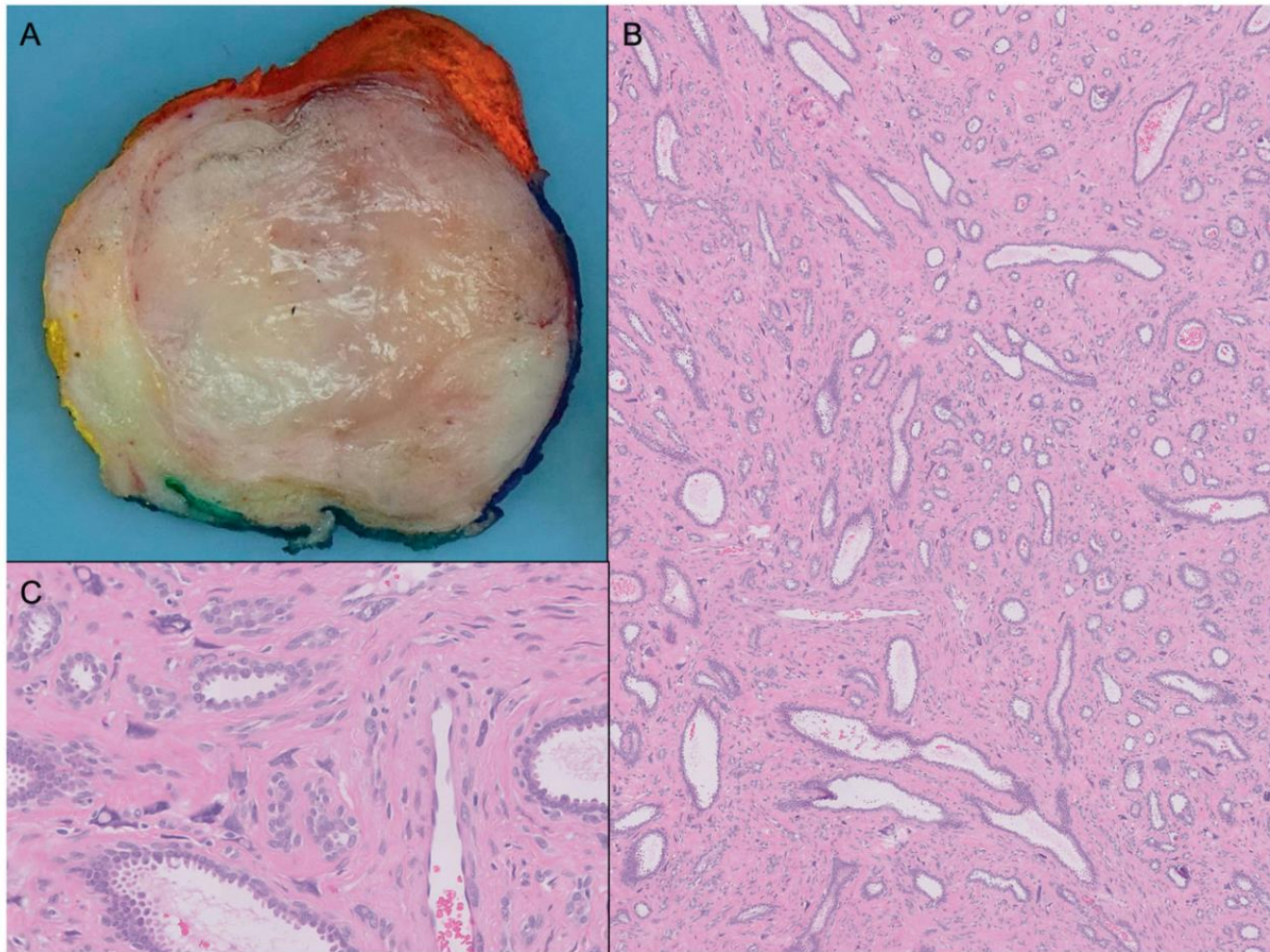


Fig. 16 Benign fibroepithelial tumour with hybrid tubular adenoma and fibroadenoma areas and bizarre multinucleated stromal cells. a Gross appearance of the benign tumour with circumscribed borders and a fibrous myxoid cut-surface. **b** Stroma in between the

epithelial component shows low cellularity with scattered enlarged stromal cells. **c** High magnification of the abnormal stromal cells with multilobated nuclei and nuclear inclusions. Spindled stromal cells present are without atypia or mitoses.

Multinucleated stromal cells

- Observed in benign breast tissue & fibroepithelial neoplasms.
- Mitotically inactive and morphologically bizarre.
- Mesenchymal (fibroblastic) origin.
- Should not be mistaken for malignant cells on microscopy.

Mammary fibroadenoma with multinucleated stromal giant cells.

Berean et al. Am J Surg Pathol 1986 Nov;10(11):823-7.



Division of Pathology
Singapore General Hospital



Multinucleated stromal cells

- Presence in an otherwise benign fibroepithelial lesion has no adverse clinical significance.

Fibroepithelial lesions of the breast with pleomorphic stromal giant cells: a clinicopathologic study of 4 cases and review of the literature.

Huo & Gilcrease. Ann Diagn Pathol 2009 Aug;13(4):226-32.



Division of Pathology
Singapore General Hospital



Multinucleated stromal cells

- Mitoses including atypical forms have been described in association with stromal multinucleated cells.

Fibroadenoma With Pleomorphic Stromal Giant Cells: It's Not as Bad as It Looks!

Wawire et al. Int J Surg Pathol 2017 Aug;25(5):425-427.



Division of Pathology
Singapore General Hospital





Multinucleated stromal cells ~ *immunohistochemistry*

- Vimentin+, less frequently CD34+.
- Negative for muscle markers, keratins, S-100 protein, vascular markers, CD68 and hormone receptors.
- Majority of multinucleated and mononuclear stromal cells showed reactivity for p53 protein and Ki-67 proliferation antigen.

Benign tumors of the breast with multinucleated stromal giant cells

Immunohistochemical analysis of six cases and review of the literature

Ryška et al. Virch Arch 2001; 439, 768-775.



Division of Pathology
Singapore General Hospital

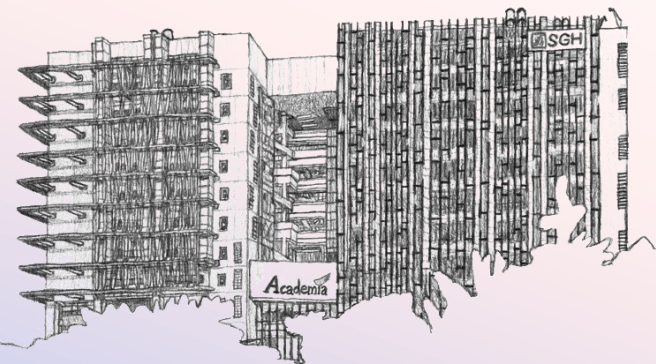


To reference ~ Case 14

49 year old Chinese female.

Excision biopsy of a 3cm right breast lump.

Diagnosis ~ **Borderline phyllodes tumour with
bizarre multinucleated stromal giant cells.**





Breast
Pathology
Course 2020 @21

Pathology

Celebrating 118 years of Pathology in Singapore

Thank You



Division of Pathology
Singapore General Hospital



SingHealth DukeNUS
ACADEMIC MEDICAL CENTRE

PATHOLOGY

