

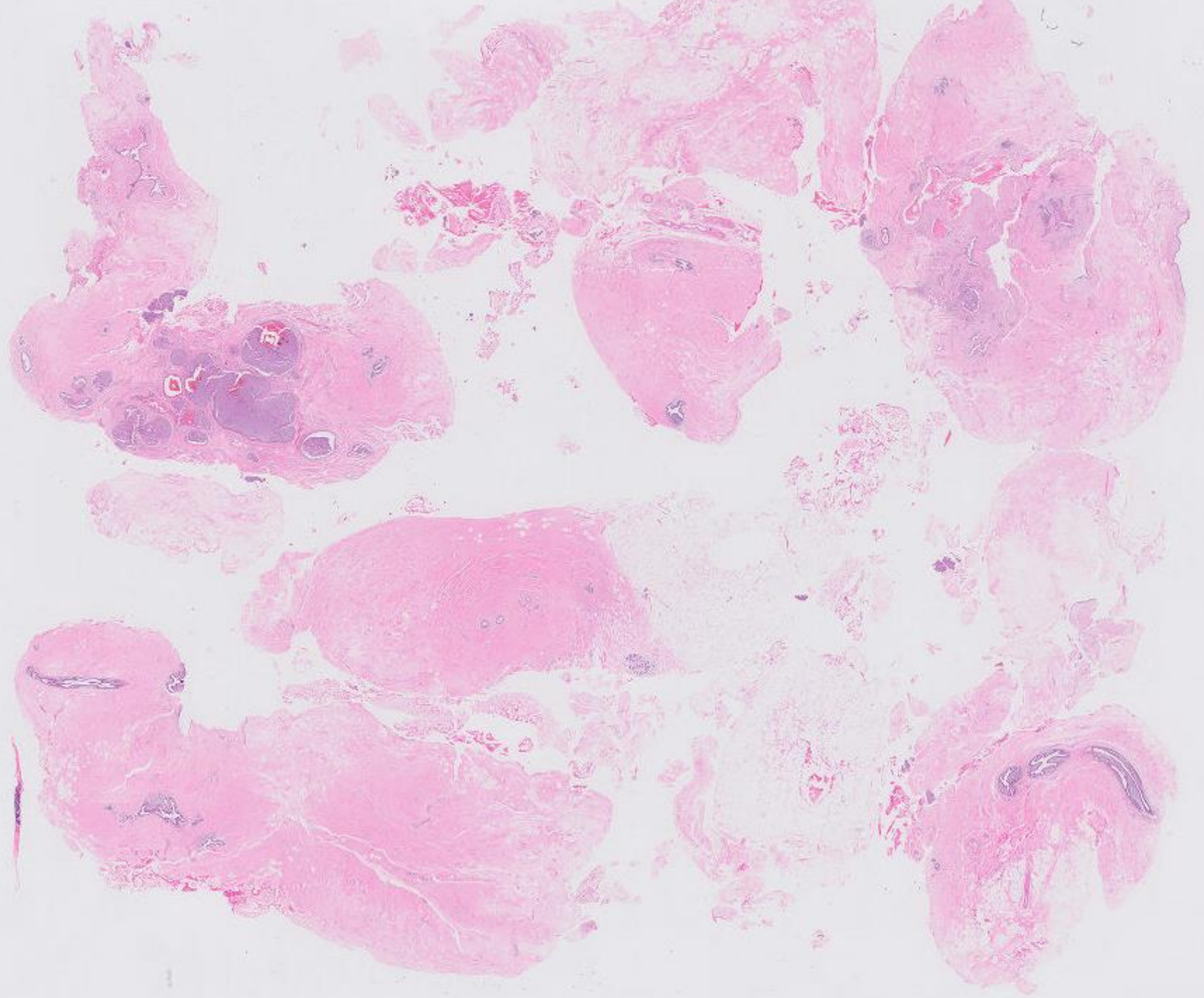


Case 10

26 year old Chinese female.
Left breast retroareolar nodule.

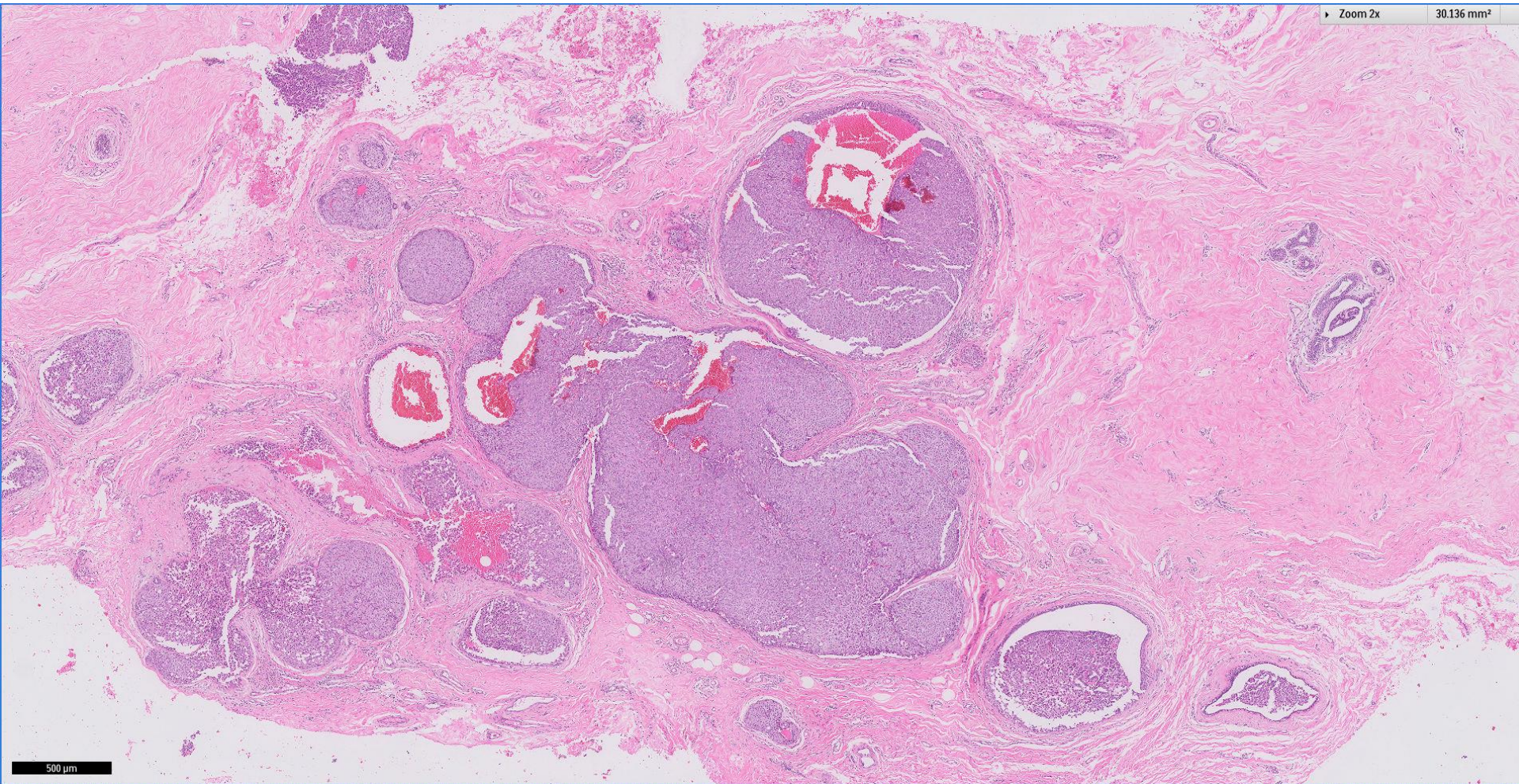
Presented by: Tan Yongcheng Benjamin





Zoom 2x

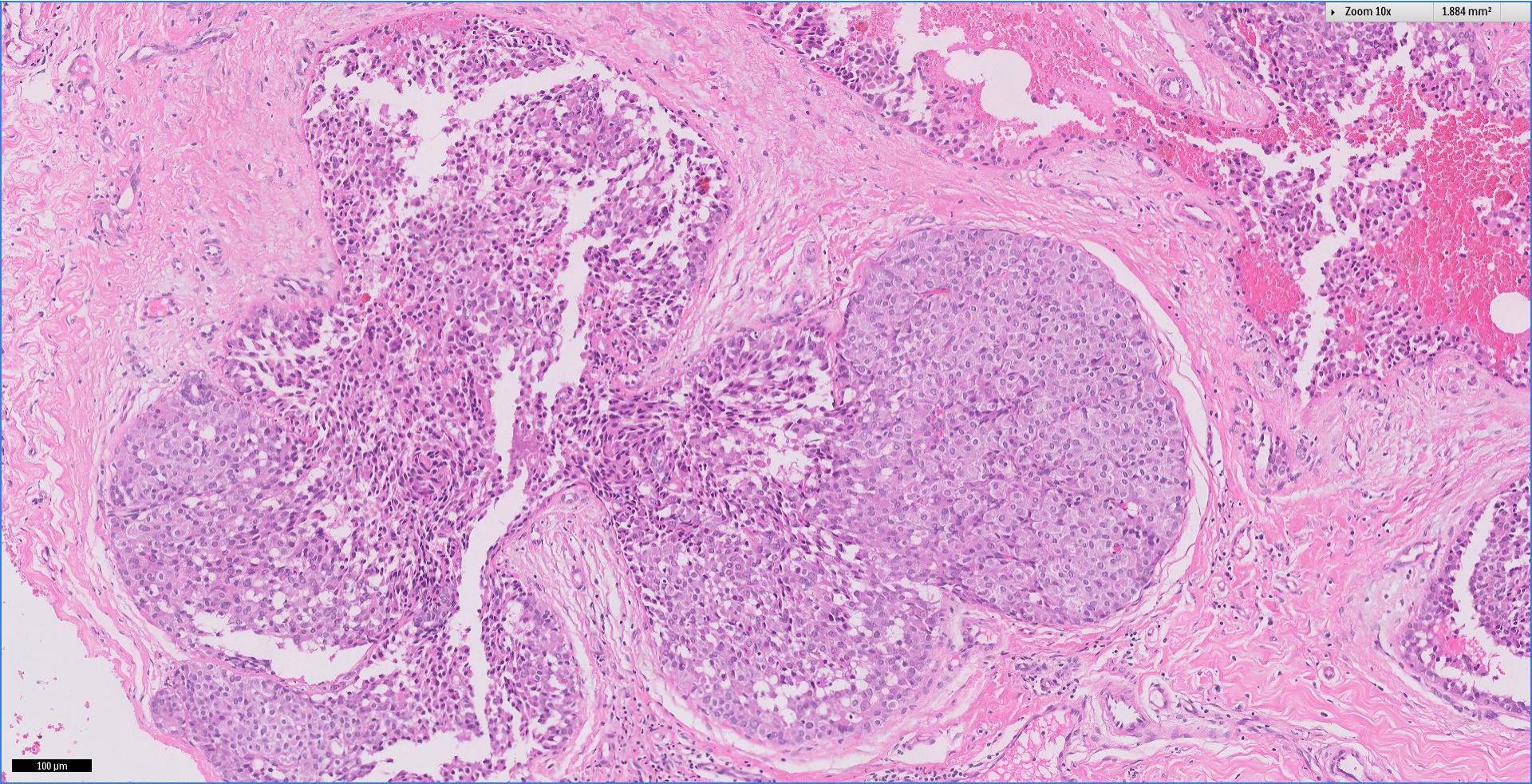
30.136 mm²



500 μm

Zoom 10x

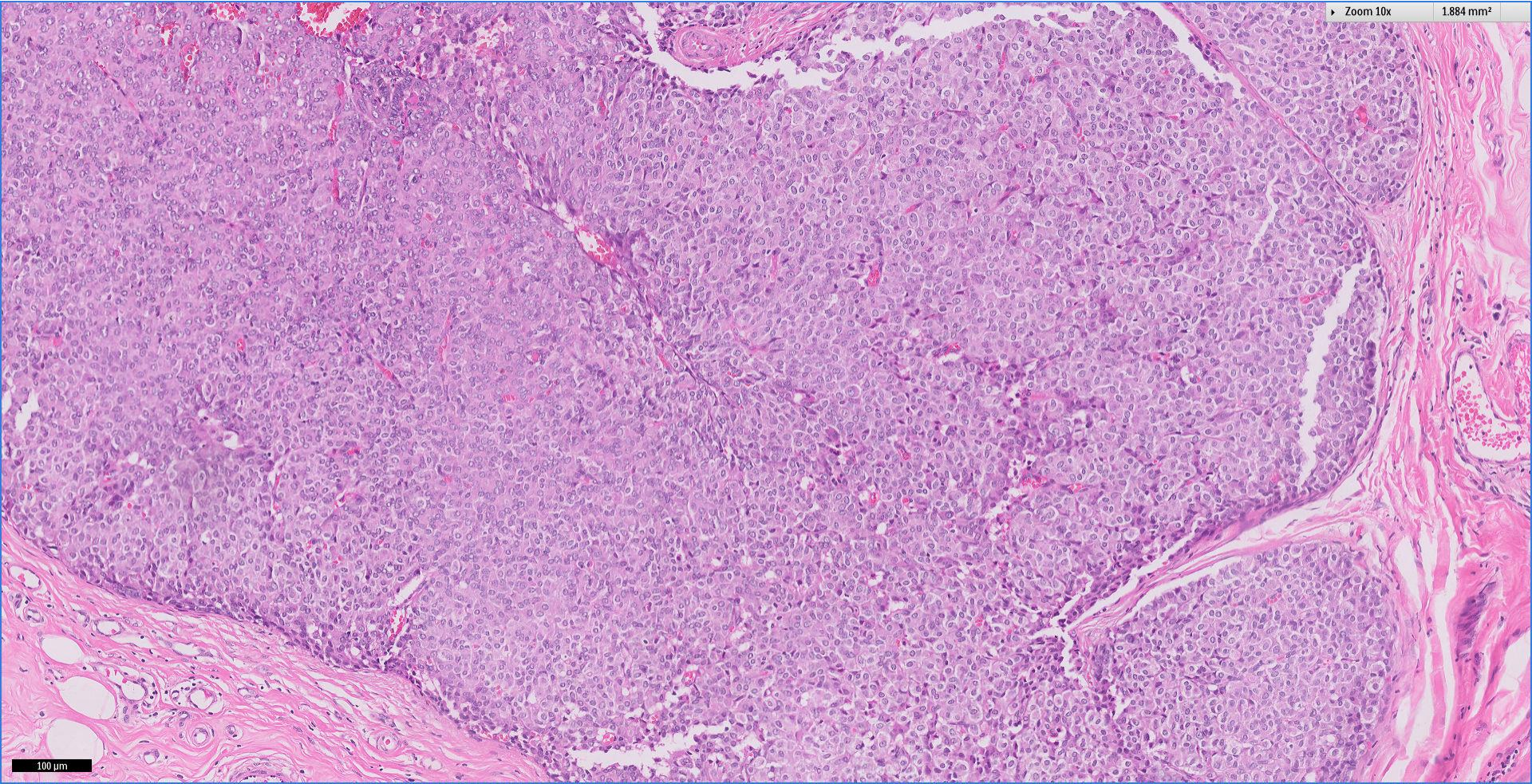
1.884 mm²



100 μm

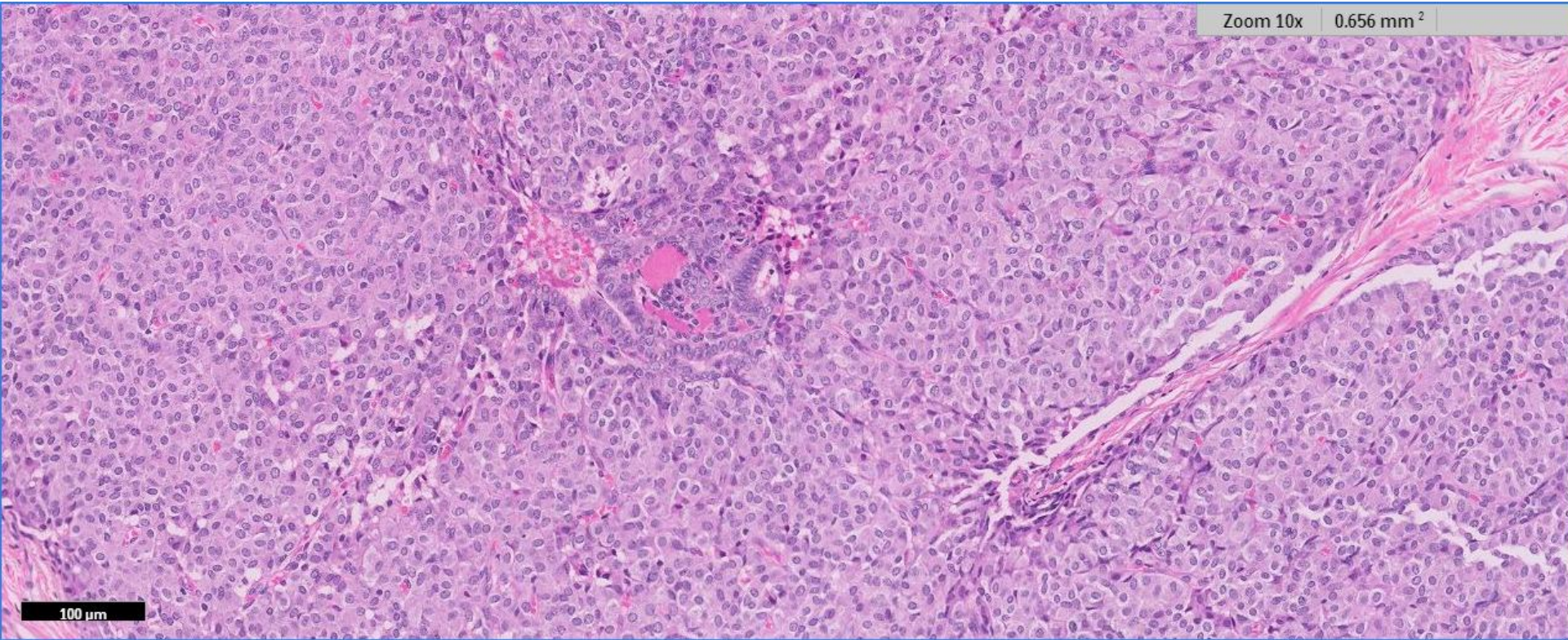
Zoom 10x

1.884 mm²



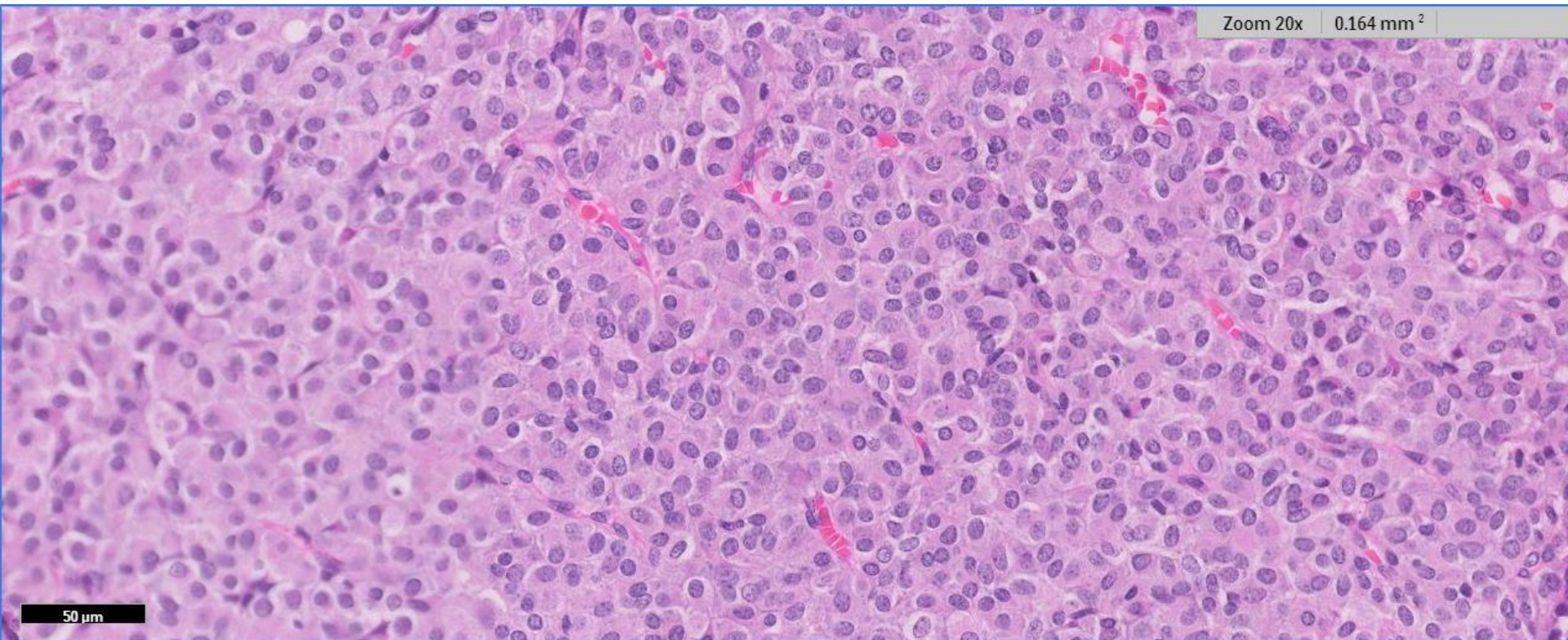
100 μ m

Zoom 10x 0.656 mm²



100 μ m

Zoom 20x 0.164 mm²



50 μm



Diagnosis

- Solid-papillary carcinoma in situ, low nuclear grade



Discussion

- Characterised by expansile nodules
 - Solid growth pattern
 - Delicate fibrovascular cores
 - Round-to-spindled neoplastic cells
 - Usually mild-to-moderate atypia
 - Nuclear palisading around fibrovascular cores
 - Intracellular and extracellular mucin may be present



Discussion

- Strongly positive for ER
- Negative for HER2 overexpression (usually)
- Neuroendocrine differentiation is frequent (synaptophysin, chromogranin)



Discussion

- In-situ:
 - Rounded, well-defined contours
 - Myoepithelial cell layer may be absent
- Invasive
 - “Geographic” pattern of invasion with jagged edges
 - Associated with stromal desmoplasia
 - Invasive component may also be IBC-NST, mucinous carcinoma, lobular ca, etc.



Discussion

- In the absence of an invasive component, solid-papillary carcinomas have an excellent prognosis



Breast
Pathology
Course 2020

Thank You



Division of Pathology
Singapore General Hospital

 SingHealth DukeNUS
ACADEMIC MEDICAL CENTRE

PATHOLOGY

IAP

International Academy of Pathology
Singapore Division