

Case 7

Adult female with a breast mass.



F 31, 6 months pregnant presented with a 2.5 cm indeterminate lump in the Right breast 8:00 6 cm FN.



What are the differentials to consider in pregnancy/ lactation?

- Fibroadenoma with lactational change.
- Lactational Adenoma.
- Galactocele.
- Phyllodes tumour.
- Granulomatous mastitis.
- Carcinoma.

SIEMENS

18L6 HD
*KKH Breast
General

MI: 1.1
60fps

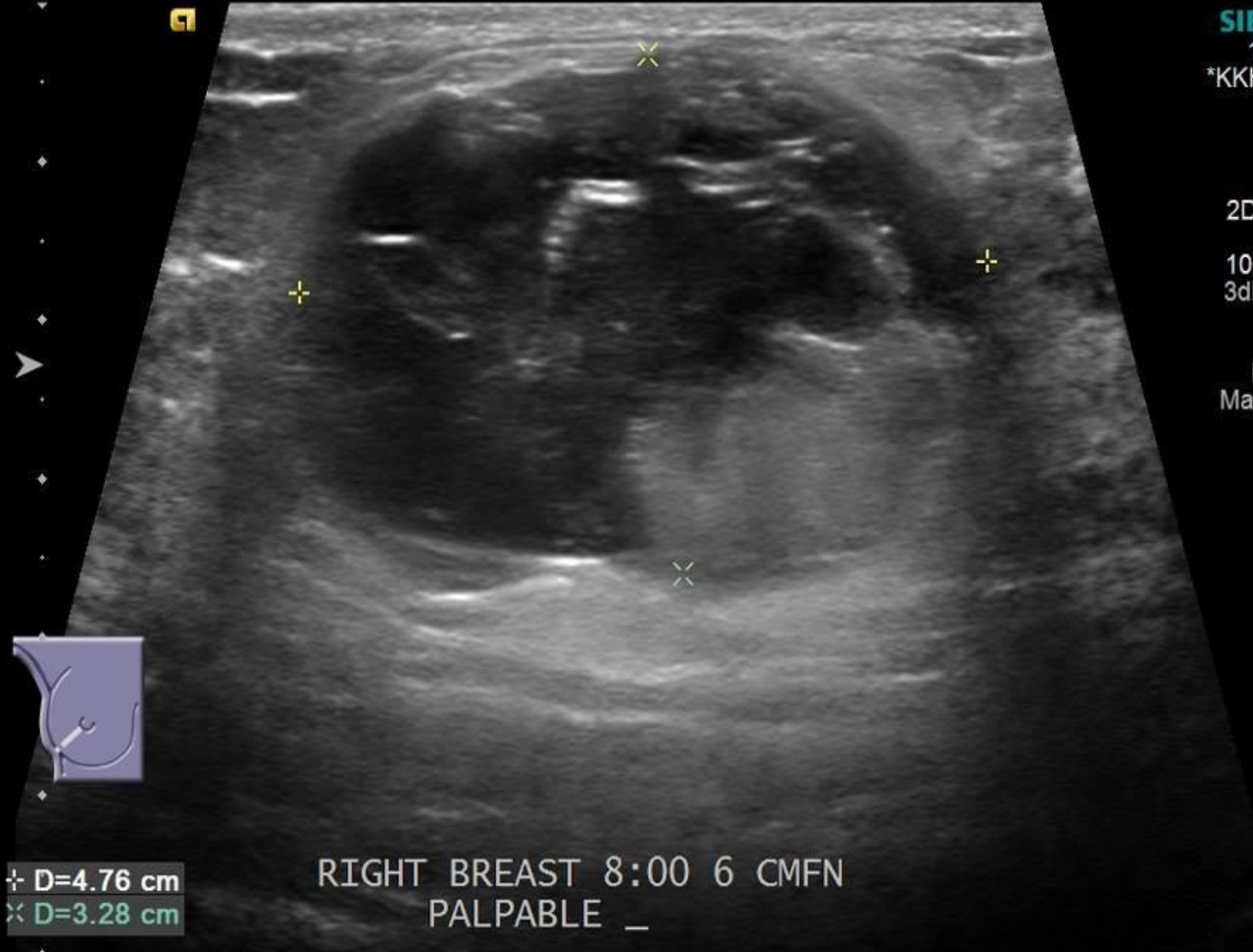
2D-- 100%
GEN

10.00 MHz
3dB/DR60

CTI1
ASC 5

DTCE M
MapD/ST3

E2/P3
T0/B0



+ D=4.76 cm
x D=3.28 cm

RIGHT BREAST 8:00 6 CMFN
PALPABLE _

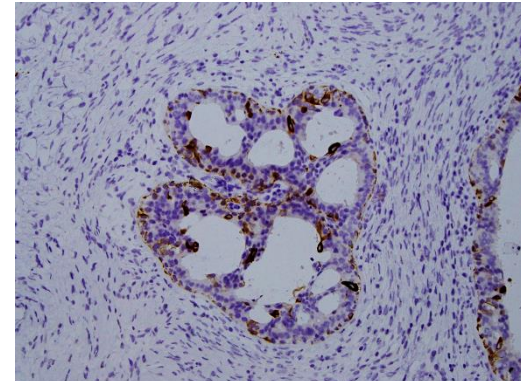
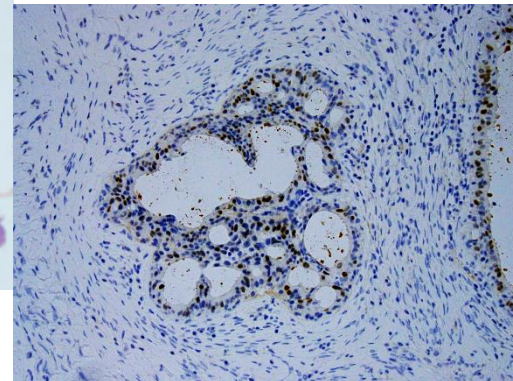
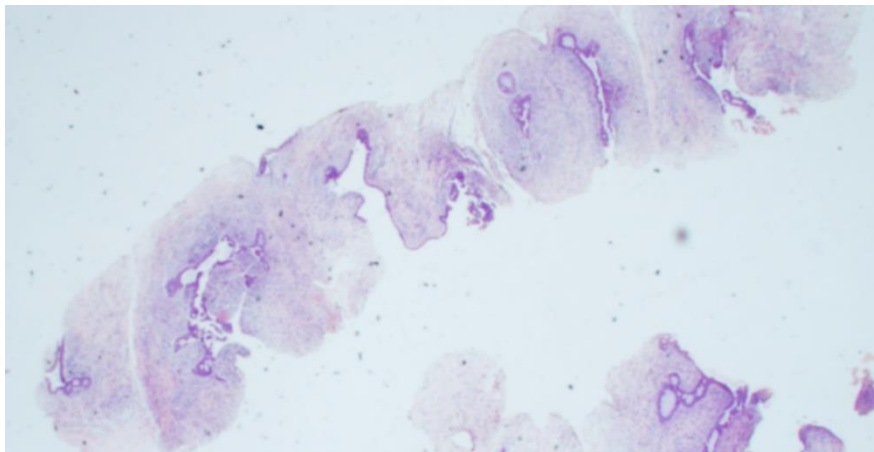
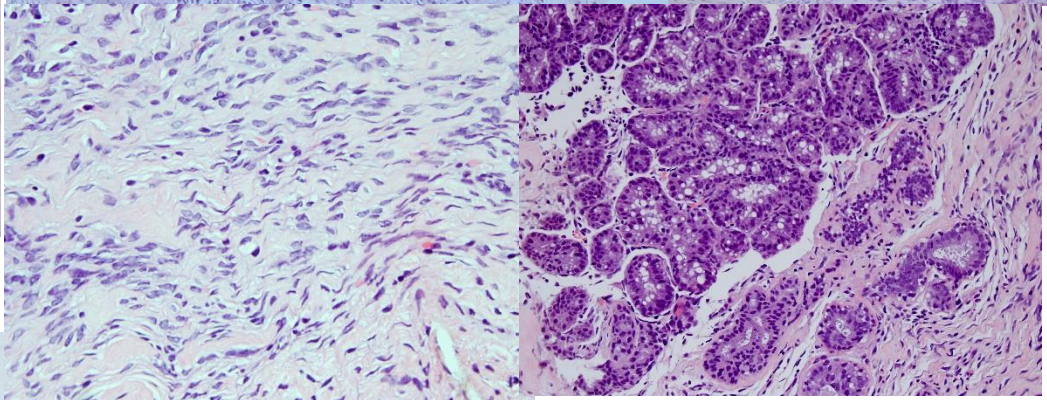
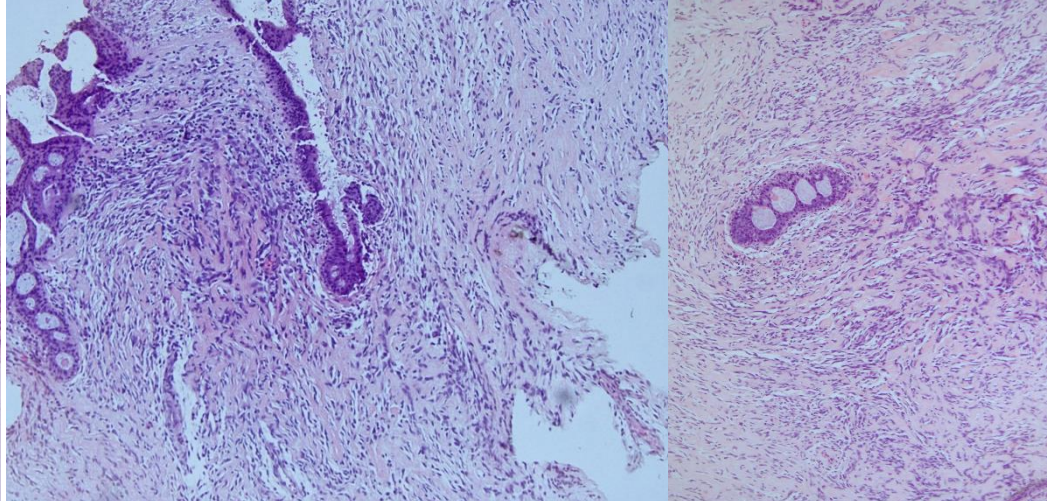
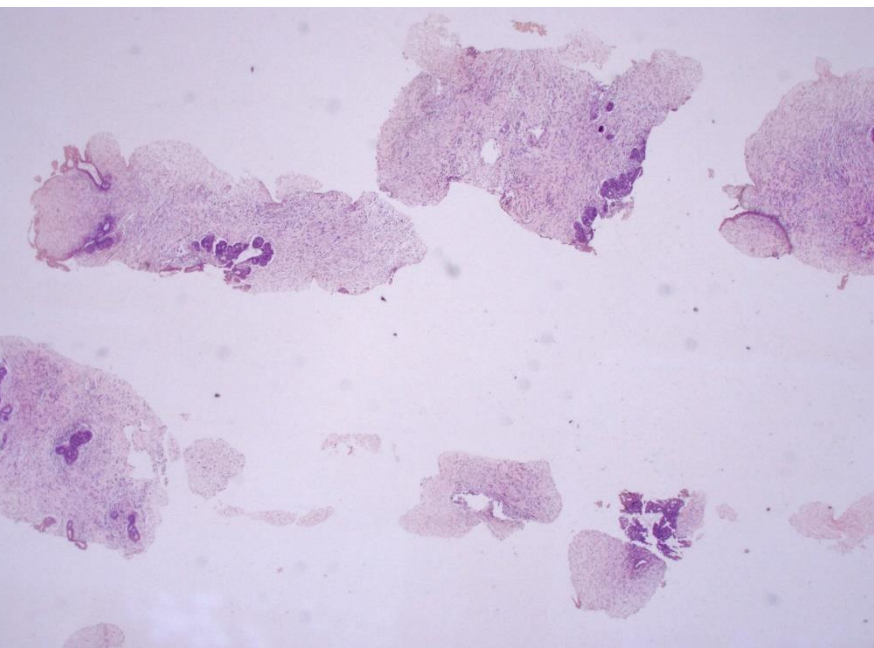
Biopsy

Indeterminate lesion slowly increasing in size for the past few weeks.

Patient was 6 months pregnant.

Biopsy was performed.

Discussed at the Pre op meeting.

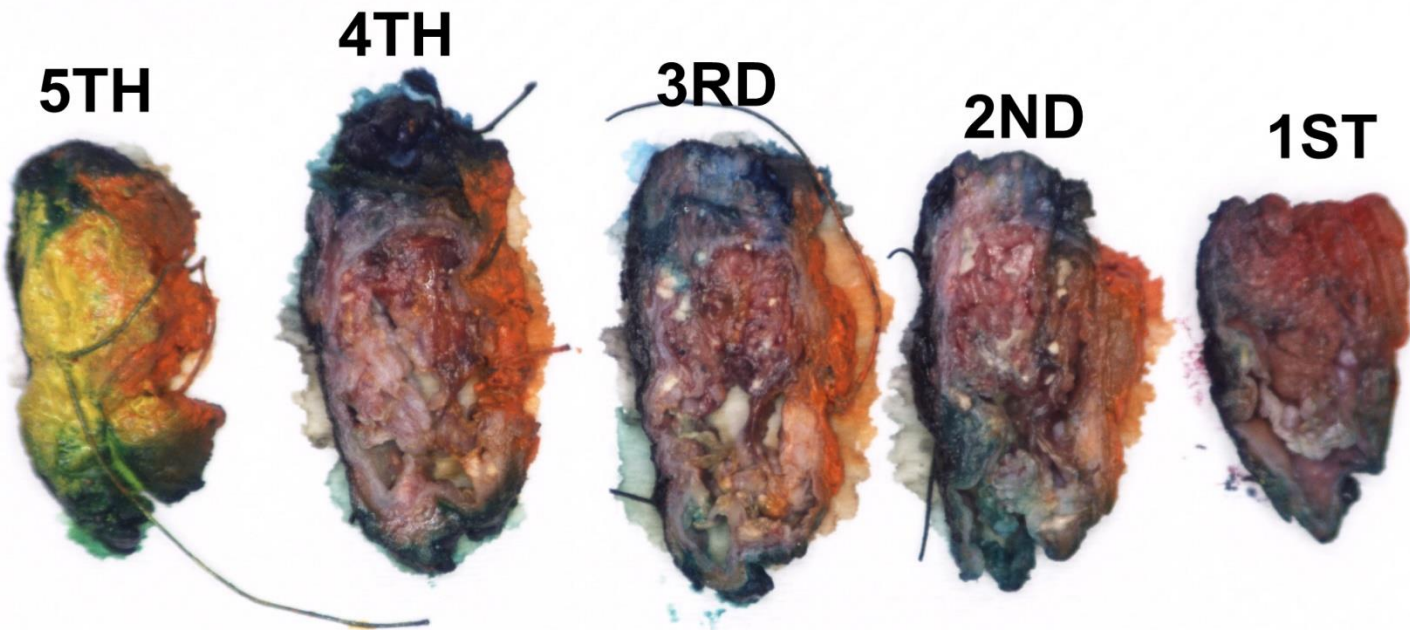


ER

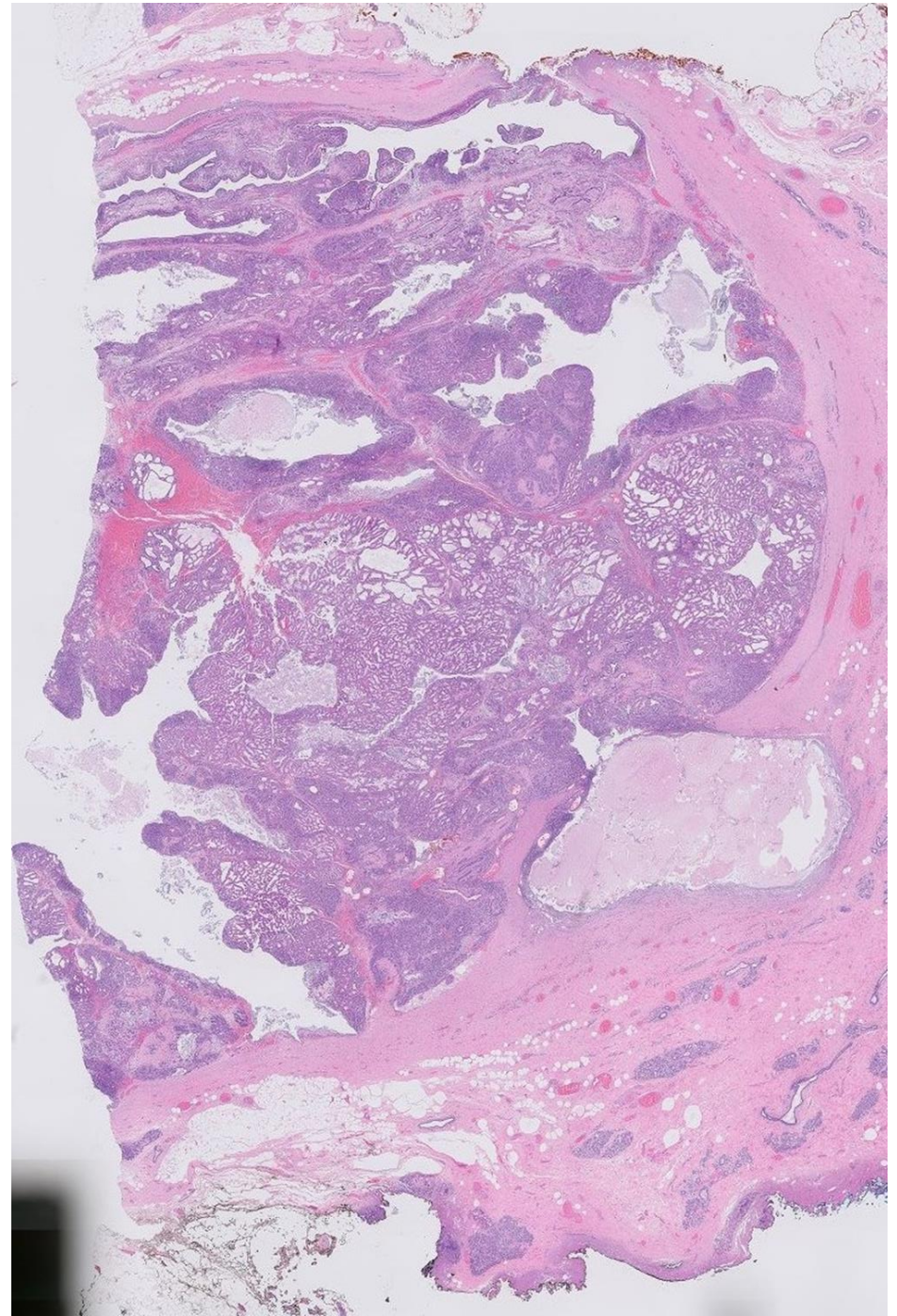
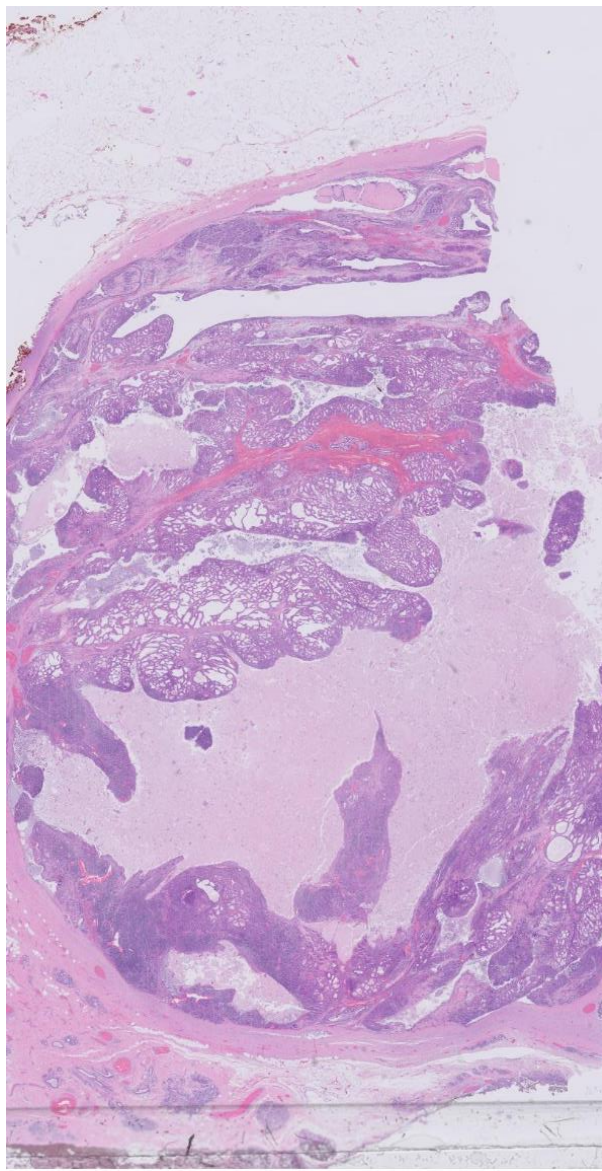
CK5

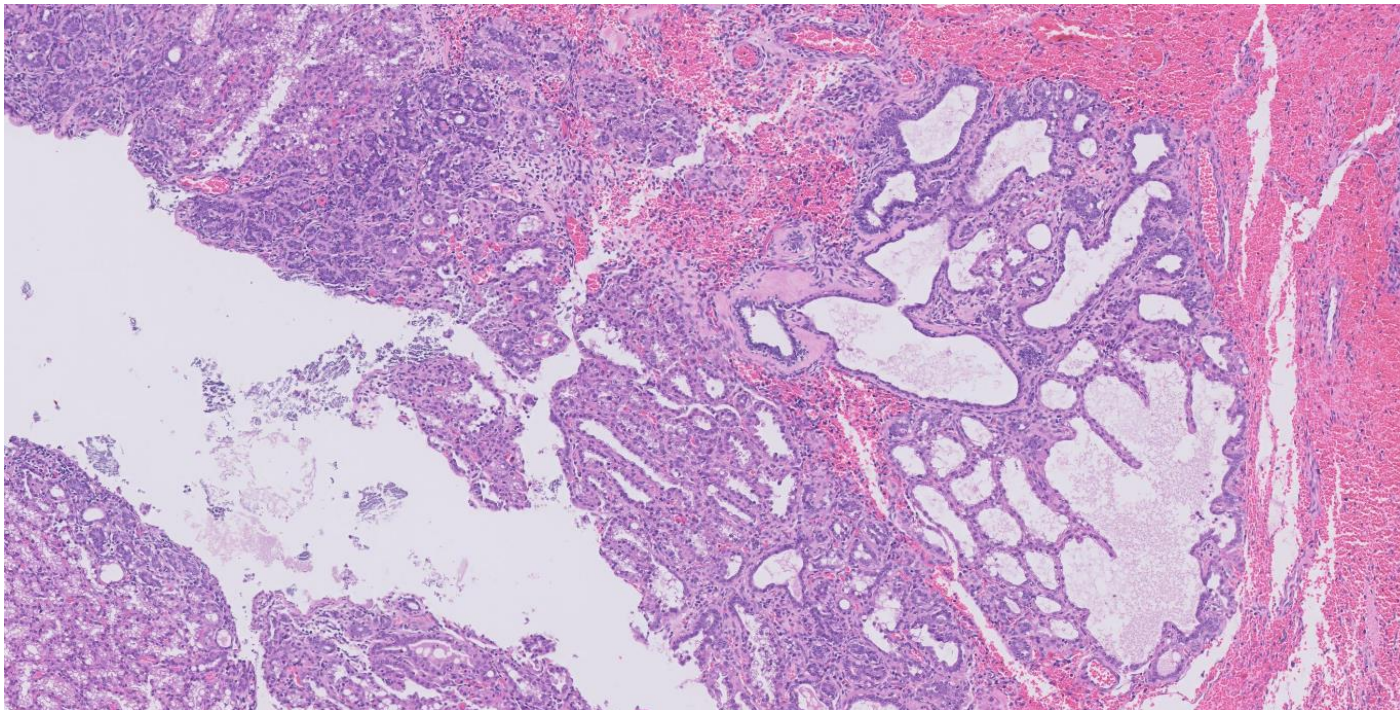
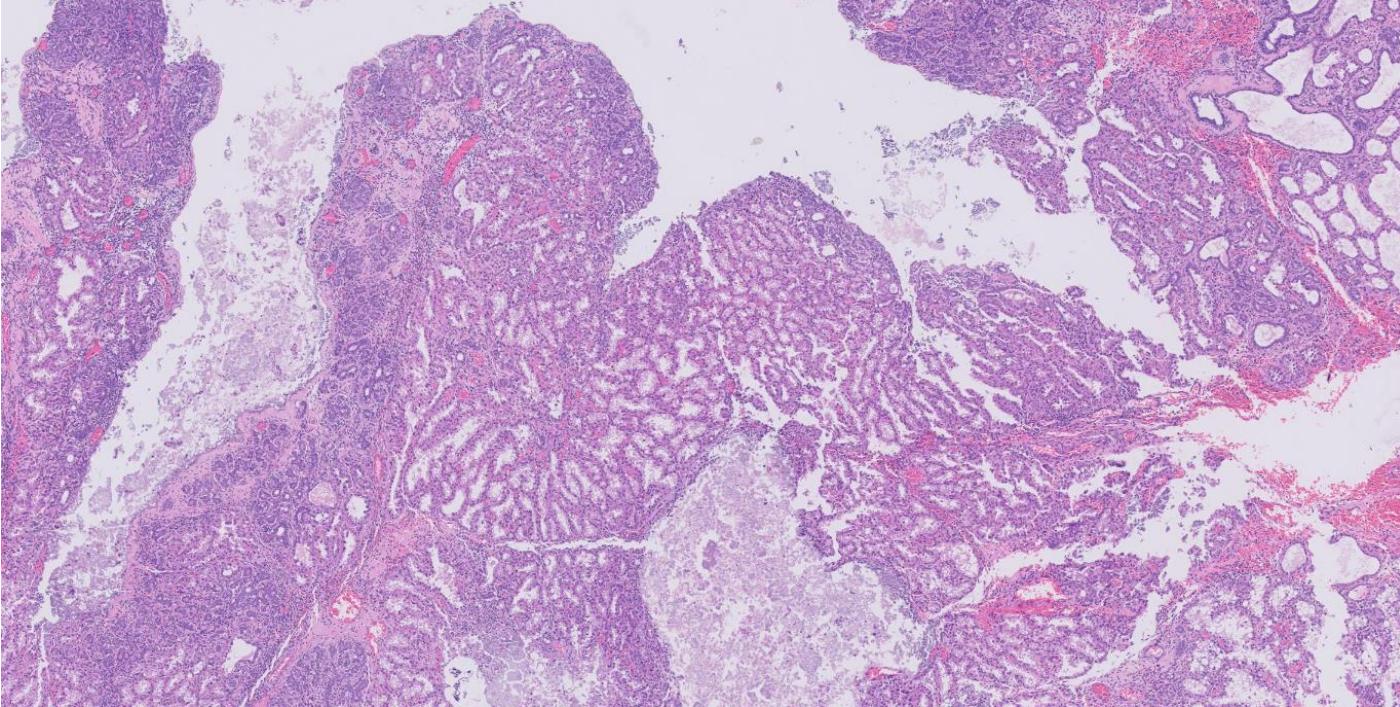
Diagnosis: Cellular FEL (B3).

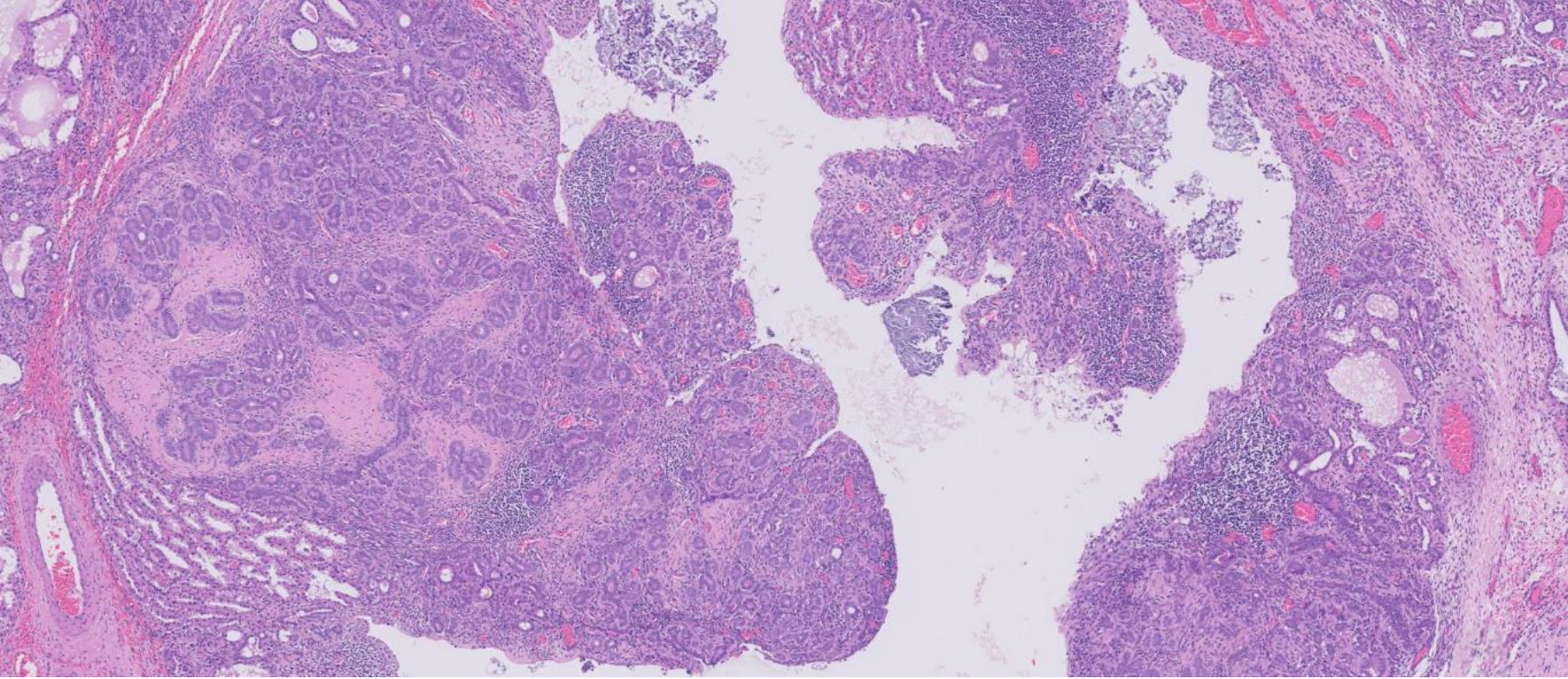
- As patient was pregnant it was decided to observe and excise the lesion post delivery.
- The lesion grew from 2.5 to 3 cm in the interval.

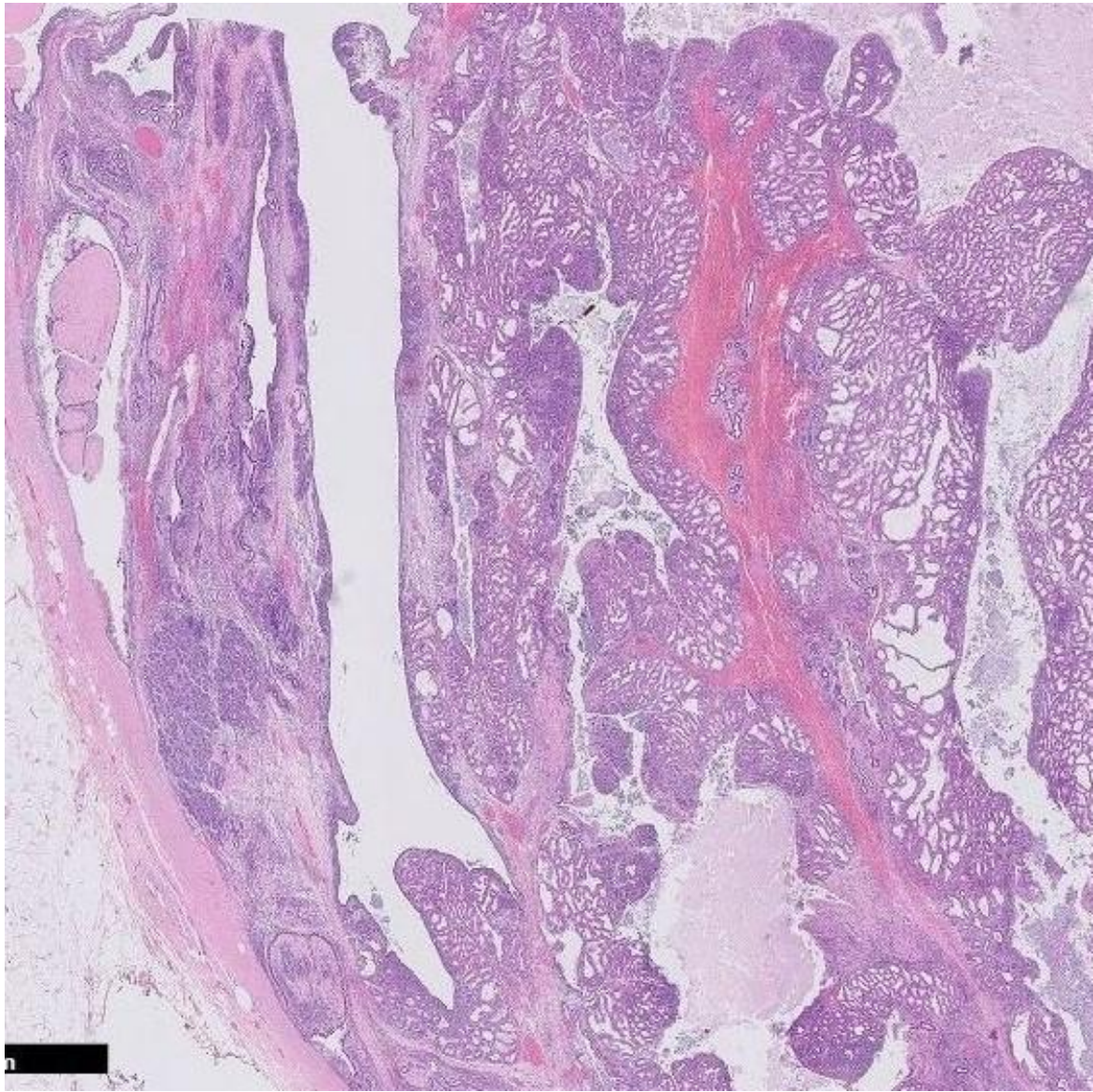


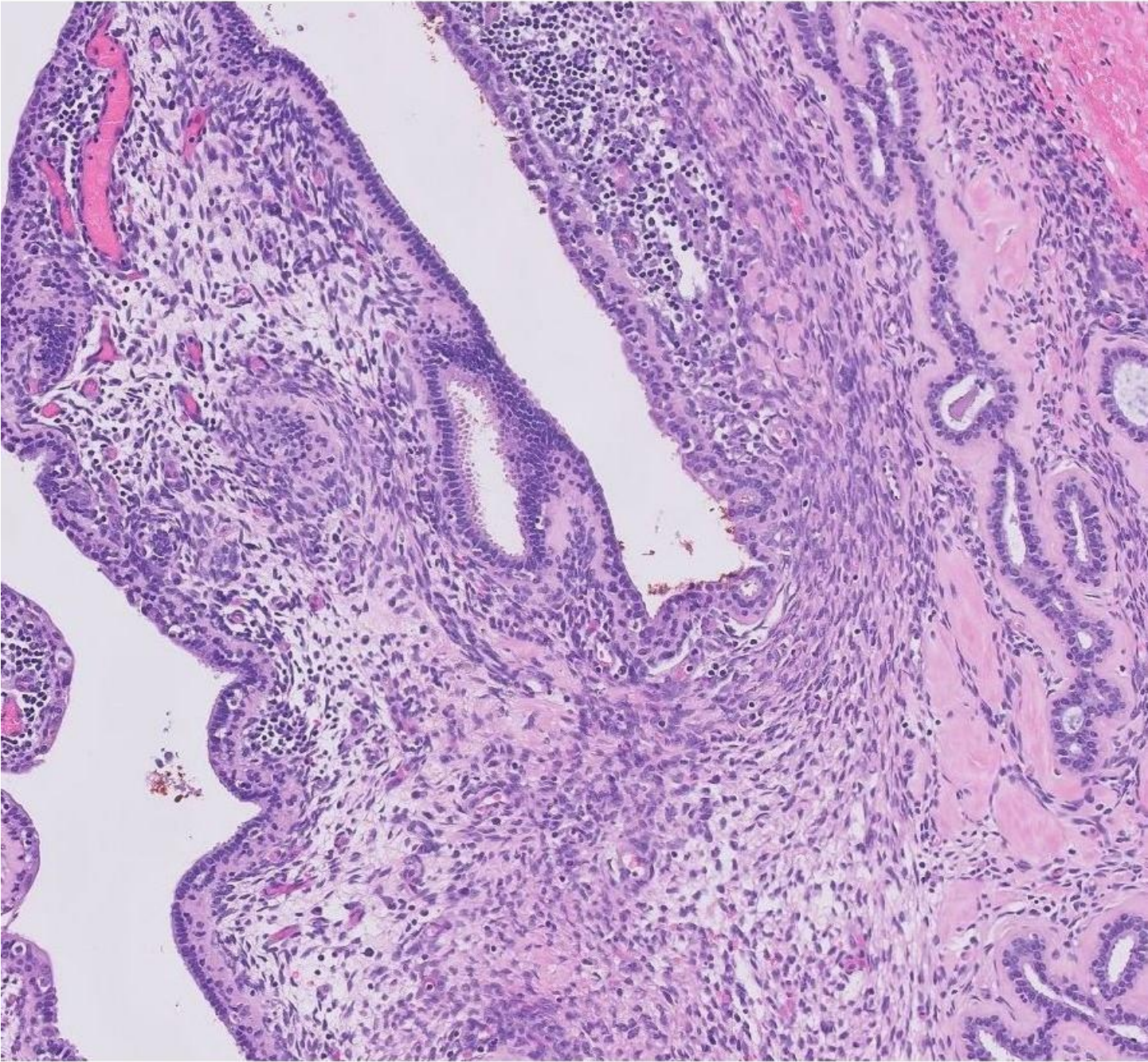
25 mm

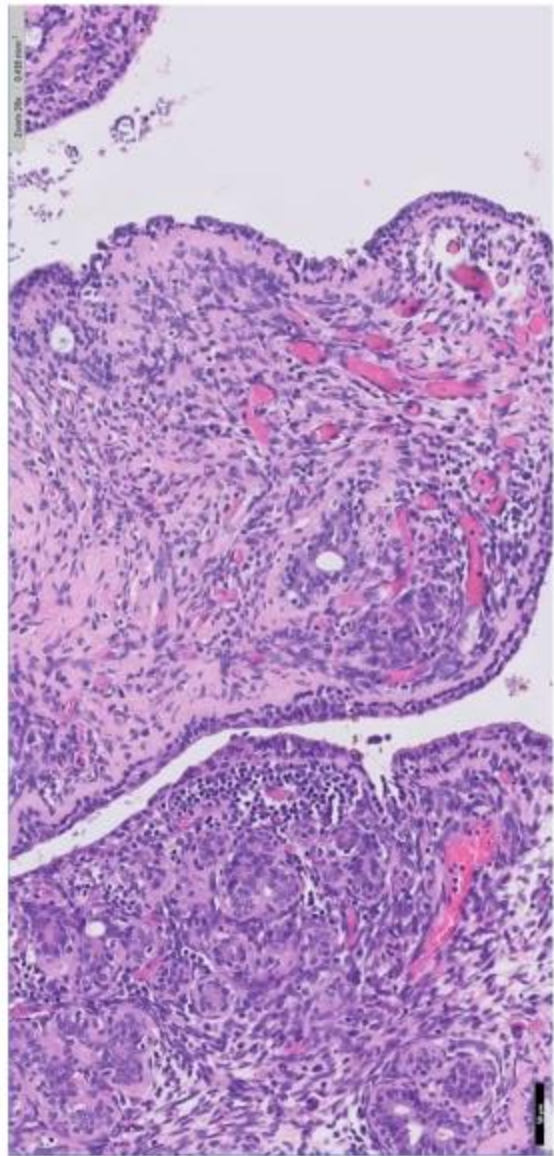
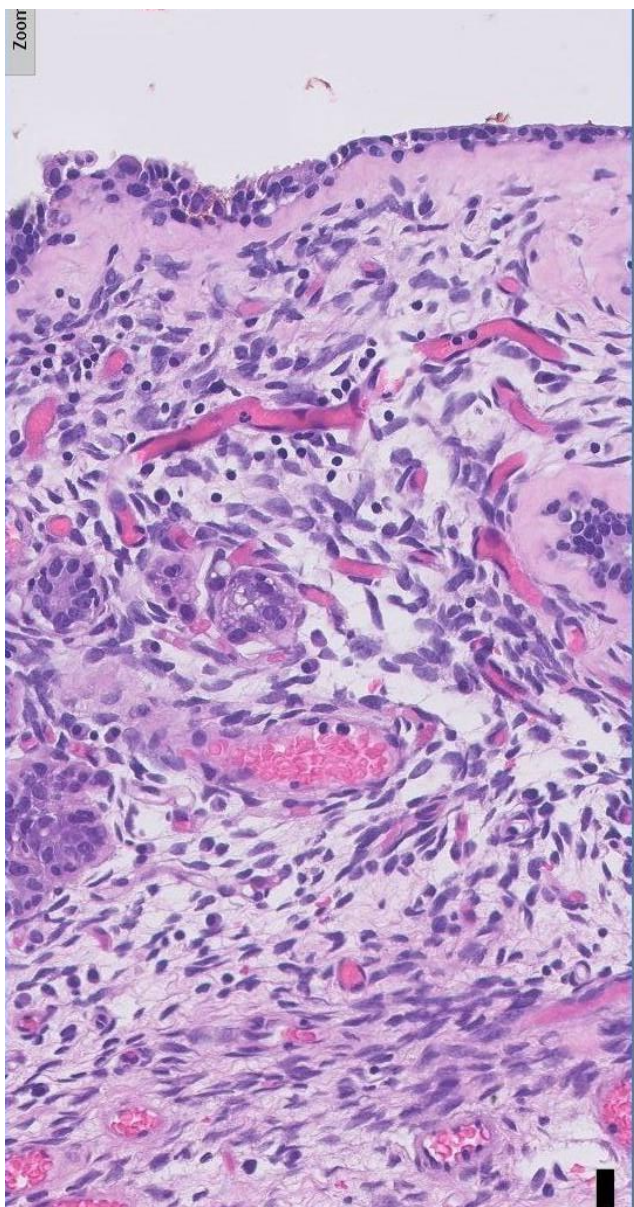
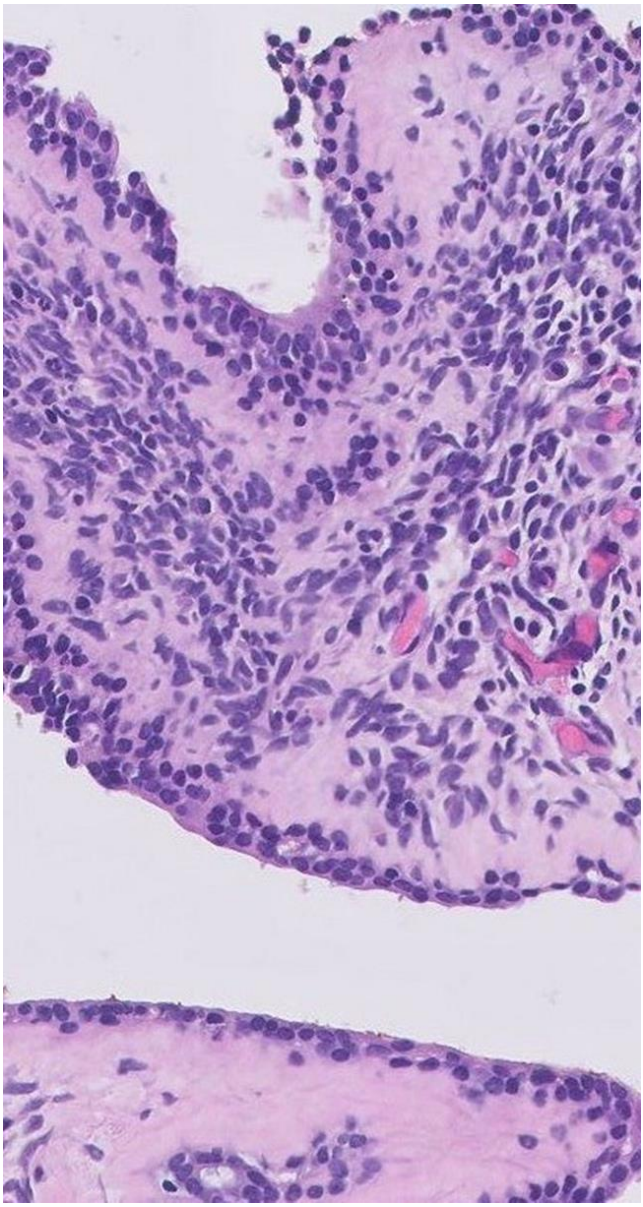


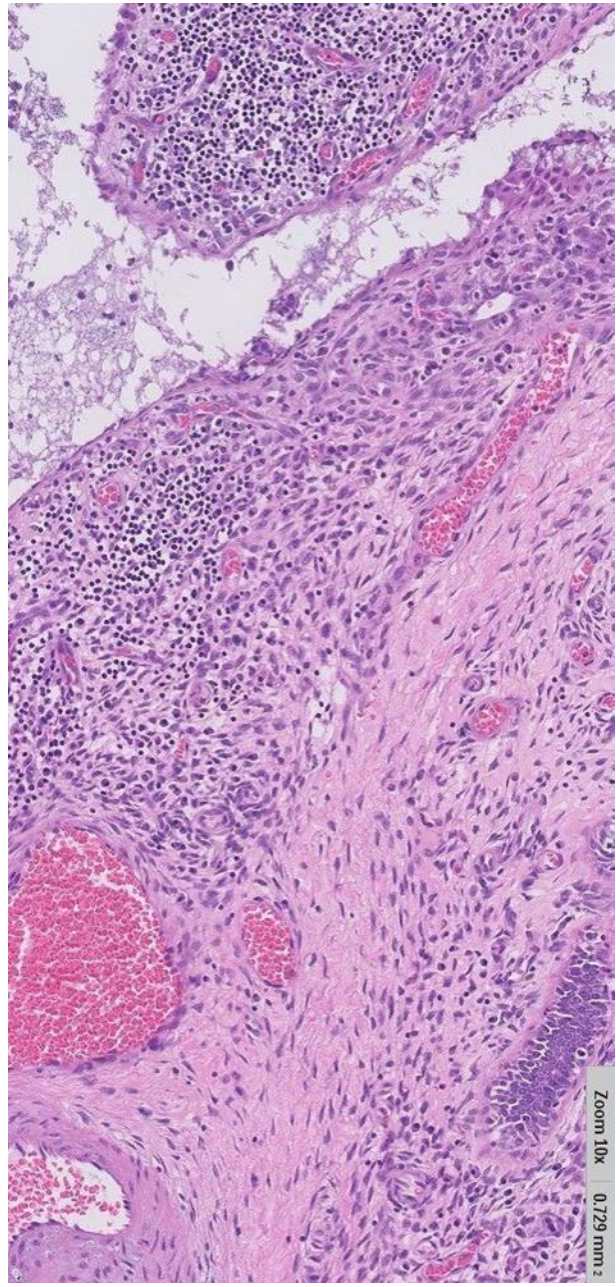
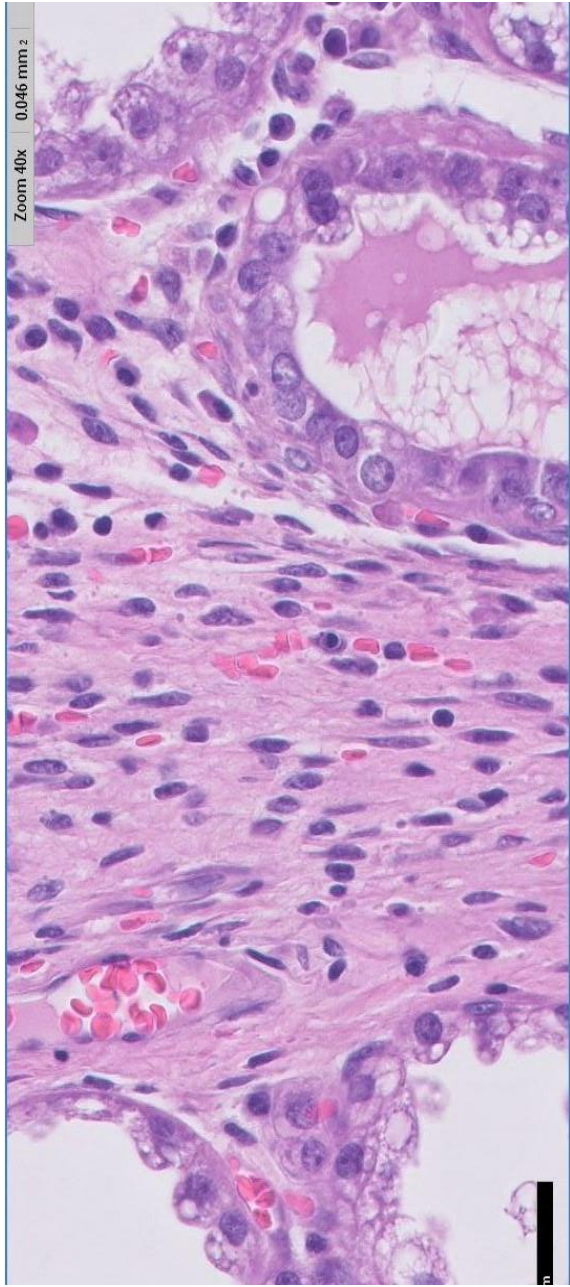
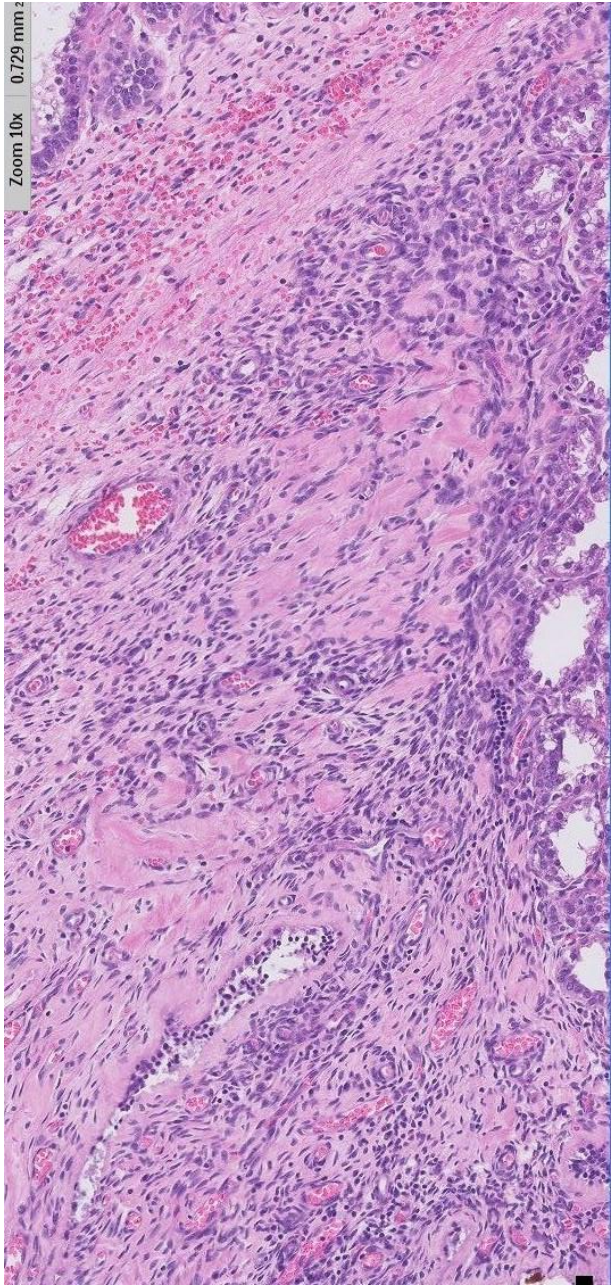




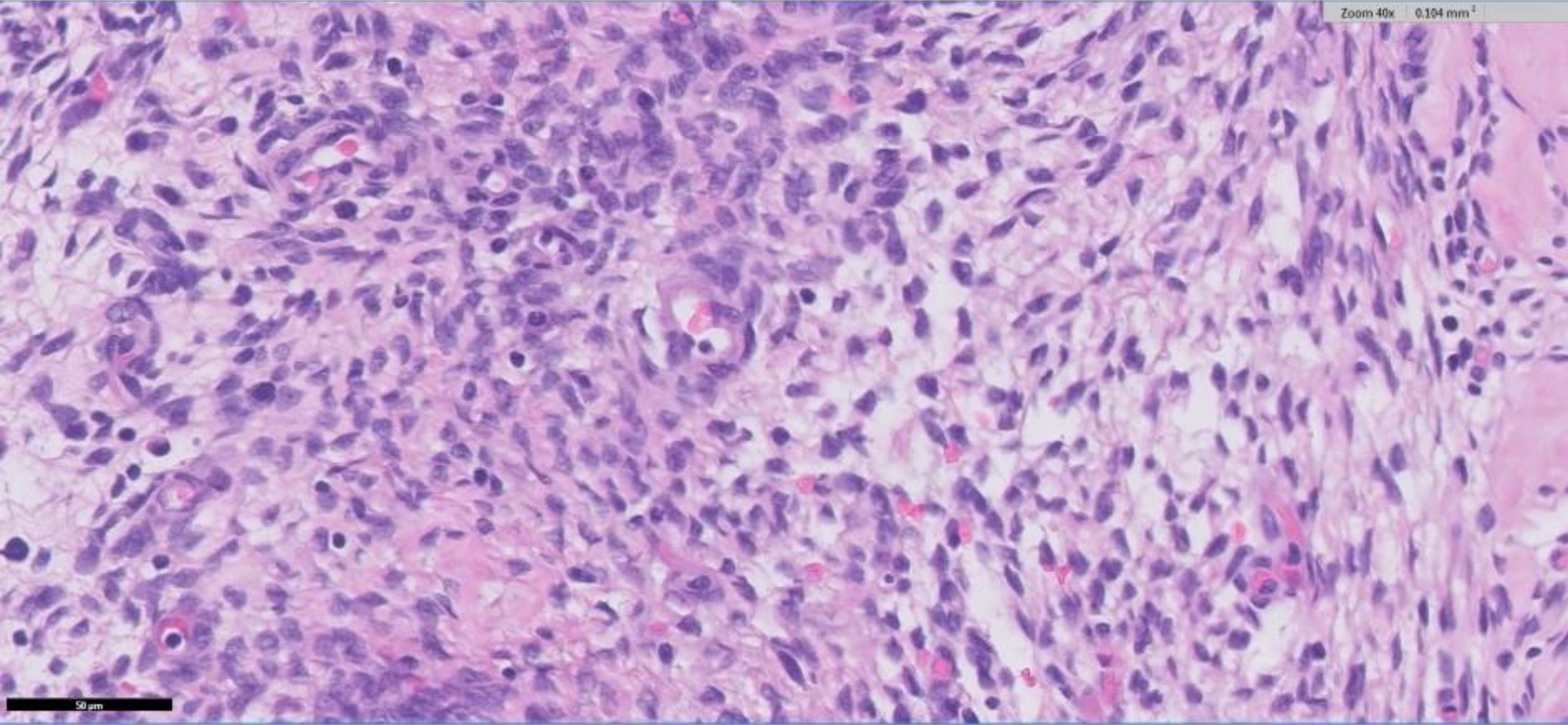




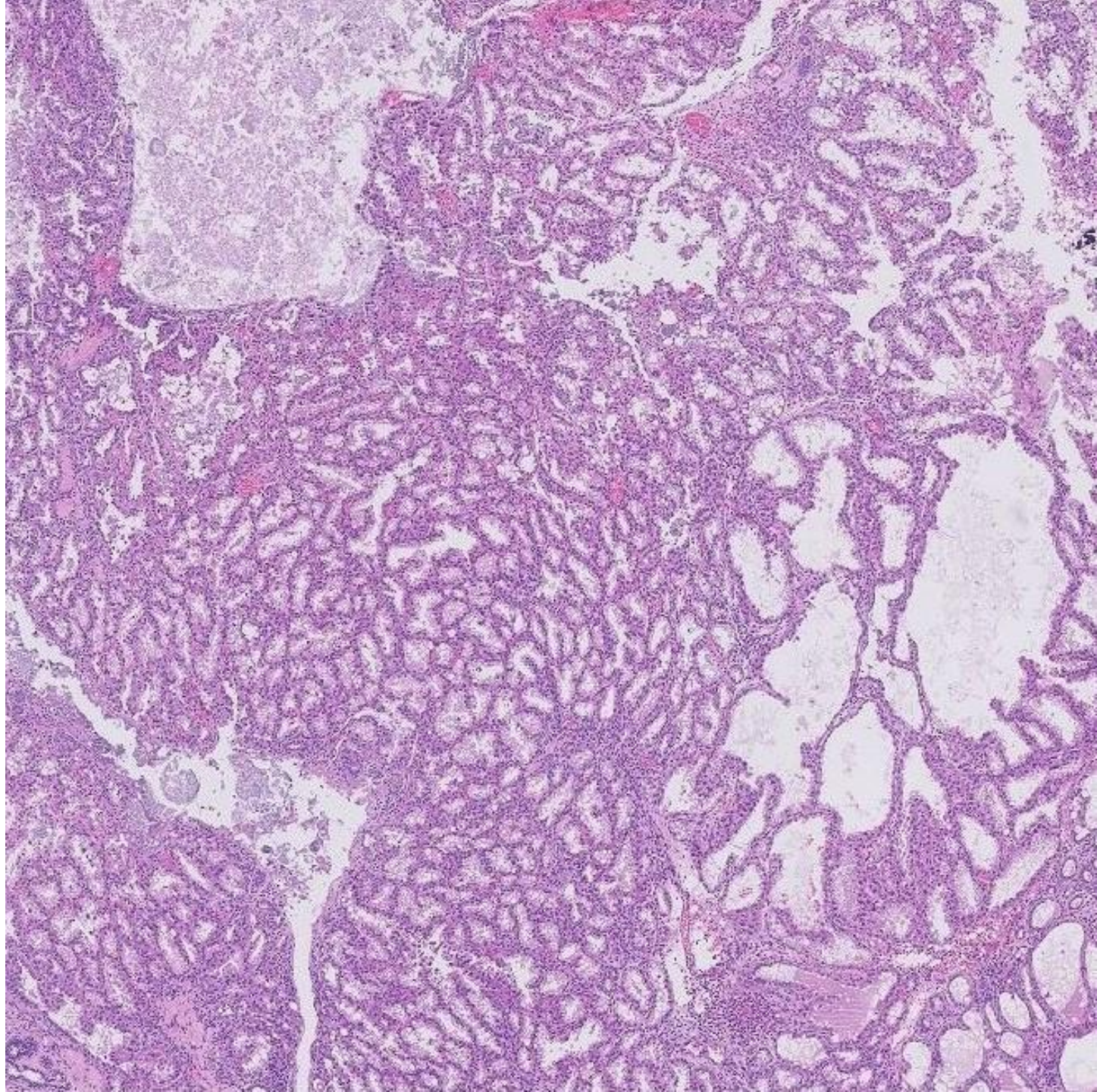


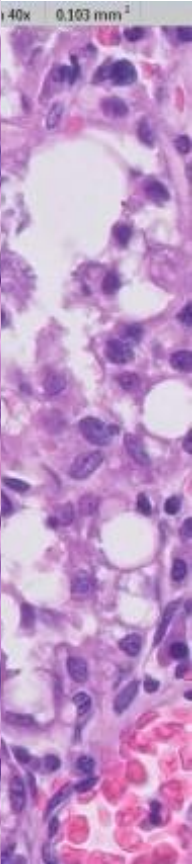
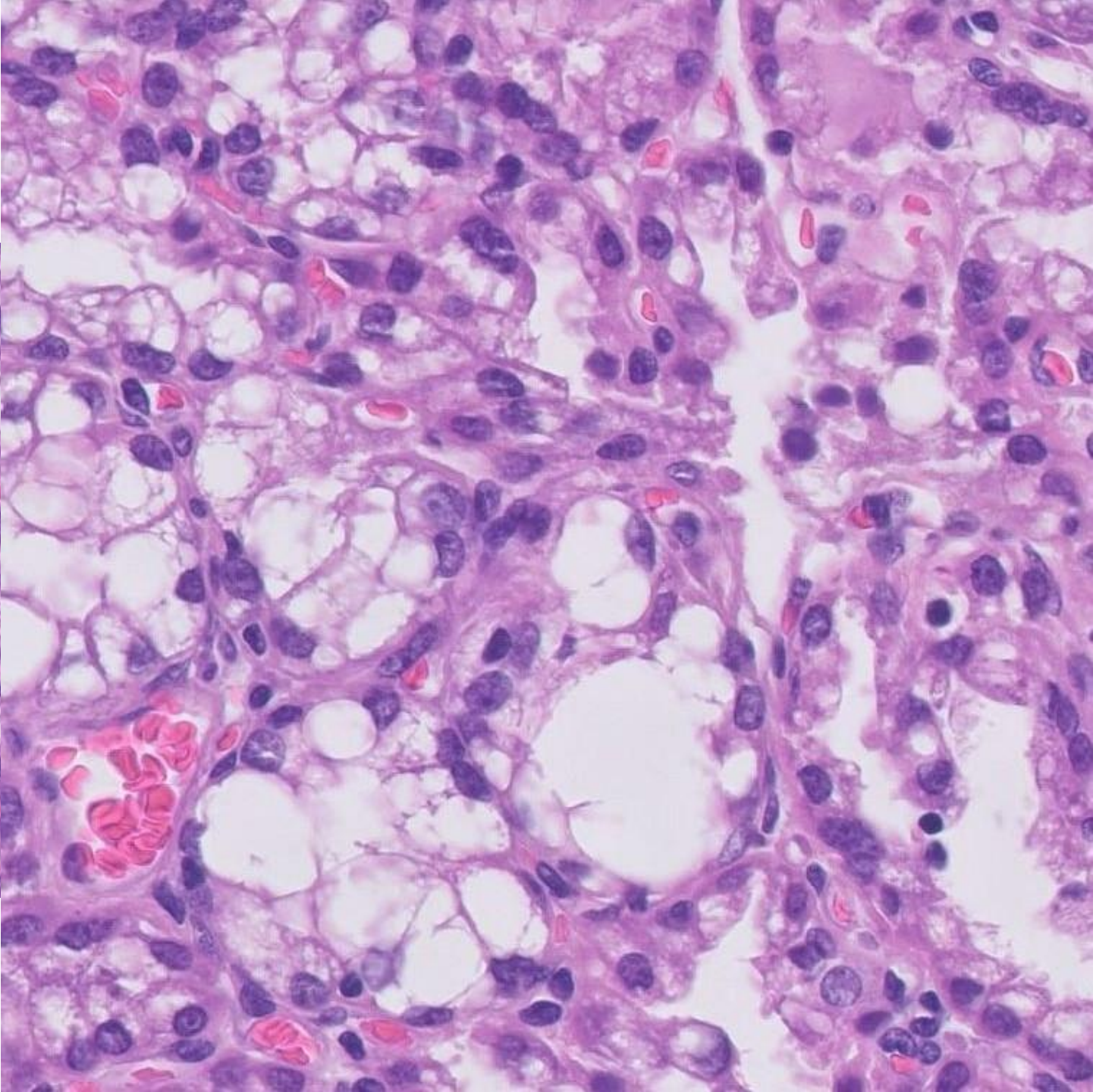
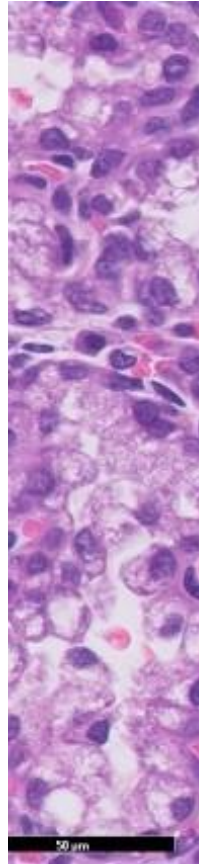


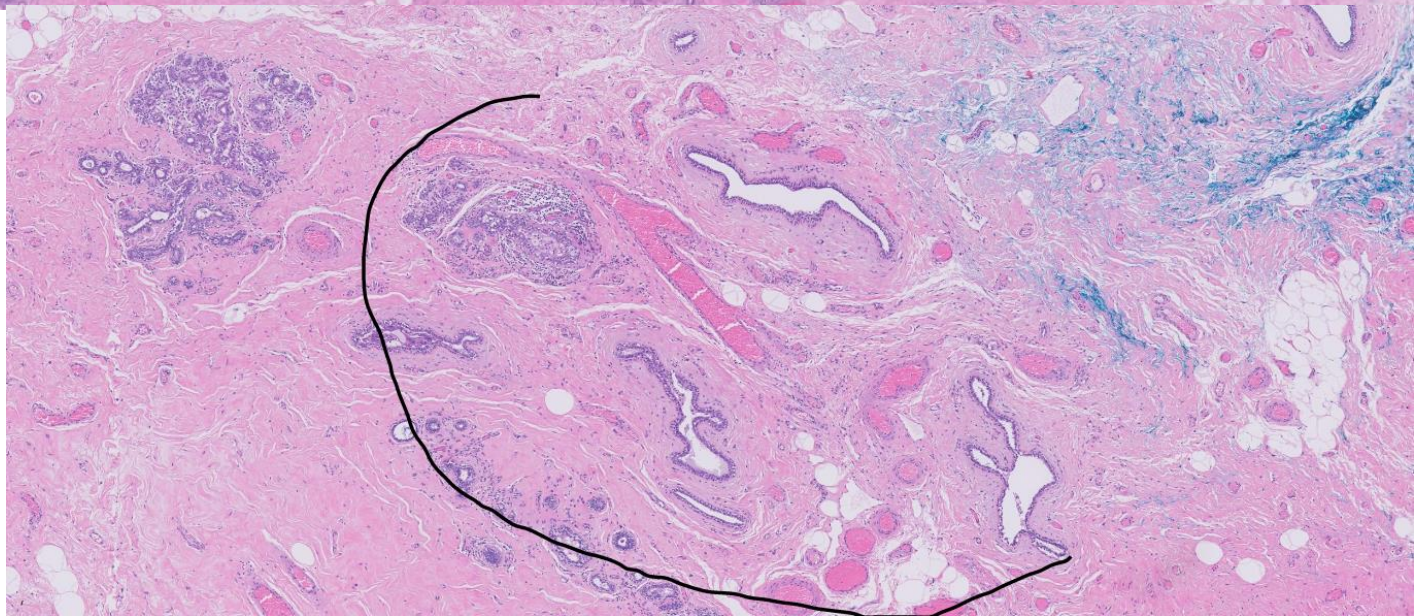
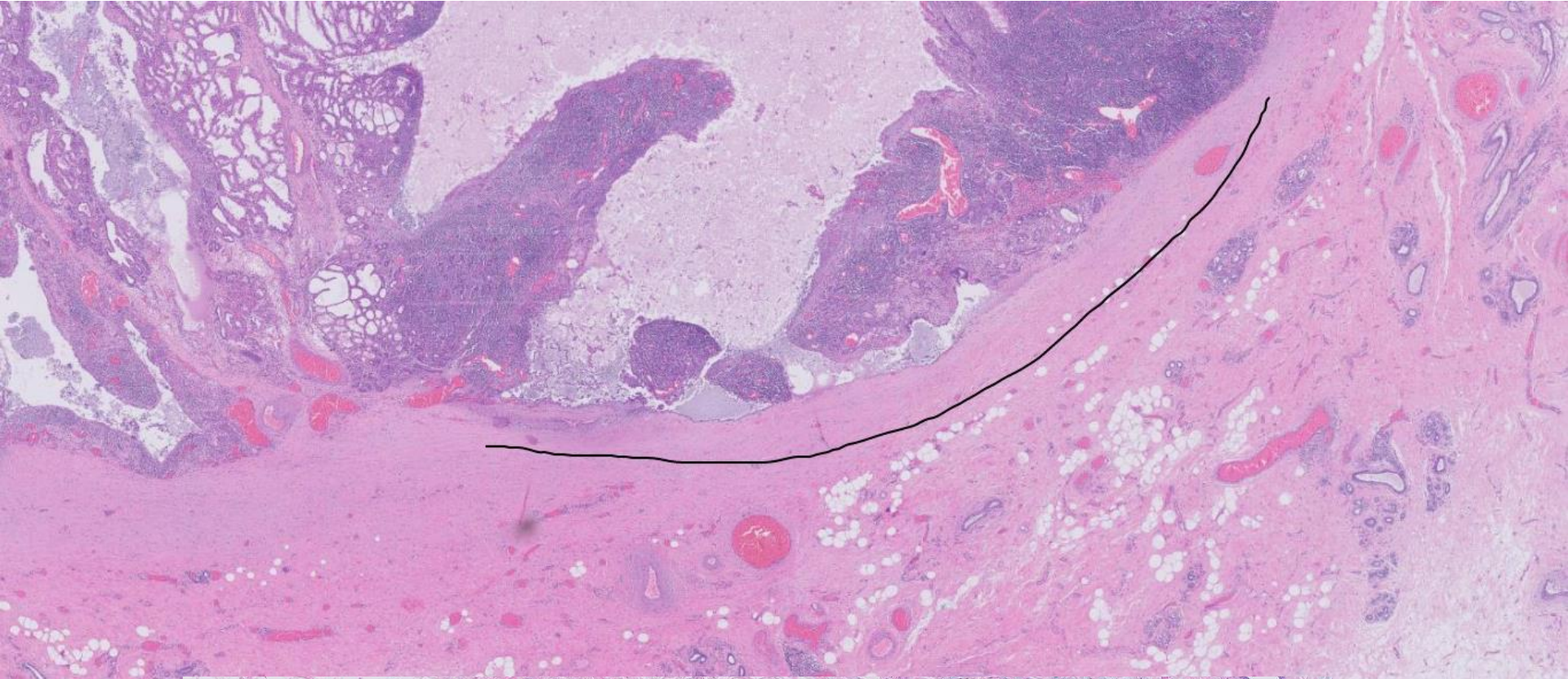
Zoom 40x 0.104 mm²



50 μm







Diagnosis

**Benign Phyllodes Tumour
with lactation changes.**

Phyllodes tumour in Pregnancy and Lactation

- Only 14 cases reported in literature as isolated case reports.
- In pregnancy these tumours occur at a slightly earlier age range (20-40 yrs) as opposed to (40-45 yrs) for usual PT.
- Tend to present in second trimester.
- Commonest presentation is a breast lump and this tends to grow in pregnancy. Association with increased levels of Oestrogen and Progesterone may be implicated but has been debated.
- Size doesn't seem to have a direct relationship with pathological type in gestation.
- Fast growth is commonly seen in most irrespective of type.
- Borderline and malignant PT appear to be commoner in pregnancy.
- Criteria for diagnosing Benign/ Borderline and Malignant PT are similar to Non gestational type.

Complications

- Rapid increase in size.
- Stretching of the overlying skin.

Management

- Similar to Conventional Phyllodes
- Surgery (Lumpectomy/Mastectomy) +/- adjuvant radio for malignant and borderline cases. Chemo?
- 1 cm free margin especially for the Borderline and Malignant types.

Differential Diagnosis

- Fibroadenoma with superimposed lactation/ pregnancy changes.
- Lactational adenoma.
- Borderline/ malignant Phyllodes with lactational change.

References

Summary of case reports of phyllodes tumours in pregnancy/ lactation

SL. NO	CASE REPORT	FINAL DIAGNOSIS
1	Likhitmaskul T et al., Gland Surgery. 2015;4(4):339–343.	Giant benign phyllodes tumor with lactating changes, left breast
2	Way JC, Culham BA. Canadian Journal of Surgery. 1998; 41(5):407–409.	Benign phyllodes tumor, right breast
3	Aranda C et al., Ginecol Obstet Mex. 2005 Jul; 73(7):387–392. Spanish.	Benign phyllodes tumor, right breast
4	Carvalho Jr. Ary Wanderley de,et al., Gravidez e Tumor Filodes Bilateral: Uma Associação Rara. Rev. Bras. Ginecol. Obstet. [Internet]. 1999 Mar 21(2): 109–111.	Bilateral benign phyllodes tumor
5	Andreola, João, Andréa Damin et al.,Journal of the Senologic International Society [Online], 1.3 (2012).	Borderline phyllodes tumor bilateral breast.
6	Furuya S et al., Nihon Rinsho Geka Gakkai Zasshi (Journal of Japan Surgical Association) Vol. 73 (2012) No 4, p 780–785.	Borderline phyllodes without lymphnode metastases, right breast
7	Karima Mrad,et al., Ann Diagn Pathol 4:370–372, 2000.	1. Malignant cystosarcoma phyllodes, left breast 2. Benign cystosarcoma phyllodes, right breast (Bilateral synchronous cystosarcoma phyllodes)
8	Nejc D et al., Int J Gynecol Cancer. 2008 Jul–Aug; 18(4):856–9. Epub 2007 Sep 24.	Malignant cystosarcoma phyllodes, left breast
9	Blaker KM et al., Am Surg. 2010 Mar; 76(3):302–305.	Malignant phylloides tumor, right breast
10	Ray S,et al., Iranian Journal of Medical Sciences. 2011;36(4):315–317.	Malignant phylloides tumor right breast with coincidental nulliparous prolapse.
11	Pytel J et al., Przegląd Menopauzalny 2009;6: 331–333 (Polish).	Malignant phyllodes tumor, left breast
12	Simpson SA et al., images of a case. Breast J. 2007 Nov–Dec; 13(6):620–621.	Malignant phyllodes
13	Sharma JB,et al. Eur J Obstet Gynecol Reprod Biol. 2004 Aug 10;115(2):237–239.	Unilateral phylloides tumor with rapid growth during pregnancy
14	Abdelkrim SB et al., World Journal of Oncology, Vol. 1, No. 3, Jun 2010.	Single case of phyllodes tumor diagnosed during pregnancy. (No other details found)

Thank You

