

Case 6

68 year old Chinese female.

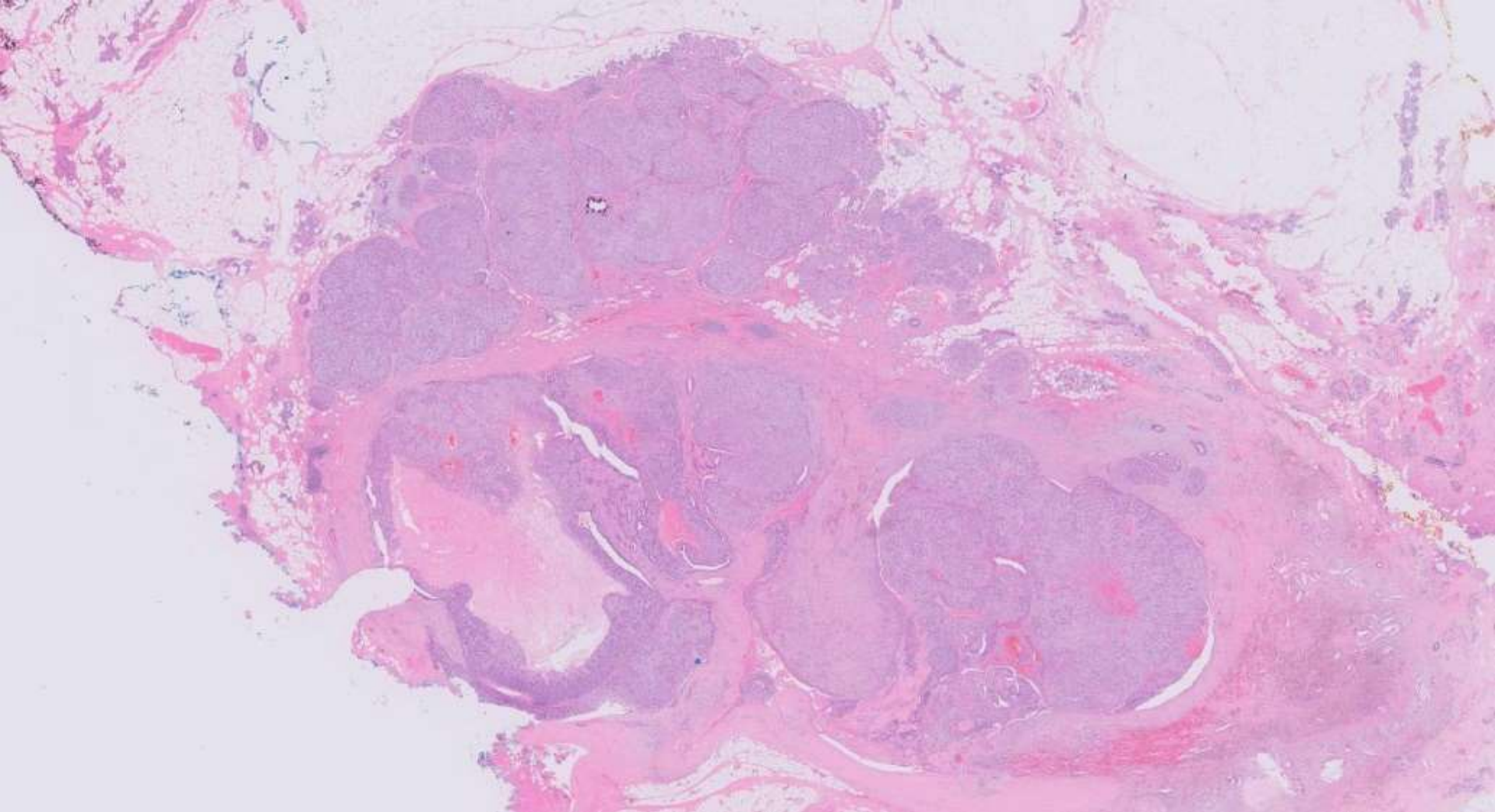
Palpable left breast lump in the UOQ.

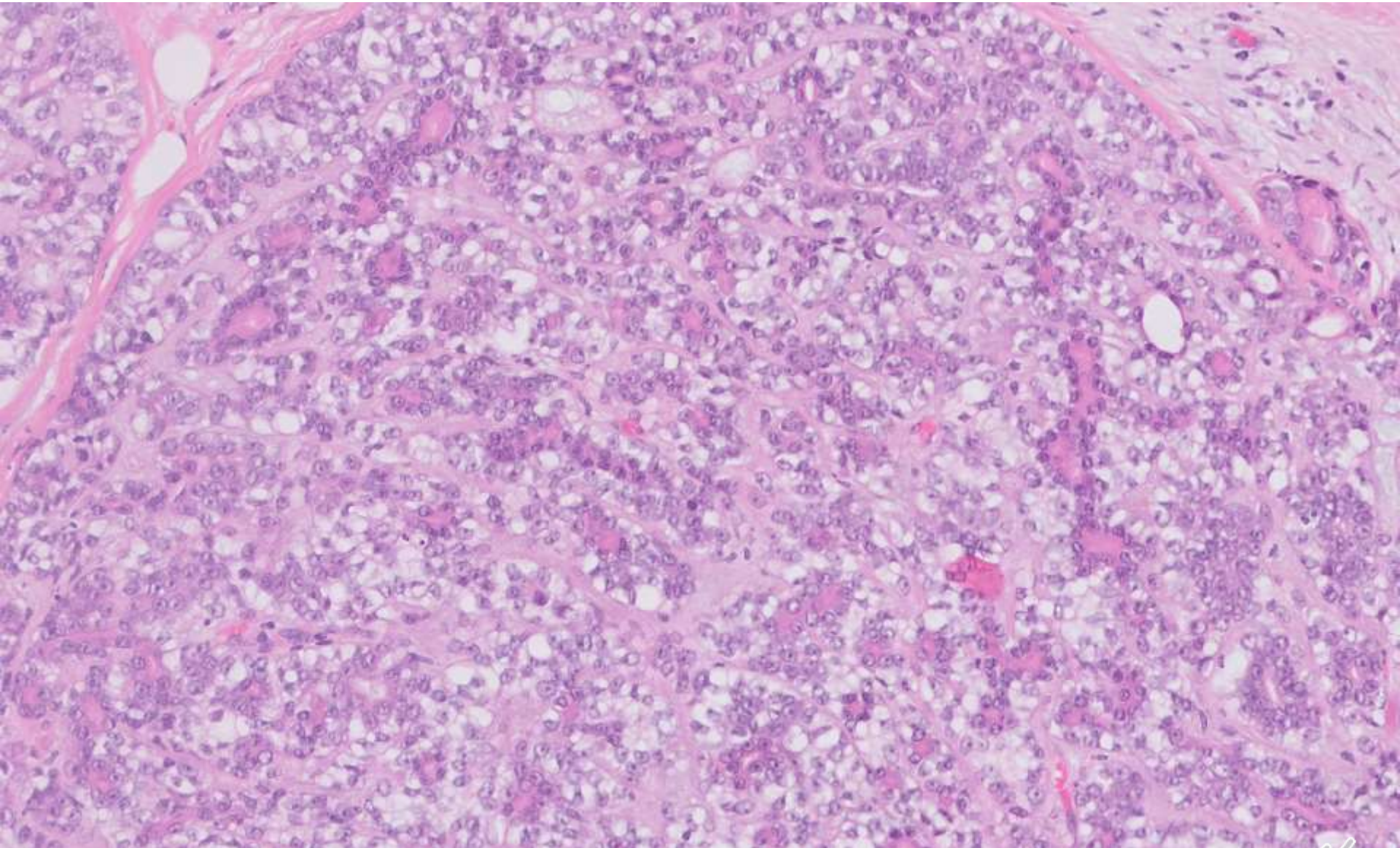
Mammographic lobulated density 29x23x22mm
with pleomorphic calcifications.

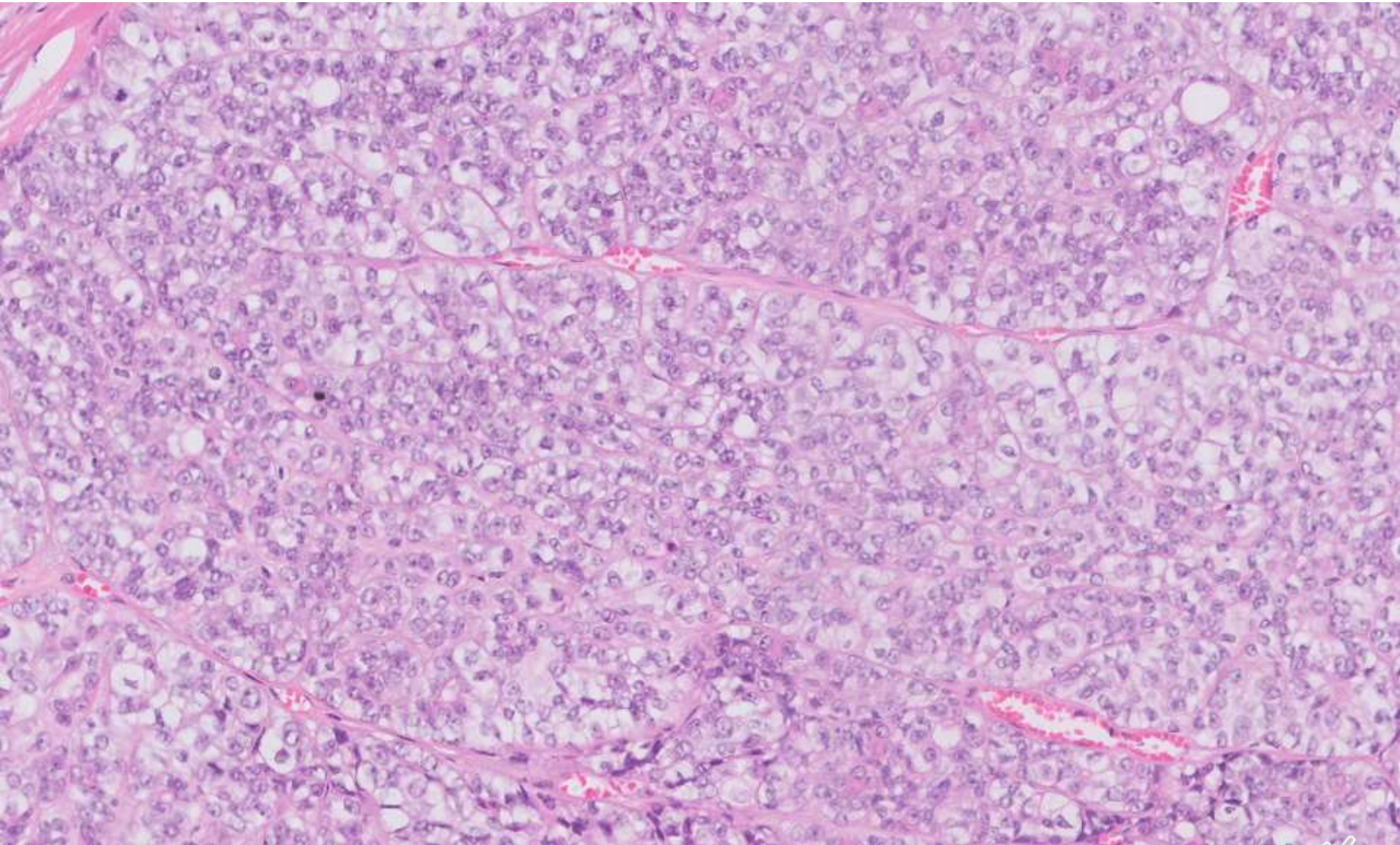
US showed irregular solid-cystic lesion with partly
ill-defined borders measuring 23x19x26mm.

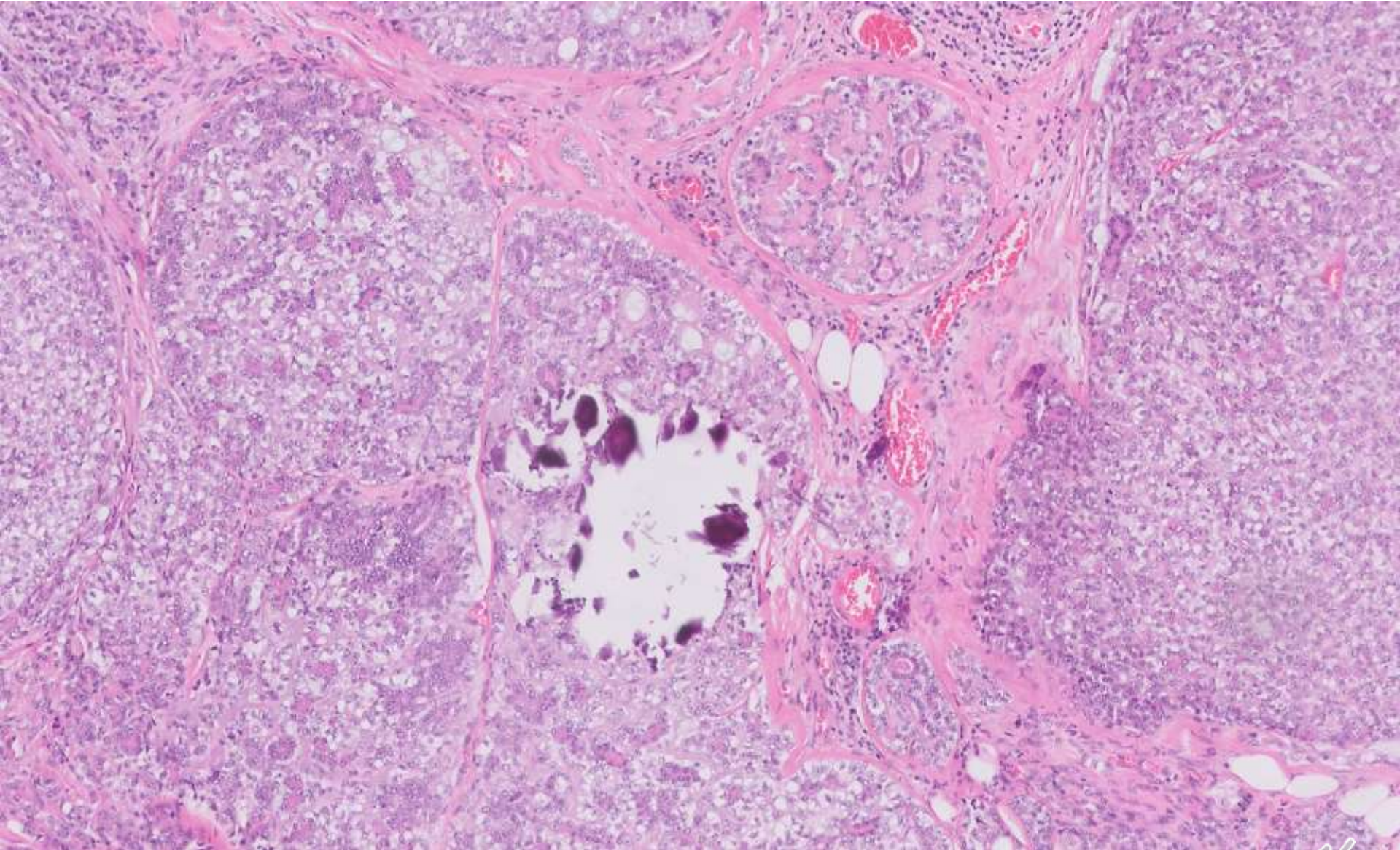
Presented by Timothy Tay

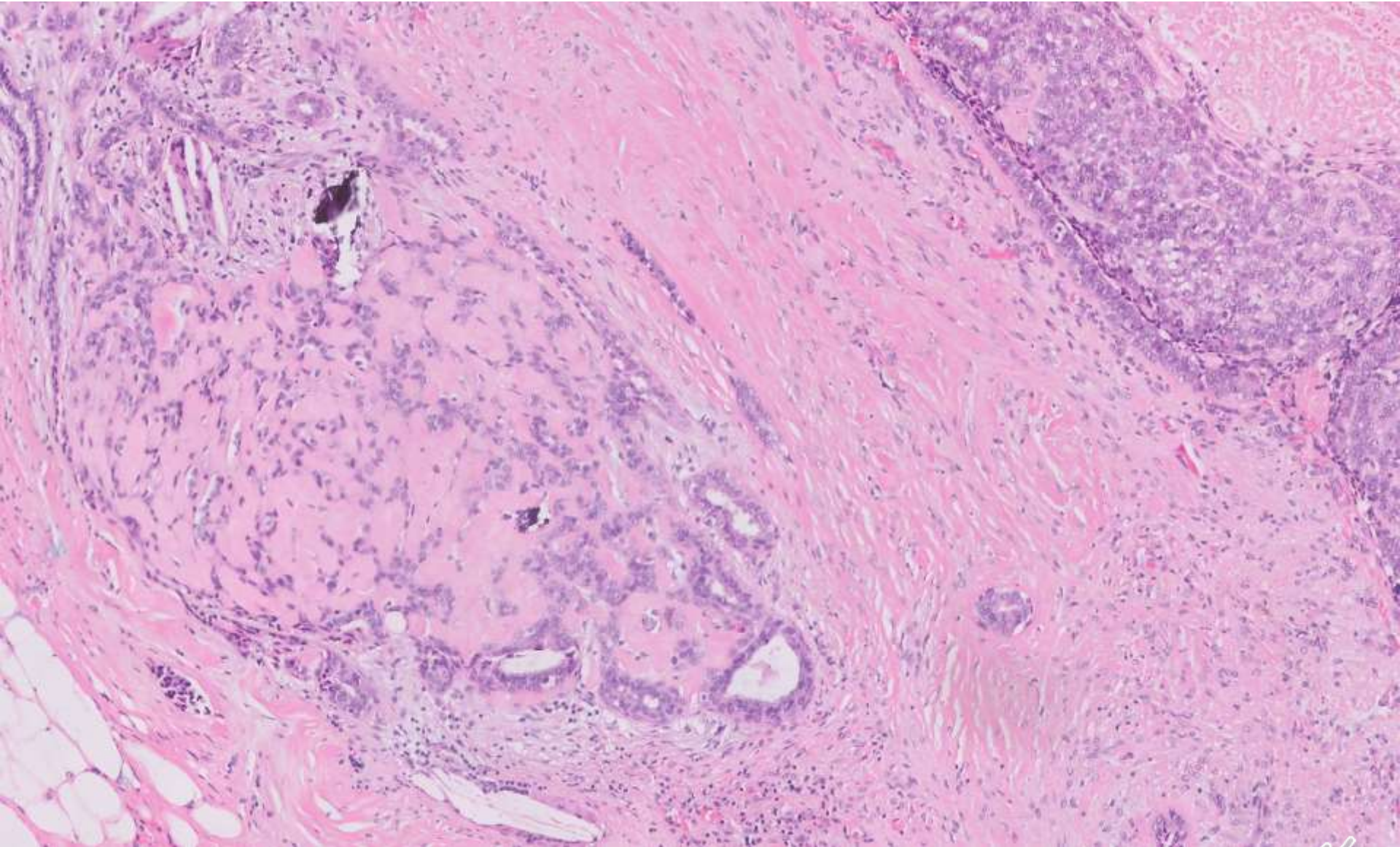


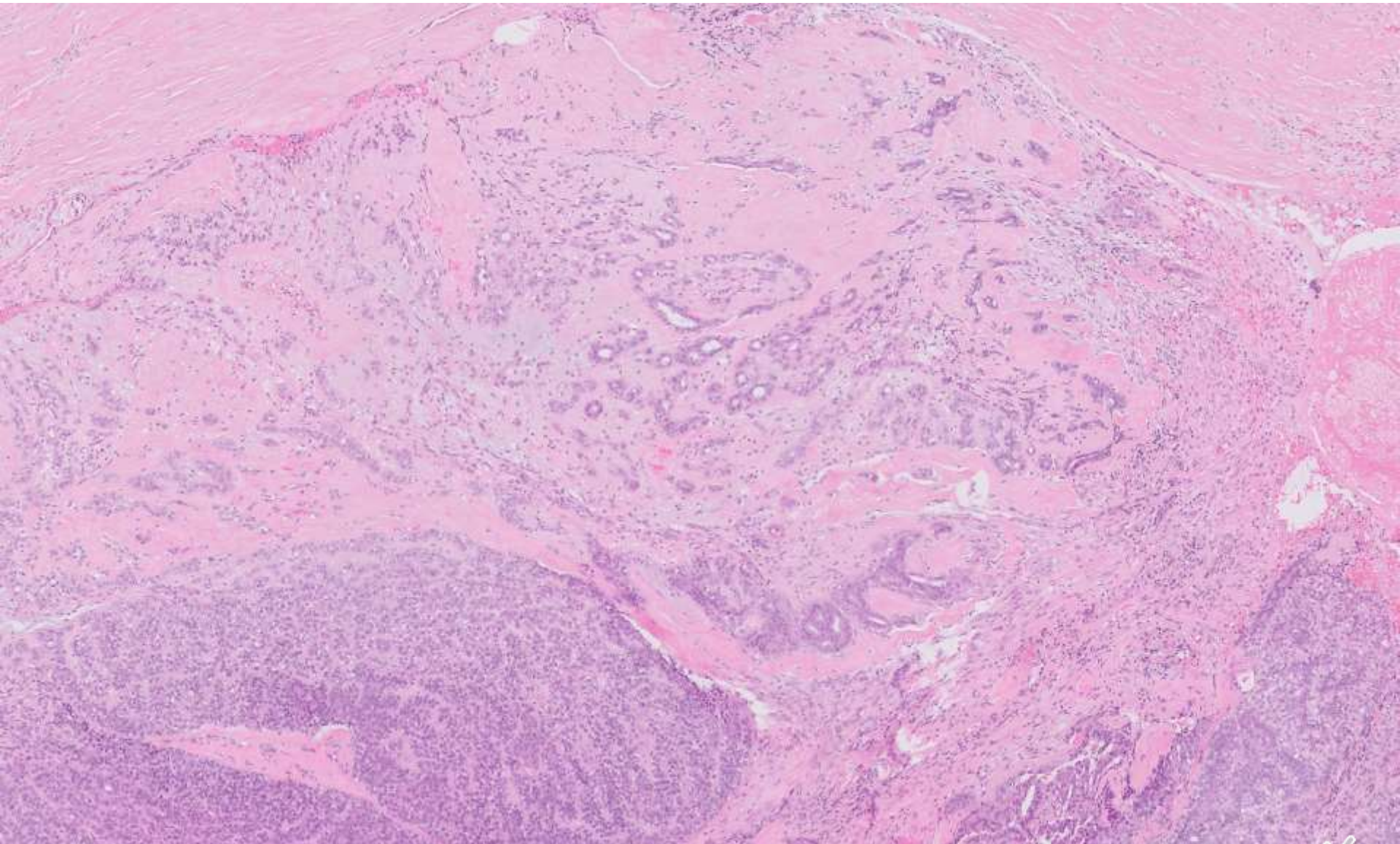


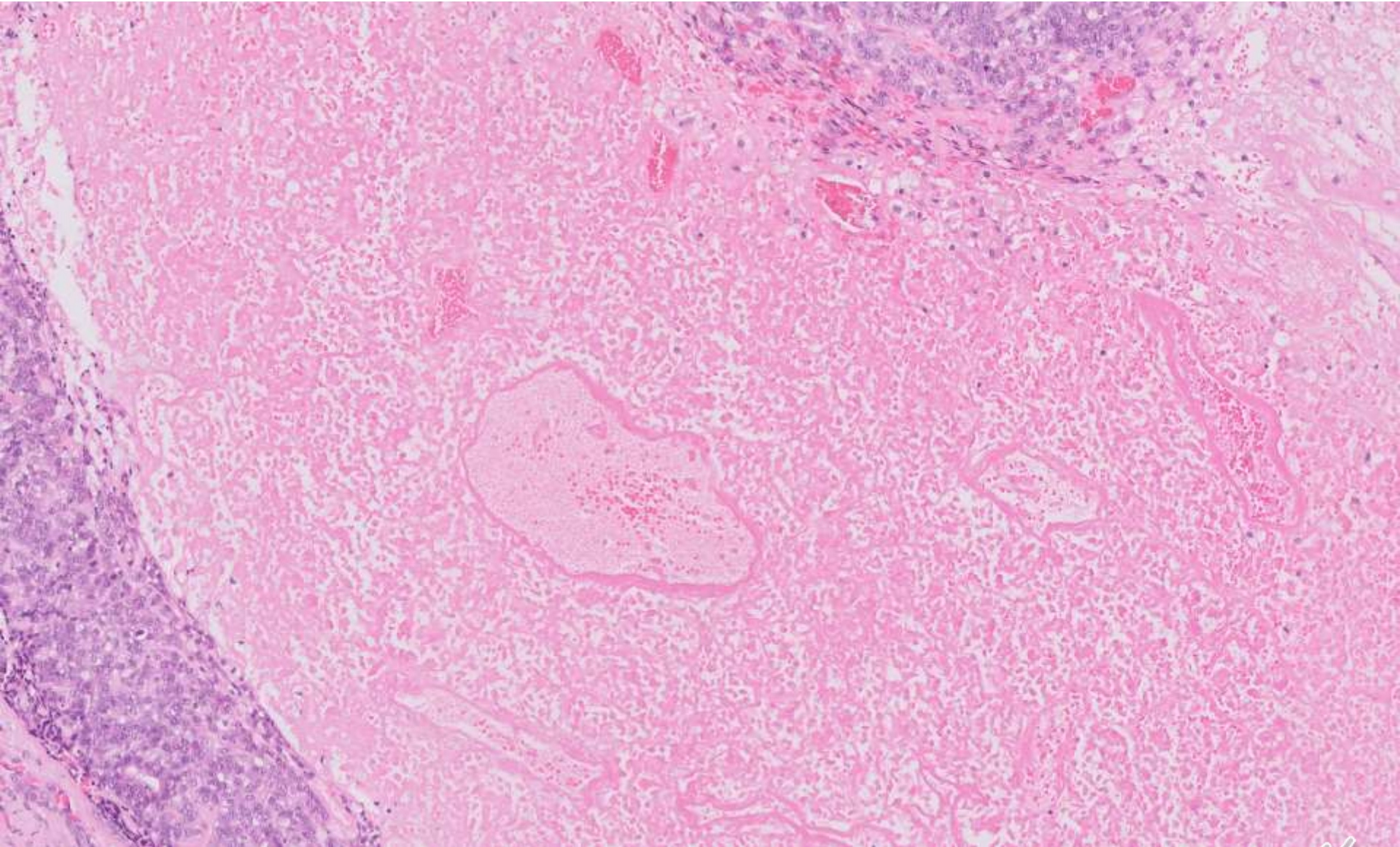


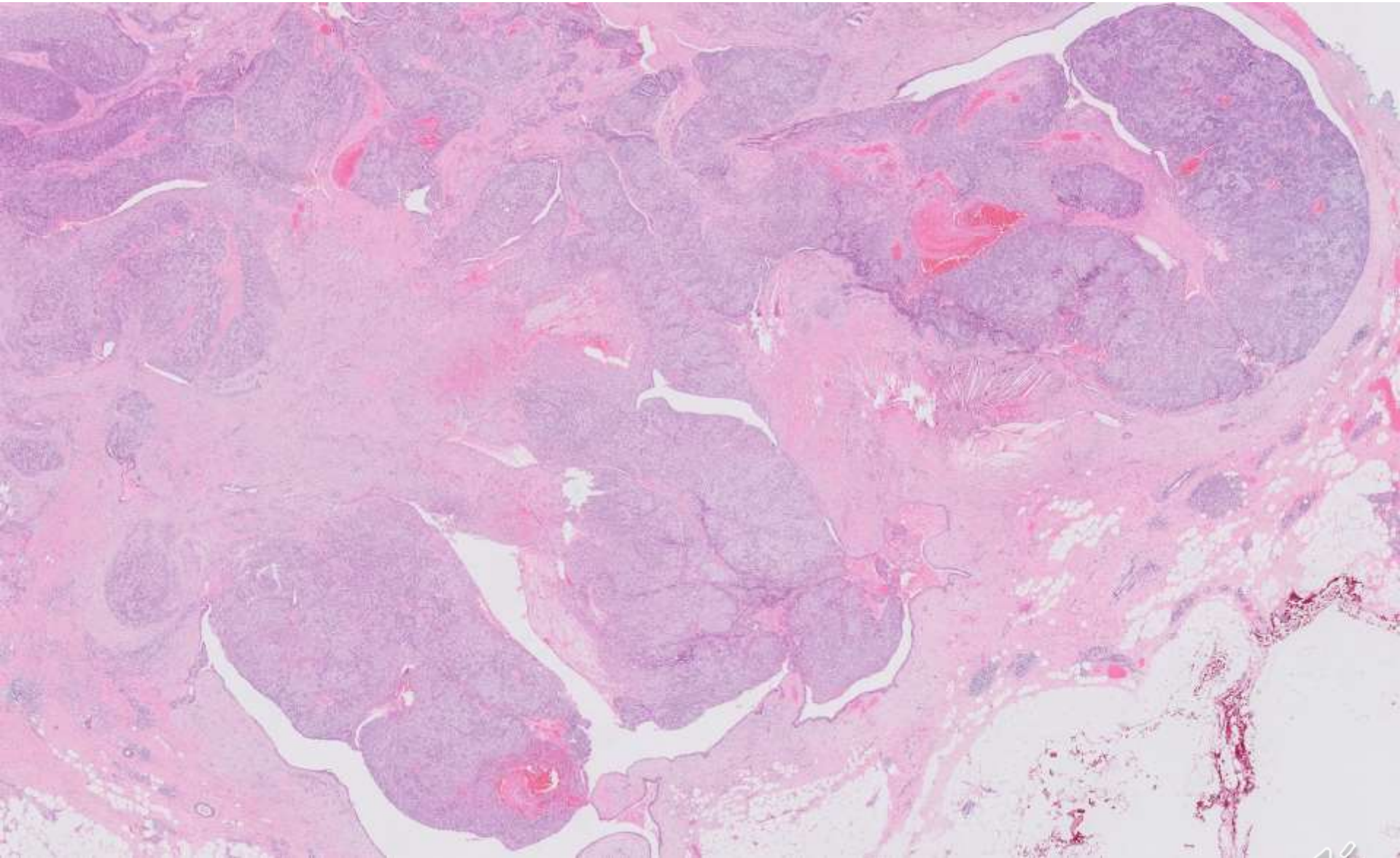


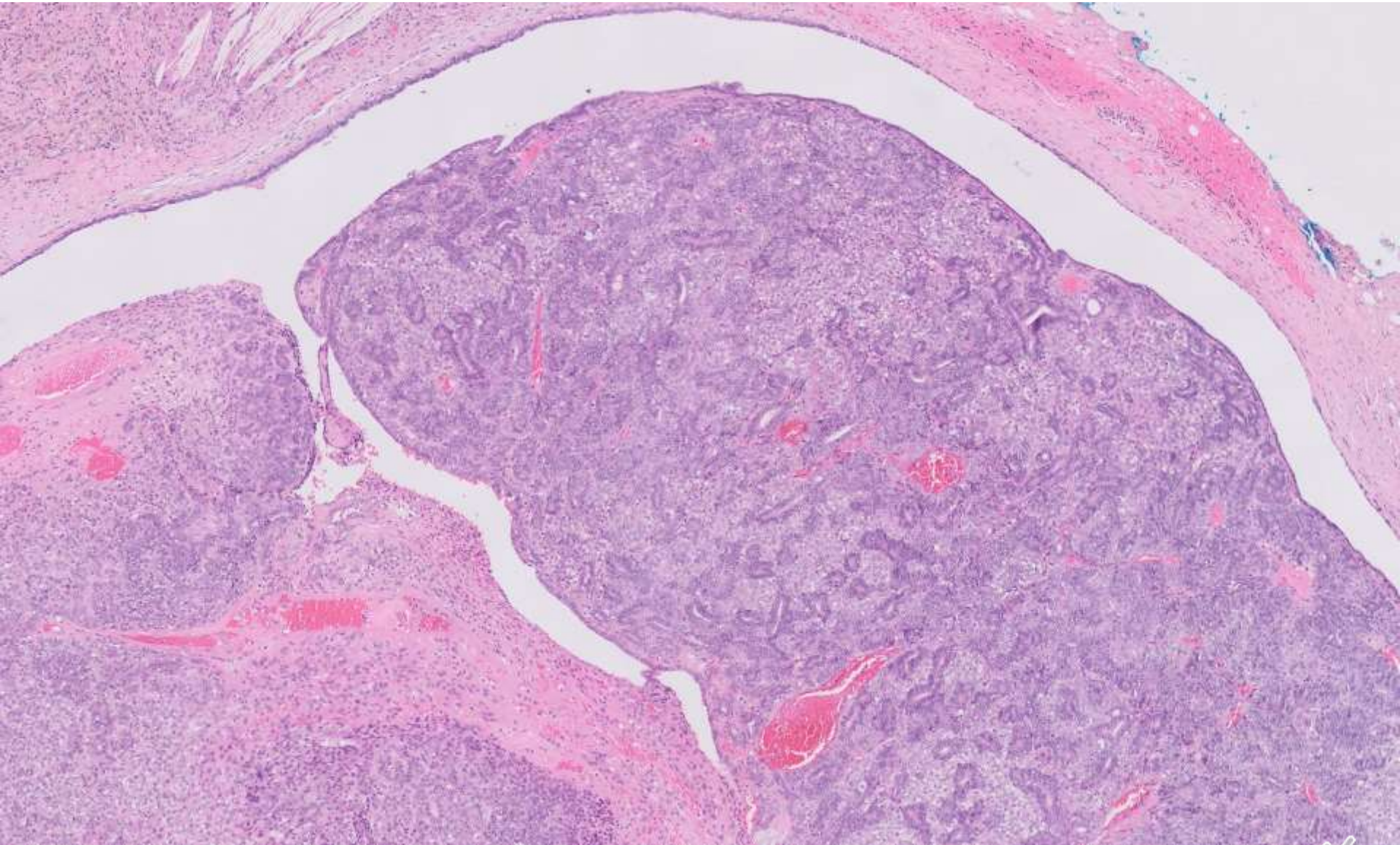


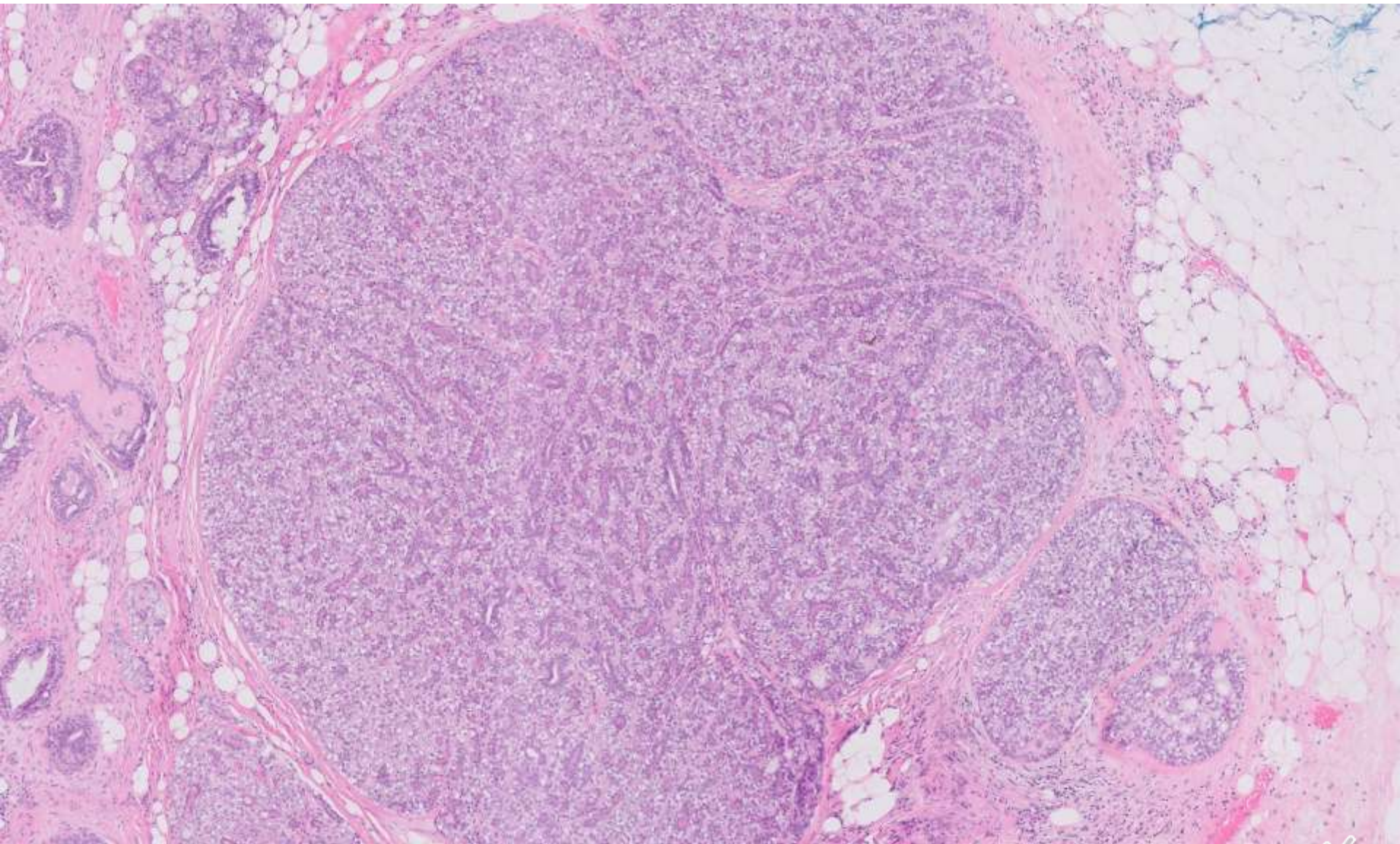


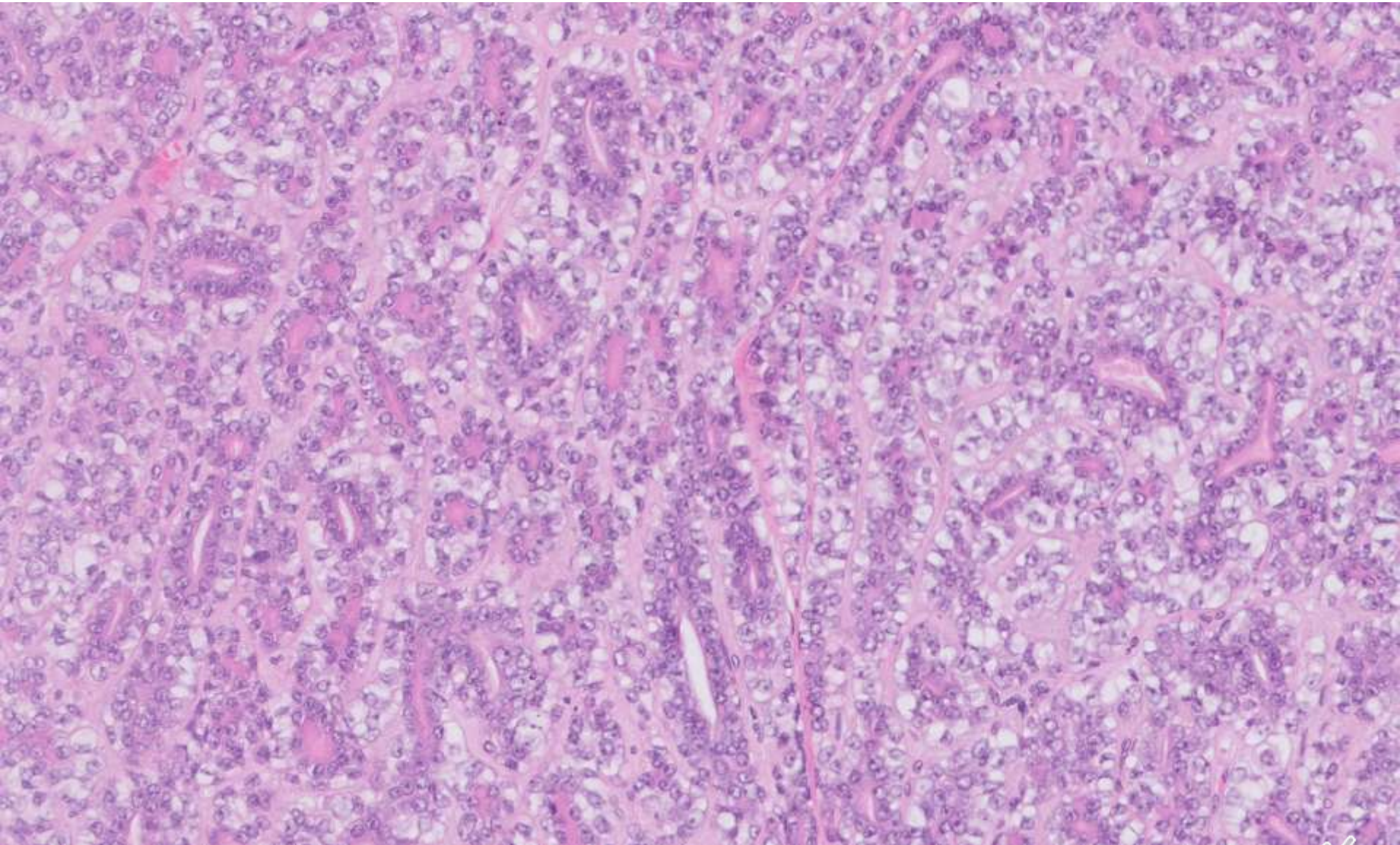












Diagnosis

- Adenomyoepithelioma



Adenomyoepithelioma

- Biphasic neoplasm composed of proliferation of inner luminal ductal epithelial cells and enlarged, prominent abluminal myoepithelial cells.
- Occurs more commonly in older, postmenopausal women but wide age range reported.
- Size can range from 0.5cm to 8cm but most commonly <3cm.
- Histological similarities to epithelial-myoepithelial carcinoma of the salivary gland



Adenomyoepithelioma

- Architectural patterns: lobulated, papillary, tubular and spindled
- Stroma can have a hyaline/sclerotic collagenous quality due to basement membrane matrix production.
- Focal squamous, apocrine and sebaceous metaplasia have been reported.
- Tumours with intraductal papillary growth merging with an intraductal papilloma have been described.
- Papillary component can be seen in dilated ducts at the periphery of the tumour

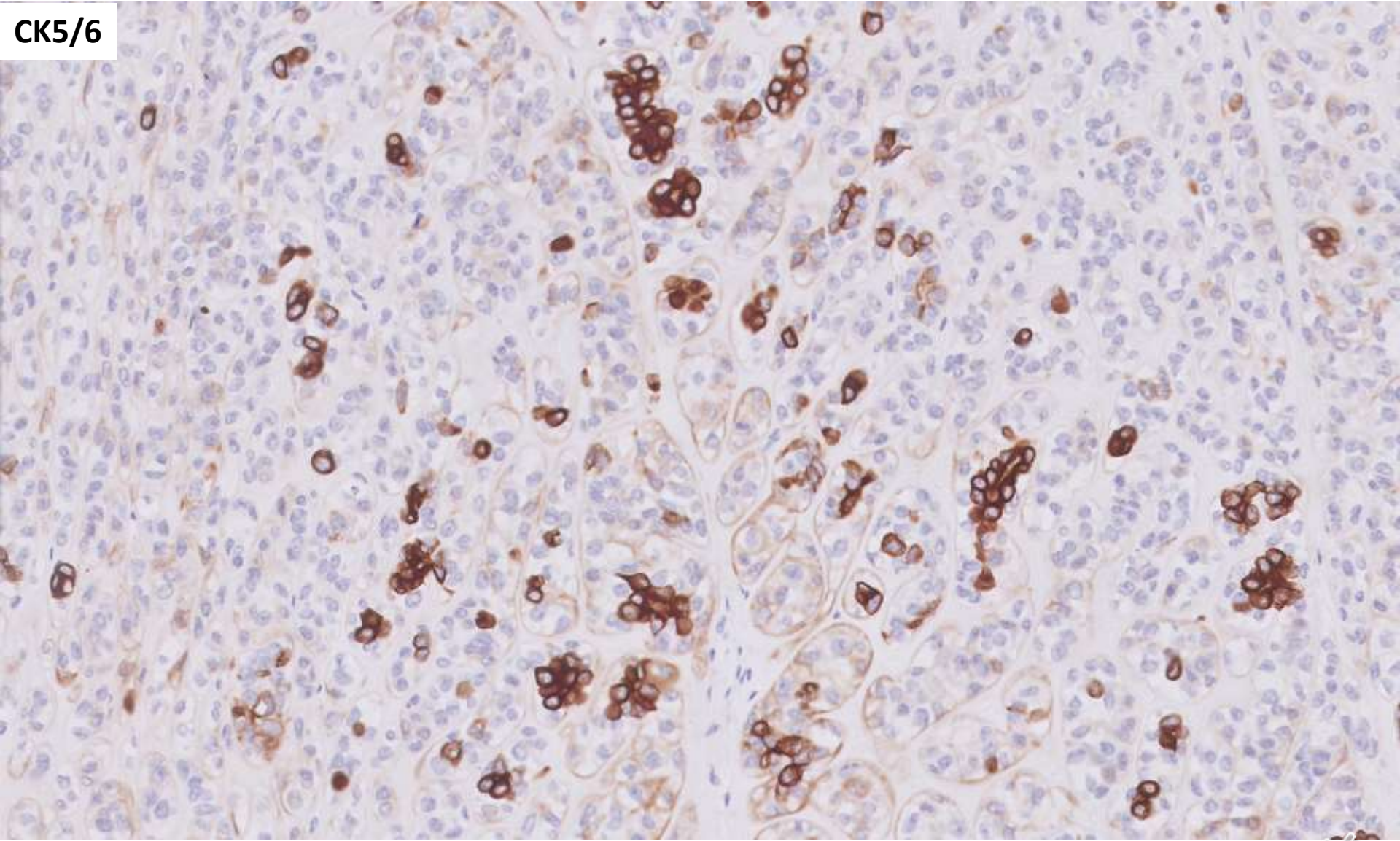


Immunohistochemistry

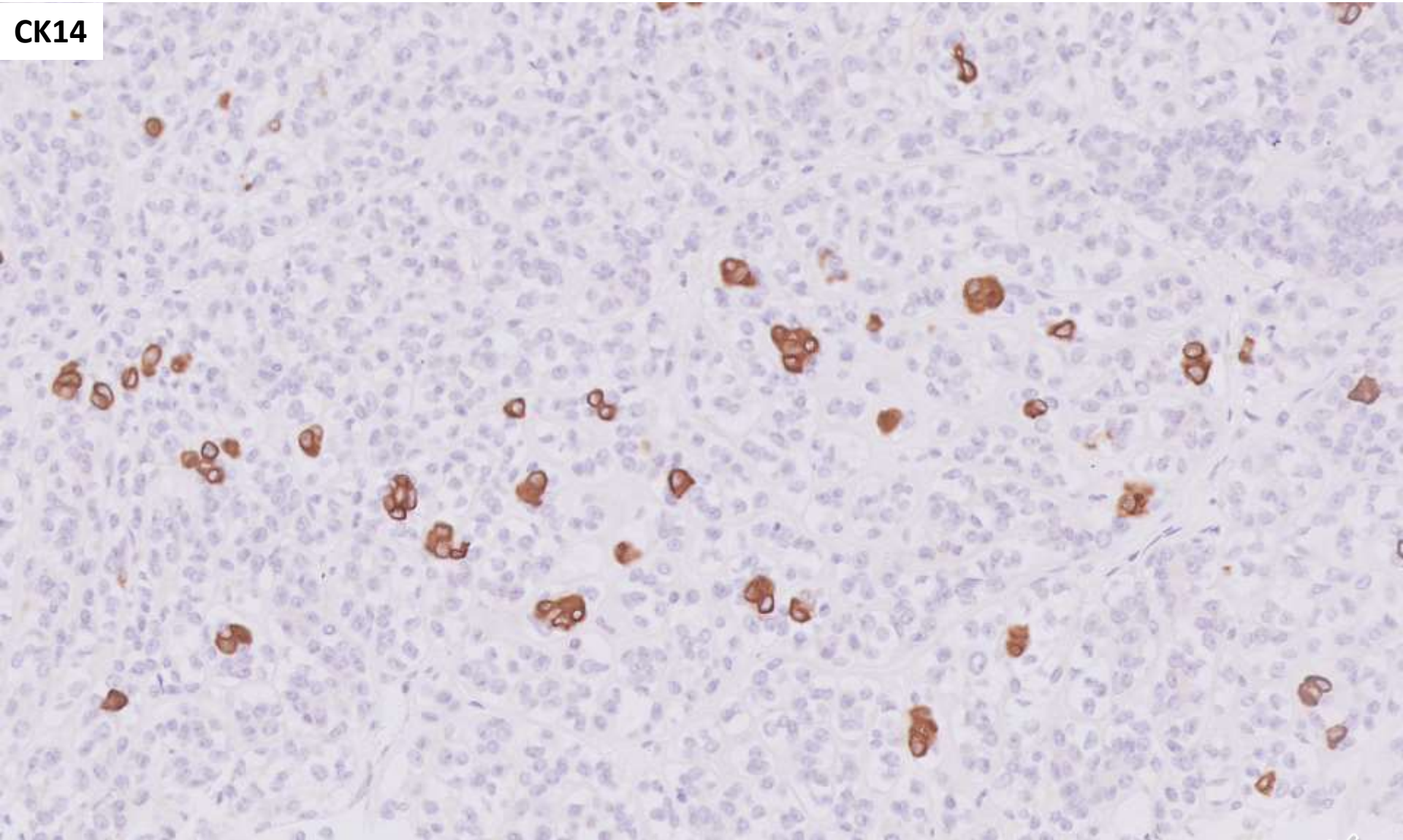
- P63, S100, smooth muscle myosin heavy chain, SMA and other myoepithelial markers can help to highlight the biphasic nature of the tumour and increased number of myoepithelial cells.
- Intensity and uniformity of staining may vary especially for stains like S100, SMA.
- High molecular weight cytokeratins, such as CK5/6 have been reported to stain the luminal cells in a paradoxical fashion.



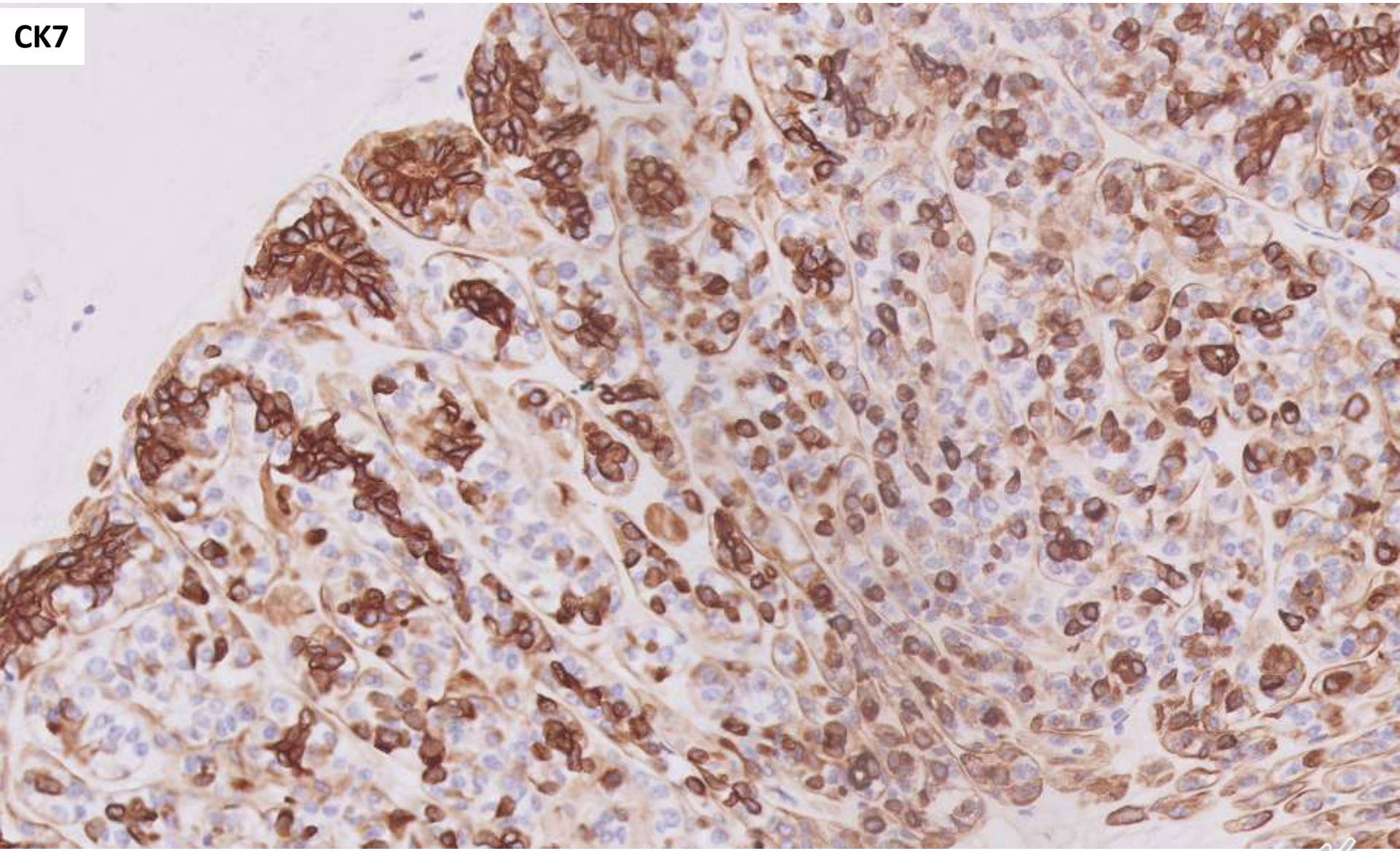
CK5/6



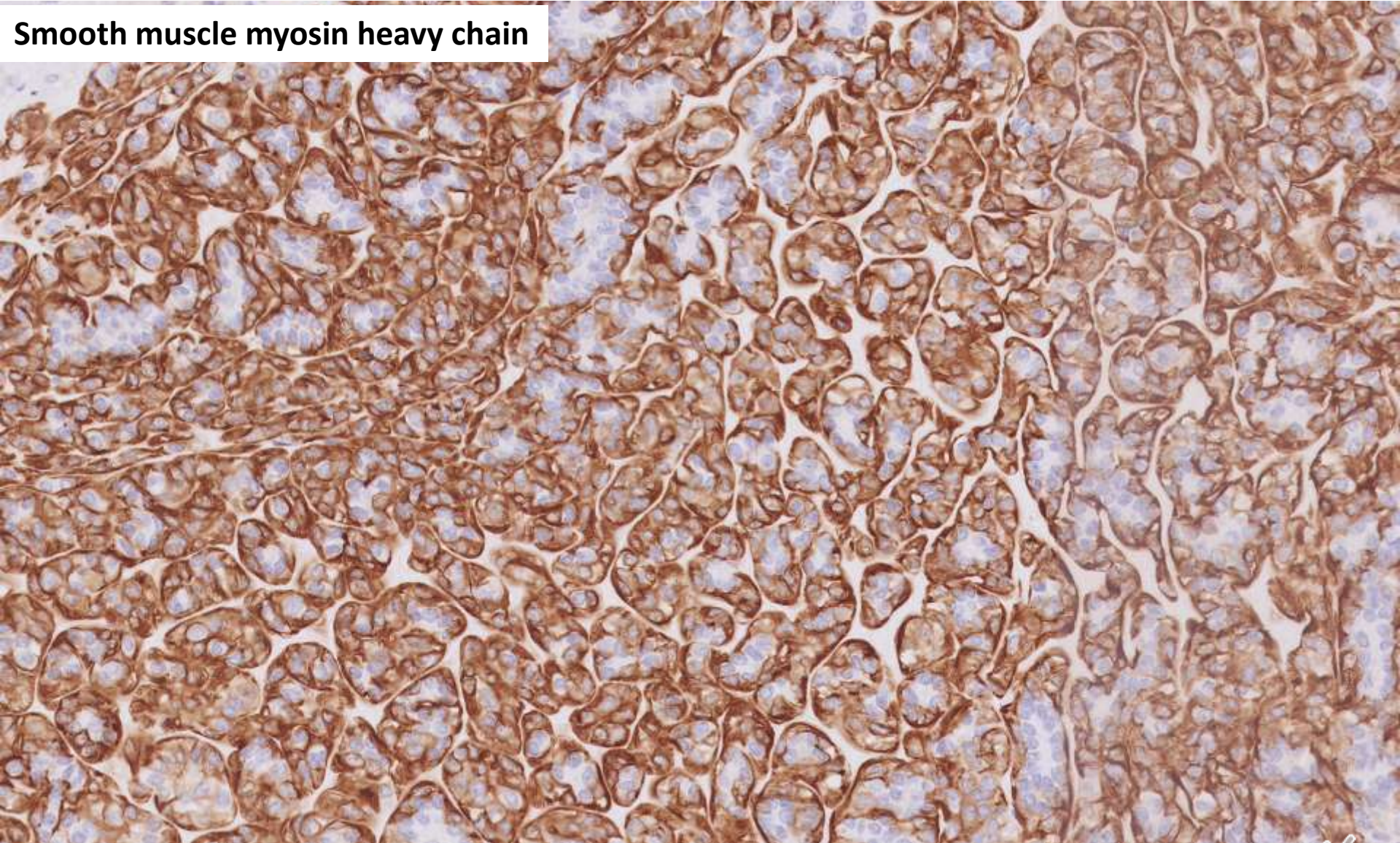
CK14



CK7



Smooth muscle myosin heavy chain



Immunohistochemistry

- ER can be positive but a subset are ER negative. Most carcinomas that arise from AMEs arise from ER negative AMEs.
- Focal MYB and CD117 IHC staining has been reported in AMEs and should not be used to make a diagnosis of adenoid cystic carcinoma.





Breast
Pathology
Course 2020 @21

Thank You



Division of Pathology
Singapore General Hospital



PATHOLOGY

