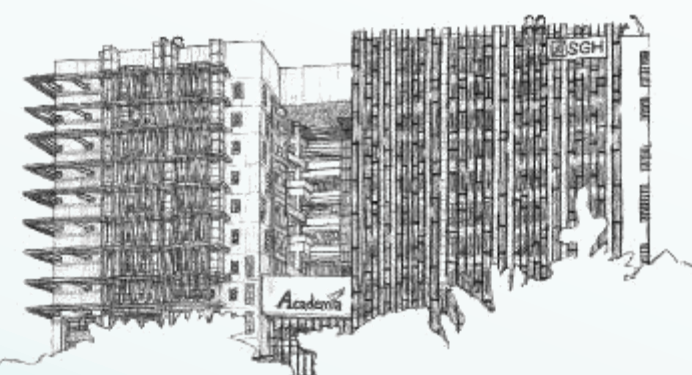
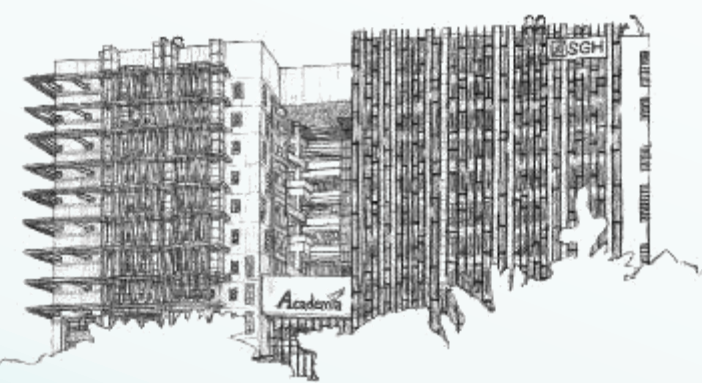
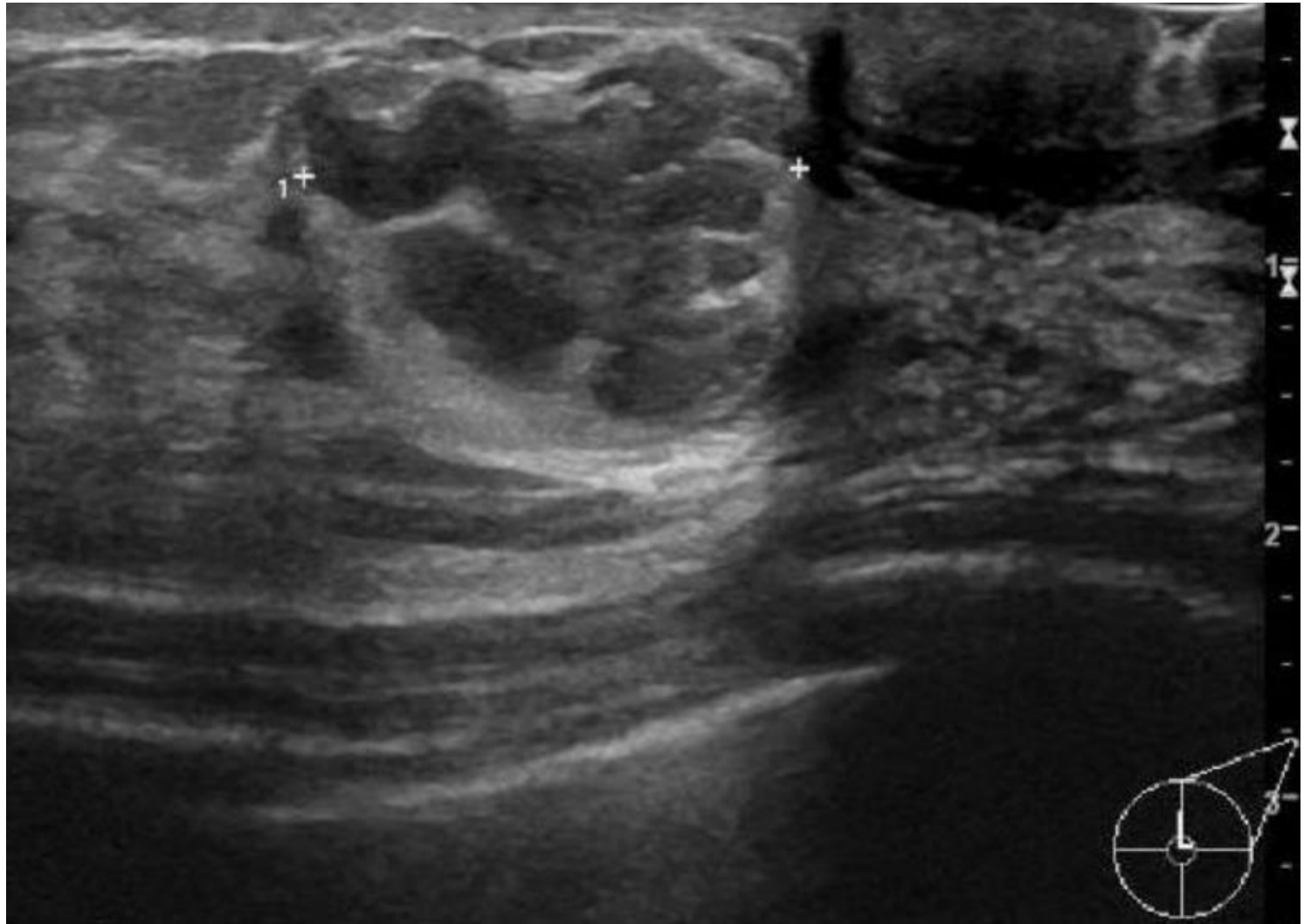


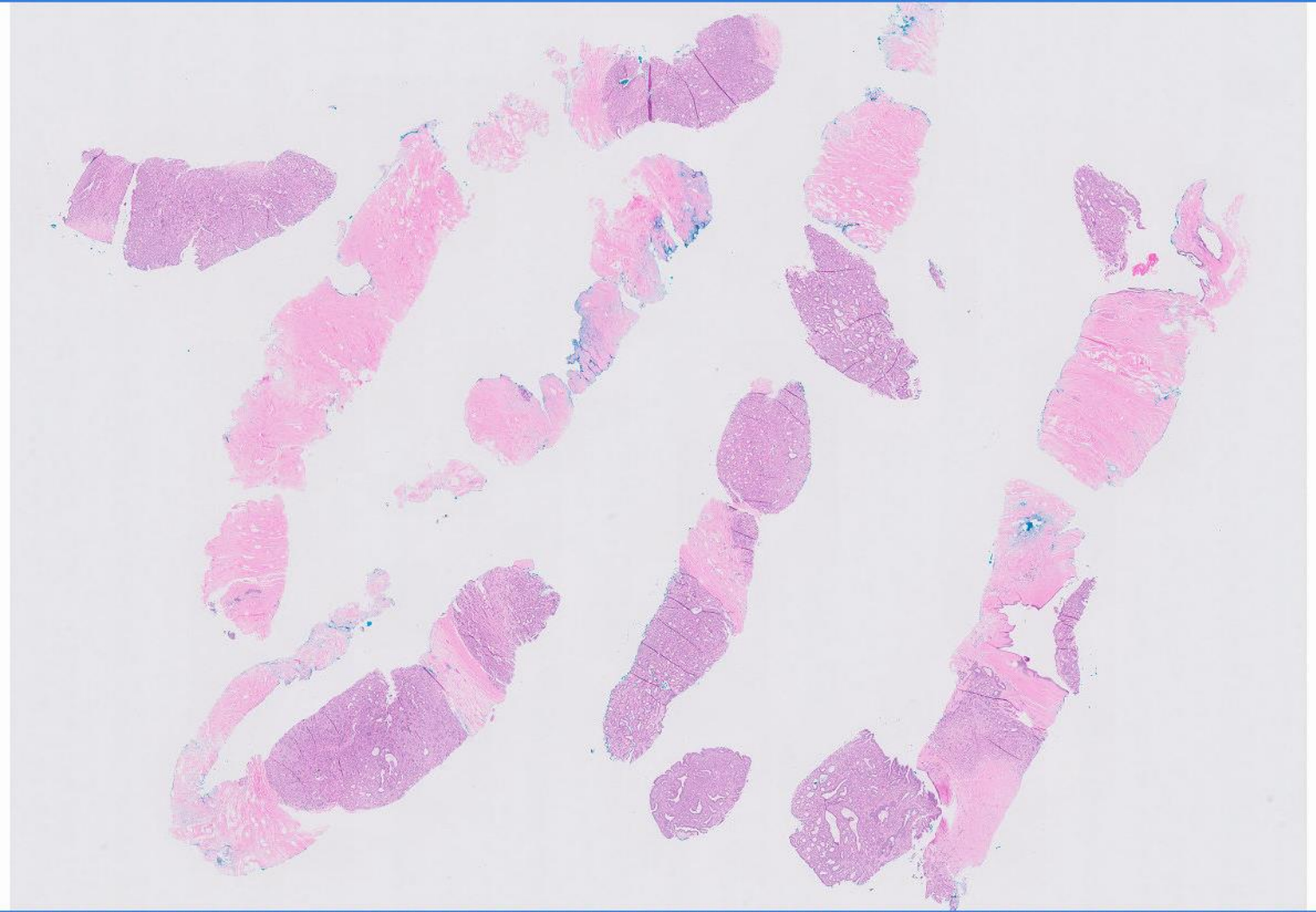
- 25 yo Female
- Left breast lump 2cm; aching pre-menses



- Ultrasound reveals a 17mm lobulated nodule with some benign to indeterminate features at the periareolar 12 o'clock position of the left breast

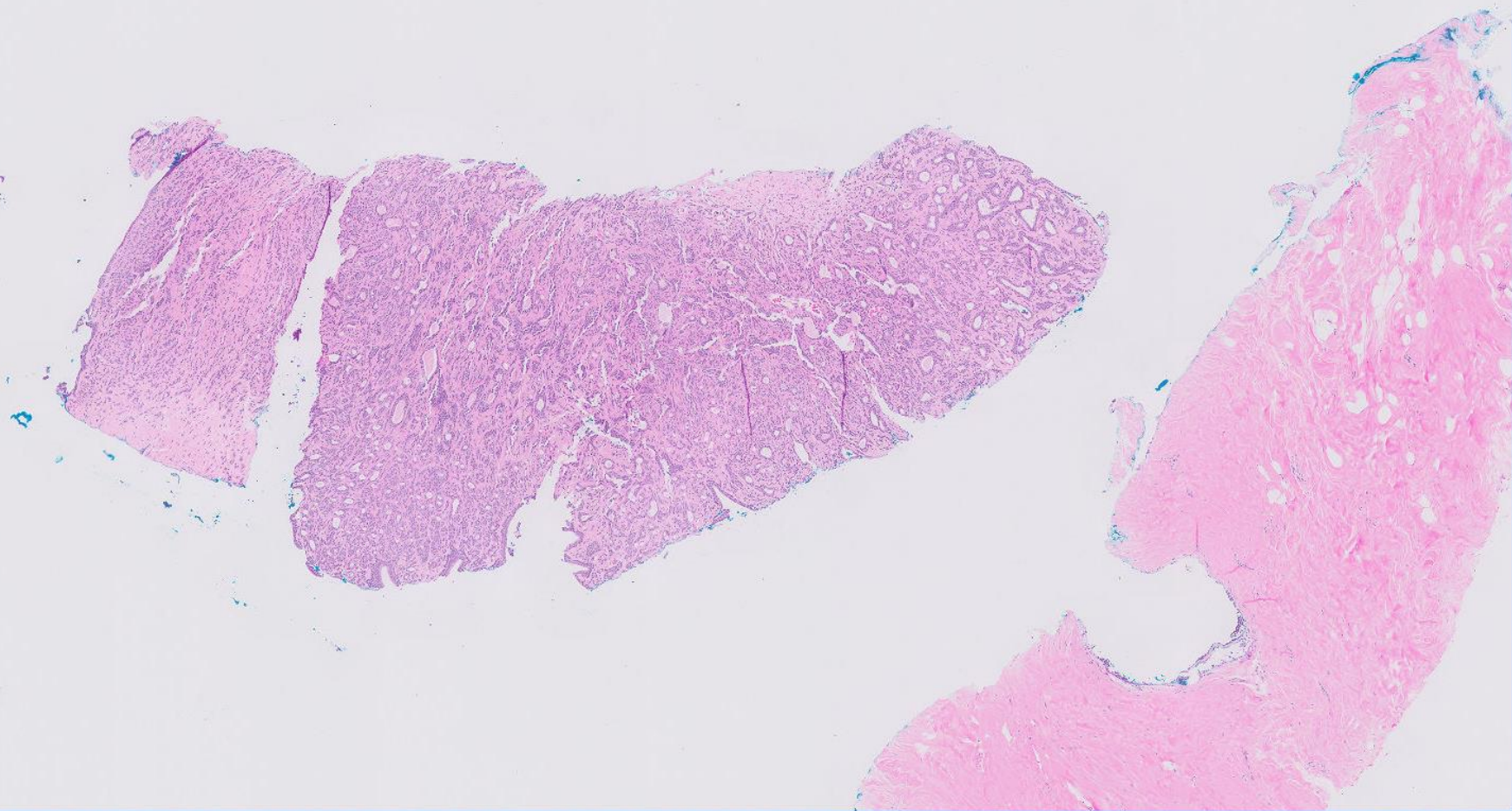




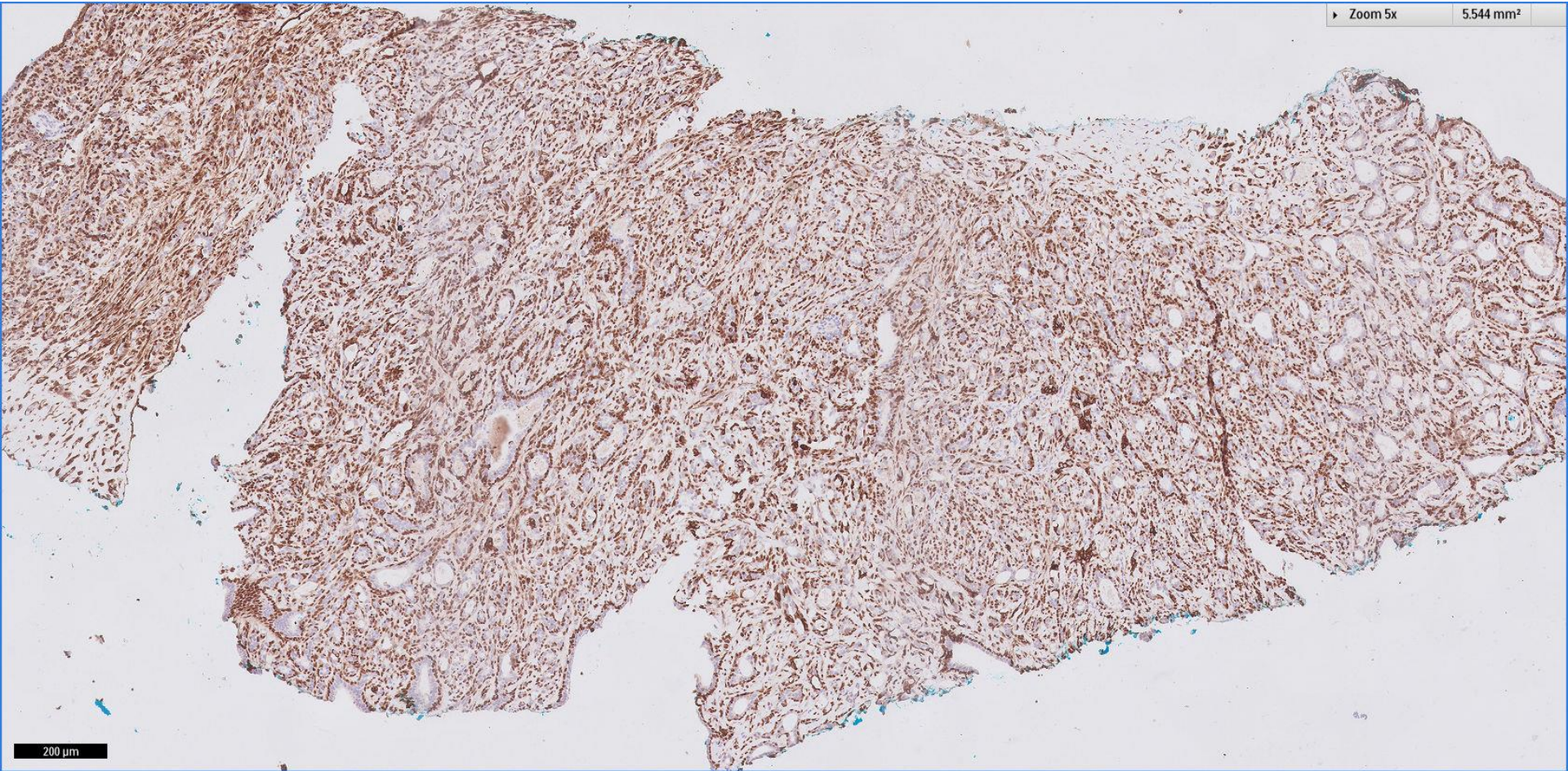


► Zoom 2x

22.176 mm²

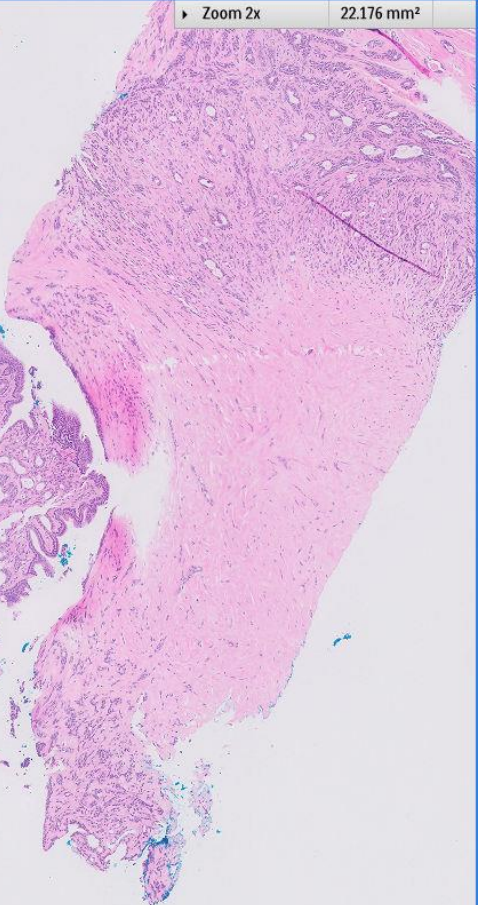
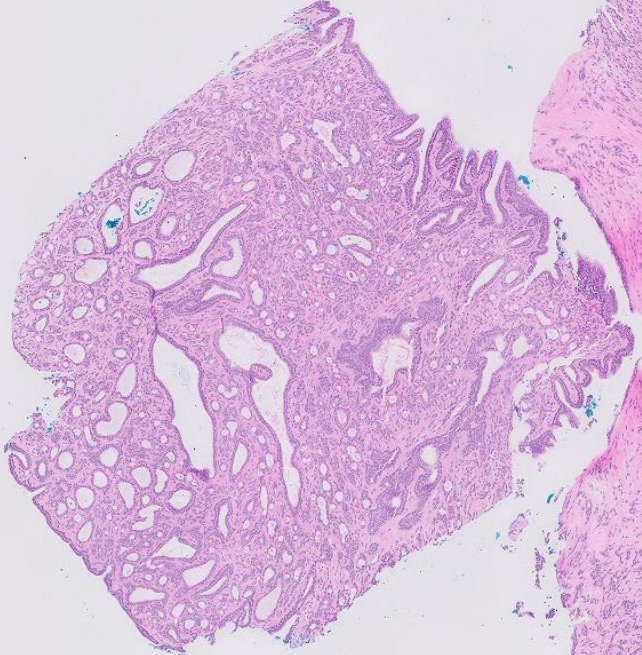
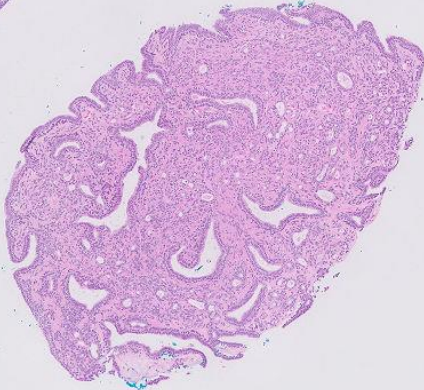
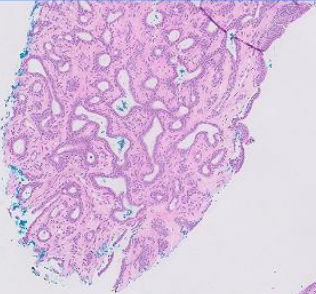


P63 + CK5/6



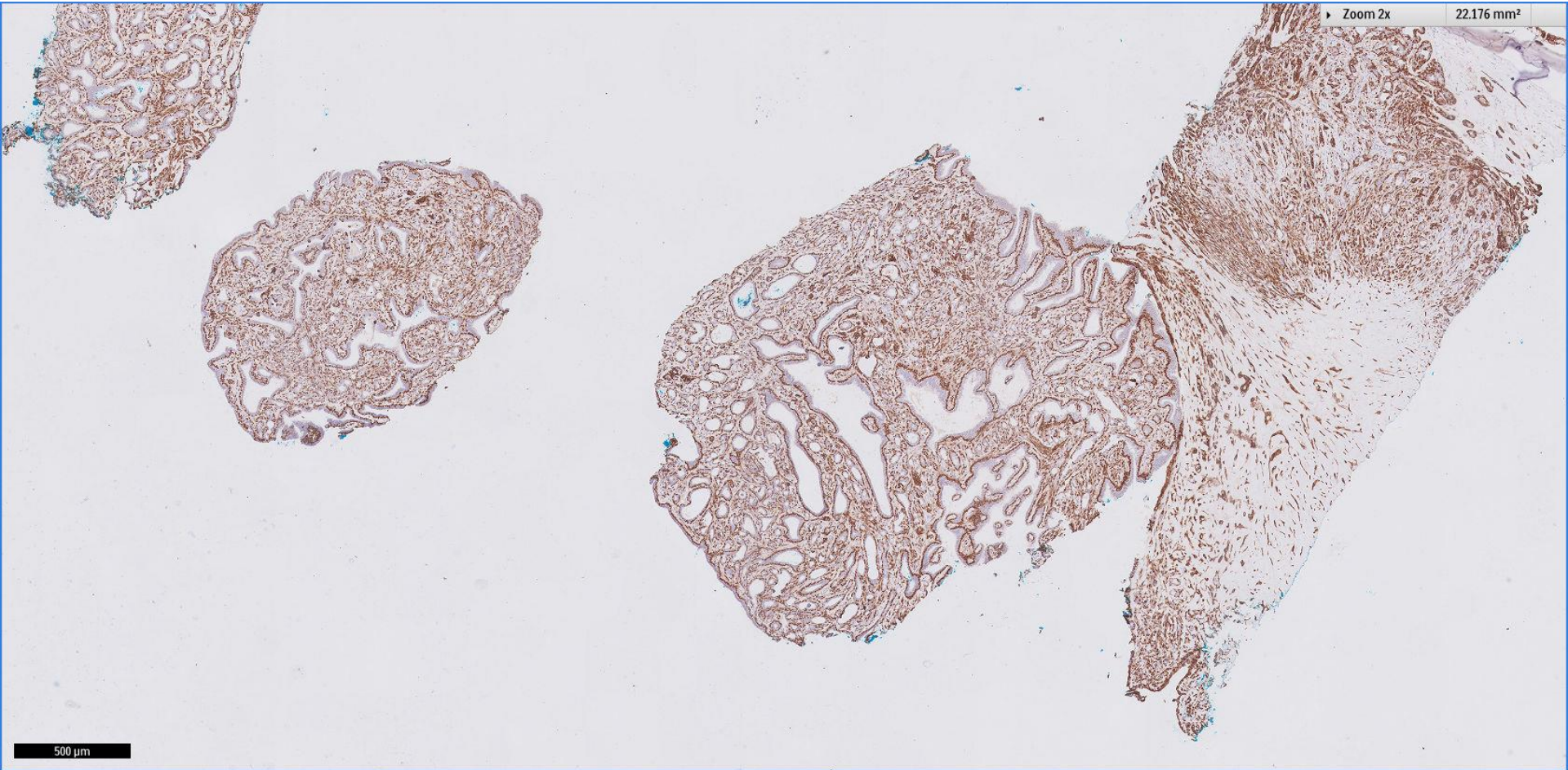
Zoom 2x

22.176 mm²



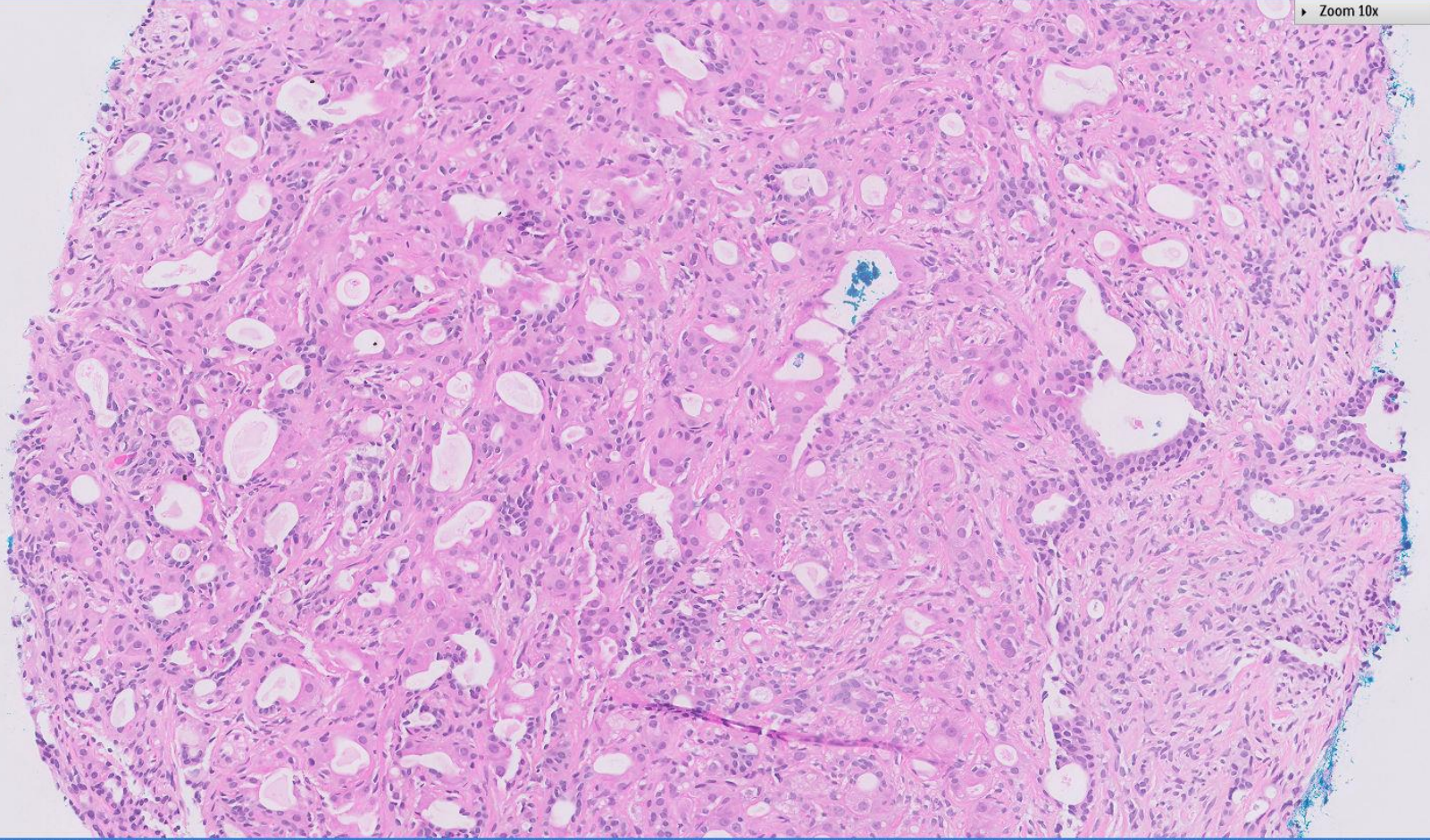
500 μ m

P63 + CK5/6



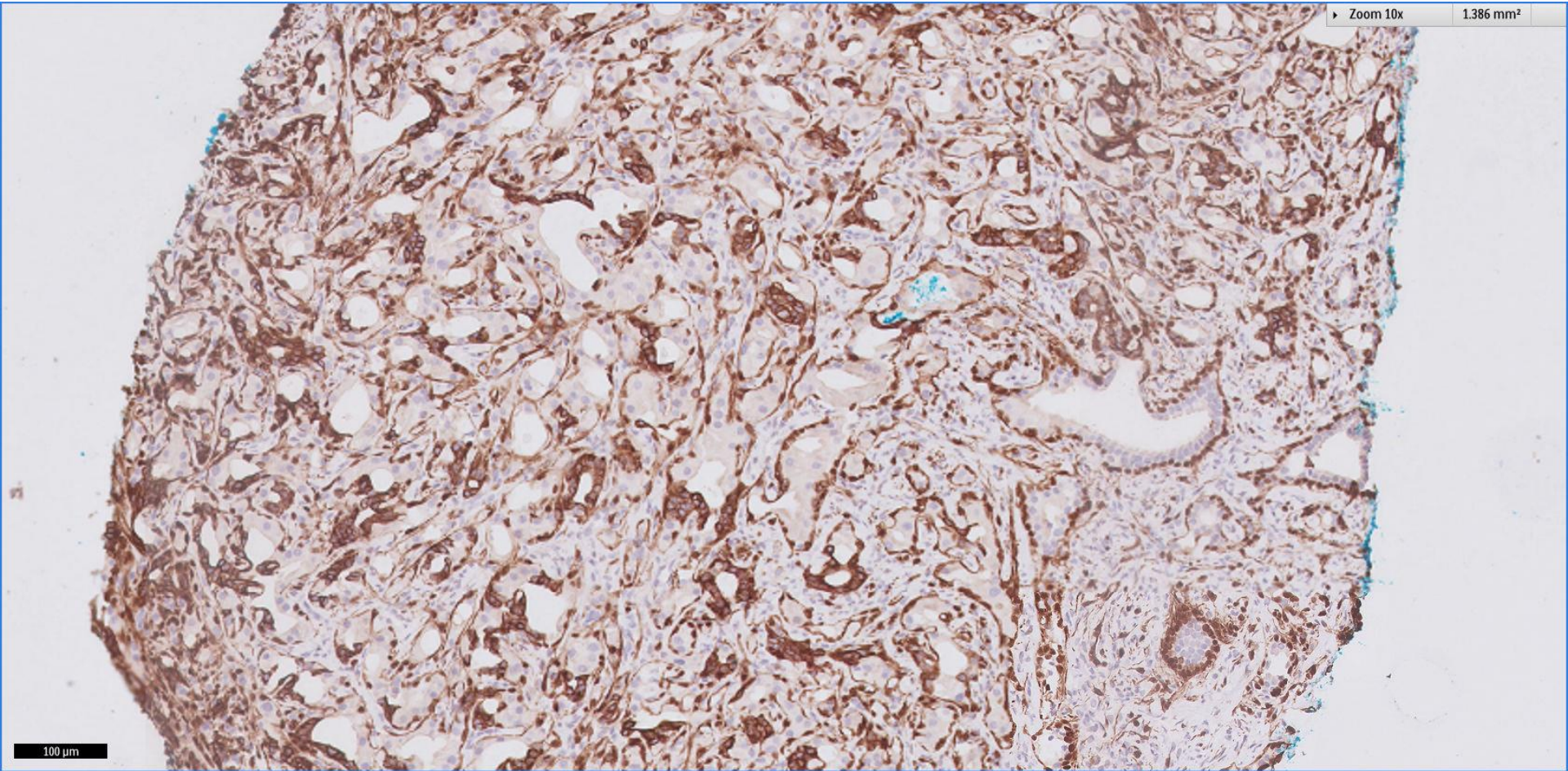
Zoom 10x

1.386 mm²



100 μ m

P63 + CK5/6

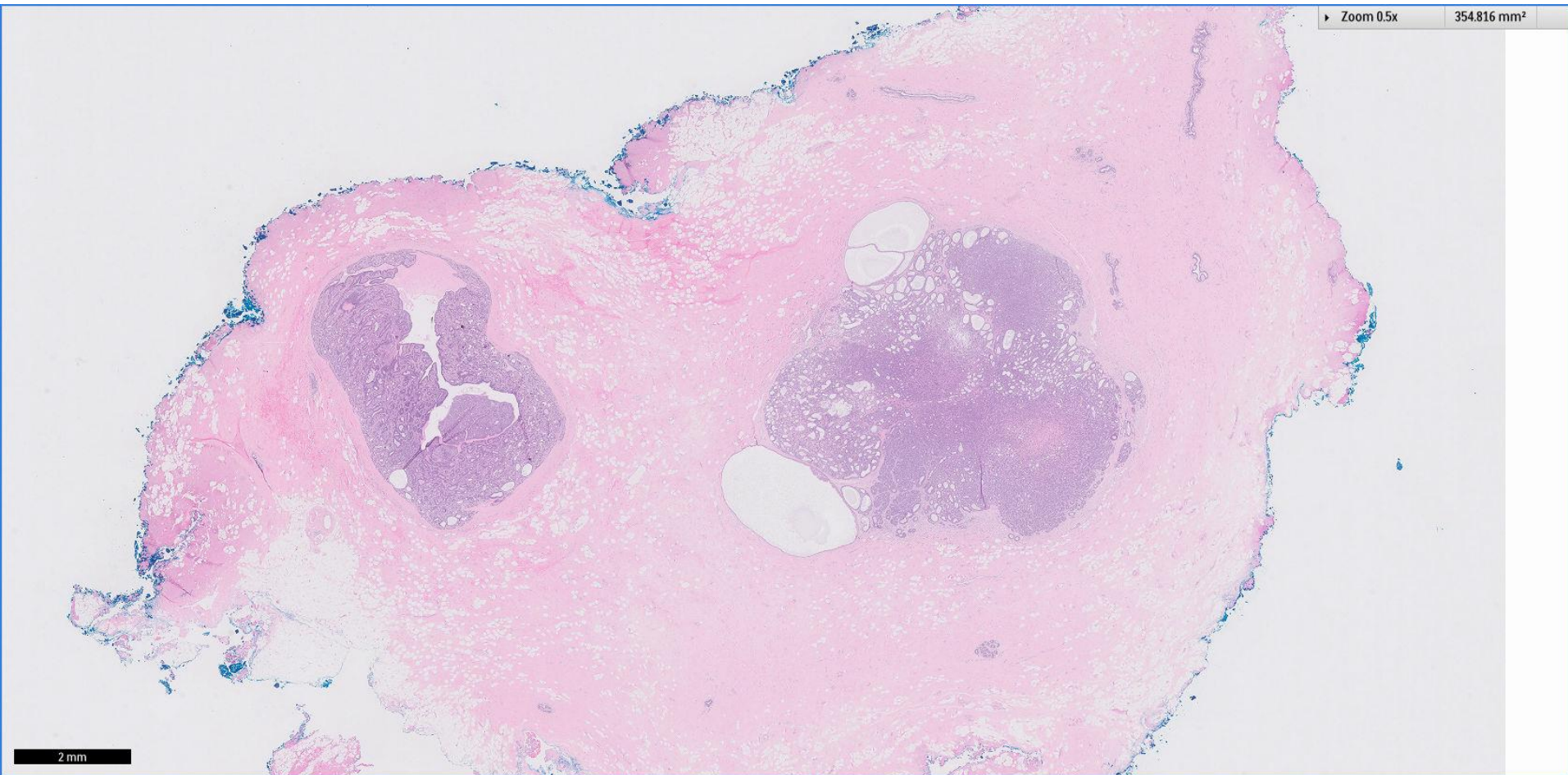


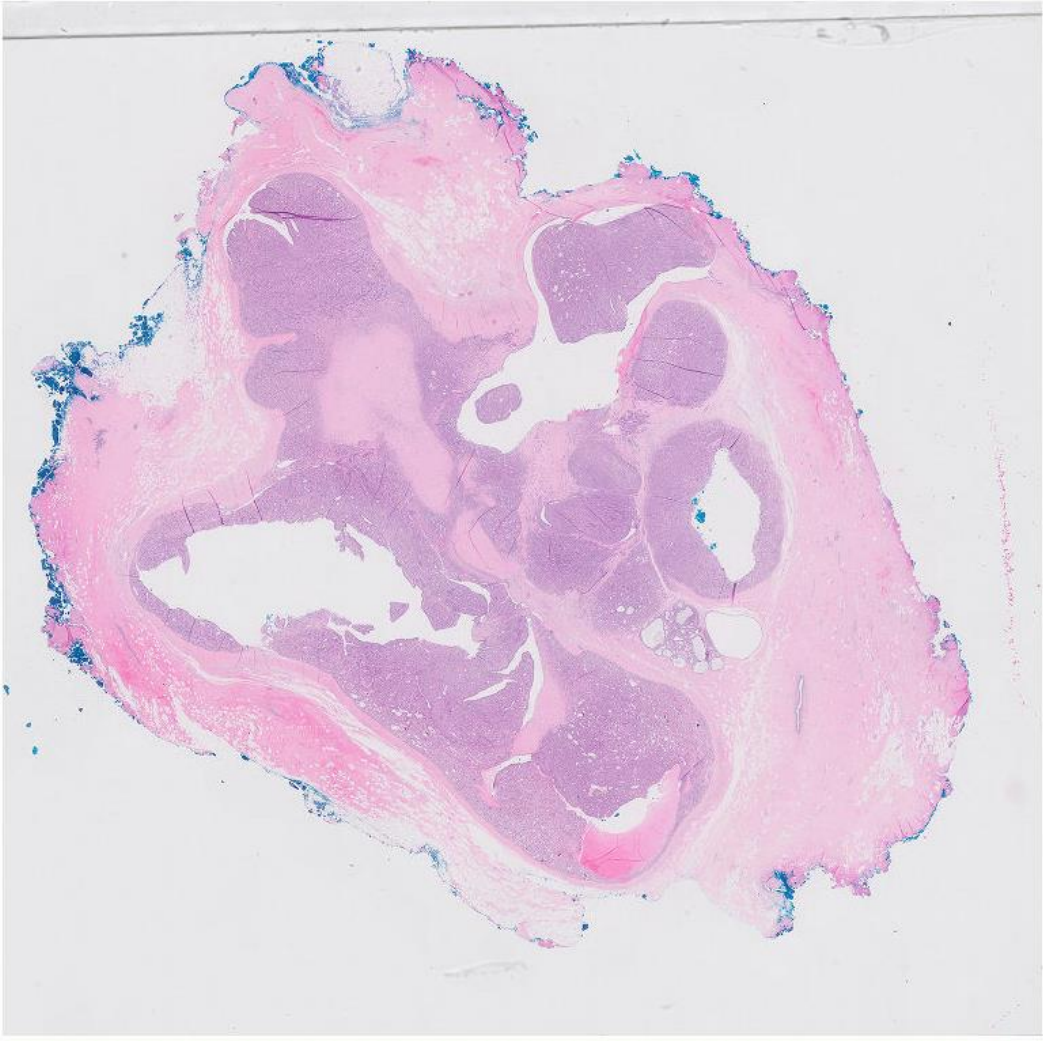
Left breast 1200 periareolar nodule: core biopsy:

- (Portions of) Papillary lesion

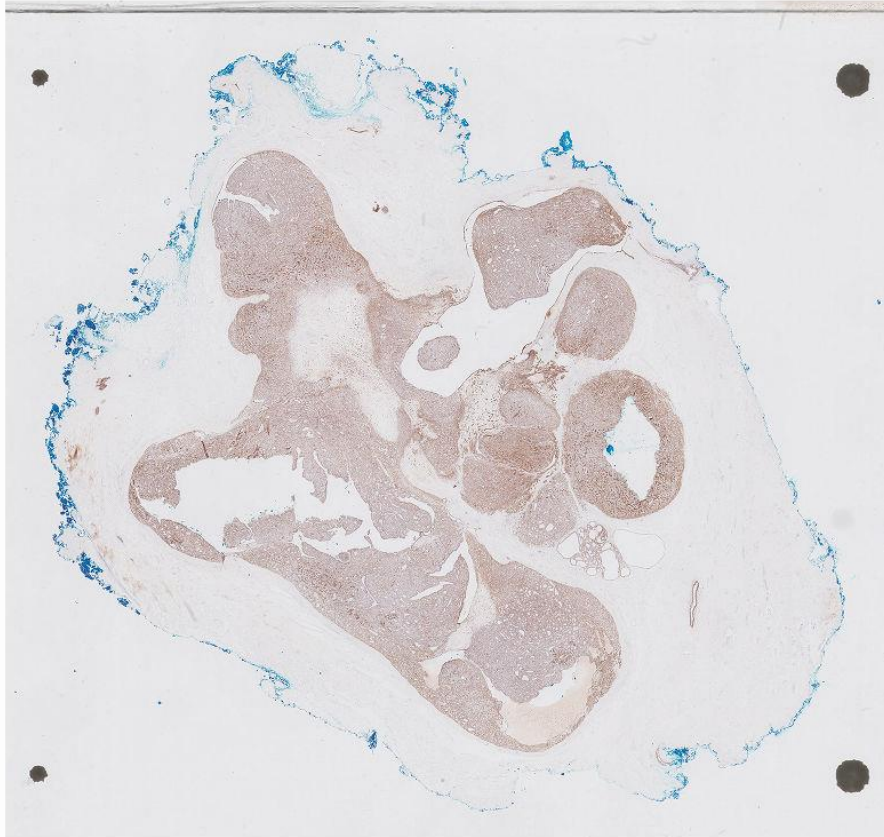
Comment: No atypical features are identified on this biopsy.

Excision performed





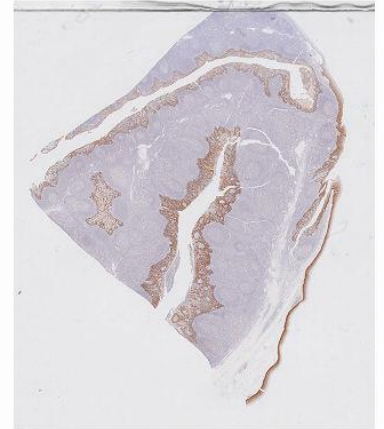
P63 + CK5/6

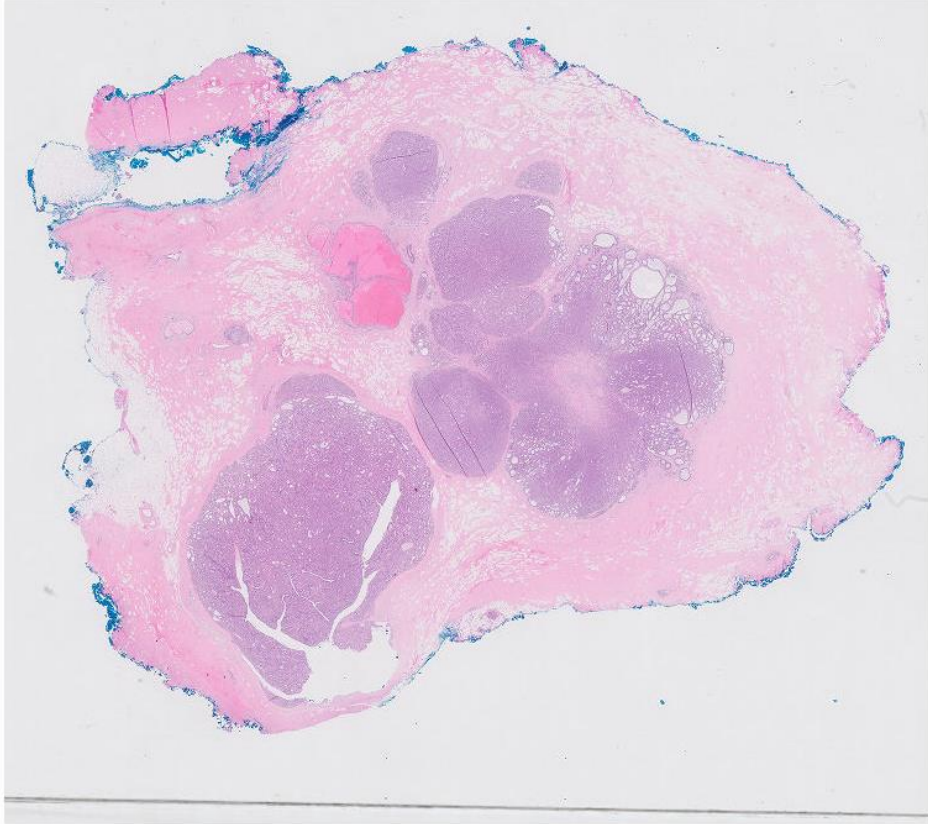


5 mm

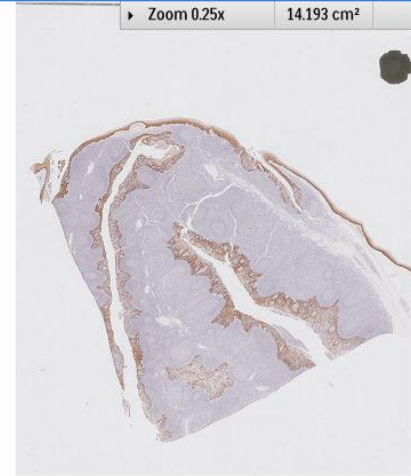
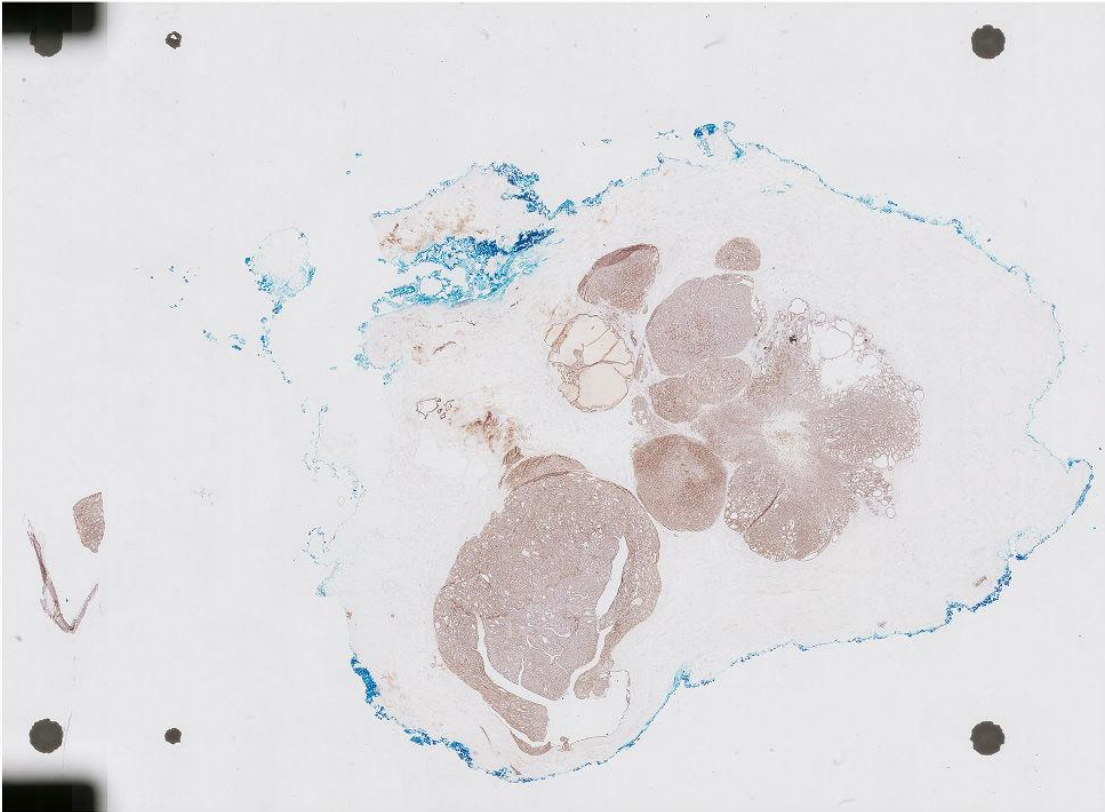
Zoom 0.25x

14.193 cm²





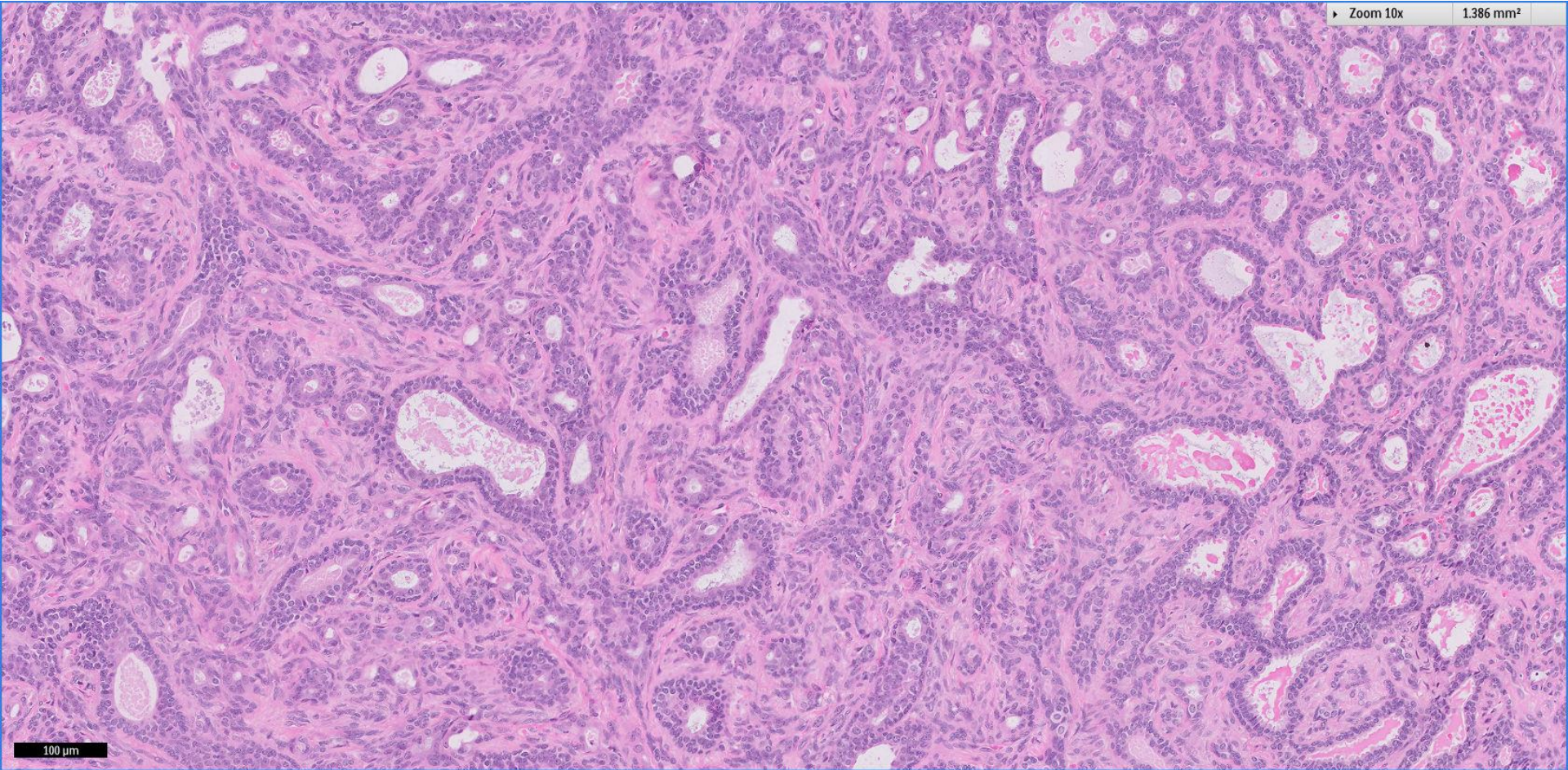
P63 + CK5/6



5 mm

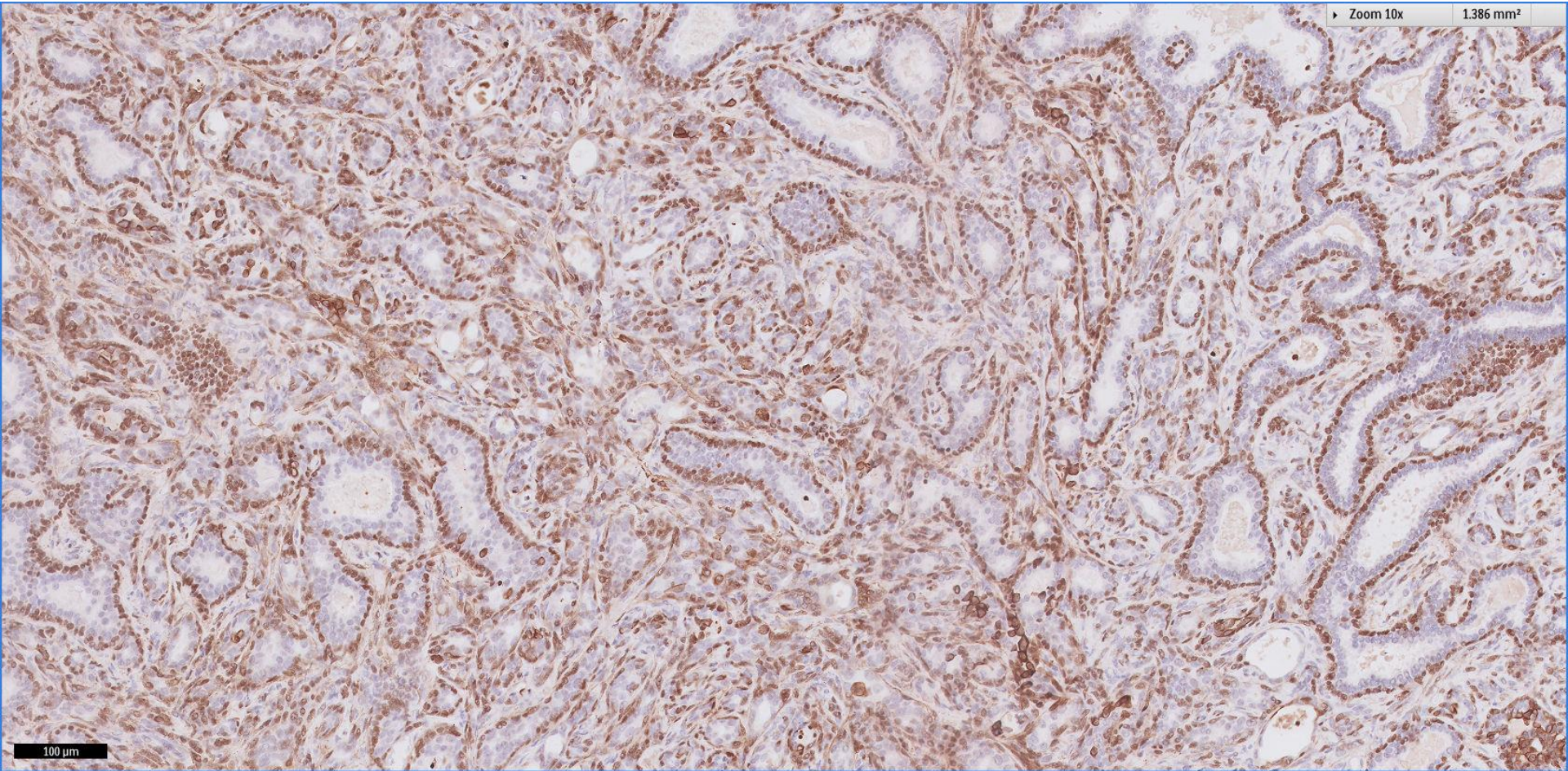
► Zoom 10x

1.386 mm²



100 μ m

P63 + CK5/6



Question 9.1

What is your diagnosis?

- A. Intraductal papilloma
- B. Papillary DCIS
- C. Encapsulated papillary carcinoma
- D. Solid papillary carcinoma
- E. Papilloma with DCIS

Diagnosis

Left breast lump; lumpectomy:

- Intraductal papilloma, completely excised