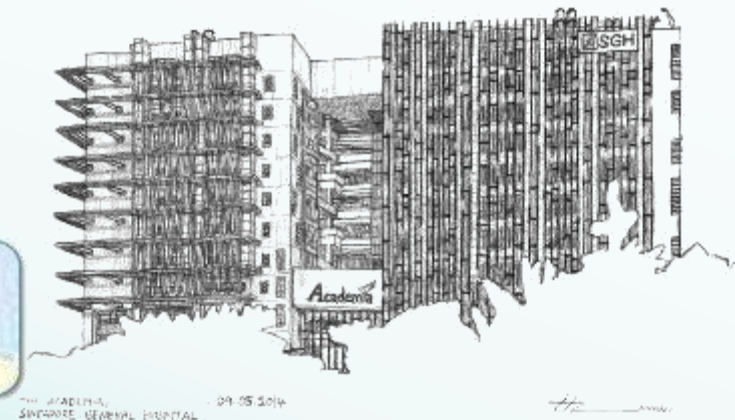
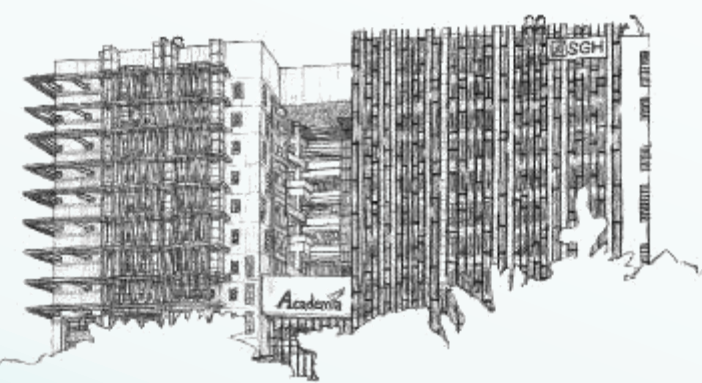
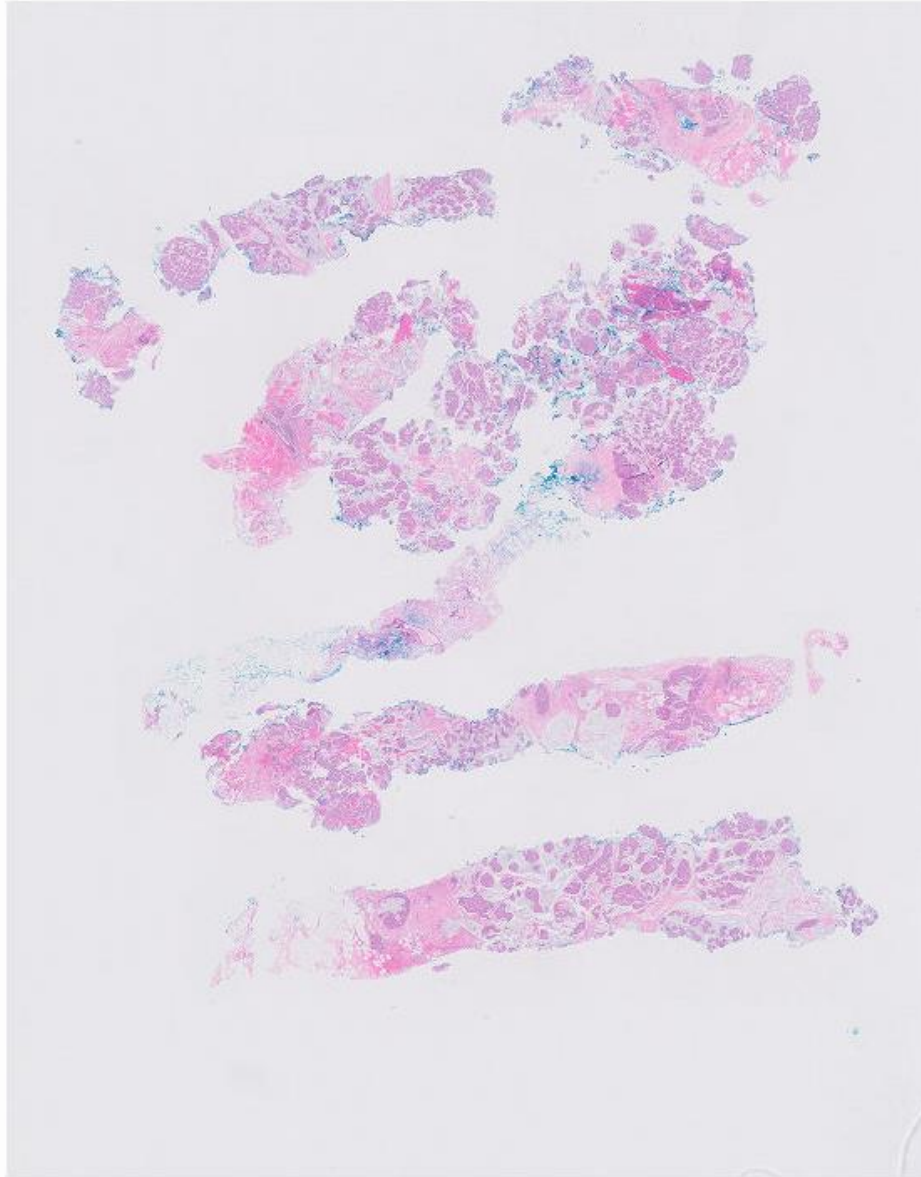


- 64 yo Female
- R nipple bloody discharge
- US R breast showed ?Vague lesions



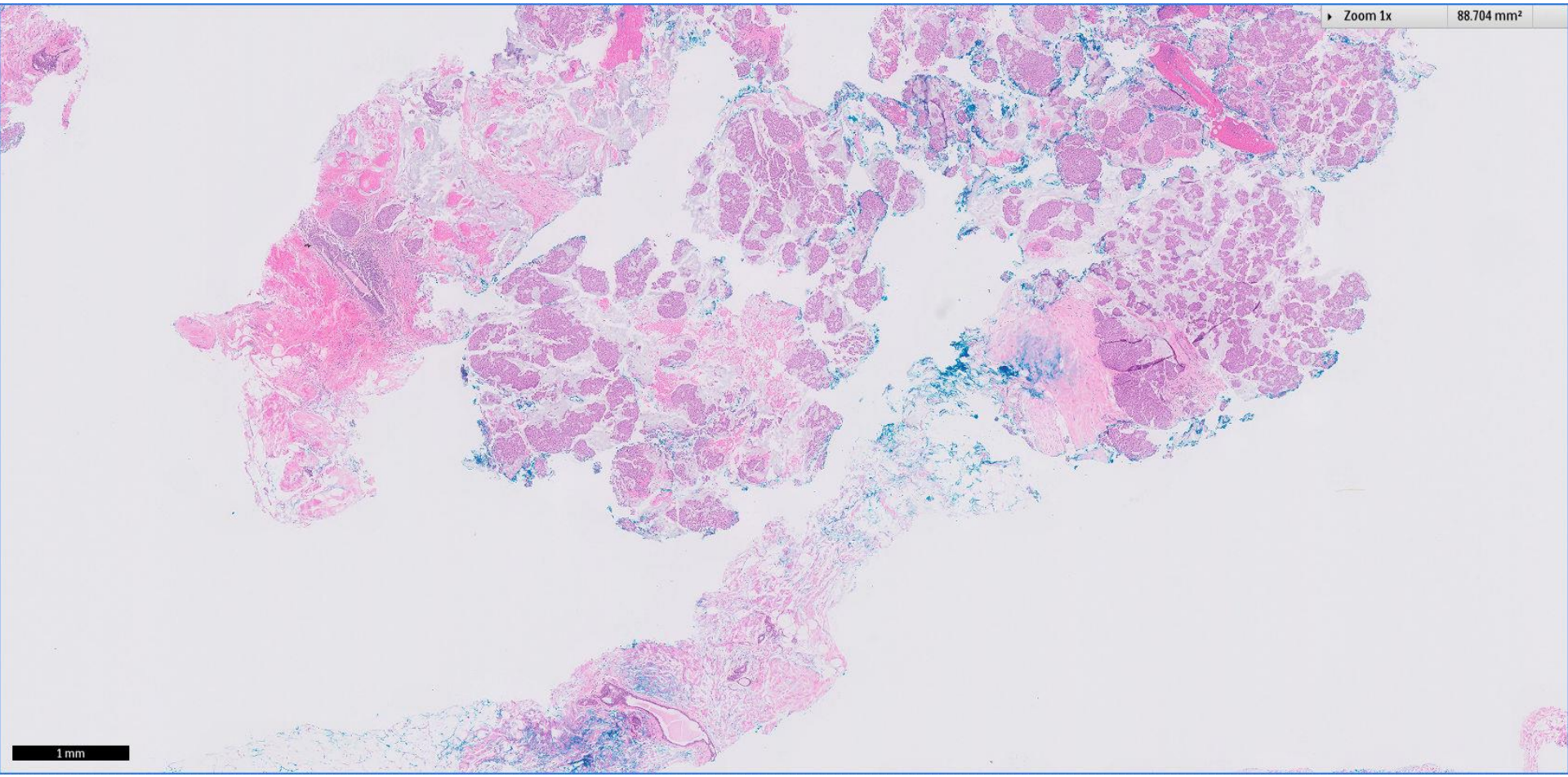
- MRI breast:
  - Suspicious 11mm lobulated enhancing mass in the right upper outer quadrant, correlates with the ill-defined mass at the 10:00 position on US.





Zoom 1x

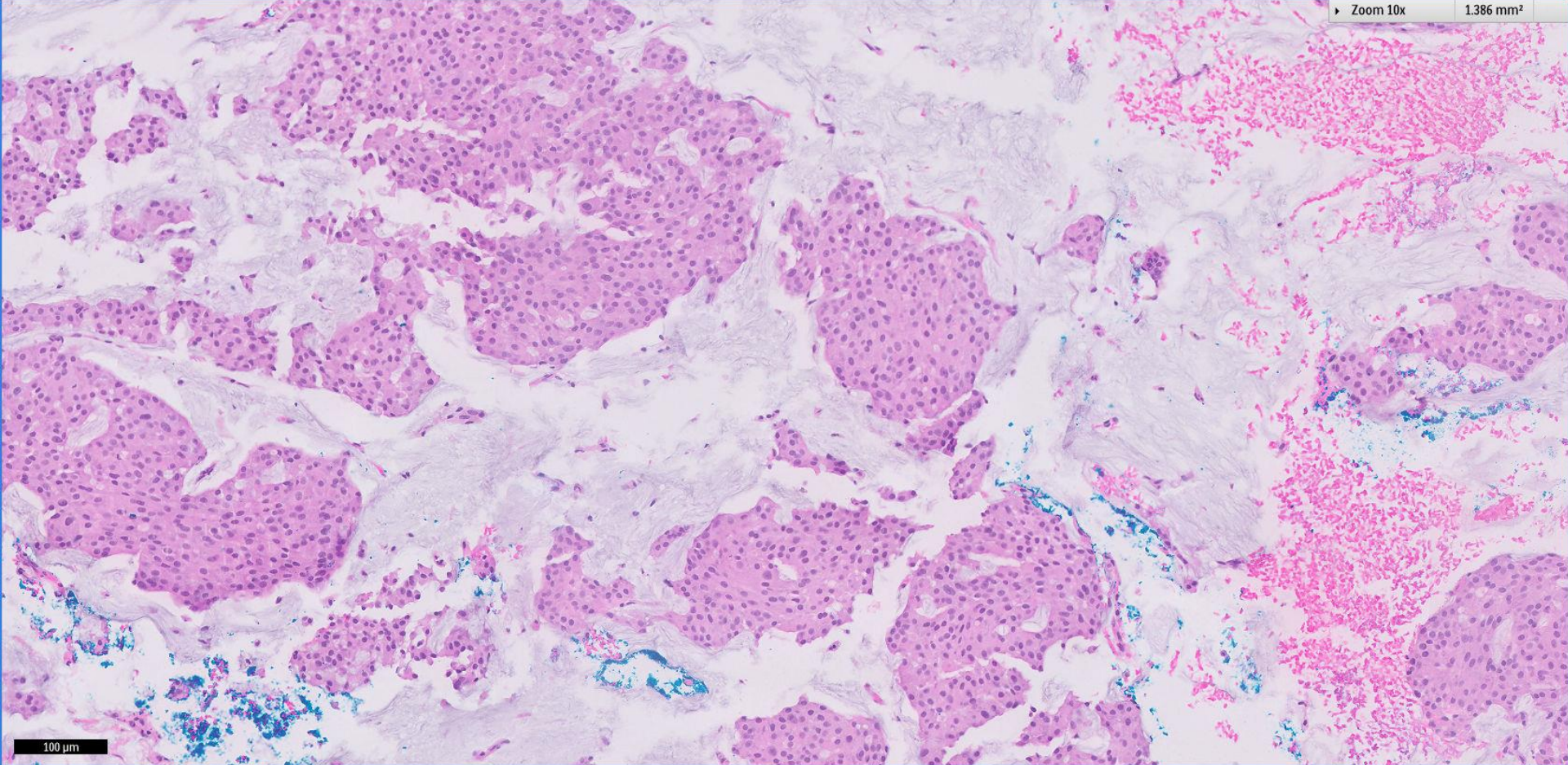
88.704 mm<sup>2</sup>



1 mm

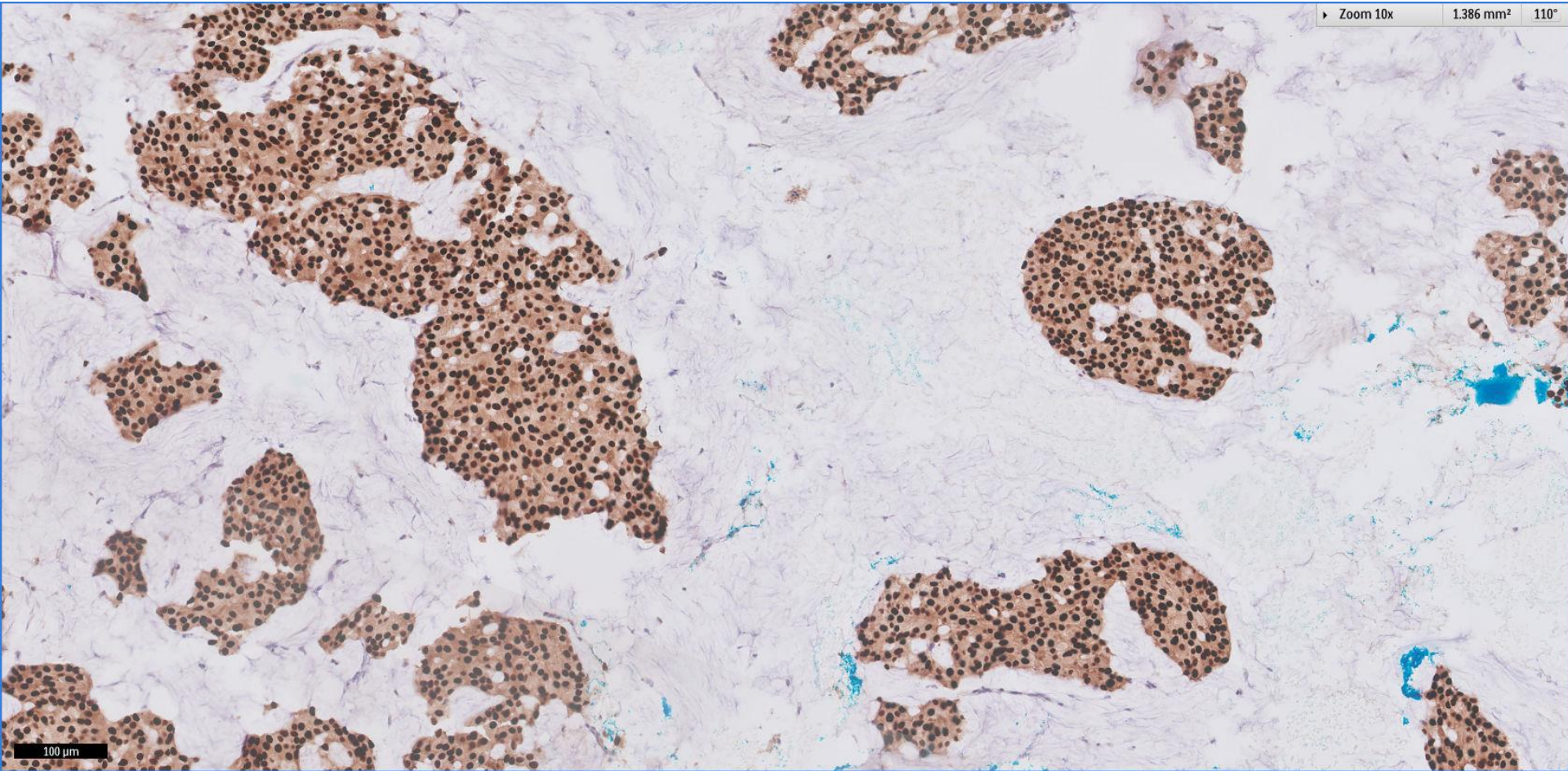
Zoom 10x

1.386 mm<sup>2</sup>



100  $\mu$ m

ER



## Question 7.1

What is your diagnosis?

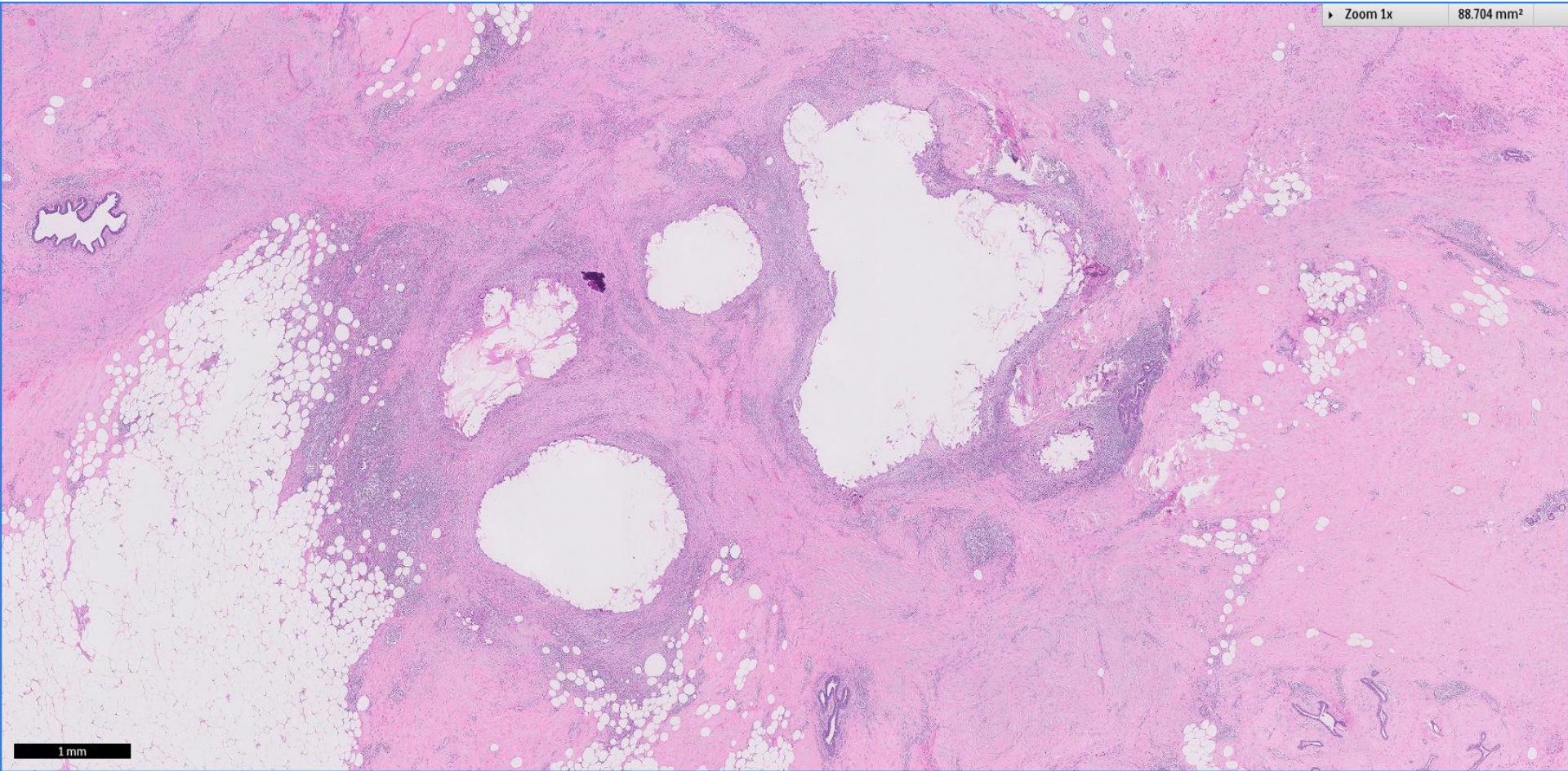
- A. Papillary lesion
- B. Mucocele-like lesion
- C. Mucinous carcinoma

Right breast 10 o'clock, US core biopsy:

- Invasive carcinoma with mucinous features
- ER and PR positive, c-erb-B2 equivocal

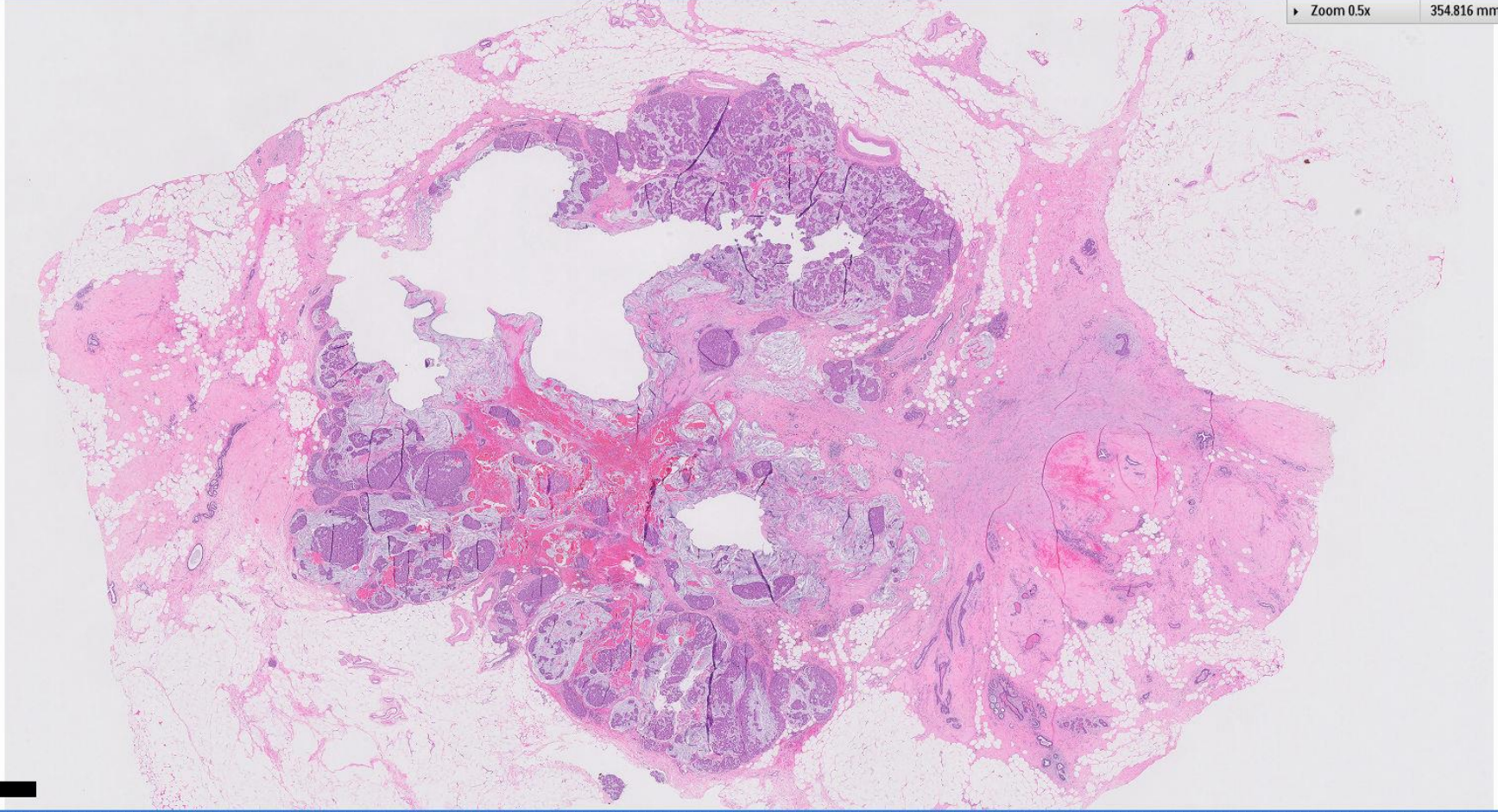


# Mastectomy



Zoom 0.5x

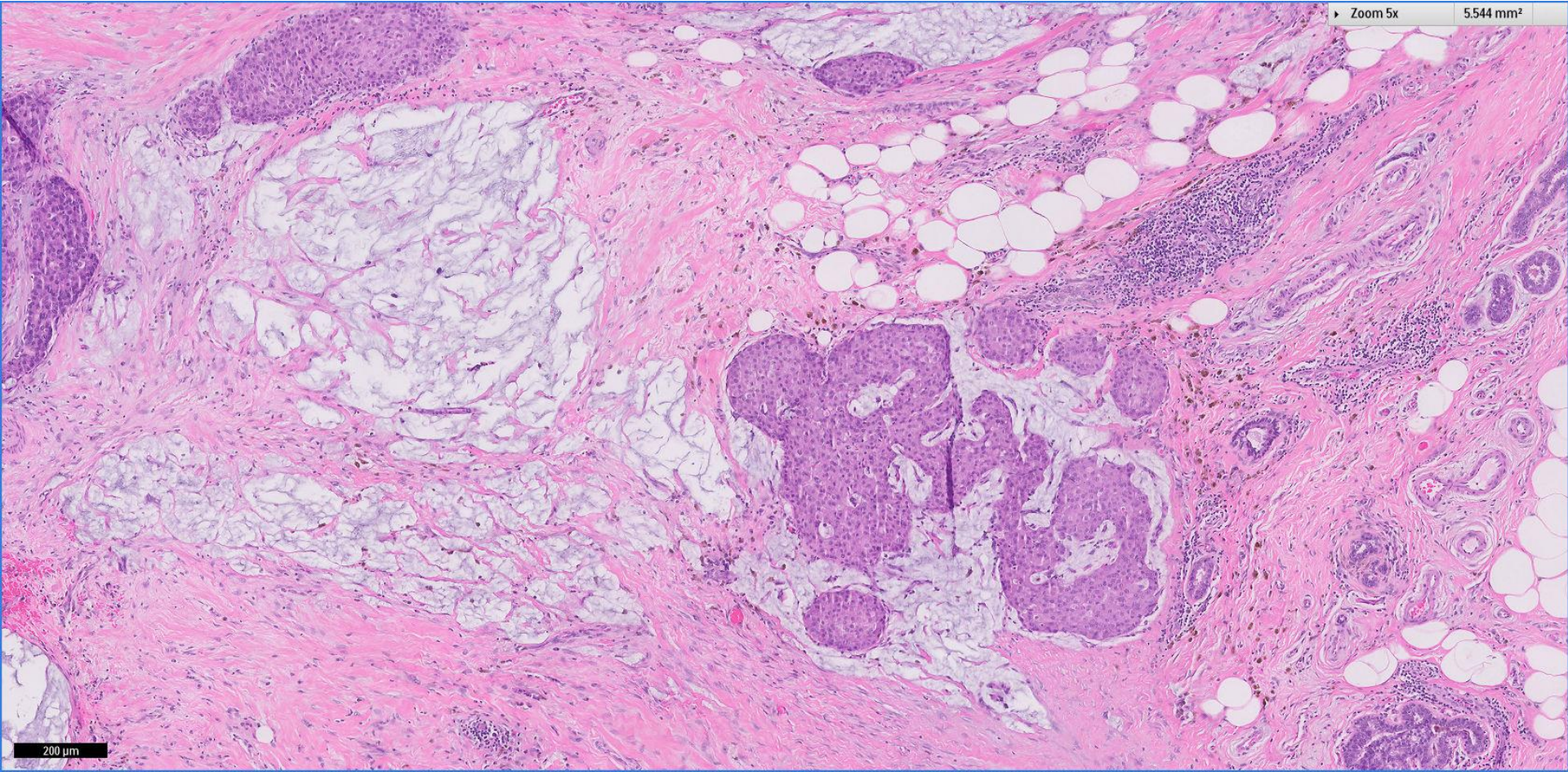
354.816 mm<sup>2</sup>



2 mm

Zoom 5x

5.544 mm<sup>2</sup>



200  $\mu$ m

# Diagnosis

Right breast, simple mastectomy:

- Mucinous carcinoma, 16mm in maximum dimension, grade 2, associated with minimal low grade DCIS
- Clear of resection margins; repeat c-erb-B2 negative