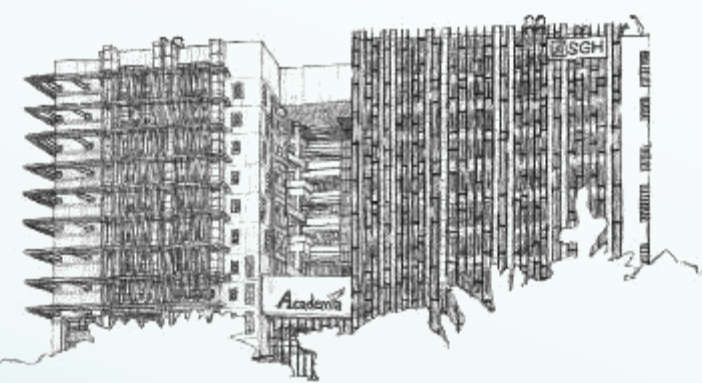
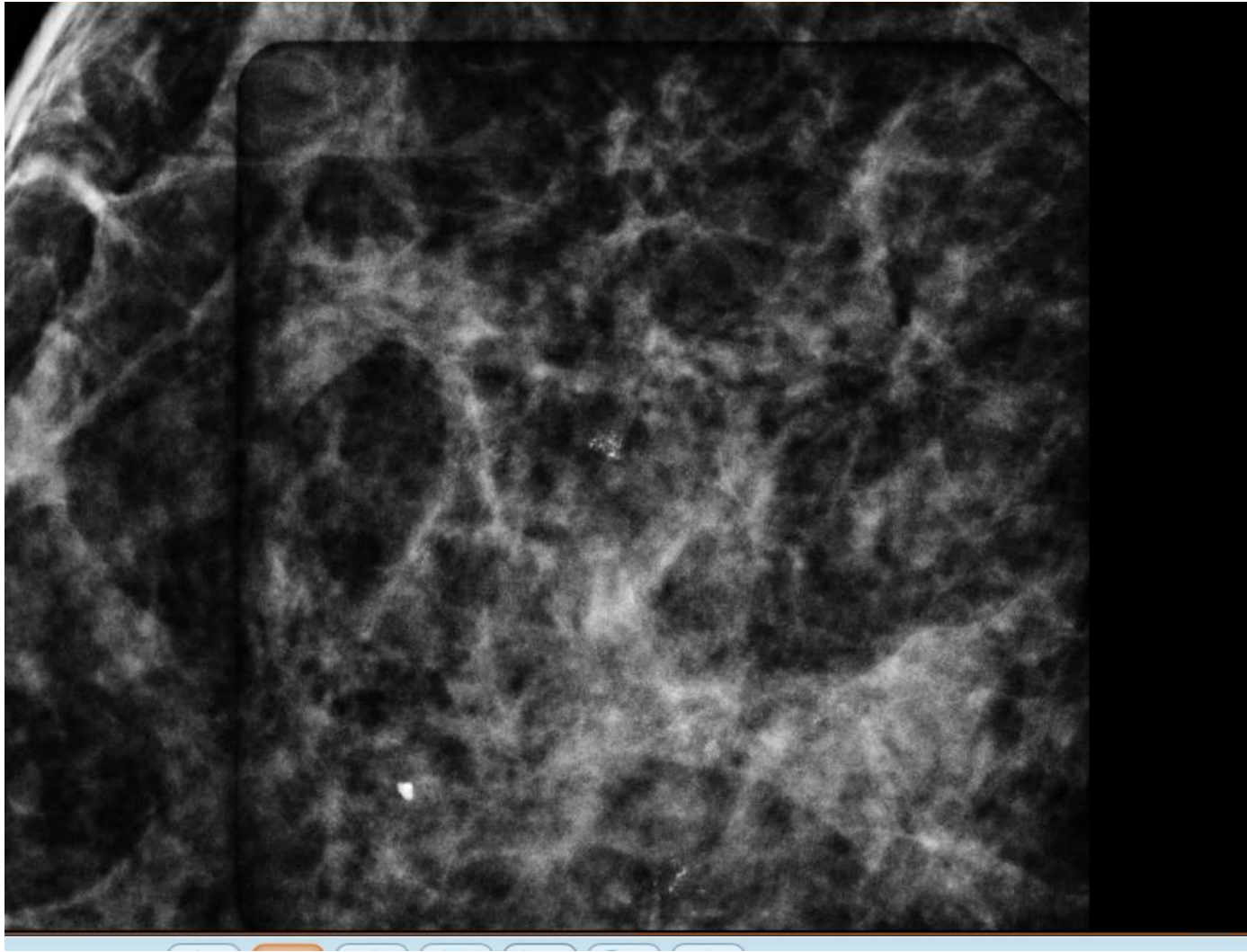
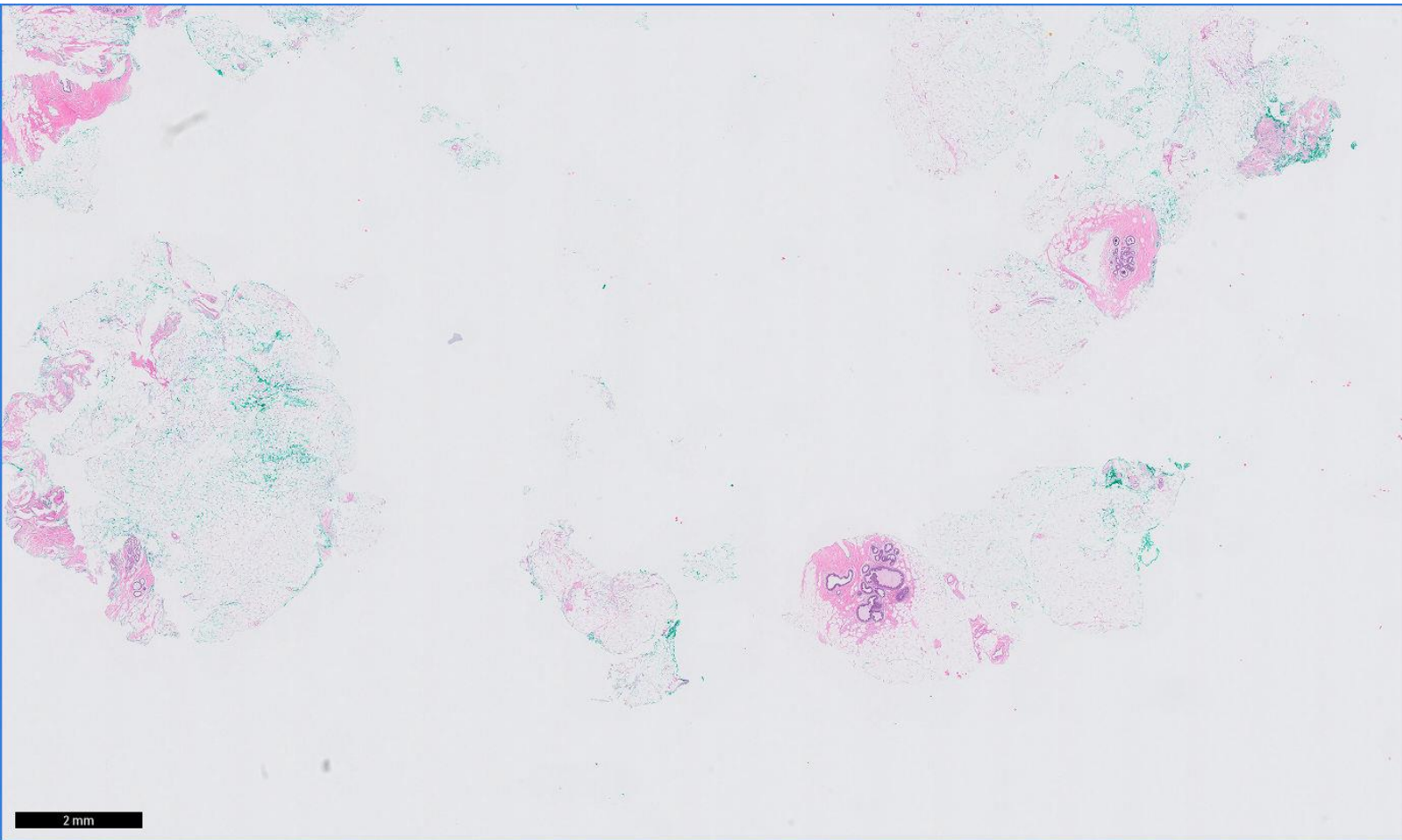


- 48 yo Female
- Pte mammo, Left breast: small cluster of punctate and heterogeneous microcalcifications







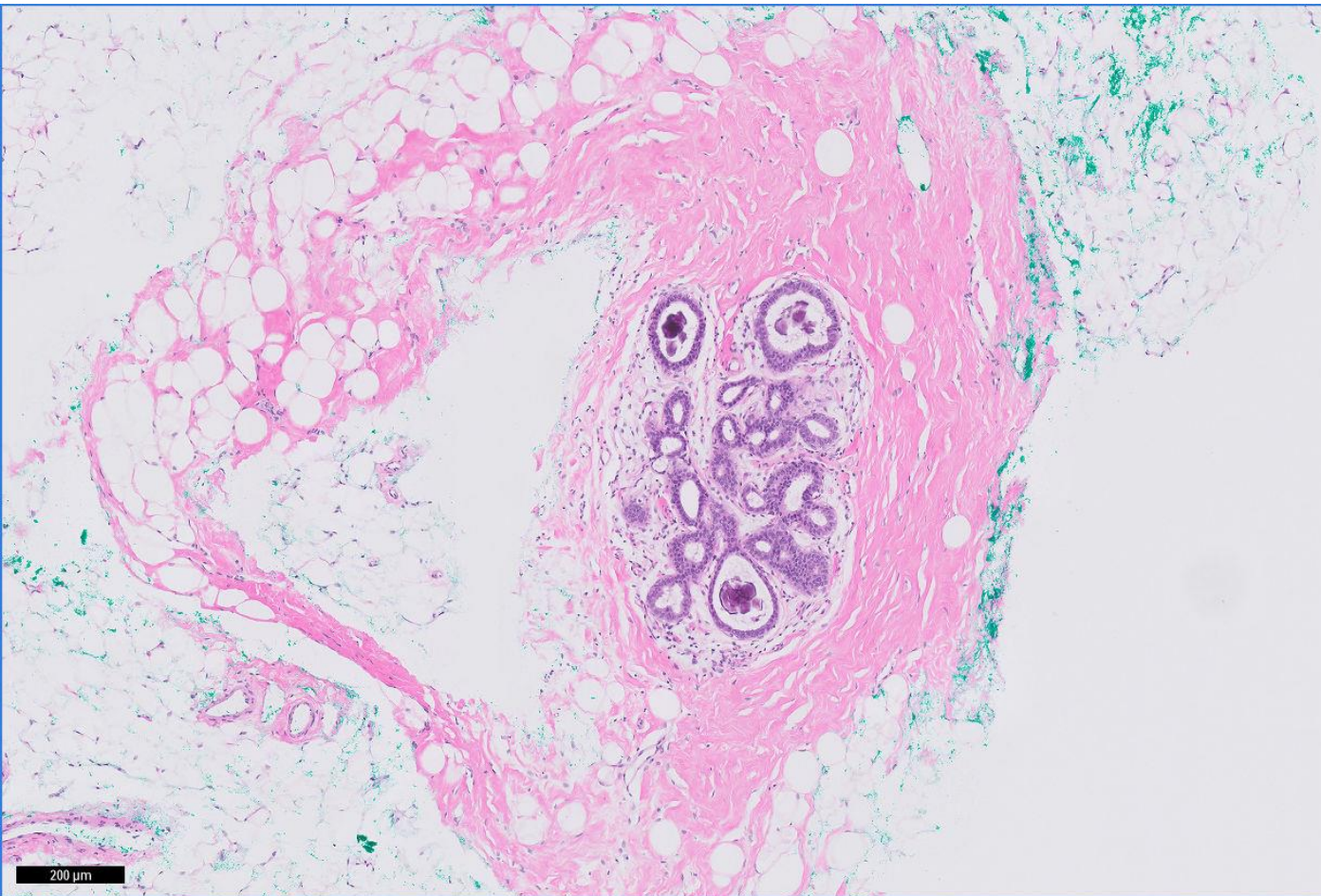
► Zoom 0.5x 354.816 mm<sup>2</sup>

2 mm



► Zoom 5x

5,544 mm<sup>2</sup>

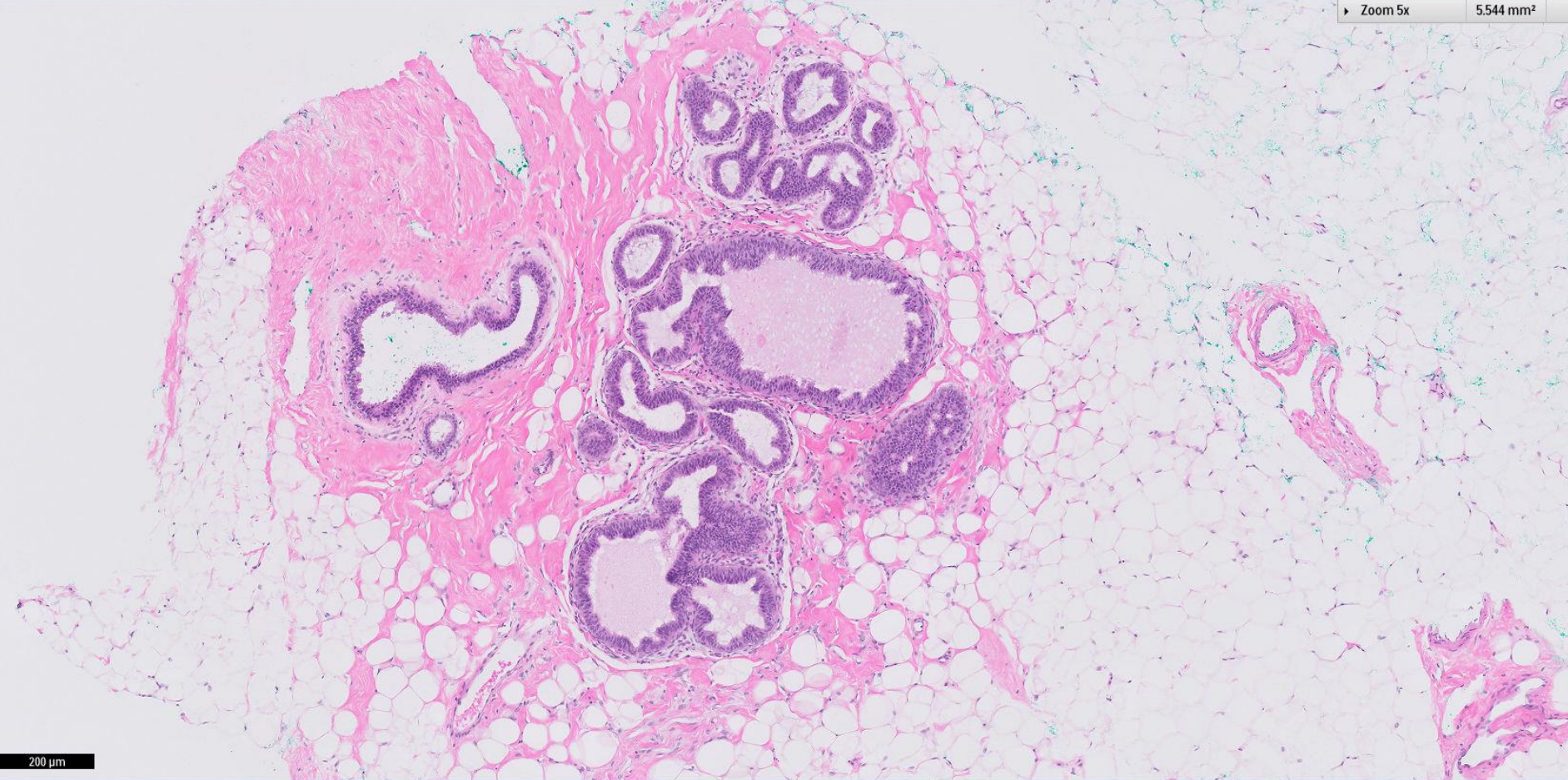


200 μm



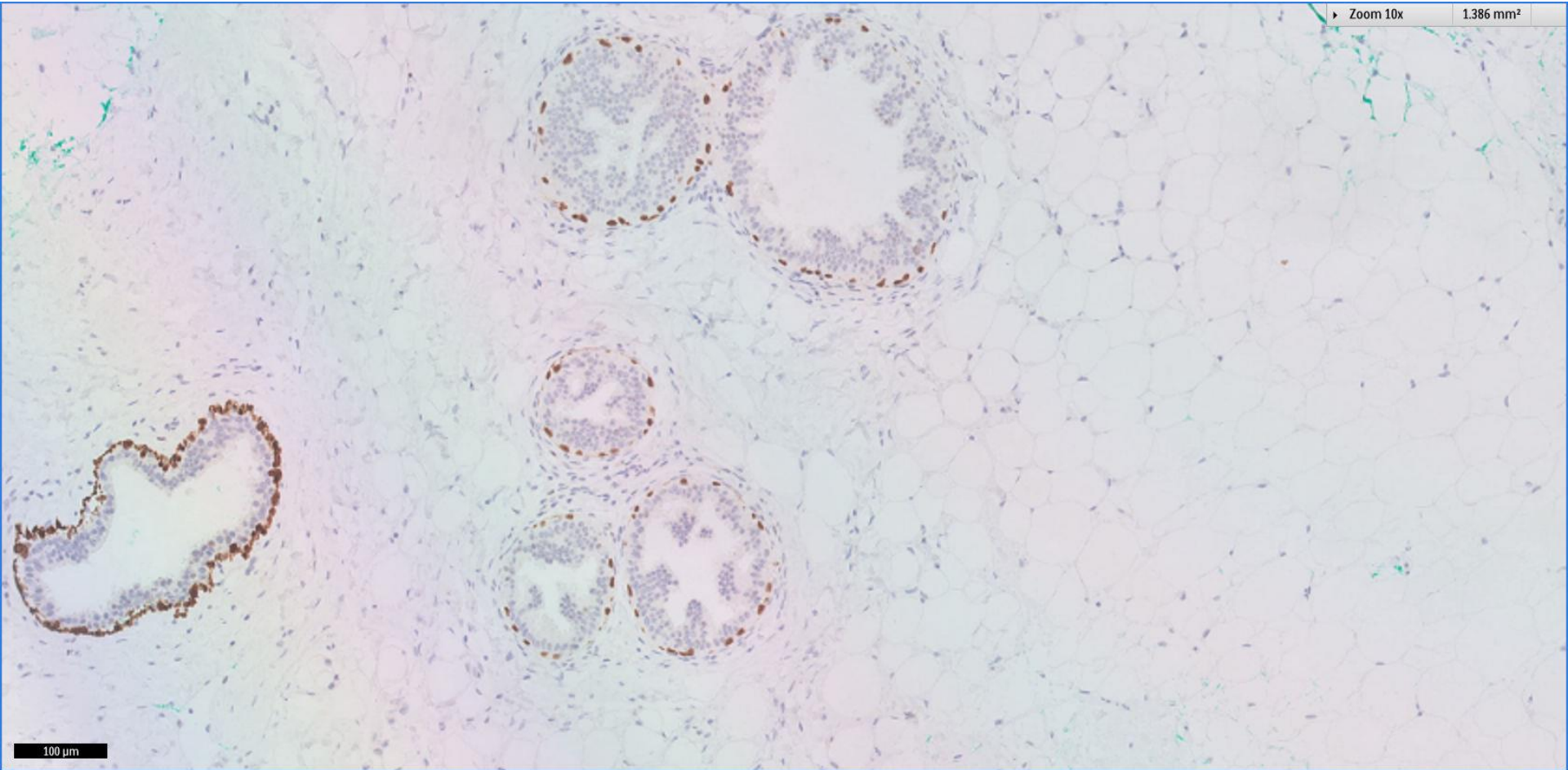
► Zoom 5x

5,544 mm<sup>2</sup>



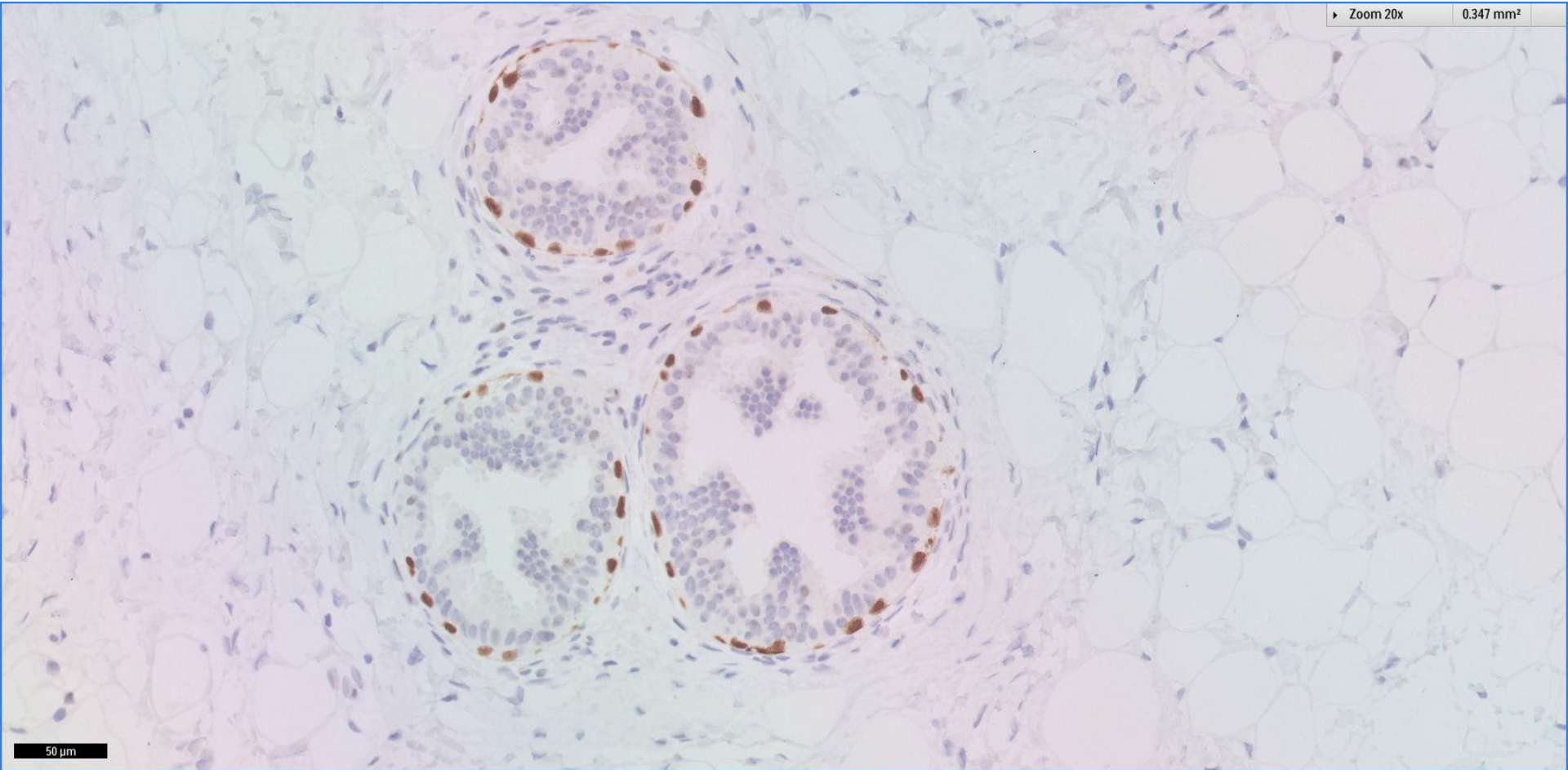
200  $\mu$ m

# P63 + CK5/6

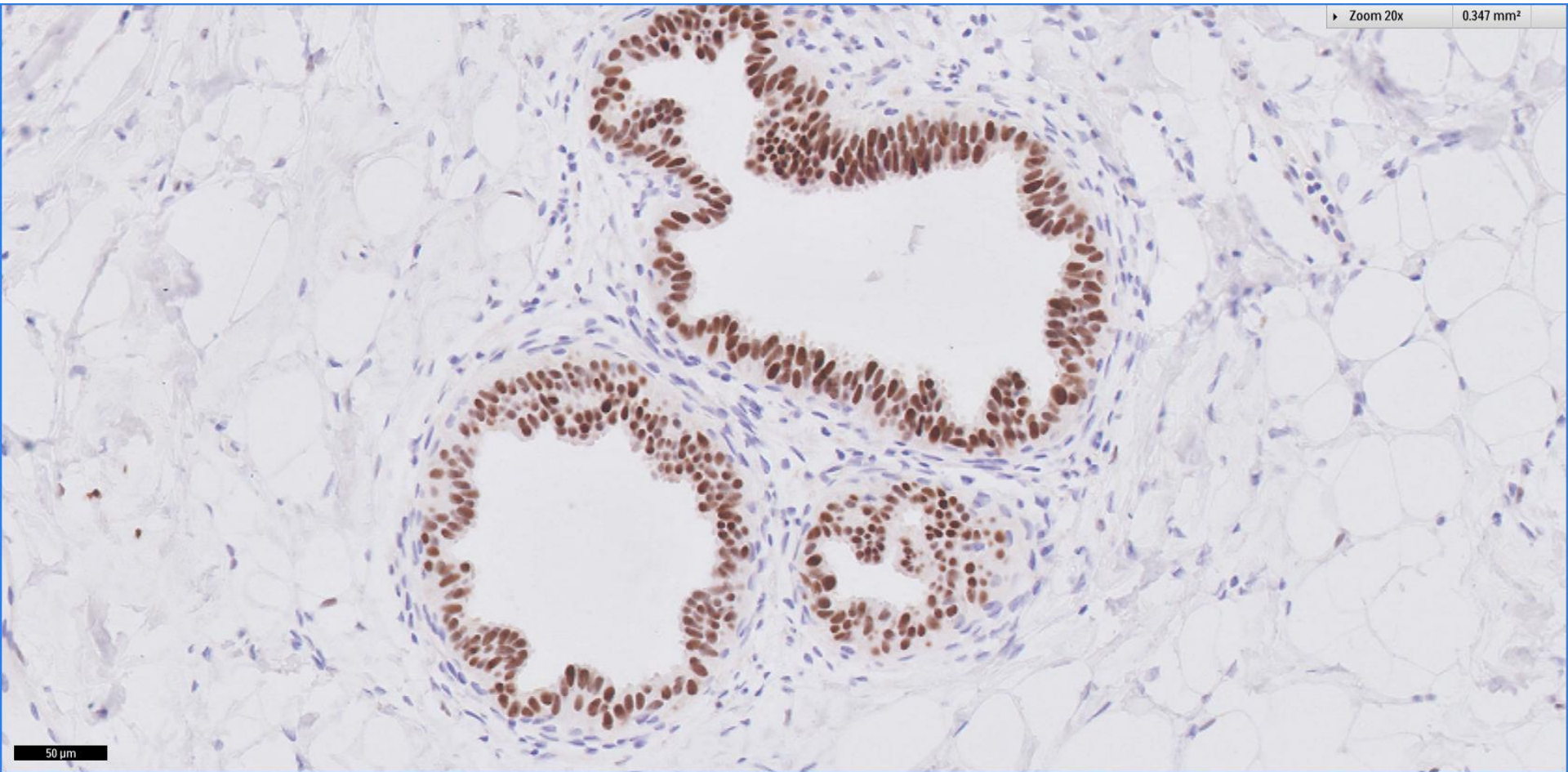




# P63 + CK5/6



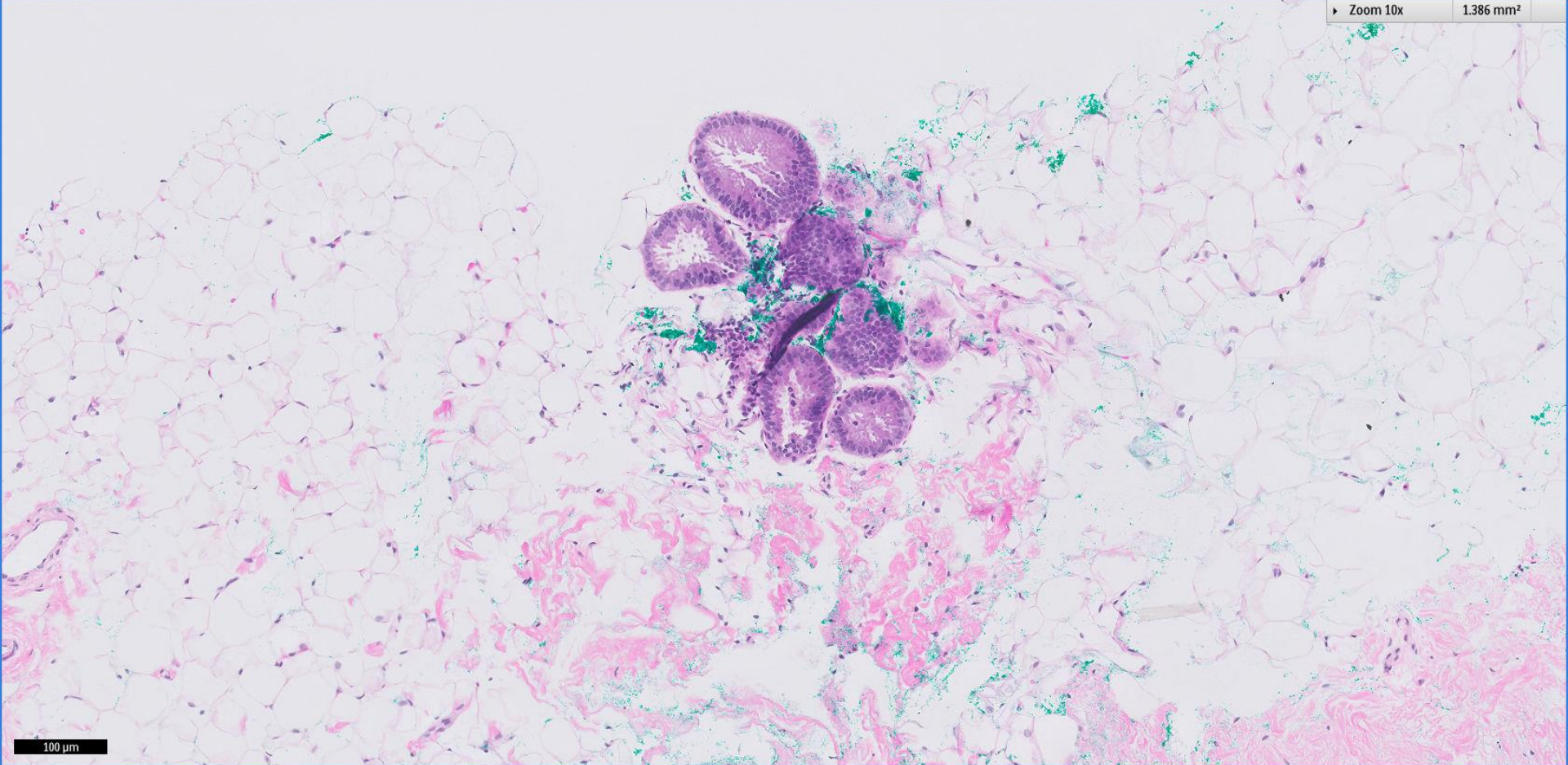
# ER





▶ Zoom 10x

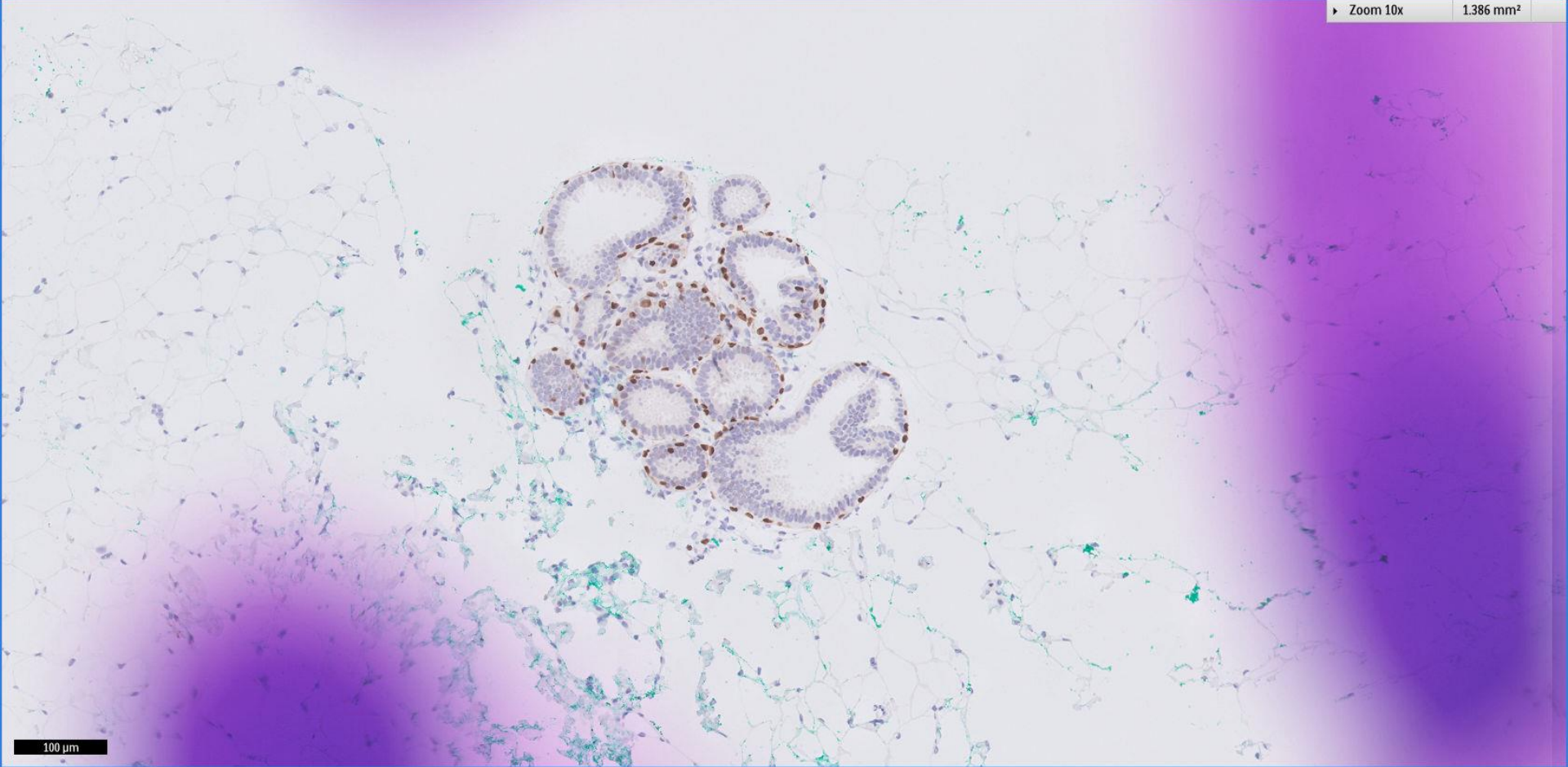
1.386 mm<sup>2</sup>



100 μm

▶ Zoom 10x

1.386 mm<sup>2</sup>

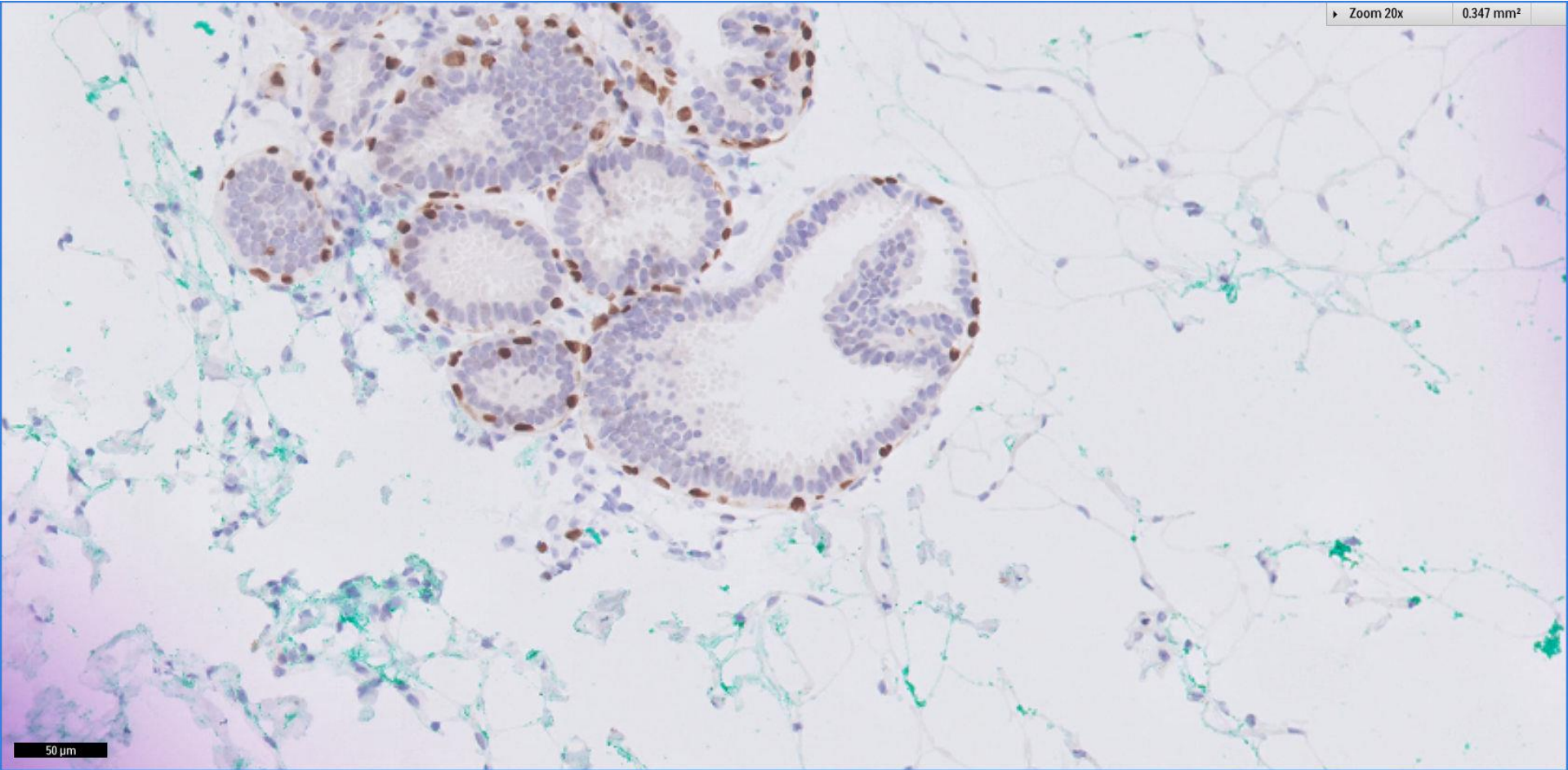


100  $\mu$ m



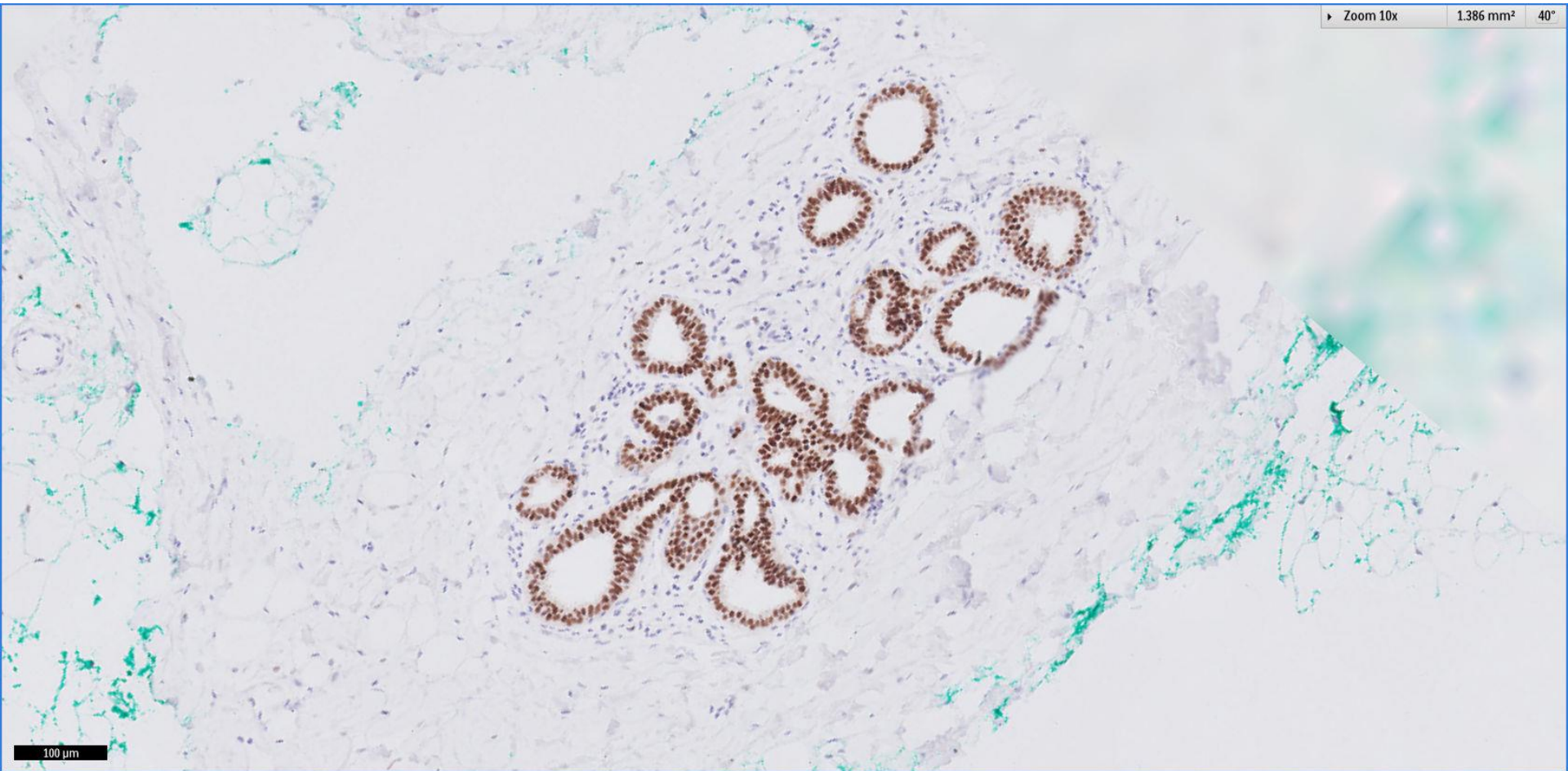
► Zoom 20x

0.347 mm<sup>2</sup>



50 µm





100 μm

## Question 5.1

What is your diagnosis?

- A. Benign
- B. Malignant
- C. Atypical

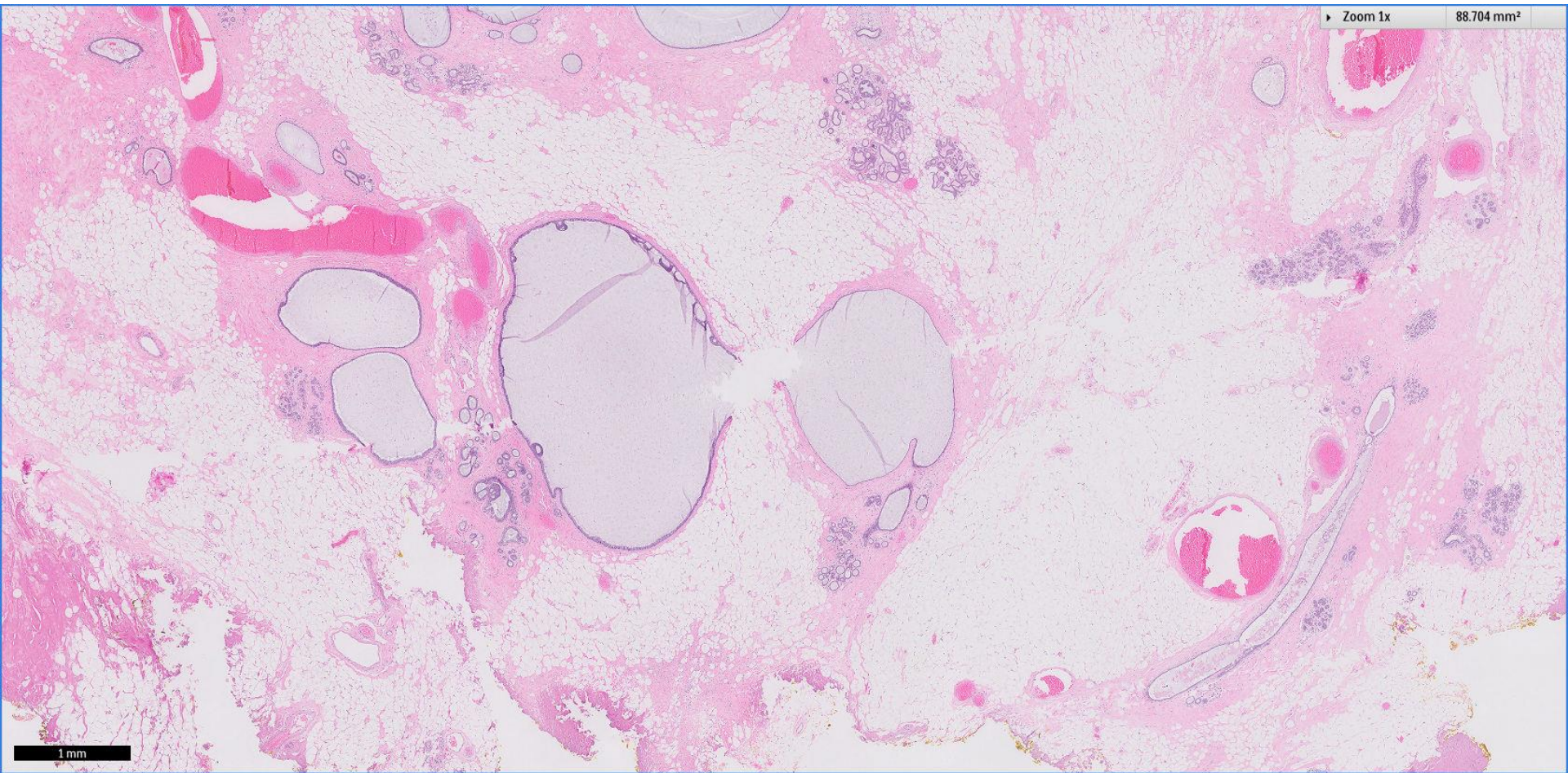
# Diagnosis

Left superior breast, ST VAB:

- Focal atypical intraductal proliferation, in keeping with atypical ductal hyperplasia (ADH)
- Calcifications identified



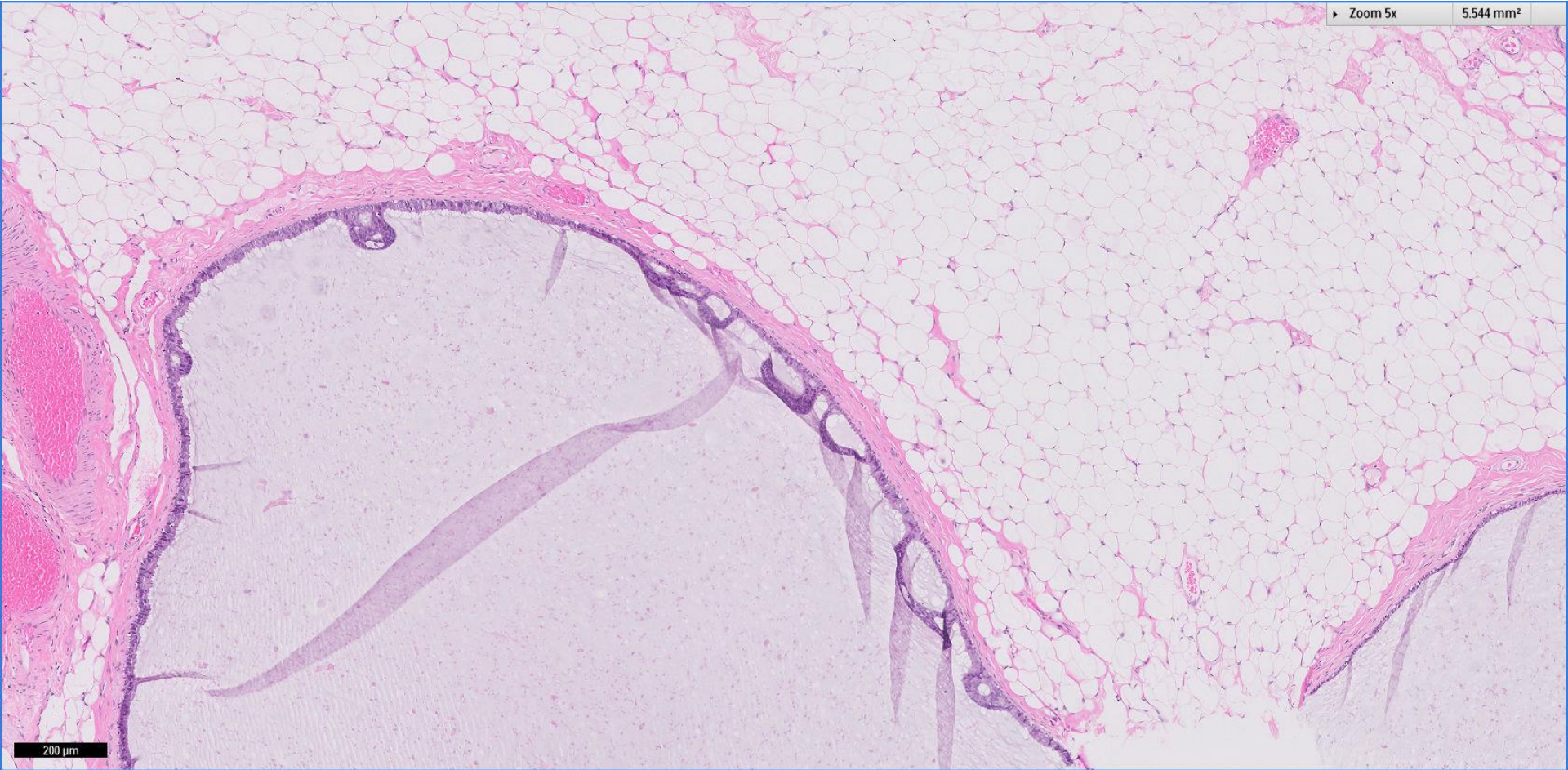
# Excision was performed





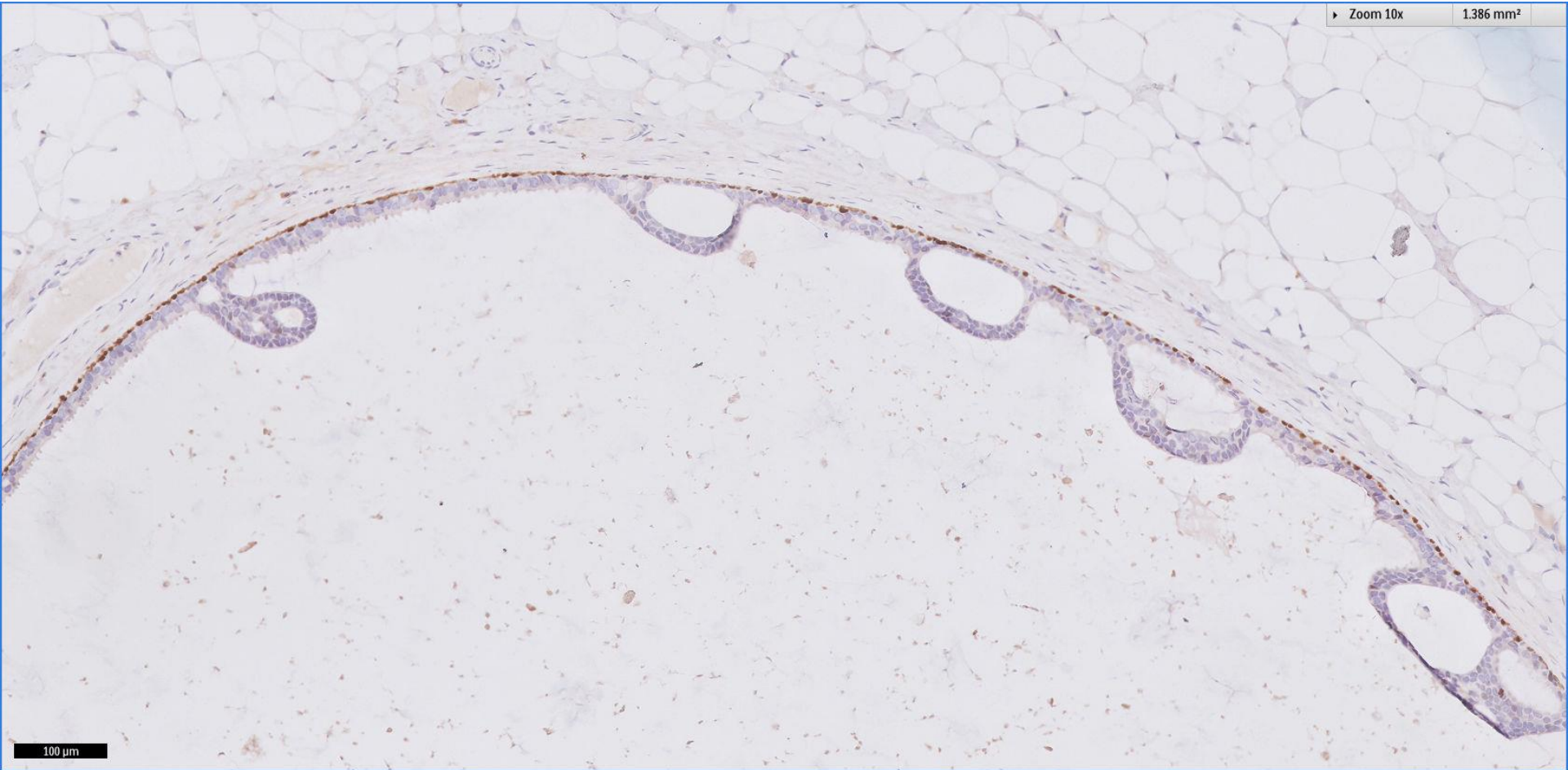
► Zoom 5x

5,544 mm<sup>2</sup>



200 μm

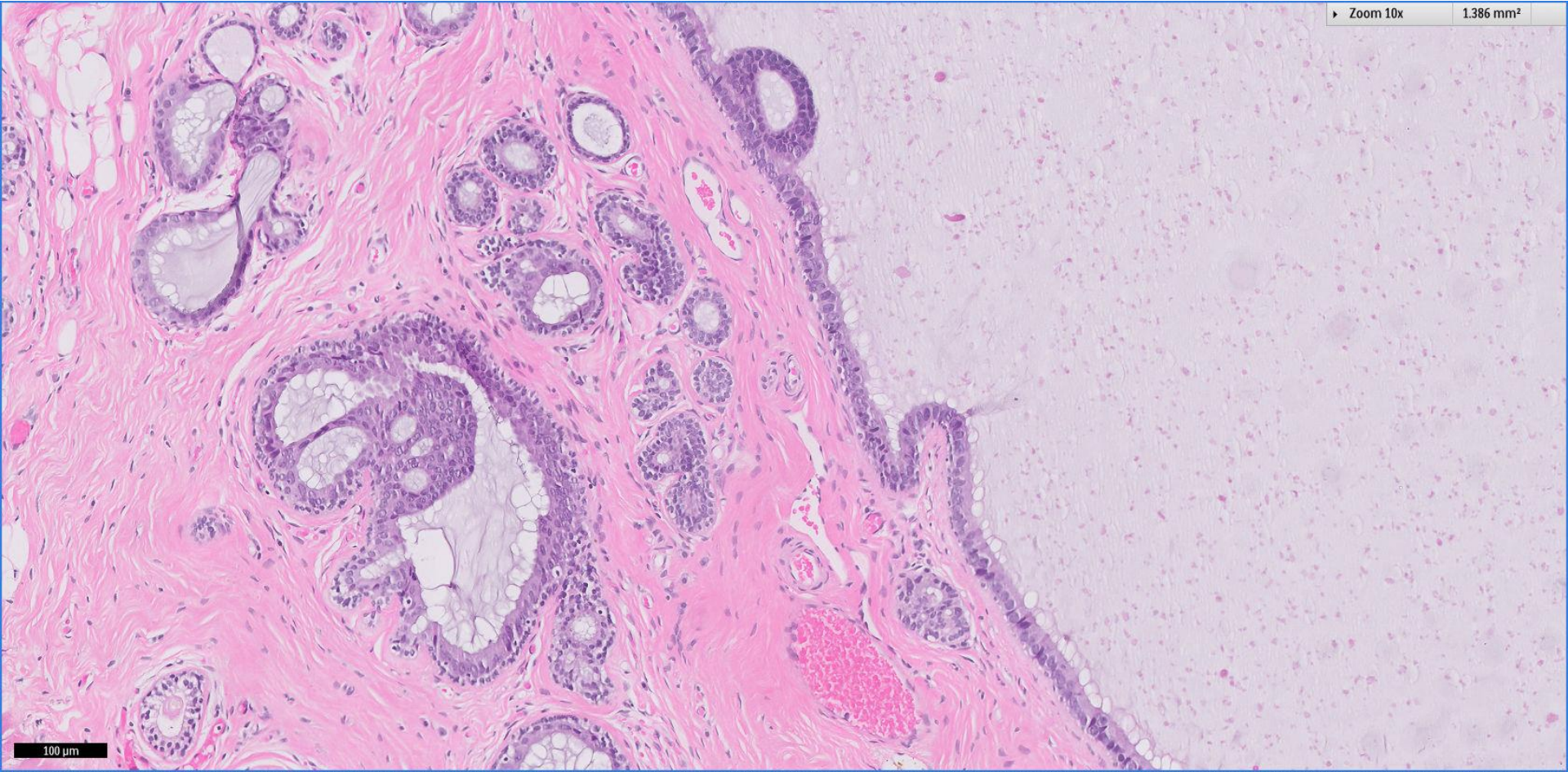
# P63 + CK14





▶ Zoom 10x

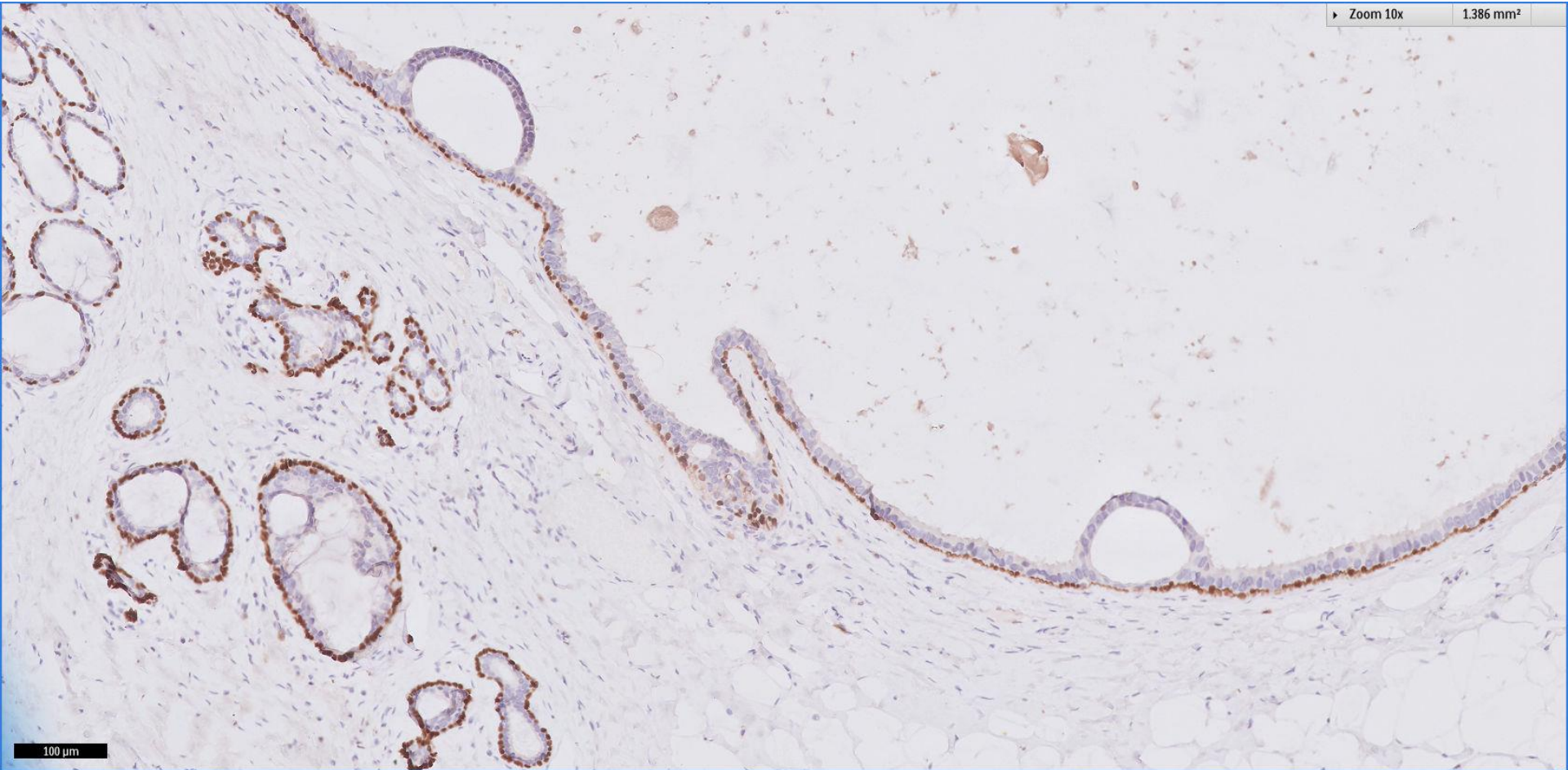
1.386 mm<sup>2</sup>



100 μm



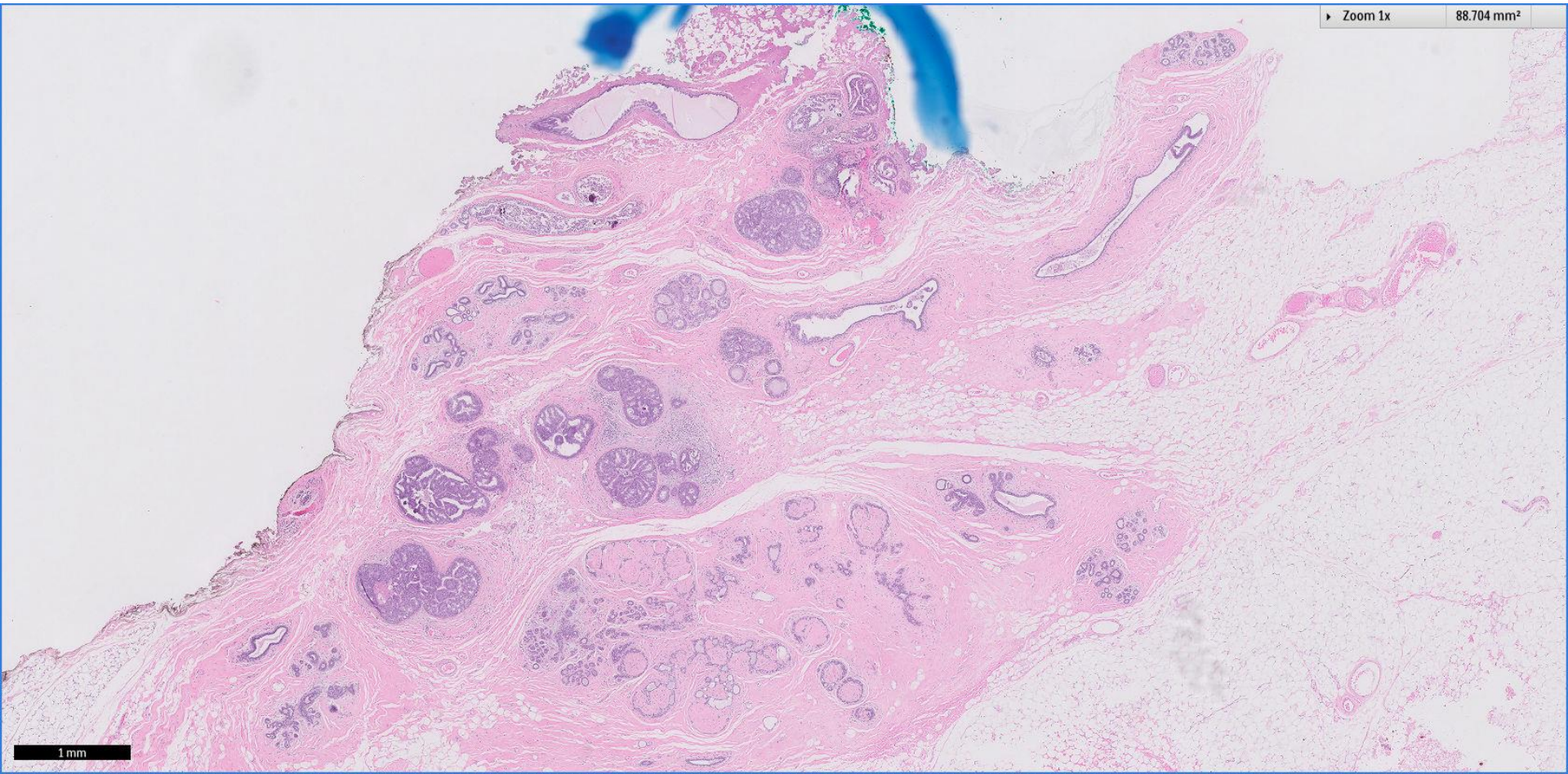
# P63 + CK14





Zoom 1x

88.704 mm<sup>2</sup>

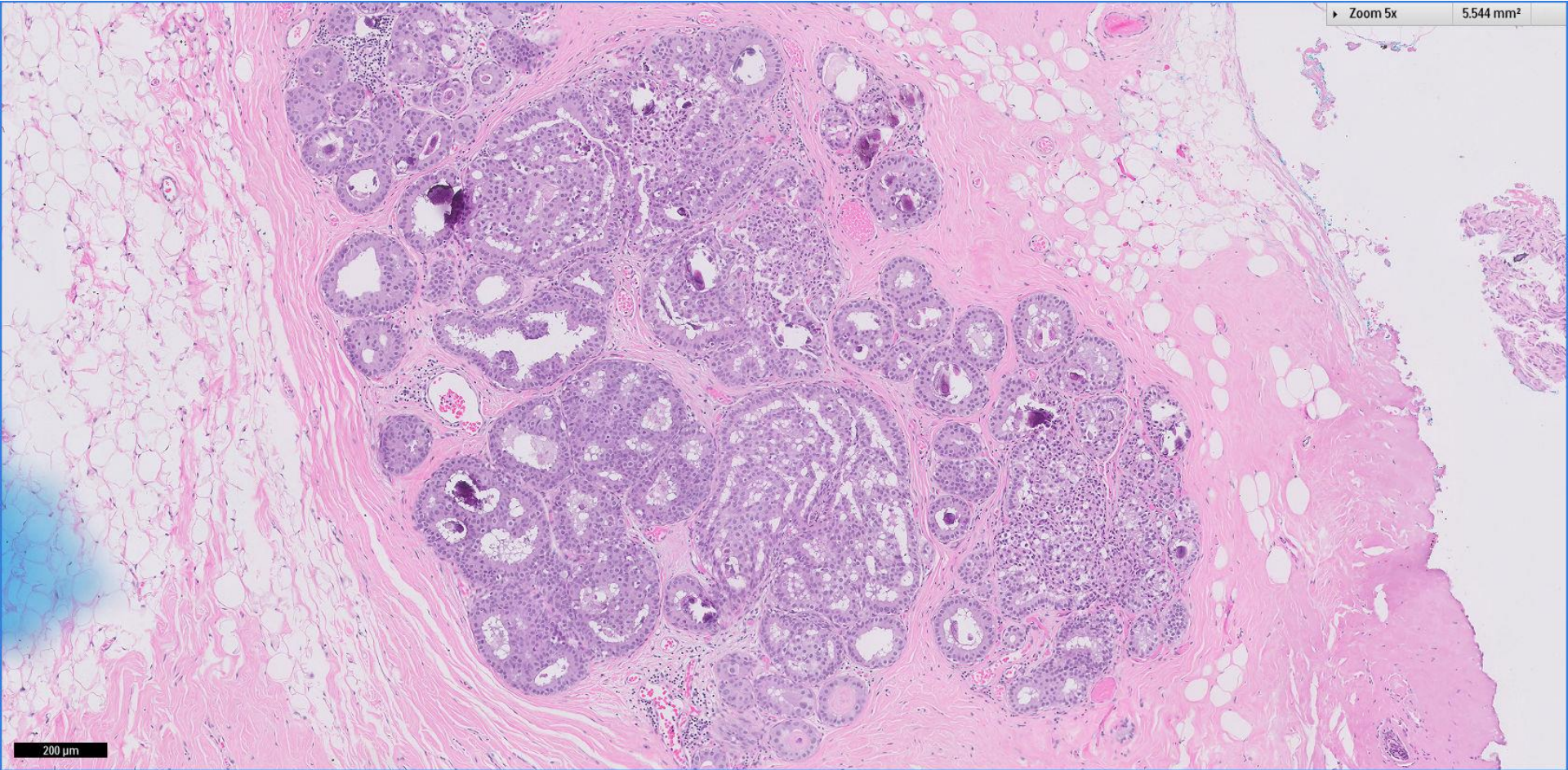


1 mm



Zoom 5x

5,544 mm<sup>2</sup>

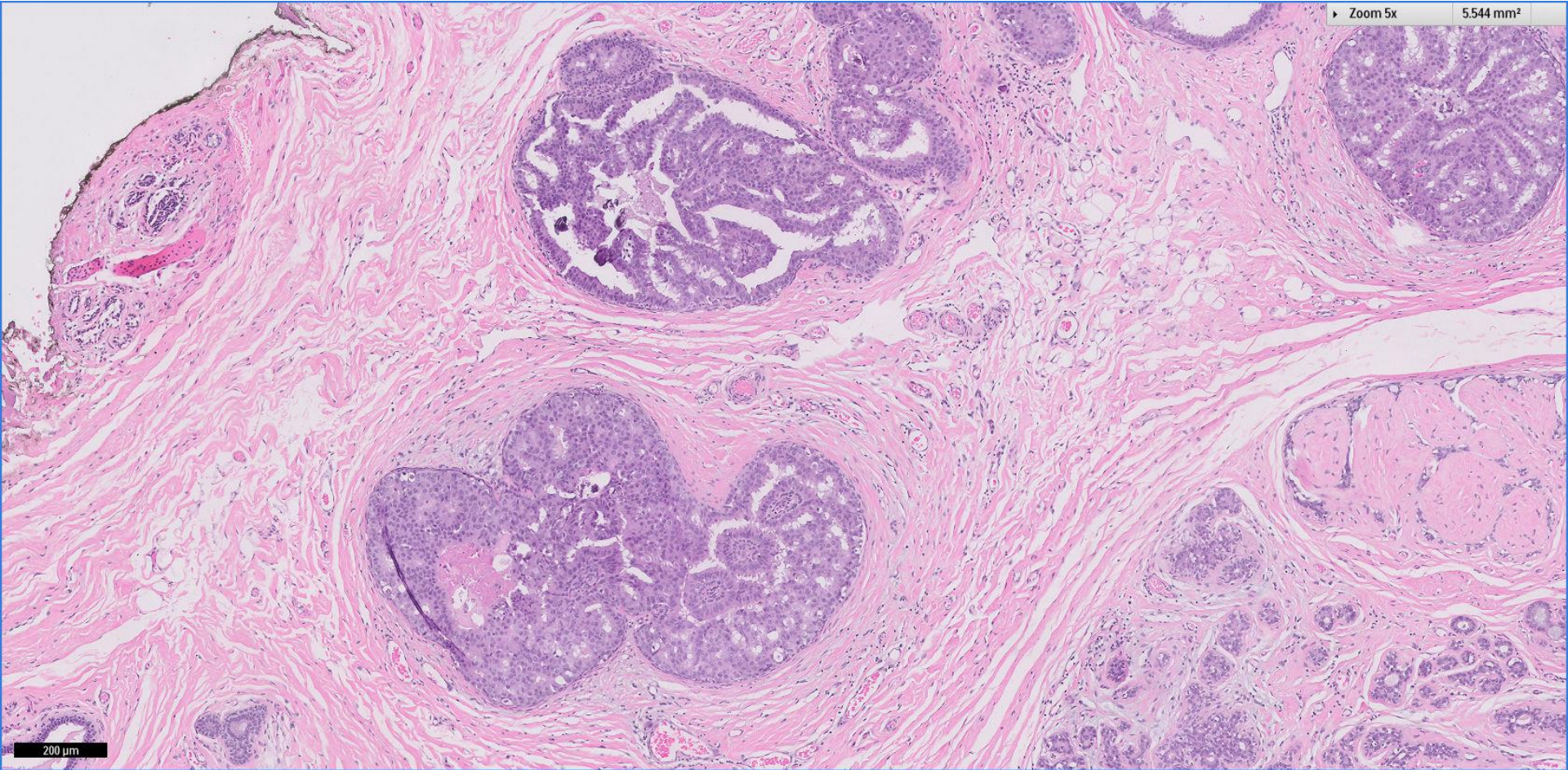


200 μm



► Zoom 5x

5,544 mm<sup>2</sup>



200 μm

# Diagnosis

Left breast, excision biopsy

- Multifocal DCIS, low to intermediate grade with calcifications
- Largest focus of DCIS measures 9mm