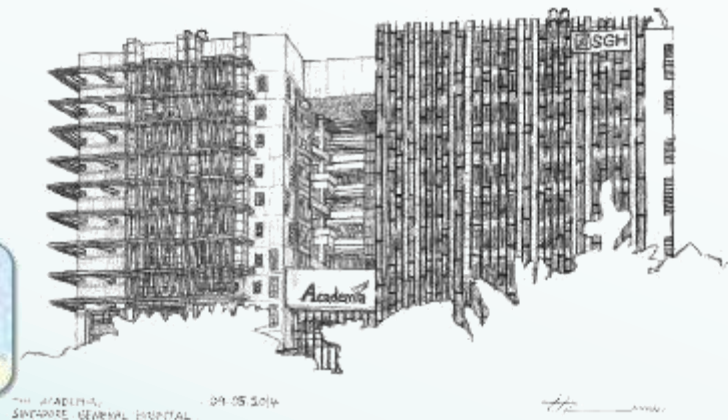
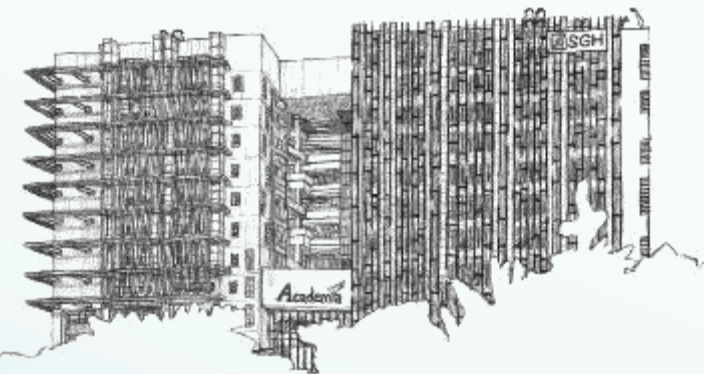


- 35yo Chinese female
- Left nipple discharge



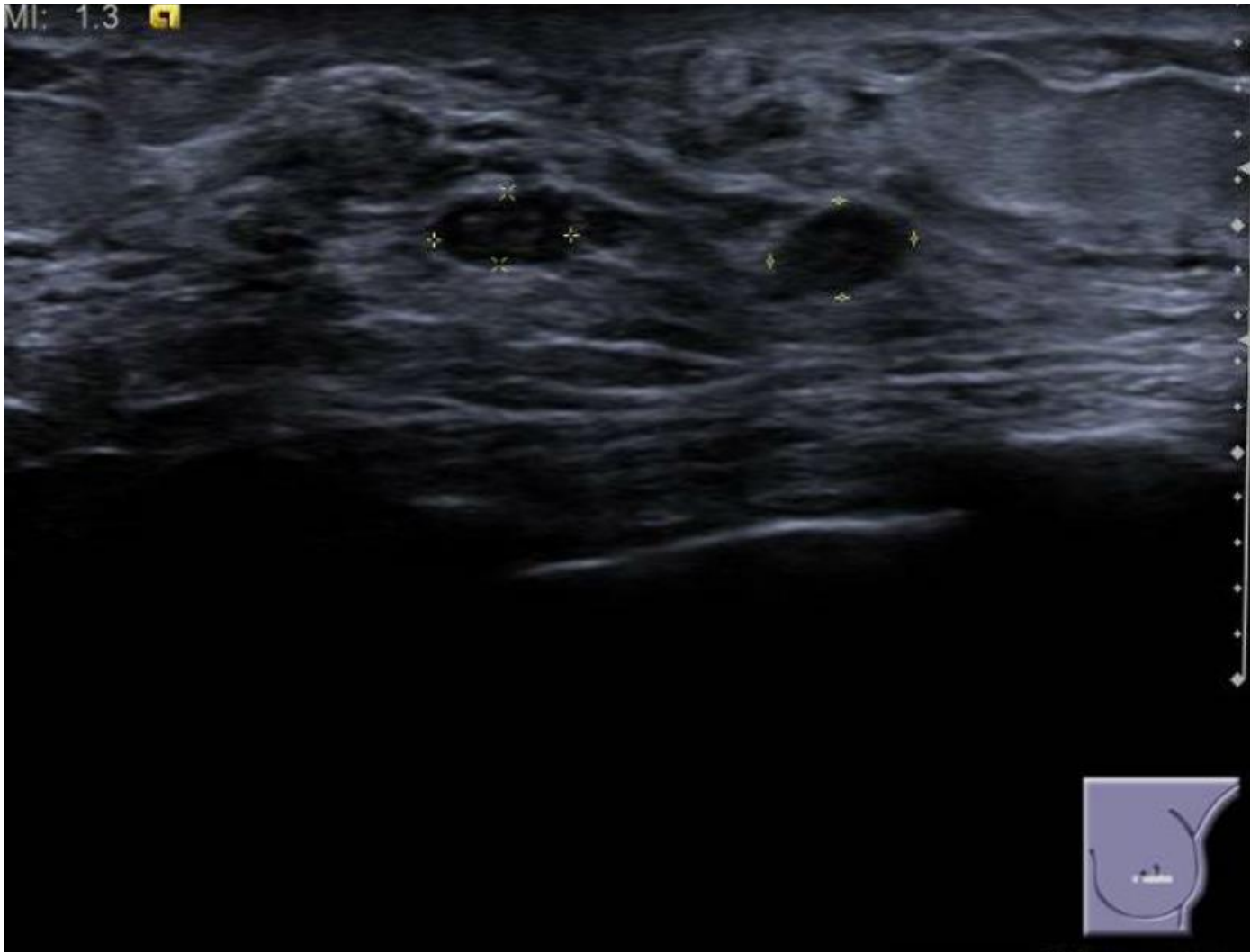
- US shows possible ductal periareolar nodules:
- At the 330 o'clock position, 14 mm from nipple, there is a 10 x 5 x 8 mm palpable nodule with increased vascularity.
- 5 o'clock position 20 mm from nipple, there is a 10 x 6 x 4 mm nodule.
- 6 o'clock position 16 mm from nipple, 6 x 3 x 8 mm nodule.



# 330oc nodule

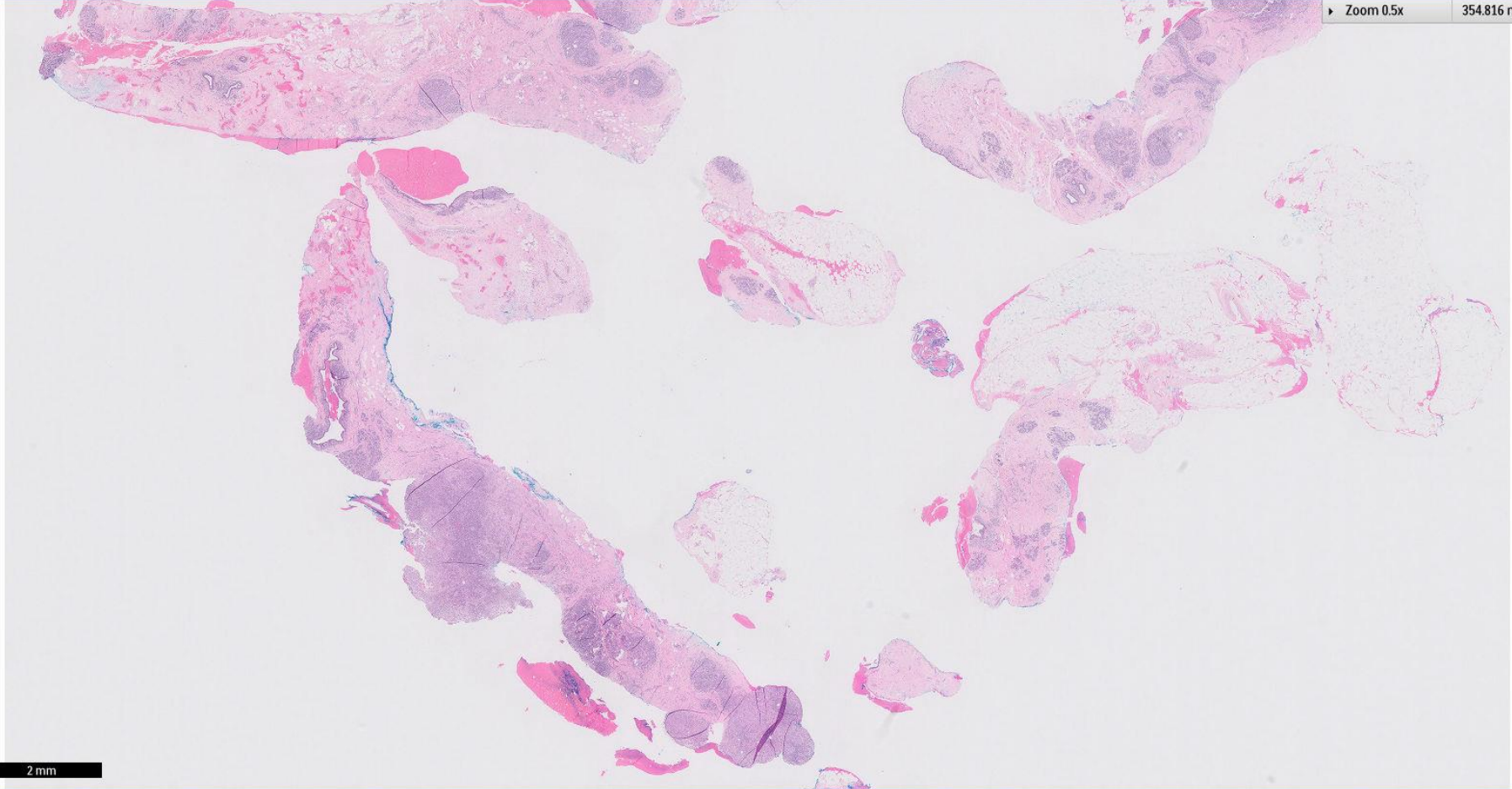


# 5 and 6 oc nodules



▶ Zoom 0.5x

354.816 mm<sup>2</sup>

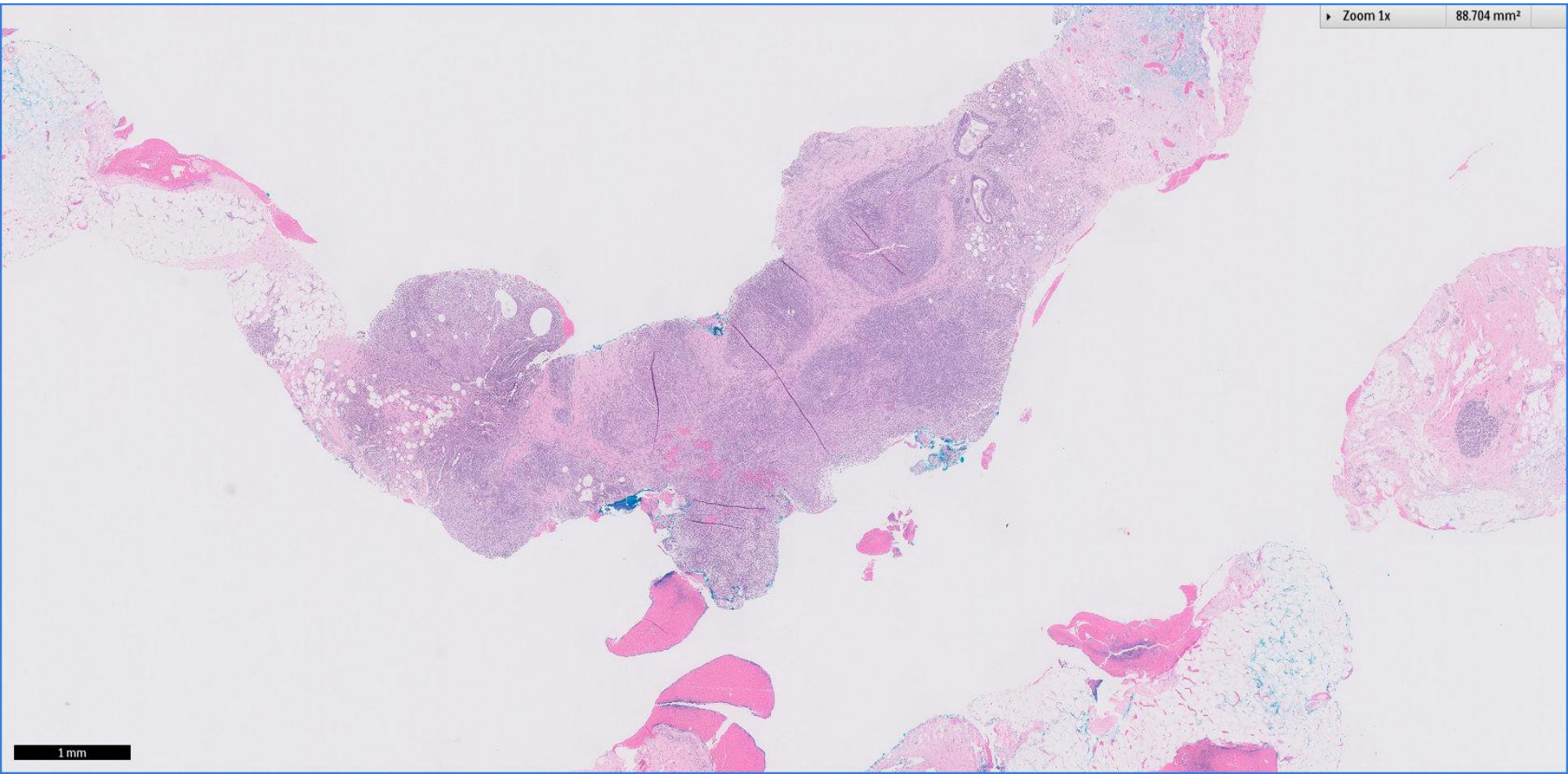


2 mm



► Zoom 1x

88.704 mm<sup>2</sup>

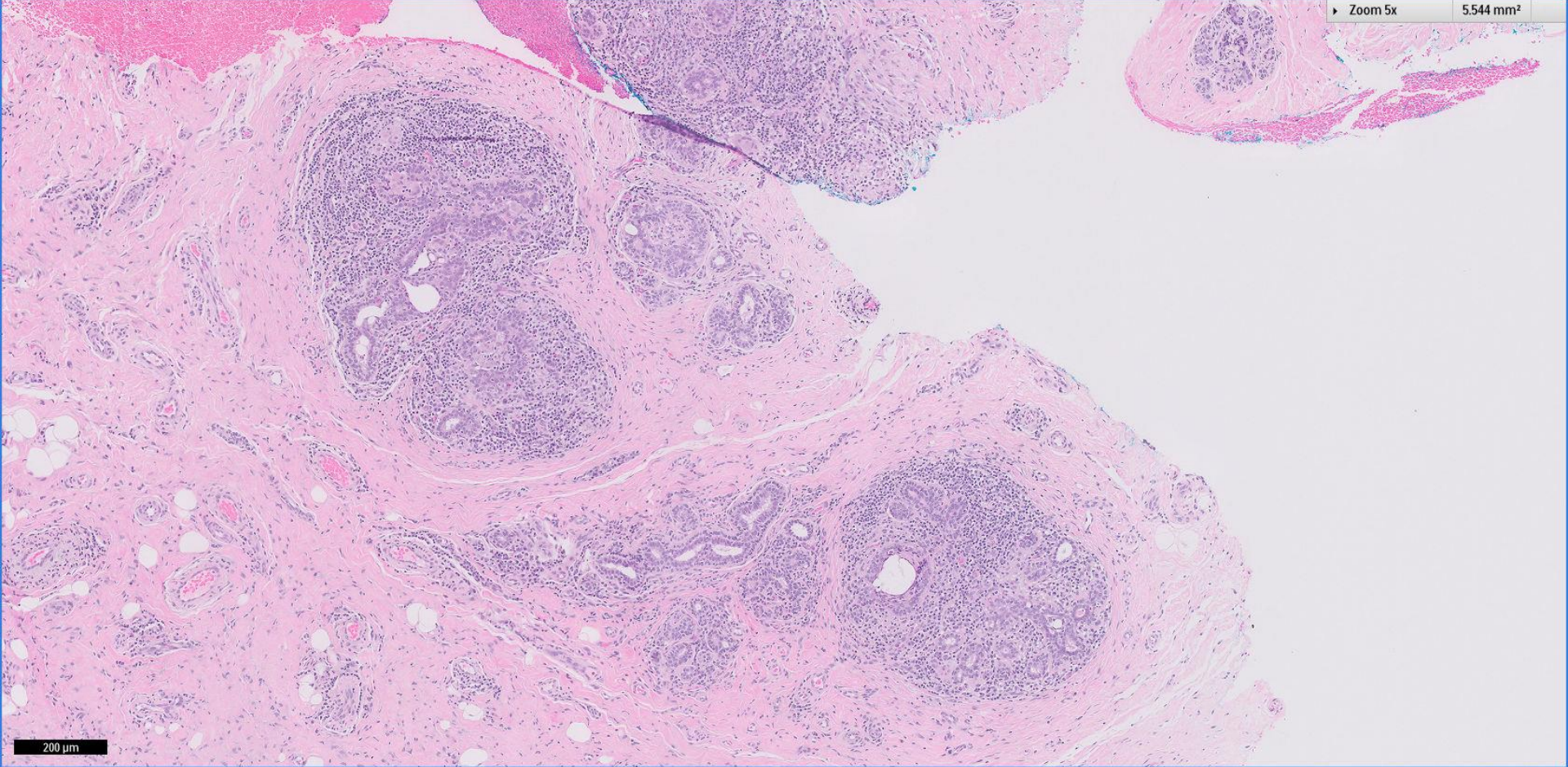


1 mm



▶ Zoom 5x

5,544 mm<sup>2</sup>

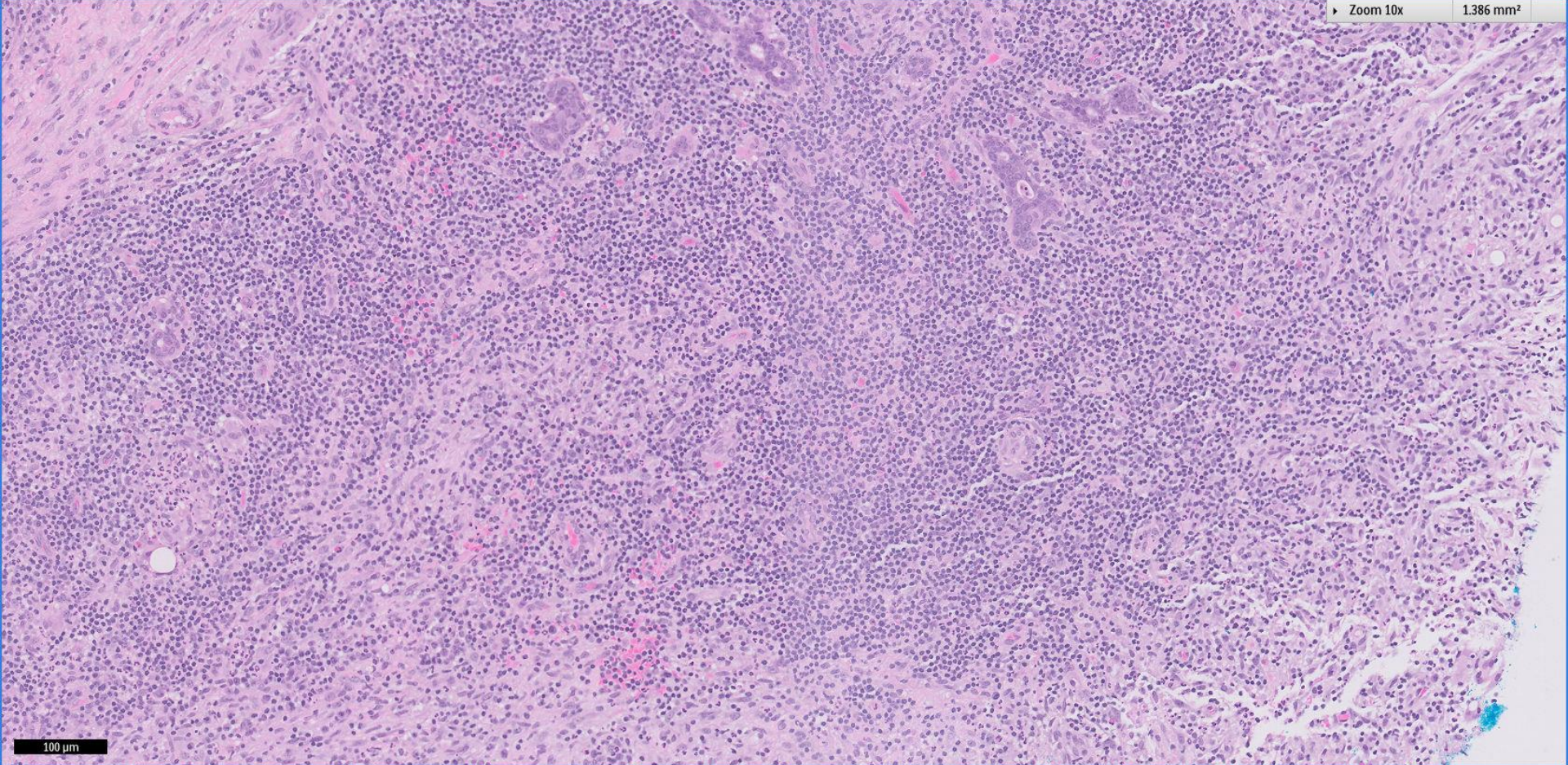


200 μm



▶ Zoom 10x

1.386 mm<sup>2</sup>

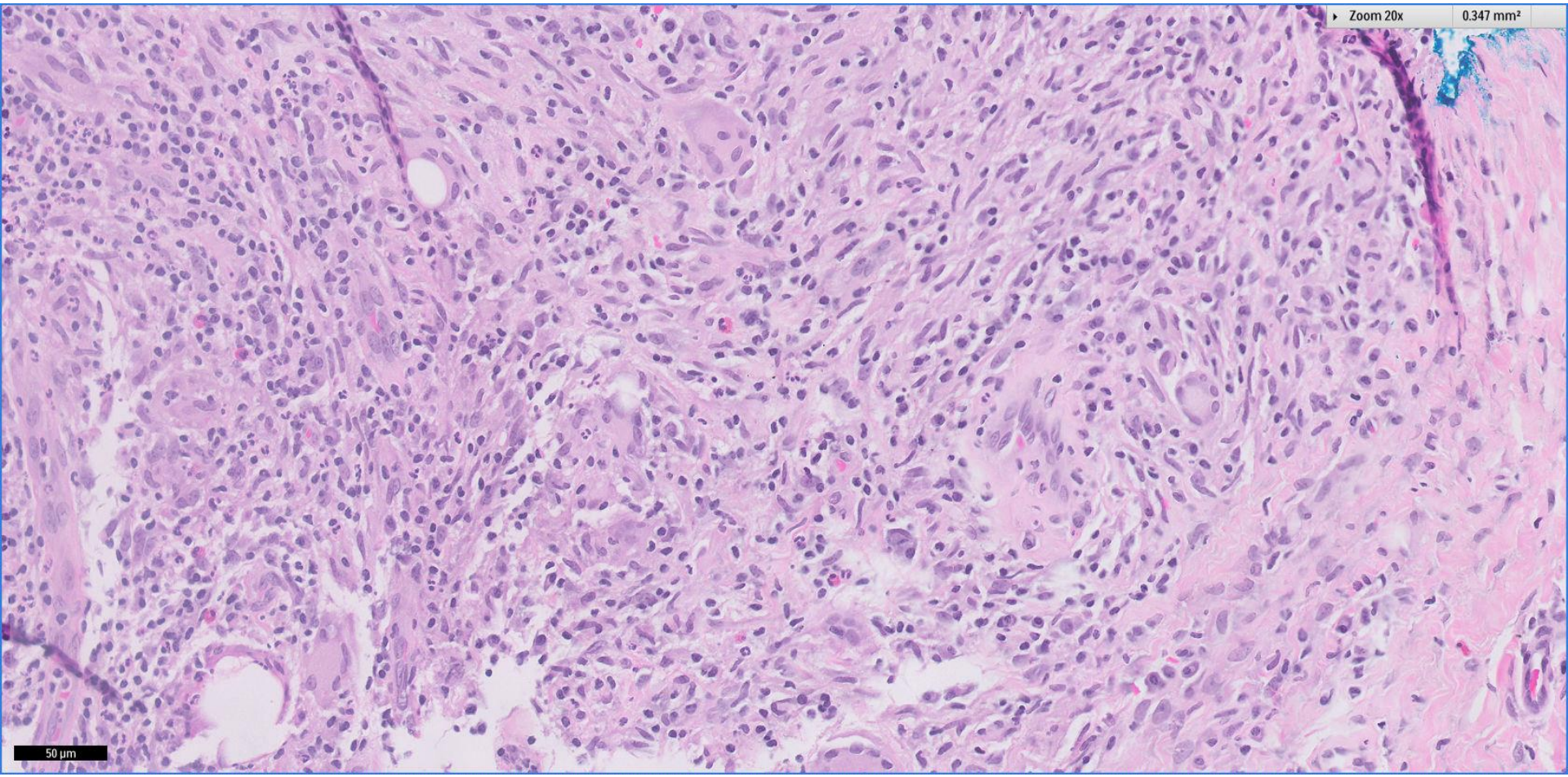


100 μm



▶ Zoom 20x

0.347 mm<sup>2</sup>

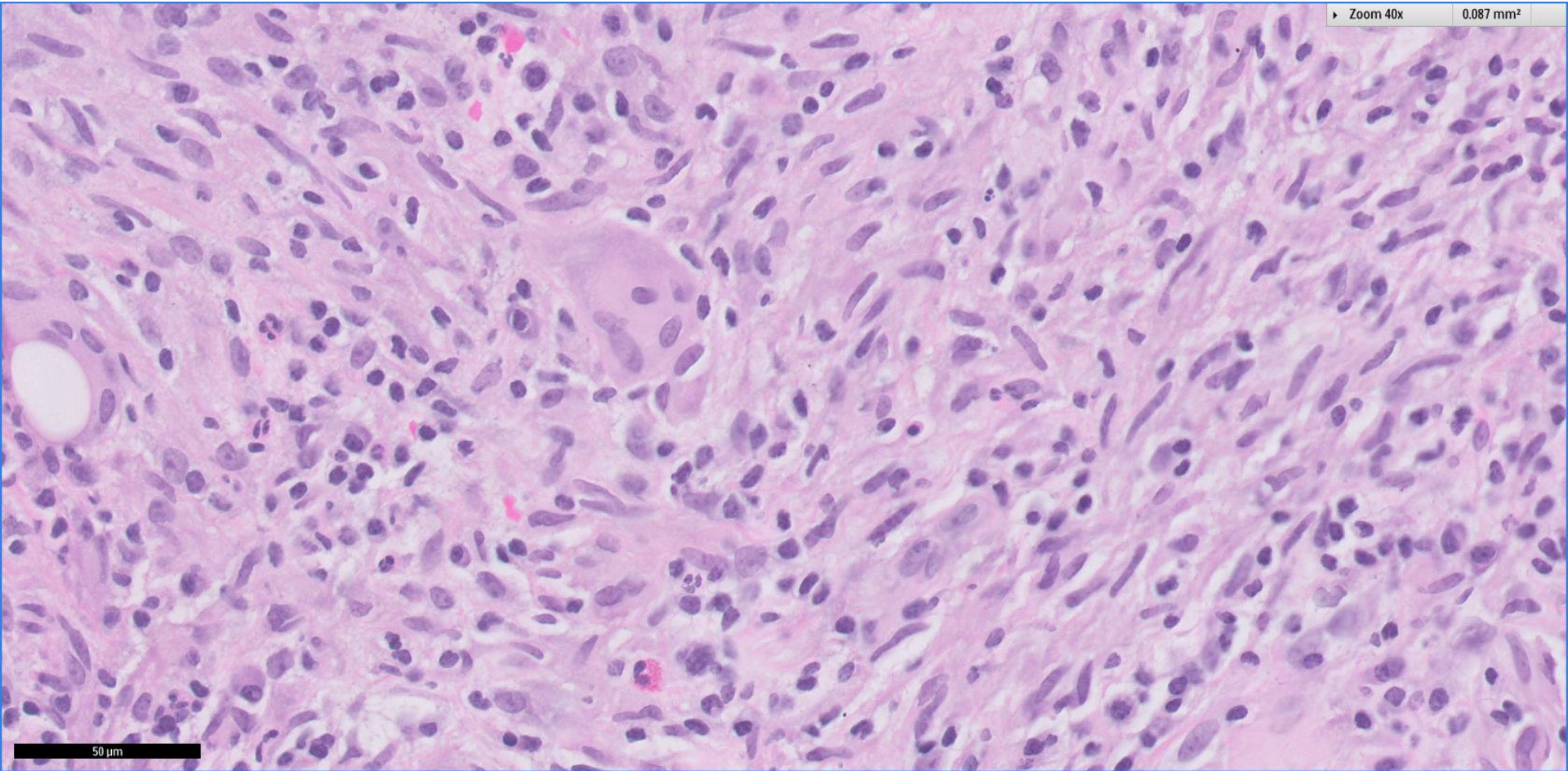


50 μm



Zoom 40x

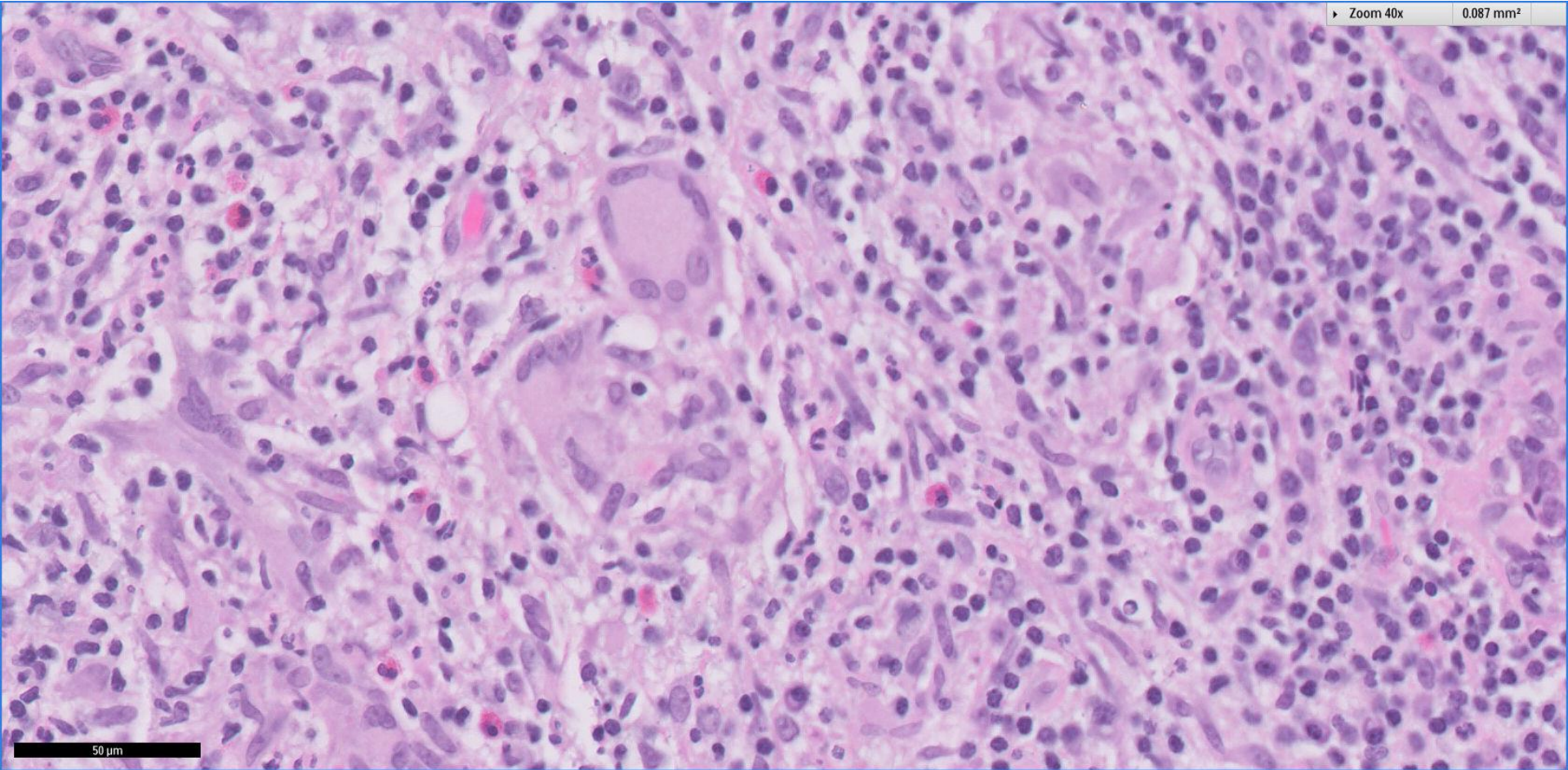
0.087 mm<sup>2</sup>





Zoom 40x

0.087 mm<sup>2</sup>



50 μm

- PAS, GMS and TB stains were negative



# Diagnosis

Left breast nodules: US GUIDED VAB:

- Acute on chronic, granulomatous inflammation

- Subsequent incision & drainage performed
  - > similar histological findings
  - >no evidence of malignancy
- Wound culture: Negative