

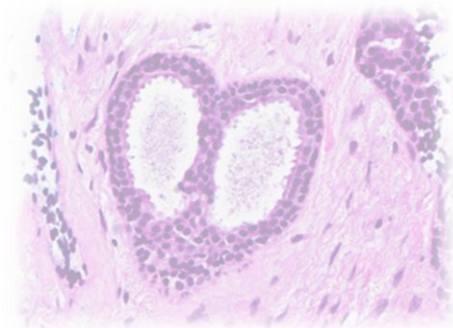
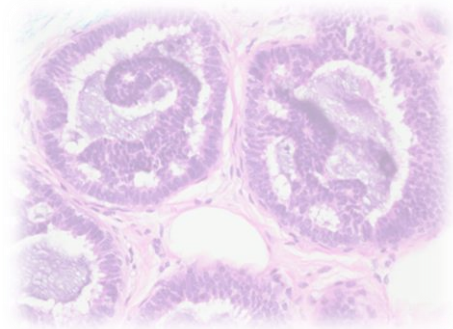
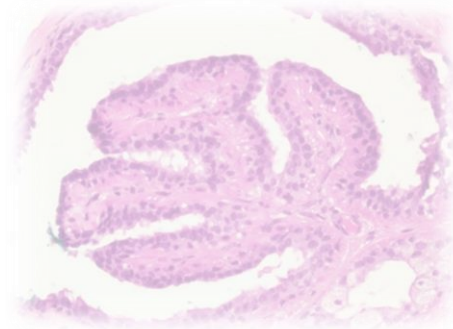
Case 32

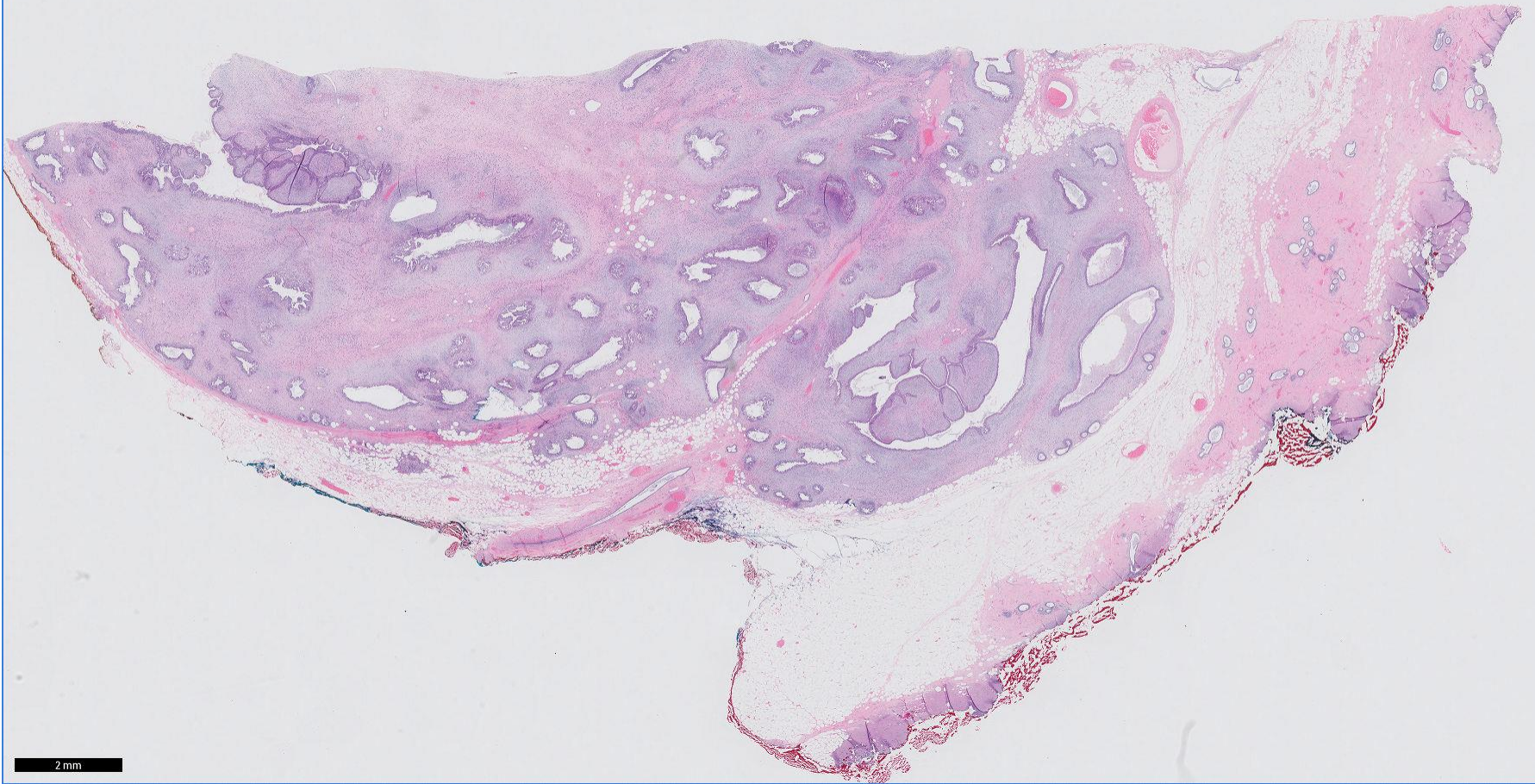
14 year old female.

Right breast 7 to 10 o'clock 5.2cm
lobulated lesion.

Clinical impression of a phyllodes tumour
vs a giant juvenile fibroadenoma.

*Contributed by Dr Mihir Gudi, Kandang Kerbau Women's
and Children's Hospital*



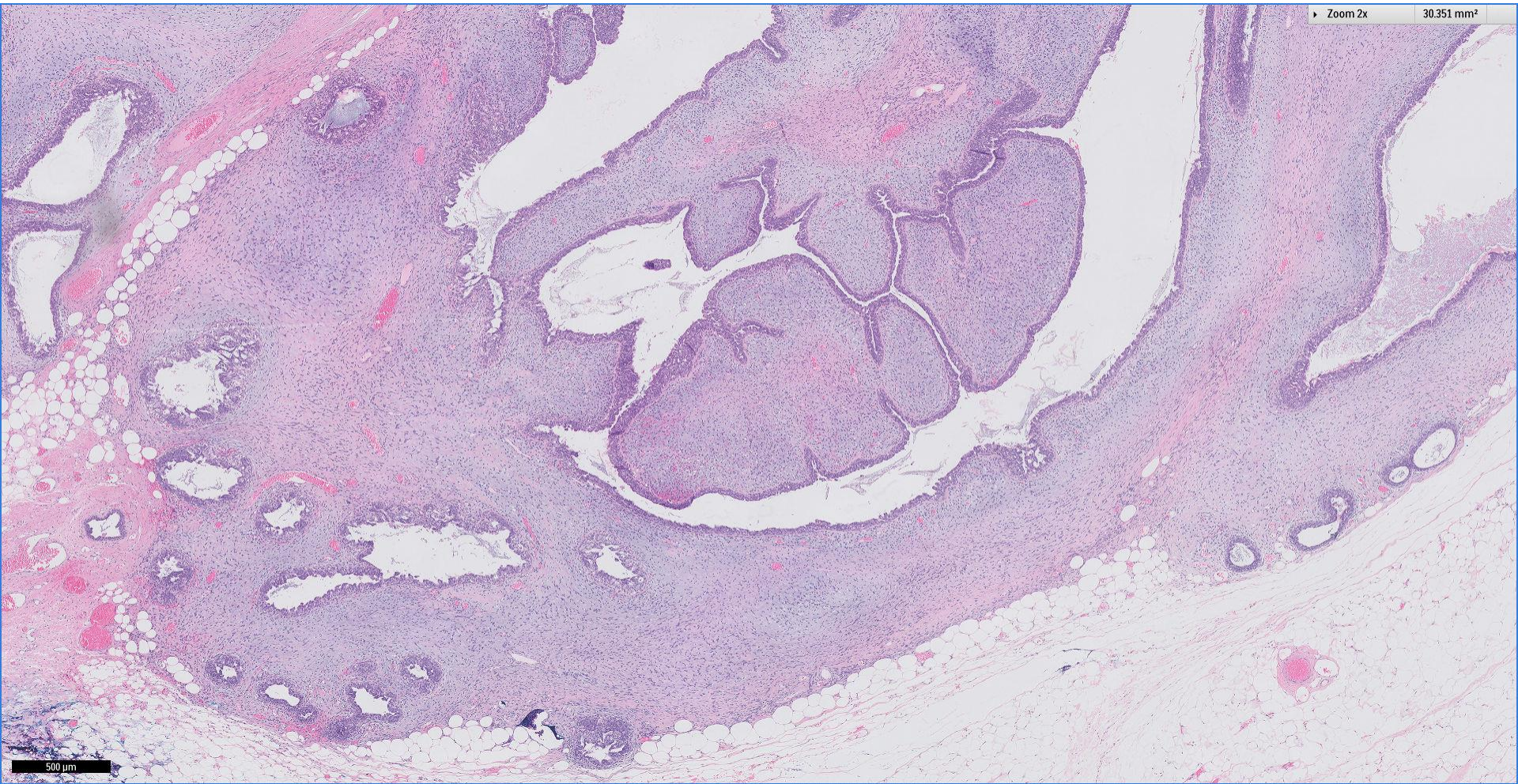


Division of Pathology
Singapore General Hospital



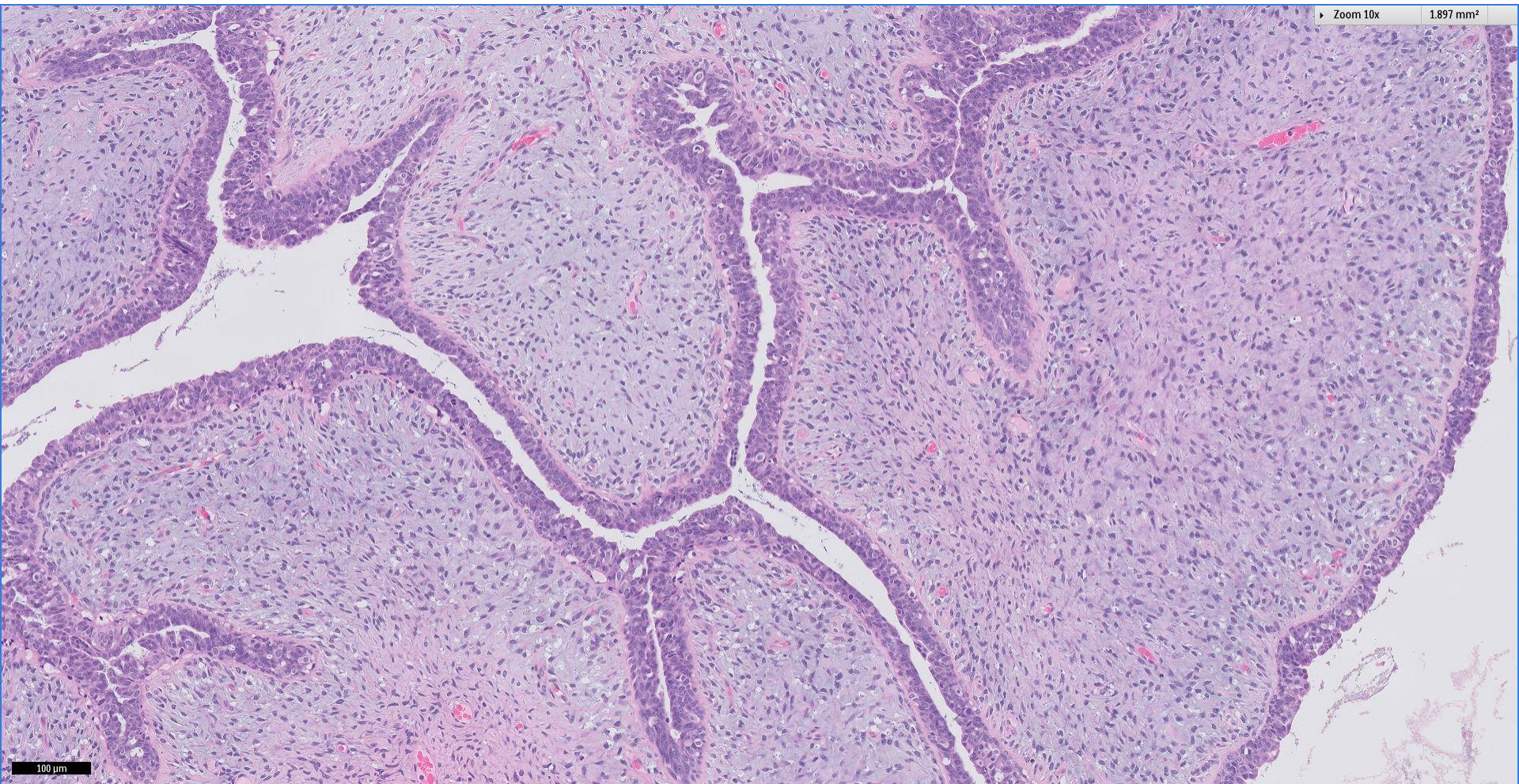
Zoom 2x

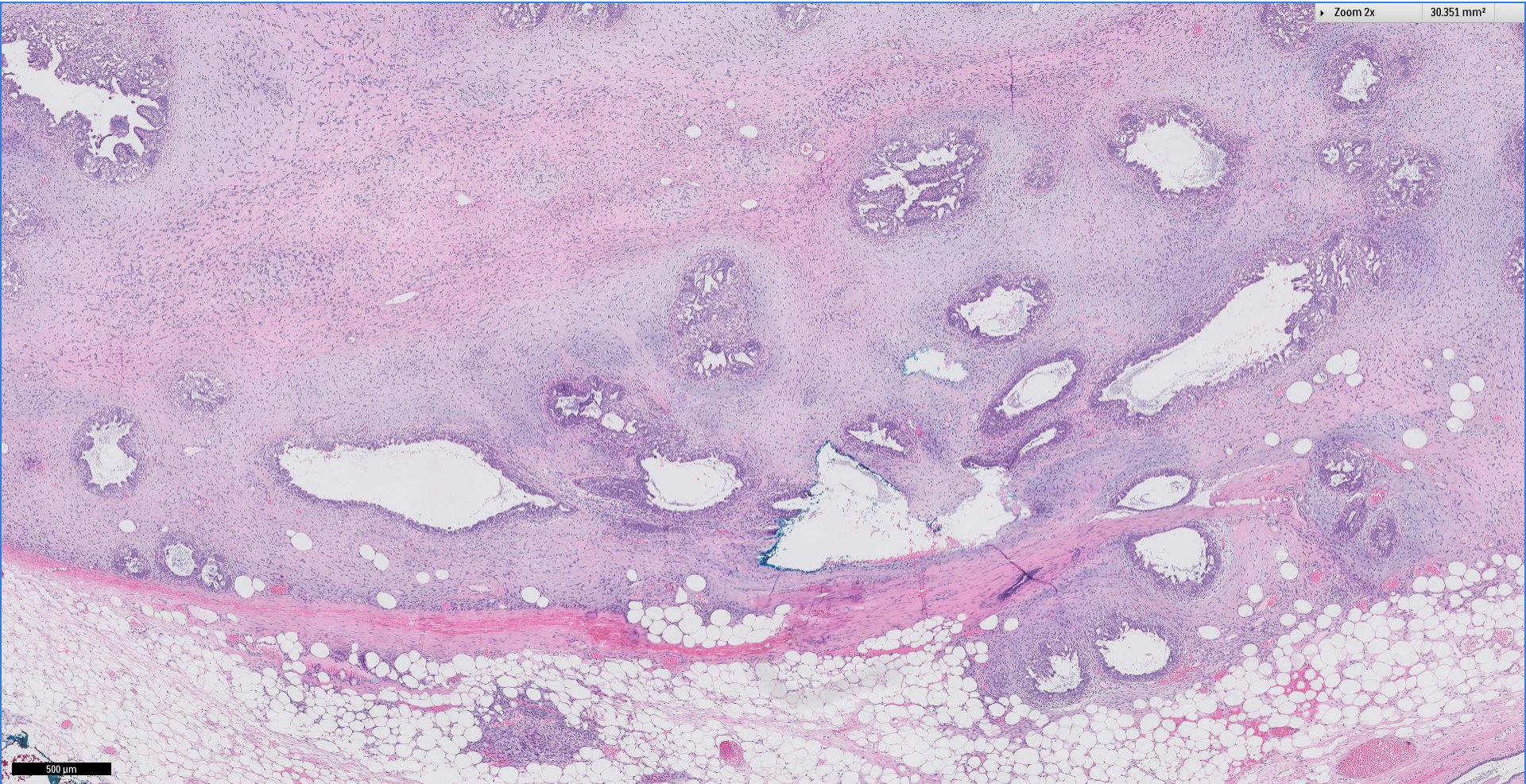
30.351 mm²

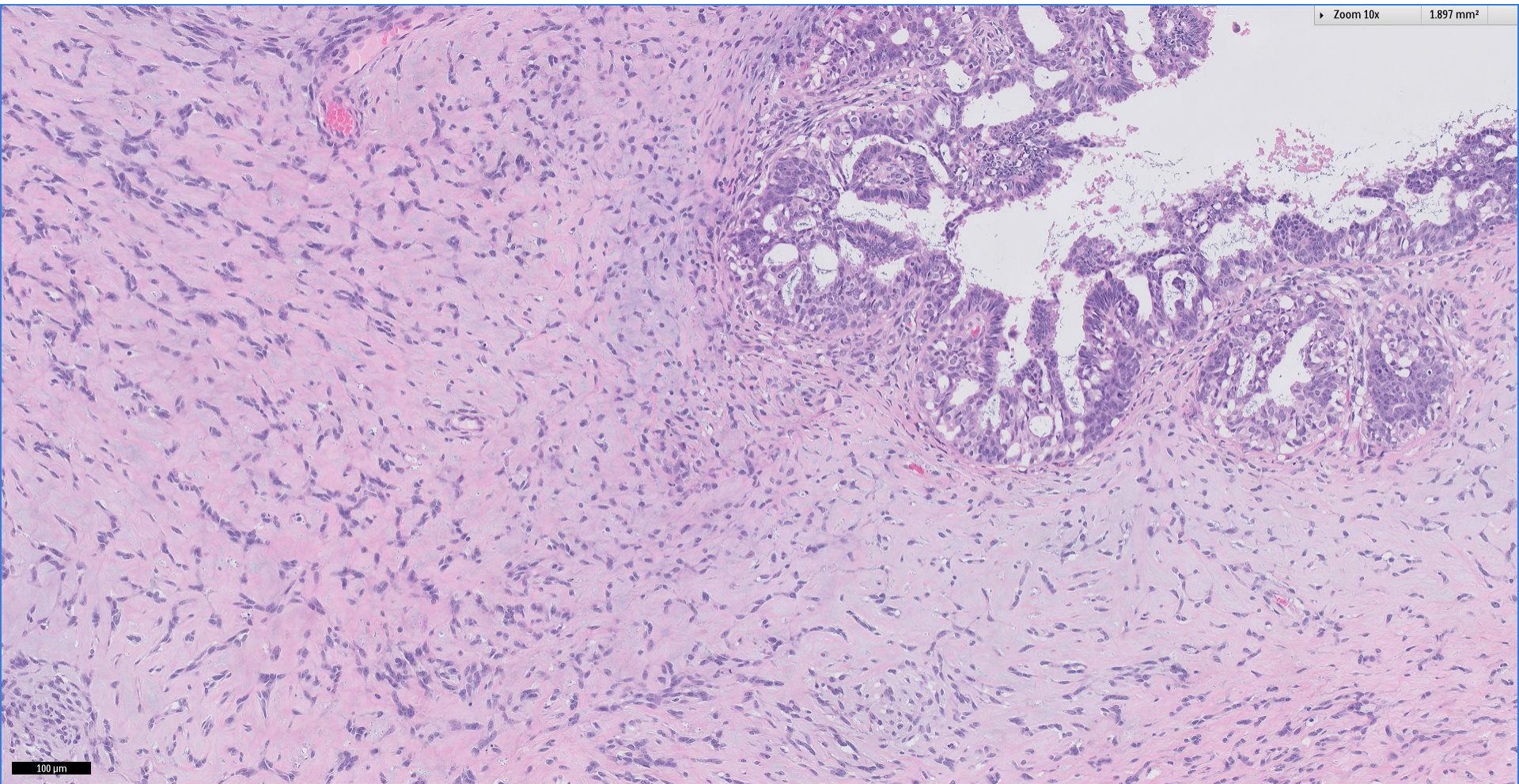


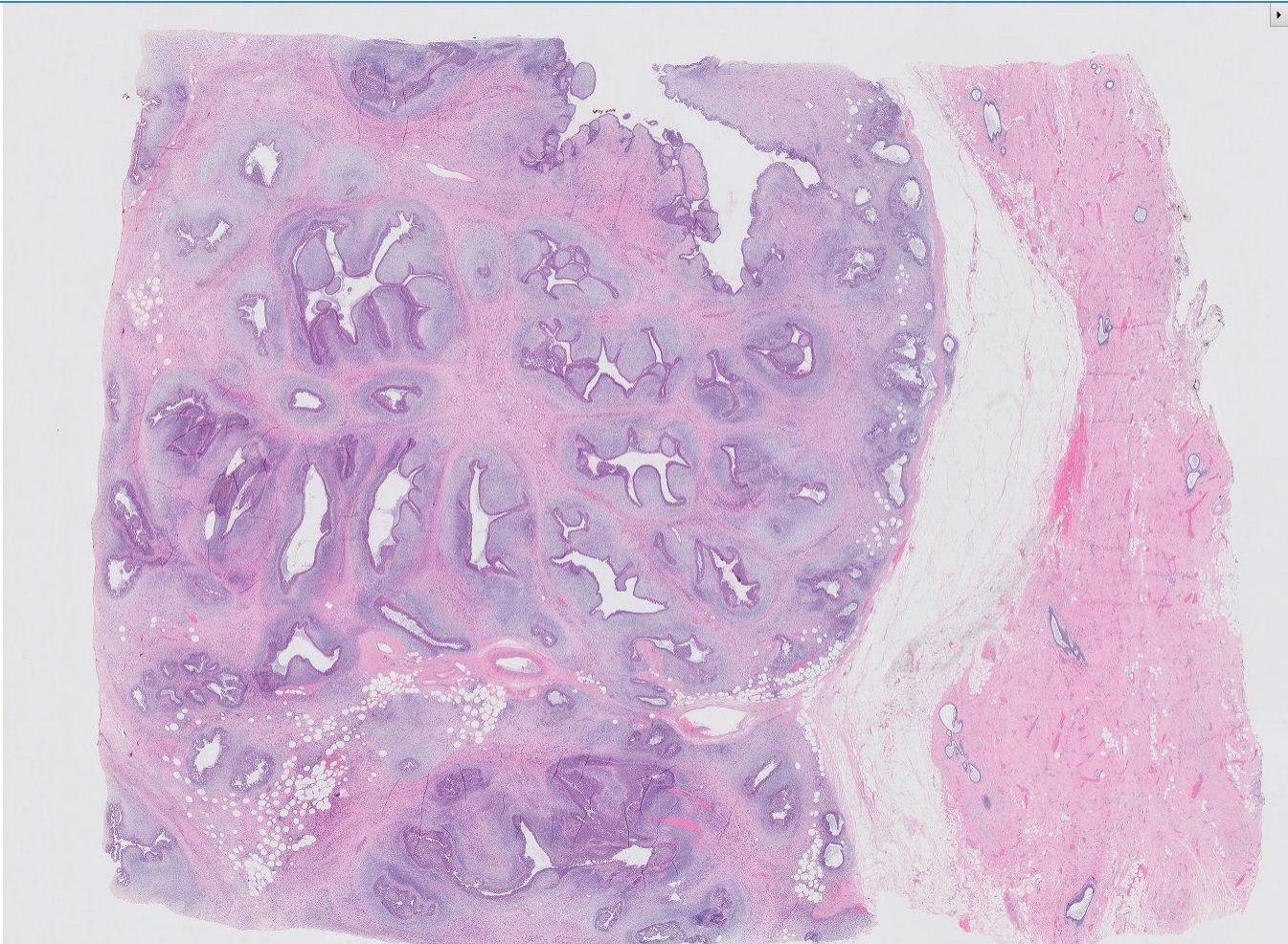
Division of Pathology
Singapore General Hospital

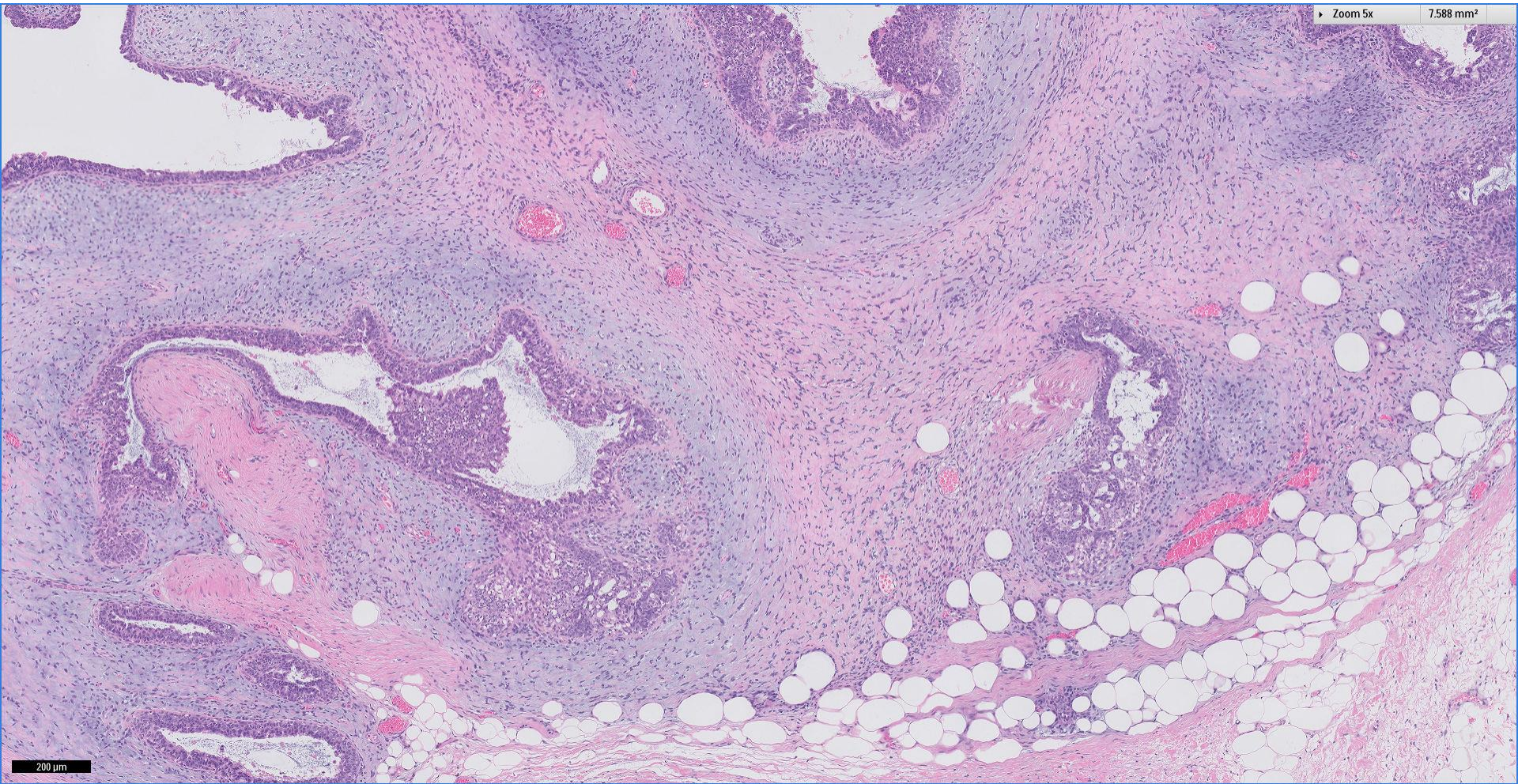










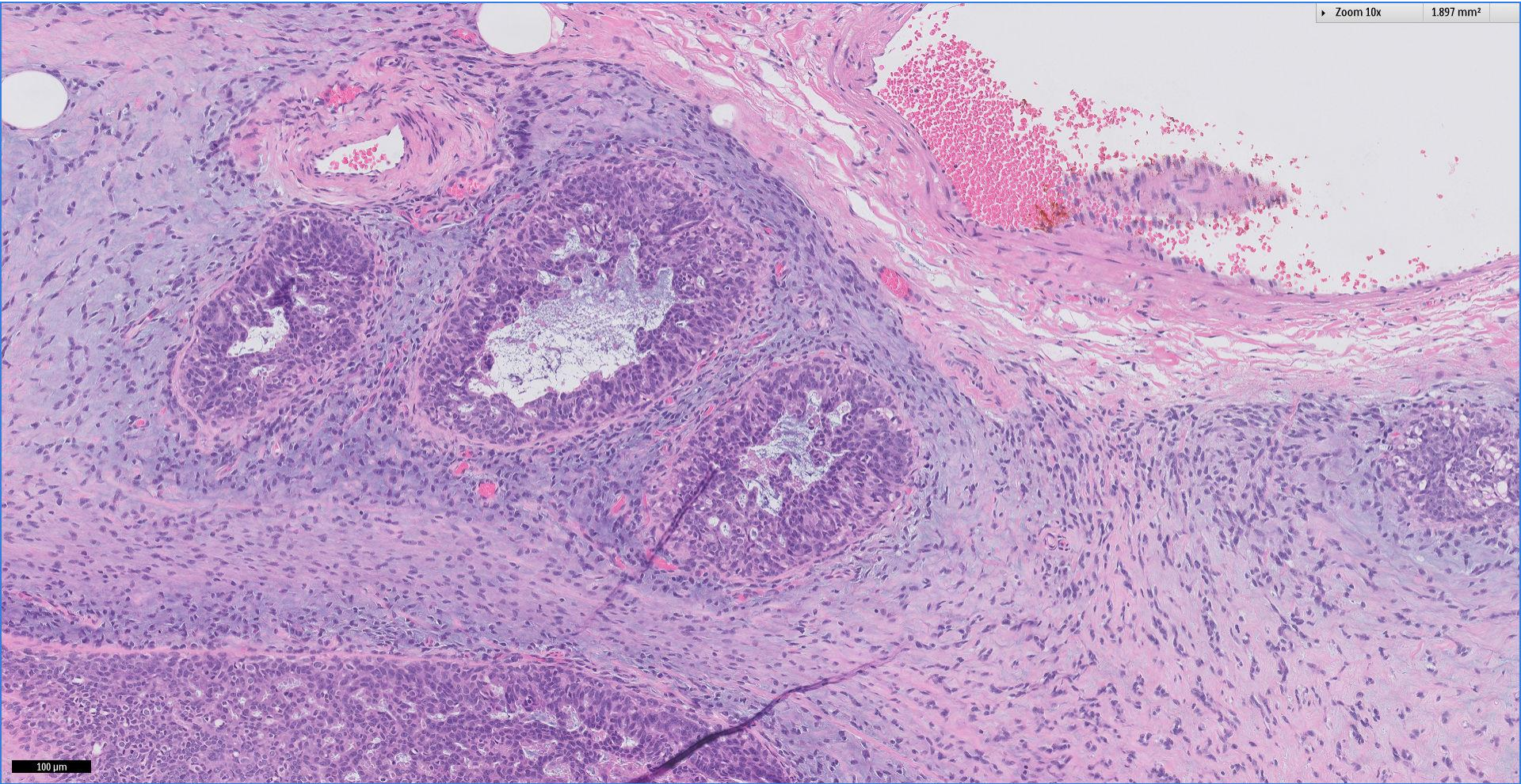


200 μ m



Division of Pathology
Singapore General Hospital





Thank You