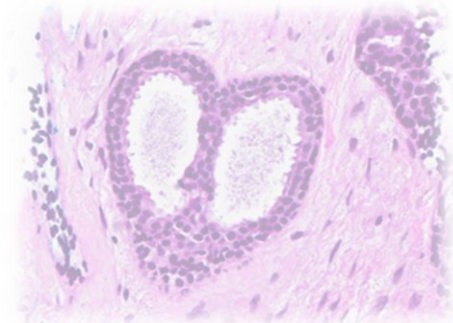
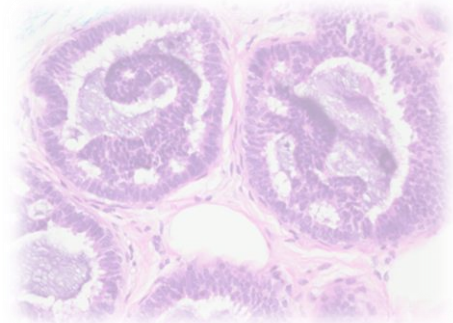
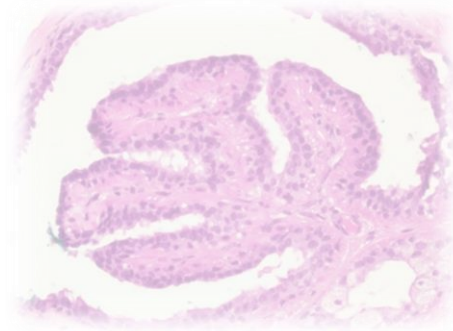


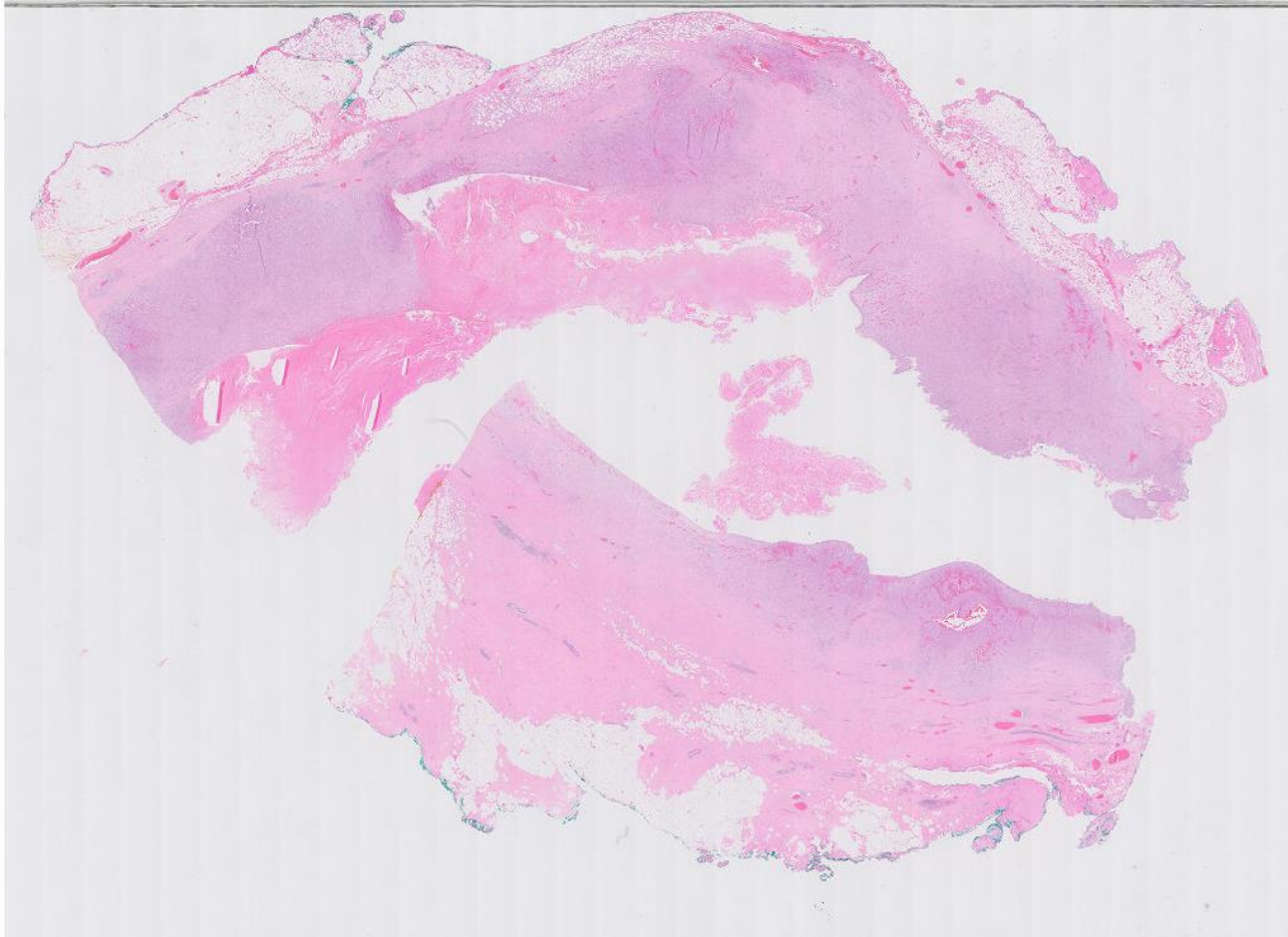
Case 23

Adult female.

Left breast 2 o'clock 4cm solid-cystic mass;
ultrasound guided core biopsy was reported
as 'florid foreign body type multinucleated
giant cell reaction with haemorrhage and
necrosis'.

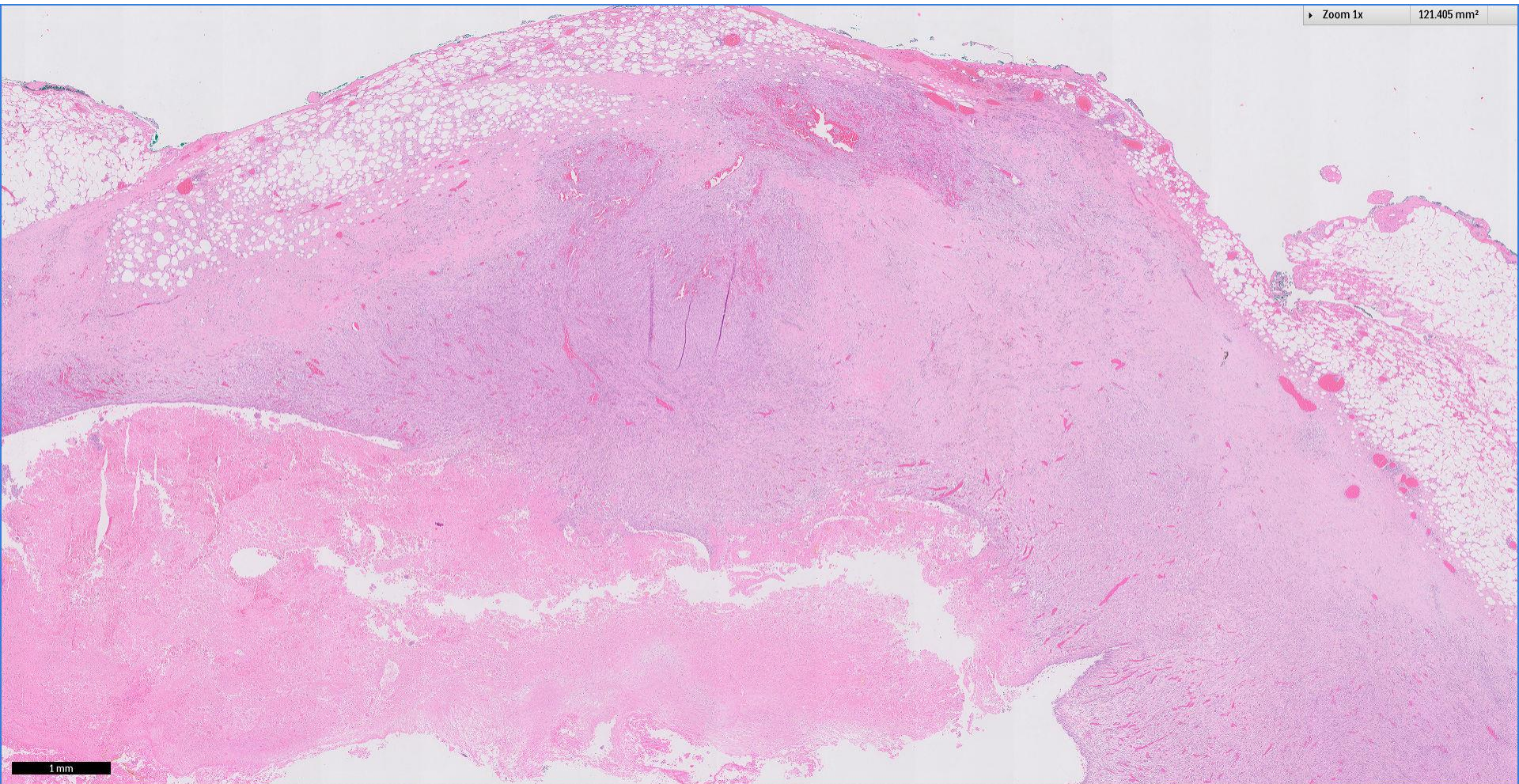
Subsequent excision biopsy done, section
provided.

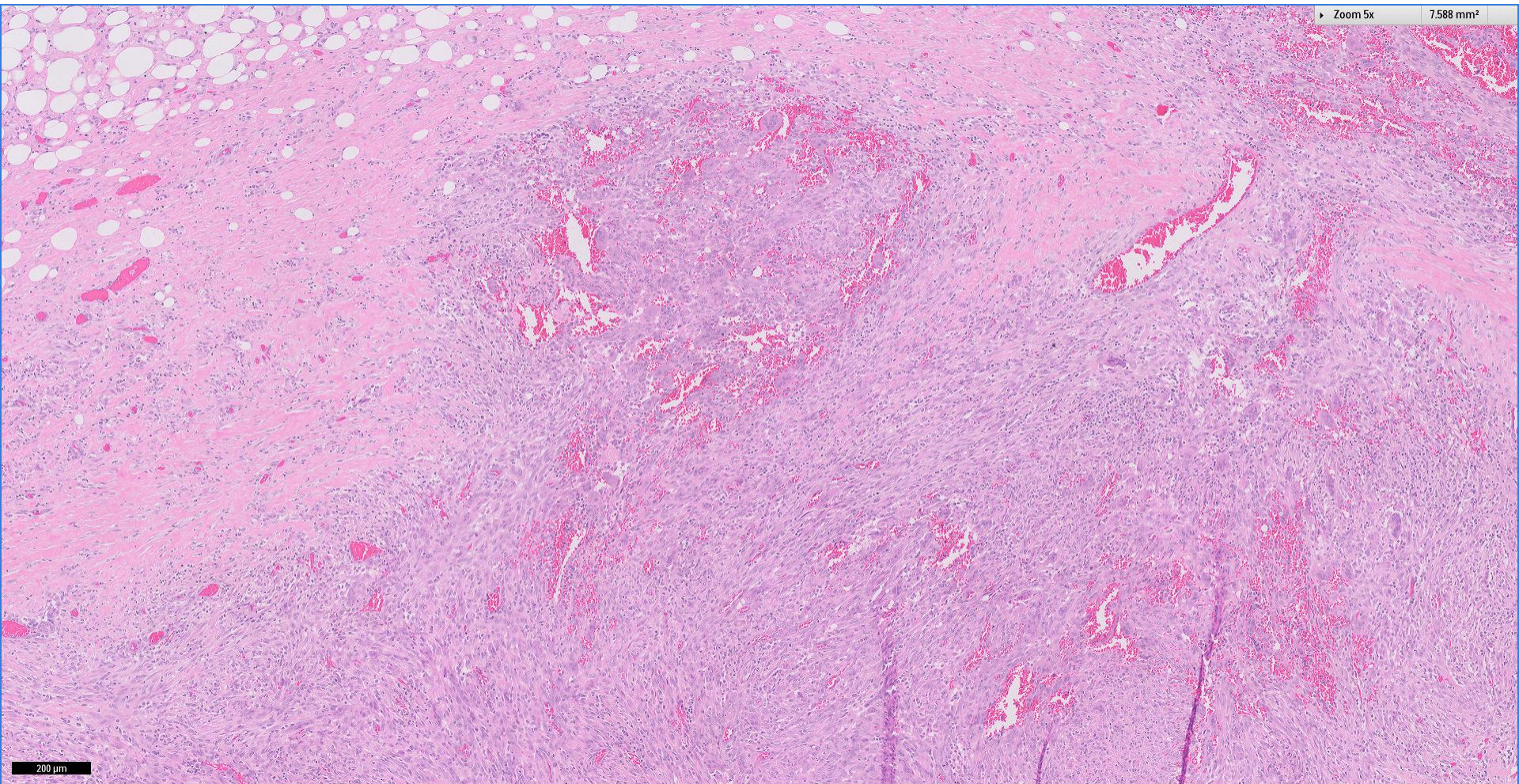


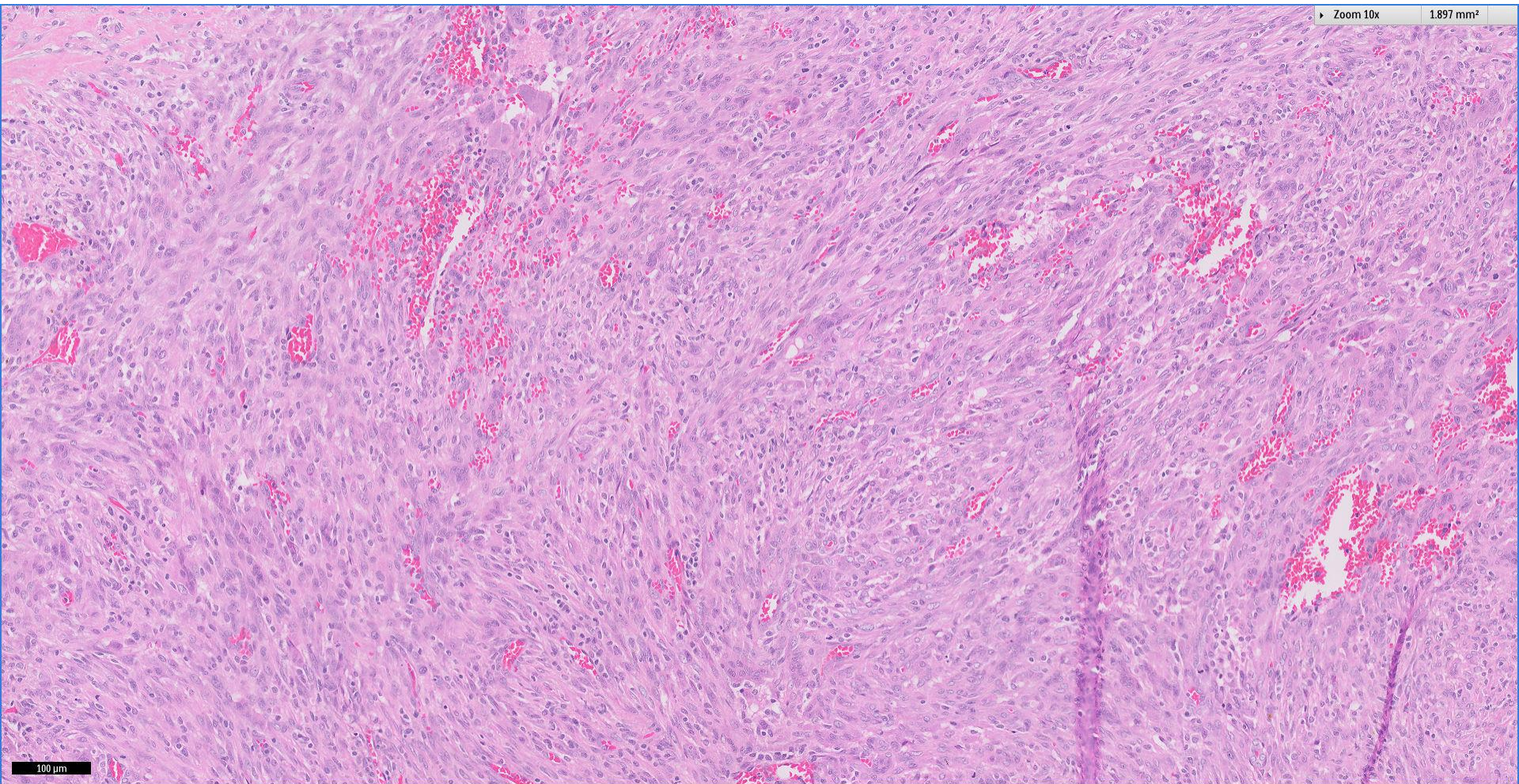


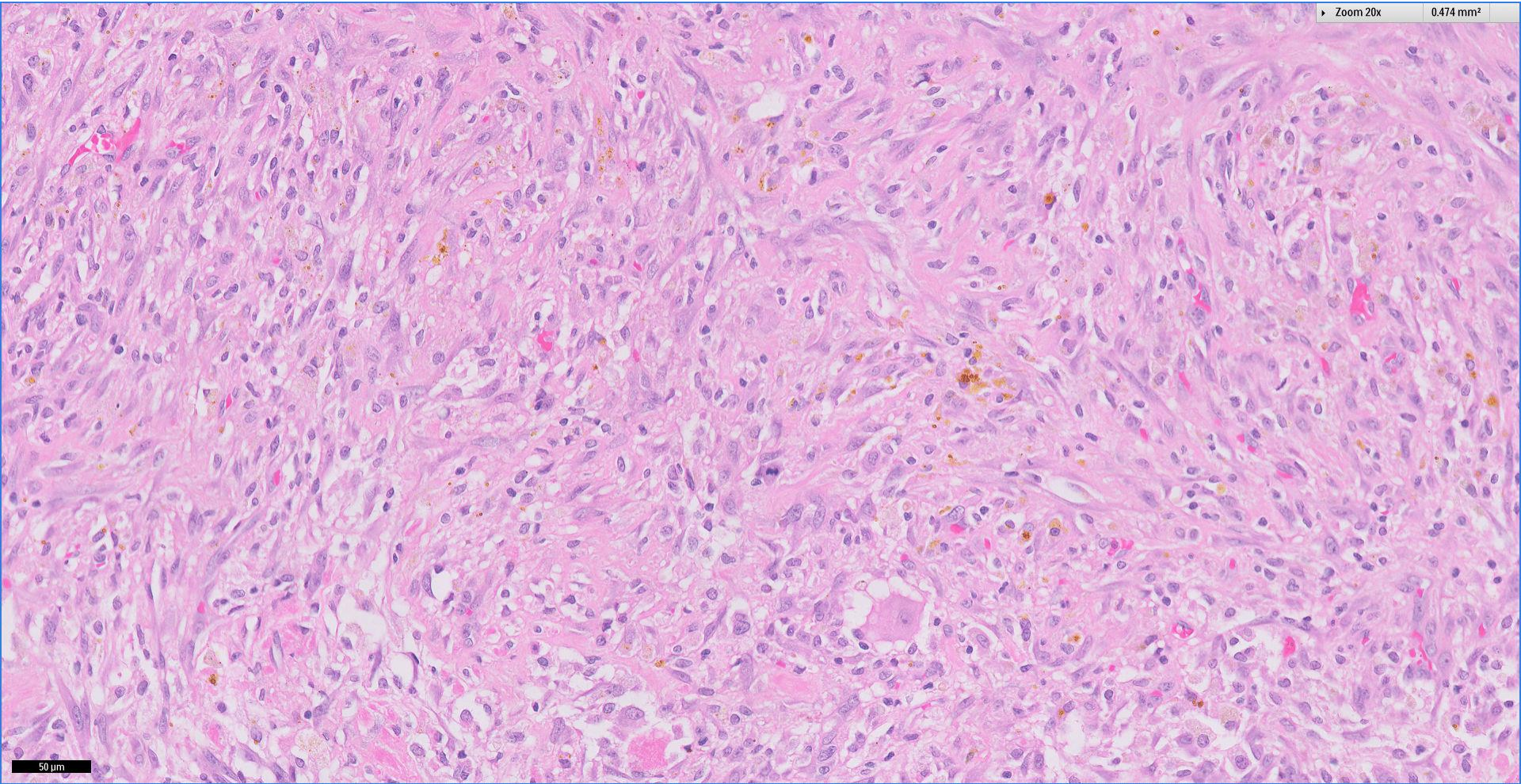
Division of Pathology
Singapore General Hospital











Thank You