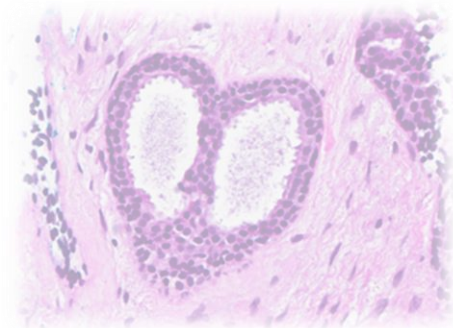
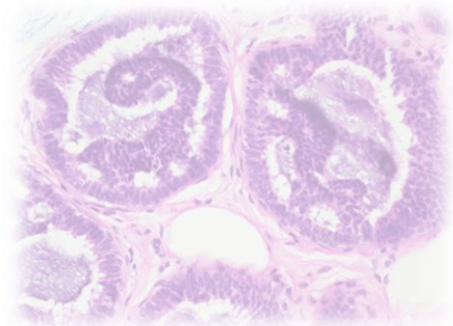
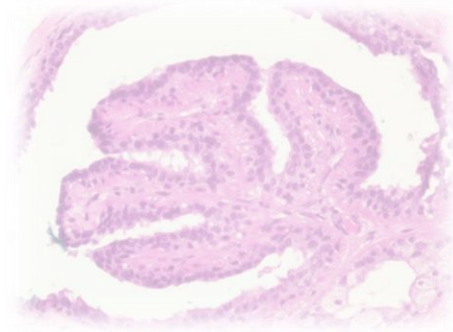
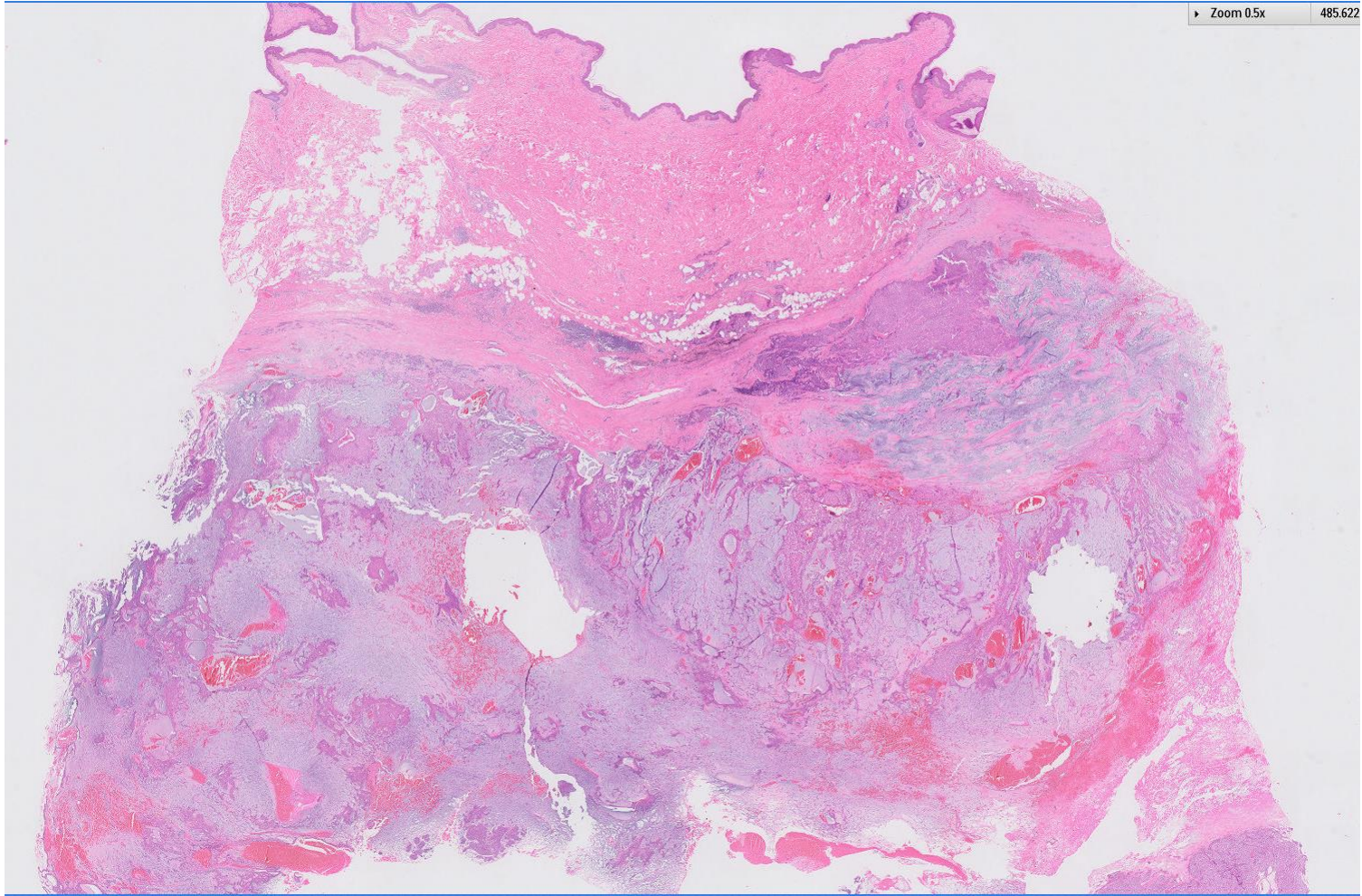


Case 18

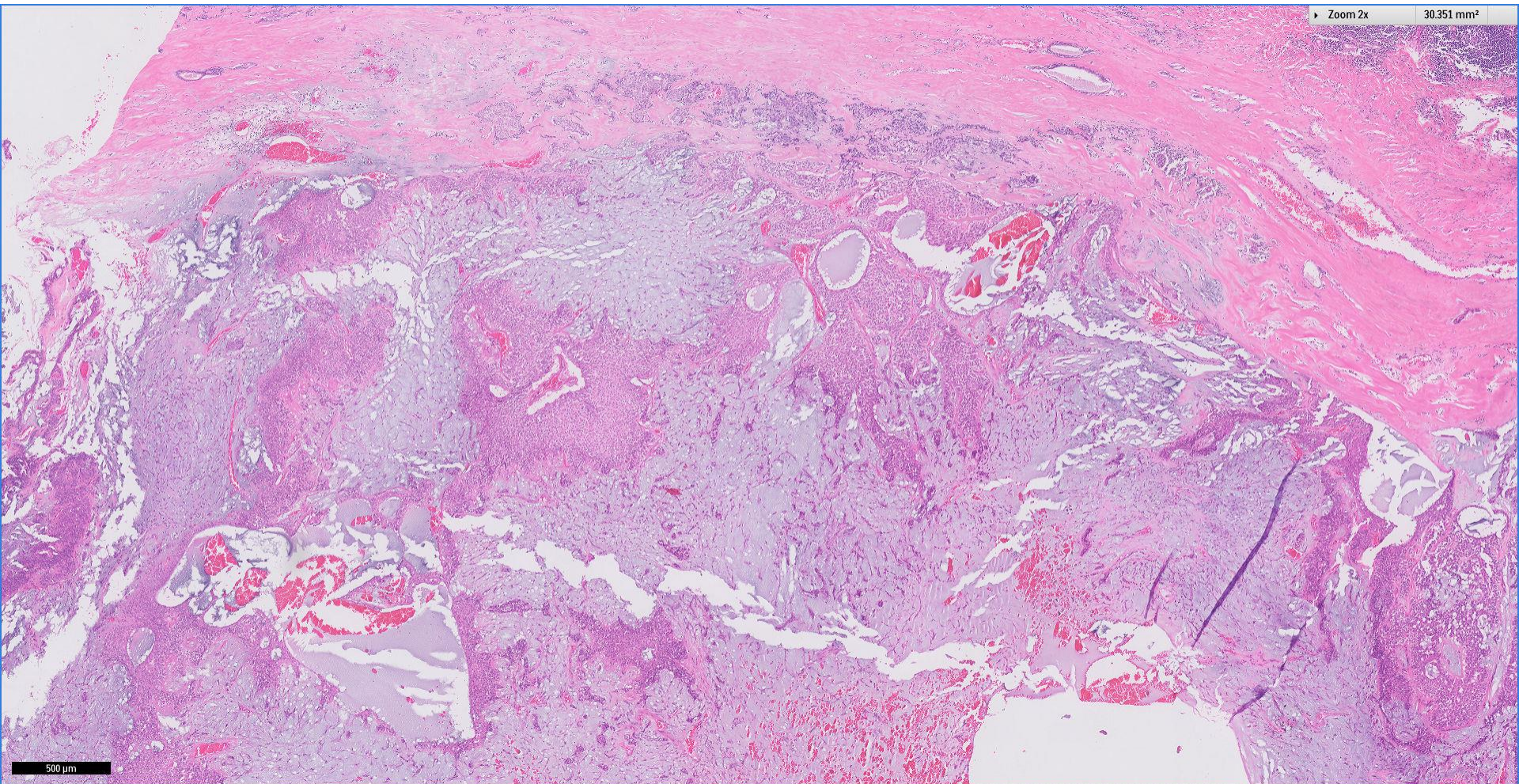
66 year old Chinese female.
Left breast lump, excision biopsy.
Core biopsy diagnosis was
indeterminate.





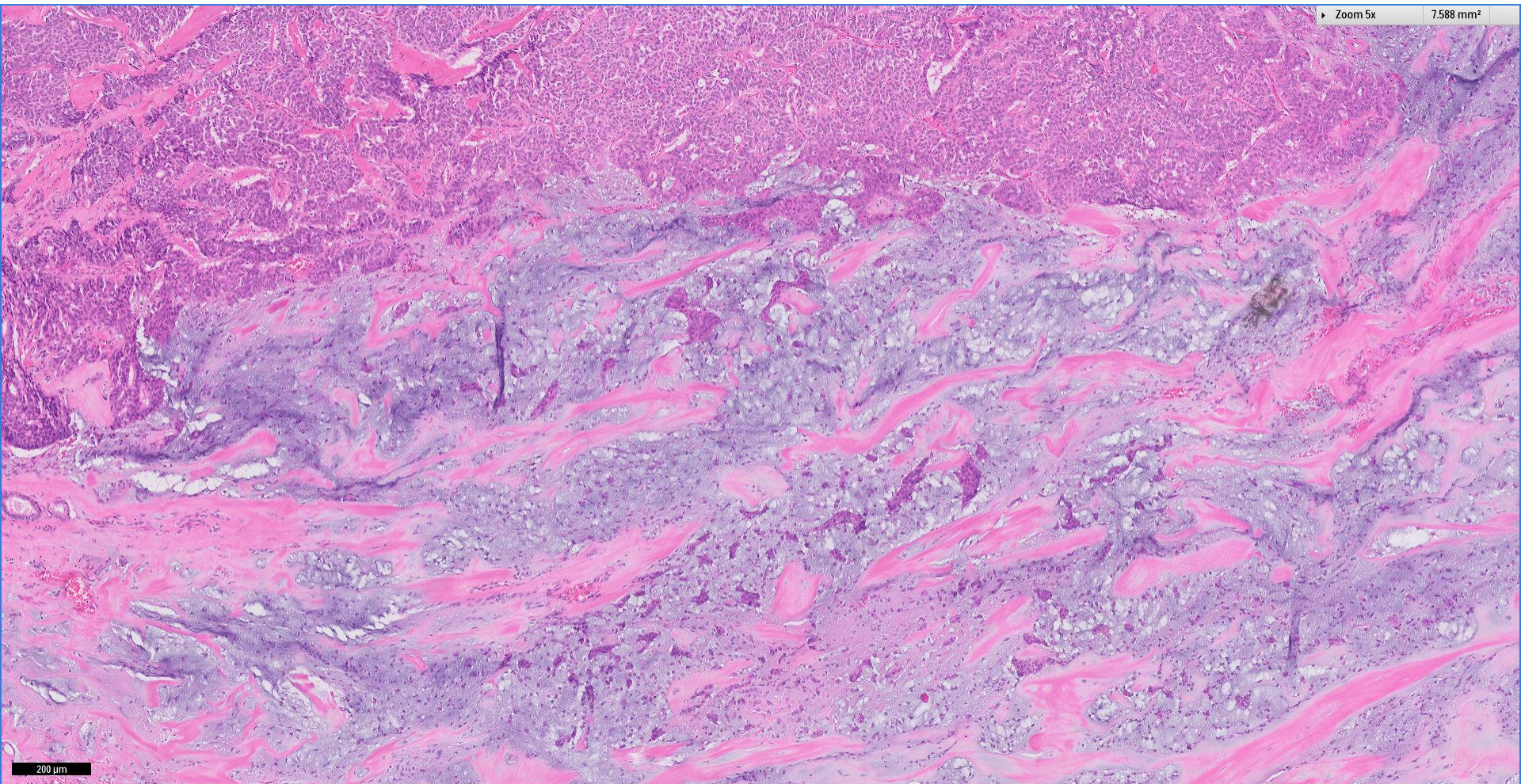
Division of Pathology
Singapore General Hospital



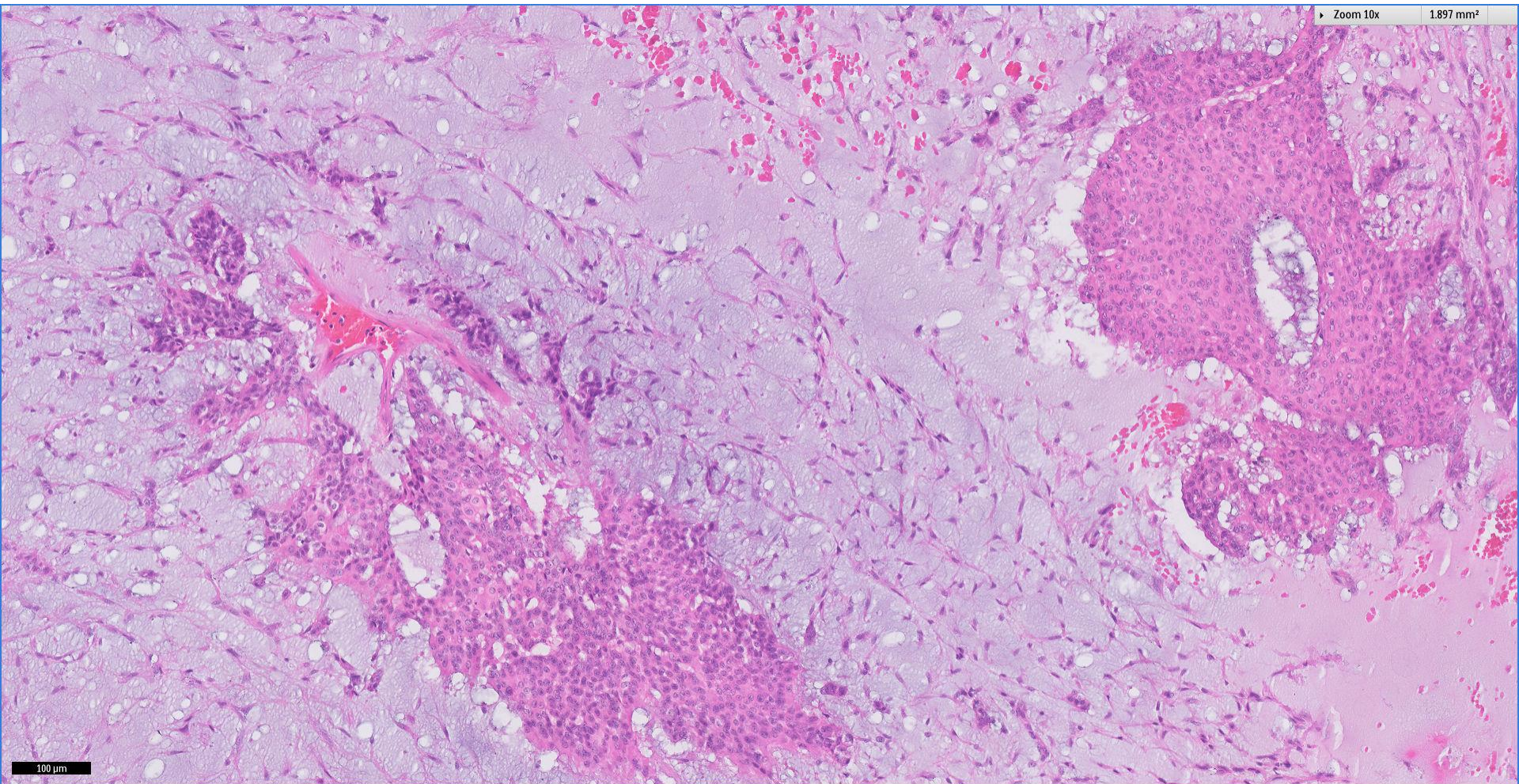


Division of Pathology
Singapore General Hospital



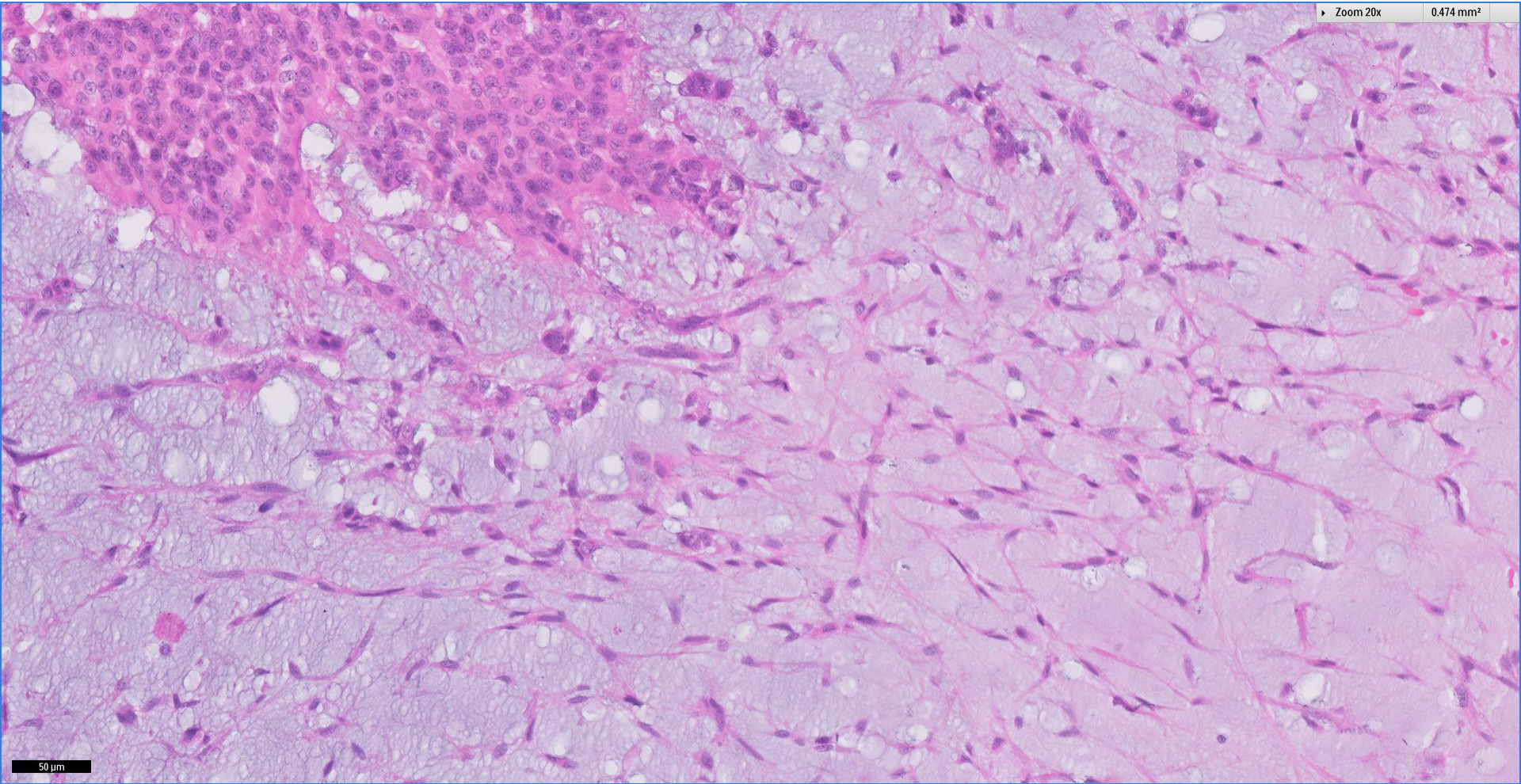


200 μm



Division of Pathology
Singapore General Hospital





Division of Pathology
Singapore General Hospital



Thank You