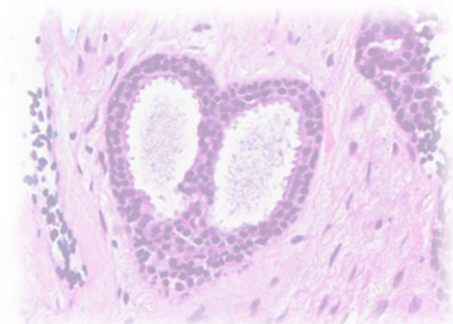
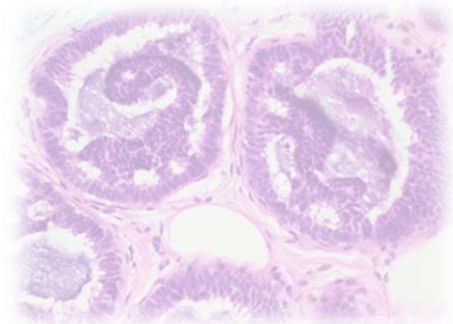
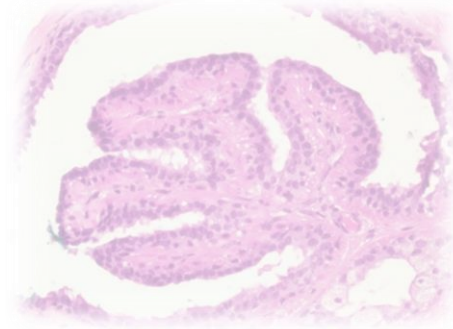
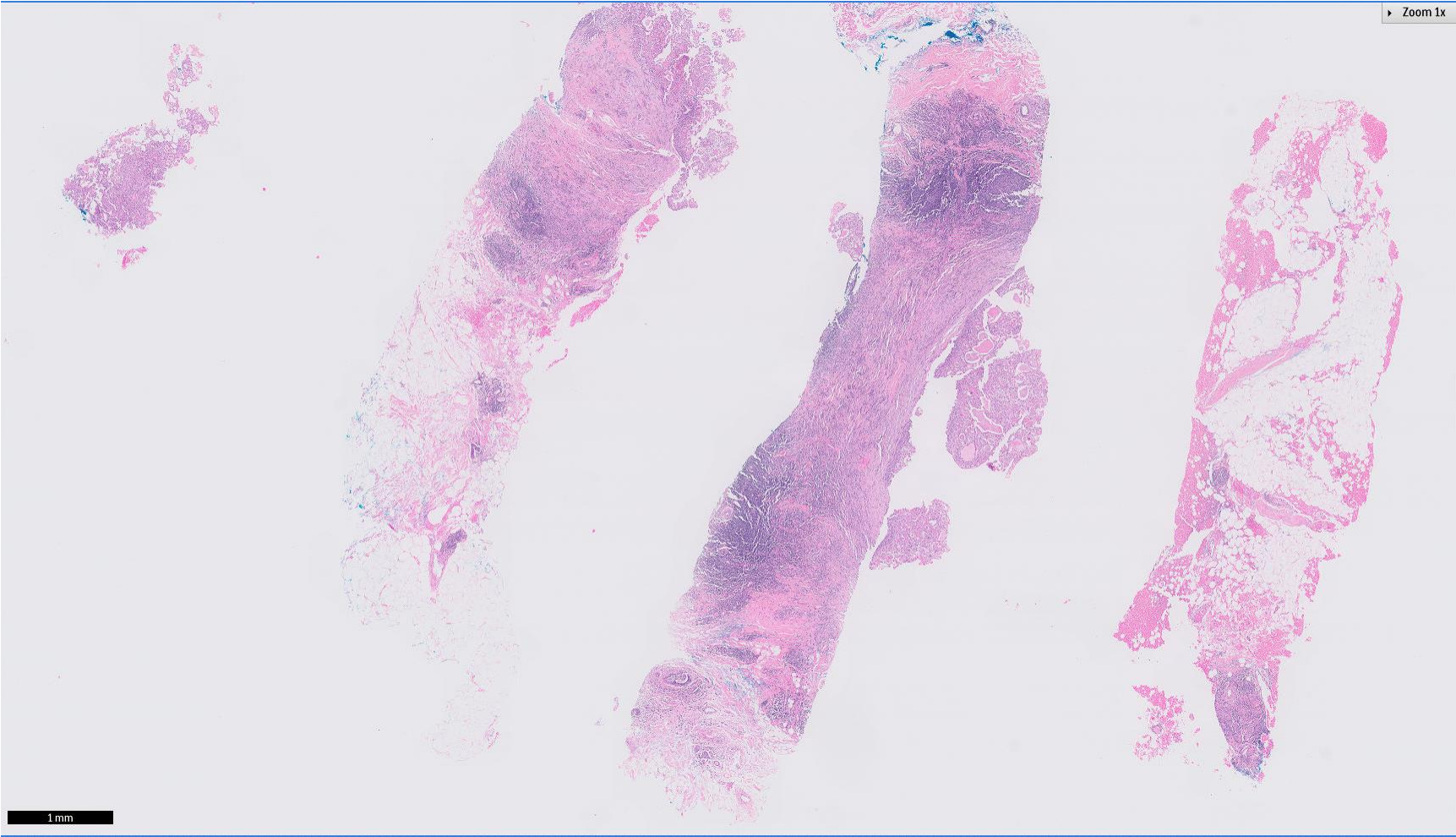


Case 17

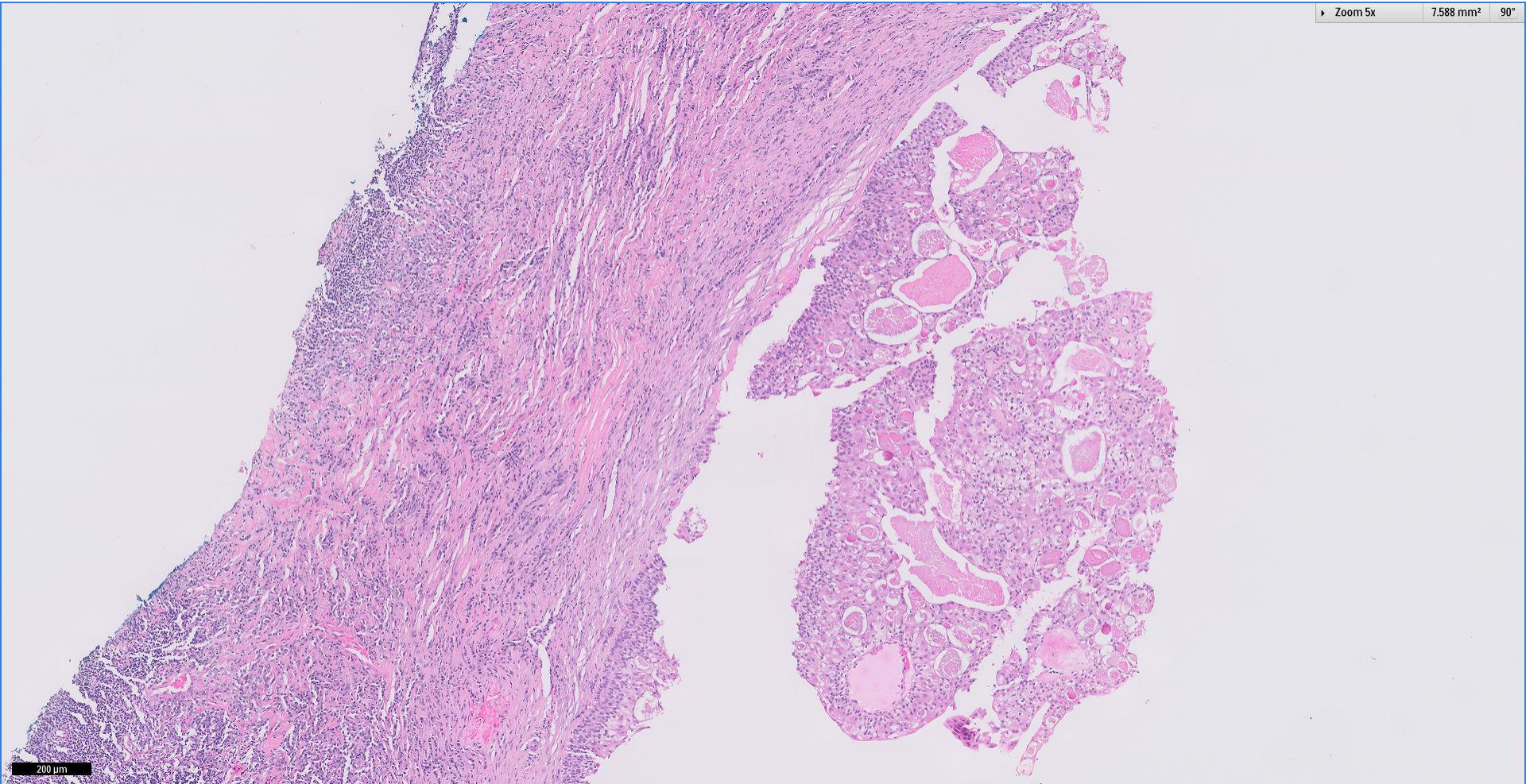
44 year old Chinese female.
Left breast 10 o'clock nodule.
Core biopsy (A) and subsequent
excision (B).



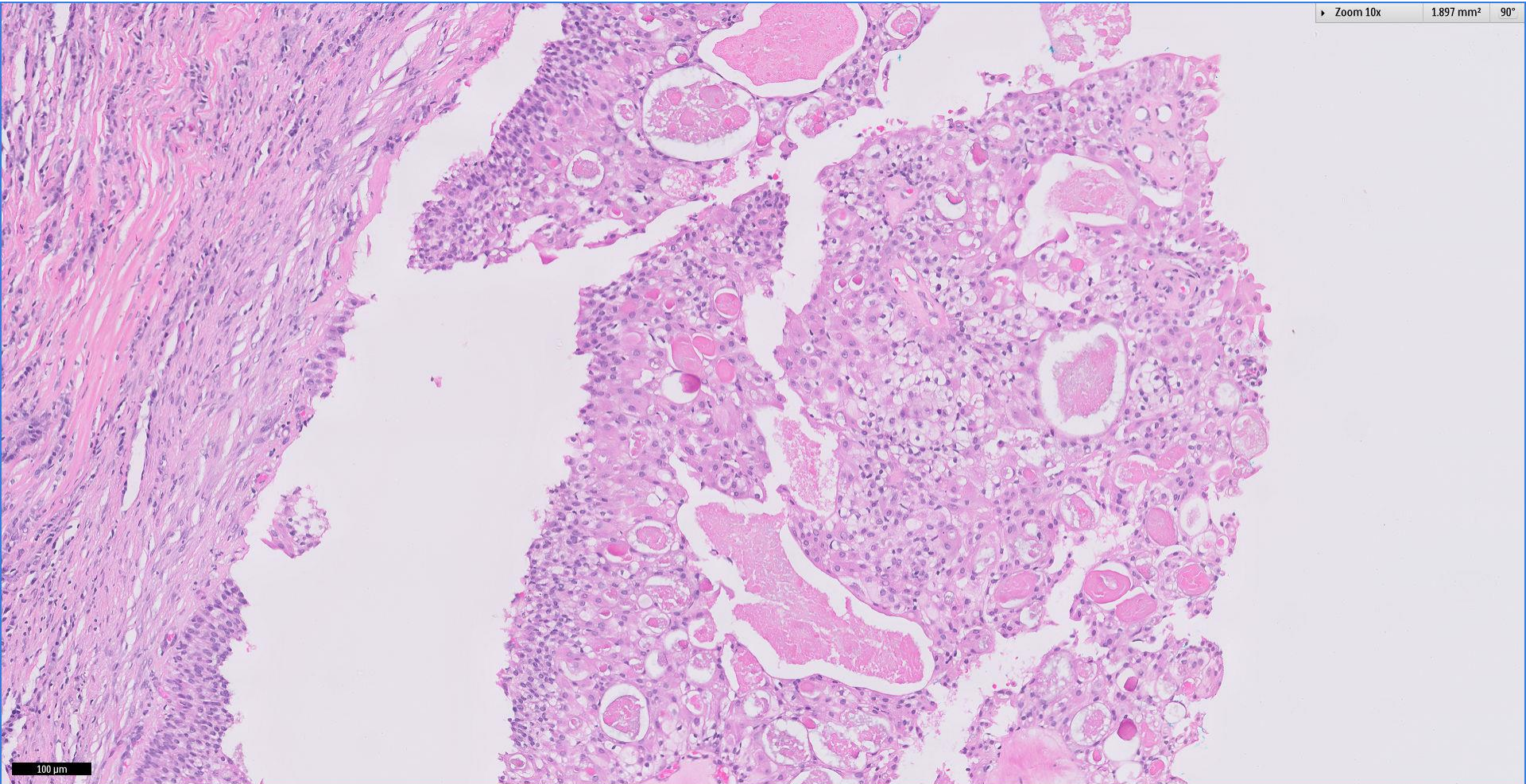
Core biopsy (A)



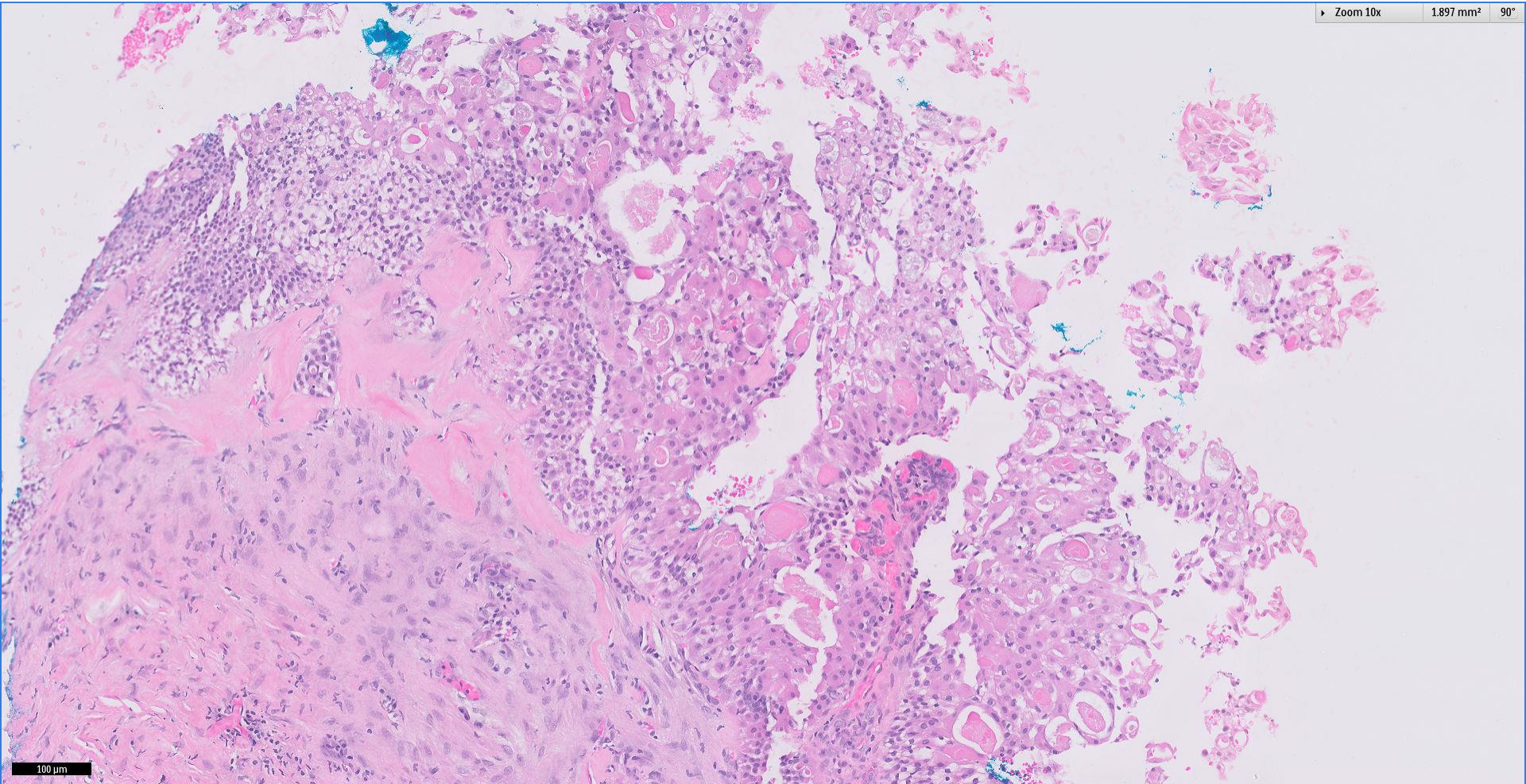
Core biopsy (A)



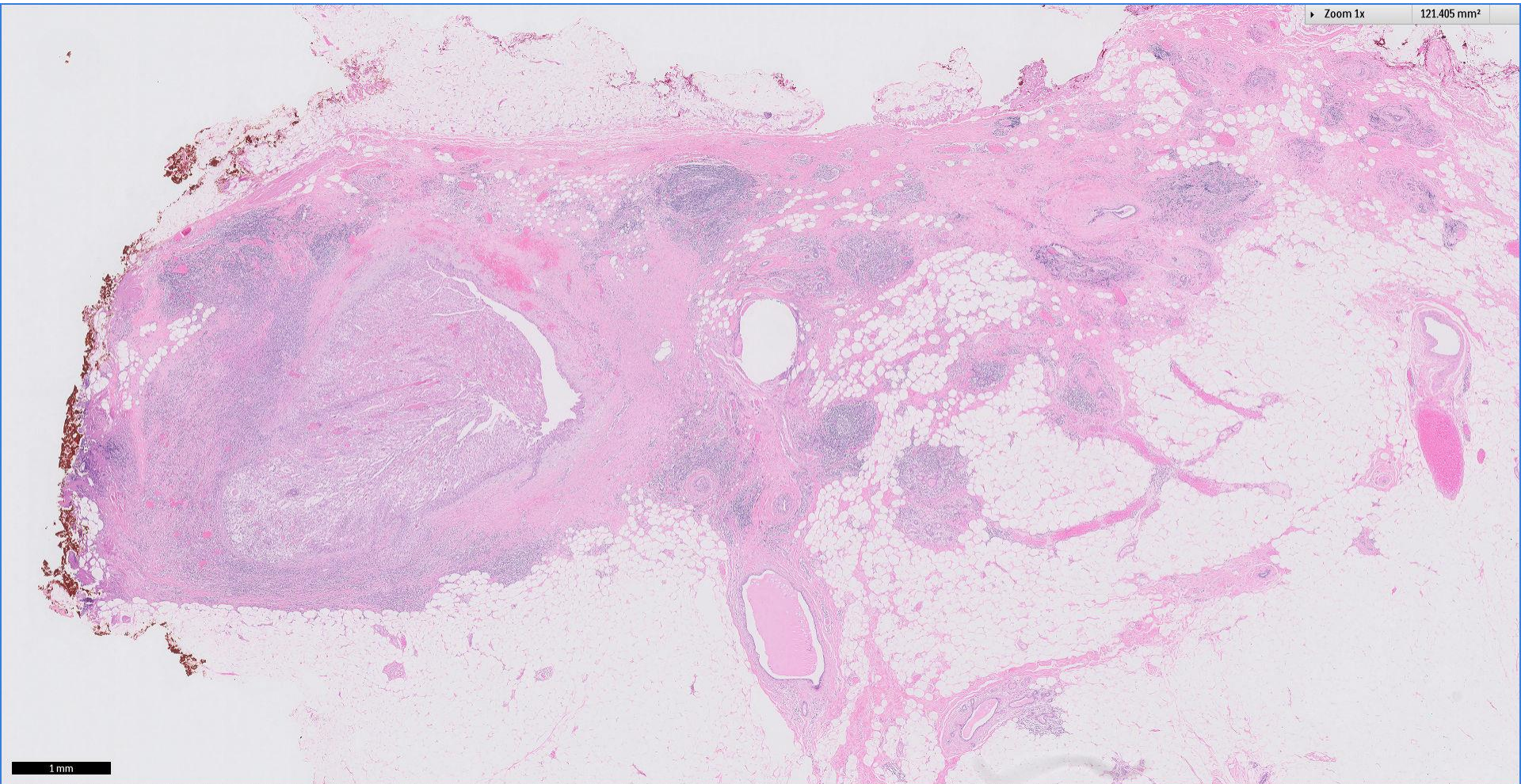
Core biopsy (A)



Core biopsy (A)



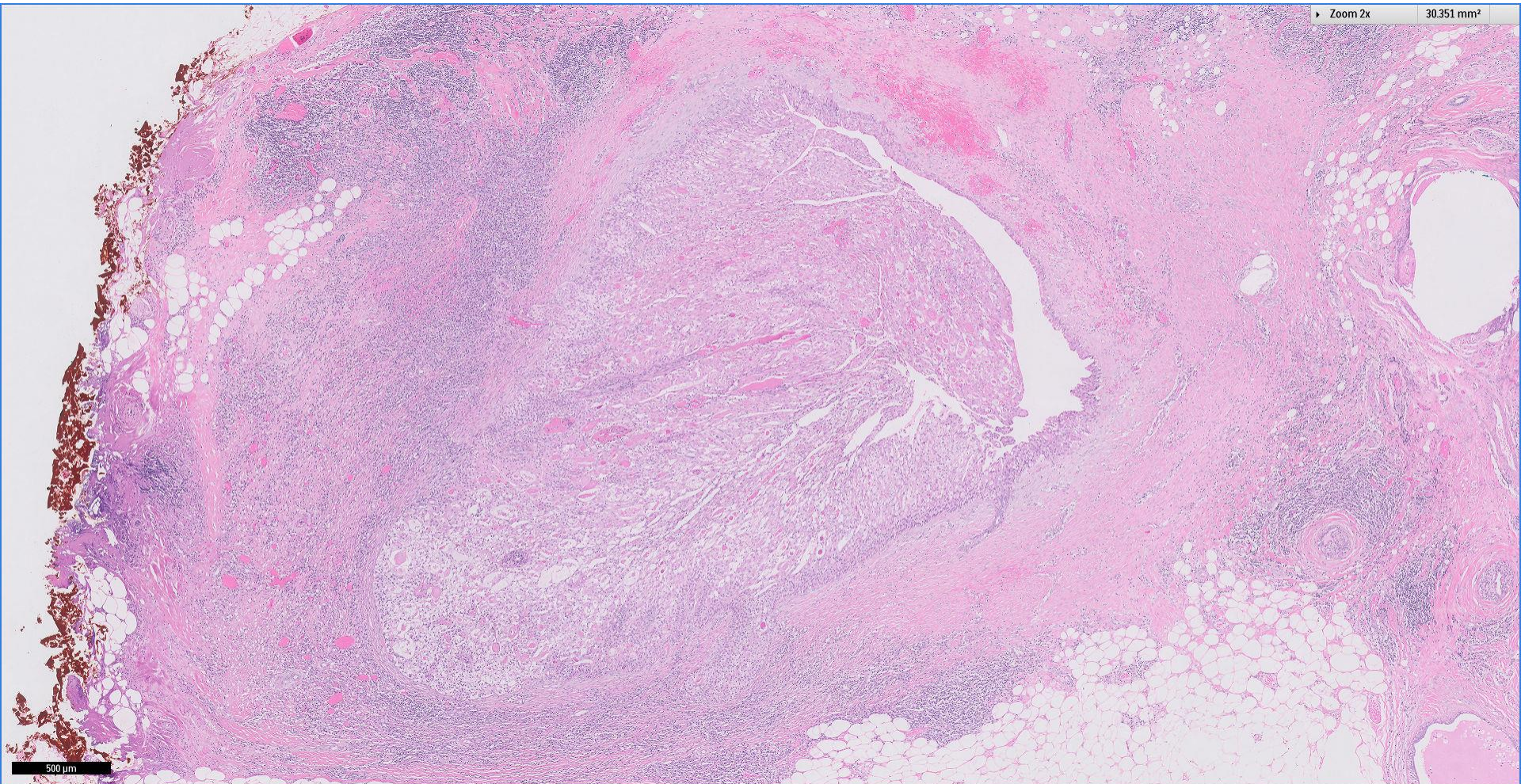
Excision biopsy (B)



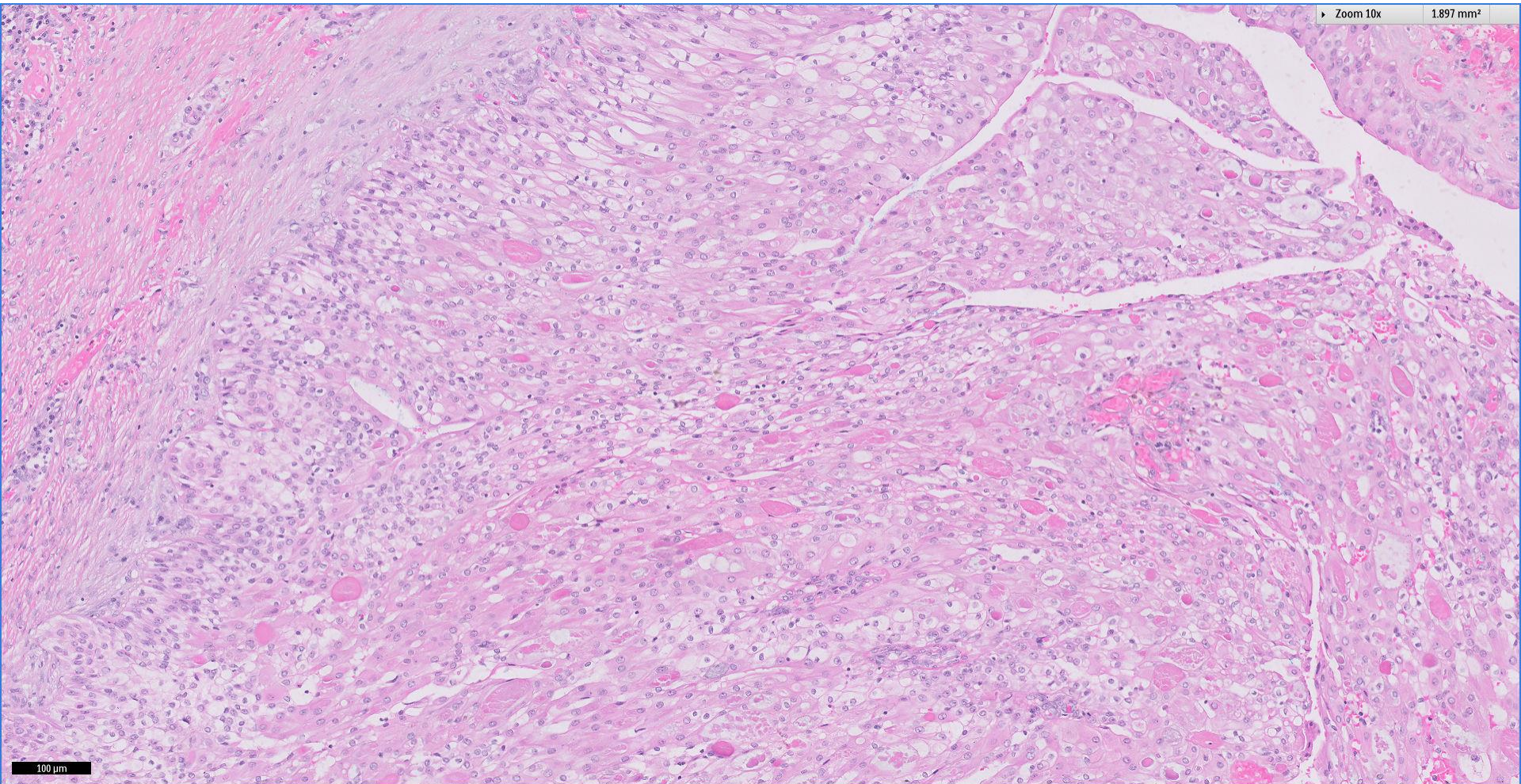
Division of Pathology
Singapore General Hospital



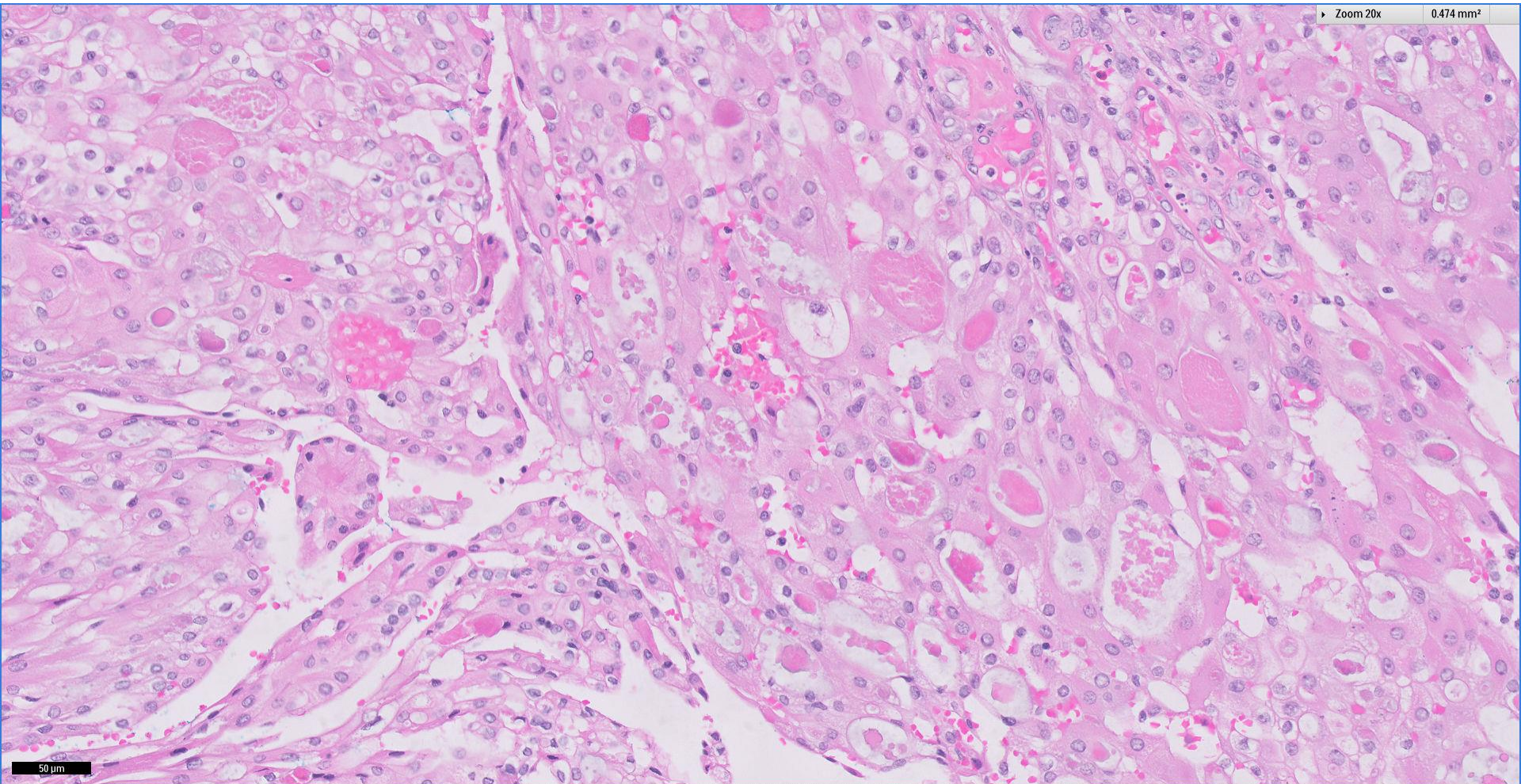
Excision biopsy (B)



Excision biopsy (B)



Excision biopsy (B)



Thank You