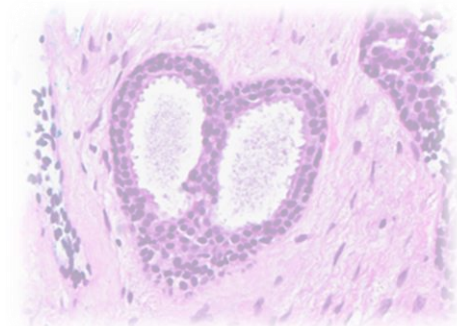
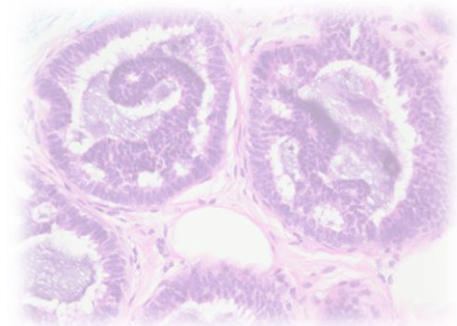
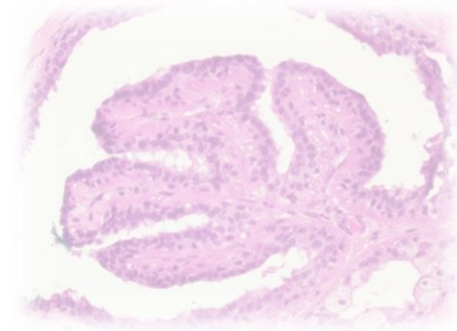
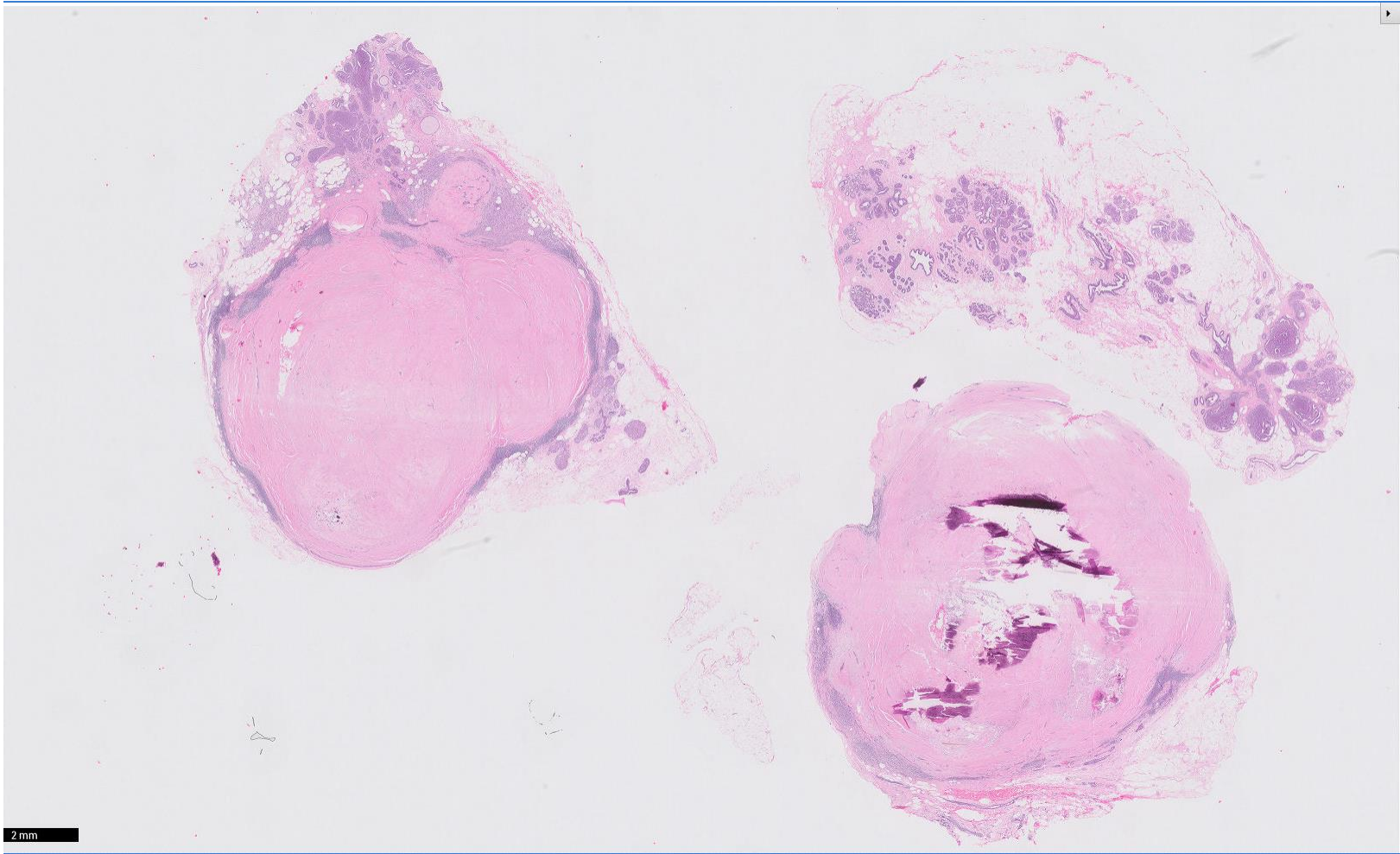


Case 7

59 year old Chinese female.
Right mastectomy and axillary clearance
showed an invasive ductal carcinoma
grade 3, 3.5cm, at 10-11 o'clock, with
nodal metastases.
Separate lesion at 9 o'clock, section
provided.



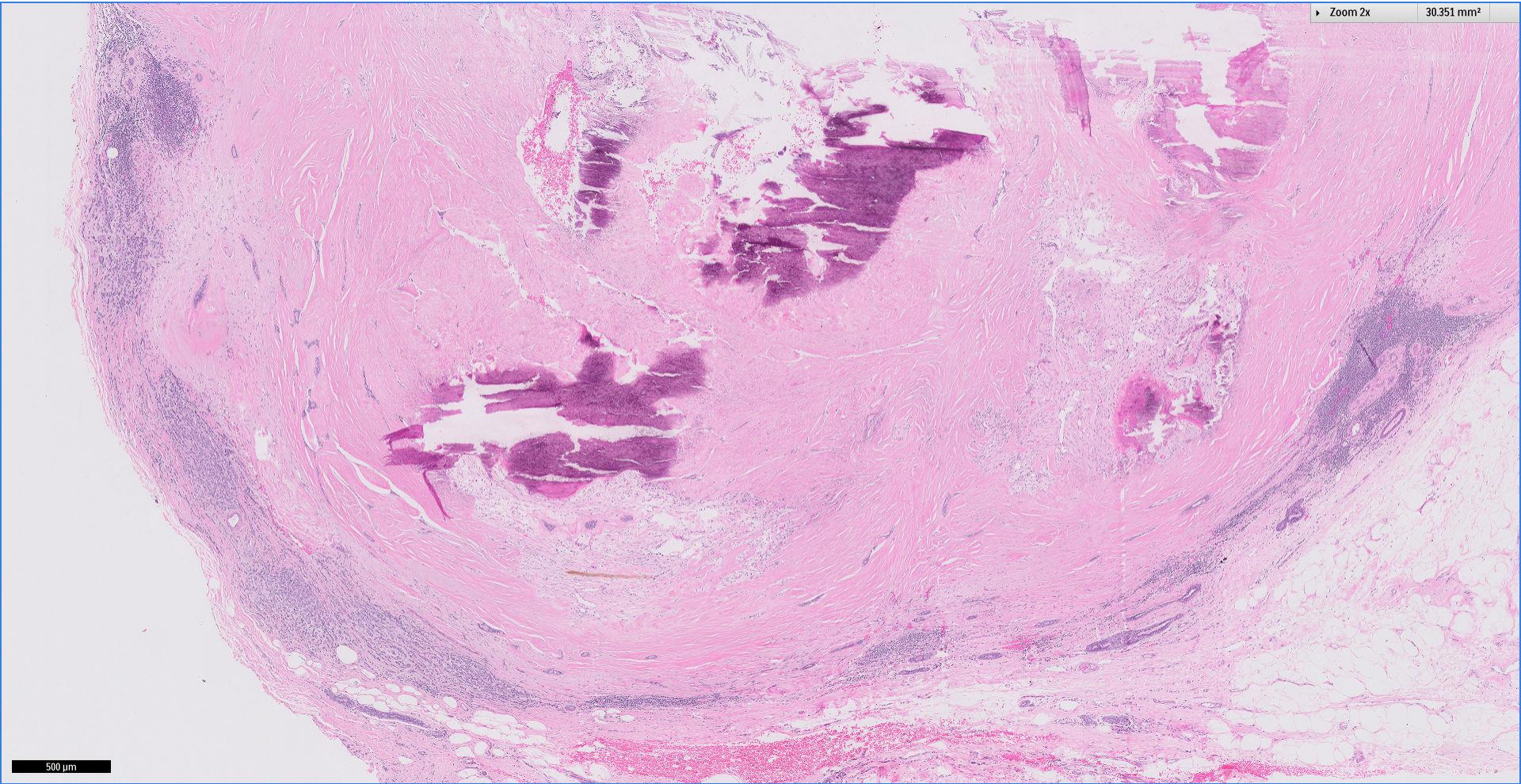


Division of Pathology
Singapore General Hospital



Zoom 2x

30.351 mm²

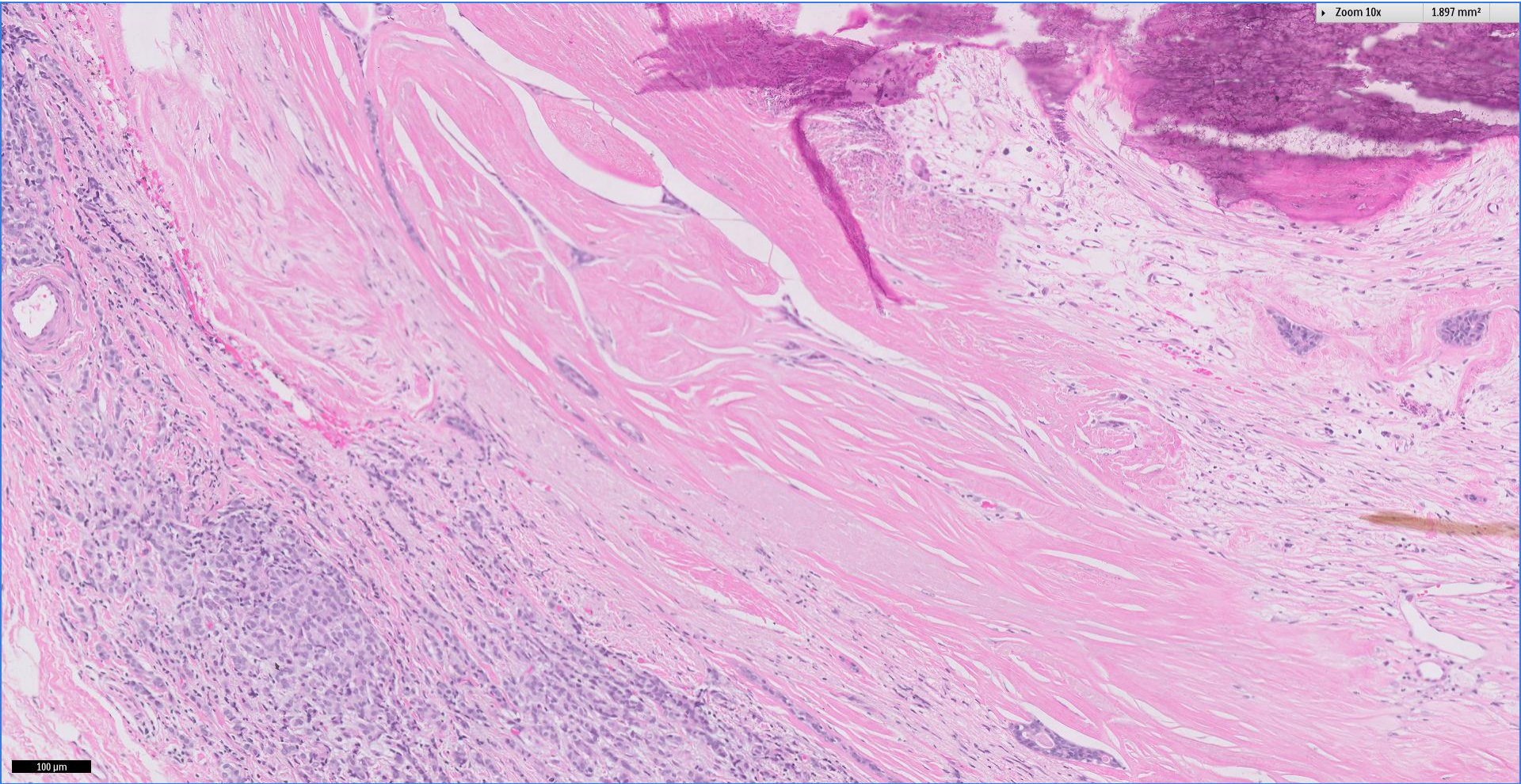


500 μ m



Division of Pathology
Singapore General Hospital



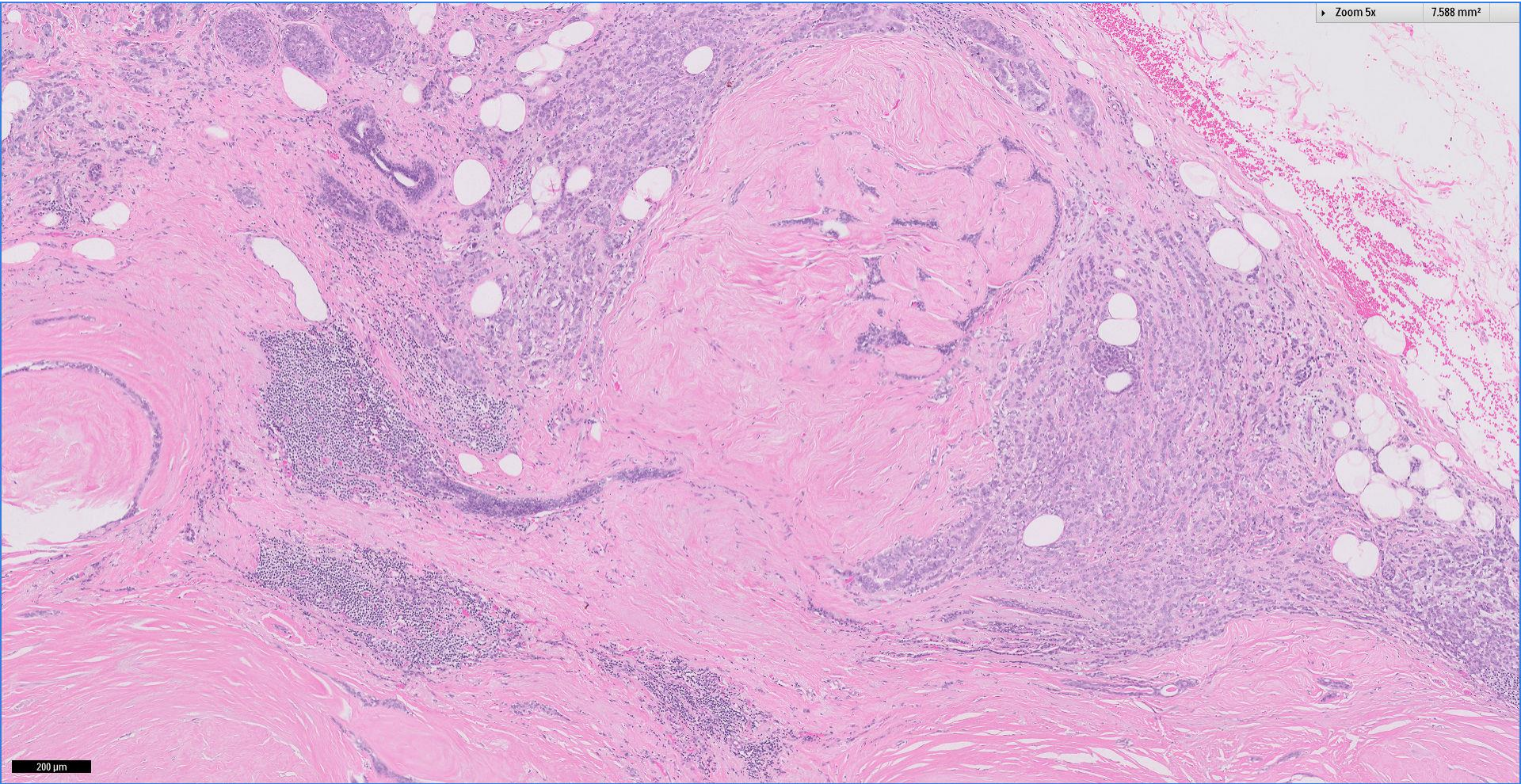


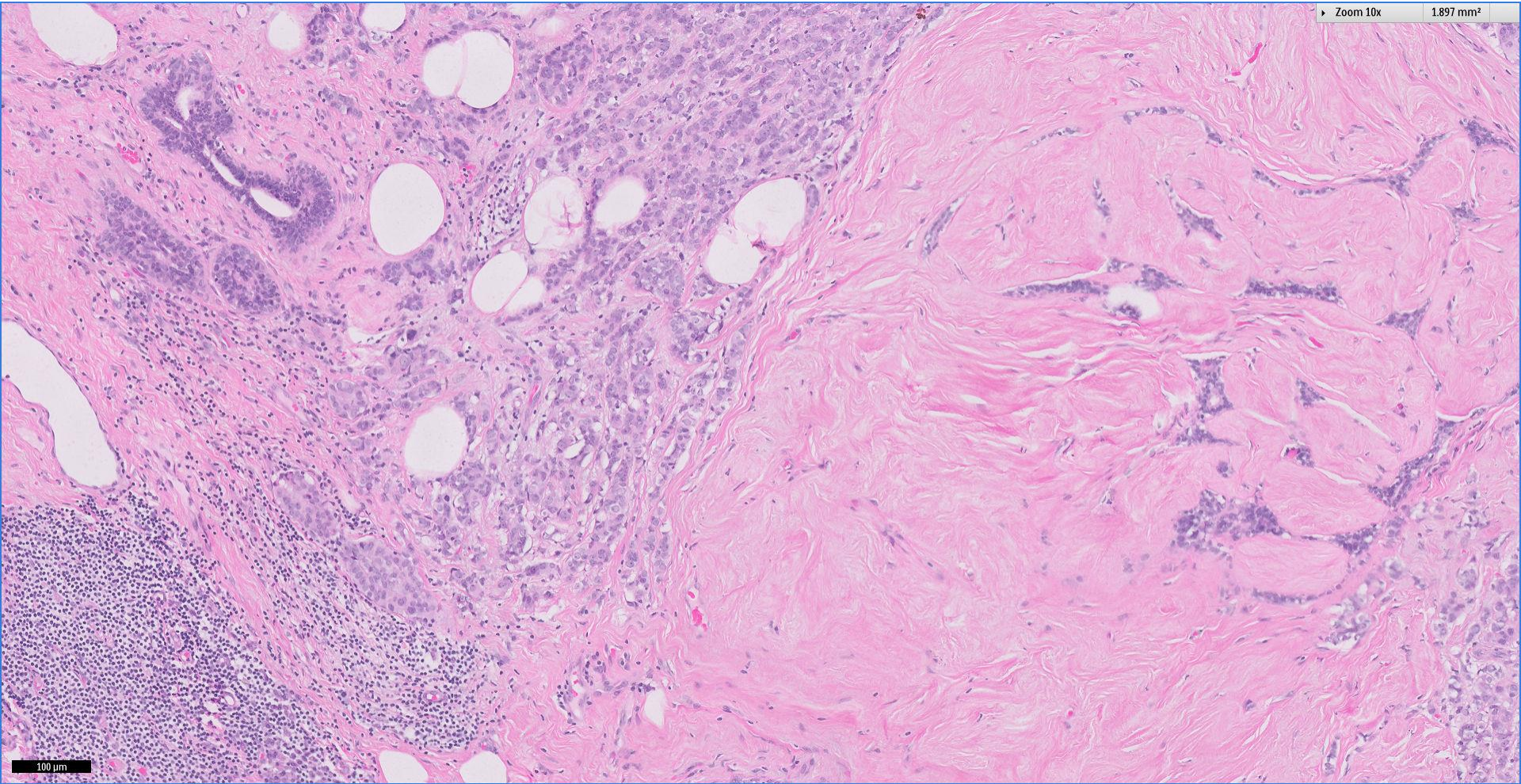
100 µm



Division of Pathology
Singapore General Hospital







Division of Pathology
Singapore General Hospital



Thank You