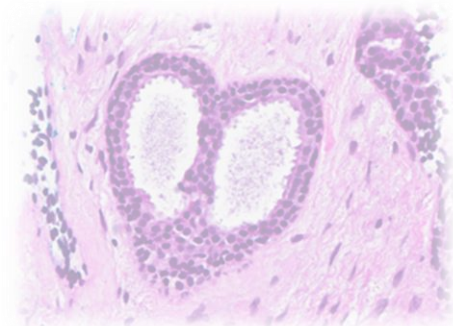
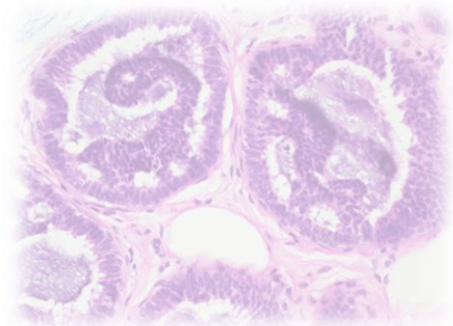
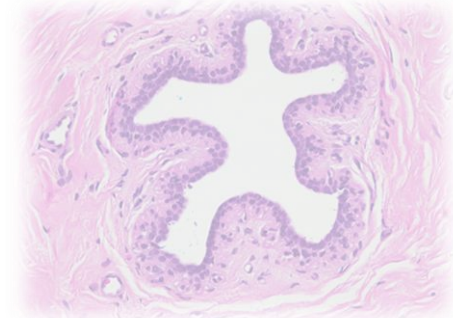
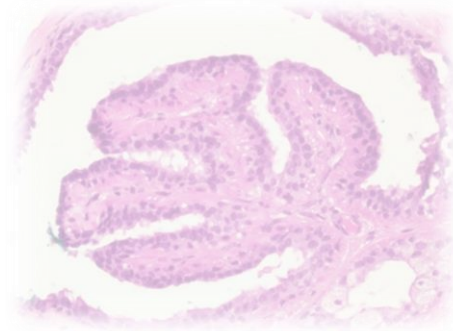


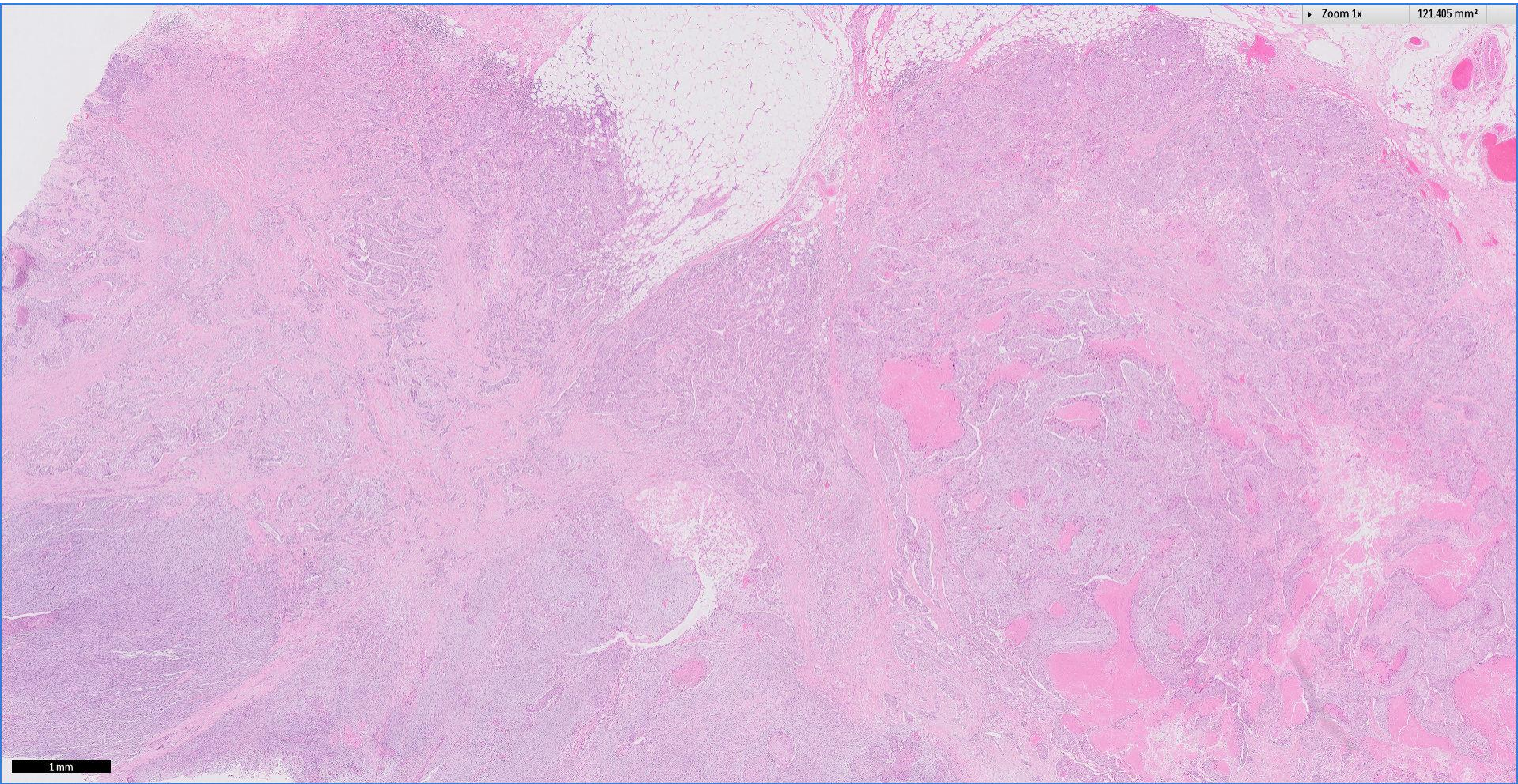
Case 5

41 year old Burmese female.
Materials of 'left breast and axillary lymph nodes' submitted for histological review.
Section provided of the left breast tumour.



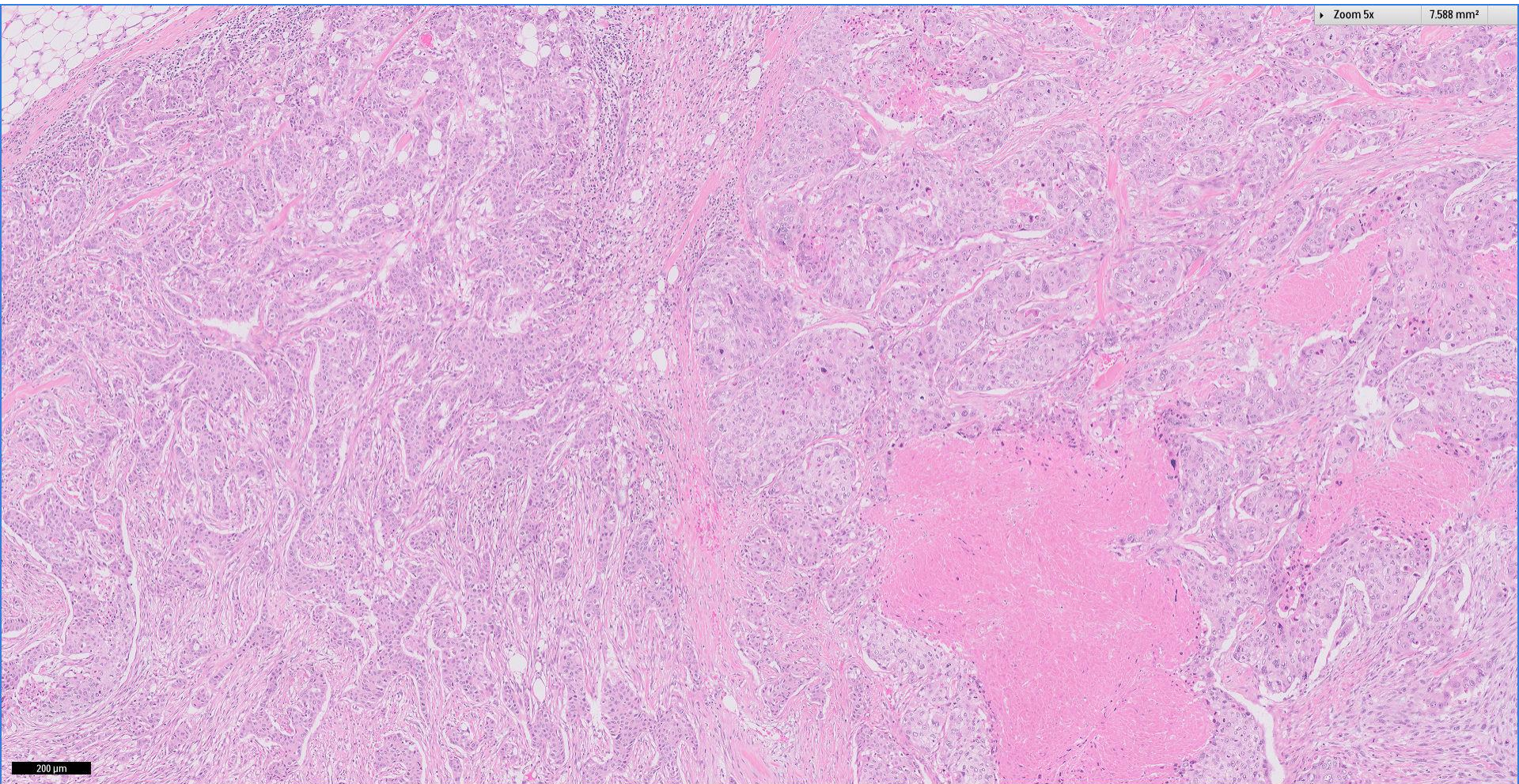
Zoom 1x

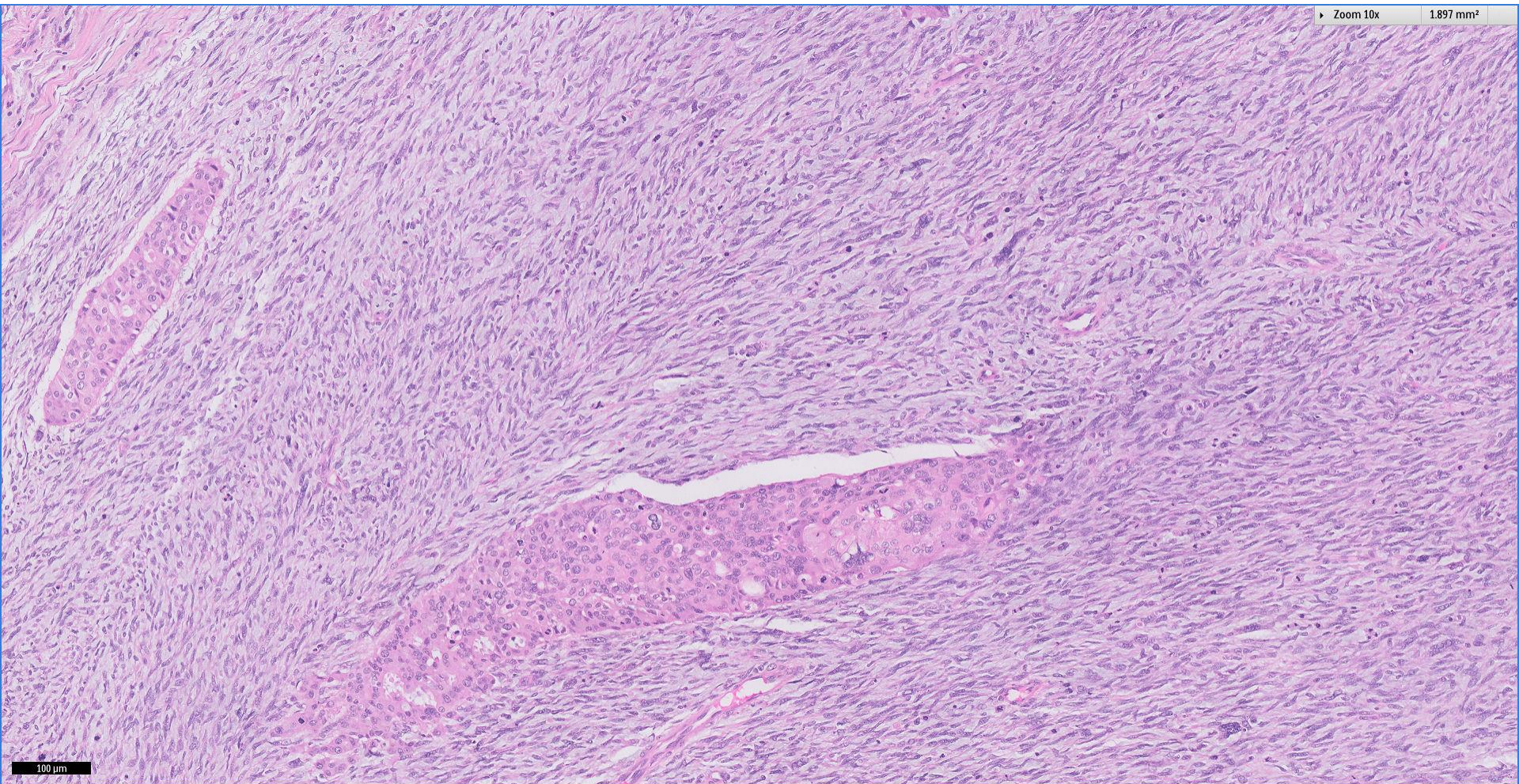
121.405 mm²



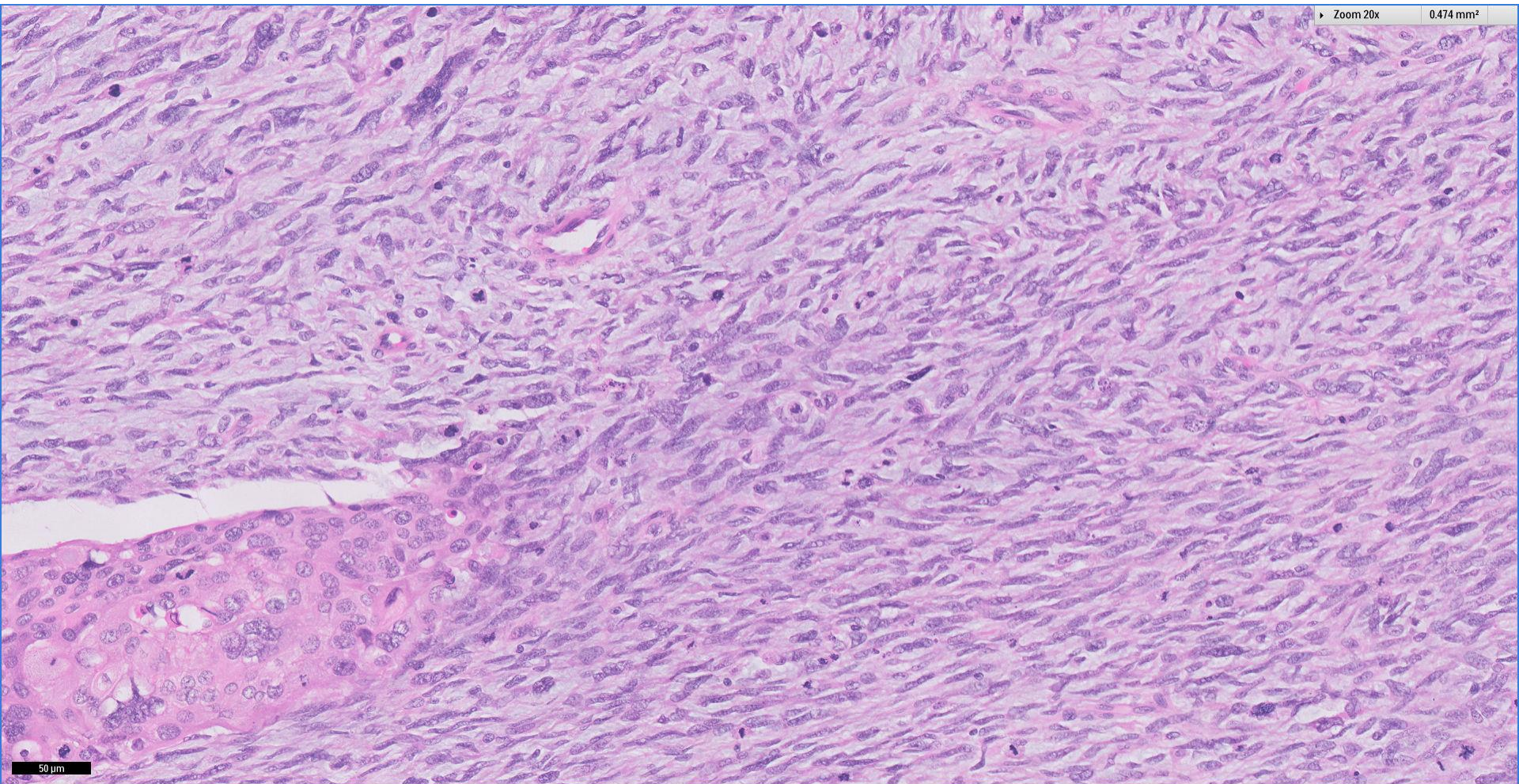
Division of Pathology
Singapore General Hospital



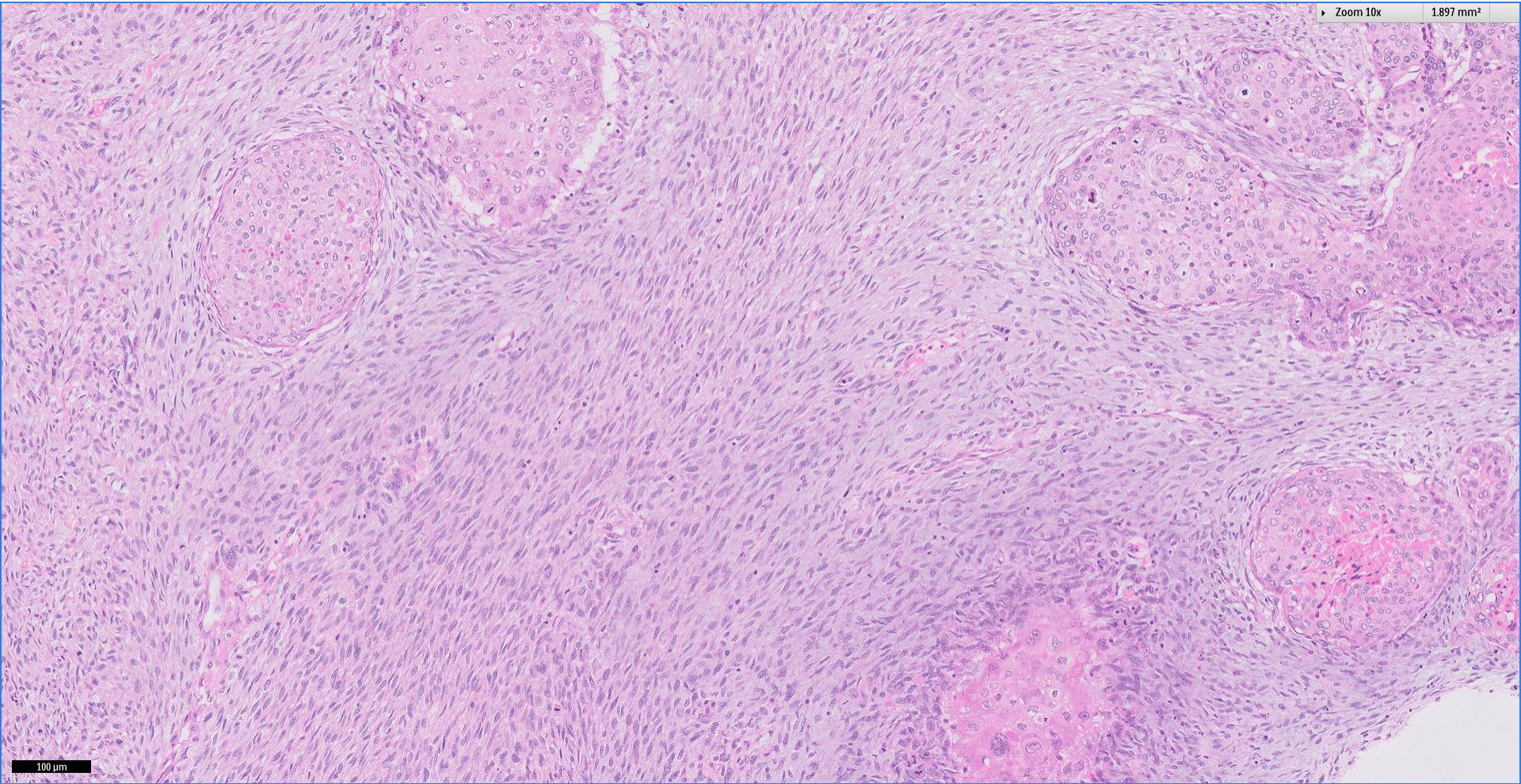




100 µm



Zoom 10x 1.897 mm²



Division of Pathology
Singapore General Hospital



Thank You