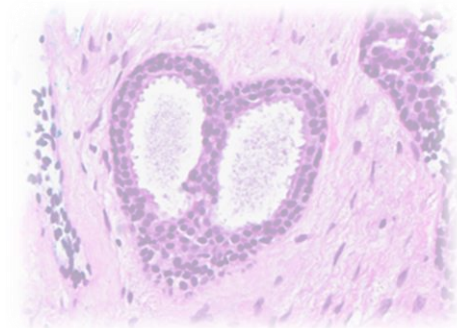
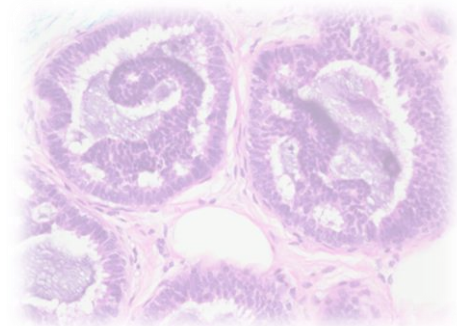
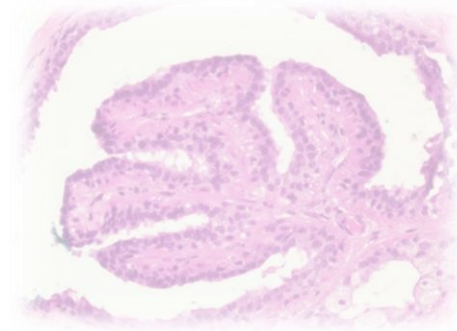
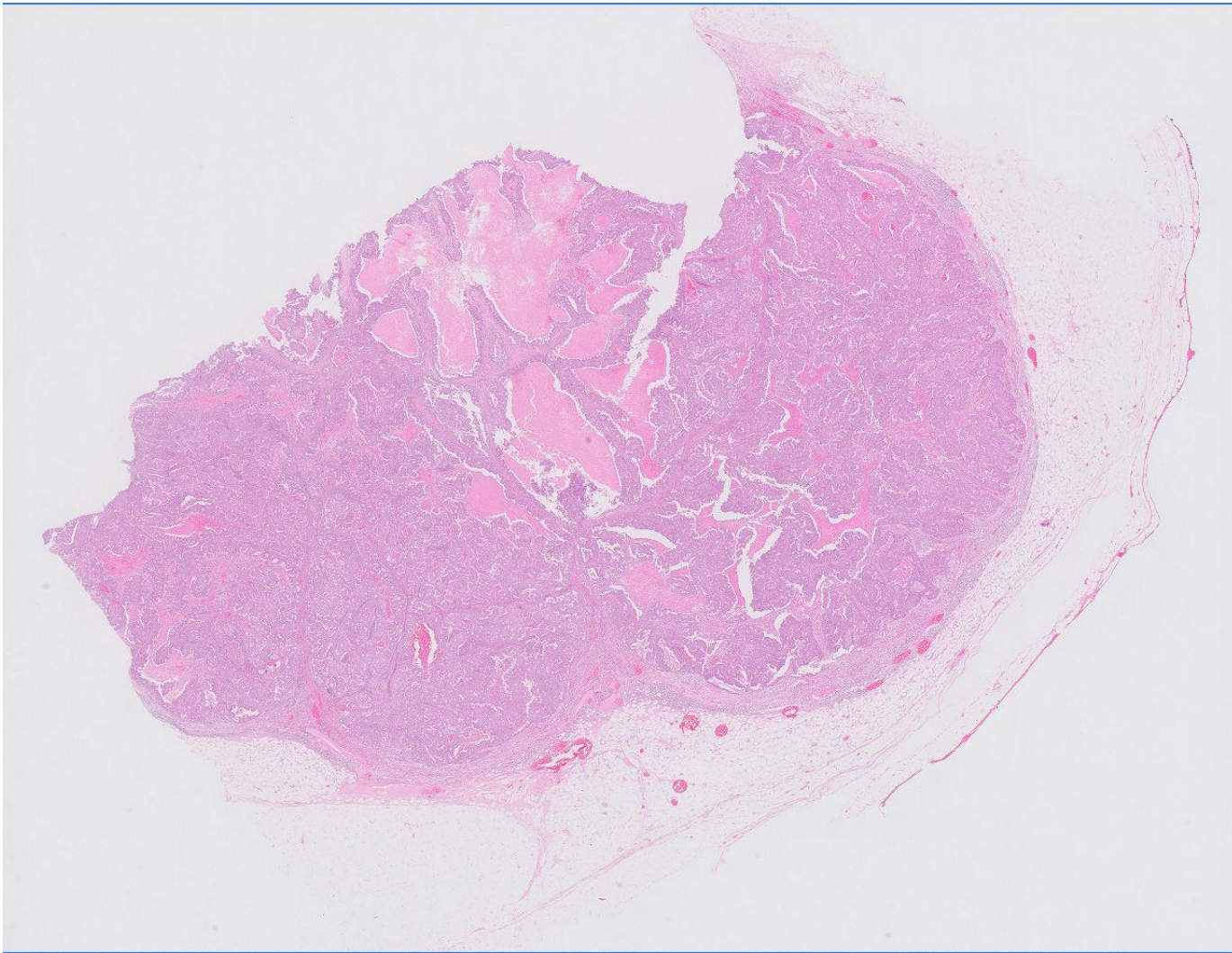


## Case 1

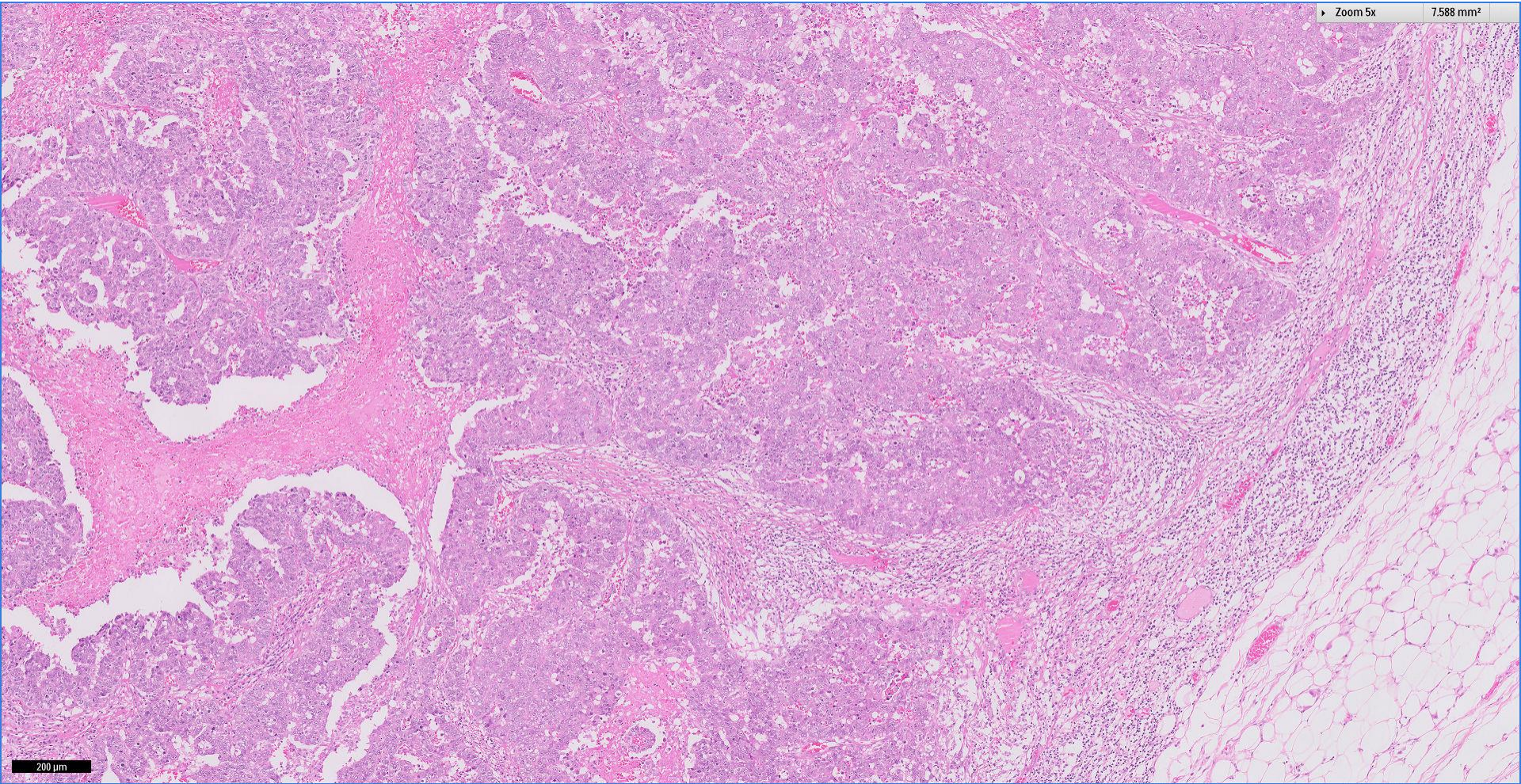
59 year old Chinese female.  
Right mastectomy done for trucut  
biopsy diagnosed invasive carcinoma  
with ductal features.





**Division of Pathology**  
**Singapore General Hospital**



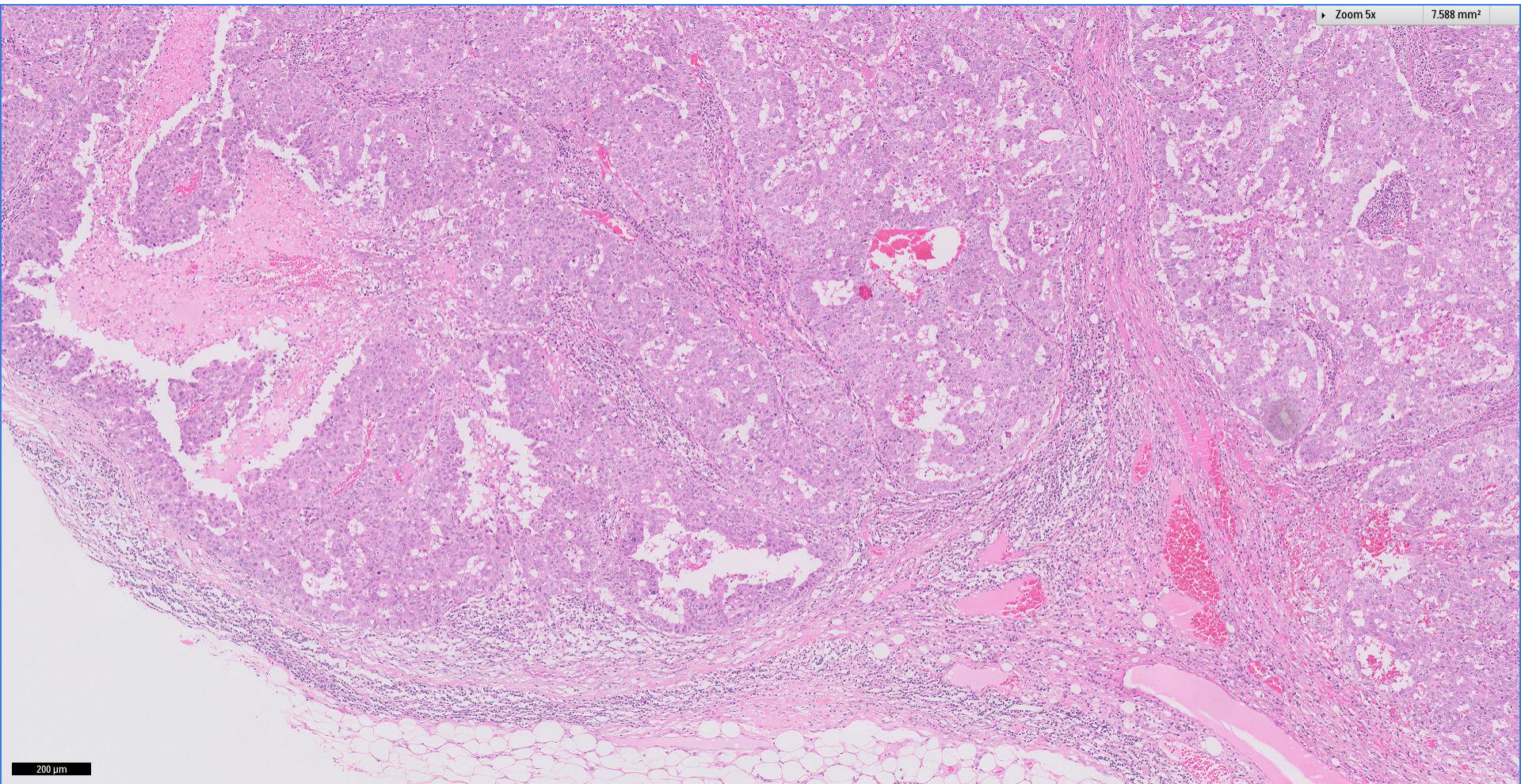


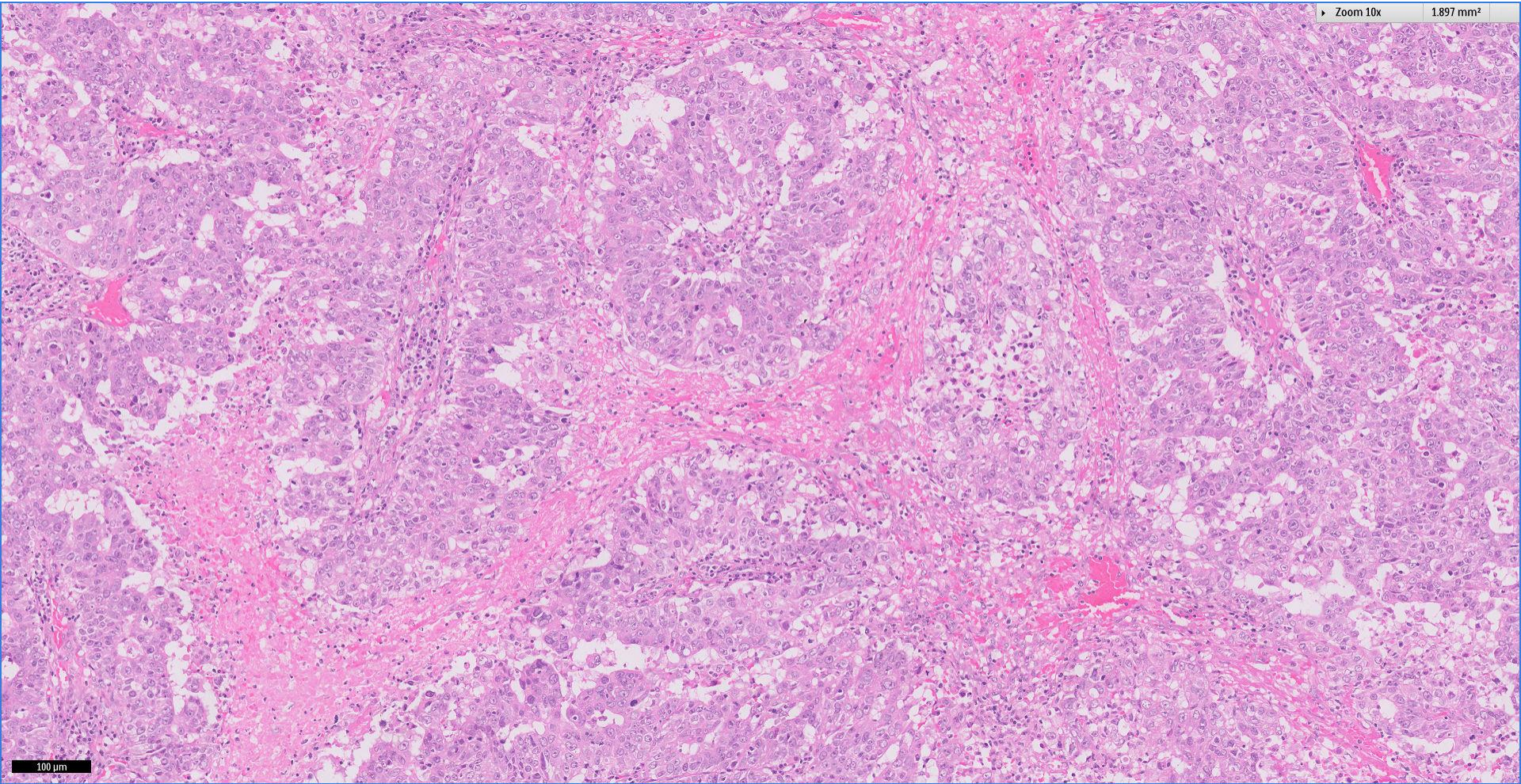
200  $\mu$ m



**Division of Pathology**  
**Singapore General Hospital**





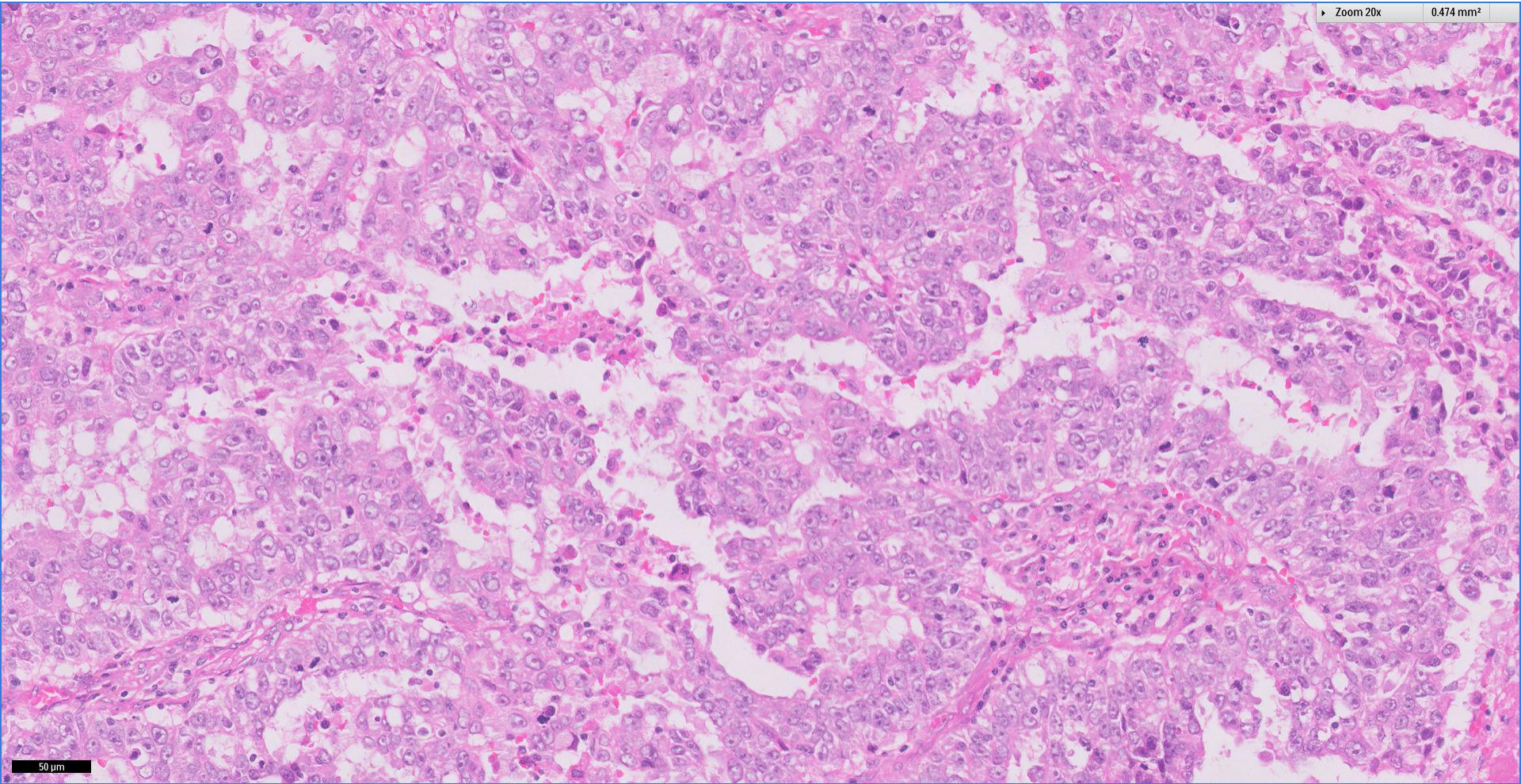


100 µm



Division of Pathology  
Singapore General Hospital





50 µm



Division of Pathology  
Singapore General Hospital



*Thank You*