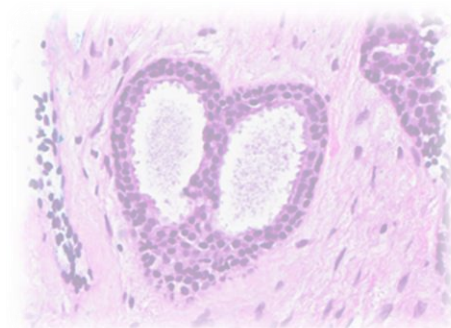
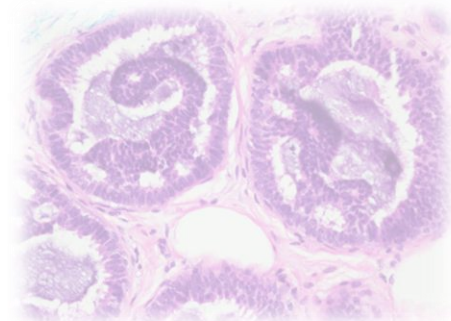
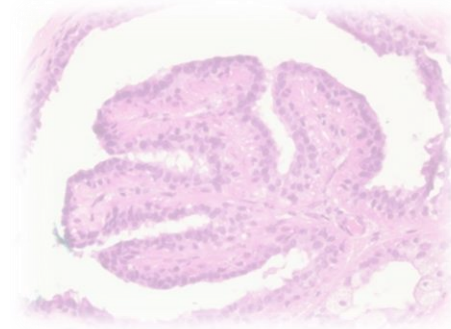


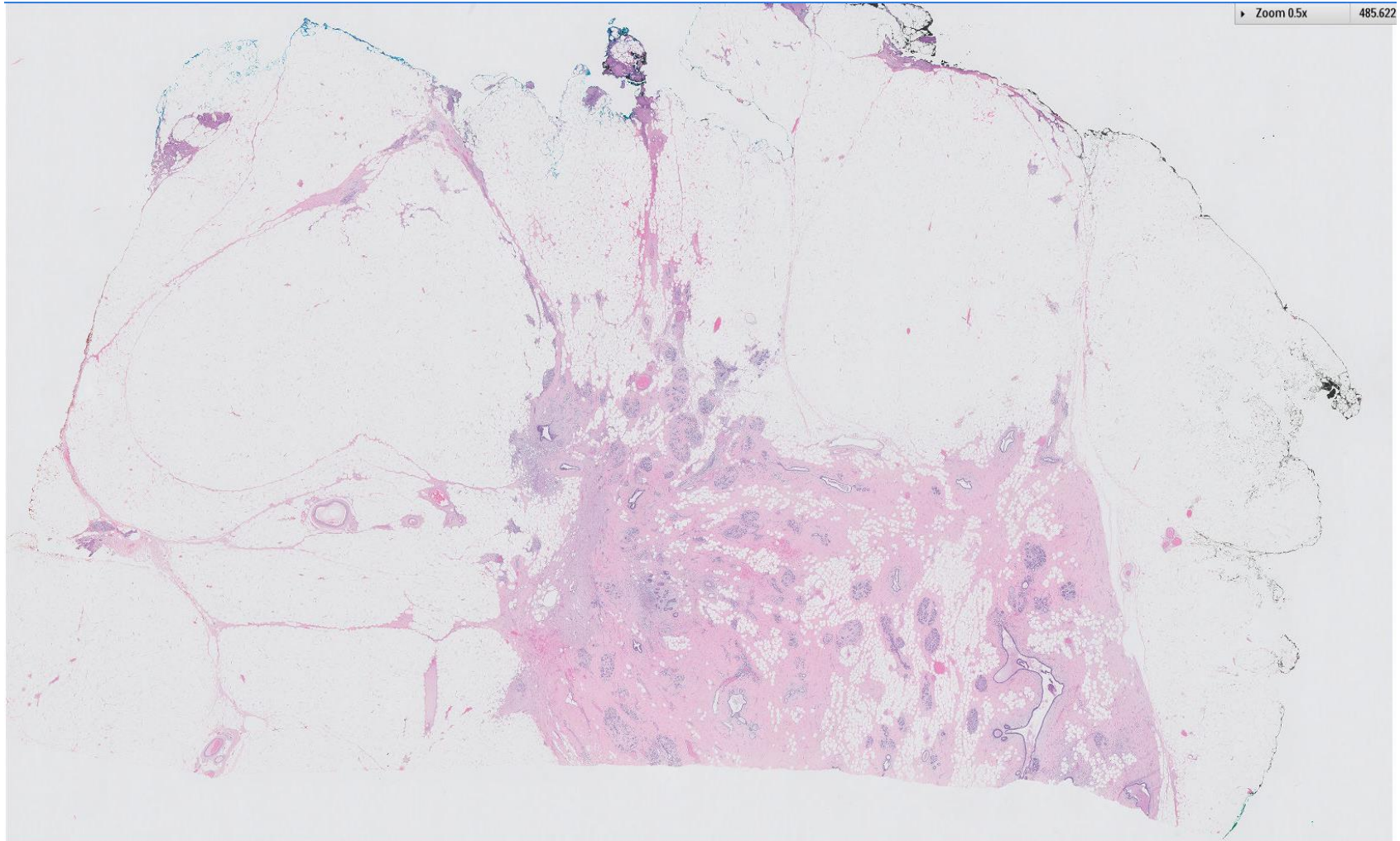
## Case 33

41 year old female.

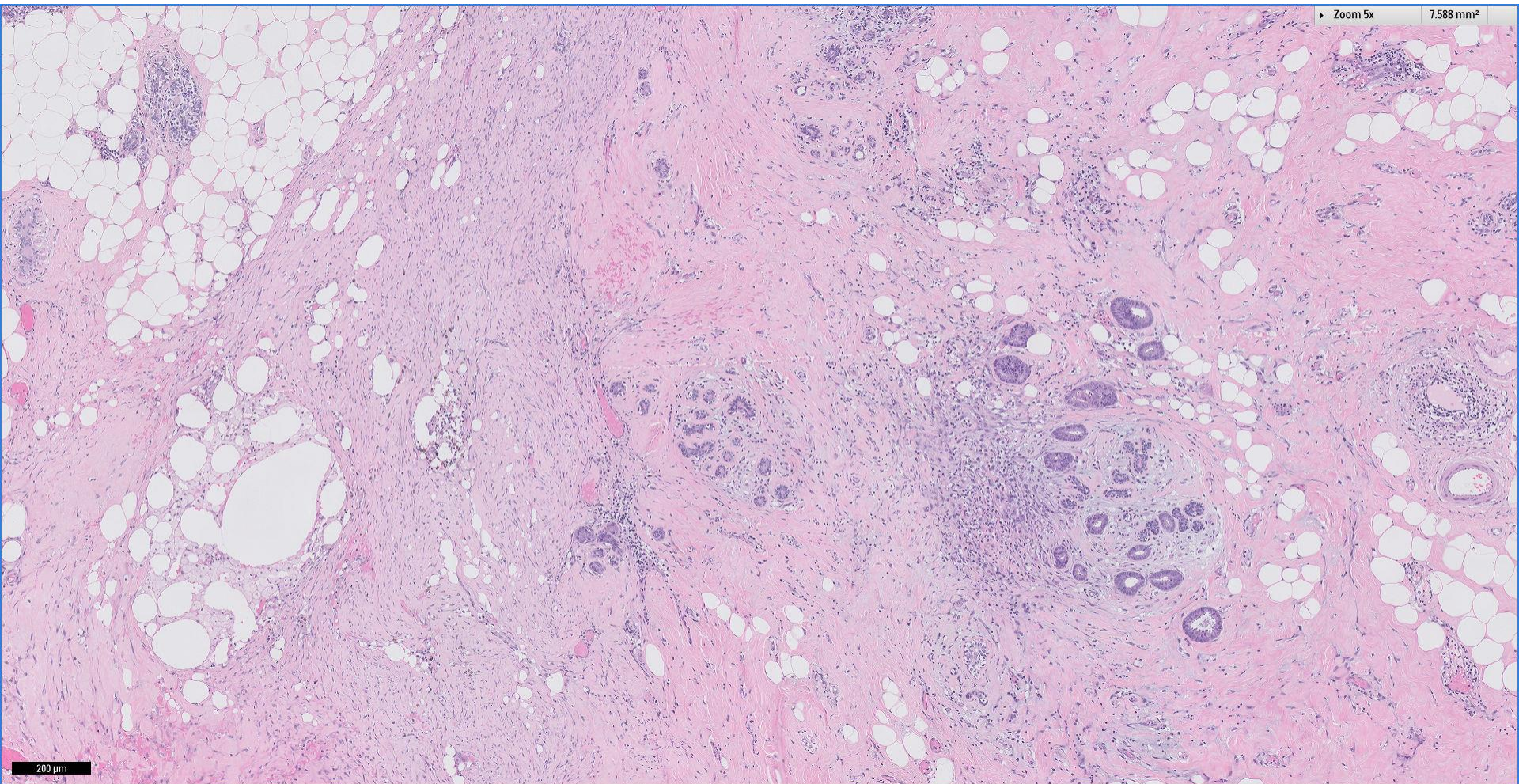
Right breast 12 o'clock tumour.

*Contributed by Dr Mihir Gudi, Kandang Kerbau  
Women's and Children's Hospital*

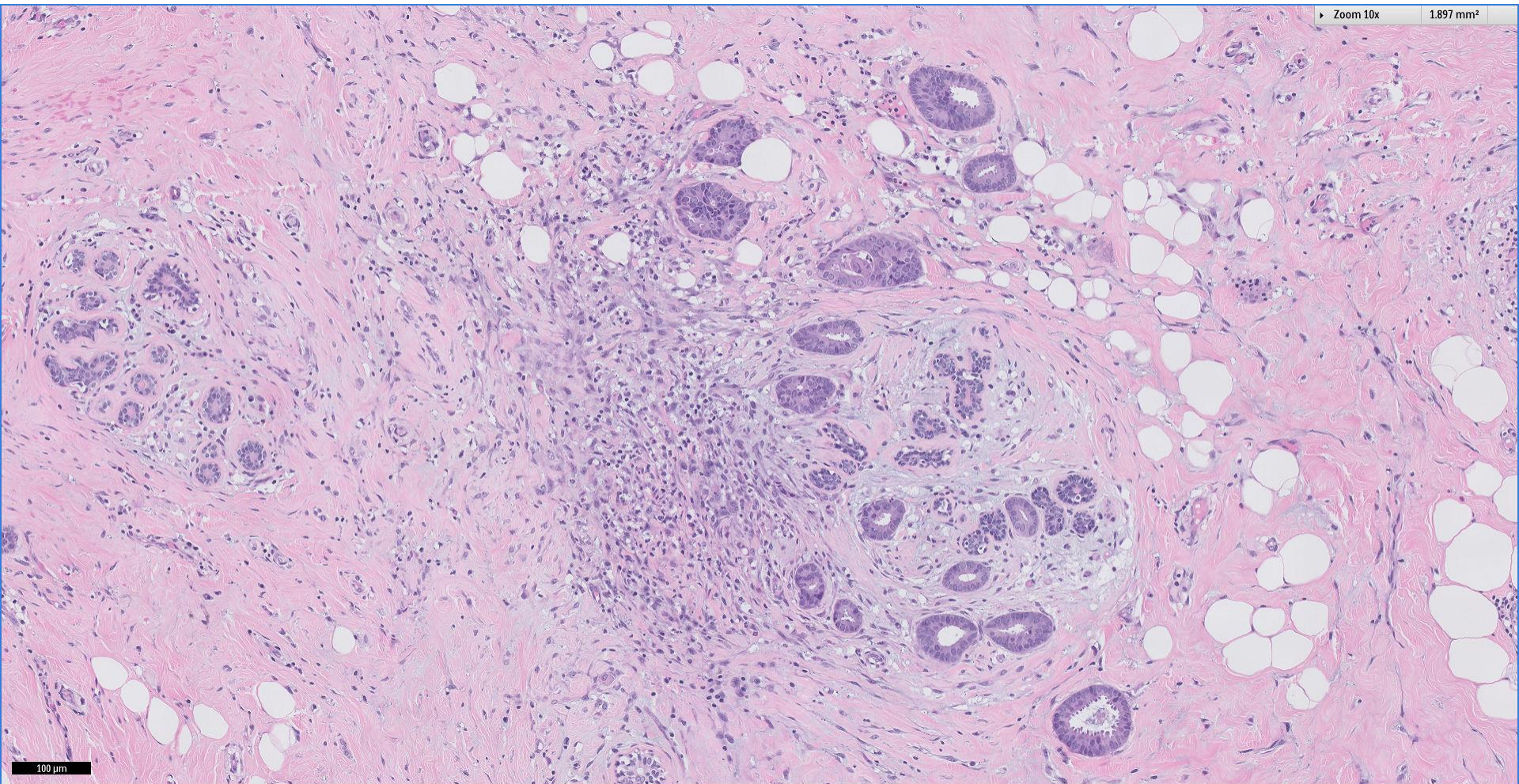




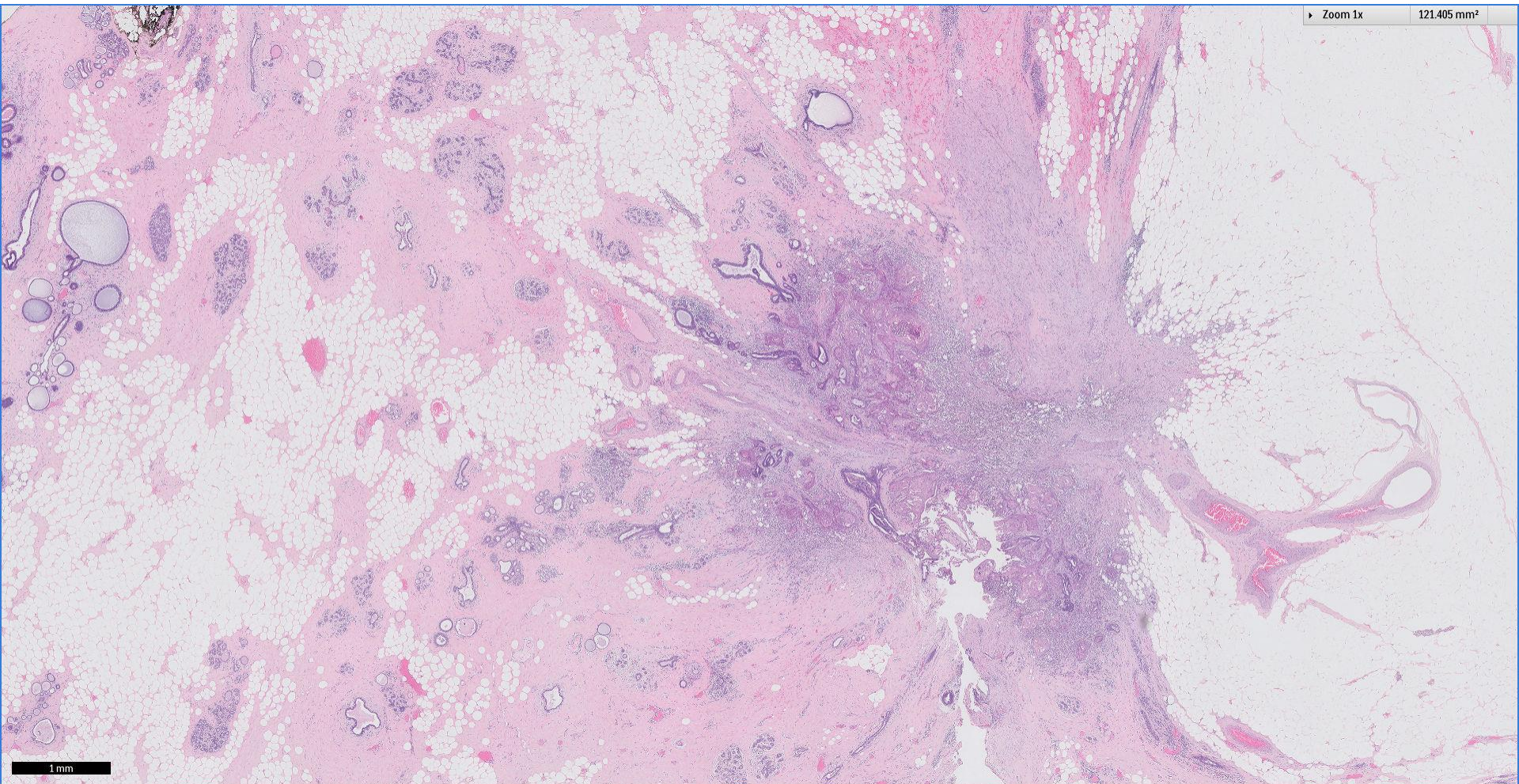




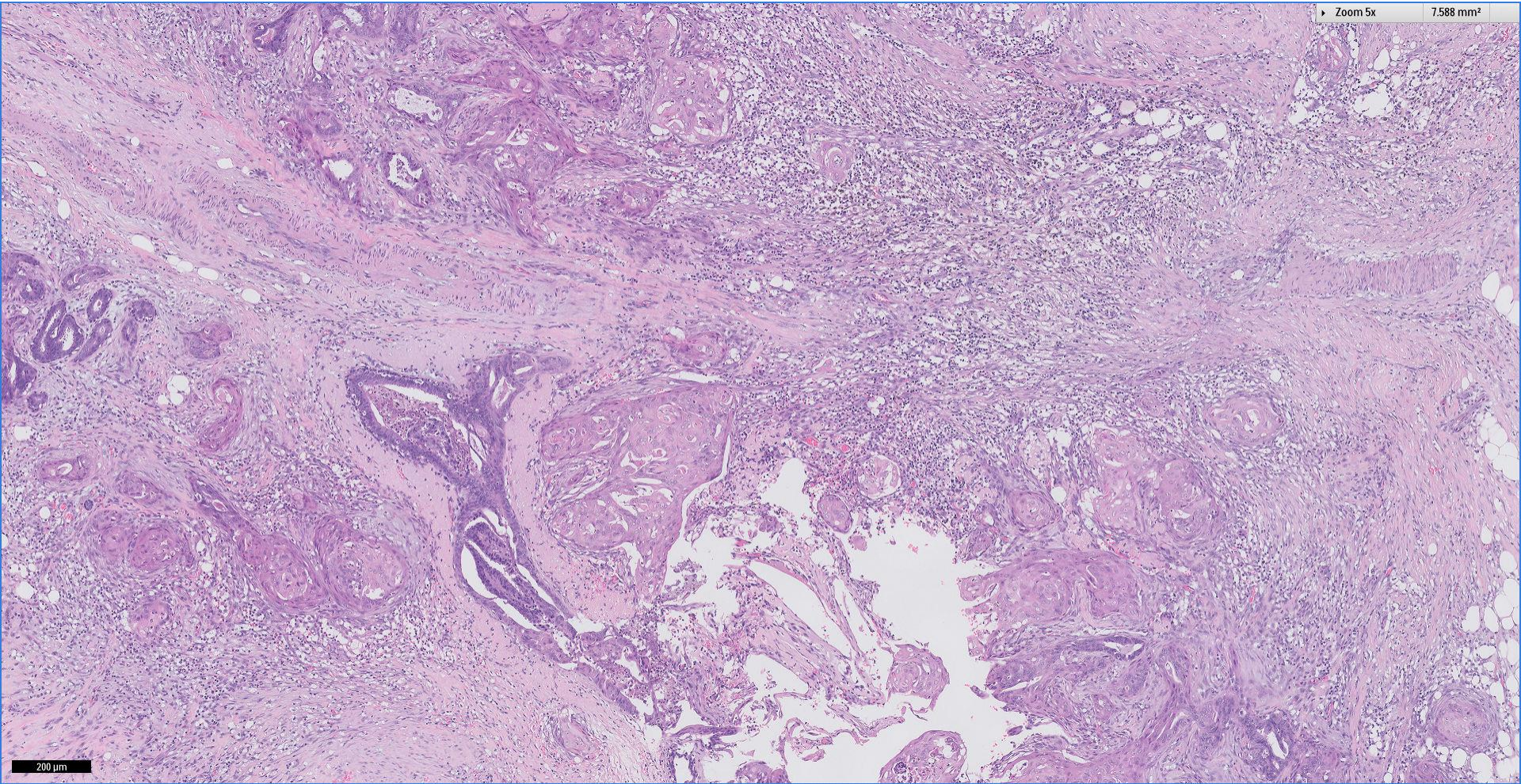












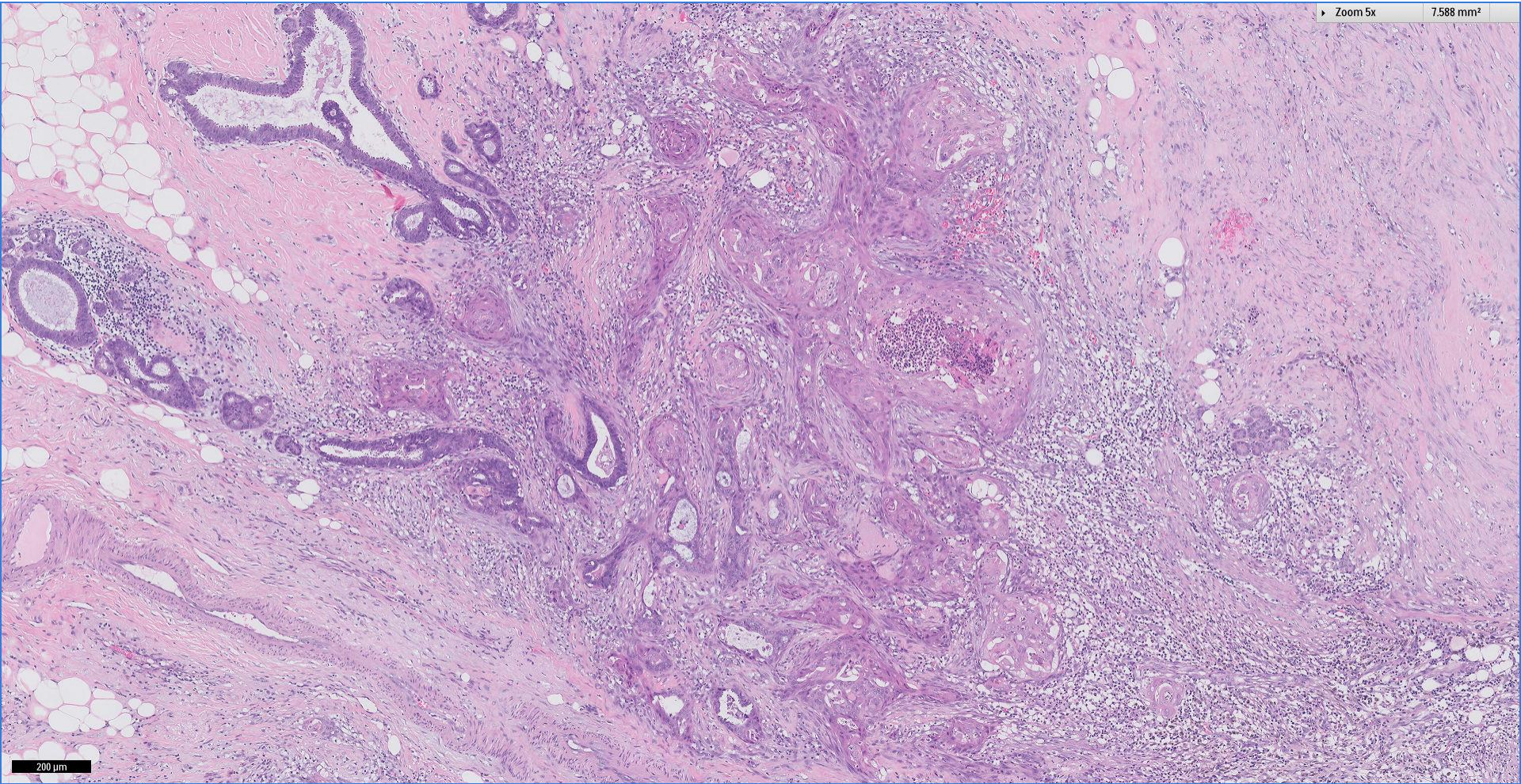
200 µm



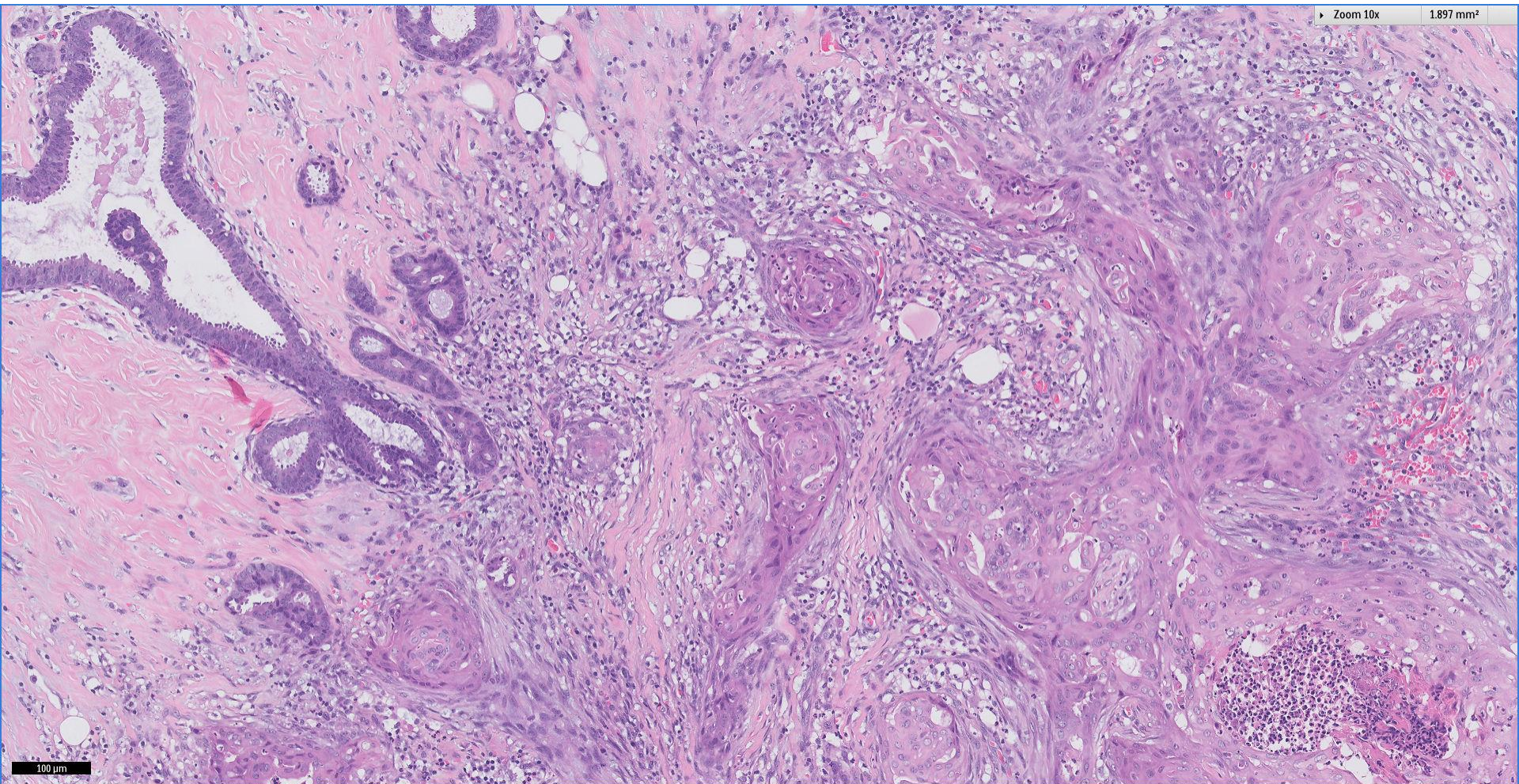
Division of Pathology  
Singapore General Hospital



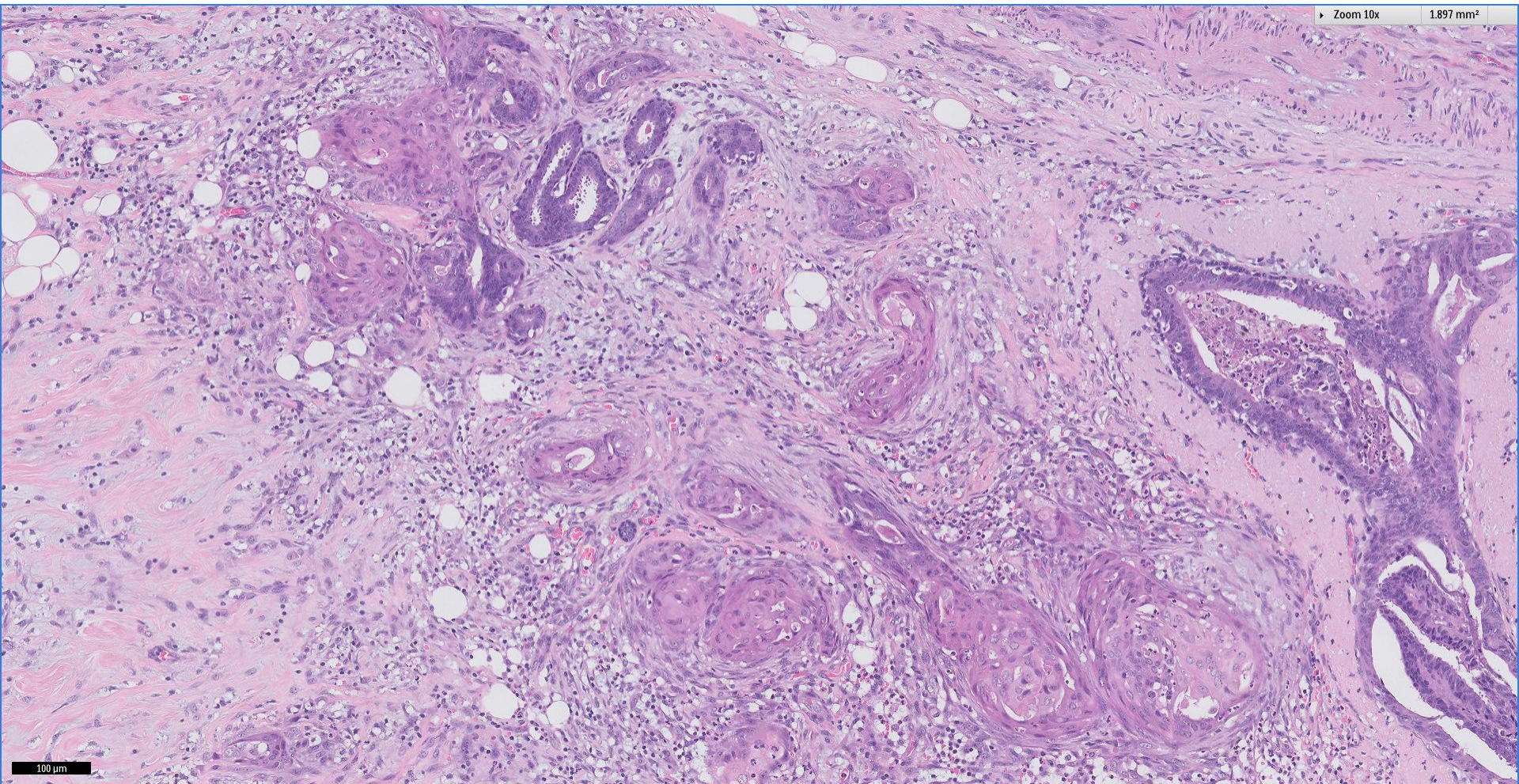




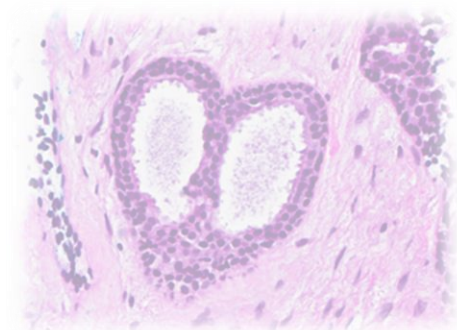
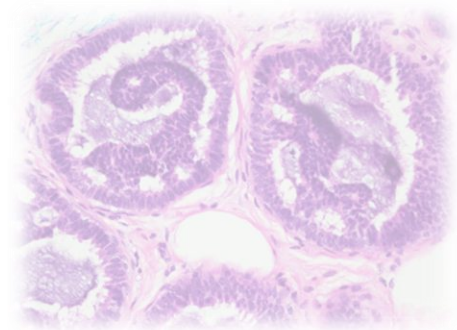
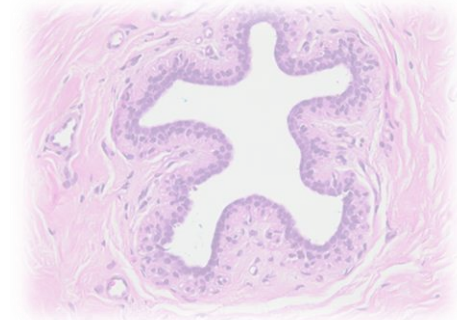
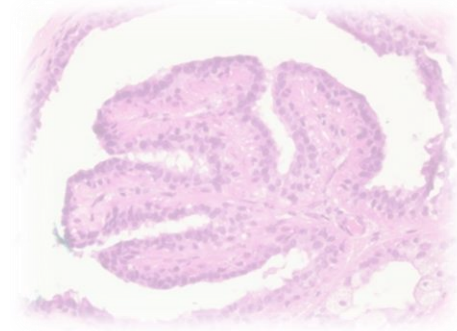








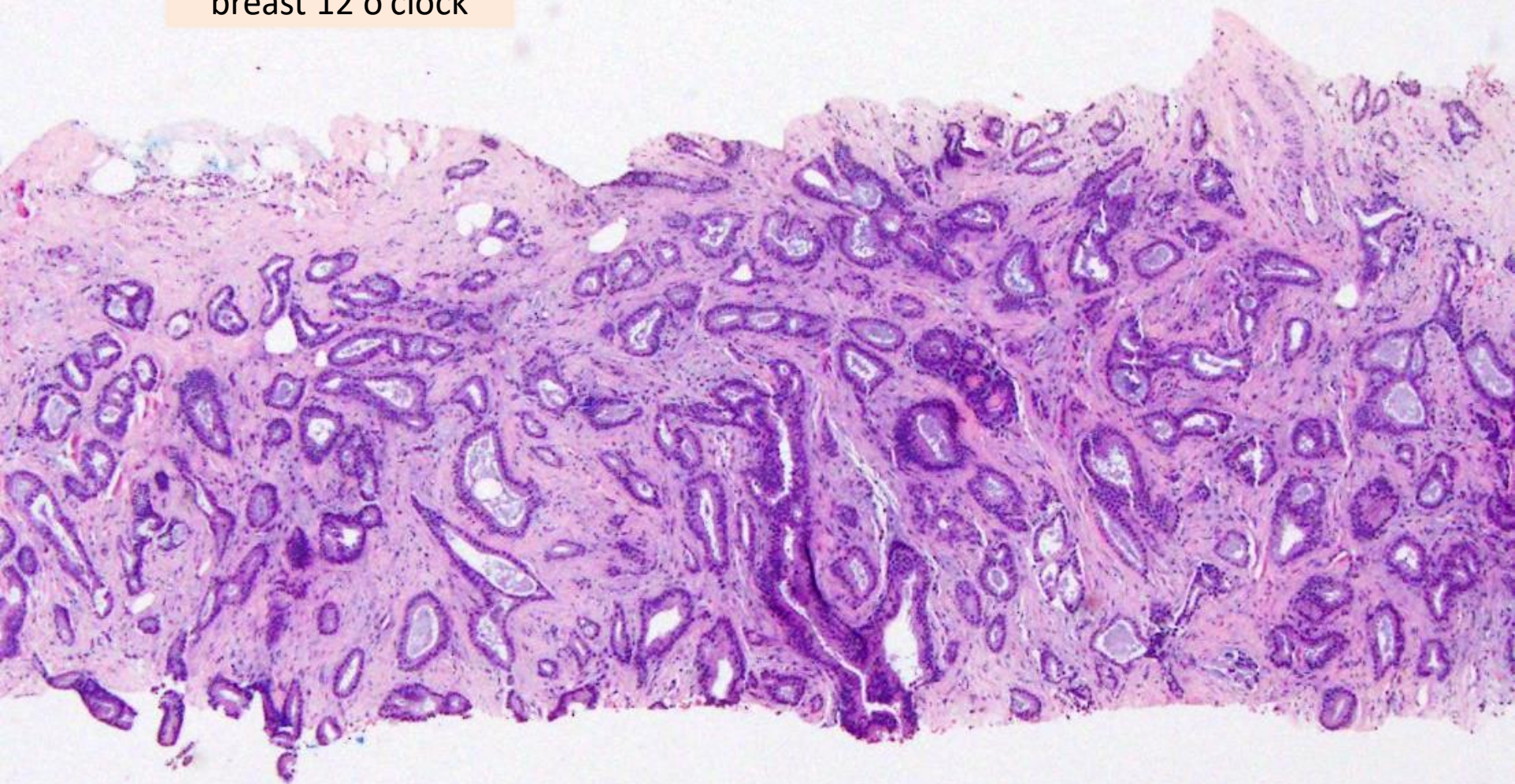




# *Additional pictures*

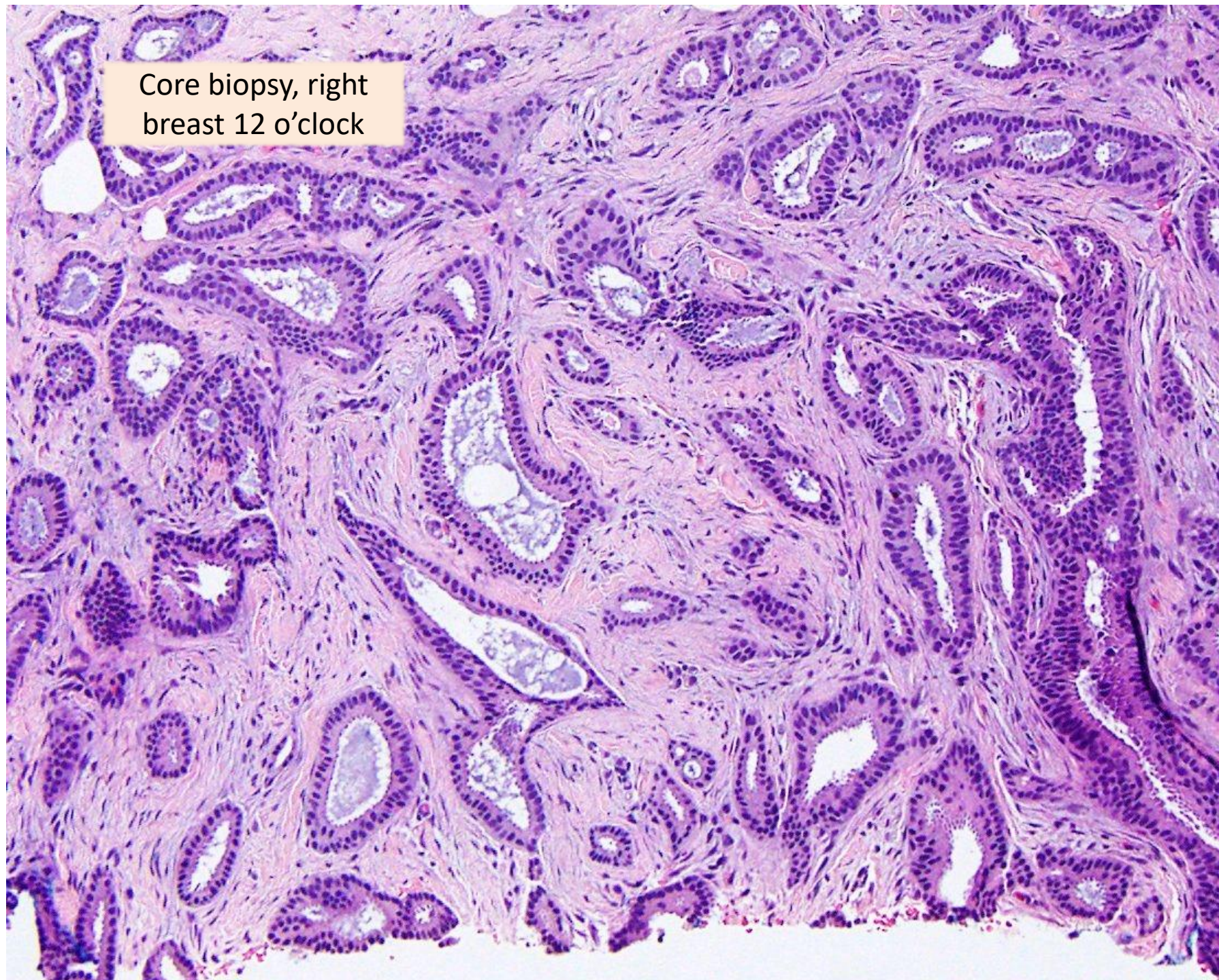


Core biopsy, right  
breast 12 o'clock



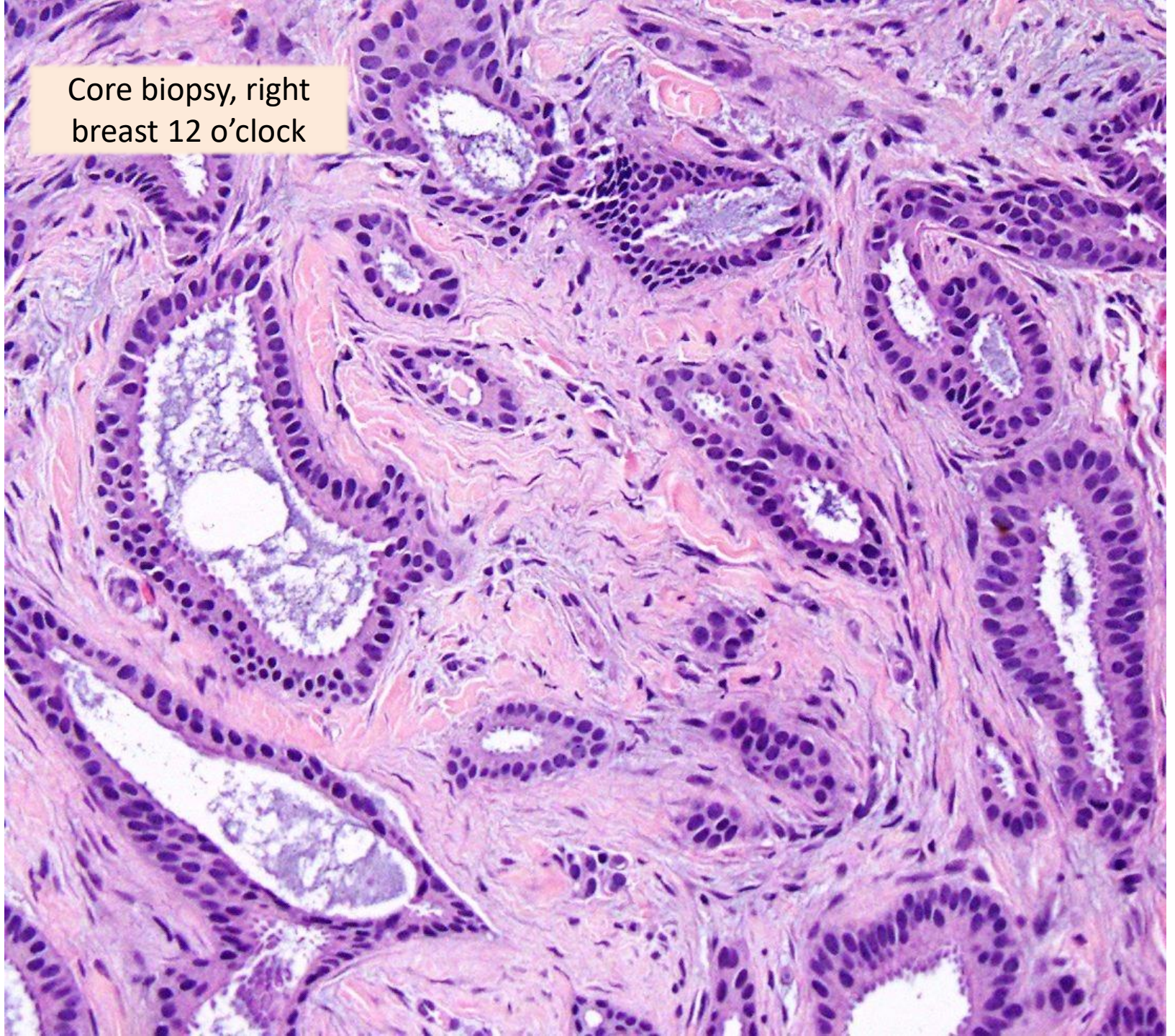


Core biopsy, right  
breast 12 o'clock





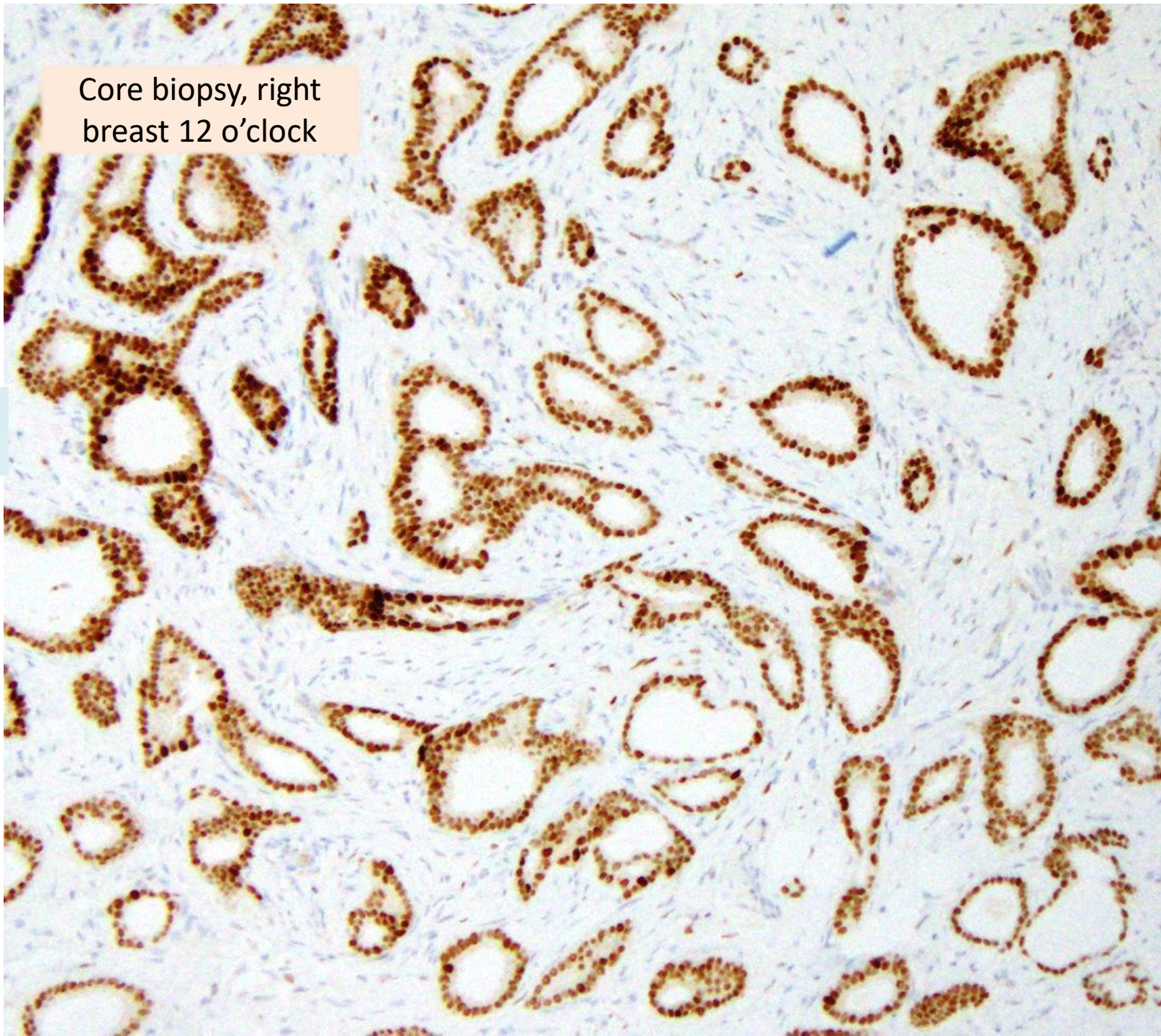
Core biopsy, right  
breast 12 o'clock





Core biopsy, right breast 12 o'clock

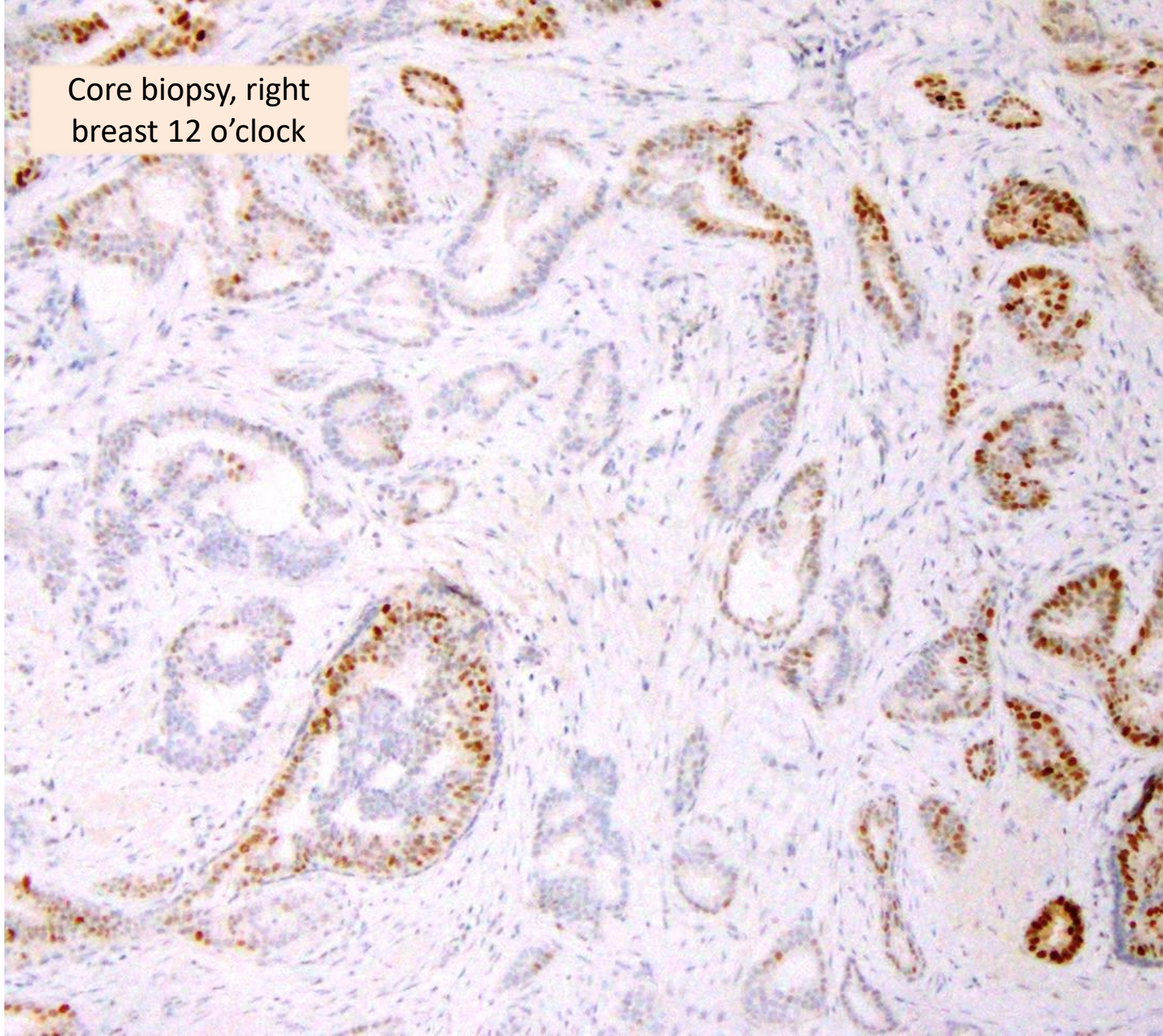
ER





Core biopsy, right  
breast 12 o'clock

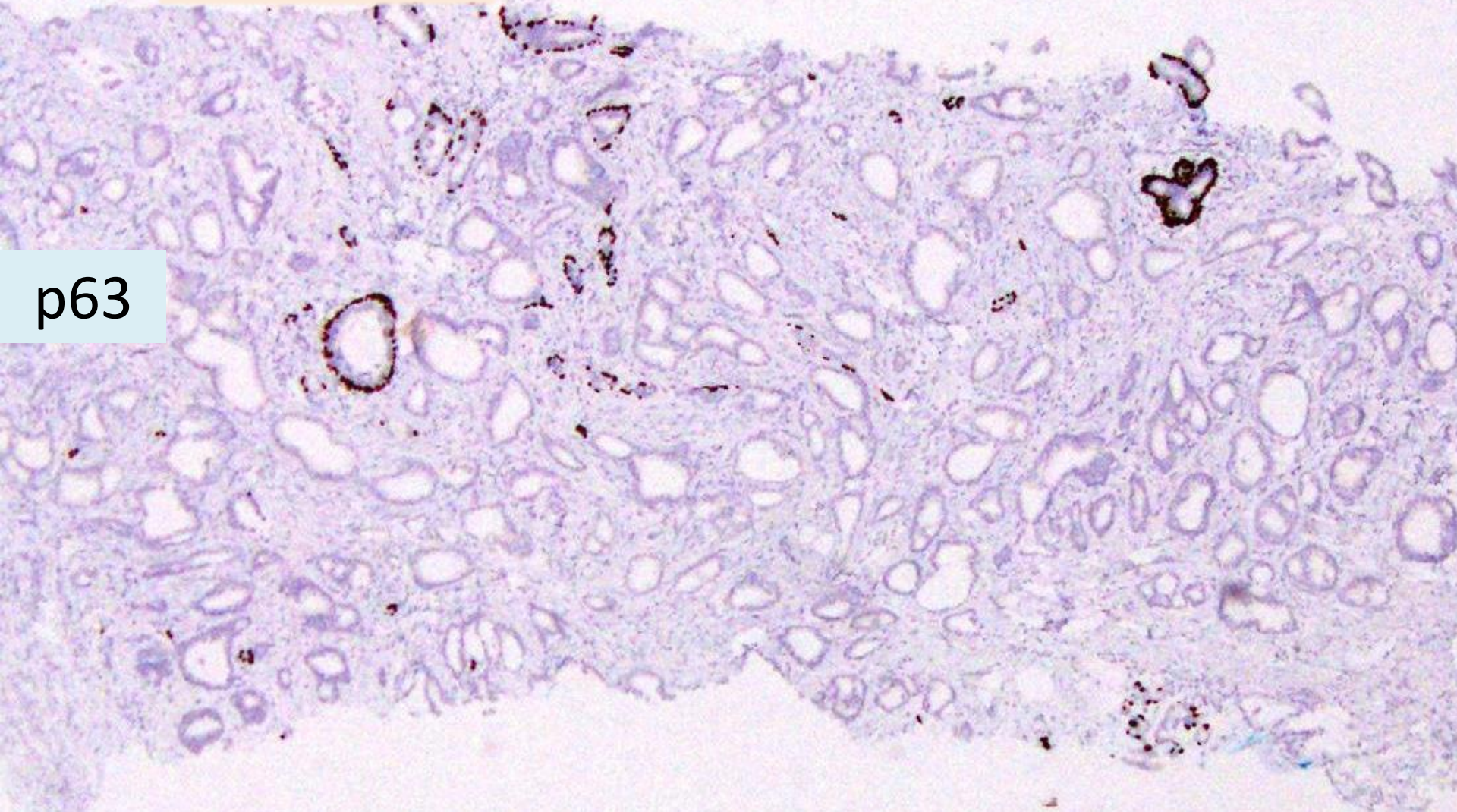
PR





Core biopsy, right  
breast 12 o'clock

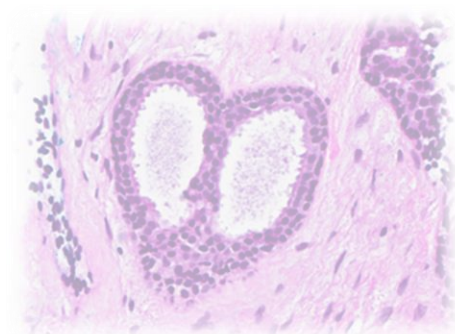
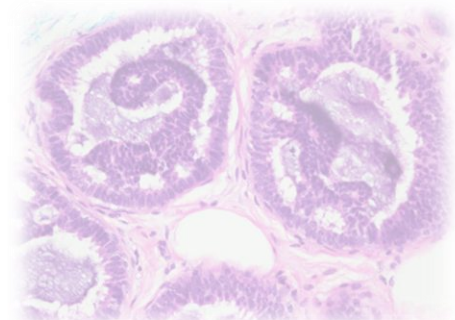
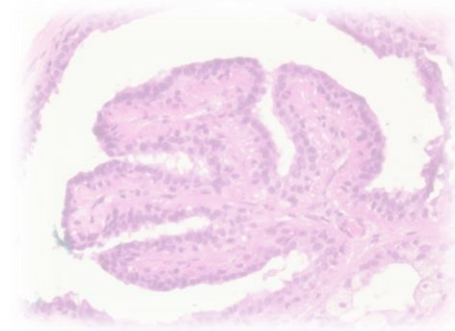
p63





# Diagnosis, case 33

- Right breast 12 o'clock tumour:  
Invasive tubular carcinoma, grade 1,  
10mm.  
ER+, PR+, cerbB2-.  
Previous biopsy site changes with  
reactive squamous metaplasia.





*Thank You*