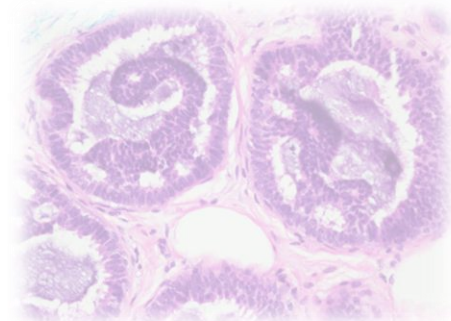
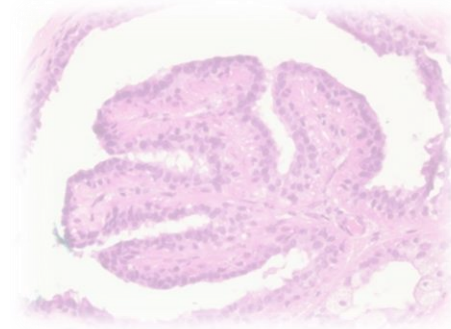


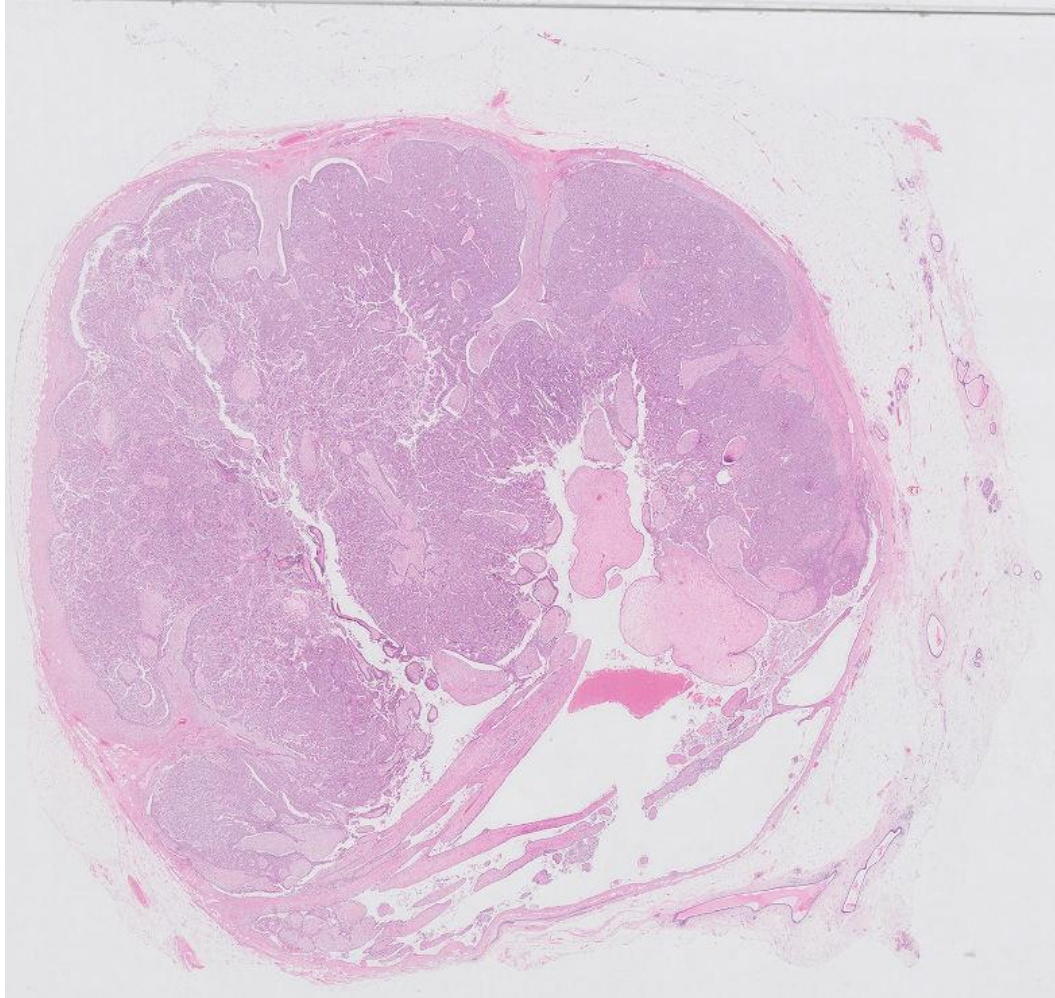
Case 25

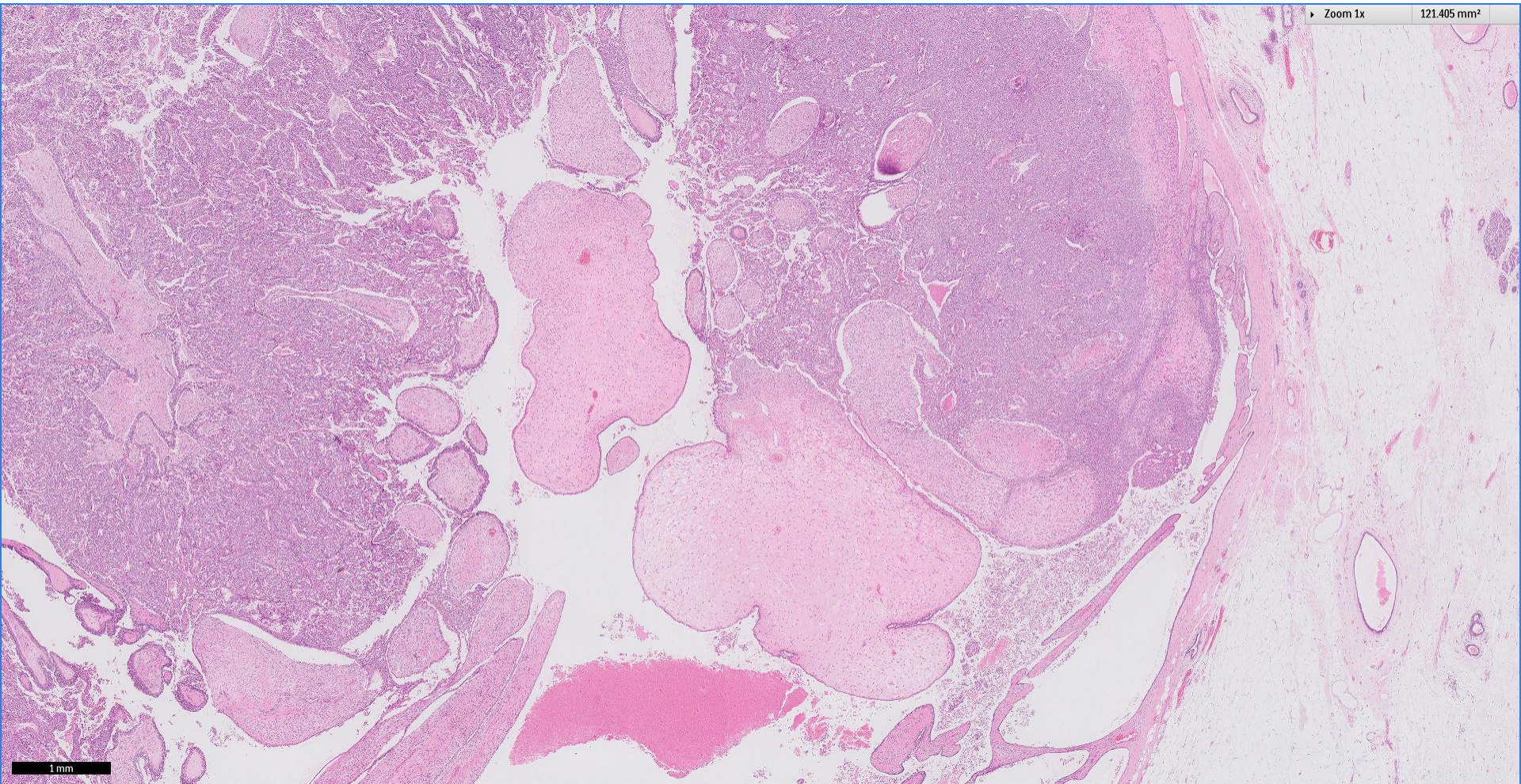
69 year old female.

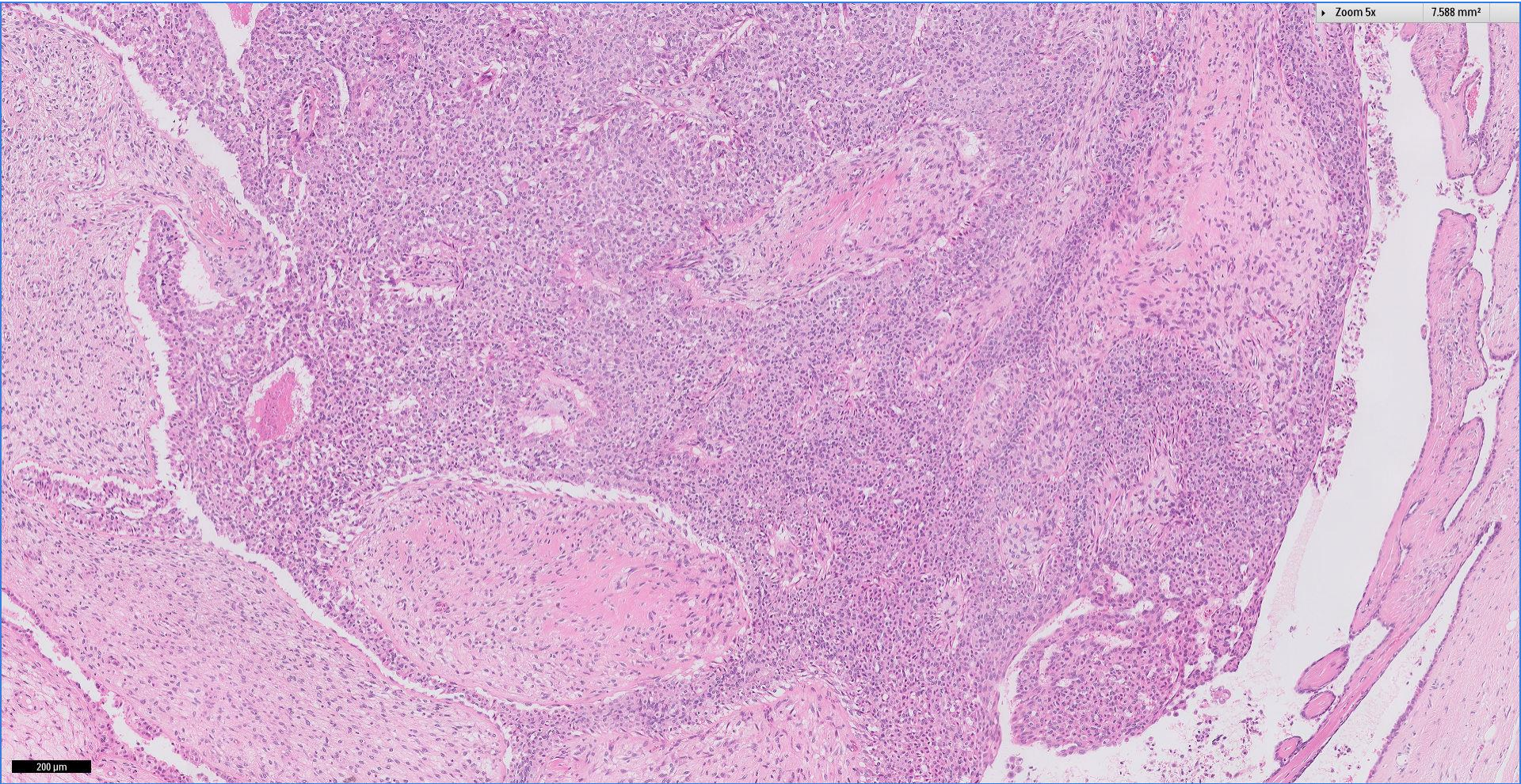
Breast tumour, excision biopsy.

Contributed by Dr Andrew Lee, Nottingham UK



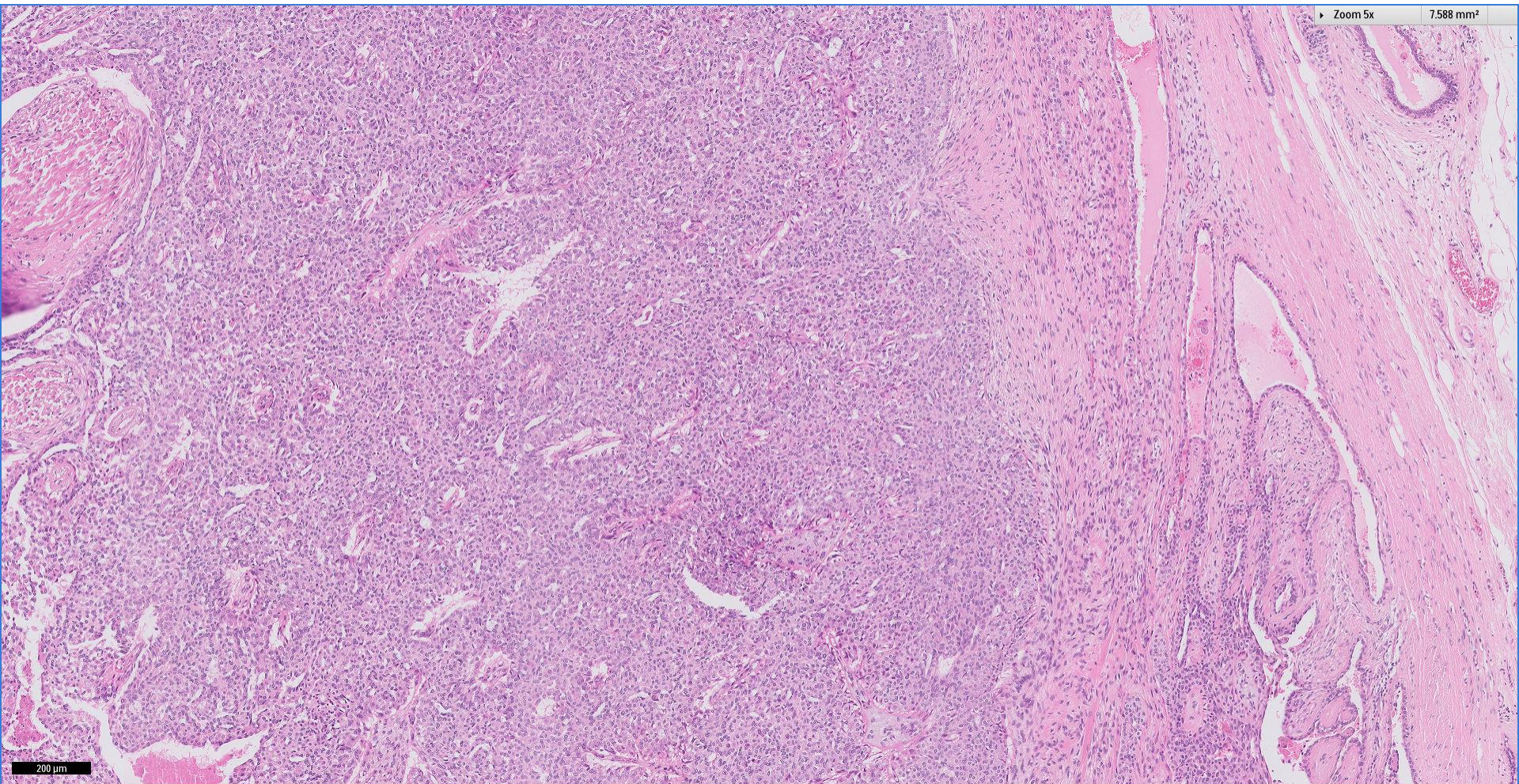




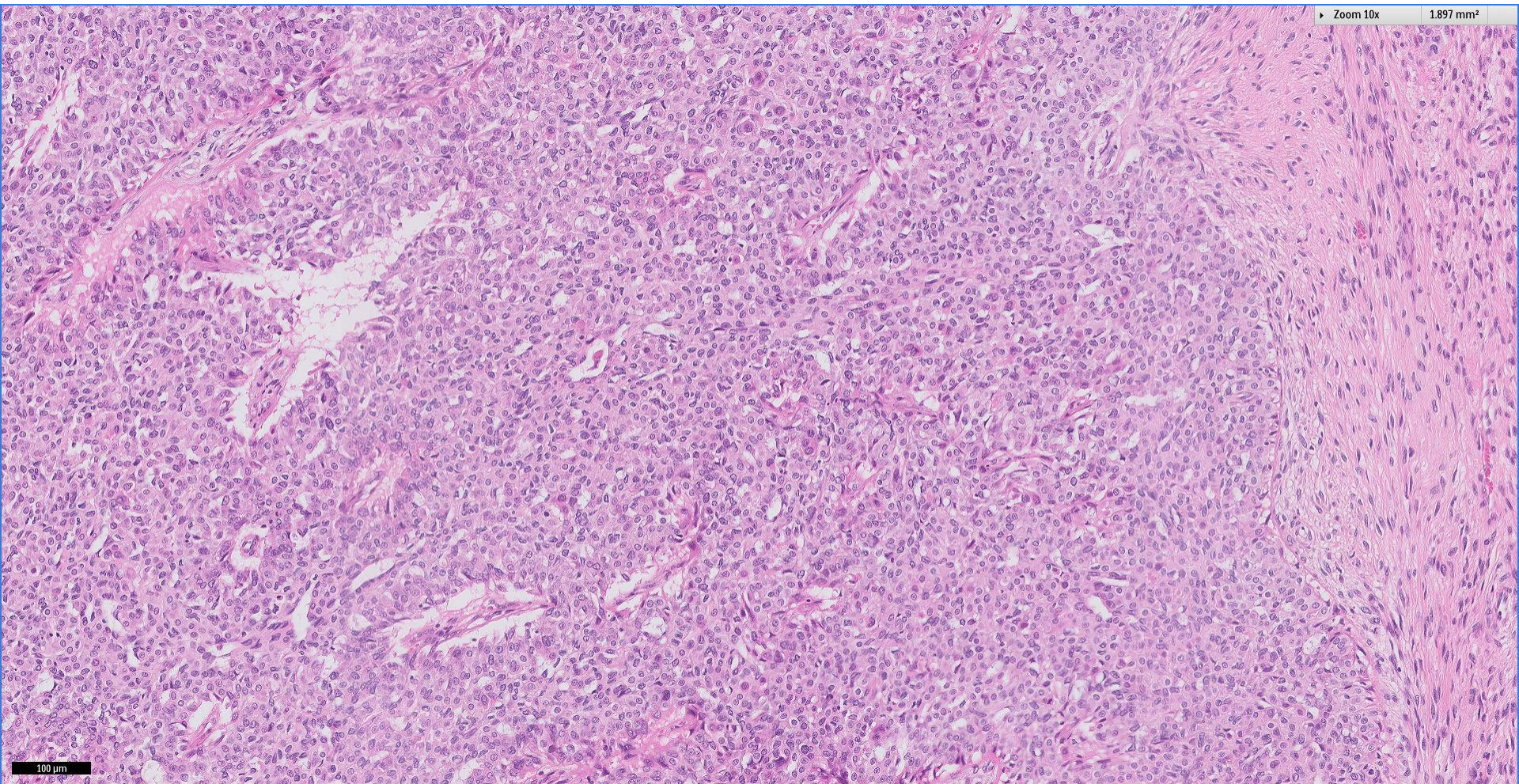


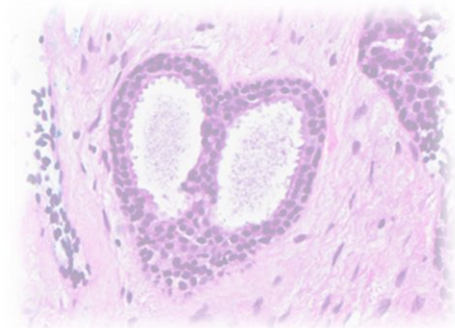
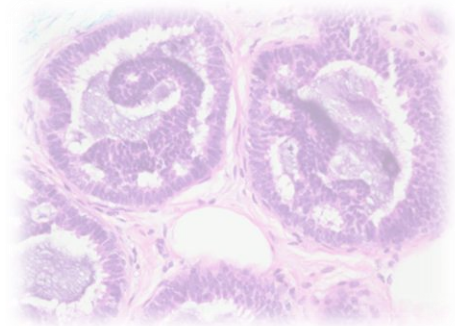
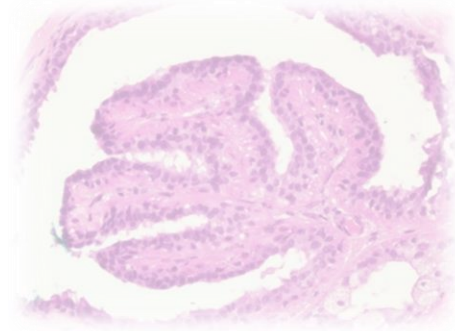
Division of Pathology
Singapore General Hospital



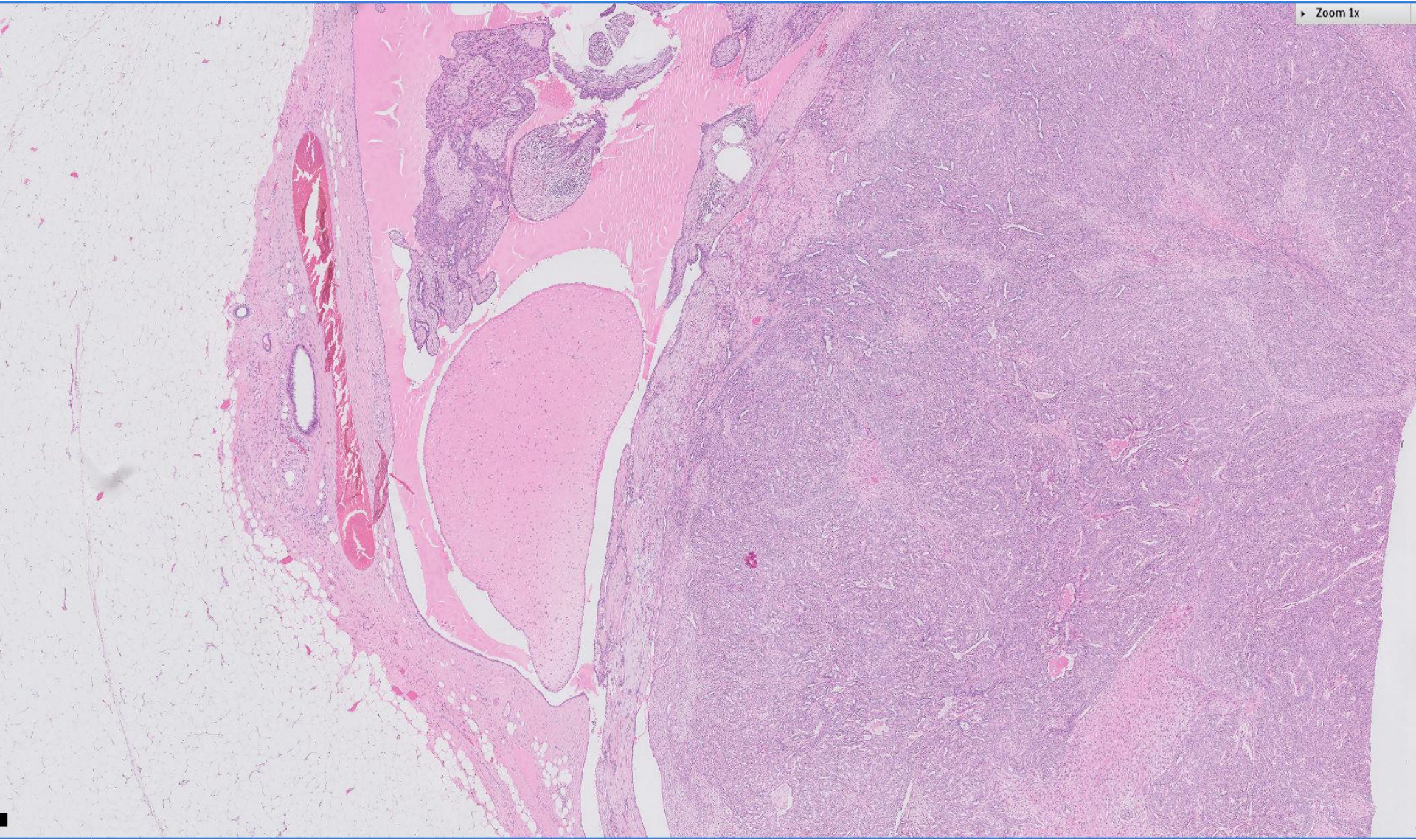


200 µm



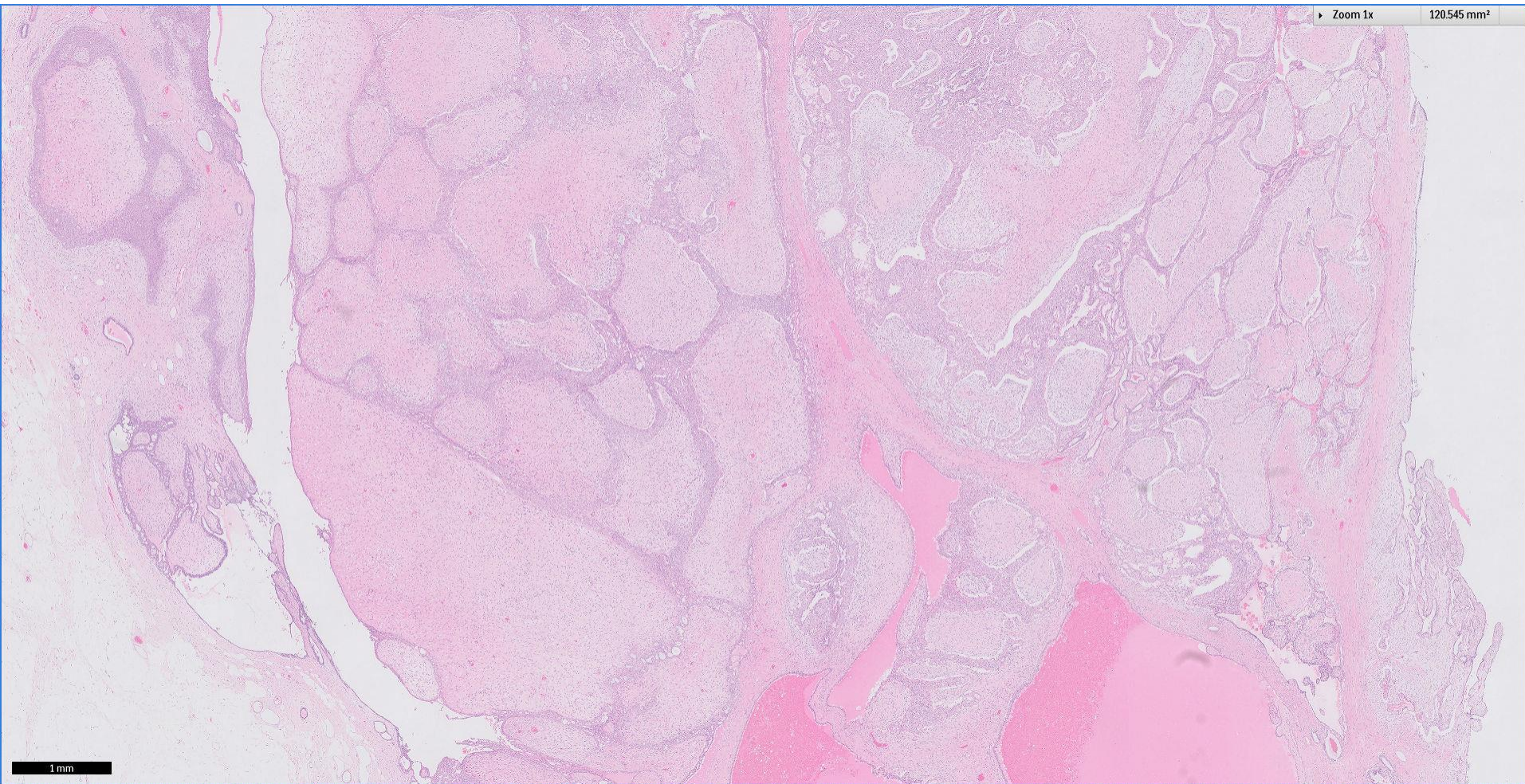


Additional pictures

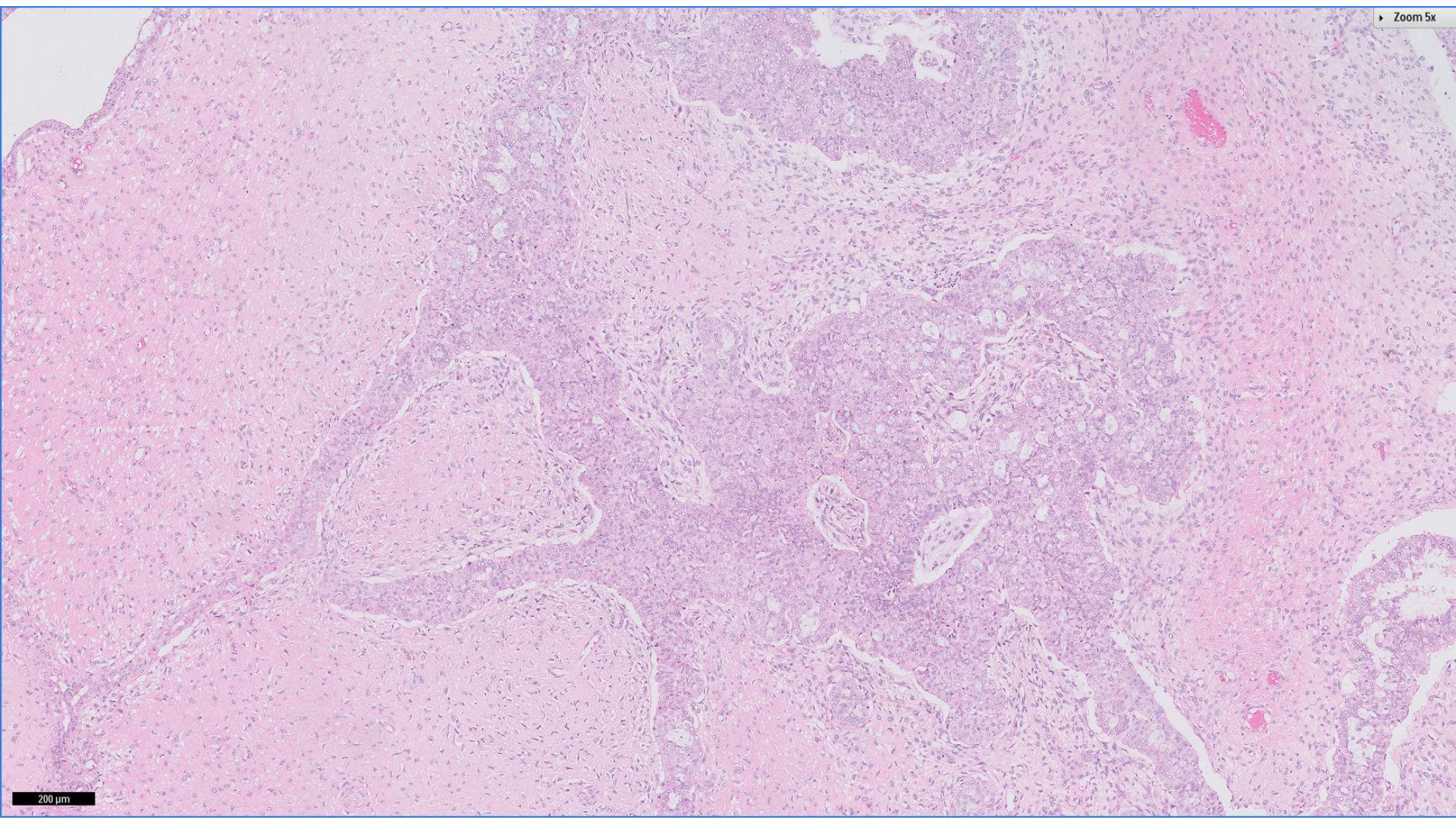


Zoom 1x

120.545 mm²



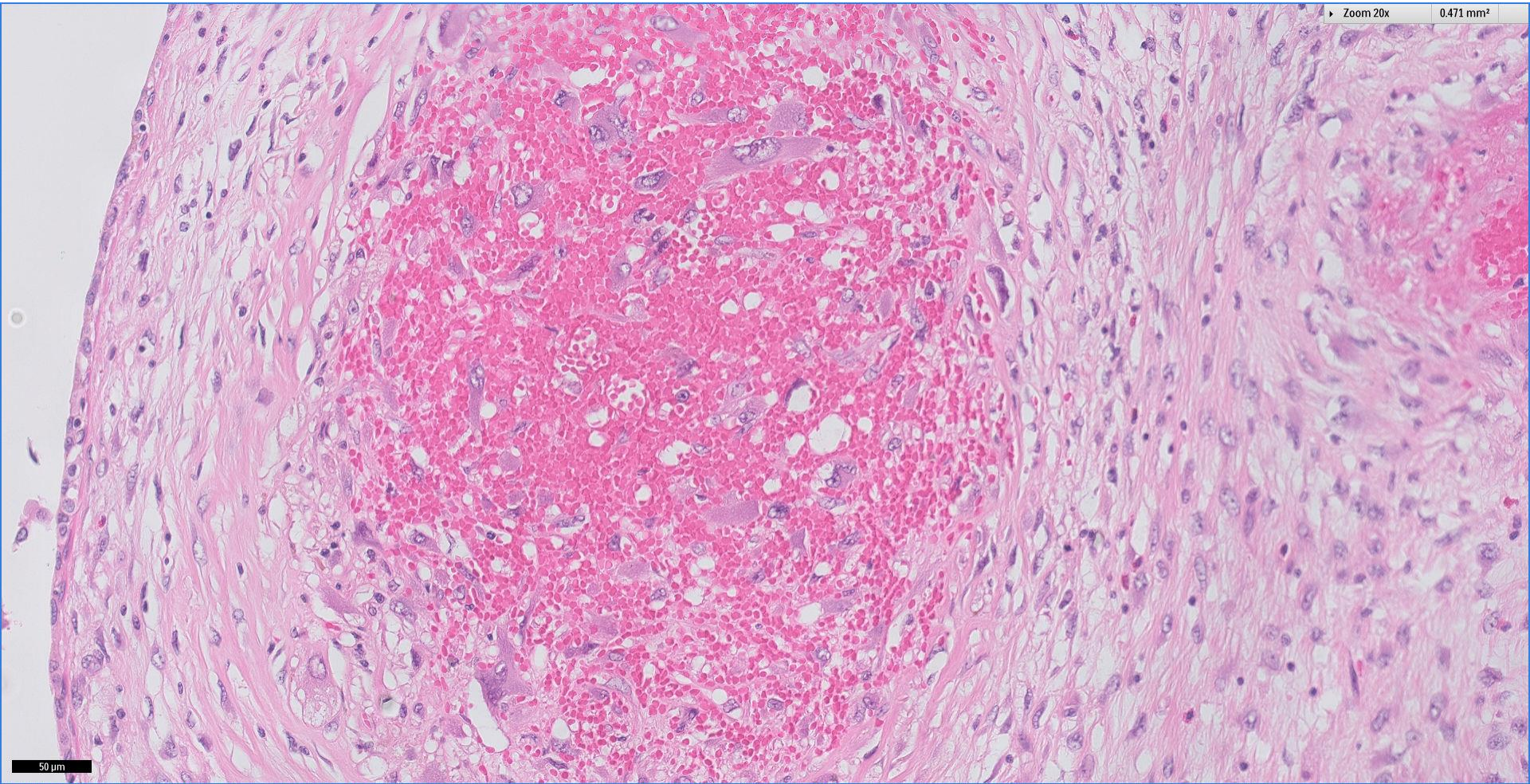
1 mm



200 μ m

Zoom 20x

0.471 mm²

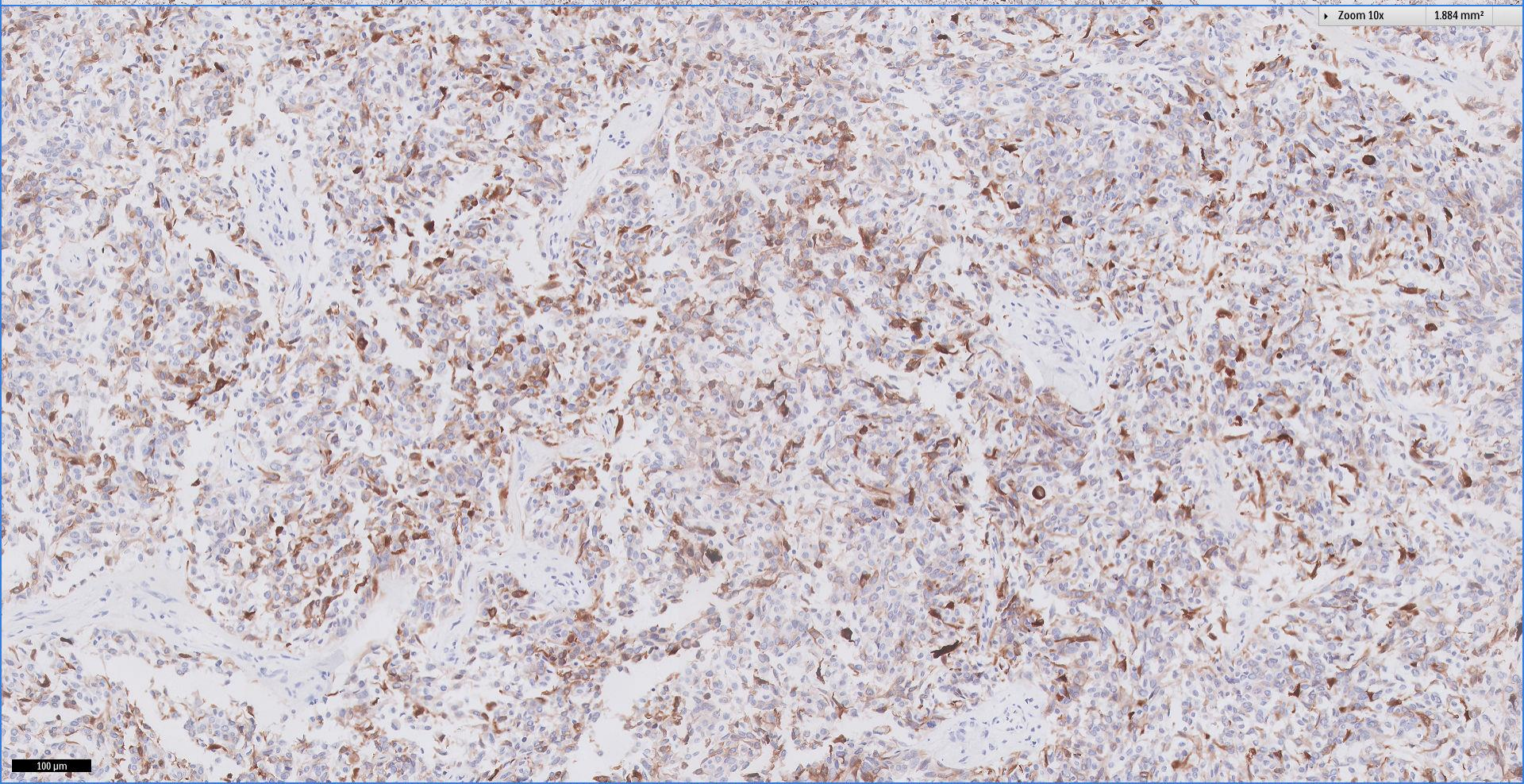


50 μm

CK5/6

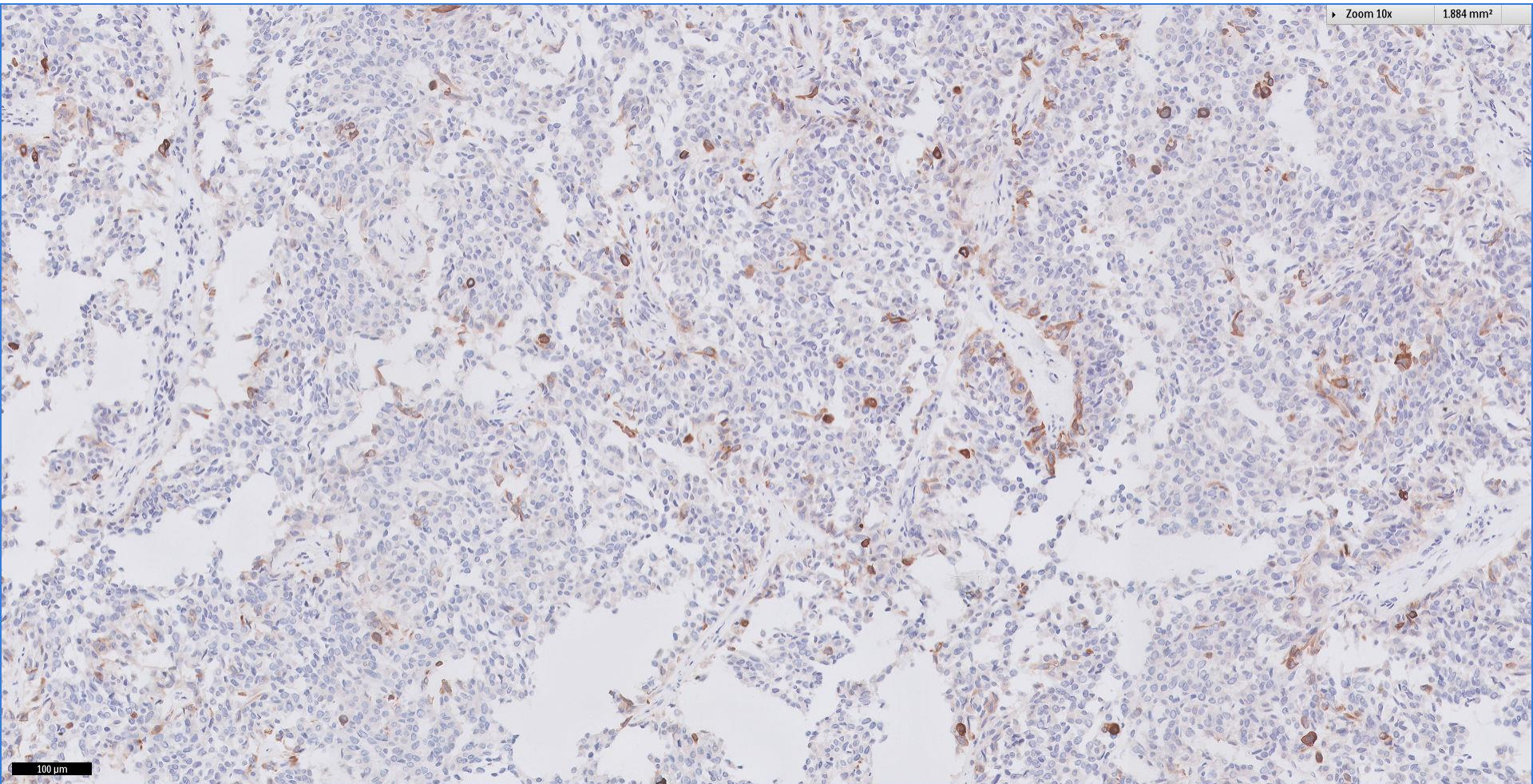
Zoom 2x 30.136 mm²

Zoom 10x 1.884 mm²

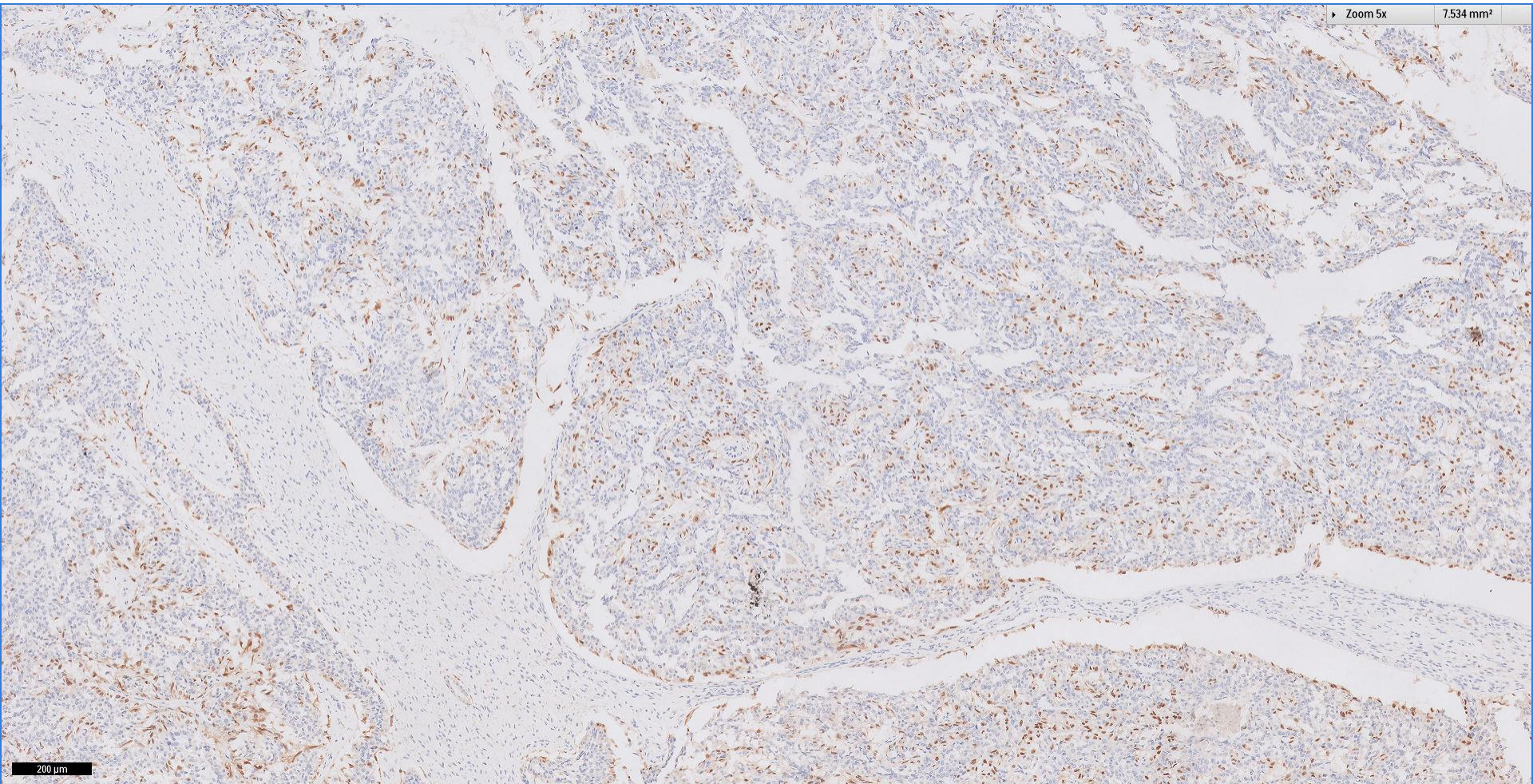


100 μm

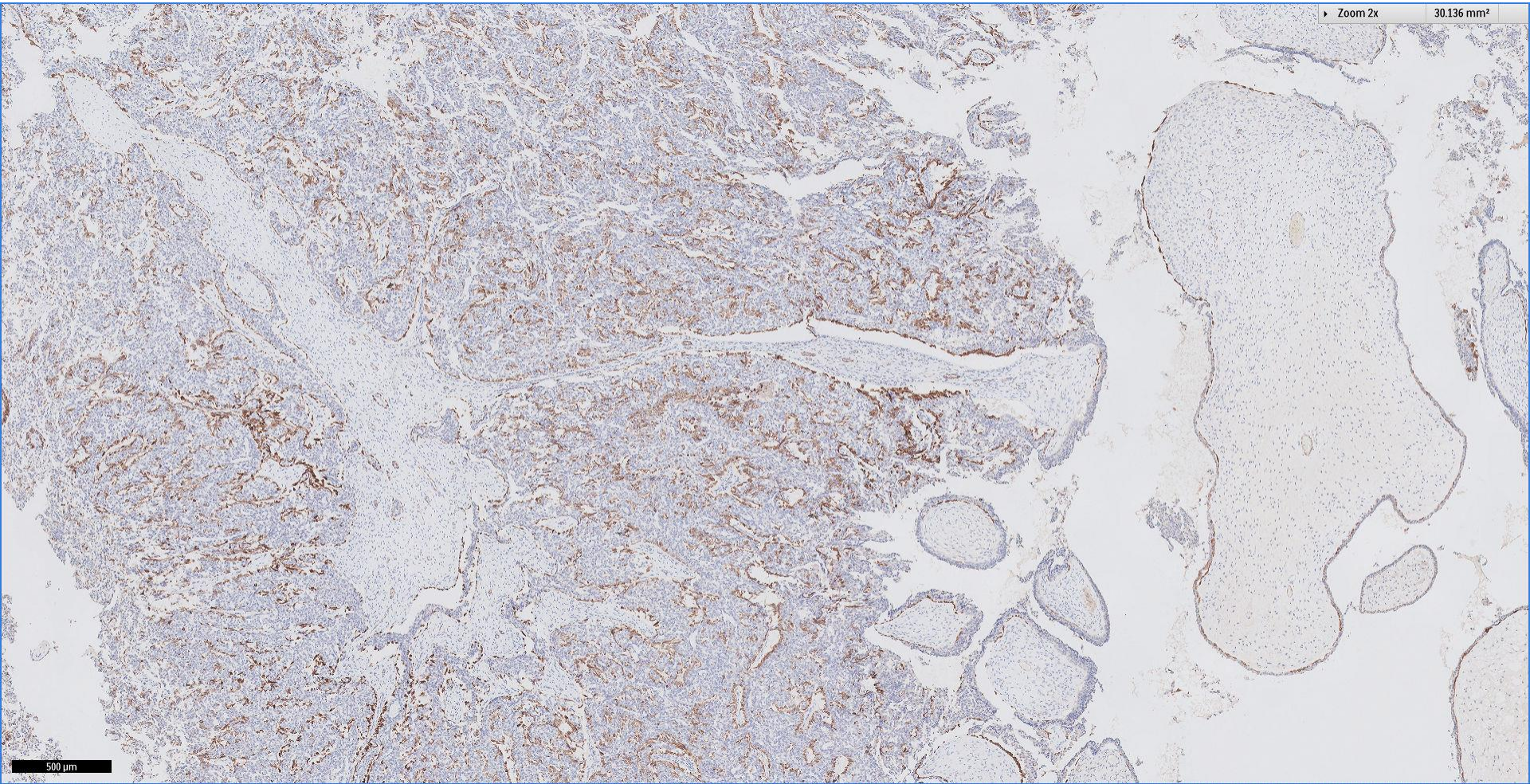
CK14



p63



SMMS

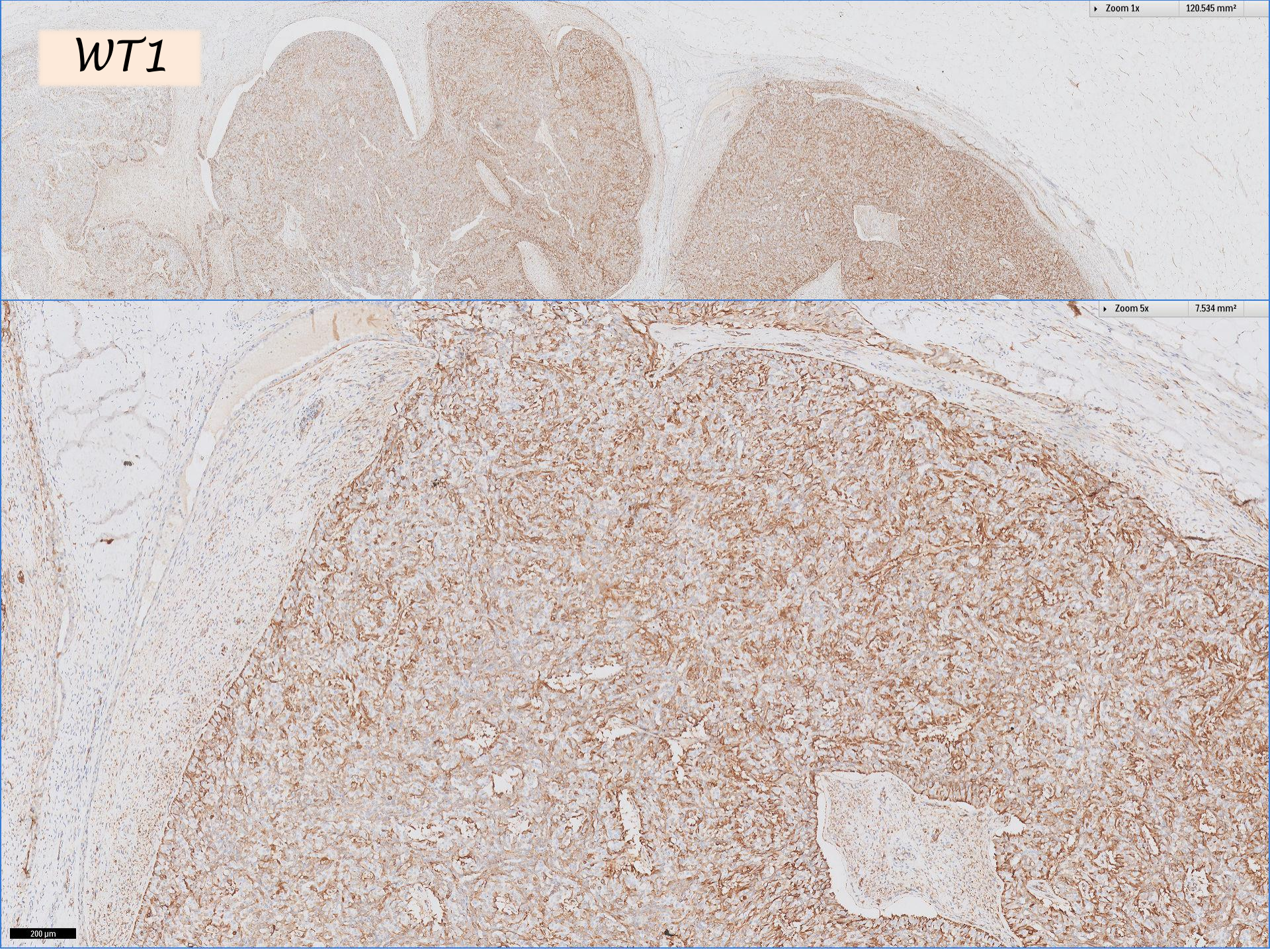


WT1

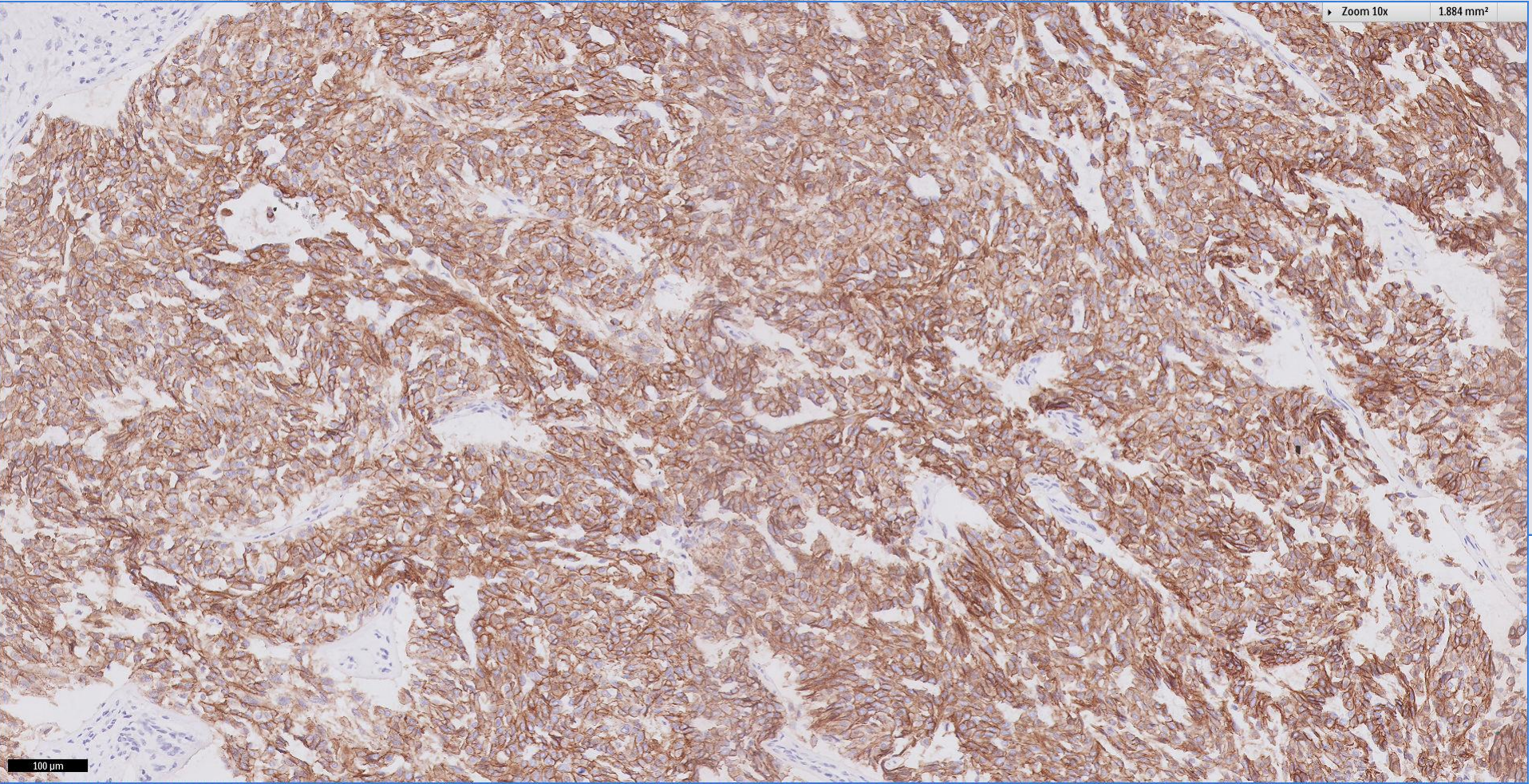
Zoom 1x 120.545 mm²

Zoom 5x 7.534 mm²

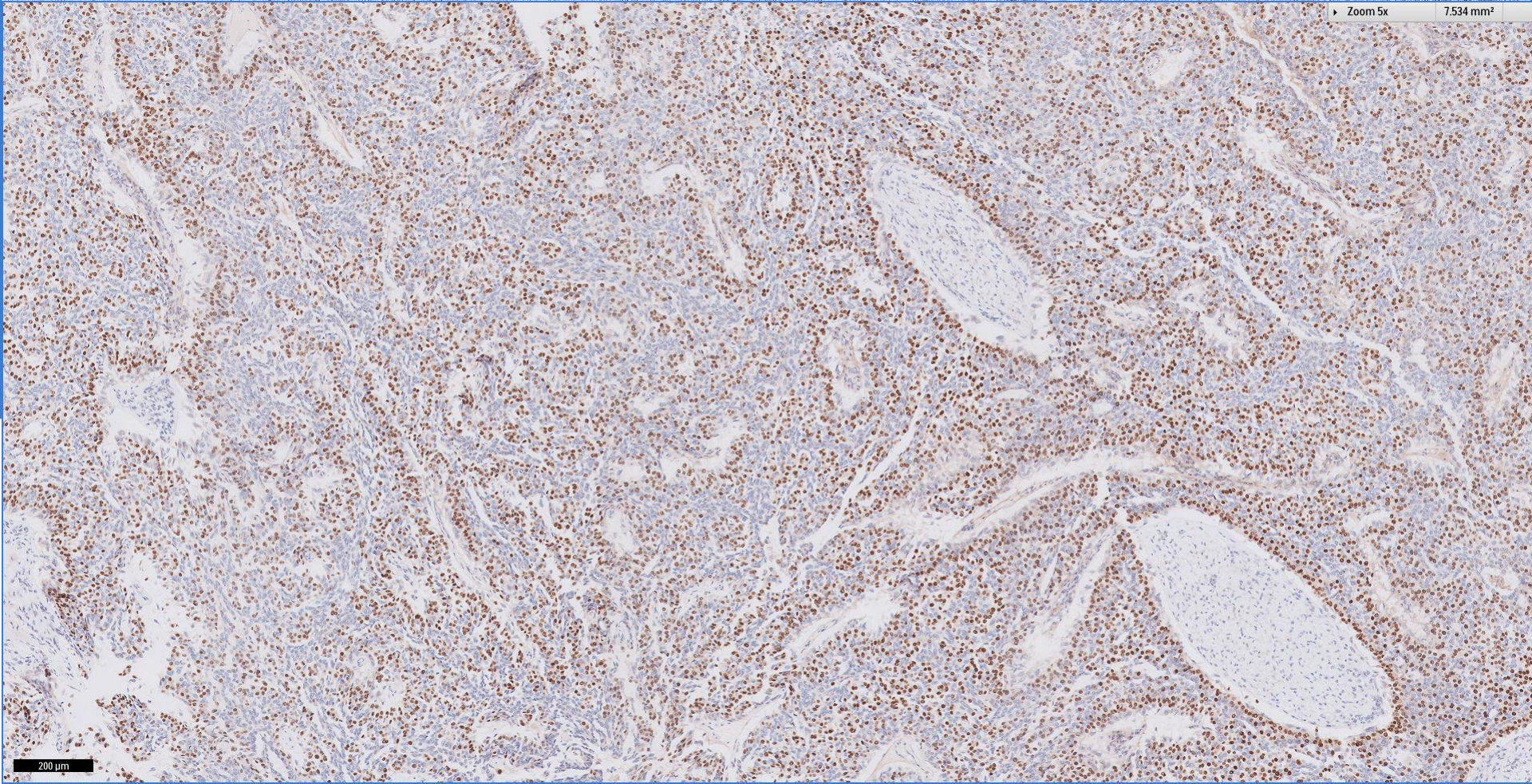
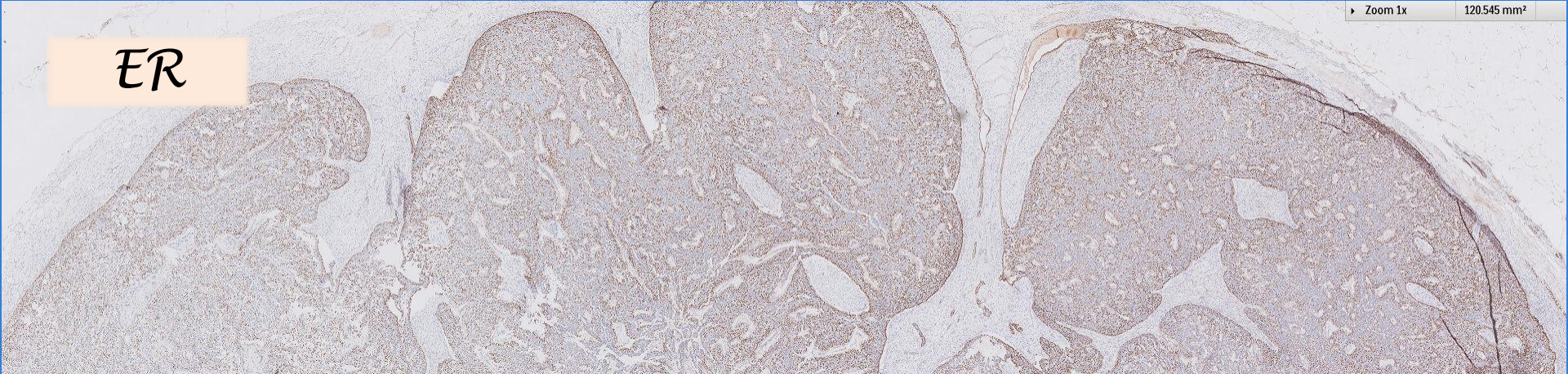
200 μm



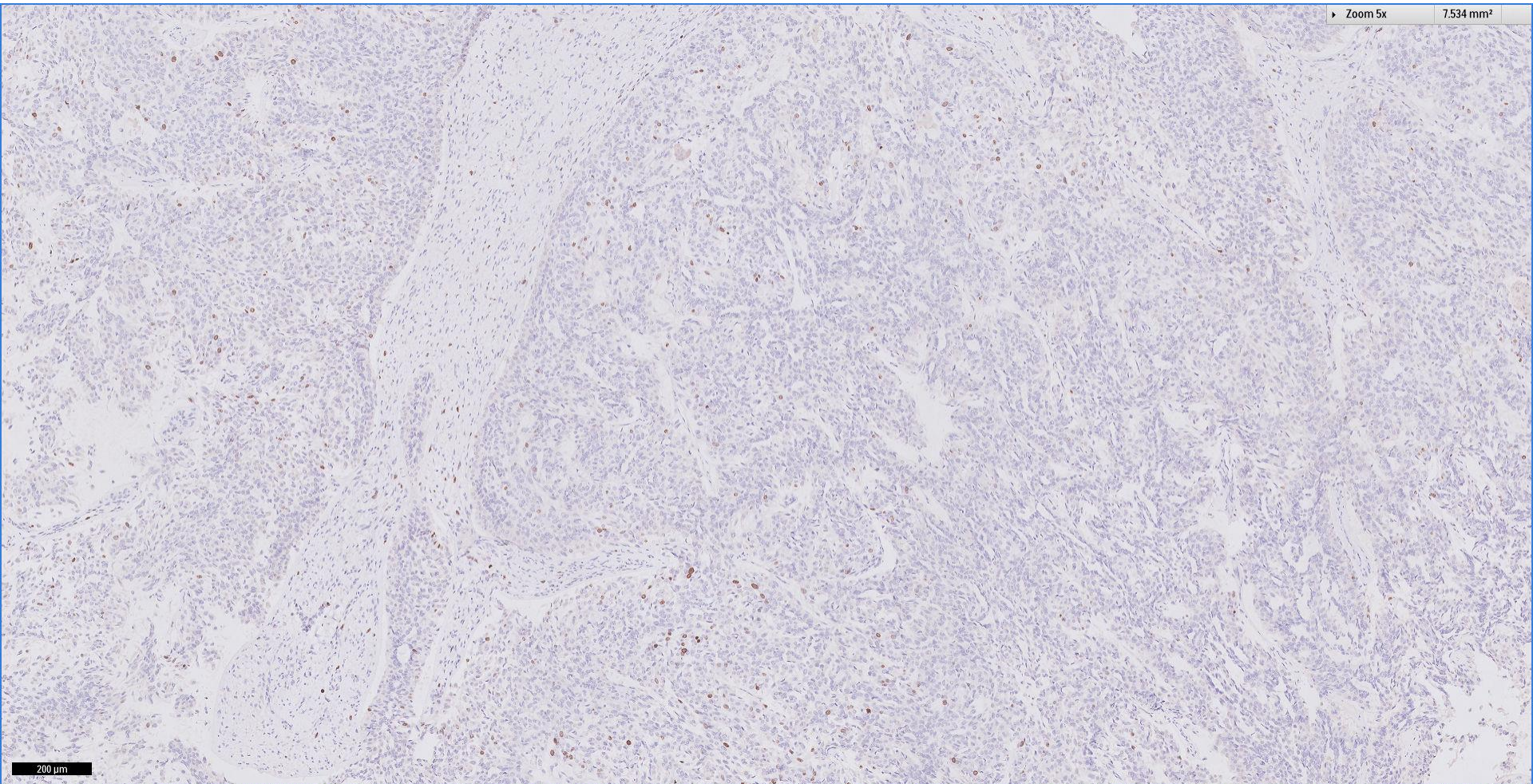
E-cadherin



ER

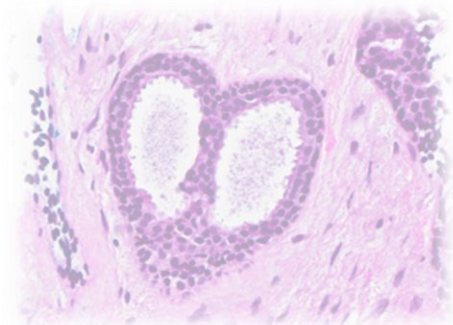
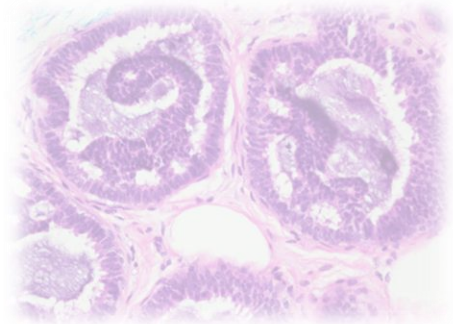
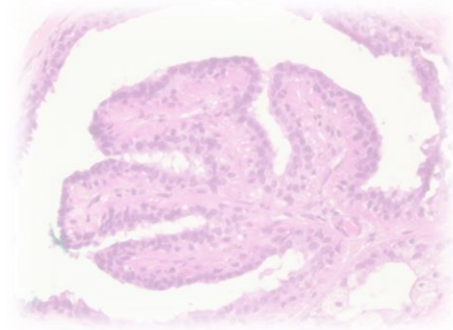


Ki67



Diagnosis, case 25

- Breast tumour, excision biopsy:
Benign phyllodes tumour with solid-papillary proliferation incorporating an adenomyoepitheliomatous component.



Thank You