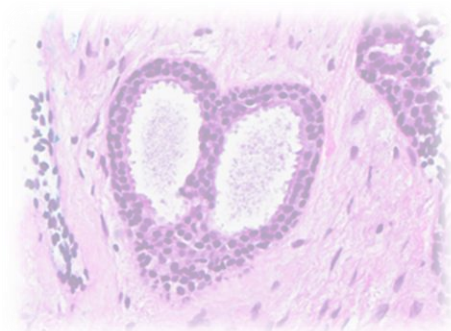
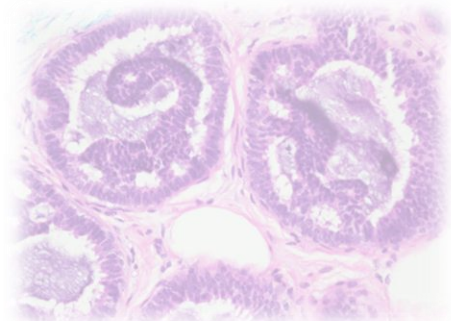
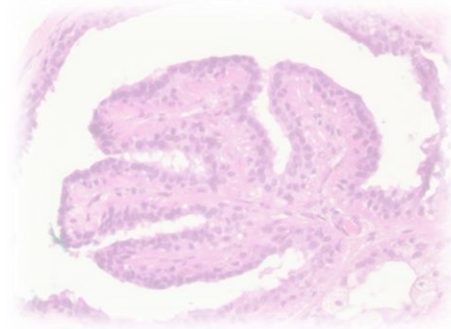
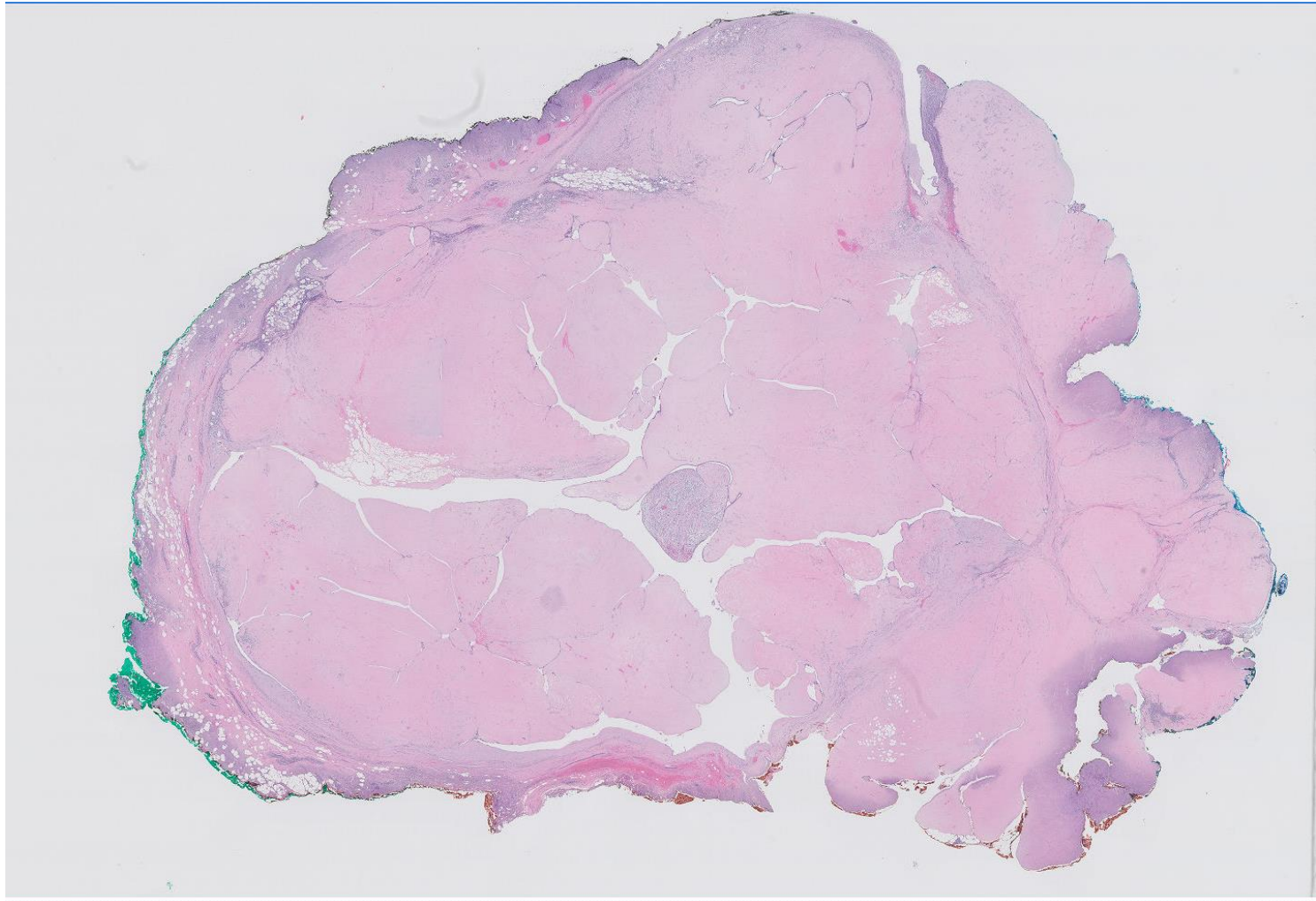


## Case 12

45 year old Indian female.  
Left breast 2:00 lesion, excision  
biopsy.

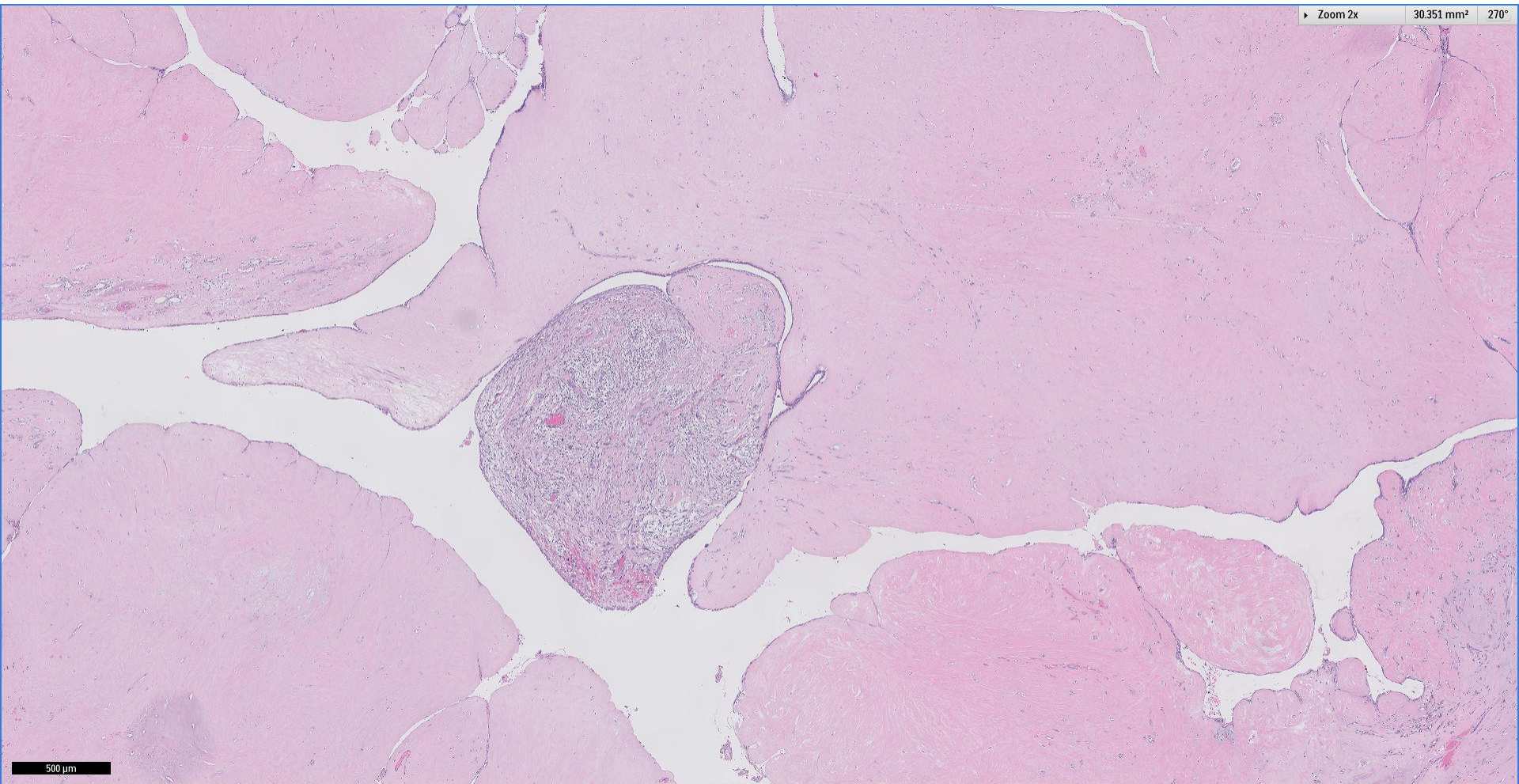




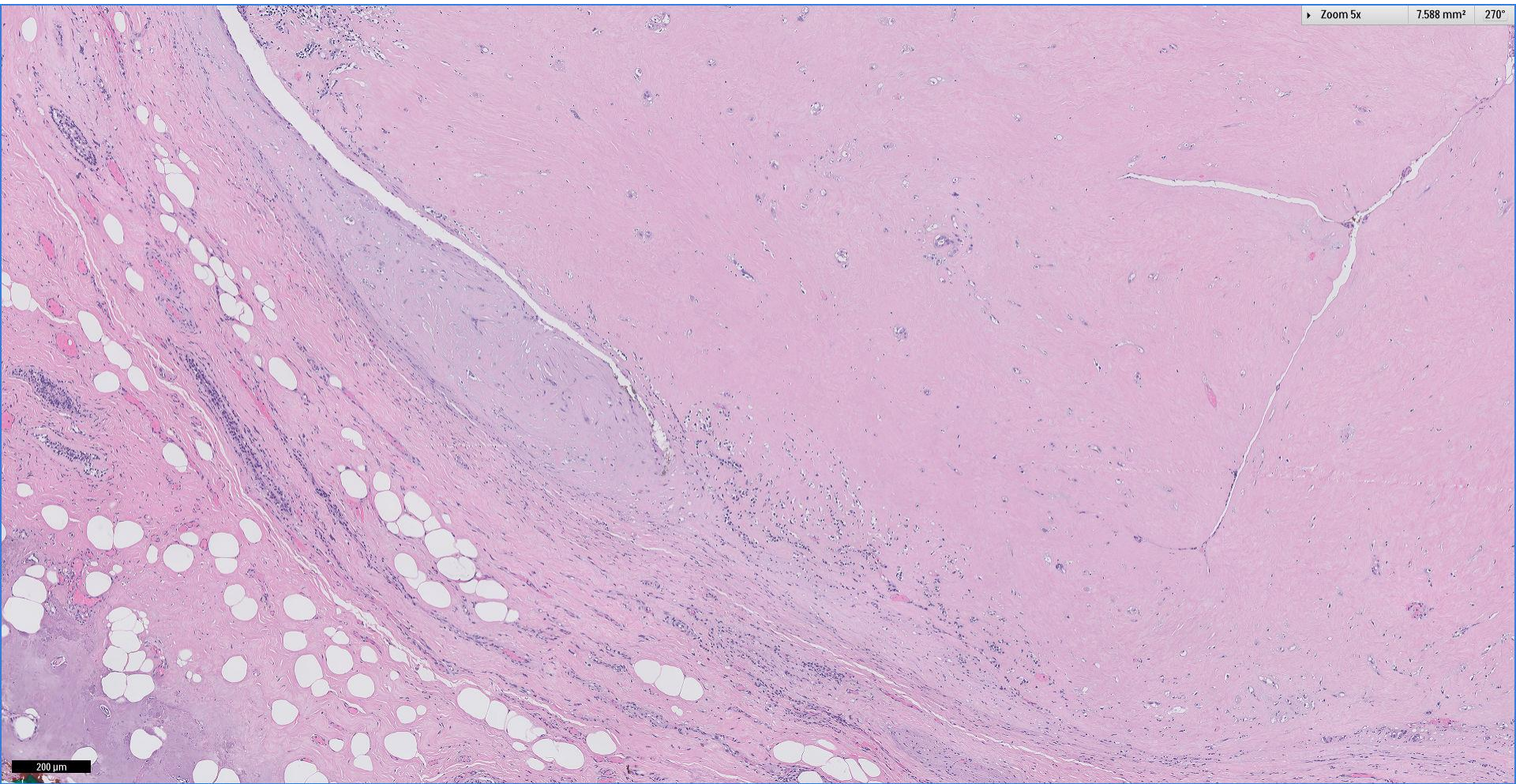
Division of Pathology  
Singapore General Hospital







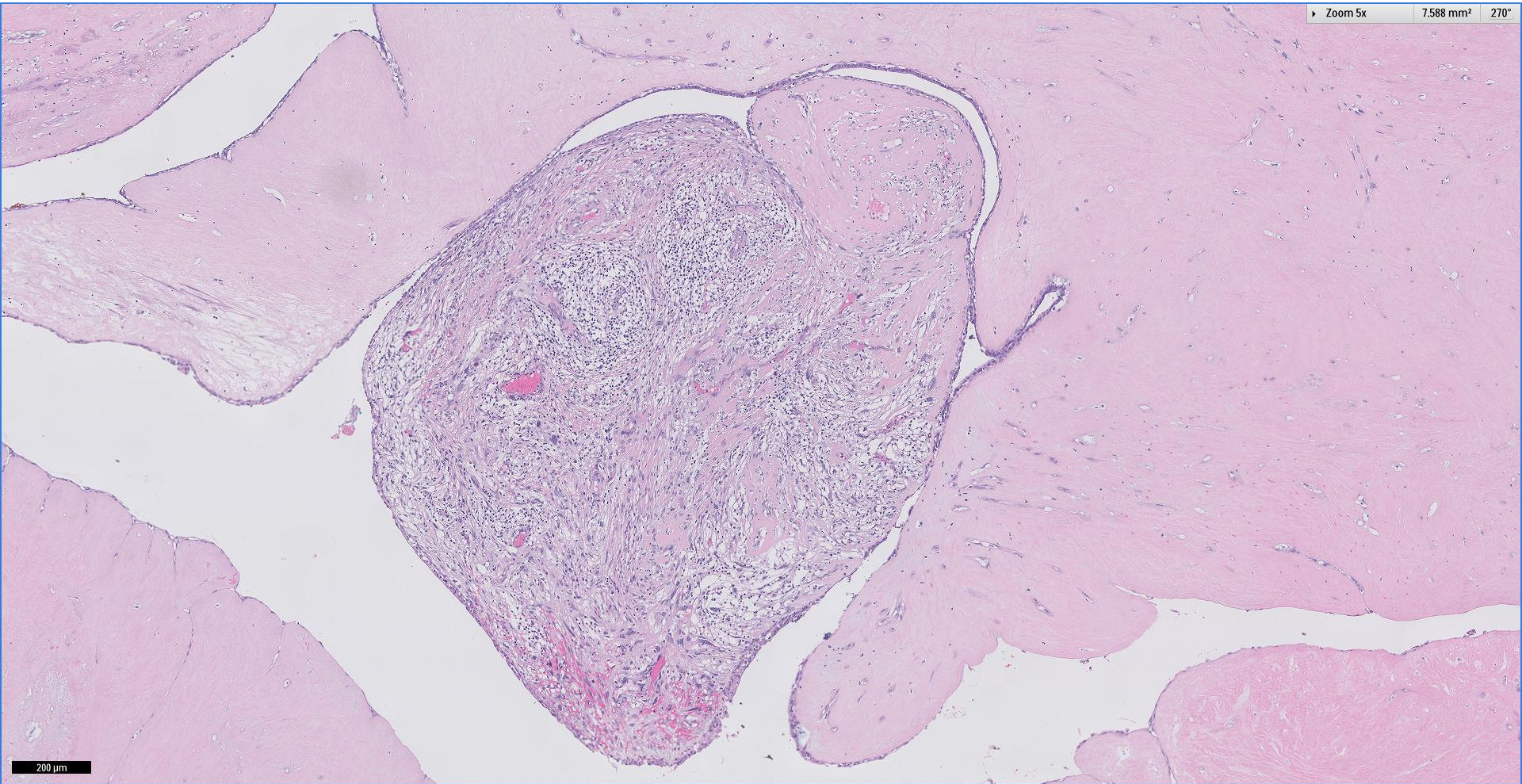




Division of Pathology  
Singapore General Hospital



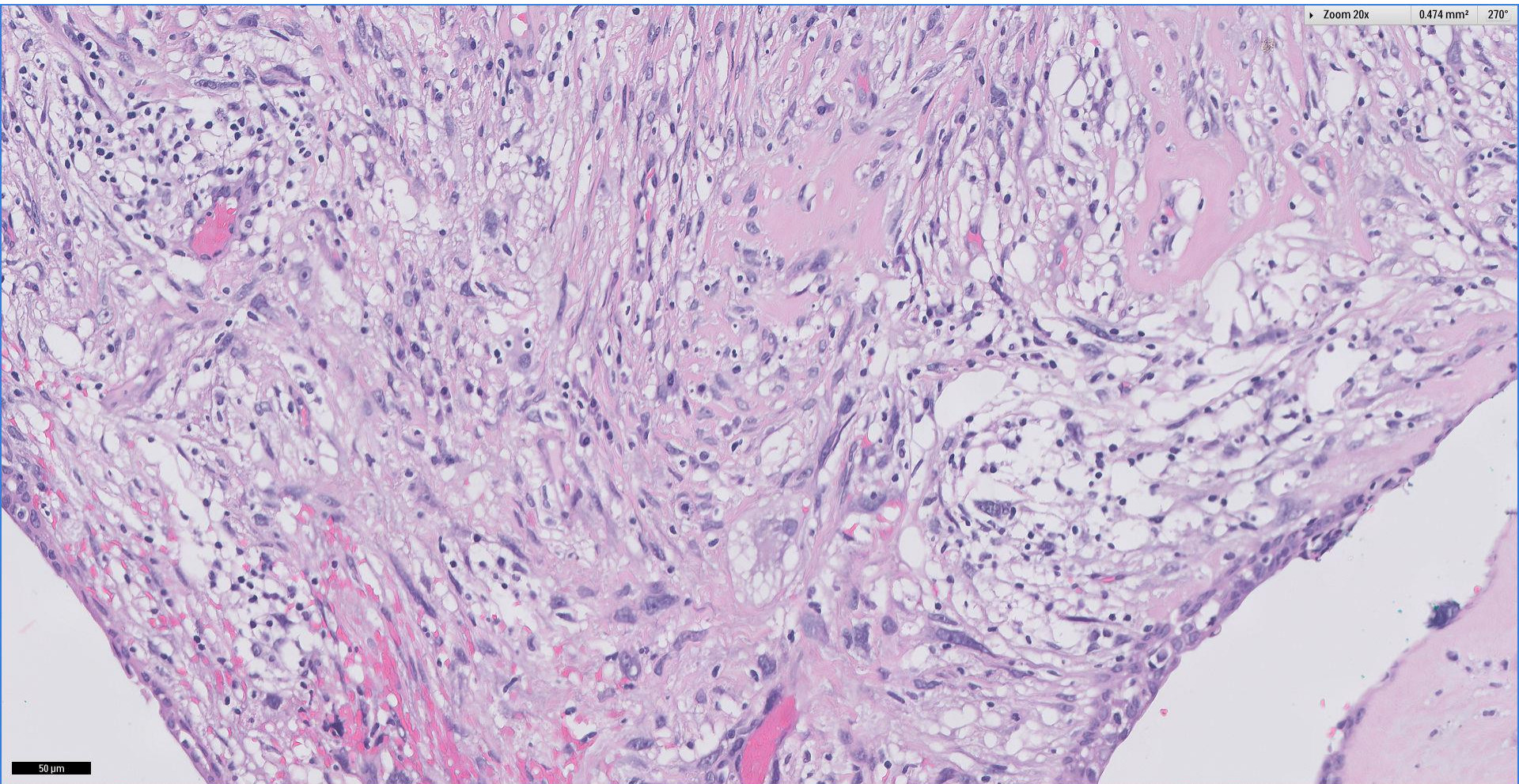




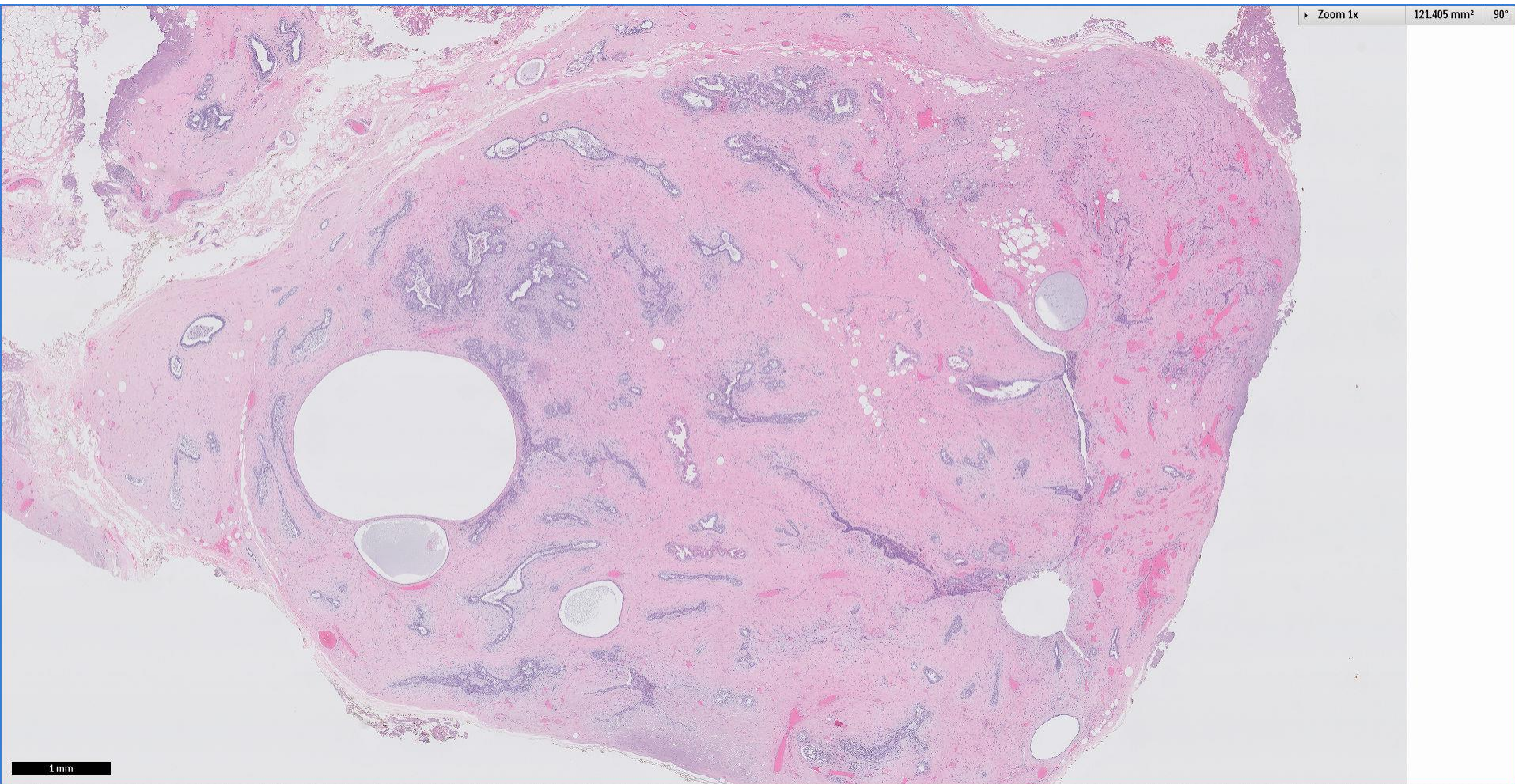
Division of Pathology  
Singapore General Hospital







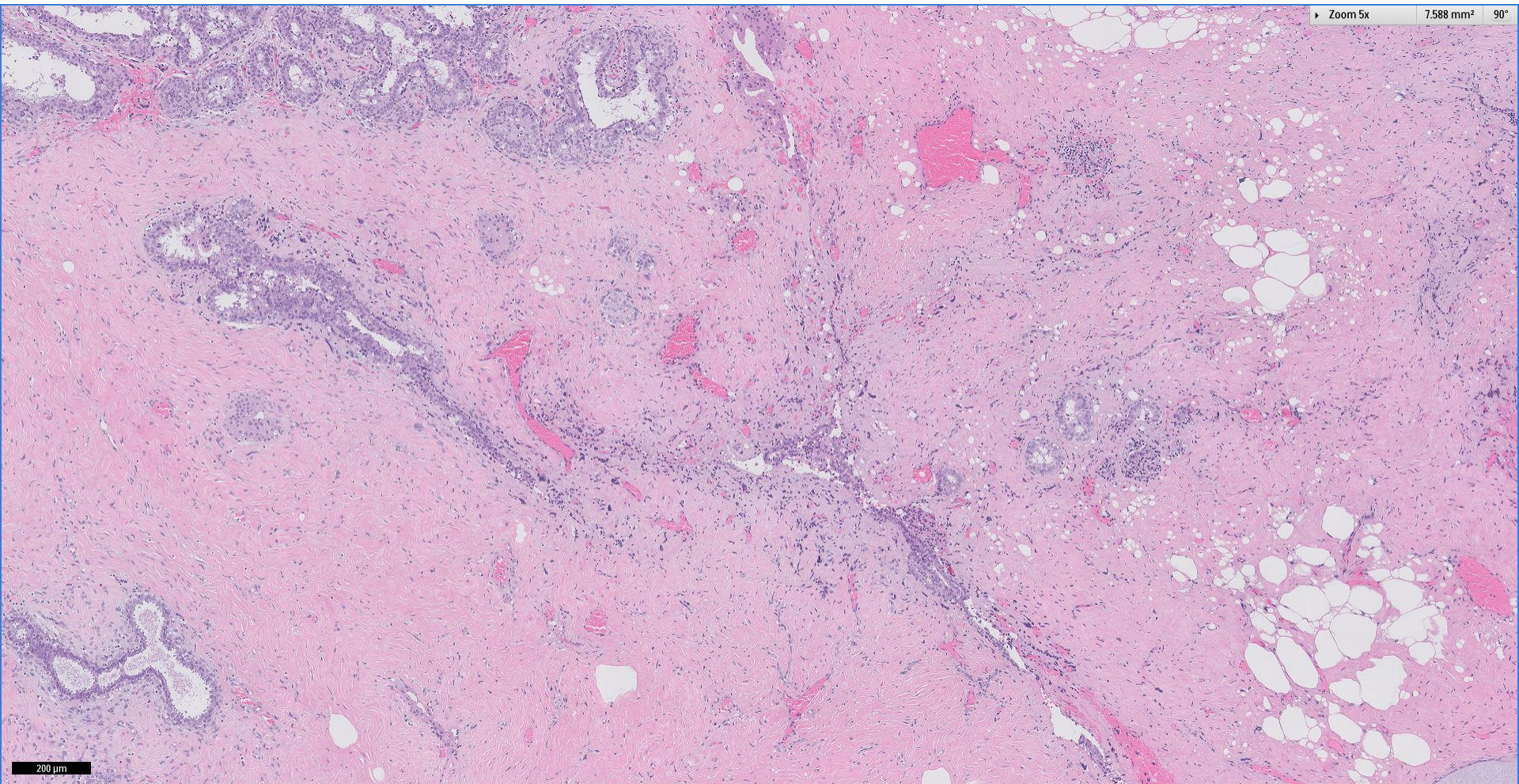




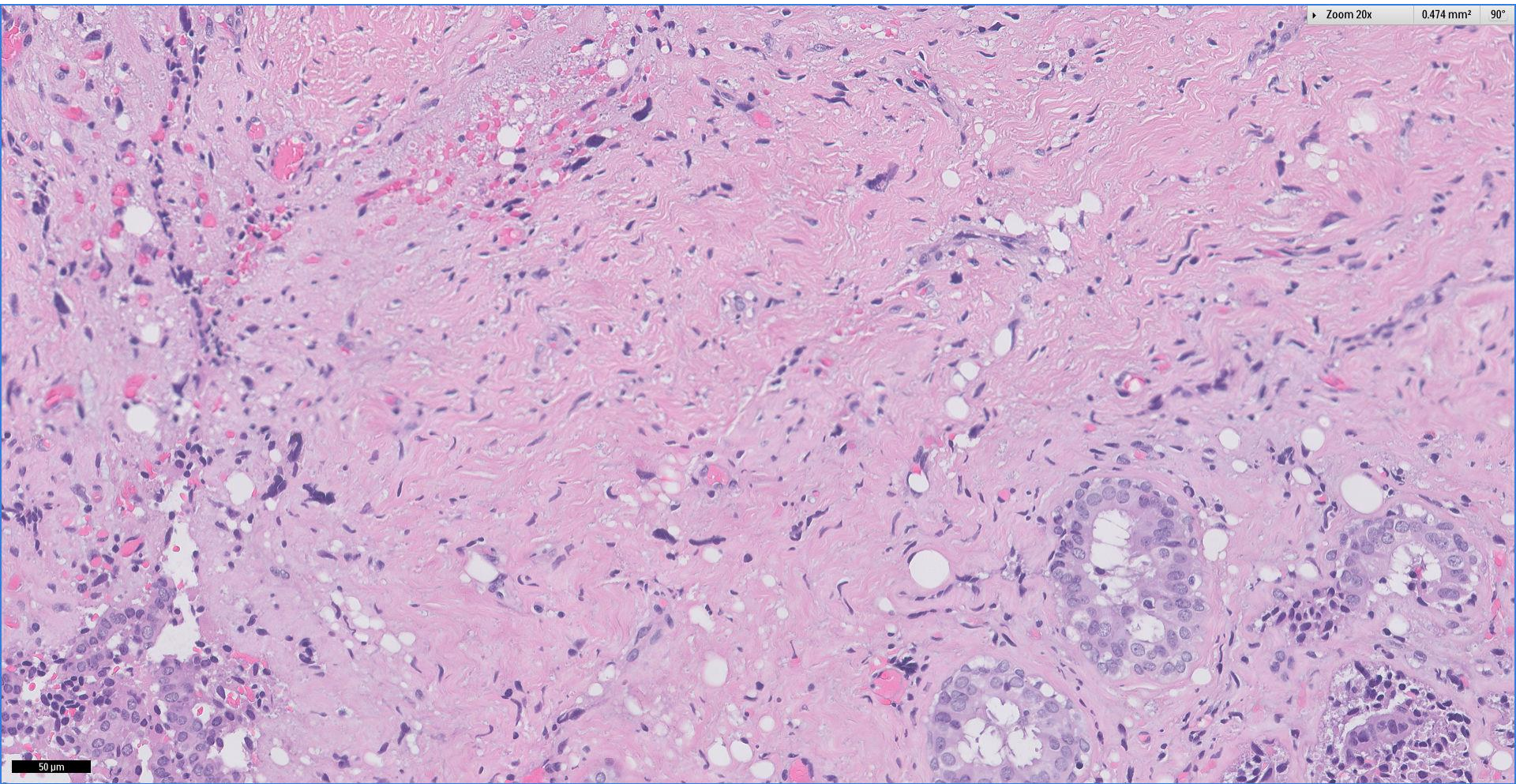
Division of Pathology  
Singapore General Hospital







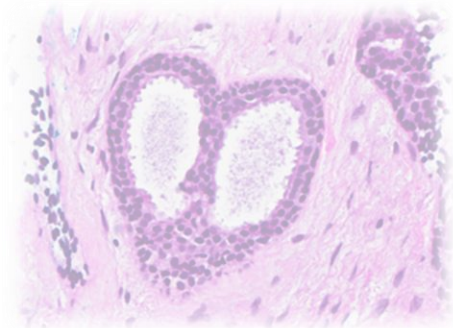
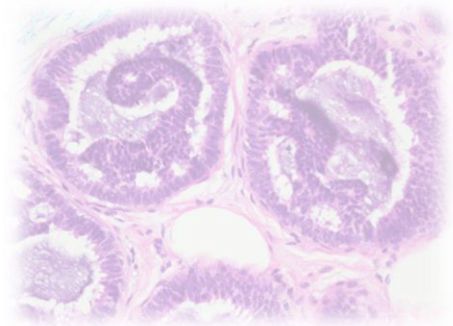
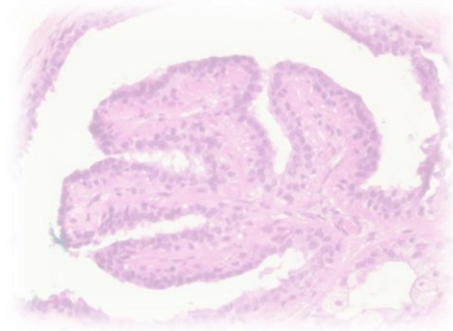




Division of Pathology  
Singapore General Hospital







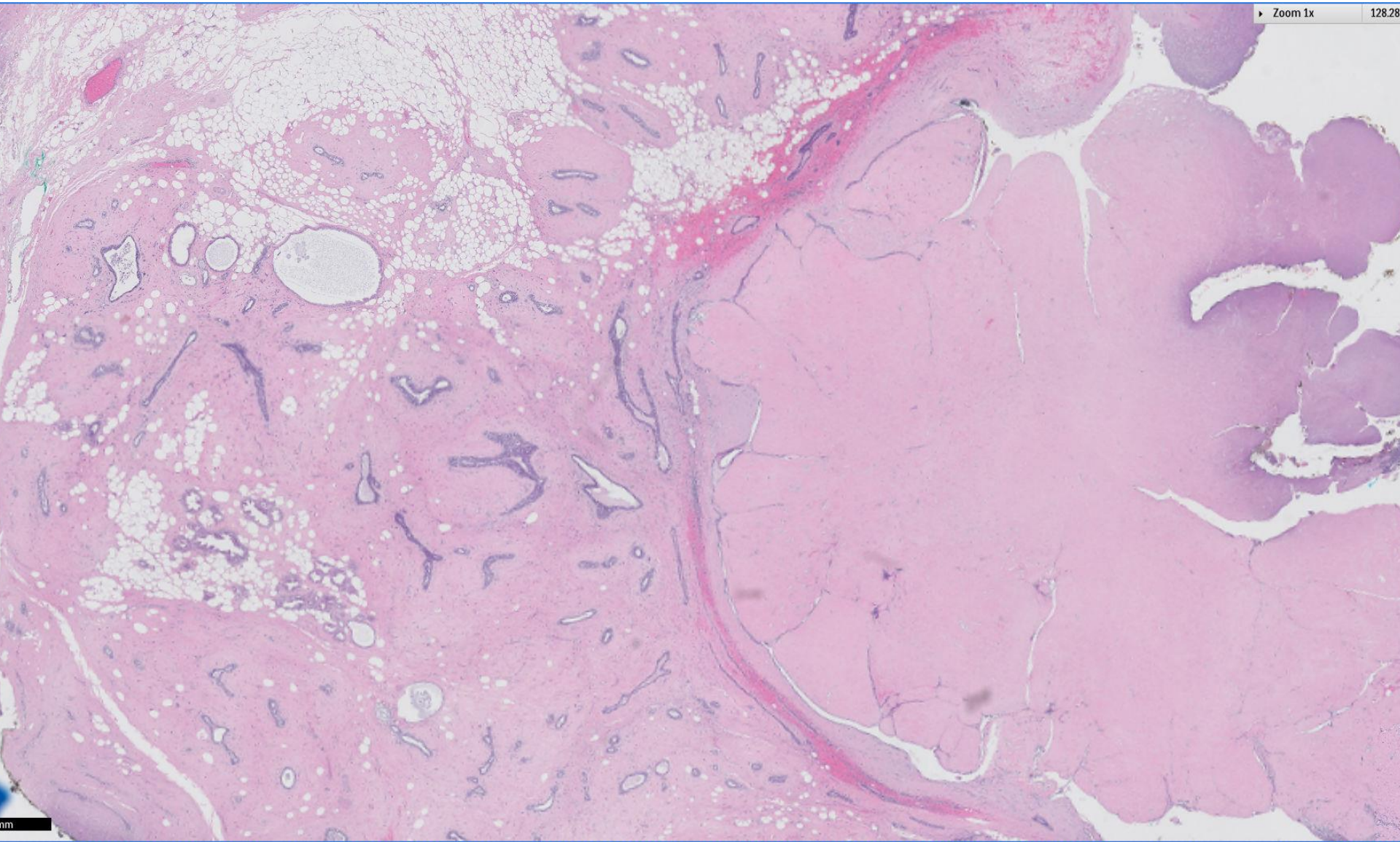
# *Additional pictures*



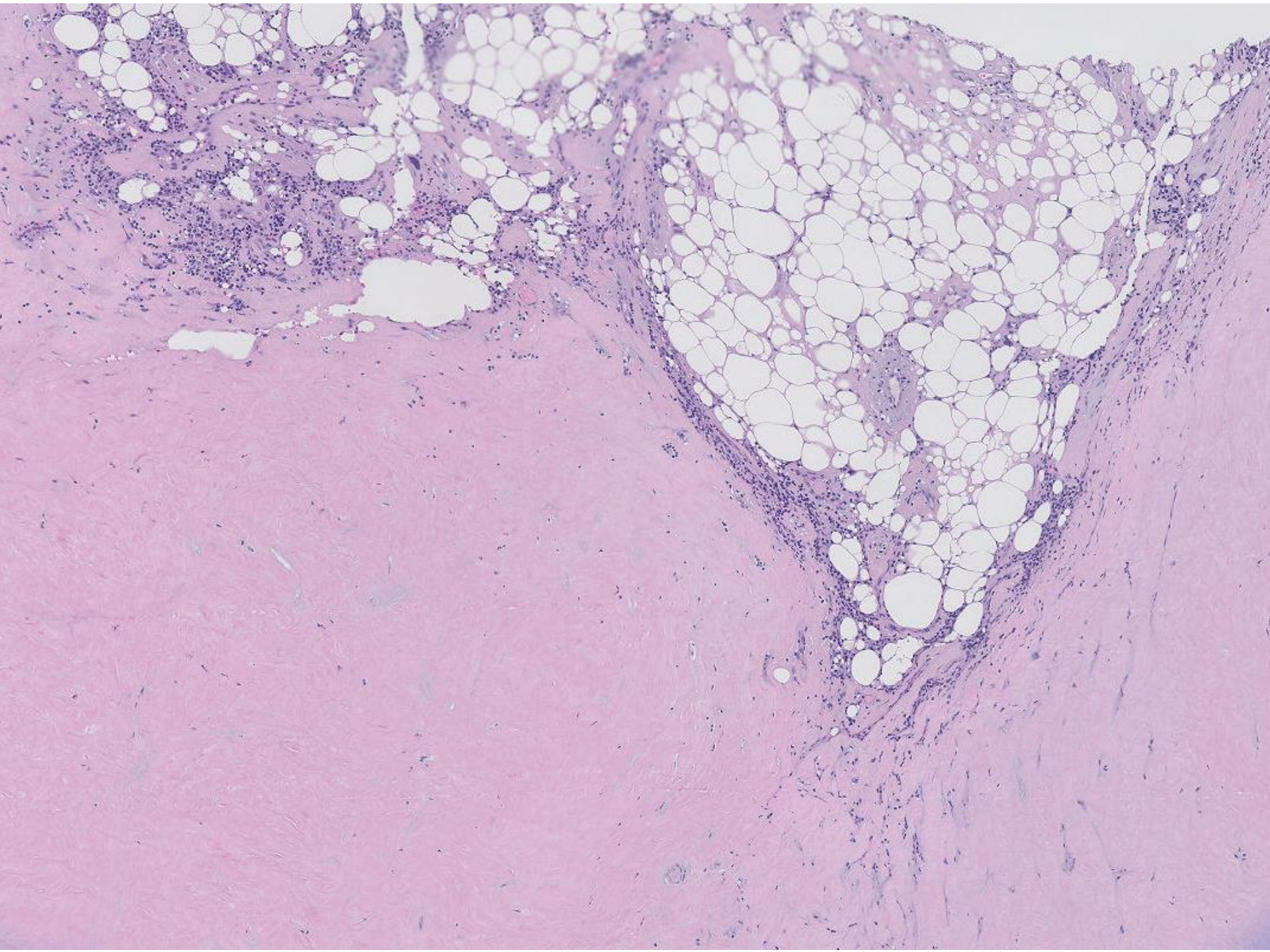
# Radiology

- Ultrasound ~
  - Left breast shows a suspicious 3.5 x 2.9 x 2.1cm mass at 2 o'clock, 8cm from nipple.
  - Irregular with heterogeneous echogenicity and internal vascularity.
  - No significant axillary lymphadenopathy.





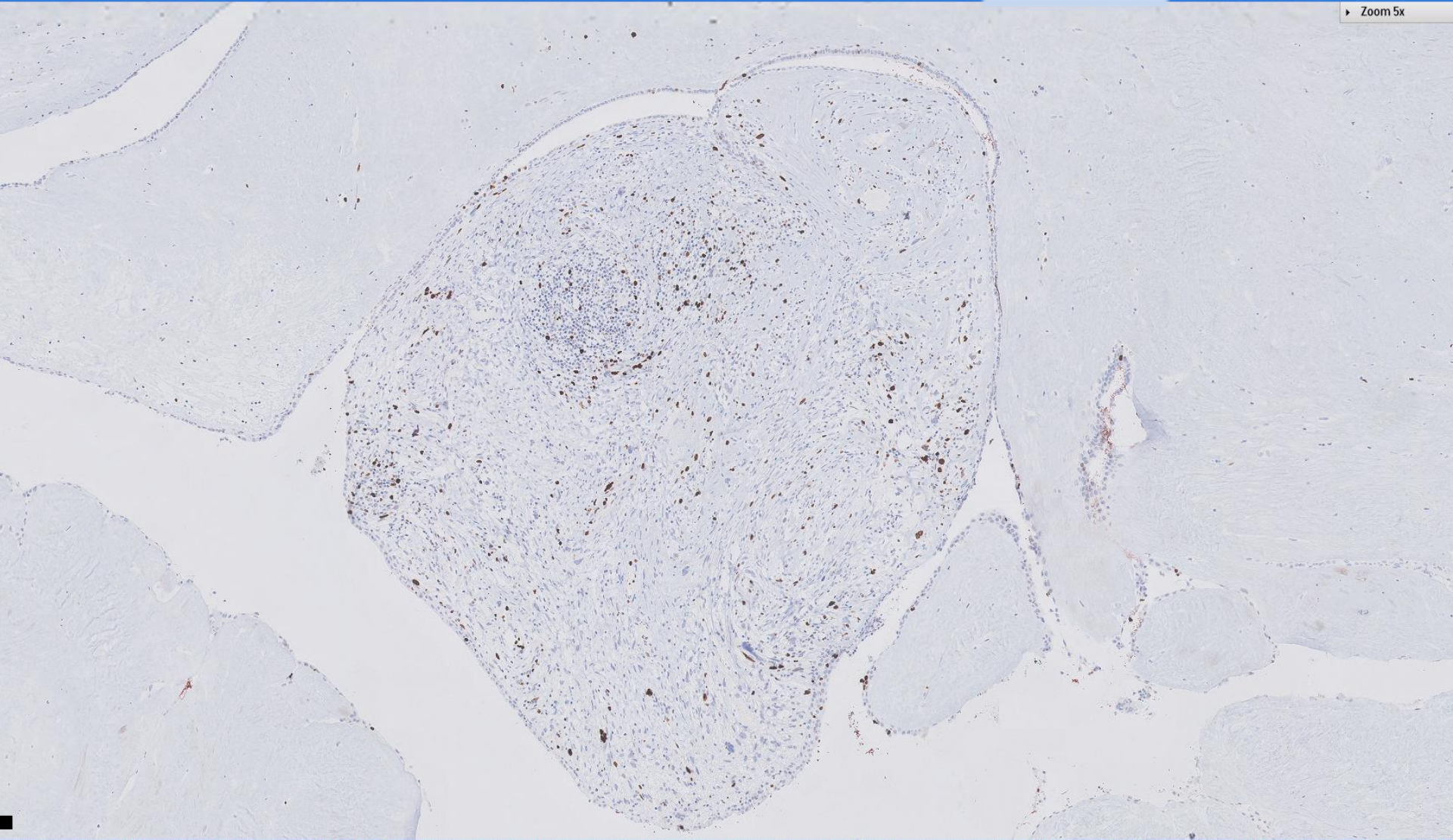






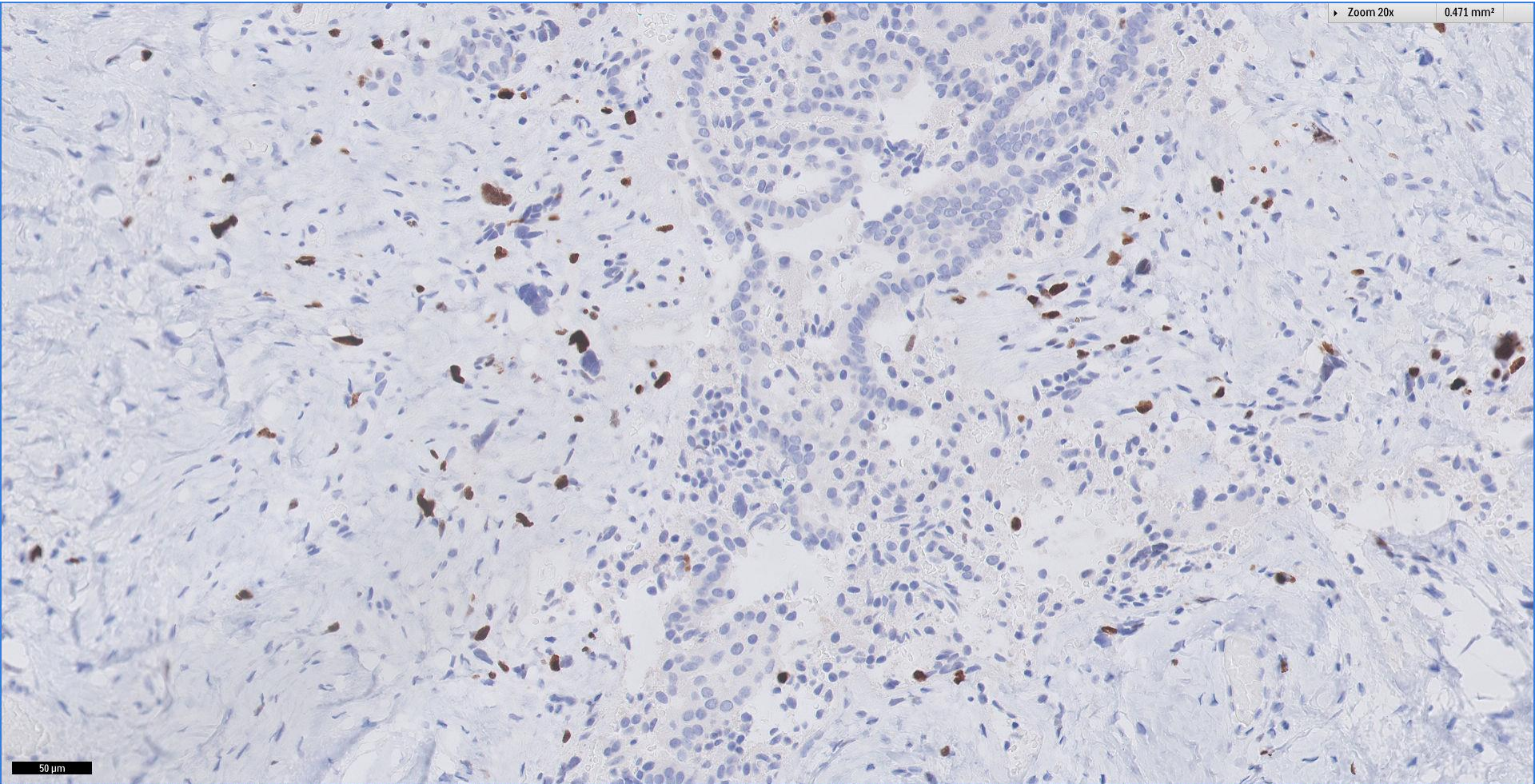
# Ki67

▶ Zoom 5x



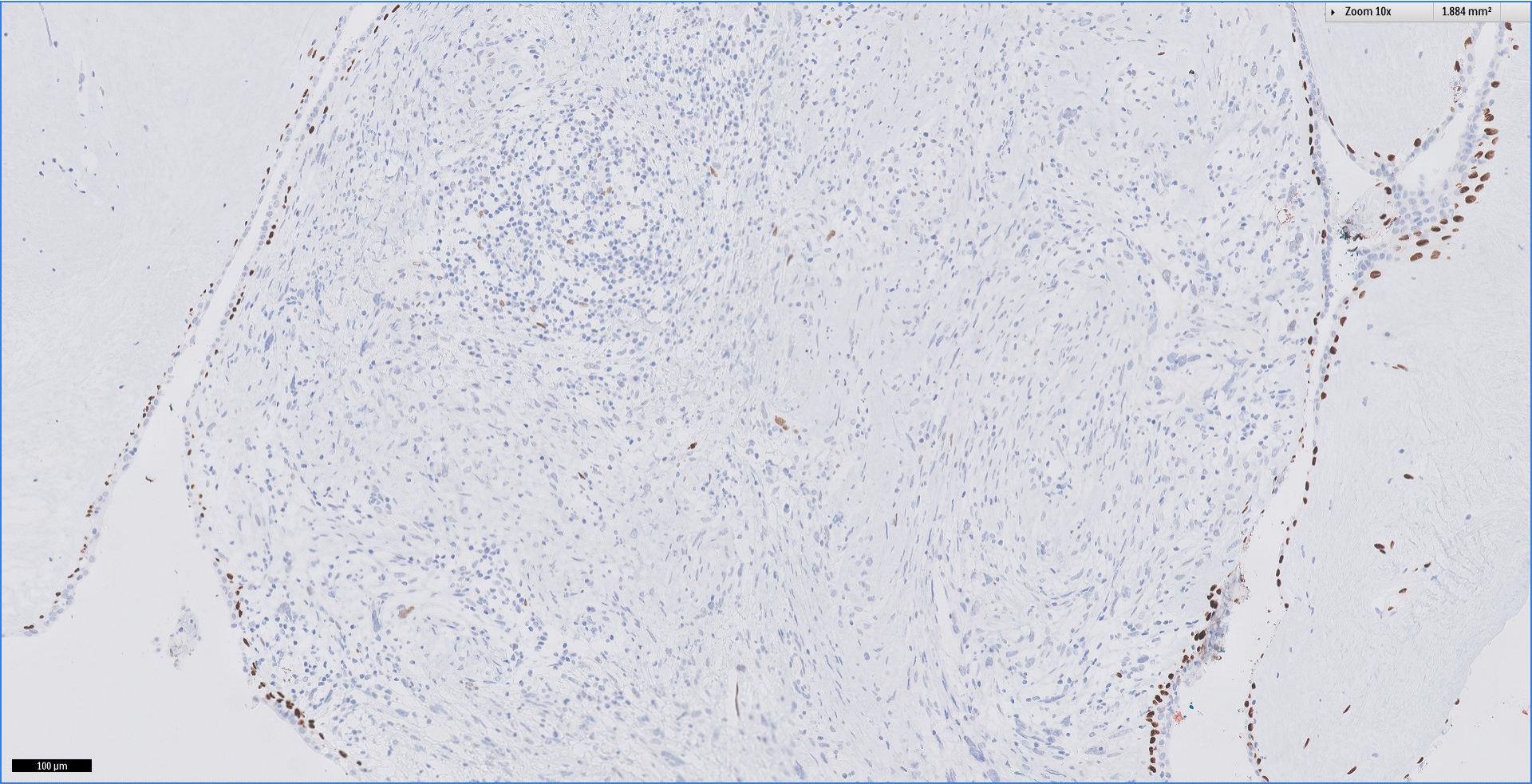


# Ki67





p63





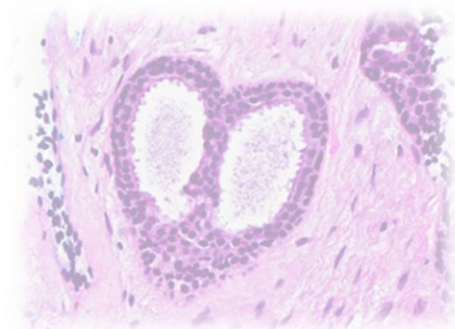
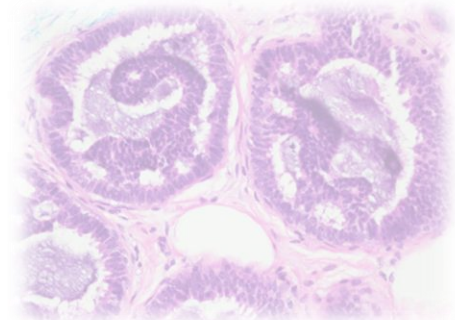
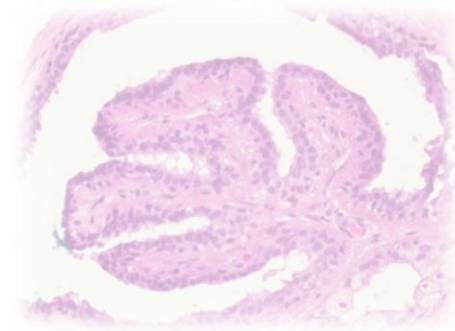
# Diagnosis, case 12

- Left breast 2:00 lesion, excision biopsy:

Phyllodes tumour with extensive infarction, favour borderline grade.

*Borderline grade favoured ~*

- *stromal hypercellularity, atypia, irregular margins*





*Thank You*