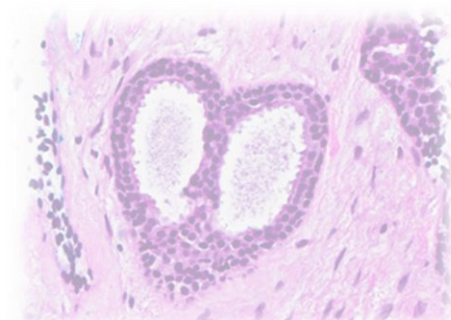
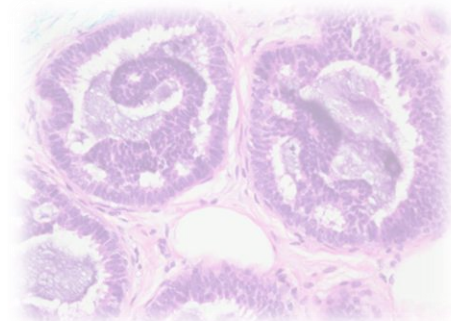
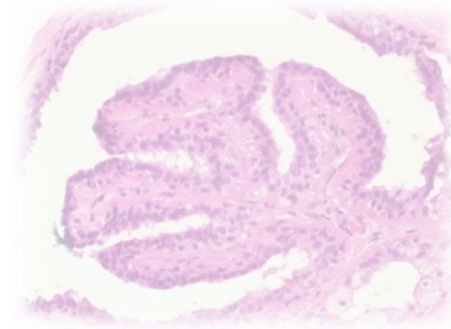
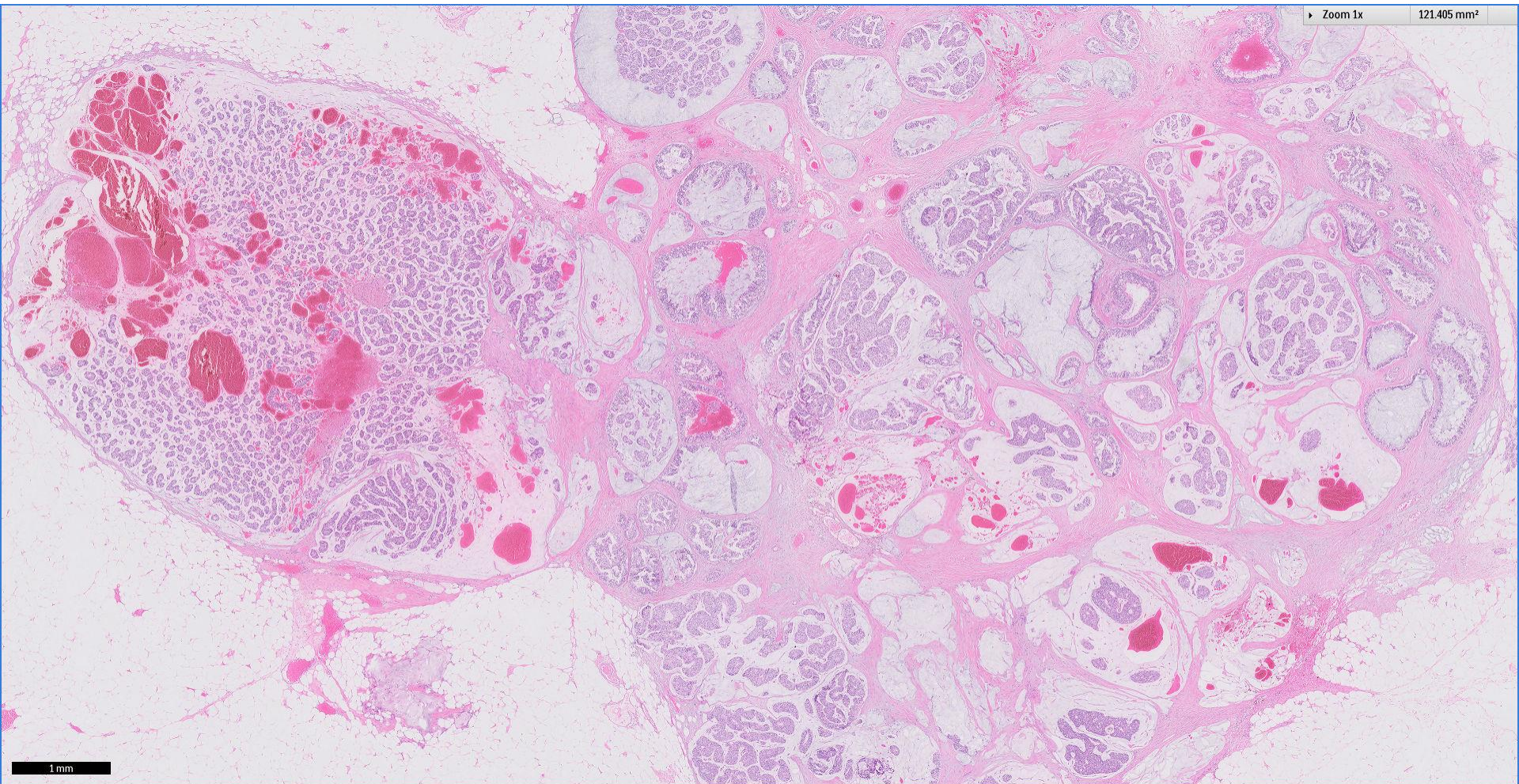


Case 4

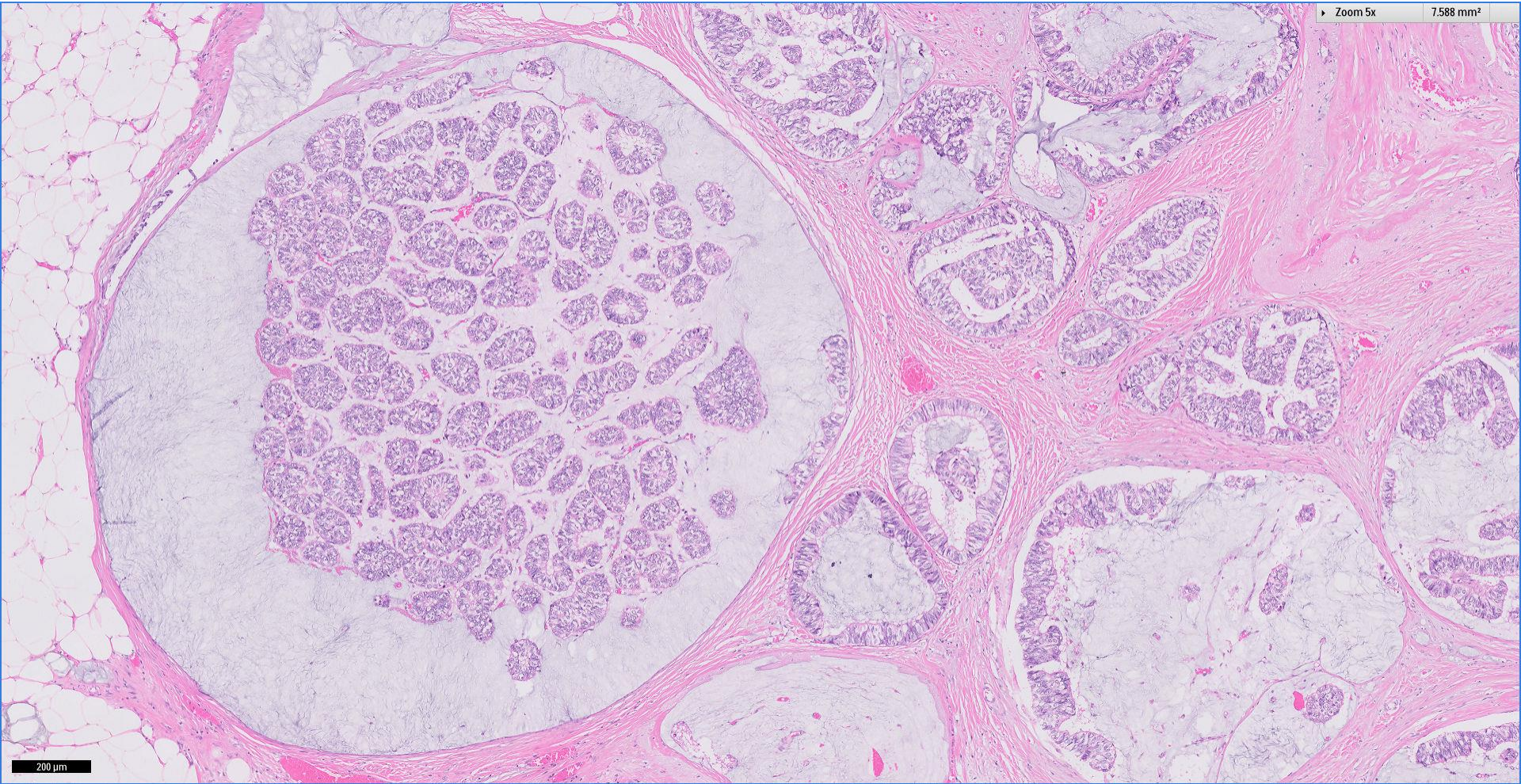
45 year old Chinese female.

Right breast skin sparing mastectomy.





Zoom 5x 7.588 mm²

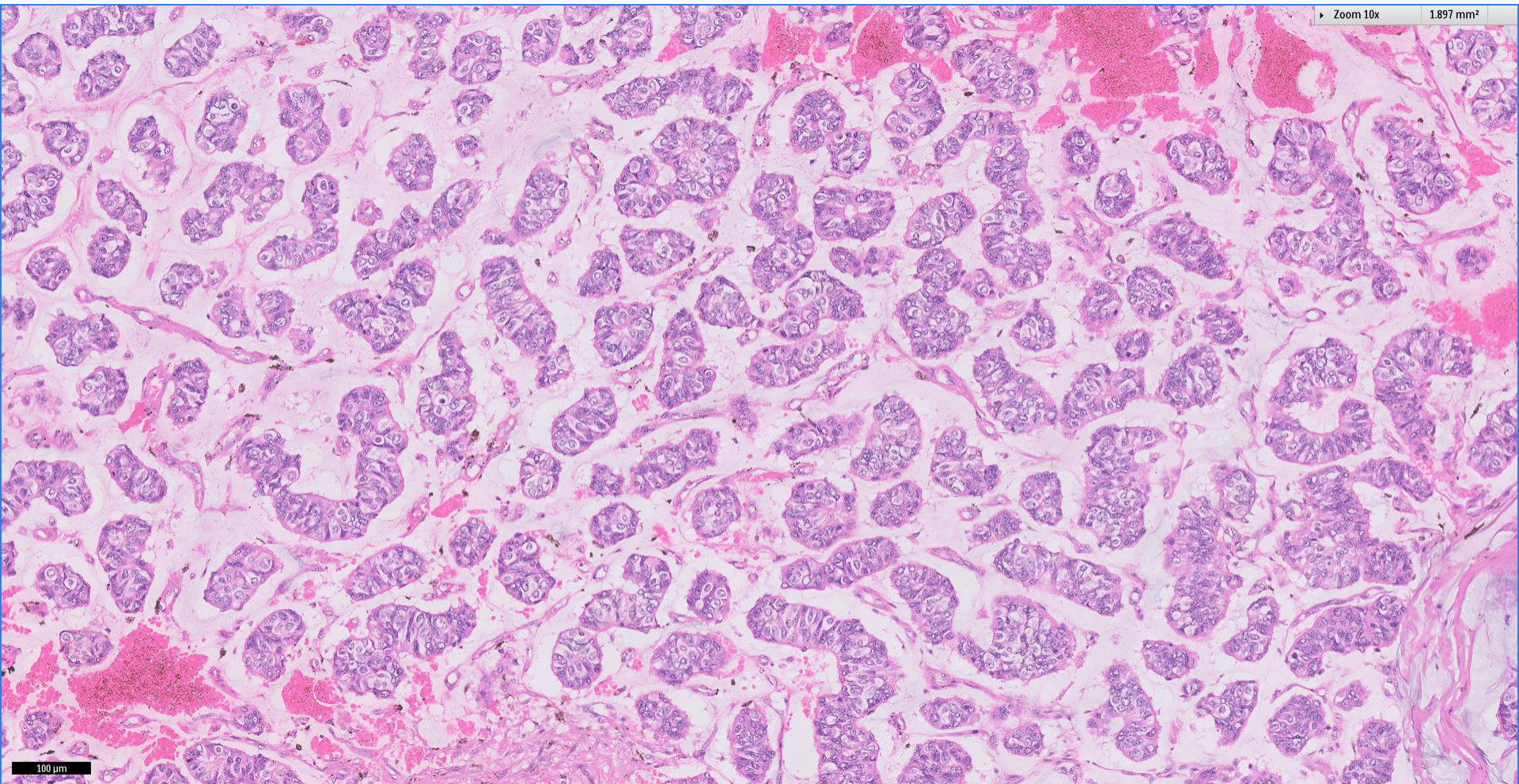


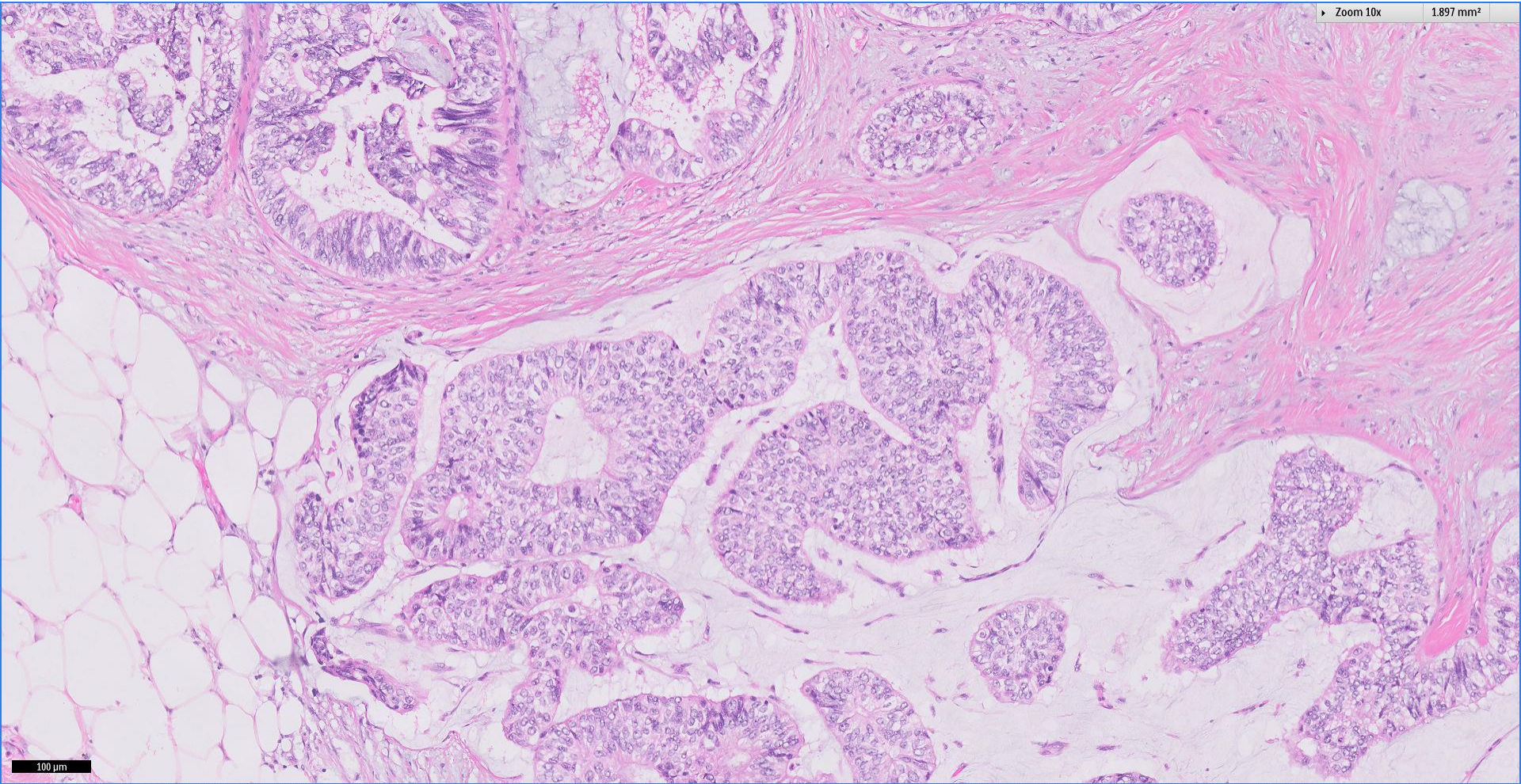
200 μ m

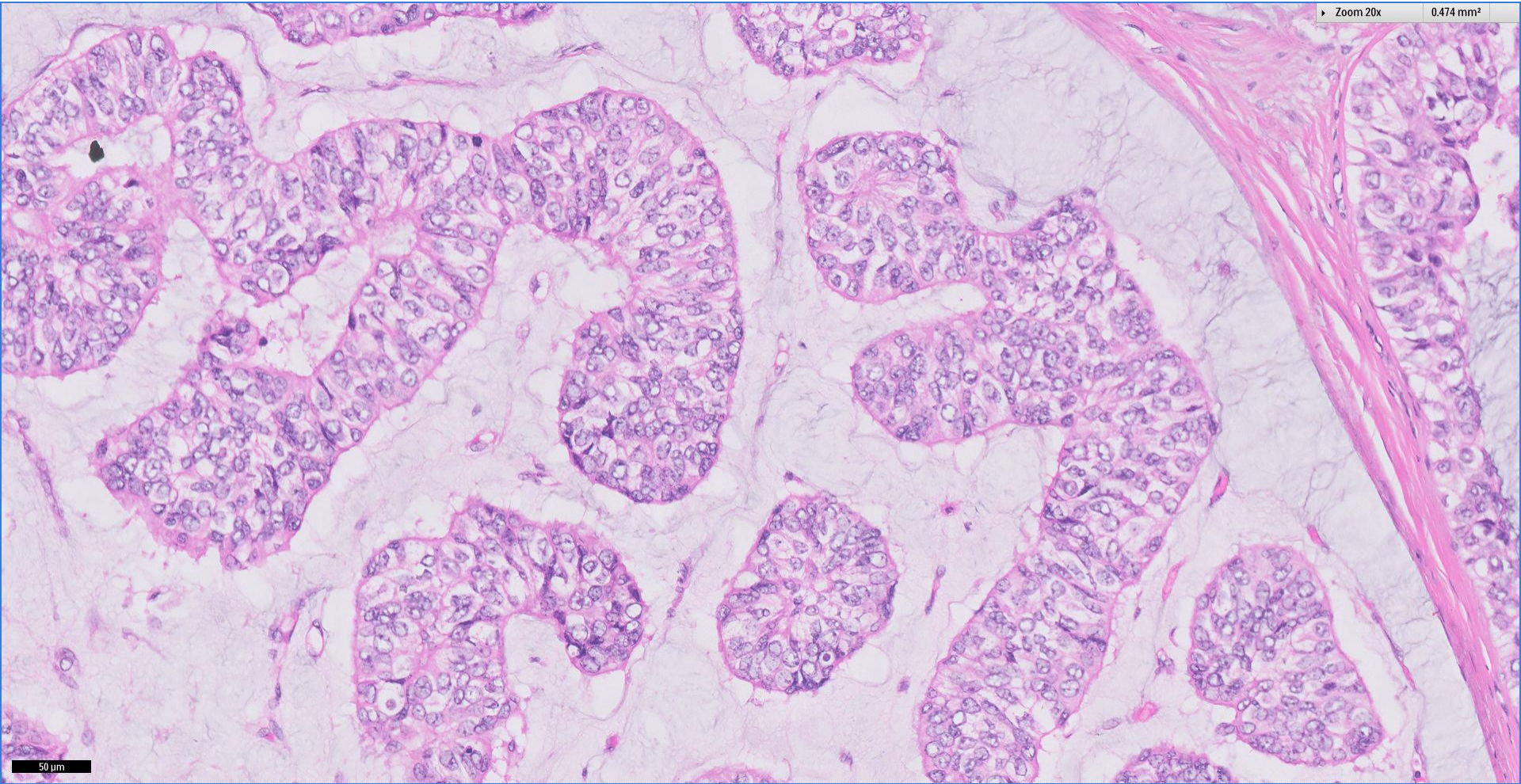


Division of Pathology
Singapore General Hospital



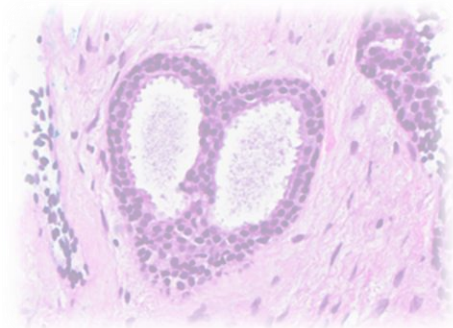
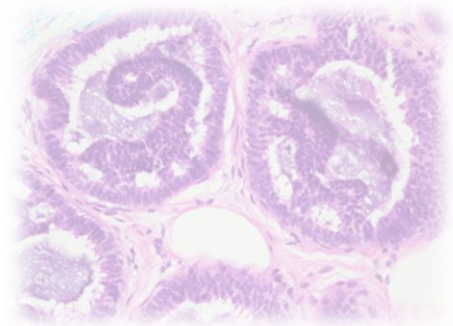
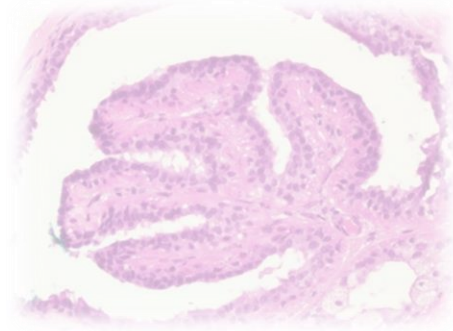






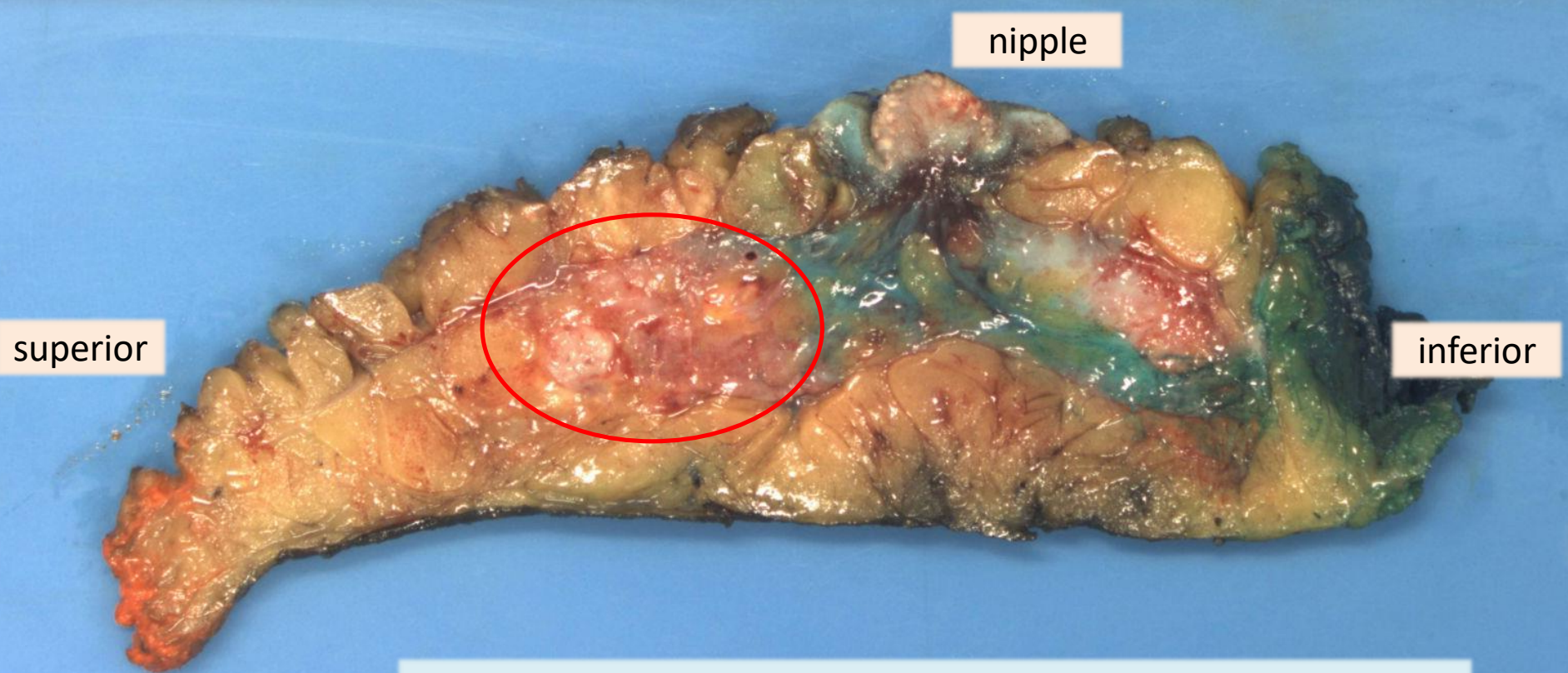
Division of Pathology
Singapore General Hospital





Additional pictures

Case 4



nipple

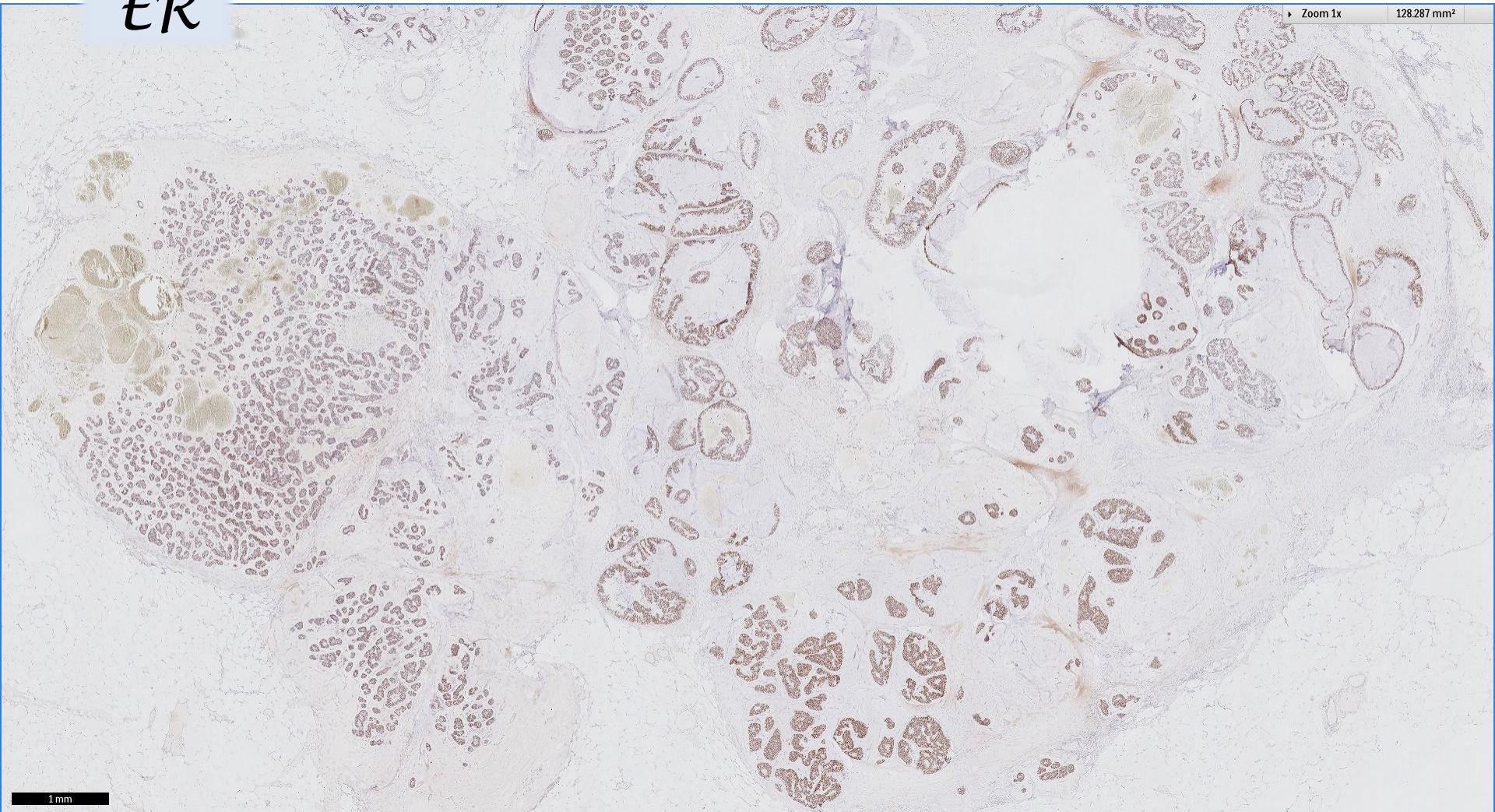
superior

inferior

Ill-defined brownish-tan area extending from the upper inner to upper outer quadrants, measuring 5.5cm x 7cm x 2cm

ER

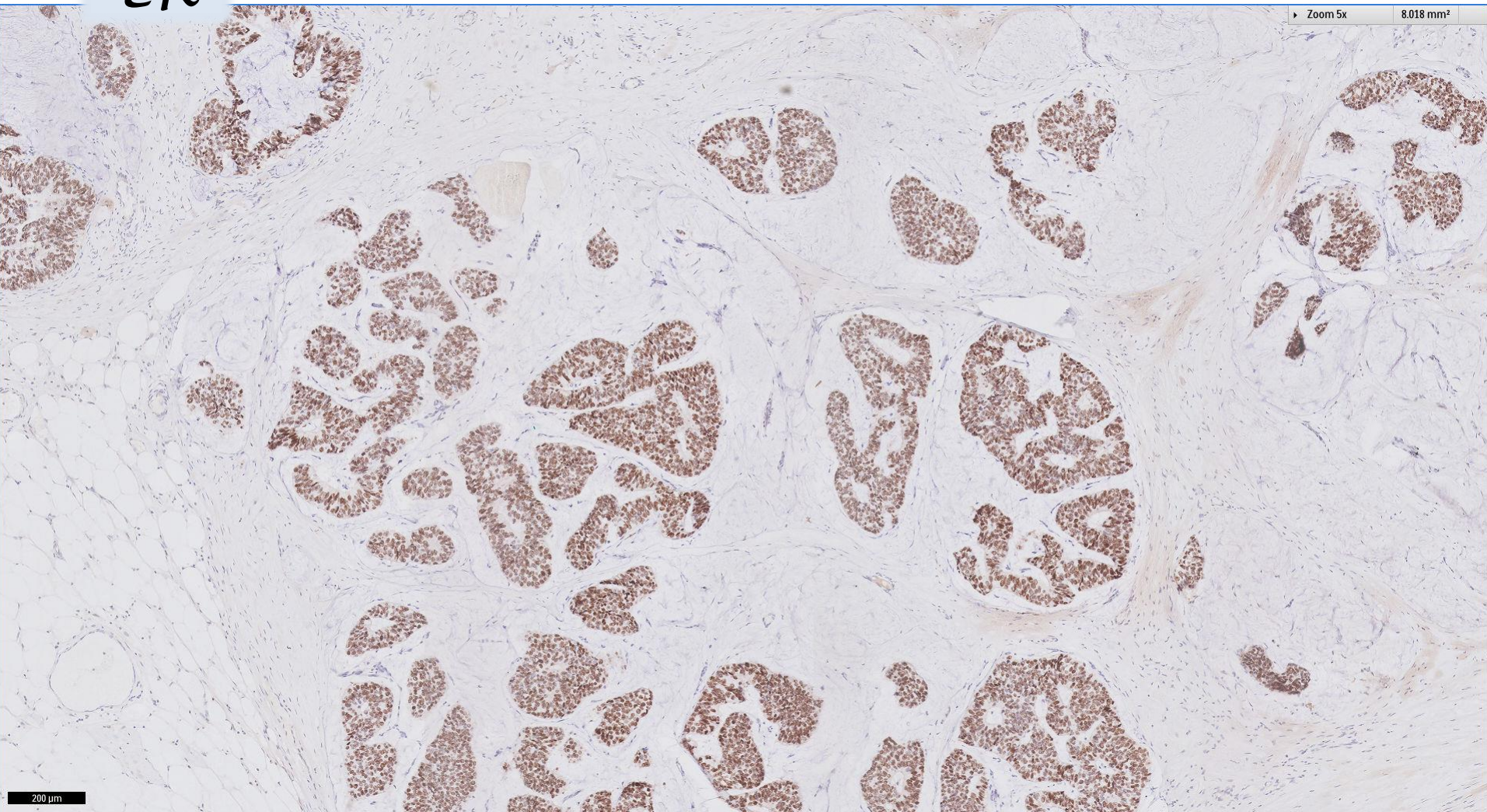
Zoom 1x 128.287 mm²



ER

Zoom 5x

8.018 mm²

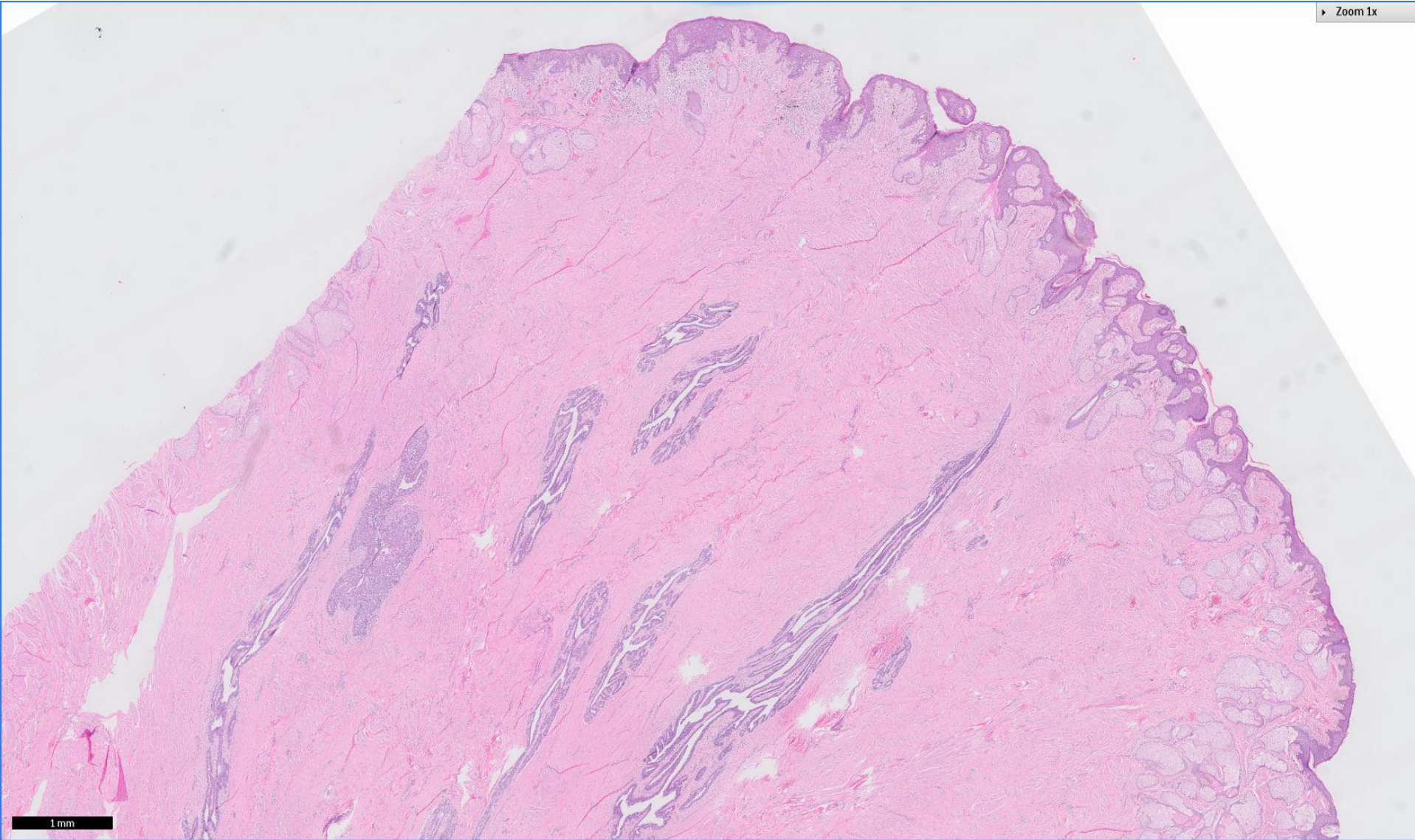


200 µm



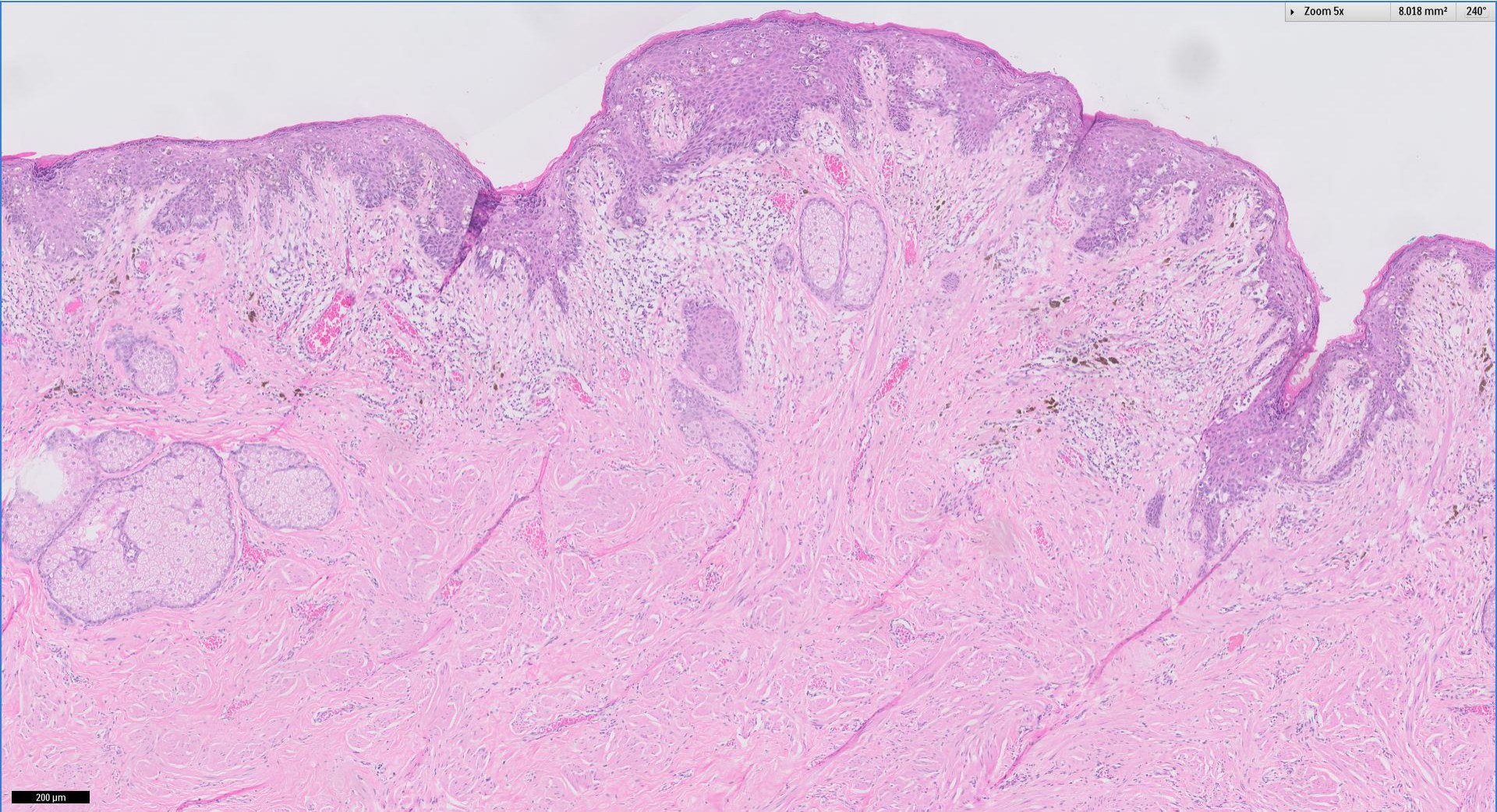
Division of Pathology
Singapore General Hospital





Division of Pathology
Singapore General Hospital



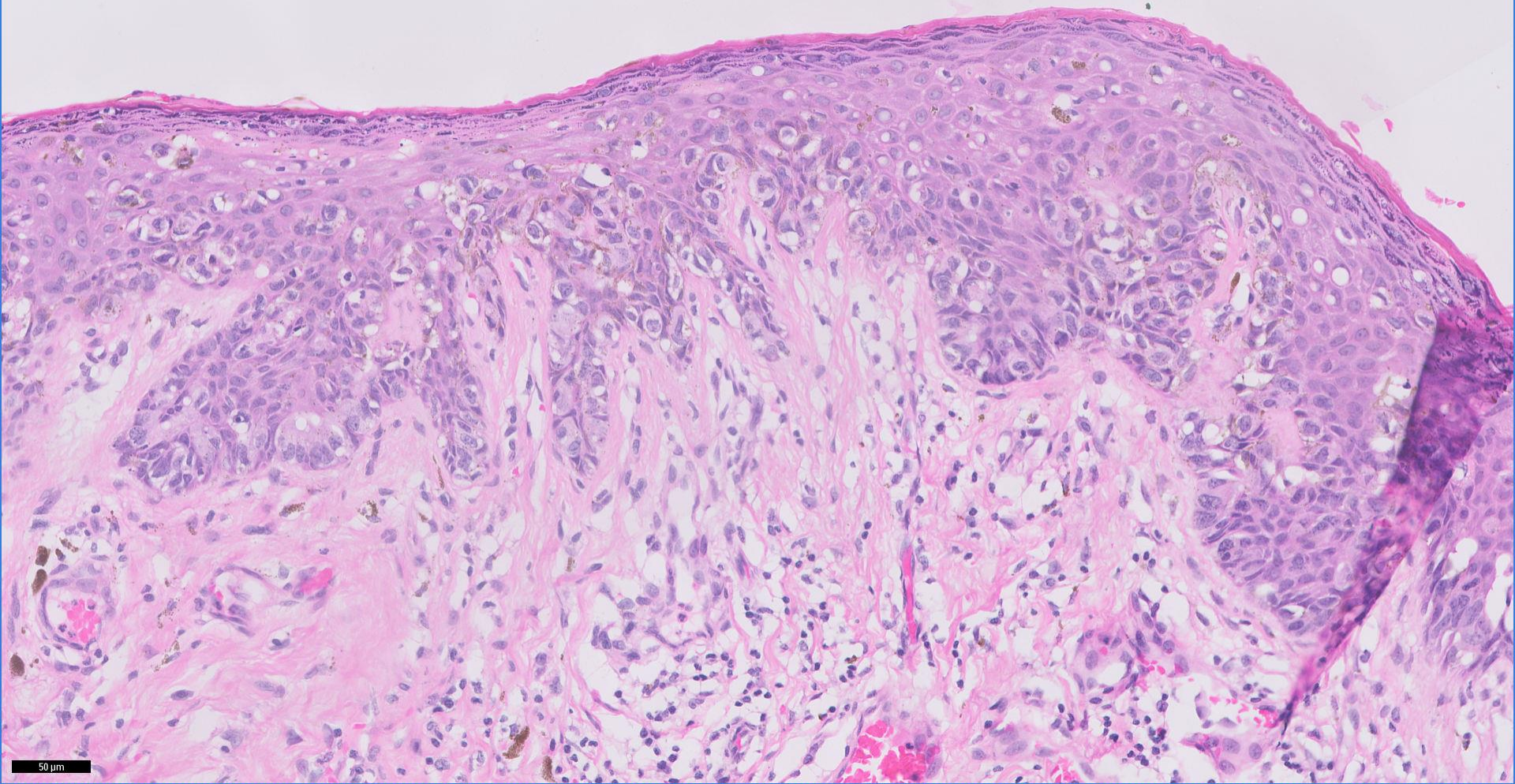


200 µm

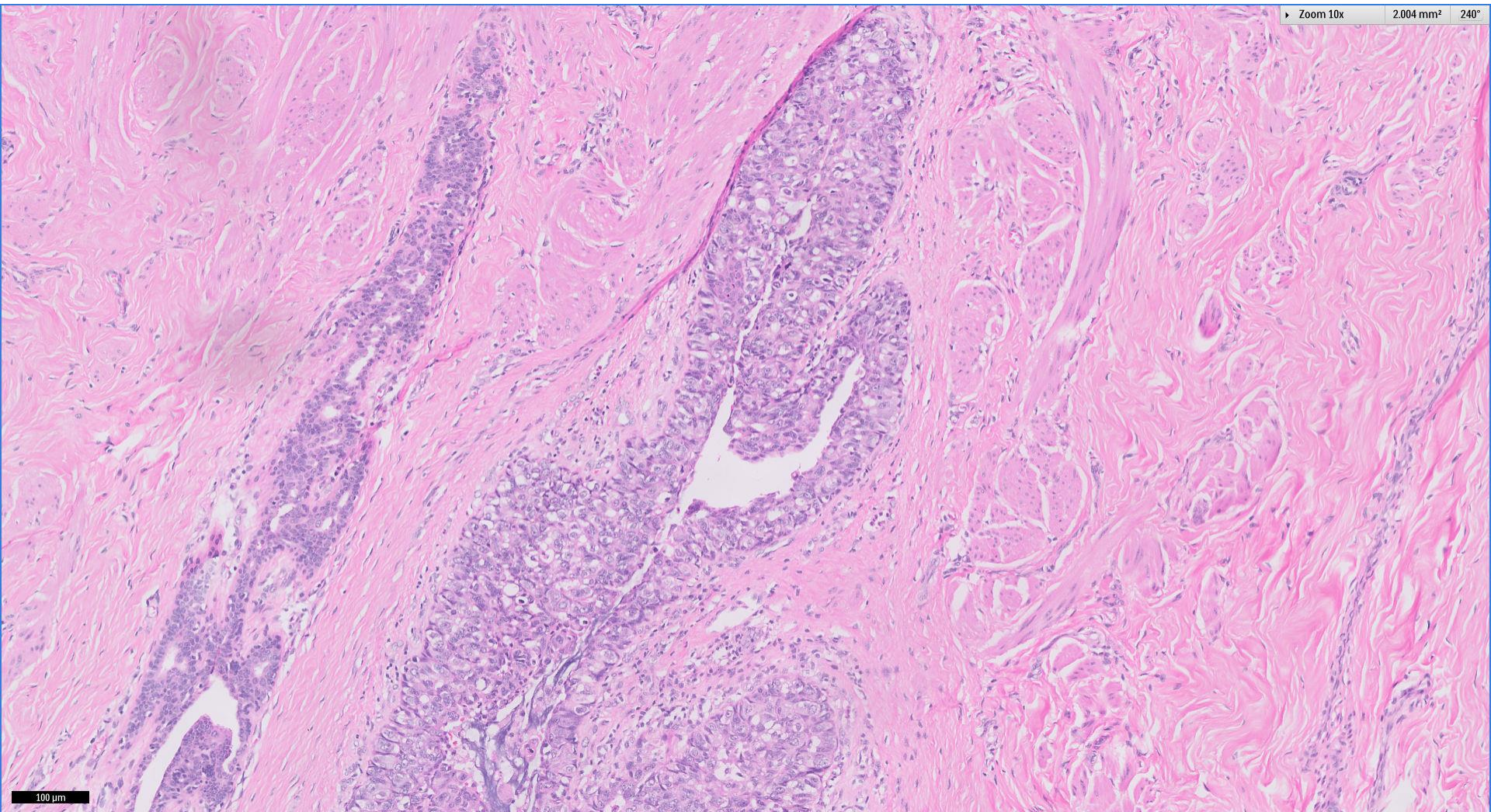


Division of Pathology
Singapore General Hospital



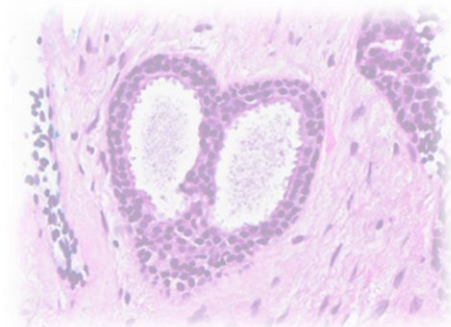
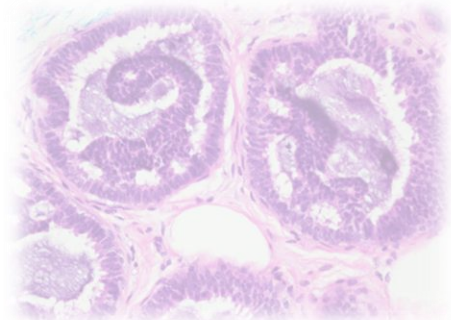
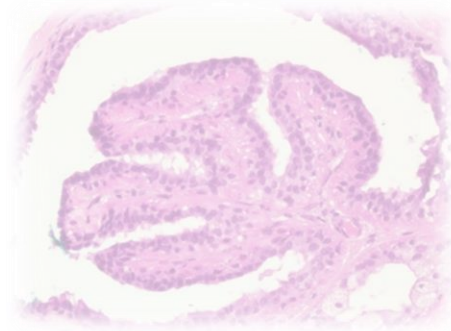


50 µm



Diagnosis, case 4

- Right breast, skin sparing mastectomy:
 - Infiltrative ductal carcinoma grade 3, with mucinous differentiation, 30mm.
 - ER+, PR focally +, cerbB2 equivocal (FISH non-amplified).
 - Paget disease of the nipple.
 - Extensive DCIS, intermediate and high nuclear grade, with mucin production, necrosis and calcifications.
- Two benign sentinel lymph nodes.



Discussion

- Terminology ~
 - ? Mucinous carcinoma grade 3 or invasive carcinoma NST with mucinous differentiation.

Thank You