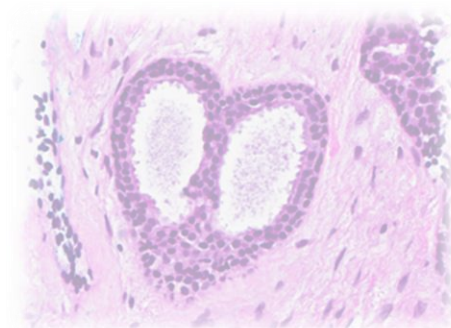
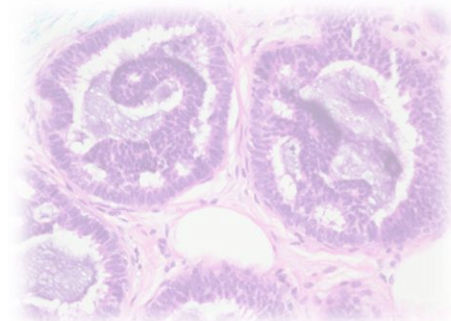
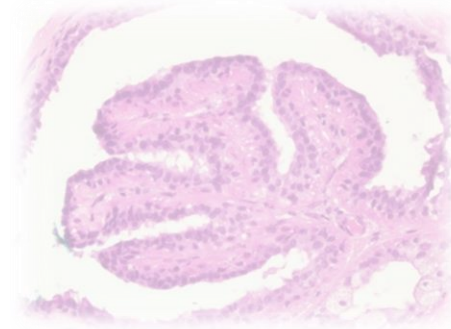
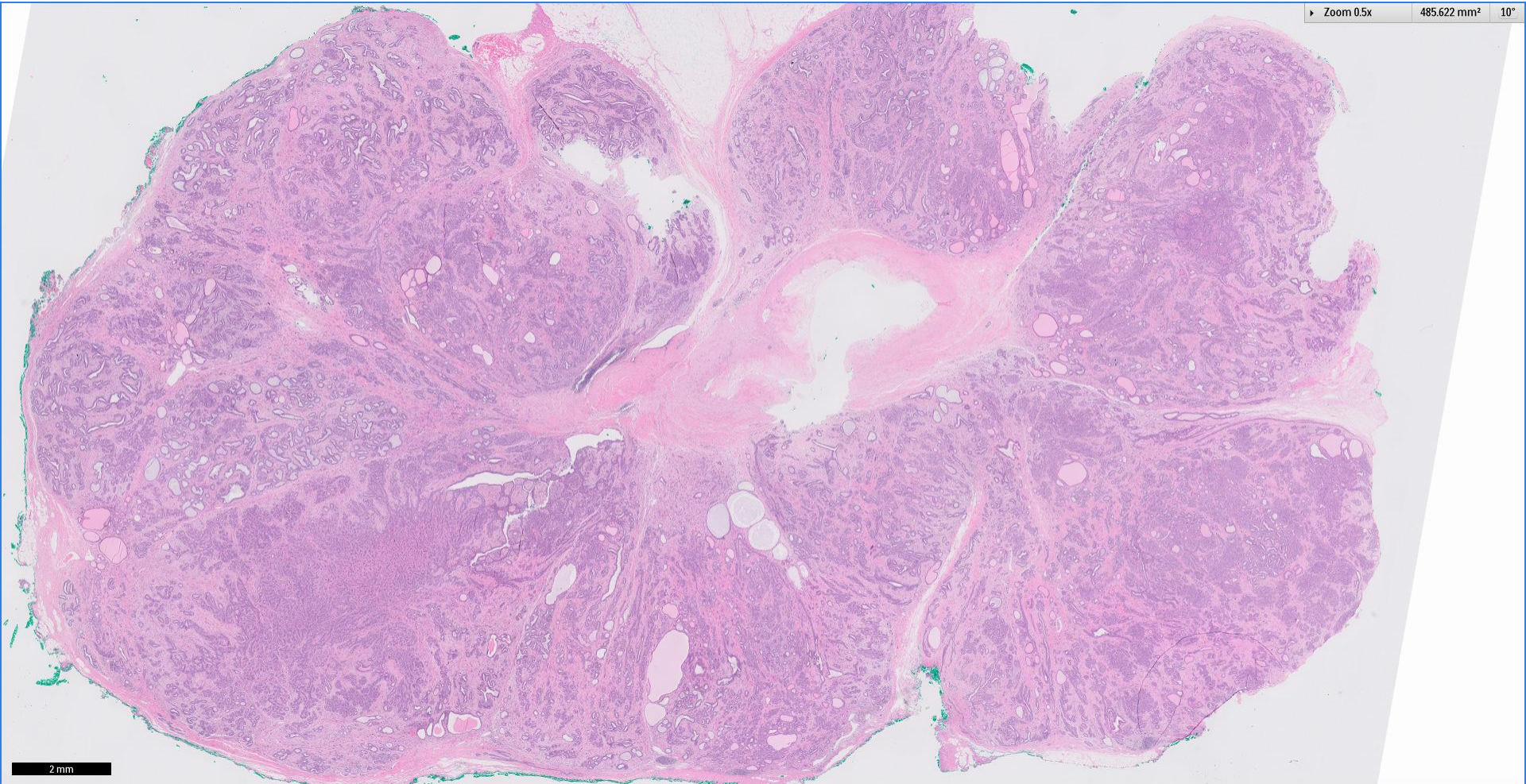
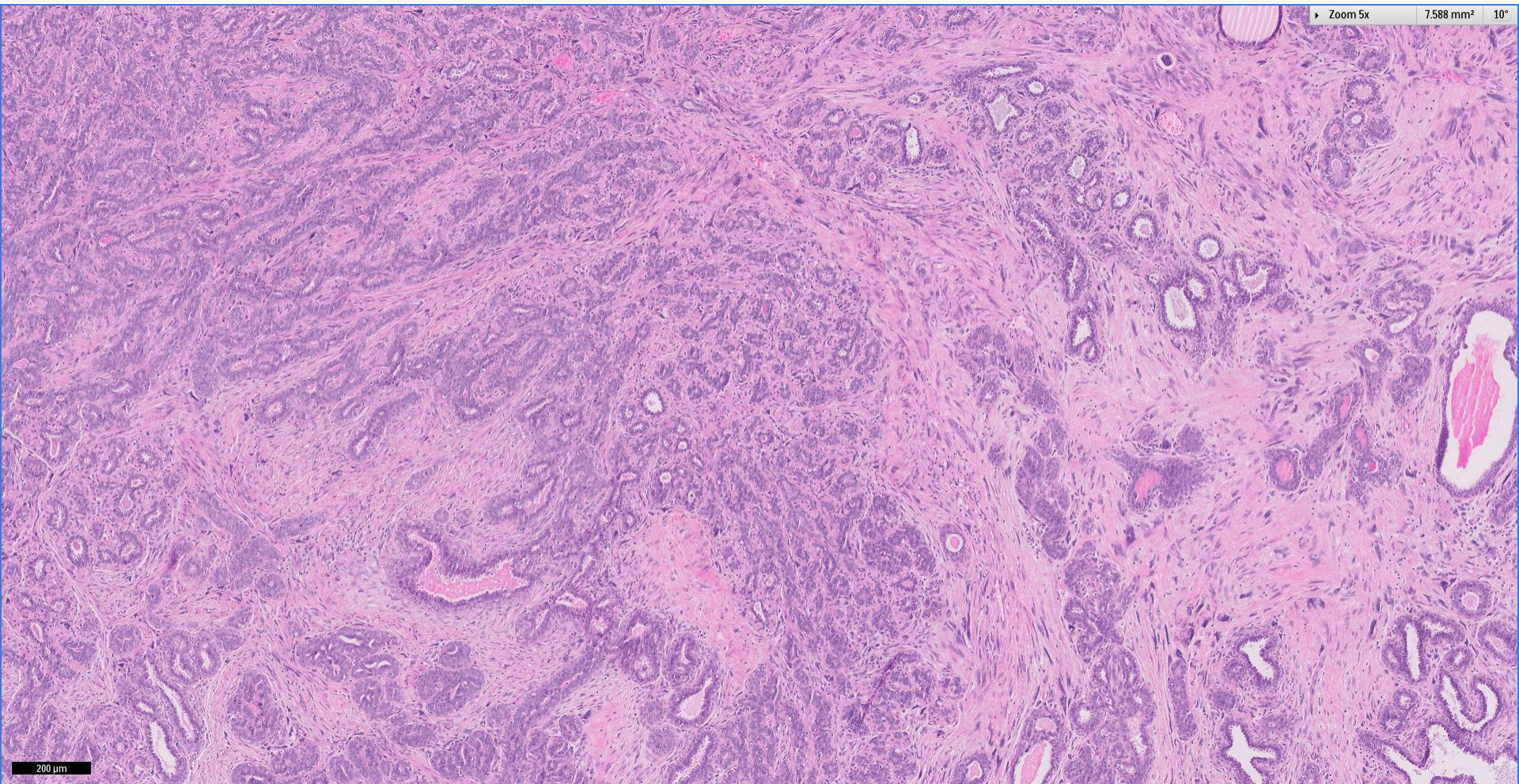


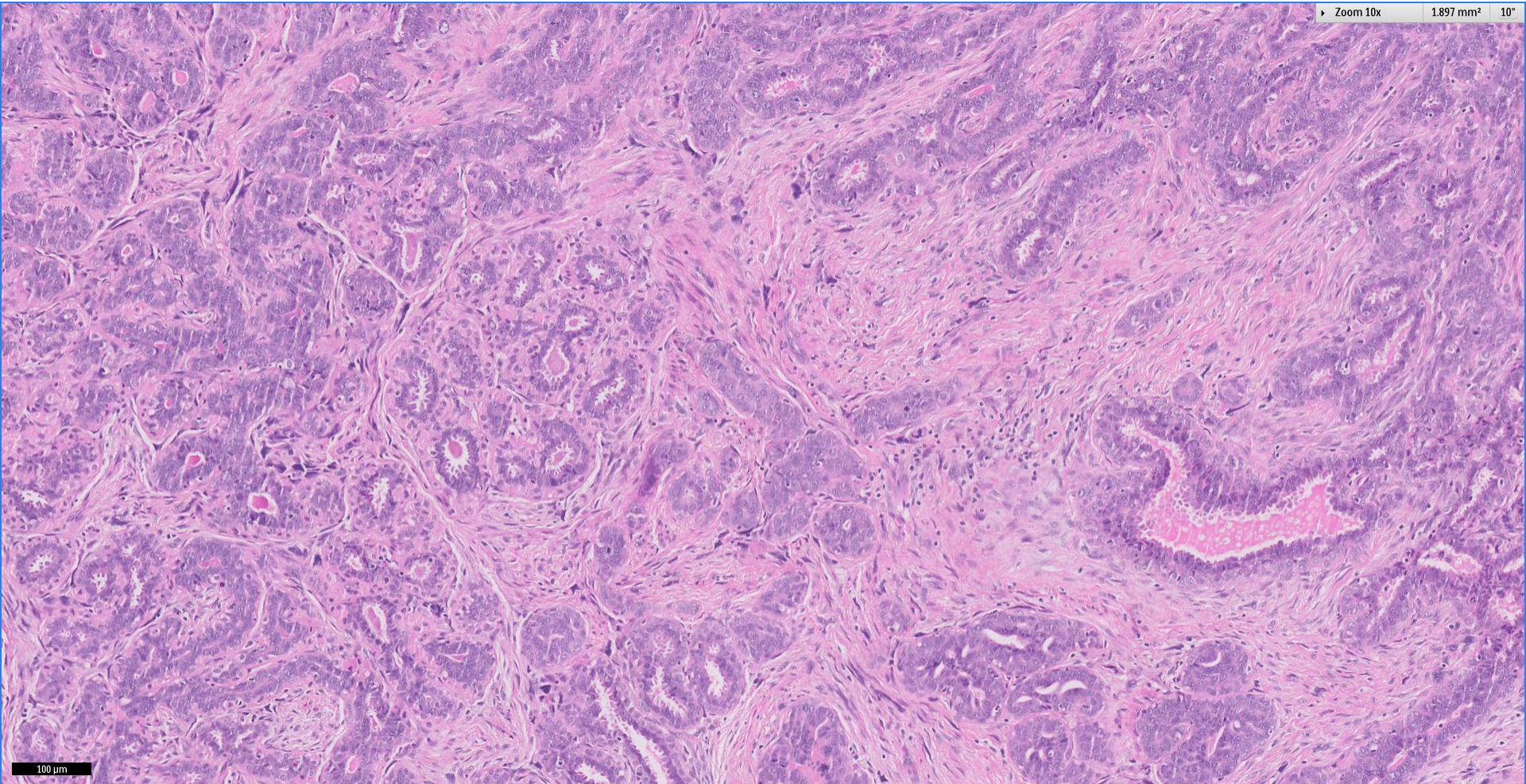
Case 10

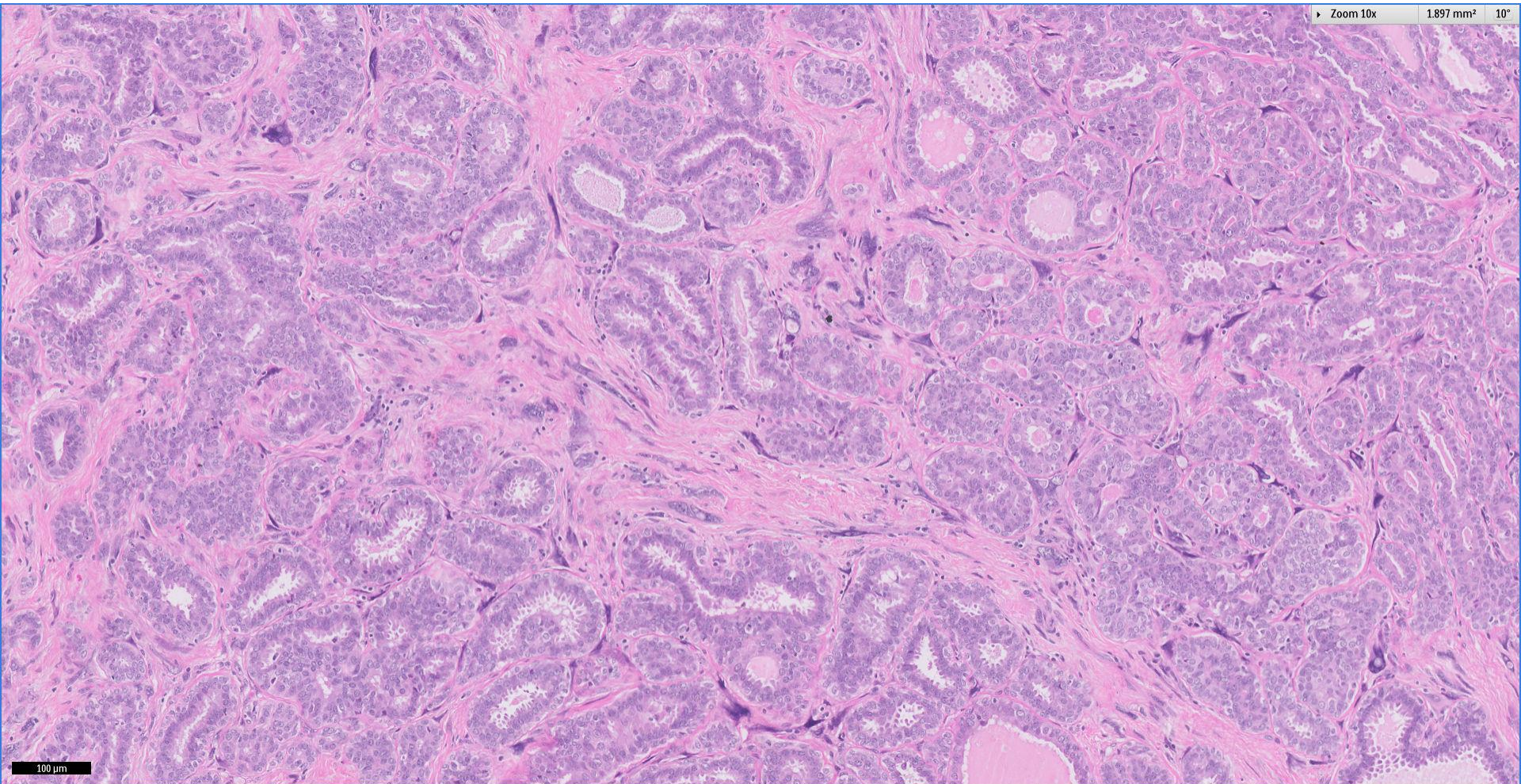
36 year old Malay female.
Left breast lump, excision biopsy.





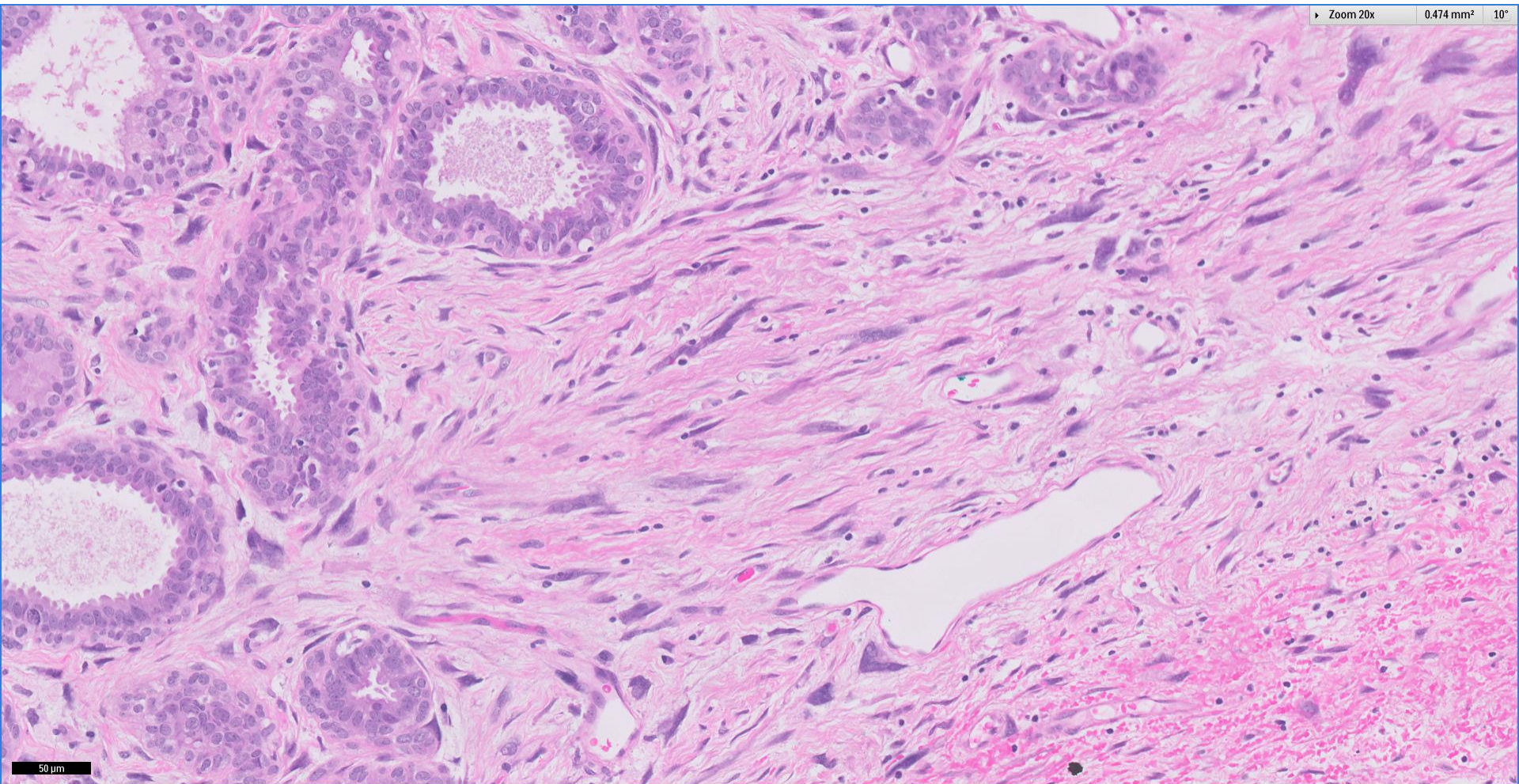


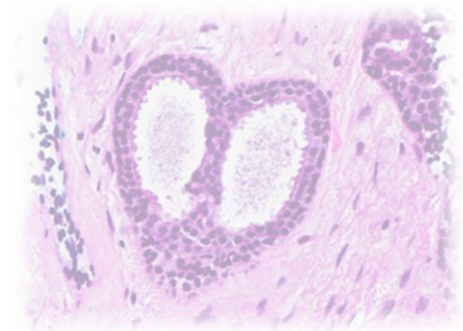
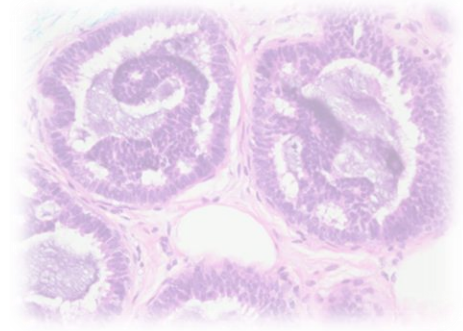
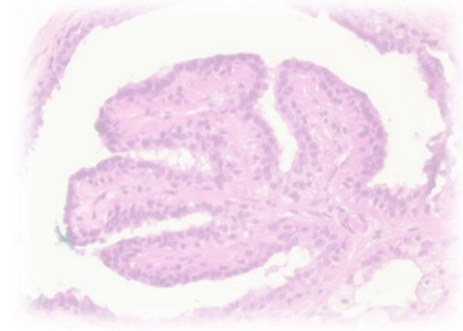




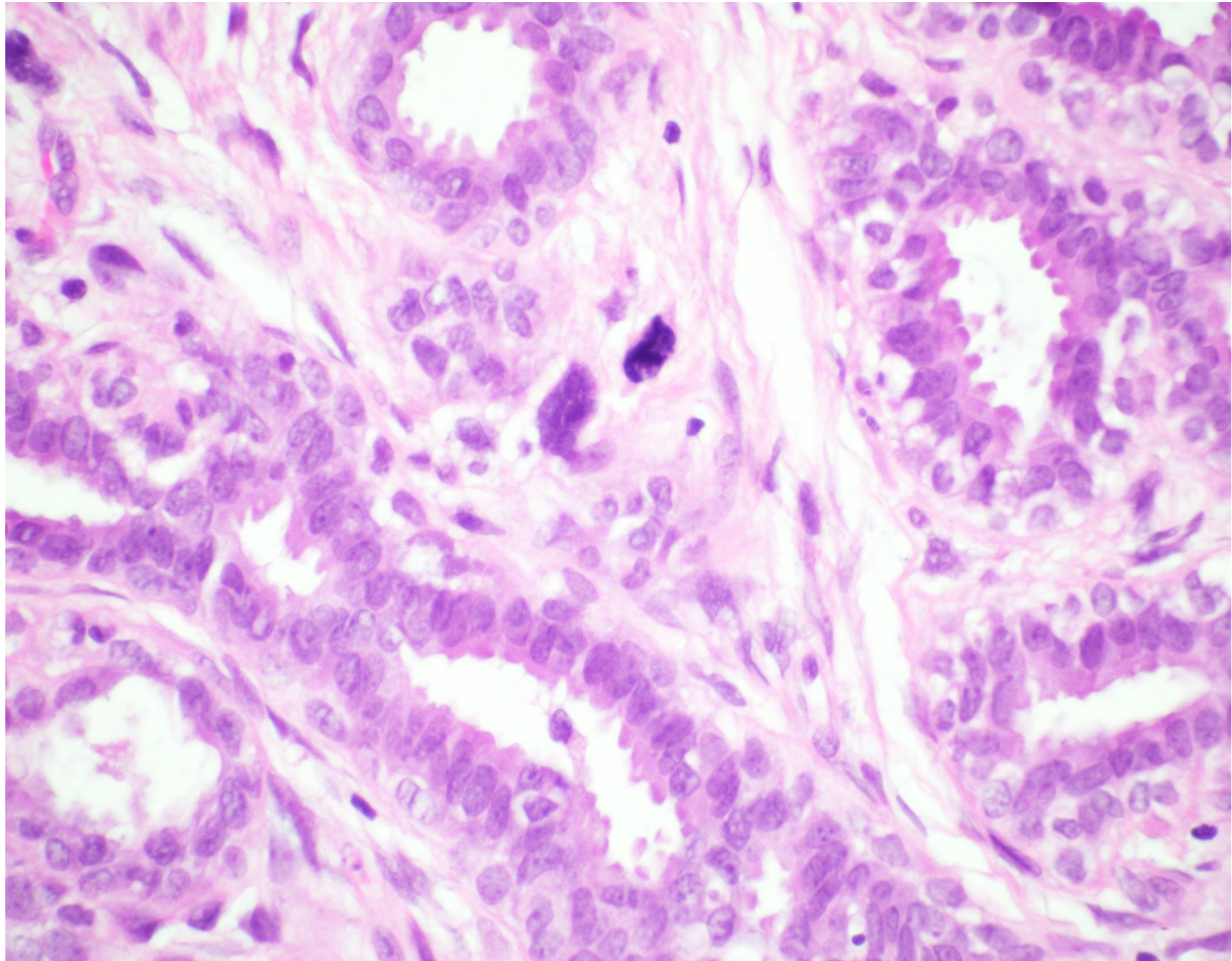
Division of Pathology
Singapore General Hospital

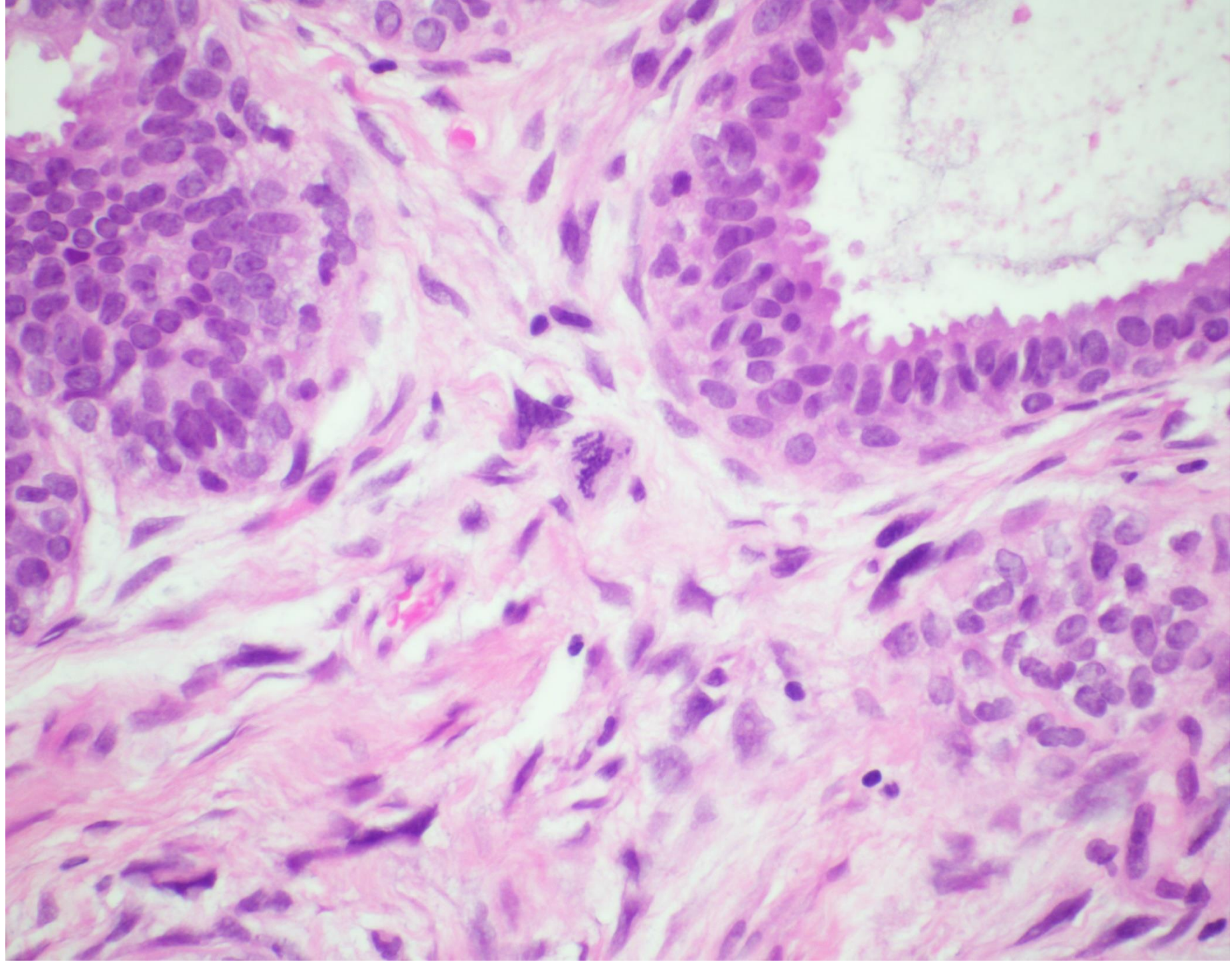


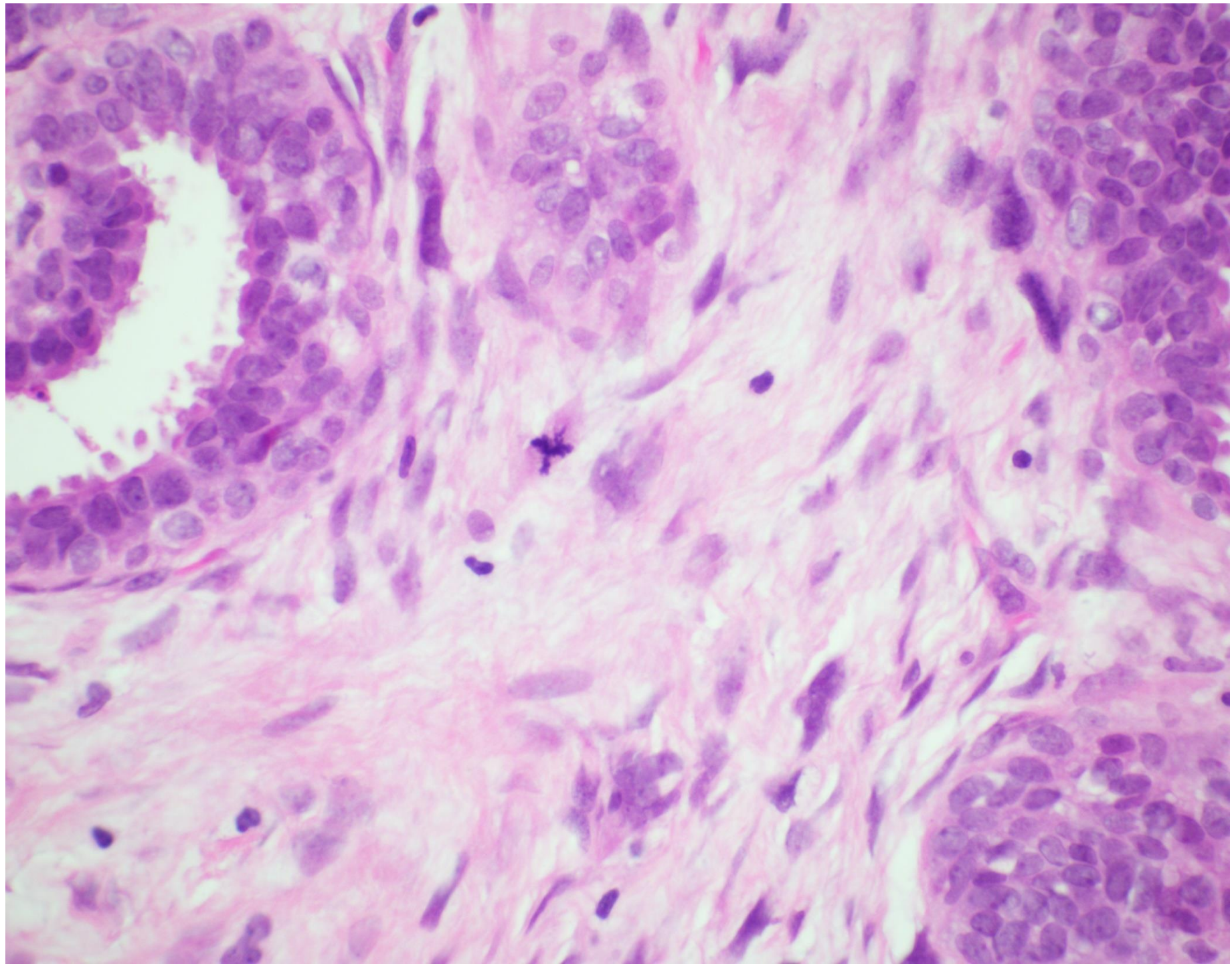




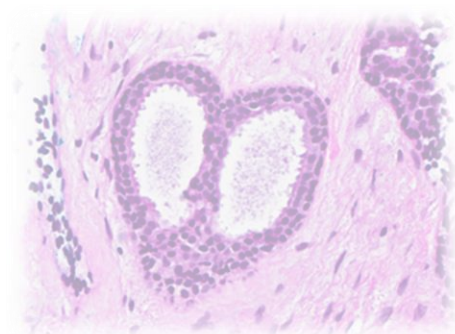
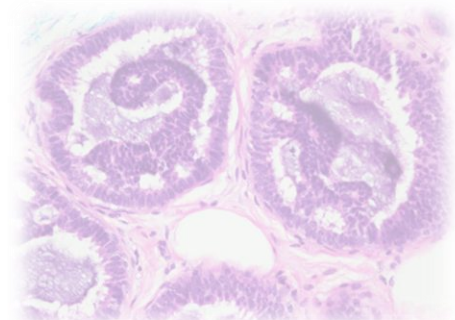
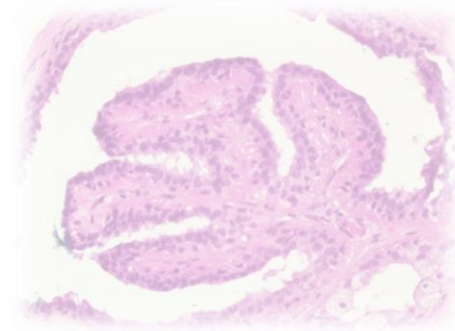
Additional pictures



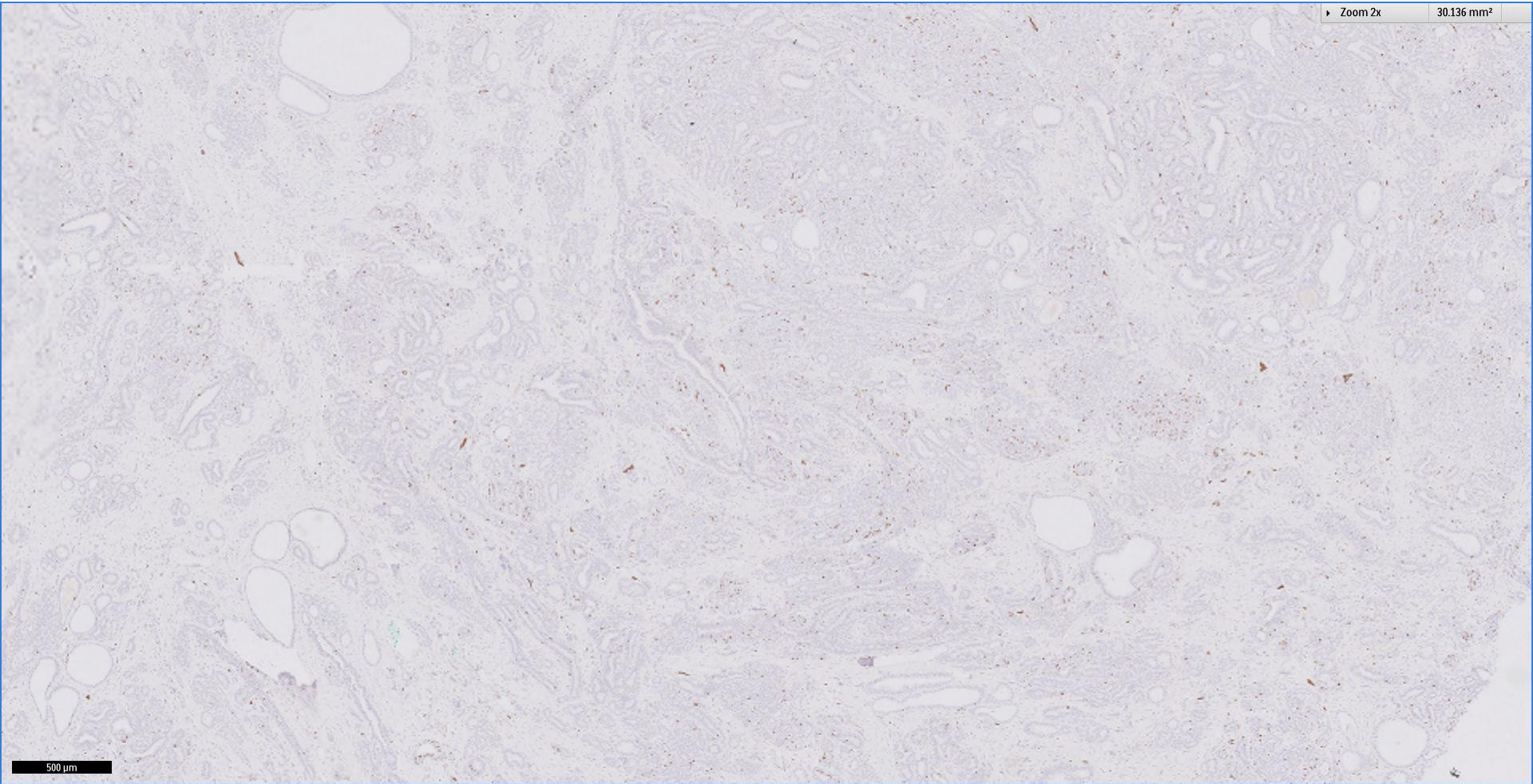




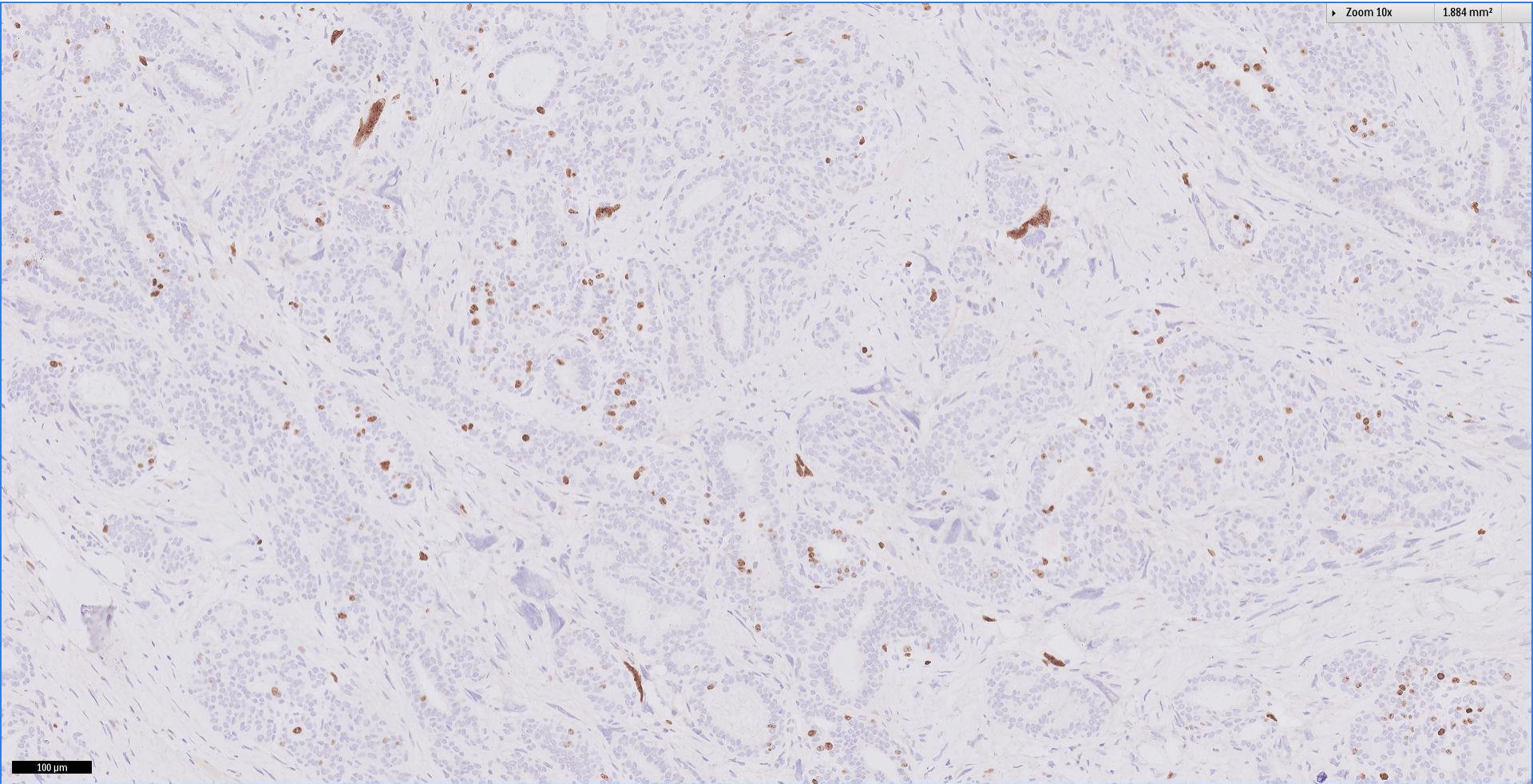
- Stromal mitotic activity ~ 3 to 5 per 10 hpfs.
- Abnormal mitoses ~ tripolar, quadripolar, pentapolar forms.
- No malignant heterologous component.



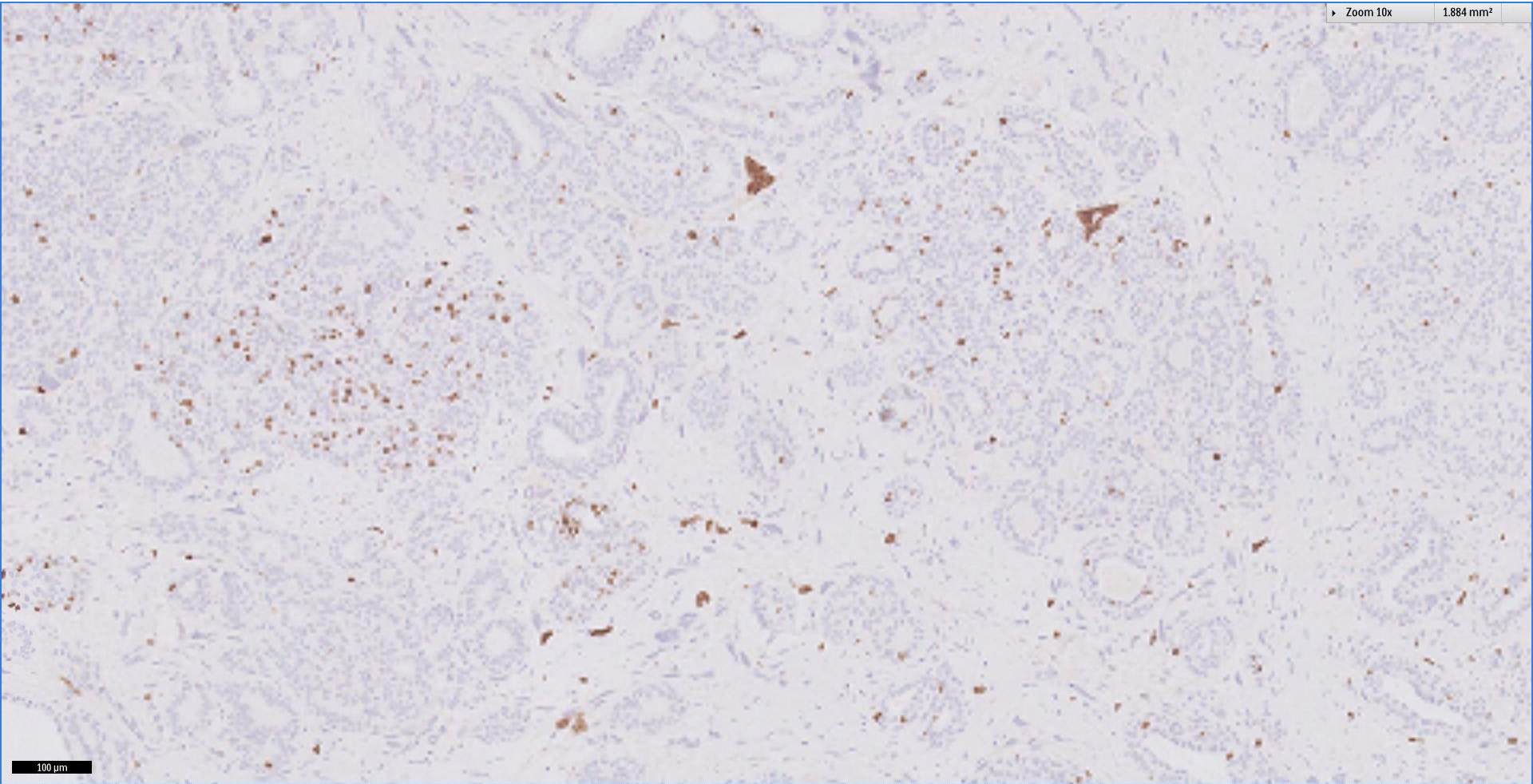
Ki67



Ki67

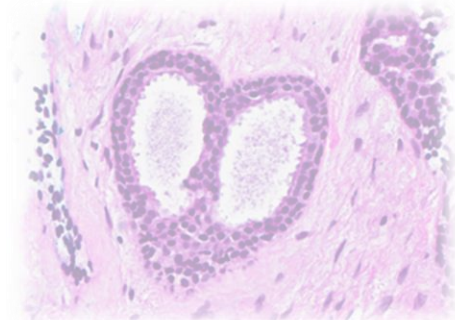
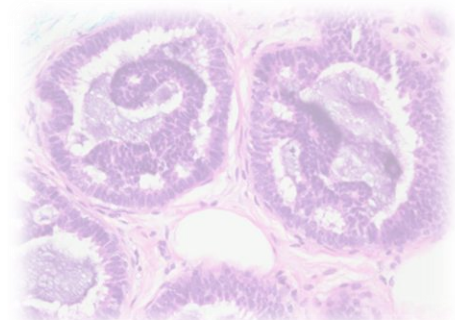
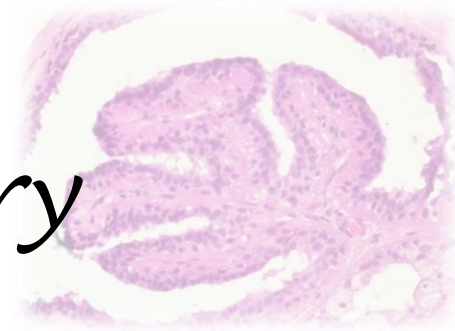


Ki67



Immunohistochemistry

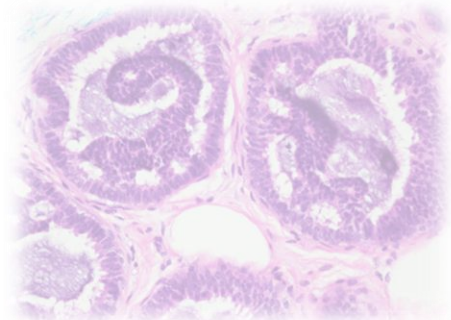
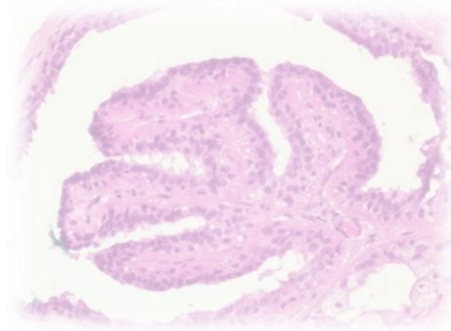
- CD34 ~ diffuse stromal reactivity.
- p53 ~ sparse scattered stromal nuclei are reactive.
- Ki67 ~ approximately 20%.
- CD68 ~ abnormal stromal cells are negative.



Diagnosis, case 10

- Left breast lump, excision biopsy:
Fibroepithelial tumour, favour phyllodes tumour of borderline grade, 4cm.

{marked stromal atypia with abnormal mitoses, increased proliferation fraction}



Thank You