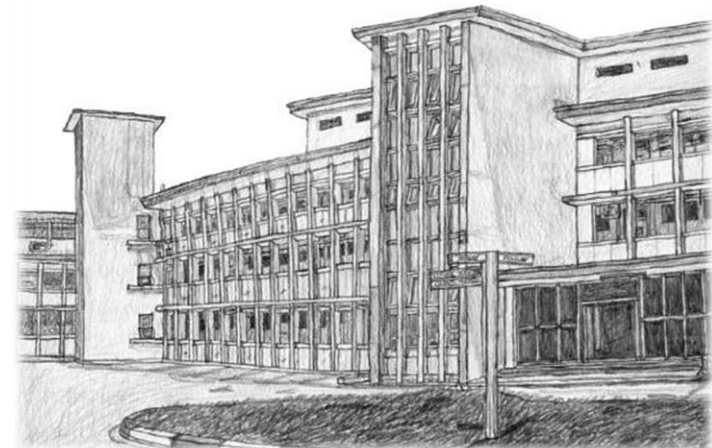
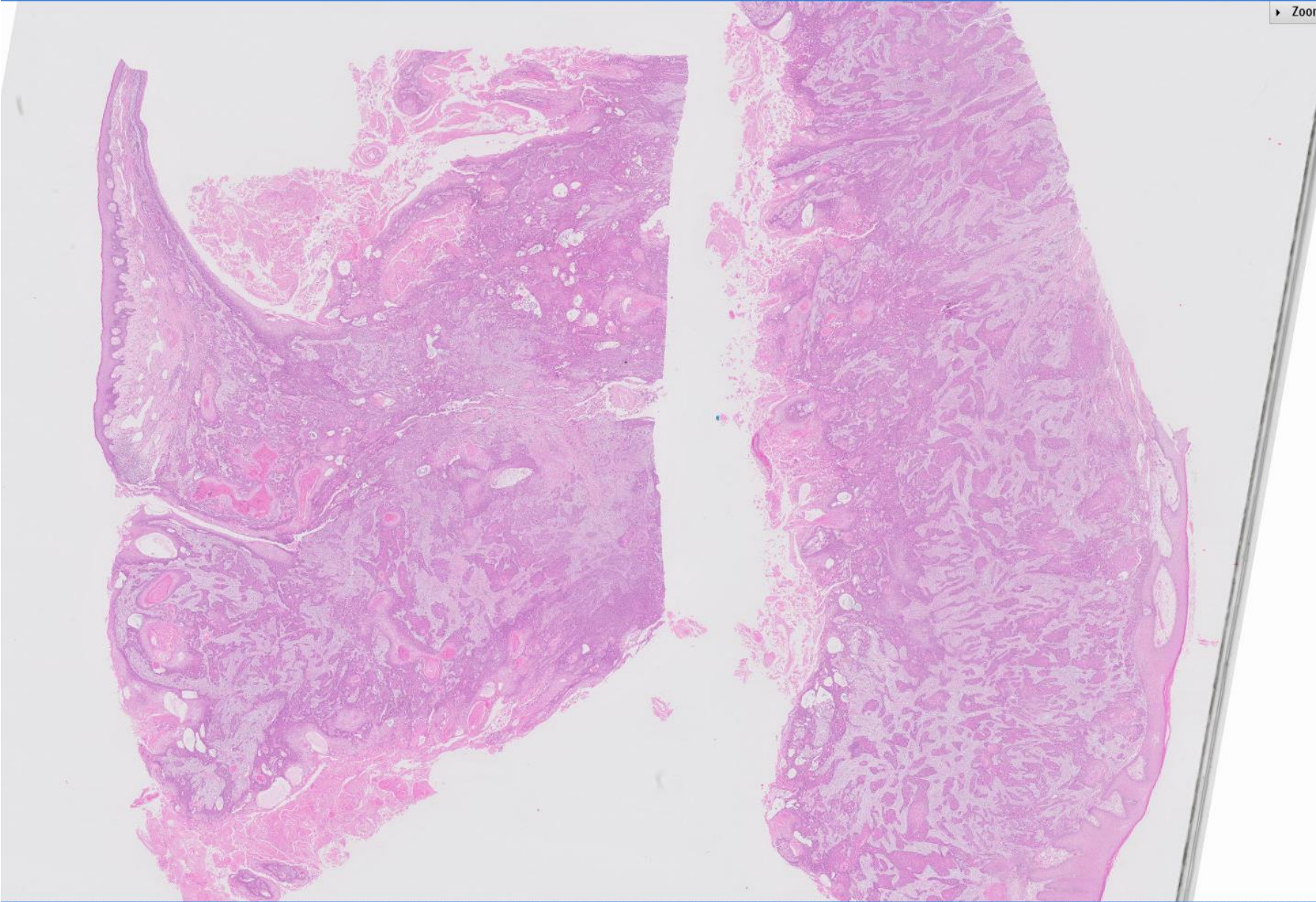
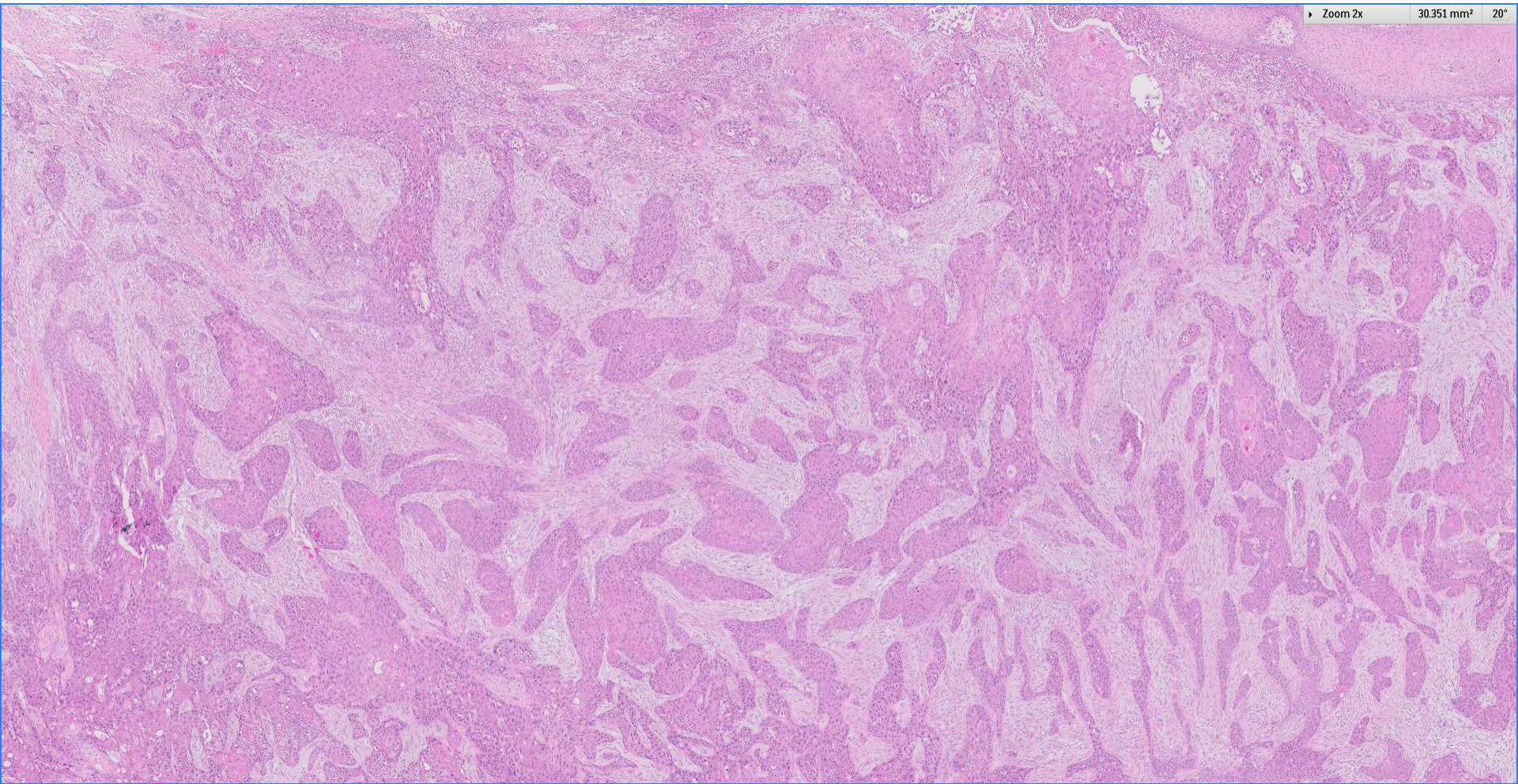


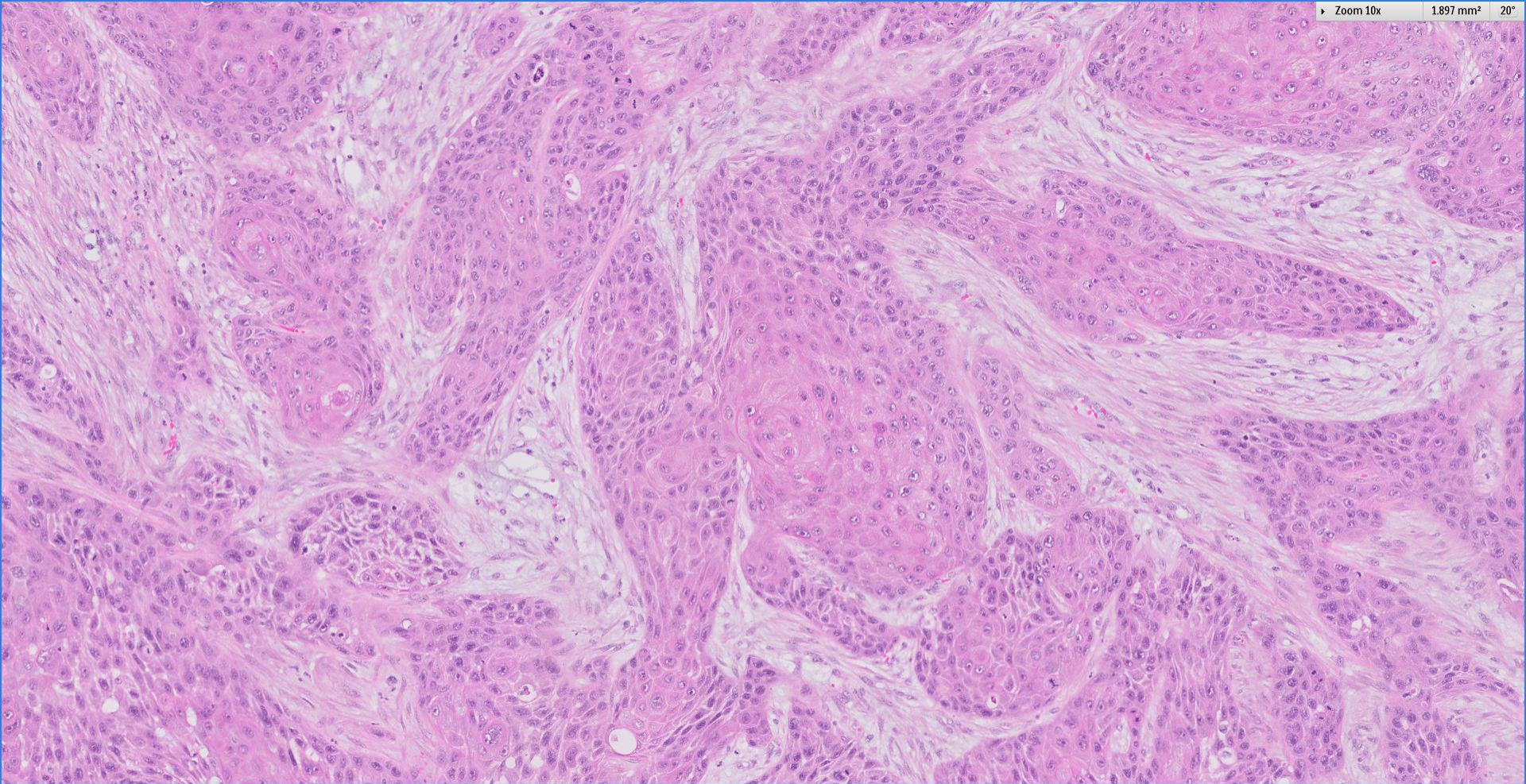
Case 33

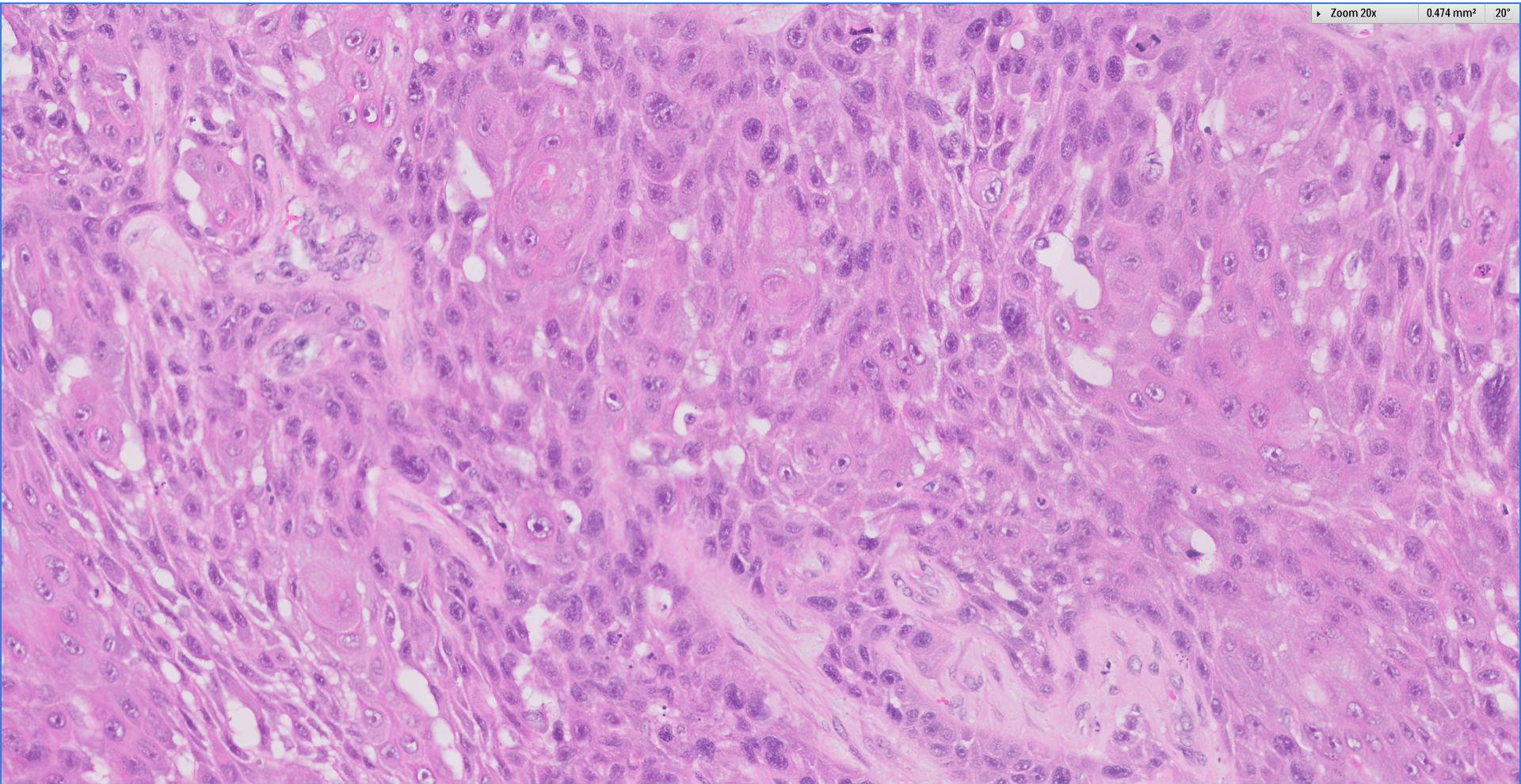
60 year old female.
Right breast mastectomy.
Ulcerating fungating 5cm mass.

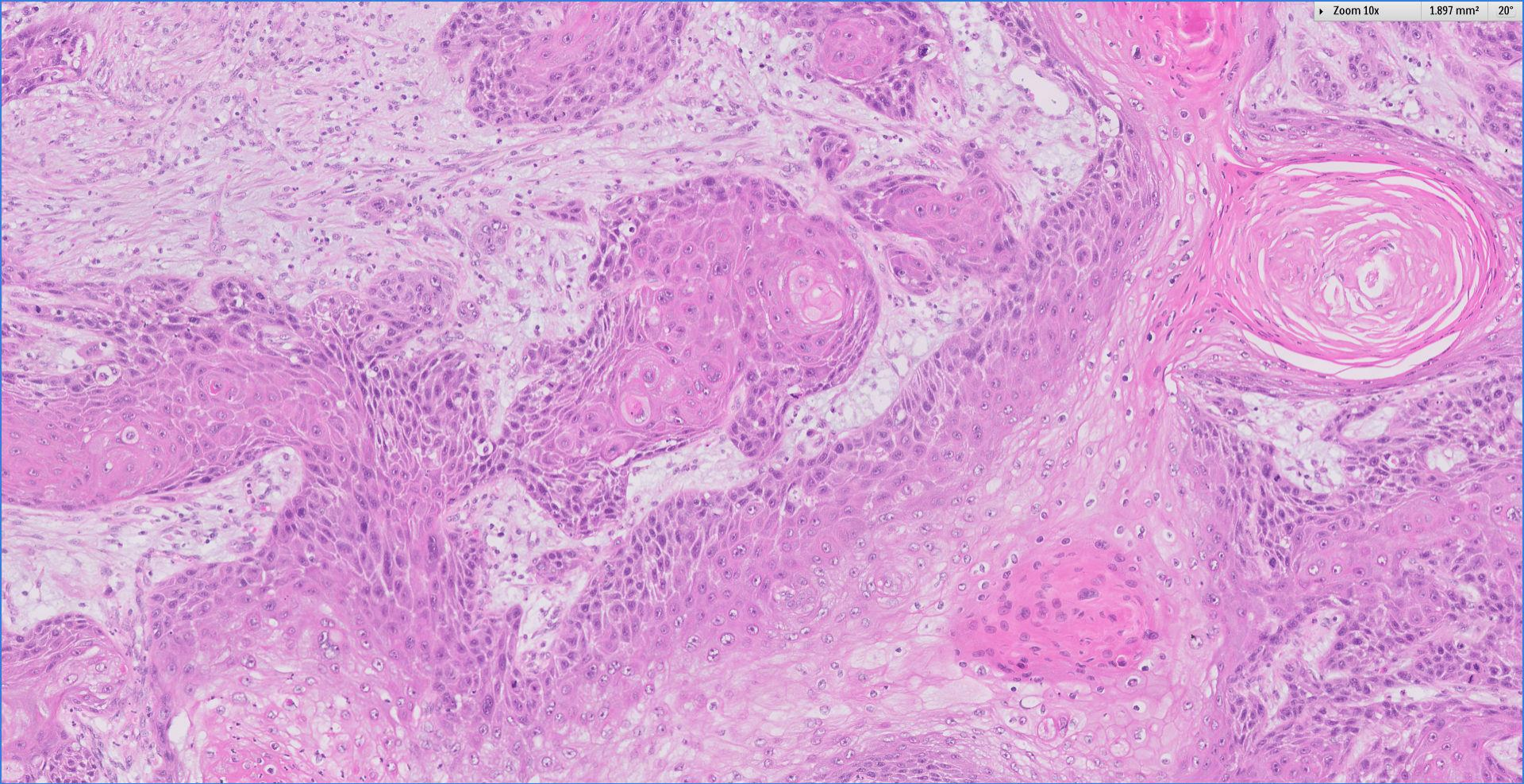




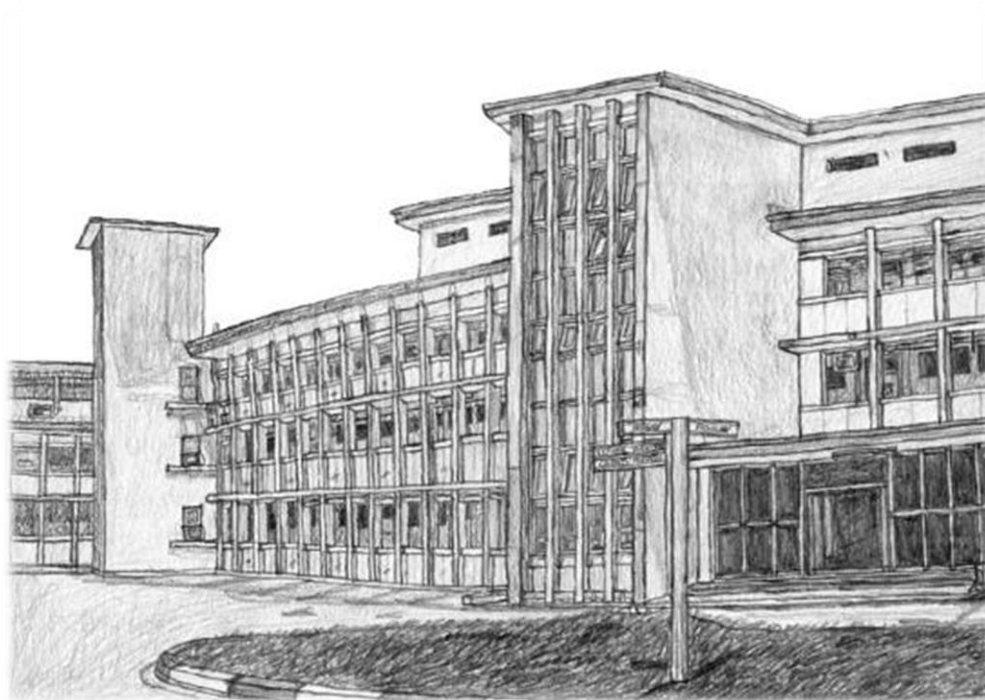








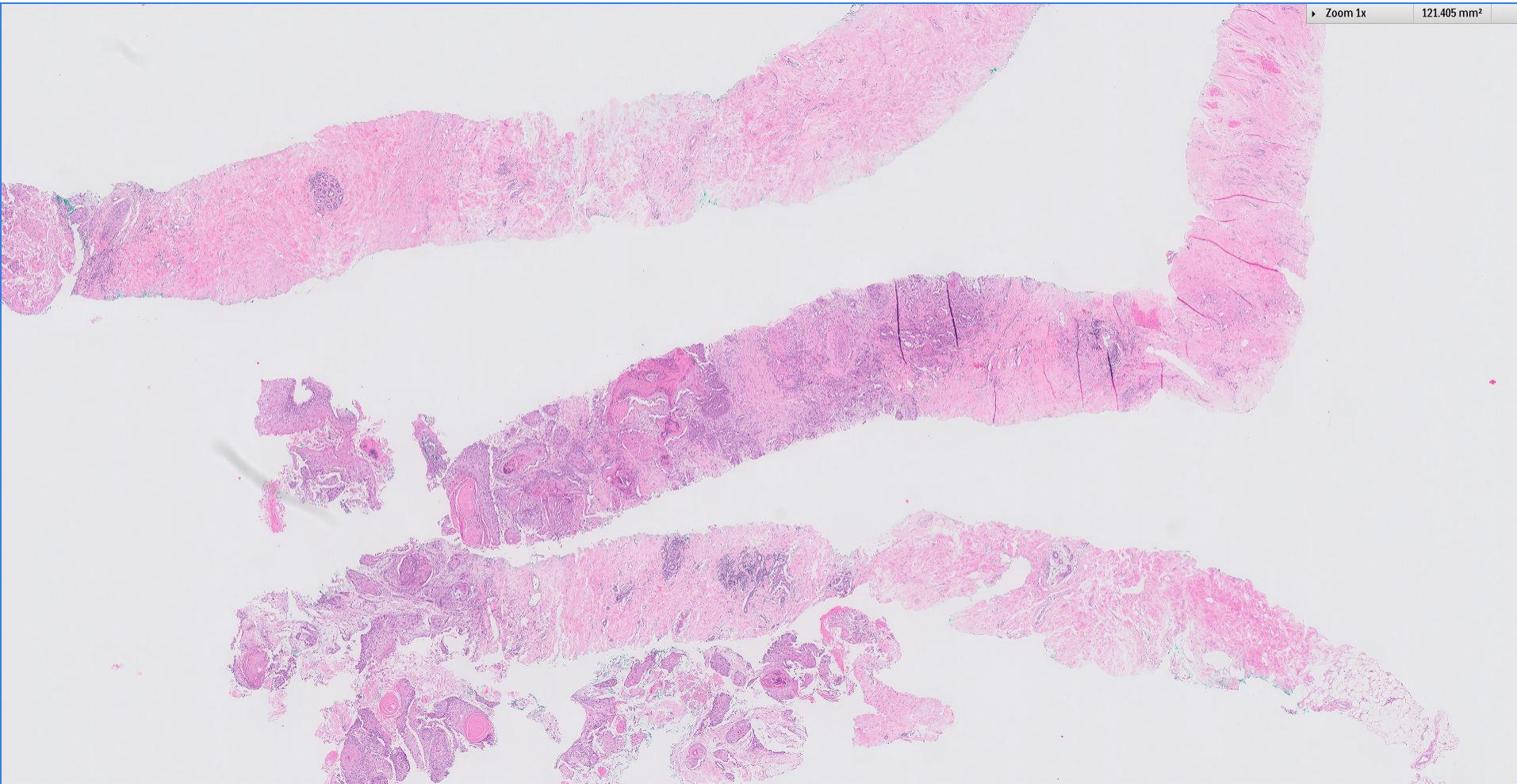
 Breast
Pathology
Course 2018



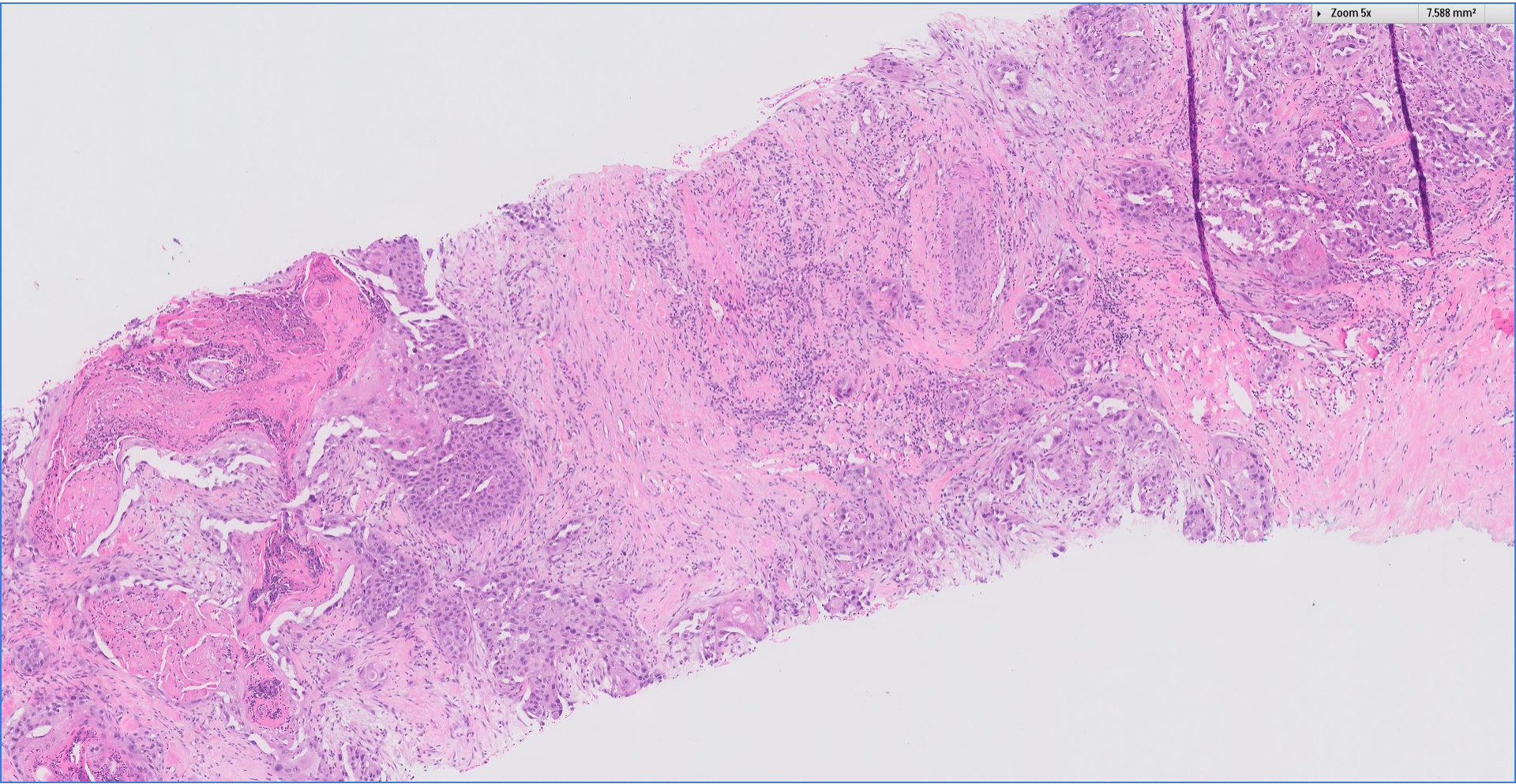
Singapore
General Hospital
SingHealth
Division of Pathology



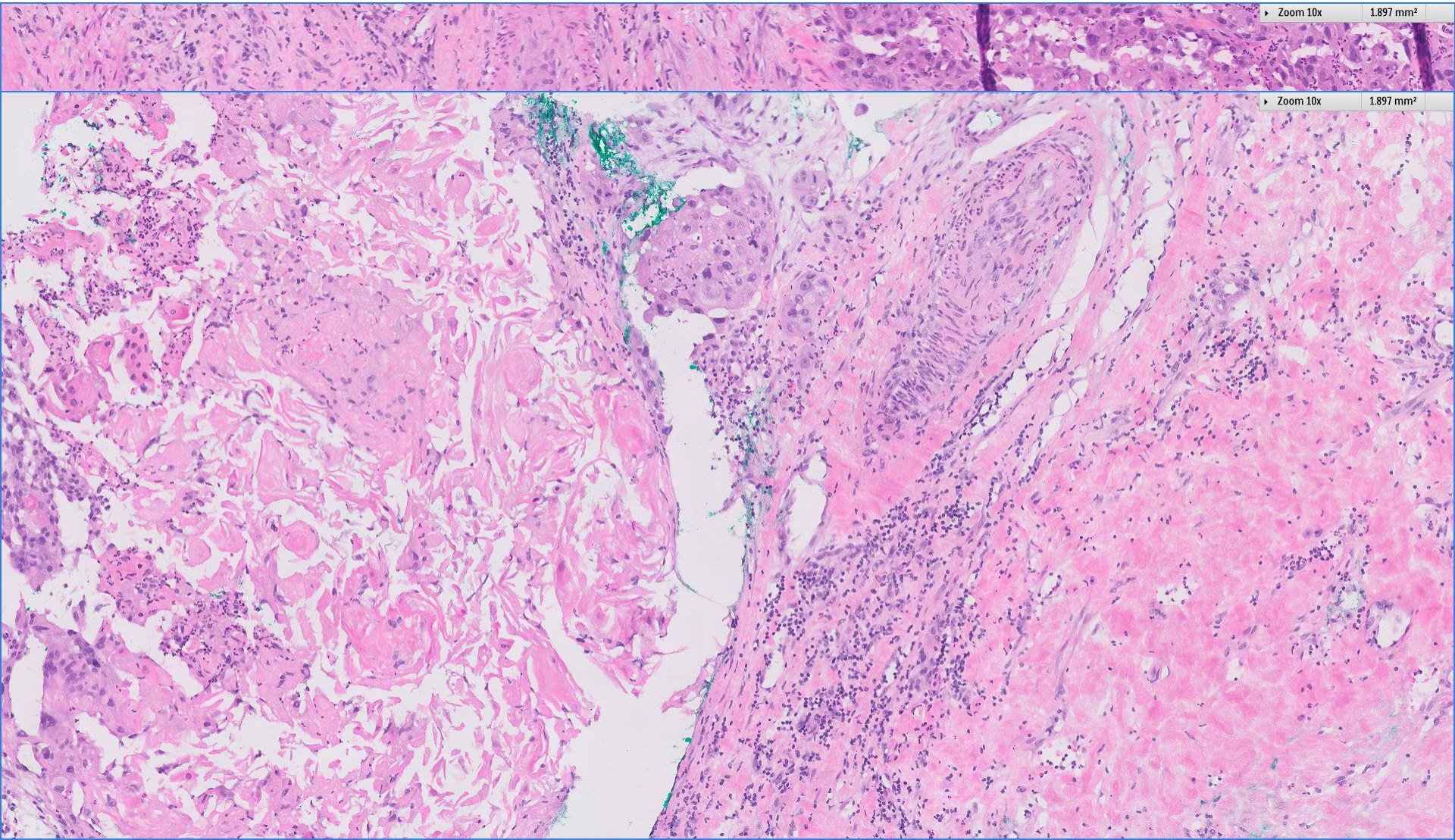
Previous core biopsy (6 months prior to mastectomy)



Previous core biopsy (6 months prior to mastectomy)



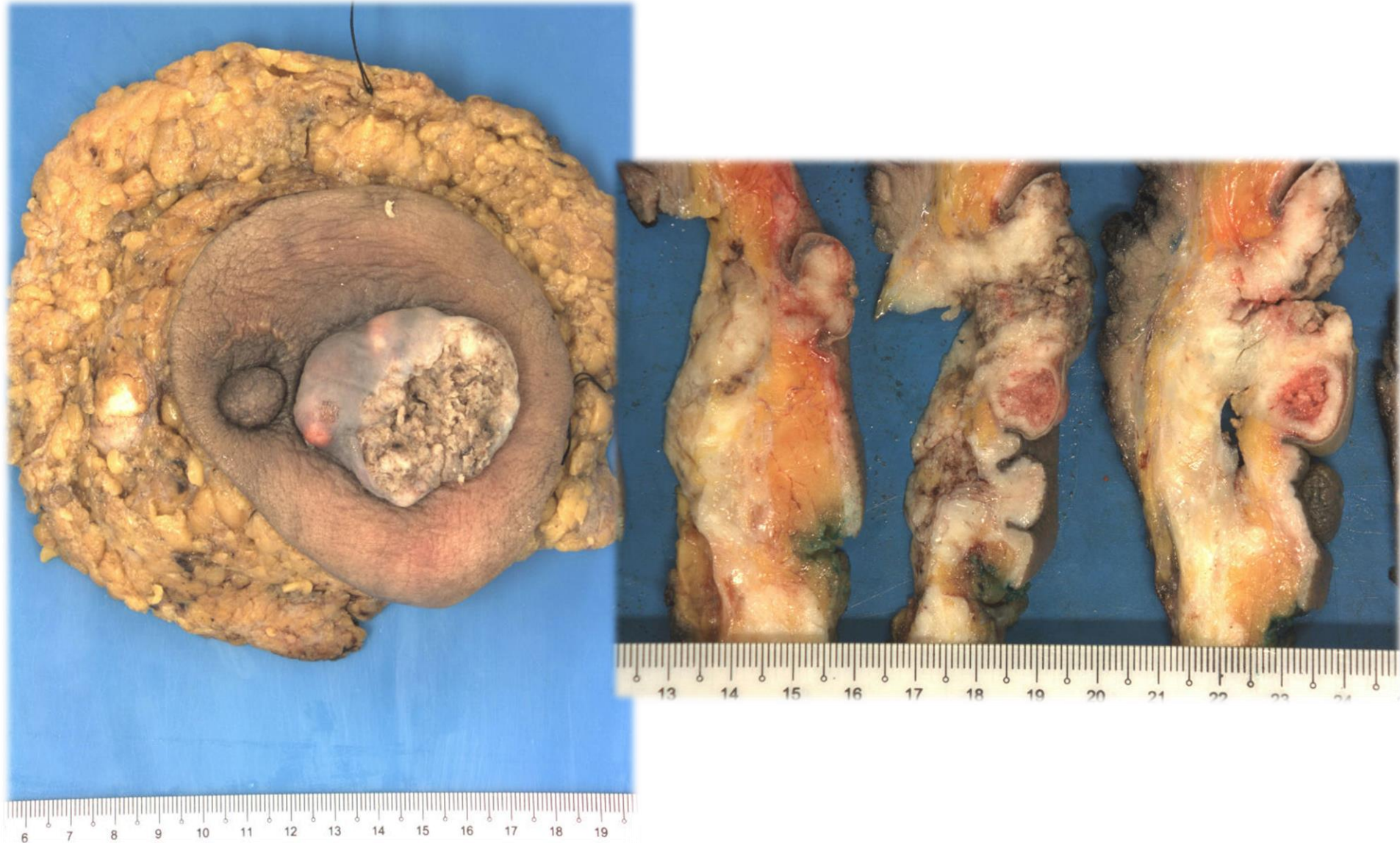
Previous core biopsy (6 months prior to mastectomy)

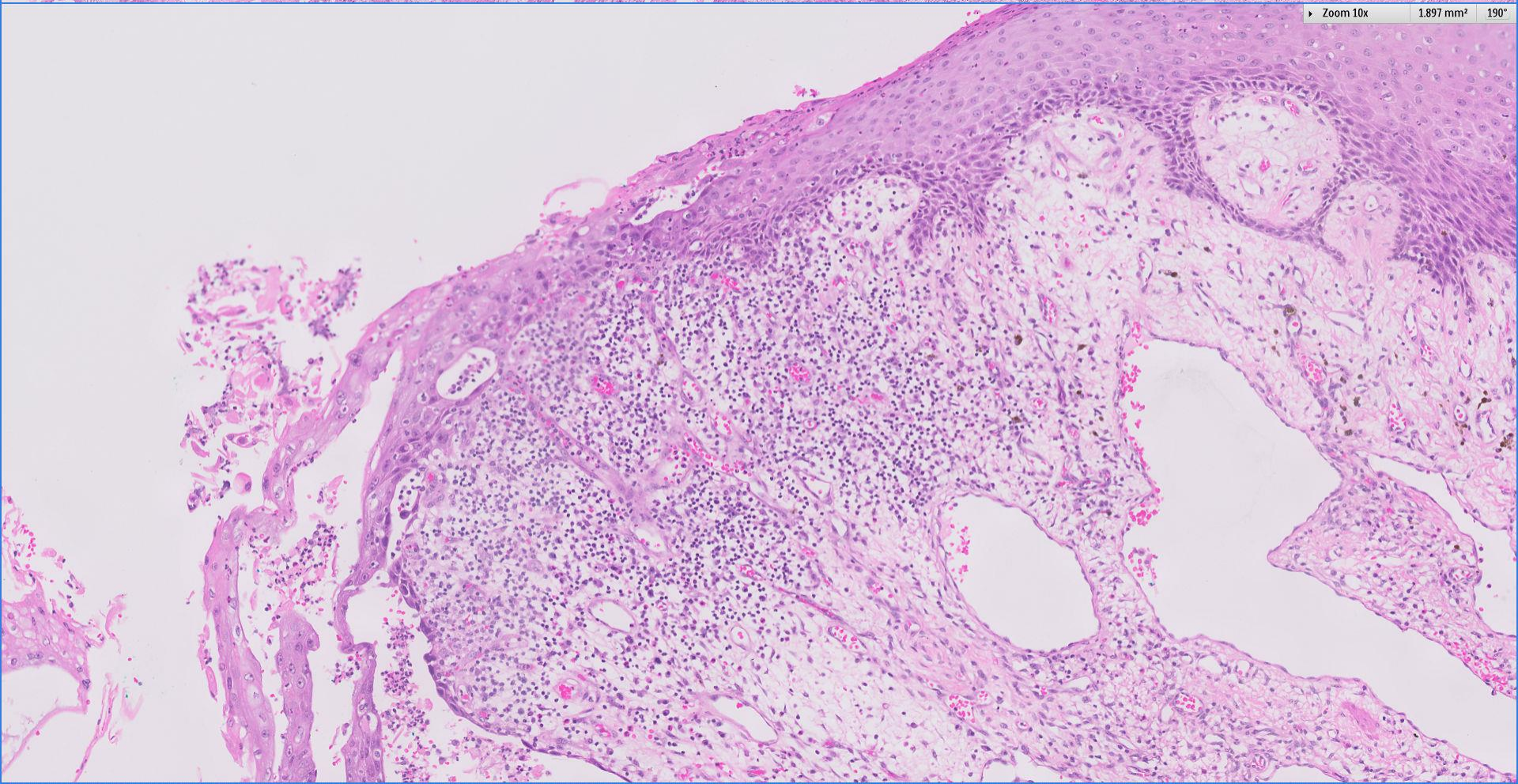
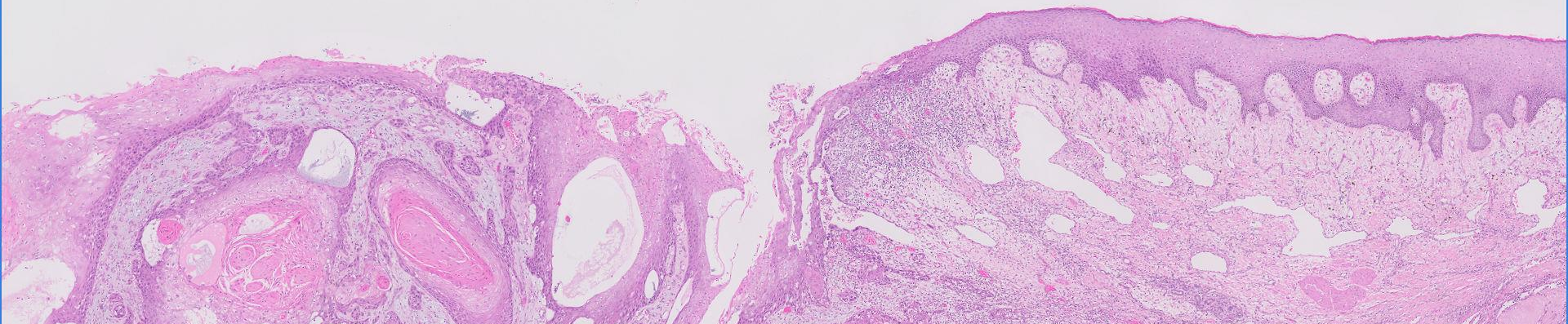


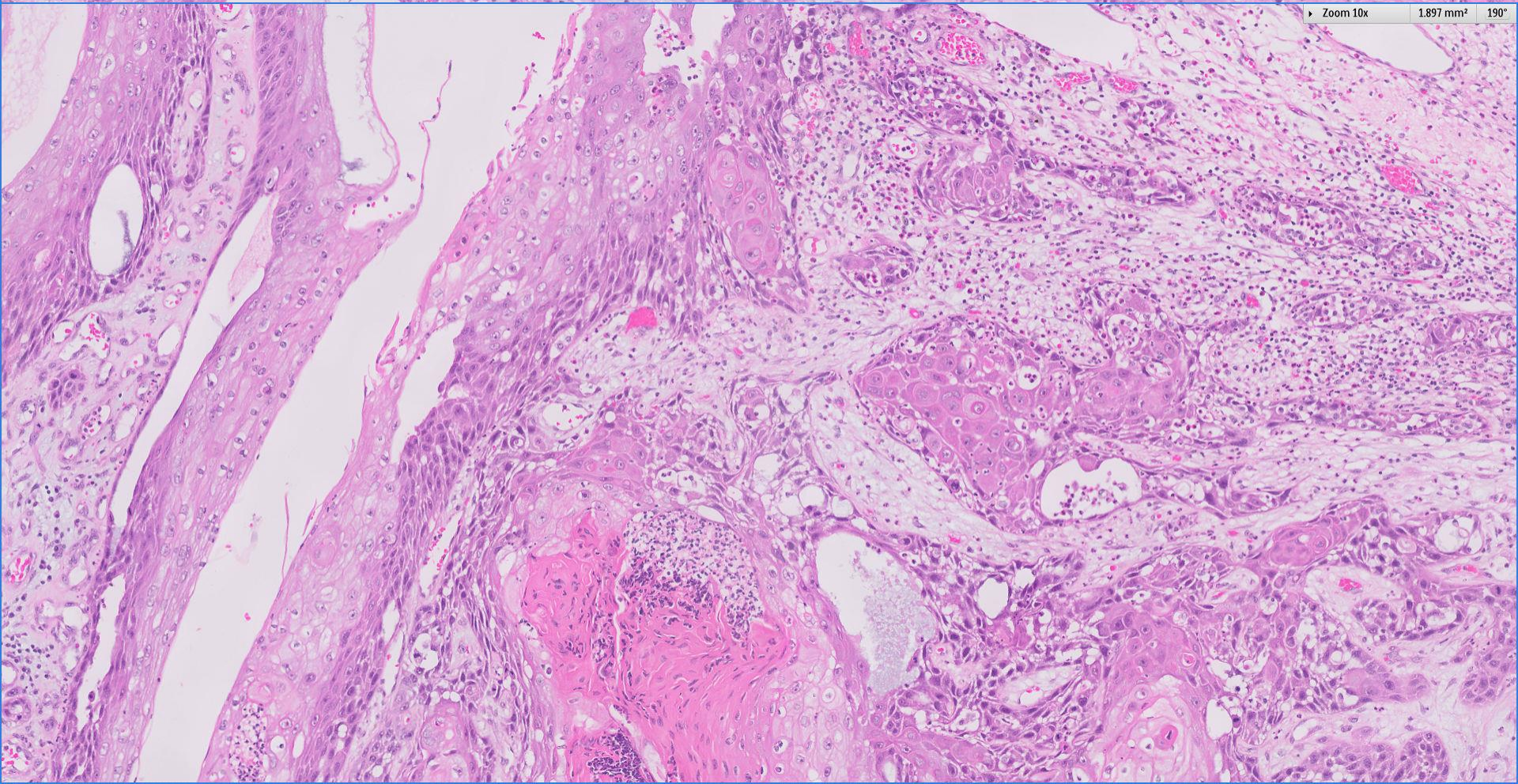
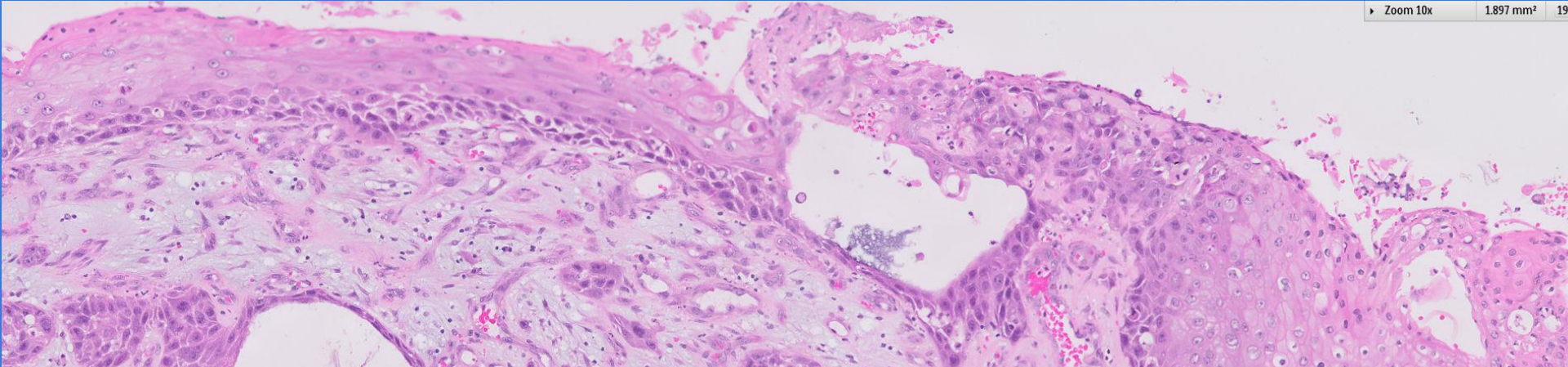
Previous core biopsy (6 months prior to mastectomy)

- Diagnosed as invasive carcinoma with metaplastic features, triple negative.
- Treated with neoadjuvant chemotherapy.

Current mastectomy





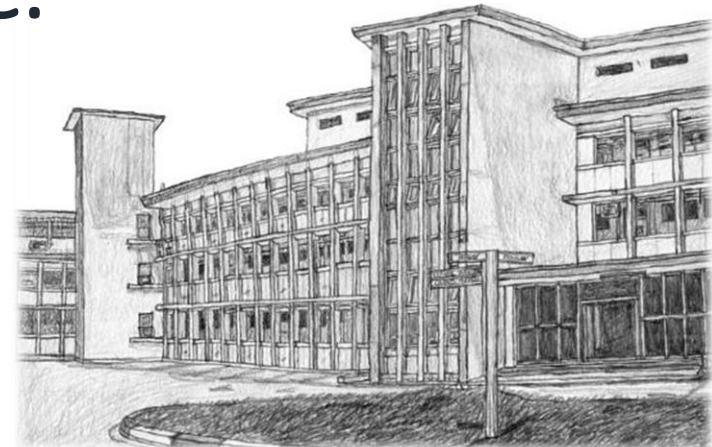


Diagnosis

Right breast mastectomy ~

Moderately differentiated squamous cell
carcinoma, 5cm.

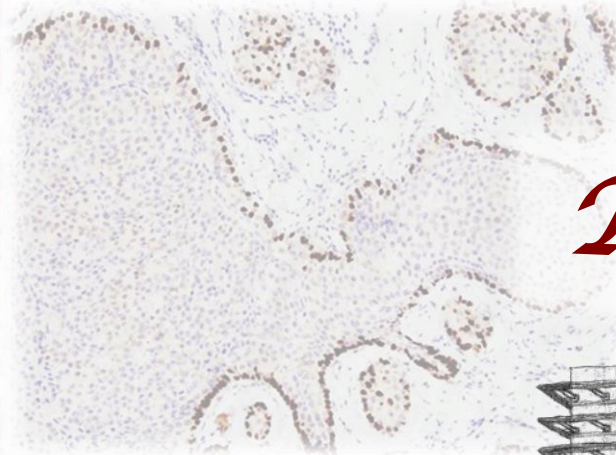
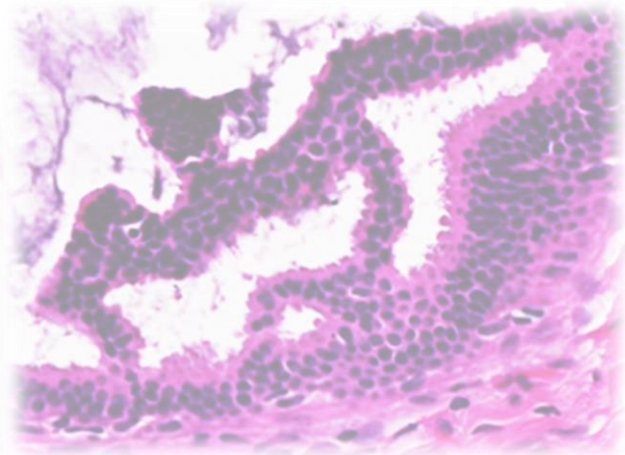
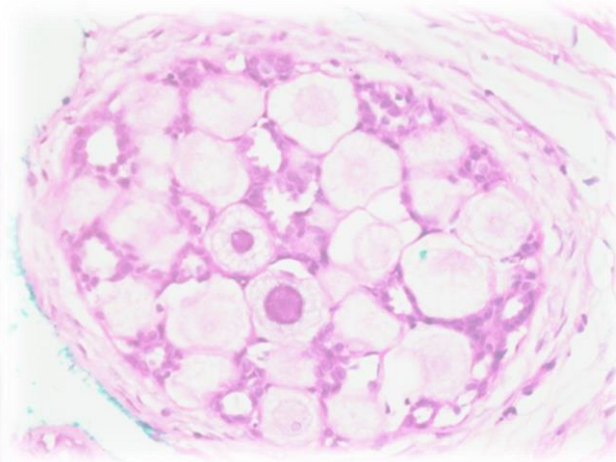
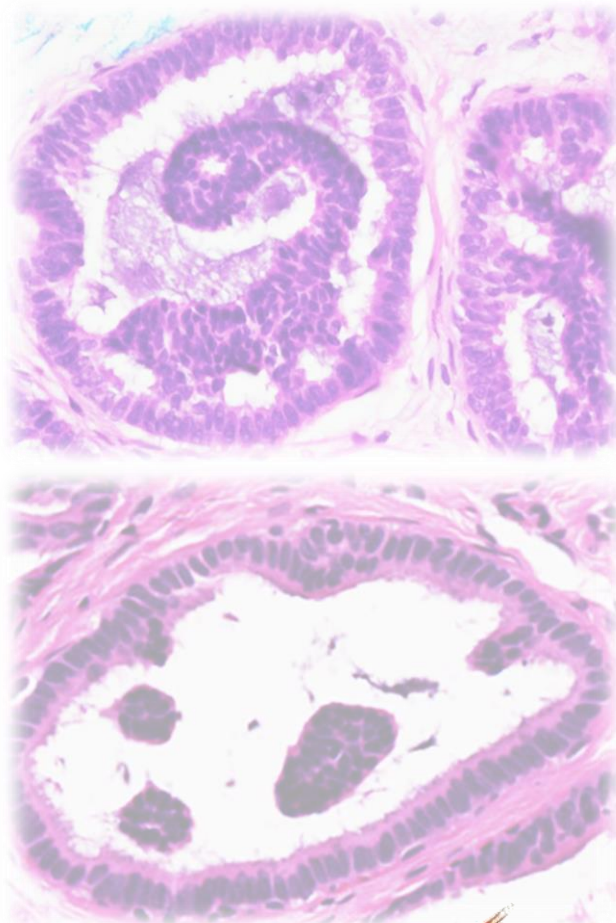
Triple negative.



Squamous cell carcinoma of the breast

- Regarded as a form of metaplastic carcinoma.
- Term used when >90% of the tumour displays keratinising squamous differentiation.
- Centred in the breast parenchyma.
- May involve the skin secondarily.
- Metastasis from squamous carcinoma originating from an extramammary site needs to be excluded.

 Breast
Pathology
Course 2018



Thank you!

