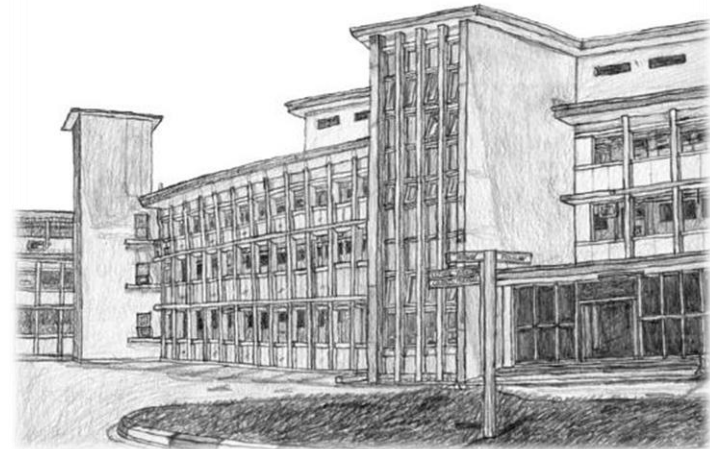
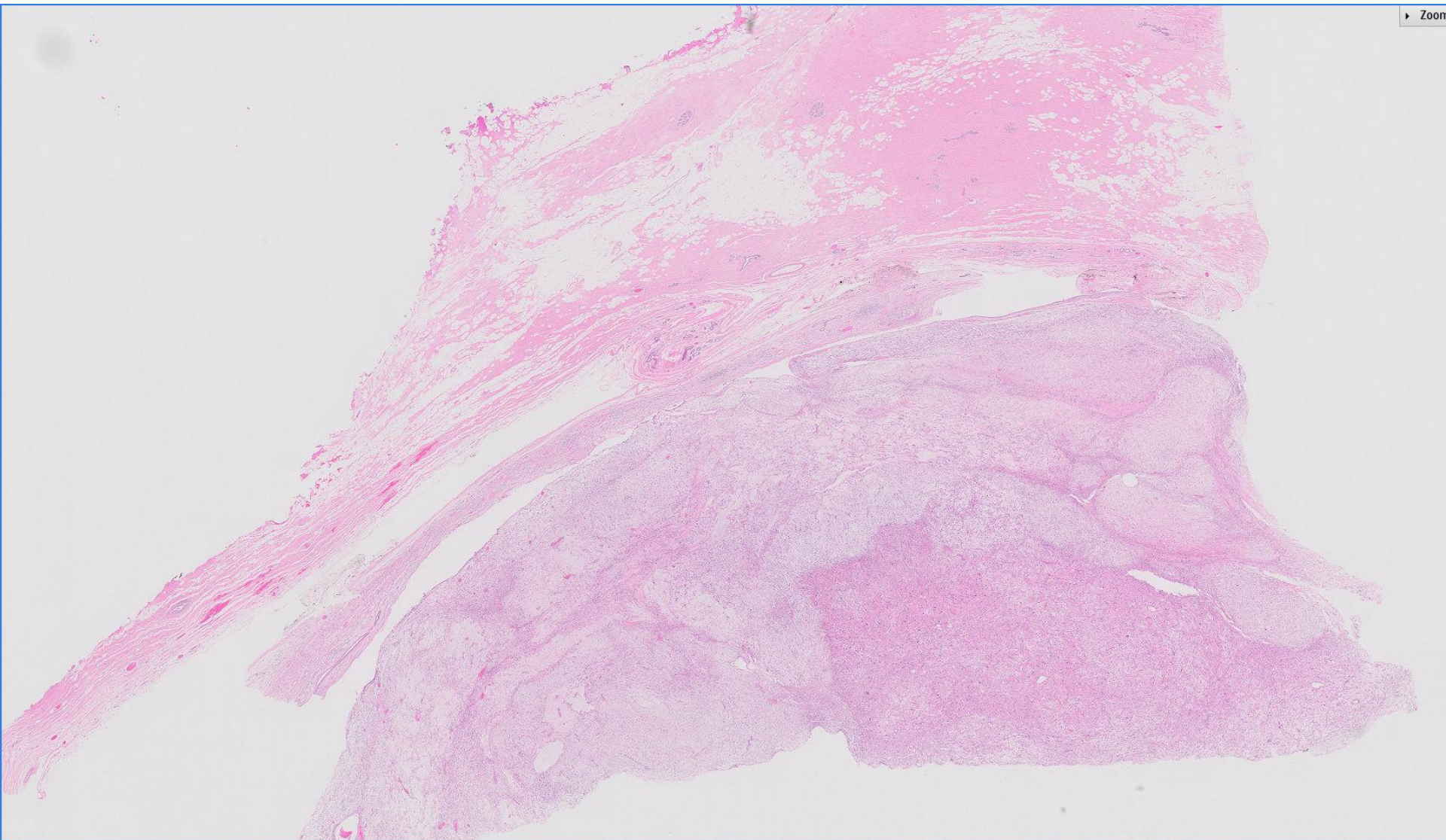


Case 22

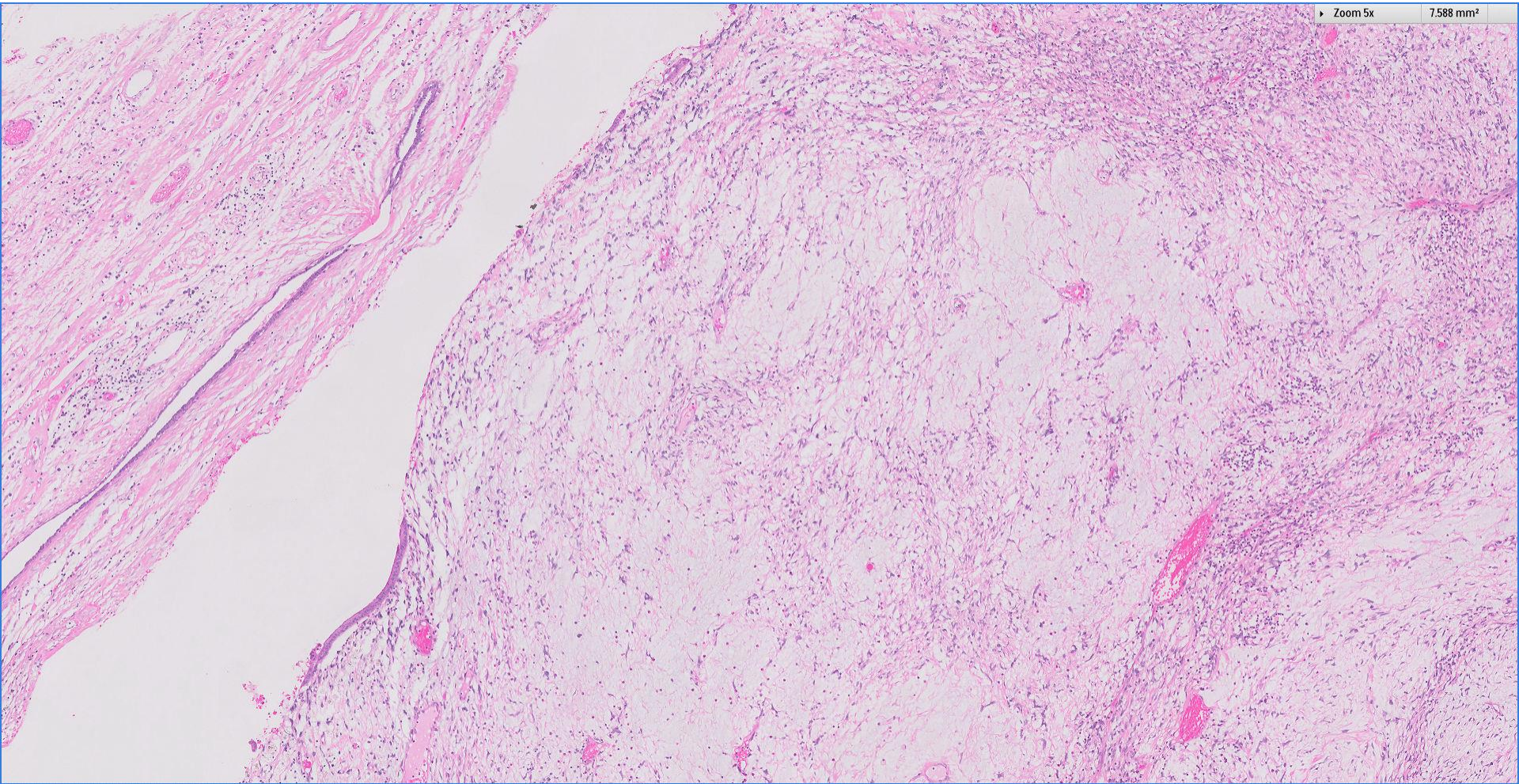
58 year old female.
Left breast tumour.





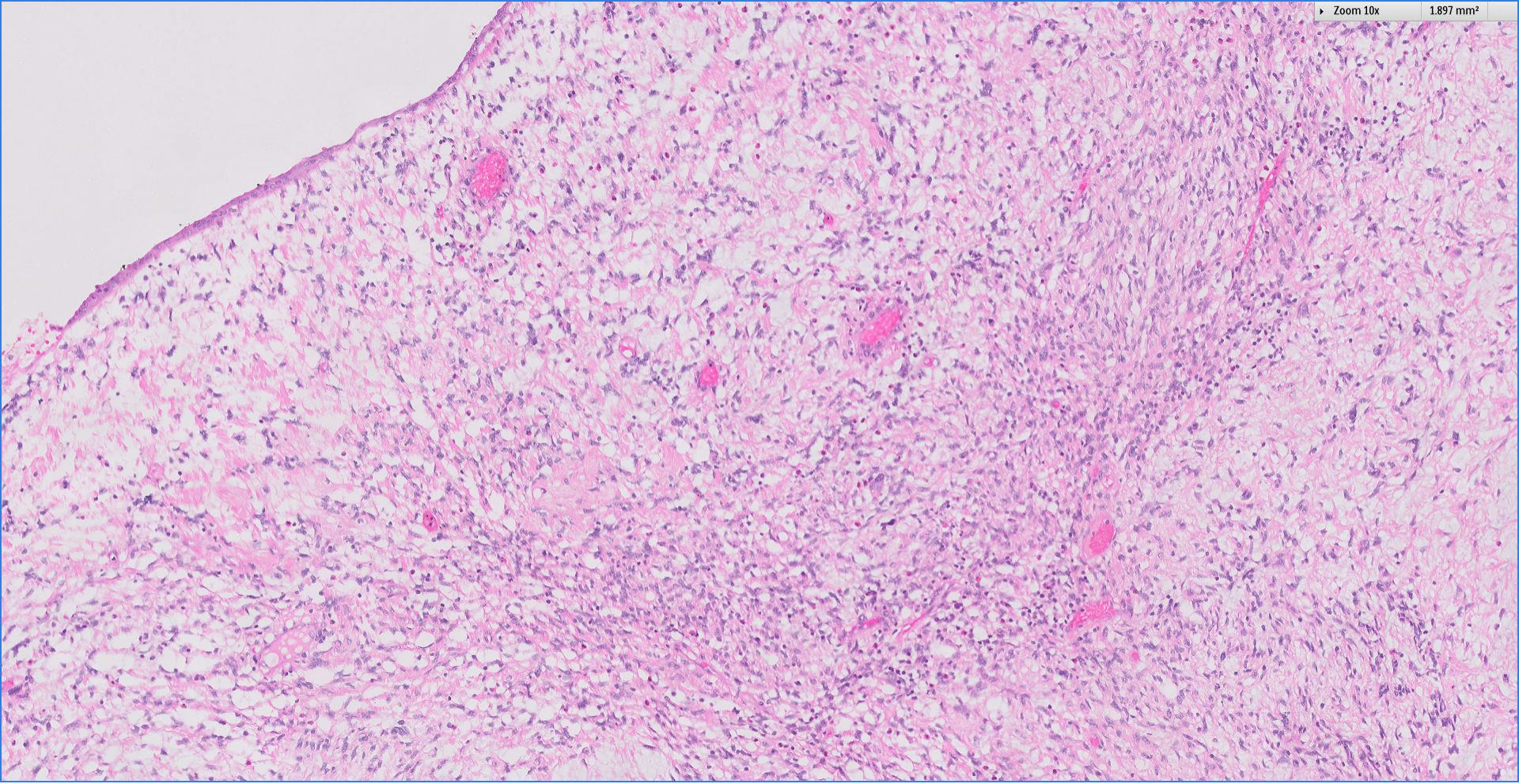
► Zoom 5x

7.588 mm²



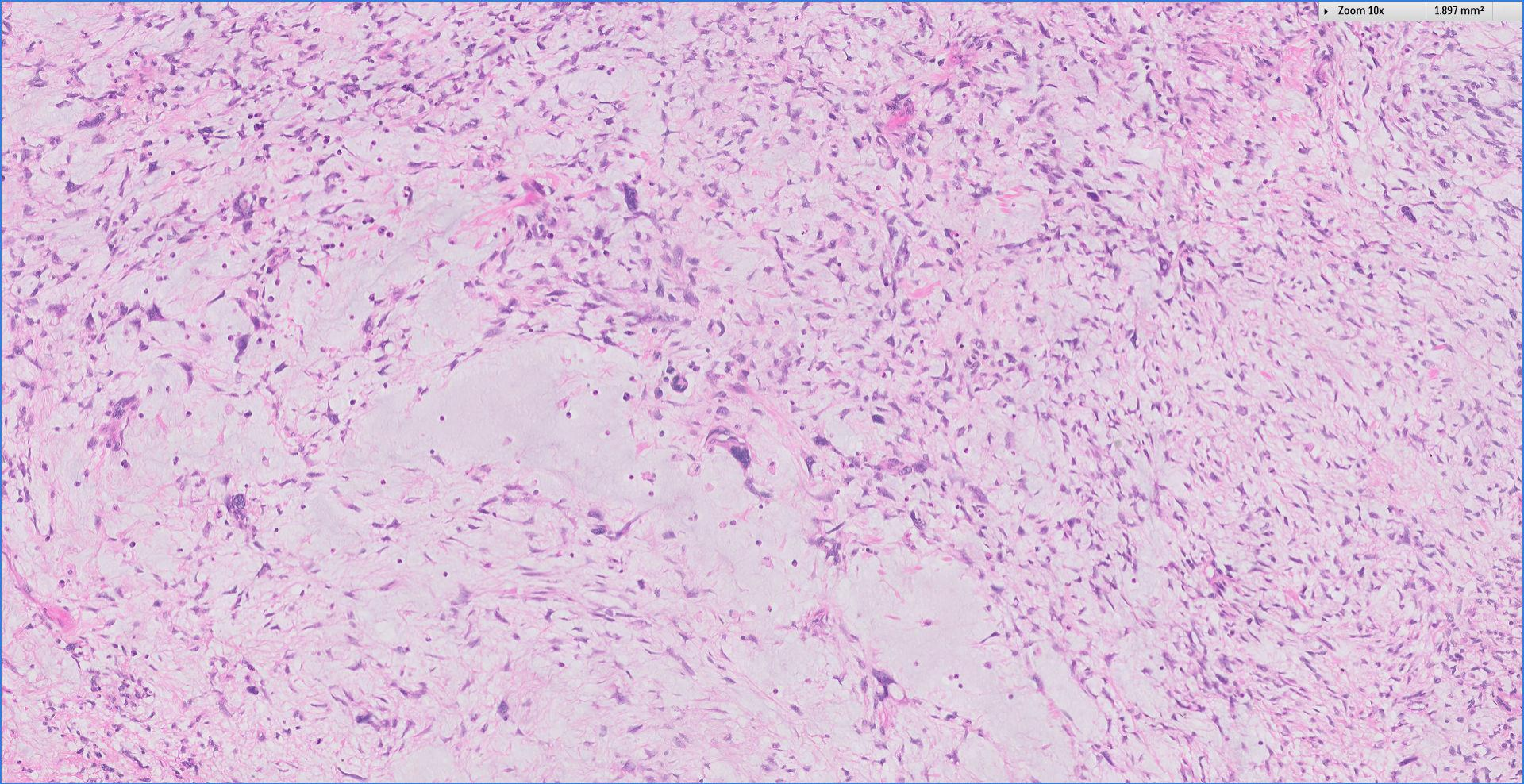
Zoom 10x

1.897 mm²



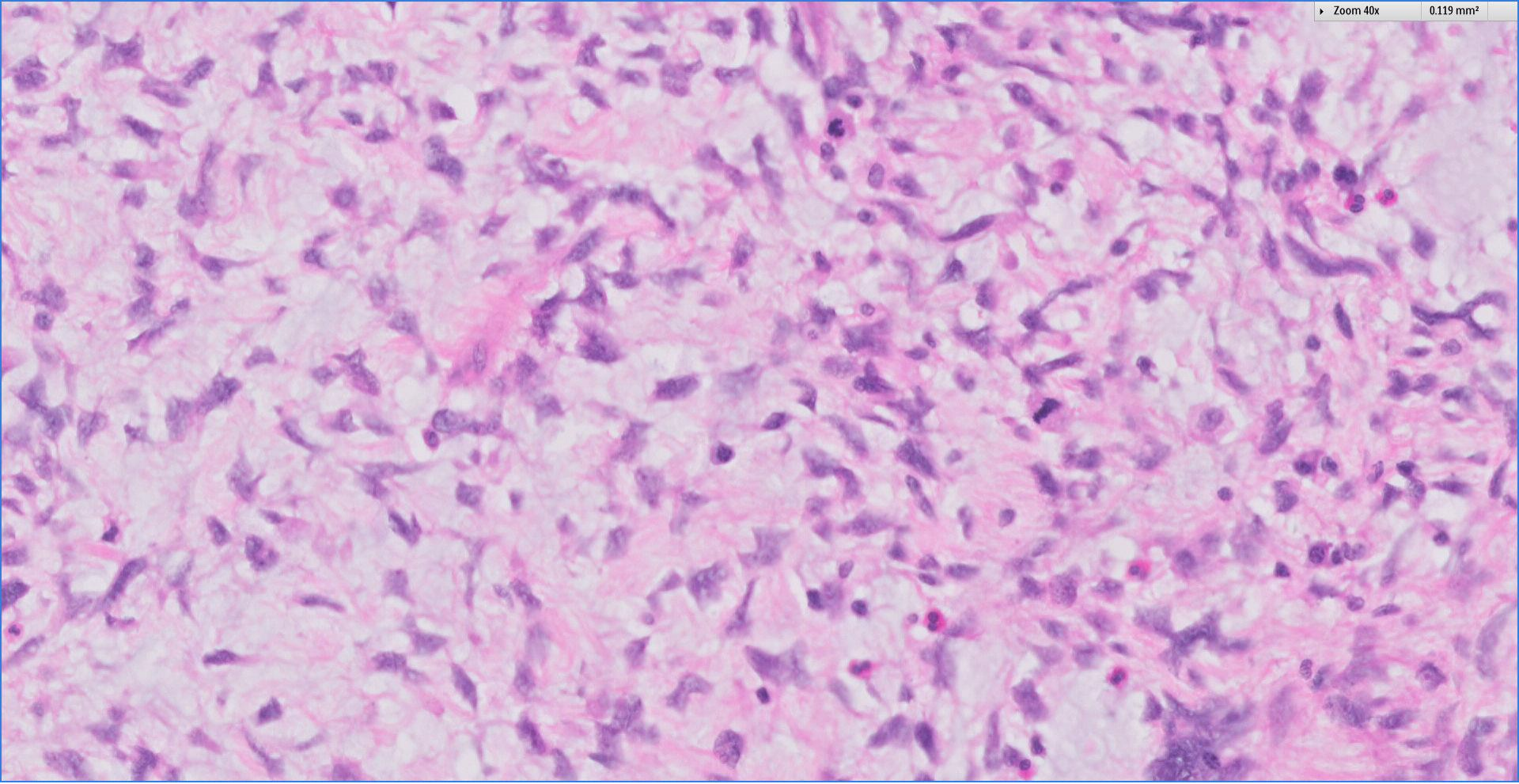
Zoom 10x

1.897 mm²

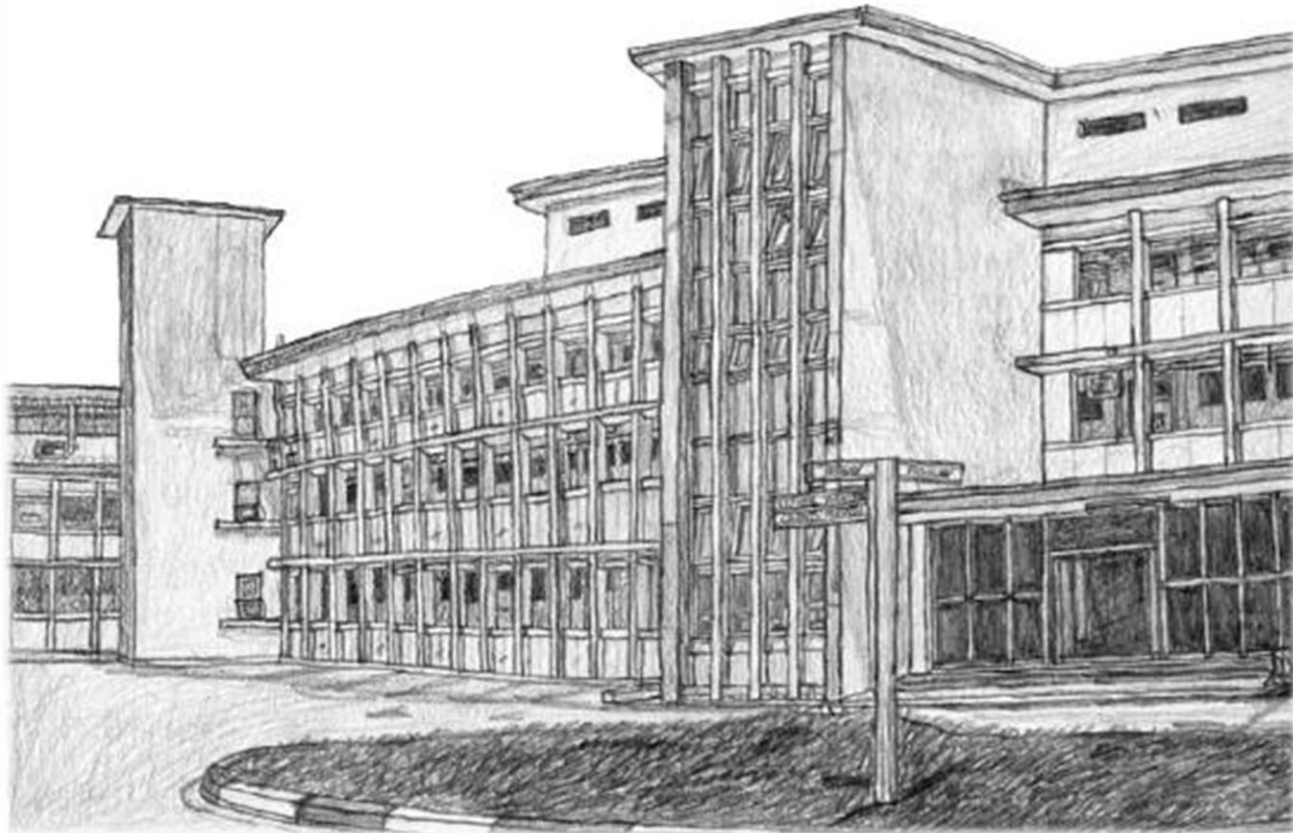


Zoom 40x

0.119 mm²

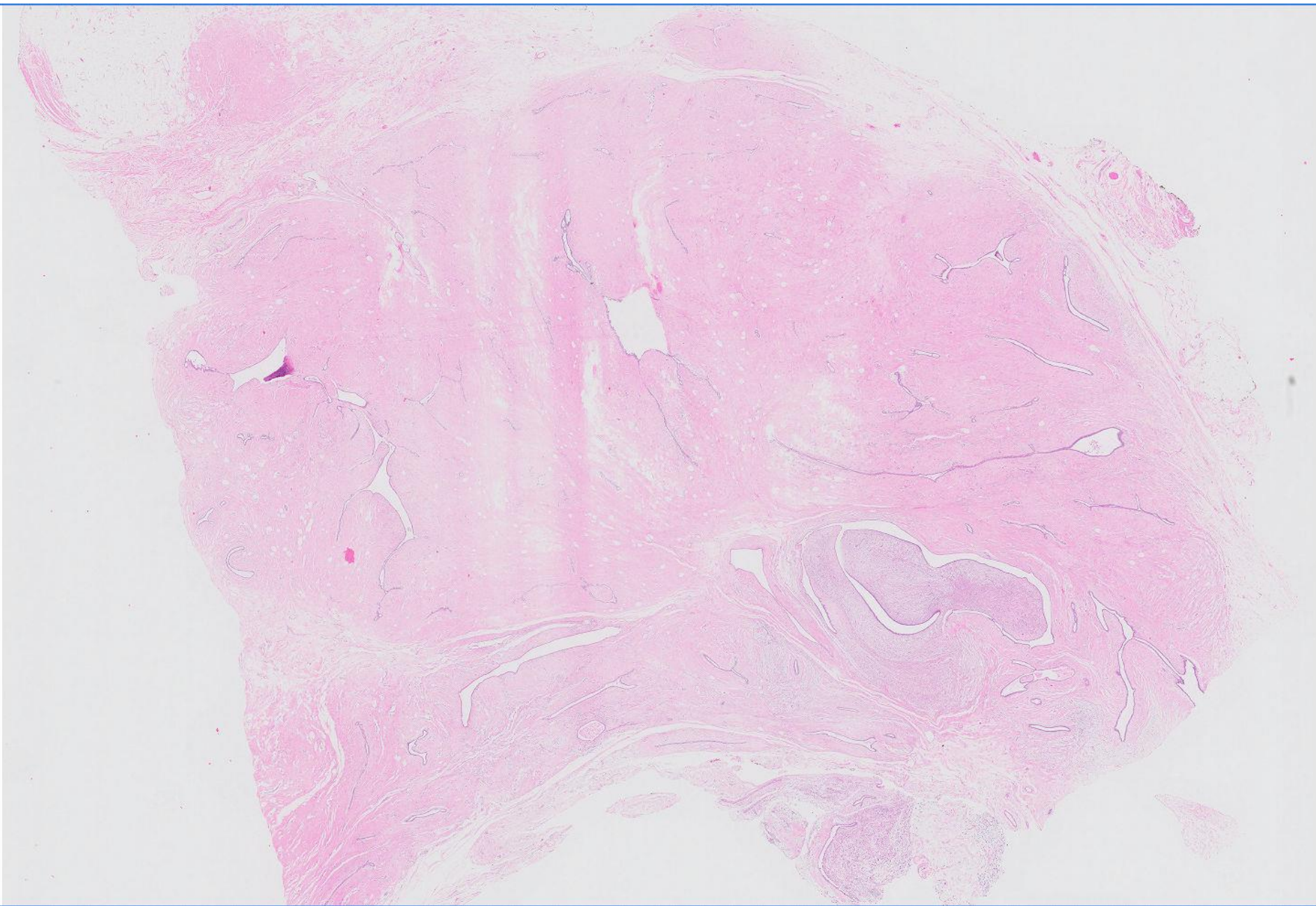


 Breast
Pathology
Course 2018



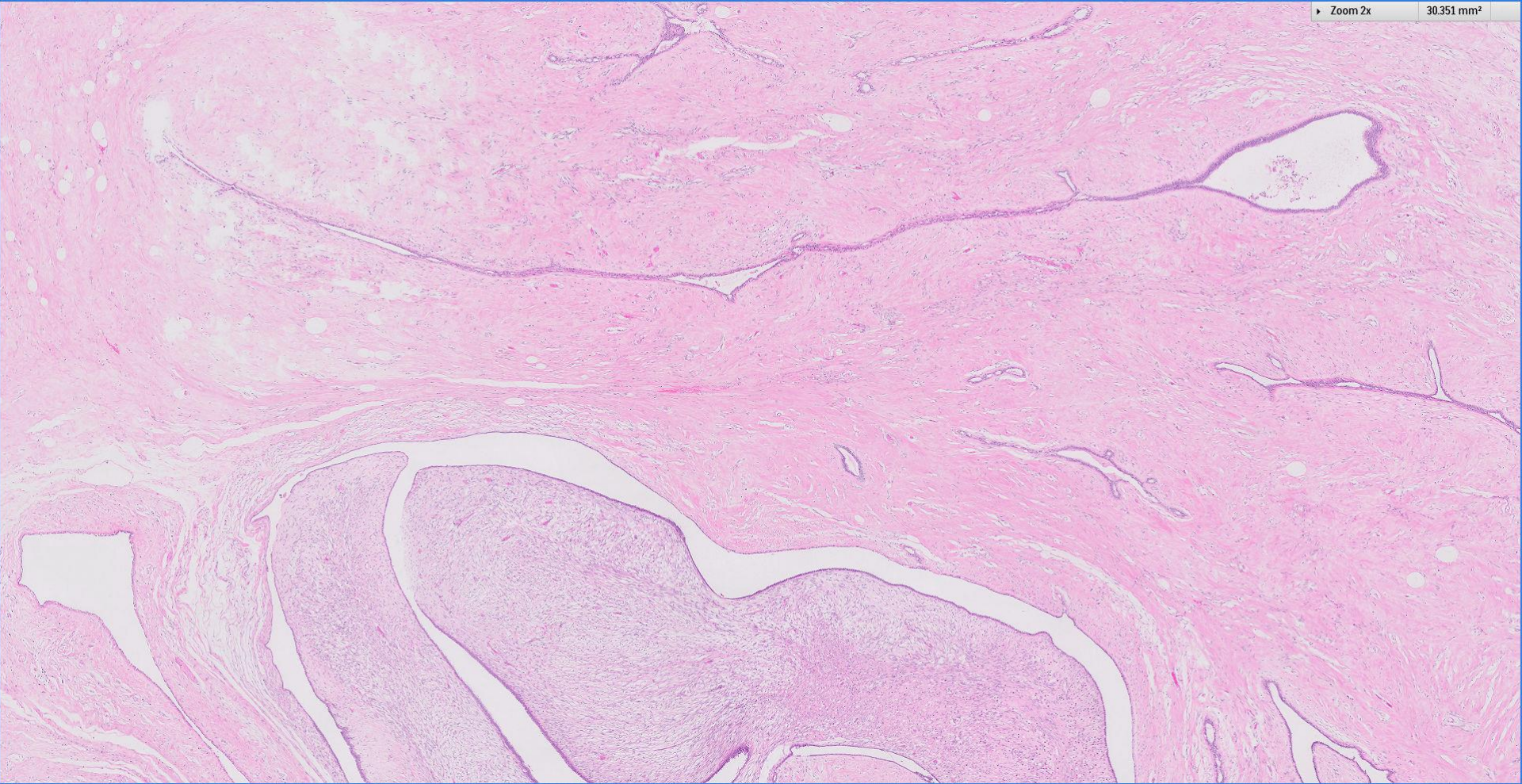
Singapore
General Hospital
SingHealth
Division of Pathology





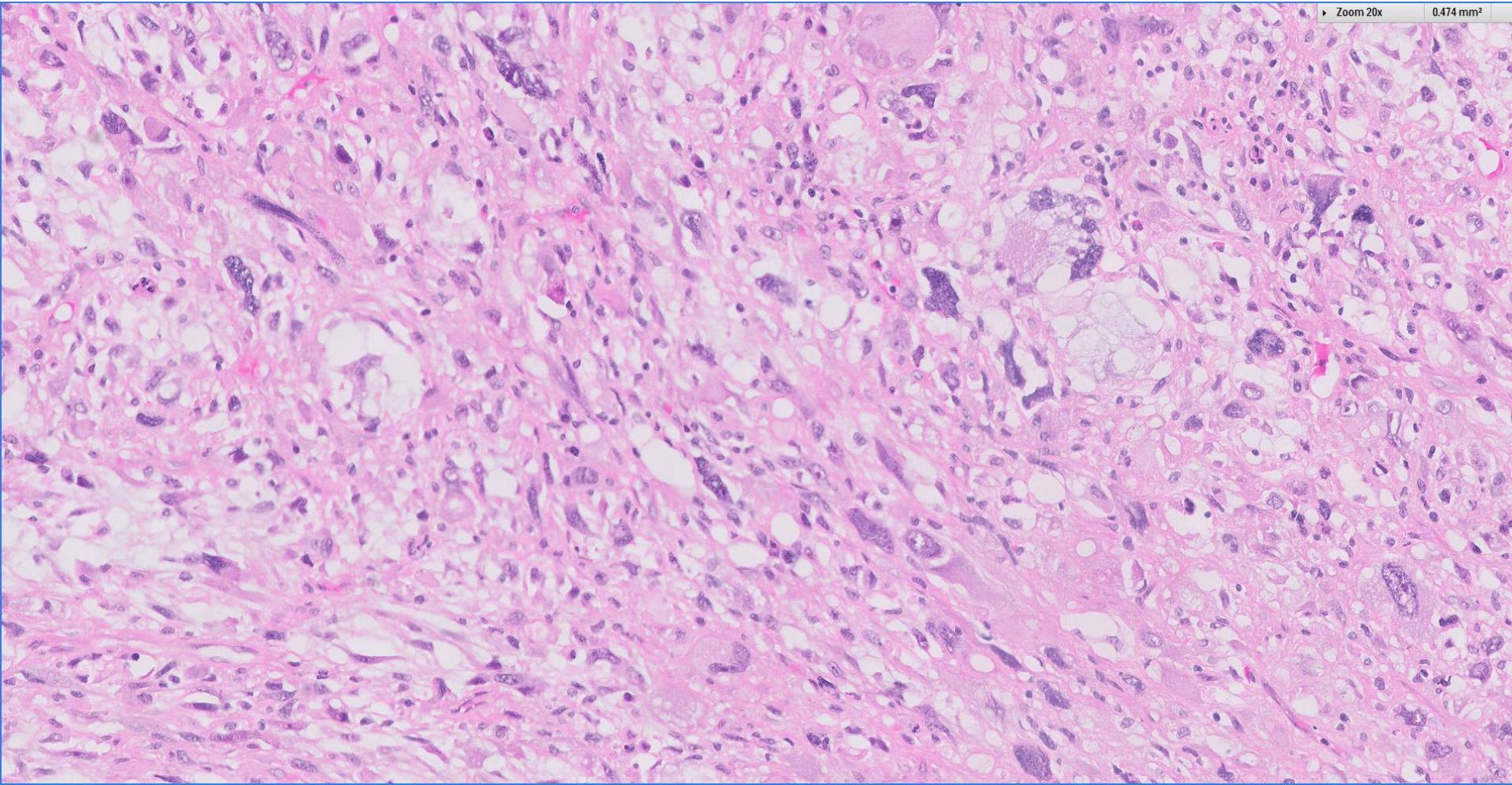
Zoom 2x

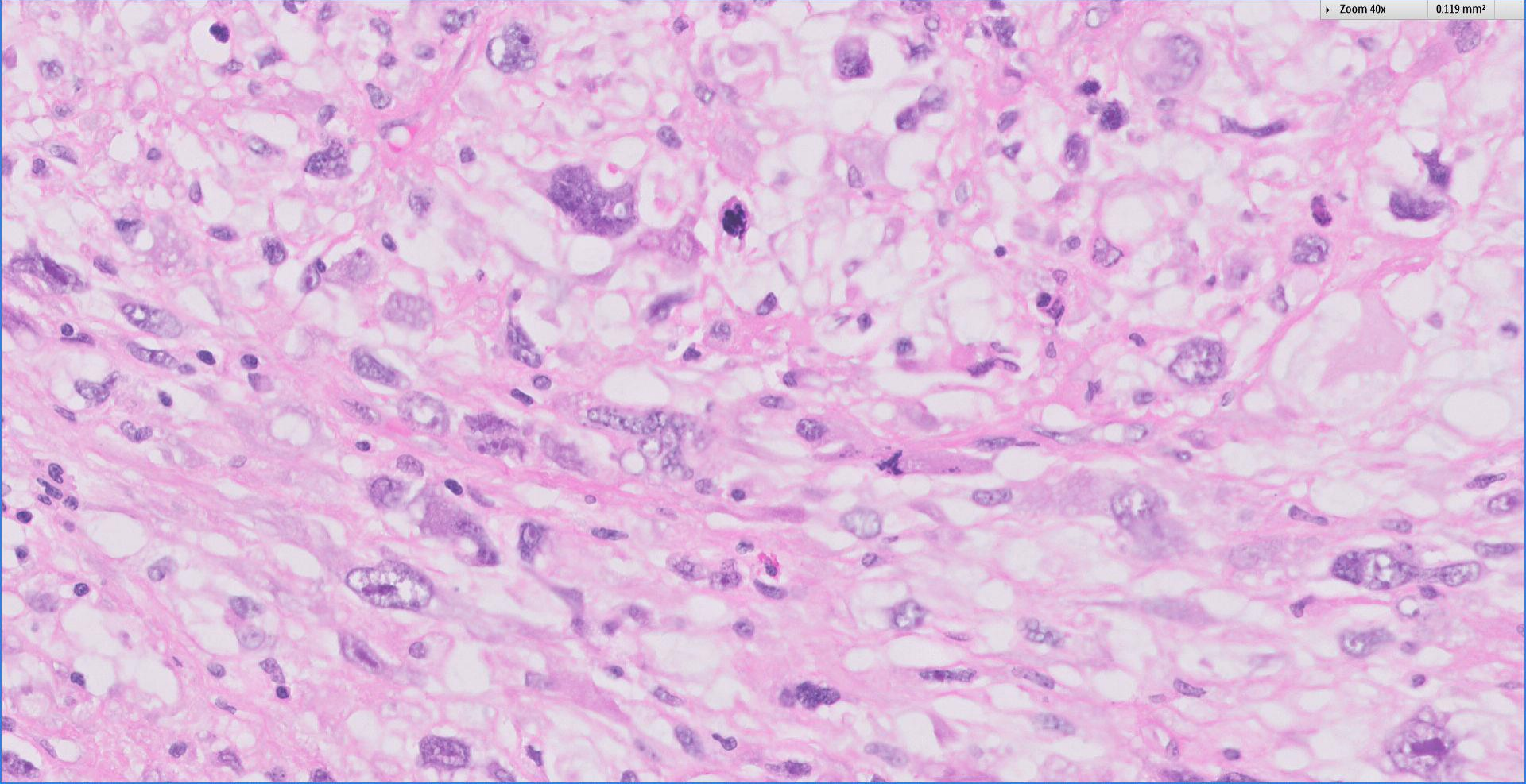
30.351 mm²



Zoom 20x

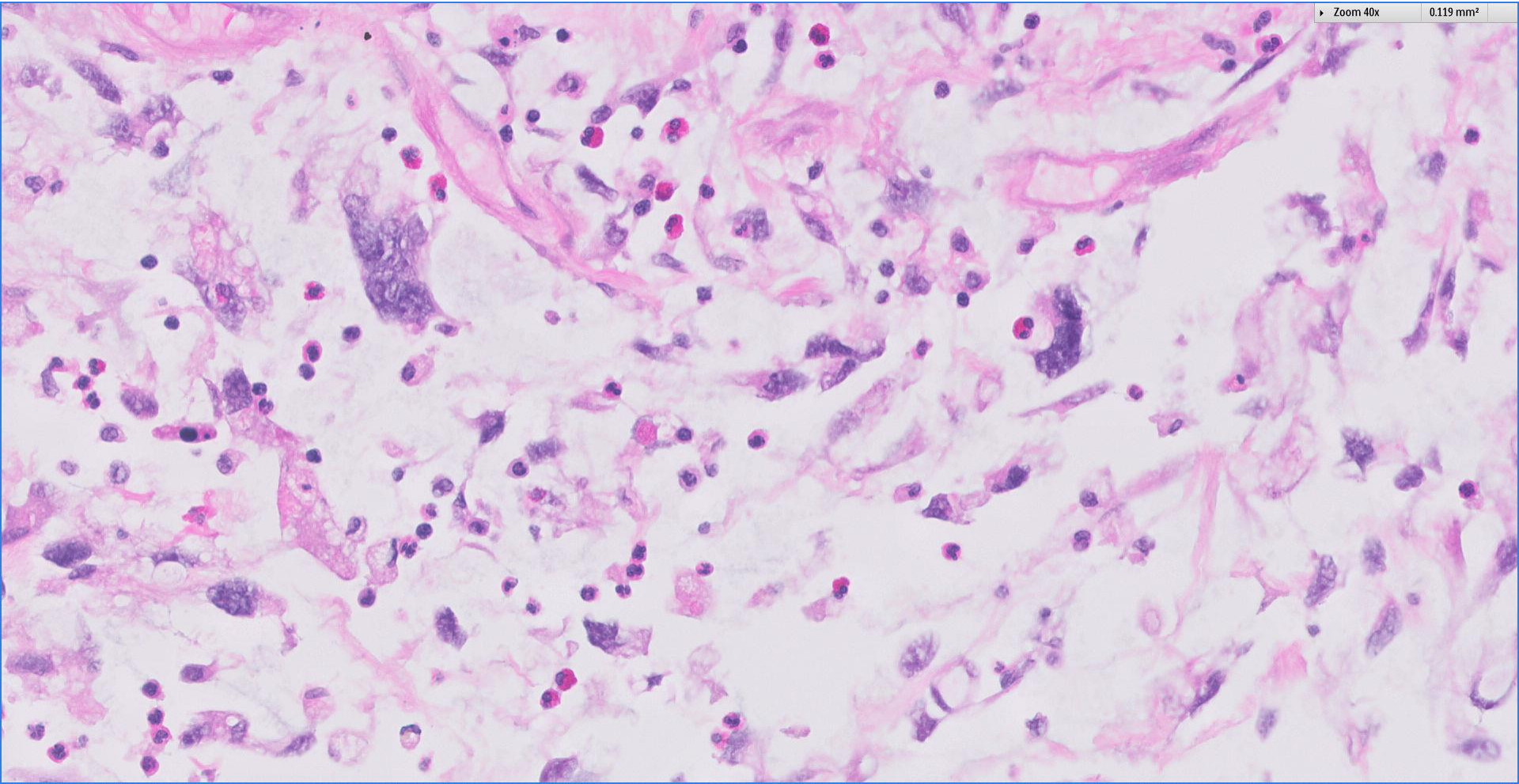
0.474 mm²





Zoom 40x

0.119 mm²



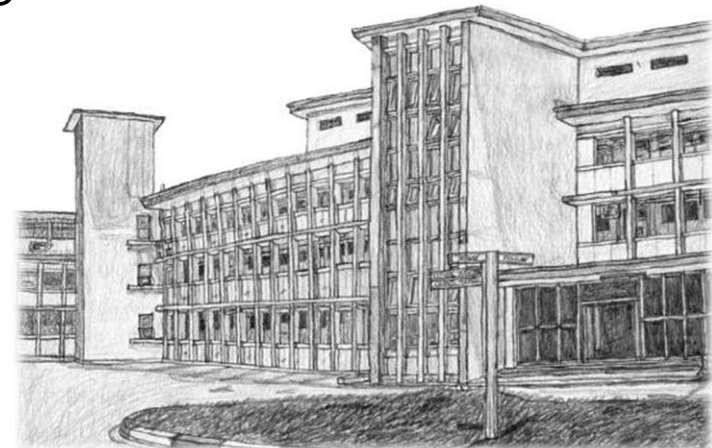
Diagnosis

Malignant phyllodes tumour ~

Lipoblast-like cells.

Mitoses 5-7 per 10 high power fields.

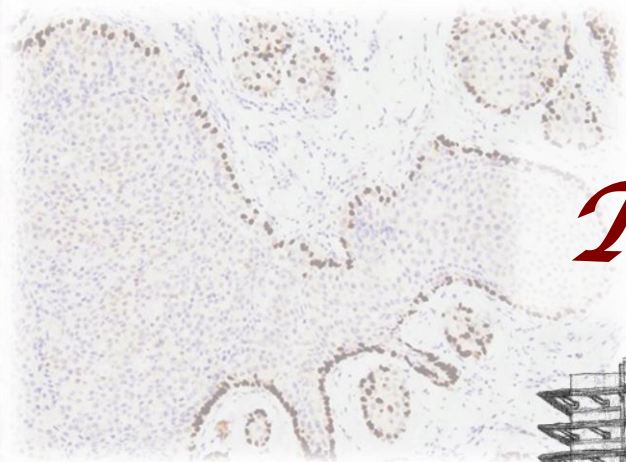
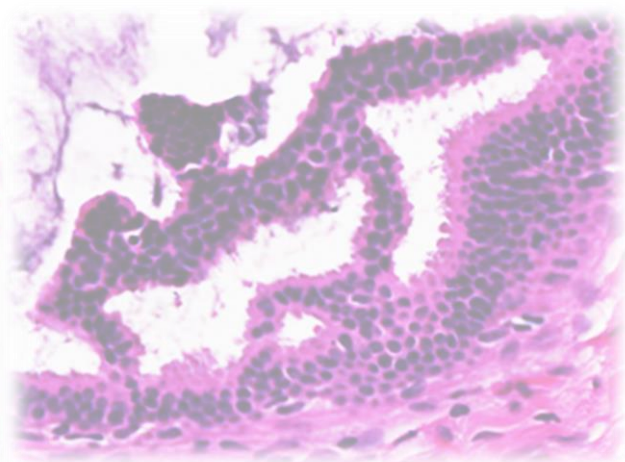
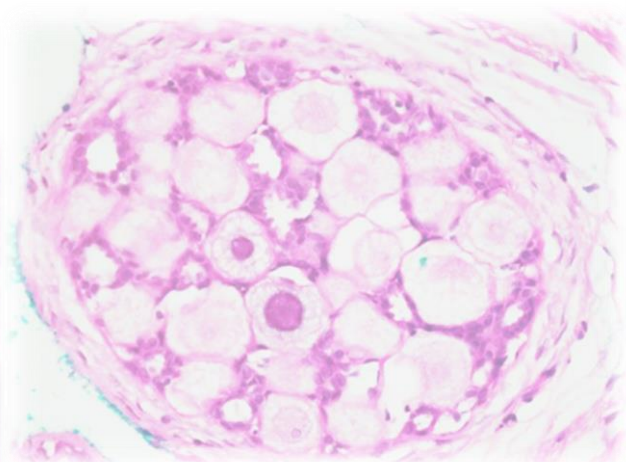
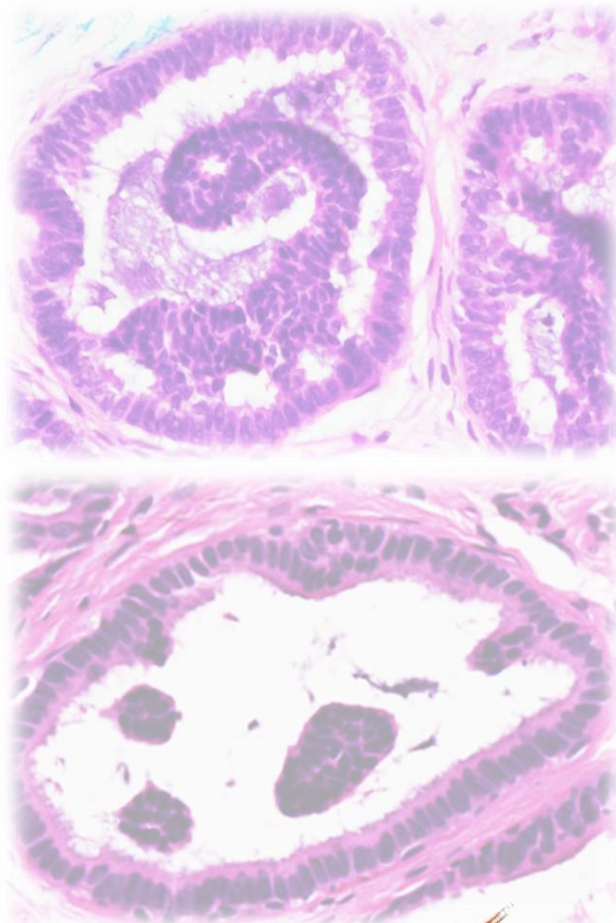
Extensive stromal overgrowth.



Malignant phyllodes tumour

- Diagnosis based on histological features ~
 - Marked nuclear pleomorphism of stromal cells,
 - Stromal overgrowth defined as absence of epithelial elements in one low-power microscopic field containing only stroma,
 - Increased mitoses (≥ 10 per 10 HPF),
 - Increased stromal cellularity which is usually diffuse, and
 - Infiltrative borders, OR
 - Presence of malignant heterologous elements
(liposarcoma is currently being debated as to whether it qualifies as the sole criterion for malignant grade in the absence of other supportive histological features)

 Breast
Pathology
Course 2018

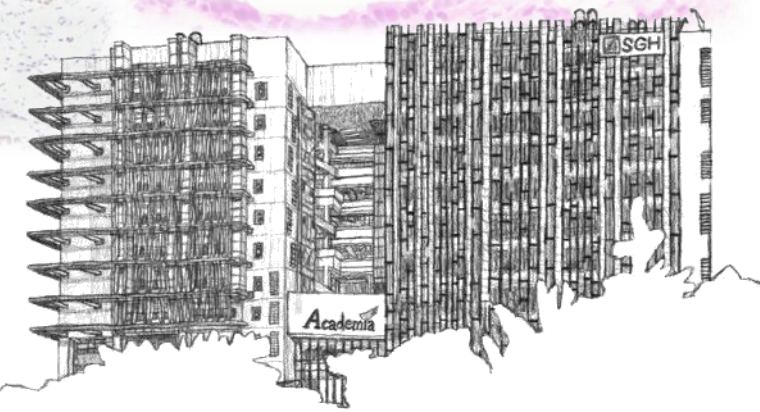


Thank you!

 Singapore
General Hospital
SingHealth
Division of Pathology

 SingHealth DukeNUS
ACADEMIC MEDICAL CENTRE
PATHOLOGY

 IAP
International Academy of Pathology
Singapore Division



THE ACADEMIA,
SINGAPORE GENERAL HOSPITAL

09.05.2014

Handwritten signature