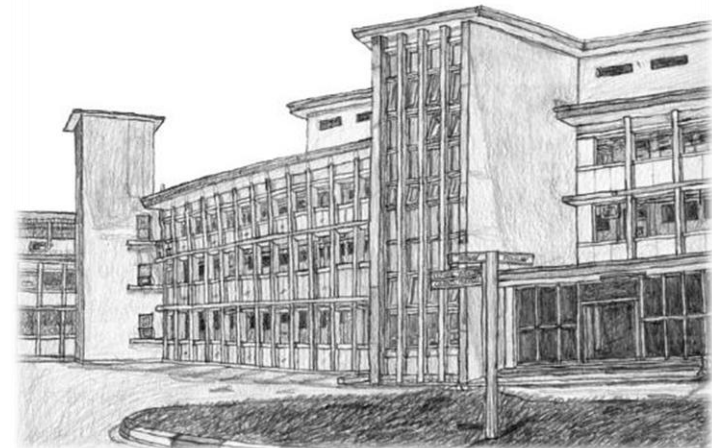


## Case 20

45 year old female.

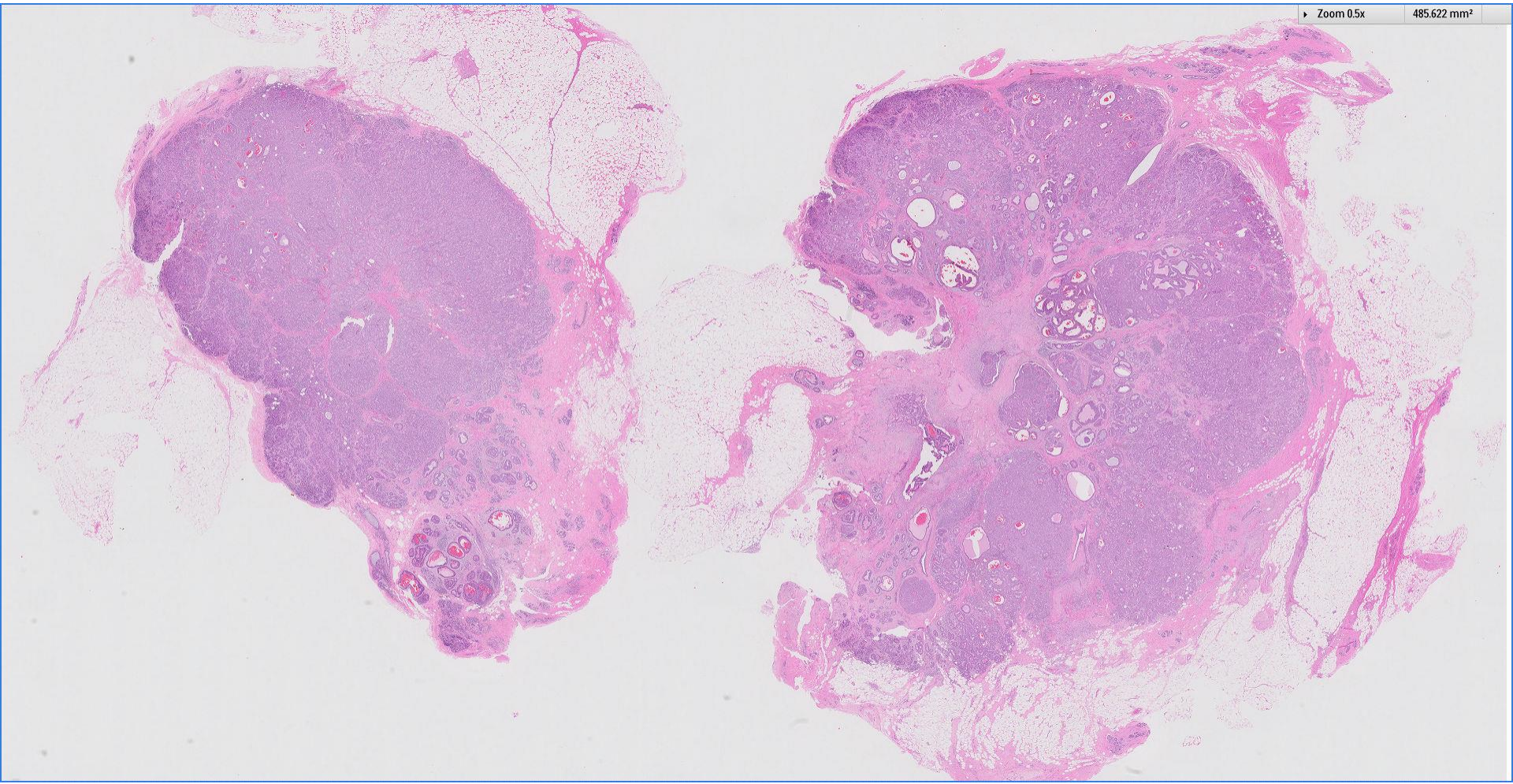
Right breast hard mass in the nipple-areolar region, 2cm.

*Case contributed by Dr Lu Kim, Vietnam*



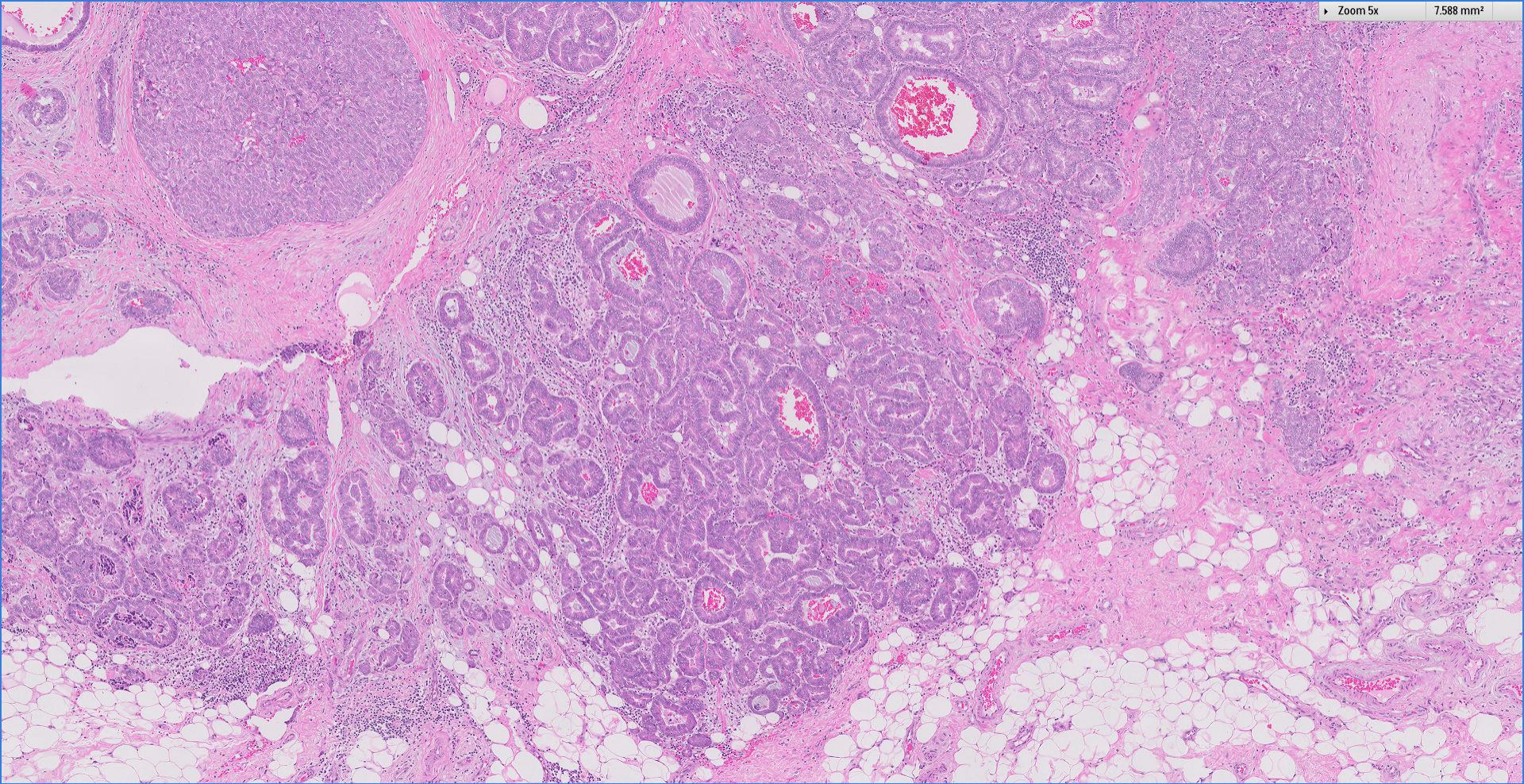
Zoom 0.5x

485.622 mm<sup>2</sup>



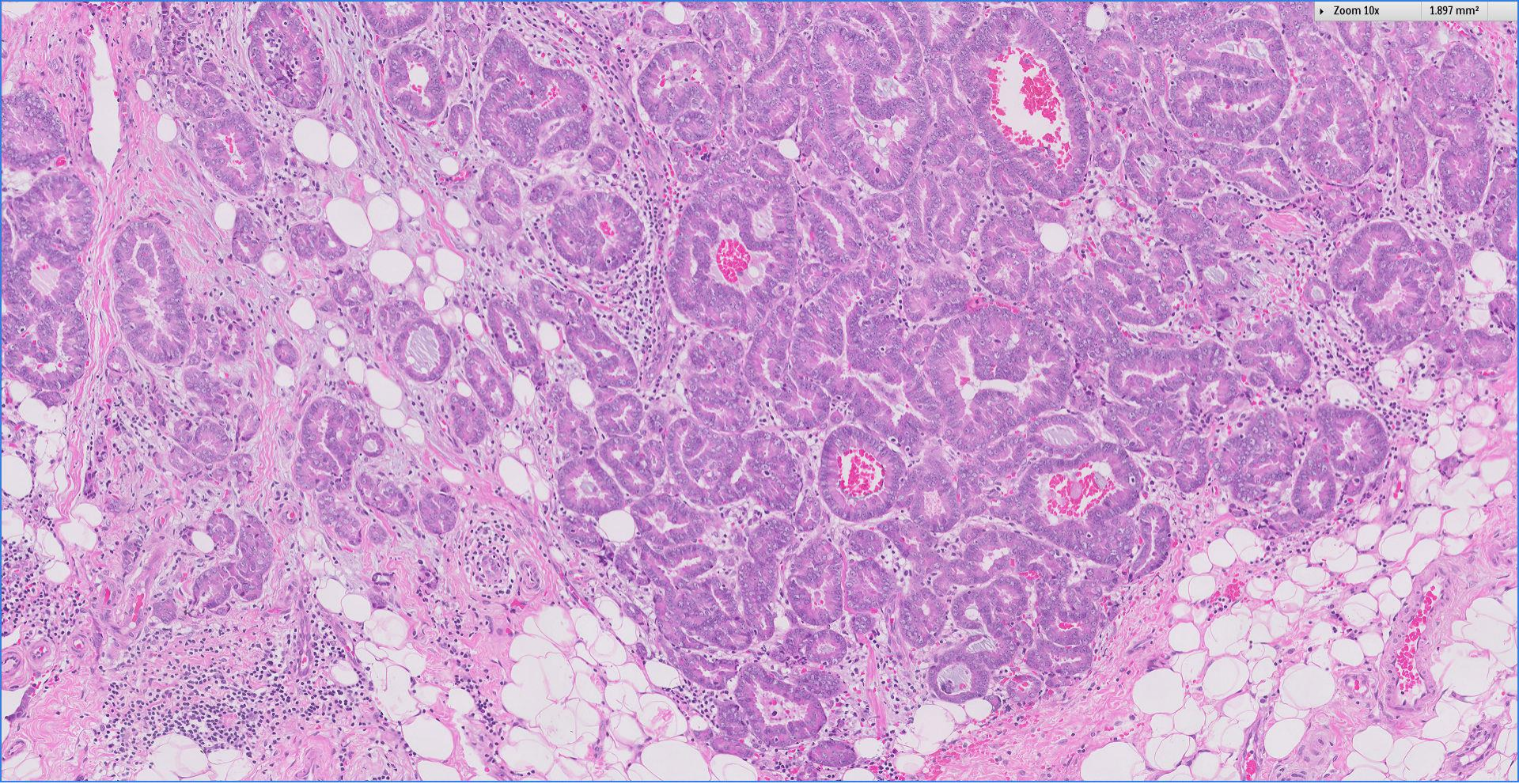
Zoom 5x

7.588 mm<sup>2</sup>



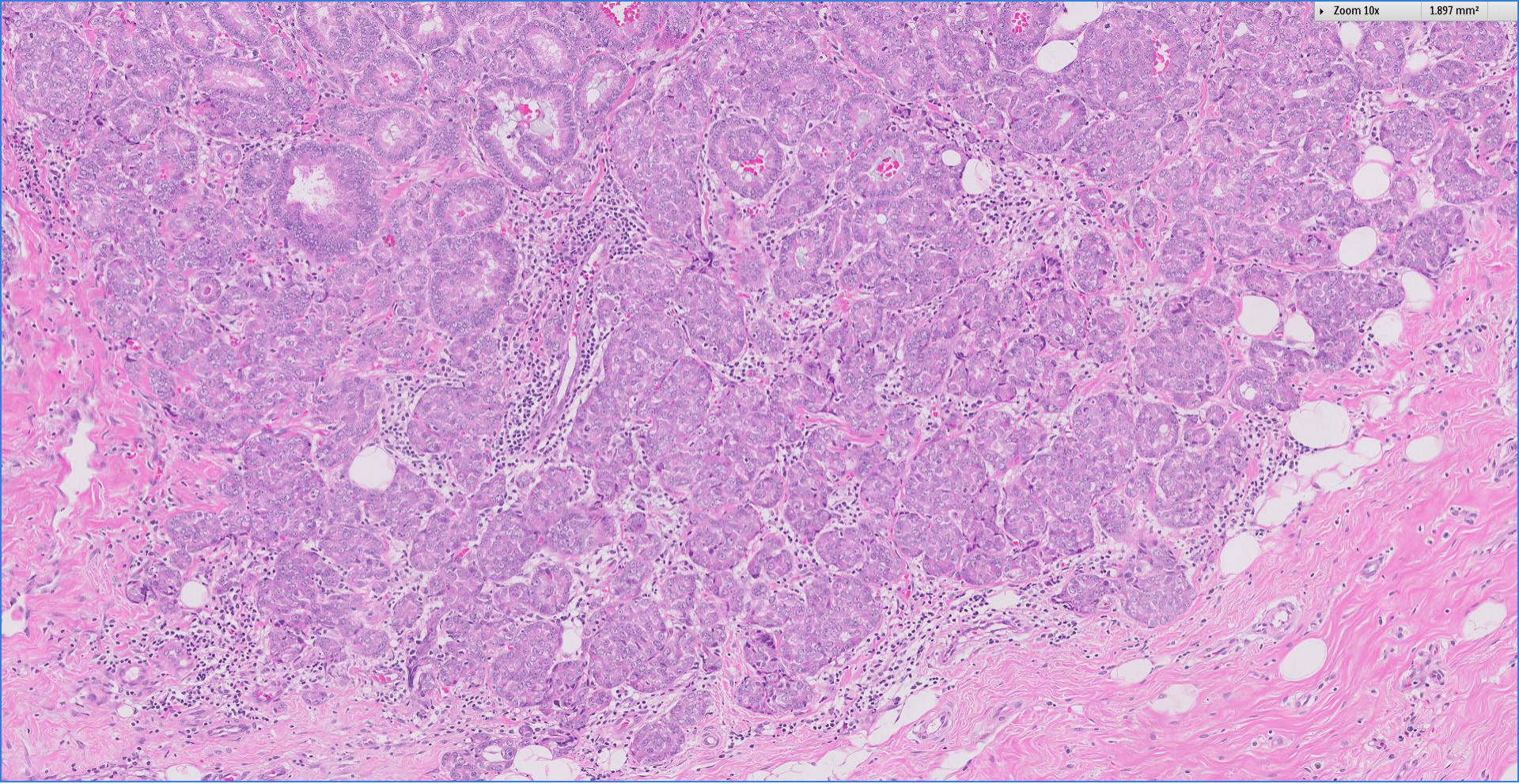
Zoom 10x

1.897 mm<sup>2</sup>



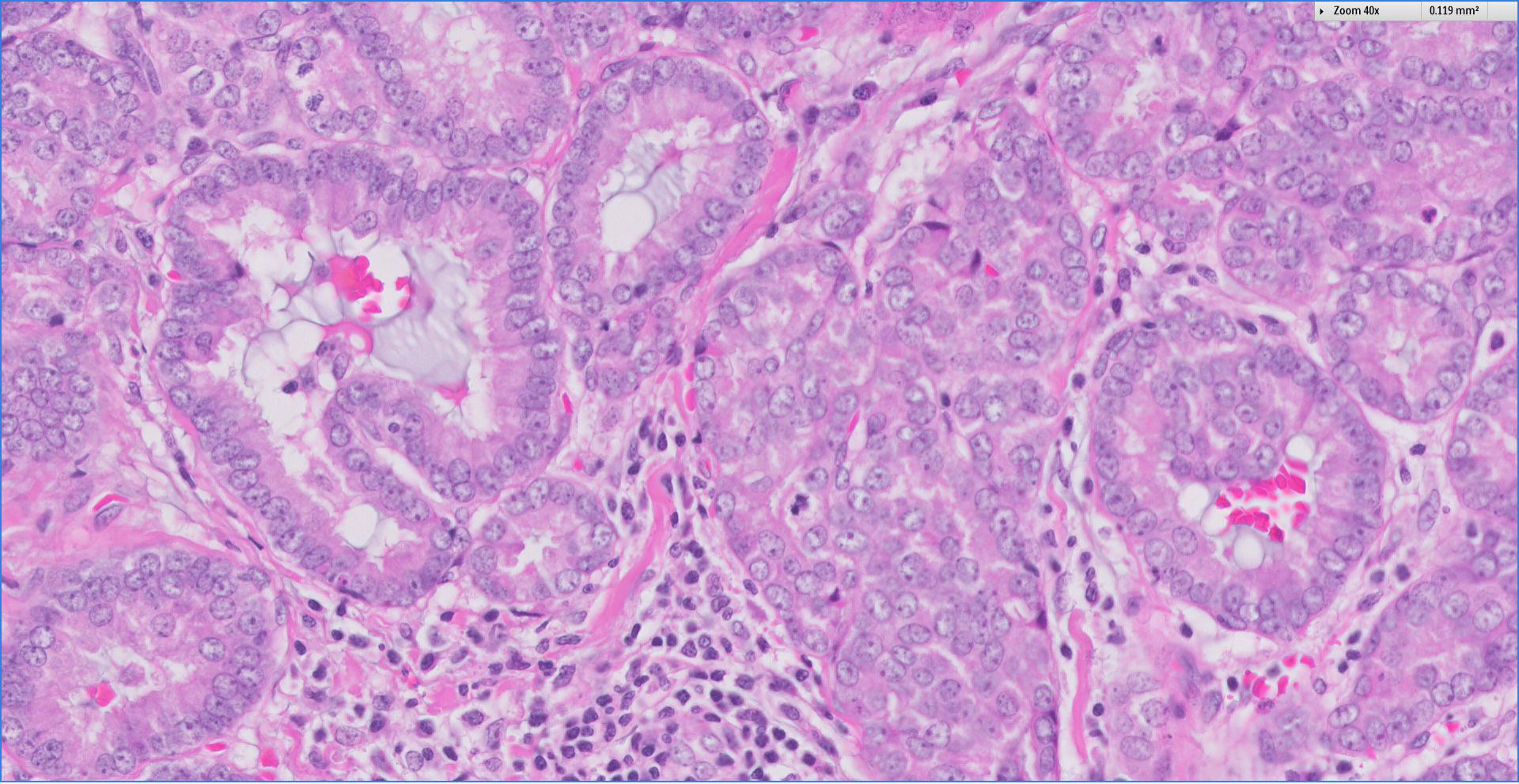
Zoom 10x

1.897 mm<sup>2</sup>

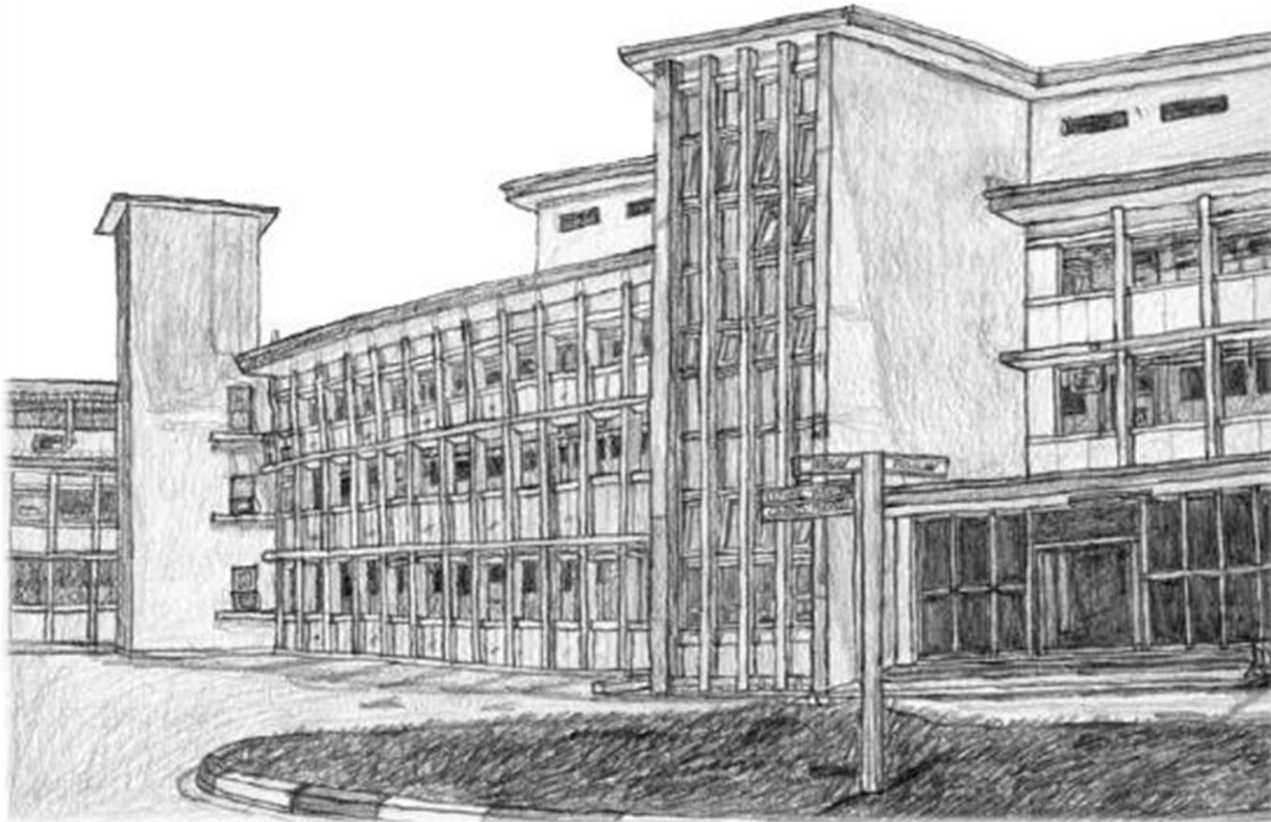


Zoom 40x

0.119 mm<sup>2</sup>



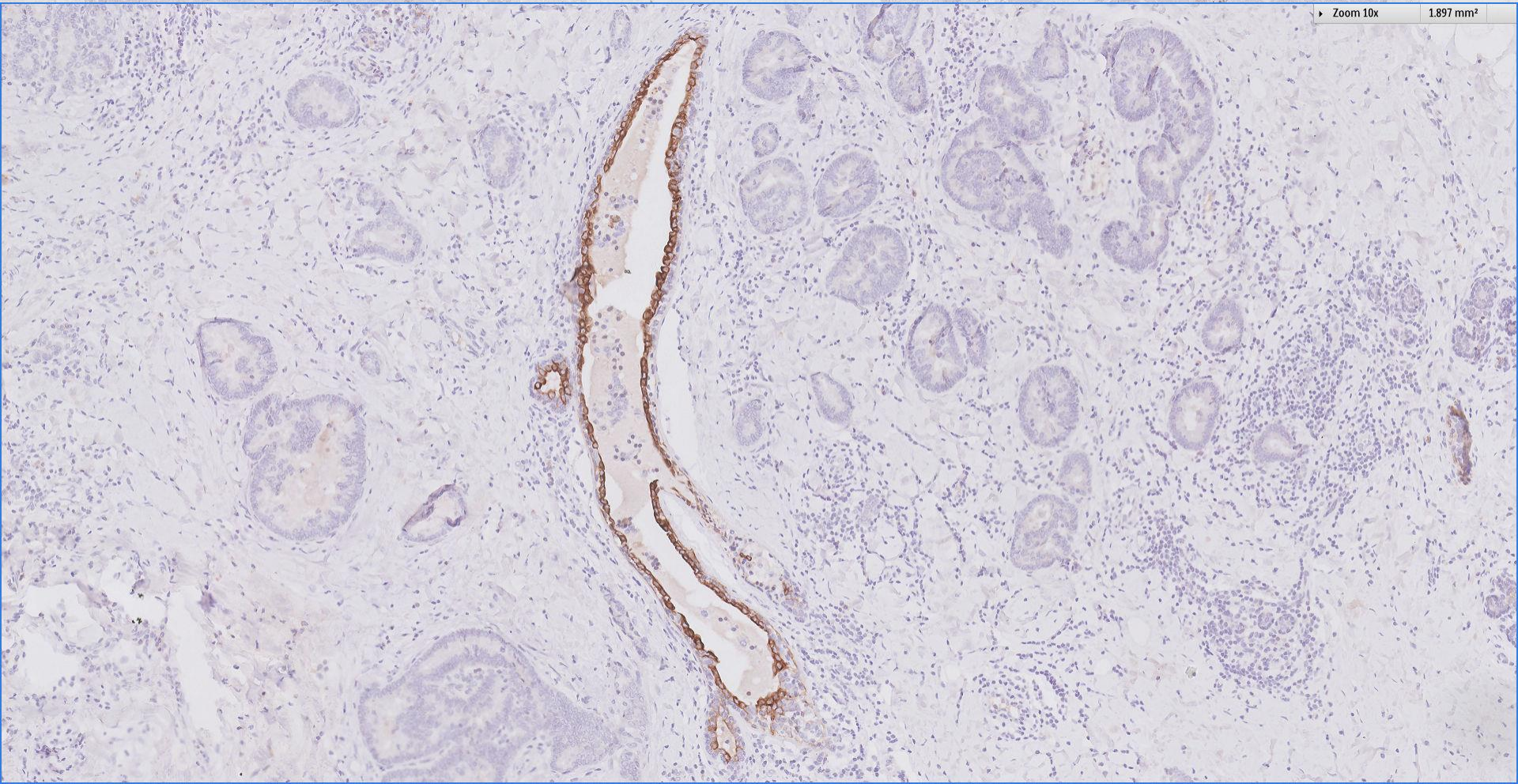
 Breast  
Pathology  
Course 2018



Singapore  
General Hospital  
SingHealth  
Division of Pathology

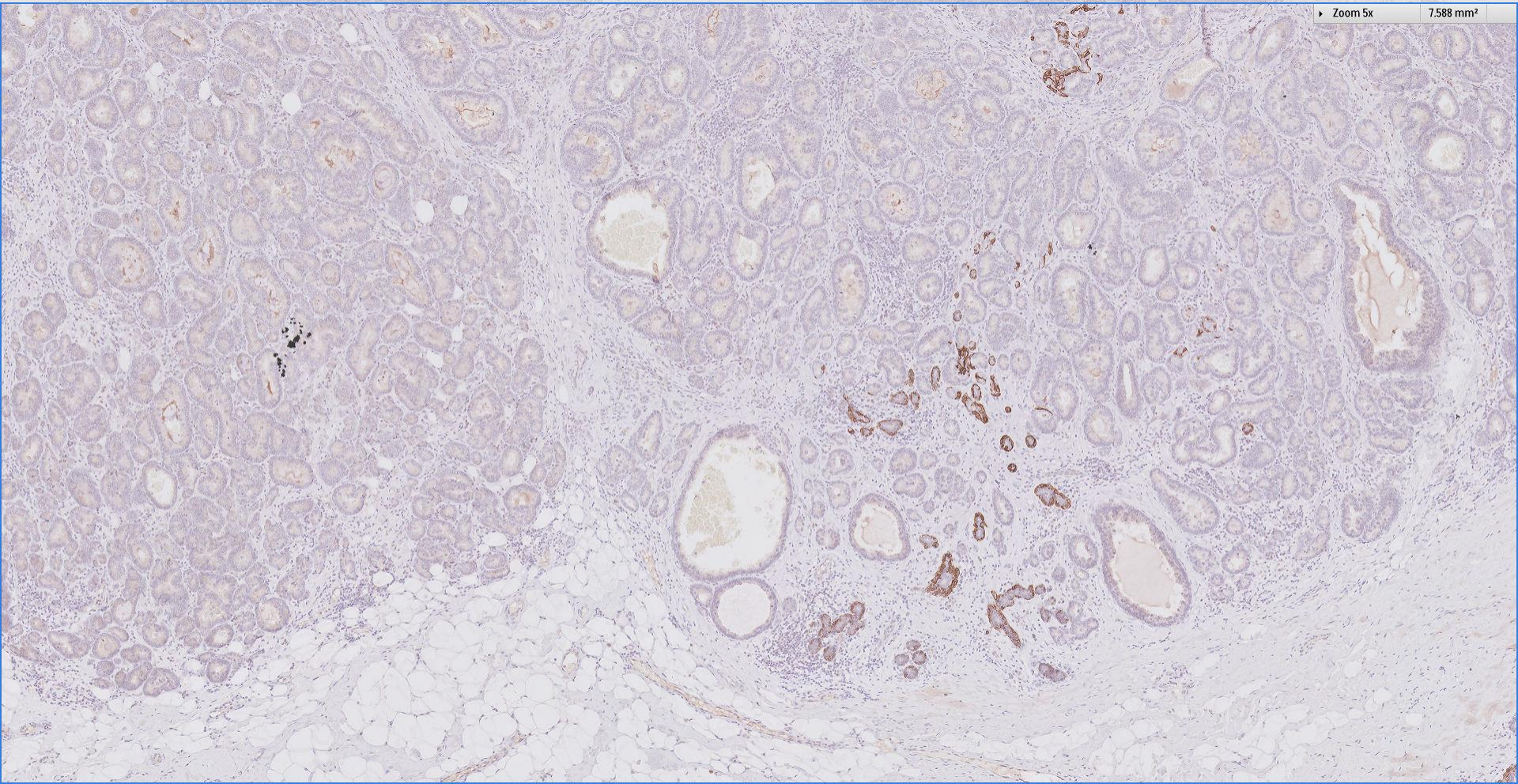


CK5/6

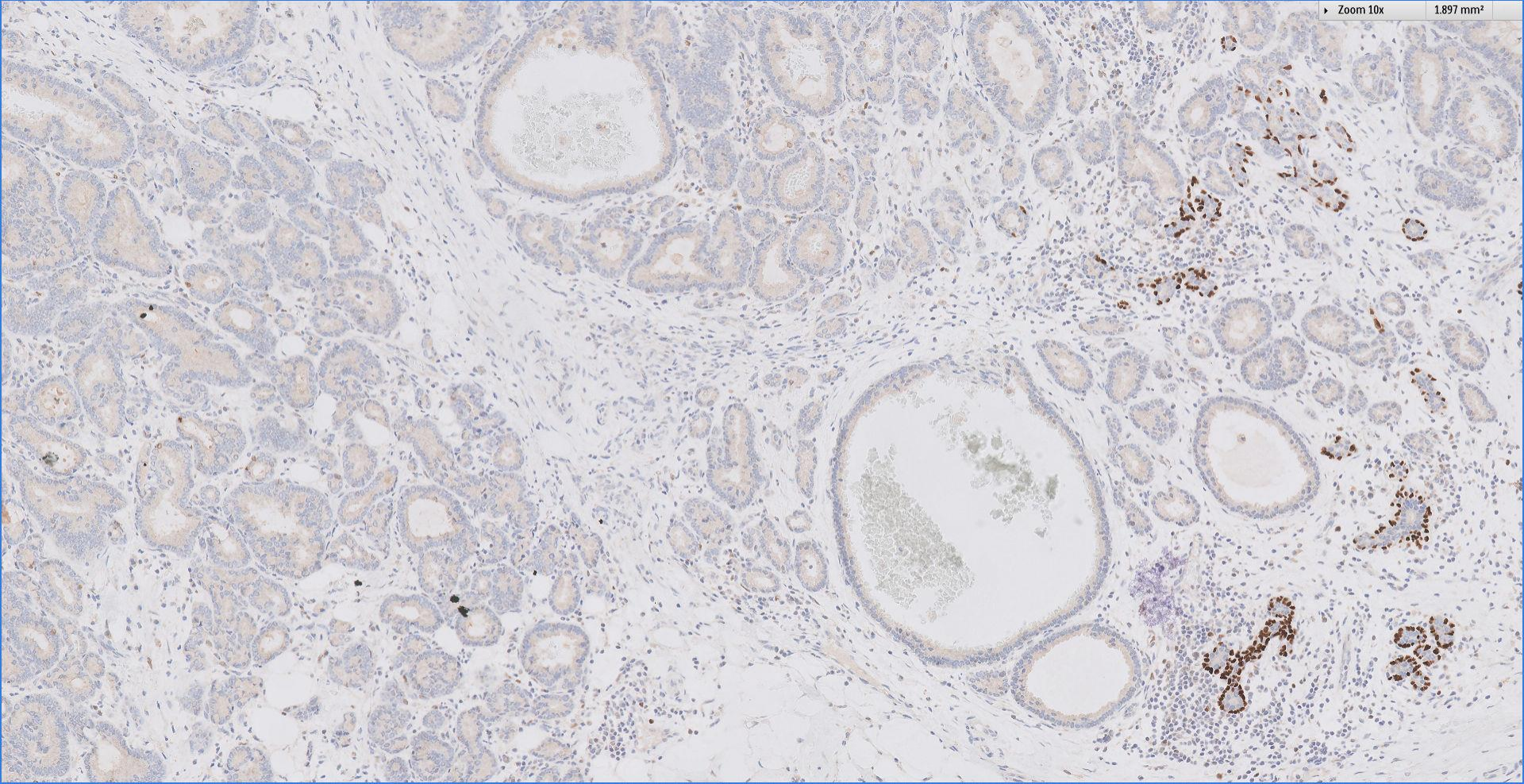




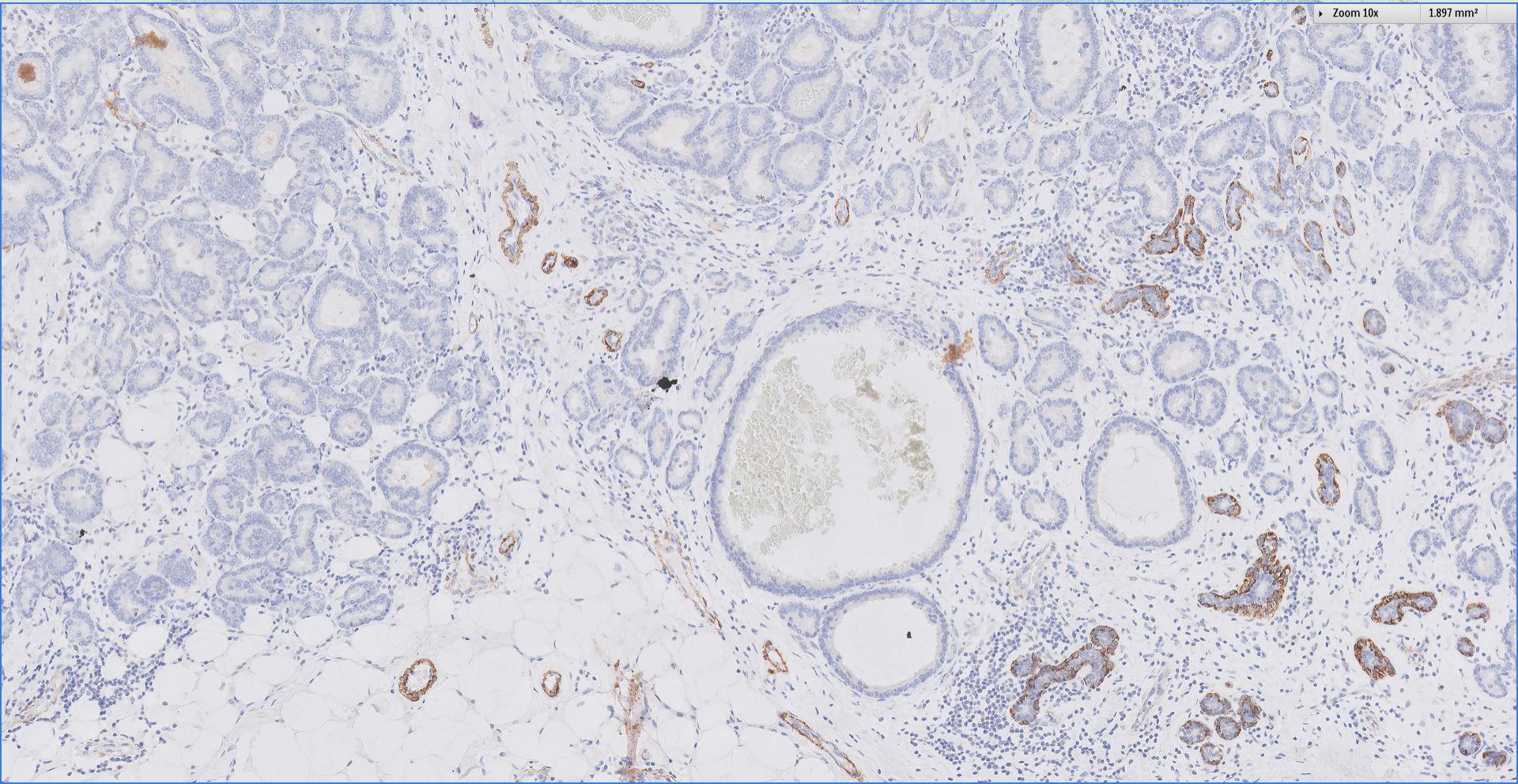
CK14



p63



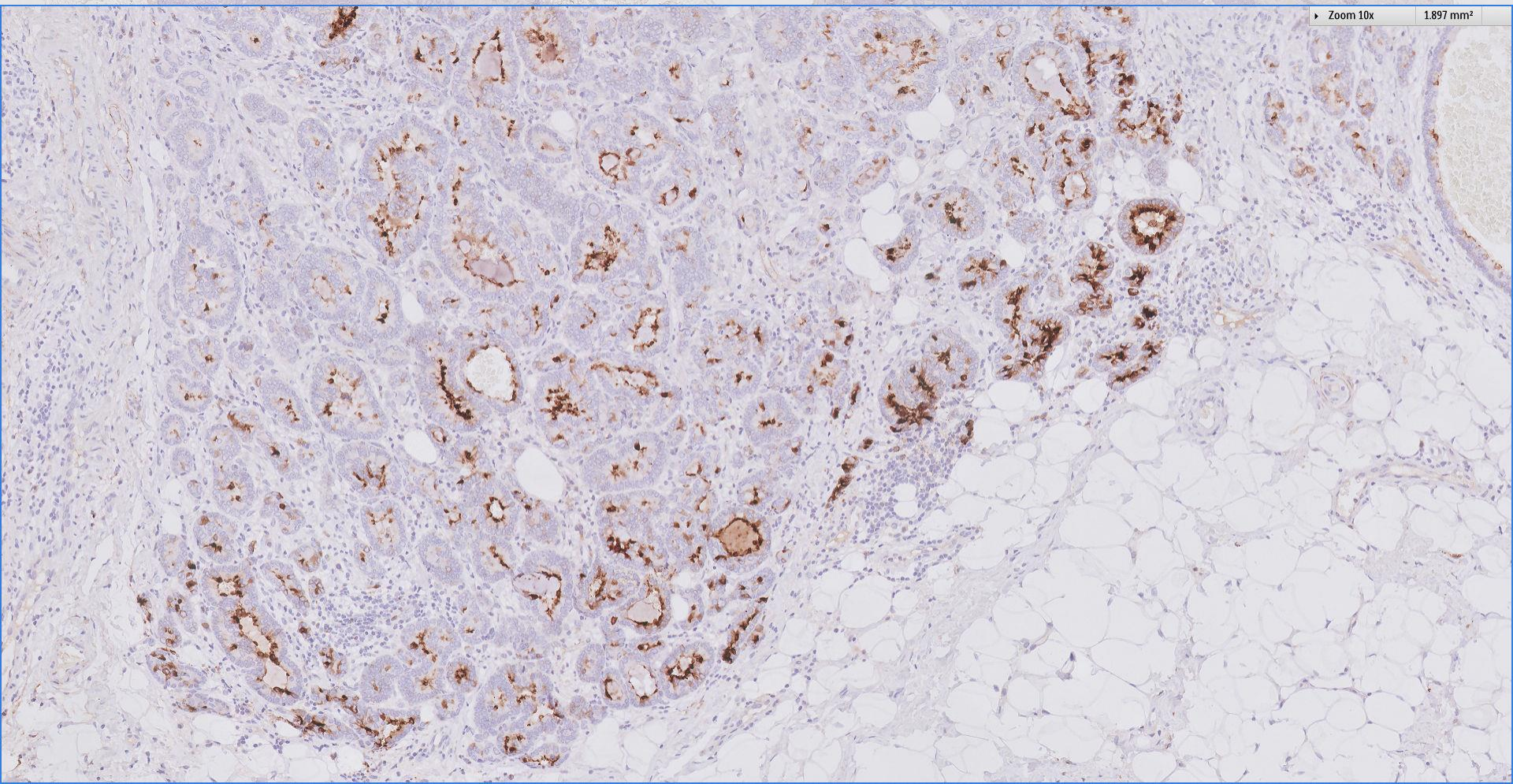
SMMS



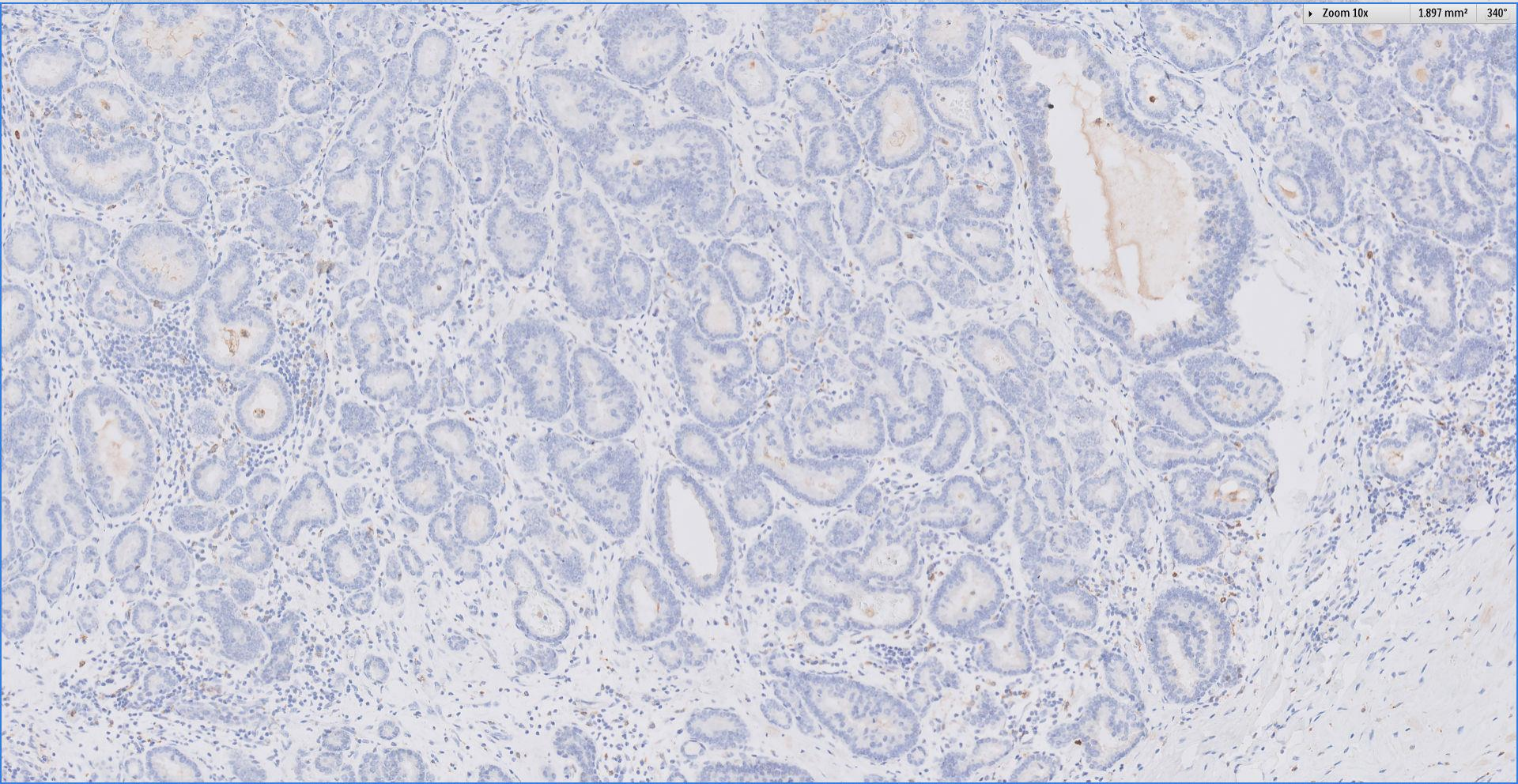
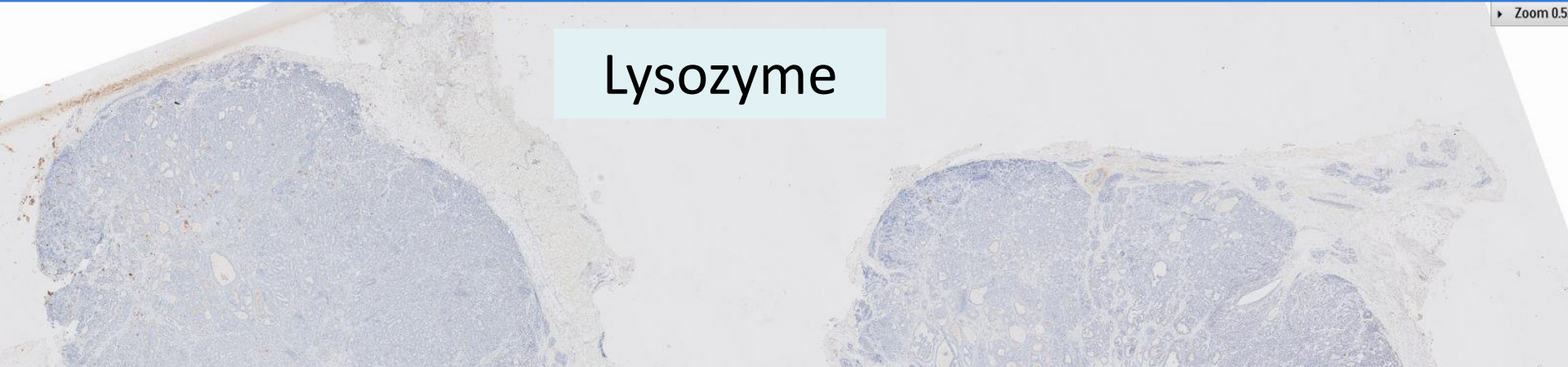
Zoom 10x

1.897 mm<sup>2</sup>

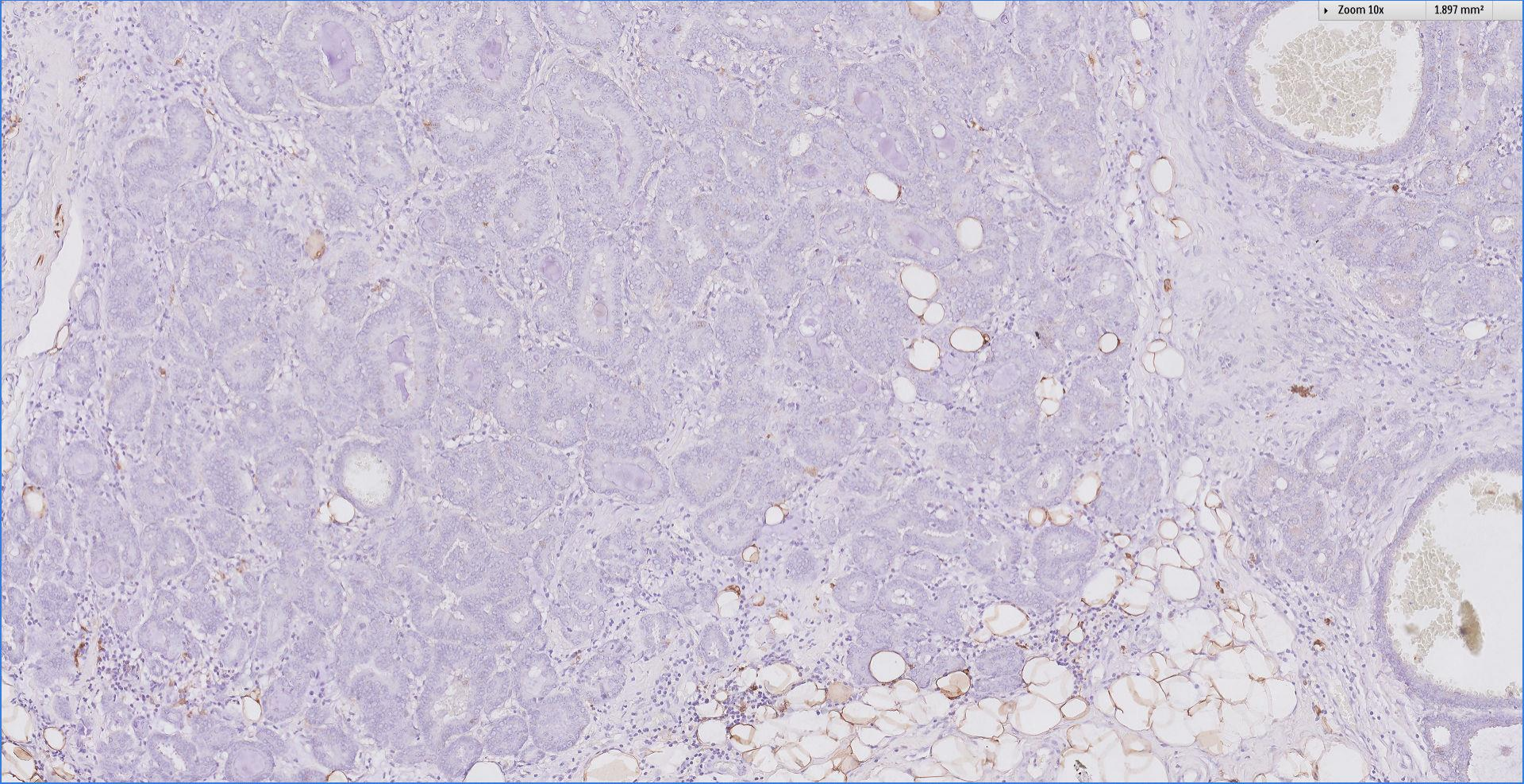
EMA



# Lysozyme



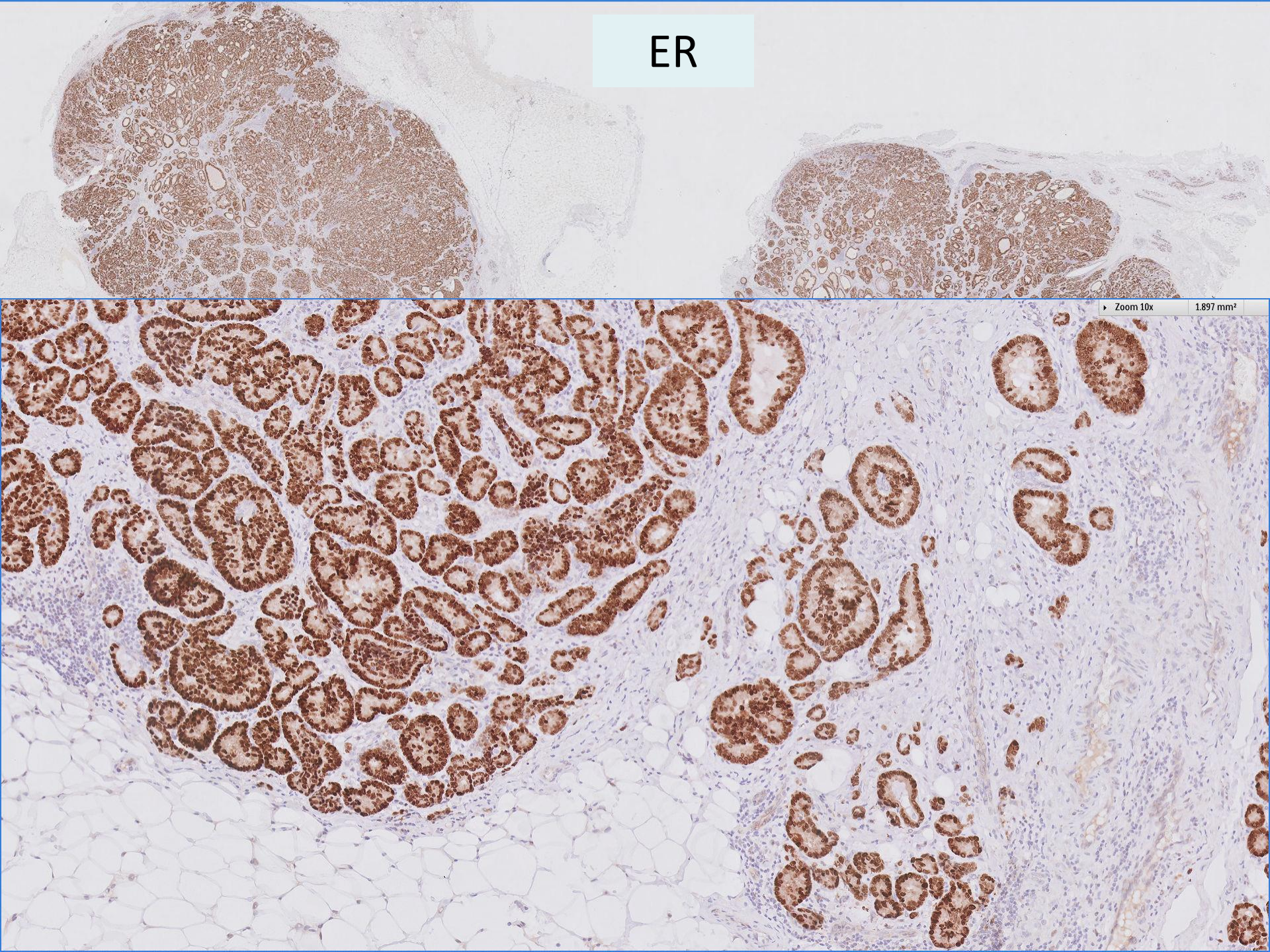
S100



Zoom 10x

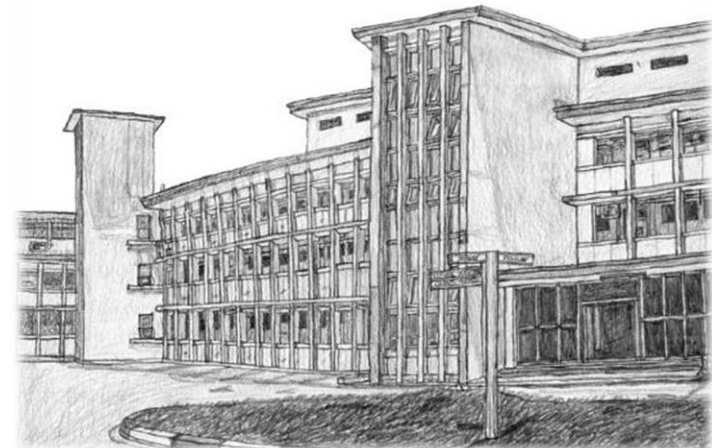
1.897 mm<sup>2</sup>

ER



# Diagnosis

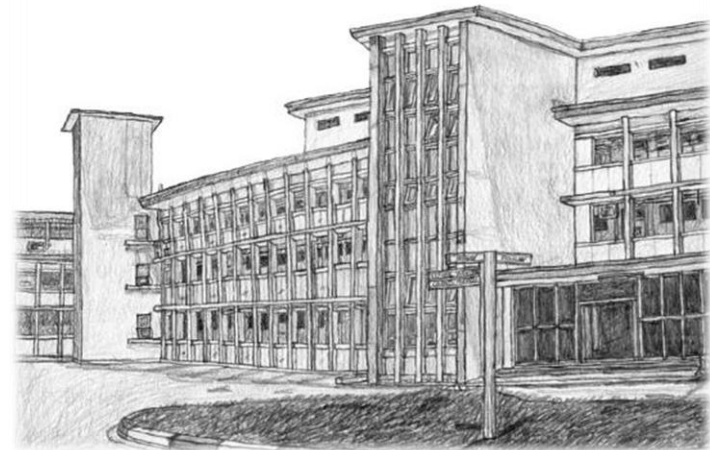
Invasive ductal carcinoma, grade 1  
(*tubule score 1, nuclear pleomorphism score  
2, mitotic score 2*)



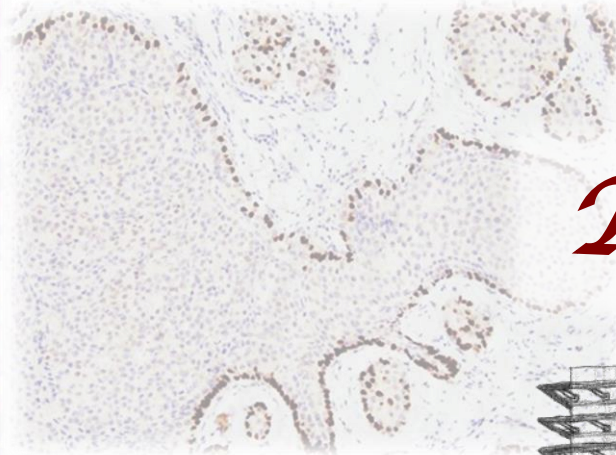
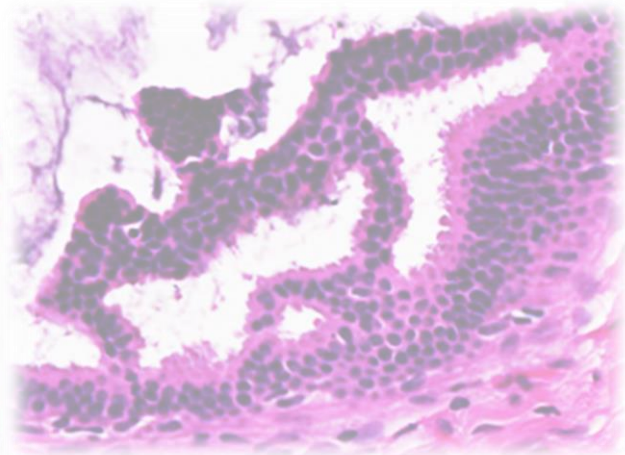
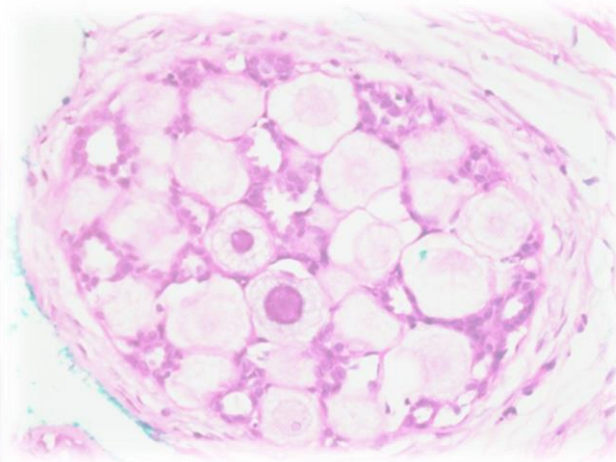
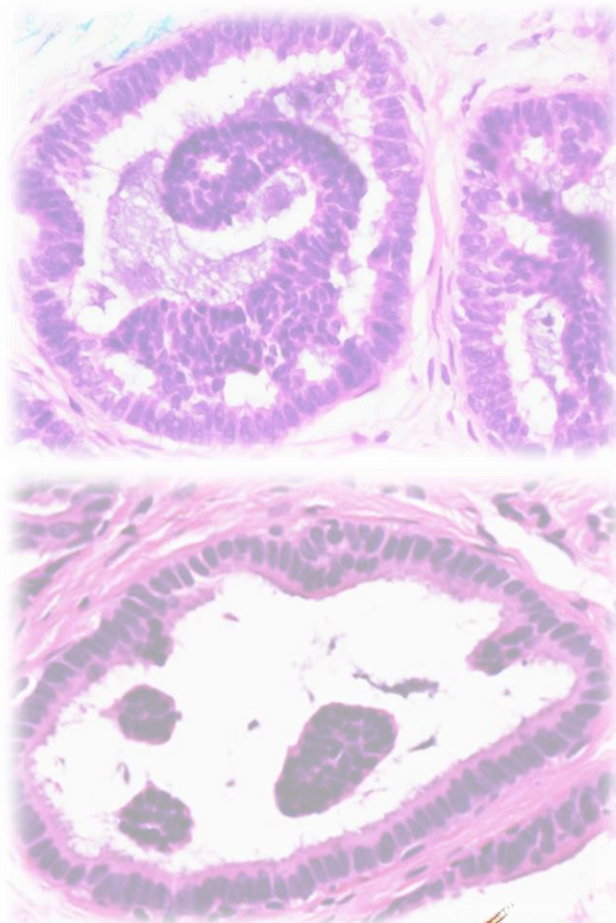


# *Differential diagnosis*

- Tubular adenoma ~
  - Myoepithelial cells preserved
- Microglandular adenosis ~
  - More haphazard arrangement
  - S100 positive
  - ER negative
- Tubular carcinoma
  - Tubules in >90% of tumour
- Acinic cell carcinoma
  - S100, lysozyme positive
  - ER negative



 Breast  
Pathology  
Course 2018



*Thank you!*

