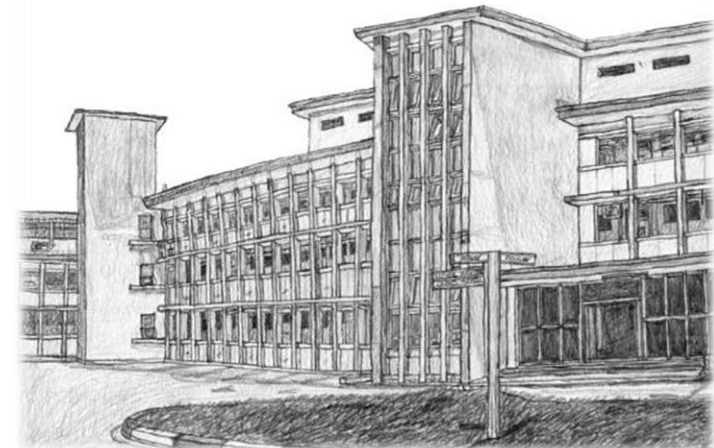
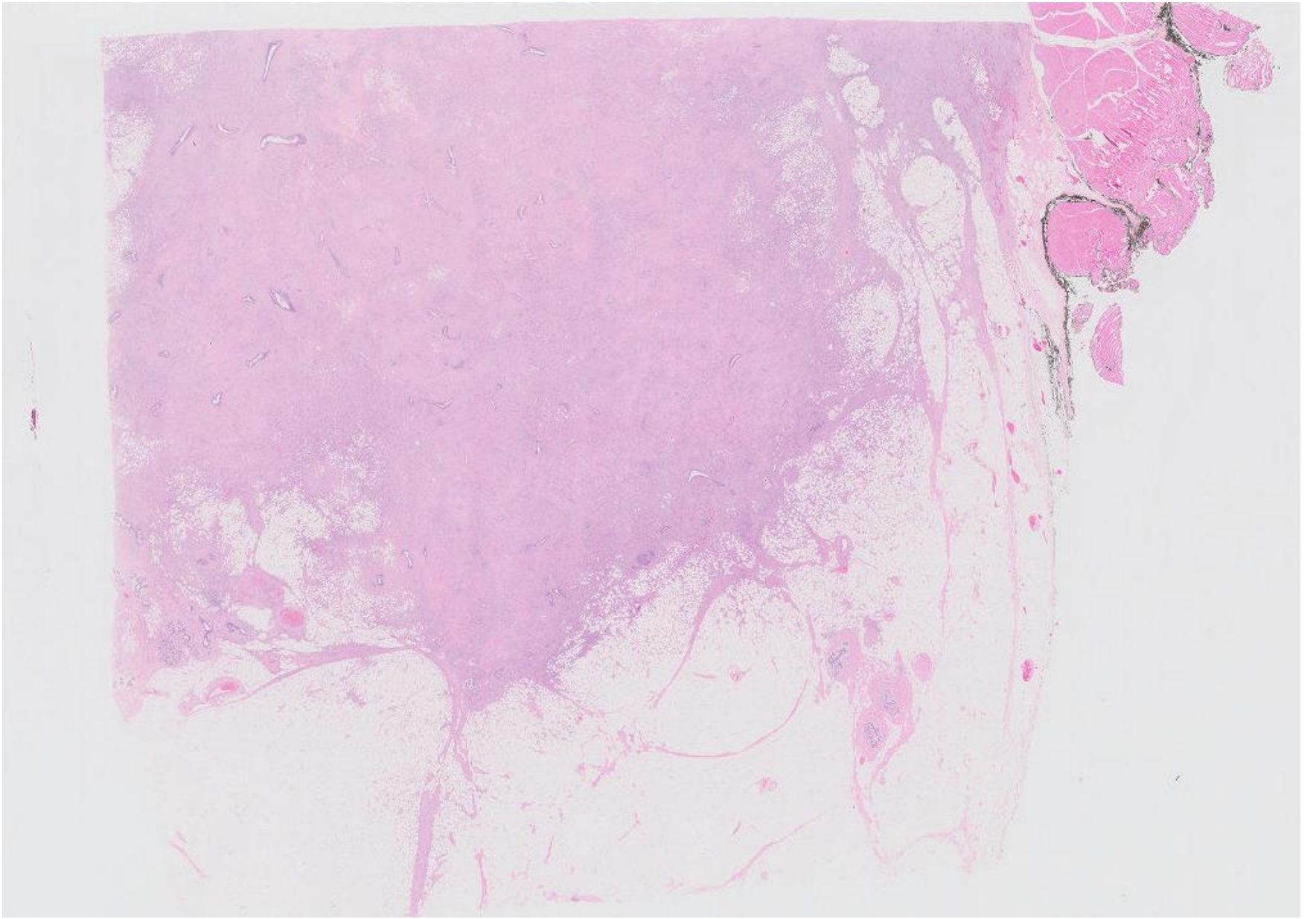


Case 17

22 year old female.

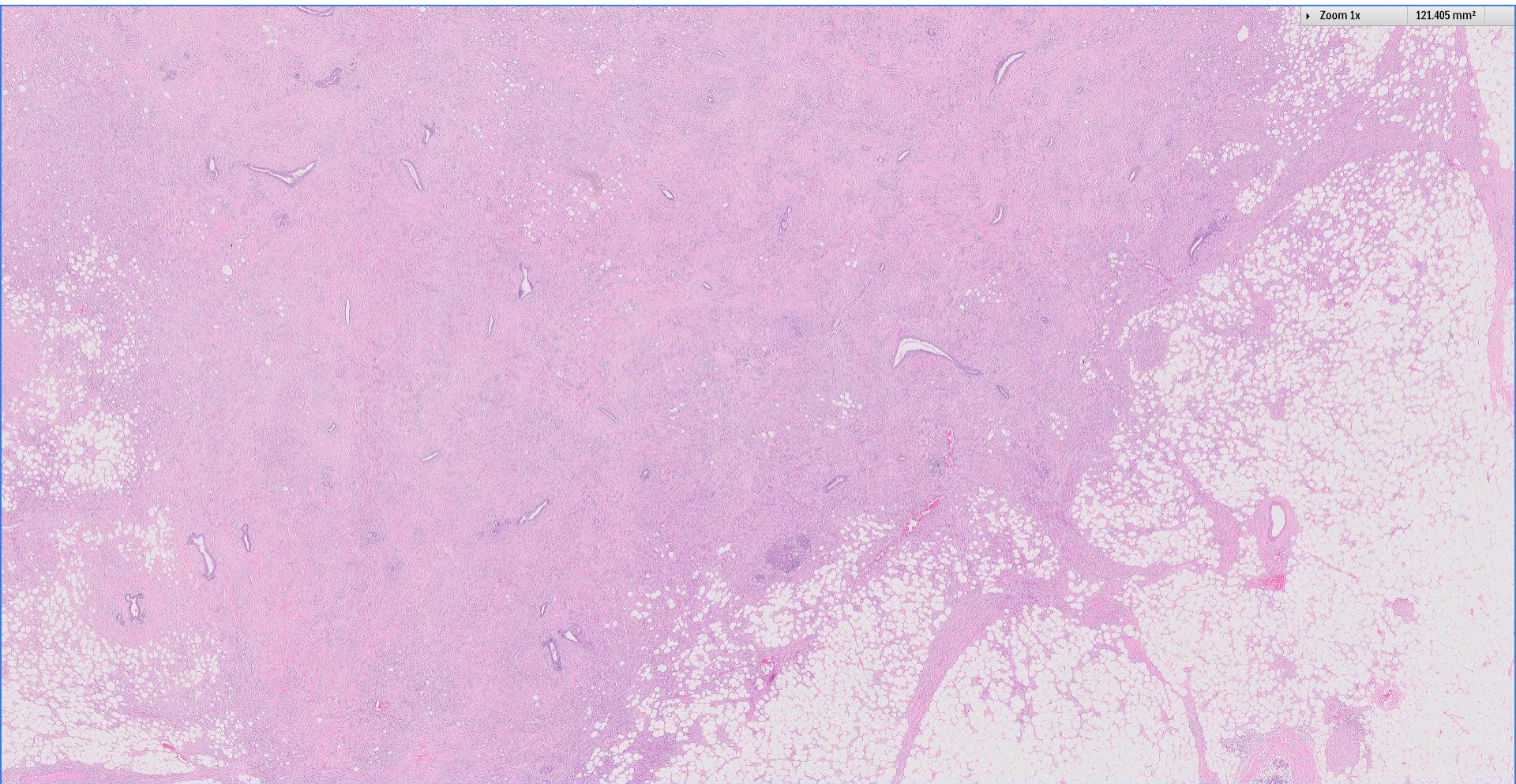
Left mastectomy and sentinel lymph node biopsy.





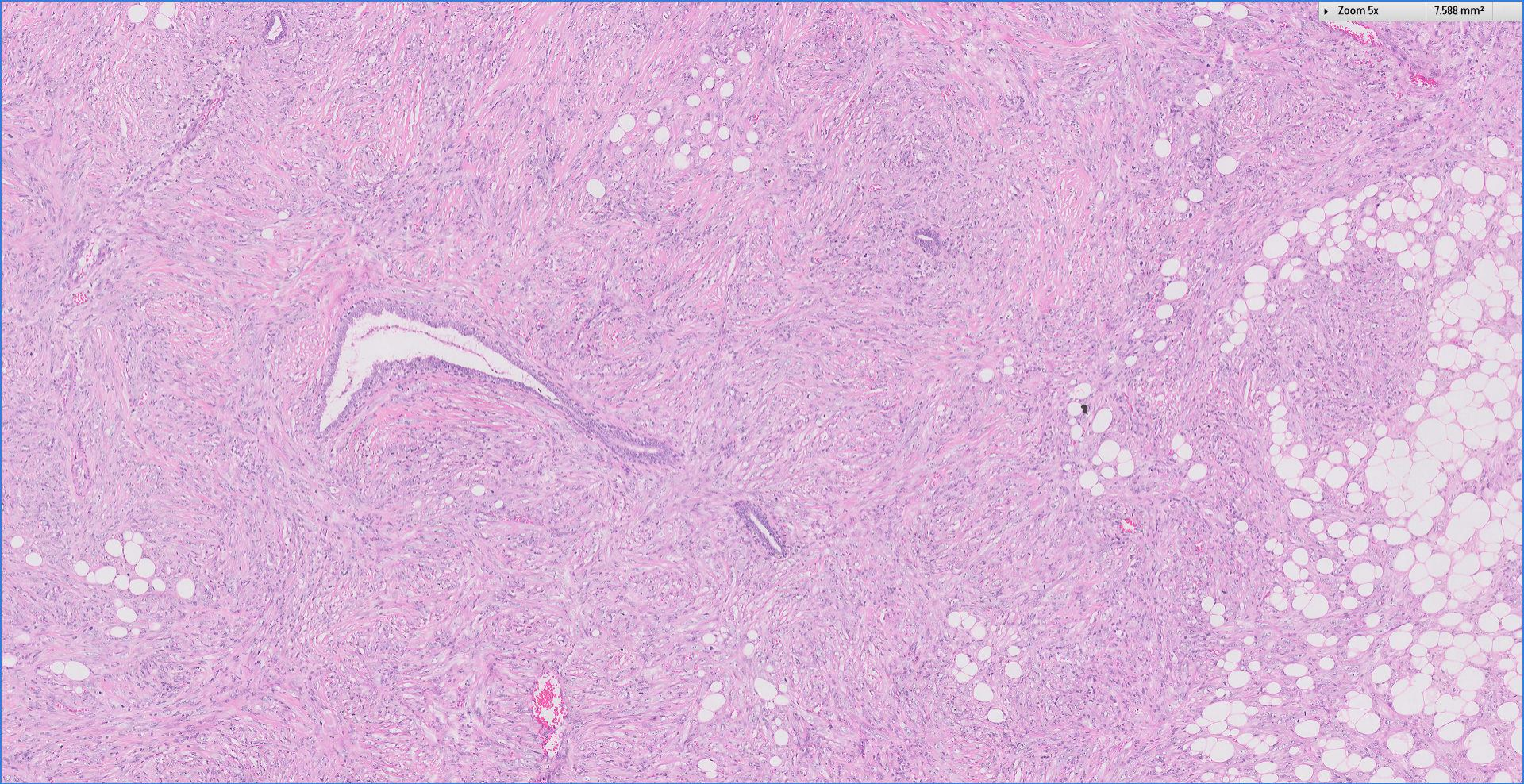
Zoom 1x

121.405 mm²



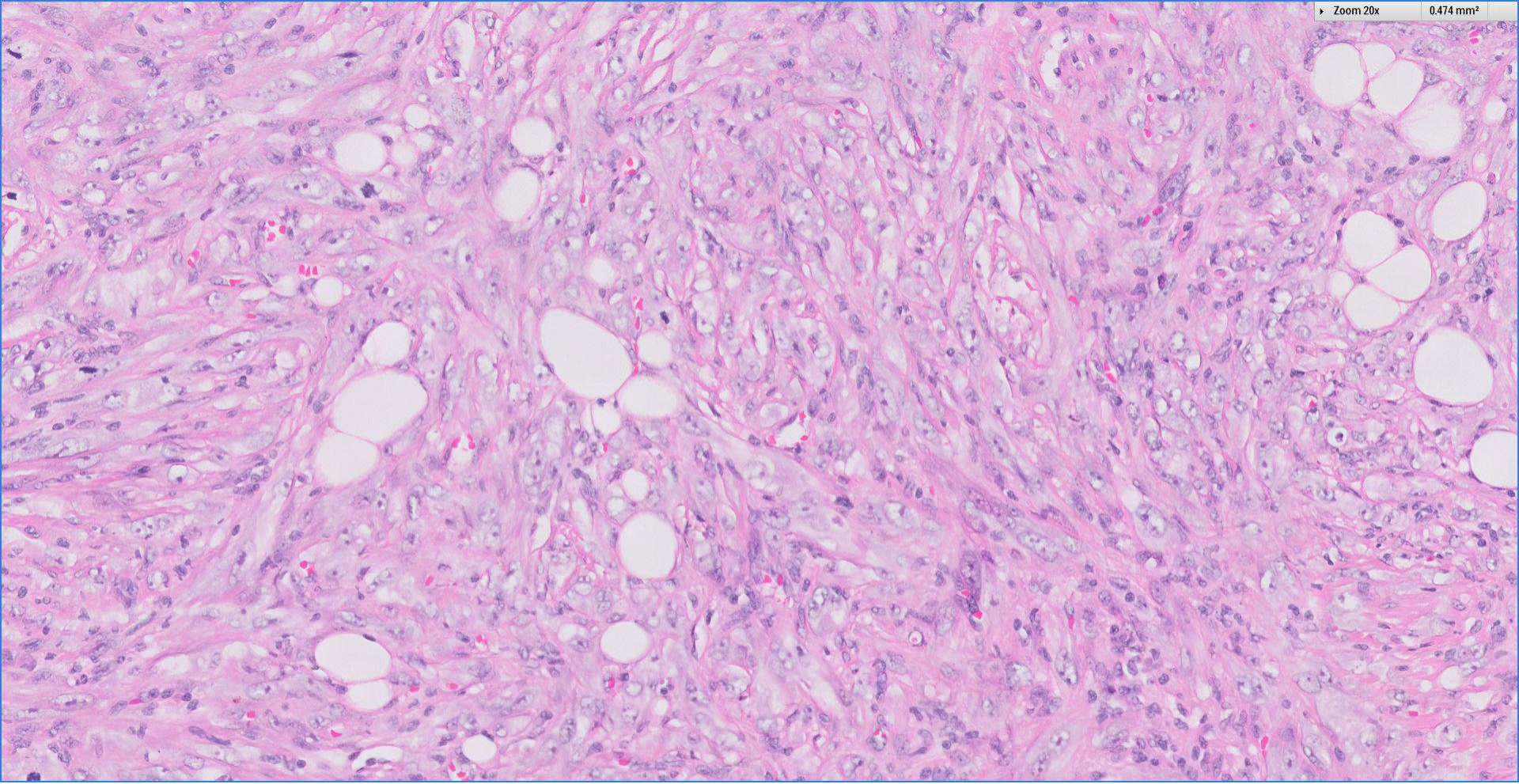
Zoom 5x

7.588 mm²



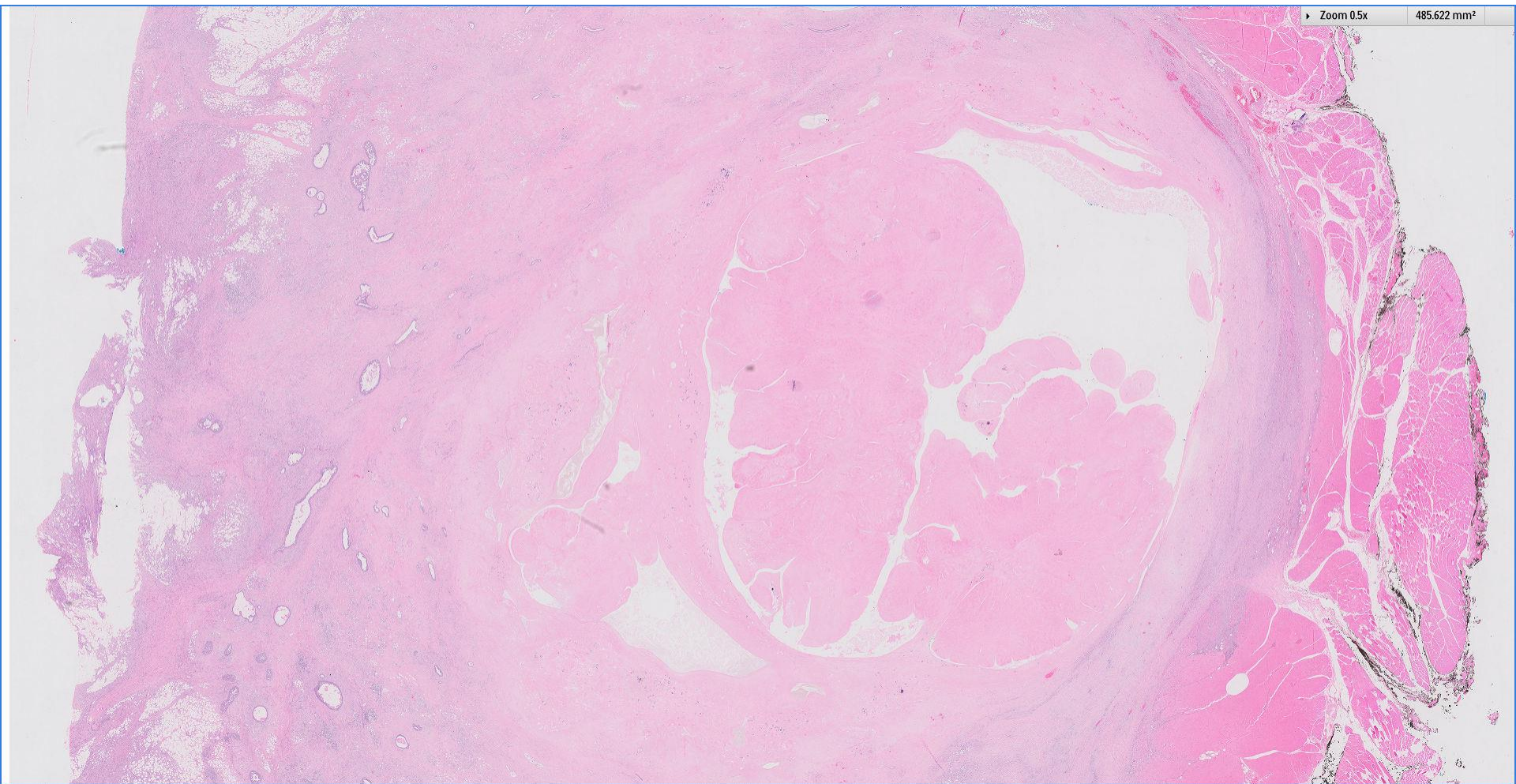
Zoom 20x

0.474 mm²

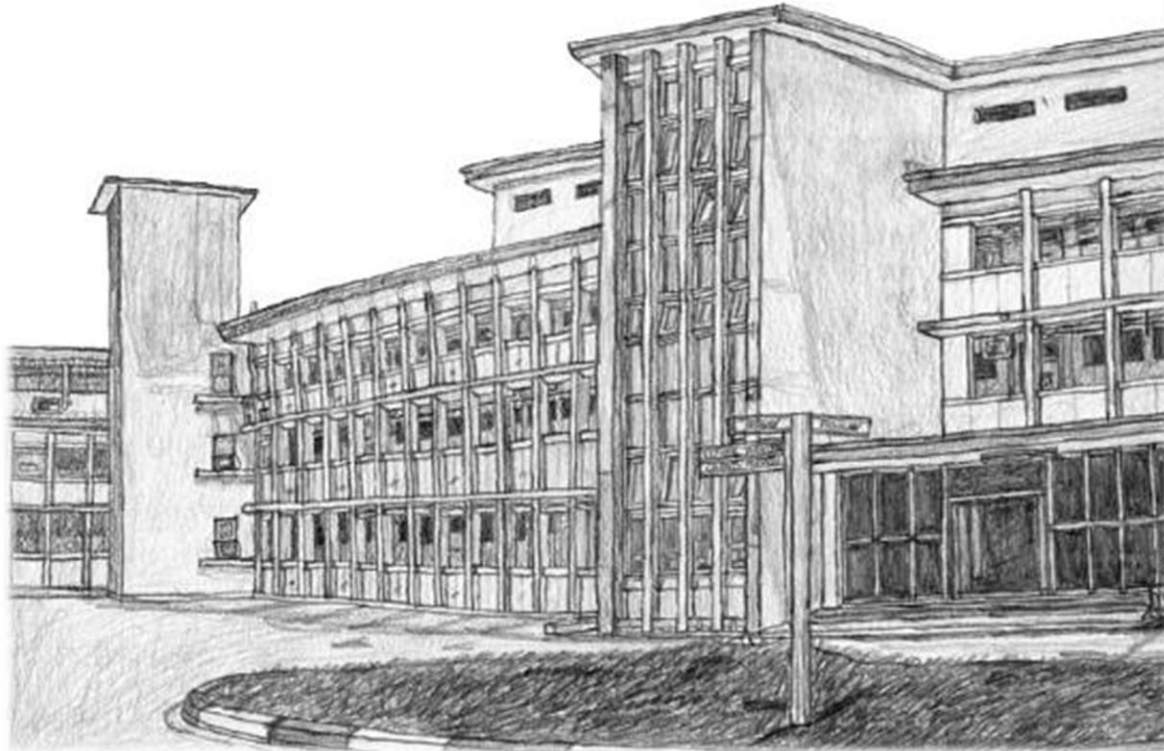


Zoom 0.5x

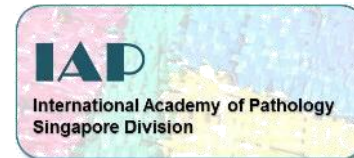
485.622 mm²



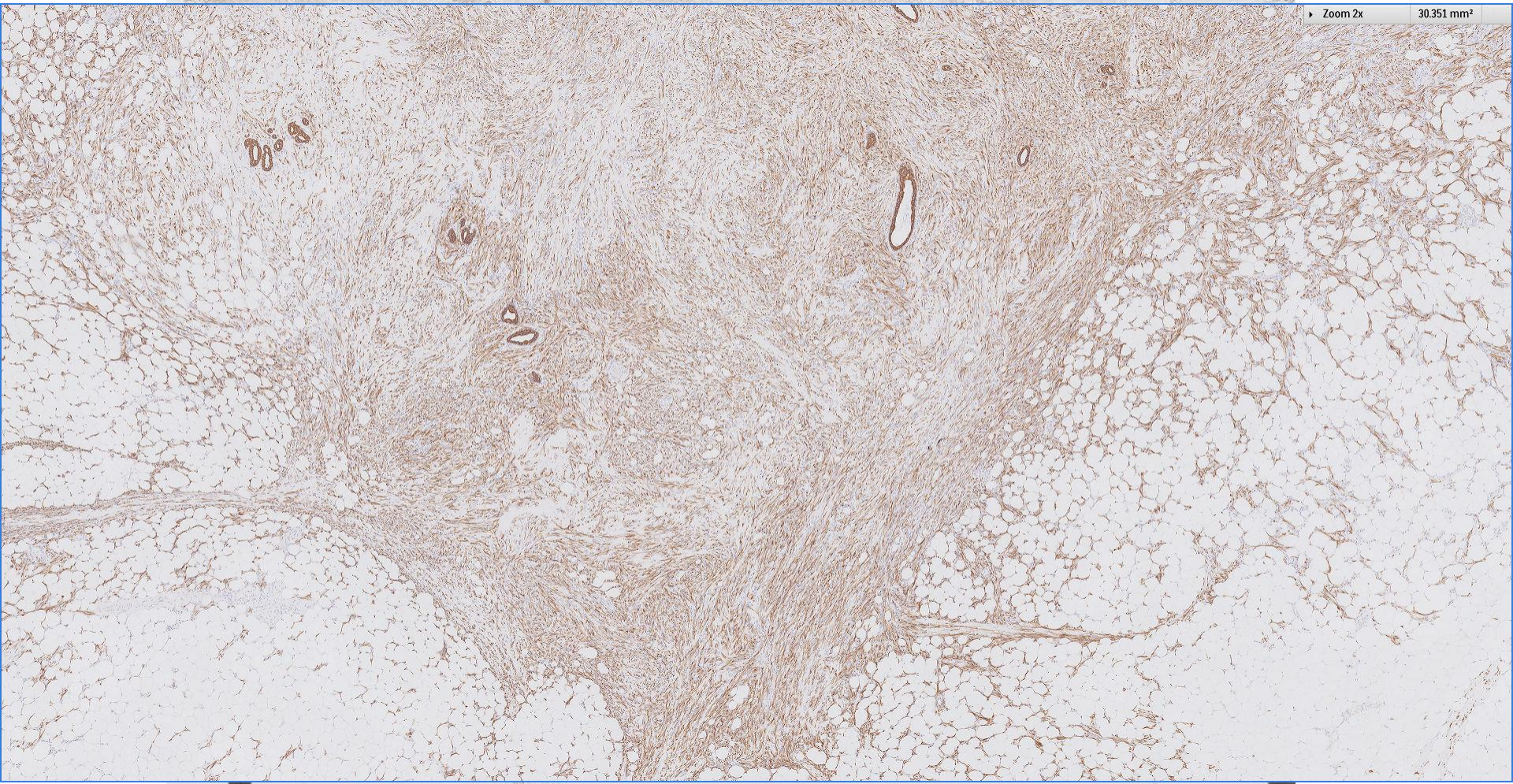
 Breast
Pathology
Course 2018



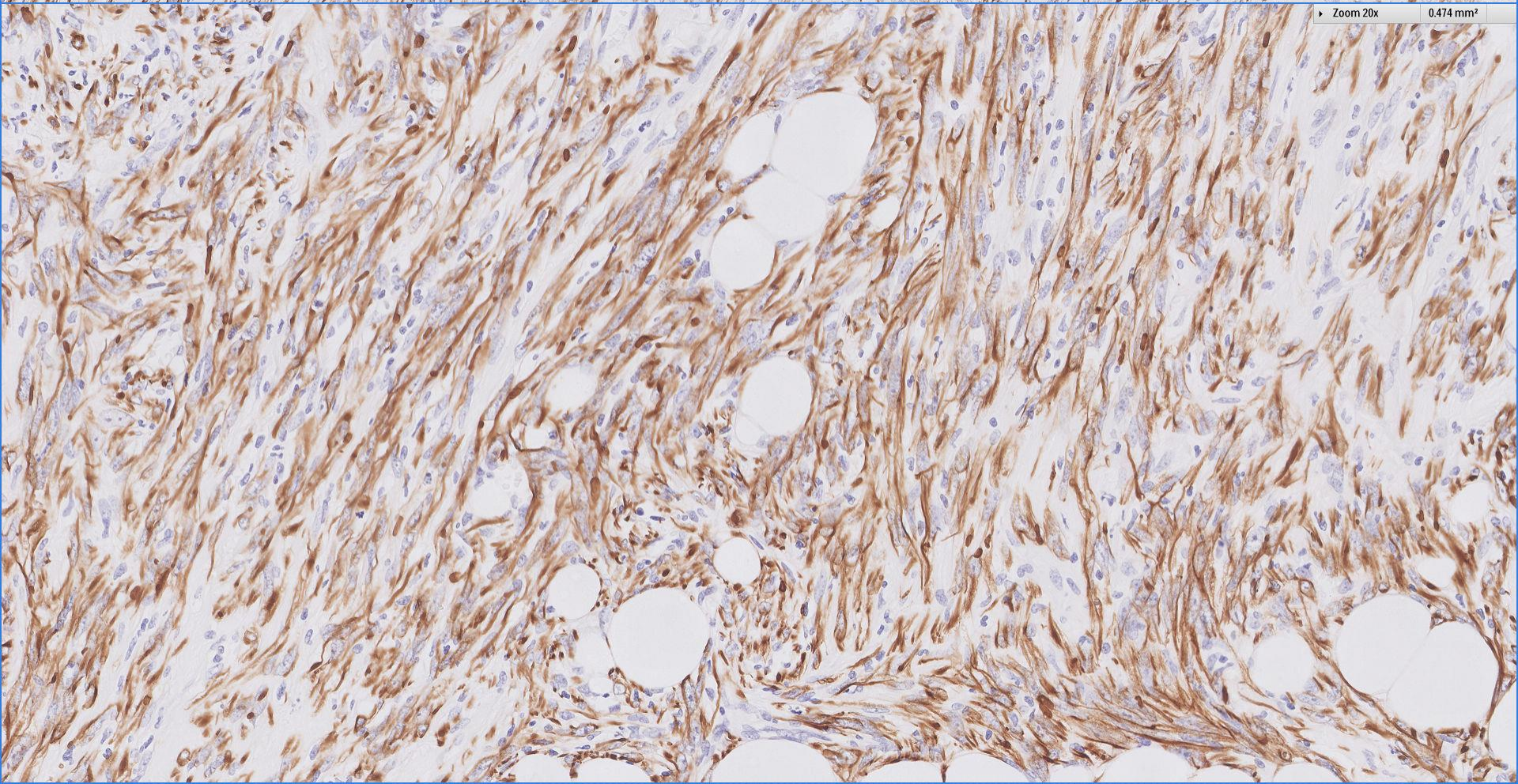
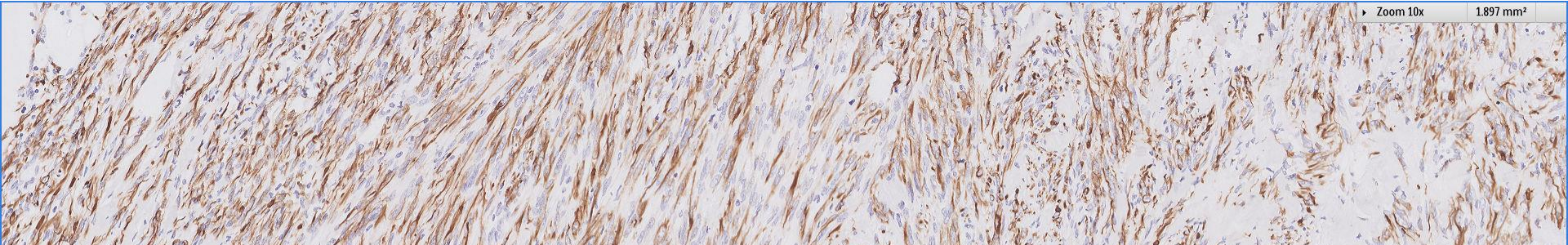
Singapore
General Hospital
SingHealth
Division of Pathology



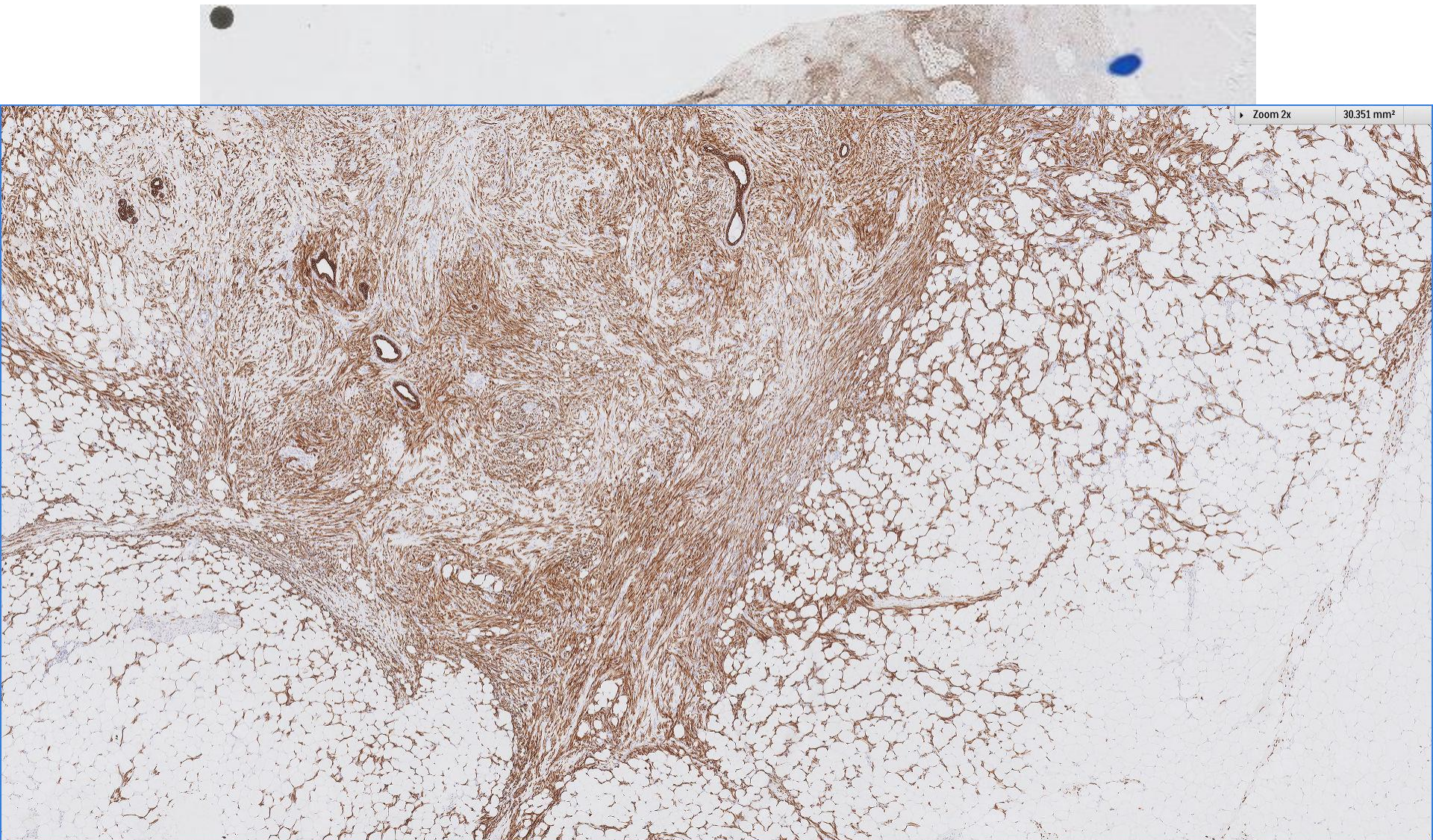
MNF116



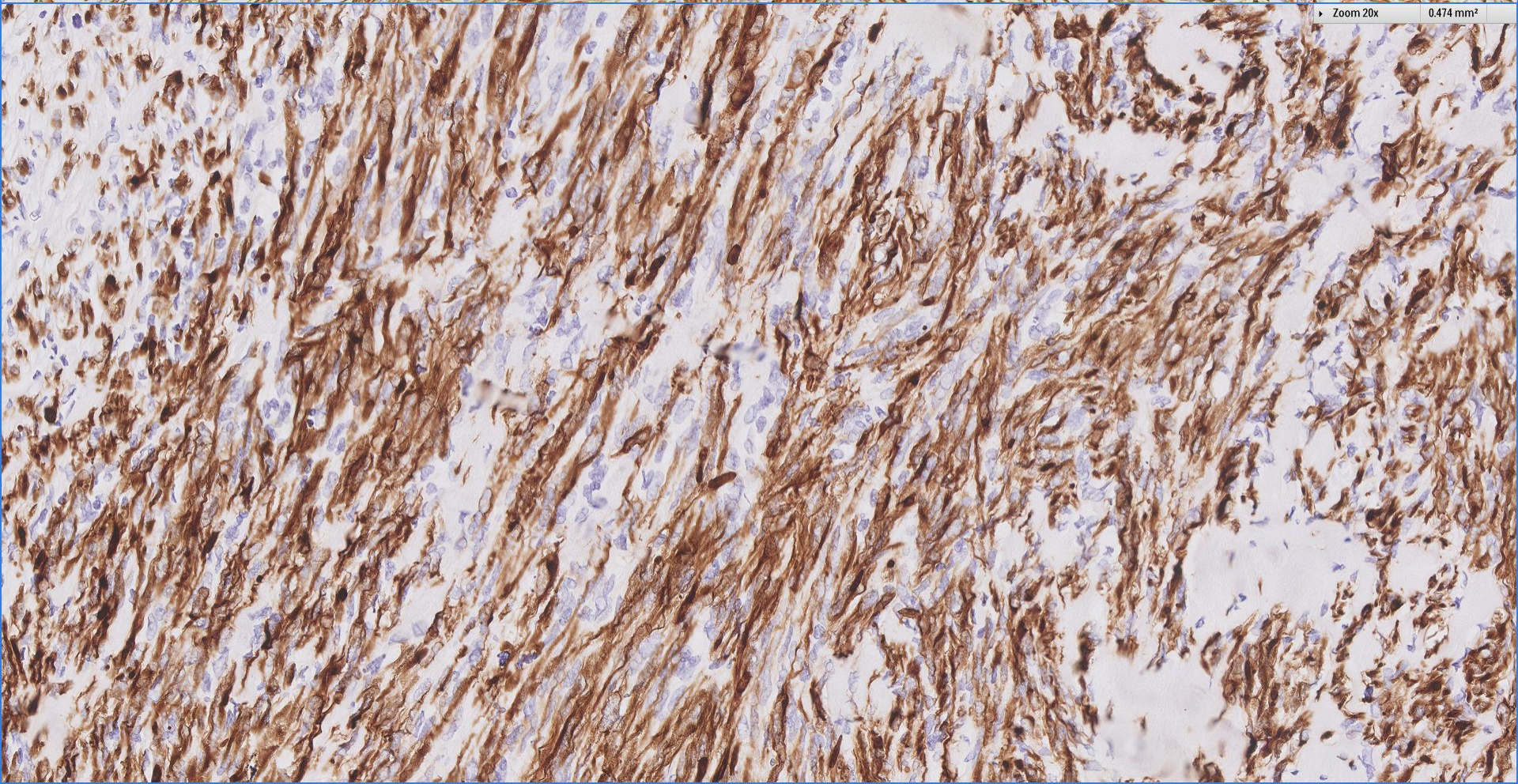
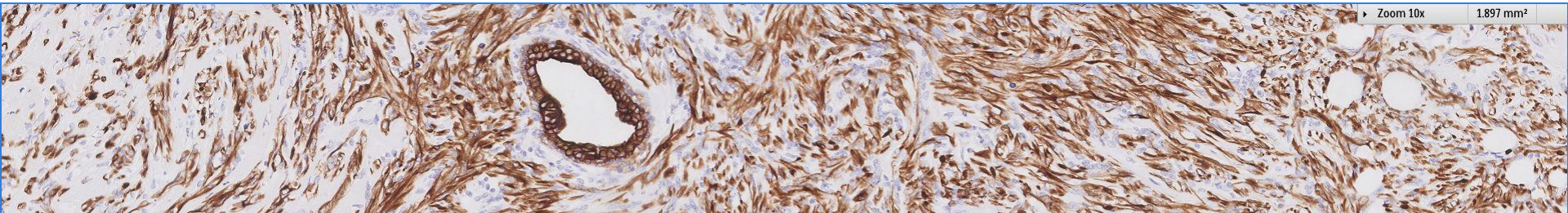
MNF116



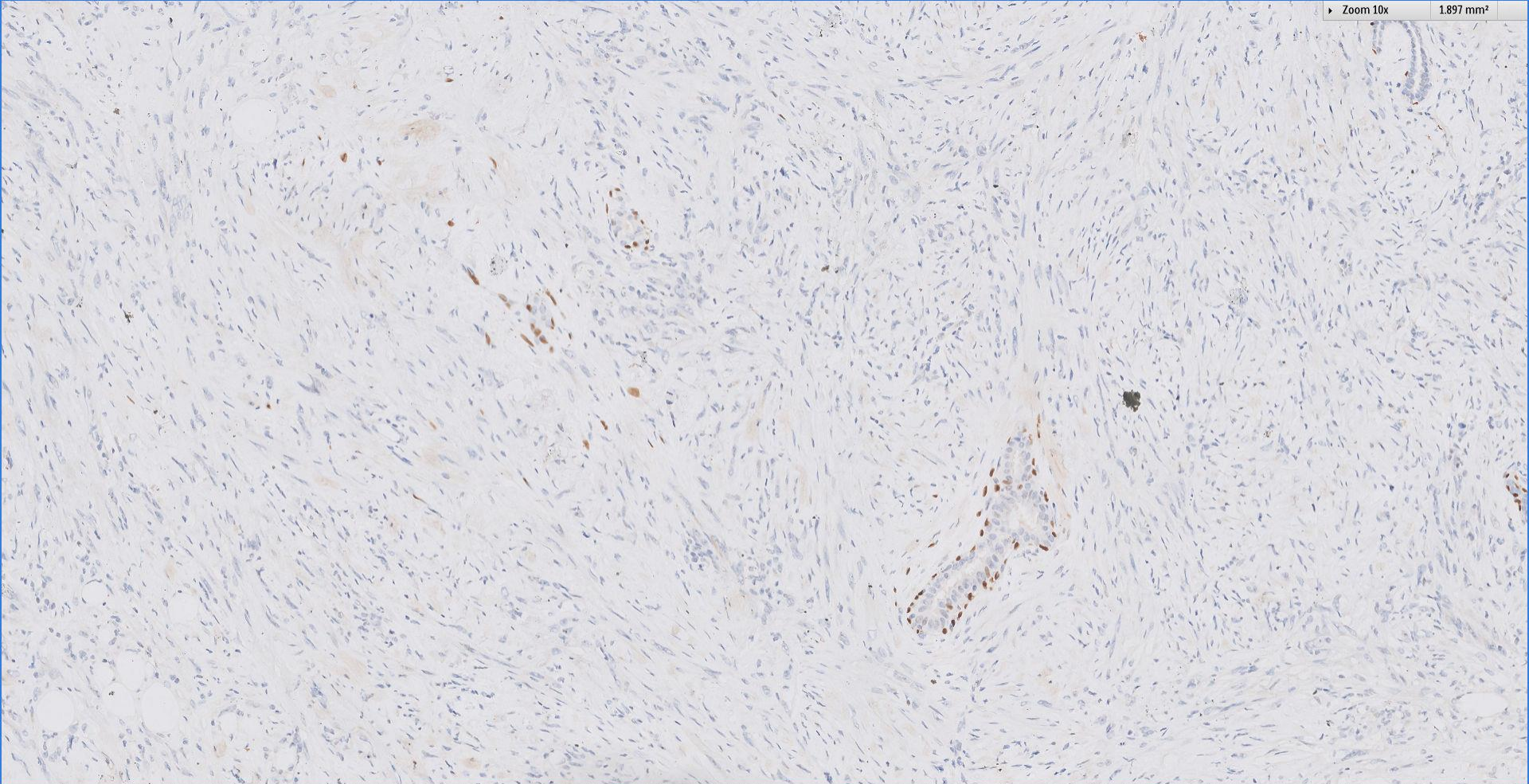
Cam5.2



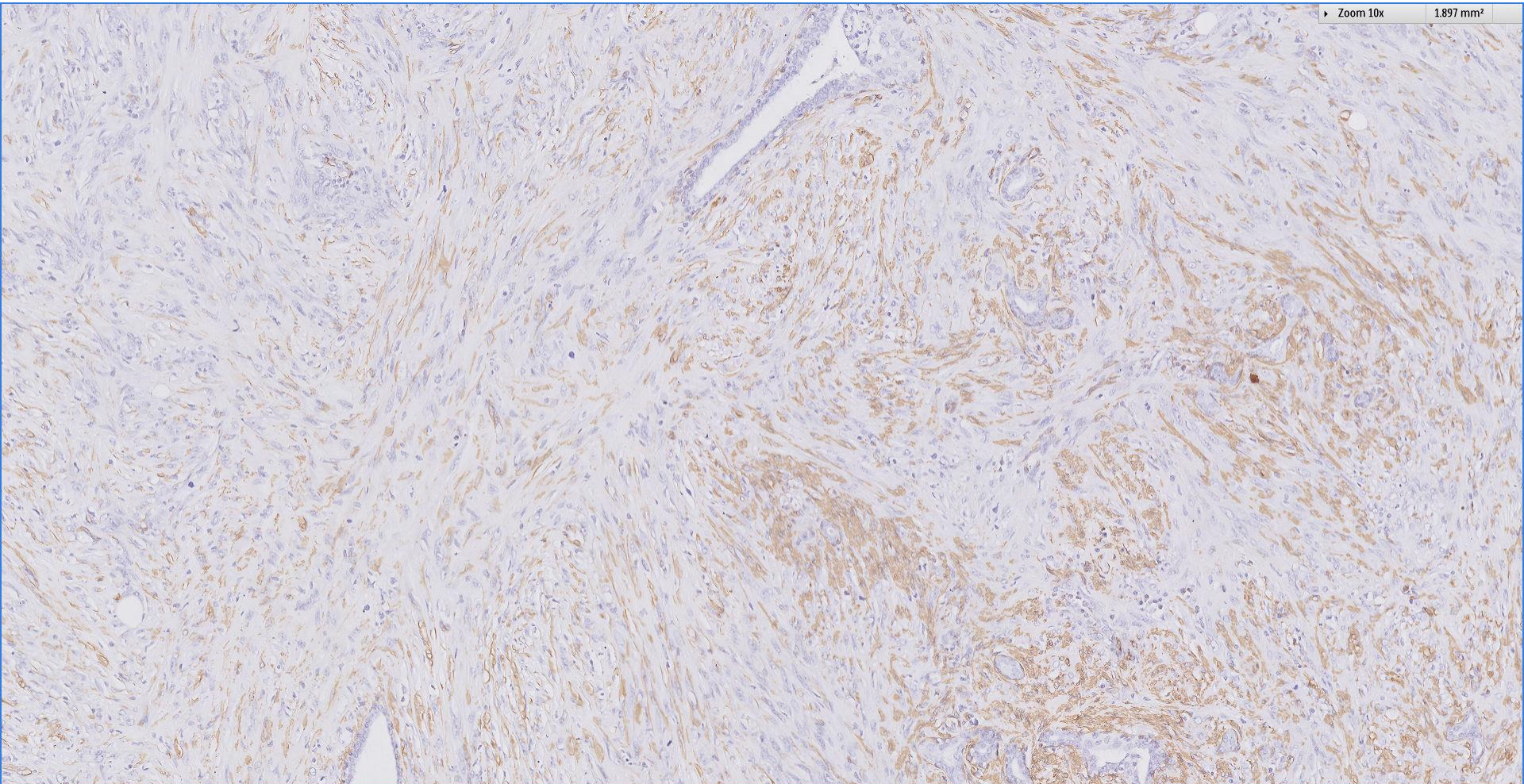
Cam5.2



p63



SMA



34βE12

Zoom 10x 1.897 mm²

CD31

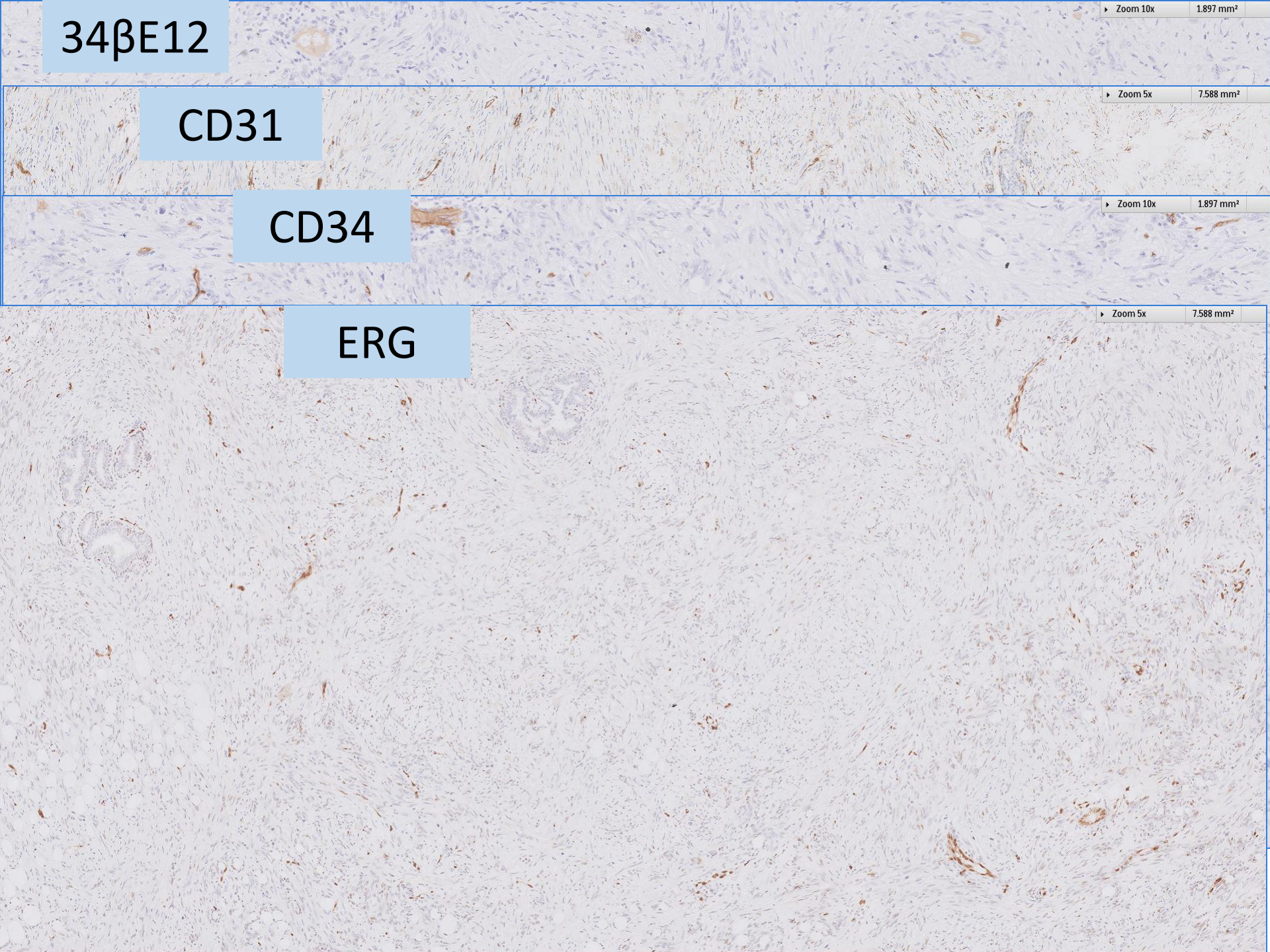
Zoom 5x 7.588 mm²

CD34

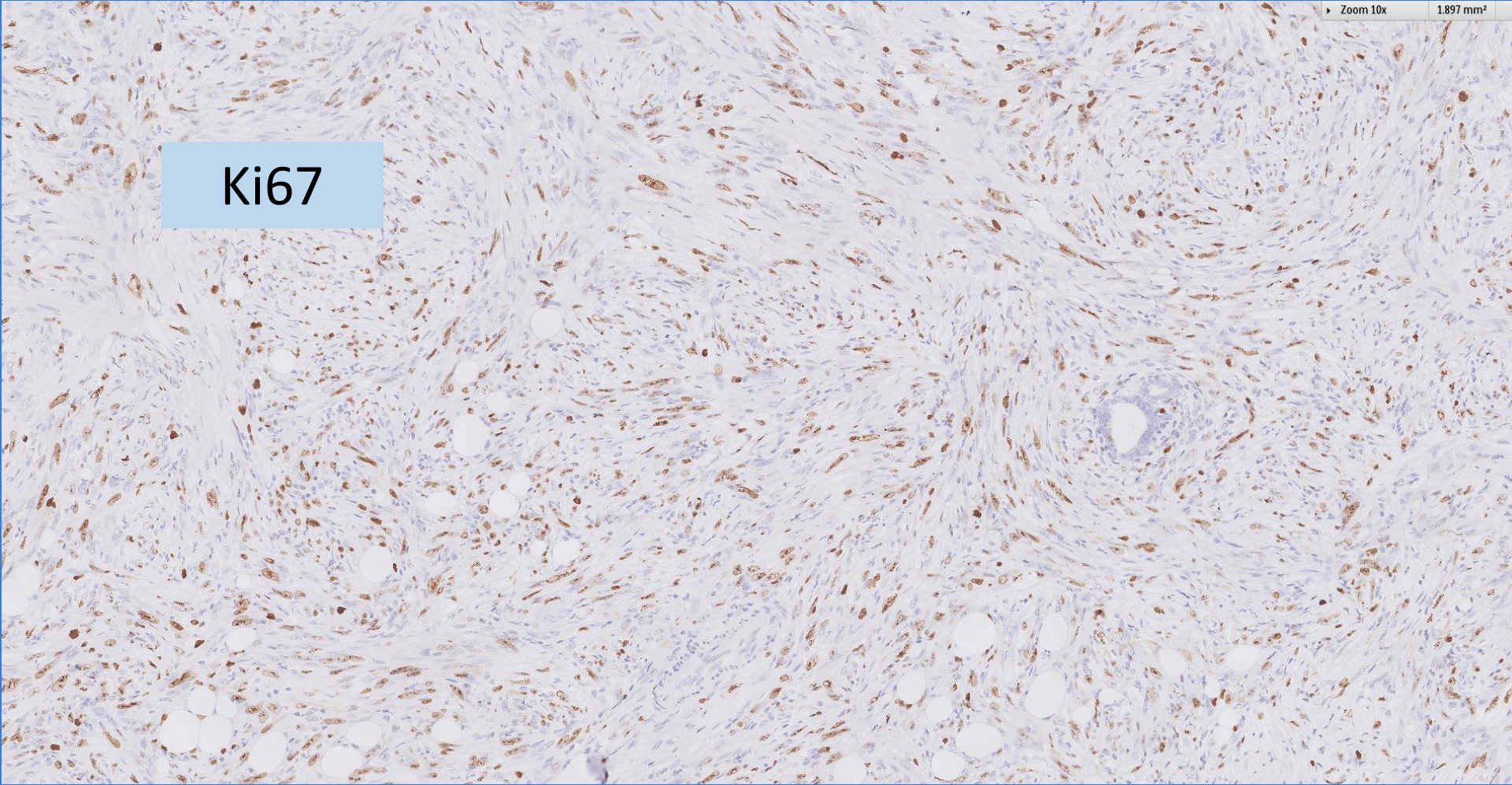
Zoom 10x 1.897 mm²

ERG

Zoom 5x 7.588 mm²



Ki67



Desmin, ER, PR, cerbB2 negative

Diagnosis

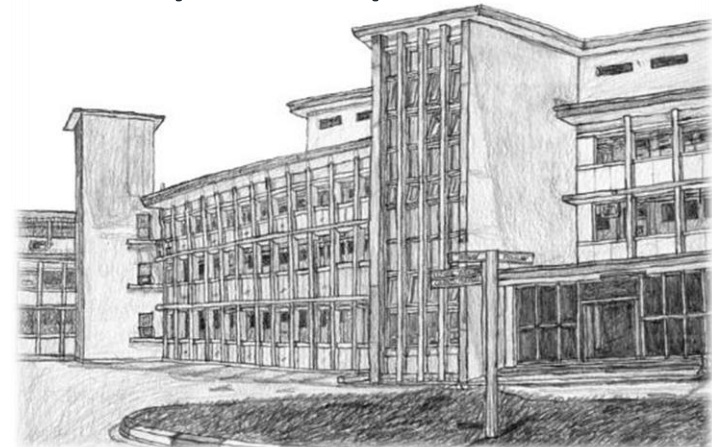
Left breast mastectomy:

Spindle cell metaplastic carcinoma, grade 3, 4.5cm.

ER negative, PR negative, cerbB2 negative.

Sentinel lymph nodes negative.

(infarcted fibroepithelial lesion invaded by metaplastic carcinoma)



Differential diagnosis

- Spindle cell metaplastic carcinoma ~
 - Diagnosis confirmed with diffuse keratin (MNF116, Cam5.2) staining.
- Malignant phyllodes tumour ~
 - Consideration raised due to the presence of an infarcted fibroepithelial tumour.
 - While malignant phyllodes tumours may display keratin staining in stromal cells, this is focal and patchy.

Stromal keratin expression in phyllodes tumours of the breast: a comparison with other spindle cell breast lesions

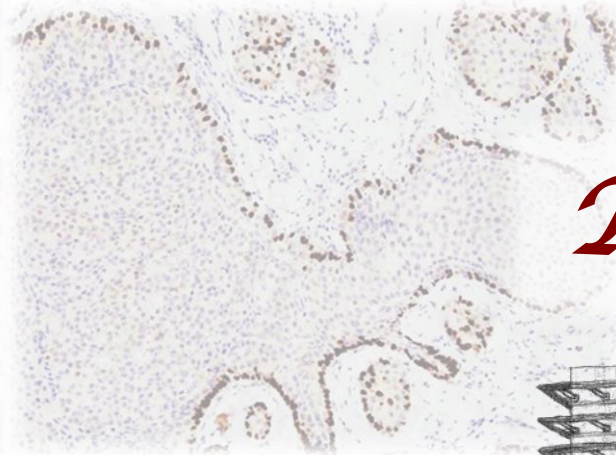
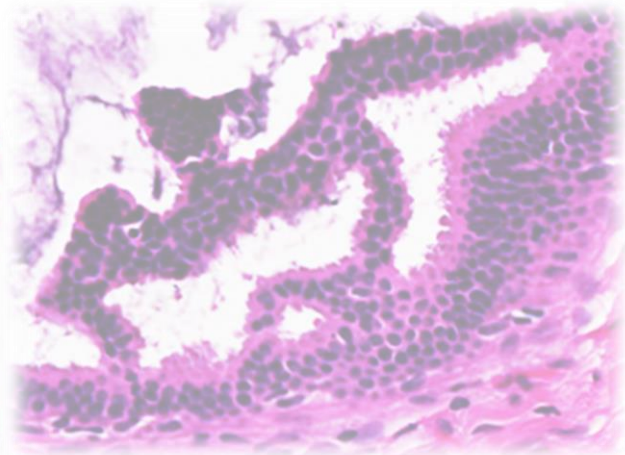
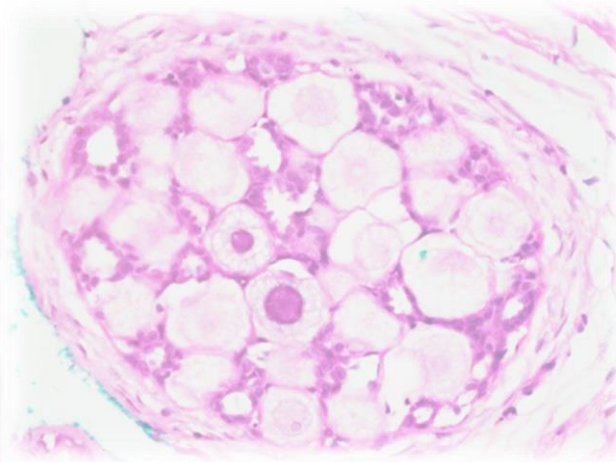
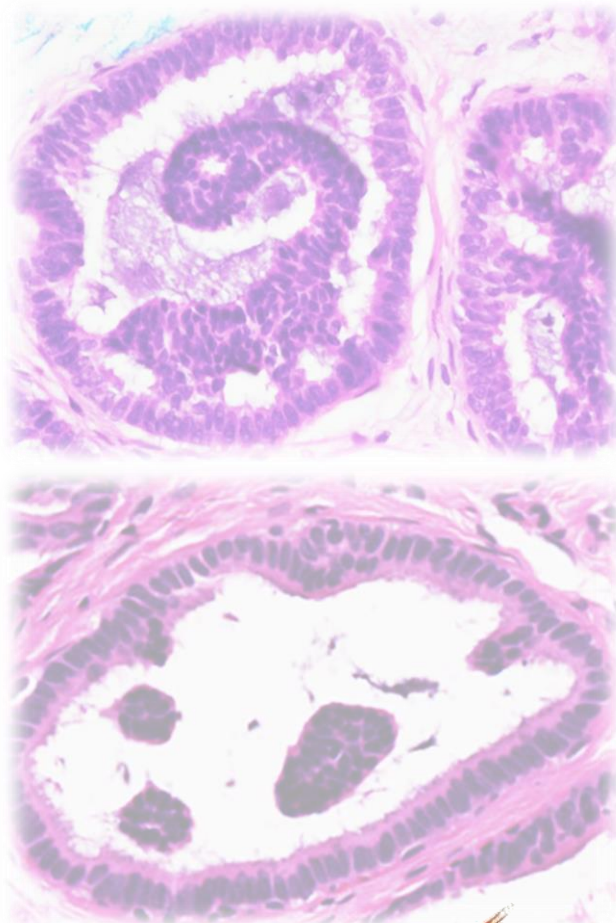
Yifoong Chia,¹ Aye Aye Thike,¹ Poh Yian Cheok,¹ Luke Yong-Zheng Chong,¹
Gary Man-Kit Tse,² Puay Hoon Tan¹

J Clin Pathol 2012;**65**:339–347.

Take-home messages

- ▶ Phyllodes tumours of the breast may express keratins in stromal cells on immunohistochemistry, albeit focal and patchy in distribution.
- ▶ CD34 stromal staining is associated with phyllodes tumour grade, with benign tumours showing a higher proportion of positivity.
- ▶ None of the phyllodes tumours display stromal p63 reactivity.
- ▶ On limited material such as core biopsies, focal keratin expression of a spindle cell breast tumour needs to be interpreted with caution, and should not be immediately concluded as a tumour of metaplastic origin.

 Breast
Pathology
Course 2018



Thank you!

