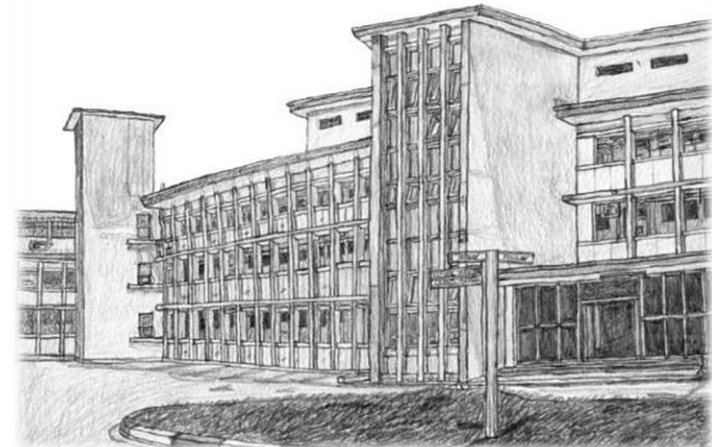


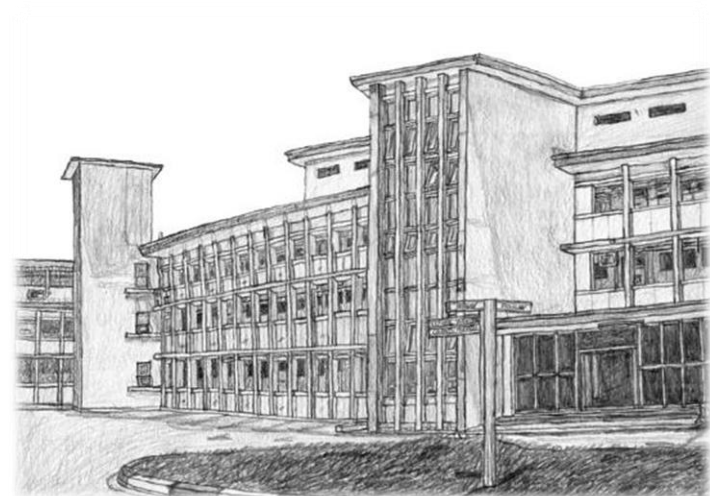
Case 8

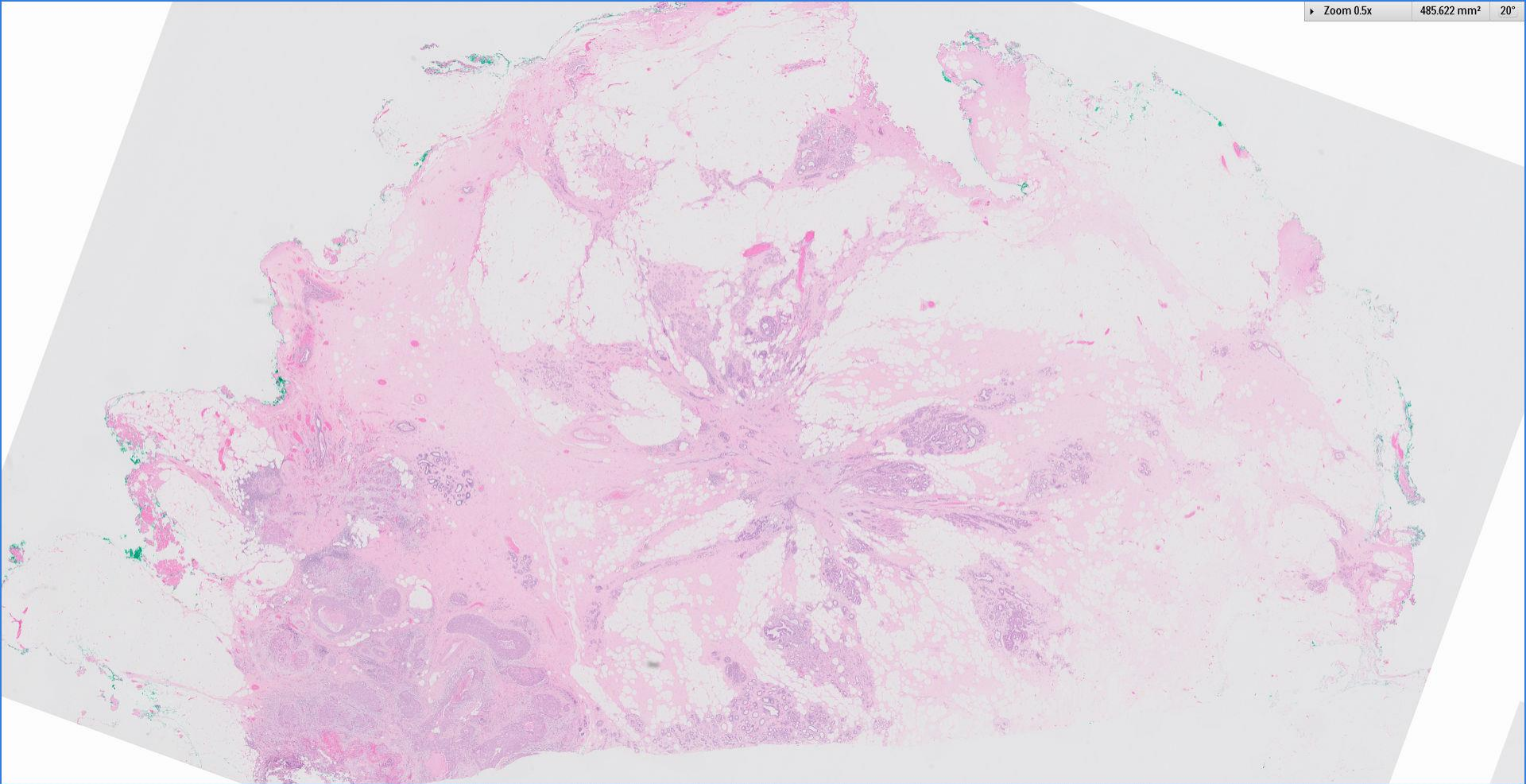
48 year old female.

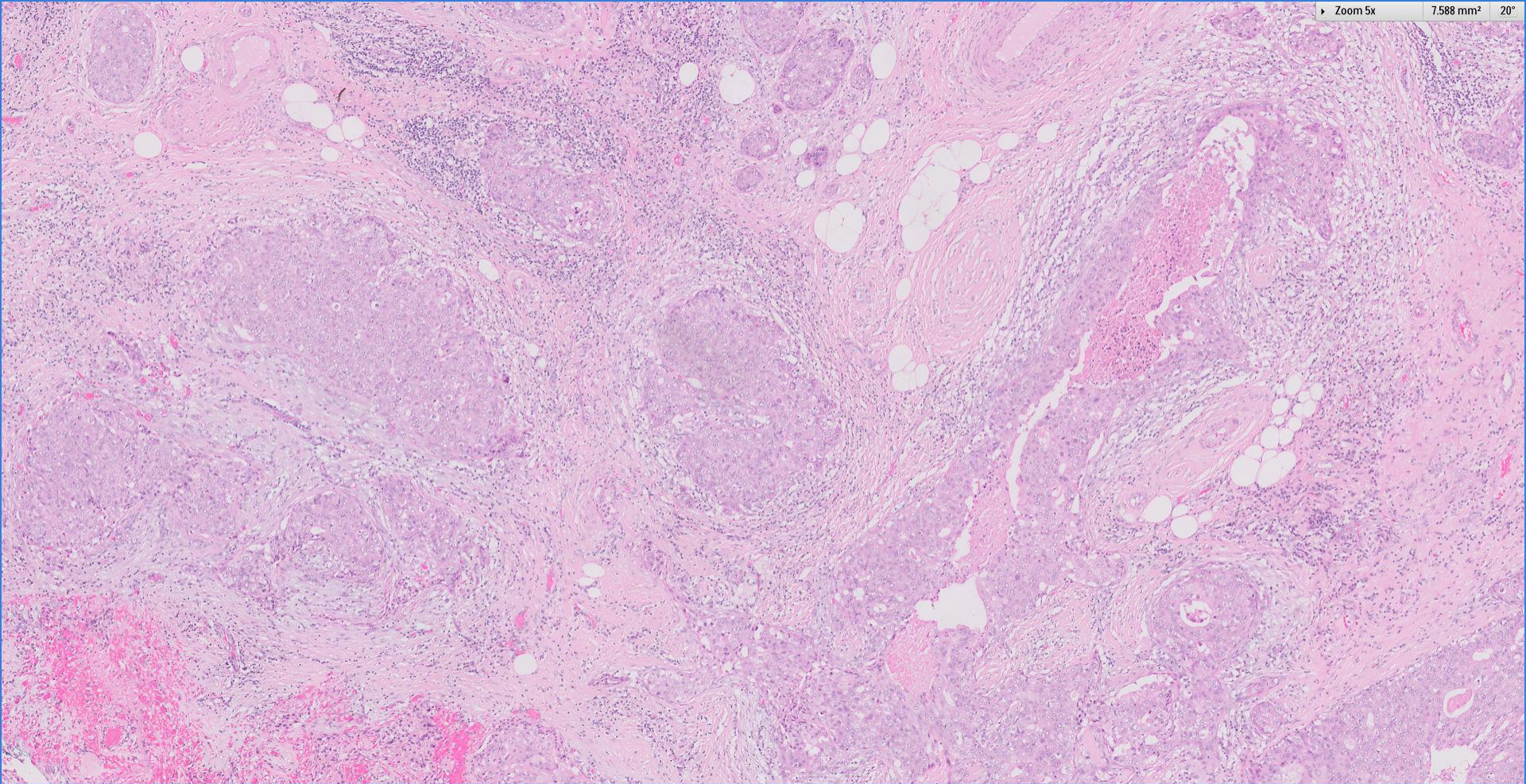
Excision biopsy, left breast lump.

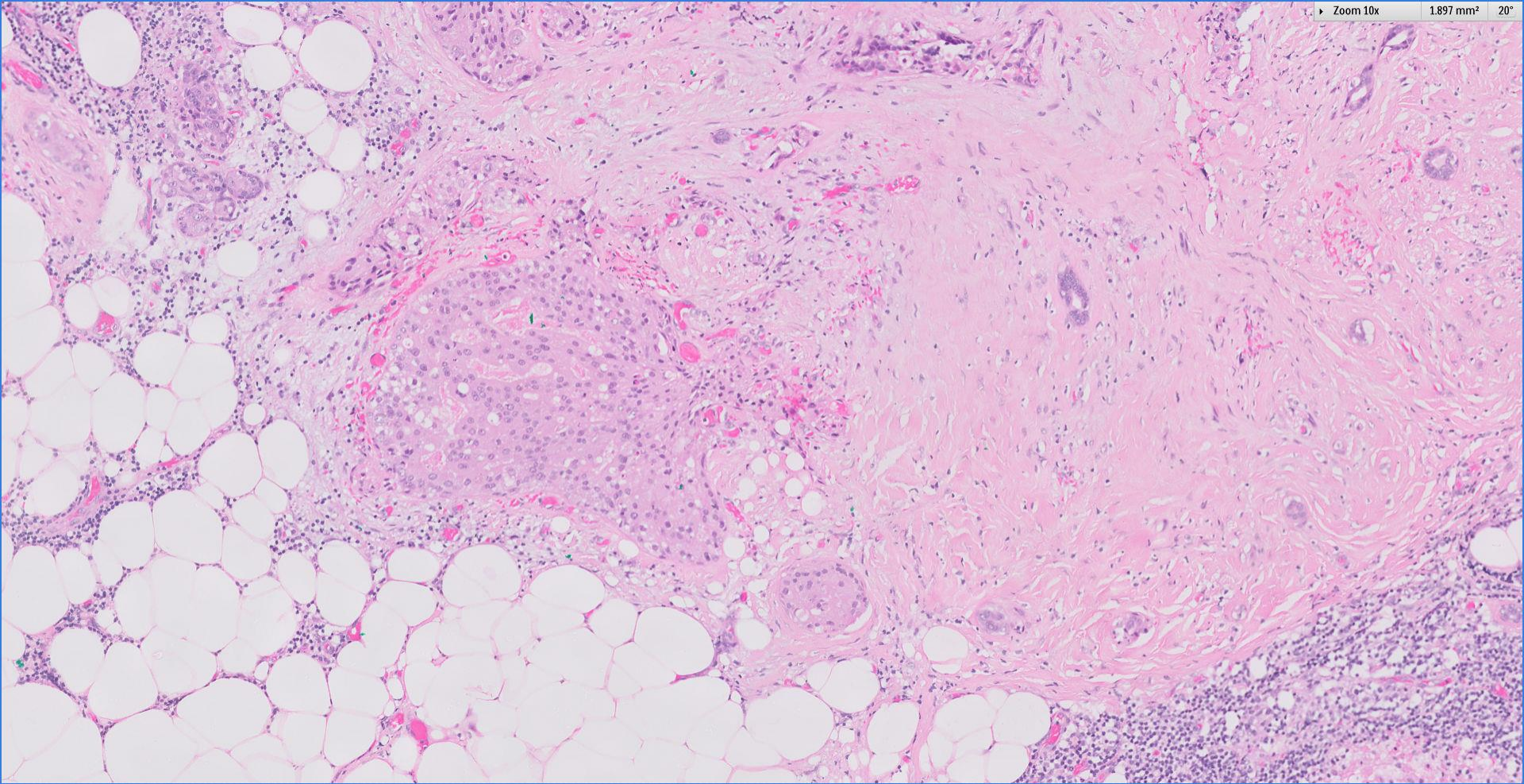


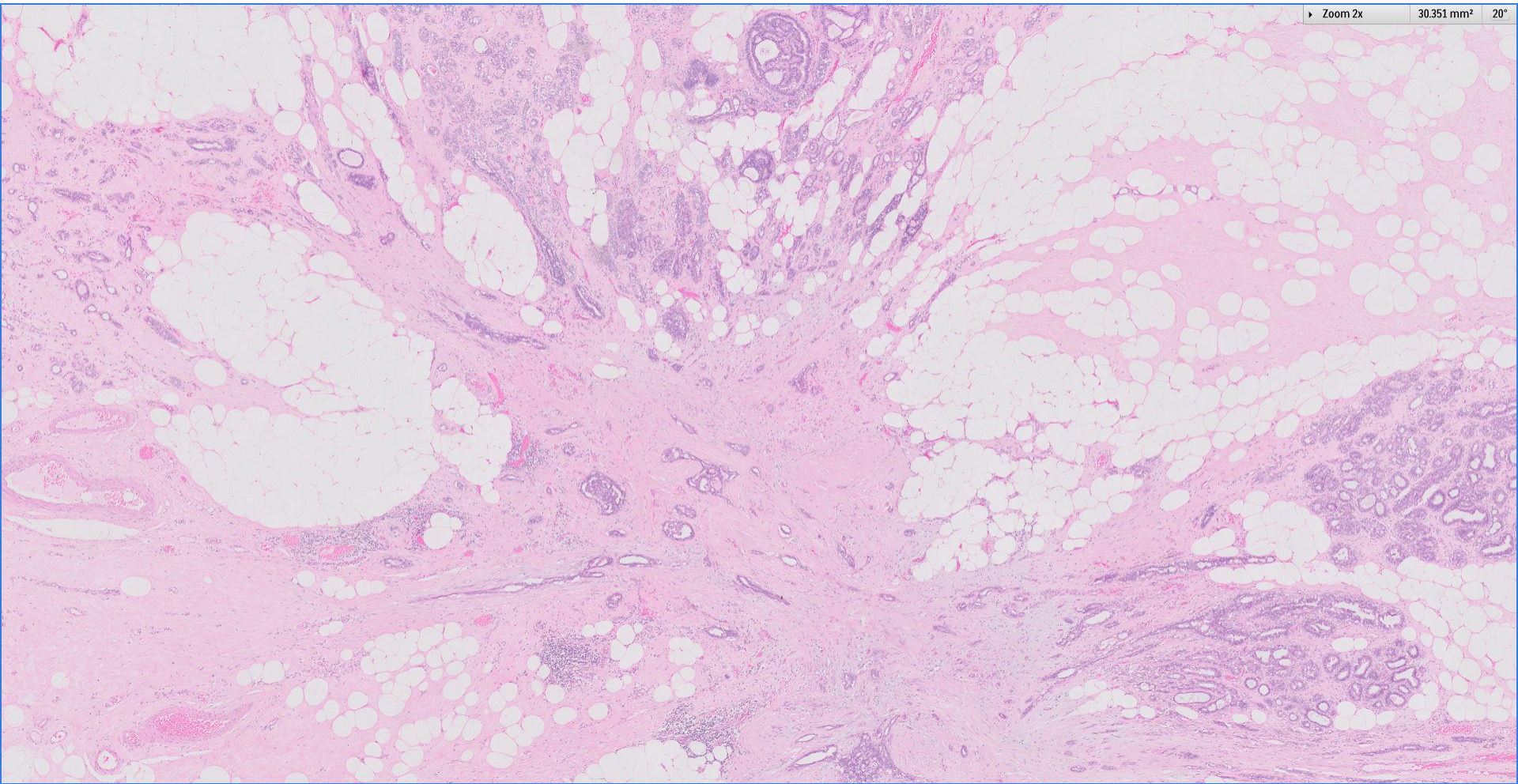
Section (A)



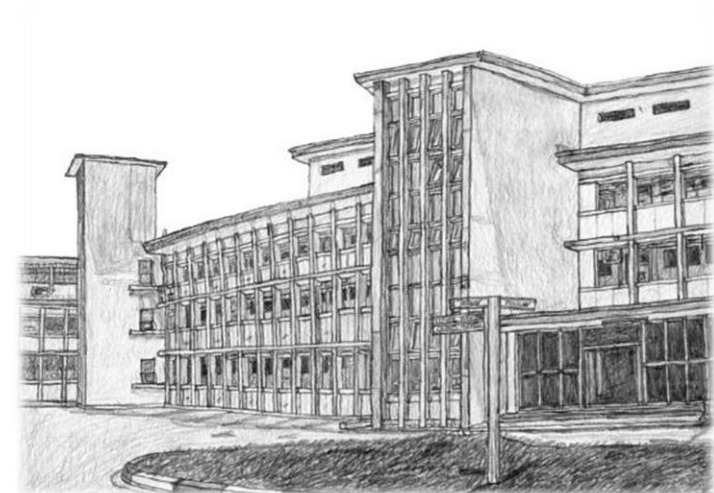


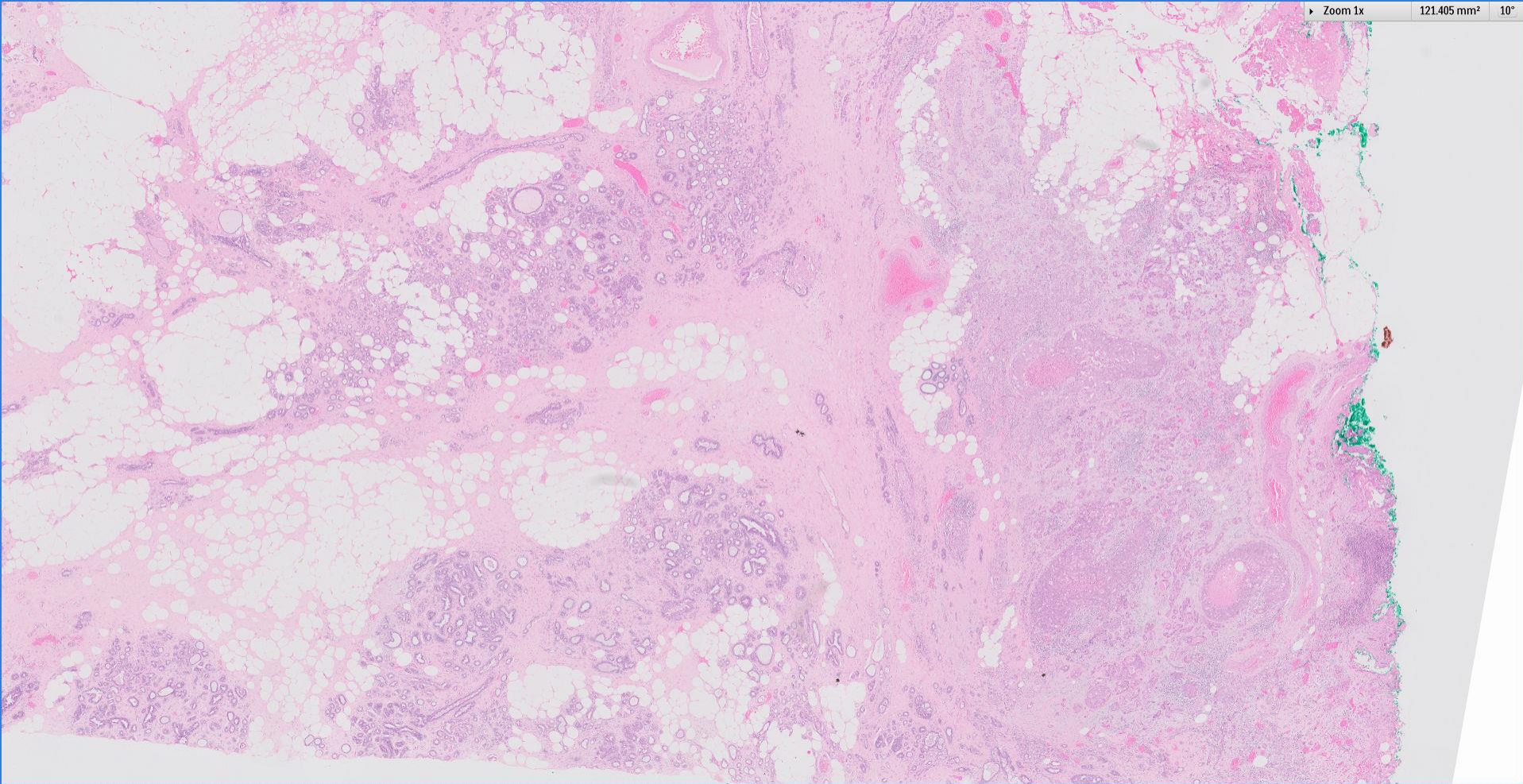


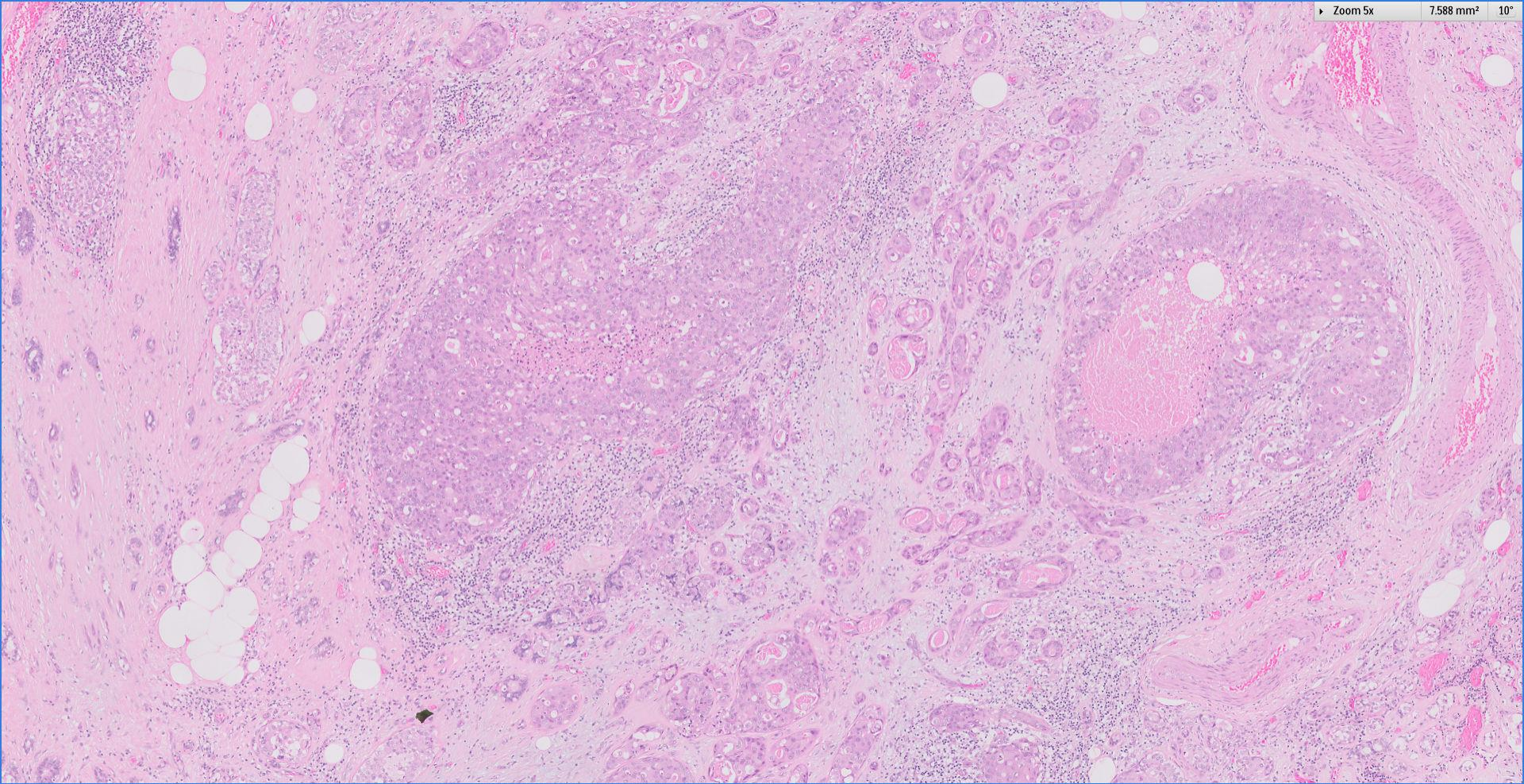


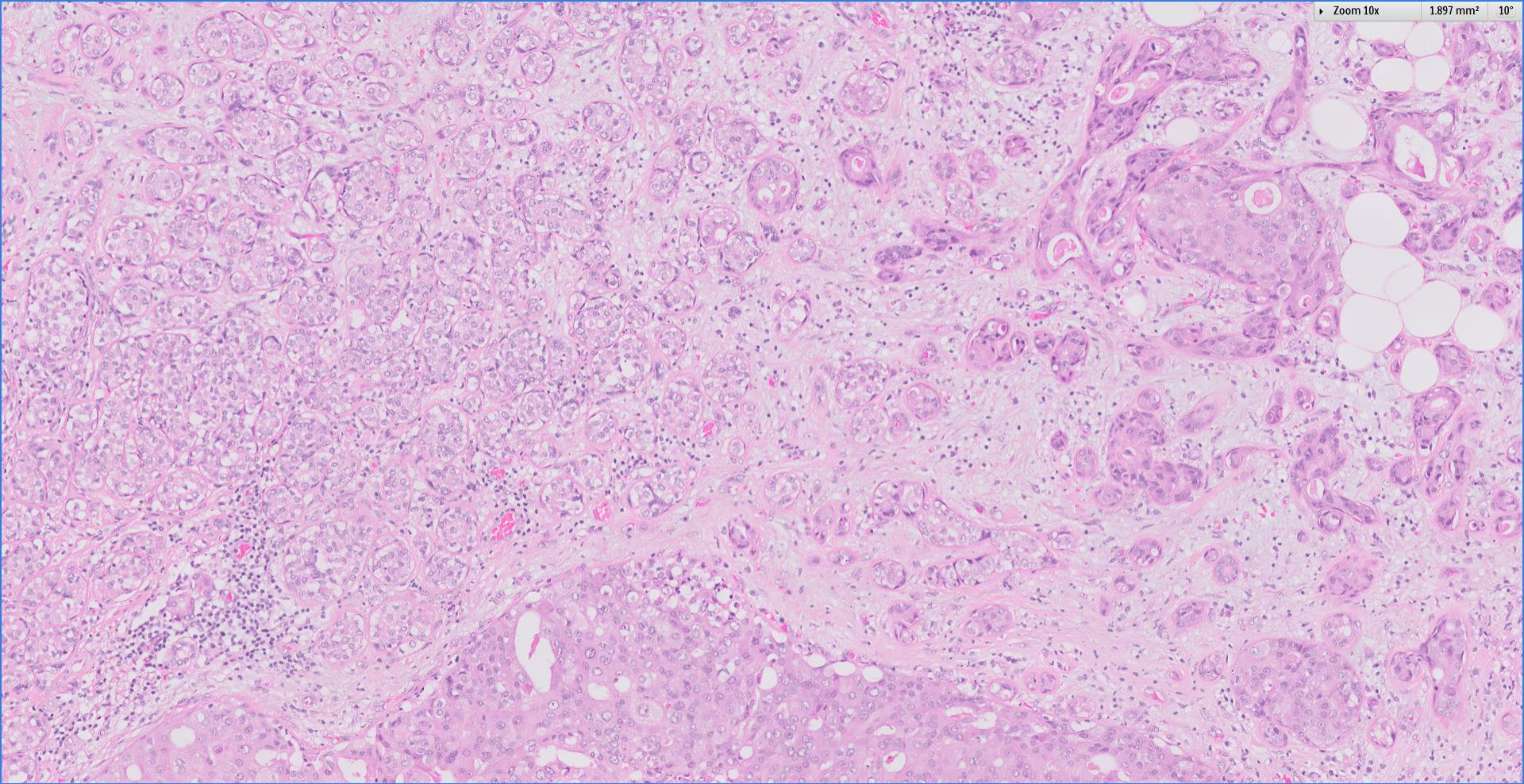


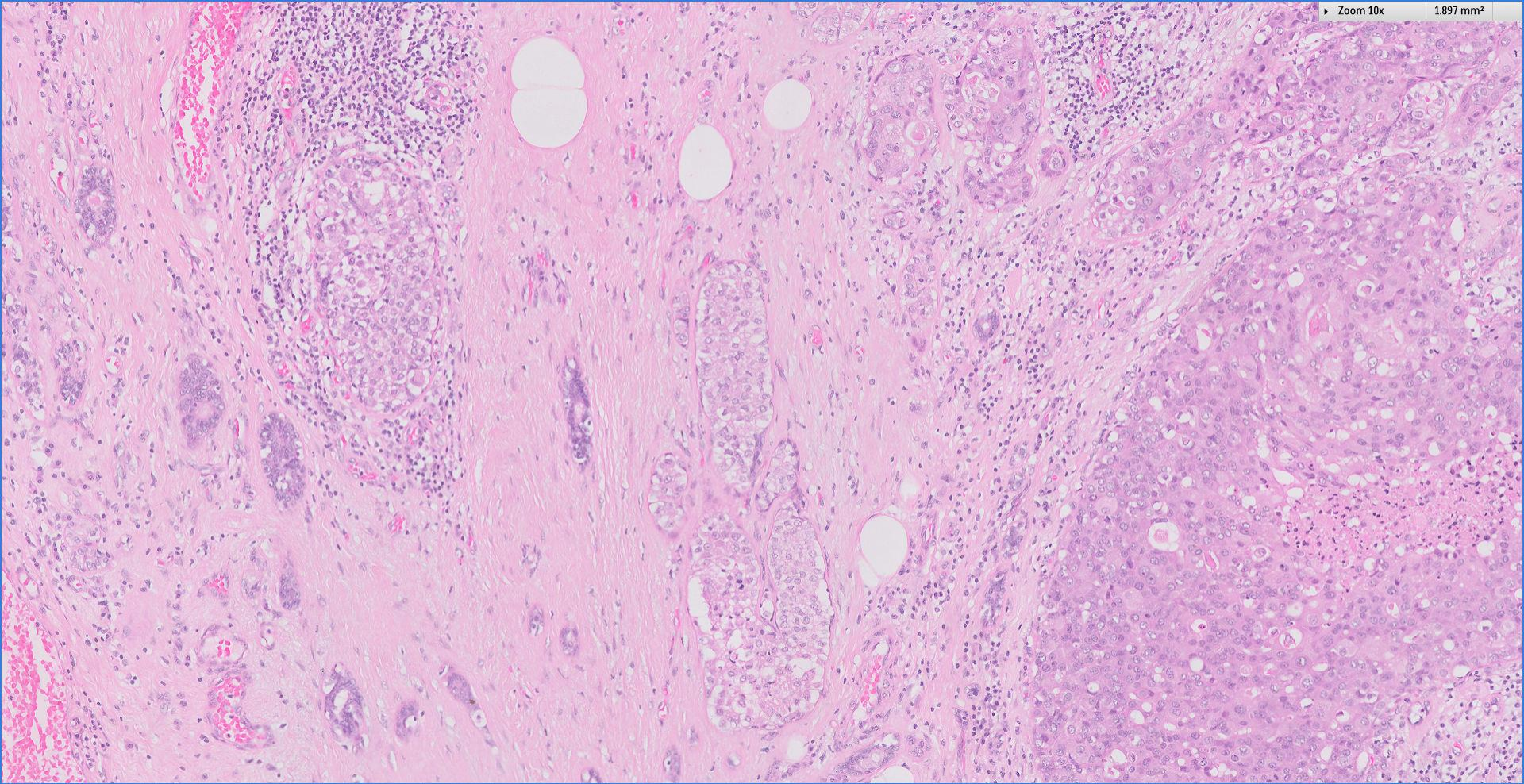
Section (B)



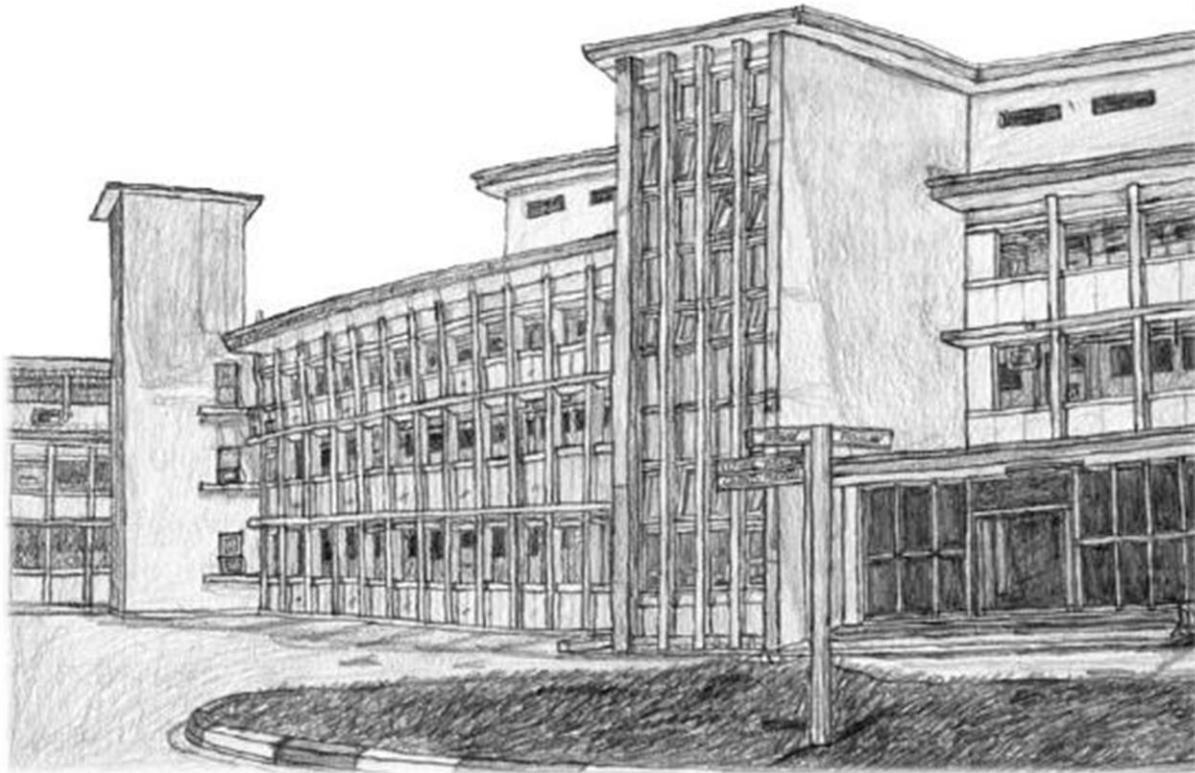








 Breast
Pathology
Course 2018



Singapore
General Hospital

SingHealth
Division of Pathology

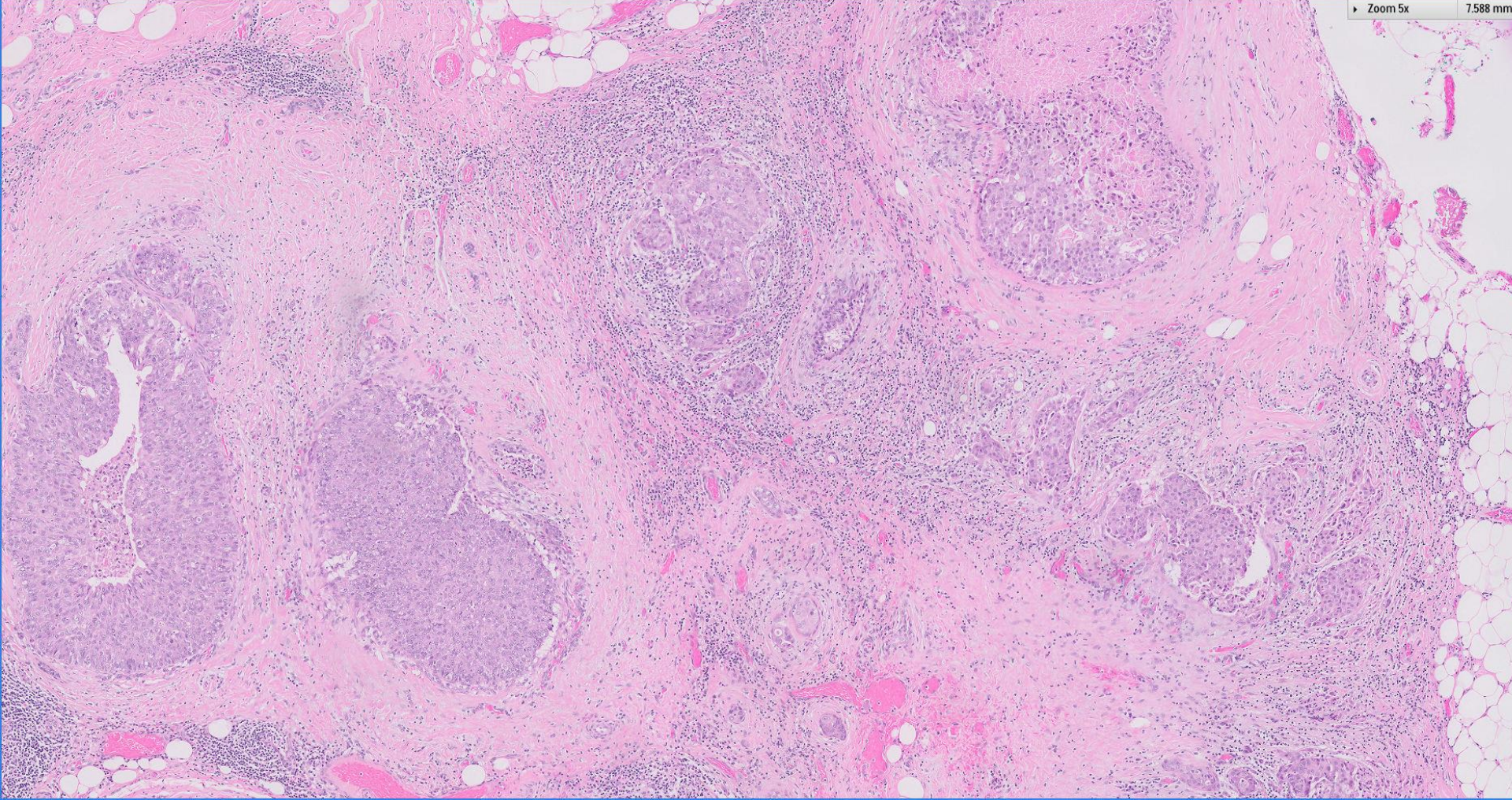


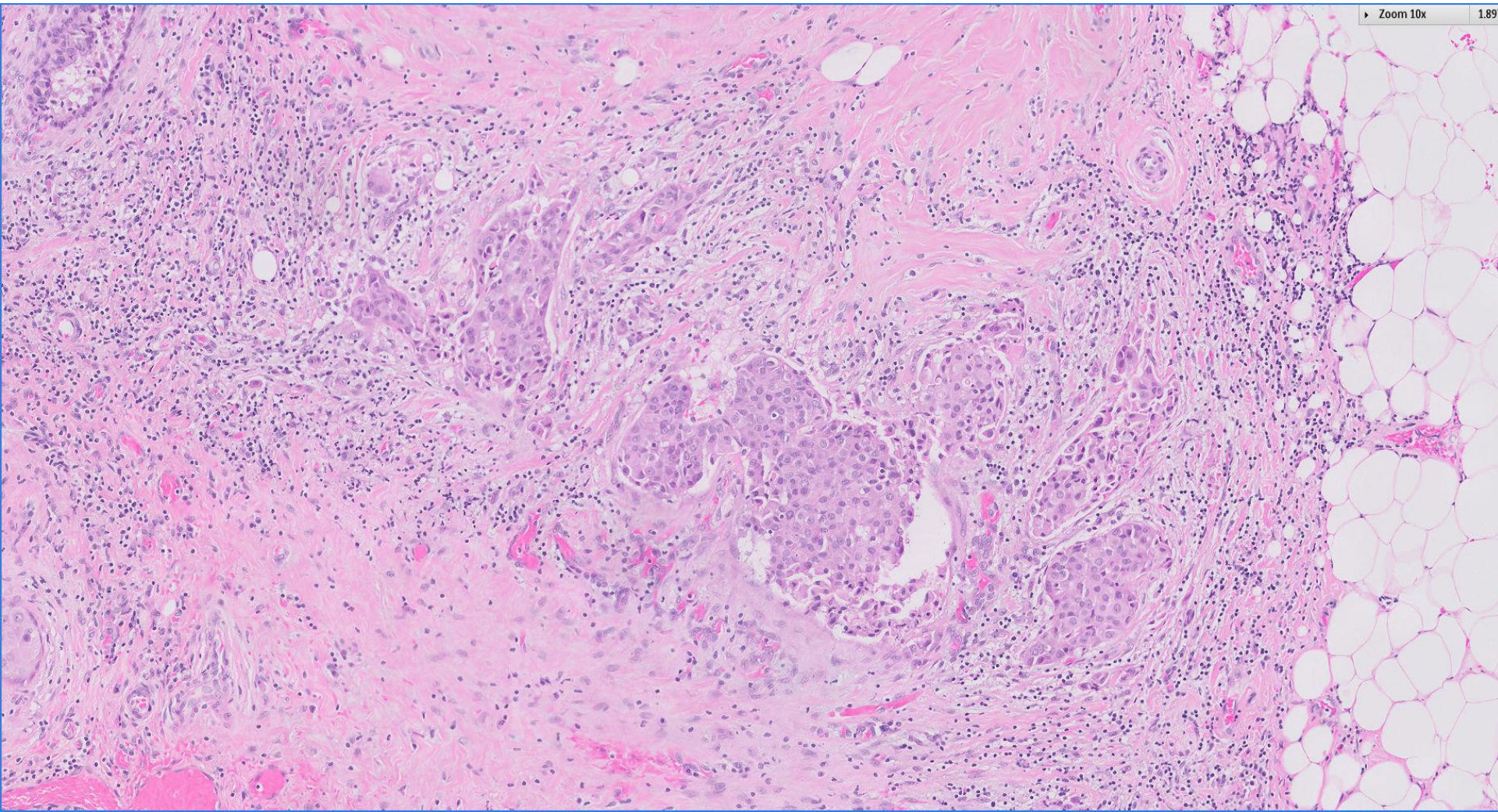
SingHealth DukeNUS
ACADEMIC MEDICAL CENTRE

PATHOLOGY

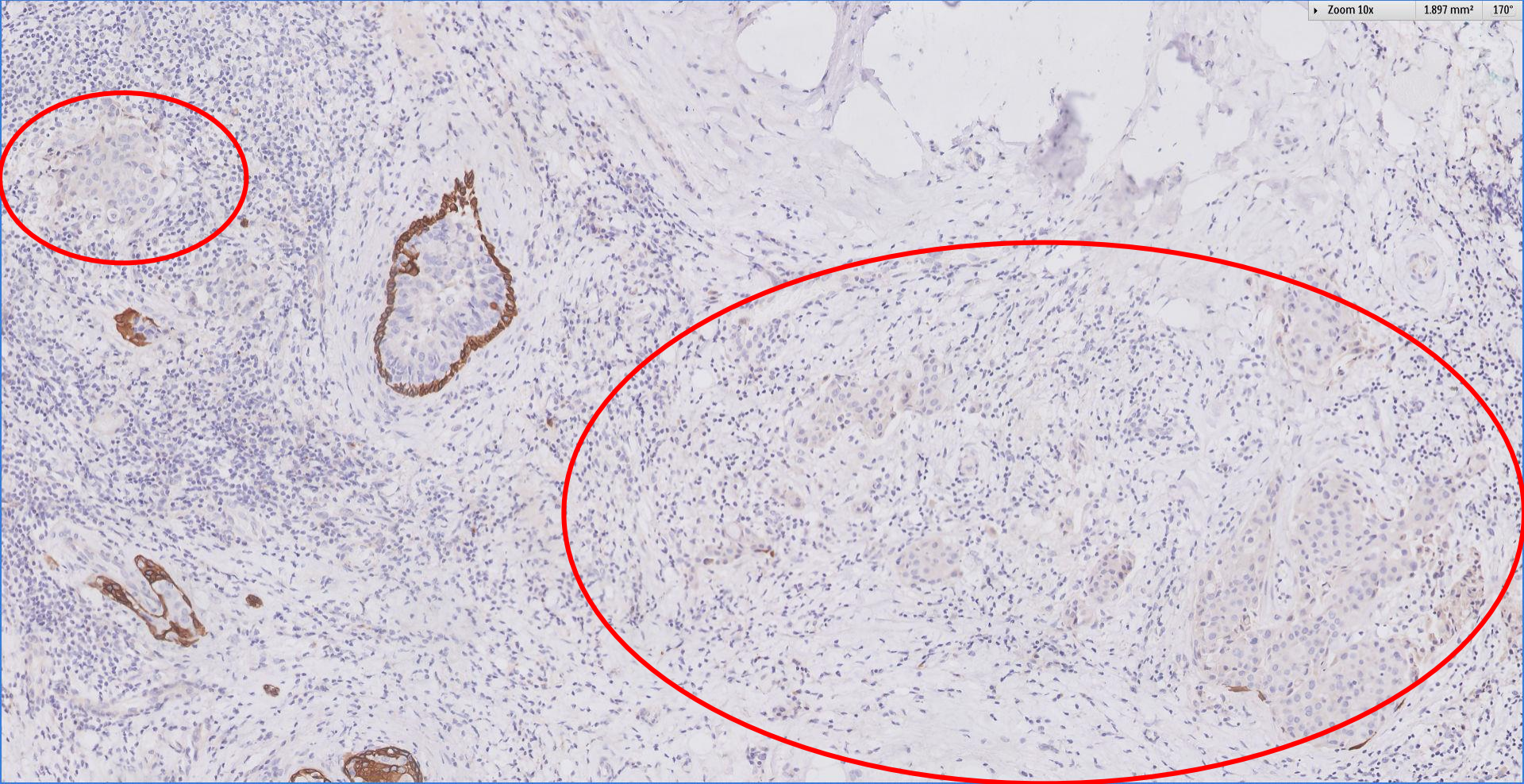
IAP

International Academy of Pathology
Singapore Division





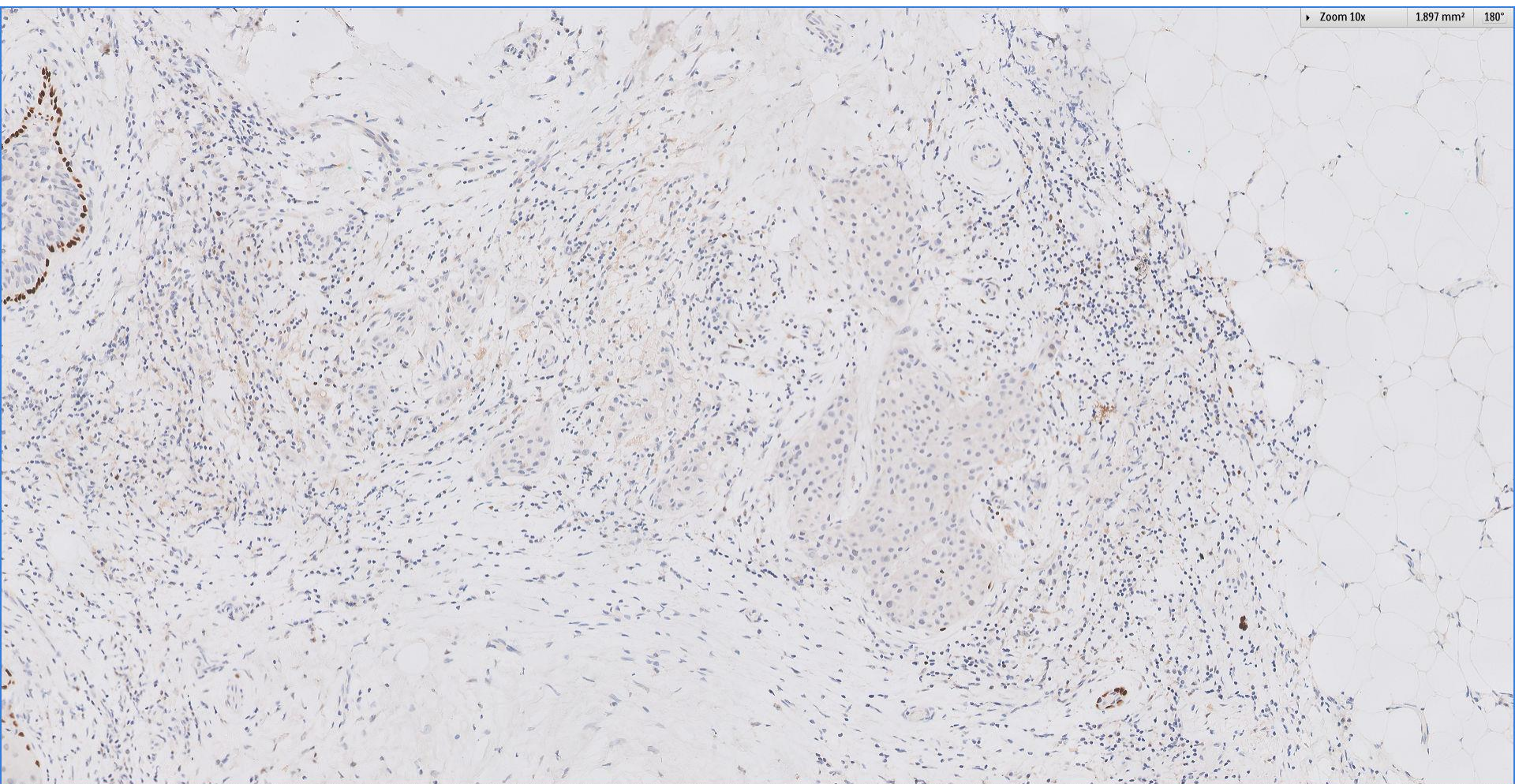
CK14



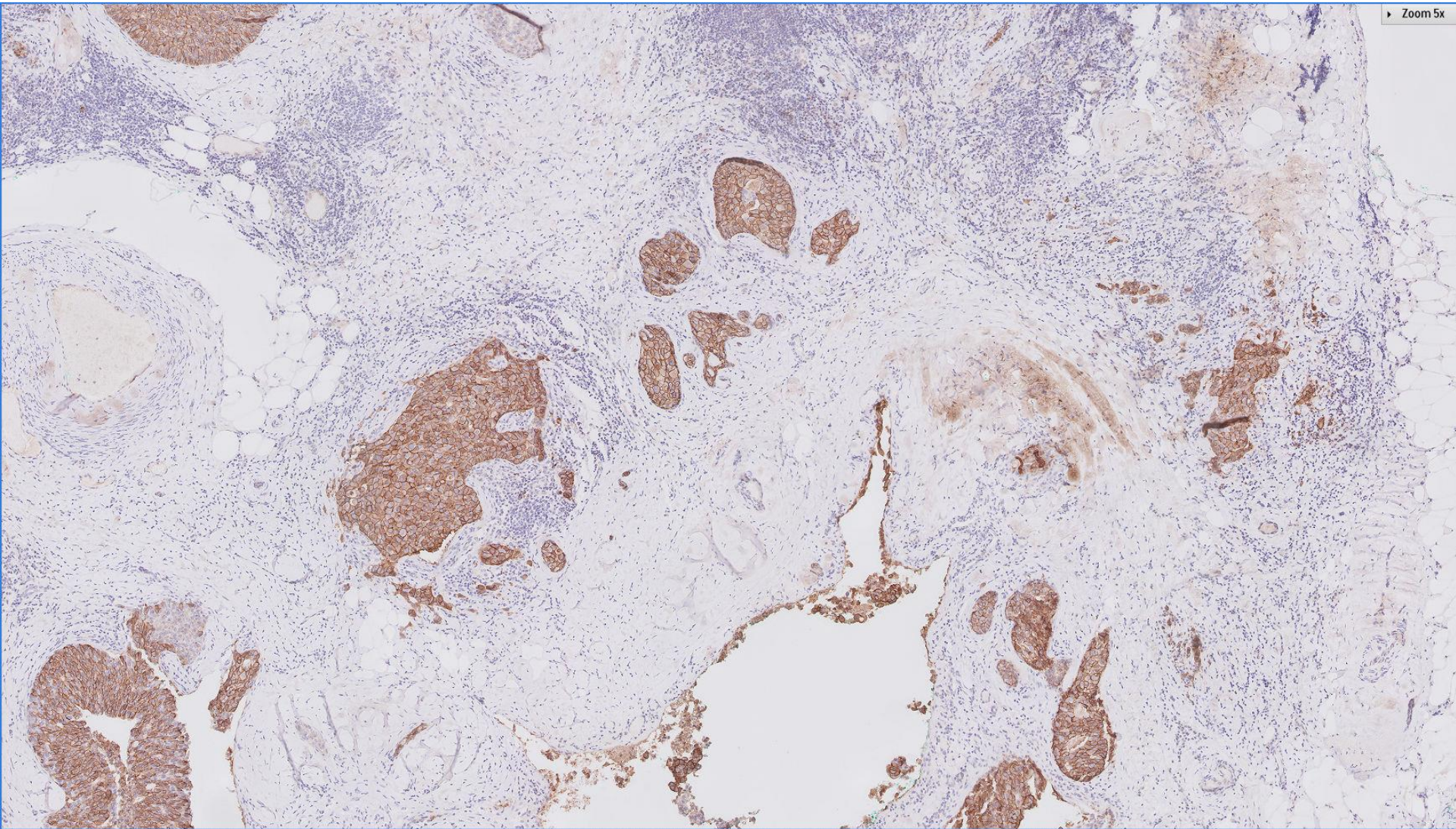
p63



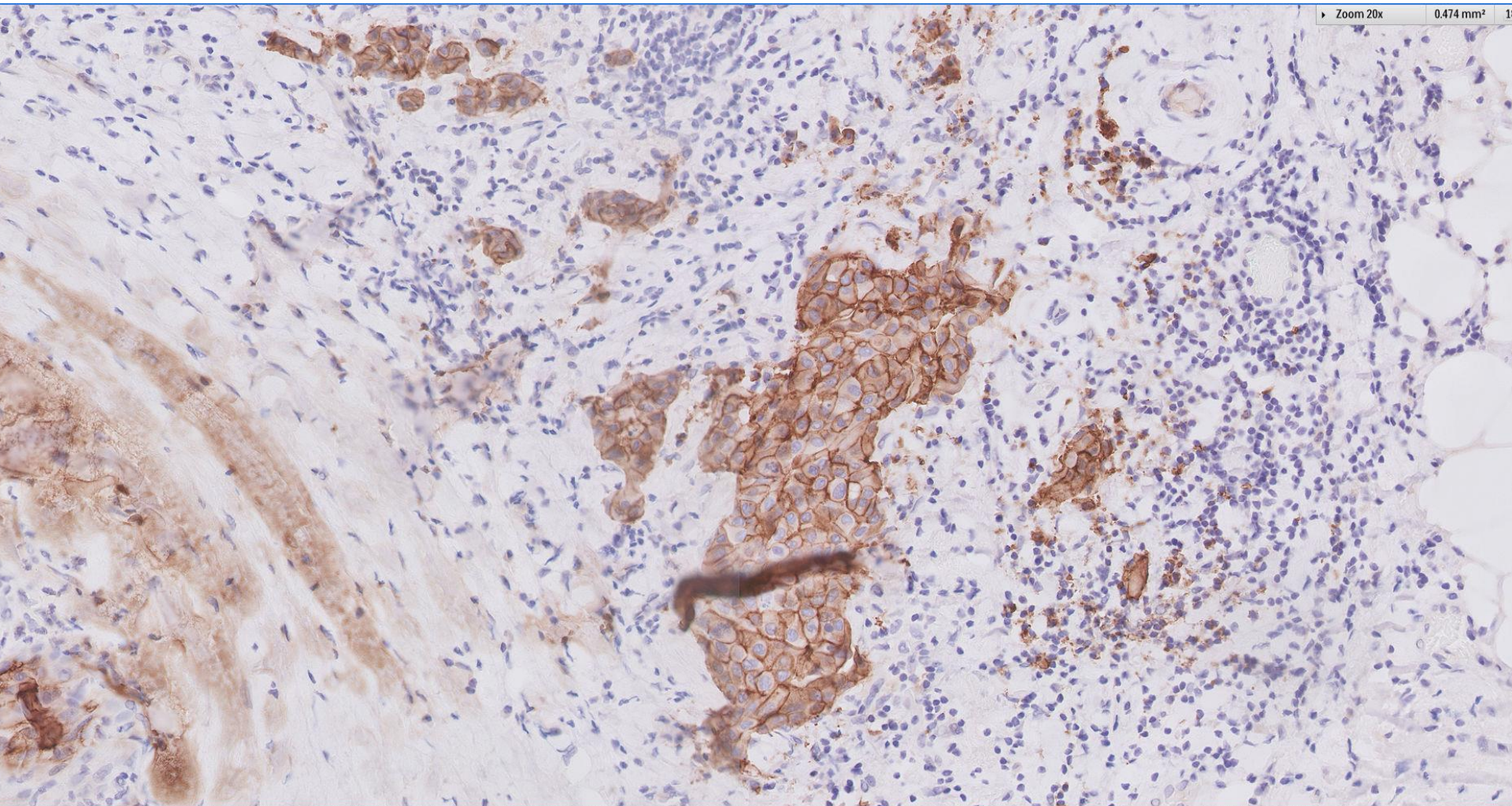
p63



cerbB2



cerbB2



Diagnosis

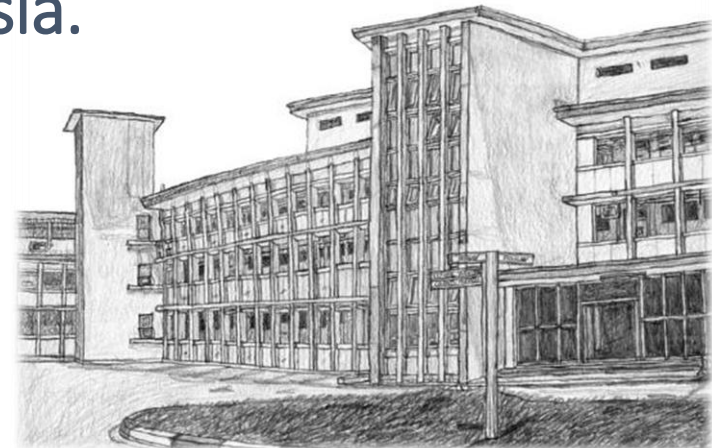
Excision biopsy, left breast lump:

Infiltrative ductal carcinoma, grade 2, 6mm.

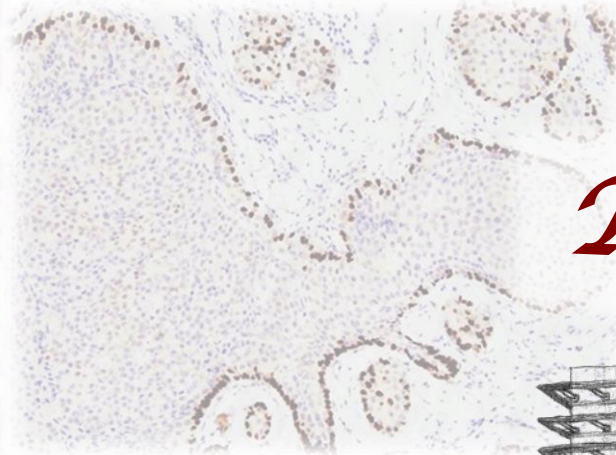
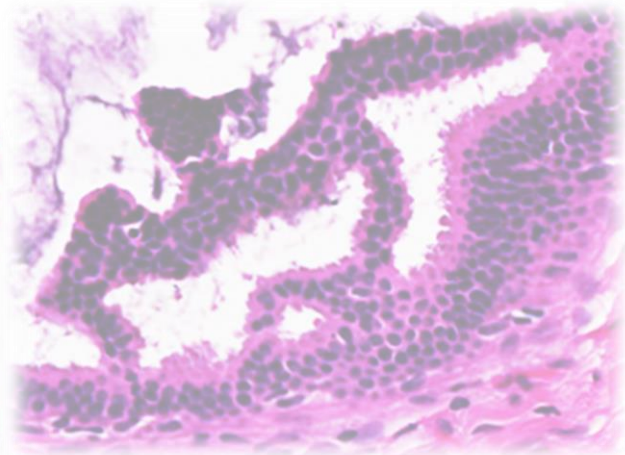
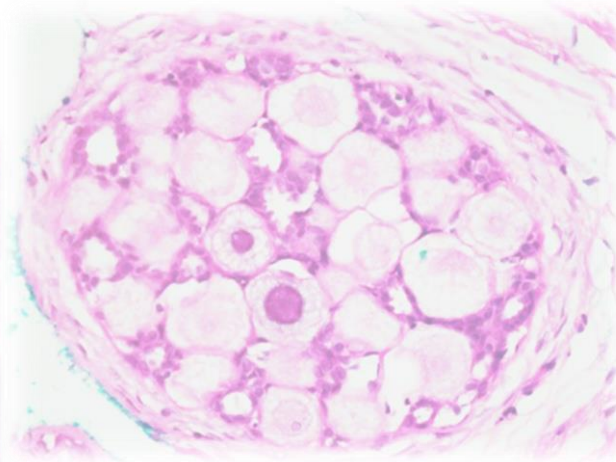
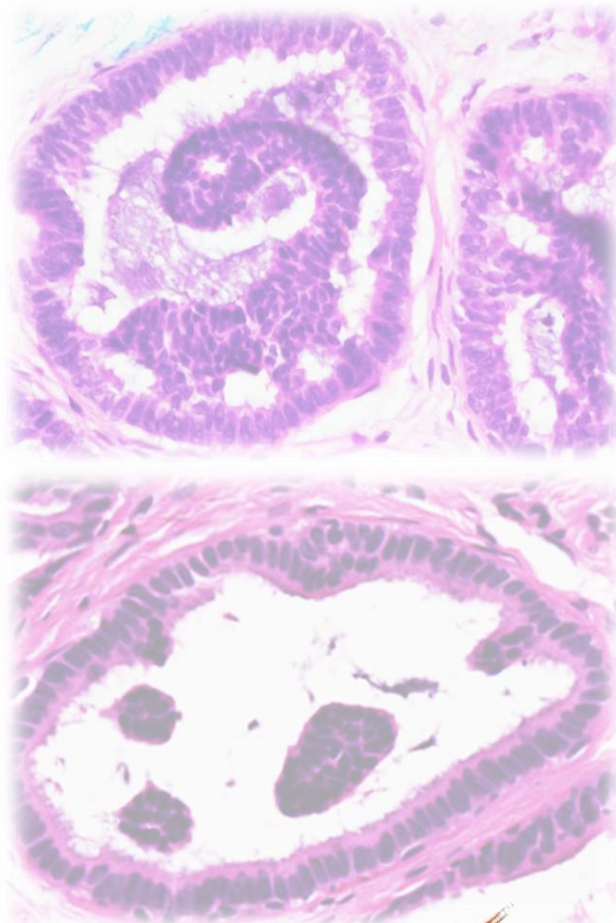
ER negative, PR negative, cerbB2 positive (3+).

Extensive DCIS, intermediate to high nuclear grade, with necrosis, without calcifications, 18mm.

Background radial sclerosing lesion with sclerosing adenosis and lobular neoplasia.



 Breast
Pathology
Course 2018



Thank you!

