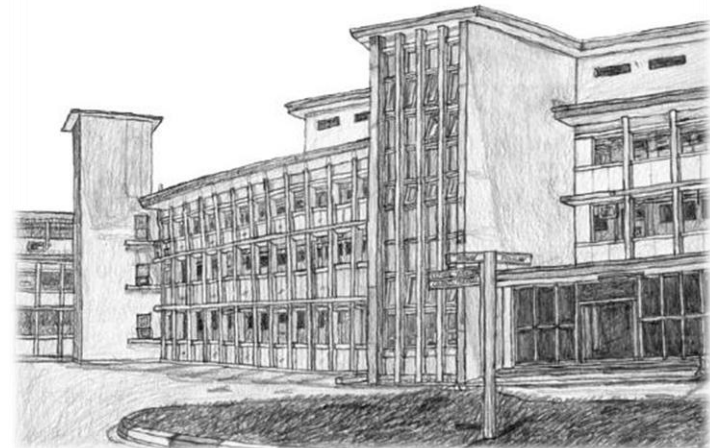
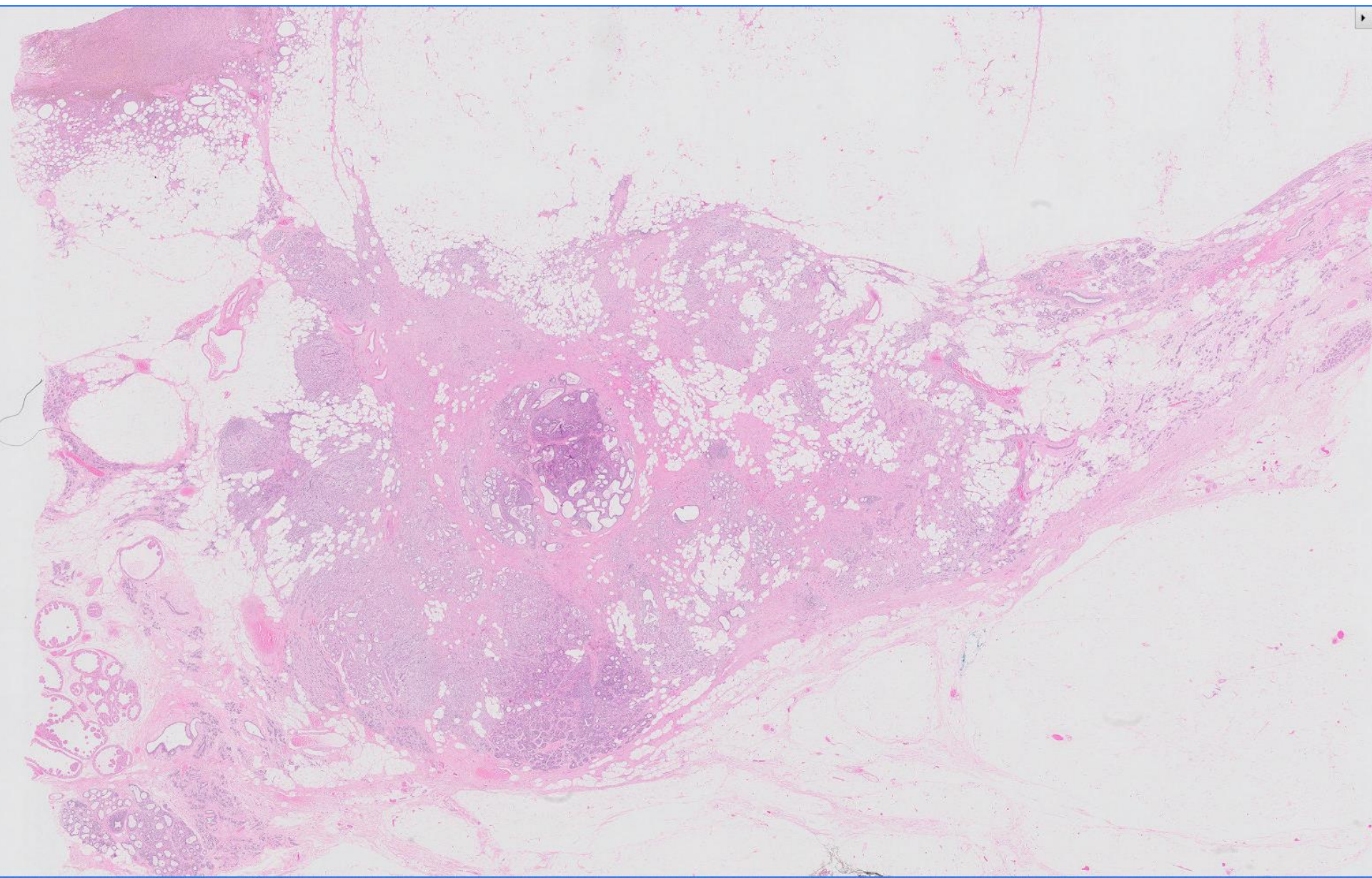


## Case 7

44 year old female.

Left breast wide excision contained a 4.3cm tumour.  
Section from the tumour.

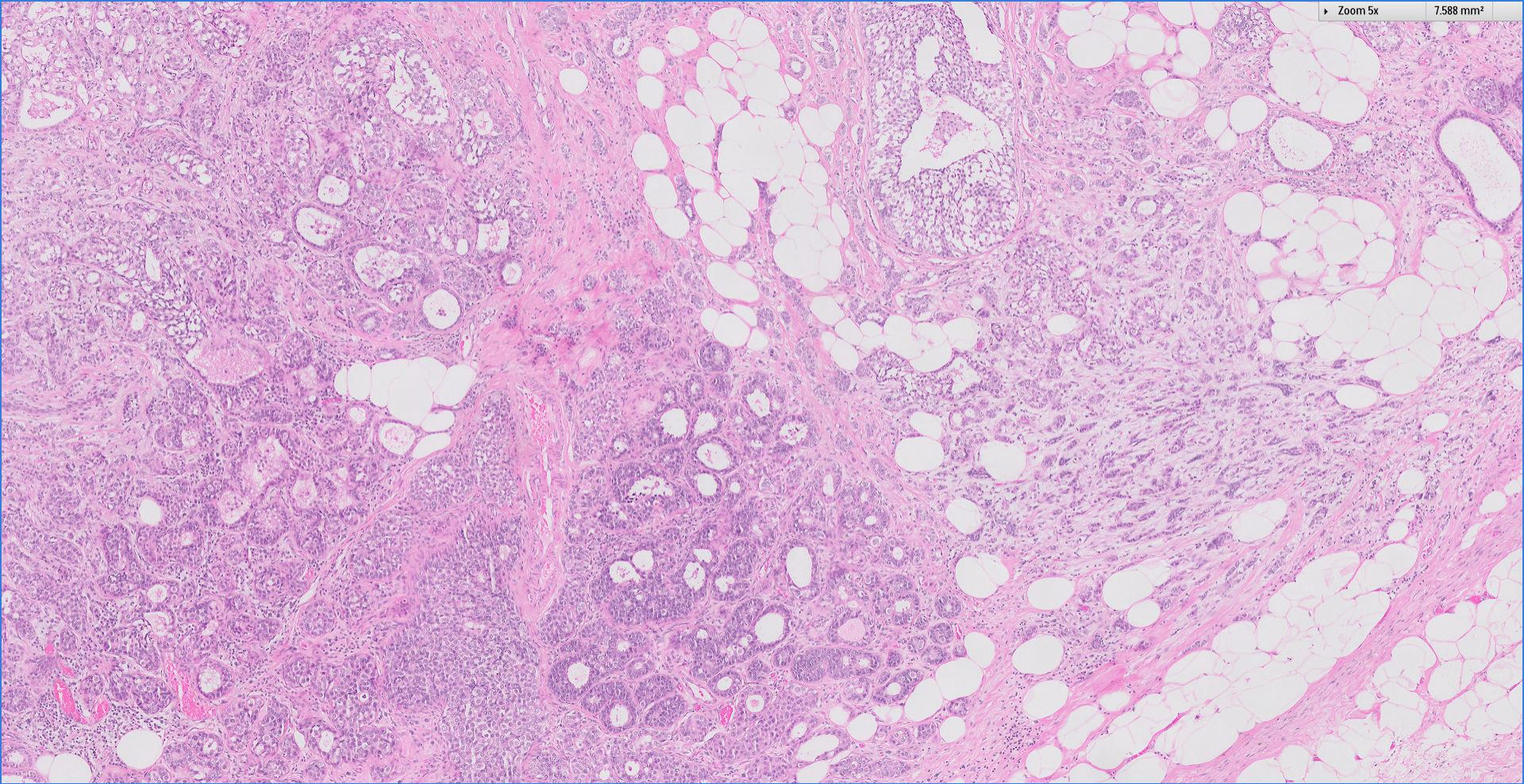






Zoom 5x

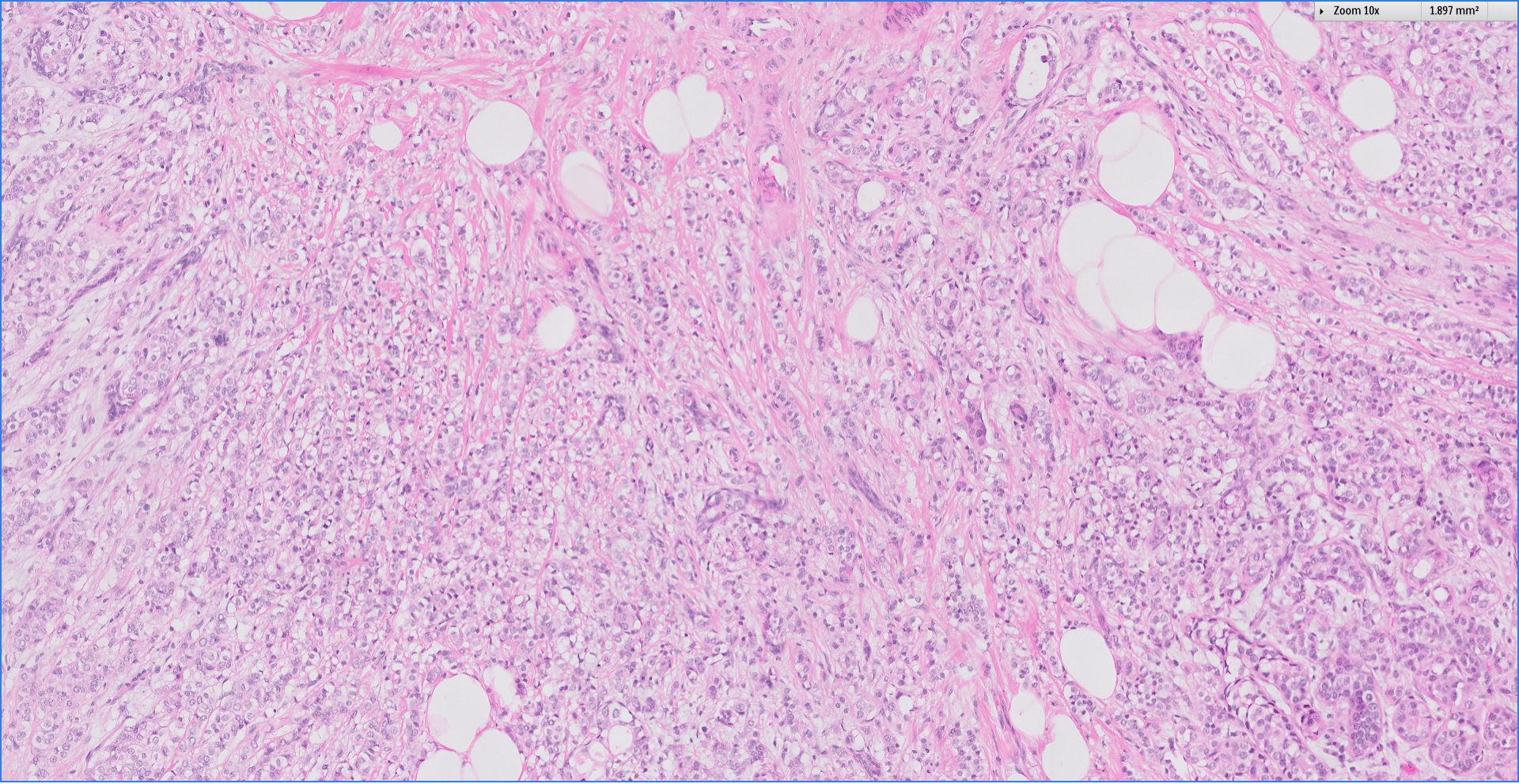
7.588 mm<sup>2</sup>





Zoom 10x

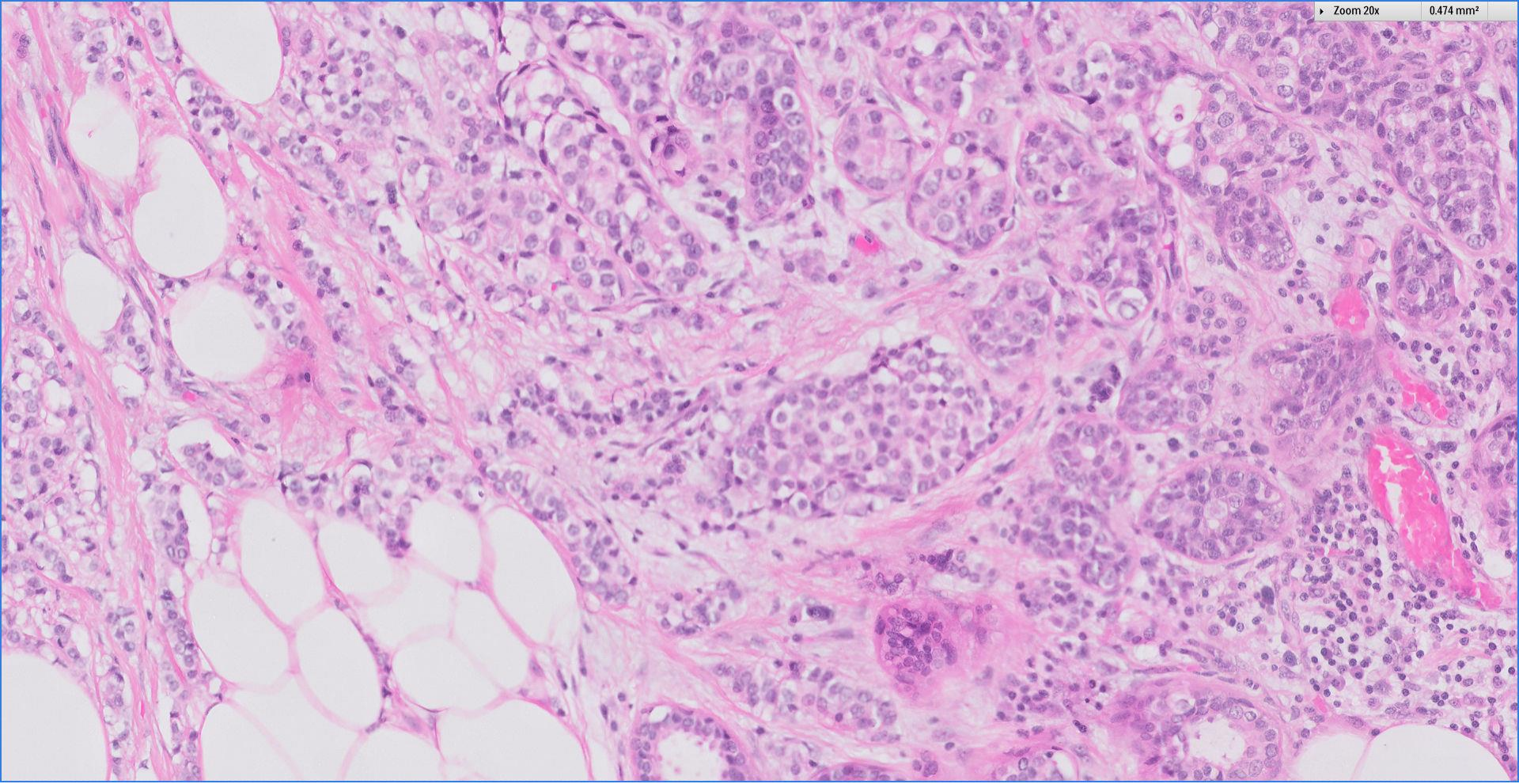
1.897 mm<sup>2</sup>



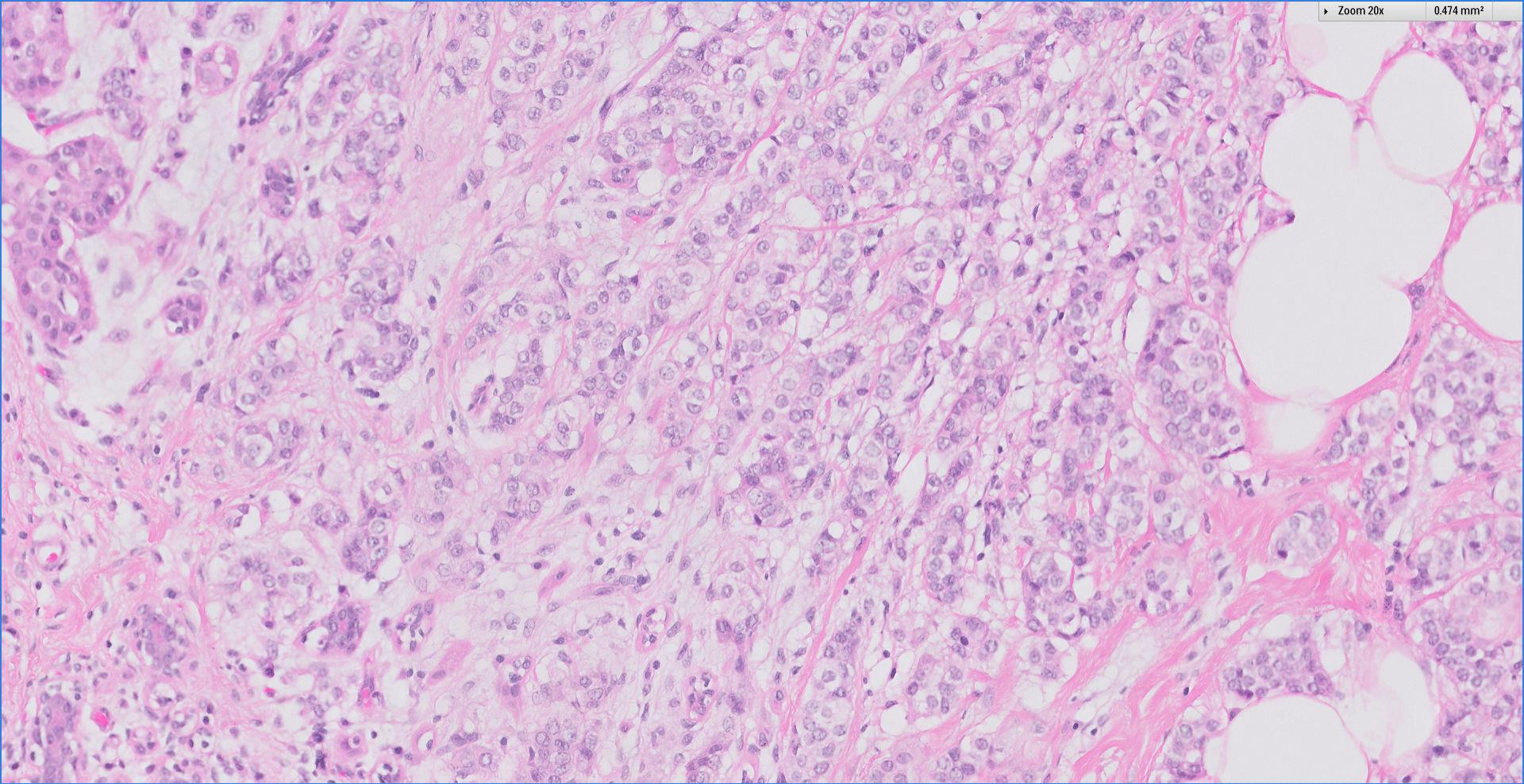


Zoom 20x

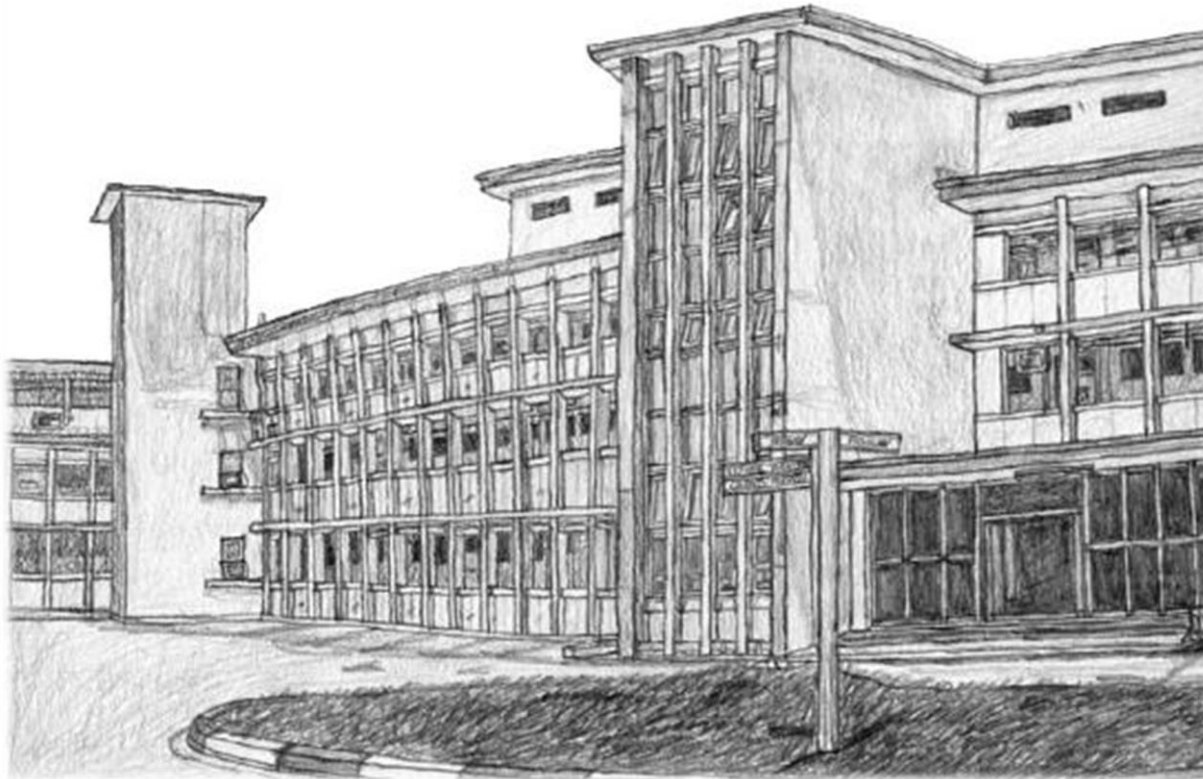
0.474 mm<sup>2</sup>







 Breast  
Pathology  
Course 2018



Singapore  
General Hospital  
SingHealth  
Division of Pathology



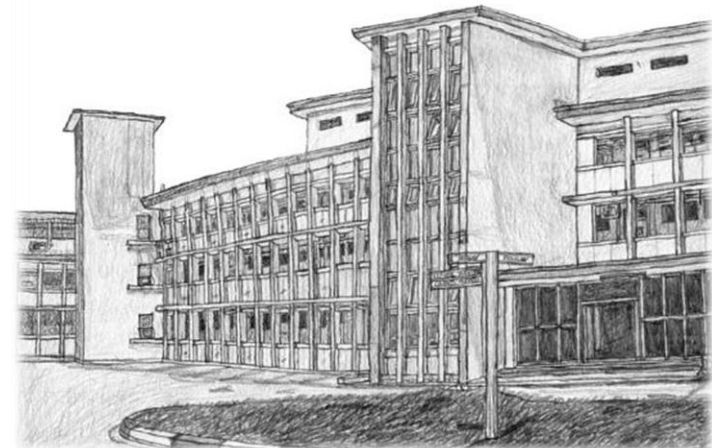


# Diagnosis

Left breast wide excision ~

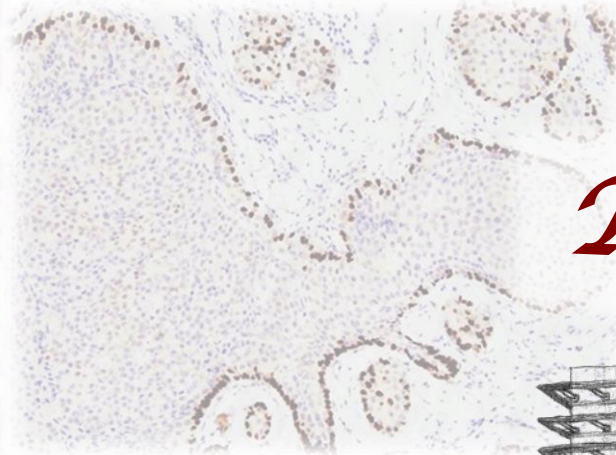
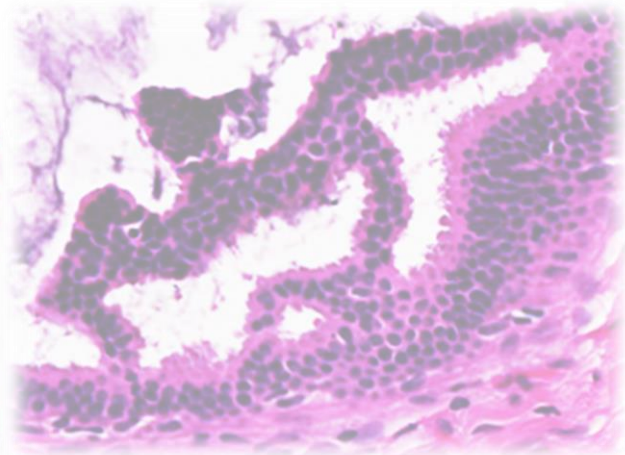
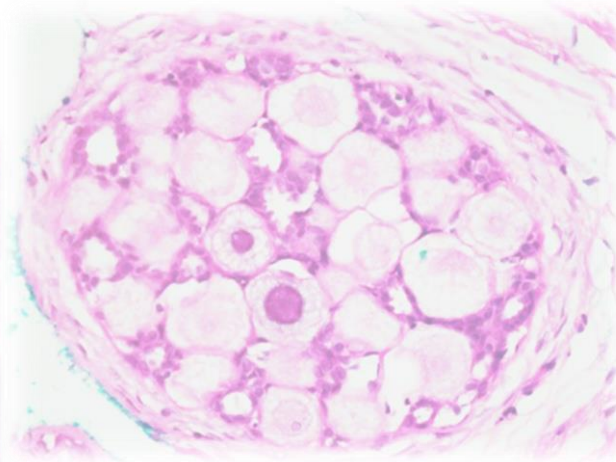
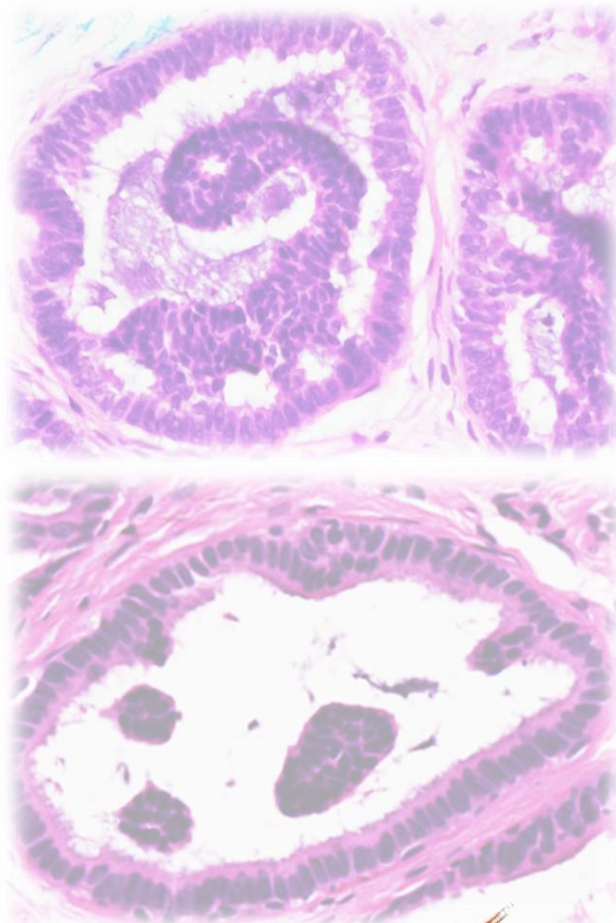
Invasive carcinoma with mixed ductal and lobular features, 43mm,  
grade 2.

Low grade ductal carcinoma in situ and lobular carcinoma in situ.





 Breast  
Pathology  
Course 2018

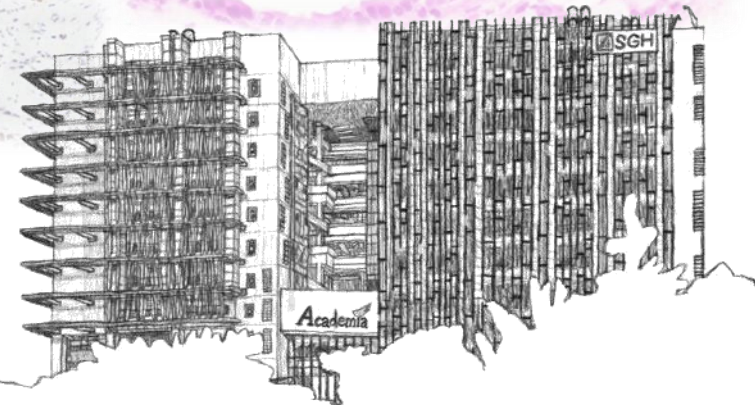


*Thank you!*

 Singapore  
General Hospital  
SingHealth  
Division of Pathology

 SingHealth DukeNUS  
ACADEMIC MEDICAL CENTRE  
**PATHOLOGY**

 IAP  
International Academy of Pathology  
Singapore Division



THE ACADEMIA,  
SINGAPORE GENERAL HOSPITAL 09.05.2014

*Handwritten signature*