

Case 37

63 year old Chinese female.

Left breast hookwire localization excision biopsy.

Previous core biopsy diagnosed a 'sclerotic lesion with distorted glands'.



Singapore
General Hospital

SingHealth

Division of Pathology



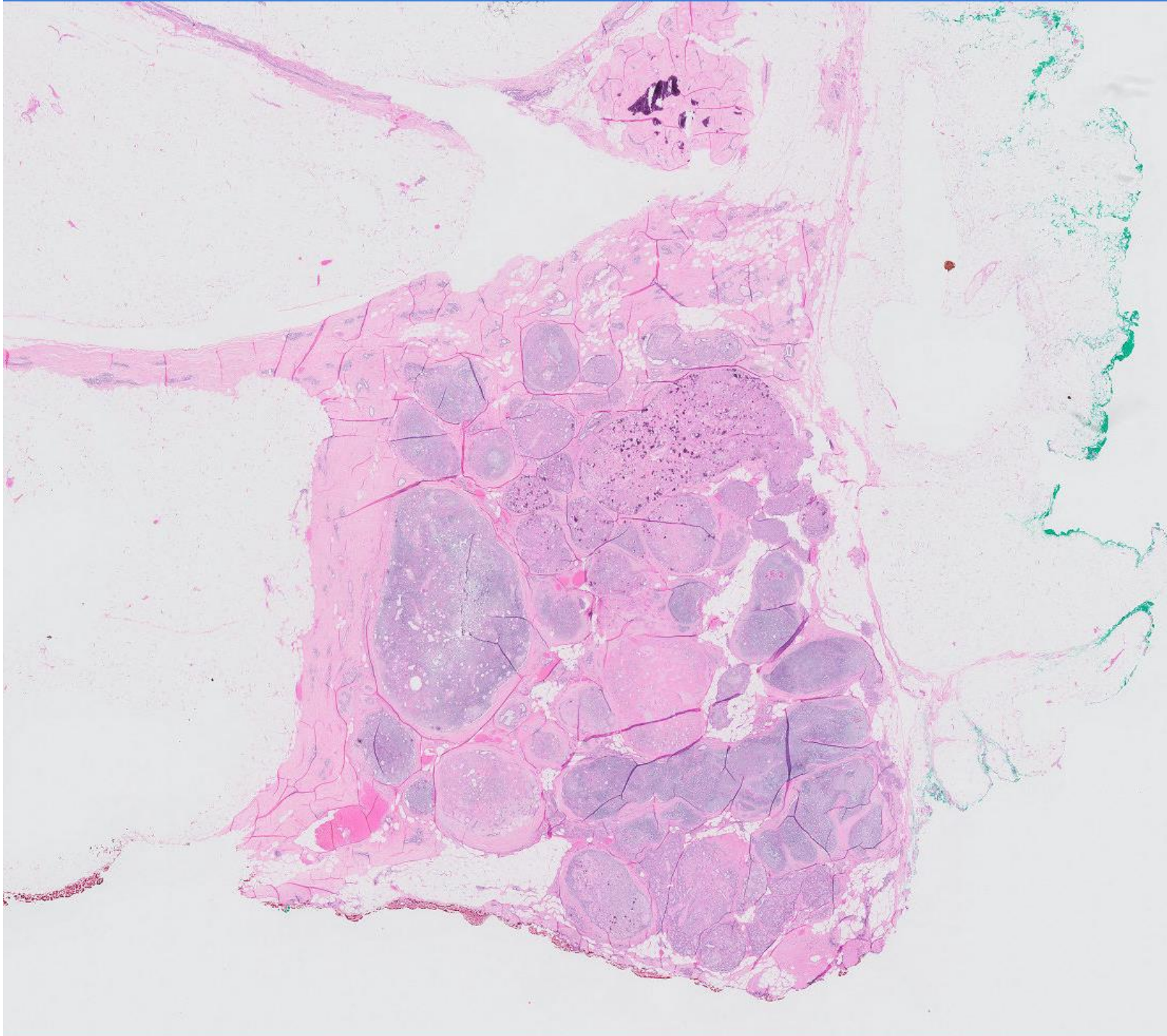
PATHOLOGY

IAP

International Academy of Pathology
Singapore Division

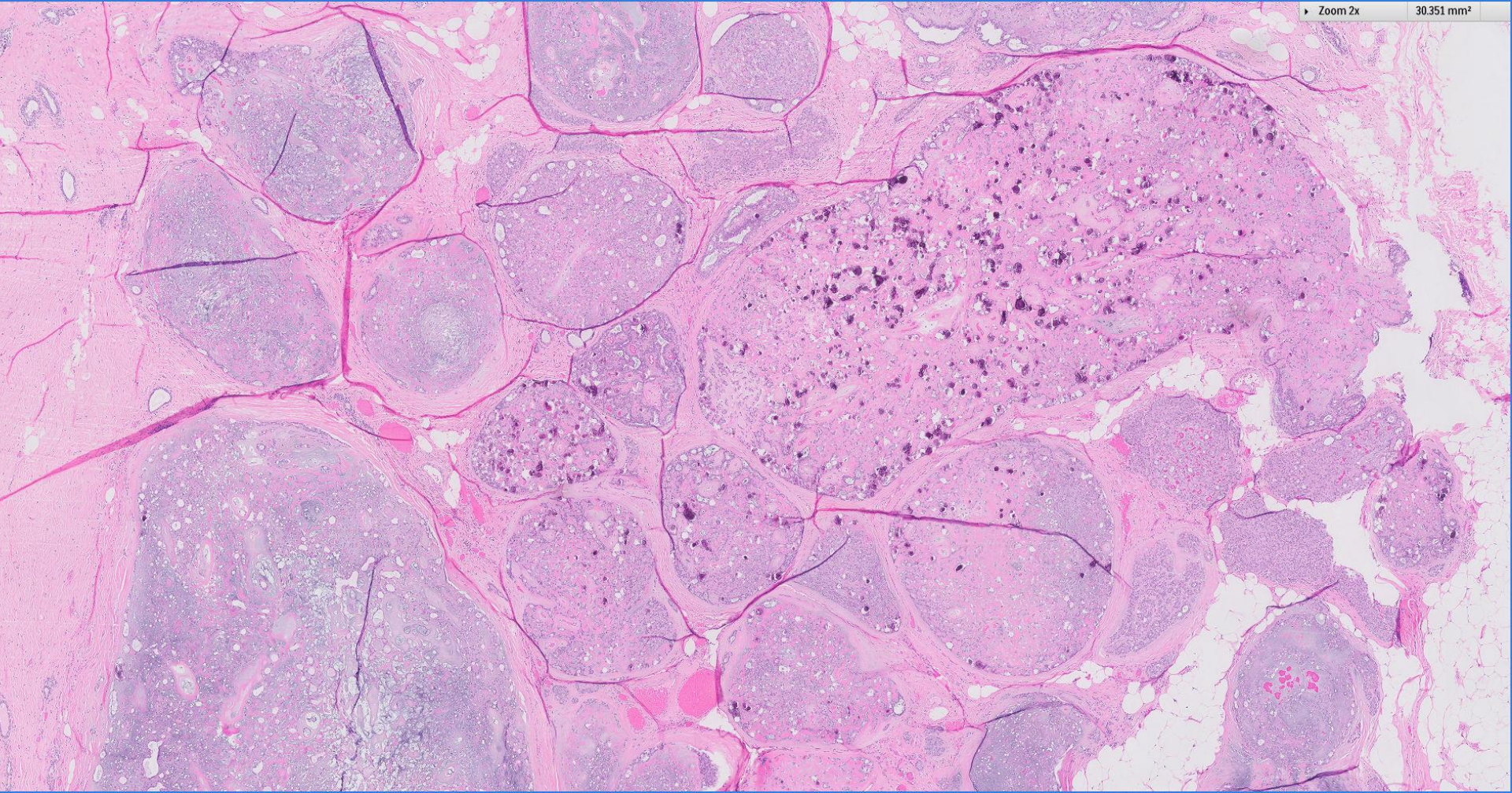






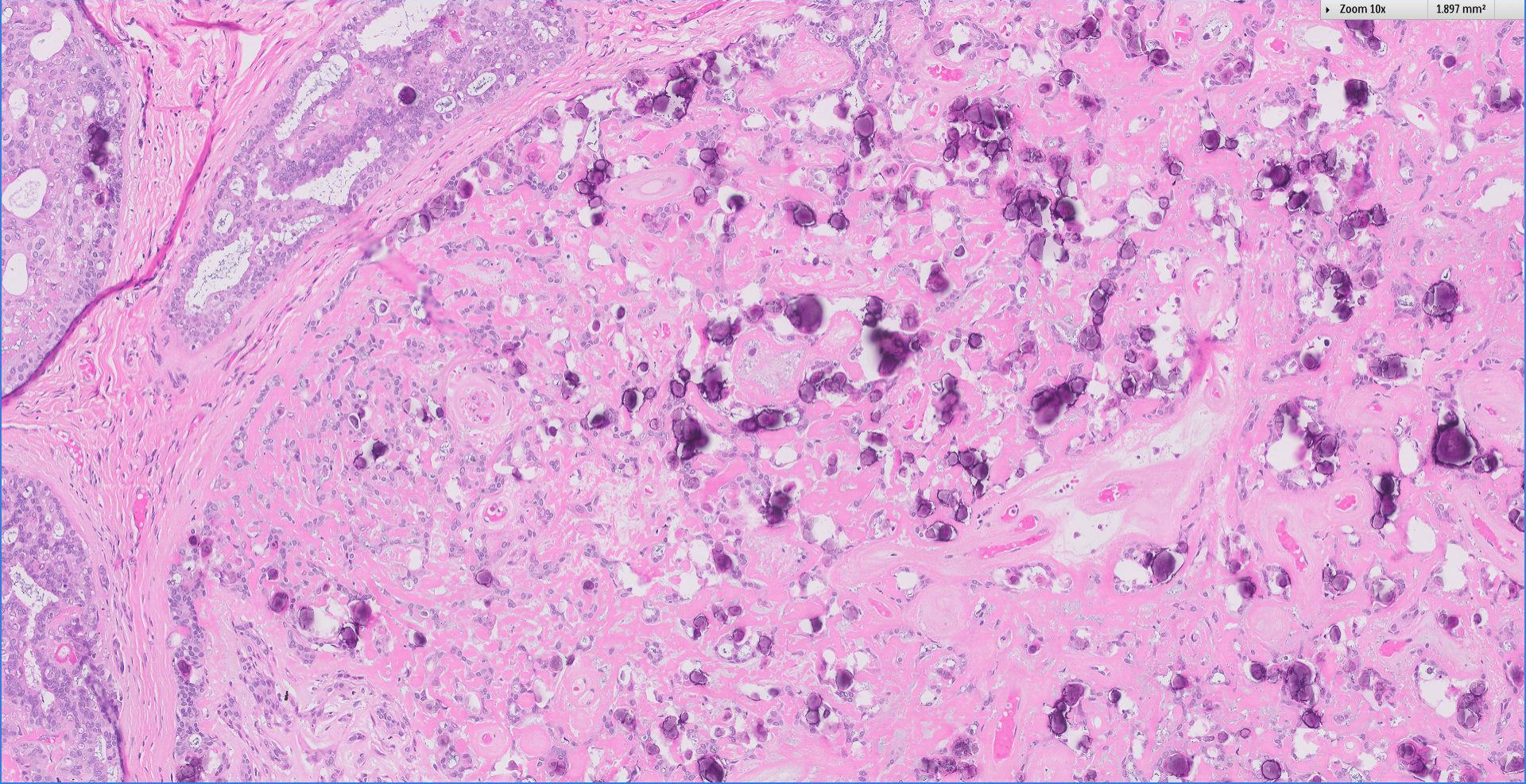
Zoom 2x

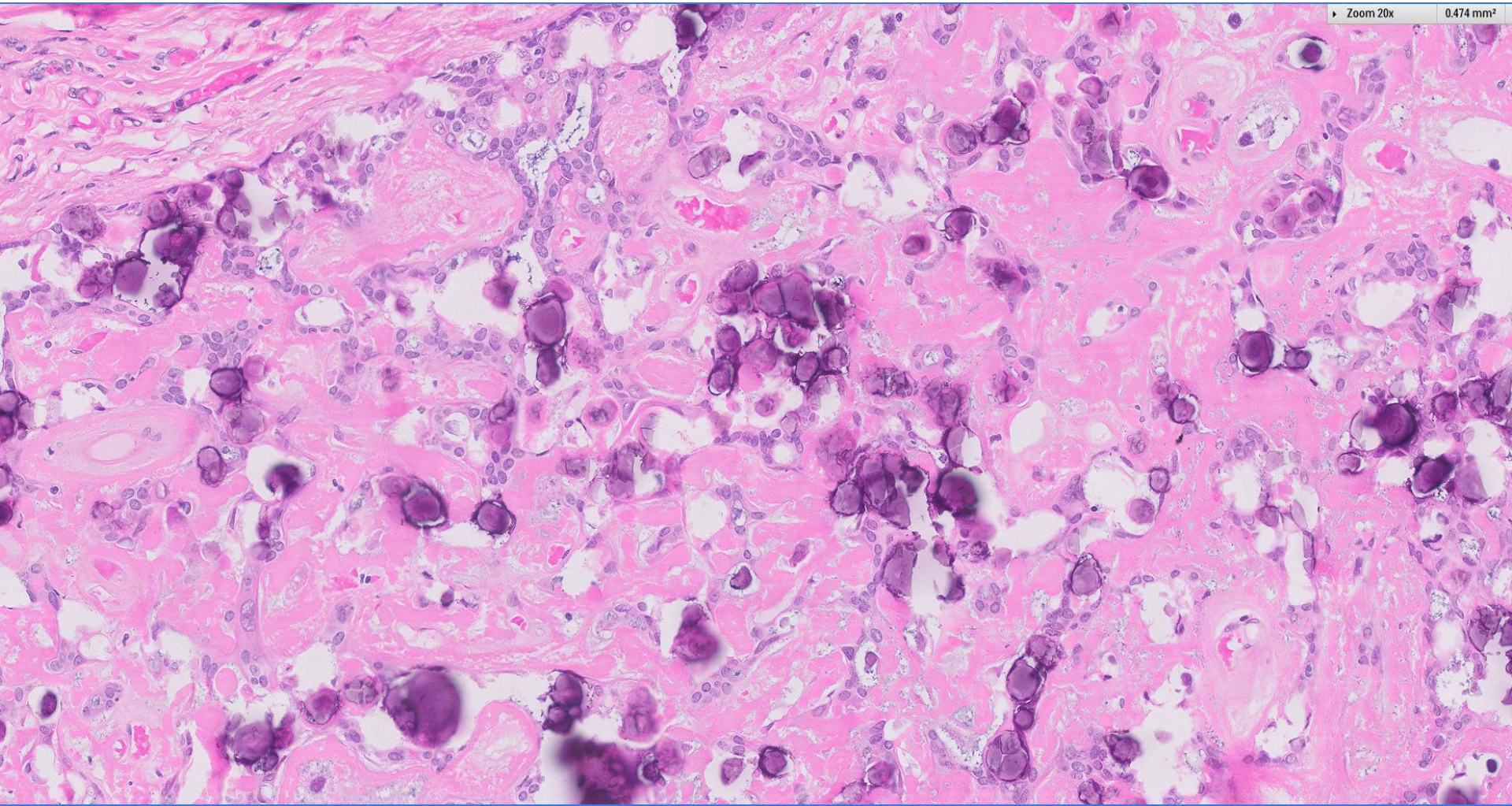
30.351 mm²

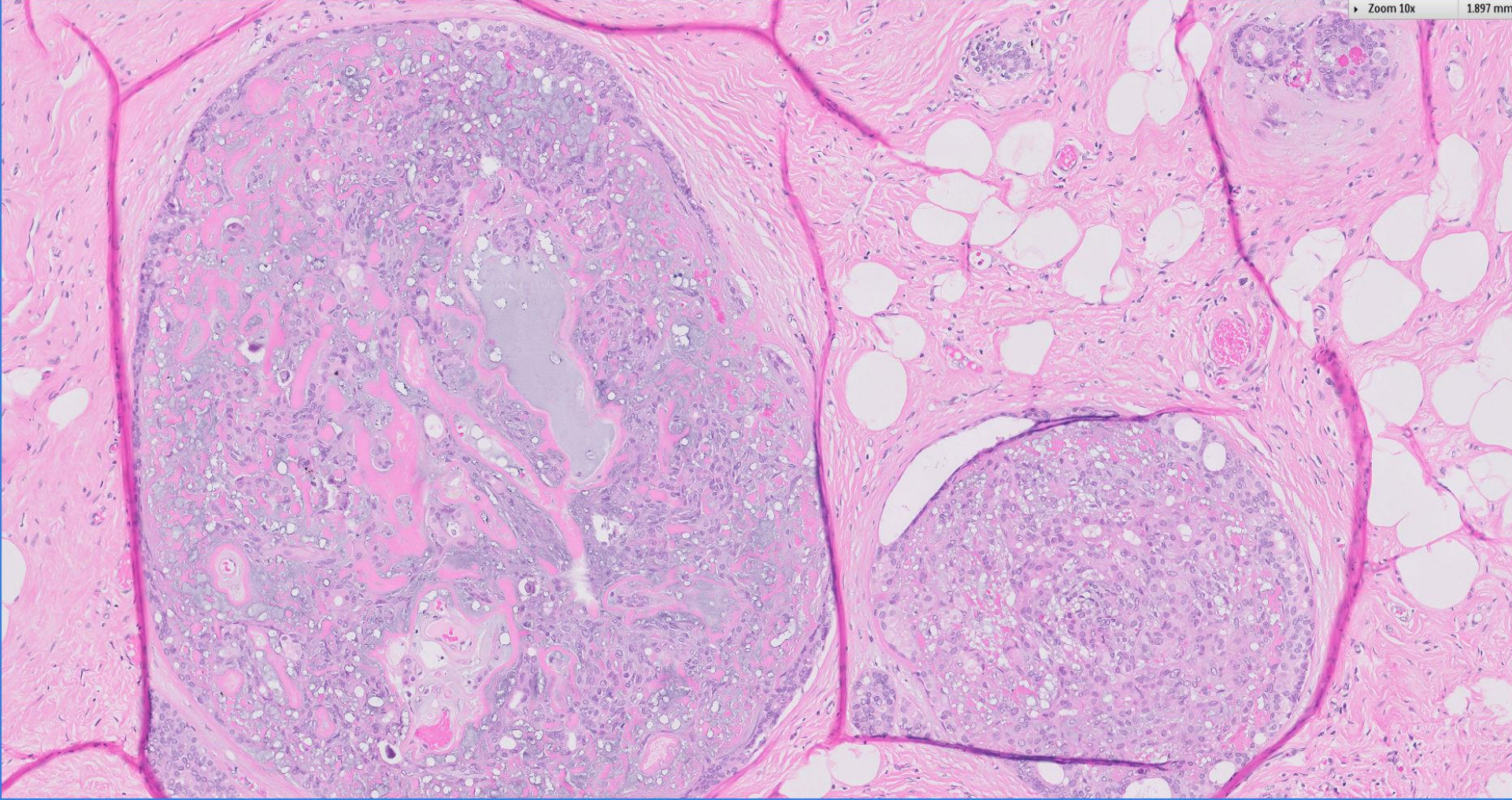


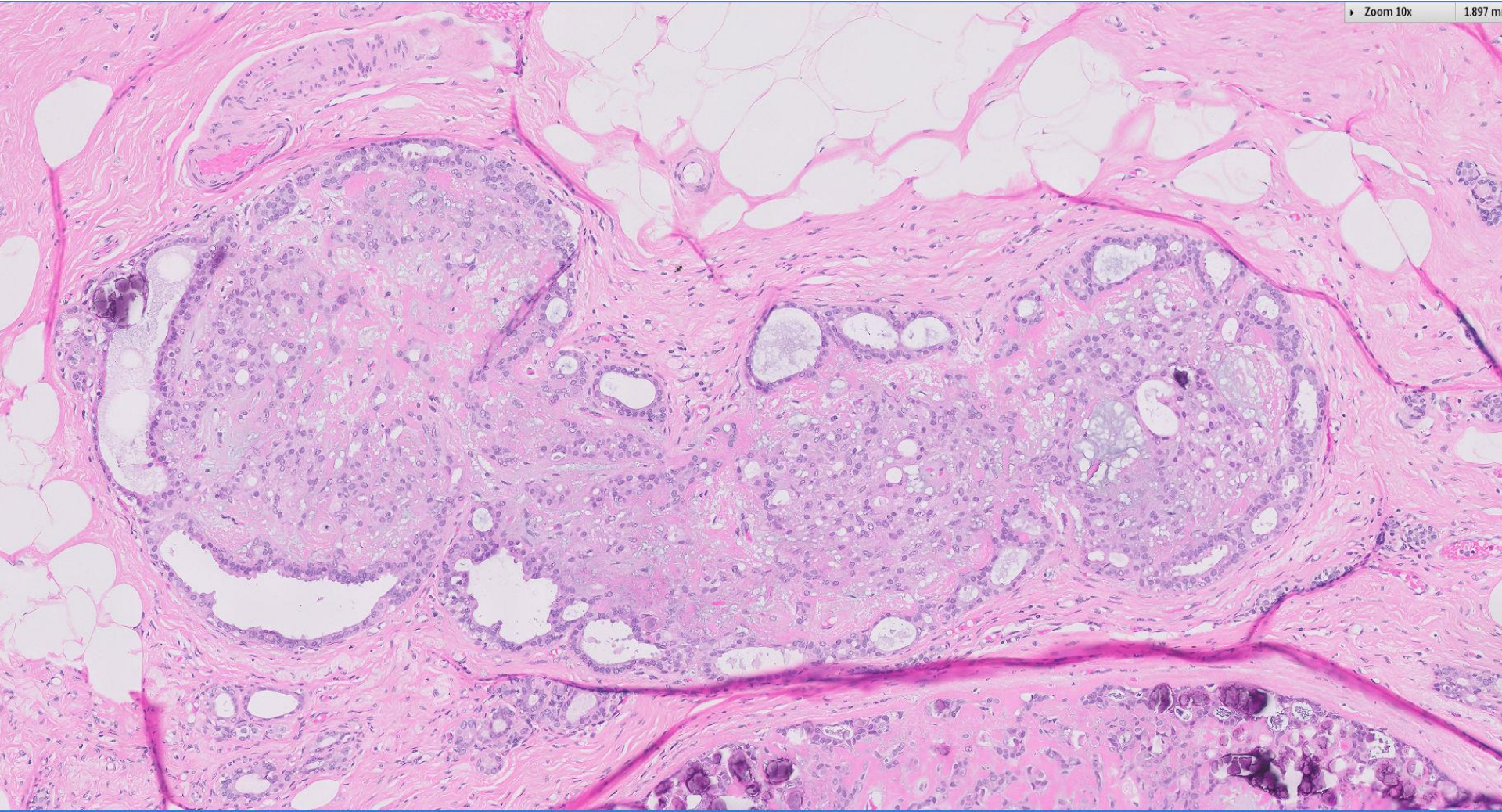
Zoom 10x

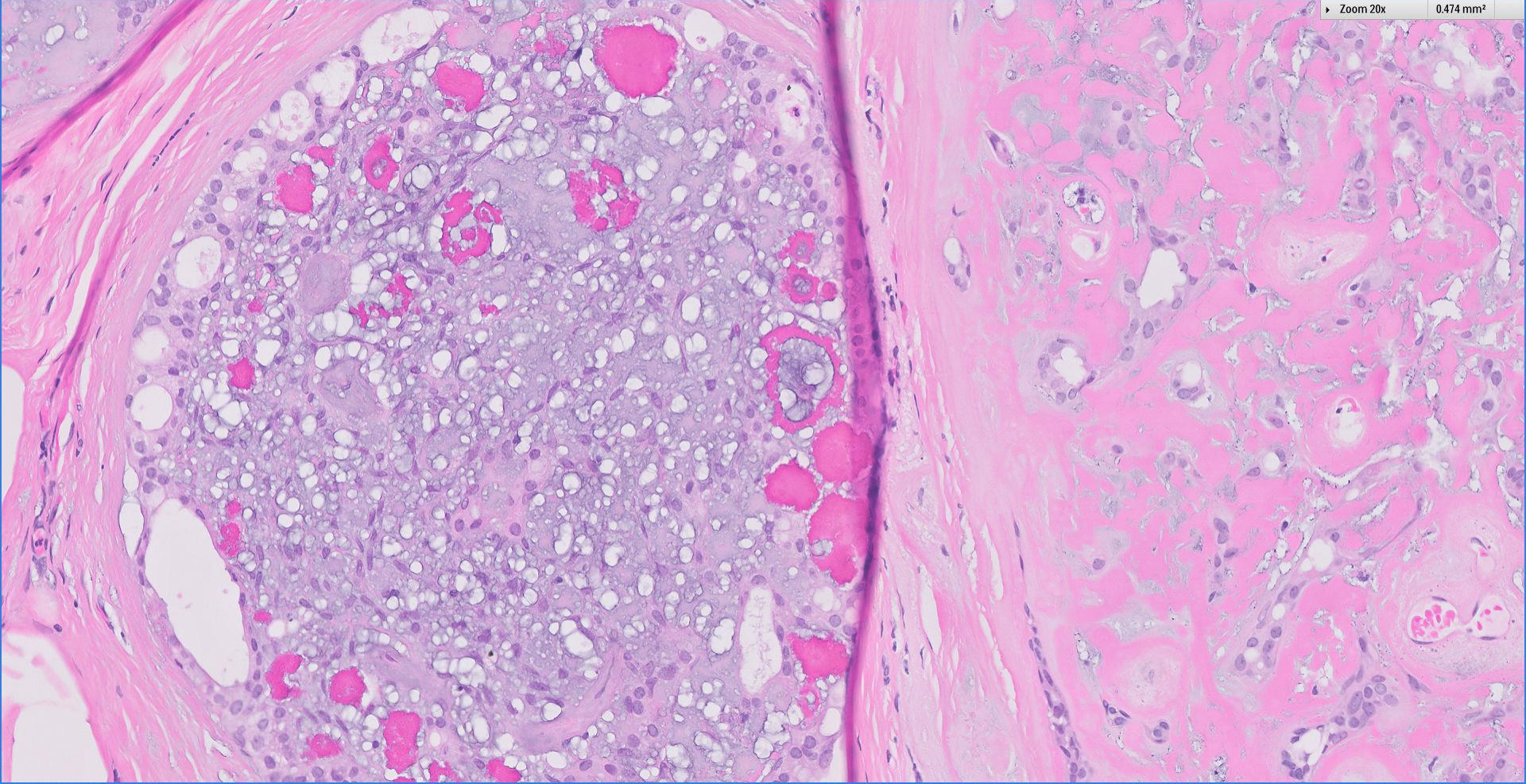
1.897 mm²





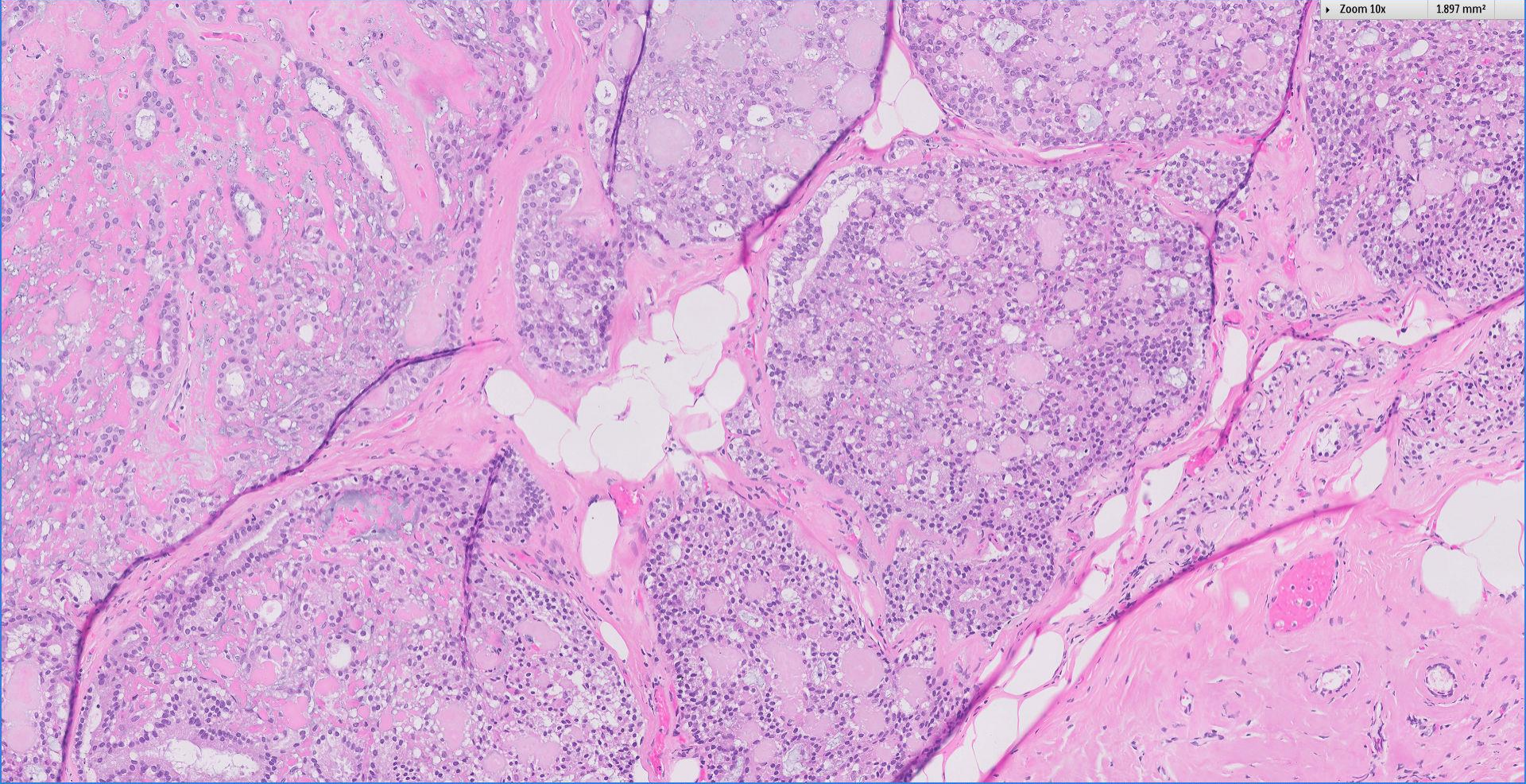






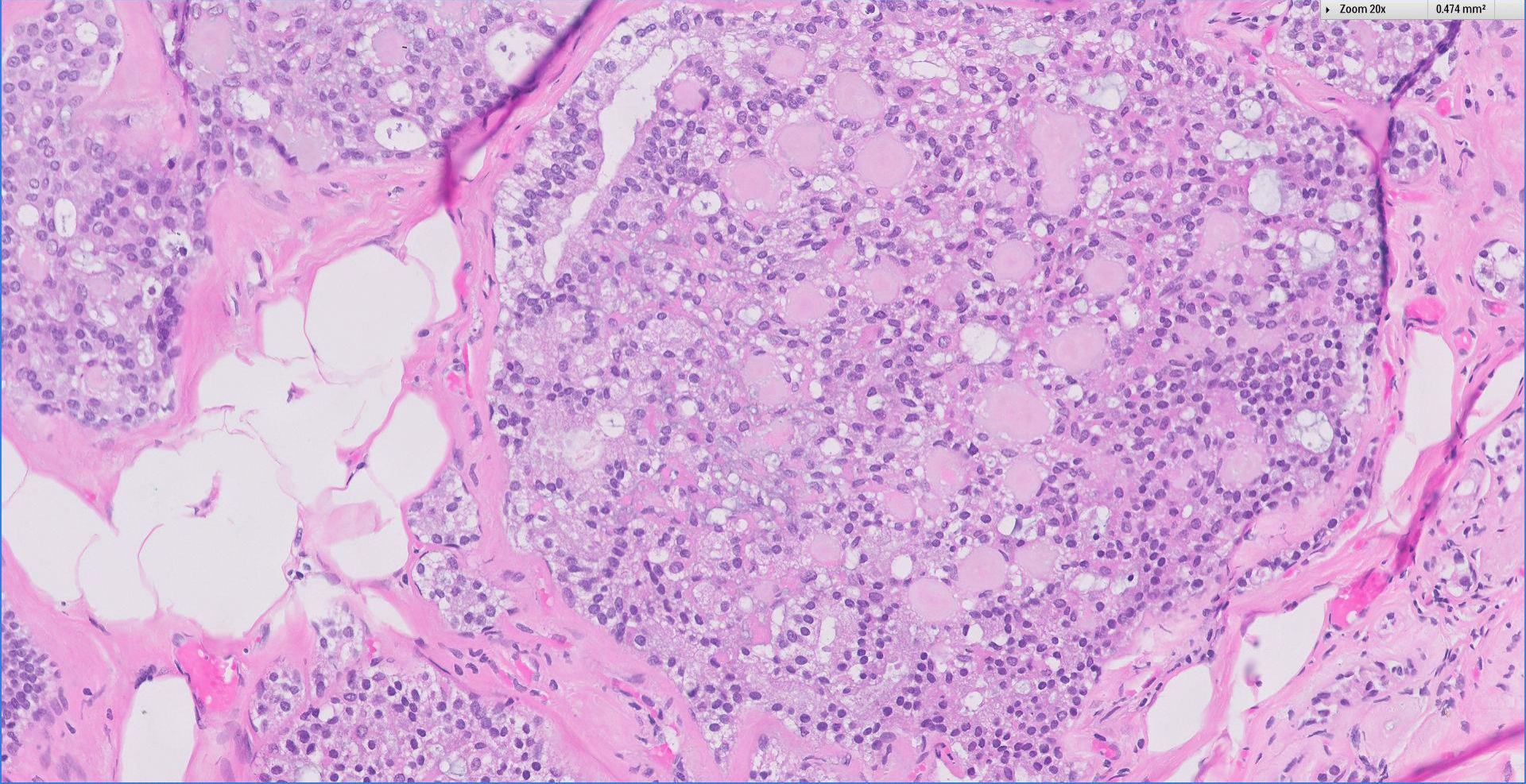
Zoom 10x

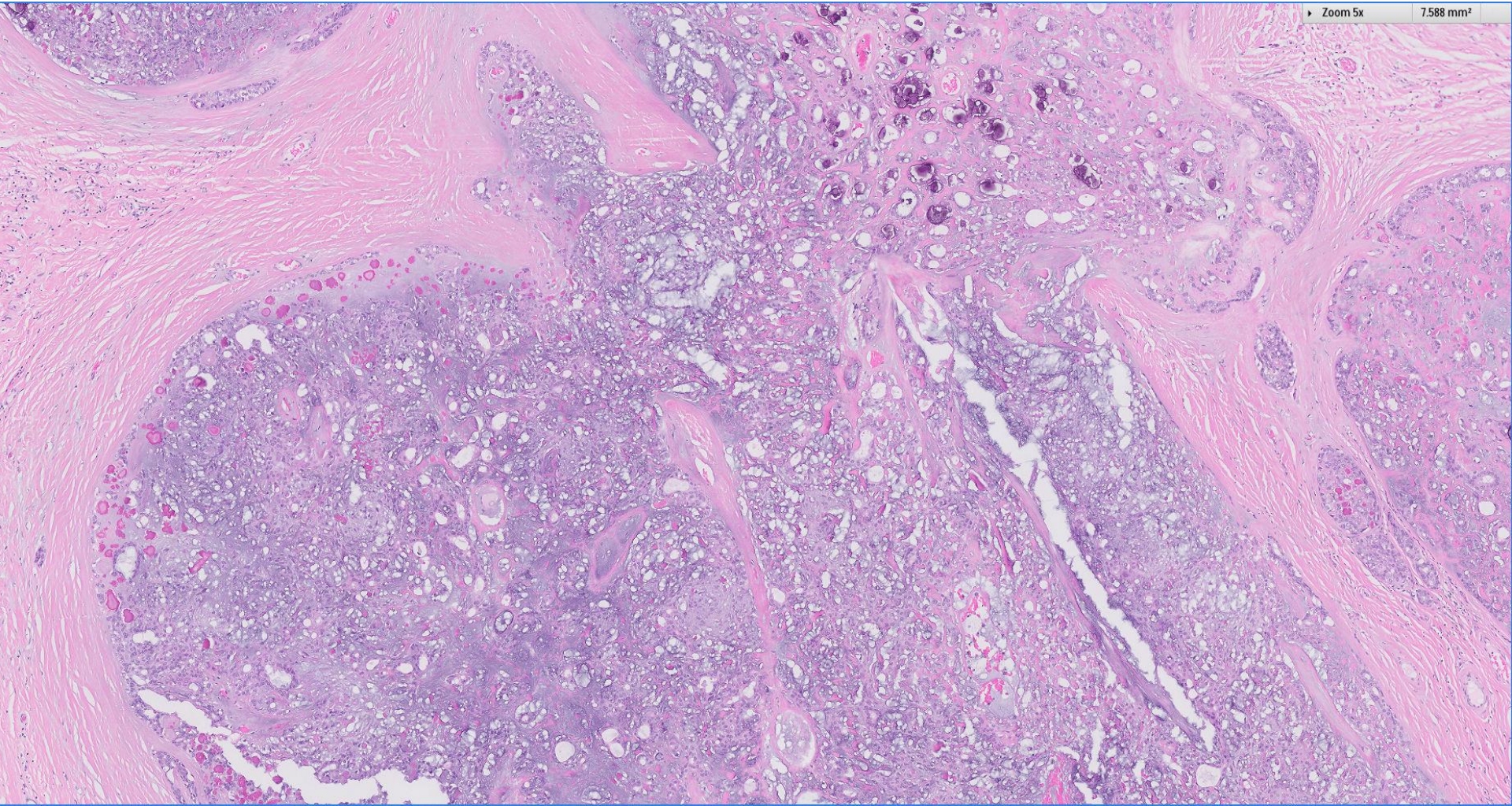
1.897 mm²



Zoom 20x

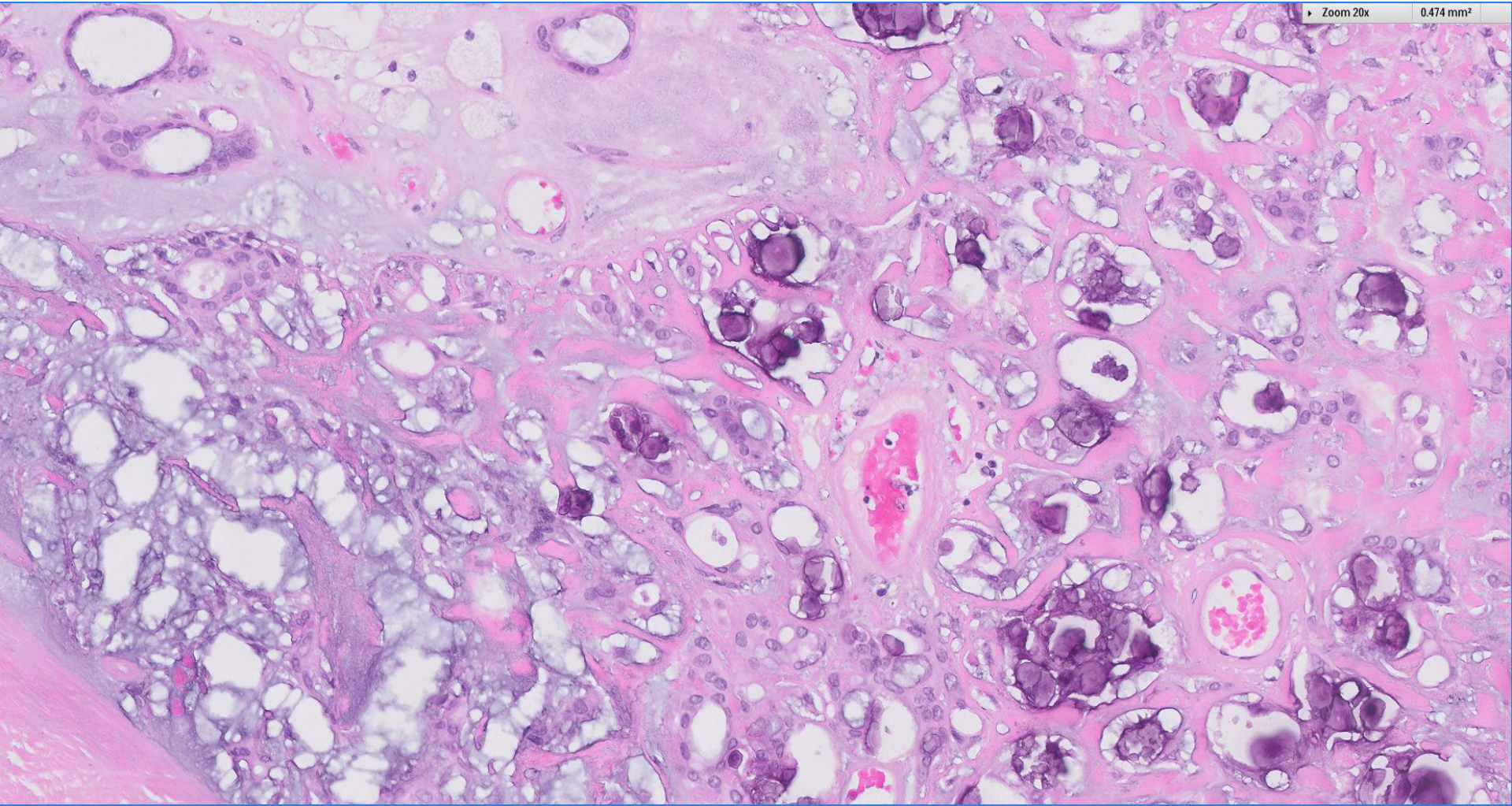
0.474 mm²



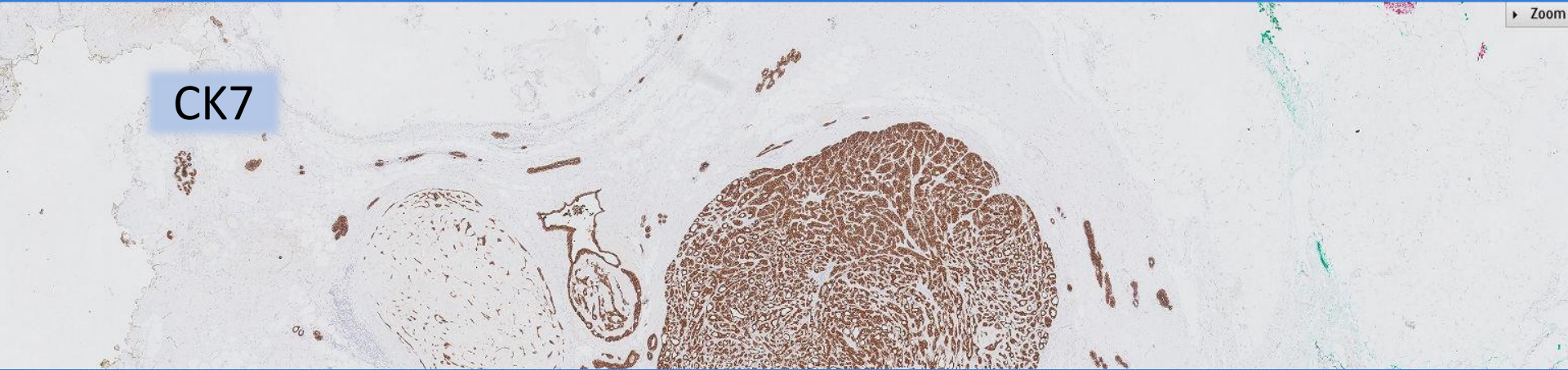


Zoom 20x

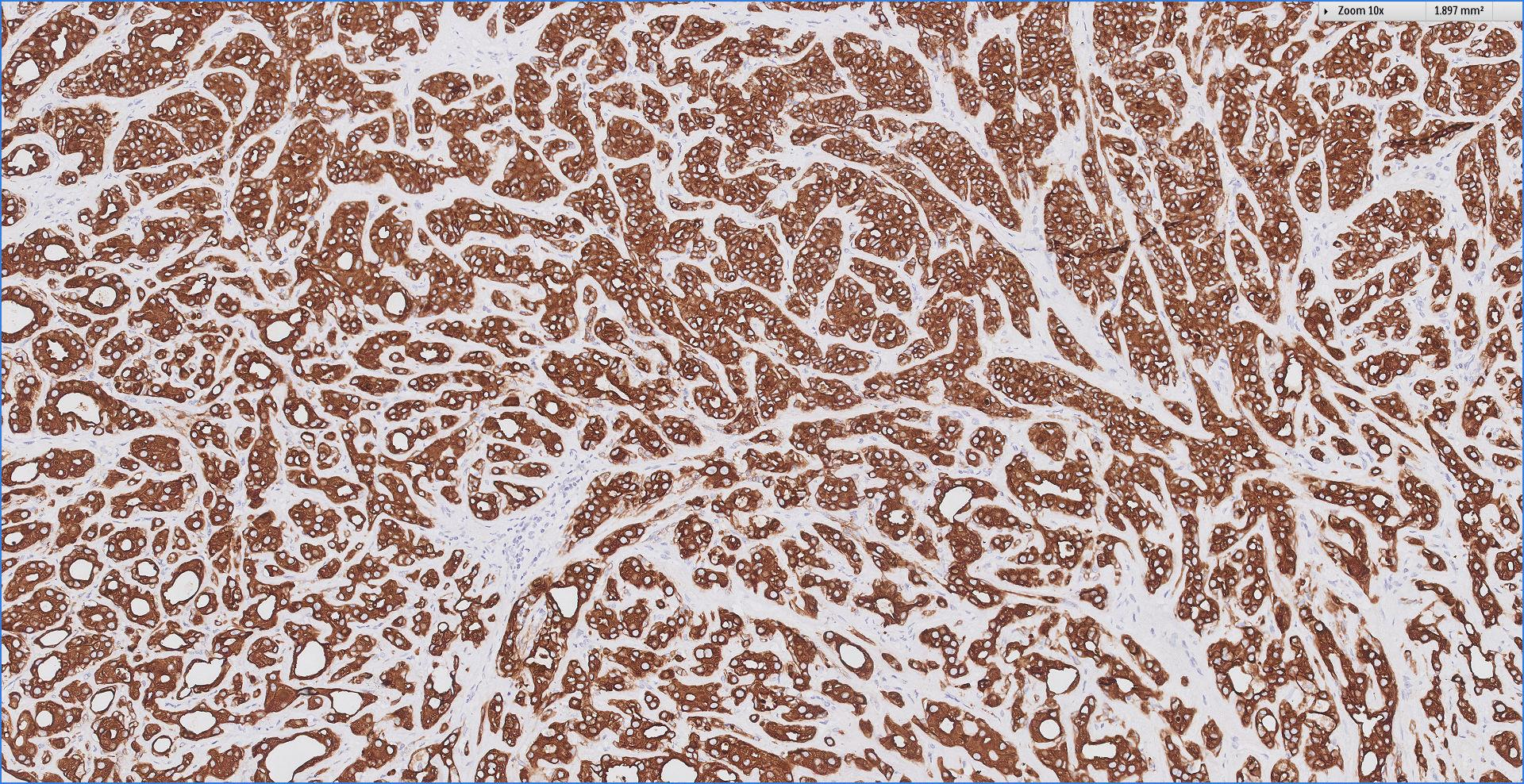
0.474 mm²



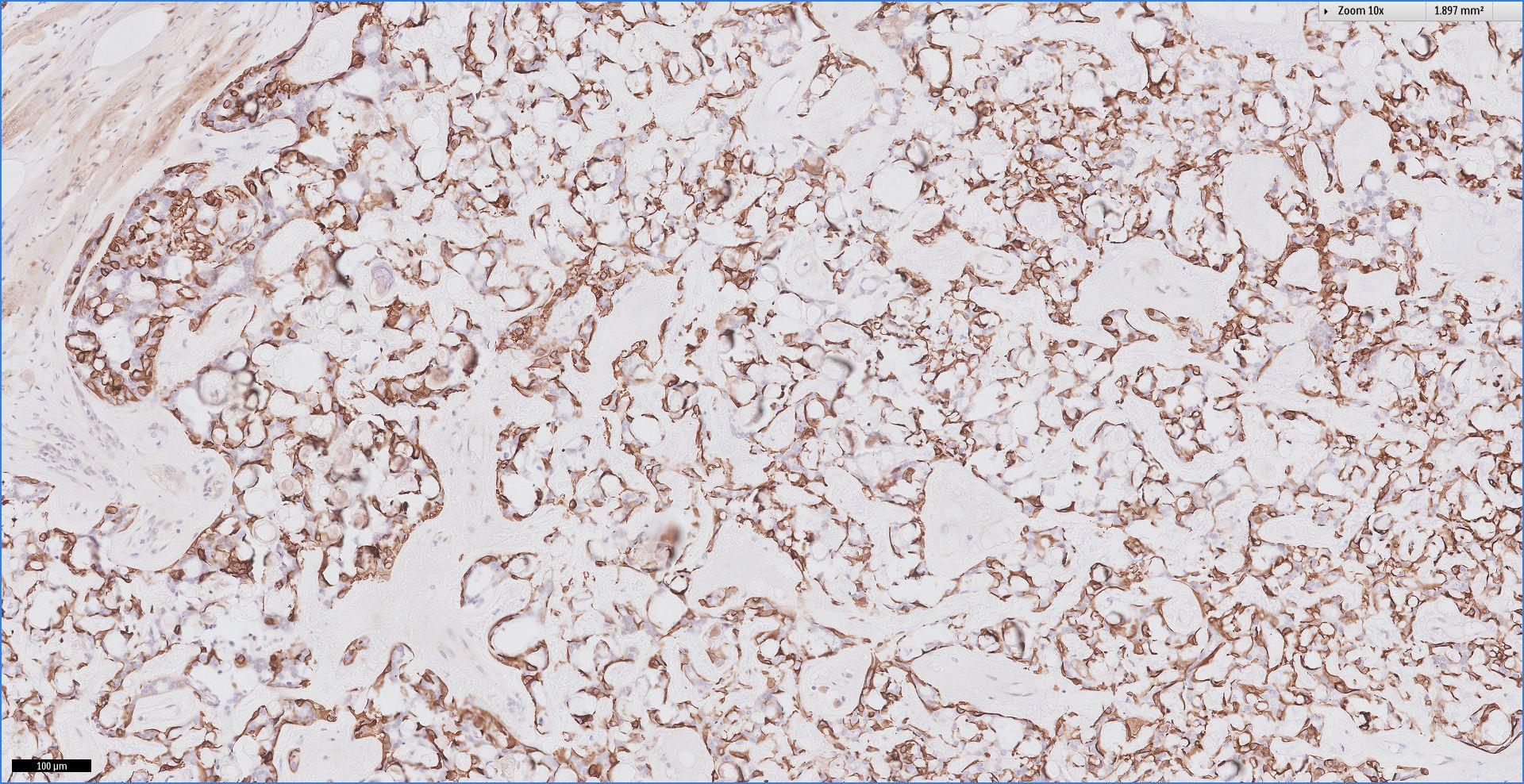
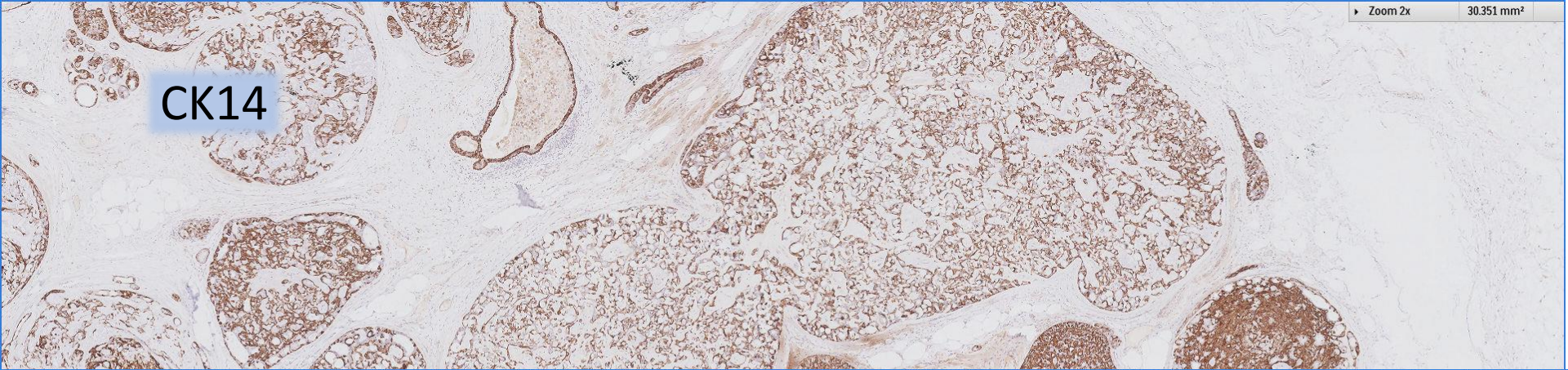
CK7



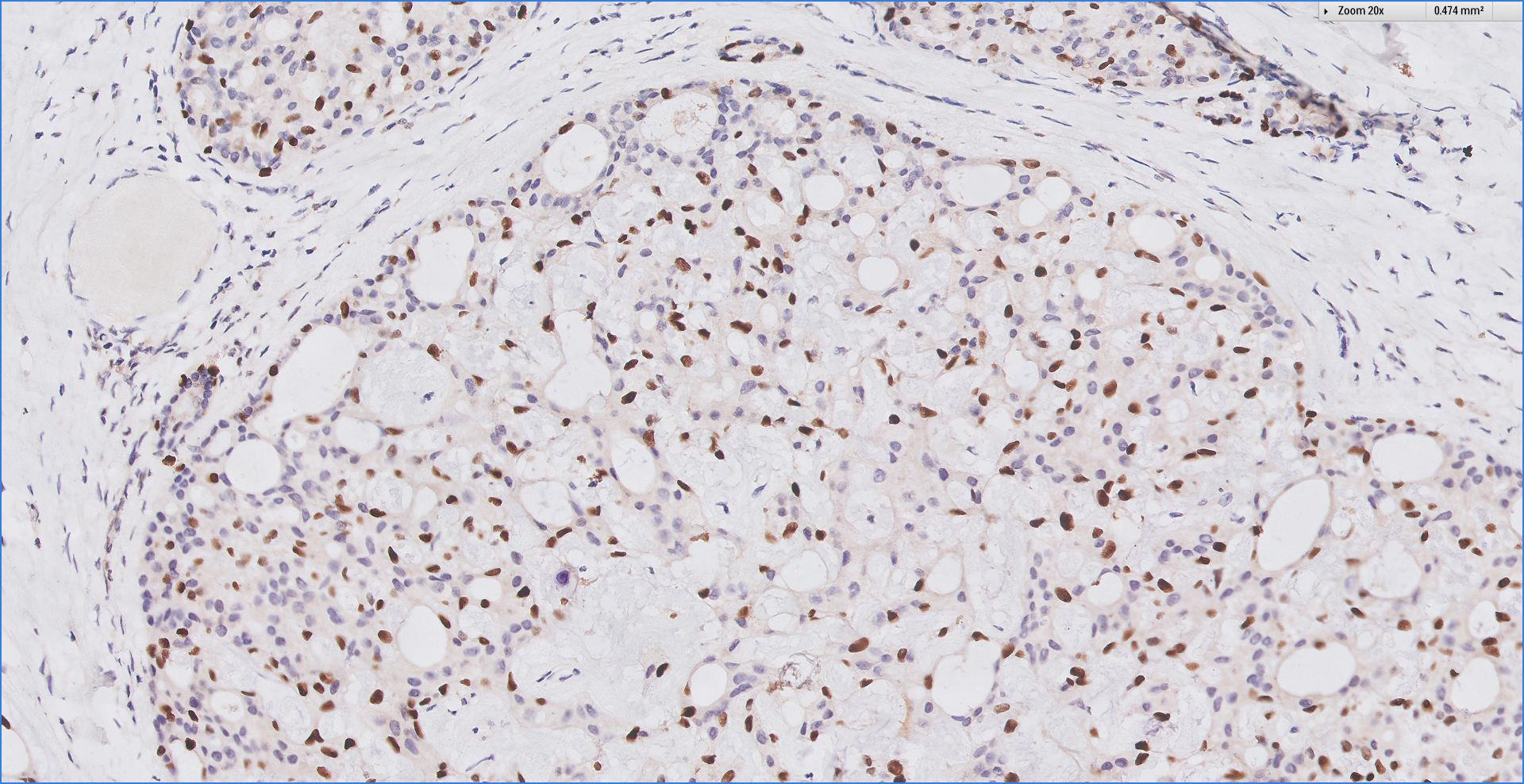
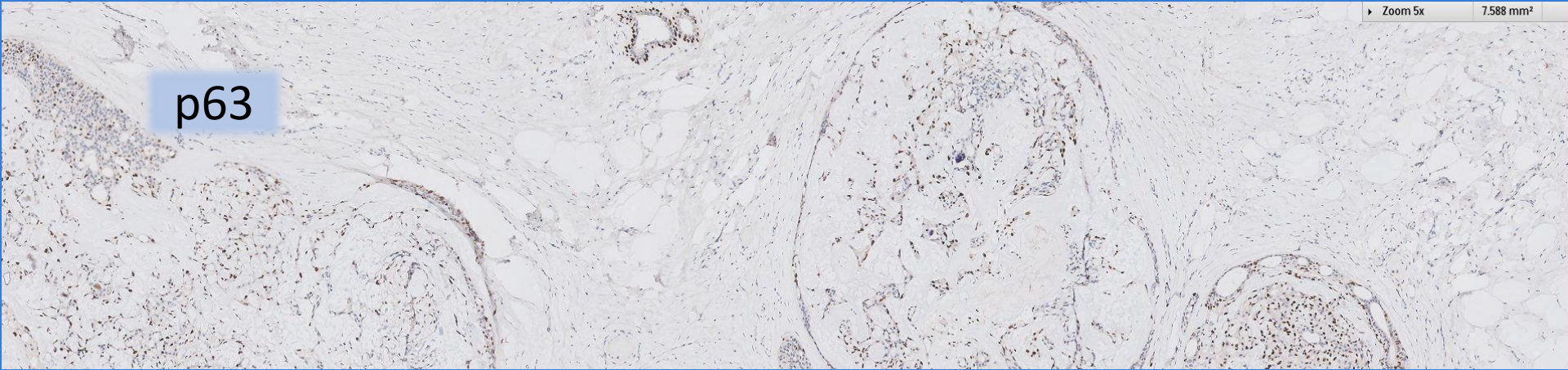
Zoom 10x 1.897 mm²



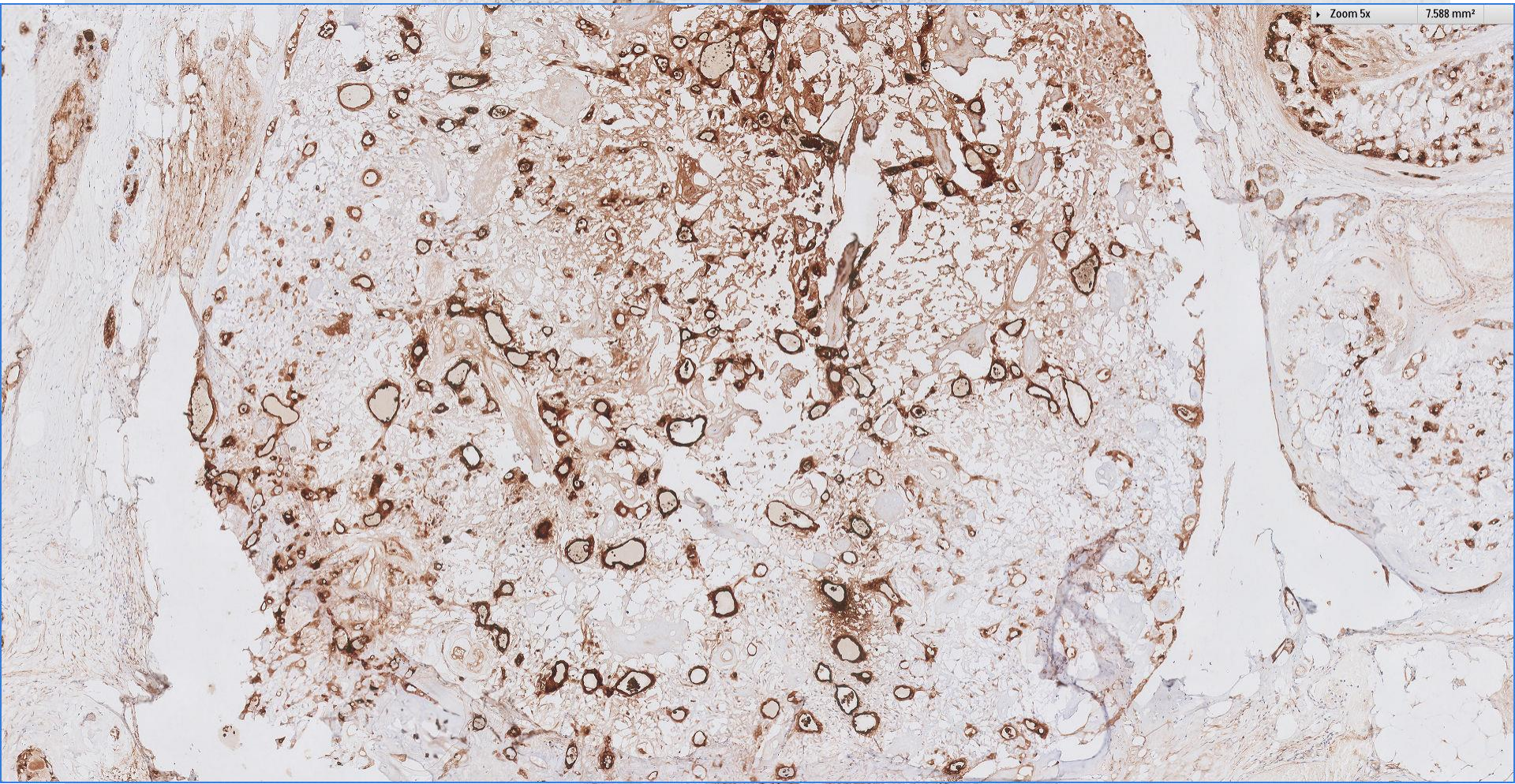
CK14



p63

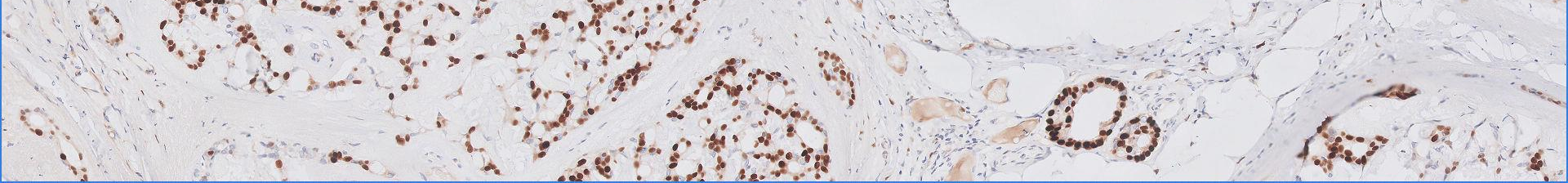
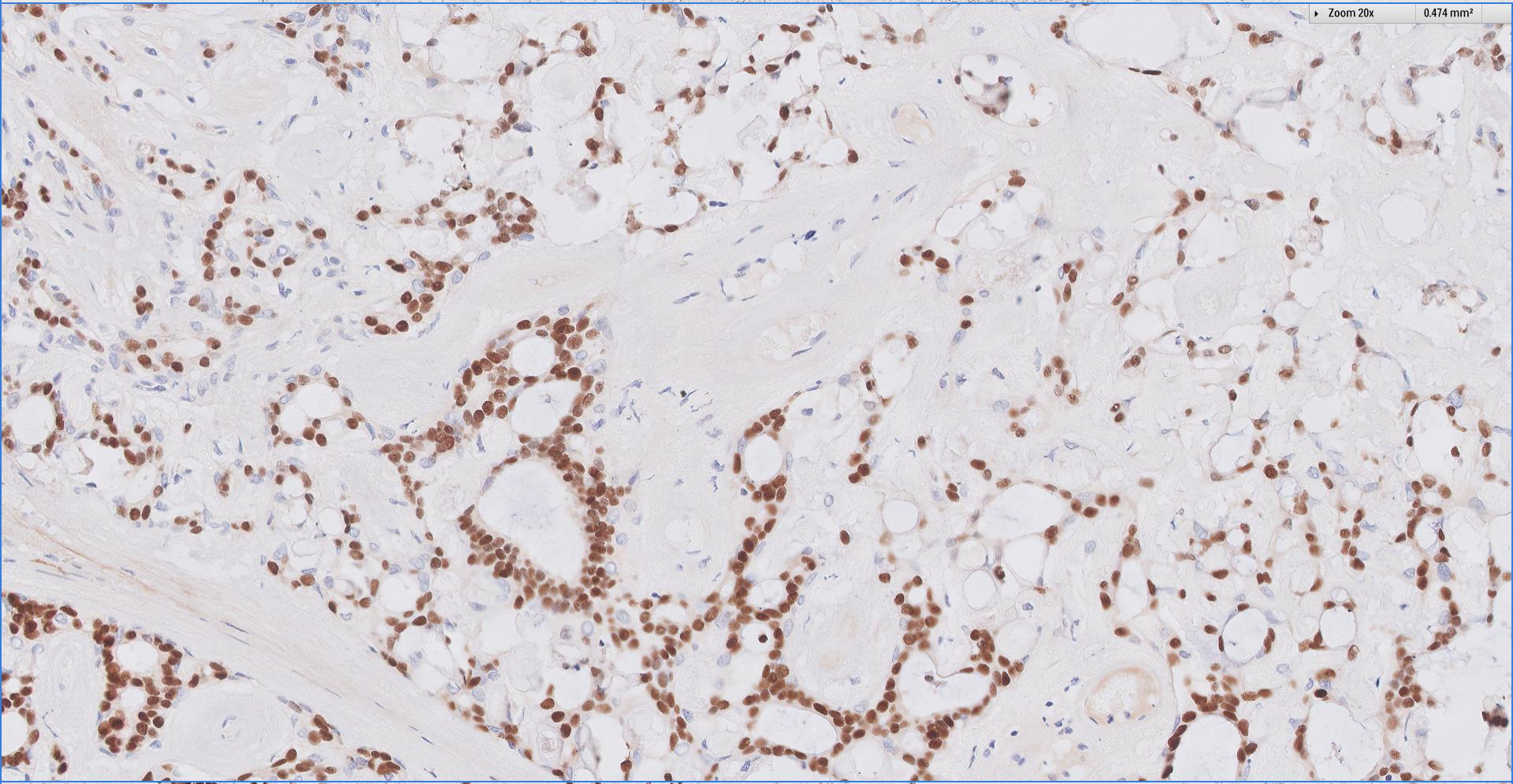


EMA



Zoom 5x 7.588 mm²

ER



Diagnosis

Left breast hookwire localization excision biopsy ~

Epithelial-myoepithelial neoplasm, consistent
with pleomorphic adenoma, 30mm.



Singapore
General Hospital

SingHealth

Division of Pathology



SingHealth DukeNUS
ACADEMIC MEDICAL CENTRE

PATHOLOGY

IAP

International Academy of Pathology
Singapore Division

Pleomorphic adenoma

- Morphologically similar to pleomorphic adenoma of the salivary glands.
- Rare lesion occurs in women over a wide age range, occasionally in men.
- Periareolar region is usually affected.
- Grossly consists of a firm nodule with some reported multinodular cases.
- Histologically composed of glands, nests and single epithelial and myoepithelial cells immersed in myxochondroid stroma.
- Immunohistochemistry shows CK14 in all cells, CK7 in luminal cells and p63 is observed at the edge of nests. Actin is sometimes expressed.

WHO 2012



Singapore
General Hospital

SingHealth
Division of Pathology



SingHealth DukeNUS
ACADEMIC MEDICAL CENTRE

PATHOLOGY



IAP

International Academy of Pathology
Singapore Division

Pleomorphic adenoma

- **Differential diagnoses ~**

Adenomyoepithelioma.

Papilloma with cartilaginous metaplasia.

Matrix-producing carcinoma.

Squamous cell carcinoma with myxoid stroma.

WHO 2012



Singapore
General Hospital

SingHealth

Division of Pathology



SingHealth **DukeNUS**
ACADEMIC MEDICAL CENTRE

PATHOLOGY



IAP

International Academy of Pathology
Singapore Division

 Breast
Pathology
Course 2017

